



US 20010008437A1

(19) **United States**(12) **Patent Application Publication**
Fujimori et al.(10) **Pub. No.: US 2001/0008437 A1**(43) **Pub. Date: Jul. 19, 2001**(54) **LIQUID CRYSTAL DISPLAY DEVICE****Publication Classification**(76) Inventors: **Koichi Fujimori**, Mie (JP); **Masumi Kubo**, Nara (JP); **Yozo Narutaki**, Nara (JP)(51) **Int. Cl.⁷** **G02F 1/1335**; G02F 1/1333(52) **U.S. Cl.** **349/113**; 349/112; 349/158

Correspondence Address:

NIXON & VANDERHYTE P.C.
1100 North Glebe Rd., 8th Floor
Arlington, VA 22201-4714 (US)(57) **ABSTRACT**

Each pixel region includes a transmission region for display in a transmission mode using light entering through a first substrate and a reflection region for display in a reflection mode using light entering through a second substrate. The first substrate includes a transparent electrode region and a reflection electrode region, both of which have flat surfaces facing a liquid crystal layer. The second substrate includes a transparent electrode in the reflection region and the transmission region on its surface facing the liquid crystal layer and includes a light diffusion layer in the reflection region, and the surface facing the liquid crystal layer is flat in the transmission region and the reflection region.

(21) Appl. No.: **09/759,334**(22) Filed: **Jan. 16, 2001**(30) **Foreign Application Priority Data**

Jan. 18, 2000 (JP) 2000-008769

Nov. 29, 2000 (JP) 2000-362208

A detailed cross-sectional diagram of a semiconductor device 100. The device consists of several stacked layers: a top layer 9, followed by a thin layer 10, a patterned layer 30, another thin layer 24, a thick substrate-like layer 19, a thin layer 7, and a bottom layer 11. Various functional regions are defined within these layers. A central region contains a stack of layers labeled 1, 21, and 23, with dimensions dt and dr indicated. To the left, there's a complex structure involving layers 12, 13, 14, 15, 16, 17, and 18. To the right, there are regions labeled 2, 20, 22, and 23. Other labels include 5, 6, 8, and 11. Dimensions P_x , R_f , and T_r are shown at the top, indicating periodic or repeating features. Brackets on the right side group some layers into sections 100B (layers 9-30) and 100A (layers 19-11).

FIG. 2

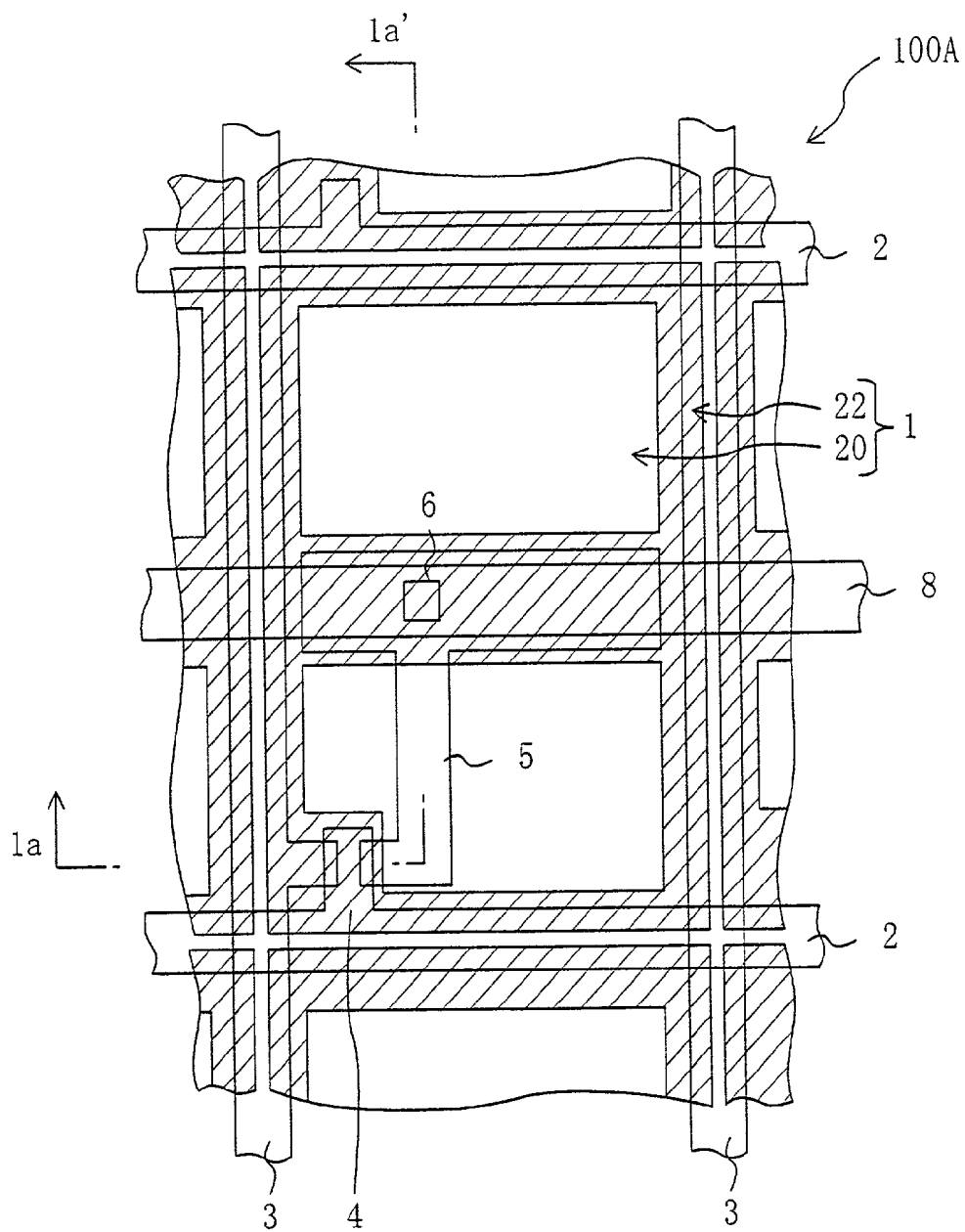


FIG. 3A

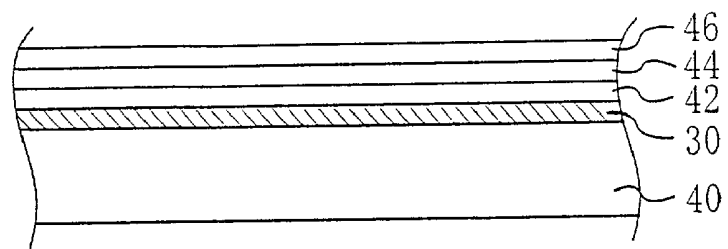


FIG. 3B

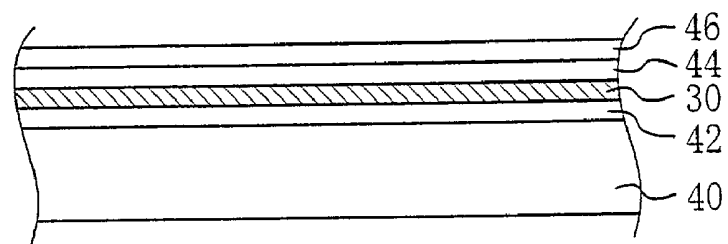


FIG. 3C

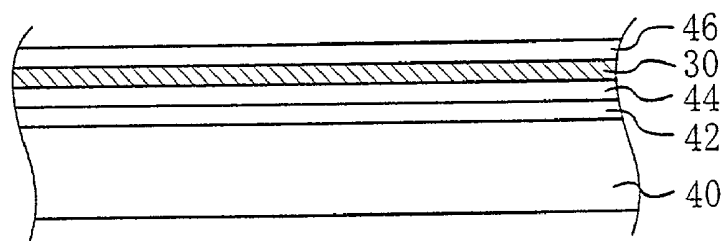


FIG. 4A

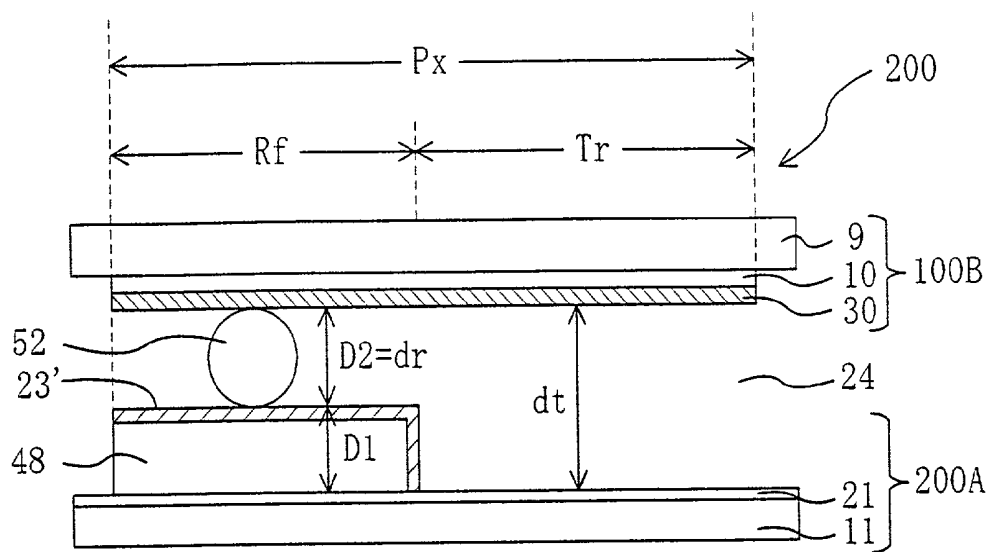


FIG. 4B

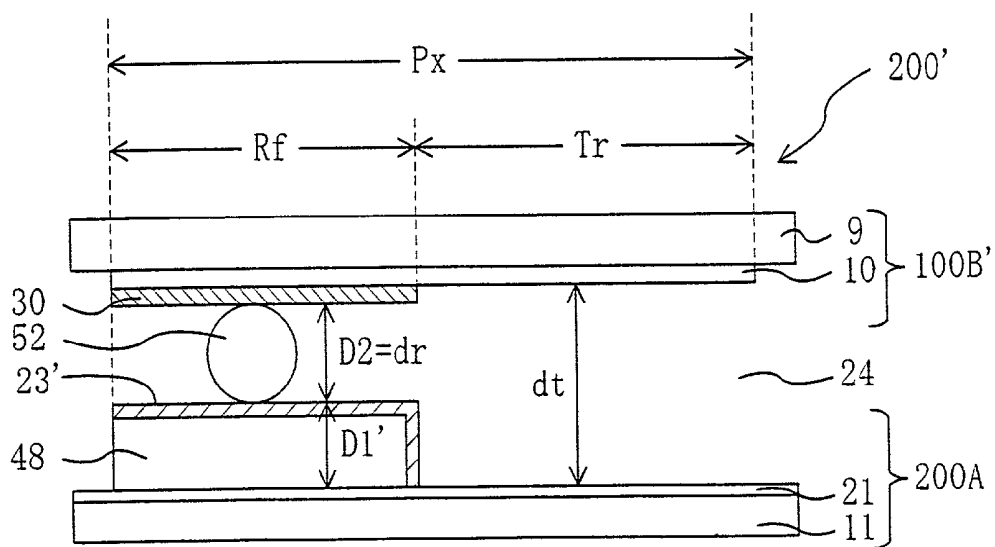


FIG. 5

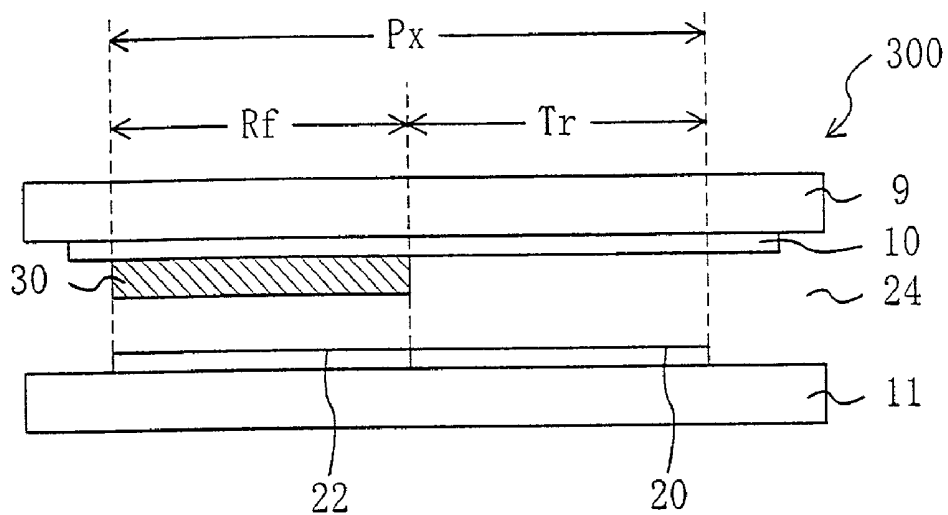


FIG. 6

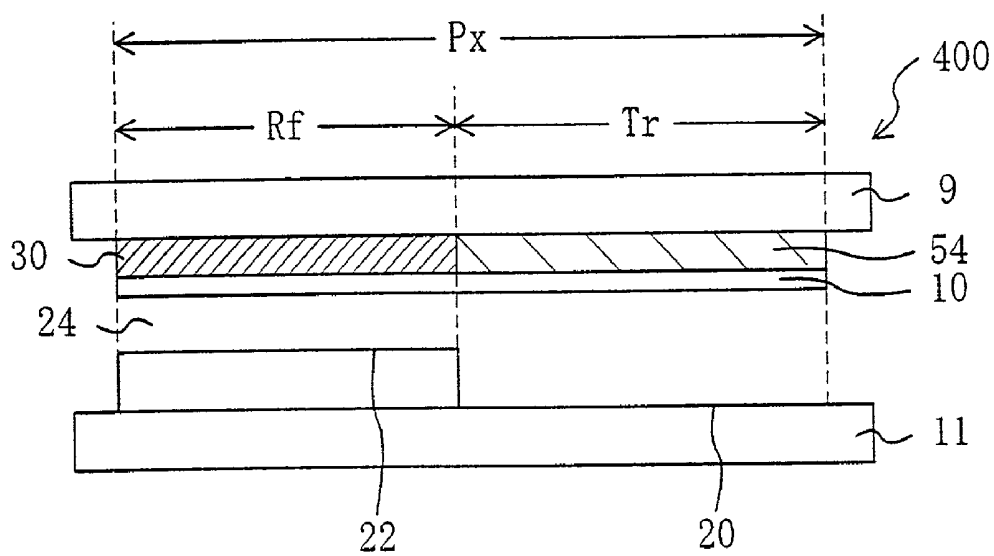


FIG. 7

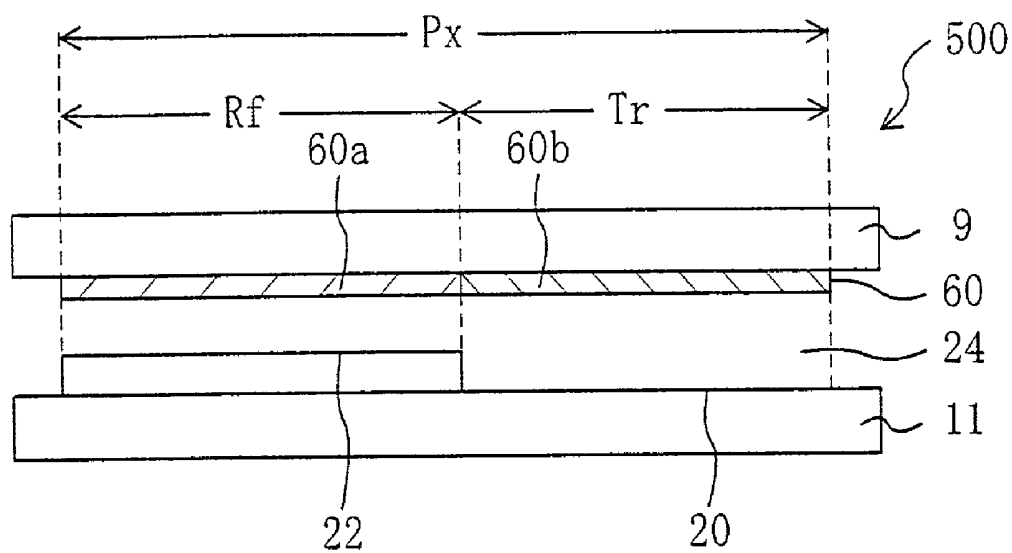


FIG. 8

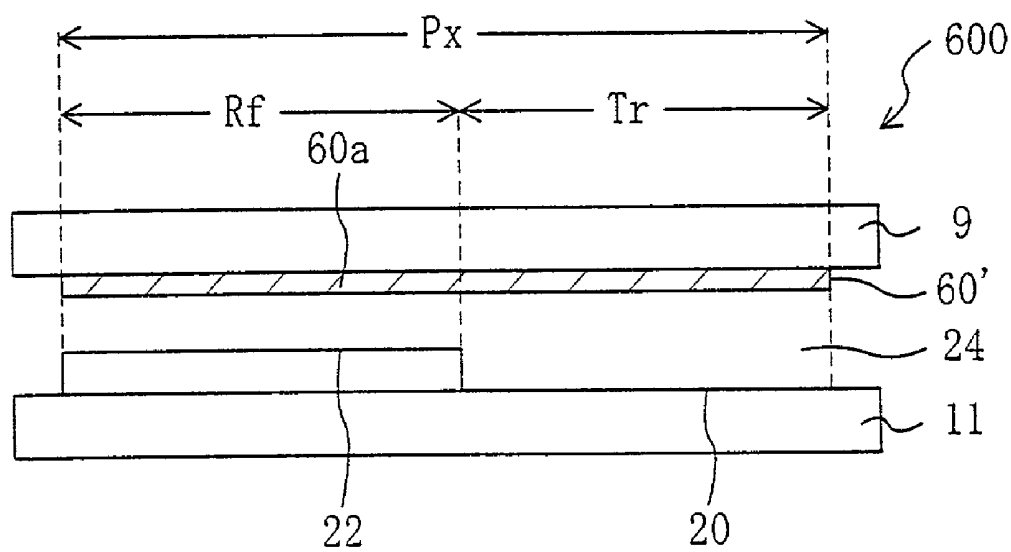


FIG. 9

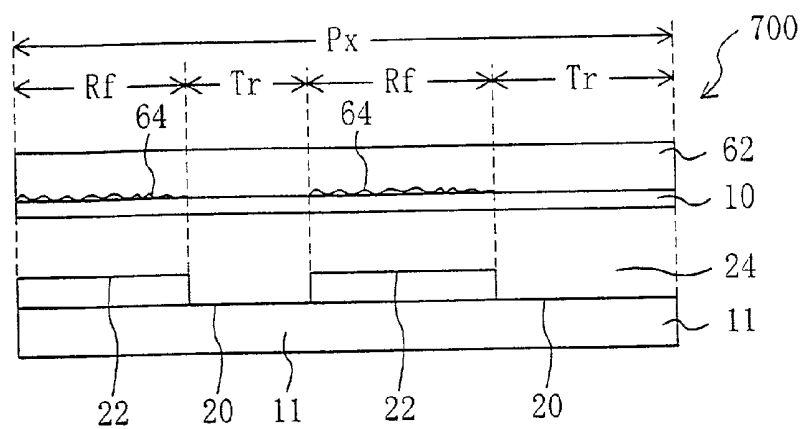


FIG. 10

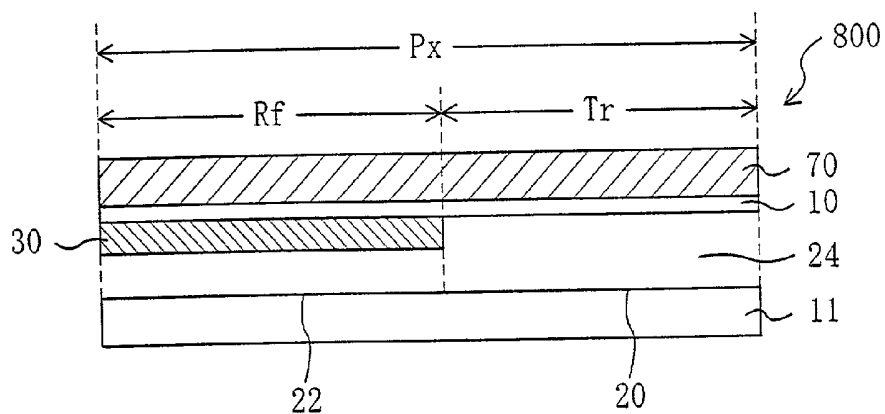


FIG. 11

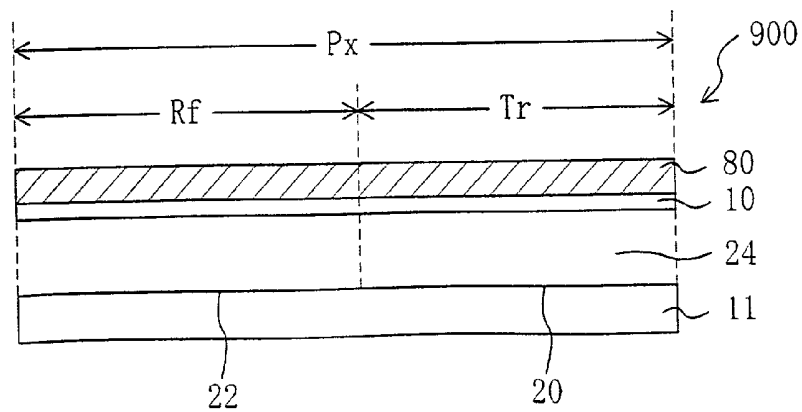


FIG. 12A

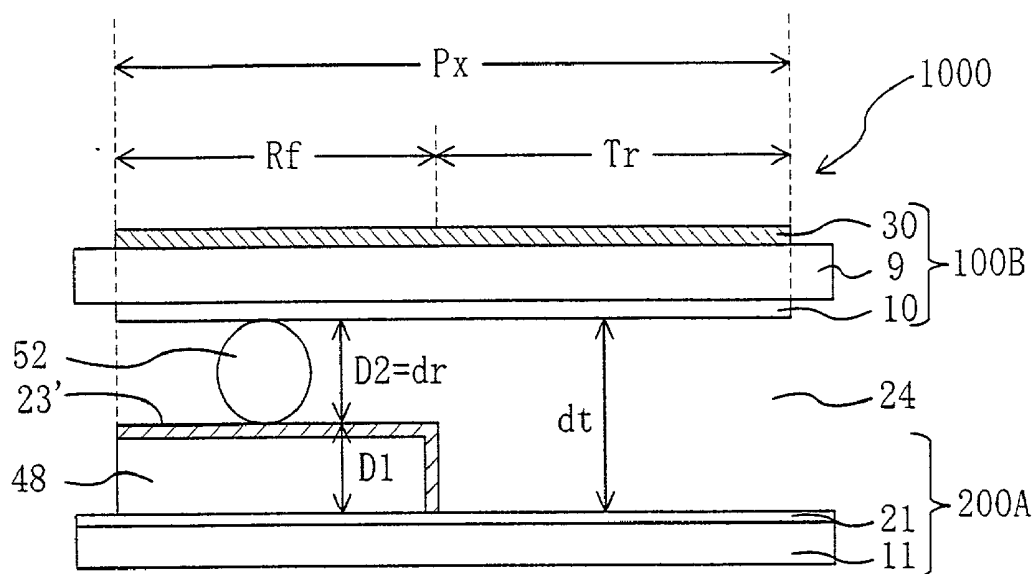


FIG. 12B

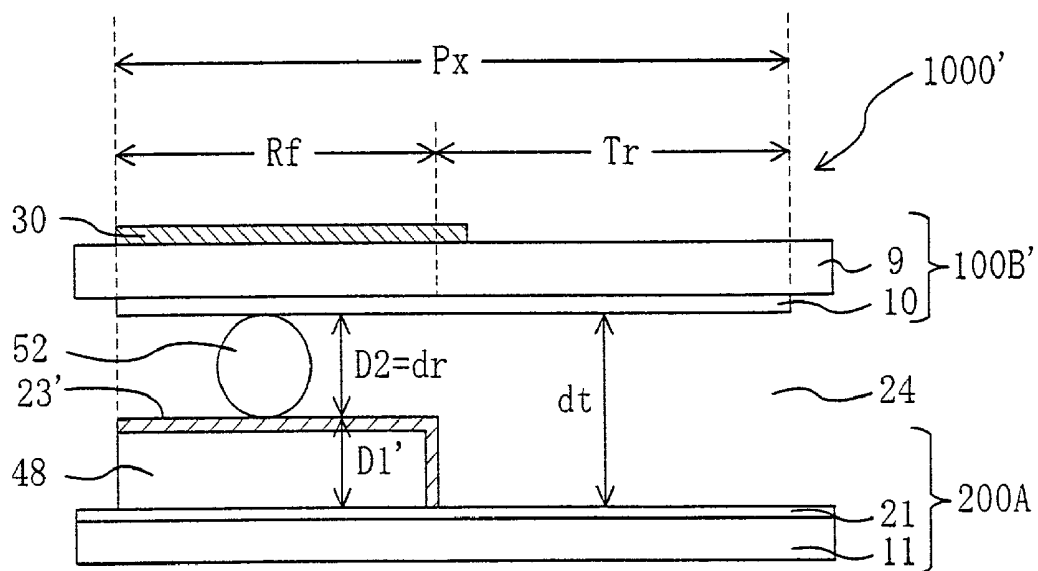


FIG. 13

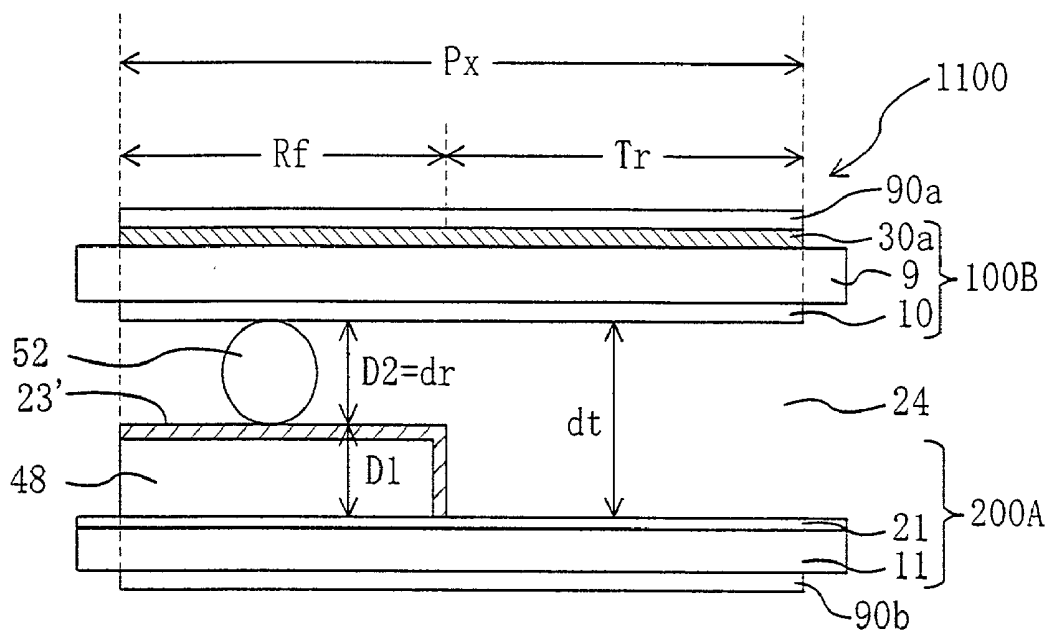


FIG. 14

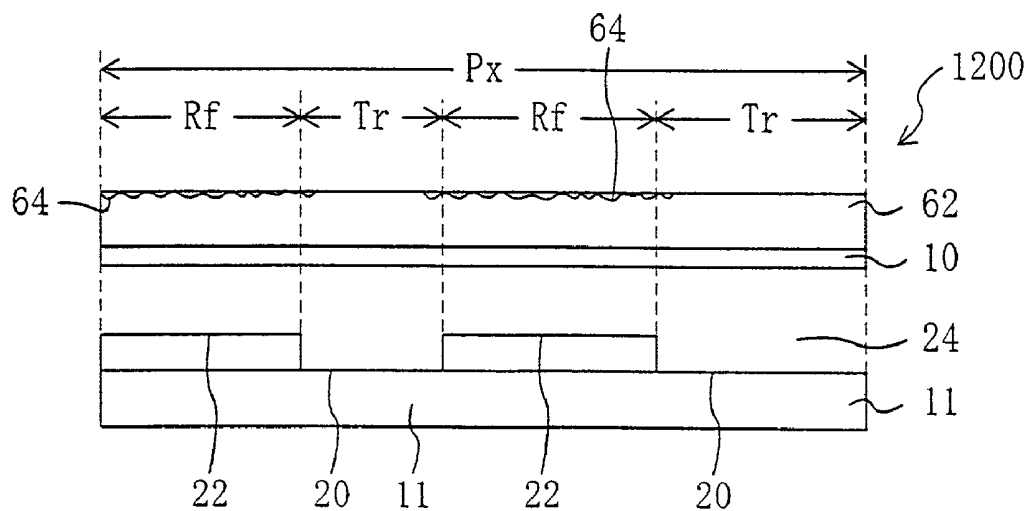


FIG. 15

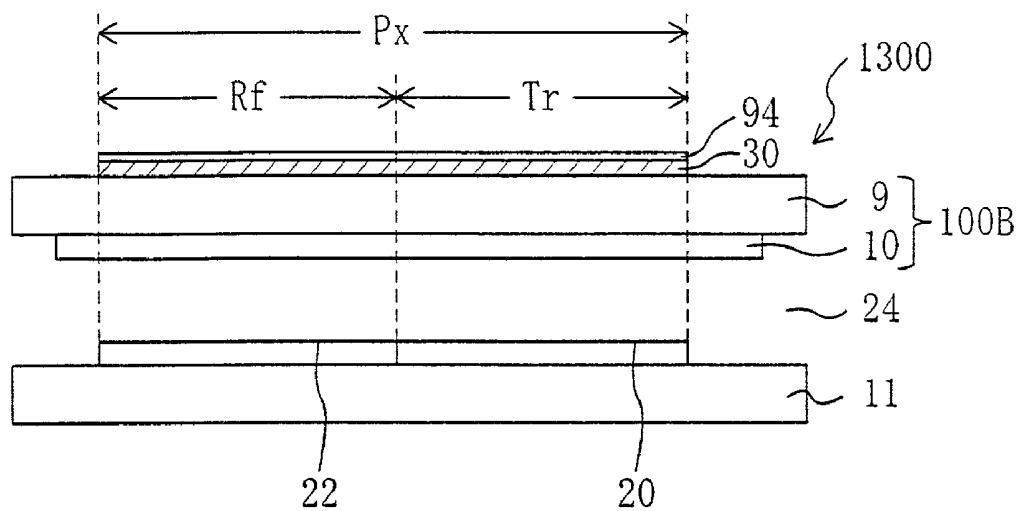


FIG. 16

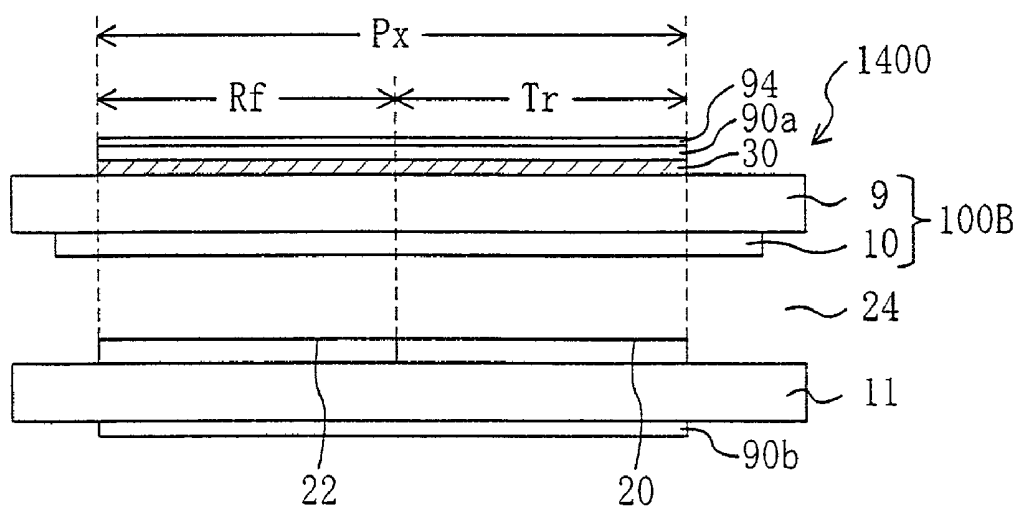


FIG. 17

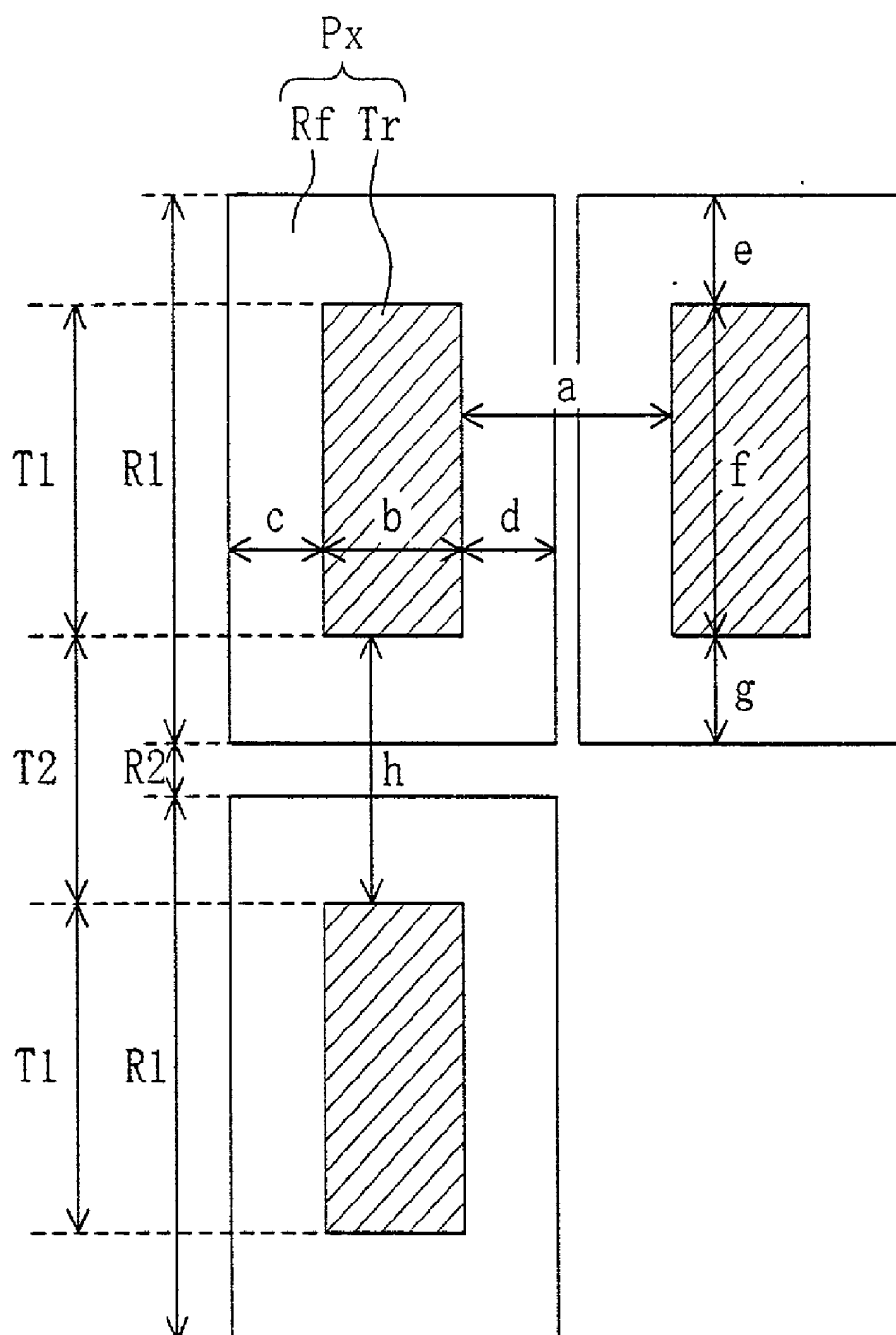


FIG. 18

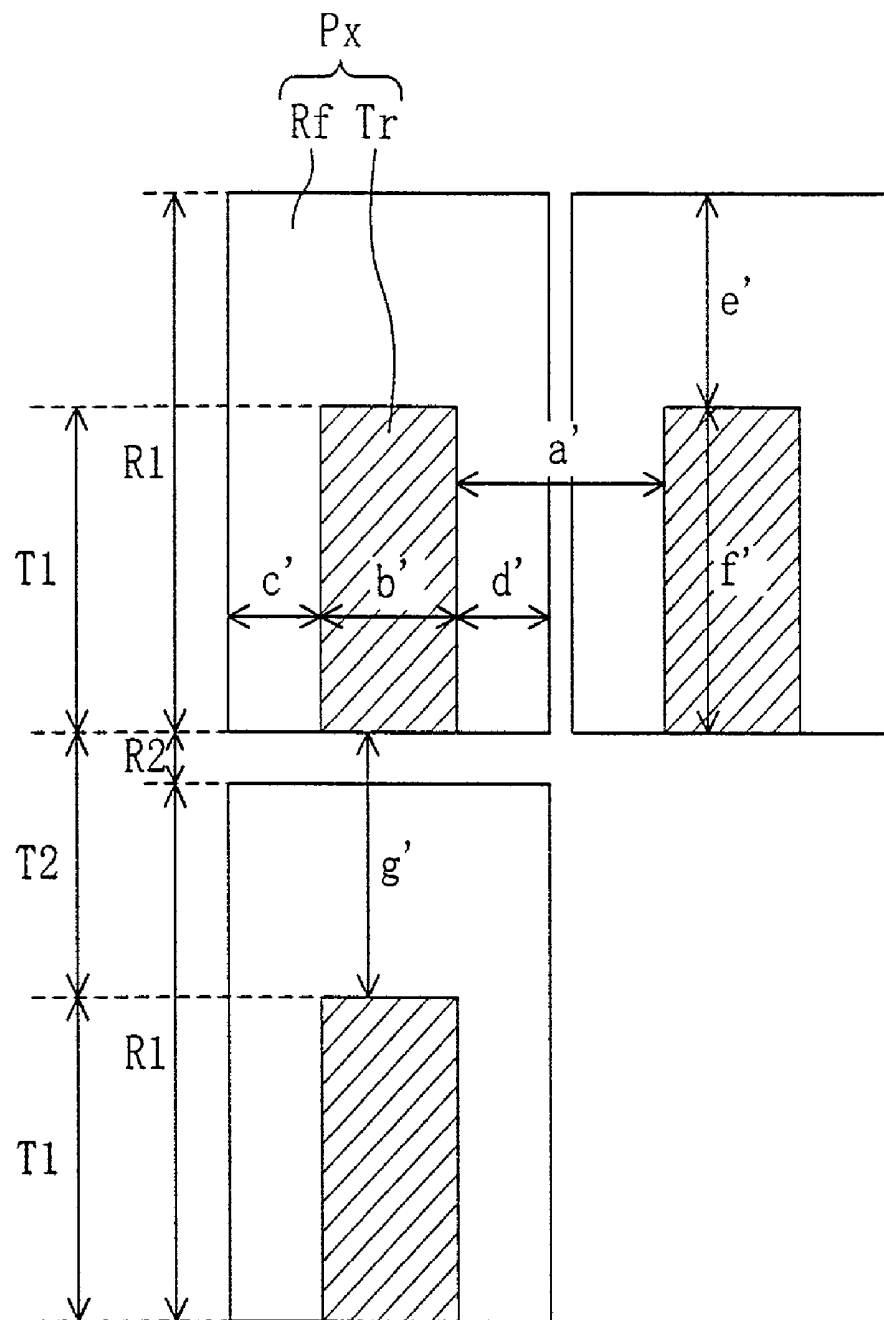
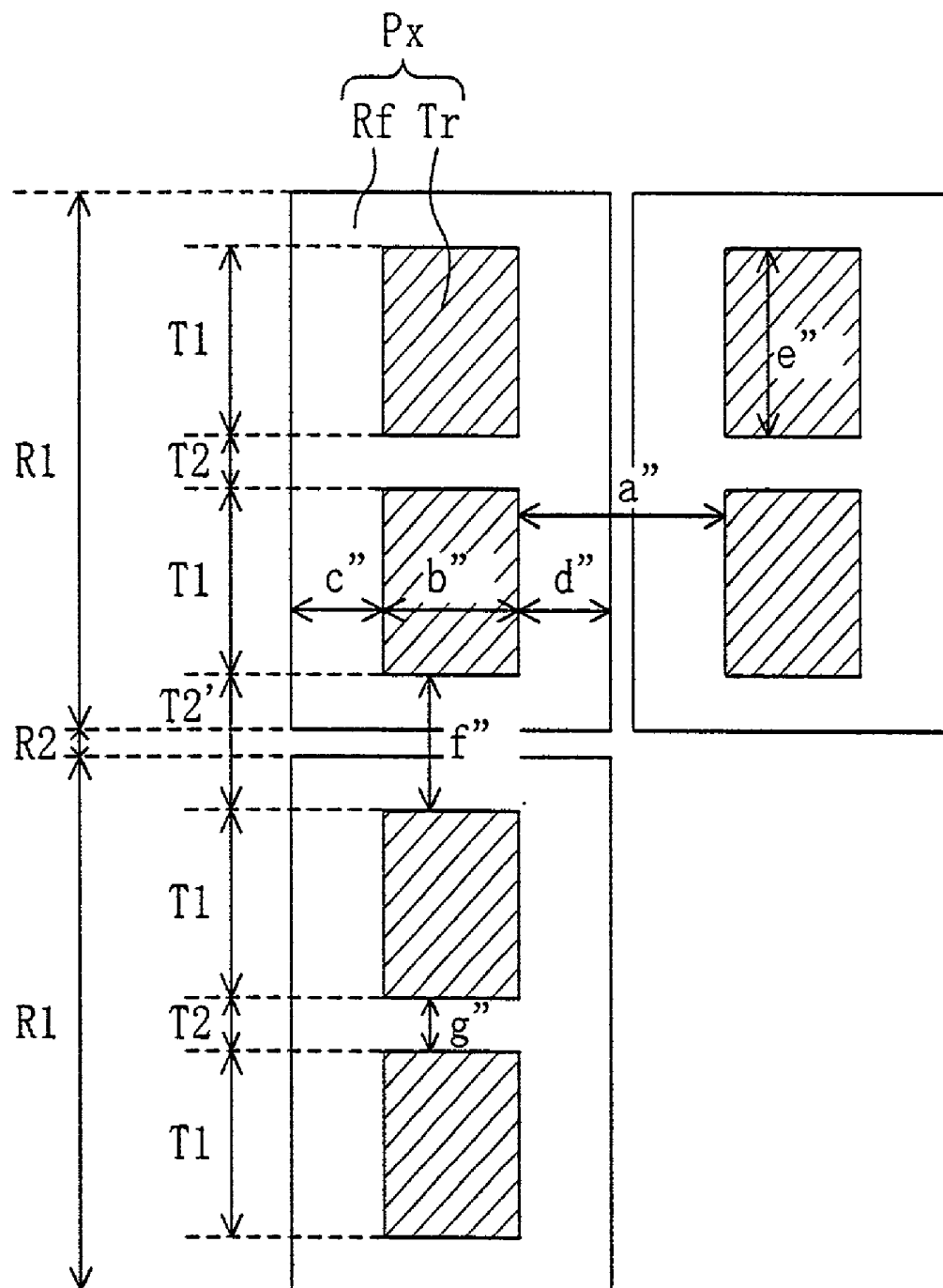


FIG. 19



LIQUID CRYSTAL DISPLAY DEVICE

BACKGROUND OF THE INVENTION

[0001] The present invention relates to a liquid crystal display device, and more particularly, it relates to a transmission/reflection type liquid crystal display device capable of display in both a transmission mode and a reflection mode.

[0002] Owing to their characteristics such as a small thickness and small power consumption, liquid crystal display devices are recently widely used in OA equipment such as a word processor and a personal computer, portable information equipment such as an electronic notebook and a camera-integrated VTR equipped with a liquid crystal monitor.

[0003] The liquid crystal display devices are divided roughly into two types: reflection type and transmission type. A liquid crystal display device is not a spontaneously luminous display device like a CRT (cathode-ray tube) and EL (electroluminescence), but light of a lighting device disposed behind a liquid crystal display panel (known as the so-called back light) is used for display in a transmission type liquid crystal display device and ambient light is used for display in a reflection type liquid crystal display device.

[0004] Since a transmission type liquid crystal display displays an image by using light from a back light, it can advantageously display bright images with a high contrast ratio without being affected by ambient brightness but disadvantageously consumes large power due to the back light included therein. A back light consumes approximately 50% or more of the power consumption in a general transmission type liquid crystal display device. Furthermore, in a very bright environment (for example, in the open air in fine weather), the visibility is degraded or the power consumption is further increased when the brightness of the back light is increased to attain sufficient visibility.

[0005] On the other hand, since a reflection type liquid crystal display device does not include a back light, it advantageously consumes very small power, but the brightness and the contrast ratio of display are disadvantageously largely affected by the environment such as ambient brightness. In particular, in a dark environment, the visibility is excessively degraded.

[0006] For the purpose of overcoming these problems, a liquid crystal display device having a function to display images in both the reflection mode and the transmission mode is disclosed in, for example, Japanese Laid-Open Patent Publication No.11-101992.

[0007] This transmission/reflection type liquid crystal display device includes, in every pixel region, a reflection pixel electrode for reflecting ambient light and a transmission pixel electrode for transmitting light from a back light, so that images can be displayed with the mode switched between the transmission mode and the reflection mode or in the both modes. Accordingly, the transmission/reflection type liquid crystal display device has both the characteristic of a reflection type liquid crystal display device, that is, the small power consumption, and the characteristic of a transmission type liquid crystal display device, that is, bright display with a high contrast ratio minimally affected by ambient brightness. Moreover, the disadvantage of a trans-

mission type liquid crystal display device that the visibility is degraded in a very bright environment (for example, in the open air in fine weather) can be suppressed.

[0008] The transmission/reflection type liquid crystal display device disclosed in Japanese Laid-Open Patent Publication No. 11-101992, however, has irregularities of the surface profile of the reflection electrode for increasing the brightness of display in the reflection mode (as is understood from, for example, **FIGS. 6 and 9** of the publication). Accordingly, the thickness of a liquid crystal layer is largely varied in a reflection region, and hence, it is difficult to realize optimal display. Furthermore, it is necessary to precisely control the shape of the irregularities (convexes/concaves) for preventing light interference caused by the irregularities, which disadvantageously increases the fabrication cost.

SUMMARY OF THE INVENTION

[0009] An object of the invention is providing a transmission/reflection type liquid crystal display device capable of realizing high quality display in which the thickness of a liquid crystal layer, in a reflection region in particular, can be precisely controlled.

[0010] The object is achieved by the following liquid crystal display device. The liquid crystal display device of this invention includes a first substrate; a second substrate; a liquid crystal layer disposed between the first substrate and the second substrate; and a plurality of pixel regions for display, and each of the plurality of pixel regions includes a transmission region for display in a transmission mode using light entering through the first substrate and a reflection region for display in a reflection mode using light entering through the second substrate, the first substrate includes, on a surface thereof facing the liquid crystal layer, a transparent electrode region defining the transmission region and a reflection electrode region defining the reflection region, and each surface facing the liquid crystal layer of the transparent electrode region and the reflection electrode region of the first substrate are flat, and the second substrate includes a light diffusion layer in the reflection region and includes, on a surface thereof facing the liquid crystal layer, a transparent electrode in the reflection region and the transmission region, and the surface thereof facing the liquid crystal layer is flat in the transmission region and the reflection region.

[0011] The first substrate (a substrate disposed on a side closer to a back light, such as an active matrix substrate) and the second substrate (a substrate disposed on a side closer to an observer, such as a color filter substrate) included in the present liquid crystal display device have flat surfaces facing the liquid crystal layer in the reflection region and the transmission region, and hence, the liquid crystal layer has a constant thickness in each of the reflection region and the transmission region. Accordingly, the thicknesses of the liquid crystal layer in the reflection region and the transmission region can be set optimally to the respective display modes. The light diffusion layer provided on the second substrate in the reflection region diffuses light entering the reflection region, so as to realize paper white display.

[0012] The word "being flat" herein means a surface state for making the thickness of the liquid crystal layer uniform so as not to cause degradation in display quality derived from variation in the thickness of the liquid crystal layer.

Specifically, when roughness (for example, an average value of height differences of the irregularities measured with a surface roughness meter) of a surface in a given region is smaller than $\frac{1}{100}$ of the thickness of the liquid crystal layer in the region, the surface can be regarded as being flat. A flat surface is not always a mirror surface.

[0013] The second substrate may include the light diffusion layer also in the transmission region, or the second substrate may include the light diffusion layer in the reflection region alone. When the light diffusion layer is formed in the transmission region of the second substrate, light passing through the transmission region is diffused so as to suppress surface reflection in the transmission region of the liquid crystal display device. As a result, display free from unevenness and glare can be realized. In other words, a portion of the light diffusion layer formed in the transmission region exhibits the so-called anti-glare effect. On the other hand, when the light diffusion layer is not formed in the transmission region, the optical efficiency can be improved in the transmission region. It can be appropriately determined depending upon the application of the liquid crystal display device which configuration is employed.

[0014] The second substrate may include a transparent substrate, and the light diffusion layer may be provided on a surface of the transparent substrate facing the liquid crystal layer or formed on a surface of the transparent substrate closer to an observer (namely, on a surface not facing the liquid crystal layer). It can be appropriately determined which configuration is employed depending upon the application of the liquid crystal display device in consideration of advantages and disadvantages of the respective configurations described below.

[0015] In the configuration where the light diffusion layer is provided on the surface facing the liquid crystal layer, blur (unclearness of contours) of a displayed image is advantageously minimally caused, but the fabrication process is complicated and the cost is increased. In the configuration where the light diffusion layer is selectively formed in the reflection region, when the pitch of patterns of disposing the light diffusion layer is close to the pixel pitch, there arises a problem that interference of light (moiré) is easily caused. This problem is conspicuous in a highly refined liquid crystal display device.

[0016] On the other hand, the configuration where the light diffusion layer is provided on the surface closer to an observer can be advantageously easily fabricated, easily applied to design change or common use of the light diffusion layer and fabricated at low cost, but blur of a displayed image tends to be caused. In order to suppress blur of a displayed image, a thinner substrate is preferred. A problem of double image due to the thickness of the substrate is never caused in disposing the light diffusion layer on either surface of the substrate differently from a case of disposing a reflection layer. This is because the light diffusion layer does not directly reflect incident light differently from the reflection layer.

[0017] The liquid crystal display device may further include a polarizing plate provided on a surface of the second substrate closer to the observer, and when the light diffusion layer is provided on the surface closer to the observer, the light diffusion layer is preferably provided between the transparent substrate and the polarizing plate.

When the light diffusion layer is provided between the transparent substrate and the polarizing plate, blur of a displayed image can be minimized. Furthermore, the light diffusion layer preferably functions as an adhesive layer for adhering the transparent substrate and the polarizing plate to each other. When an adhesive for adhering the polarizing plate onto the transparent substrate is formed from a material having a light diffusing function, the fabrication process can be simplified.

[0018] The light diffusion layer is preferably a dispersion type light diffusion layer containing a matrix material and particles having a refractive index different from that of the matrix material. When the light diffusion layer is formed from the material obtained by dispersing the particles in the matrix material, the light diffusion layer can be easily formed to have a flat surface as well as the thickness of the liquid crystal layer in the reflection region can be easily and accurately controlled.

[0019] The second substrate may include a transparent substrate and a color filter layer, and the color filter layer may function also as the light diffusion layer. When the matrix material where the particles with a different refractive index from the matrix material are dispersed is used for forming the color filter layer, the color filter layer can function also as the light diffusion layer, and thus, the fabrication process of the liquid crystal display device can be simplified.

[0020] The second substrate may include a plastic substrate, the plastic substrate may contain a matrix material and particles having a refractive index different from that of the matrix material, and the plastic substrate may function also as the light diffusion layer. When the matrix material where the particles with a different refractive index from the matrix material are dispersed is used for forming the plastic substrate, the plastic substrate can function also as the light diffusion layer, and thus, the fabrication process of the liquid crystal display device can be simplified.

[0021] A thickness of the liquid crystal layer in the reflection region is preferably about $\frac{1}{2}$ of a thickness of the liquid crystal layer in the transmission region. In a liquid crystal display device operated in a display mode using polarization (hereinafter simply referred to as the polarization mode), when the thickness of the liquid crystal layer in the reflection region is $\frac{1}{2}$ of the thickness of the liquid crystal layer in the transmission region, retardation of light passing through the reflection region can accord with retardation of light passing through the transmission region. Furthermore, the liquid crystal layer has a constant thickness in each region. As a result, high quality display can be realized.

[0022] The liquid crystal display device may further include an anti-glare layer provided on a surface of the second substrate closer to an observer. In the liquid crystal display device including the anti-glare layer on the surface of the second substrate closer to an observer, since the light diffusion layer is provided on the second substrate, light entering from the back light and passing through the transmission region and light entering from the side closer to the observer, reflected by the reflection electrode region and passing through the reflection region both pass through the light diffusion layer to be diffused by the light diffusion layer before going out toward the observer. Accordingly, moiré cause between irregularities of the anti-glare layer and the

pixel regions, moiré caused between the irregularities of the anti-glare layer and the transmission regions and moiré caused between the irregularities of the anti-glare layer and the reflection regions are all suppressed, resulting in realizing display free from unevenness.

[0023] When the liquid crystal display device includes the anti-glare layer provided on the surface of the second substrate closer to an observer, the second substrate may include a transparent substrate, and the light diffusion layer is preferably provided between the transparent substrate and the anti-glare layer. When the light diffusion layer is provided between the transparent substrate and the anti-glare layer, the effect to suppress moiré is remarkably exhibited. When the liquid crystal display device further include a polarizing plate between the transparent substrate and the anti-glare layer, the light diffusion layer is preferably provided between the transparent substrate and the polarizing plate. When the light diffusion layer is provided between the transparent substrate and the polarizing plate, blur of a displayed image can be suppressed.

BRIEF DESCRIPTION OF THE DRAWINGS

[0024] FIGS. 1A and 1B are schematic cross-sectional views of liquid crystal display devices 100 and 100' according to Embodiment 1 of the invention, respectively;

[0025] FIG. 2 is a schematic plan view of an active matrix substrate 100A included in the liquid crystal display devices 100 and 100' of Embodiment 1;

[0026] FIGS. 3A, 3B and 3C are schematic cross-sectional views for showing exemplified arrangement of a light diffusion layer 30 used in the liquid crystal display devices of Embodiment 1;

[0027] FIGS. 4A and 4B are schematic cross-sectional views of other liquid crystal display devices 200 and 200' according to Embodiment 1 of the invention, respectively;

[0028] FIG. 5 is a schematic cross-sectional view of another liquid crystal display device 300 according to Embodiment 1 of the invention;

[0029] FIG. 6 is a schematic cross-sectional view of still another liquid crystal display device 400 according to Embodiment 1 of the invention;

[0030] FIG. 7 is a schematic cross-sectional view of still another liquid crystal display device 500 according to Embodiment 1 of the invention;

[0031] FIG. 8 is a schematic cross-sectional view of still another liquid crystal display device 600 according to Embodiment 1 of the invention;

[0032] FIG. 9 is a schematic cross-sectional view of still another liquid crystal display device 700 according to Embodiment 1 of the invention;

[0033] FIG. 10 is a schematic cross-sectional view of still another liquid crystal display device 800 according to Embodiment 1 of the invention;

[0034] FIG. 11 is a schematic cross-sectional view of still another liquid crystal display device 900 according to Embodiment 1 of the invention;

[0035] FIGS. 12A and 12B are schematic cross-sectional views of liquid crystal display devices 1000 and 1000' according to Embodiment 2 of the invention, respectively;

[0036] FIG. 13 is a schematic cross-sectional view of another liquid crystal display device 1100 according to Embodiment 2 of the invention;

[0037] FIG. 14 is a schematic cross-sectional view of still another liquid crystal display device 1200 according to Embodiment 2 of the invention;

[0038] FIG. 15 is a schematic cross-sectional view of a liquid crystal display device 1300 according to Embodiment 3 of the invention;

[0039] FIG. 16 is a schematic cross-sectional view of another liquid crystal display device 1400 according to Embodiment 3 of the invention;

[0040] FIG. 17 is a top view for schematically showing arrangement of a transmission region Tr and a reflection region Rf in a pixel region Px of the liquid crystal display device 1300 or 1400 of Embodiment 3;

[0041] FIG. 18 is a top view for schematically showing another arrangement of the transmission region Tr and the reflection region Rf in the pixel region Px of the liquid crystal display device 1300 or 1400 of Embodiment 3; and

[0042] FIG. 19 is a top view for schematically showing still another arrangement of the transmission region Tr and the reflection region Rf in the pixel region Px of the liquid crystal display device 1300 or 1400 of Embodiment 3.

DETAILED DESCRIPTION OF THE PREFERRED EMBODIMENTS

[0043] Preferred embodiments of the invention will now be described with reference to the accompanying drawings. It is noted that the invention is not limited to the following embodiments.

[0044] Embodiment 1

[0045] In a liquid crystal display device of Embodiment 1, a light diffusion layer is disposed on the inside (on a side closer to a liquid crystal layer) of a second substrate (disposed on a side closer to an observer) opposing a first substrate (disposed on a side closer to a back light) with the liquid crystal layer sandwiched therebetween.

[0046] FIGS. 1A and 1B respectively show the schematic sectional structures of liquid crystal display devices 100 and 100' of this embodiment. FIGS. 1A and 1B are cross-sectional views of the liquid crystal display devices 100 and 100' of this embodiment, and FIG. 2 is a plan view of an active matrix substrate 100A used in the liquid crystal display devices 100 and 100'.

[0047] Each of the transmission/reflection type liquid crystal display devices 100 and 100' includes, as is shown in FIGS. 1A and 1B, a transmission region Tr and a reflection region Rf in each of plural pixel regions Px arranged in the form of a matrix, so as to display images in a transmission mode and a reflection mode. Images can be displayed in one of the transmission mode and the reflection mode or in both the modes. Typically, each of the liquid crystal display devices 100 and 100' includes a pair of polarizing plates (not shown) disposed in a parallel Nicols manner and a lighting

device (back light) (not shown) disposed on the side of the active matrix substrate **100A**. Each of **FIGS. 1A and 1B** shows one pixel region Px. The liquid crystal display device **100'** shown in **FIG. 1B** is different from the liquid crystal display device **100** of **FIG. 1A** in the structure of a light diffusion layer **30**.

[0048] As is shown in **FIG. 1A**, the liquid crystal display device **100** includes the active matrix substrate **100A**, a counter substrate (also known as a "color filter substrate") **100B** and a liquid crystal layer **24** sandwiched therebetween.

[0049] The active matrix substrate **100A** includes, as is shown in **FIG. 2**, a transparent electrode region **20** for defining a transmission region Tr of the liquid crystal display device **100** and a reflection electrode region **22** for defining a reflection region Rf. One pixel region Px includes the transmission region Tr and the reflection region Rf, and one pixel electrode region **1** includes the transparent electrode region **20** and the reflection electrode region **22**. The pixel electrode region **1**, the transparent electrode region **20** and the reflection electrode region **22** are defined as regions of the active matrix substrate **100A**, and the pixel region Px, the transmission region Tr and the reflection region Rf are defined as regions of the liquid crystal display device **100**.

[0050] The transparent electrode region **20** includes a transparent electrode **21**, and the reflection electrode region **22** includes a metal layer **23**. The metal layer **23** is formed to be in contact with the transparent electrode **21**, and is electrically connected to a drain electrode **16** of a TFT **4** through the transparent electrode **21** so as to function as a reflection electrode. In other words, the transparent electrode **21** and the metal layer **23** together function as a pixel electrode. The transparent electrode **21** is formed from a transparent conducting material such as ITO, and the metal layer **23** is formed from a metal having high reflectance such as Al.

[0051] In general, the metal layer **23** defining the reflection electrode region **22** is not necessarily electrically connected to the drain electrode **16**, and the metal layer **23** itself does not necessarily function as the reflection electrode. For example, an insulating layer (not shown) may be disposed below the metal layer **23**, so as to apply a voltage to the liquid crystal layer **24** within the reflection region Rf by using a separately formed transparent electrode.

[0052] As is shown in **FIG. 1A**, the active matrix substrate **100A** includes a transparent insulating substrate **11** such as a glass substrate, and a gate line **2**, a gate electrode **12** and an auxiliary capacitor electrode **8** are formed on the transparent substrate **11**. The active matrix substrate **100A** further includes a gate insulating film **7** covering the gate line **2**, the gate electrode **12** and the auxiliary capacitor electrode **8**. On a portion of the gate insulating film **7** above the gate electrode **12**, a semiconductor layer **13**, a channel protection layer **14**, a source electrode **15** and the drain electrode **16** are formed so as to together constitute the TFT **4**. The source electrode **15** and the drain electrode **16** of the TFT **4** are electrically connected to a source line **3** and a connection electrode **5**, respectively. Each of the source line **3** and the connection electrode **5** has a two-layer structure including a transparent conducting layer **17** and a metal layer **18**.

[0053] An interlayer insulating film **19** is formed so as to substantially cover the surface of the transparent substrate **11**

bearing the TFT **4**, and the interlayer insulating film **19** is planarized. On the planarized surface of the interlayer insulating film **19**, the transparent electrode **21** is formed, and on the transparent electrode **21**, the metal layer **23** is formed. The transparent electrode **21** is electrically connected to the connection electrode **5** through a contact hole **6** formed in the interlayer insulating film **19**, so as to be electrically connected to the drain electrode **16** through the connection electrode **5**. The metal layer **23** is electrically connected to the drain electrode **16** through the transparent electrode **21**.

[0054] Since the interlayer insulating film **19** is thus formed, the surface of the substrate **100A** can be flat and the metal layer **23** can be insulated from the TFT **4** and the various lines formed below the interlayer insulating film **19**. Therefore, the metal layer **23** can be formed above the TFT **4**, the gate line **2**, the source line **3** and the connection electrode **5**, resulting in increasing the display area.

[0055] The active matrix substrate **100A** described above is merely an example, and the structures of the TFT **4** and the connection electrode **5** can be appropriately modified. Also, any of known active matrix substrates can be applied as far as the surfaces of the transparent electrode region **20** and the reflection electrode region **22** facing the liquid crystal layer **24** are flat.

[0056] The transparent electrode region **20** and the reflection electrode region **22** of the active matrix substrate **100A** are preferably entirely flat. However, there is a case that a step is formed, for example, above the contact hole **6**. In this case, if the area of a region having a different thickness is 10% or less of the total area of the remaining region (for example, the total area of the reflection electrode region), such a step is allowable because degradation in the display quality caused by the step cannot be visually recognized.

[0057] The active matrix substrate **100A** can be fabricated by a known method from known materials. Furthermore, an alignment layer (not shown) may be formed on the surface of the active matrix substrate **100A** facing the liquid crystal layer **24** if necessary.

[0058] The counter substrate **100B** of the liquid crystal display device **100** includes, as is shown in **FIG. 1A**, a transparent insulating substrate **9** of glass or the like, and a color filter layer **10** and the light diffusion layer **30** formed on the surface of the transparent insulating substrate **9** facing the liquid crystal layer **24**. The counter substrate **100B** further includes a single counter electrode (not shown) for applying a voltage to the liquid crystal layer **24** on substantially the entire surface thereof. The counter electrode is typically provided on the surface of the color filter layer **10** facing the liquid crystal layer **24**. The color filter layer **10** typically includes color layers of red (R), green (G) and blue (B) and black matrixes disposed therebetween (none shown). The color filter layer **10** and the counter electrode (not shown) can be fabricated by a known method from known materials.

[0059] The light diffusion layer **30** is formed on substantially the entire surface of the counter substrate **100B**. Specifically, the light diffusion layer **30** is formed not only in the reflection region Rf but also in the transmission region Tr of the counter substrate **100B**.

[0060] A portion of the light diffusion layer **30** formed in the reflection region Rf diffuses ambient light entering the

liquid crystal display device **100** so as to realize display in white close to paper white. Also, a portion of the light diffusion layer **30** formed in the transmission region Tr diffuses ambient light entering the liquid crystal display device **100** so as to suppress surface reflection in the transmission region Tr of the liquid crystal display device **100** and realize display free from unevenness and glare. Specifically, the portion of the light diffusion layer **30** formed in the transmission region Tr exhibits an anti-glare effect.

[0061] The light diffusion layer **30** may be selectively formed in the reflection region Rf alone as in the liquid crystal display device **100'** shown in FIG. 1B. When the light diffusion layer **30** is thus formed, light transmitting the transmission region Tr is never diffused, resulting in improving optical efficiency. It may be appropriately selected depending upon the application of the liquid crystal display device whether or not the light diffusion layer **30** is formed in the transmission region Tr. The liquid crystal display device **100'** is different from the aforementioned liquid crystal display device **100** merely in the light diffusion layer **30** formed in the reflection region Rf alone, and hence, the description of the remaining structure is omitted.

[0062] As described above, the parallax derived from the thickness of the transparent substrate **9** can be suppressed by providing the light diffusion layer **30** on the surface of the transparent substrate **9** facing the liquid crystal layer **24**, so as to suppress blur of a displayed image.

[0063] The light diffusion layer **30** is preferably formed from a material obtained by dispersing, in a transparent matrix material (such as a resin of the acrylic family), a filler having a different refractive index from the matrix material. (Hereinafter, a light diffusion layer formed from such a material is designated as a "dispersion type light diffusion layer".) As compared with a light diffusion layer formed from a material obtained by roughening the surface of a thin film of a transparent material (such as an inorganic material like SiO₂) with a sandblaster or the like (hereinafter referred to as a "roughened light diffusion layer"), the dispersion type light diffusion layer is preferred because it can be easily formed in a uniform thickness and has a remarkable effect to suppress variation in the thickness of the liquid crystal layer **24**. Furthermore, in the dispersion type light diffusion layer **30** with a flat surface, the ratio of forward scattering to back scattering can be larger than in the roughened light diffusion layer having an irregular surface. Therefore, white light (that is, a phenomenon that the diffusion layer is visually recognized as a bright object) derived from back scattering can be suppressed, resulting in realizing bright display with a high contrast ratio.

[0064] The matrix material and the filler used for forming the dispersion type light diffusion layer **30** are preferably colorless and transparent. The light diffusion layer **30** provided on the surface of the transparent substrate **9** facing the liquid crystal layer **24** is subjected to a heat treatment process and a chemical treatment process during the fabrication of the liquid crystal display device **100** or **100'**, and hence, the matrix material and the filler are preferably sufficiently stable against these processes. Specifically, the matrix material and the filler preferably have heat resistance against heat of 200° C. or more and stability against water, alkalescency and chemicals such as isopropyl alcohol (IPA).

[0065] As the matrix material for the dispersion type light diffusion layer **30**, any of various polymers (such as resins of the polyester family, resins of the polyurethane family, epoxy resins, acrylic resins and amino resins) can be suitably used. In forming the light diffusion layer **30** selectively in the reflection region Rf as is shown in FIG. 1B, it is preferred from the viewpoint of productivity that the light diffusion layer **30** formed on the entire surface is patterned by photolithography, and that a material with photosensitivity and a development property (etching property) is used.

[0066] The filler may be an inorganic filler such as silica or an organic filler such as polyimide and polysulfone. Furthermore, the filler is preferably in the form of particles with an average particle size of 0.5 μm through 2.0 μm . When the average particle size is smaller than 0.5 μm , the light diffusing property may be spoiled, and when it exceeds 2.0 μm , the thickness of the light diffusion layer may be difficult to control or the surface flatness of the diffusion layer may be spoiled. The amount of the filler to be added depends also upon a difference in the refractive index from the matrix material and can be appropriately set so as to attain sufficient light diffusing property and light transmittance. When the amount is too large, although the light diffusing property of the light diffusion layer is improved, the light transmittance of the light diffusion layer itself is degraded. In order to realize sufficiently bright display, the transmittance (in a visible light region) of the light diffusion layer itself is preferably 90% or more. The thickness of the light diffusion layer is preferably in a range between 1 μm and 8 μm for attaining the sufficient light diffusing property. The aforementioned transmittance of the light diffusion layer is the transmittance of a light diffusion layer actually formed in this thickness. The transmittance is calculated as a percentage of a quantity of transmitted light, which is obtained by allowing perfect diffuse light to enter the light diffusion layer from the behind and receiving light having passed through the light diffusion layer in a normal line direction of the light diffusion layer at a collection angle of 2 degrees, to a quantity of incident light obtained without forming the light diffusion layer. The transmittance can be measured with, for example, a luminance meter BM7 manufactured by TOPCON.

[0067] The light diffusion layer **30** can be formed by any of known methods of forming a thin film. For example, it can be formed by applying, on the substrate, a solution obtained by dissolving and dispersing the filler in the polymer by spin coating (coating method), or by adhering a dry film of the resin in which the filler is dispersed onto the substrate (film adhering method).

[0068] The light diffusion layer **30** can be provided in any of various positions. Now, the possible positions of the light diffusion layer **30** will be described with reference to FIGS. 3A through 3C.

[0069] The light diffusion layer **30** may be provided between a transparent substrate **40** and a color filter layer **42** as shown in FIG. 3A, between the color filter layer **42** and a counter electrode **44** as shown in FIG. 3B, or between the counter electrode **44** and an alignment layer **46** as shown in FIG. 3C. Alternatively, in any of the three layered structures of FIGS. 3A through 3C, the color filter layer **42** and the counter electrode **44** can be replaced with each other.

[0070] Such a light diffusion layer **30** formed from the aforementioned dispersion type material can be easily

formed to attain surface roughness (variation in thickness) $\frac{1}{10}$ as small as the thickness of the liquid crystal layer (for example, $0.15 \mu\text{m}$ or less). The thickness of the liquid crystal layer depends upon the display mode (namely, the kind of liquid crystal material) and is approximately $1.5 \mu\text{m}$ through $10 \mu\text{m}$ in general. Therefore, when such a dispersion type light diffusion layer is employed, a liquid crystal display device including a liquid crystal layer with a uniform thickness optimal to the display mode can be easily realized.

[0071] Furthermore, on the flat surface of the light diffusion layer **30** formed from the dispersion type material, scattering (back scattering) is minimally caused and light is effectively scattered (forward scattered) within the light diffusion layer **30**. As a result, display with a high contrast ratio can be realized in the reflection mode. Also, in the arrangement shown in **FIG. 3C**, the light diffusion layer **30** can be used as an electric insulating layer. Specifically, the light diffusion layer **30** can be used as an overcoat layer formed between a driving electrode and an alignment layer in a STN liquid crystal display device or the like.

[0072] When the light diffusion layer **30** is disposed adjacent to (on or below) the color filter layer (typically having a thickness of $1 \mu\text{m}$ through $2 \mu\text{m}$), substantially no parallax is caused between the color filter layer and the light diffusion layer, and hence, blur is never caused, resulting in realizing high quality display. Also, since there is no need to provide irregularities on the surface of a reflector plate, it is possible to suppress a phenomenon occurring in a conventional reflector plate having irregularities that interference between light reflected by the irregularities becomes conspicuous through an anti-glare film so as to be observed as uneven display.

[0073] Now, control of the thickness of the liquid crystal layer **24** (also designated as a "cell gap") in the liquid crystal display device **100** or **100'** will be described.

[0074] A thickness d_r of the liquid crystal layer **24** in the reflection region **Rf** of the liquid crystal display device **100** or **100'** is set to be $\frac{1}{2}$ of a thickness d_t of the liquid crystal layer **24** in the transmission region **Tr**. Ambient light used for display in the reflection mode enters from above in **FIG. 1A** or **1B** (through the counter substrate **100B** or **100B'**), passes through the liquid crystal layer **24**, is reflected by the metal layer **23**, passes through the liquid crystal layer **24** again and goes out through the counter substrate **100B** or **100B'**, and thus passes the liquid crystal layer **24** twice. Accordingly, by setting the thickness d_r of the liquid crystal layer **24** in the reflection region **Rf** to $\frac{1}{2}$ of the thickness d_t of the liquid crystal layer **24** in the transmission region **Tr**, the optical path length of light used for display in the reflection mode can accord with the optical path length of light used for display in the transmission mode. In a mode where the polarization direction is changed (rotated) by the liquid crystal layer **24** (such as the TN mode, the STN mode and the ECB mode including the vertical alignment mode), high quality display can be realized by making the polarization direction of light having passed through the reflection region **Rf** accord with the polarization direction of light having passed through the transmission region **Tr** in each pixel region **Px**.

[0075] In order to sufficiently satisfy the condition for the thicknesses of the liquid crystal layer **24**, the thicknesses d_t and d_r of the liquid crystal layer **24** are preferably constant

in the transmission region **Tr** and the reflection region **Rf**, respectively. The active matrix substrate **100A** included in the present liquid crystal display device **100** or **100'** has the flat surfaces facing the liquid crystal layer **24** in the transparent electrode region **20** and the reflection electrode region **22** as described above, and the light diffusion layer **30** provided on the counter substrate **100B** or **100B'** also has a flat surface facing the liquid crystal layer **24**. Therefore, the thicknesses of the liquid crystal layer **24** are respectively constant in the transmission region **Tr** and the reflection region **Rf**, so as to realize high quality display.

[0076] Specifically, variation in the thickness of the liquid crystal layer **24** in the transmission region **Tr** and the reflection region **Rf** in the present liquid crystal display device **100** or **100'** is as small as 0.03 through 0.05 in the standard deviation σ (obtained by measuring the thicknesses at 25 points on the plane). On the other hand, the variation in the thickness of the liquid crystal layer in the reflection region in the liquid crystal display device using the reflection electrode with an irregular surface disclosed in Japanese Laid-Open Patent Publication No. 11-101992 is as large as 0.12 through 0.15 in the standard deviation σ and sometimes exceeds $\frac{1}{10}$ of the thickness of the liquid crystal layer. As is obvious from this fact, the transmission/reflection type liquid crystal display devices **100** and **100'** of this invention can realize higher quality display than the conventional display device.

[0077] Now, a method of controlling the thickness (cell gap) of the liquid crystal layer **24** in a liquid crystal display device **200** and **200'** according to this invention will be described with reference to **FIGS. 4A** and **4B**.

[0078] The liquid crystal display devices **200** and **200'** are respectively different from the liquid crystal display devices **100** and **100'** in including an insulating film **48** and a metal layer **23'** formed thereon instead of the metal layer **23** formed on the active matrix substrate **100A** shown in **FIGS. 1A** and **1B**. The other composing elements of the liquid crystal display devices **200** and **200'** are substantially the same as those of the liquid crystal display devices **100** and **100'**, respectively, and hence, the description is omitted by using like reference numerals to refer to like elements.

[0079] In the case where the light diffusion layer **30** is formed on substantially the entire surface of the counter substrate **100B** as in the liquid crystal display device **200** of **FIG. 4A**, as is shown in formula (1) below, the thickness d_r ($=D2$) of the liquid crystal layer **24** in the reflection region **Rf** can be set to $\frac{1}{2}$ of the thickness d_t of the liquid crystal layer **24** in the transmission region **Tr** by equalizing the thickness ($D1$) of the insulating layer **48** to the diameter ($D2$) of a spacer **52**. The thickness of the metal layer **23'** is negligible because it is very thin as compared with the insulating layer **48**.

$$D1 + D2 = d_t (D1 = D2 = d_r) \quad (1)$$

[0080] On the other hand, in the case where the light diffusion layer **30** is selectively formed in the reflection region **Rf** alone as in the liquid crystal display device **200'** of **FIG. 4B**, as is shown in formula (2) below, the thickness d_r ($=D2$) of the liquid crystal layer **24** in the reflection region **Rf** can be set to $\frac{1}{2}$ of the thickness d_t of the liquid crystal layer **24** in the transmission region **Tr** by equalizing the diameter $D2$ of the spacer **52** to the sum of the thickness $D1'$

of the insulating layer 48 and the thickness D3 of the light diffusion layer 30.

$$D1'+D2+D3=dt(D1'+D3=D2=dr) \quad (2)$$

[0081] The aforementioned relationship is an optimal relationship in the design, and hence may not be satisfied in actual fabrication of a liquid crystal cell due to influence of processing accuracy. However, when the thickness dr of the liquid crystal layer 24 in the reflection region Rf and the thickness dt of the liquid crystal layer 24 in the transmission region Tr are shifted by 15% or less of the design values, the display quality can be improved as compared with that attained by the conventional display device.

[0082] Now, other examples of the structures of the light diffusion layer 30 and the reflection electrode region 22 usable in the liquid crystal display device of this embodiment will be described. The reflection electrode region 22 can be formed from a single metal layer 23 or formed from the insulating layer 48 and the metal layer 23' formed thereon as is exemplified in the liquid crystal display devices 100 and 200 of Embodiment 1. In these cases, the thickness of the liquid crystal layer 24 in the reflection region Rf can be adjusted by controlling the thicknesses of the metal layer 23 and the insulating layer 48, respectively. In the following description, the detailed structures of the transparent electrode region 20 and the reflection electrode region 22 are omitted for simplification. Also, in the drawings referred to in the following description, the same reference numerals are used to refer to elements having substantially the same functions as those of the aforementioned liquid crystal display devices of Embodiment 1 so as to omit the description.

[0083] In a liquid crystal display device 300 of FIG. 5, the light diffusion layer 30 is selectively formed in the reflection region Rf alone as in the liquid crystal display device 100' of FIG. 1B, whereas the thickness of the liquid crystal layer 24 in the reflection region Rf is adjusted by controlling the thickness of the light diffusion layer 30. Since the light diffusion layer 30 is not formed in the transmission region Tr in the liquid crystal display device 300 as in the liquid crystal display device 100', optical loss caused through diffusion of light passing through the transmission region Tr can be avoided, so as to improve the optical efficiency.

[0084] A liquid crystal display device 400 of FIG. 6 includes the light diffusion layer 30 selectively formed in the reflection region Rf and a transparent layer 54 selectively formed in the transmission region Tr. The transparent layer 54 has the same thickness as the light diffusion layer 30 and has a flat surface. The color filter layer 10 is formed on the flat face formed by the light diffusion layer 30 and the transparent layer 54. The thickness of the liquid crystal layer 24 in the reflection region Rf is adjusted by controlling the thickness of the reflection electrode region 22. The transparent layer 54 may be formed from, for example, an acrylic resin or a polyimide resin similarly to the matrix material for the dispersion type light diffusion layer. This structure is advantageous because the thickness of the liquid crystal layer can be comparatively easily controlled owing to the flatness of the surface, facing the liquid crystal layer, of the substrate bearing the light diffusion layer (namely, the substrate closer to an observer).

[0085] A liquid crystal display device 500 of FIG. 7 includes a color filter layer 60 having a light diffusion color

filter region 60a with a function to diffuse light and a general color filter region 60b. The light diffusion color filter region 60a is selectively provided correspondingly to the reflection region Rf. Since the light diffusing function is thus provided to a part of the color filter layer 60, the entire structure can be simplified. The light diffusion color filter region 60a can be formed from a material obtained by dispersing a filler having a different refractive index in a material for forming the general color filter layer. For example, when a color filter layer with a thickness of approximately 1.7 μm is formed from a dispersion type material obtained by adding 30 wt % of a filler in the form of particles (such as silica) with a particle size of 1 μm to a general material for a color filter layer, the light diffusion color filter region 60a can be formed. The light diffusion color filter region 60a has surface smoothness and thickness uniformity equivalent to those of the color filter region 60b where no filler is dispersed.

[0086] Needless to say, a color filter layer 60' including the light diffusion color filter region 60a on substantially the entire surface can be provided on the counter substrate as in a liquid crystal display device 600 of FIG. 8. It is appropriately determined depending upon the application of the liquid crystal display device whether the light diffusion color filter region 60a is selectively formed in the reflection region Rf alone or formed on the entire surface similarly to the determination regarding the light diffusion layer 30.

[0087] In a liquid crystal display device 700 of FIG. 9, a glass substrate 62 of the counter substrate has an irregular surface (light diffusion layer) 64. Random irregularities are selectively formed in a portion corresponding to the reflection region Rf on the surface of the glass substrate (for example, #1737; manufactured by Corning Inc.). The random irregularities can be formed by, for example, sandblast. The irregularities formed by the sandblast have a size on the plane (that can be approximated to the diameter) of approximately 2 through 5 μm , and a depth of approximately 0.5 through 1 μm , and their centers are randomly distributed on the plane. Furthermore, when a planarizing film (of, for example, SiO_2) having a refractive index different from the glass substrate 62 is formed on the glass substrate 62 having the irregular surface, the ability to diffuse light can be improved. In such a structure, the irregular surface of the glass substrate 62 or the combination of the irregular surface and the planarizing film (not shown) functions as the light diffusion layer. Although the light diffusion layer 64 is selectively formed in the reflection region Rf in FIG. 9, the light diffusion layer 64 may be formed on substantially the entire surface of the substrate as in the aforementioned structures. Furthermore, the glass substrate 62 may be replaced with a plastic substrate.

[0088] Moreover, when a plastic substrate 70 with a polarization function is used as in a liquid crystal display device 800 of FIG. 10, the polarizing plate (not shown) on the side of the counter substrate can be omitted so as to simplify the structure. The plastic substrate 70 occasionally has retardation derived from its fabrication method, and hence, the retardation (phase difference) of the plastic substrate is preferably as small as possible from the viewpoint of the contrast ratio. The liquid crystal display device 800 has the same structure as the liquid crystal display device 100 of Embodiment 1 except for the plastic substrate 70 with the polarization function. The plastic substrate 70 with the

polarization function may be used in any of the aforementioned liquid crystal display devices.

[0089] A transparent insulating substrate used in the counter substrate may have a light diffusing function as in a liquid crystal display device **900** of **FIG. 11**. A plastic substrate **80** of the liquid crystal display device **900** is formed from a polymer material where a filler is dispersed and has a light diffusing function. The plastic substrate **800** is formed from, for example, a material obtained by dispersing 15 through 20 wt % of a silica filler in the form of particles (with an average particle size of 1 μm) in PET or PES (a matrix material).

[0090] In each of the liquid crystal display devices of **FIGS. 7 through 9** and **11**, there is no need to separately form a light diffusion layer. Therefore, they have advantages that the fabrication process can be simplified (namely, the fabrication cost can be reduced) and that the thickness can be further reduced in addition to the above-described advantages of the liquid crystal display devices of this embodiment. Also, when the plastic substrate with the polarization function is used as in the liquid crystal display device **800** of **FIG. 10**, one polarizing plate can be omitted, so as to further simplify the fabrication process and further reduce the thickness of the liquid crystal display device.

[0091] Embodiment 2

[0092] A liquid crystal display device according to Embodiment 2 is different from the liquid crystal display devices of Embodiment 1 in including a light diffusion layer disposed on the outside of a second substrate (a side closer to an observer) opposing a first substrate (closer to a back light) with a liquid crystal layer sandwiched therebetween. In drawings showing liquid crystal display devices of Embodiment 2, the same reference numerals are used to refer to elements substantially having the same functions as those used in the liquid crystal display devices of Embodiment 1 so as to omit the description.

[0093] **FIGS. 12A and 12B** respectively show the schematic sectional structures of the liquid crystal display devices **1000** and **1000'** of Embodiment 2. The liquid crystal display devices **1000** and **1000'** of **FIGS. 12A and 12B** are respectively different from the liquid crystal display devices **200** and **200'** of **FIGS. 4A and 4B** in disposing the light diffusion layer **30** on the outside (a side closer to an observer) of the transparent substrate **9**.

[0094] When the light diffusion layer **30** is selectively formed correspondingly to the reflection region **Rf** on the outside of the transparent substrate **9** as is shown in **FIG. 12B**, the light diffusion layer **30** is preferably slightly larger than the reflection region **Rf**. Specifically, the area of the light diffusion layer **30** is preferably increased in accordance with a distance between the light diffusion layer **30** and a metal layer (reflection layer) **23'** increased by a dimension corresponding to the thickness of the transparent substrate **9** (of, for example, 0.7 mm), so as to allow most of light obliquely entering the metal layer **23'** or most of light obliquely going out from the metal layer **23'** to pass through the light diffusion layer **30**. The area of the light diffusion layer **30** provided correspondingly to the reflection region **Rf** can be appropriately set also in consideration of the liquid crystal display mode and the like.

[0095] The liquid crystal display devices **1000** and **1000'** are more advantageous than the liquid crystal display

devices **200** and **200'** of Embodiment 1 each including the light diffusion layer **30** on the inside of the transparent substrate **9** in easiness in the fabrication, applicability to design change or common use of the light diffusion layer and low fabrication cost. Specifically, the light diffusion layer **30** is formed on the outside of the transparent substrate **9** after adhesion of the substrates **100A** and **100B** and injection of a liquid crystal, and therefore, the yield can be avoided from lowering due to the formation of the light diffusion layer **30**. Also, although the light diffusion layer **30** may be formed by any of various methods as in Embodiment 1, it is preferable to use the light diffusion layer **30** formed from a film. The film for forming the light diffusion layer can be commonly used among liquid crystal display devices of various types (for example, having different panel sizes), and the film can be used flexibly in case of a change in the design of the liquid crystal display device.

[0096] The effect to simplify the fabrication (namely, the effect to decrease the cost) is more remarkable in the structure where the light diffusion layer **30** is formed on the entire display region as in the liquid crystal display device **1000** than in the structure where the light diffusion layer **30** is selectively formed as in the liquid crystal display device **1000'**. In particular, in a liquid crystal display device **1100** of **FIG. 13** including a pair of polarizing plates **90a** and **90b**, when a material having a light diffusing function is used as an adhesive for adhering the polarizing plate **90a** onto the outside of the transparent substrate **9**, a light diffusion layer **30a** can be used also as the adhesive layer, resulting in further simplifying the fabrication process. Furthermore, also for the purpose of suppressing blur of a displayed image, the light diffusion layer **30** is preferably adjacent to the transparent substrate **9**. Therefore, also from the viewpoint of suppressing blur of a displayed image, the light diffusion layer **30a** is effectively used as the adhesive layer between the polarizing plate **90a** and the transparent substrate **9**.

[0097] As the material for the light diffusion layer also serving as the adhesive, a dispersion type material obtained by adding a filler to any of various resin adhesives (working as a matrix material) can be suitably used. Examples of the resin adhesives are adhesives of the phenol family, the acrylic family, the polyimide family, the epoxy family and the silicon family. As the filler, any of the fillers for the dispersion type light diffusion layer described in Embodiment 1 can be widely used.

[0098] **FIG. 14** is a schematic sectional view of another liquid crystal display device **1200** of this embodiment. In the liquid crystal display device **1200**, the light diffusion layer **64** (irregular surface) of the liquid crystal display device **700** of **FIG. 9** described in Embodiment 1 is formed on the outside of a glass substrate **62**. The liquid crystal display device **1200** can be fabricated by substantially the same method as the liquid crystal display device **700**.

[0099] In the structure where the light diffusion layer **64** is selectively formed correspondingly to the reflection region **Rf** as is shown in **FIG. 14**, the light diffusion layer **64** is preferably larger than the reflection region **Rf** similarly to the light diffusion layer **30** of the liquid crystal display device **1000'** of **FIG. 12B**.

[0100] Furthermore, the ability to diffuse light can be improved when a planarizing film (of, for example, SiO_2)

having a different refractive index from the glass substrate **62** is formed on the glass substrate **62** having the irregular surface. In such a structure, the irregular surface of the glass substrate **62** or the combination of the irregular surface and the planarizing film (not shown) functions as the light diffusion layer. In the structure where a polarizing plate is disposed on the outside of the glass substrate **62**, when a transparent material having a different refractive index from the glass substrate **62** is used as a material for an adhesive layer for adhering the polarizing plate (not shown) onto the outside of the glass substrate **62**, the adhesive layer can function as the planarizing film.

[0101] Although the light diffusion layer **64** is selectively formed correspondingly to the reflection region Rf in FIG. 14, the light diffusion layer **64** can be formed on substantially the entire surface of the substrate as in the aforementioned structures. Also, the glass substrate **62** can be replaced with a plastic substrate.

[0102] Embodiment 3

[0103] A liquid crystal display device according to Embodiment 3 is similar to the liquid crystal display devices of Embodiment 2 in disposing a light diffusion layer on the outside (a side closer to an observer) of a second substrate (closer to the observer), but is different in further including an anti-glare layer on the outside of the second substrate. In drawings showing liquid crystal display devices of Embodiment 3, the same reference numerals are used to refer to elements having substantially the same functions as those of the liquid crystal display devices of Embodiment 1 and 2 so as to omit the description. Also, detailed description of the structures of the transparent electrode region **20** and the reflection electrode region **22** is omitted for simplification.

[0104] FIG. 15 is a schematic sectional view of a liquid crystal display device **1300** of Embodiment 3. The liquid crystal display device **1300** of FIG. 15 is obtained by providing an anti-glare layer **94** on the surface closer to an observer of the liquid crystal display device **1000** of FIG. 12A.

[0105] The anti-glare layer **94** formed on the surface closer to an observer of the liquid crystal display device **1300** of Embodiment 3 is formed from a transparent material and has irregularities on its surface. The anti-glare layer **94** diffusely reflects (scatters) ambient light mainly entering from the side closer to the observer. As a result, mirror reflection (direct reflection) of ambient light on the surface closer to the observer of the liquid crystal display device **1300** can be suppressed, so as to realize display with good visibility free from reflection of ambient images.

[0106] The anti-glare layer **94** is formed from, for example, AGS1 or AG30 manufactured by Nitto Denko Corporation. The optical characteristic of the anti-glare layer **94** is set in accordance with a desired anti-glare effect, and the pitch of the irregularities (average distance between the irregularities) of the anti-glare layer **94** is distributed to some extent within a range between approximately 30 μm and approximately 150 μm . For example, the pitches of the irregularities of the aforementioned products of Nitto Denko Corporation are distributed between approximately 47 μm and approximately 52 μm in AGS1 and between approximately 95 μm and approximately 140 μm in AG30.

[0107] In the case where the aforementioned anti-glare layer for realizing good display is provided in a liquid crystal

display device having a conventional structure, in particular, in a liquid crystal display device having a pixel pitch (either the lateral pitch or longitudinal pitch) of approximately 120 μm or less, the display is sometimes uneven. Since such display failure is more conspicuous as ambient light is more intense, the display quality is lower in use in the open air in fine weather.

[0108] The present inventors have found that the display failure derives from moiré caused between the anti-glare layer having the irregularities and plural pixel regions arranged in a matrix. Moiré occurs due to light interference caused when plural periodic structures are overlapped.

[0109] The display failure is caused in both a transmission type liquid crystal display device and a reflection type liquid crystal display device, but is more conspicuous in a transmission/reflection type liquid crystal display device having a transmission region for the transmission mode display and a reflection region for the reflection mode display in each pixel region. The reason is as follows:

[0110] In a transmission/reflection type liquid crystal display device, each pixel region includes a transmission region and a reflection region, and hence, not only plural pixel regions are arranged in a periodic pattern but also plural transmission regions and plural reflection regions are also respectively arranged in periodic patterns. Accordingly, moiré is caused by the irregularities of the anti-glare layer, the pixel regions, the transmission regions and the reflection regions, resulting in causing conspicuous display failure. The display failure is more conspicuous when a difference between the pitch of the irregularities of the anti-glare layer and the pitch of the periodic structure is smaller.

[0111] In the liquid crystal display device **1300** of this embodiment, the counter substrate **100B** includes the light diffusion layer **30**, and hence, paper white display can be realized as in the liquid crystal display devices of Embodiments 1 and 2. Furthermore, the light diffusion layer **30** suppresses the occurrence of the above-described moiré, so that the display can be free from unevenness.

[0112] Specifically, since the light diffusion layer **30** is provided on the counter substrate **100B** in the liquid crystal display device **1300**, both light entering from the back light and passing through the transmission region Tr and light entering from the side closer to an observer, reflected by the reflection electrode region **22** and passing through the reflection region Rf pass through the light diffusion layer **30** so as to be diffused by the light diffusion layer **30** before going out toward the observer. Accordingly, moiré caused between the irregularities of the anti-glare layer **94** and the pixel regions Px, moiré caused between the irregularities of the anti-glare layer **94** and the transmission regions Tr and moiré caused between the irregularities of the anti-glare layer **94** and the reflection regions Rf are all suppressed, resulting in realizing display free from unevenness.

[0113] The effect to suppress the occurrence of moiré is more remarkable in the structure where the light diffusion layer **30** is provided on the outside (a side closer to an observer) of the counter substrate **100B** as in the liquid crystal display device **1300** of FIG. 15 than in the structure where the light diffusion layer **30** is provided on the inside (a side closer to the liquid crystal layer) of the counter

substrate **100B**. Furthermore, the light diffusion layer **30** is formed preferably on the entire surface of the counter substrate **100B** for suppressing the occurrence of moiré.

[0114] Moreover, in a liquid crystal display device **1400** of **FIG. 16** including a pair of polarizing plates **90a** and **90b**, in order to suppress blur of a displayed image, the light diffusion layer **30** is preferably provided between the polarizing plate **90a** disposed on the outside of the transparent substrate **9** and the transparent substrate **9**. In addition, from the viewpoint of simplification of the fabrication process, the light diffusion layer **30** preferably also serves as an adhesive layer for adhering the polarizing plate **90a** to the transparent substrate **9**.

[0115] Also in any of the liquid crystal display devices of this embodiment, the arrangement of the transmission region **Tr** and the reflection region **Rf** in the pixel region **Px** can be appropriately set in accordance with the specification of the liquid crystal display device. Now, examples of the arrangement of the transmission region **Tr** and the reflection region **Rf** and periodic structures causing the moiré in the exemplified arrangement will be described.

[0116] First, as is shown in **FIG. 17**, the transmission region **Tr** may be provided at the center of the pixel region **Px** with the reflection region **Rf** surrounding the transmission region **Tr**. In this arrangement, along the longitudinal (lengthwise) direction of the pixel regions **Px**, there are a periodic structure where the pixel regions **Px** are arranged in a predetermined pixel pitch, a periodic structure where the transmission regions **Tr** each having a predetermined width T_1 are arranged at a predetermined interval T_2 , and a periodic structure where the reflection regions **Rf** each having a predetermined width R_1 are arranged at a predetermined interval R_2 . Also, along the lateral (widthwise) direction of the pixel regions **Px**, there are similar plural periodic structures. Table 1 below shows exemplified values of dimensions indicated with reference characters a through h in **FIG. 17**. The values listed in Table 1 are values in a 2-inch type liquid crystal panel where the area ratio between the reflection region **Rf** and the transmission region **Tr** is 9:1.

TABLE 1

	a	b	c	d	e	f	g	h
Width (μm)	68	31	28	28	68	45	59	138

[0117] Alternatively, as is shown in **FIG. 18**, the transmission region **Tr** may be provided with its one side defining its outline overlapping one side of the pixel region **Px** defining its outline, with the reflection region **Rf** provided in a U-shape surrounding the transmission region **Tr**. Also in this arrangement, there are plural periodic structures respectively along the longitudinal and lateral directions of the pixel regions **Px**. Table 2 shows exemplified values of dimensions indicated with reference characters a' through g' in **FIG. 18**. The values listed in Table 2 are values in a 2-inch type liquid crystal panel where the area ratio between the reflection region **Rf** and the transmission region **Tr** is 6:4 or 8:2.

TABLE 2

	a'	b'	c'	d'	e'	f'	g'
In the case where the area ratio is 6:4:							
Width (μm)	53	44	24	24	50	112	71
In the case where the area ratio is 8:2:							
Width (μm)	62	51	27	27	146	135	188

[0118] Alternatively, plural transmission regions **Tr** may be formed within each pixel region **Px** as is shown in **FIG. 19**. In this case, along the longitudinal direction of the pixel regions **Px**, there are a periodic structure where the pixel regions **Px** are arranged in a predetermined pixel pitch, a periodic structure where the transmission regions **Tr** each having a predetermined width T_1 are arranged at predetermined intervals T_2 and T_2' alternately, and a periodic structure where the reflection regions **Rf** each having a predetermined width R_1 are arranged at a predetermined interval R_2 . Also, along the lateral direction of the pixel regions **Px**, there are plural periodic structures. Table 3 shows exemplified values of dimensions indicated with reference characters a" through g" in **FIG. 19**. The values listed in Table 3 are values in a 3.5-inch type liquid crystal panel where the area ratio between the reflection region **Rf** and the transmission region **Tr** is 3:7, 5:5 or 8:2.

TABLE 3

	a"	b"	c"	d"	e"	f"	g"
In the case where the area ratio is 3:7:							
Width (μm)	34	80	14	14	115	50	40
In the case where the area ratio is 5:5:							
Width (μm)	59	55	26	26	114	49	40
In the case where the area ratio is 8:2:							
Width (μm)	85	28	39	39	114	50	40

[0119] In the liquid crystal display devices **1300** and **1400** of this embodiment, moiré caused between the plural periodic structures as exemplified above and the periodic structure of the irregularities of the anti-glare layer **94** can be suppressed, resulting in realizing display free from unevenness.

[0120] The combination of an active matrix substrate and a counter substrate can be appropriately selected among those included in the liquid crystal display devices described in the embodiments. Furthermore, active matrix liquid crystal display devices using TFTs (thin film transistors) are described in the embodiments, which does not limit the invention. The invention is applicable to any other liquid crystal display device such as an active matrix liquid crystal display device using MIM elements and a passive matrix liquid crystal display device.

What is claimed is:

1. A liquid crystal display device comprising:
 - a first substrate;
 - a second substrate;

a liquid crystal layer disposed between the first substrate and the second substrate; and

a plurality of pixel regions for display,

wherein each of the plurality of pixel regions includes a transmission region for display in a transmission mode using light entering through the first substrate and a reflection region for display in a reflection mode using light entering through the second substrate,

the first substrate includes, on a surface thereof facing the liquid crystal layer, a transparent electrode region defining the transmission region and a reflection electrode region defining the reflection region, each surface facing the liquid crystal layer of the transparent electrode region and the reflection electrode region of the first substrate being flat, and

the second substrate includes a light diffusion layer in the reflection region and includes, on a surface thereof facing the liquid crystal layer, a transparent electrode in the reflection region and the transmission region, the surface thereof facing the liquid crystal layer being flat in the transmission region and the reflection region.

2. The liquid crystal display device of claim 1,

wherein the second substrate includes the light diffusion layer in the transmission region.

3. The liquid crystal display device of claim 1,

wherein the second substrate includes the light diffusion layer in the reflection region alone.

4. The liquid crystal display device of claim 1,

wherein the second substrate includes a transparent substrate, and the light diffusion layer is provided on a surface of the transparent substrate facing the liquid crystal layer.

5. The liquid crystal display device of claim 1,

wherein the second substrate includes a transparent substrate, and the light diffusion layer is formed on a surface of the transparent substrate closer to an observer.

6. The liquid crystal display device of claim 5, further comprising a polarizing plate provided on a surface of the second substrate closer to an observer,

wherein the light diffusion layer is provided between the transparent substrate and the polarizing plate.

7. The liquid crystal display device of claim 6,

wherein the light diffusion layer functions as an adhesive layer for adhering the transparent substrate and the polarizing plate to each other.

8. The liquid crystal display device of claim 1,

wherein the light diffusion layer contains a matrix material and particles having a refractive index different from that of the matrix material.

9. The liquid crystal display device of claim 1,

wherein the second substrate includes a transparent substrate and a color filter layer, and

the color filter layer functions also as the light diffusion layer.

10. The liquid crystal display device of claim 1,

wherein the second substrate includes a plastic substrate,

the plastic substrate contains a matrix material and particles having a refractive index different from that of the matrix material, and

the plastic substrate functions also as the light diffusion layer.

11. The liquid crystal display device of claim 1,

wherein a thickness of the liquid crystal layer in the reflection region is about $\frac{1}{2}$ of a thickness of the liquid crystal layer in the transmission region.

12. The liquid crystal display device of claim 1, further comprising an anti-glare layer provided on a surface of the second substrate closer to an observer.

13. The liquid crystal display device of claim 12,

wherein the second substrate includes a transparent substrate, and

the light diffusion layer is provided between the transparent substrate and the anti-glare layer.

14. The liquid crystal display device of claim 13, further comprising a polarizing plate between the transparent substrate and the anti-glare layer,

wherein the light diffusion layer is provided between the transparent substrate and the polarizing plate.

* * * * *

专利名称(译)	液晶显示装置		
公开(公告)号	US20010008437A1	公开(公告)日	2001-07-19
申请号	US09/759334	申请日	2001-01-16
[标]申请(专利权)人(译)	藤森KOICHI 久保MASUMI NARUTAKI洋三		
申请(专利权)人(译)	藤森KOICHI 久保MASUMI NARUTAKI洋三		
当前申请(专利权)人(译)	夏普株式会社		
[标]发明人	FUJIMORI KOICHI KUBO MASUMI NARUTAKI YOZO		
发明人	FUJIMORI, KOICHI KUBO, MASUMI NARUTAKI, YOZO		
IPC分类号	G02F1/1333 G02F1/1335 G02F1/1343		
CPC分类号	G02F1/133371 G02F1/133504 G02F1/133555 G02F2001/133565		
优先权	2000008769 2000-01-18 JP 2000362208 2000-11-29 JP		
其他公开文献	US6894745		
外部链接	Espacenet USPTO		

摘要(译)

每个像素区域包括用于使用通过第一基板进入的光以及用于使用通过第二基板进入的光以反射模式显示的反射区域以透射模式显示的透射区域。第一基板包括透明电极区域和反射电极区域，两者都具有面向液晶层的平坦表面。第二基板包括反射区域中的透明电极和面向液晶层的表面上的透射区域，并且在反射区域中包括光漫射层，并且面向液晶层的表面在透射区域中是平坦的，并且反射区域。

