



US008253673B2

(12) **United States Patent**
Hsu et al.

(10) **Patent No.:** **US 8,253,673 B2**
(45) **Date of Patent:** **Aug. 28, 2012**

(54) **LIQUID CRYSTAL DISPLAY DEVICE
CAPABLE OF REDUCING IMAGE FLICKER
AND METHOD FOR DRIVING THE SAME**

(75) Inventors: **Chao-Ching Hsu**, Hsin-Chu (TW);
Mu-Lin Tung, Hsin-Chu (TW);
Jen-Chieh Chen, Hsin-Chu (TW)

(73) Assignee: **AU Optronics Corp.**, Science-Based
Industrial Park, Hsin-Chu (TW)

(*) Notice: Subject to any disclaimer, the term of this
patent is extended or adjusted under 35
U.S.C. 154(b) by 401 days.

(21) Appl. No.: **12/577,700**

(22) Filed: **Oct. 12, 2009**

(65) **Prior Publication Data**

US 2010/0245333 A1 Sep. 30, 2010

(30) **Foreign Application Priority Data**

Mar. 24, 2009 (TW) 98109623 A

(51) **Int. Cl.**
G09G 3/36 (2006.01)

(52) **U.S. Cl.** **345/92; 345/95**

(58) **Field of Classification Search** 345/87,
345/92, 95, 98, 100
See application file for complete search history.

(56) **References Cited**

U.S. PATENT DOCUMENTS

6,075,505 A	6/2000	Shiba	
6,583,777 B2 *	6/2003	Hebiguchi et al.	345/92
7,027,024 B2	4/2006	Yanagi	
2006/0077163 A1 *	4/2006	Yanagi et al.	345/94
2008/0225035 A1	9/2008	Hsu	
2009/0189883 A1 *	7/2009	Chung et al.	345/213
2010/0289785 A1 *	11/2010	Sawabe	345/208

FOREIGN PATENT DOCUMENTS

CN	1544975 A	11/2004
CN	101315749 A	12/2008
TW	I253051	4/2006

* cited by examiner

Primary Examiner — Chanh Nguyen

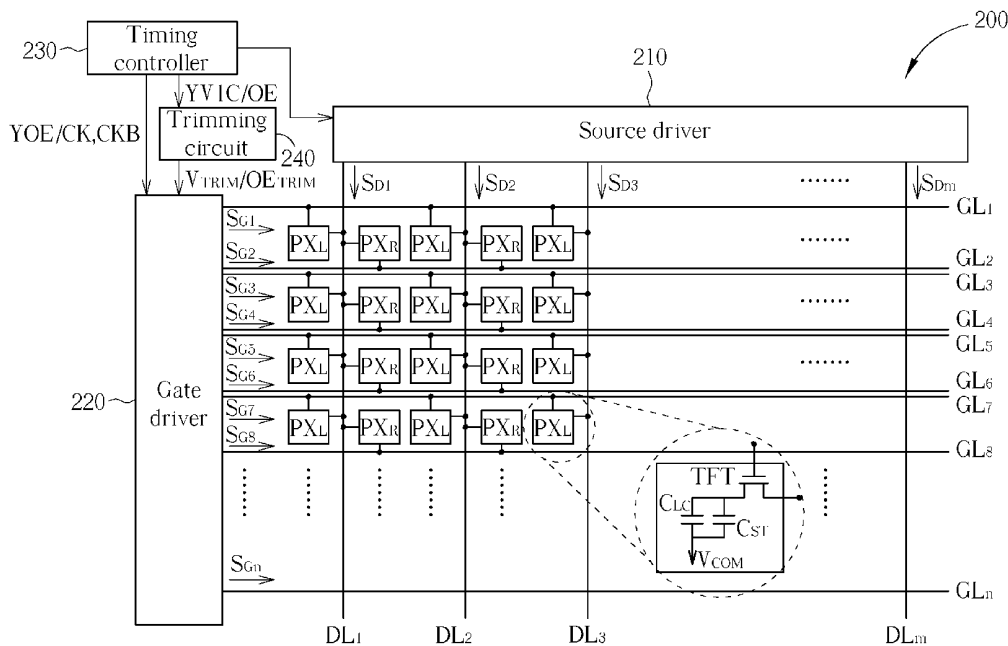
Assistant Examiner — Jonathan Blancha

(74) *Attorney, Agent, or Firm* — Winston Hsu; Scott Margo

(57) **ABSTRACT**

A method for driving a liquid crystal display adjusts the falling edges of the gate driving signals for reducing image flicker. A first gate driving signal falls from a high level to a first level at the signal falling edge. A second gate driving signal falls from the high level to a second level at the signal falling edge. When the parasitic capacitance of a first pixel is larger than that of a second pixel, the first level is lower than the second level; when the parasitic capacitance of the first pixel is substantially the same as that of the second pixel, the first level is the same as the second level; when the parasitic capacitance of the first pixel is smaller than that of the second pixel, the first level is higher than the second level.

20 Claims, 10 Drawing Sheets



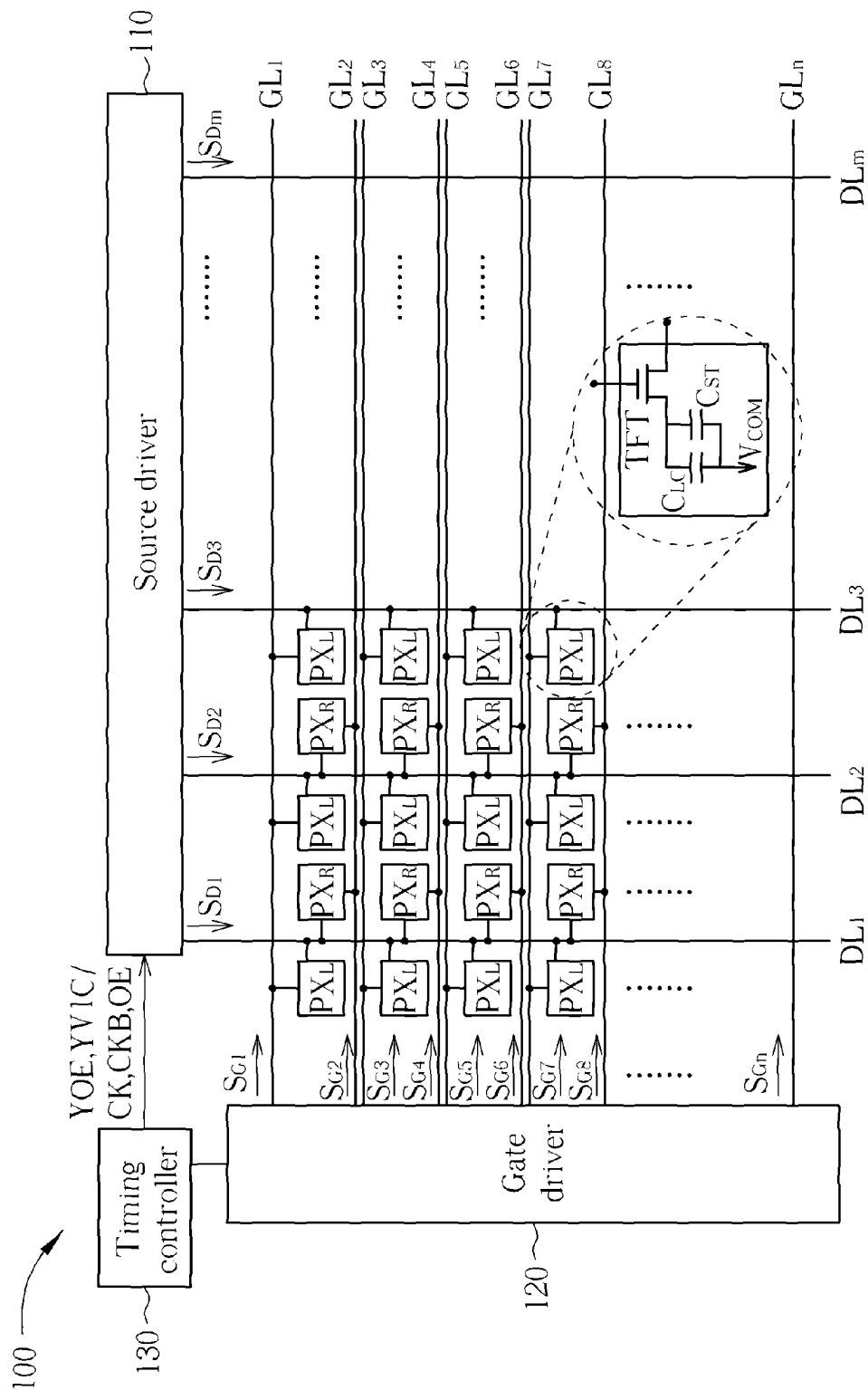


FIG. 1 PRIOR ART

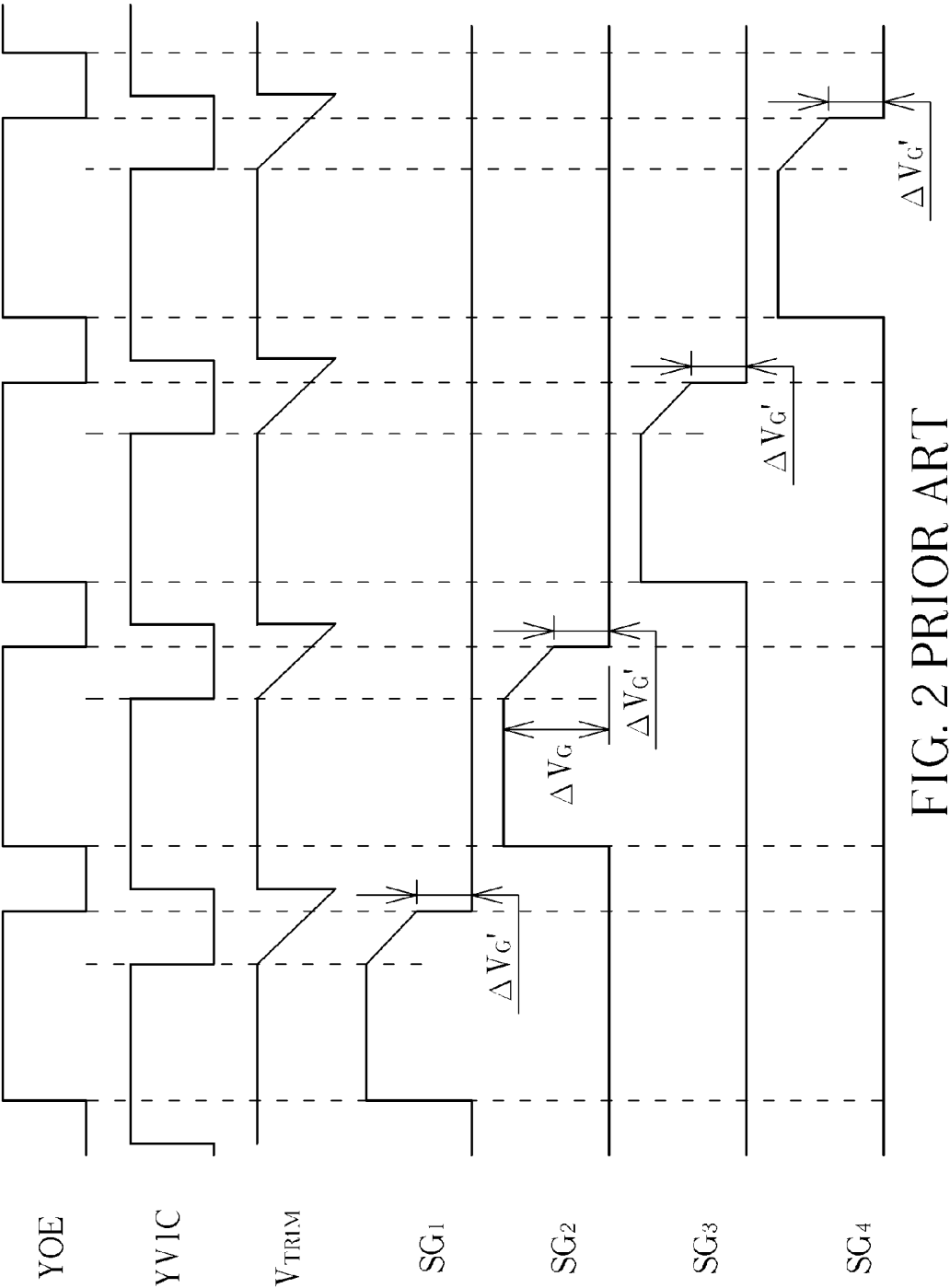


FIG. 2 PRIOR ART

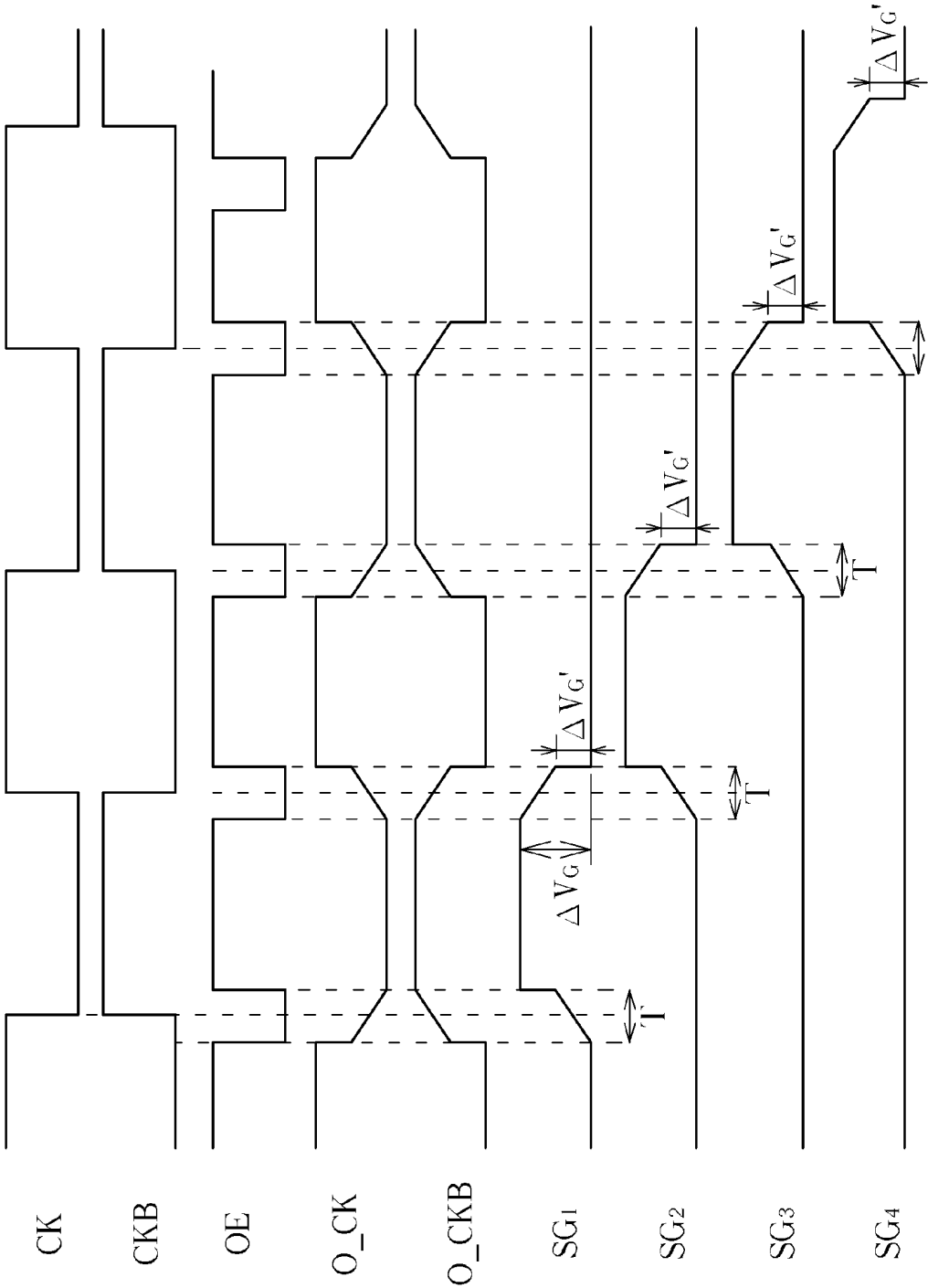


FIG. 3 PRIOR ART

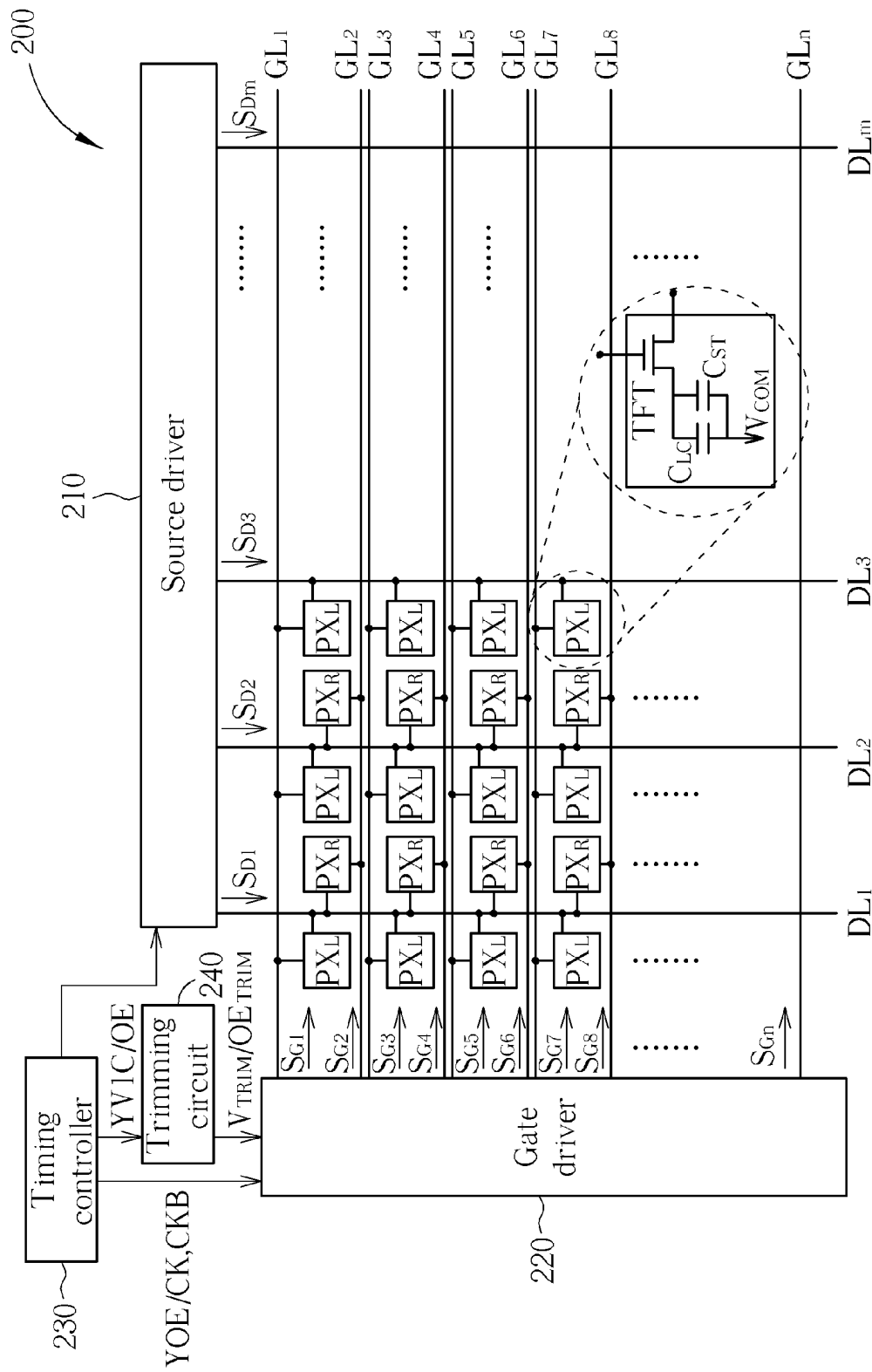


FIG. 4

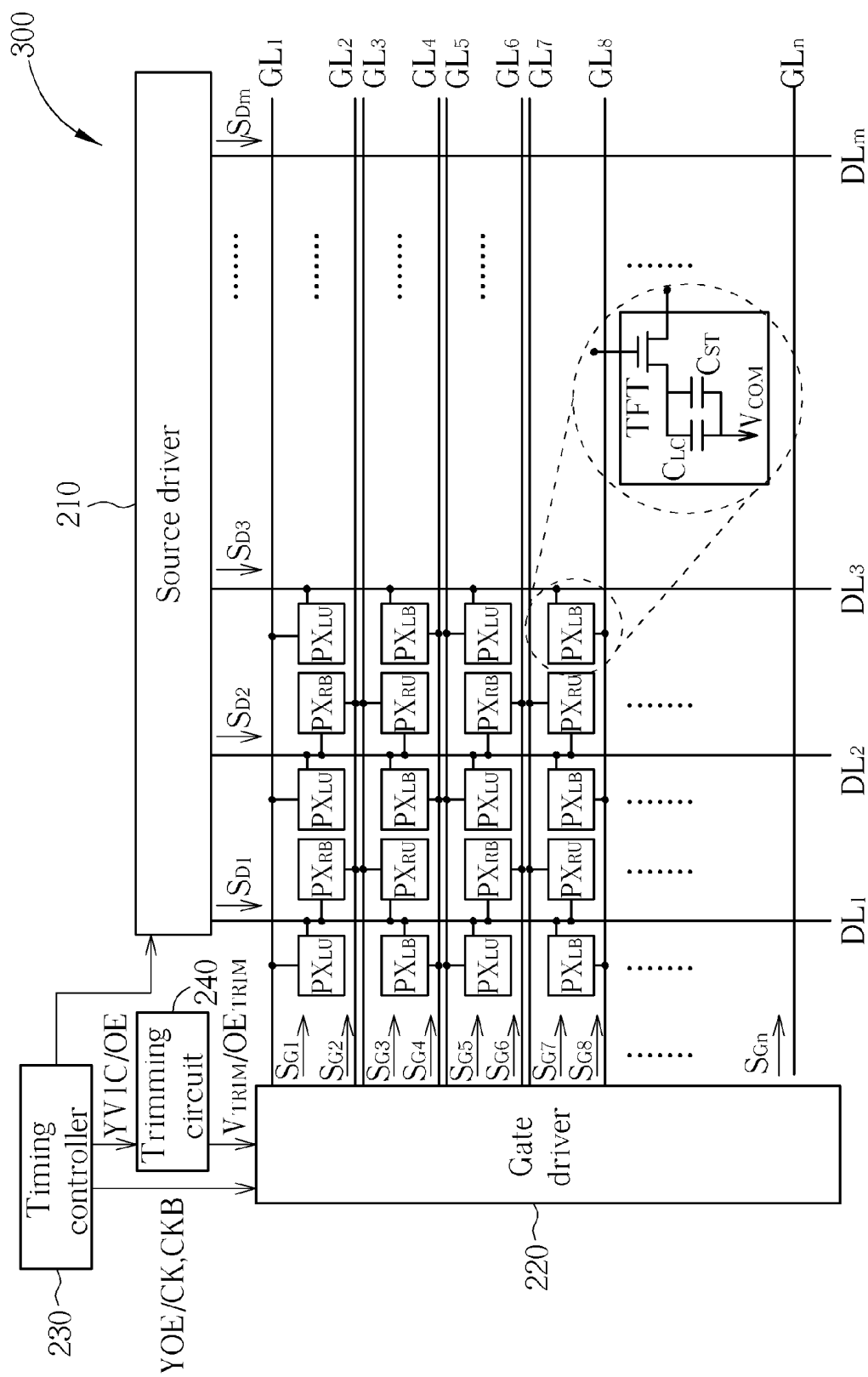


FIG. 5

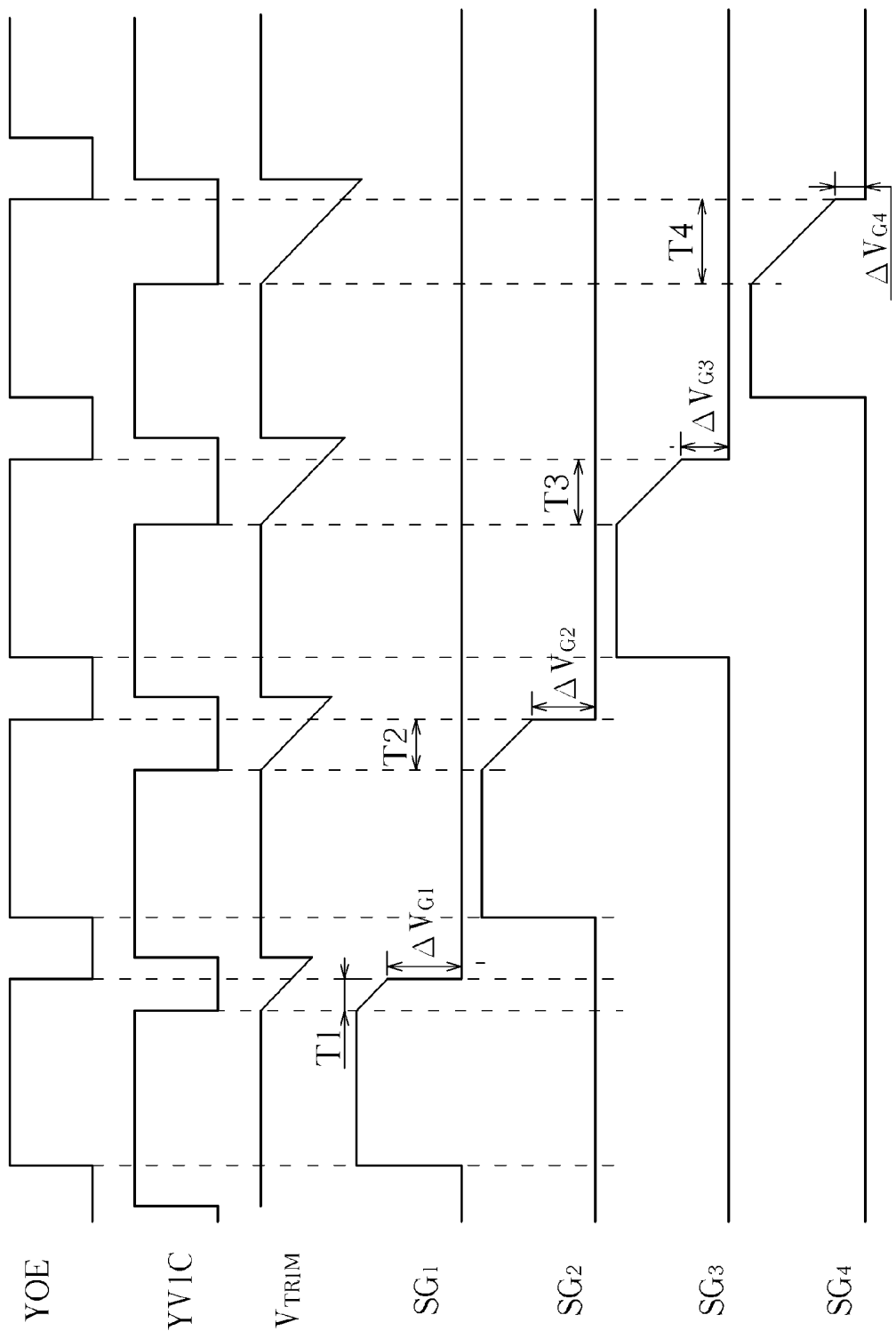


FIG. 6

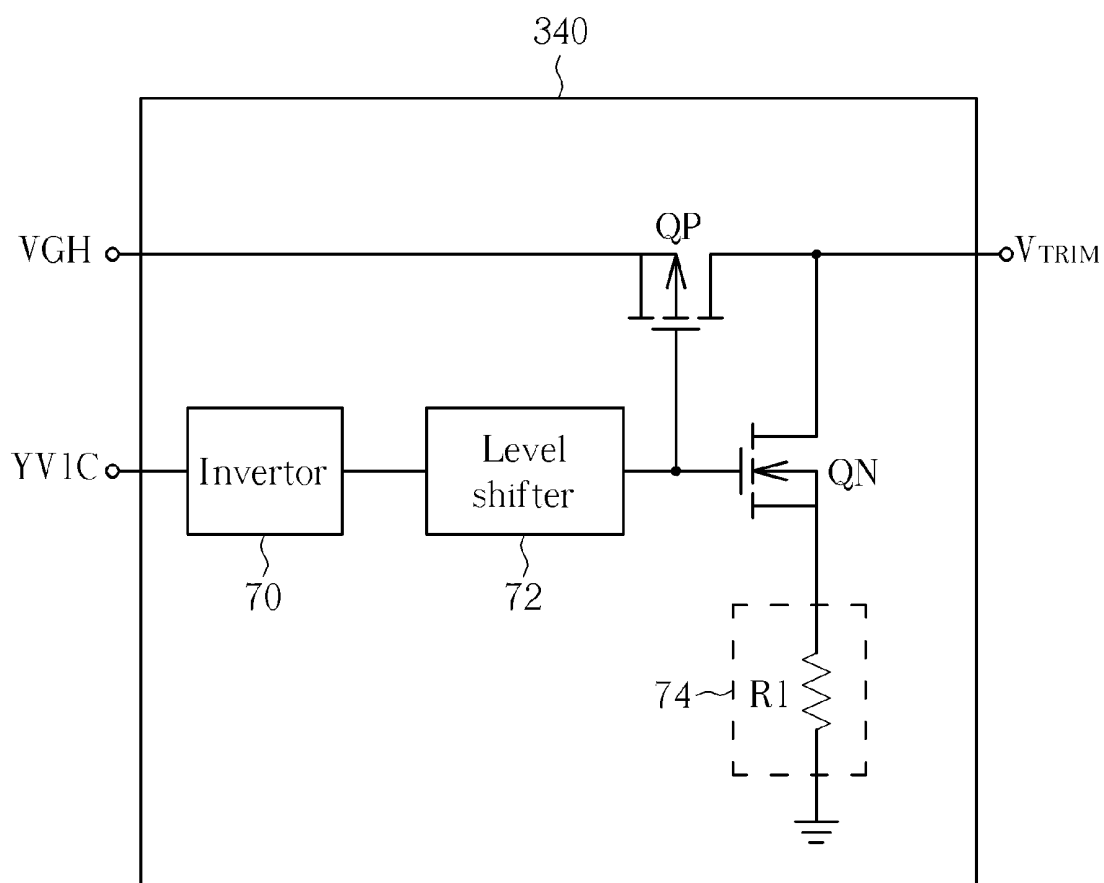


FIG. 7

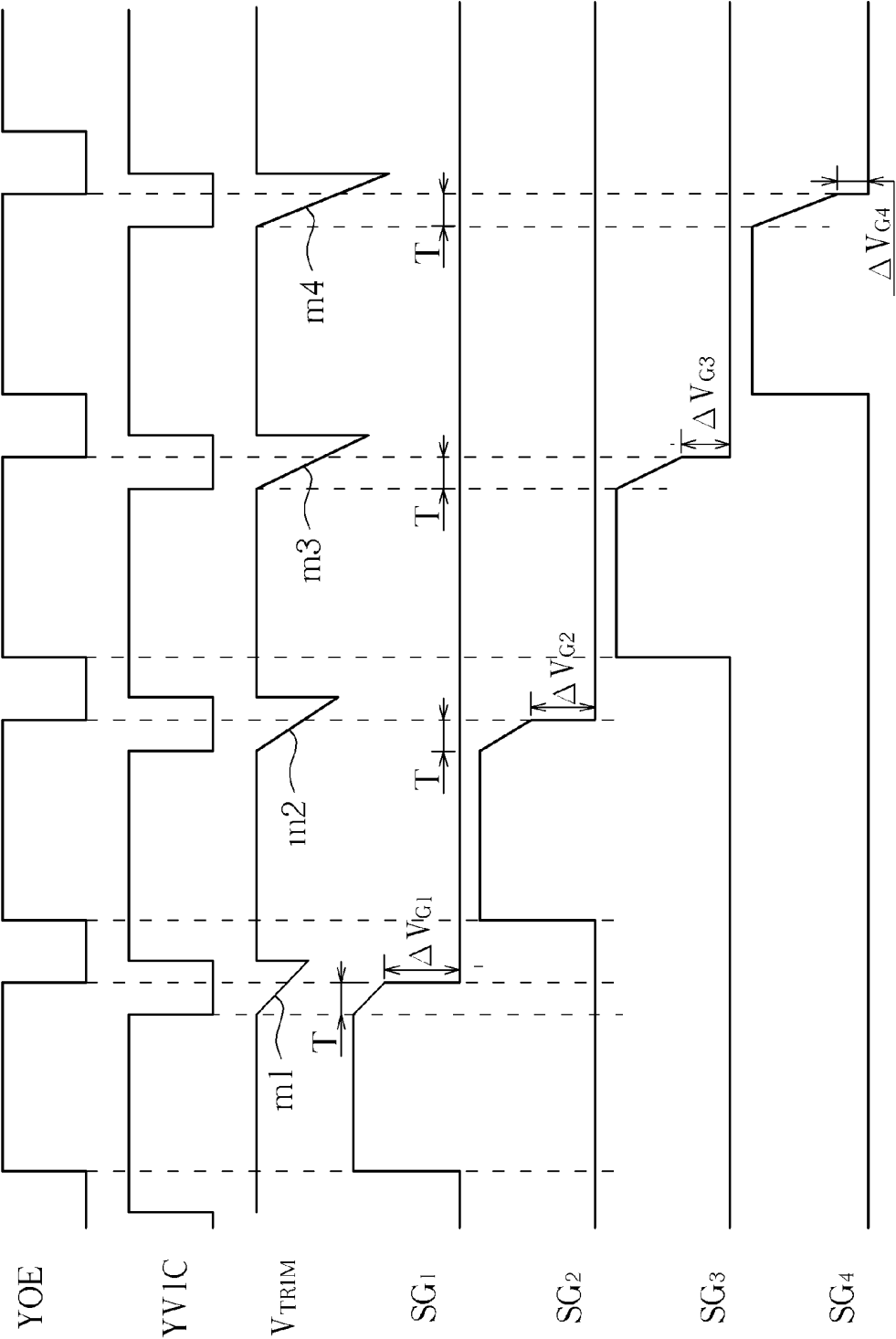


FIG. 8

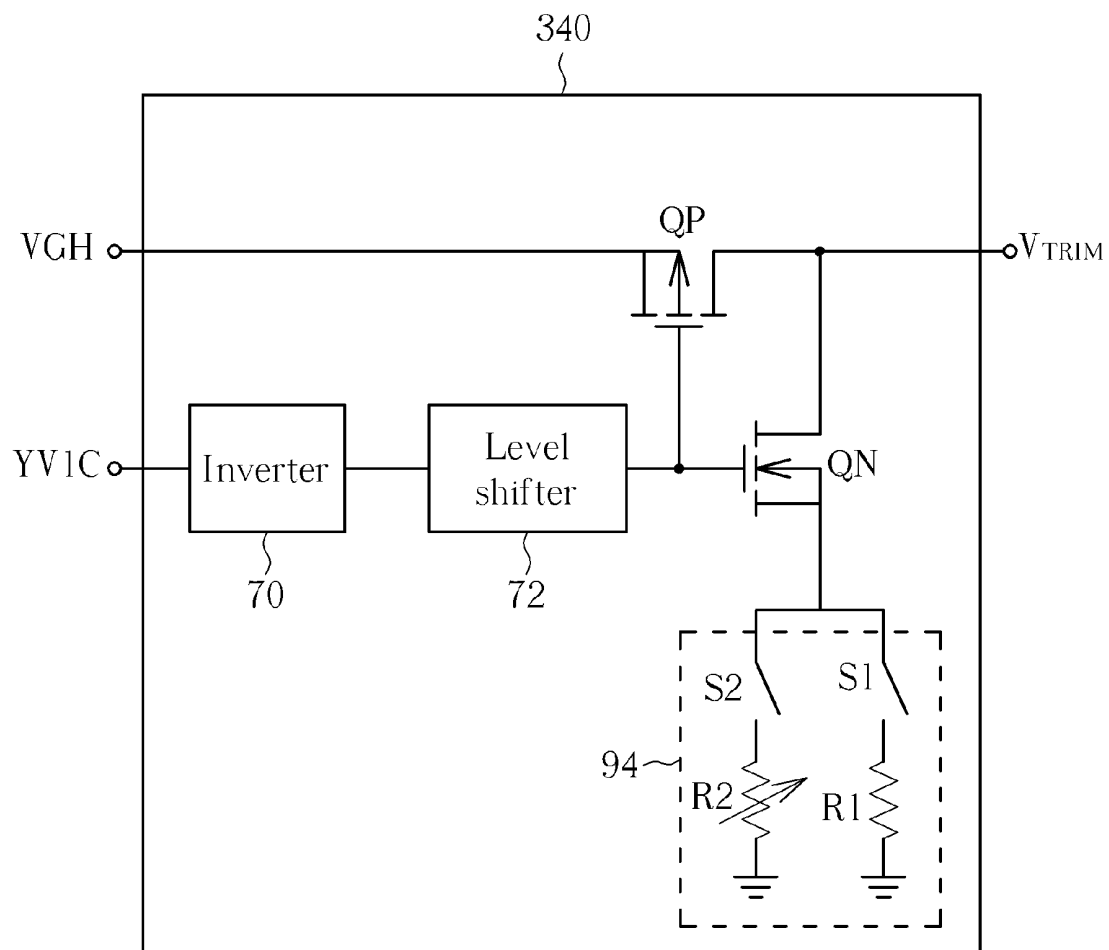


FIG. 9

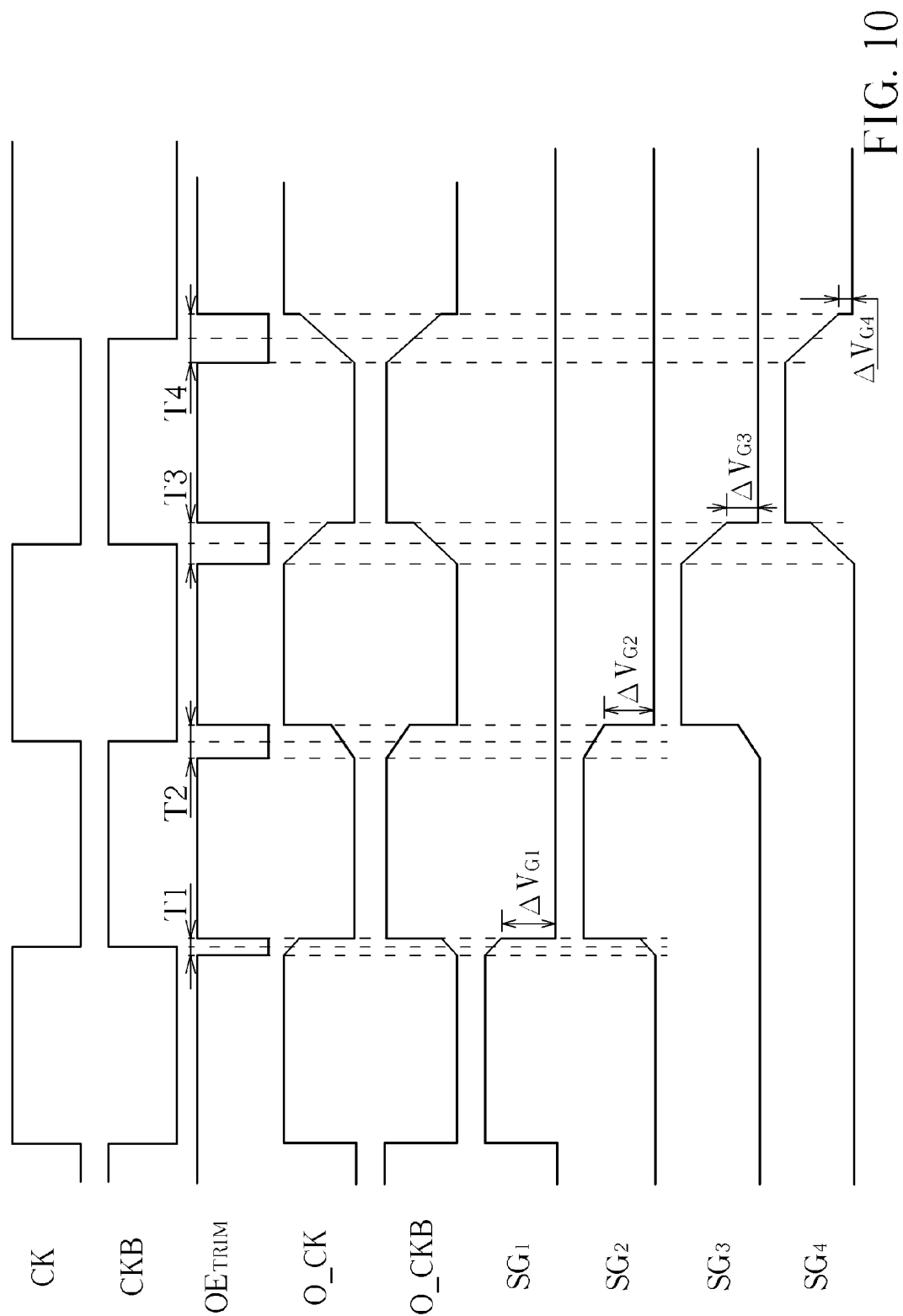


FIG. 10

LIQUID CRYSTAL DISPLAY DEVICE CAPABLE OF REDUCING IMAGE FLICKER AND METHOD FOR DRIVING THE SAME

BACKGROUND OF THE INVENTION

1. Field of the Invention

The present invention is related to a liquid crystal display device and method for driving the same, and more particularly, to a liquid crystal display device capable of reducing image flicker and method for driving the same.

2. Description of the Prior Art

Liquid crystals display (LCD) devices, characterized in low radiation, small size and low power consumption, have gradually replaced traditional cathode ray tube (CRT) devices and been widely used in electronic products, such as notebook computers, personal digital assistants (PDAs), flat panel TVs, or mobile phones. In traditional LCD devices, a source driver and a gate driver are used for driving the pixels of the panel in order to display images. Since the source driver is more expensive than the gate driver, LCD devices adopting half source driver (HSD) structure have been developed in order to reduce the number of source drivers. In other words, for the same amount of pixels, the manufacturing cost can be reduced by halving the number of data lines receiving signals from the source driver and doubling the number of gate lines receiving signals from the gate driver.

FIG. 1 is a prior art LCD device **100** which adopts HSD structure. The LCD device **100** includes a timing controller **130**, a source driver **110**, a gate driver **120**, a plurality of data lines DL_1 - DL_m , a plurality of gate lines GL_1 - GL_n , and a pixel matrix. The pixel matrix includes a plurality of pixel units PX_L and PX_R each having a thin film transistor (TFT) switch, a liquid crystal capacitor C_{LC} and a storage capacitor C_{ST} , and respectively coupled to a corresponding data line, a corresponding gate line and a common node. The timing controller **130** can generate control signals YOE and YVIC, input clock signals CK and CKB or an output enable signal OE for operating the source driver **110** and the gate driver **120**. The source driver **110** can generate data driving signals SD_1 - SD_m corresponding to display images. If the gate driver **120** is an external driving circuit, the gate driving signals SG_1 - SG_n for turning on the TFT switches are generated according to the control signals YOE and YVIC; if the gate driver **120** is fabricated using gate on array (GOA) technique, the gate driving signals SG_1 - SG_n are generated according to the input clock signals CK, CKB and the output enable signal OE.

When the TFT switch is turned off, the pixel electrode is not connected to any voltage source and thus has a floating level. Any voltage variation around the pixel electrode is coupled to the pixel electrode via its parasitic capacitance, which in turn influences the voltages applied to the liquid crystal capacitor C_{LC} and the storage capacitor C_{ST} . The feed-through voltage V_{FD} due to voltage variations caused by parasitic capacitance can be represented by the following equation:

$$V_{FD} = [C_{GD} / (C_{LC} + C_{ST} + C_{GD})] * \Delta V_G = K * \Delta V_G$$

C_{GD} represents the parasitic capacitance between the gate and the drain of the TFT switch. K represents the percentage of C_{GD} which contributes to the overall parasitic capacitance. ΔV_G represents the gate voltage difference caused by a gate driving signal when turning off a corresponding TFT switch. The parasitic capacitance is an inherent characteristic of the TFT switch. In order to effectively reduce image flicker, the

gate voltage difference ΔV_G needs to be lowered first before adjusting the common voltage Vcom for compensating the feed-through voltage V_{FD} .

FIGS. 2 and 3 are diagrams illustrating methods for driving the prior art LCD device **100**. FIG. 2 shows the waveforms of the control signal YOE and the gate driving signals SG_1 - SG_4 when the gate driver **120** is an external circuit. FIG. 3 shows the waveforms of the clock signals CK, CKB, O_CK, O_CKB, the output enable signal OE and the gate driving signals SG_1 - SG_4 when the gate driver **120** is fabricated using GOA technique.

In the driving method depicted in FIG. 2, the length of the enable period in the gate driving signals SG_1 - SG_4 is determined by the pulse width of the control signal YOE, and the length of the signal falling time in the gate driving signals SG_1 - SG_4 is determined by the signal falling start point of the control signals YOE and YVIC. In each period, the control signal YOE remains at high level for a constant length, and the waveform of the control signal YVIC starts to fall at the same point. Therefore, the gate driving signals SG_1 - SG_4 result in an identical gate voltage difference ΔV_G when turning off corresponding TFT switches. As previously stated, the feed-through voltage is proportional to the gate voltage difference. Since the gate voltage difference ΔV_G after voltage trimming is smaller than the gate voltage difference ΔV_G without voltage trimming, the effect of the feed-through voltage can be compensated.

In the driving method depicted in FIG. 3, the clock signals CK and CKB having opposite phases switch between high/low voltage levels based on a predetermined period which determines the length of the enable period in the gate driving signals SG_1 - SG_4 . When the output enable signal OE is at high level, the gate driver **120** outputs the clock signals CK and CKB for providing the corresponding clock signals O_CK and O_CKB. When the output enable signal OE is at low level, the gate driver **120** stops outputting the clock signals CK and CKB. Charge-sharing is then performed between the clock signals O_CK and O_CKB, thereby achieving voltage trimming at the signal falling edge. The gate driving signals SG_1 - SG_4 can thus be provided according to the clock signals O_CK and O_CKB after charge-sharing. In each period, the output enable signal OE remains at low level for a constant length T, the degree of voltage trimming in the gate driving signals SG_1 - SG_4 is identical. Therefore, the gate driving signals SG_1 - SG_4 result in an identical gate voltage difference ΔV_G when turning off corresponding TFT switches. As previously stated, the feed-through voltage is proportional to the gate voltage difference. Since the gate voltage difference ΔV_G after voltage trimming is smaller than the gate voltage difference ΔV_G without voltage trimming, the effect of the feed-through voltage can be compensated.

In the prior art LCD device **100**, the pixel units are disposed on both sides of each data line, wherein the pixel units PX_L disposed on the left side of the data lines are controlled by the gate driving signals $SG_1, SG_3, \dots, SG_{n-1}$ transmitted from the odd-numbered gate lines, while the pixel units PX_R disposed on the right side of the data lines are controlled by the gate driving signals SG_2, SG_4, \dots, SG_n transmitted from the even-numbered gate lines. Normally adopting different designs, these two types of pixel units PX_L and PX_R have different C_{LC} , C_{ST} , C_{GS} or C_{GD} , and the value of the feed-through voltage V_{FD} also varies. Even if the two types of pixel units PX_L and PX_R adopt the same design, the value of the feed-through voltage V_{FD} may also vary due to characteristic shift caused by manufacturing process deviations. For example, the process shift between the first metal layer M1

and the second metal layer M2 may result in different C_{GD} values of the pixel units PX_L and PX_R .

In the driving methods depicted in FIGS. 2 and 3, the gate voltage difference of each pixel is lowered by the same degree. Since each pixel has different feed-through voltage, image flicker can not be effectively reduced by adjusting the common voltage V_{com} .

SUMMARY OF THE INVENTION

The present invention provides an LCD device which improves image flicker, comprising a first gate line for transmitting a first gate driving signal; a second gate line adjacent and parallel to the first gate line for transmitting a second gate driving signal; a data line perpendicular to the first and second gate lines for transmitting data driving signals; a first pixel disposed at an intersection of the data line and the first gate line and on a first side of the data line, and for displaying images according to the first gate driving signal and a received data driving signal; a second pixel disposed at an intersection of the data line and the second gate line and on a second side of the data line, and for displaying images according to the second gate driving signal and a received data driving signal; a trimming circuit for generating a trimming signal according to the parasitic capacitances of the first and second pixels; and a gate driver for generating the first and second gate driving signals by adjusting a signal falling edge of a gate pulse signal according to the trimming signal, wherein a signal falling edge of the first gate driving signal falls from a high level to a first level, and a signal falling edge of the second gate driving signal falls from the high level to a second level.

The present invention also provides a method for driving an LCD device which comprises a data line, two adjacent first and second gate lines, a first pixel disposed at an intersection of the data line and the first gate line and on a first side of the data line, and a second pixel disposed at an intersection of the data line and the second gate line and on a second side of the data line. The method comprises providing a gate pulse signal; generating a first gate driving signal by adjusting the gate pulse signal according to a parasitic capacitance of the first pixel, wherein a signal falling edge of the first gate driving signal falls from a high level to a first level; generating a second gate driving signal by adjusting the gate pulse signal according to a parasitic capacitance of the second pixel, wherein a signal falling edge of the second gate driving signal falls from the high level to a second level; and outputting the first and second gate driving signals to the first and second gate lines for driving the first and second pixels, respectively.

These and other objectives of the present invention will no doubt become obvious to those of ordinary skill in the art after reading the following detailed description of the preferred embodiment that is illustrated in the various figures and drawings.

BRIEF DESCRIPTION OF THE DRAWINGS

FIG. 1 is a diagram of a prior art LCD device which adopts HSD structure.

FIGS. 2 and 3 are diagrams illustrating methods for driving the prior art LCD device.

FIGS. 4 and 5 are diagrams of LCD devices which adopt HSD structure according to the present invention.

FIG. 6 is a timing diagram illustrating a method for driving the LCD device according to a first embodiment of the present invention.

FIG. 7 is a diagram illustrating the trimming circuit capable of performing the driving method according to the first embodiment of the present invention.

FIG. 8 is a timing diagram illustrating a method for driving the LCD device according to a second embodiment of the present invention.

FIG. 9 is a diagram illustrating the trimming circuit capable of performing the driving method according to the second embodiment of the present invention.

FIG. 10 is a timing diagram illustrating a method for driving the LCD device according to a third embodiment of the present invention.

DETAILED DESCRIPTION

FIGS. 4 and 5 are diagrams of LCD devices 200 and 300 which adopt HSD structure according to the present invention. The LCD devices 200 and 300 each include a source driver 210, a gate driver 220, a timing controller 230, a trimming circuit 240, a plurality of data lines DL_1 - DL_m , a plurality of gate lines GL_1 - GL_n , and a pixel matrix. The pixel matrix of the LCD device 200 includes a plurality of pixel units PX_L and PX_R , and the pixel matrix of the LCD device 300 includes a plurality of pixel units PX_{LU} , PX_{LB} , PX_{RU} , and PX_{RB} . Each of the pixel units includes a TFT switch, a liquid crystal capacitor C_{LC} and a storage capacitor C_{ST} respectively coupled to a corresponding data line, a corresponding gate line and a common node. The timing controller 230 can generate control signals YOE and YVIC, clock signals CK and CKB or an output enable signal OE for operating the source driver 210 and the gate driver 220. The source driver 210 can generate data driving signals SD_1 - SD_m corresponding to display images. If the gate driver 220 is an external driving circuit, the trimming circuit 240 generates a trimming signal V_{TRIM} according to the control signal YVIC and the parasitic capacitance of the pixel units, and the gate driver 220 then generates the gate driving signals SG_1 - SG_n for turning on the TFT switches according to the control signal YOE and the trimming signal V_{TRIM} ; if the gate driver 220 is fabricated using GOA technique, the trimming circuit 240 generates a trimming signal V_{TRIM} according to the output enable signal OE and the parasitic capacitance of the pixel units, and the gate driver 220 then generates the gate driving signals SG_1 - SG_n for turning on the TFT switches according to the clock signals CK, CKB and the trimming signal V_{TRIM} .

In the LCD device 200 according to the present invention, the pixel units are disposed on both sides of each data line, wherein the first type of pixel units PX_L disposed on the left side of the data lines are controlled by the gate driving signals $SG_1, SG_3, \dots, SG_{n-1}$ transmitted from the odd-numbered gate lines, while the second type of pixel units PX_R disposed on the right side of the data lines are controlled by the gate driving signals SG_2, SG_4, \dots, SG_n transmitted from the even-numbered gate lines. Normally adopting different designs, these two types of pixel units PX_L and PX_R have different C_{LC} , C_{ST} , C_{GS} or C_{GD} and the value of the feed-through voltage V_{FD} also varies. Even if the two types of pixel units PX_L and PX_R adopt the same design, the value of the feed-through voltage V_{FD} may also vary due to characteristic shift caused by manufacturing process deviations.

In the LCD device 300 according to the present invention, the pixel units are disposed on both sides of each data line, wherein the first type of pixel units PX_{LU} disposed on the left side of the data lines are controlled by the gate driving signals $SG_1, SG_3, \dots, SG_{n-1}$ transmitted from the gate lines $GL_1, GL_3, \dots, GL_{n-1}$, the second type of pixel units PX_{RB} disposed on the right side of the data lines are controlled by the gate

driving signals $SG_2, SG_6, \dots, SG_{n-2}$ transmitted from the gate lines $GL_2, GL_6, \dots, GL_{n-2}$, the third type of pixel units PX_{RU} disposed on the right side of the data lines are controlled by the gate driving signals $SG_3, SG_7, \dots, SG_{n-1}$ transmitted from the gate lines $GL_3, GL_7, \dots, GL_{n-1}$, the fourth type of pixel units PX_{LB} disposed on left side of the data lines are controlled by the gate driving signals SG_4, SG_8, \dots, SG_n transmitted from the gate lines GL_4, GL_8, \dots, GL_n (assuming n is a multiple of 4). Normally adopting different designs, these four types of pixel units $PX_{LU}, PX_{LB}, PX_{RU}$ and PX_{RB} have different C_{LC}, C_{ST}, C_{GS} or C_{GD} and the value of the feed-through voltage V_{FD} also varies. Even if the four types of pixel units $PX_{LU}, PX_{LB}, PX_{RU}$ and PX_{RB} adopt the same design, the value of the feed-through voltage V_{FD} may also vary due to characteristic shift caused by manufacturing process deviations.

In the present invention, the gate driving signals SG_1-SG_n with trimmed signal falling edges are used for reducing the gate voltage differences. Meanwhile, the degree of voltage trimming is adjusted according to the parasitic capacitance of the pixel units, so that the gate driving signals SG_1-SG_n result in various gate voltage differences $\Delta V_{G1}-\Delta V_{Gn}$ when turning off corresponding TFT switches. In the LCD device **300** for instance, the gate driving signals SG_1-SG_4 with different trimmed signal falling edges are used for driving the four types of pixel units, thereby resulting in various gate voltage differences $\Delta V_{G1}-\Delta V_{G4}$ when turning off corresponding TFT switches. The capacitance percentages K_1-K_4 of the four types of the pixel units which influence the feed-through voltage differently can thus be compensated. Since the feed-through voltages $V_{FD1}-V_{FD4}$ of the four types of the pixel units are substantially the same after voltage trimming, image flicker can be effectively reduced.

FIG. 6 is a timing diagram illustrating a method for driving the LCD device **200** or **300** when the gate driver **310** is an external driving circuit according to a first embodiment of the present invention. FIG. 6 shows the waveforms of the control signal YOE and YVIC, the trimming signal V_{TRIM} and the gate driving signals SG_1-SG_4 . In the driving method depicted in FIG. 6, the control signal YOE remains at high level for a constant length in each period, and the length of the enable period in the gate driving signals SG_1-SG_4 is determined by the pulse width of the control signal YOE. The signal falling edge start points in each period of the control signal YVIC vary according to the parasitic capacitances of the pixel units. The total lengths of the signal falling time $T1-T4$ of the gate driving signals SG_1-SG_4 are determined by the signal falling start points of the control signals YOE and YVIC in corresponding periods. The trimming circuit **340** first generates the trimming signal V_{TRIM} having distinct signal falling edge start points in corresponding periods according to the control signal YVIC and the capacitance percentages K_1-K_4 . The gate driver **320** then generates the gate driving signals SG_1-SG_4 having distinct trimmed signal falling edges in corresponding periods according to the control signal YOE and the trimming signal V_{TRIM} . The gate driving signals SG_1-SG_4 result in different gate voltage differences $\Delta V_{G1}-\Delta V_{G4}$ when the control signal YOE switches from high level to low level. Assuming the relationship of the capacitance percentages is $K_1 < K_2 < K_3 < K_4$, then the relationship of the total lengths of the signal falling time is $T1 < T2 < T3 < T4$, and the relationship of the gate voltage differences is thus $\Delta V_{G1} > \Delta V_{G2} > \Delta V_{G3} > \Delta V_{G4}$. As previously stated, the feed-through voltage is proportional to the multiple of the capacitance percentage and the gate voltage difference. When $K_1 < K_2 < K_3 < K_4$, the first embodiment of the present invention provides the gate driving signals SG_1-SG_4 which result in

gate voltage differences having the relationship of $\Delta V_{G1} > \Delta V_{G2} > \Delta V_{G3} > \Delta V_{G4}$. Since the feed-through voltages of each type of pixel units are substantially the same after voltage trimming, image flicker can be effectively reduced by adjusting the common voltage Vcom.

FIG. 7 is a diagram illustrating the trimming circuit **340** capable of performing the driving method according to the first embodiment of the present invention. The trimming circuit **340** in FIG. 7, including an inverter **70**, a level shifter **72**, a slope-adjusting circuit **74**, and transistor switches QP and QN, can generate the trimming signal V_{TRIM} according to the control signal YVIC. When the control signal YVIC is at high level, the transistor switch QP is turned on and the transistor switch QN is turned off, and the trimming signal V_{TRIM} is at a high level VGH. When the control signal YVIC is at low level, the transistor switch QP is turned off and the transistor switch QN is turned on, and the level of the trimming signal V_{TRIM} is pulled down to low level via the resistor R1 of the slope-adjusting circuit **74**. Therefore in the embodiments of FIGS. 6 and 7, the trimming circuit **340** receives the control signal YVIC having distinct signal falling edge start points, and then provides the trimming signal V_{TRIM} having a slope at the signal falling edge. The slope-adjusting circuit **74** can be an impedance device, such as a resistor or a variable resistor.

FIG. 8 is a timing diagram illustrating a method for driving the LCD device **200** or **300** when the gate driver **310** is an external driving circuit according to a second embodiment of the present invention. FIG. 8 shows the waveforms of the control signal YOE and YVIC, the trimming signal V_{TRIM} and the gate driving signals SG_1-SG_4 . In the driving method depicted in FIG. 8, the control signal YOE remains at high level for a constant length in each period, and the length of the enable period in the gate driving signals SG_1-SG_4 is determined by the pulse width of the control signal YOE. The signal falling edge start points in each period of the control signal YVIC vary according to the parasitic capacitances of the pixel units. The waveform of the control signal YVIC starts to fall at the same point in each period, thereby resulting in an identical total length of the signal falling time T in the gate driving signals SG_1-SG_4 . The slopes m_1-m_4 of the signal falling edges in the gate driving signals SG_1-SG_4 are determined by the trimming circuit **340**. The trimming circuit **340** first generates the trimming signal V_{TRIM} having distinct signal falling edge slopes in corresponding periods according to the control signal YVIC and the capacitance percentages K_1-K_4 . The gate driver **320** then generates the gate driving signals SG_1-SG_4 having distinct trimmed signal falling edges in corresponding periods according to the control signal YOE and the trimming signal V_{TRIM} . The gate driving signals SG_1-SG_4 result in different gate voltage differences $\Delta V_{G1}-\Delta V_{G4}$ when the control signal YOE switches from high level to low level. Assuming the relationship of the capacitance percentages is $K_1 < K_2 < K_3 < K_4$, then the relationship of the signal falling edge slopes is $m_1 < m_2 < m_3 < m_4$, and the relationship of the gate voltage differences is thus $\Delta V_{G1} > \Delta V_{G2} > \Delta V_{G3} > \Delta V_{G4}$. As previously stated, the feed-through voltage is proportional to the multiple of the capacitance percentage and the gate voltage difference. When $K_1 < K_2 < K_3 < K_4$, the second embodiment of the present invention provides the gate driving signals SG_1-SG_4 which result in gate voltage differences having the relationship of $\Delta V_{G1} > \Delta V_{G2} > \Delta V_{G3} > \Delta V_{G4}$. Since the feed-through voltages of each type of pixel units are substantially the same after voltage trimming, image flicker can be effectively reduced by adjusting the common voltage Vcom.

FIG. 9 is a diagram illustrating the trimming circuit **340** capable of performing the driving method according to the

second embodiment of the present invention. The trimming circuit 340 in FIG. 9, including an inverter 70, a level shifter 72, a slope-adjusting circuit 94, and transistor switches QP and QN, can generate the trimming signal V_{TRIM} according to the control signal YV1C. When the control signal YV1C is at high level, the transistor switch QP is turned on and the transistor switch QN is turned off, and the trimming signal V_{TRIM} is at a high level VGH. When the control signal YV1C is at low level, the transistor switch QP is turned off and the transistor switch QN is turned on, and the level of the trimming signal V_{TRIM} is pulled down to low level via the resistor R1 of the slope-adjusting circuit 94. The slope-adjusting circuit 94, including a resistor R1, a variable resistor R2, and switches S1 and S2, can provide different equivalent resistances according to the capacitance percentages $K_1 \cdot K_4$ and can pull down the level of the trimming signal V_{TRIM} using an adequate slope. Therefore in the embodiments of FIGS. 8 and 9, the trimming circuit 340 receives the control signal YV1C having identical signal falling edge start points, and then provides the trimming signal V_{TRIM} having distinct slopes at the signal falling edge using the slope-adjusting circuit 94.

FIG. 10 is a timing diagram illustrating a method for driving the LCD device 200 or 300 when the gate driver 310 is fabricated using GOA technique according to a third embodiment of the present invention. FIG. 10 shows the waveforms of the clock signals CK, CKB, O_CK and O_CKB, the output enable signal OE and the gate driving signals SG₁-SG₄. In the driving method depicted in FIG. 8, the clock signals CK and CKB having opposite phases switch between high/low voltage levels based on a predetermined period which determines the length of the enable period in the gate driving signals SG₁-SG₄. The trimming circuit 340 first generates a trimming signal OE_{TRIM} having distinct disable lengths (low level) T1-T4 in corresponding periods according to the enable signal OE and the capacitance percentages K_1 - K_4 . The gate driver 320 then outputs the clock signals CK and CKB for providing the clock signals O_CK and O_CKB. When the trimming signal OE_{TRIM} is at high level, the gate driver 220 outputs the clock signals CK and CKB for providing the corresponding clock signals O_CK and O_CKB. When the trimming signal OE_{TRIM} is at low level, the gate driver 220 stops outputting the clock signals CK and CKB. Charge-sharing is then performed between the clock signals O_CK and O_CKB, thereby achieving voltage trimming at the signal falling edge. The gate driver 320 then generates the gate driving signals SG₁-SG₄ having distinct trimmed signal falling edges in corresponding periods according to the clock signals OCK and O_CKB.

The gate driving signals SG₁-SG₄ result in different gate voltage differences ΔV_{G1} - ΔV_{G4} when the corresponding clock signals O_CK and O_CKB switch from high level to low level. Assuming the relationship of the capacitance percentages is $K_1 < K_2 < K_3 < K_4$, then the relationship of the disable lengths is T1 < T2 < T3 < T4, and the relationship of the gate voltage differences is thus $\Delta V_{G1} > \Delta V_{G2} > \Delta V_{G3} > \Delta V_{G4}$. As previously stated, the feed-through voltage is proportional to the multiple of the capacitance percentage and the gate voltage difference. When $K_1 < K_2 < K_3 < K_4$, the third embodiment of the present invention provides the gate driving signals SG₁-SG₄ which result in gate voltage differences having the relationship of $\Delta V_{G1} > \Delta V_{G2} > \Delta V_{G3} > \Delta V_{G4}$. Since the feed-through voltages of each type of pixel units are substantially the same after voltage trimming, image flicker can be effectively reduced by adjusting the common voltage Vcom.

The present invention can adjust the total length or the slope of the signal falling edge in the gate driving signals SG₁-SG₄ according to the capacitance percentages K_1 - K_4 of

the pixel units. Different parasitic capacitances can be compensated by various voltage differences ΔV_{G1} - ΔV_{Gn} so that the feed-through voltages of each type of pixel units are substantially the same. The present invention can effectively reduce image flicker by adjusting the common voltage Vcom, and thus provide better display quality.

Those skilled in the art will readily observe that numerous modifications and alterations of the device and method may be made while retaining the teachings of the invention.

What is claimed is:

1. A liquid crystal display (LCD) device which improves image flicker, comprising:

- a first gate line for transmitting a first gate driving signal;
- a second gate line adjacent and parallel to the first gate line for transmitting a second gate driving signal;
- a data line perpendicular to the first and second gate lines for transmitting data driving signals;
- a first pixel disposed at an intersection of the data line and the first gate line and on a first side of the data line for displaying images according to the first gate driving signal and a received data driving signal;
- a second pixel disposed at an intersection of the data line and the second gate line and on a second side of the data line for displaying images according to the second gate driving signal and a received data driving signal;
- a trimming circuit for generating a trimming signal according to parasitic capacitances of the first and second pixels; and
- a gate driver for generating the first and second gate driving signals by adjusting a signal falling edge of a gate pulse signal according to the trimming signal, wherein:
 - a signal falling edge of the first gate driving signal falls from a high level to a first level;
 - a signal falling edge of the second gate driving signal falls from the high level to a second level;
 - the first level is lower than the second level when the parasitic capacitance of the first pixel is larger than the parasitic capacitance of the second pixel;
 - the first and second levels are substantially the same when the parasitic capacitances of the first and second pixels are substantially the same; and
 - the first level is higher than the second level when the parasitic capacitance of the first pixel is smaller than the parasitic capacitance of the second pixel.

2. The LCD device of claim 1, wherein:

the first pixel comprises:

- a first switch including:
 - a first end coupled to the data line;
 - a second end; and
 - a control end coupled to the first gate line;
- a first liquid crystal capacitor coupled between the second end of the first switch and a common node; and
- a first storage capacitor coupled in parallel with the first liquid crystal capacitor; and

the second pixel comprises:

- a second switch including:
 - a first end coupled to the data line;
 - a second end; and
 - a control end coupled to the second gate line;
- a second liquid crystal capacitor coupled between the second end of the second switch and the common node; and
- a second storage capacitor coupled in parallel with the second liquid crystal capacitor.

3. The LCD device of claim 2, wherein the first and second switches include thin film transistors, and the parasitic

capacitances of the first and second pixels are gate-to-drain capacitances of the thin film transistors.

4. The LCD device of claim 1 further comprising:

a third gate line adjacent and parallel to the second gate line for transmitting a third gate driving signal;

a fourth gate line adjacent and parallel to the third gate line for transmitting a fourth gate driving signal;

a third pixel disposed at an intersection of the data line and the third gate line and on the first side of the data line for displaying images according to the third gate driving signal and a received data driving signal; and

a fourth pixel disposed at an intersection of the data line and the fourth gate line and on the second side of the data line for displaying images according to the fourth gate driving signal and a received data driving signal;

wherein the trimming circuit further generates the trimming signal according to parasitic capacitances of the third and fourth pixels, and the gate driver further generates the third and fourth gate driving signals by adjusting the signal falling edge of the gate pulse signal according to the trimming signal, wherein:

a signal falling edge of the third gate driving signal falls from the high level to a third level;

a signal falling edge of the fourth gate driving signal falls from the high level to a fourth level;

the third level is lower than the fourth level when the parasitic capacitance of the third pixel is larger than the parasitic capacitance of the fourth pixel;

the third and fourth levels are substantially the same when the parasitic capacitances of the third and fourth pixels are substantially the same; and

the third level is higher than the fourth level when the parasitic capacitance of the third pixel is smaller than the parasitic capacitance of the fourth pixel.

5. The LCD device of claim 4, wherein:

the third pixel comprises:

a third switch including:

a first end coupled to the data line;

a second end; and

a control end coupled to the third gate line;

a third liquid crystal capacitor coupled between the second end of the third switch and a common node; and

a third storage capacitor coupled in parallel with the third liquid crystal capacitor; and

the fourth pixel comprises:

a fourth switch including:

a first end coupled to the data line;

a second end; and

a control end coupled to the fourth gate line;

a fourth liquid crystal capacitor coupled between the second end of the fourth switch and the common node; and

a fourth storage capacitor coupled in parallel with the fourth liquid crystal capacitor.

6. The LCD device of claim 5, wherein the third and fourth switches include thin film transistors, and the parasitic capacitances of the third and fourth pixels are gate-to-drain capacitances of the thin film transistors.

7. The LCD device of claim 1, further comprising:

a third gate line adjacent and parallel to the second gate line for transmitting a third gate driving signal;

a fourth gate line adjacent and parallel to the third gate line for transmitting a fourth gate driving signal;

a third pixel disposed at an intersection of the data line and the third gate line and on the second side of the data line for displaying images according to the third gate driving signal and a received data driving signal; and

a fourth pixel disposed at an intersection of the data line and the fourth gate line and on the first side of the data line for displaying images according to the fourth gate driving signal and a received data driving signal;

wherein the trimming circuit further generates the trimming signal according to parasitic capacitances of the third and fourth pixels, and the gate driver further generates the third and fourth gate driving signals by adjusting the signal falling edge of the gate pulse signal according to the trimming signal, wherein:

a signal falling edge of the third gate driving signal falls from the high level to a third level, and

a signal falling edge of the fourth gate driving signal falls from the high level to a fourth level;

the third level is lower than the fourth level when the parasitic capacitance of the third pixel is larger than the parasitic capacitance of the fourth pixel;

the third and fourth levels are substantially the same when the parasitic capacitances of the third and fourth pixels are substantially the same; and

the third level is higher than the fourth level when the parasitic capacitance of the third pixel is smaller than the parasitic capacitance of the fourth pixel.

8. The LCD device of claim 7, wherein:

the third pixel comprises:

a third switch including:

a first end coupled to the data line;

a second end; and

a control end coupled to the third gate line;

a third liquid crystal capacitor coupled between the second end of the third switch and a common node; and

a third storage capacitor coupled in parallel with the third liquid crystal capacitor; and

the fourth pixel comprises:

a fourth switch including:

a first end coupled to the data line;

a second end; and

a control end coupled to the fourth gate line;

a fourth liquid crystal capacitor coupled between the second end of the fourth switch and the common node; and

a fourth storage capacitor coupled in parallel with the fourth liquid crystal capacitor.

9. The LCD device of claim 8, wherein the third and fourth switches include thin film transistors, and the parasitic capacitances of the third and fourth pixels are gate-to-drain capacitances of the thin film transistors.

10. The LCD device of claim 1, wherein the trimming circuit comprises:

a switch for controlling a signal falling edge start point of the trimming signal in each period.

11. The LCD device of claim 1, wherein the trimming circuit comprises:

a resistor for controlling a signal falling slope of the trimming signal in each period.

12. A method for driving an LCD device which comprises a data line, two adjacent first and second gate lines, a first pixel disposed at an intersection of the data line and the first gate line and on a first side of the data line, and a second pixel disposed at an intersection of the data line and the second gate line and on a second side of the data line, the method comprising:

providing a gate pulse signal;

generating a first gate driving signal by adjusting the gate pulse signal according to a parasitic capacitance of the first pixel, wherein a signal falling edge of the first gate driving signal falls from a high level to a first level;

11

generating a second gate driving signal by adjusting the gate pulse signal according to a parasitic capacitance of the second pixel, wherein a signal falling edge of the second gate driving signal falls from the high level to a second level; and

outputting the first and second gate driving signals to the first and second gate lines for driving the first and second pixels, respectively, wherein:

the first level is lower than the second level when the parasitic capacitance of the first pixel is larger than the parasitic capacitance of the second pixel;

the first and second levels are substantially the same when the parasitic capacitances of the first and second pixels are substantially the same; and

the first level is higher than the second level when the parasitic capacitance of the first pixel is smaller than the parasitic capacitance of the second pixel.

13. The method of claim **12** wherein:

generating the first gate driving signal includes lowering the first gate driving signal from the high level for a first time length so as to reach the first level; and

generating the second gate driving signal includes lowering the second gate driving signal from the high level for a second time length so as to reach the second level.

14. The method of claim **13** wherein:

the first time length is longer than the second time length when the parasitic capacitance of the first pixel is larger than the parasitic capacitance of the second pixel;

the first and second time lengths are substantially the same when the parasitic capacitances of the first and second pixels are substantially the same; and

the first time length is shorter than the second time length when the parasitic capacitance of the first pixel is smaller than the parasitic capacitance of the second pixel.

15. The method of claim **12** wherein:

generating the first gate driving signal includes lowering the first gate driving signal from the high level with a first slope so as to reach the first level; and

12

generating the second gate driving signal includes lowering the second gate driving signal from the high level with a second slope so as to reach the second level.

16. The method of claim **15** wherein the first slope is larger than the second slope when the parasitic capacitance of the first pixel is larger than the parasitic capacitance of the second pixel.

17. The method of claim **15** wherein the first and second slopes are substantially the same when the parasitic capacitances of the first and second pixels are substantially the same.

18. The method of claim **12** further comprising:

providing a first clock signal and a second clock signal, wherein the first and second clock signals switch phases based on a predetermined period, and the first and second clock signals have opposite phases at the same time; determining a first time length according to the parasitic capacitance of the first pixel;

determining a second time length according to the parasitic capacitance of the second pixel;

performing charge-sharing on the first and second clock signals for the first time length during periods corresponding to the first pixels;

performing charge-sharing on the second and second clock signals for the second time length during periods corresponding to the second pixels; and

generating the first or the second gate driving signal by adjusting the gate pulse signal according to the first and second clock signals after performing charge-sharing.

19. The method of claim **18** wherein the first time length is longer than the second time length when the parasitic capacitance of the first pixel is larger than the parasitic capacitance of the second pixel.

20. The method of claim **18** wherein the first and second time lengths are substantially the same when the parasitic capacitances of the first and second pixels are substantially the same.

* * * * *

专利名称(译)	能够减少图像闪烁的液晶显示装置及其驱动方法		
公开(公告)号	US8253673	公开(公告)日	2012-08-28
申请号	US12/577700	申请日	2009-10-12
[标]申请(专利权)人(译)	许朝进 董先生MU LIN 陈仁杰		
申请(专利权)人(译)	许超CHING 董先生MU-LIN 陈仁杰		
当前申请(专利权)人(译)	友达光电.		
[标]发明人	HSU CHAO CHING TUNG MU LIN CHEN JEN CHIEH		
发明人	HSU, CHAO-CHING TUNG, MU-LIN CHEN, JEN-CHIEH		
IPC分类号	G09G3/36		
CPC分类号	G09G3/3648 G09G2300/0426 G09G2310/067 G09G2320/0219 G09G2320/0247		
审查员(译)	阮箬		
优先权	098109623 2009-03-24 TW		
其他公开文献	US20100245333A1		
外部链接	Espacenet USPTO		

摘要(译)

用于驱动液晶显示器的方法调节栅极驱动信号的下降沿以减少图像闪烁。第一栅极驱动信号在信号下降沿从高电平下降到第一电平。第二栅极驱动信号在信号下降沿从高电平下降到第二电平。当第一像素的寄生电容大于第二像素的寄生电容时，第一电平低于第二电平；当第一像素的寄生电容与第二像素的寄生电容基本相同时，第一电平与第二电平相同；当第一像素的寄生电容小于第二像素的寄生电容时，第一电平高于第二电平。

