



US007511777B2

(12) **United States Patent**
Lee

(10) **Patent No.:** **US 7,511,777 B2**
(45) **Date of Patent:** **Mar. 31, 2009**

(54) **LIQUID CRYSTAL DISPLAY DEVICE WITH COMPENSATING PATTERNS ON CAPACITOR ELECTRODES**

5,173,792 A *	12/1992	Matsueda	349/54
5,734,455 A	3/1998	Yoshida et al.		
6,172,728 B1 *	1/2001	Hiraishi	349/139
6,900,871 B1 *	5/2005	Song et al.	349/139

(75) Inventor: **Joun Ho Lee**, Daegu-kwangyokshi (KR)

(73) Assignee: **LG Display Co., Ltd.**, Seoul (KR)

(*) Notice: Subject to any disclaimer, the term of this patent is extended or adjusted under 35 U.S.C. 154(b) by 0 days.

FOREIGN PATENT DOCUMENTS

CN	1118077 A	3/1996
JP	02-059729	2/1990
JP	06-235938	8/1994
JP	2000002889	1/2000
JP	2001109016	4/2001

(21) Appl. No.: **10/189,769**

(22) Filed: **Jul. 8, 2002**

(65) **Prior Publication Data**

US 2003/0016310 A1 Jan. 23, 2003

(30) **Foreign Application Priority Data**

Jul. 11, 2001 (KR) 10-2001-0041671

(51) **Int. Cl.**
G02F 1/1343 (2006.01)

(52) **U.S. Cl.** **349/38**; 349/39; 349/139

(58) **Field of Classification Search** 349/33-38, 349/42-43, 139; 257/59, 72; 345/92
See application file for complete search history.

(56) **References Cited**

U.S. PATENT DOCUMENTS

5,032,536 A * 7/1991 Oritsuki et al. 438/30

* cited by examiner

Primary Examiner—David Nelms

Assistant Examiner—Hoan C Nguyen

(74) *Attorney, Agent, or Firm*—McKenna Long & Aldridge LLP

(57) **ABSTRACT**

LCD devices having automatic compensation for parasitic capacitance deviations caused by photolithography errors. Compensation is provided by compensation features on gate electrodes and on source/drain electrodes. Photolithography errors, which cause parasitic capacitance deviations, also cause compensating capacitance changes between the compensation features.

11 Claims, 5 Drawing Sheets

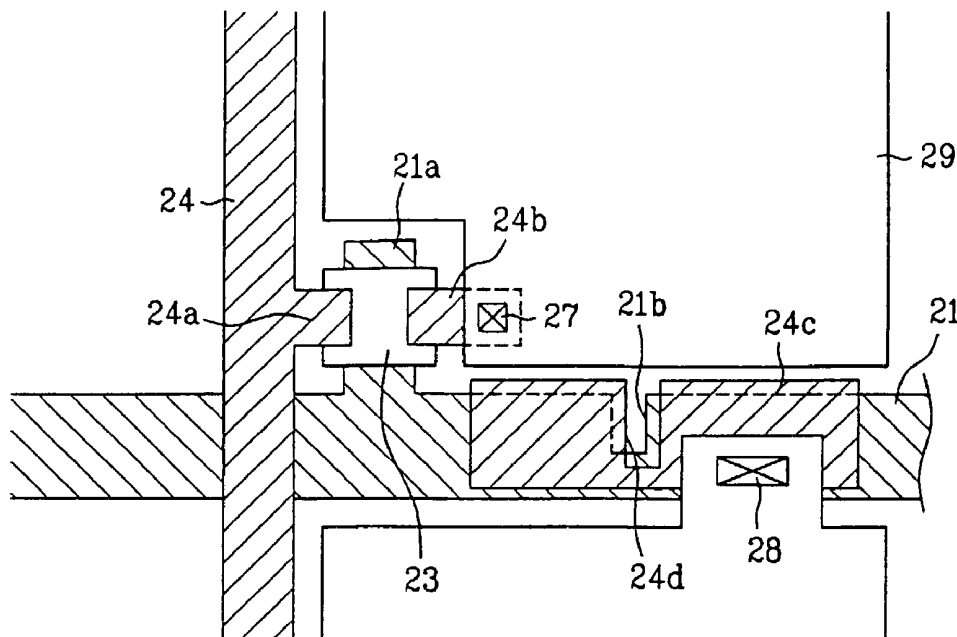


FIG. 1
Related Art

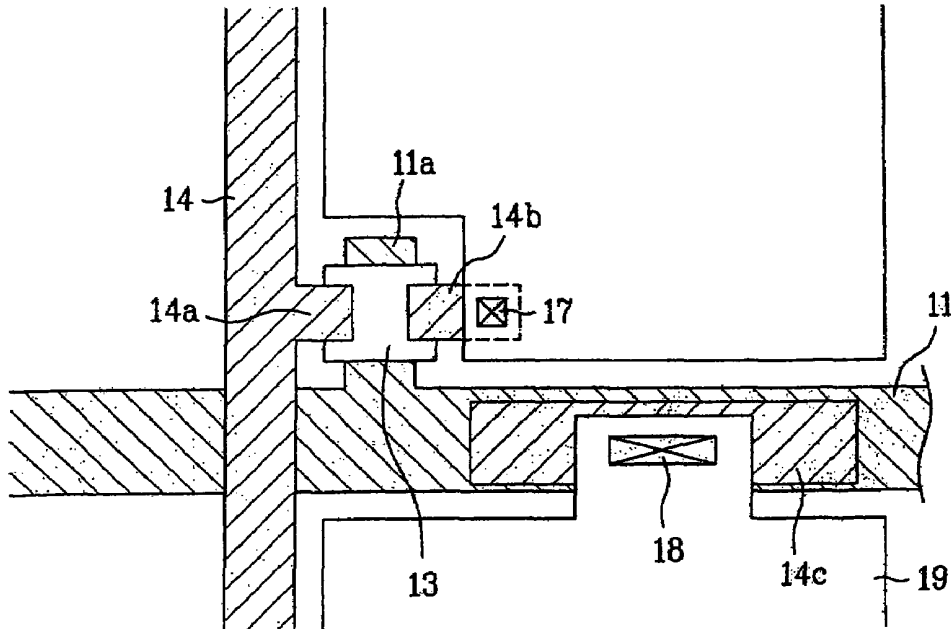


FIG. 2
Related Art

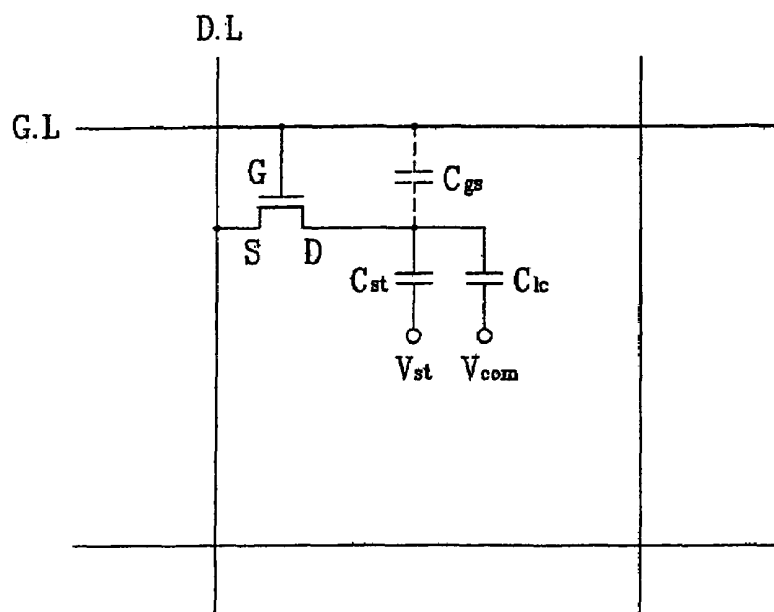


FIG. 3

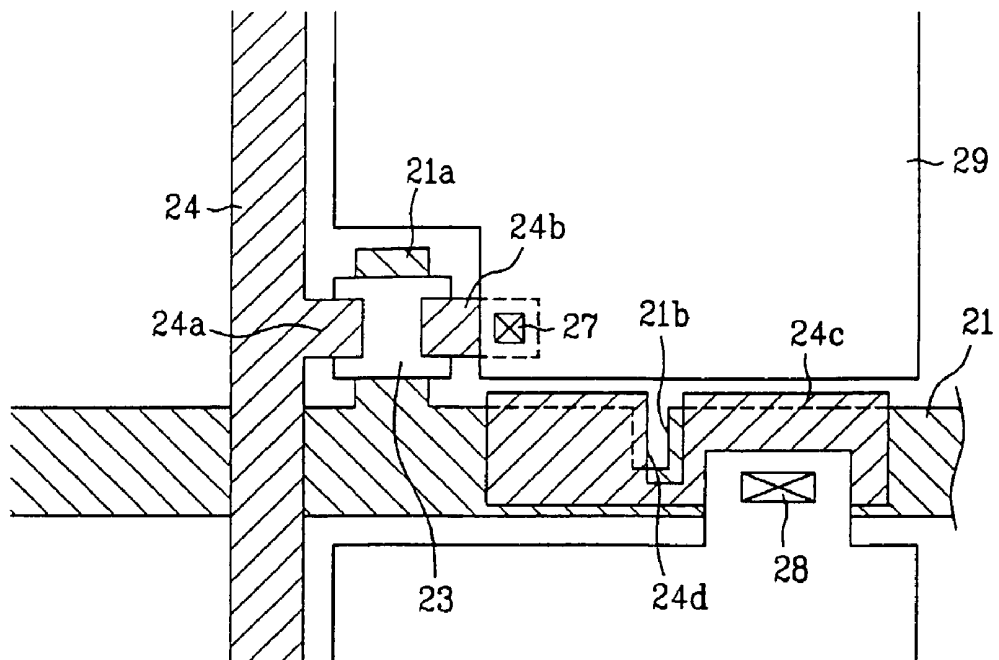


FIG. 4

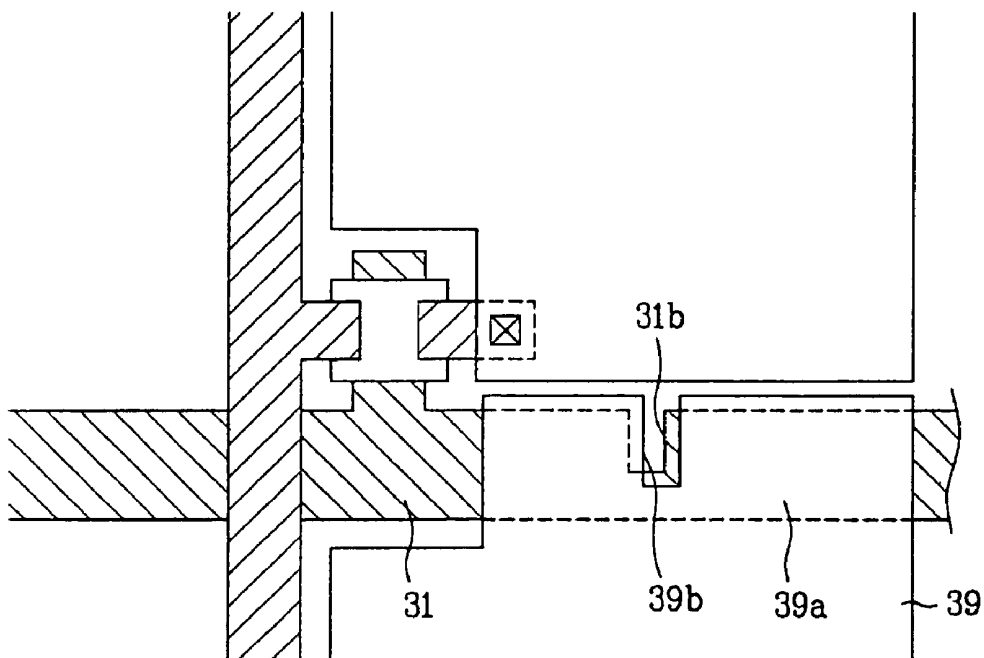


FIG. 5

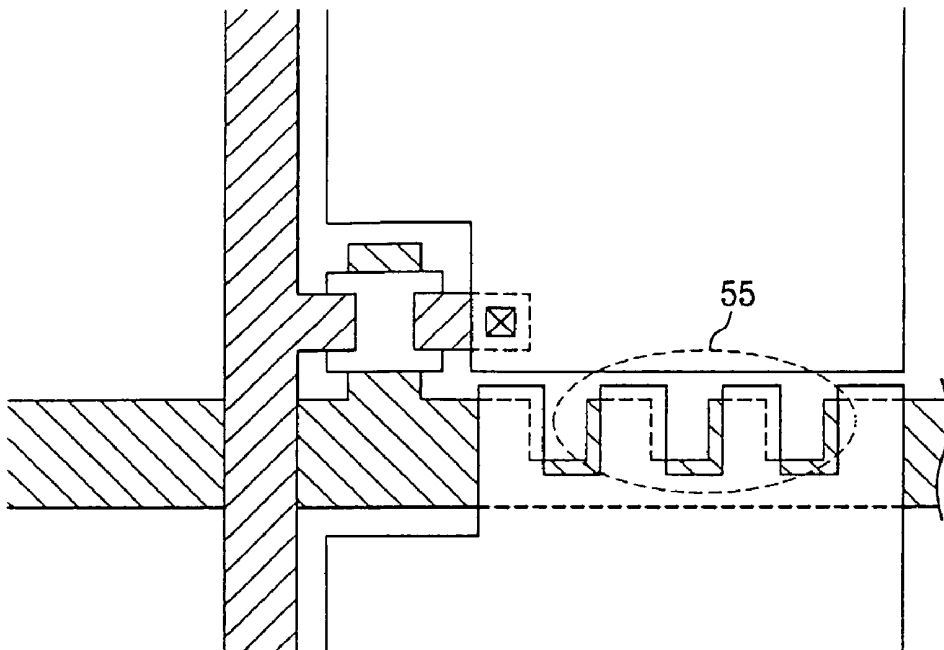


FIG. 6

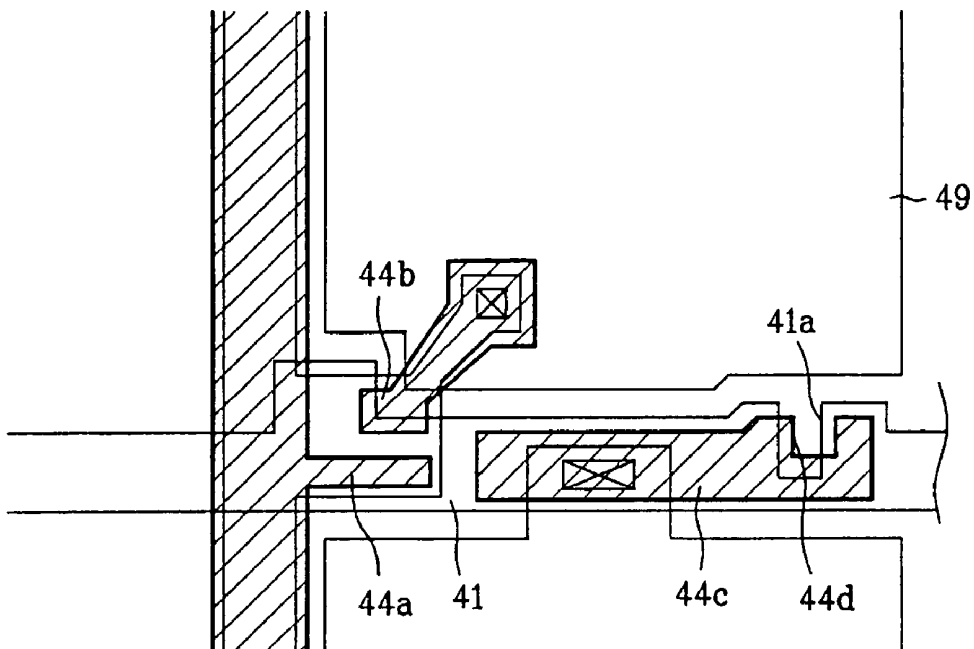


FIG. 7

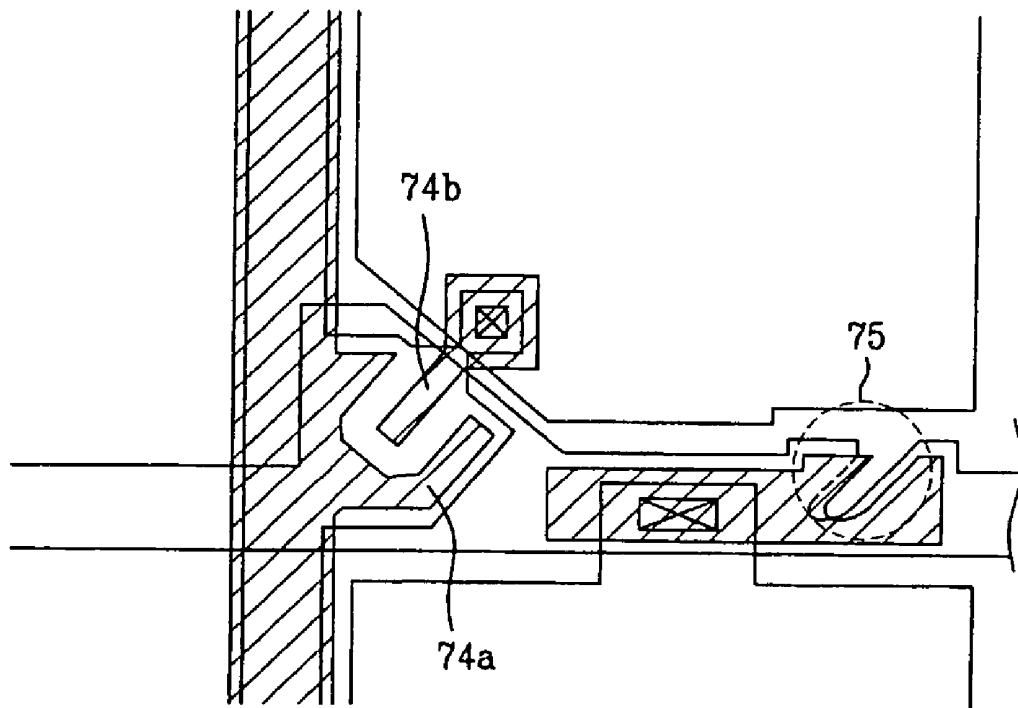
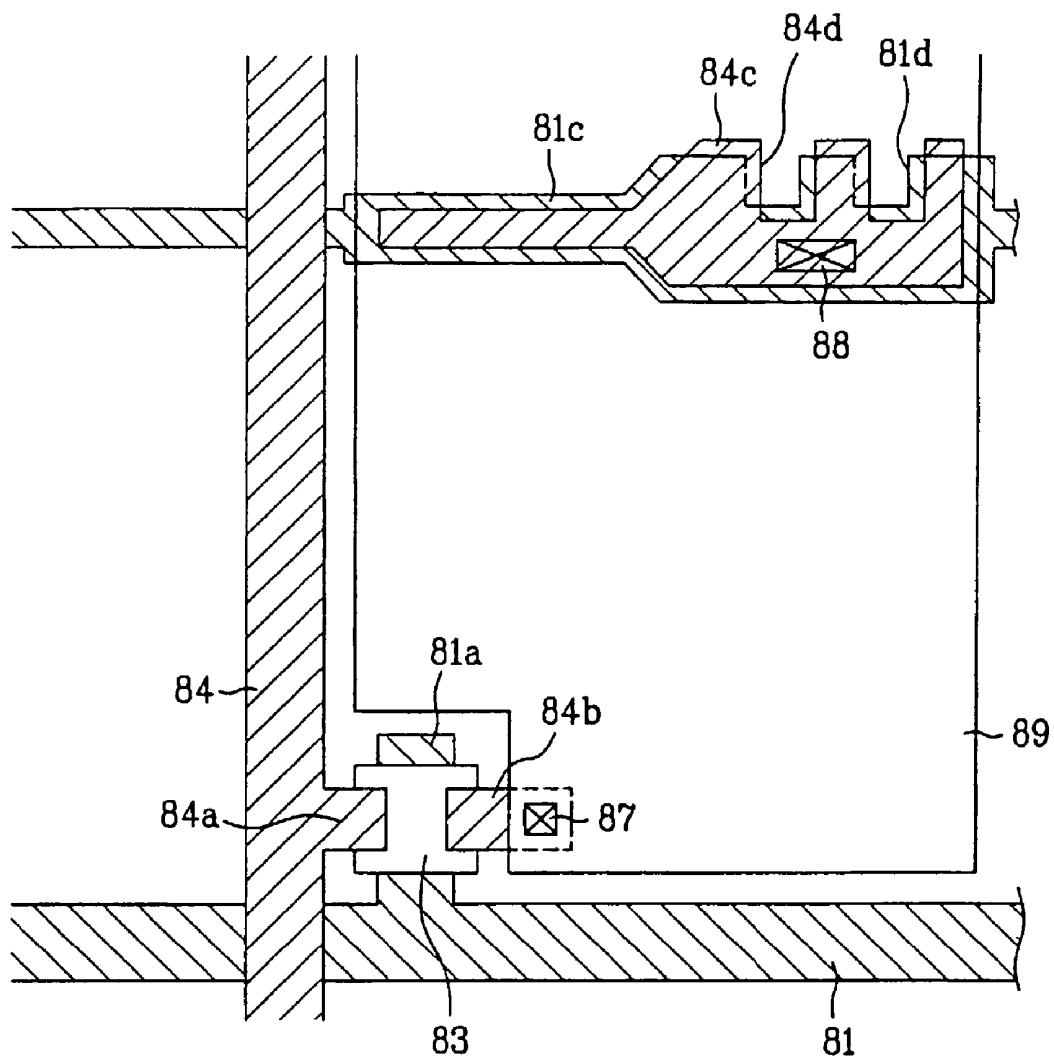


FIG. 8



LIQUID CRYSTAL DISPLAY DEVICE WITH COMPENSATING PATTERNS ON CAPACITOR ELECTRODES

This application claims the benefit of the Korean Application No. 2001-41671, filed on Jul. 11, 2001, which is hereby incorporated by reference.

BACKGROUND OF THE INVENTION

1. Field of the Invention

The present invention relates to liquid crystal display (LCD) devices, and more particularly, to improving the image quality of LCD devices.

2. Discussion of the Related Art

Because of their advantages of low power consumption, lightweight, and small size, liquid crystal displays (LCDs) are highly attractive alternatives to cathode ray tubes (CRTs) in many applications.

An LCD device typically includes arrays of switching devices and pixel electrodes on an array substrate, a filter substrate having a common electrode, a color filter array and a black matrix, and a liquid crystal layer that is disposed between the array and filter substrates. The switching devices control the applications of signal voltages to the pixel electrodes. The pixel electrodes interact with the liquid crystal layer to selectively transmit light from pixel regions in response to the applied signal voltages. The array substrate further includes an array of storage capacitors for maintaining pixel information between applications of the signal voltages. The common electrode acts with the pixel electrodes to produce electric fields across the liquid crystal layer. The color filter layer colors the selectively transmitted light. The black matrix prevents light from entering regions where liquid crystal arrangement is not controllable.

Each storage capacitor maintains the signal voltage applied to a pixel electrode when the switching transistor (typically a thin film transistor) for that pixel electrode is turned-off. The purpose of the storage capacitor is to prevent picture quality deterioration. Storage capacitors are of a storage capacitance type or a supplemental capacitance type, with the distinction depending on how the capacitor electrodes are formed.

In the storage capacitance type, a distinct storage electrode is provided for each storage capacitor. In the supplement capacitance type, part of a gate line acts as a storage electrode. In general, LCD devices that use supplement capacitance type storage capacitors can have higher aperture ratios (because a separate storage electrode is not required) and typically have a higher fabrication yield (because of simplicity). However, LCD devices that use supplement capacitance type storage capacitors generally have relatively poor picture quality, at least partially because supplement capacitance type storage capacitors are not well suited to dot-inversion and column inversion drive systems.

On the other hand, LCD devices that use storage capacitor type storage capacitors often have lower aperture ratios, but better picture quality. Accordingly, LCD devices that use the storage capacitance type storage capacitors are better suited for video displays in which the low aperture ratio is acceptable.

A related art LCD device that uses supplement capacitance type storage capacitors will be described with reference to FIG. 1 and to FIG. 2. FIG. 1 is a simplified schematic view of the related art LCD device, while FIG. 2 provides an equivalent circuit diagram of a pixel. That LCD device includes gate lines 11 that are formed on a first substrate, an insulating film (not shown) formed over the entire surface of the first sub-

strate, including the gate lines 11, and data lines 14 that cross the gate lines 11 to define pixel regions. Upper capacitor electrode 14c, beneficially formed at the same time as the data lines, are located over the gate insulating film and over predetermined portions of the gate lines 11. Switching devices are located near crossings of the gate lines 11 and the data lines 14. A passivation film (not shown) having a predetermined thickness is beneficially formed over the entire surface of the first substrate, including over the switching devices. Pixel electrodes 19 of indium tin oxide (ITO) are connected to the switching devices and to the upper capacitor electrodes 14c through first and second contact holes 17 and 18.

Still referring to FIG. 1, predetermined portions of the gate lines 11 serve as lower capacitor electrodes. Accordingly, each storage capacitor includes an upper capacitor electrode 14c, part of a gate line 11, and the gate insulating film, which is interposed between the upper capacitor electrode 14c and the gate lines 11.

Referring now to FIG. 2, a parasitic capacitance C_{gs} results from the gate electrode G crossing the source/drain electrodes S/D. This parasitic capacitance induces a direct current (DC) voltage offset, V_p , when an AC voltage is applied to the liquid crystal. The DC voltage offset V_p results in undesirable effects, such as flicker, image "sticking," and uneven screen brightness. To solve such problems, the storage capacitor provides a storage capacitance C_{st} that improves picture quality by reducing changes in V_p . The storage capacitance C_{st} increases as the size of the storage capacitor electrode increases. However, if the storage capacitor electrode increases too much, the aperture ratio is reduced. Therefore, an optimal storage capacitor electrode size should be maintained.

Unfortunately, the overlap of the gate electrode 11a and the source/drain electrodes 14a and 14b may vary because of photolithography errors. In that case, the parasitic capacitance can increase, and thus the desired V_p value cannot be obtained.

For reference, the remaining elements of FIG. 2 will be described. D.L denotes data lines 14, to which bipolar signal voltages are applied, while G.L denotes gate lines 11, to which scanning signals are applied. C_{lc} denotes charge capacitance stored in the interval between a pixel electrode and the common electrode V_{com} , while C_{st} denotes a charge capacitance stored in the interval between the predetermined part of the gate lines 11 and the upper capacitor electrode 14c.

Referring once again to FIG. 1, each switching device includes a gate electrode 11a that is diverged from a gate line 11, a gate insulating film (not shown, but located over the entire surface of the first substrate, including the gate lines 11), a semiconductor layer 13 on the gate insulating film and over the gate electrode 11a, and source/drain electrodes 14a and 14b at ends of the semiconductor layer 13. The switching device beneficially is an amorphous silicon thin film transistor (a-Si TFT).

To complete the LCD device, the array substrate, provided with the above elements, is attached to a color filter substrate having a black matrix, a red, green, and blue (R, G, B) color filter layer, and an ITO-based common electrode. A liquid crystal is disposed between the two attached substrates.

While generally successful, the related art LCD device has problems. Even though an effort is made to reduce changes in V_p by restraining the parasitic capacitance, V_p is not well controlled because of parasitic capacitance deviations. Such deviations can be caused by misalignment of the gate electrodes and the source/drain electrodes, which can occur because of process errors in critical dimensions (CD) and photolithography.

Large-screen display devices are particularly susceptible to capacitance problems because such displays are highly sensitive to flicker and/or picture brightness problems. Therefore, an LCD device that is compensated for parasitic capacitance deviations would be beneficial. Even more beneficial would be an LCD device that maintains a more uniform V_p .

SUMMARY OF THE INVENTION

Accordingly, the present invention is directed to a liquid crystal display device that substantially obviates one or more problems due to limitations and disadvantages of the related art.

An advantage of the present invention an LCD device having improved picture quality by automatically compensating for parasitic capacitance deviations so as to maintain a constant V_p .

To achieve this and other advantages and in accordance with the invention, as embodied and broadly described herein, an LCD according to the principles of the present invention includes adjacent first and second substrates, gate lines on the first substrate, data lines that cross the gate lines, thus defining pixel regions, capacitor electrodes over predetermined parts of the gate lines, thin film transistors formed near crossings of the gate lines and data lines, a pixel electrode in each pixel region, and a liquid crystal layer disposed between the first and second substrates. The gate lines have one or more first compensating patterns, while the capacitor electrodes have one or more second compensating patterns.

Often, a photolithography process is used to form the source/drain electrodes of the thin film transistors. Parasitic capacitance deviations that result from photolithography process errors are automatically compensated for by corresponding deviations in the first and second compensating patterns that change the capacitances of the storage capacitors. Thus, the storage capacitances automatically compensate for parasitic capacitance deviations.

The shapes of the first and second compensating patterns beneficially depend on the channel shapes of the thin film transistors. If the channels have an "I" or an "L" shape, the first and second compensating patterns are beneficially notched. If the channel has a "U" shape, the first and second compensating patterns beneficially have "U" shapes.

It is to be understood that both the foregoing general description and the following detailed description of the present invention are exemplary and explanatory and are intended to provide further explanation of the invention as claimed.

BRIEF DESCRIPTION OF THE DRAWINGS

The accompanying drawings, which are included to provide a further understanding of the invention and are incorporated in and constitute a part of this application, illustrate embodiments of the invention and together with the description serve to explain the principle of the invention. In the drawings:

FIG. 1 is a top down view of a related art LCD;

FIG. 2 is an equivalent circuit diagram of a pixel of the LCD of FIG. 1;

FIG. 3 is a top down view of an LCD device that is in accord with a first embodiment of the present invention;

FIG. 4 is a top down view of an LCD device that is in accord with a second embodiment of the present invention;

FIG. 5 is a top down view of an LCD device that is in accord with a third embodiment of the present invention;

FIG. 6 is a top down view of an LCD device that is in accord with a fourth embodiment of the present invention;

FIG. 7 is a top down view of an LCD device that is in accord with a fifth embodiment of the present invention; and

FIG. 8 is a top down view of an LCD device that is in accord with a sixth embodiment of the present invention.

DETAILED DESCRIPTION OF THE INVENTION

Reference will now be made in detail to illustrated embodiments of the present invention, examples of which are shown in the accompanying drawings. Wherever possible, the same reference numbers will be used throughout the drawings to refer to the same or like parts.

FIG. 3 is a top down view of an LCD device that is in accord with a first embodiment of the present invention. Specifically, FIG. 3 shows an LCD that uses a supplement capacitance type storage capacitor. That LCD device includes array and color filter substrates and an interposed liquid crystal layer. A black matrix for preventing light leakage, and a red, green, and blue (R,G,B) color filter layer for selectively transmitting light to display colors are formed on the color filter substrate. A common electrode of ITO is also formed on the color filter substrate.

Referring now to FIG. 3, gate lines 21 are formed on the array substrate. Those gate lines have one or more first compensating patterns (described in more detail subsequently). A gate insulating film (not shown) is formed over the entire surface of the array substrate, including over the gate lines 21, by depositing an inorganic insulating film such as SiN_x and/or SiO_x . Data lines 24 cross the gate lines 21, thus defining pixel regions. Thin film transistors are formed near the crossings of the gate and data lines 21 and 24. Each thin film transistor includes a gate electrode 21a, and source/drain electrodes 24a and 24b. Upper capacitor electrodes 24c, each having one or more second compensating patterns, are formed at the same time as the data lines 24 and the source/drain electrodes 24a and 24b. The upper capacitor electrodes 24c are located over predetermined parts of the gate lines 21. A passivation film (not shown) is formed over the entire surface of the array substrate, including over the thin film transistor, by depositing an organic insulating film of BCB and/or acrylic resin, or by depositing an inorganic insulating film, such as SiN_x and/or SiO_x . In any event, the passivation film has a predetermined thickness. A pixel electrode 29, beneficially made of ITO, is connected to each thin film transistor and to an adjacent upper capacitor electrode 24c by way of first and second contact holes 27, 28 that are formed by selectively etching the passivation film.

Each thin film transistor includes a gate electrode 21a (which diverges from a gate lines 21), a gate insulating film (not shown, but which is formed over the entire surface of the substrate, including the gate lines 21), an island shaped semiconductor layer 23 on the gate insulating film and over the upper gate electrode 21a, and source/drain electrodes 24a and 24b at ends of the semiconductor layer 23. As shown, the channel formed by the semiconductor layer 23 has an "I" shape.

The gate lines 21 and data lines 24 are beneficially formed by depositing a low resistant metal, such as Al, Cu, W, Mo, Ti, Ta, and Al, by sputtering, and then patterning using a photolithography process.

Storage capacitors are included to reduce voltage drops due to parasitic capacitances between crossing portions of the gate electrodes 21a and the source/drain electrodes 24a and 24b. Each storage capacitor include part of a gate line 21 (which serves as a lower capacitor electrode), an upper

capacitor electrode **24c**, and a gate insulating film that is interposed between the gate line **21** and the upper capacitor electrode **24c**.

Still referring to FIG. 3, notch shaped first compensating patterns **21b** are formed on the gate lines **21**, and notch shaped second compensating patterns **24d** are formed on the upper capacitor electrodes **24c**. The compensating patterns **21b** and **24d** help maintain a constant (uniform) V_p by compensating for parasitic capacitance deviations caused by misalignment between the gate electrodes **21a** and the source/drain electrodes **24a** and **24b** that result from photolithography errors. In other words, as the overlap of a gate electrode **21a** and source/drain electrodes **24a** and **24b** changes, so does the overlap of the first compensating pattern **21b** and the second compensating pattern **24d**, but in a manner that automatically compensates the storage capacitance for changes in the parasitic capacitance. As shown, the notched first and second compensating patterns **21b** and **24d** are located such that the second compensating patterns **24d** partially overlap the first compensating patterns **21b**.

The structure of the first and second compensating patterns is devised by taking into consideration that in an "I"-shaped thin film transistor, the overlap of the gate electrode **21a** and the source/drain electrodes **24a** and **24b** does not change much by a vertical shift, but changes significantly due to side-to-side shifts.

Also, each storage capacitor includes part of a gate line **21**, an upper capacitor electrode **24c**, and an interposed insulating film **22**. Charges are stored in the storage capacitor by voltage applied to the gate lines **21** and by signal voltages applied to the upper capacitor electrode **24c** from the data lines **24**.

As shown in formula (1), the parasitic capacitance C_{gs} is highly influential on V_p . Furthermore, C_{gs} is closely related to the characteristics of the panel, and is very important to picture quality.

$$V_p = \frac{C_{gs}}{C_{gs} + C_{st} + C_{lc}} V_g \quad (1)$$

Accordingly, if the parasitic capacitance C_{gs} in a pixel is different, the DC voltage offset V_p in that pixel is also different. Such voltage changes can cause problems, such as flicker and afterimages. Therefore, the first and second compensating patterns **21b** and **24d** are included to make V_p substantially constant by compensating for changes in the parasitic capacitance C_{gs} .

In the first and second compensating patterns **21b** and **24d**, if the parasitic capacitance C_{gs} increases, the storage capacitor capacitance increases, and if the parasitic capacitance decreases, the storage capacitor capacitance decreases. Thus, the following formula (2) can be expressed.

$$V_p = \frac{C_{gs} + C_{gs}}{(C_{gs} + C_{gs}) + (C_{st} + C_{st}) + C_{lc}} V_g \quad (2)$$

The method of using part of the gate lines **21** as storage capacitor electrodes is a characteristic of supplement capacitance type storage capacitors. A separate electrode for the storage capacitor is not necessary.

Meanwhile, the technical features of the present invention can be applied not only to devices in which the upper capacity electrodes **24c** are electrically connected to pixel electrodes

29, but, as shown in FIG. 4, to devices in which an integral body forms each upper capacitor electrode **39a** and each pixel electrode **39**.

As shown in FIG. 4, storage capacitors in accord with a second embodiment of the present invention include gate lines **31** that have first compensating patterns **31b** and which serve as lower capacitor electrodes, upper capacitor electrodes **39a** that have second compensating patterns **39b** which partially overlap the first compensating patterns **31b**, and an insulating film (comprised of a gate insulating film and a passivation film) interposed between the gate lines **31** and the upper capacitor electrode **39a**. The storage capacitors automatically change storage capacitances to compensate for parasitic capacitance deviations such that V_p is maintained constant.

Both the first and second compensating patterns **31b** and **39b** are notches, with the second compensating patterns **39b** being notched deeper than the first compensating patterns **31b** (which is wider).

Though FIGS. 3 and 4 show one set of compensating patterns, FIG. 5 illustrates a plurality of sets of compensating patterns **55**.

The principles of the present invention are applicable with "L" and "U"-shaped TFTs, as well as with "I"-shaped TFTs. "L" and "U"-shaped TFTs have improved control of flicker and afterimages as a result of reduced overlaps of gate lines and source/drain electrodes. In particular, the "U"-shaped TFT represents a considerably improved structure in controlling V_p changes caused by pattern misalignment of the upper and lower layers because of photolithography errors.

However "L" or "U"-shaped TFTs remain susceptible to V_p changes caused by parasitic capacitance deviations. Thus, the technical features of the present invention can also benefit "L" or "U"-shaped TFTs. Beneficially, the compensating patterns used with "L" and "U"-shaped TFTs are somewhat different.

FIG. 6 shows an "L"-shaped TFT. The first compensating patterns **41a** on the gate lines **41** and the second compensation patterns **44d** on the upper capacitor electrodes **44c** take the form of partially overlapping notches (with the second notch being narrower than the first notch). If a parasitic capacitance C_{gs} increases because the source/drain electrodes **44a** and **44b** are shifted by photolithography, the storage capacitance C_{st} increases because of a resulting change in overlap between a first compensating pattern **41a** and a second compensating pattern **44d**.

Referring now to FIG. 7, with a "U"-shaped TFT, the first and second compensating patterns, in the area **75**, partially overlap and are beneficially "U" shaped. Since the parasitic capacitance C_{gs} of a "U"-shaped TFT is not changed significantly by a side-to-side shift of the source/drain electrodes **74a** and **74b**, but is significantly changed by a 45° shift, the compensating patterns are modified to significantly compensate for changes caused by 45° shifts. However, the present invention is useful with not only "U"-shaped TFTs having 45° channels, but also with "U"-shaped TFTs having 0° or 90° channels.

The aforementioned storage capacitor structures are of the supplement capacitance type, which uses part of the gate lines as lower capacitor electrodes. However, the technical features of the present invention can also be used with the storage capacitance types, which have separate lower capacitor electrodes.

Referring now to FIG. 8, an LCD device that uses storage capacitance type storage capacitors includes gate lines **81**, lower capacitor electrodes **81c**, data lines **84**, upper capacitor electrodes **84c**, thin film transistor, a passivation film (not

shown), and pixel electrodes **89**. The gate lines **81** are formed on an array substrate. The lower capacitor electrodes **81c** are formed parallel to the gate lines **81** and have one or more first compensating patterns **81d**. The data lines **84** cross the gate lines **81** to define pixel regions. The upper capacitor electrodes **84c** are formed over predetermined portions of the lower capacitor electrodes **81c** and have one or more second compensating patterns **84d**. The thin film transistors are formed near crossings of the gate and data lines **81** and **84**. The passivation film (not shown) is formed over the entire surface of the substrate, including over the thin film transistors. Each pixel electrode **89** is connected to a thin film transistor and to an upper capacitor electrode **84c** through first and second contact holes **87** and **88** that are formed by selectively eliminating the passivation film.

The lower capacitor electrodes **81c** are beneficially formed at the same time as the gate lines **81**, and the upper capacitor electrodes **84c** are beneficially formed at the same time as the data lines **84** and source/drain electrodes **84a** and **84b**. *Both the lower and upper capacitor electrodes are beneficially formed by depositing low resistant metals, such as Al, Cu, W, Mo, Ti, Ta, and Al, by a sputtering process, and then by patterning using a photolithography process.*

The upper and lower capacitor electrodes **81c** and **84c** have a gate insulating film interposed between them. The gate insulating film serves as part of the storage capacitor. The first and second compensating patterns **81d** and **84d** provided in the upper and lower capacitor electrodes **81c** and **84c** help maintain the V_p of each pixel constant (uniform) by compensating for parasitic capacitance deviations of that pixel. Thus, screen problems such as flicker and afterimages can be reduced.

The thin film transistors each include a gate electrode **81a**, a gate insulating film (not shown), a semiconductor layer **83**, and source/drain electrodes **84a** and **84b**. A thin film transistor can have three different shapes (i.e., an "I"-shaped TFT, an "L"-shaped TFT, and a "U"-shaped TFT) according to different channel structures produced by the gate electrode **81a** and the source/drain electrodes **84a** and **84b**. Beneficially, the compensating patterns **81d** and **84d** take the same shape as the TFT channel pattern.

As aforementioned, the LCD device has advantages.

First, the compensating patterns compensate for parasitic capacitance deviations to maintain a uniform V_p . This reduces problems such as flicker, afterimages, and uneven screen brightness, leading to improved picture quality.

Second, better picture quality makes large area LCD devices more attractive, which increases the potential markets.

Third, picture quality deterioration that was not completely solved by "L"-shaped or "U"-shaped TFTs, is reduced.

It will be apparent to those skilled in the art that various modifications and variations can be made in the present invention. Thus, it is intended that the present invention covers the modifications and variations of this invention provided they come within the scope of the appended claims and their equivalents.

What is claimed is:

1. A liquid crystal display (LCD) device, comprising:
 - a first substrate and an adjacent second substrate;
 - a plurality of gate lines formed on the first substrate, wherein each gate line includes a plurality of first compensating patterns;
 - a plurality of data lines that cross the gate lines, thereby defining a plurality of pixel regions such that each pixel region is adjacent a first compensating pattern;

a capacitor electrode in each pixel region on a gate line, wherein each capacitor electrode includes a second compensating pattern;

an insulating film interposed between each capacitor electrode and each gate line;

a plurality of thin film transistors, each having a gate electrode and source/drain electrodes and each adjacent a crossing of a gate line and a data line;

a pixel electrode in each pixel region; and

a liquid crystal layer disposed between the first and second substrates,

wherein the first and second compensating patterns include recesses that correspond to a channel shape of the thin film transistor, wherein at least one of first recess of the first compensating pattern and at least one of second recess of the second compensating pattern overlap each other, wherein the second recess of the second compensating patterns are deeper than the first recess of the first compensating patterns and

wherein each first compensating pattern and each second compensating pattern partially overlap each other.

2. The LCD device of claim 1, wherein each capacitor electrode is electrically connected to a pixel electrode.

3. The LCD device of claim 1, wherein each first compensating pattern overlaps a second compensating pattern.

4. The LCD device of claim 1, wherein each thin film transistor is electrically connected to a pixel electrode.

5. The LCD device of claim 1, wherein the second compensating patterns are wider than the first compensating patterns.

6. An LCD device, comprising:

crossing gate and data lines on a first substrate and that define a pixel region;

a lower capacitor electrode in the pixel region having a first compensating pattern;

an upper capacitor electrode having a second compensating pattern over the first compensating pattern;

an insulating film between the lower and upper capacitor electrodes;

a thin film transistor adjacent a crossing of the gate line and the data line, the thin film transistor including a gate electrode and source/drain electrodes;

a pixel electrode in the pixel region that is electrically connected to the thin film transistor and to the upper capacitor electrode; and

a liquid crystal layer over the first substrate,

wherein the first and second compensating patterns include recesses that correspond to a channel shape of the thin film transistor, wherein at least one of first recess of the first compensating pattern and at least one of second recess of the second compensating pattern overlap each other, wherein the second recess of the second compensating patterns are deeper than the first recess of the first compensating patterns and

wherein the first compensating pattern and the second compensating pattern partially overlap each other.

7. The LCD device of claim 6, wherein the lower capacitor electrode is parallel to the gate lines.

8. The LCD device of claim 6, wherein the lower capacitor electrode is comprised of the same material as the gate lines.

9

9. The LCD device of claim **6**, wherein the upper capacitor electrode is comprised of the same material as the source/drain electrodes.

10. The LCD device of claim **6**, wherein the second compensating pattern is wider than the first compensating pattern.

10

11. The LCD device of claim **6**, wherein the second compensating pattern is narrower than the first compensating pattern.

* * * * *

专利名称(译)	液晶显示装置，在电容器电极上具有补偿图案		
公开(公告)号	US7511777	公开(公告)日	2009-03-31
申请号	US10/189769	申请日	2002-07-08
[标]申请(专利权)人(译)	LEE JOUN HO		
申请(专利权)人(译)	LEE JOUN HO		
当前申请(专利权)人(译)	LG DISPLAY CO. , LTD.		
[标]发明人	LEE JOUN HO		
发明人	LEE, JOUN HO		
IPC分类号	G02F1/1343 G02F1/1368 G02F1/1362 H01L29/786		
CPC分类号	G02F1/136213		
审查员(译)	内尔姆斯， DAVID		
优先权	1020010041671 2001-07-11 KR		
其他公开文献	US20030016310A1		
外部链接	Espacenet USPTO		

摘要(译)

LCD装置具有由光刻误差引起的寄生电容偏差的自动补偿。通过栅电极和源/漏电极上的补偿特征提供补偿。导致寄生电容偏差的光刻误差也导致补偿特征之间的补偿电容变化。

