



(12) **Patent Application Publication** (10) Pub. No.: US 2005/0041170 A1
Chae (43) Pub. Date: Feb. 24, 2005

Dec. 27, 2001 (KR) 2001-86429

Publication Classification

(51) **Int. Cl.⁷** **G02F 1/136; G02F 1/1333**
(52) **U.S. Cl.** **349/43; 349/122**

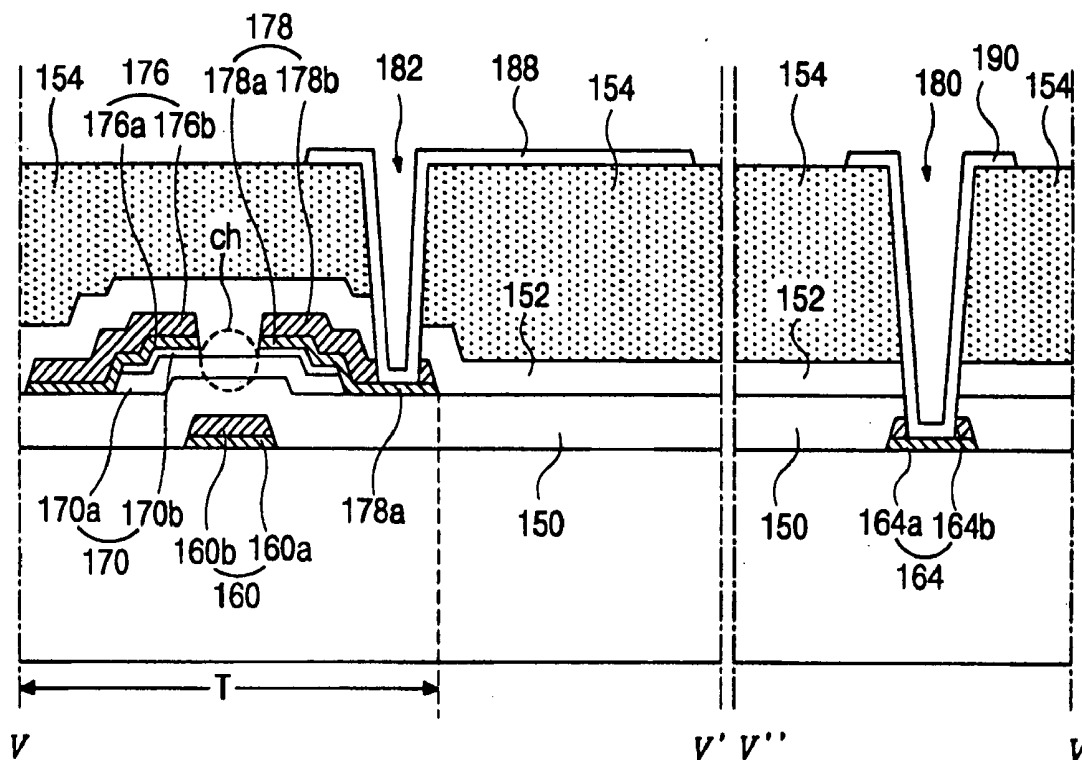
(57) **ABSTRACT**

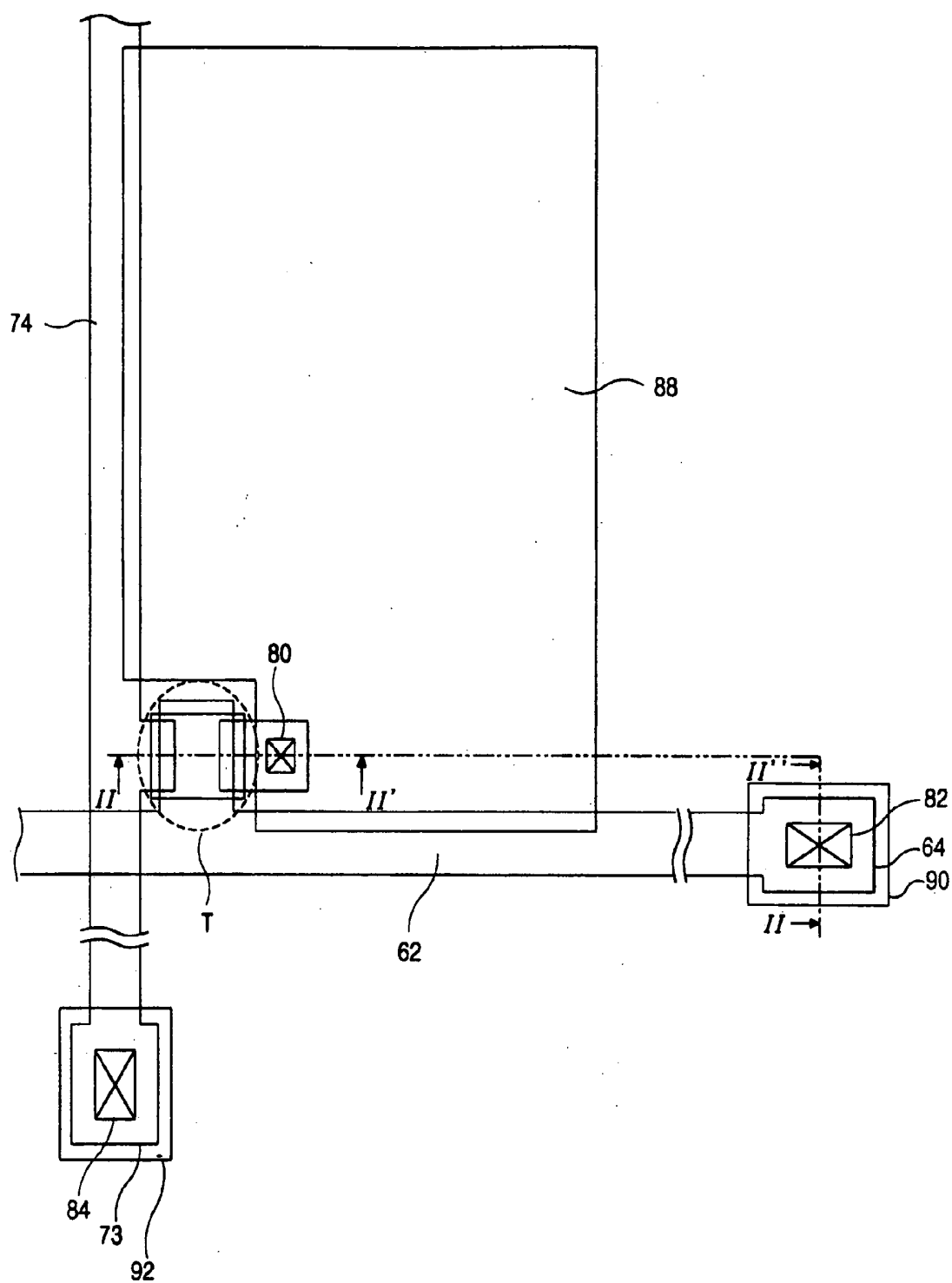
An array substrate for a liquid crystal display device includes: a substrate; a gate electrode on the substrate; a gate insulating layer on the gate electrode; a semiconductor layer on the gate insulating layer; source and drain electrodes on the semiconductor layer, the source and drain electrodes including a copper layer as an upper layer and a barrier layer as a lower layer; a first passivation layer on the source and drain electrodes; a second passivation layer on the first passivation layer, the second passivation layer having a drain contact hole through the first passivation layer, the drain contact hole exposing the barrier layer; and a pixel electrode connected to the barrier layer through the drain contact hole.

(22) Filed: **Sep. 17, 2004**

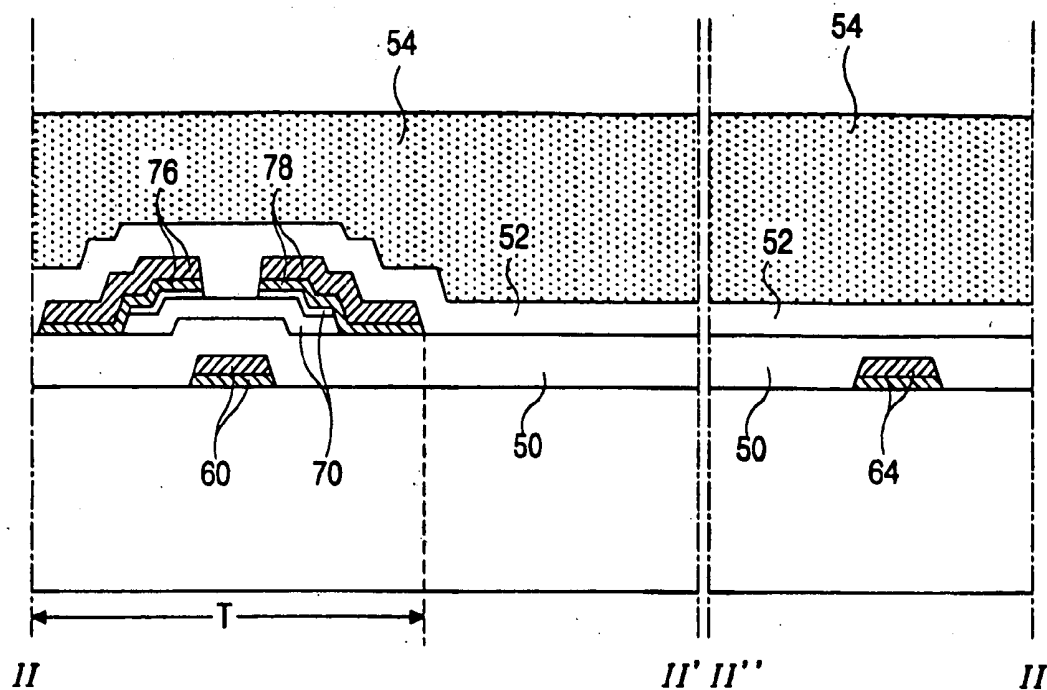
Related U.S. Application Data

(62) Division of application No. 10/319,708, filed on Dec. 16, 2002.

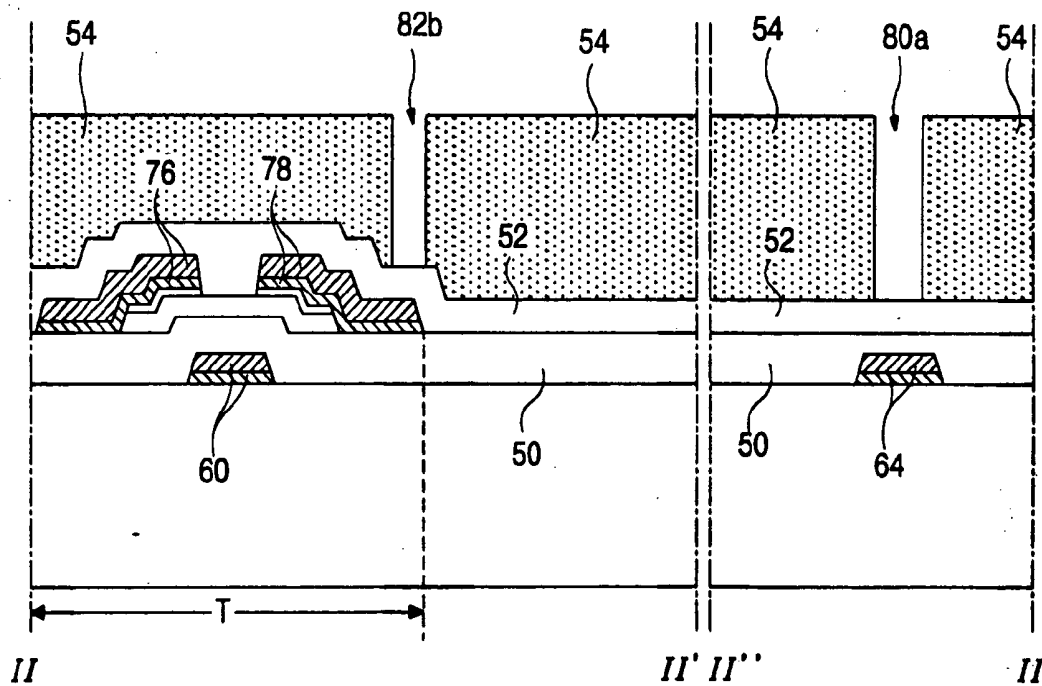




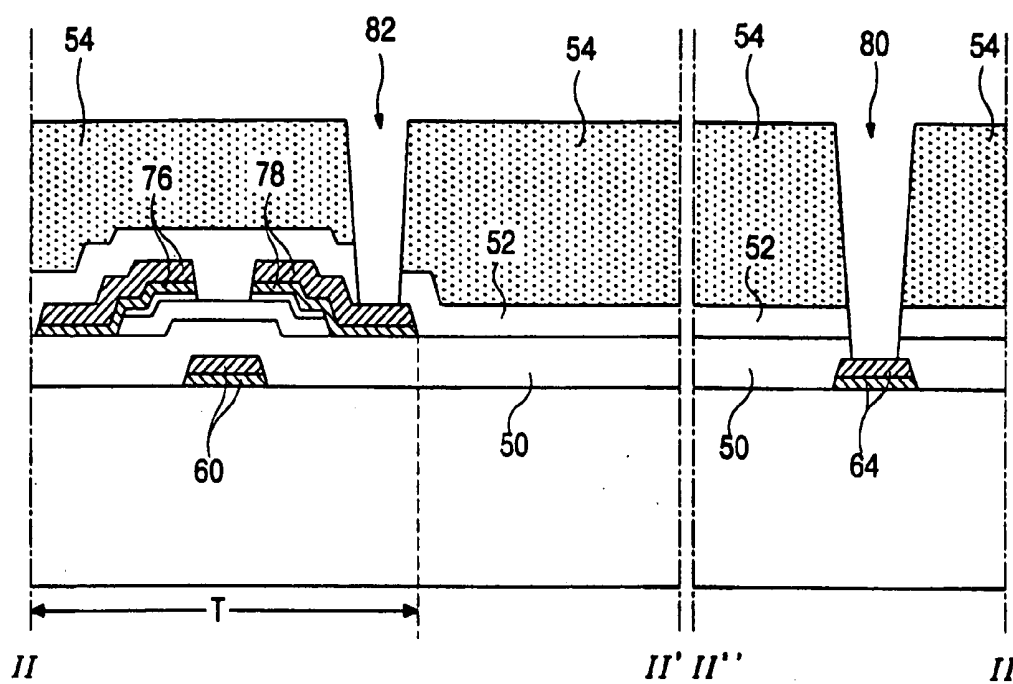
(related art)
FIG. 1



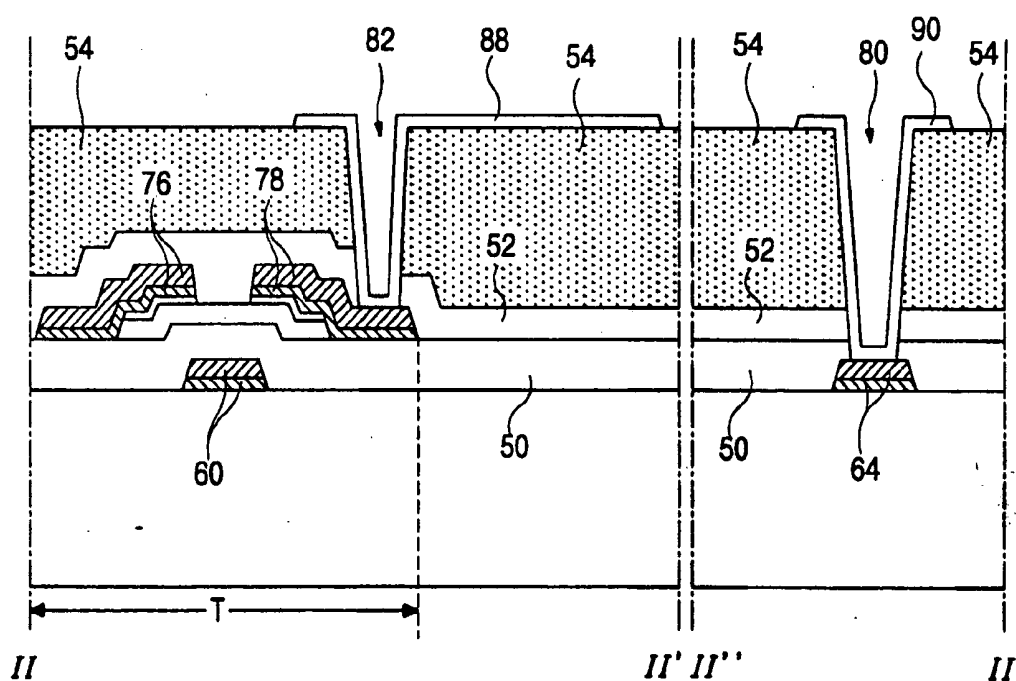
(related art)
FIG. 2A



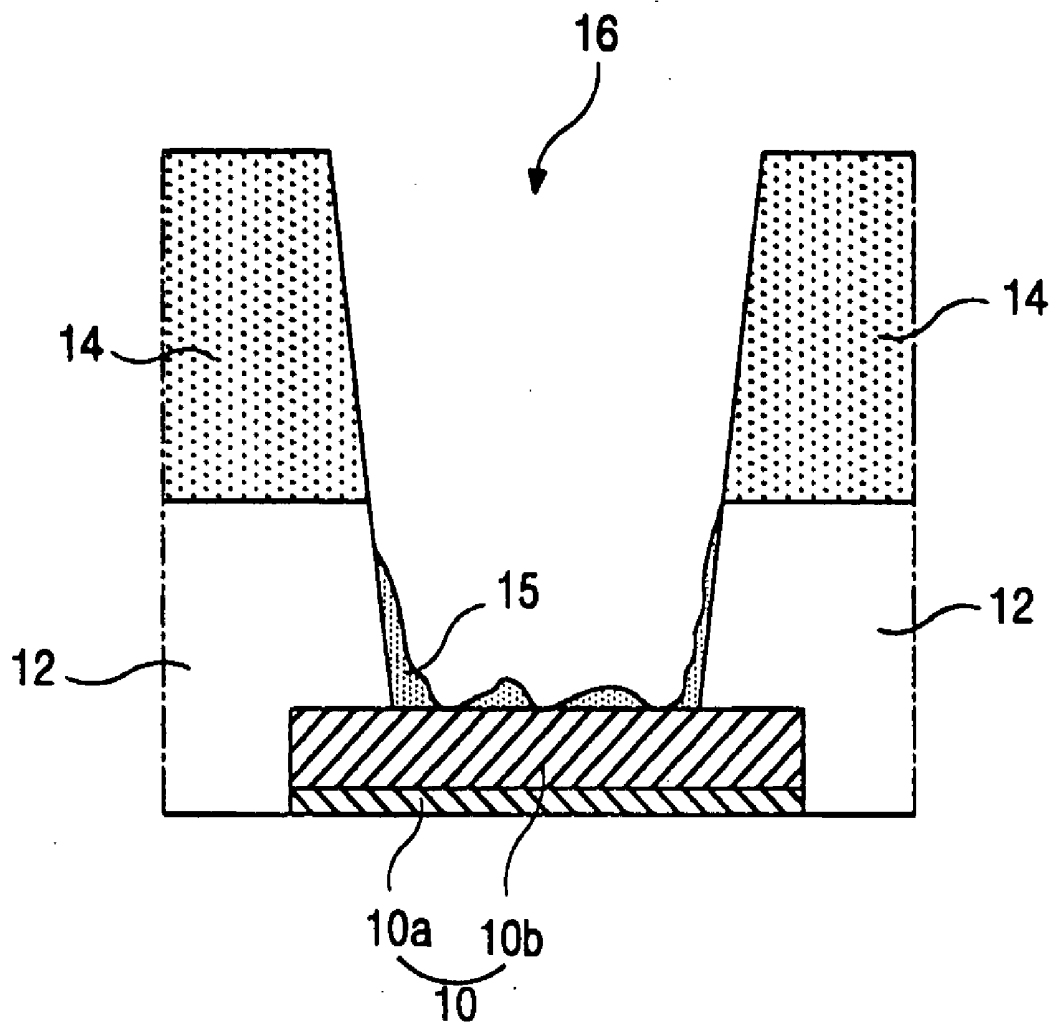
(related art)
FIG. 2B



(related art)
FIG. 2C



(related art)
FIG. 2D



(related art)
FIG. 3

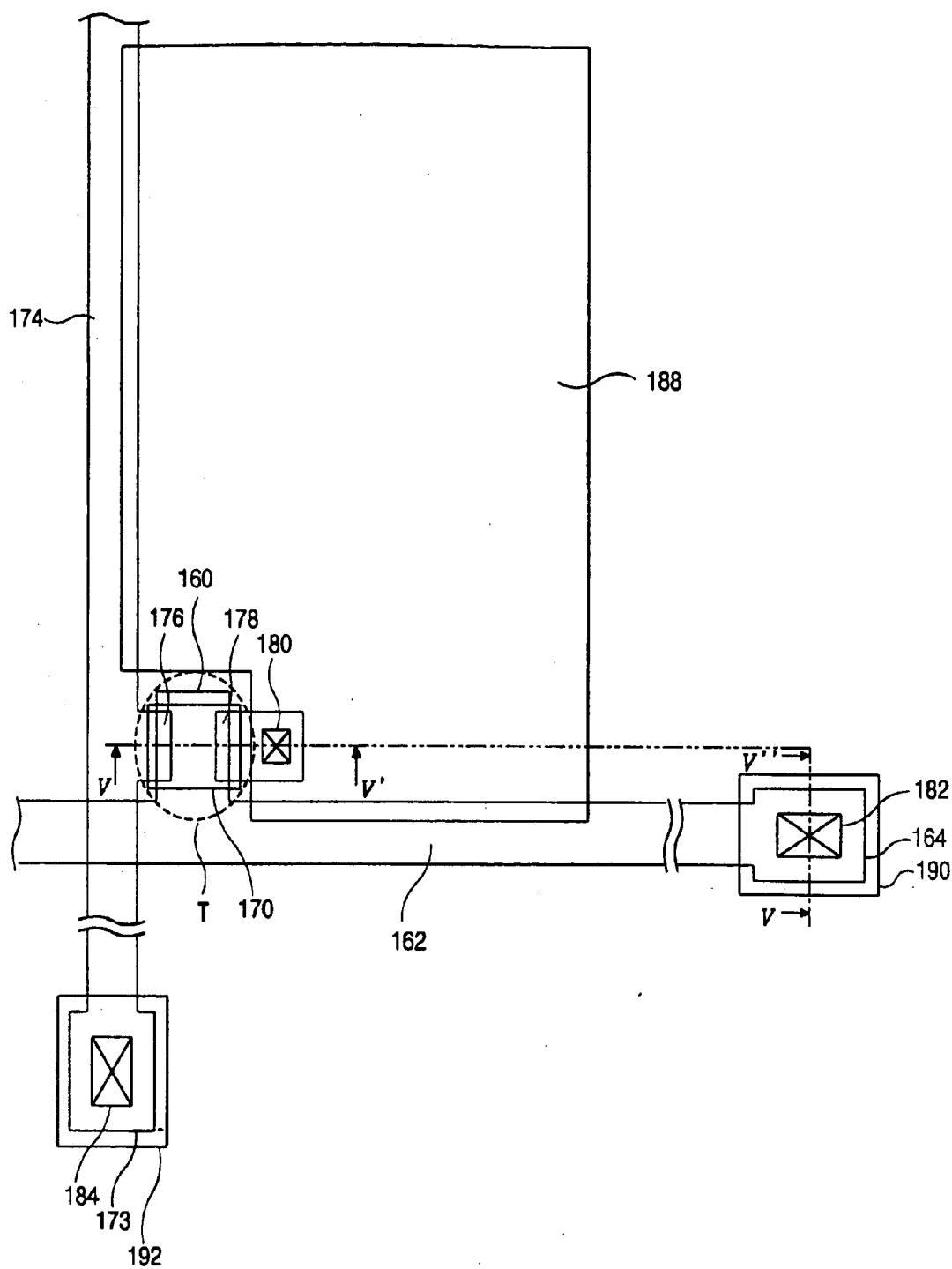


FIG. 4

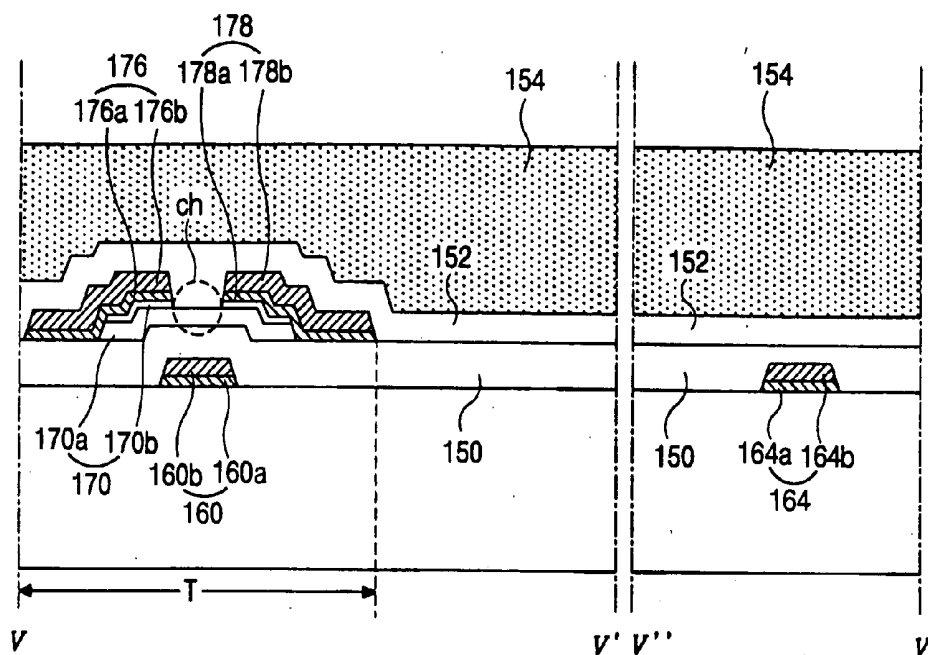


FIG. 5A

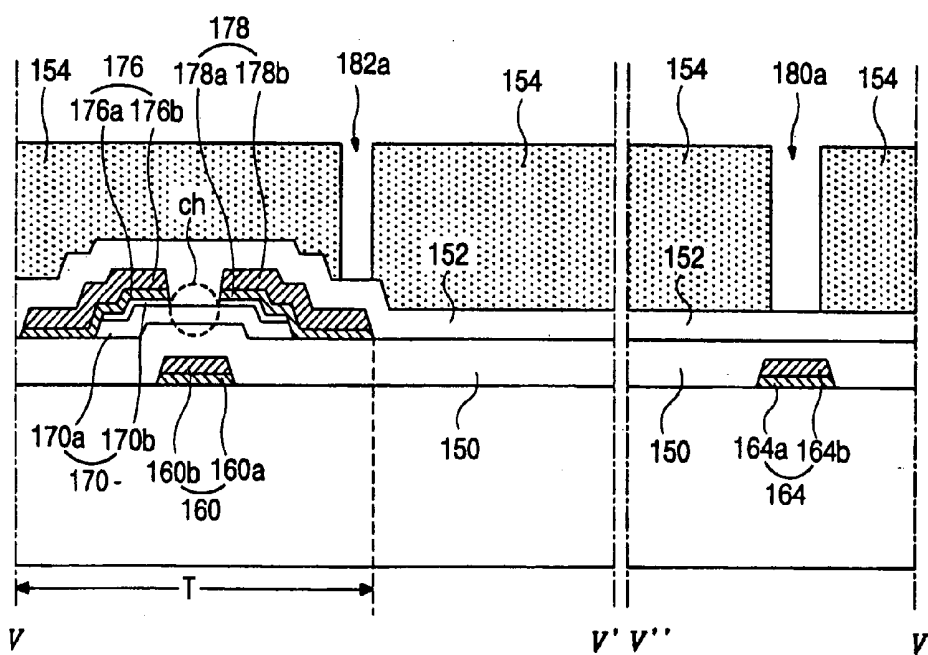


FIG. 5B

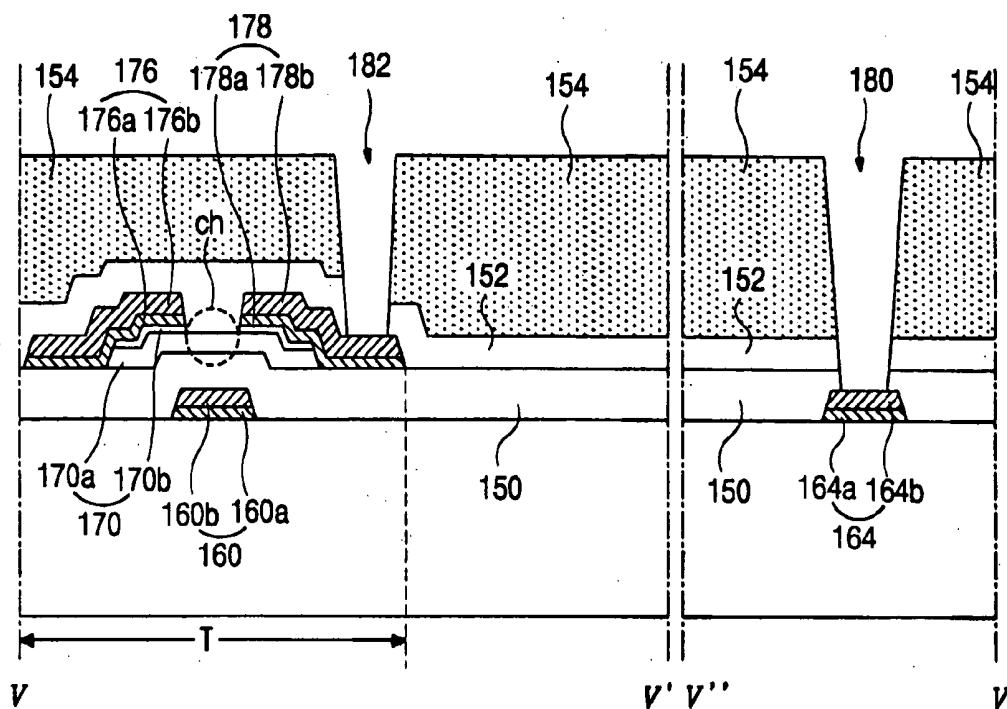


FIG. 5C

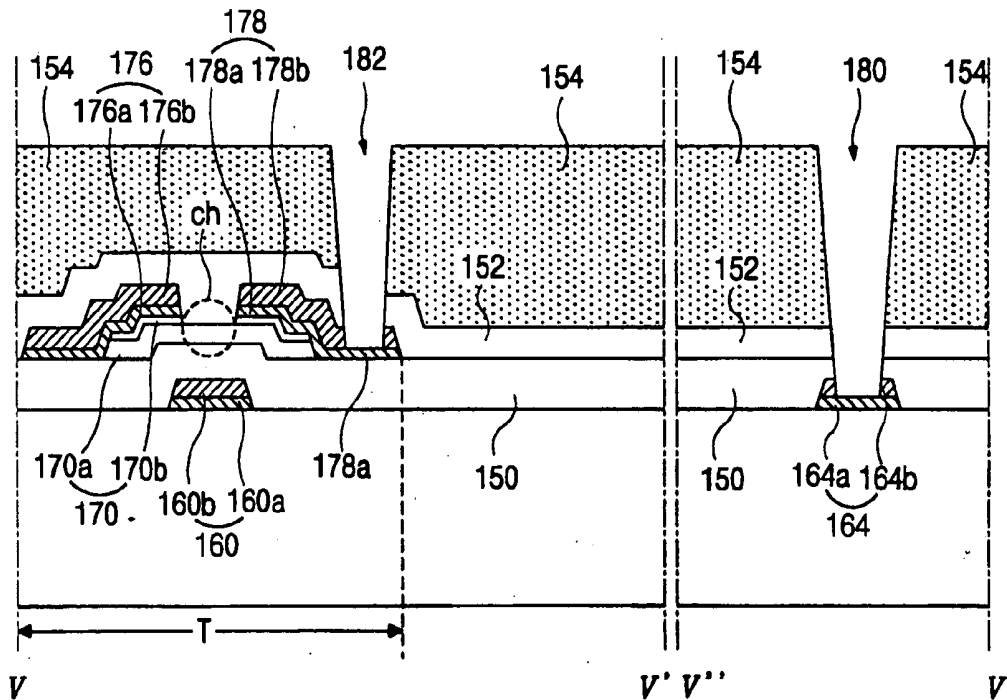


FIG. 5D

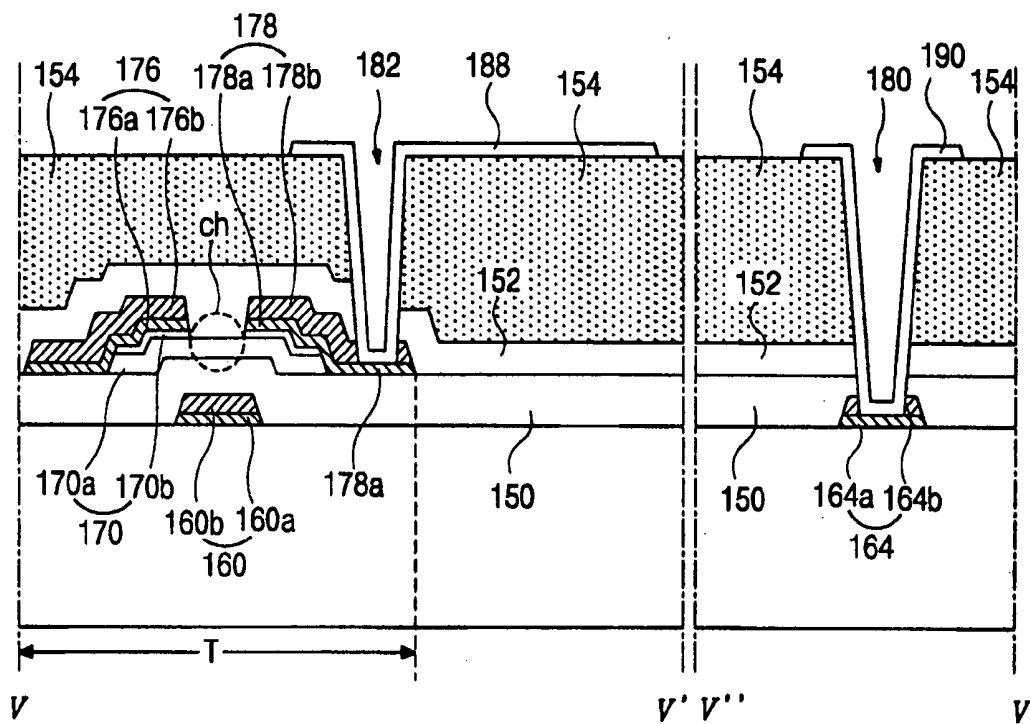


FIG. 5E

ARRAY SUBSTRATE FOR A LIQUID CRYSTAL DISPLAY DEVICE HAVING AN IMPROVED CONTACT PROPERTY AND FABRICATING METHOD THEREOF

[0001] This application claims the benefit of Korean Patent Application No. 2001-86429, filed on Dec. 27, 2001, which is hereby incorporated by reference for all purposes as if fully set forth herein.

BACKGROUND OF THE INVENTION

[0002] 1. Field of the Invention

[0003] The present invention relates to a liquid crystal display (LCD) device, and more particularly to an array substrate for an LCD device having an improved contact property.

[0004] 2. Discussion of the Related Art

[0005] LCD devices are developed as next generation display devices because of their lightweight, thin profile, and low power consumption characteristics. In general, an LCD device is a non-emissive display device that displays images using a refractive index difference having optical anisotropy properties of liquid crystal material that is interposed between a thin film transistor (TFT) array substrate and a color filter (C/F) substrate. Presently, among the various type of LCD devices commonly used, active matrix LCD (AM-LCD) devices have been developed because of their high resolution and superiority in displaying moving images. The AM-LCD device includes a TFT per each pixel region as a switching device, a first electrode for ON/OFF, and a second electrode used for a common electrode.

[0006] LCD devices can obtain a higher reliability and a stronger competitive power in price by selecting a metal of low resistivity and a strong corrosion resistance as a material for a metal line delivering a signal. Aluminum (Al) or Al alloy is widely used as the material for the metal line. However, as LCD devices become larger and a resolution of LCD devices becomes higher such as SVGA (Super Video Graphics Adapter), XGA (Extended Graphics Adapter), SXGA (Super Extended Graphics Adapter) and UXGA (Ultra Extended Graphics Adapter), a scanning time becomes shorter and a signal-treating speed becomes higher. To satisfy these needs, a metallic material of low resistance is selected as the material for the metal line. Accordingly, copper (Cu), which has a lower resistivity and a higher resistance to electromigration property than a conventional material is suggested for the metal line. However, since Cu has a poor adhesion to a glass substrate and a high diffusivity into a silicon material (e.g., insulating layer or semiconductor layer) under a relatively low temperature (about 200° C.), Cu cannot be used as the single material for the metal line.

[0007] To solve these problems, when a Cu line is selected as gate and data lines for an LCD device, a structure is suggested where an additional barrier layer is interposed between the glass substrate and the gate line, and between the semiconductor layer and the data line. The barrier layer improves an adhesion of the Cu line to the glass substrate and prevents a diffusion of Cu into the semiconductor layer. LCD devices having an improved aperture ratio and an improved display quality are briskly researched and developed by applying a Cu line including a barrier layer to an LCD device having an organic insulating layer of a low

dielectric constant. For example, titanium (Ti) is used as a metallic material for the barrier layer.

[0008] In FIG. 1, a gate line 62 and a data line 74 cross each other and a thin film transistor (TFT) "T" is disposed at a crossing of the gate and data lines 62 and 74. A pixel region is defined by the gate and data lines 62 and 74 and a pixel electrode 88 at the pixel region is connected to the TFT "T." Here, the pixel electrode 88 partially overlaps the gate and data lines 62 and 74. A passivation layer (not shown) of a low dielectric constant is interposed between the pixel electrode 88 and the data line 74 to prevent an electric interference therebetween. A gate pad 64 and a data pad 73 are disposed at one end of the gate line 62 and the data line 73, respectively. A gate pad terminal 90 and a data pad terminal 92 of the same material as the pixel electrode 88 are formed on the gate pad 64 and a data pad 73, respectively. Indium-tin-oxide (ITO) or indium-zinc-oxide (IZO) is mainly used as the material for the pixel electrode 88, the gate and data pad terminals 90 and 92. The gate and data lines 62 and 74 have a double-layered structure of an upper intrinsic copper layer and a lower barrier layer such as Cu/Ti. Each copper layer including the barrier layer of the TFT "T" and the gate and data pads 64 and 73 is connected to respective ITO electrode of the pixel electrode 88, the gate and data pad terminals 90 and 92 through respective a drain contact hole 80, and gate and data pad contact holes 82 and 84.

[0009] FIGS. 2A to 2D are schematic cross-sectional views, which are taken along a line II-II of FIG. 1, showing a fabricating process of an array substrate for an LCD device of a high aperture ratio using a Cu line including a barrier layer of the related art.

[0010] In FIG. 2A, first and second passivation layers 52 and 54 are formed over a TFT "T" and a gate pad 64. Here, a gate insulating layer 50, the first and second passivation layers 52 and 54 are sequentially formed on the gate pad 64. The TFT "T" includes a gate electrode 60, a semiconductor layer 70, source and drain electrodes 76 and 78. The gate insulating layer 50 and the first passivation layer 52 are made of silicon nitride (SiNx), and the second passivation layer 54 is made of an organic insulating material having a low dielectric constant. Generally, the gate insulating layer 50 and the first passivation layer 52 are formed by using a deposition apparatus such as a chemical vapor deposition (CVD) apparatus, and the second passivation layer 54 is formed by using a coating apparatus such as a spinner.

[0011] FIG. 2B, first and second open holes 80a and 82b respectively corresponding to the gate pad 64 and the drain electrode 78 are formed in the second passivation layer 54. For example, when the second passivation layer 54 is made of a photosensitive organic insulating material, the first and second open holes 80a and 82b are formed through a photolithography process including an exposure, a development and a curing.

[0012] In FIG. 2C, a gate pad contact hole 80 exposing the gate pad 64 and a drain contact hole 82 exposing the drain electrode 78 are formed through dry-etching a insulating material corresponding to the first and second open holes 80a and 82b (of FIG. 2B). In detail, the gate pad contact hole 80 is formed through the first and second passivation layers 52 and 54, and a gate insulating layer 50, and the drain contact hole 82 is formed through the first and second

passivation layers **52** and **54**. Here, after a substrate having the first and second open holes **80a** and **82b** is loaded in a vacuum chamber and a reaction gas such as SH_6 and CH_4 (methane) is injected into the vacuum chamber, plasma is generated in the vacuum chamber under a specific pressure. Thus, the insulating material corresponding to the first and second open holes **80a** and **82b** (of **FIG. 2B**) is etched through a bombardment or a chemical reaction between the ionized reaction gas and a thin film of the insulating material.

[0013] In **FIG. 2D**, a gate pad terminal **90** and a pixel electrode **88** of a transparent conductive material are formed on the second passivation layer **54**. The gate pad terminal **90** is connected to the gate pad **64** through the gate pad contact hole **80**, and the pixel electrode **88** is connected to the drain electrode **78** through the drain contact hole **82**.

[0014] **FIG. 3** is a schematic cross-sectional view showing an inferior contact hole of an array substrate for an LCD device of a high aperture ratio using a Cu line including a barrier layer of the related art.

[0015] In **FIG. 3**, a metal line **10** includes a first metal layer **10a** as a barrier layer and a second metal layer **10b** of a Cu layer on the first layer **10a**. A first passivation layer **12** of silicon insulating material and a second passivation layer **14** of an organic insulating material are sequentially formed on the metal line **10**. The first and second passivation layers **12** and **14** have a contact hole **16** exposing the metal line **10**. During a dry-etching process for the contact hole **16** in the first and second passivation layers **12** and **14**, an organic material of the second passivation layer **14** loses its moisture due to a reaction with plasma to be an organic residue **15** on the second metal layer **10b**. The organic residue **15** is seldom eliminated through a following cleaning process and causes a inferior contact property between an ITO layer and the Cu layer during a forming process of pad terminals and a pixel electrode of ITO. As a result, the organic residue **15** interferes an electric connection between the ITO layer and the Cu layer to cause an inferiority of electric signal input.

SUMMARY OF THE INVENTION

[0016] Accordingly, the present invention is directed to a liquid crystal display device that substantially obviates one or more of problems due to limitations and disadvantages of the related art.

[0017] An advantage of the present invention is to provide an array substrate for a liquid crystal display device having an improved contact property and fabricating method thereof.

[0018] An advantage of the present invention is to improve electric characteristics of a liquid crystal display device.

[0019] An advantage of the present invention is to provide an array substrate for a liquid crystal display device of a high aperture ratio using a copper line including a barrier layer where an inferior contact property due to an organic residue during a contact hole process is improved and electric characteristics increase through an effective combination of an organic insulating layer for high aperture ratio and a copper layer of low resistance.

[0020] Another advantage of the present invention is to provide an array substrate for a liquid crystal display device

of a high aperture ratio using a copper line including a barrier layer where an upper copper layer is eliminated during a contact hole process and a lower barrier layer is electrically connected to an ITO layer.

[0021] Additional features and advantages of the invention will be set forth in the description that follows, and in part will be apparent from the description, or may be learned by practice of the invention. Other advantages of the invention will be realized and attained by the structure particularly pointed out in the written description and claims hereof as well as the appended drawings.

[0022] To achieve these and other advantages and in accordance with the purpose of the present invention, as embodied and broadly described, an array substrate for a liquid crystal display device includes: a substrate; a gate electrode on the substrate; a gate insulating layer on the gate electrode; a semiconductor layer on the gate insulating layer; source and drain electrodes on the semiconductor layer, the source and drain electrodes including a copper layer as an upper layer and a barrier layer as a lower layer; a first passivation layer on the source and drain electrodes; a second passivation layer on the first passivation layer, the second passivation layer having a drain contact hole through the first passivation layer, the drain contact hole exposing the barrier layer; and a pixel electrode connected to the barrier layer through the drain contact hole.

[0023] In another aspect of the present invention, a fabricating method of an array substrate for a liquid crystal display device includes: forming a gate electrode on a substrate; depositing a gate insulating layer on the gate electrode; forming a semiconductor layer on the gate insulating layer; forming source and drain electrodes on the semiconductor layer, the source and drain electrodes including a copper layer as an upper layer and a barrier layer as a lower layer; depositing a first passivation layer on the source and drain electrodes; depositing a second passivation layer on the first passivation layer; etching the first and second passivation layers to form a drain contact hole exposing the drain electrode; etching the copper layer of the drain electrode corresponding to the drain contact hole to expose the barrier layer; and forming a pixel electrode connected to the barrier layer through the drain contact hole.

[0024] It is to be understood that both the foregoing general description and the following detailed description are exemplary and explanatory and are intended to provide further explanation of the invention as claimed.

BRIEF DESCRIPTION OF THE DRAWINGS

[0025] The accompanying drawings, which are included herewith to provide a further understanding of the invention and are incorporated in and constitute a part of this specification, illustrate embodiments of the invention and together with the description serve to explain the principle of the invention.

[0026] In the drawings:

[0027] **FIG. 1** is a schematic plan view showing an array substrate for an LCD device of a high aperture ratio using a copper line including a barrier layer of the related art;

[0028] **FIGS. 2A to 2D** are schematic cross-sectional views, which are taken along a line II-II of **FIG. 1**, showing

a fabricating process of an array substrate for an LCD device of a high aperture ratio using a Cu line including a barrier layer of the related art;

[0029] FIG. 3 is a schematic cross-sectional view showing an inferior contact hole of an array substrate for an LCD device of a high aperture ratio using a Cu line including a barrier layer of the related art;

[0030] FIG. 4 is a schematic plan view of an array substrate for a liquid crystal display device according to an exemplary embodiment of the present invention; and

[0031] FIGS. 5A to 5E are schematic cross-sectional views illustrating a fabricating process of an array substrate for an LCD device according to an exemplary embodiment of the present invention.

DETAILED DESCRIPTION OF THE ILLUSTRATED EMBODIMENTS

[0032] Reference will now be made in detail to the illustrated embodiments of the present invention, examples of which are illustrated in the accompanying drawings. Wherever possible, similar reference numbers will be used throughout the drawings to refer to the same or like parts.

[0033] FIG. 4 is a schematic plan view of an array substrate for a liquid crystal display device according to an exemplary embodiment of the present invention.

[0034] In FIG. 4, a gate line 162 and a data line 174 crossing each other are formed on a substrate (not shown). A thin film transistor "T" including a gate electrode 160, an active layer 170, and source and drain electrodes 176 and 178 is formed at a crossing point of the gate and data lines 162 and 174. A gate pad 164 and a data pad 173 are formed at ends of the gate and data lines 162 and 174, respectively. The gate and data lines 162 and 174 have a double-layered structure of a copper layer as an upper layer and a barrier layer as a lower layer. The barrier layer includes a material having a good adhesion to a glass substrate and a good chemical resistance, for example, a titanium (Ti), molybdenum (Mo), chromium (Cr) or indium (In). An insulating layer (not shown) covering the drain electrode 178, the gate pad 164 and the data pad 173 has a drain contact hole 180, a gate pad contact hole 182 and a data pad contact hole 184. The drain contact hole 180, the gate pad contact hole 182 and the data pad contact hole 184 expose the barrier layers of the drain electrode 178, the gate pad 164 and the data pad 173, respectively. Accordingly, a pixel electrode 188, a gate pad terminal 190 and a data pad terminal 192 are connected to the barrier layers of the drain electrode 178, the gate pad 164 and the data pad 173 through the drain contact hole 180, the gate pad contact hole 182 and the data pad contact hole 184, respectively. The insulating layer between the data line 174 and the pixel electrode 188 has a low dielectric constant to prevent an electric interference between metallic materials.

[0035] In the above structure, an organic residue resulting from a contact hole forming process of an LCD device that uses a copper line including a related art barrier layer is eliminated through an etching process of a copper layer. Moreover, since an indium-tin-oxide (ITO) electrode of a pixel electrode, a gate pad terminal and a data pad terminal is connected to a barrier layer and a side of a copper layer of a drain electrode, a gate pad and a data pad, a poor electric connection is prevented.

[0036] FIGS. 5A to 5E are schematic cross-sectional views illustrating a fabricating process of an array substrate for an LCD device according to an exemplary embodiment of the present invention. For the purposes of explanation, FIGS. 5A to 5E are taken along the line V-V of FIG. 4.

[0037] In FIG. 5A, a gate electrode 160 and a gate pad 164 are formed on a substrate 100. Next, a gate insulating layer 150 is formed on the gate electrode 160 and the gate pad 164. A semiconductor layer 170 including an active layer 170a and an ohmic contact layer 170b is formed on the gate insulating layer 150 over the gate electrode 160. After source and drain electrodes 176 and 178 spaced apart from each other are formed on the semiconductor layer 170, a channel "ch" of the active layer 170b is formed through etching the ohmic contact layer 170b between the source and drain electrodes 176 and 178. Thus, a thin film transistor (TFT) "T" including the gate electrode 160, the semiconductor layer 170, and the source and drain electrodes 176 and 178 is completed. Next, first and second passivation layers 152 and 154 are sequentially formed on the gate pad 164 and the TFT "T." Here, the gate pad 164, the gate electrode 160, and the source and drain electrodes 176 and 178 have a double-layered structure of a copper layer as an upper layer and a barrier layer as a lower layer. Each barrier layer 164a, 160a, and 176a and 178a of the gate pad 164, the gate electrode 160, and the source and drain electrodes 176 and 178 includes a metallic material such as titanium (Ti) and molybdenum (Mo), while each copper layer 164b, 160b, 176b and 178b of the gate pad 164, the gate electrode 160, and the source and drain electrodes 176 and 178 includes intrinsic copper. The gate insulating layer 150 and the first passivation layer 152 include an inorganic insulating material such as a silicon insulating material, preferably, a silicon nitride (SiNx). The second passivation layer 154 includes one of organic and inorganic insulating materials such as silicon nitride (SiNx) and silicon oxide (SiO₂). Preferably, the second passivation layer 154 includes an organic insulating material of low dielectric constant less than about 3 ($\epsilon < 3$).

[0038] In FIG. 5B, first and second open holes 180a and 182a are formed in the second passivation layer 154. The first and second open holes 180a and 182a correspond to the gate pad 164 and the drain electrode 178, respectively. If the second passivation layer 154 is made of a photosensitive organic insulating material such as photo acryl, the first and second open holes 180a and 182a can be formed through an exposure, a development and a hardening of the second passivation layer 154.

[0039] In FIG. 5C, a gate pad contact hole 180 and a drain contact hole 182 corresponding to the first and second open holes 180a and 182a (of FIG. 5B) are formed. The gate pad contact hole 180 and the drain contact hole 182 expose the gate pad 164 and the drain electrode 178, respectively. In detail, the gate pad contact hole 180 is formed through etching, preferably, dry-etching the first passivation layer 152 and the gate insulating layer 150 corresponding to the first open hole 180a (of FIG. 5B). Moreover, the drain contact hole 182 is formed through etching, preferably, dry-etching the first passivation layer 152 corresponding to

the second open hole **182a** (of FIG. 5B). Here, copper layers **164b** and **178b** of the gate pad **164** and the drain electrode **178** are exposed through the gate pad contact hole **180** and the drain contact hole **182**, respectively. However, if the second passivation layer **154** includes an organic insulating material that is not photosensitive, the gate pad contact hole **180** and the drain contact hole **182** can be formed through a single etching process, preferably, a single dry-etching process without an additional process for open holes.

[0040] In FIG. 5D, the copper layers **164b** and **178b** of the gate pad **164** and the drain electrode **178** exposed through the gate pad contact hole **180** and the drain contact hole **182** are etched, and the barrier layers **164a** and **178a** of the gate pad **164** and the drain electrode **178** are exposed. Preferably, the copper layers **164b** and **178b** are eliminated by a wet-etching method. A compound of hydrogen peroxide (H_2O_2) and acetic acid (CH_3COOH) may be used as an etchant for wet-etching the copper layers **164b** and **178b**. Here, an organic residue (not shown) on the copper layers **164b** and **178b**, which results from a forming process of the gate pad contact hole **180** and the drain contact hole **182**, are also eliminated during etching the copper layers **164b** and **178b**. Since the copper layers **164b** and **178b** having the organic residue thereon is etched, the organic residue also can be eliminated through the wet-etching process of the copper layers **164b** and **178b**. Accordingly, a gate pad terminal **190** (of FIG. 5E) and a pixel electrode **188** (of FIG. 5E) are substantially connected to the barrier layers **164a** and **178a** in the following process, and a problem of a poor electric contact due to an organic residue can be solved.

[0041] In FIG. 5E, a gate pad terminal **190** and a pixel electrode **188** are formed on the second passivation layer **154**. The gate pad terminal **190** is connected to the copper layer **164a** of the gate pad **164** through the gate pad contact hole **180**, and the pixel electrode **188** is connected to the copper layer **178a** of the drain electrode **178** through the drain contact hole **182**. Moreover, the gate pad terminal **190** and the pixel electrode **188** are connected to a sidewall of the copper layers **164b** and **178b**. Here, the gate pad terminal **190** and the pixel electrode **188** include a transparent conductive material such as indium-tin-oxide (ITO) and indium-zinc-oxide (IZO).

[0042] Consequently, since an organic insulating material for high aperture ratio and a copper line for low resistance are effectively used in the present invention without a problem of a poor electric contact, a liquid crystal display device of high aperture ratio, large area and high display quality can be provided.

[0043] It will be apparent to those skilled in the art that various modifications and variations can be made in the method of manufacturing a flat panel display device of the present invention without departing from the spirit or scope of the invention. Thus, it is intended that the present invention cover the modifications and variations of this invention provided they come within the scope of the appended claims and their equivalents.

1. An array substrate for a liquid crystal display device, comprising:

a substrate;

a gate electrode on the substrate;

a gate insulating layer on the gate electrode;

a semiconductor layer on the gate insulating layer;

source and drain electrodes on the semiconductor layer, the source and drain electrodes including a copper layer as an upper layer and a barrier layer as a lower layer;

a first passivation layer on the source and drain electrodes;

a second passivation layer on the first passivation layer, the second passivation layer having a drain contact hole through the first passivation layer, the drain contact hole exposing the barrier layer; and

a pixel electrode connected to the barrier layer through the drain contact hole.

2. The substrate according to claim 1, wherein the gate electrode has the same material as the source and drain electrodes.

3. The substrate according to claim 2, further comprising a gate line connected to the gate electrode, a data line crossing the gate line, a gate pad at one end of the gate line and a data pad at one end of the data line.

4. The substrate according to claim 3, wherein the first and second passivation layers have a gate pad contact hole and a data pad contact hole corresponding to the gate pad and the data pad, the gate pad contact hole and the data pad contact hole exposing the respective barrier layer of the gate pad and data pad.

5. The substrate according to claim 4, wherein the gate insulating layer is interposed between the gate pad and the first passivation layer.

6. The substrate according to claim 5, wherein the first and second passivation layer has the gate pad contact hole through the gate insulating layer.

7. The substrate according to claim 1, wherein the barrier layer includes one of titanium (Ti), molybdenum (Mo), chromium (Cr) and indium (In).

8. The substrate according to claim 1, wherein the first insulating layer includes an inorganic insulating material.

9. The substrate according to claim 8, wherein the inorganic insulating material includes one of silicon nitride (SiN_x) and silicon oxide (SiO_2).

10. The substrate according to claim 1, wherein the second passivation layer includes an organic insulating material.

11. The substrate according to claim 10, wherein the organic insulating material has a dielectric constant less than about 3.

12. The substrate according to claim 10, wherein the organic insulating material is photosensitive.

13-20. (Cancelled)

专利名称(译)	用于具有改善的接触特性的液晶显示装置的阵列基板及其制造方法		
公开(公告)号	US20050041170A1	公开(公告)日	2005-02-24
申请号	US10/942951	申请日	2004-09-17
[标]申请(专利权)人(译)	CHAE GEE SUNG		
申请(专利权)人(译)	CHAE GEE SUNG		
当前申请(专利权)人(译)	LG DISPLAY CO. , LTD.		
[标]发明人	CHAE GEE SUNG		
发明人	CHAE, GEE SUNG		
IPC分类号	G02F1/1333 G02F1/1362 H01L21/336 H01L21/77 H01L21/84 H01L27/12 H01L29/45 H01L29/49 G02F1/136		
CPC分类号	G02F1/13458 G02F1/136227 G02F2001/13629 G02F2001/136295 H01L27/124 H01L29/458 H01L29/4908 H01L29/66765 H01L27/12		
优先权	1020010086429 2001-12-27 KR		
其他公开文献	US7061020		
外部链接	Espacenet USPTO		

摘要(译)

一种液晶显示装置用阵列基板，包括：基板；基板上的栅电极；栅电极上的栅极绝缘层；栅极绝缘层上的半导体层；半导体层上的源电极和漏电极，源电极和漏电极包括作为上层的铜层和作为下层的阻挡层；源极和漏极上的第一钝化层；第一钝化层上的第二钝化层，第二钝化层具有穿过第一钝化层的漏极接触孔，漏极接触孔暴露出阻挡层；像素电极通过漏极接触孔连接到阻挡层。

