

US006768528B1

(12) **United States Patent**
Kwon et al.

(10) **Patent No.:** **US 6,768,528 B1**
(45) **Date of Patent:** **Jul. 27, 2004**

(54) **LIQUID CRYSTAL DISPLAY HAVING HIGH BRIGHTNESS AND ENHANCED VIEWING ANGLE**

6,198,520 B1 * 3/2001 Kondo et al. 349/141
6,295,108 B1 * 9/2001 Kaneko 349/115

* cited by examiner

(75) Inventors: **Young-Wan Kwon**, Seoul (KR);
Jong-Weon Moon, Seoul (KR)

Primary Examiner—Tarifur R. Chowdhury

Assistant Examiner—Thoi V. Duong

(73) Assignee: **LG.Philips LCD Co., Ltd.**, Seoul (KR)

(74) *Attorney, Agent, or Firm*—Birch, Stewart, Kolasch & Birch, LLP

(*) Notice: Subject to any disclaimer, the term of this patent is extended or adjusted under 35 U.S.C. 154(b) by 88 days.

(57) **ABSTRACT**

A liquid crystal display (LCD) realizes a high brightness by using cholesteric liquid crystal (CLC) in a color filter and a polarizer, and improves viewing angles by using a hologram diffuser. The LCD includes a back light unit to produce and supply light, and a collimating sheet to collimate the light supplied by the back light unit. A CLC polarizer transmits left-circularly polarized light from the collimating sheet, and reflects other light. A lower substrate is disposed above the CLC polarizer, and an upper substrate is disposed above the lower substrate and includes a holographic diffuser which diffuses light without altering a polarization of the light. A liquid crystal layer is disposed between the lower substrate and the upper substrate, and a color filter layer which transmits only predetermined wavelengths of light is also disposed between the lower substrate and the upper substrate. An upper linear polarizer is located above the upper substrate. Accordingly, the LCD provides enhanced viewing angles via the holographic diffuser. Also, the LCD realizes high brightness via the CLC diffuser and a CLC color filter layer.

(21) Appl. No.: **09/704,745**

(22) Filed: **Nov. 3, 2000**

(30) **Foreign Application Priority Data**

Nov. 5, 1999 (KR) 1999-48743

(51) **Int. Cl.**⁷ **G02F 1/1335**

(52) **U.S. Cl.** **349/112**

(58) **Field of Search** 349/112, 106,
349/96, 95, 117, 98, 65, 115, 100

(56) **References Cited**

U.S. PATENT DOCUMENTS

5,418,631 A * 5/1995 Tedesco 359/15
5,629,784 A * 5/1997 Abileah et al. 349/112
5,822,029 A * 10/1998 Davis et al. 349/115
5,841,494 A * 11/1998 Hall 349/98
5,963,284 A * 10/1999 Jones et al. 349/112
6,144,430 A * 11/2000 Kuo 349/113

4 Claims, 3 Drawing Sheets

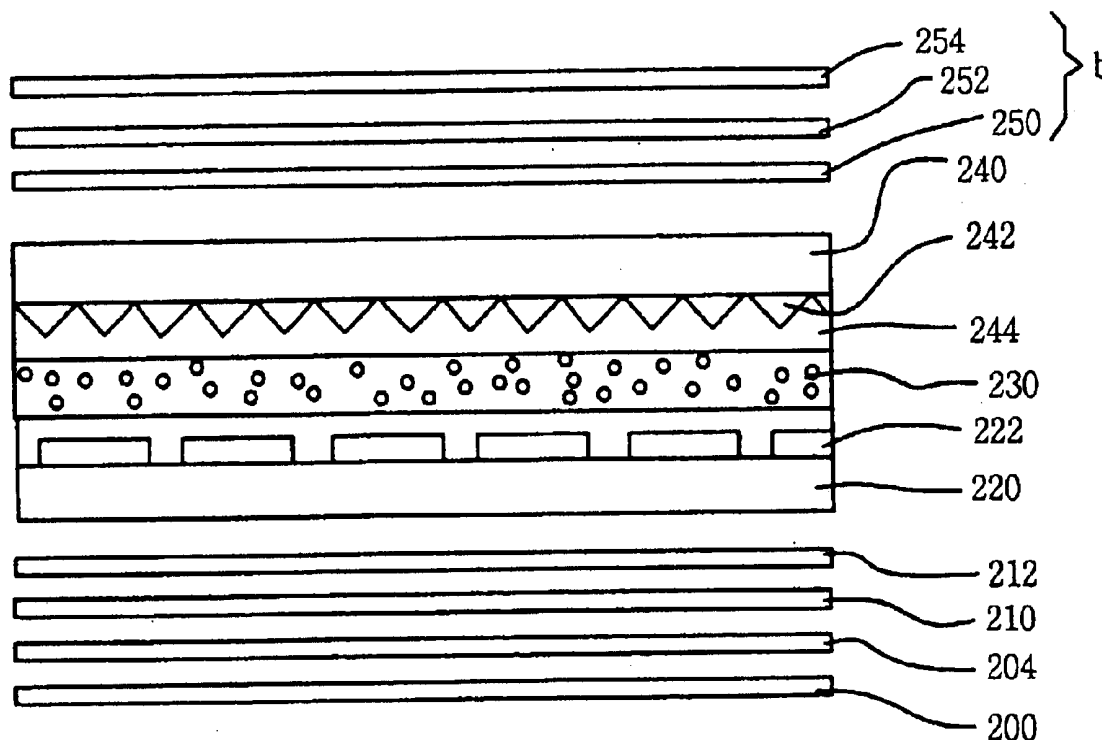


FIG. 1
RELATED ART

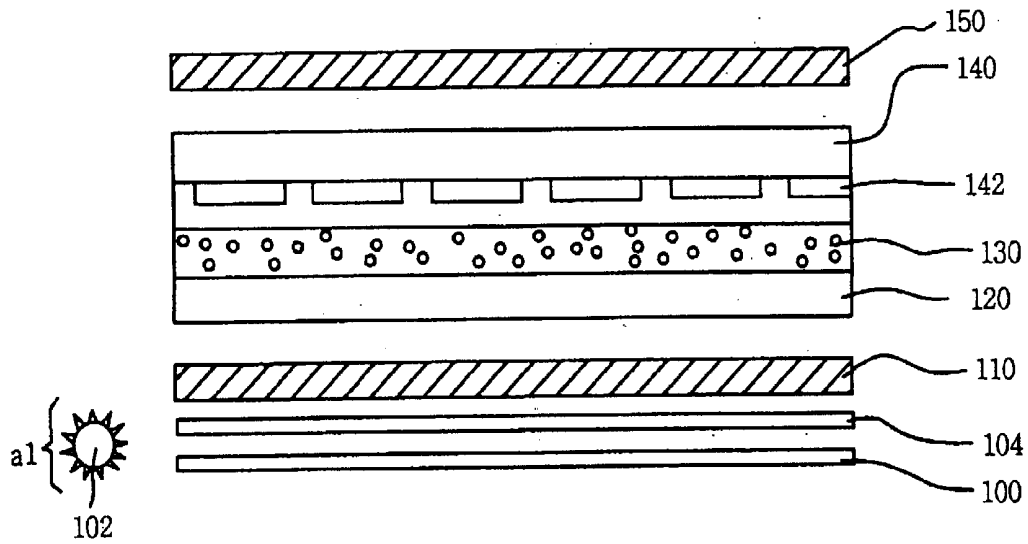


FIG. 2

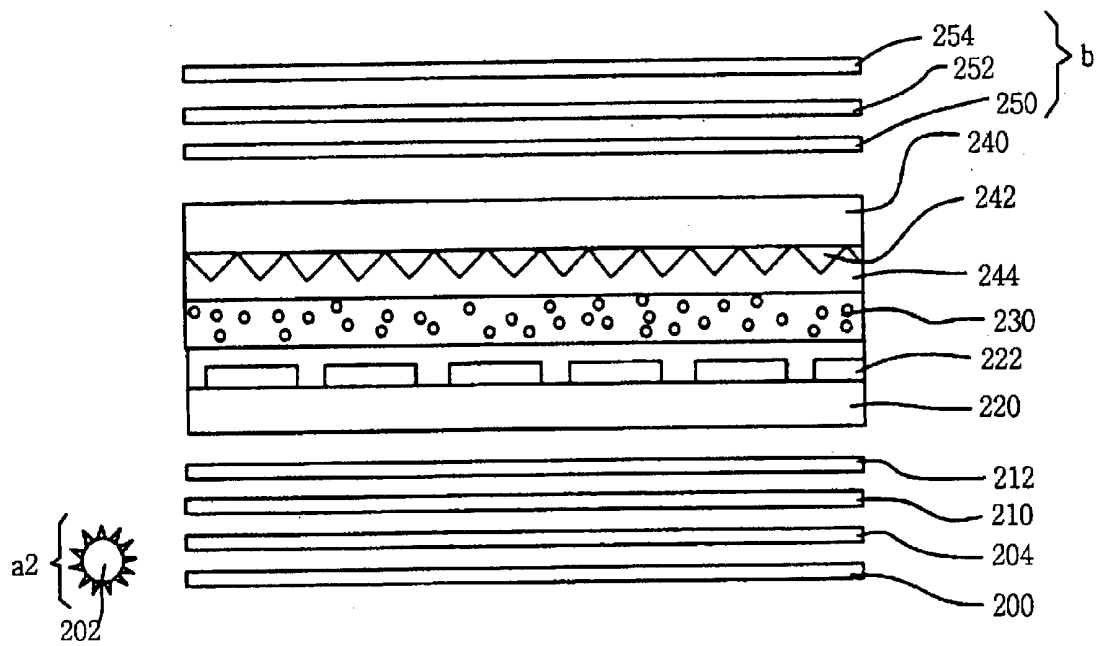


FIG. 3

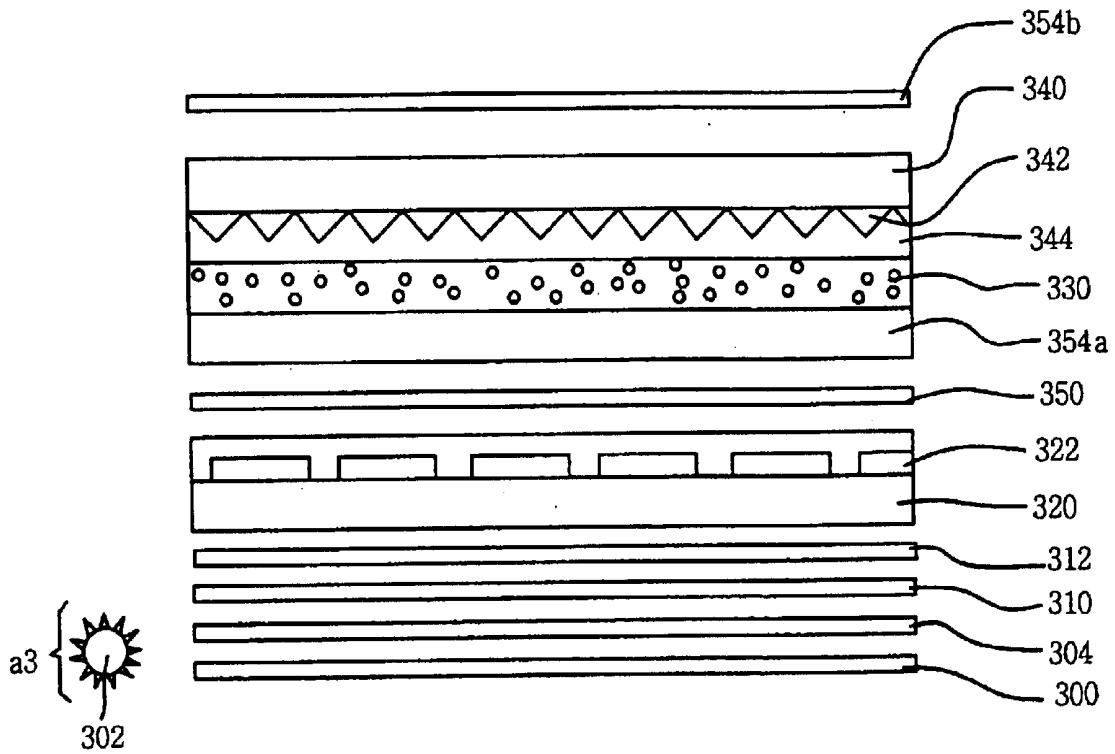


FIG. 4

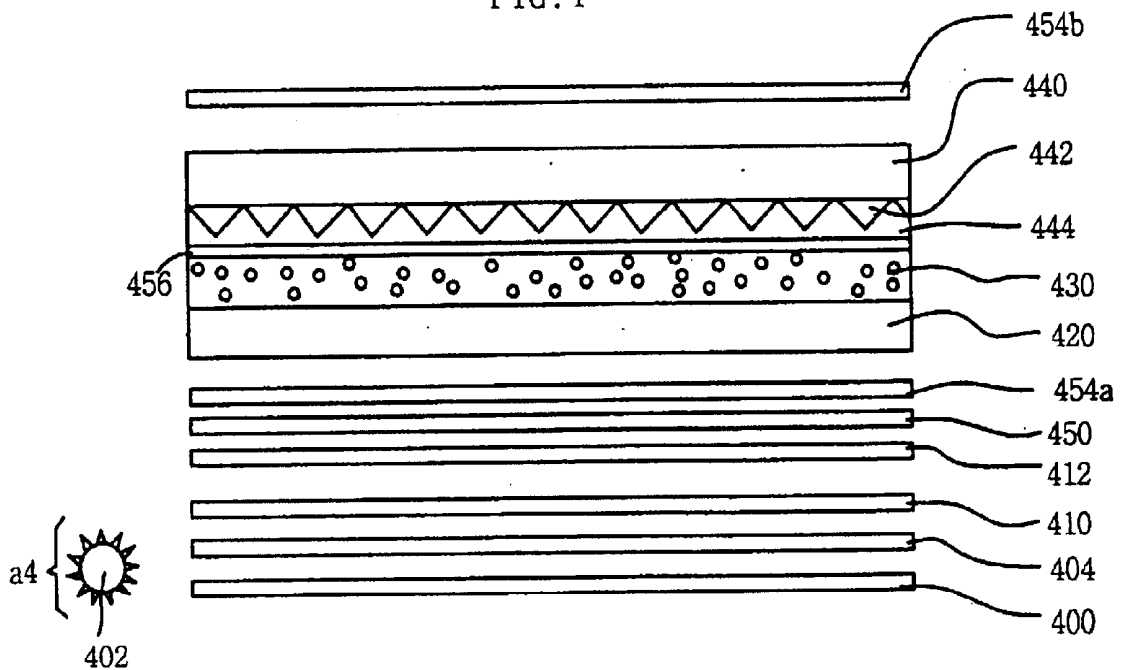
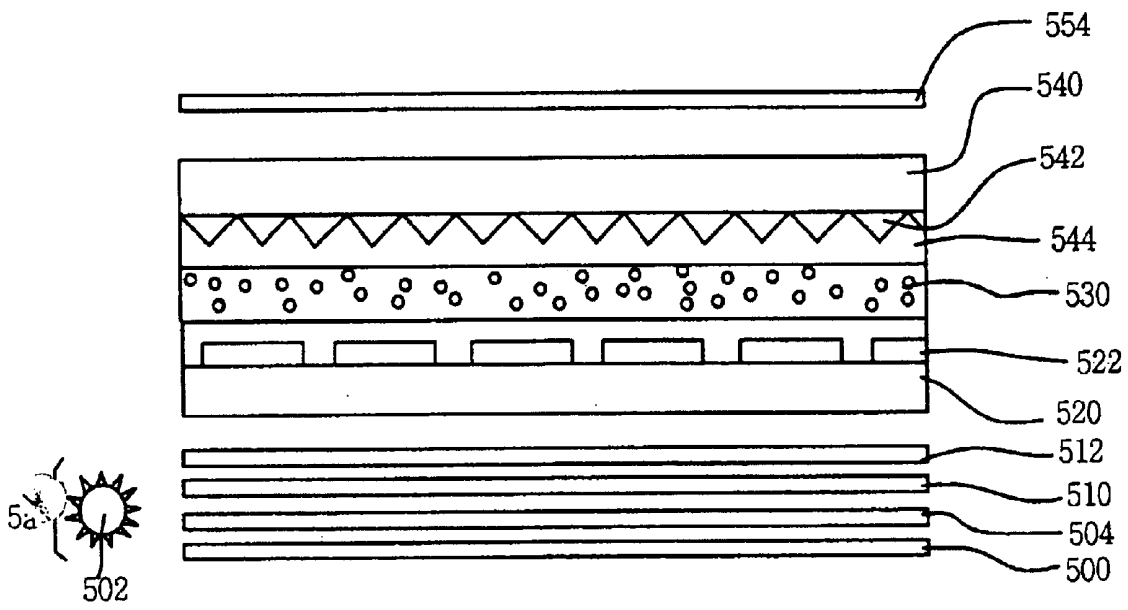


FIG. 5



LIQUID CRYSTAL DISPLAY HAVING HIGH BRIGHTNESS AND ENHANCED VIEWING ANGLE

BACKGROUND OF THE INVENTION

1. Field Of Invention

The present invention relates to a liquid crystal display (hereinafter abbreviated LCD) which realizes a high brightness and improves viewing angles.

2. Discussion Of Related Art

Lately, LCDs have been widely used as planarized plate displays. As techniques for fabricating thin film transistors using amorphous silicon are developed, the image quality of these LCDs is greatly improved. Thus, LCDs are widely used in notebook computers, personal computer monitors, and the like.

FIG. 1 shows a cross-sectional view of an LCD according to a related art. Referring to FIG. 1, the LCD includes a back light unit **a1** for generating and uniformly supplying light, and a lower polarizing plate **110** for transforming a polarization characteristic of the supplied light from the back light unit **a1** to a given direction. The LCD also includes a lower substrate **120** on which thin film transistors (not shown) are formed to control the transmissive rate of the light polarized by the lower polarizing plate **110**. A liquid crystal layer **130** changes a polarization direction of the light whose transmissive rate has been controlled by the lower substrate **120**. An upper substrate **140**, on which a color filter layer **142** is disposed, causes the polarized light to have a specific color wavelength matching a corresponding color filter. An upper polarizing plate **150** changes the polarization characteristic of the light having passed through the upper substrate **140**.

The back light unit **a1** is constructed with a light source **102** for generating light, and a light-guiding plate **104** for guiding the light generated from the light source **102** to a liquid crystal panel uniformly. A reflection plate **100** under the light-guiding panel **104** reflects incident light from the bottom or side of the light-guiding plate **104** toward the liquid crystal panel.

In the above-constructed related art LCD, the light generated from the light source **102** passes through the light-guiding plate **104**, and is uniformly polarized after passing through the lower polarizing plate **110**.

A polarizing direction of the light having been polarized through the lower polarizing plate **110** is changed at the thin film transistor (not shown) on the lower substrate **120** and the liquid crystal layer **130**. Namely, the polarization direction of the polarized light is selectively revolved according to a state of the transistor when passing through the liquid crystal layer **130**. Then, the changed light passes through the color filter layer **142** of the upper substrate **140**, which only transmits wavelengths of the specific colors corresponding to the respective color filters.

An image is realized when the light having a specific color transmitted by the color filter layer **142** proceeds to the upper polarizing plate **150**. The upper polarizing plate **150** only transmits the light whose polarized direction has been revolved by the liquid crystal. In this case, the polarizing characteristic of the upper polarizing plate **150** is perpendicular to that of the lower polarizing plate **110**.

Thus, the basic principle of the LCD is that the polarized direction of the light is revolved after the polarized light from the lower polarizing plate **110** passes through the liquid

crystal layer **130**. The length that the light travels in the liquid crystal is important. When the liquid crystal is placed between the upper and lower polarizing plates **150** and **110**, the thickness of the liquid crystal changes the polarized direction of the light according to the following formula.

$$(\Delta n)Z = \lambda/4 \quad (I)$$

wherein Δn is a difference of a refractive index between a perpendicular direction and a parallel direction of the proceeding direction of the light in double refraction, Z is a thickness of the liquid crystal, and λ is a wavelength of the light.

In this case, once the proceeding direction of the light is perpendicular to the liquid crystal layer, the proceeding length of the light becomes z to show the same result of the formula (I). Thus, the cut-off of the light by the vertical polarizing plate becomes very effective.

However, when the light proceeds at a slant (i.e., an acute angle to perpendicular), the proceeding (or path) length of the light becomes longer. Thus, the upper polarizing plate is unable to cut off the light precisely due to the change of the polarized direction of the light. Hence, the optimal way to achieve cut-off of polarized light is to improve the straightness (with respect to perpendicular) of the light passing through the liquid crystal.

Unfortunately, the LCD according to the related art limits the viewing angles of the LCD once the straightness of the light is elevated.

SUMMARY OF THE INVENTION

Accordingly, the present invention is directed to a liquid crystal display that substantially obviates one or more of the problems due to limitations and disadvantages of the related art.

Additional features and advantages of the invention will be set forth in the description which follows and in part will be apparent from the description, or may be learned by practice of the invention. The objectives and other advantages of the invention will be realized and attained by the structure particularly pointed out in the written description and claims hereof as well as the appended drawings.

To achieve these and other advantages and in accordance with the purpose of the present invention, as embodied and broadly described, in one aspect the present invention includes a back light unit to produce and supply light; a collimating sheet to collimate the light supplied by the back light unit; a cholesteric liquid crystal (CLC) polarizer to transmit one of left-circularly polarized light and right-circularly polarized light from the collimating sheet, and to reflect other light not transmitted; a lower substrate on which a CLC color filter layer is formed wherein the CLC color filter layer transmits the circularly polarized light from the CLC polarizer having specific red, green, and blue wavelengths and reflects other light not transmitted; a liquid crystal layer to selectively revolve a polarized direction of the circularly polarized light from the CLC color filter layer; an upper substrate over the liquid crystal layer having a hologram diffuser and a planarization layer disposed thereon and wherein the hologram diffuser diffuses the changed circularly polarized light from the liquid crystal layer; and a linear polarizing transformer to transform the diffused circularly polarized light from the hologram diffuser into linearly polarized light.

In another aspect, the present invention includes a back light unit to produce and supply light; a collimating sheet to collimate the light supplied by the back light unit; a cho-

lesteric liquid crystal (CLC) polarizer to transmit one of left-circularly polarized light and right-circularly polarized light from the collimating sheet, and to reflect other light not transmitted; a lower substrate on which a CLC color filter layer is formed wherein the CLC color filter layer transmits the circularly polarized light from the CLC polarizer having specific red, green, and blue wavelengths and reflects other light not transmitted; a $\lambda/4$ film to transform the circularly polarized light from the CLC color filter layer into linearly-polarized light; a first linear polarizer above the $\lambda/4$ film; a liquid crystal layer to selectively transmit the linearly-polarized light; and an upper substrate over the liquid crystal layer having a hologram diffuser and a planarization layer disposed thereon and wherein the hologram diffuser diffuses the linearly-polarized light from the liquid crystal layer.

In still another aspect, the present invention includes a back light unit to produce and supply light; a collimating sheet to collimate the light supplied by the back light unit; a cholesteric liquid crystal (CLC) polarizer to transmit one of left-circularly polarized light and right-circularly polarized light from the collimating sheet, and to reflect other light not transmitted; a $\lambda/4$ film to transform the circularly polarized light from the CLC polarizer into linearly-polarized light; a linear polarizer above the $\lambda/4$ film; a lower substrate above the linear polarizer; a liquid crystal layer above the lower substrate; and an upper substrate over the liquid crystal layer having a hologram diffuser, a planarization layer, and an absorbing type color filter layer disposed thereon and wherein the hologram diffuser diffuses the linearly-polarized light from the liquid crystal layer.

In a further aspect, the present invention includes a back light unit to produce and supply light; a collimating sheet to collimate the light supplied by the back light unit; a cholesteric liquid crystal (CLC) polarizer to transmit one of left-circularly polarized light and right-circularly polarized light from the collimating sheet, and to reflect other light not transmitted; a lower substrate on which a CLC color filter layer is disposed wherein the CLC polarizer transmits light from the CLC polarizer having specific red, green, and blue wavelengths and reflects other light not transmitted; a liquid crystal layer; and an upper substrate over the liquid crystal layer having a hologram diffuser, a planarization layer, and a linear polarizer disposed thereon and wherein the hologram diffuser diffuses light from the liquid crystal layer.

In yet a further aspect, the present invention includes a back light unit to produce and supply light; a collimating sheet to collimate the light supplied by the back light unit; a cholesteric liquid crystal (CLC) polarizer to transmit circularly polarized light of a predetermined direction from the collimating sheet, and to reflect other light not circularly polarized in the predetermined direction; a lower substrate above the CLC polarizer; an upper substrate above the lower substrate including a holographic diffuser disposed thereon and wherein the hologram diffuser diffuses light without altering a polarization of the light; a liquid crystal layer disposed between the lower substrate and the upper substrate; a color filter layer to transmit only predetermined wavelengths of light disposed between the lower substrate and the upper substrate; and an upper linear polarizer above the upper substrate.

An advantage of the present invention is that it provides a liquid crystal display with improved viewing angles.

It is to be understood that both the foregoing general description and the following detailed description are exemplary and explanatory and are intended to provide further explanation of the invention as claimed.

BRIEF DESCRIPTION OF THE ATTACHED DRAWINGS

The accompanying drawings, which are included to provide a further understanding of the invention and are incorporated in and constitute a part of this application, illustrate embodiments of the invention and together with the description serve to explain the principle of the invention.

In the drawings:

FIG. 1 shows a cross-sectional view of an LCD according to a related art;

FIG. 2 shows a cross-sectional view of an LCD according to a first embodiment of the present invention;

FIG. 3 shows a cross-sectional view of an LCD according to a second embodiment of the present invention;

FIG. 4 shows a cross-sectional view of an LCD according to a third embodiment of the present invention; and

FIG. 5 shows a cross-sectional view of an LCD according to a fourth embodiment of the present invention.

DETAILED DESCRIPTION OF PREFERRED EMBODIMENTS

Reference will now be made in detail to the preferred embodiments of the present invention, examples of which are illustrated in the accompanying drawings.

FIG. 2 shows a cross-sectional view of an LCD according to a first embodiment of the present invention. Referring to FIG. 2, the LCD includes a back light unit **a2** for producing and uniformly supplying light, and a collimating sheet **210** for collimating the light supplied from the back light unit **a2**. A cholesteric liquid crystal (hereinafter abbreviated CLC) polarizer **212** transmits or reflects a circular polarized light having a specific wavelength out of the light transmitted by the sheet **210**. The CLC polarizer **212** selectively transmits either a left-circular polarized light or a right-circular polarized light, and reflects that which is not transmitted. A lower substrate **220**, against which a CLC color filter layer **222** is formed, transmits the left-circular polarized light or the right-circular polarized light having a specific wavelength of red R, green G and blue B of the circular polarized lights having passed through the CLC polarizer **212**, and reflects the rest. A liquid crystal layer **230** selectively changes a polarized direction of the left-circular polarized light or the right-circular polarized light of the circular polarized lights transmitted by the CLC color filter layer **222**. An upper substrate **240**, on which a hologram diffuser **242** and a planarization layer **244** covering the hologram diffuser **242** are formed, diffuses the right-circular or left-circular polarized light that was revolved as it passed through the liquid crystal layer **230**. A linear polarizing transformer **b** transforms the left-circular or right-circular polarized light, which has been diffused through the hologram diffuser **242**, into a linearly-polarized light.

The back light unit **a2** is constituted by a light source **202** for producing a light, a light-guiding plate **204** for uniformly guiding the light generated from the light source **202** to a liquid crystal panel, and a reflection plate **200** for reflecting the light from the bottom or side of the light-guiding plate **204** toward the liquid crystal panel.

The linear polarizing transformer **b** is constituted by a $\lambda/4$ film (i.e., a quarter wave plate) **250** for transforming the left-circular or right-circular polarized light diffused through the hologram diffuser **242** into linearly-polarized light. A compensating film **252** optimizes the circular polarized light which fails to be transformed 100% into linearly-polarized light through the $\lambda/4$ film **250**, and a linear polarizer **254** polarizes the light passed by the compensating film **252**.

An imaging process of the first embodiment of the present invention will be explained in the following description. First, light generated by the light source **202** is supplied uniformly through the light-guiding plate **204** and is transmitted through the collimating sheet **210**. Any portion of the light failing to be transmitted into the collimating sheet **210** is reflected by the reflection plate **200** and then transmitted into the collimating sheet **210**.

The CLC polarizer **212** permits a specific light (i.e., left-circular or right-circular polarized light) having a corresponding wavelength out of the lights having been transmitted through the collimating sheet **210** to be selectively transmitted or reflected. Hereinafter, the first to fourth embodiments of the present invention will assume for simplicity of explanation (though another polarization could be used) that a left-circular polarized light is transmitted through the collimating sheet. In this case, recycling of the light is accomplished because the right-circular polarized light reflected by the CLC polarizer **212** is reflected by the reflection plate **200**, thereby changing its polarization to left-circular polarized light.

The left-circular polarized light transmitted through the CLC polarizer **212** passes through the CLC color filter layer **222** formed on the lower substrate **220**. Thus, polarized light having a specific wavelength which is one of R, G, and B is transmitted but the rest is reflected from the CLC color filter layer **222**.

The left-circular polarized light having a specific wavelength of a predetermined color transmitted by the CLC color filter layer **222** passes through the liquid crystal layer **230** which changes its polarization direction. Namely, the left-circular polarized light is transformed into a right-circular polarized light by the liquid crystal layer **230**.

Viewing angles are improved, because the right-circular polarized light transmitted by the liquid crystal layer **230** is diffused through the hologram diffuser **242** formed on the upper substrate **240**. The hologram diffuser keeps the polarization of the polarized light intact-despite diffusing the polarized light.

In general, an LCD using the CLC color filter layer **222** without the hologram diffuser **244** results in poor color image if the LCD is seen outside of a viewing angle about 20°. Yet, the first embodiment of the present invention compensates such poor viewing angle by using the hologram diffuser **242**, thereby enhancing the viewing angle for the display. And, the diffuser **242** is formed to be adjacent to the liquid crystal layer **230** in the first embodiment of the present invention, thereby enabling precisely diffused light.

The resultant right-circular polarized light having been diffused through the hologram diffuser **242** passes through the $\lambda/4$ film **250**, compensation film **252**, and linear polarizer **254** successively, thereby being transformed into a linearly-polarized light.

The first embodiment of the present invention enables improved image quality by installing the hologram diffuser **242** inside a liquid crystal cell to increase the viewing angle of the light which is reduced by the collimating sheet **210**. The first embodiment also realizes an LCD of high brightness by recycling light reflected by the CLC polarizer and the CLC color filter layer.

FIG. 3 shows a cross-sectional view of an LCD according to a second embodiment of the present invention. Referring to FIG. 3, the second embodiment of the present invention includes a back light unit **a3** producing and uniformly supplying light, and a collimating sheet **310** for collimating the light supplied from the back light unit **a3**. A CLC

polarizer **312** transmits left-circular polarized light having a specific wavelength out of the light transmitted by the collimating sheet **310**. The CLC polarizer reflects the rest of the light for recycling by reflection plate **300**. A lower substrate **320**, on which a CLC color filter layer **322** is formed, transmits the left-circular polarized light having a specific wavelength of R, G or B of the light transmitted by the polarizer **312** and reflects the rest. A $\lambda/4$ film **350** transforms the left-circular polarized light having passed through the CLC color filter layer **322** into linearly-polarized light. A first linear polarizer **354a** is disposed under a liquid crystal layer **330** for transmitting the linearly-polarized light. An upper substrate **340** on which a hologram diffuser **342** and a planarization layer **344** covering the hologram diffuser **342** are formed, where the hologram diffuser **342** diffuses the linearly-polarized light having passed through the liquid crystal layer **330**. A second linear polarizer **354b** is provided on the upper substrate **340**.

In the second embodiment of the present invention, light generated and supplied from the back light unit **a3** is collimated by the collimating sheet **310**. In the drawing, numerals **302**, **300** and **304** denote a light source, a reflection plate, and a light-guiding plate, respectively.

Only circularly polarized, e.g., left-circular polarized, light of the collimated light having a specific wavelength is transmitted through the CLC polarizer **312**. Also, left-circular polarized light having a specific wavelength of R, G or B passes through the CLC color filter layer **322** on the lower substrate **320**, but the rest is reflected. Then, the left-circular polarized light of the specific wavelength and having a predetermined color from the CLC color filter layer **322** passes through the $\lambda/4$ film **350** and the first linear polarizer **354a**, thereby being transformed into linearly-polarized light.

Accordingly, viewing angles are improved since the linearly-polarized light is diffused through the hologram diffuser **344** formed on the upper substrate **340**. Additionally, the diffused linearly-polarized light is transmitted through the second linear polarizer **354b**.

As shown in FIG. 3, the $\lambda/4$ film **350** and the first linear polarizer **354a** are formed over the CLC color filter layer **322** inside a cell. In this case, thickness of the $\lambda/4$ film **350** and first linear polarizer **354a** is about 150–200 μm , which is thicker than the liquid crystal layer **330** of 4–6 μm . Thus, the fabricating process may be difficult.

Therefore, the CLC color filter layer **322** is coated with a liquid crystal layer which may be hardened by a light (e.g., ultraviolet) to form the $\lambda/4$ film **350**. The liquid crystal layer is irradiated with the ultraviolet light to realize a thin and uniform film. Also, the $\lambda/4$ film **350** is coated with direct coating polarizer (DCP) to form the first linear polarizer **354a**.

Accordingly, the second embodiment of the present invention enables fabrication of a uniform and thin LCD by using the $\lambda/4$ film of a liquid crystal hardened by ultraviolet light and the first linear polarizer **354a** formed of a DCP.

Moreover, the second embodiment of the present invention enables realization of a high contrast by placing the $\lambda/4$ film **350** and first linear polarizer **354a** over the CLC color filter layer **322**, and a higher polarization degree than in the first embodiment of the present invention by using the light transmitted through the CLC polarizer and CLC color filter layer. Also, the second embodiment of the present invention improves the image quality by installing the hologram diffuser **342** inside a liquid crystal cell to increase the viewing angle.

FIG. 4 shows a cross-sectional view of an LCD according to a third embodiment of the present invention. Referring to FIG. 4, the third embodiment of the present invention includes a back light unit **a4** producing and uniformly supplying light, and a collimating sheet **410** for collimating the light supplied from the back light unit **a4**. A CLC polarizer **412** transmits a left-circular polarized light having a specific wavelength out of the light transmitted by the collimating sheet **410**. The CLC polarizer **412** reflects the rest of the light for recycling. $\lambda/4$ film **450** transforms the left-circular polarized light into linearly-polarized light. A first linear polarizer **454a** is located above the $\lambda/4$ film **450**. A lower substrate **420** which transmits the linearly-polarized light is disposed on the first linear polarizer **454a**. A liquid crystal layer **430** which is optically anisotropic is formed below an upper substrate **440** on which a hologram diffuser **442**, a planarization layer **444** and an absorbing type color filter layer **456** are formed. The hologram diffuser **442** diffuses the linearly-polarized light transmitted by the liquid crystal layer **430**, and a second linear polarizer **454b**.

In the third embodiment of the present invention, light generated and supplied from the back light unit **a4** is collimated by the collimating sheet **410**. Then, only circularly polarized, e.g., left-circular polarized, light having a specific wavelength of the collimated lights is transmitted through the CLC polarizer **412**.

Successively, the left-circular polarized light of the specific wavelength passes through the $\lambda/4$ film **450** and the first linear polarizer **454a**, thereby being transformed into linearly-polarized light. In the drawing, numerals **402**, **400** and **404** denote a light source, a reflection plate, and a light-guiding plate, respectively.

The linearly-polarized light passes through the liquid crystal layer **430** which changes its polarizing characteristic, and then through the absorbing type color filter layer **456**. The filtered light is diffused by the hologram diffuser **442** of the upper substrate **440**, and then is transmitted through the second linear polarizer **454b**.

The third embodiment of the present invention introduces an absorbing type color filter layer and provides wide viewing angles by spreading out the light collimated by the collimating sheet in use of the hologram diffuser for enhancing the viewing angles.

FIG. 5 shows a cross-sectional view of an LCD according to a fourth embodiment of the present invention. Referring to FIG. 5, the fourth embodiment of the present invention includes a back light unit **a5** for producing and uniformly supplying light, and a collimating sheet **510** for collimating the light supplied from the back light unit **a5**. A lower substrate **520** is disposed between a CLC polarizer **512** and a CLC color filter layer **522**. The CLC polarizer **512** transmits circularly polarized light (e.g., left-circular polarized light) having a specific wavelength among the light transmitted by the collimating sheet **510**. The polarizer **512** reflects the rest of the incident light for recycling the light. The CLC color filter **522** transmits the left-circular polarized light having a specific wavelength of red R, green G and blue B of the light transmitted by the polarizer **512** and reflects the rest. The liquid crystal layer **530** changes a polarized state of the transmitted light from CLC color filter layer **522**. A hologram diffuser **542** and a planarization layer **544** covering the hologram diffuser **542** are formed on an upper substrate **540**. The hologram diffuser **542** diffuses the right-circular or left-circular polarized light having been revolved by the liquid crystal layer **530**, and a linear polarizing transformer **554** transforms the left-circular or right-circular

polarized light which has been diffused through the hologram diffuser **542** into a linearly-polarized light.

In the fourth embodiment of the present invention, a travelling direction of the light generated and supplied from the back light unit **a5** is controlled to be parallel by the collimating sheet **510**. In the drawing, numerals **502**, **500** and **504** denote a light source, a reflection plate, and a light-guiding plate, respectively. Then, only circular polarized light (e.g., left-circular polarized) having a specific wavelength is transmitted by the CLC polarizer **512** but the rest is reflected therefrom.

Also, the transmitted left-circular polarized light, which has passed through the CLC polarizer **512** and which has a specific wavelength of R, G or B, passes through the CLC color filter layer **522**, but the rest is reflected. Then, the diffused left-circular polarized light passes through the linear polarizing transformer **554**, and is thereby transformed into a linearly-polarized light.

The CLC color filter layer **522** upon which a circular polarized light is to be incident is used in the fourth embodiment of the present invention. In general, a CLC color filter is fabricated by mixing CLC, nematic liquid crystal, photoinitiator and the like.

When the CLC color filter layer **522** is fabricated in the fourth embodiment of the present invention, a photoinitiator which reacts differently in accordance with the polarized states of a light, such as a mixture of dichromic photoinitiator, and UV absorber may be used. Dichromic acid photo initiator initiates this variable reaction and provides various results in accordance with different polarizing characteristics of the light.

Generally, double refraction barely exists in a CLC polarizer in the direction vertical to a spiral axis. When a CLC layer is fabricated by mixing dichromic photoinitiator, deformation of a helix is generated in a pitch of the CLC layer when a linearly polarized UV light is applied. Namely, double refraction exists in the direction vertical to the spiral axis.

Thus, the CLC color filter layer **522** enables the selective transmission of a specific wavelength of a circular polarized light, and satisfies the ' $\lambda/4$ ' relation by controlling the thickness of a layer with the above double refraction and by choosing a liquid crystal fit for the condition of dispersion of a refraction rate. Accordingly, the present invention enhances viewing angles by installing a hologram diffuser inside a cell of an LCD, provides a clean image, and is applicable to various modes free from polarized states.

Moreover, the present invention realizes an LCD of high brightness by inserting a CLC polarizer and a CLC color filter layer therein.

It will be apparent to those skilled in the art that various modifications and variations can be made in a liquid crystal display of the present invention without departing from the spirit or scope of the inventions. Thus, it is intended that the present invention cover the modifications and variations of this invention provided they come within the scope of the appended claims and equivalents.

What is claimed is:

1. A liquid crystal display usable with a back light source supplying light, comprising:
 - a cholesteric liquid crystal (CLC) polarizer to transmit one of left-circularly polarized light and right-circularly polarized light from the back light source, and to reflect other light not transmitted;
 - a lower substrate on which a CLC color filter layer is formed wherein the CLC color filter layer transmits the

9

circularly polarized light from the CLC polarizer having certain wavelengths and reflects other light not transmitted;

a liquid crystal layer to selectively revolve a polarized direction of the circularly polarized light from the CLC color filter layer;

an upper substrate over the liquid crystal layer and having a hologram diffuser wherein the hologram diffuser diffuses the revolved circularly polarized light from the liquid crystal layer; and

a linear polarizing transformer to transform the diffused circularly polarized light from the hologram diffuser into linearly polarized light,

wherein the hologram diffuser is positioned below the upper substrate.

2. The liquid crystal display according to claim **1**, wherein the linear polarizing transformer includes

10

a $\lambda/4$ film to transform the circularly polarized light into linearly-polarized light,

a compensating film over the $\lambda/4$ film, and

a linear polarizer over the compensating film.

3. The liquid crystal display according to claim **1**, further comprising:

a planarization layer disposed on the hologram diffuser to planarize the hologram diffuser.

4. The liquid crystal display according to claim **1**, further comprising:

a collimating member disposed below the lower substrate to collimate the light supplied by the back light source and direct it toward the CLC polarizer.

* * * * *

专利名称(译)	液晶显示器具有高亮度和增强的视角		
公开(公告)号	US6768528	公开(公告)日	2004-07-27
申请号	US09/704745	申请日	2000-11-03
[标]申请(专利权)人(译)	乐金显示有限公司		
申请(专利权)人(译)	LG.PHILIPS LCD CO. , LTD.		
当前申请(专利权)人(译)	LG DISPLAY CO. , LTD.		
[标]发明人	KWON YOUNG WAN MOON JONG WEON		
发明人	KWON, YOUNG-WAN MOON, JONG-WEON		
IPC分类号	G02F1/1335 G02F1/13 G02F1/133		
CPC分类号	G02F1/133504 G02F1/133533 G02F1/133536 G02F2001/133543		
优先权	1019990048743 1999-11-05 KR		
外部链接	Espacenet USPTO		

摘要(译)

液晶显示器 (LCD) 通过在滤色器和偏振器中使用胆甾型液晶 (CLC) 实现高亮度，并且通过使用全息漫射器改善视角。 LCD 包括用于产生和供应光的背光单元，以及用于准直由背光单元提供的光的准直片。 CLC 偏振器透射来自准直片的左旋圆偏振光，并反射其他光。下基板设置在 CLC 偏振器上方，上基板设置在下基板上方，并且包括全息漫射器，其在不改变光的偏振的情况下漫射光。液晶层设置在下基板和上基板之间，并且仅透射预定波长的光的滤色器层也设置在下基板和上基板之间。上线性偏振器位于上基板上方。因此，LCD 通过全息漫射器提供增强的视角。此外，LCD 通过 CLC 漫射器和 CLC 滤色器层实现高亮度。

