



US007817231B2

(12) **United States Patent**
Ahn et al.

(10) **Patent No.:** **US 7,817,231 B2**
(45) **Date of Patent:** **Oct. 19, 2010**

(54) **LIQUID CRYSTAL DISPLAY DEVICE AND METHOD OF FABRICATING SAME**

(75) Inventors: **Byung Chul Ahn**, Anyang-si (KR); **Tae Yong Jung**, Gumi-si (KR); **Ji No Lee**, Goyang-si (KR); **Hee Young Kwack**, Seoul (KR)

(73) Assignee: **LG Display Co., Ltd.**, Seoul (KR)

(*) Notice: Subject to any disclaimer, the term of this patent is extended or adjusted under 35 U.S.C. 154(b) by 0 days.

5,317,433 A	5/1994	Miyawaki et al.
5,339,181 A	8/1994	Kim et al.
5,462,887 A	10/1995	Gluck
5,561,440 A *	10/1996	Kitajima et al. 345/87
5,668,379 A	9/1997	Ono et al.
5,731,856 A	3/1998	Kim et al.
5,771,083 A	6/1998	Fujihara et al.
5,793,460 A	8/1998	Yang
5,847,781 A	12/1998	Ono et al.
6,556,265 B1	4/2003	Murade

(Continued)

FOREIGN PATENT DOCUMENTS

(21) Appl. No.: **12/458,959**

JP 6-235939 8/1994

(22) Filed: **Jul. 28, 2009**

(Continued)

(65) **Prior Publication Data**
US 2009/0290084 A1 Nov. 26, 2009

Primary Examiner—Timothy Rude
(74) *Attorney, Agent, or Firm*—McKenna Long & Aldridge

Related U.S. Application Data

(62) Division of application No. 11/142,315, filed on Jun. 2, 2005, now Pat. No. 7,583,337.

(57) **ABSTRACT**

(30) **Foreign Application Priority Data**
Jun. 5, 2004 (KR) 2004-041141

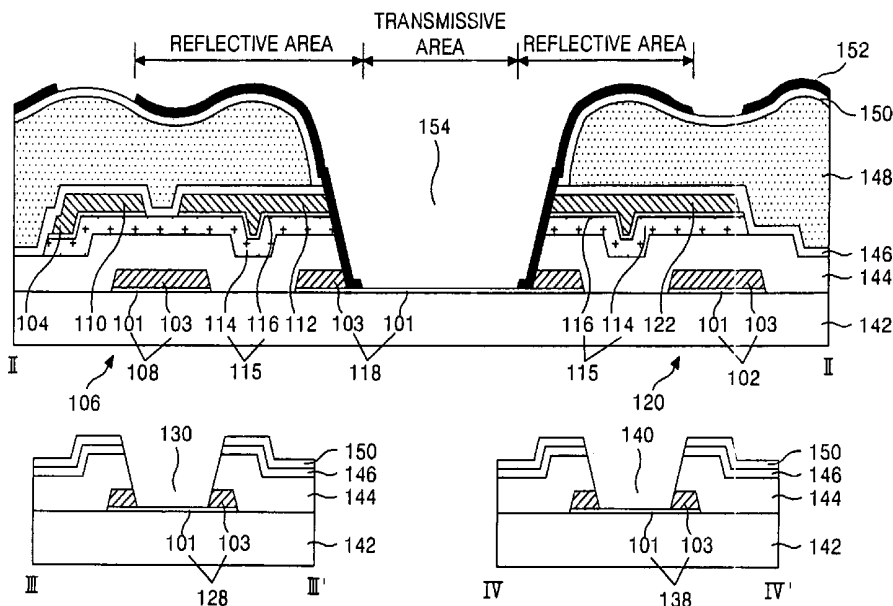
A liquid crystal display device is provided that comprises a gate line; a first insulating film on the gate line; a data line crossing the gate line to define a pixel region, the pixel region having a transmissive area and a reflective area; a thin film transistor connected to the gate line and the data line; a pixel electrode formed in the pixel region; a second insulating film on the thin film transistor; a storage capacitor including a storage upper electrode overlapping the gate line; a transmission hole exposing at least a portion of the pixel electrode, and a reflective electrode formed in the reflective area of the pixel region, the reflective electrode connecting the pixel electrode with thin film transistor and the storage upper electrode, wherein the gate line and the pixel electrode include a first transparent conductive layer.

(51) **Int. Cl.**
G02F 1/1335 (2006.01)
(52) **U.S. Cl.** **349/114**
(58) **Field of Classification Search** None
See application file for complete search history.

(56) **References Cited**
U.S. PATENT DOCUMENTS

5,162,933 A 11/1992 Kakuda et al.

25 Claims, 44 Drawing Sheets



US 7,817,231 B2

Page 2

U.S. PATENT DOCUMENTS

6,559,920 B1 5/2003 Ahn et al.
6,624,446 B2 9/2003 Kim
6,683,666 B1 1/2004 Jang et al.
6,897,925 B2 5/2005 Kim et al.
6,914,643 B1 7/2005 Nagase et al.
7,453,537 B2 11/2008 Kim et al.
7,480,020 B2 1/2009 Wen et al.
7,528,909 B2* 5/2009 Ahn et al. 349/114
7,583,336 B2* 9/2009 Ahn 349/114
7,583,337 B2* 9/2009 Ahn et al. 349/114
2002/0101547 A1 8/2002 Lee et al.
2003/0133059 A1 7/2003 Wei et al.
2004/0021813 A1* 2/2004 Kim et al. 349/113

2004/0075793 A1* 4/2004 Itoh et al. 349/114
2004/0125313 A1 7/2004 Lim
2009/0291517 A1* 11/2009 Ahn 438/30

FOREIGN PATENT DOCUMENTS

JP 2002-182239 6/2002
JP 2003-255378 9/2003
JP 2004-046223 2/2004
JP 2004-070355 3/2004
JP 2004-101792 4/2004
JP 2005-352479 12/2005
WO WO 03/107434 12/2003

* cited by examiner

FIG. 2A
RELATED ART



FIG. 2B
RELATED ART

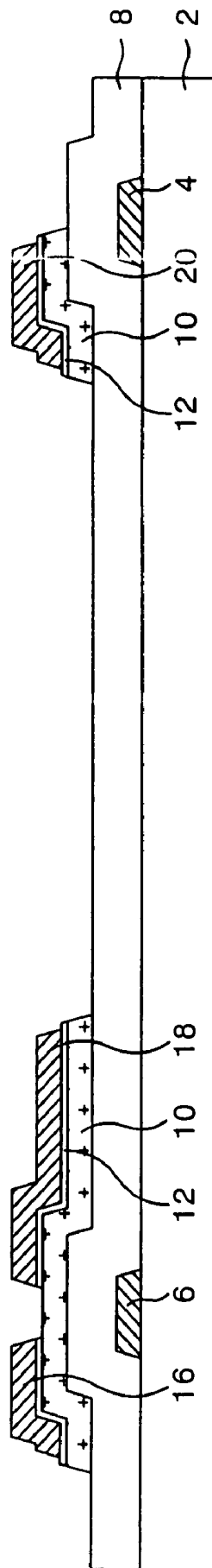


FIG. 2C
RELATED ART

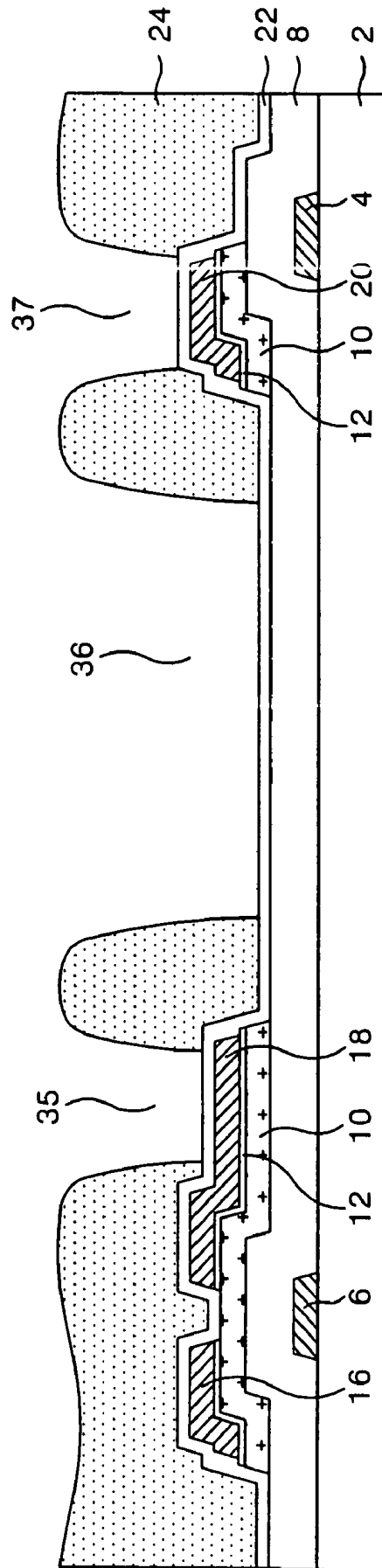


FIG. 2E
RELATED ART

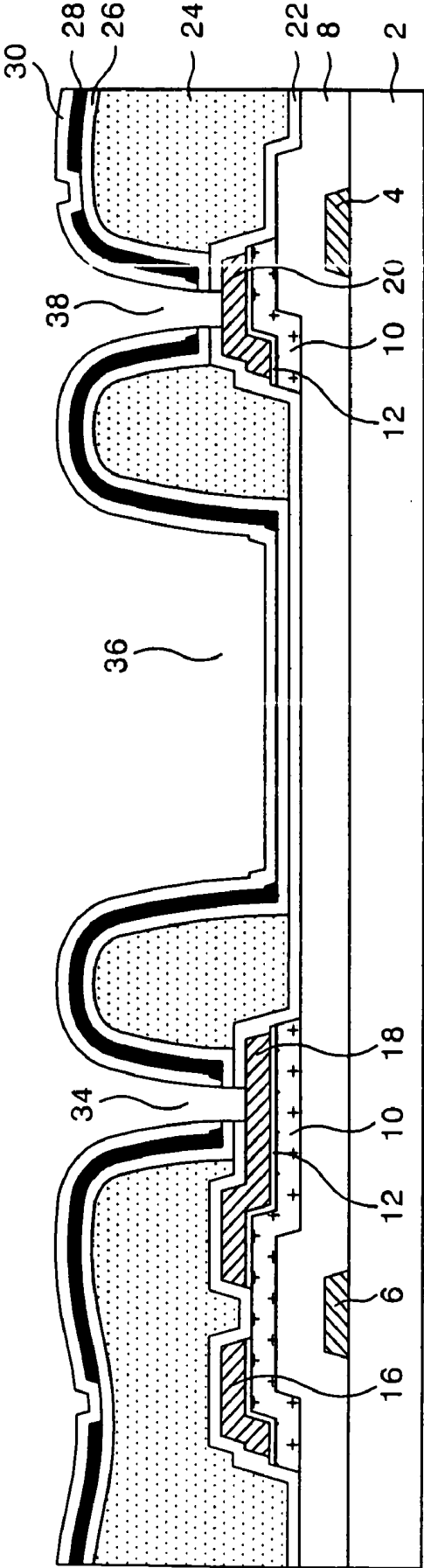
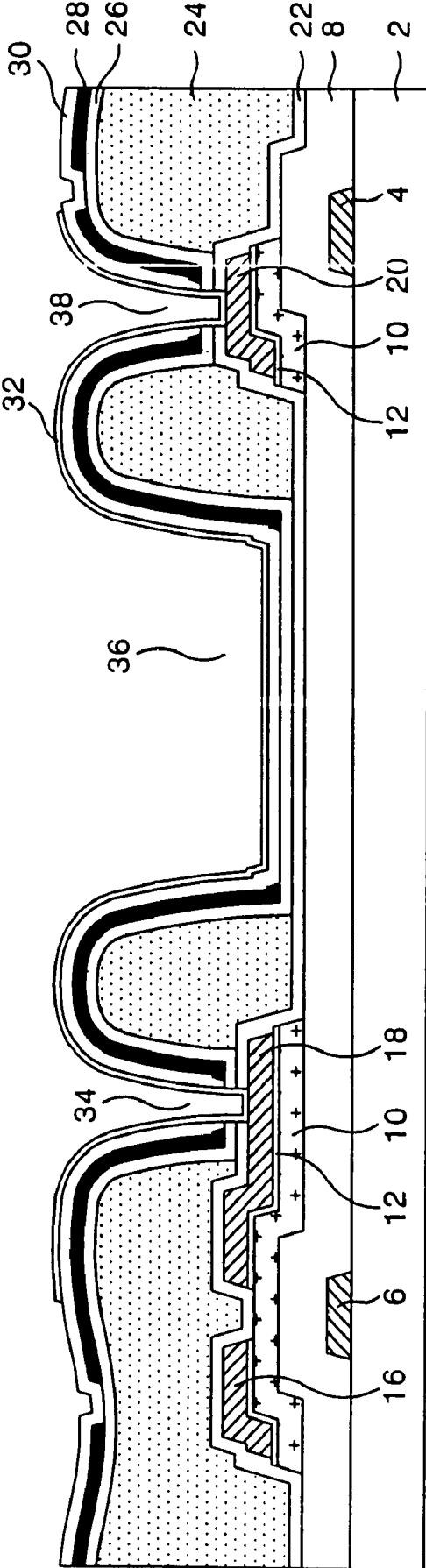


FIG. 2F
RELATED ART



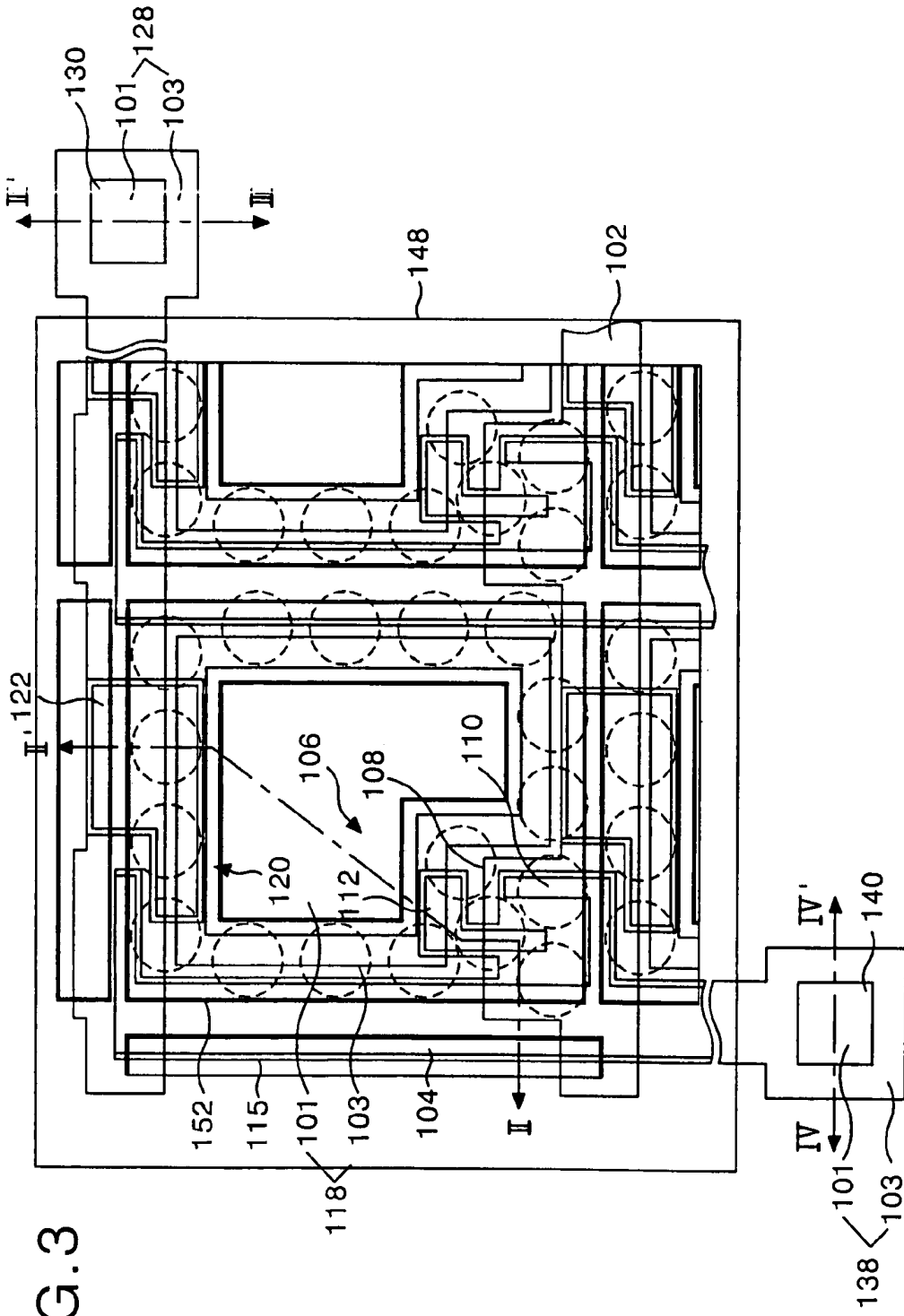
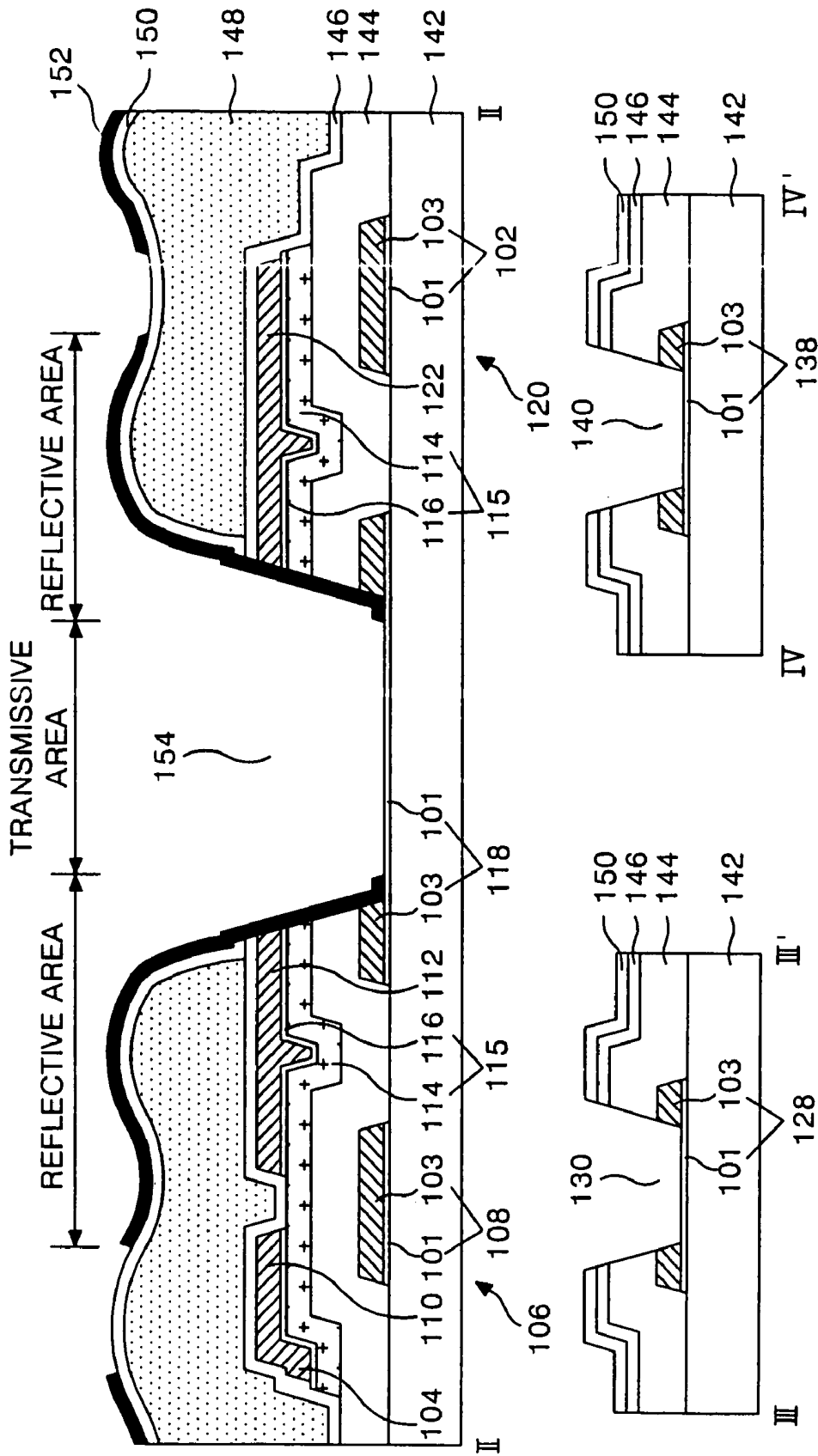


FIG. 4



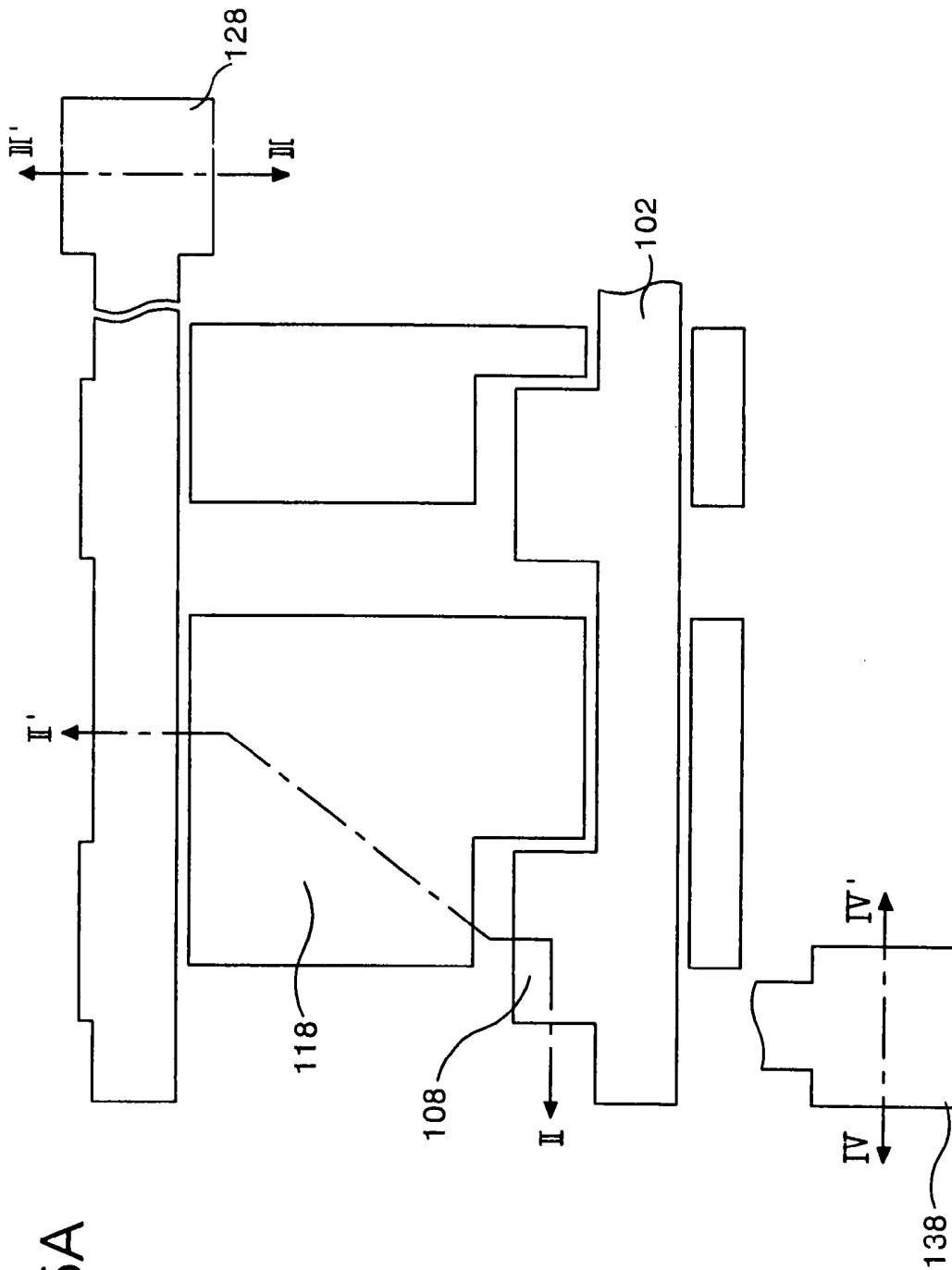
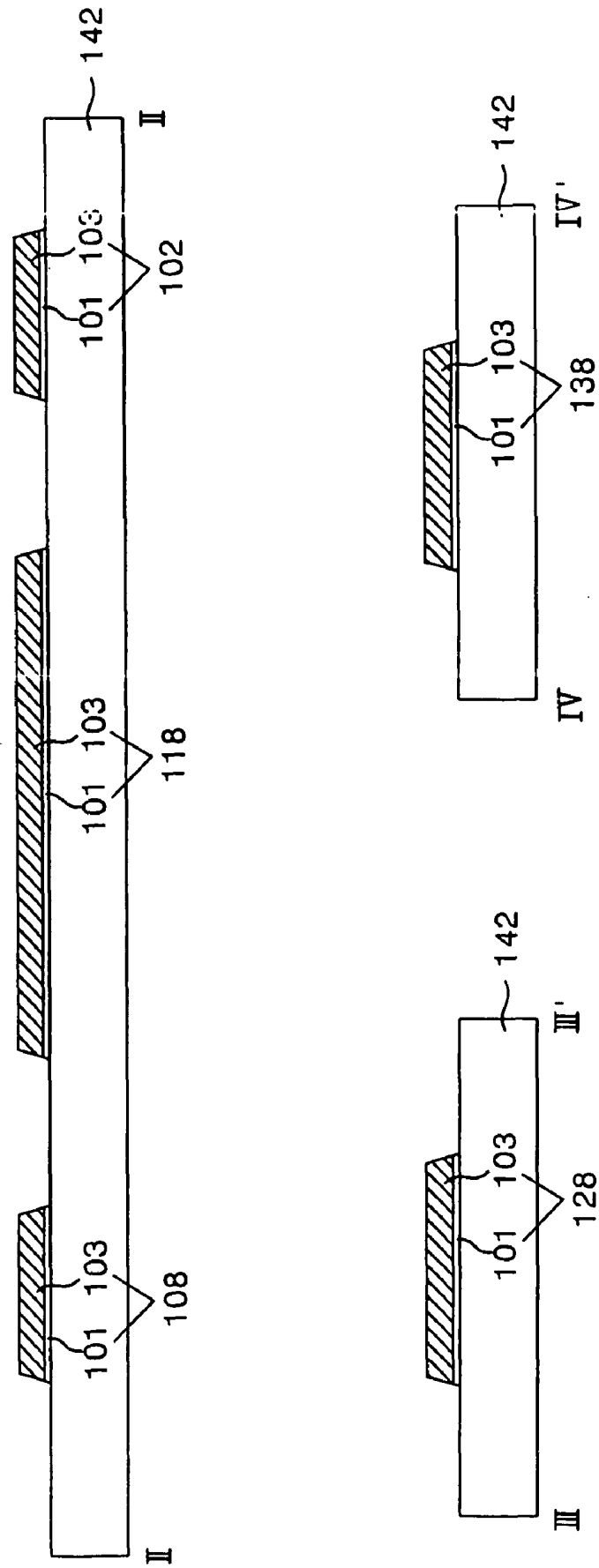


FIG. 5A

FIG. 5B



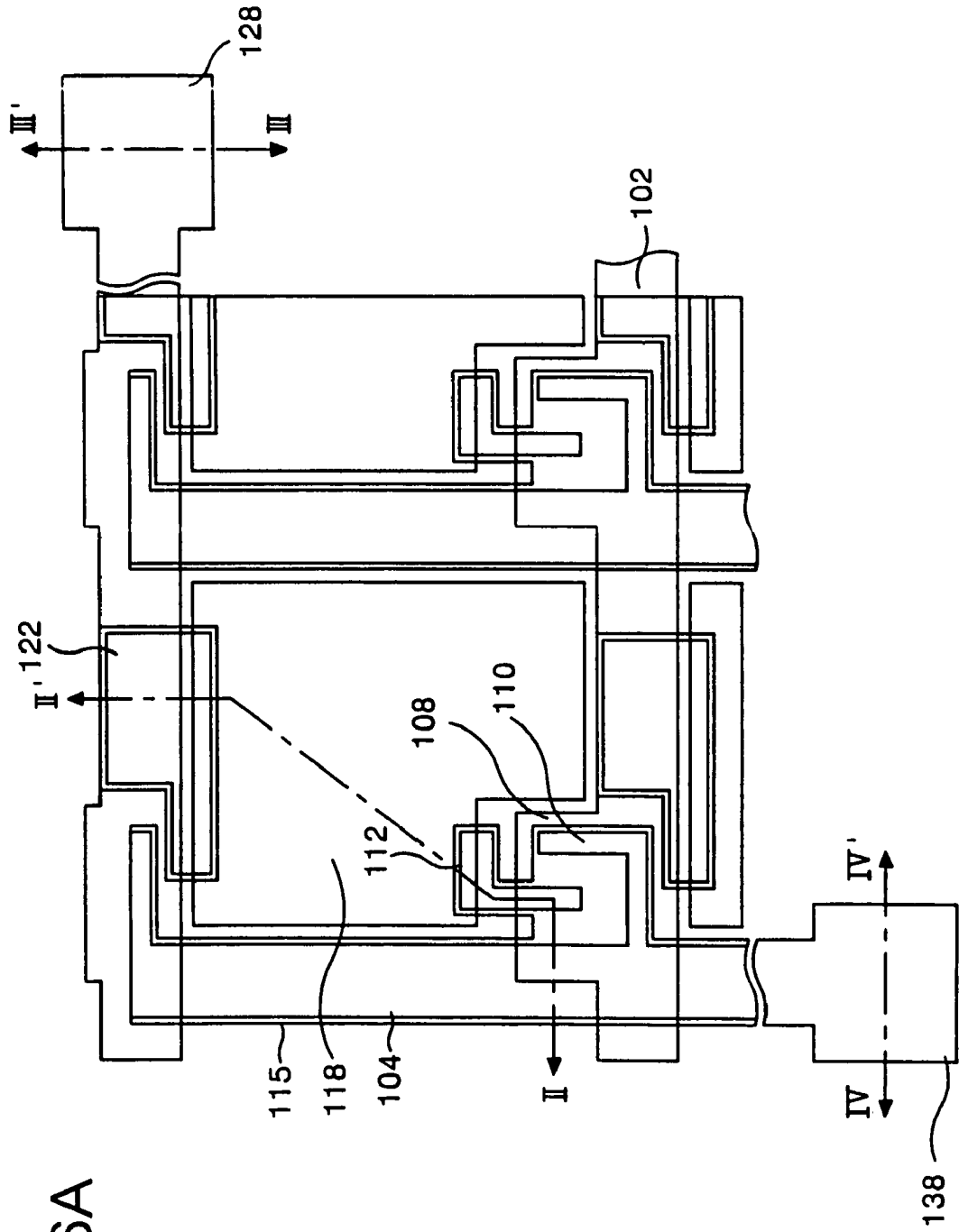


FIG. 6A

FIG. 6B

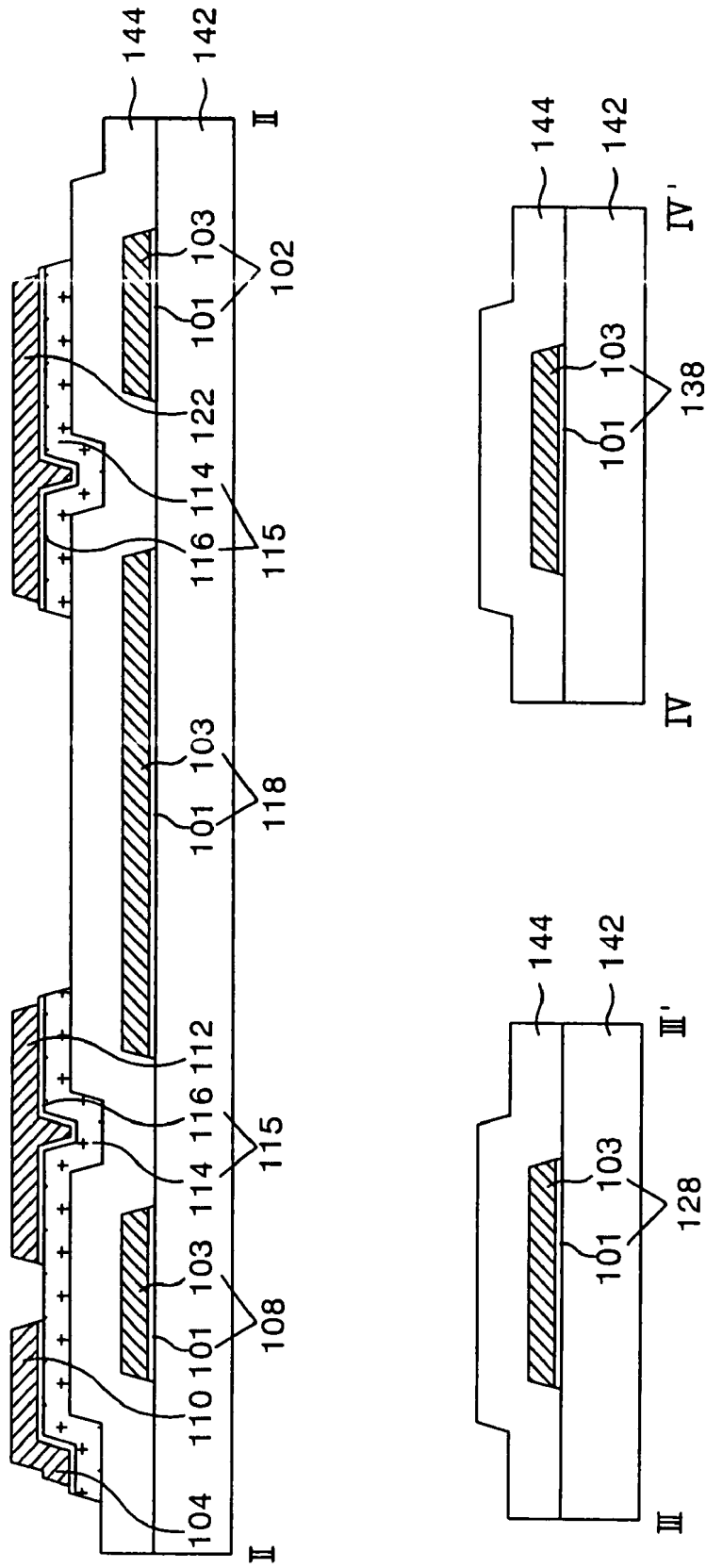


FIG. 7B

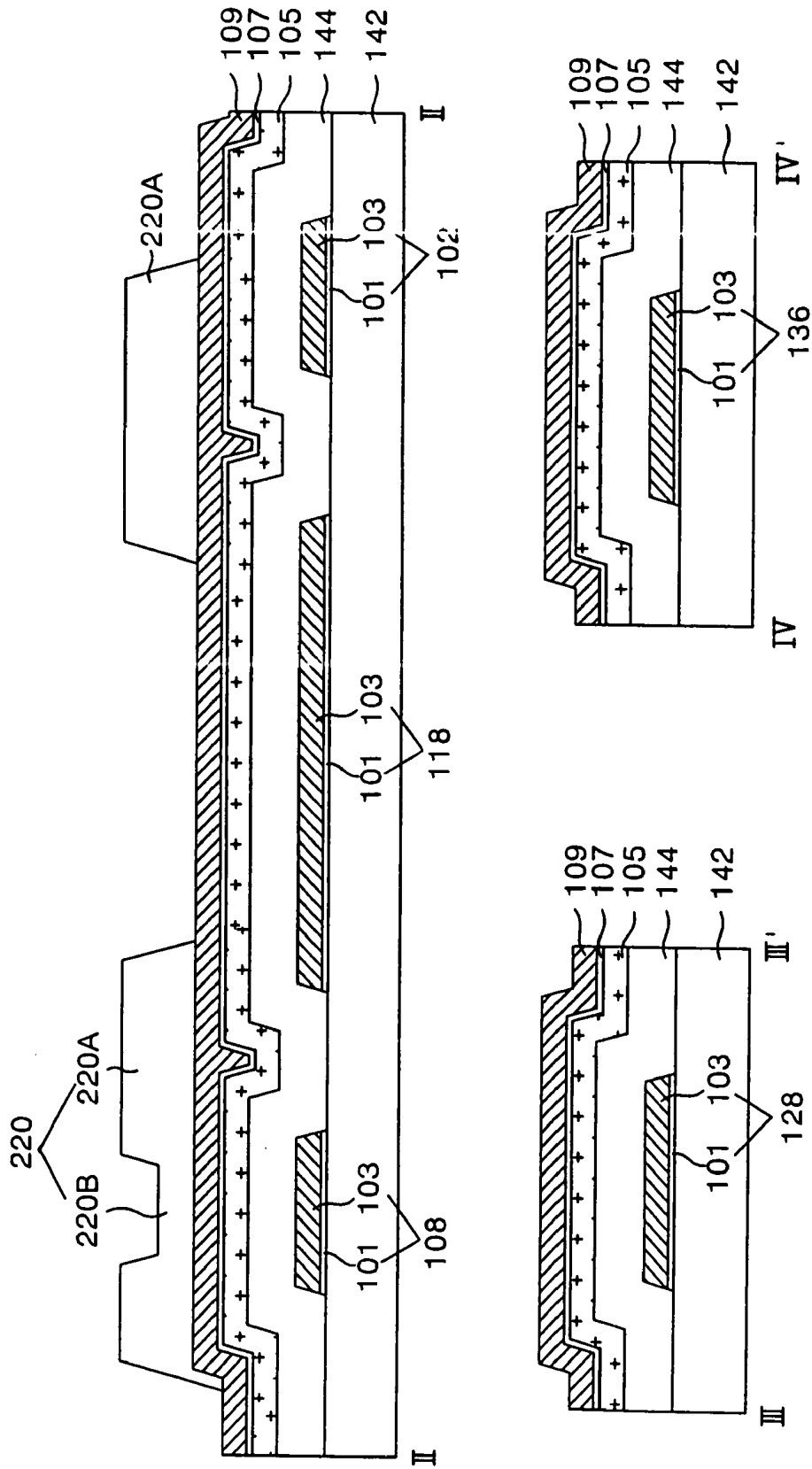


FIG. 7C

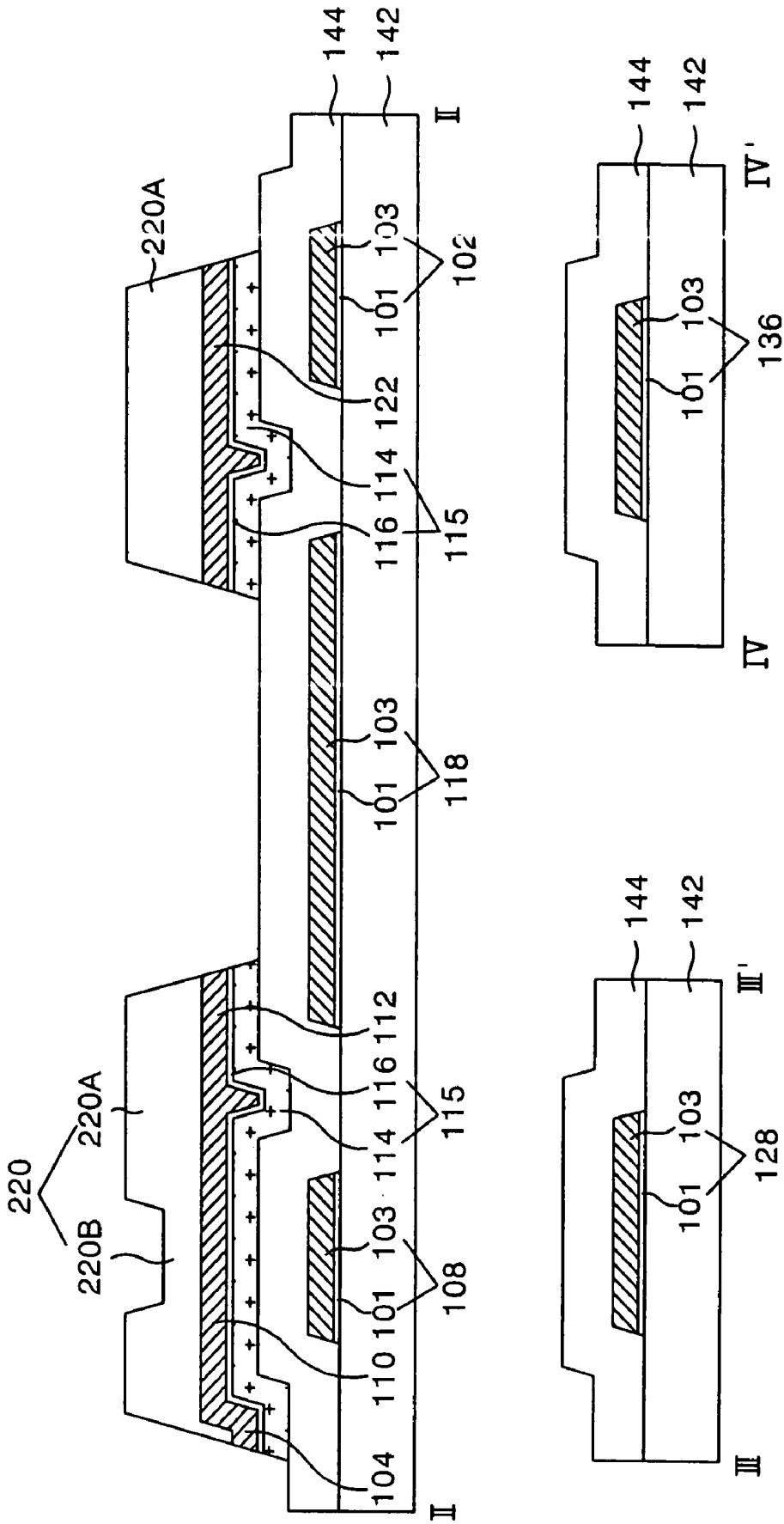


FIG. 7D

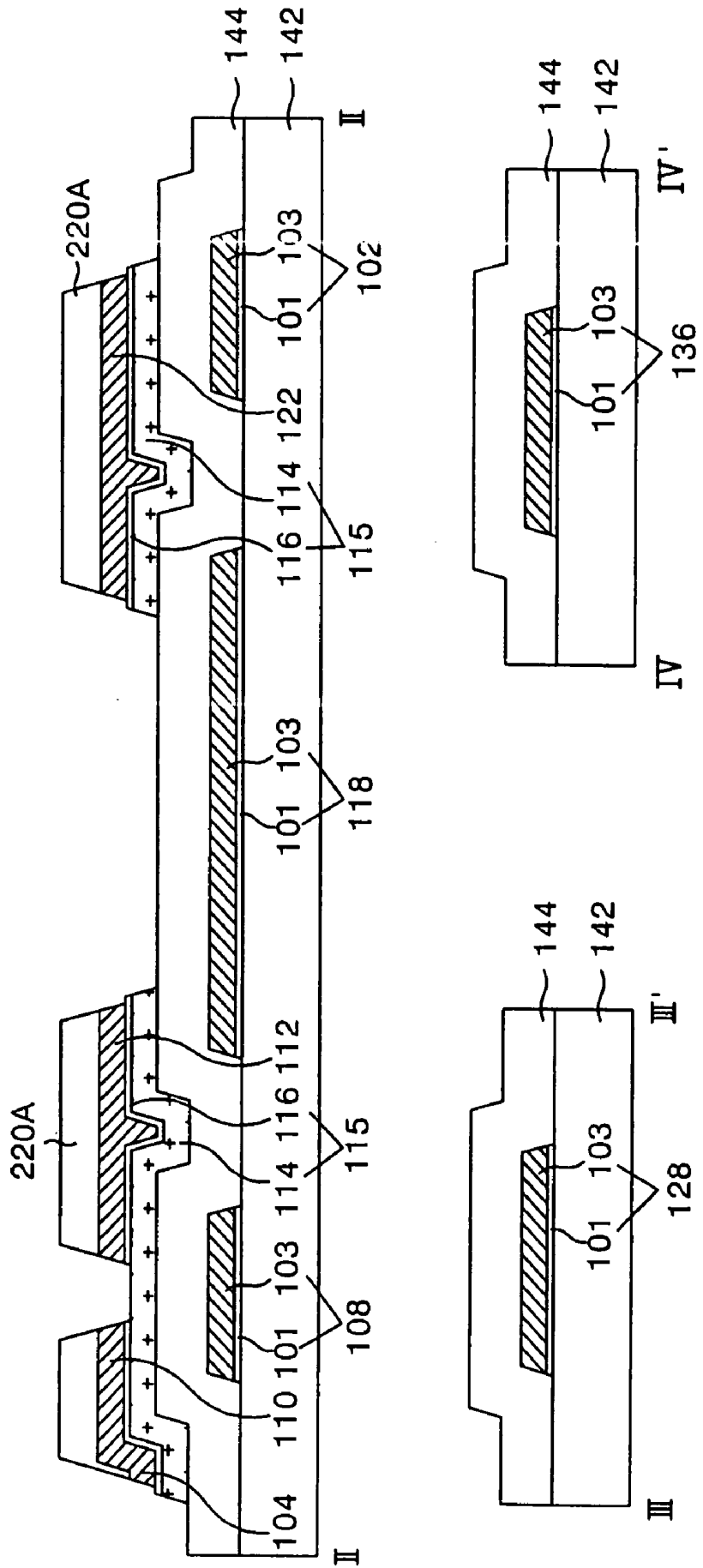
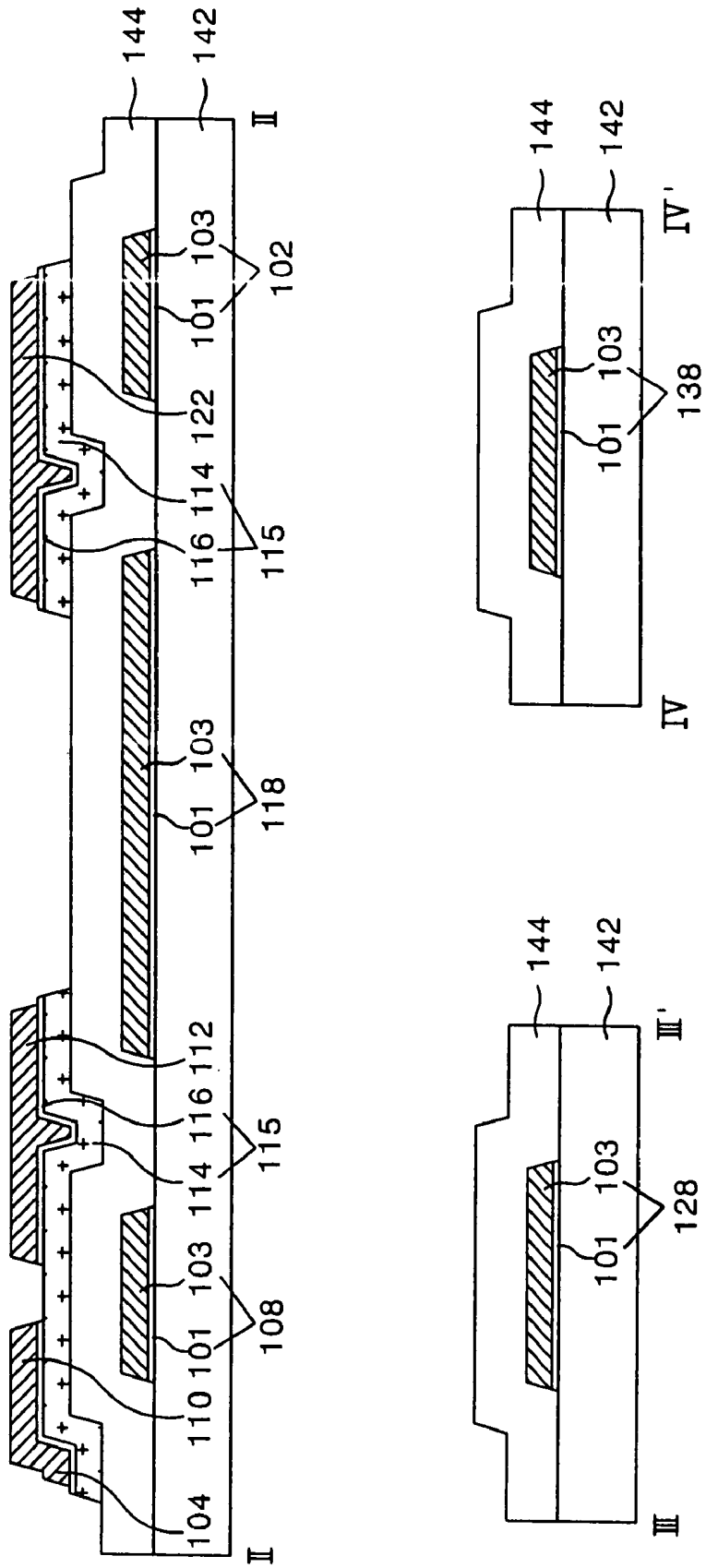


FIG. 7E



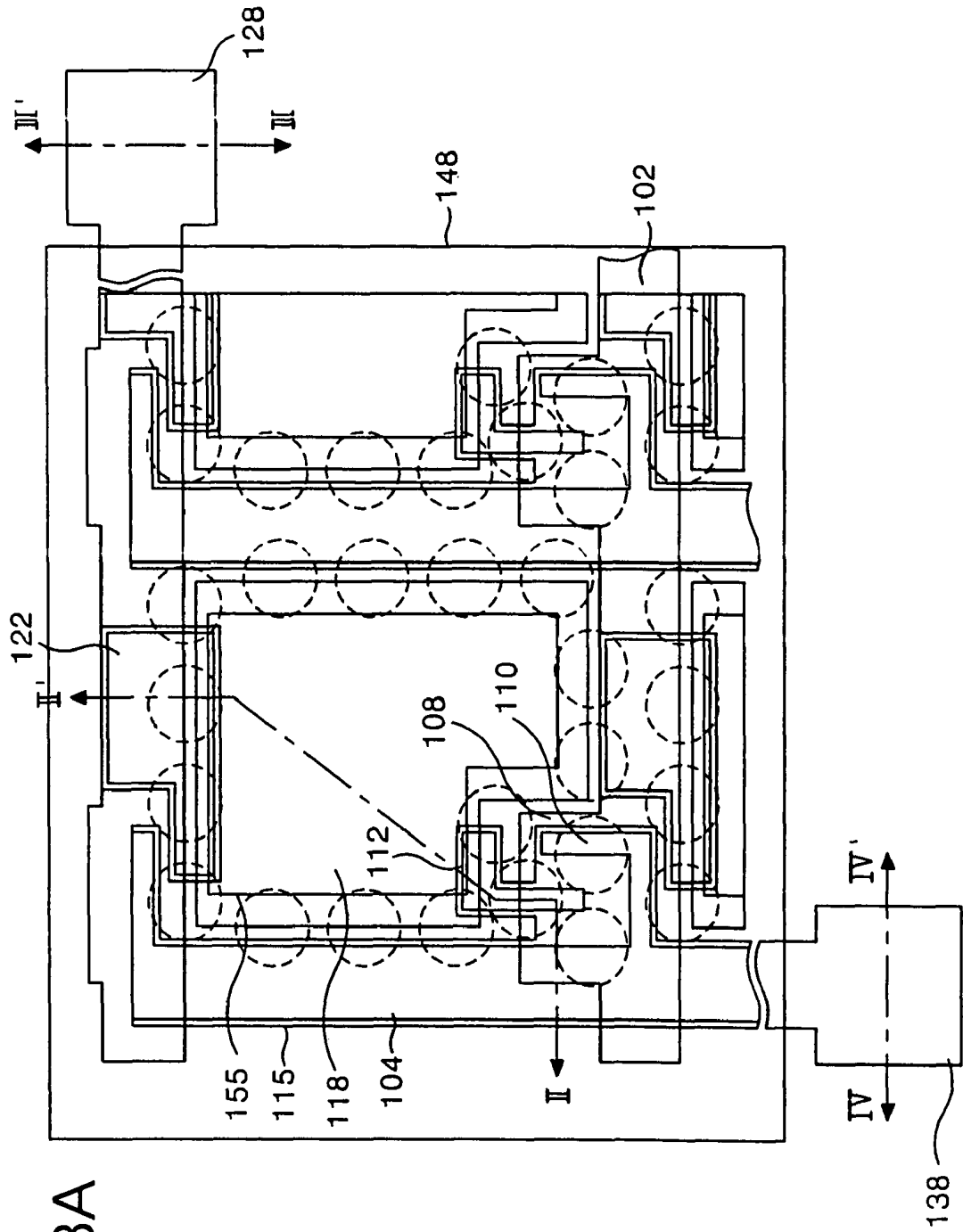
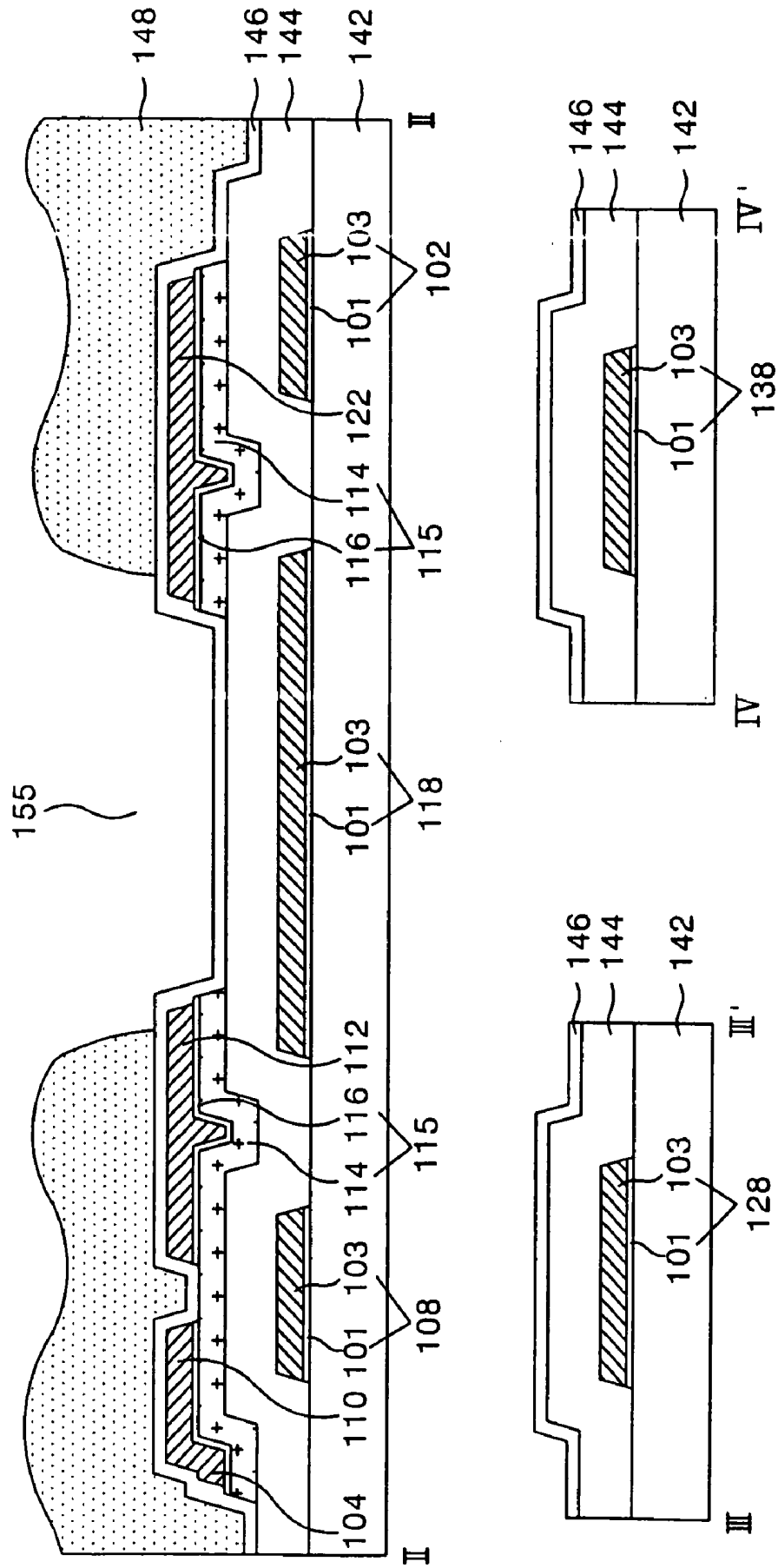


FIG. 8A

FIG. 8B



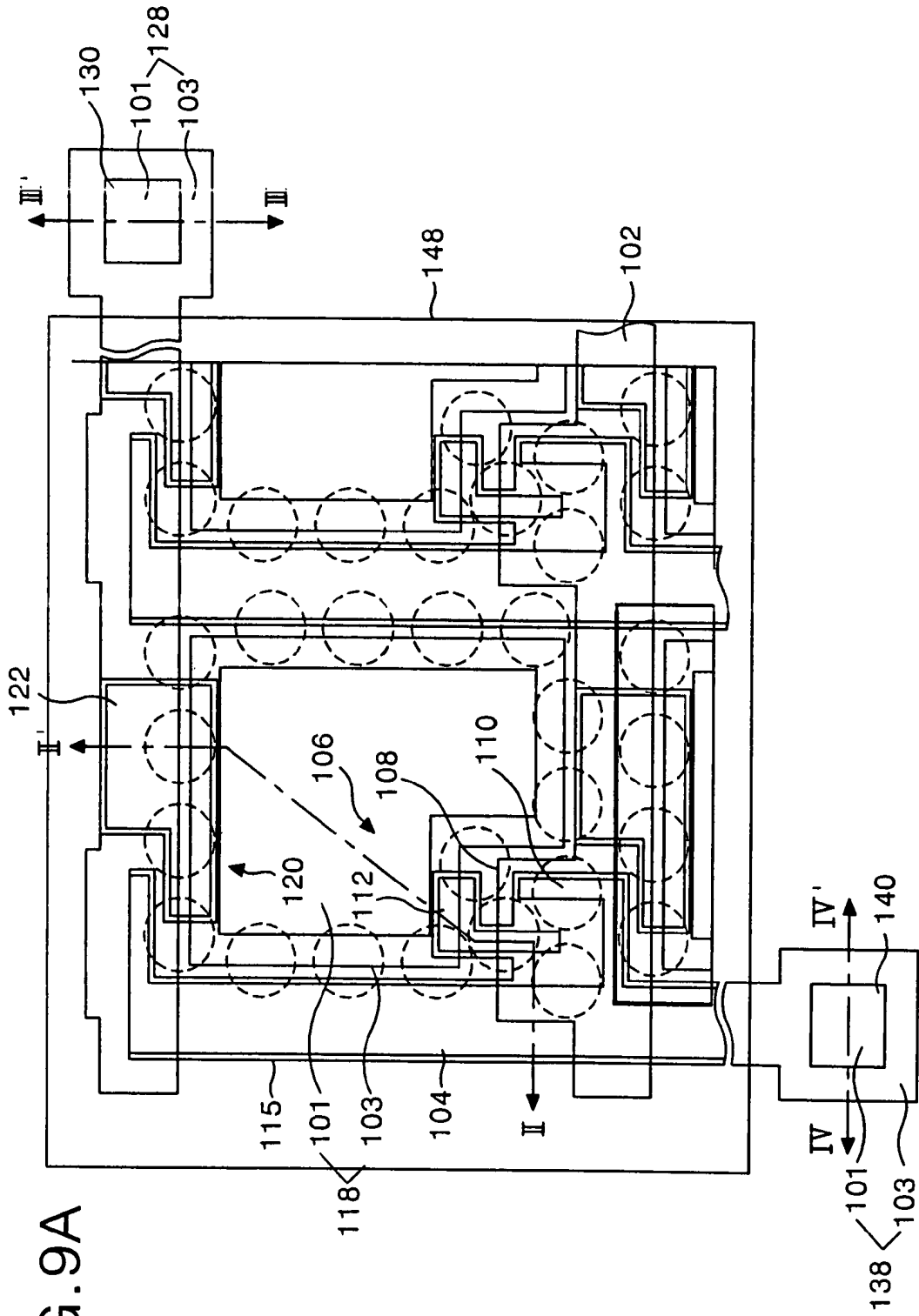
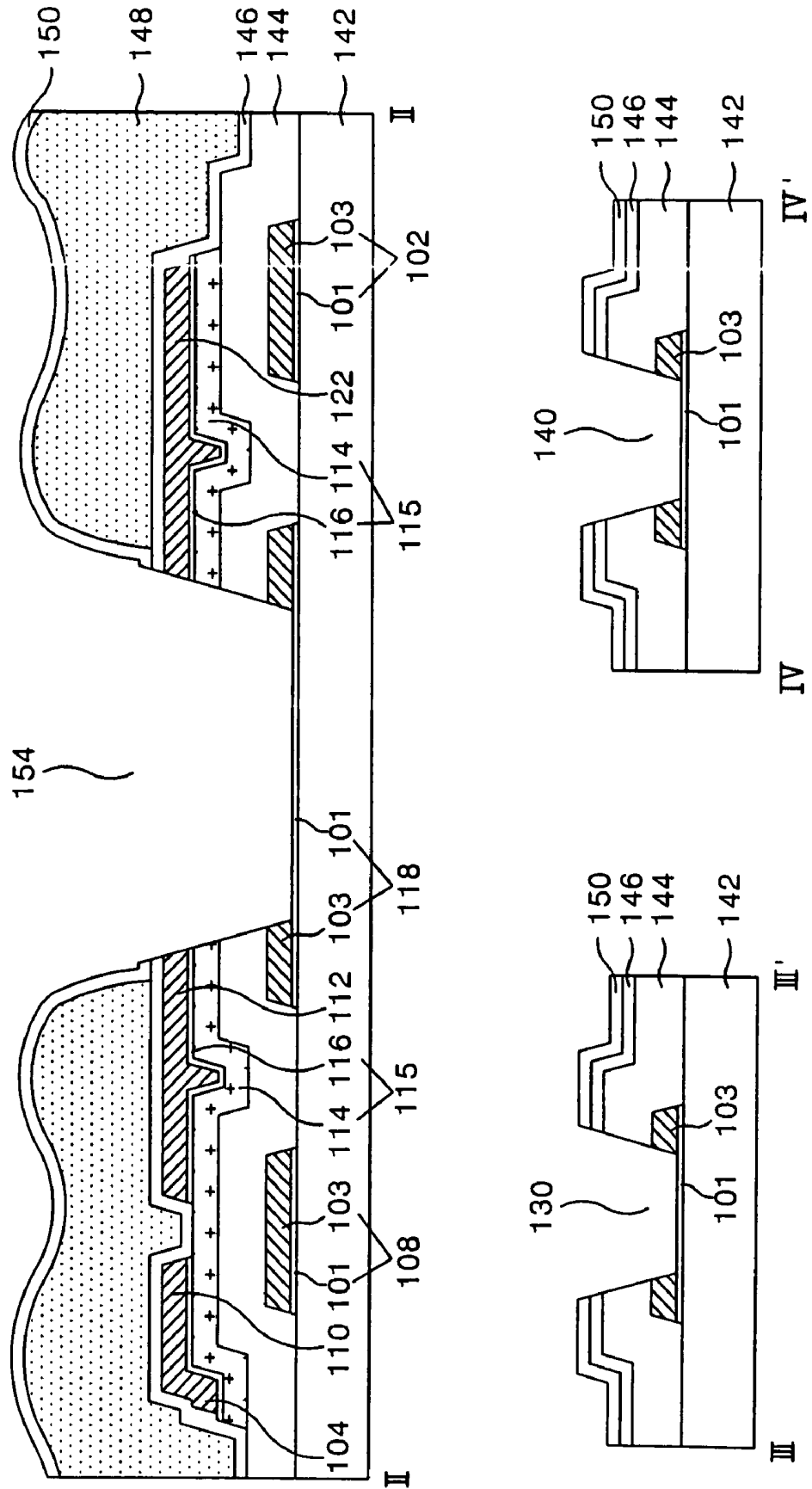


FIG. 9B



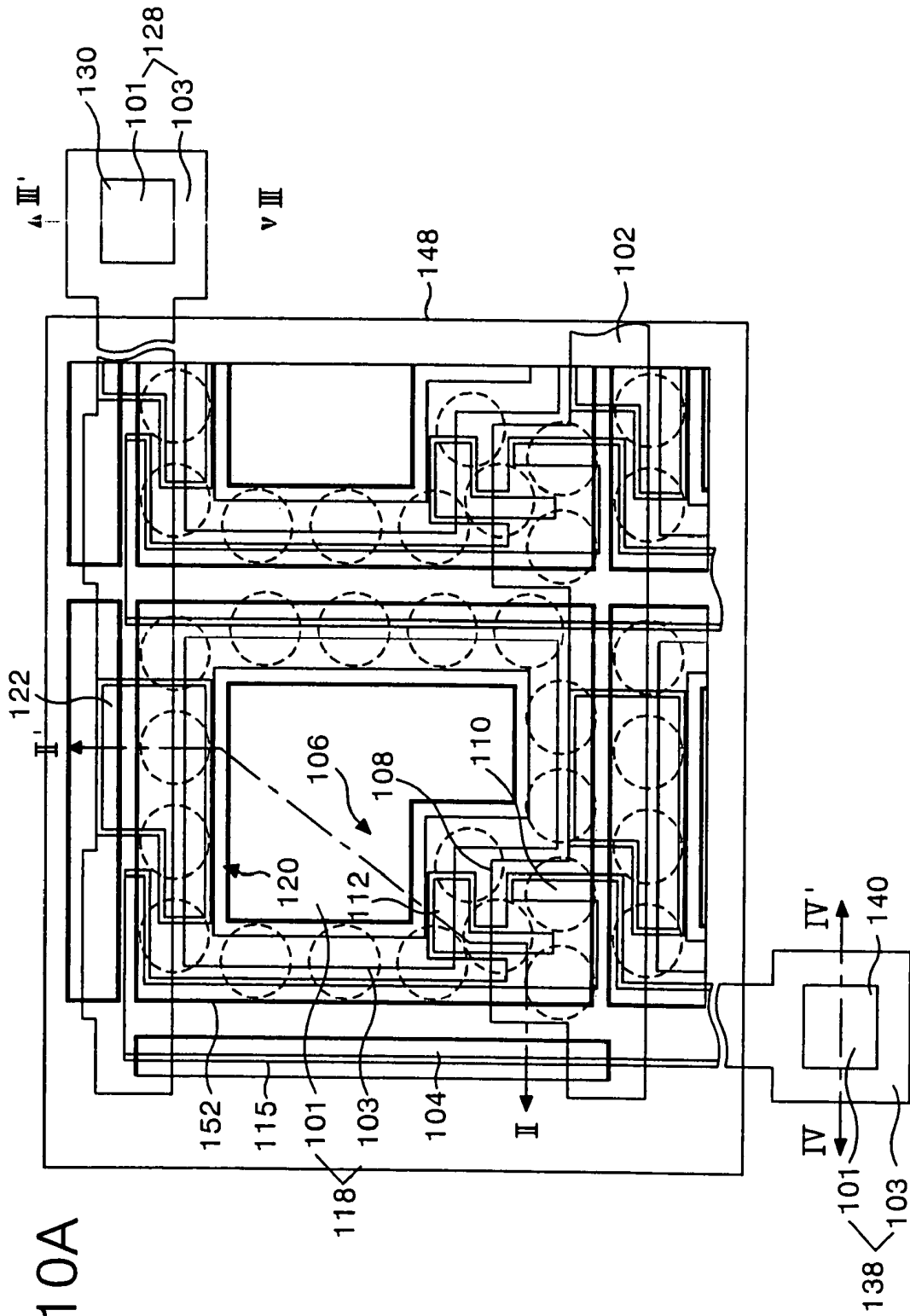


FIG. 10A

FIG. 11

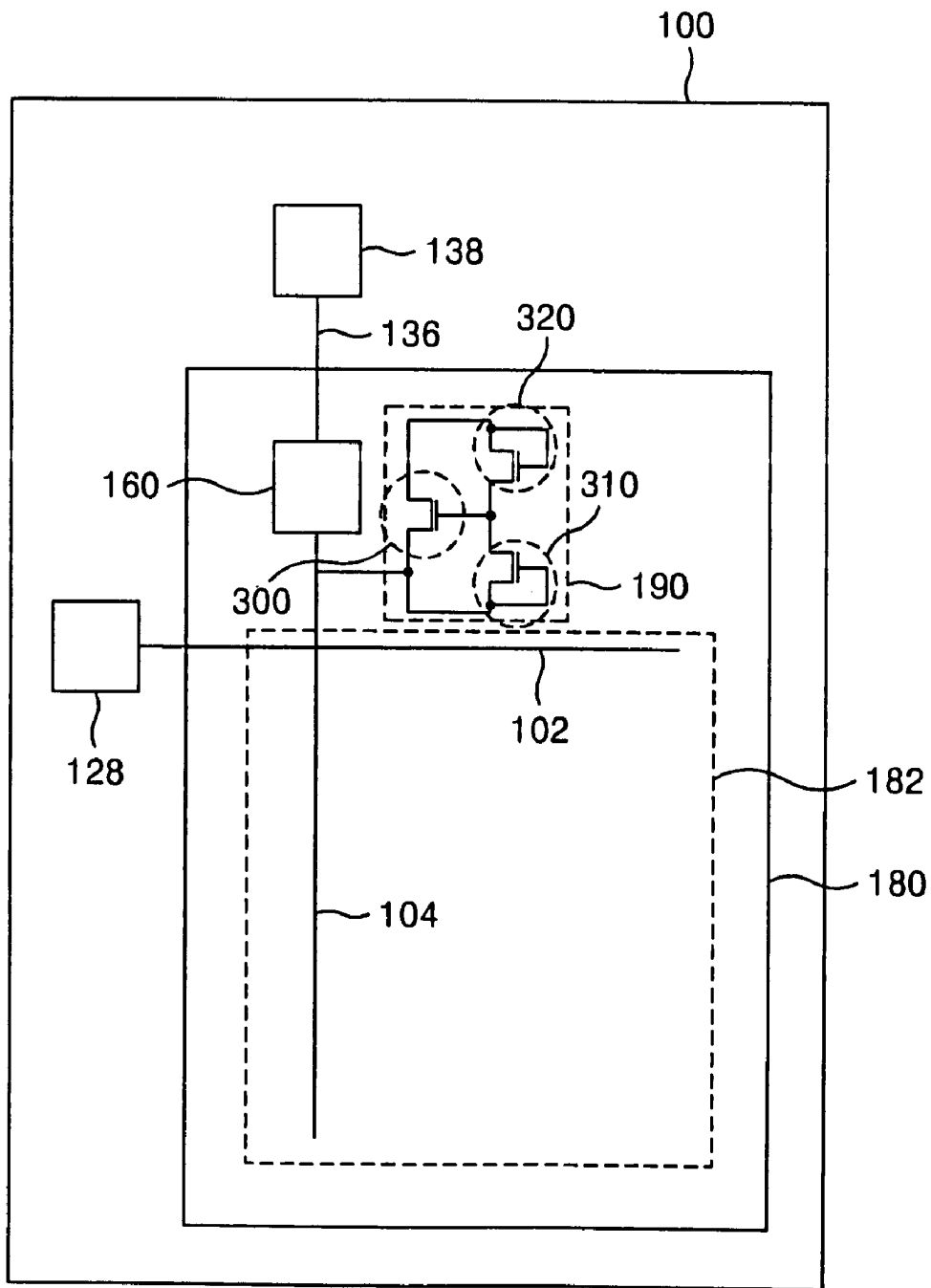


FIG. 12

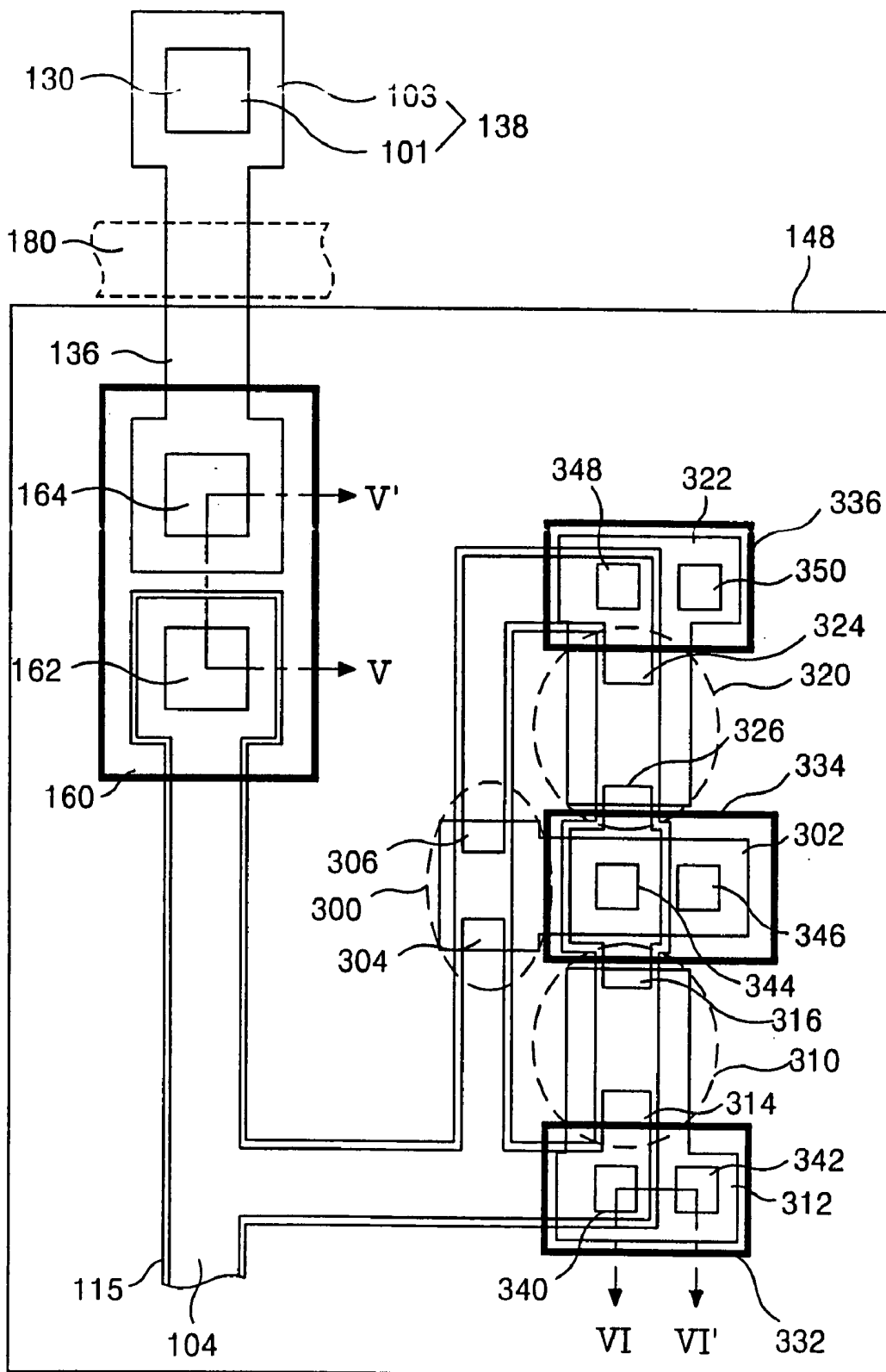


FIG. 13

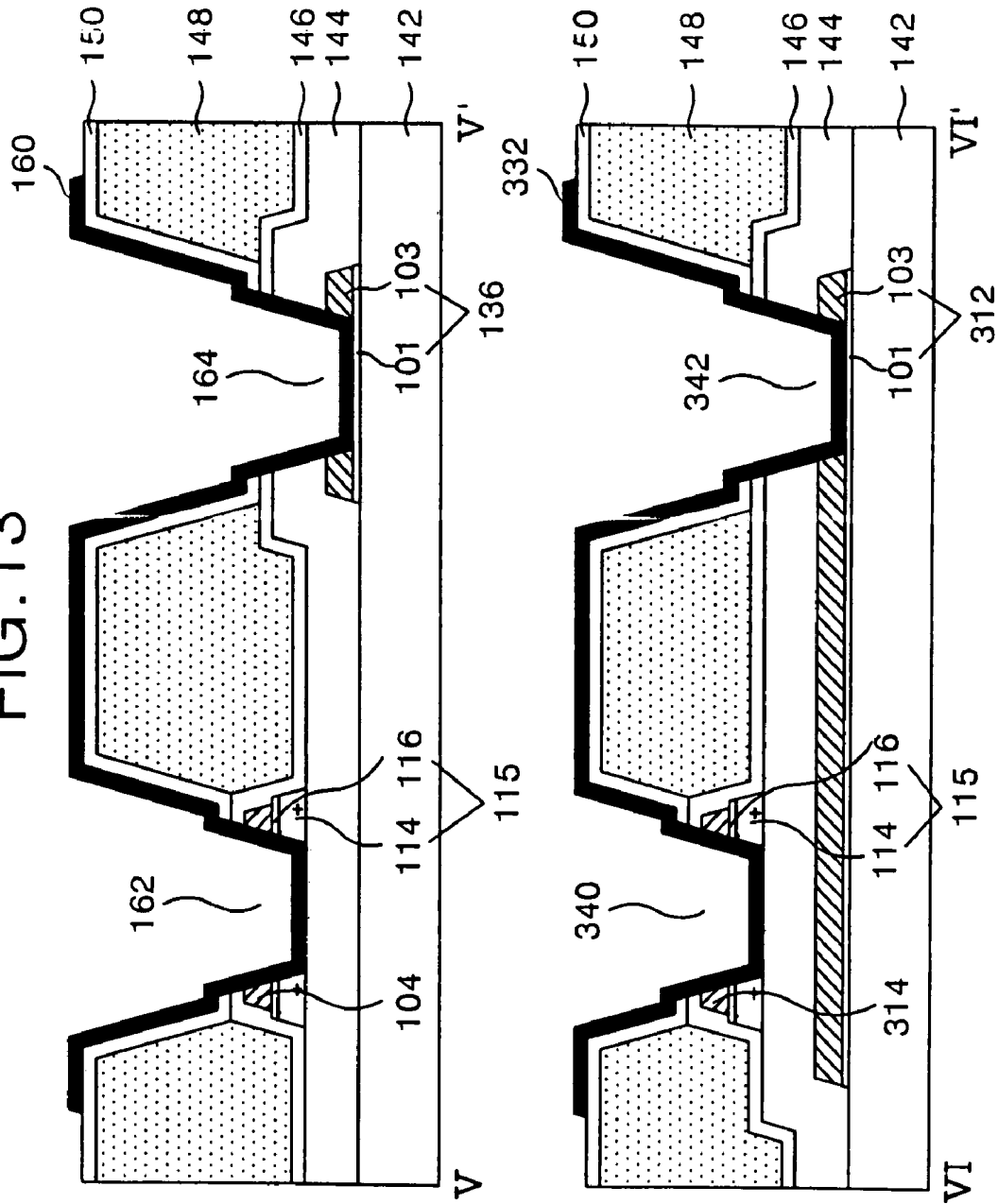


FIG. 14A

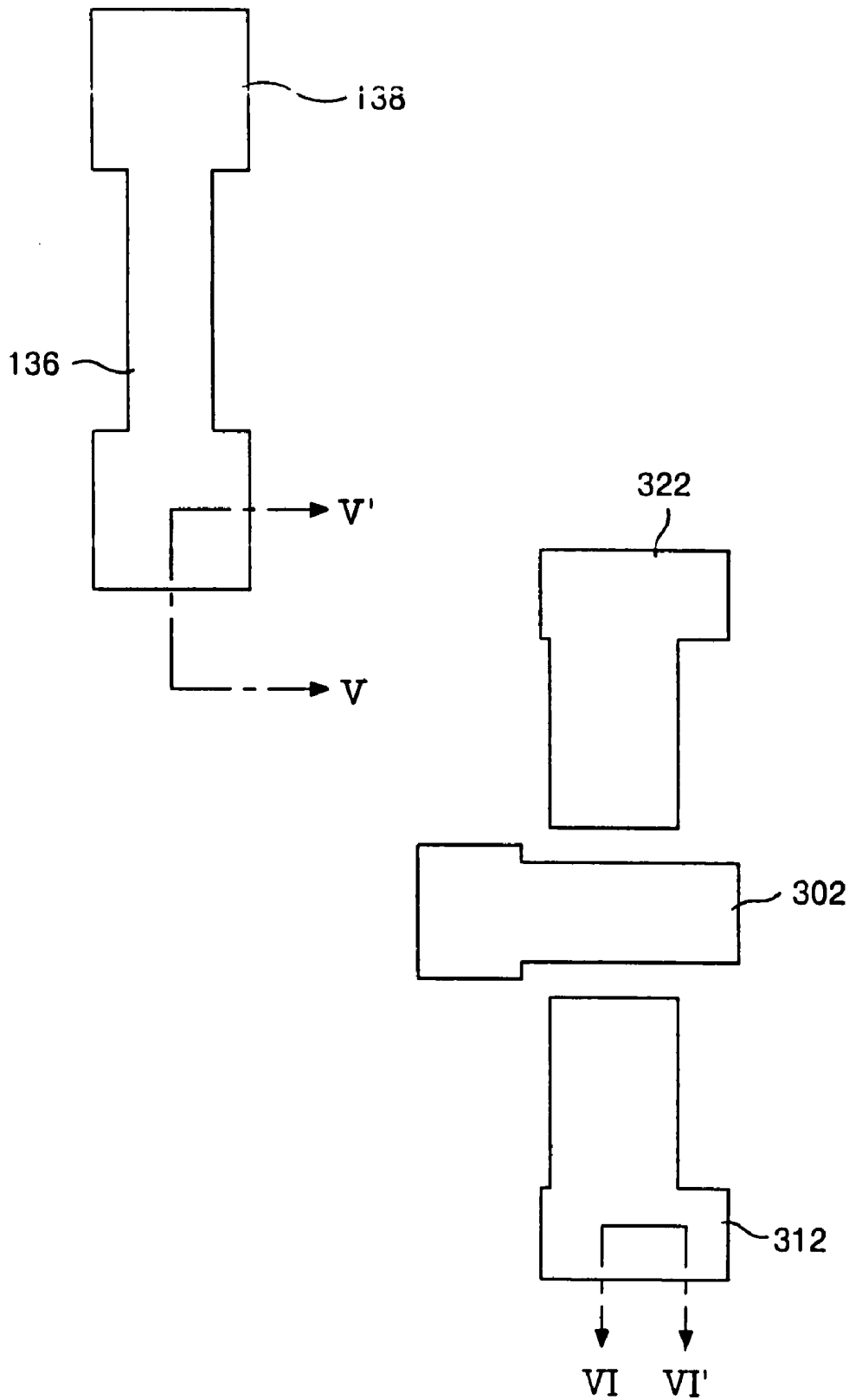


FIG. 14B

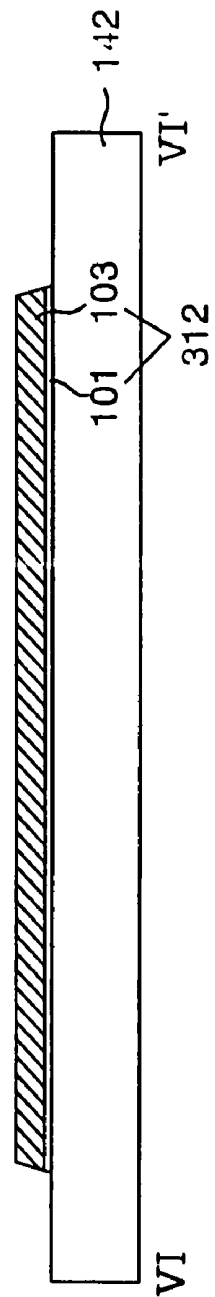
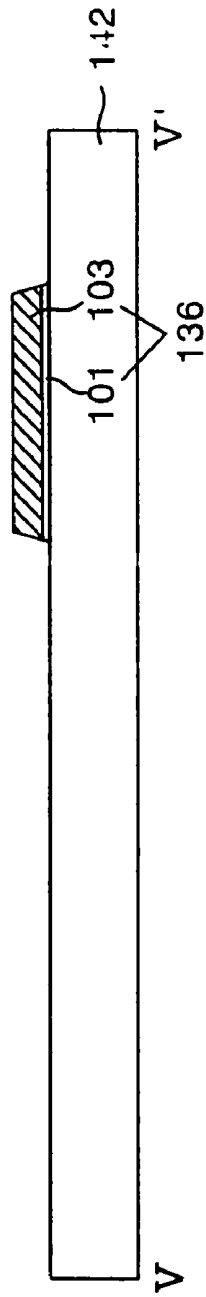


FIG. 15A

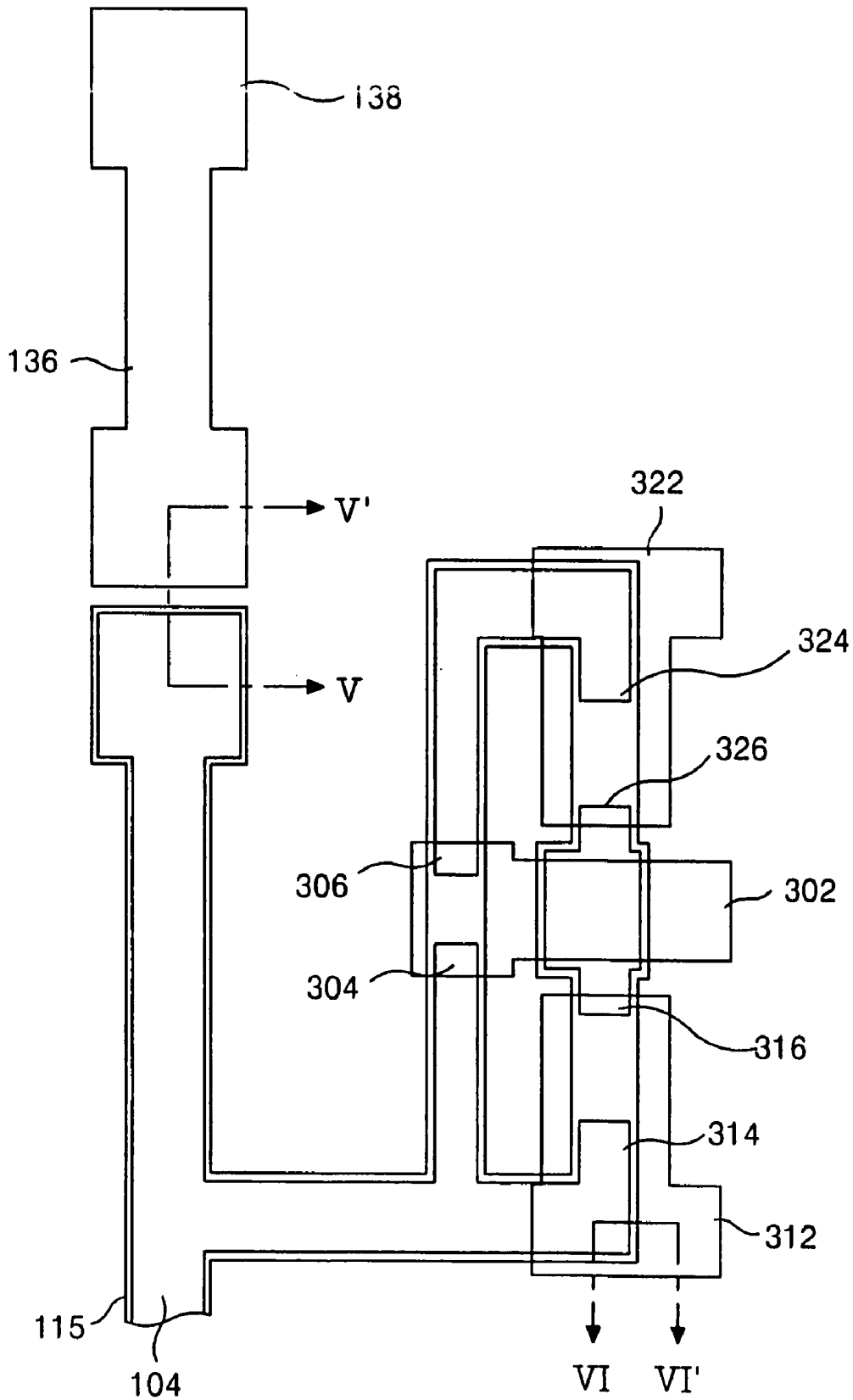


FIG. 15B

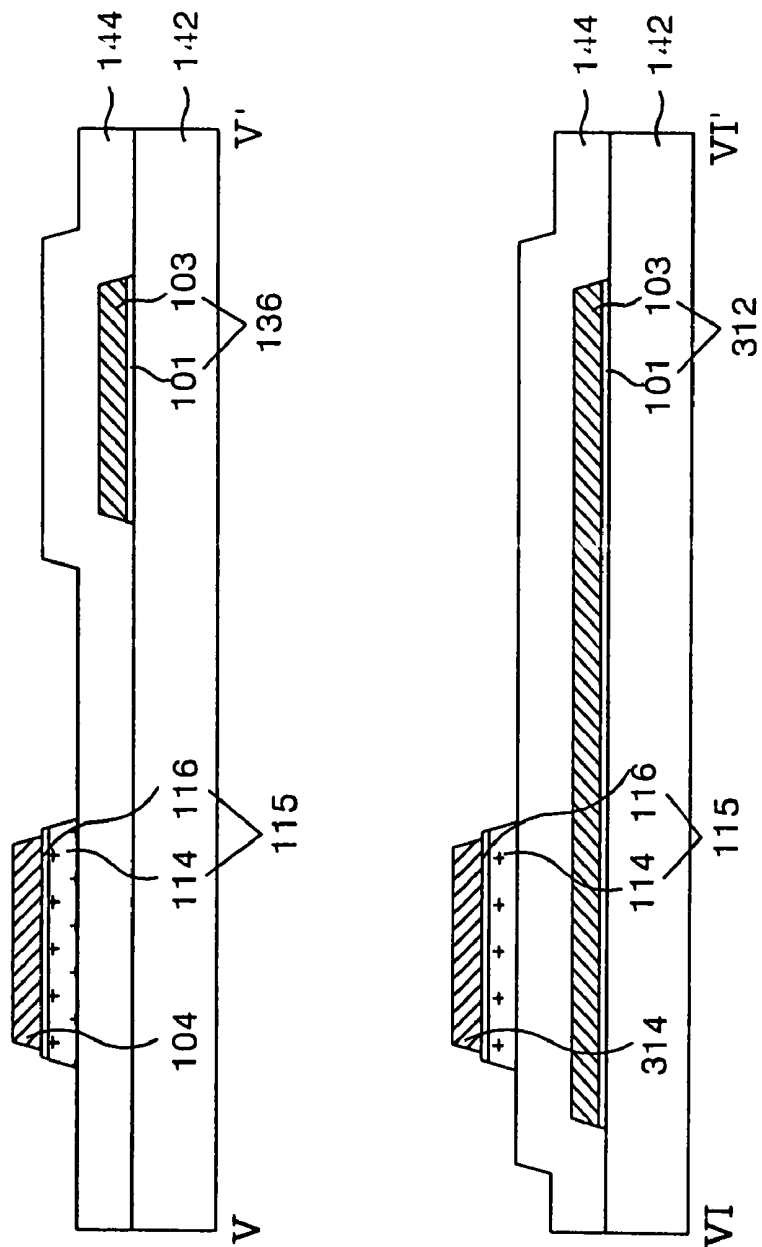


FIG. 16A

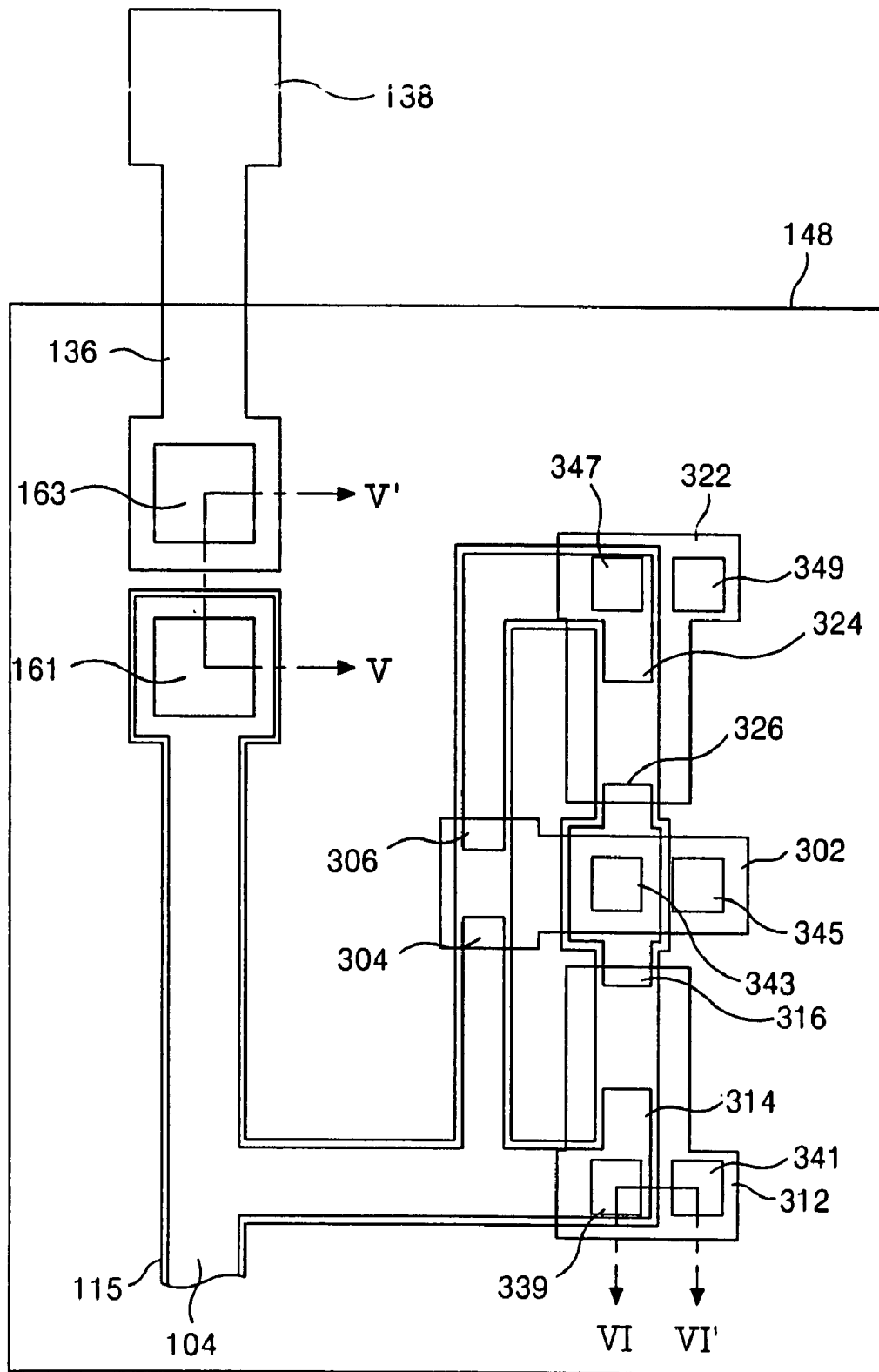


FIG. 16B

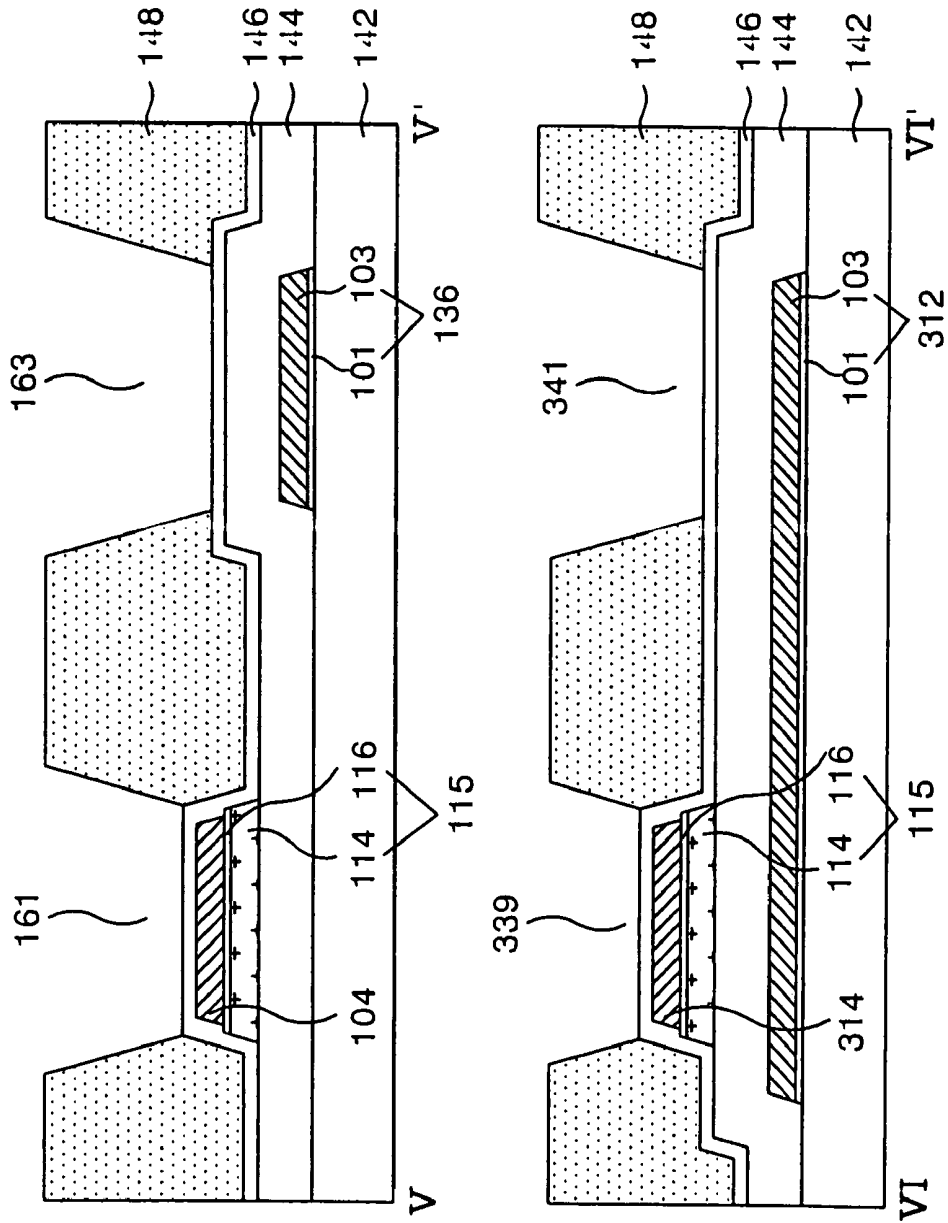


FIG. 17A

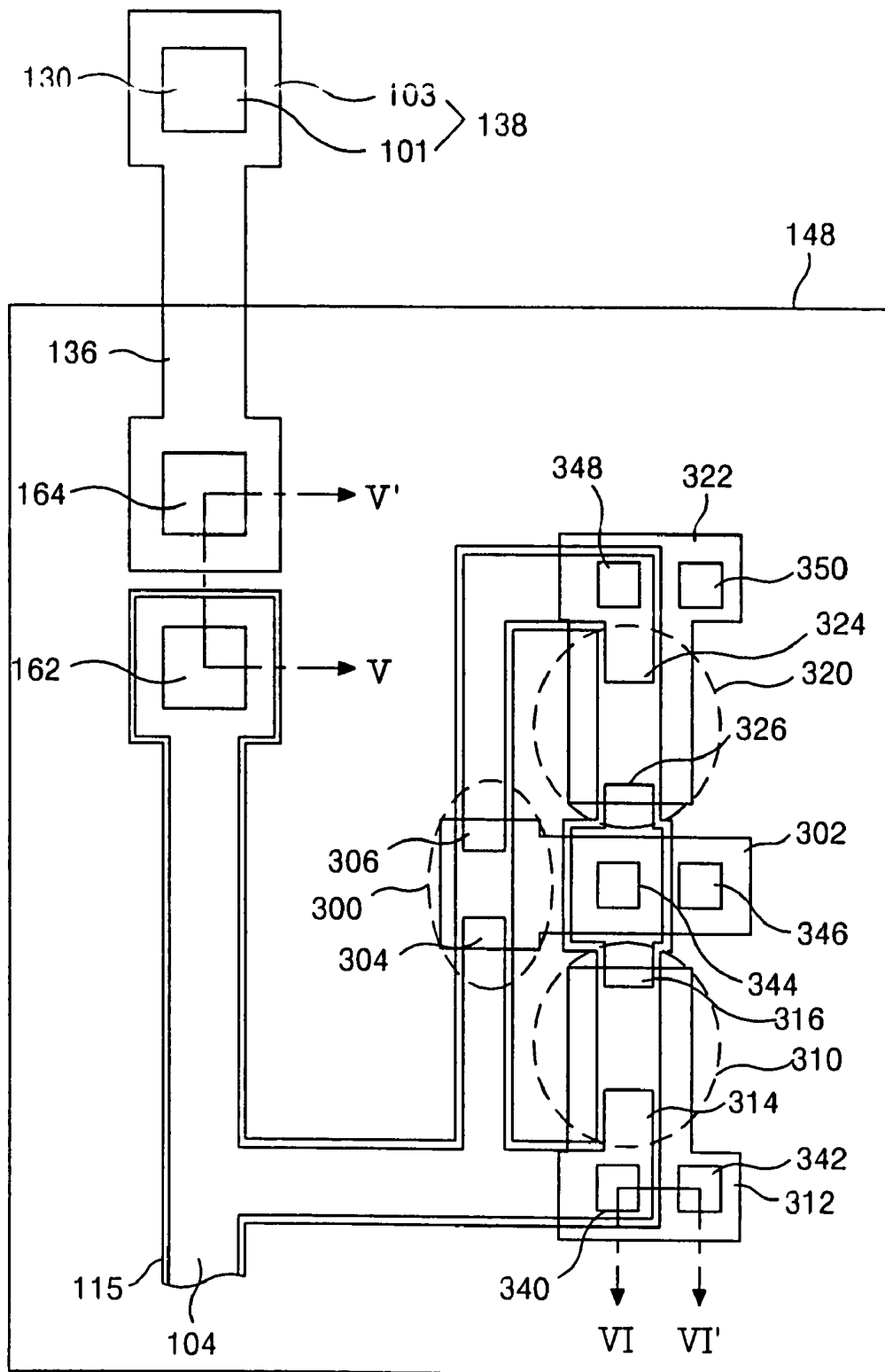


FIG. 17B

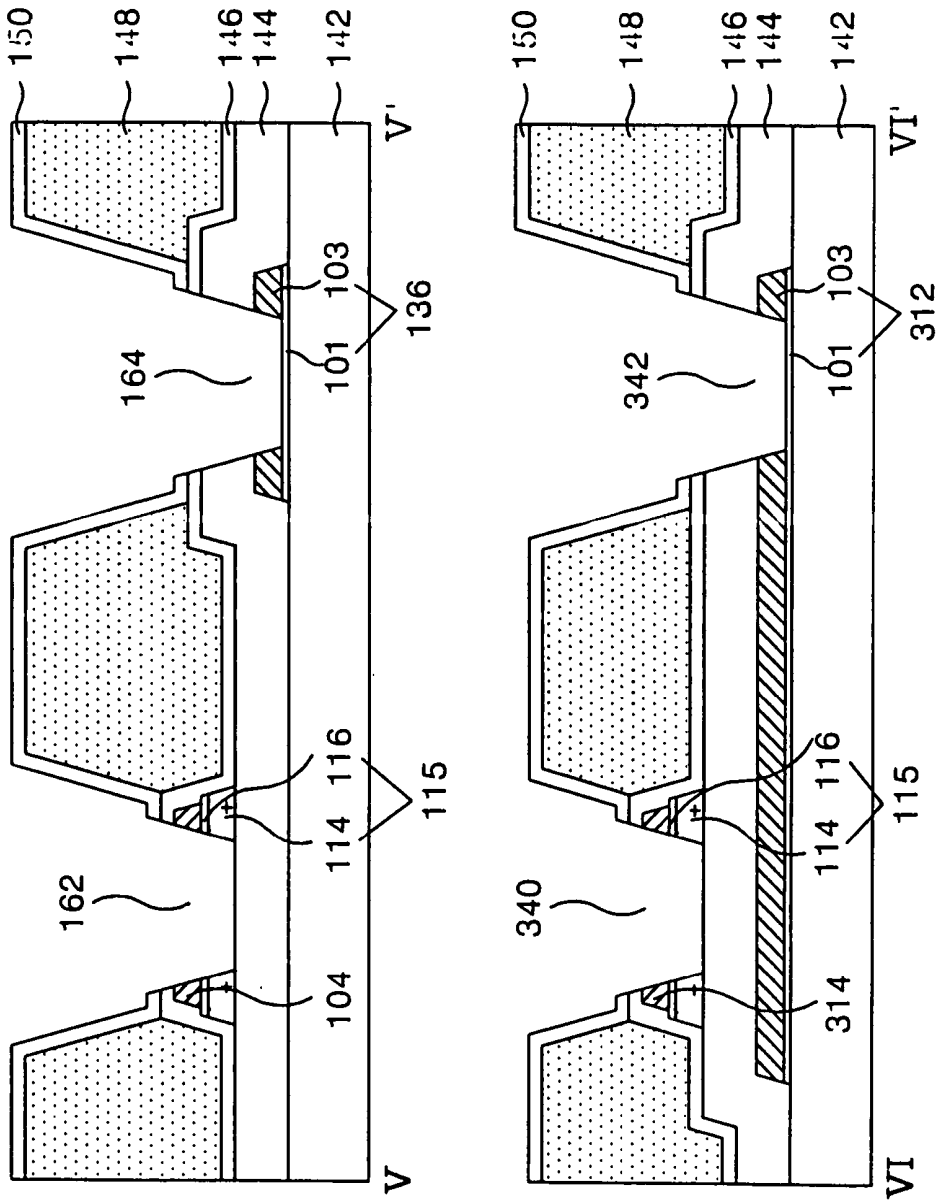


FIG. 18A

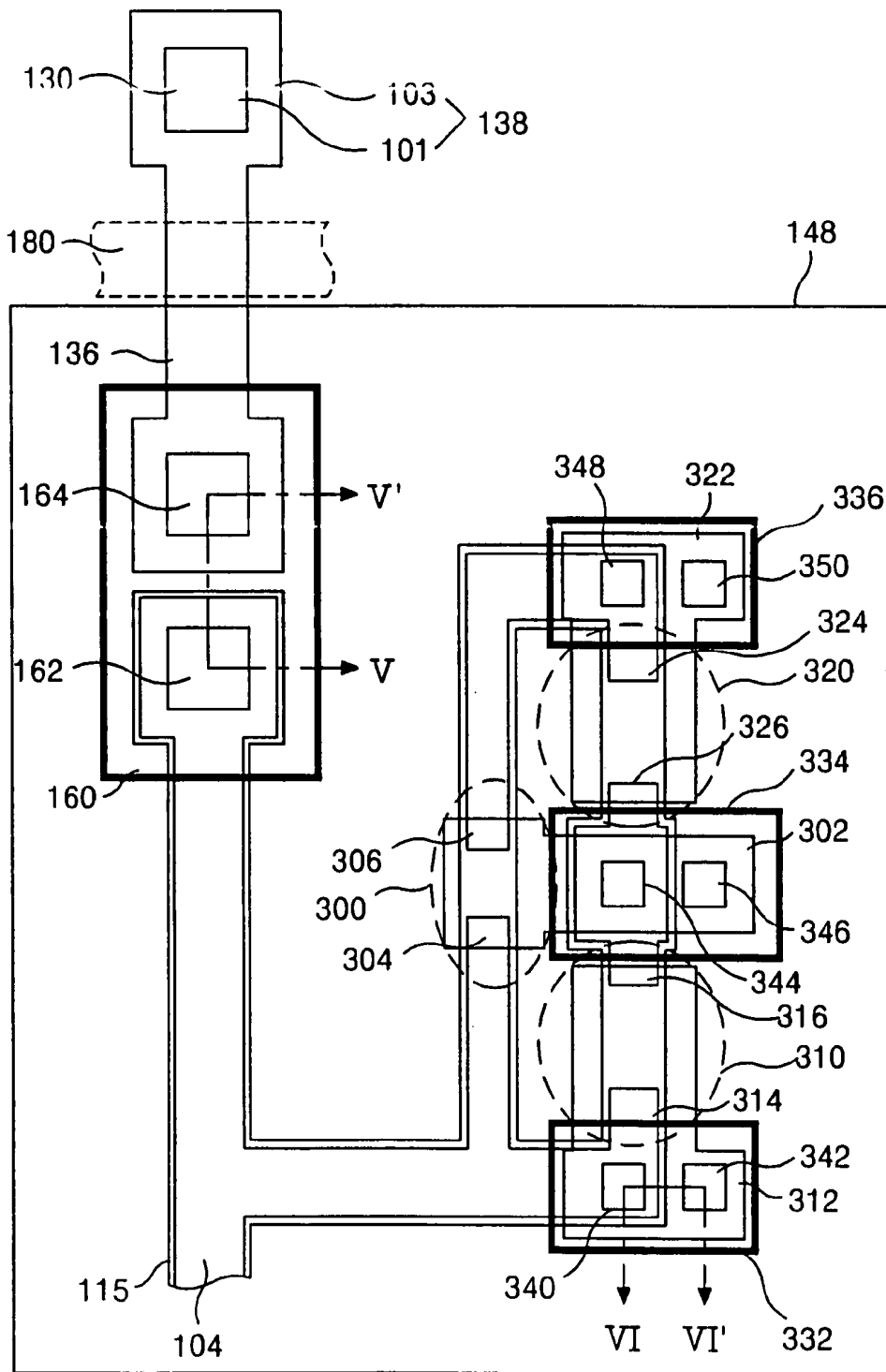
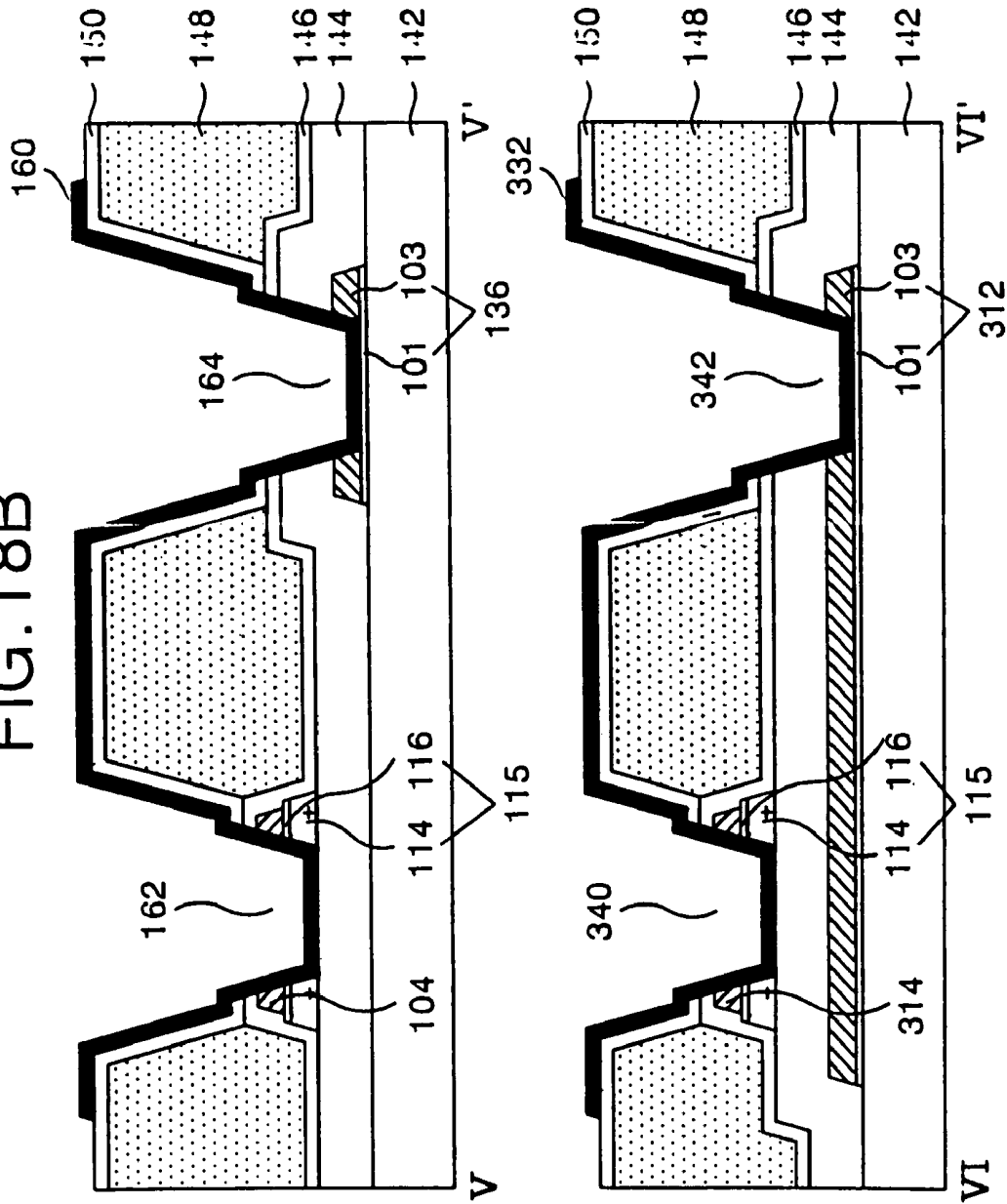
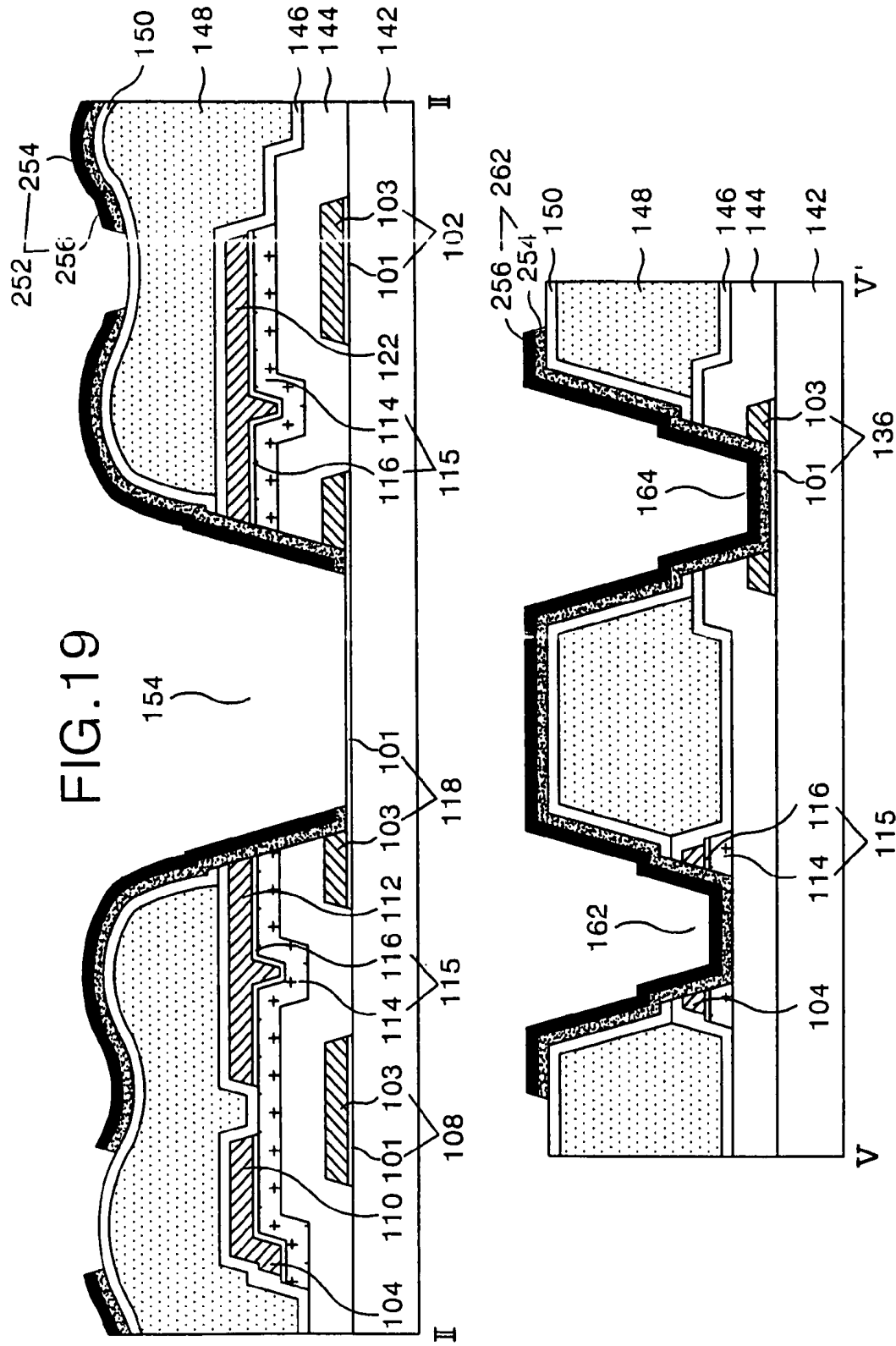


FIG. 18B





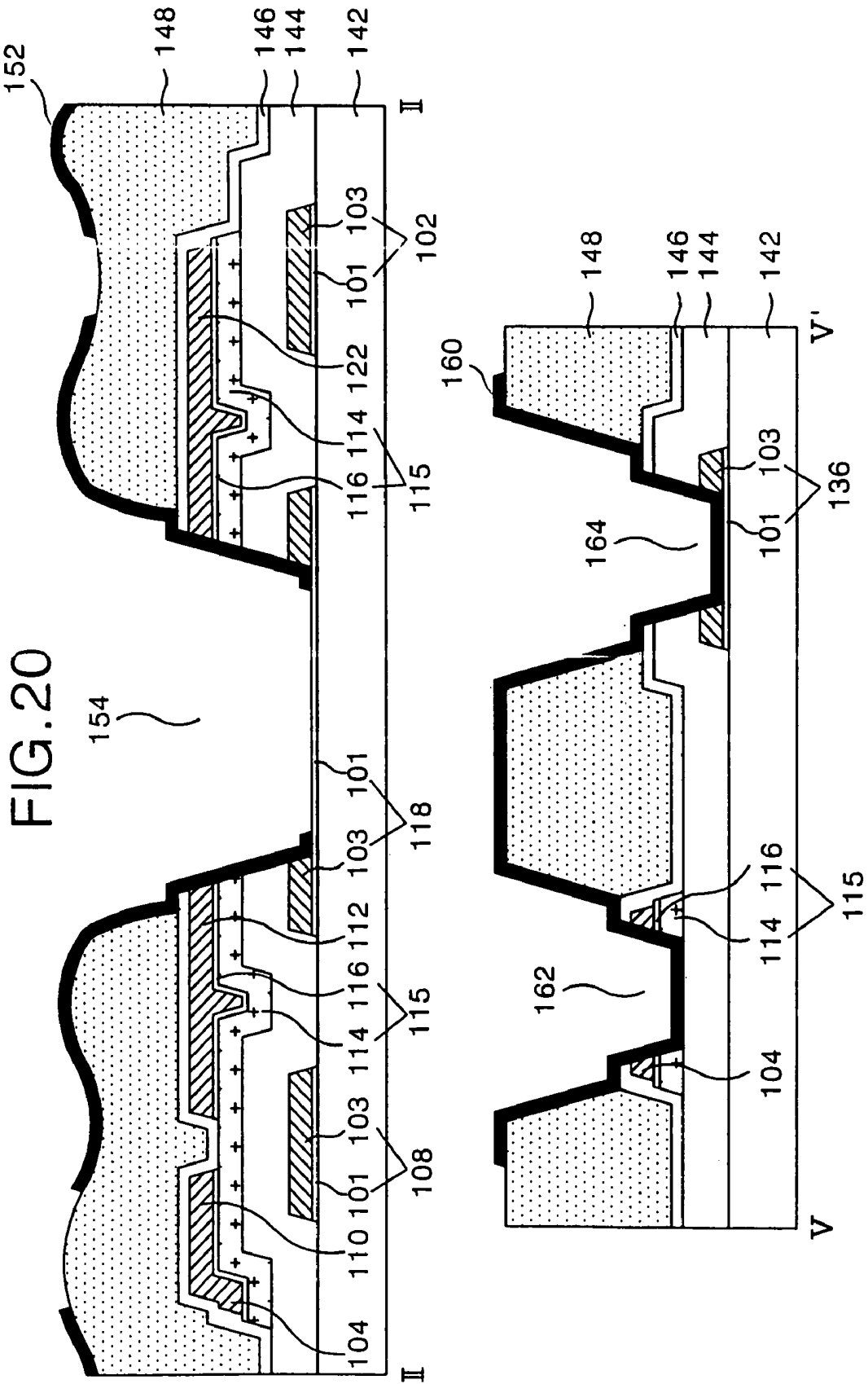


FIG. 21A

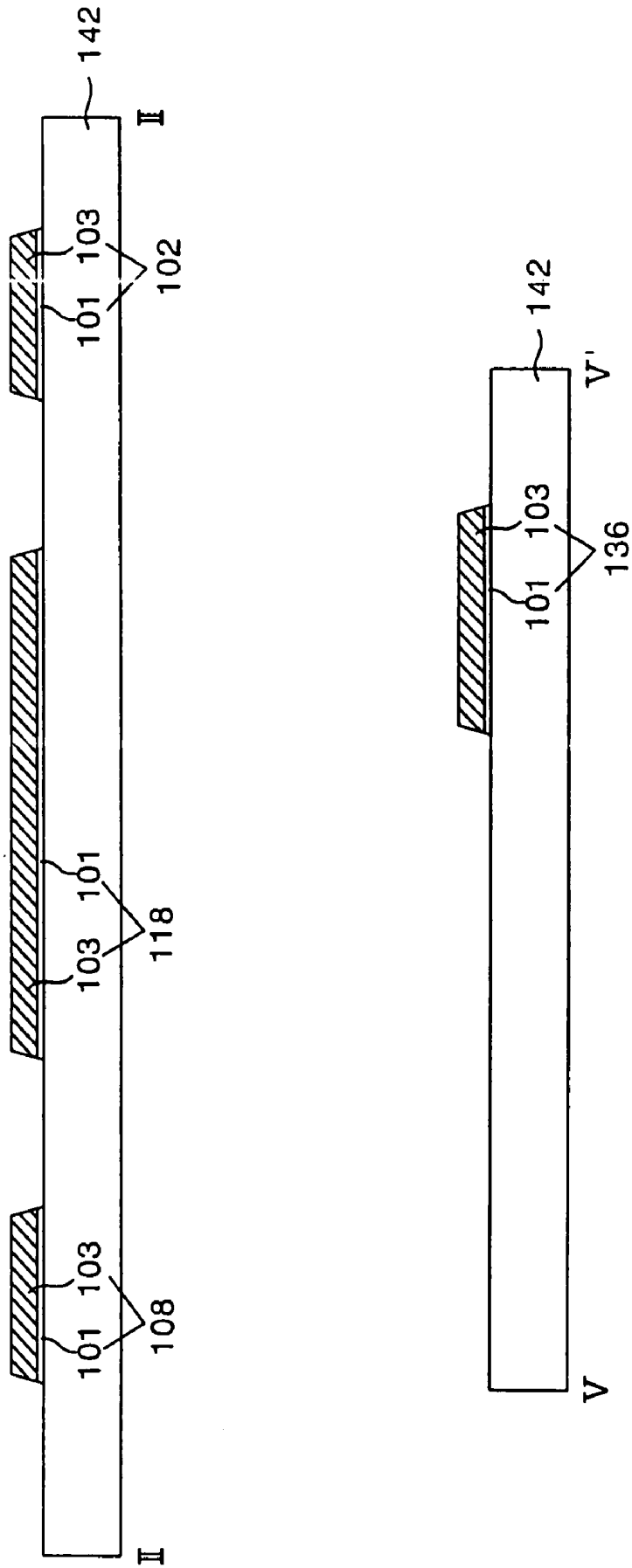


FIG. 21B

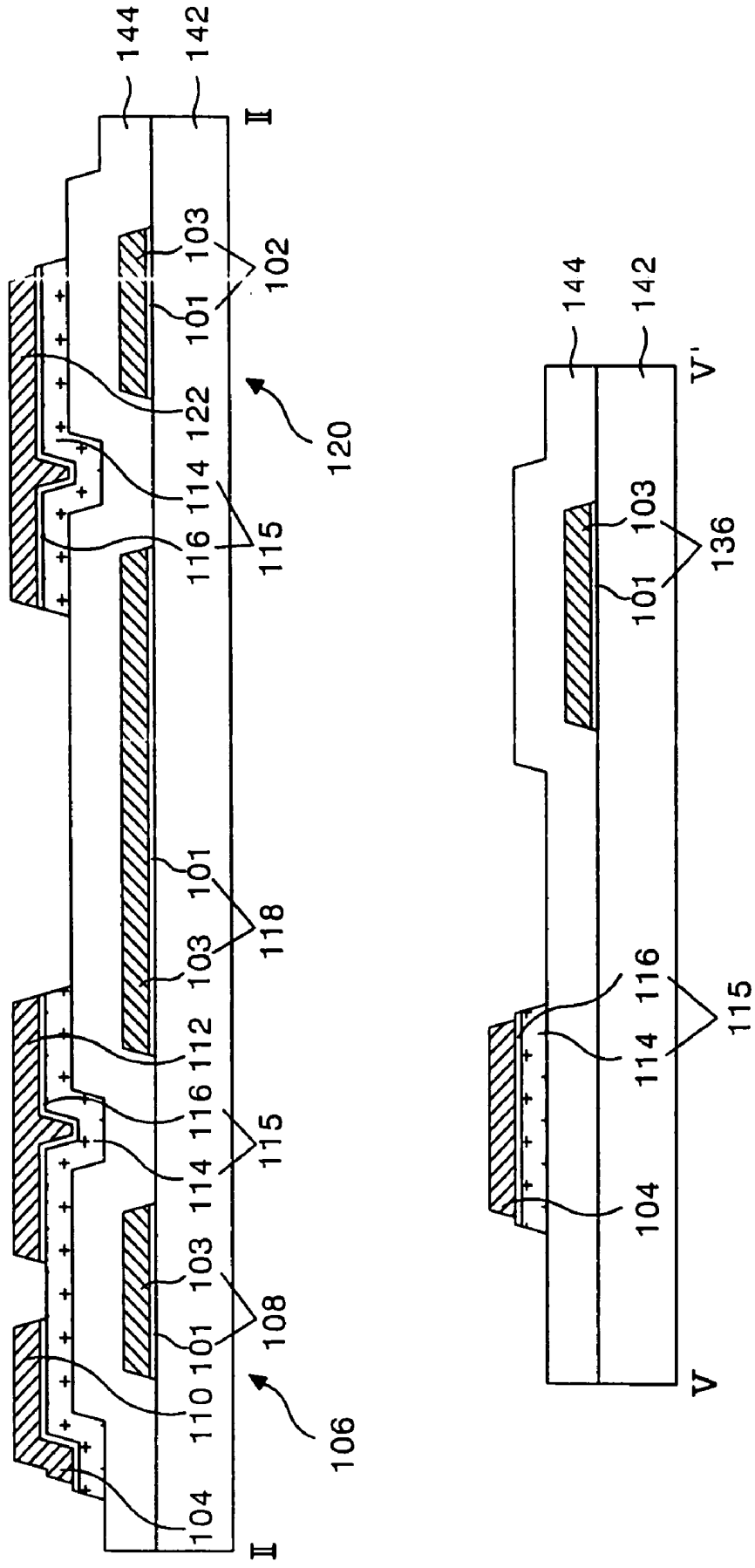
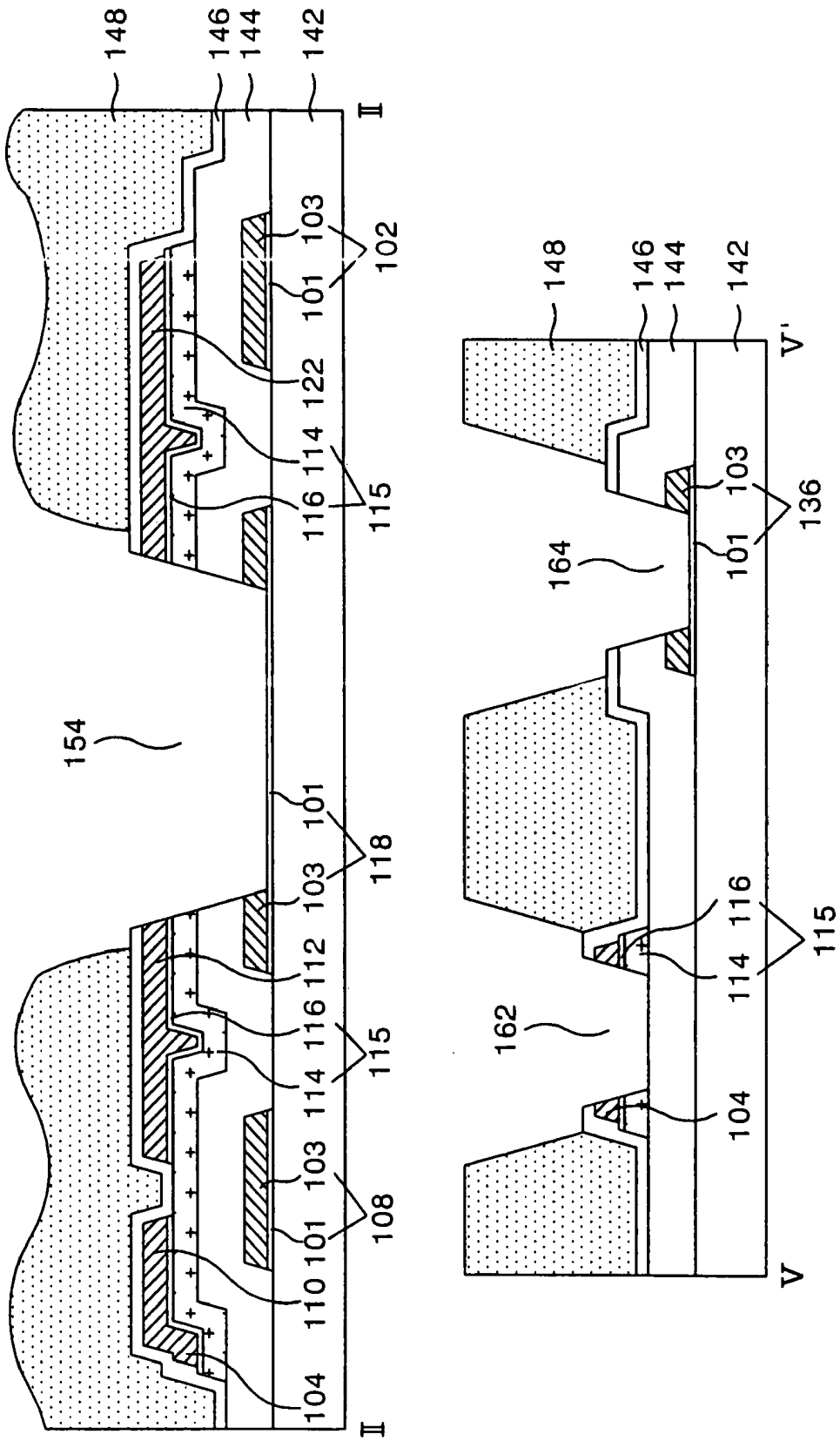
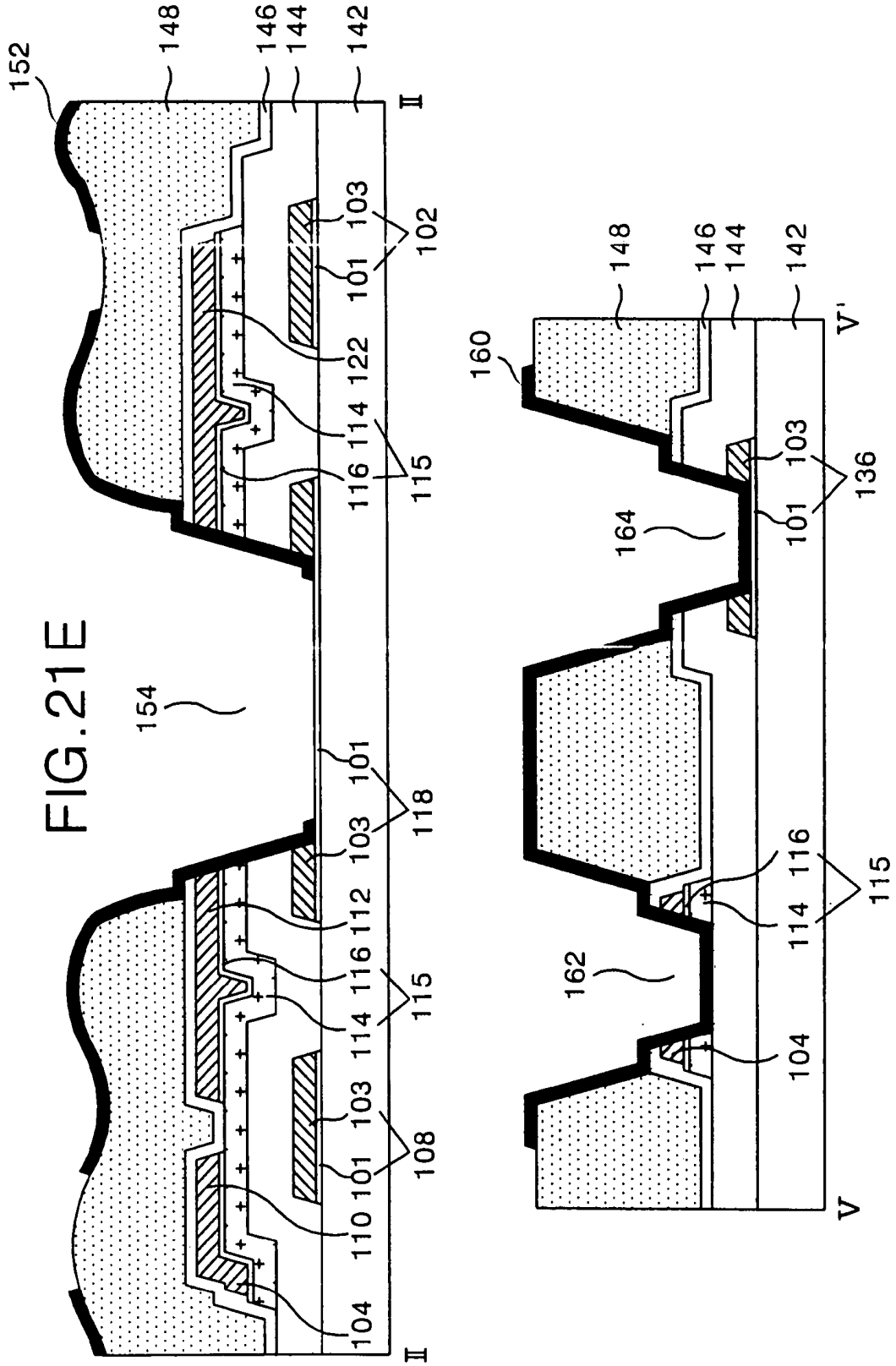


FIG. 21D





LIQUID CRYSTAL DISPLAY DEVICE AND METHOD OF FABRICATING SAME

This application is a divisional of U.S. patent application Ser. No. 11/142,315, filed Jun. 2, 2005, now U.S. Pat. No. 7,583,337, which claims the benefit of the Korean Patent Application No. P2004-041141, filed on Jun. 5, 2004, all of which are hereby incorporated by reference for all purposes as if fully set forth herein.

BACKGROUND OF THE INVENTION

1. Field of the Invention

The present invention relates to a transreflective liquid crystal display device and method of fabricating same.

2. Description of the Related Art

Liquid crystal display devices are generally classified into two types: the transmissive type in which pictures are displayed using light supplied from a backlight unit, and the reflective type in which pictures are displayed using light reflected from an external source, such as natural light. There is a problem that the power consumption of a backlight unit is high in the transmissive type and the reflective type depends on the external light so as not to be able to display the picture in a dark environment.

In order to resolve such a problem, a transreflective liquid crystal display device is on the rise, wherein the transreflective liquid crystal can be selected to be in a transmissive mode where the backlight unit is used or in a reflective mode where the external light is used. The transreflective liquid crystal display device operates in the reflective mode if the external light is sufficient and in the transmissive mode if the external light is not sufficient, thus it might be able to reduce the power consumption more than the transmissive liquid crystal display device and it is not restricted by the external light, which is different from the reflective liquid crystal display device.

Generally, a transreflective liquid crystal display panel, as shown in FIG. 1, includes a color filter substrate and a thin film transistor substrate which are bonded together with a liquid crystal layer (not shown) between them, and a backlight unit arranged behind the thin film transistor substrate. Each pixel of the transreflective liquid crystal display panel is divided into a reflective area where a reflective electrode 28 is formed, and a transmissive area where the reflective electrode 28 is not formed.

The color filter substrate includes a black matrix (not shown) and a color filter 54 formed on an upper substrate 52, and a common electrode 56 and an alignment film (not shown) formed there over.

The thin film transistor substrate includes a gate line 4 and a data line (not shown) formed on a lower substrate 2 that define each pixel area; a thin film transistor connected to the gate line 4 and the data line; a pixel electrode 32 formed at the pixel area and connected to the thin film transistor; and a reflective electrode 28 formed at a reflective area of each pixel to overlap the pixel electrode.

The thin film transistor includes a gate electrode 6 connected to the gate line 4; a source electrode 16 connected to the data line; a drain electrode 18 facing the source electrode 16; an active layer that overlaps the gate electrode 6 with a gate insulating film 8 there between to form a channel between the source and drain electrodes 16, 18; and an ohmic contact layer 12 to cause the active layer 10 to be in ohmic-contact with the source and drain electrodes 16 and 18. The thin film transistor responds to a scan signal of the gate line 4 to cause a video signal on the data line to be charged and maintained in the pixel electrode 32.

The reflective electrode 28 reflects an external light that is incident through a color filter substrate, toward the color filter substrate. The surface of the organic film 24 formed under the reflective electrode 28 has an embossed or raised shape, therefore the reflective electrode 28, which is formed on top of the organic film, also has an embossed shape. As a result, the reflection efficiency of the reflective electrode 28 increases due to the dispersion effect of the embossed surface.

When a pixel signal is applied to the pixel electrode 32 through the thin film transistor, a potential difference between a common electrode 56 and the pixel electrode 28 is generated. The potential difference causes a liquid crystal having dielectric anisotropy to rotate, thereby controlling the transmissivity of the light that runs through the liquid crystal layer in both the reflective and transmissive areas, thus its brightness is changed in accordance with the video signal.

In this case, a transmission hole 36 is formed in a relatively thick organic film 24 at a transmissive area so that the length of the light path going through the liquid crystal layer is the same in the reflective area as in the transmissive area. As a result, the length of the path RL that ambient light incident to the reflective area travels is the same as the length of the path TL that transmitted light from the backlight unit 60, thus the transmission efficiency is the same in both the reflective and transmissive modes.

The thin film transistor substrate further includes a storage capacitor connected to the pixel electrode 32 in order to stably maintain the video signal supplied to the pixel electrode 32. The storage capacitor is formed by having a storage upper electrode 20 overlap the gate line 4 with a gate insulating film there between, wherein the storage upper electrode 20 is connected to the pixel electrode 32. The ohmic contact layer 12 and the active layer 10 further overlap under the storage upper electrode 20 in the process.

The thin film transistor substrate further includes a first passivation film 22 between the thin film transistor and the organic film 24; a second passivation film between the organic film 24 and the reflective electrode 28; and a third passivation film 30 between the reflective electrode 28 and the pixel electrode 32. Accordingly, the pixel electrode 32 is connected to the drain electrode 18 and the storage upper electrode 20 through each of the first and second contact holes 34, 38 that penetrate the first to third passivation films 22, 26, 30, an organic film 24 and the reflective electrode 28.

In such a transreflective liquid crystal display panel, the thin film transistor substrate includes the semiconductor process and requires a plurality of mask processes, thus its manufacturing process is complicated so that it becomes a material cause for the increase of the liquid crystal display panel manufacturing cost. Hereinafter, a fabricating method of the transreflective thin film transistor substrate will be described in reference with FIGS. 2A to 2F.

Referring to FIG. 2A, a gate metal layer is formed on the lower substrate 2 using a deposition method such as sputtering. Subsequently, the gate metal layer is patterned with a first mask using a photolithography process and an etching process, thereby forming the gate pattern including the gate line 4 and the gate electrode 8. The gate metal layer is a single layered or double layered metal such as Al, Mo, Cr.

Next, the gate insulating film 8 is formed on the substrate 2 where the gate pattern is formed, and a source/drain pattern is formed on top thereof using a second mask process as illustrated in FIG. 2B. The source/drain pattern includes the data line, the source electrode 16, the drain electrode 18 and the storage upper electrode 20.

The gate insulating film 8, an amorphous silicon layer 10, an amorphous silicon layer with impurities doped thereto 12,

and the source/drain metal layer are sequentially formed on the lower substrate **2** where the gate pattern is formed. The gate insulating film **8** is an inorganic insulating material such as silicon oxide SiO_x or silicon nitride SiN_x, and the source/drain metal layer is a single or double layered metal structure such as Al, Mo and the like.

A photo resist pattern is formed on top of the source/drain metal layer using a second mask and a photolithography process. During this process, a diffractive exposure mask with a diffractive exposure part at a channel part of the thin film transistor is used as the second mask, thus the photo resist pattern of the channel part is made to have a lower height than the source/drain pattern part.

There after, the source/drain metal layer is patterned by wet etching using the photo resist pattern to form the source/drain pattern that includes the data line, the source electrode **16**, the drain electrode **18** integrated with the source electrode **16**, and the storage upper electrode **20**.

Next, an amorphous silicon layer doped with the impurities and an amorphous silicon layer are simultaneously patterned by a dry etching using the same photo resist pattern, thereby forming the ohmic contact layer **12** and the active layer **10**.

After removing the photo resist pattern having relatively low height at the channel part by ashing, the source/drain pattern and the ohmic contact layer **12** of the channel part are dry etched. Accordingly, the active part **10** of the channel part is exposed to separate the source electrode **16** from the drain electrode **18**. There after, the photo resist pattern remaining on the source/drain pattern is removed using a strip process.

Referring to FIG. 2C, a first passivation film **22** is formed on the gate insulating film **8** where the source/drain pattern is formed, and an organic film **24** is formed on top thereof using a third mask process, such that the organic film **24** has first and second initial contact holes **34**, **38** and a transmission hole **36** with an embossed shaped surface.

The first passivation film **22** and the organic film **24** are sequentially formed on the gate insulating film **8** where the source/drain pattern is formed. The first passivation film **22** is of the same inorganic insulating material as the gate insulating film **8**, and the organic film **24** is of a photosensitive organic material such as acrylic resin.

Then, the organic film **24** is patterned using the third mask, thereby forming first and second open holes **35**, **37** and the transmission hole **36** which penetrate the organic film **24** in correspondence to the transmissive part of the third mask. The third mask has a structure where a shielding part and a diffractive exposure part repeat at the rest area except for the transmissive part. The organic film **24** remaining in correspondence thereto is patterned to have a structure that a shielding area (projected part) and a diffractive exposure area (groove part) having a stepped difference are repeated. Subsequently, the organic film **24** where the projected part and the groove part are repeated is cured so that the surface of the organic film **24** has the embossed shape.

Referring to FIG. 2D, a second passivation film **26** is formed on the organic film **24**, and the reflective electrode **28** is formed on top thereof using a fourth mask process. The second passivation film **26** and the reflective metal layer are deposited to maintain their embossed shape on top of the organic film **24** that has the same embossed surface. The second passivation film **26** is an inorganic insulating material such as the first passivation film **22**, and the reflective metal layer is a metal with high reflectivity such as AlNd.

Subsequently, the reflective metal layer is patterned using a fourth mask and etching process, thus the reflective electrode **28** is formed, wherein the reflective electrode is independent

every pixel and is opened at the transmission hole **36** and the first and second open holes **35**, **37** of the organic film **24**.

Referring to FIG. 2E, a third passivation film **30** covering the reflective electrode **28** is formed using a fifth mask process, and first and second contact holes **34**, **38** penetrating the first to third passivation films **22**, **26**, **30** are formed. The third passivation film **30** the reflective electrode **28** and the first and second contact holes **34**, **38** are formed with the fifth mask using photolithography and etching processes, such that the first and second contact holes **34**, **38** penetrate the first to third passivation films **22**, **26**, **30** at the first and second open holes **35**, **37** of the organic film **24**. The first and second contact holes **34**, **38** each expose the drain electrode **18** and the storage upper electrode **20**. The third passivation film is of the same inorganic insulating material as the second passivation film.

Referring to FIG. 2F, a pixel electrode **32** is formed on the third passivation film **30** by use of a sixth mask process. More specifically, a transparent conductive layer is formed on the third passivation film **30** using a deposition method such as sputtering, and the transparent conductive layer is patterned by the photolithography process using a sixth mask and the etching process to form the pixel electrode at each pixel area. The pixel electrode **32** is connected to the drain electrode **18** and the storage upper electrode **20** through the first and second contact holes **34** and **38**. The transparent conductive layer is of indium tin oxide ITO.

Accordingly, the related art transfective thin film transistor substrate is formed using six 6 different mask processes, thus there is a disadvantage that its manufacturing process is complicated. Further, the margin of the first and second contact holes **34**, **38** should be secured sufficiently in order for the pixel electrode **32** to be connected to the drain electrode **18** and the storage upper electrode **20** in the related art transfective thin film transistor substrate. Because of this, there is a disadvantage that the aperture ratio of the transmissive area is reduced.

SUMMARY OF THE INVENTION

Accordingly, the present invention is directed to a transfective liquid crystal display device and method of manufacturing same that that substantially obviates one or more of the problems due to limitations and disadvantages of the related art.

Accordingly, an advantage of the present invention is to provide a transfective thin film transistor substrate with increased aperture ratio in a transmissive area, and a simplified method of fabricating same.

Additional features and advantages of the invention will be set forth in the description which follows, and in part will be apparent from the description, or may be learned by practice of the invention. The objectives and other advantages of the invention will be realized and attained by the structure particularly pointed out in the written description and claims hereof as well as the appended drawings

To achieve these and other advantages an in accordance with the purpose of the present invention, as embodied and broadly described, a liquid crystal display device, comprising: a gate line; a first insulating film on the gate line; a data line crossing the gate line to define a pixel region, the pixel region having a transmissive area and a reflective area; a thin film transistor connected to the gate line and the data line; a pixel electrode formed in the pixel region; a second insulating film on the thin film transistor; a storage capacitor including a storage upper electrode overlapping the gate line; a transmission hole exposing at least a portion of the pixel electrode,

and a reflective electrode formed in the reflective area of the pixel region, the reflective electrode connecting the pixel electrode with thin film transistor and the storage upper electrode, wherein the gate line and the pixel electrode include a first transparent conductive layer.

In another aspect of the present invention, a method of fabricating a liquid crystal display device is provided, comprising: forming a gate pattern including a first transparent conductive layer using a first mask, the gate pattern including a pixel electrode, a gate electrode and a gate line; forming a first insulating film on the gate pattern; forming a semiconductor layer and a source/drain pattern on the first insulating film using a second mask, the source/drain pattern having a storage upper electrode, a drain electrode, a source electrode, and a data line; forming a second insulating film over the source/drain pattern having an aperture portion using a third mask; forming a transmission hole exposing the first transparent conductive layer of the pixel electrode using a fourth mask; and forming a reflective electrode in a reflective area using a fifth mask; the reflective electrode connecting the pixel electrode with the drain electrode and the storage upper electrode through the transmission hole.

In another aspect of the present invention, a method of fabricating a liquid crystal display device is provided, comprising: forming a gate pattern having a first transparent conductive layer and a second opaque second conductive layer using a first mask, the gate pattern including a pixel electrode, a gate electrode and a gate line; forming a first insulating film and a semiconductor layer on the gate pattern, and a source/drain pattern having a storage upper electrode, a drain electrode, a source electrode, a data line using a second mask; forming a transmission hole exposing the first conductive layer of the pixel electrode in a transmission area using a third mask; forming a second insulating film over the source/drain pattern using a fourth mask; and forming a reflective electrode in a reflective area using a fifth mask, the reflective electrode connecting the pixel electrode with the drain electrode and the storage electrode through the transmission hole.

It is to be understood that both the foregoing general description and the following detailed description are exemplary and explanatory and are intended to provide further explanation of the invention as claimed.

BRIEF DESCRIPTION OF THE DRAWINGS

The accompanying drawings, which are included to provide further understanding of the invention and are incorporated in and constitute a part of this specification, illustrate embodiments of the invention and together with the description serve to explain the principles of the invention.

In the drawings:

FIG. 1 is a sectional diagram illustrating a part of a related art transfective liquid crystal display panel;

FIGS. 2A to 2F are sectional diagrams illustrating a method of fabricating a transfective thin film transistor substrate according to the related art;

FIG. 3 is a plane view illustrating a transfective thin film transistor substrate according to an embodiment of the present invention;

FIG. 4 is a sectional diagram illustrating the transfective thin film transistor substrate shown in FIG. 3, taken along the line II-II', III-III', IV-IV';

FIGS. 5A and 5B illustrate a plane view and a sectional diagram, respectively, of a first mask process according to an embodiment of the present invention;

FIGS. 6A and 6B illustrate a plane view and a sectional diagram, respectively, of a second mask process according to an embodiment of the present invention;

FIGS. 7A to 7E are sectional diagrams further illustrating a second mask process of the present invention;

FIGS. 8A and 8B illustrate a plane view and a sectional diagram, respectively, of a third mask process according to an embodiment of the present invention;

FIGS. 9A and 9B illustrate a plane view and a sectional diagram, respectively, of a fourth mask process according to an embodiment of the present invention;

FIGS. 10A and 10B illustrate a plane view and a sectional diagram, respectively, of a fifth mask process according to an embodiment of the present invention;

FIG. 11 is a plane view illustrating the transfective thin film transistor substrate according to the present invention, with a surrounding part centered;

FIG. 12 is a plane view illustrating a static electricity prevention device area and a contact area of a data link and a data line shown in FIG. 11;

FIG. 13 is sectional diagram illustrating the transfective thin film transistor substrate shown in FIG. 12, taken along the line V-V' and VI-VI';

FIGS. 14A and 14B illustrate a plane view and a sectional diagram, respectively, of a first mask process according to another embodiment of the invention;

FIGS. 15A and 15B illustrate a plane view and a sectional diagram, respectively, of a second mask process according to the other embodiment of the invention;

FIGS. 16A and 16B illustrate a plane view and a sectional diagram, respectively, of a third mask process according to the other embodiment of the invention;

FIGS. 17A and 17B illustrate a plane view and a sectional diagram, respectively, of a fourth mask process according to the other embodiment of the invention;

FIGS. 18A and 18B illustrate a plane view and a sectional diagram, respectively, of a fifth mask process according to the other embodiment of the invention;

FIG. 19 is a sectional diagram illustrating the thin film transistor substrate according to another embodiment of the present invention;

FIG. 20 is a sectional diagram illustrating the thin film transistor substrate according to another embodiment of the present invention; and

FIGS. 21A to 21E are sectional diagrams illustrating a method of fabricating of the transfective thin film transistor substrate illustrated in FIG. 20.

DETAILED DESCRIPTION OF THE ILLUSTRATED EMBODIMENT

Reference will now be made in detail to embodiments of the present invention, examples of which are illustrated in the accompanying drawings.

FIG. 3 is a plane view illustrating a transfective thin film transistor substrate according to the present invention, and FIG. 4 is a sectional diagram illustrating the transfective thin film transistor substrate illustrated in FIG. 3, taken along the line II-II', III-III', IV-IV'.

Referring to FIGS. 3 and 4, the transfective thin film transistor substrate includes a gate line 102 and a data line 104 that define a pixel area on a lower substrate 142 by crossing each other with a gate insulating film 144 there between; a thin film transistor 106 connected to the gate line 102 and the data line 104; a reflective electrode 152 formed in a reflective area of each pixel; and a pixel electrode 118 formed at each pixel area and connected to the thin film transistor 106

through the reflective electrode **152**. The transfective thin film transistor substrate also includes a storage capacitor **120** that is formed by the overlapping of the previous stage gate line **102** and a storage upper electrode **122** connected to a pixel electrode **118** through a reflective electrode **152**; a gate pad **128** connected to the gate line **102**; and a data pad **138** connected to the data line **104**. The transfective thin film transistor substrate divides each pixel area into a reflective area where the reflective electrode **152** is formed and a transmissive area where the reflective electrode **152** is not formed.

The thin film transistor **106** includes a gate electrode **108** connected to the gate line **102**; a source electrode **110** connected to the data line **104**; a drain electrode **112** facing the source electrode **110** to be connected to the pixel electrode **118**; an active layer **114** that overlaps the gate electrode **108** with a gate insulating film **144** therebetween to form a channel between the source electrode **110** and the drain electrodes **112**; and an ohmic contact layer **116** formed on the active layer **114** except for a channel part so as to be in ohmic-contact with the source electrode **110** and the drain electrodes **112**.

The thin film transistor **106** responds to a scan signal on the gate line **102** to cause a video signal on the data line **104** to be charged and maintained in the pixel electrode **118**.

As illustrated in FIG. 4, the gate line **102** and the gate electrode **108** have a double layer structure including a first transparent conductive layer **101** and a second conductive metal layer **103** deposited on top of thereof. A semiconductor pattern **115** including the active layer **114** and the ohmic contact layer **116** is formed such that it overlaps the data line **104**.

The reflective electrode **152** is formed in the reflective area of each pixel to reflect external light. The reflective electrode **152** has an embossed shape corresponding to the shape of the second passivation film **150** and the organic film **148** there under. The embossed shape of the reflective electrode increases its reflection efficiency due to the dispersion effect.

The pixel electrode **118** is formed at each pixel area and connected to the drain electrode **112** through the reflective electrode **152** that goes through an edge part of a transmission hole **154**. The pixel electrode **118** has a double structure that the first and second conductive layers **101**, **103** are formed like the gate line **102**, and it is opened through the transmission hole **154** to make the first conductive layer **101** being the transparent conductive layer exposed to the transmissive area.

The pixel electrode **118** generates a potential difference with a common electrode of a color filter substrate (not shown) by the pixel signal supplied through the thin film transistor. The potential difference causes a liquid crystal having dielectric anisotropy to rotate, thereby controlling the transmissivity of the light that runs through a liquid crystal layer of each of the reflective area and the transmissive area, thus its brightness is changed in accordance with the video signal.

The transmission hole **154** is formed in the transmissive area to penetrate a gate insulating film **144** on the pixel electrode **118**, and a first passivation film **146**, an organic film **148** and a second passivation film **150** on the thin film transistor **106**. Accordingly, the length of the light path that runs through the liquid crystal layer is the same in the reflective area and the transmissive area, thus the transmission efficiency of the reflective mode and the transmissive mode is the same.

The storage upper electrode **122** connected to the pixel electrode **118** overlaps the previous gate line **102** with the gate insulating film **144** therebetween, thereby forming the storage capacitor **120**. The storage upper electrode **122** is con-

nected to the pixel electrode **118** through the reflective electrode **152** that runs through the edge part of the transmission hole **154**, and it further overlaps the semiconductor pattern **115** under the storage upper electrode **122**.

The gate line **102** is connected to a gate driver (not shown) through the gate pad **128**. The first and second conductive layers **101**, **103** of the gate line **102** are extended to form the gate pad **128**, and the first conductive layer **101** is exposed through a first contact hole **130** that penetrates from the second passivation film **150** to the second conductive layer **103**.

The data line **104** is connected to a data driver (not shown) through the data pad **138**. The data pad **138** has a double structure that the first and second conductive layers **101**, **103** are formed like the gate pad **128**, and the first conductive layer **101** is exposed through the second contact hole **140** that penetrates from the second passivation film **150** to the second conductive layer **103**. The data pad **138** is connected to the data line **104** through a separate contact electrode (not shown).

In this way, the transfective thin film transistor substrate according to this embodiment of the present invention has the pixel electrode **118** connected to the drain electrode **112** and the storage upper electrode **122** through the reflective electrode that runs through the edge part of the transmission hole **154**. Accordingly, it is not necessary to have a separate contact hole for connecting the pixel electrode **118** with the drain electrode **112** and the storage upper electrode **122**, thus the aperture ratio of the transmissive area can be increased as much.

The reflective electrode **152** is also connected to the first and second conductive layers **101**, **103** of the pixel electrode **118**. Accordingly, AlNd and ITO are connected through Mo in case that AlNd is used for the reflective electrode **152**, ITO is used for the first conductive layer **101** of the pixel electrode **118** and Mo is used for the second conductive layer **103**, thus the contact resistance of AlNd and ITO caused by the generation of Al₂O₃ might be able to be reduced.

FIGS. 5A and 5B illustrate a plane view and a sectional diagram respectively, of a first mask process according to an embodiment of the present invention. First, a gate pattern having a double layered structure is formed using a first mask (not shown), wherein the gate pattern includes a pixel electrode **118**, a data pad **138**, a gate electrode **108** connected to the gate line **102** and a gate line **102** on a lower substrate **142**. The double layered structure includes first and second conductive layers **101**, **103**.

Specifically, the first and second conductive layers **101**, **103** are formed on the lower substrate **102** using a deposition method such as sputtering. Then the first and second conductive layers **101**, **103** are patterned using a first mask formed using a photolithography process and etching process, thereby forming the gate pattern illustrated in FIGS. 5A and 5B. The gate pattern includes the gate line **102**, the gate electrode **108**, the gate pad **128**, the data pad **138**, the pixel electrode **118**. The first conductive layer **101** is a transparent conductive material such as ITO, TO, IZO, and the second conductive layer **103** is a metal material such as Mo, Ti, Cu, Al(Nd) and the like.

FIGS. 6A and 6B illustrate a plane view and a sectional diagram, respectively, of a second mask process according to an embodiment of the present invention. Referring to FIG. 6B, a gate insulating film **144** is formed on the lower substrate **142** where the gate pattern has been formed. Then, utilizing a second mask process, a source/drain pattern including a data line **104**, a source electrode **110**, a drain electrode **112**, and a storage upper electrode **122**, and a semiconductor pattern **115** including an active layer **114** and an ohmic contact layer **116**

that overlap along the rear surface of the source/drain pattern are formed on top thereof. The semiconductor pattern **115** and the source/drain pattern are formed using a single mask process by utilizing a diffractive exposure mask.

Referring to FIG. 7A, first a gate insulating film **144**, an amorphous silicon layer **105**, an amorphous silicon layer **107** doped with impurities n+ or p+, and a source/drain metal layer **109** are sequentially formed on the lower substrate **142** over the gate pattern. For example, the gate insulating film **144**, the amorphous silicon layer **105**, the amorphous silicon layer **107** doped with impurities are formed using PECVD, and the source/drain metal layer **109** is formed using sputtering. The gate insulating film **144** is an inorganic insulating material such as silicon oxide SiO_x, silicon nitride SiN_x, and the source/drain metal layer **109** is Cr, Mo, MoW, Al/Cr, Cu, Al(Nd), Al/Mo, Al(Nd)/Al, Al(Nd)/Cr, Mo/Al(NdO/Mo, Cu/Mo, Ti/Al(Nd)/Ti or the like. When the double layered structure is Al/Cr, the Al layer is formed after the Cr layer.

A photo resist **219** is spread over the source/drain metal layer **109**, and then exposed and developed using a diffractive exposure mask **210**. The diffractive exposure mask **210** includes a transparent quartz substrate **212**, a shielding layer **214** formed of a metal layer such as Cr on top thereof, and a diffractive exposure slit **216**. The shielding layer **214** is located at an area where the semiconductor pattern and the source/drain pattern is to be formed. The diffractive exposure slit **216** is located at an area where the channel of the thin film transistor is to be formed. Accordingly, after development a photo resist pattern **220** having the stepped structure illustrated in FIG. 7B is formed.

Referring to FIG. 7B, the shielding layer **214** intercepts ultra violet rays during processing, thereby leaving a first resist pattern **220A**. The diffractive exposure slit **216** diffracts the ultra-violet rays during processing thereby leaving a second photo resist pattern **220B** that is thinner than the first photo resist pattern **220A**.

The source/drain metal layer **109** is then etched using the photo resist pattern **220** to form a source/drain pattern and the semiconductor pattern **115** as illustrated in FIG. 7C. At this point in the process, the source electrode **110** and the drain electrode **112** are integrated within the source/drain pattern i.e., there is not break between the source and drain electrode.

Next, the photo resist pattern **220** is ashed using oxygen O₂ plasma. Because of the thickness of the first photo resist pattern **220A** the layers under the first photo resist pattern remains unchanged, i.e., only the thickness of the photo resist is thinned. However, the layers under the second photo resist pattern **220B** which was thinner, are removed during the etching process, thereby separating the source electrode **110** from the drain electrode **112** and exposing the active layer **114** as illustrated in FIG. 7D. Accordingly, a channel is formed in the active layer **114** between the source electrode **110** and the drain electrode **112**. In addition, both sides of the source/drain pattern are etched once more along the ashed first photo resist pattern **220A**, thus the source/drain pattern and the semiconductor pattern **115** have a fixed stepped difference in a step shape. The first photo resist pattern **220A** remaining on the source/drain pattern is removed by a strip process as in FIG. 7E.

FIGS. 8A and 8B illustrate a plane view and a sectional diagram, respectively, of a third mask process utilized to fabricate a transfective thin film transistor substrate according to an embodiment of the present invention. Referring to FIGS. 8A and 8B, a first passivation film **146** is formed on the surface of the thin film transistor substrate including the area where the source/drain pattern is formed using for example, a deposition method such as sputtering. Then an organic film

148 is formed on top thereof using for example spin coating and is then patterned using a third mask process, such that the organic film **148** has an aperture part **155** in the transmissive area and an embossed surface in the reflective area.

The first passivation film **146** is an inorganic insulating material such as the gate insulating film **144** and the organic film **148** is a photosensitive organic material such as acrylic resin. The organic film **148** is patterned using the third mask such that the aperture part **155** penetrating the organic film **148** is formed in the transmissive area in correspondence with the transmissive part of the third mask, and the organic film **148** of the pad area where the gate pad **128** and the data pad **138** are formed is removed. Further, the remaining part except for the transmission part in the third mask has a structure that the shielding part and the diffractive exposure part (or trans-reflective part) are repeated, in correspondence thereto, the organic film **148** is patterned to have a structure where the shielding area (projected part) and the diffractive exposure area (groove part) having the stepped difference are repeated in the reflective area. Subsequently, the organic film **148** with the repeated projected part and groove part is fired to form an embossed shape on the surface of the organic film **148** in the reflective area. On the other hand, the aperture part **155** of the organic film **148** has its edge part overlap the drain electrode **112** and the storage upper electrode **122**, thereby making the edge part of the storage upper electrode **122** and the drain electrode **112** projected toward the aperture part **155**.

FIGS. 9A and 9B illustrate a plane view and a sectional diagram, respectively, of a fourth mask process utilized to fabricate a transfective thin film transistor substrate according to an embodiment of the present invention. Referring to FIG. 9B, a second passivation film **150** having an embossed shape is formed on the organic film **148** using the fourth mask process, and first and second contact holes **130**, **140** and the transmission hole penetrating from the second passivation film **150** to the second conductive layer **103** of the gate pattern are formed.

Specifically, the second passivation film **150** is formed on the organic film **148** using a deposition method such as PECVD. The second passivation film **150** is of the same inorganic insulating material as the first passivation film **146**. Subsequently, the transmission hole **154** is formed in the transmissive area of each pixel where the aperture part **155** of the organic film **148** is formed and first and second contact holes **130**, **140** are formed at the pad areas. The transmission hole **154** penetrates the second passivation film **150**, the first passivation film **146**, the gate insulating film **144** and the second conductive layer **103** of the pixel electrode **118** in the aperture part **155** of the organic film **148**. Accordingly, the first conductive layer **101** of the pixel electrode **118** is exposed through the transmission hole **154**, and the second conductive layer **103** remains only at the border of the pixel electrode, where the first conductive layer **101** is unexposed. Further, the drain electrode **112** projected toward the aperture part **155** of the organic film **148** through the edge part of the transmission hole **154**, and the edge part of the storage upper electrode **122** are exposed. The first and second contact holes **130**, **140** penetrate from the second passivation film **150** to the second conductive layer **103** of the gate pad **128** and the data pad **138** on top of the gate pad **128**, the data pad **138** respectively. Accordingly, the first conductive layer **101** of the gate pad **128** and the data pad **138** is exposed through each of the first and second contact holes **130**, **140**, and the second conductive layer **103** remains only at the border where the first conductive layer **101** is unexposed.

FIGS. 10A and 10B illustrate a plane view and a sectional diagram, respectively, of a fifth mask process utilized to fab-

ricate a transfective thin film transistor substrate according to an embodiment of the present invention. Referring to FIG. 10B, a reflective metal layer is formed on the second passivation film 150 maintaining the embossed shape. The reflective metal layer is a metal that has high reflectivity, for example, AlNd. There after, the reflective metal layer is patterned by the photolithography process using the fifth mask and an etching process, thereby forming the reflective electrode 152 in the reflective area of each pixel. The reflective electrode 152 connects the drain electrode 112 with the pixel electrode 118 through the edge part of the transmission hole 154, and connects the storage upper electrode 122 with the pixel electrode 118. Accordingly, no separate contact hole is required for connecting the pixel electrode 122 with the drain electrode 112 and the storage upper electrode 122, thus the aperture ratio of the transmissive area is increased. Furthermore, the reflective electrode 152 is connected to the first conductive layer 101 of the pixel electrode 118 and to the edge part of the second conductive layer 103 Mo exposed through the edge part of the transmission hole 154, thus the contact resistance of the reflective electrode 152 AlNd and the first conductive layer 101 ITO is reduced.

The transfective thin film transistor substrate according to the present invention connects the pixel electrode 118 with the drain electrode 112 and the storage upper electrode 122 using of the reflective electrode 152, and reduces the fabrication process to a five mask process. In contrast to the related art which requires a six mask process.

FIG. 11 illustrates the ambient part of the transfective thin film transistor substrate according to an embodiment of the present invention.

The transfective thin film transistor substrate 100 shown in FIG. 11 includes a contact electrode 160 in order to connect the data pad 138 formed in the same layer as the gate pad 128 with the data line 104. In other words, the contact electrode 160 connects a data link 136 extended from the data pad 138 with the data line 104. Herein, the contact electrode 160 is formed of the same metal layer AlNd, AlNd/Mo as the reflective electrode 152 that is formed at the active area. The contact electrode 160 has a problem that it is corroded by oxidization when it is exposed to the outside, thus it is located at an area which is sealed by a sealant 180, i.e., between the sealant 180 and an active area 182.

Further, the thin film transistor substrate 100 includes an electrostatic discharging device 190 for intercepting static electricity flowing into the active area 182. The electrostatic discharging device 190 is connected to the data line 104 or the gate line 102, and composed of a plurality of thin film transistors 300, 310, 320 having a reciprocal connection relationship. The electrostatic discharging device 190 causes any over current to be discharged by having low impedance at a high voltage area by the static electricity, thereby intercepting the static electricity inflow. It does not affect a drive signal supplied through the gate line 102 or the data line 104 by having high impedance during a normal drive environment. The electrostatic discharging device 190 requires a plurality of contact electrodes for reciprocally connecting the thin film transistors 300, 310, 320. The contact electrodes are also formed of the same metal layer AlNd, AlNd/Mo as the reflective electrode 152. Accordingly, the electrostatic discharging device 190 is also formed at the area sealed by the sealant 180, i.e., between the sealant 180 and the active area 182.

FIG. 12 is a plane view illustrating the electrostatic discharging device 190 and the contact electrode 160 connected to the data line 104 shown in FIG. 11. Referring to FIG. 12, the data line 104 is connected to a data line 136 extended from the data pad 138 through a first contact electrode 160 in an

area which is to be sealed by the sealant 180. The data link 136 has a double structure including first and second conductive layers 101, 103 formed like the data pad 138 (discussed above). The first contact electrode 160 is connected to the data line 104 side by side through a third contact hole 162 that penetrates from the second passivation film 150 to the data line 104 and the semiconductor pattern 115. Further, the contact electrode 160 is connected to the data link 136 through a fourth contact hole 164 that penetrates from the second passivation film 150 to the second conductive layer 103 of the data link 136, as illustrated in FIG. 13.

The electrostatic discharging device connected to the data line 104 includes thin film transistors 300, 310, 320. The second thin film transistor 300 includes a second source electrode 304 connected to the data line 104, a second drain electrode opposite the second source electrode 304, and a second gate electrode 302 having a double layered structure overlapping the second source and drain electrodes 304, 306 with the semiconductor pattern 115 and the gate insulating film 144 there between. The double structure of the second gate electrode 302 includes first and second conductive layers 101, 103.

The third thin film transistor 310 is connected to the second source electrode 304 and the second gate electrode 302 of the second thin film transistor in a diode form. The third thin film transistor 310 includes a third source electrode 314 connected to the second source electrode 304, a third drain electrode 316 opposite the third source electrode 314, and a third gate electrode 312 overlapping the third source and drain electrodes 314, 316 with the semiconductor pattern 115 and the gate insulating film 144 there between. The third gate electrode 312, like the second, has a double layered structure including first and second conductive layers 101, 103. The third gate electrode 312 is also connected to the third source electrode 314 through the second contact electrode 332. In other words, the third contact electrode 332 is formed to lay from a fifth contact hole 340 that penetrates from the second passivation film 150 to the third drain electrode 316 and the semiconductor pattern 115, and a sixth contact hole that penetrates from the second passivation film 150 to the second conductive layer 103 of the third gate electrode 312, thereby connecting the third drain electrode 316 with the third gate electrode 312.

The fourth thin film transistor 320 is connected to the second drain electrode 306 and the second gate electrode 302 of the second thin film transistor in a diode form. The fourth thin film transistor 320 includes a fourth source electrode 324 connected to the second drain electrode 306, a fourth drain electrode 326 opposite the fourth source electrode 324, and a fourth gate electrode 322 overlapping the fourth source and drain electrodes 324, 326 with the semiconductor pattern 115 and the gate insulating film 144 there between. The fourth gate electrode 322 has a double layered structure including first and second conductive layers 101, 103. The fourth drain electrode 326 is also connected to the third drain electrode 316, and it is connected to the second gate electrode 302 through the third contact electrode 334 which is formed to lay over a seventh contact hole 344 and an eighth contact hole 346. Further, the fourth gate electrode 322 is connected to the fourth source electrode 324 through the fourth contact electrode 336 which is formed to lay over a ninth contact hole 348 and a tenth contact hole 350.

The first to fourth contact electrodes 160, 332, 334, 336 are formed of the same metal layer as the reflective electrode 152 as described above.

The transfective thin film transistor substrate having such a structure is formed using five mask processes as described above. This will be explained with reference to FIGS. 14A to 18B.

Referring to FIGS. 14A and 14B, a gate pattern is formed on the lower substrate 142 by a first mask process, wherein the gate pattern includes the data link 136 along with the data pad 138, and the second to fourth gate electrodes 302, 312, 322. The first mask process is the same as described in FIGS. 5A and 5B.

Then as illustrated in FIGS. 15A and 15B, a gate insulating film 144, a semiconductor pattern 115 including an active layer 114 and an ohmic contact layer 116, and a source/drain pattern including a data line 104, second to fourth source electrodes 304, 314, 324, second to fourth drain electrodes 306, 316, 326 are formed using a second mask process. The second mask process is the same as described in FIGS. 6A and 7E.

A first passivation film 146 and an organic film 148 on top thereof, are then formed, and the organic film 148 is patterned using a third mask process. As illustrated in FIG. 16B, the organic film 148 has third to tenth aperture parts 161, 163, 339, 341, 343, 345, 347, 349. The third mask process is the same as described in FIGS. 8A and 8B. In this case, the organic film is removed in the pad area and does not have the embossed surface at an area where the reflective electrode 152 is not formed, e.g., the pixel area.

Referring to FIGS. 17A and 17B, a second passivation film 150 is formed using a fourth mask process, and third to tenth contact holes 162, 164, 340, 342, 344, 346, 348, 350 are formed to overlap the third to tenth aperture parts 161, 163, 339, 341, 343, 345, 347, 349 of the organic film 148. The fourth mask process is the same as described in FIGS. 9A and 9B.

Referring to FIGS. 18A and 18B, first to fourth contact electrodes 160, 332, 334, 336 are formed of the same metal as the foregoing reflective electrode 152 using a fifth mask process. The fifth mask process is the same as described in FIGS. 10A and 10B.

FIG. 19 is a sectional diagram illustrating a pixel area along the line II-II' and a contact area of a data link 136 and a data line 104 along the line V-V' in a transfective thin film transistor substrate according to the second embodiment of the present invention.

The transfective thin film transistor substrate shown in FIG. 19 includes the same components as the transfective thin film transistor substrate shown in FIGS. 4 and 13 except that the reflective electrode 252 and the first contact electrode 262 are formed in a double structure of the first and second conductive layers 254, 256. Accordingly, explanation for the repeated components is to be omitted.

The first conductive layer 254 in the reflective electrode 252 and the first contact electrode 262 illustrated in FIG. 19 is the transparent first conductive layer 101 of the data link 136 and the pixel electrode 118, which has low contact resistance, such as Mo. And the second conductive layer 256 is of a metal which has high reflexivity such as AlNd. Accordingly, the second conductive layer 256 AlNd of the first contact electrode 262 and the reflective electrode 252 are directly connected to the first conductive layer 101 ITO of the data link 136 and the pixel electrode 118, thus generation of an Al₂O₃ layer is prevented. Accordingly, the contact resistance of the reflective electrode 252 and the pixel electrode 118, and the contact resistance of the first contact electrode 160 and the data link 136 are reduced.

FIG. 20 is a sectional diagram illustrating a pixel area along the line II-II' and a contact area of a data link 136 and a data

line 104 along the line V-V' in a transfective thin film transistor substrate according to a third embodiment of the present invention.

The transfective thin film transistor substrate shown in FIG. 20 includes the same components as the transfective thin film transistor substrate shown in FIGS. 4 and 13 except that the second passivation film 150 on the organic film 148 is removed. Accordingly, explanation for the repeated components is to be omitted.

The second passivation film 150 illustrated in FIGS. 4 and 13 reinforces the adhesive strength of the organic film 148 and the reflective electrode 152, but can be omitted. Referring to FIG. 20, the second passivation film 150 is omitted, the transmission hole 154 and the first to fourth contact holes 130, 140, 162, 164 are formed in the first passivation film 146 process before the organic film 148 is formed. The fabricating method of the transfective thin film transistor substrate with such a structure is as follows.

FIGS. 21A to 21E are sectional diagrams illustrating a method of fabricating a transfective thin film transistor substrate shown in FIG. 20. Referring to FIG. 21A, first a gate pattern, which includes a gate line 102, a gate electrode 108, a pixel electrode 118, and a data link 136, is formed on a lower substrate 142 using a first mask process. The gate pattern has a double layered structure including a transparent first conductive layer 101 and a second conductive layer 103. The first mask process is the same as described in FIGS. 5A and 5B.

Then a gate insulating film 144, a semiconductor pattern 115 including an active layer 114 and an ohmic contact layer 116, and a source/drain pattern including a data line 104, a source electrode 110, a drain electrode 112, and a storage upper electrode 122 are formed using a second mask process as illustrated in FIG. 21B. The second mask process is the same as described in FIGS. 6A and 7E.

Referring to FIG. 21C, a passivation film 146, which covers the source/drain pattern, is formed using a third mask process, such that there is a transmission hole 154 in a transmissive area to expose a first conductive layer of the pixel electrode, a third contact hole in a contact area to expose the side of the data line 104 by penetrating the data line 104 and the semiconductor pattern 115, and a fourth contact hole 164 to expose the first conductive layer 101 of the data link 136.

Referring to FIG. 21D, an organic film 148 is formed on the passivation film 146 using a fourth mask process, such that the organic film 148 is removed in the transmission hole 154 and the third and fourth contact holes 162, 164. Furthermore, the organic film 148 is opened in a pad area and it has an embossed surface only in the reflective area where the reflective electrode 152 is to be formed in the following process. The fourth mask process is the same as described in FIGS. 8A and 8B.

Referring to FIG. 21E, the reflective electrode 152 and a contact electrode 160 are formed using a fifth mask process. The fifth mask process is the same as described in FIGS. 10A and 10B.

As described above, the transfective liquid crystal display device and fabricating method thereof according to the present invention connects the pixel electrode with the drain electrode and the storage upper electrode using a reflective electrode that runs through the edge part of a transmission hole. Accordingly, the fabrication process of a thin film transistor substrate can be simplified to a five mask processes thereby reducing one mask process, and no separate contact hole is required to connect the pixel electrode with the drain electrode and the storage upper electrode, thus the aperture ratio of the transmissive area is increased.

Further, the transreflective liquid crystal display device and a method of fabricating same according to the present invention connects the data link and the data line, which are formed in different layers, by use of the contact electrode of the same metal as the reflective electrode, and it reciprocally connects the thin film transistors of the electrostatic discharging device. Accordingly, the fabrication process of a thin film transistor substrate can be simplified to five mask processes.

In addition, the transreflective liquid crystal display device and fabricating method thereof according to the present invention has the reflective electrode AlNd connected to the first conductive layer ITO through the second conductive layer Mo of the pixel electrode, thus it can reduce the contact resistance of the reflective electrode and the pixel electrode. Further, the reflective electrode is formed in the double structure of AlNd/Mo to enable to further reduce the contact resistance with the first conductive layer ITO of the pixel electrode.

It will be apparent to those skilled in the art that various modifications and variation can be made in the present invention without departing from the spirit or scope of the invention. Thus, it is intended that the present invention cover the modifications and variations of this invention provided they come within the scope of the appended claims and their equivalents.

What is claimed is:

1. A liquid crystal display device, comprising:
 - a gate line including a first transparent conductive layer;
 - a first insulating film on the gate line;
 - a data line crossing the gate line to define a pixel region, the pixel region having a transmissive area and a reflective area;
 - a first thin film transistor connected to the gate line and the data line;
 - a pixel electrode having a first transparent conductive layer;
 - a storage capacitor including a storage upper electrode overlapping the gate line;
 - a transmission hole exposing at least a portion of the first transparent conductive layer of the pixel electrode; and
 - a reflective electrode formed in the reflective area of the pixel region, wherein the reflective electrode is directly connected with the pixel electrode, a drain electrode of the first thin film transistor and the storage upper electrode within the transmission hole.
2. The device according to claim 1, further comprising a second conductive layer on the first transparent conductive layer of the gate line.
3. The device according to claim 1, further comprising a second conductive layer on the boundary of the first transparent conductive layer of the pixel electrode.
4. The device according to claim 2, further comprising:
 - a double layered gate pad extending from the gate line, wherein a portion of a first conductive layer of the double layered gate pad is exposed via a first contact hole by passing through the first insulating film and a second conductive layer of the double layered gate pad.
5. The device according to claim 4, further comprising:
 - a double layered data pad connected to the data line, wherein a portion of a first conductive layer of the double layered data pad is exposed via a second contact hole by passing through the gate insulating film and a second conductive layer of the double layered data pad.
6. The device according to claim 5, further comprising a second insulating film on the first thin film transistor.
7. The device according to claim 6, wherein the second insulating film is removed in the gate and data pads.

8. The device according to claim 6, further comprising a third insulating film between the first thin film transistor and the second insulating film.

9. The device according to claim 8, wherein the third insulating film is an inorganic insulating material.

10. The device according to claim 6, further comprising a third insulating film between the second insulating film and the reflective electrode.

11. The device according to claim 10, wherein the third insulating film is an inorganic insulating material.

12. The device according to claim 3, wherein the reflective electrode is directly connected to the first transparent conductive layer of the pixel electrode and substantially laterally connected to the second conductive layer of the pixel electrode through the transmission hole.

13. The device according to claim 5, further comprising:

- a double layered data link extending from the data pad; and
- a first contact electrode of the same metal as the reflective electrode connecting the data line and the data line through third and fourth contact holes exposing the data line and the data link.

14. The device according to claim 13, further comprising an electrostatic discharging device connected to one of the data and gate lines.

15. The device according to claim 14, wherein the electrostatic discharging device comprises:

- a second thin film transistor connected to one of the gate and data lines;
- a third thin film transistor connected between a gate electrode and a source electrode of the second thin film transistor in a diode form;
- a fourth thin film transistor connected between the gate electrode and a drain electrode of the second thin film transistor in a diode form;
- a second contact electrode connected to a source electrode and a gate electrode of the third thin film transistor through a fifth contact hole and a sixth contact hole exposing the source and gate electrodes;
- a third contact electrode connected to a drain electrode of the third or fourth thin film transistor and the gate electrode of the second thin film transistor through a seventh contact hole and an eighth contact hole exposing the drain and gate electrodes; and
- a fourth contact electrode connected to a source electrode and a gate electrode of the fourth thin film transistor through a ninth contact hole and a tenth contact hole exposing the source and gate electrodes of the fourth thin film transistor.

16. The device according to claim 15, wherein the second, third and fourth contact electrodes are formed of the same metal as the reflective electrode.

17. The device according to claim 15, wherein the gate electrodes have a double layered structure.

18. The device according to claim 17, wherein the fourth, sixth, eighth, tenth contact holes expose a first conductive layer of the double layered structure electrodes by passing through a second conductive layer of the gate electrodes.

19. The device according to claim 15, wherein the first to fourth contact electrodes are formed inner portion from a sealant region.

20. The device according to claim 15, wherein the reflective electrode and the first to fourth contact electrodes are formed of AlNd and Mo.

21. The device according to claim 6, wherein the insulating film has an embossed surface.

17

22. The device according to claim 21, wherein the reflective electrode has an embossed surface in a reflective area.

23. The device according to claim 6, wherein the second insulating film is an organic material.

24. The device according to claim 1, wherein the storage upper electrode substantially overlaps more than half of the gate line in the direction of the data line.

18

25. The device according to claim 1, wherein the reflective electrode connects the pixel electrode with the thin film transistor and the storage upper electrode through the transmission hole.

* * * * *

专利名称(译)	液晶显示装置及其制造方法		
公开(公告)号	US7817231	公开(公告)日	2010-10-19
申请号	US12/458959	申请日	2009-07-28
[标]申请(专利权)人(译)	AHN BYUNG CHUL JUNG TAE YONG 李积NO KWACK HEE YOUNG		
申请(专利权)人(译)	AHN BYUNG CHUL JUNG TAE YONG 李积NO KWACK HEE YOUNG		
当前申请(专利权)人(译)	LG.PHILIPS LCD CO. , LTD.		
[标]发明人	AHN BYUNG CHUL JUNG TAE YONG LEE JI NO KWACK HEE YOUNG		
发明人	AHN, BYUNG CHUL JUNG, TAE YONG LEE, JI NO KWACK, HEE YOUNG		
IPC分类号	G02F1/1335 G02F1/136 G02F1/1362 G02F1/1368		
CPC分类号	G02F1/133555 G02F1/1362 G02F2001/136231		
审查员(译)	粗鲁, TIMOTHY		
优先权	1020040041141 2004-06-05 KR		
其他公开文献	US20090290084A1		
外部链接	Espacenet USPTO		

摘要(译)

提供一种液晶显示装置,包括栅极线;栅极线上的第一绝缘膜;数据线与栅极线交叉以限定像素区域,该像素区域具有透射区域和反射区域;薄膜晶体管连接到栅极线和数据线;形成在像素区域中的像素电极;薄膜晶体管上的第二绝缘膜;存储电容器,包括与栅极线重叠的存储上电极;透射孔,其暴露像素电极的至少一部分,以及形成于像素区域中的反射区域中的反射电极,反射电极连接像素电极与薄膜晶体管和存储上电极,其中栅极线和像素电极包括第一透明导电层。

