



US006642986B2

(12) **United States Patent**
Melnik et al.

(10) **Patent No.:** **US 6,642,986 B2**
(45) **Date of Patent:** **Nov. 4, 2003**

(54) **LIQUID CRYSTAL DISPLAY DEVICE
HAVING UNIFORM INTEGRATED SPACERS**

(75) Inventors: **George A. Melnik**, Montrose, NY (US); **Lucian R. Albu**, New York, NY (US); **Peter J. Janssen**, Scarborough, NY (US); **Stefan Hausser**, Ludwigsburg (DE); **Joerg Spengler**, Sindelfingen (DE); **Karl-Heinz Kraft**, Stuttgart (DE)

(73) Assignee: **Koninklijke Philips Electronics N.V.**, Eindhoven (NL)

(*) Notice: Subject to any disclaimer, the term of this patent is extended or adjusted under 35 U.S.C. 154(b) by 269 days.

(21) Appl. No.: **09/833,718**

(22) Filed: **Apr. 13, 2001**

(65) **Prior Publication Data**

US 2002/0149734 A1 Oct. 17, 2002

(51) **Int. Cl.**⁷ **G02F 1/1345**; G02F 1/1339; G02F 1/1343

(52) **U.S. Cl.** **349/149**; 349/139; 349/155; 349/156

(58) **Field of Search** 349/139, 149, 349/155, 156

(56) **References Cited**

U.S. PATENT DOCUMENTS

3,861,783 A * 1/1975 Dill et al. 349/156

6,067,144 A * 5/2000 Murouchi 349/156
6,266,121 B1 * 7/2001 Shigeta et al. 349/156
6,465,268 B2 * 10/2002 Hirakata et al. 438/30
6,493,057 B1 * 12/2002 Sato et al. 349/153
2002/0149720 A1 * 10/2002 Janssen et al. 349/113

* cited by examiner

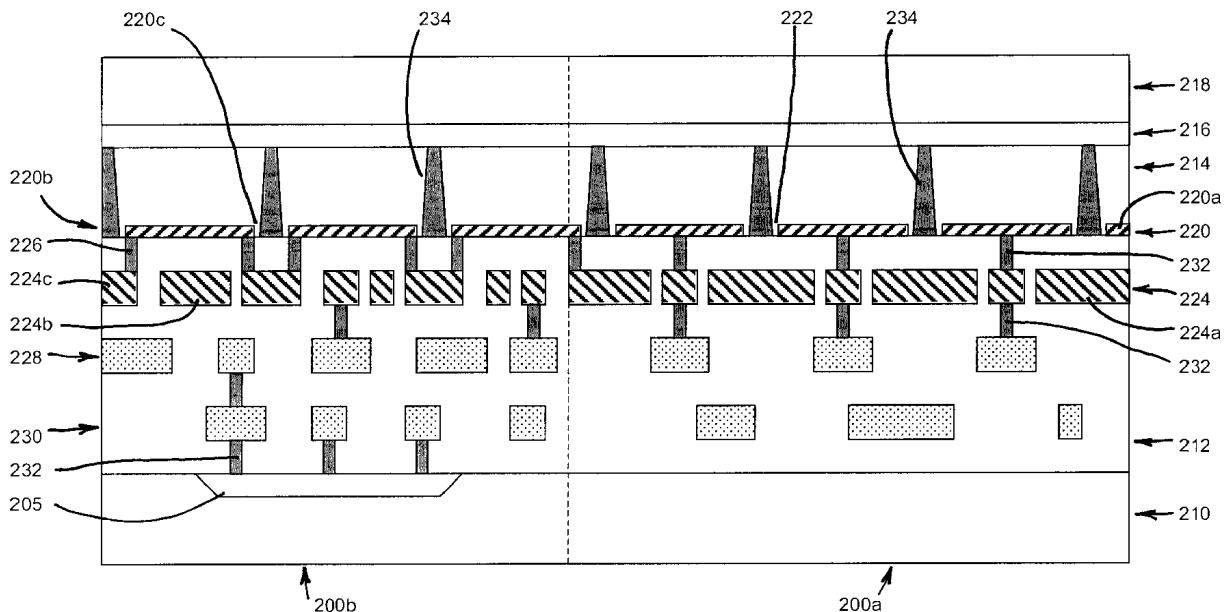
Primary Examiner—John F. Niebling
Assistant Examiner—Jennifer M. Kennedy

(57) **ABSTRACT**

A reflective liquid crystal display (LCD) device includes a plurality of openings patterned in the pixel metal layer in the peripheral region of the device exposing the insulating layer beneath, a plurality of light-shielding islands beneath the openings in the pixel metal layer, and a plurality of walls formed on the islands surrounding the openings and extending substantially between the islands and the pixel metal layer. A plurality of spacers are disposed on the exposed portions of the insulating layer in the peripheral region for supporting the transparent (e.g., glass) layer above and providing a space for the liquid crystal material. The structure enhances display uniformity by making the spacers formed in the peripheral area more closely match the spacers formed in the pixel area of the device. The structure also prevents light from reaching the substrate in the peripheral region of the device and permits portions of the second metal layer formed in the peripheral region of the device to be used for signal routing.

18 Claims, 3 Drawing Sheets

200



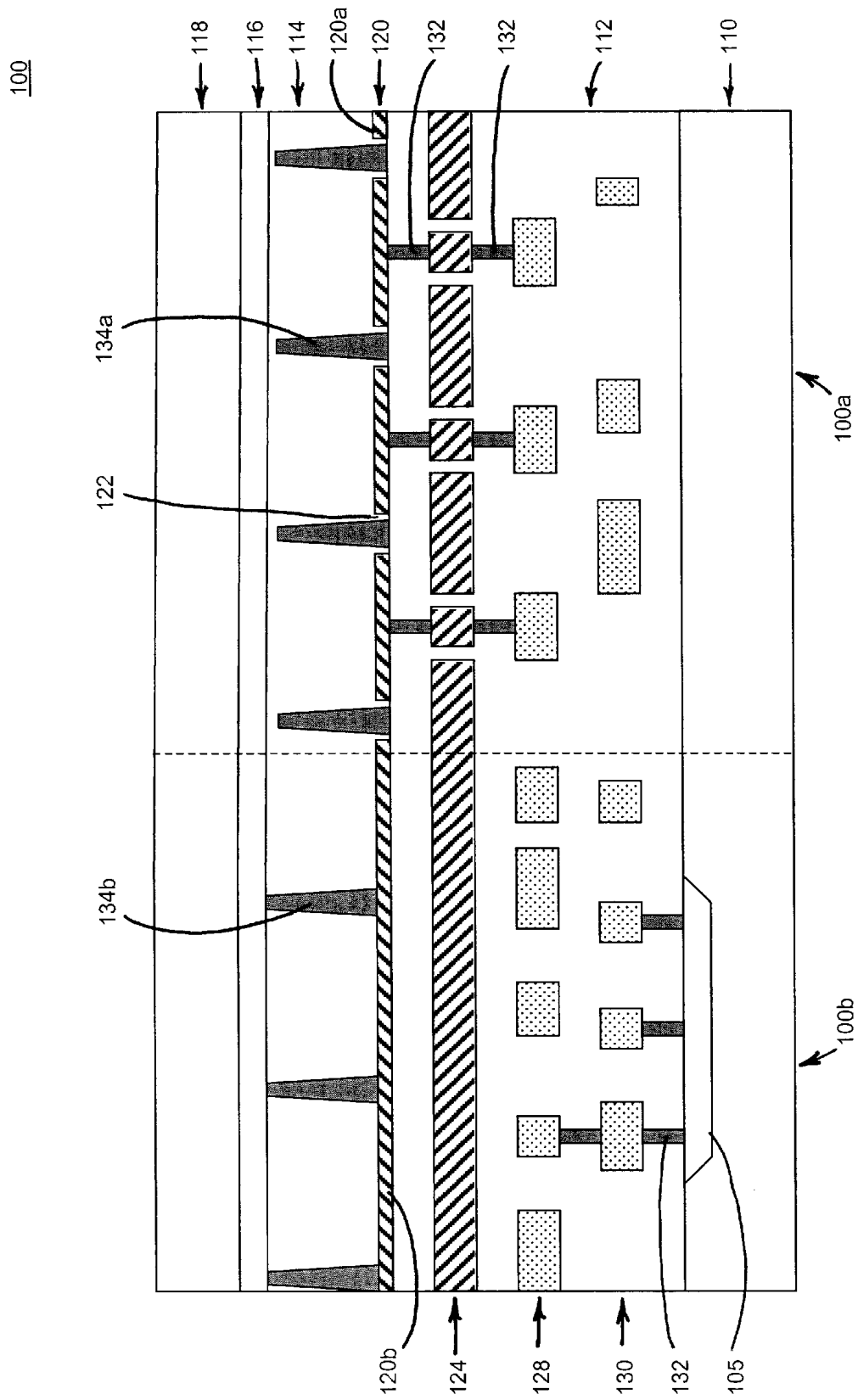


FIG. 1

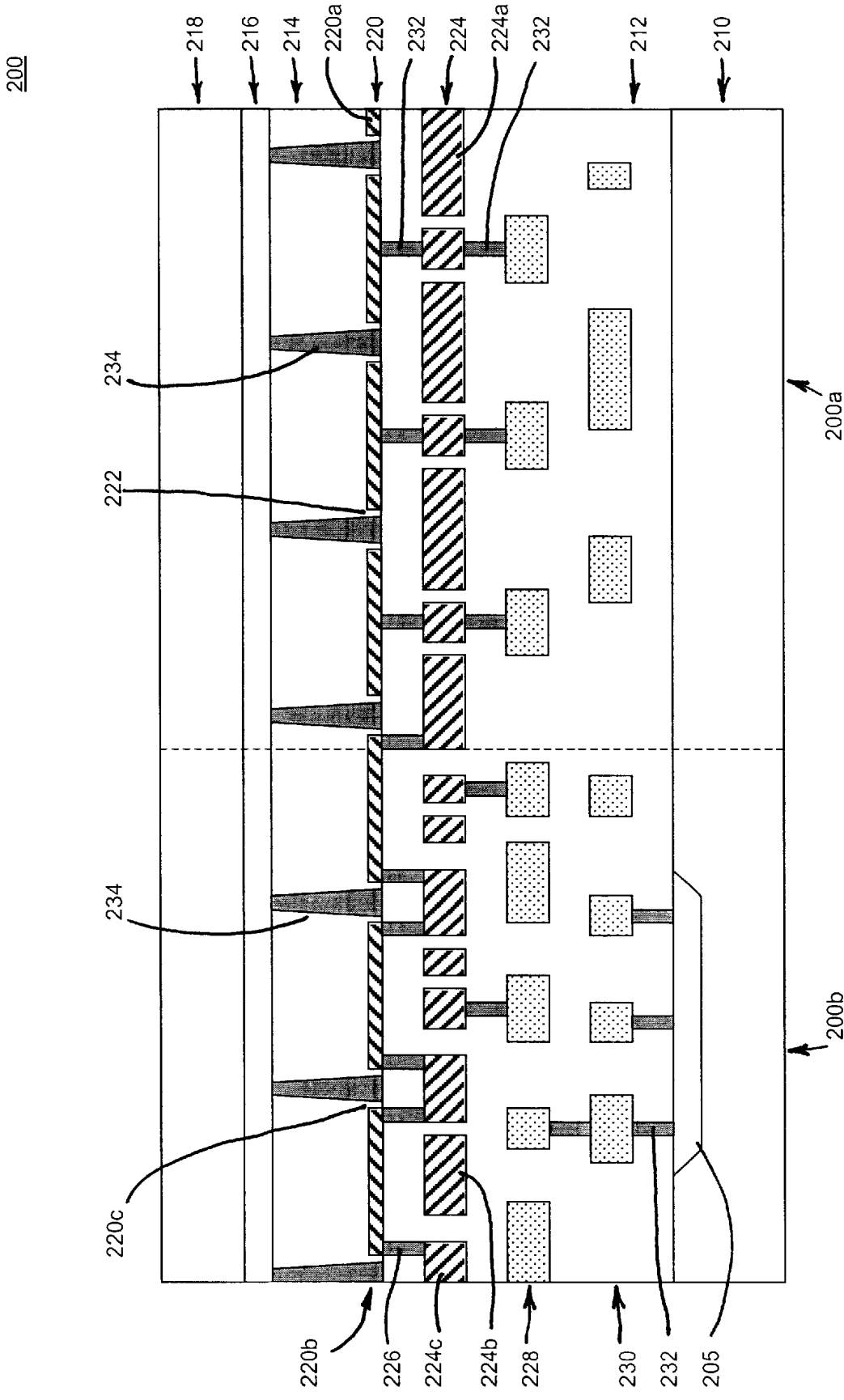


FIG. 2

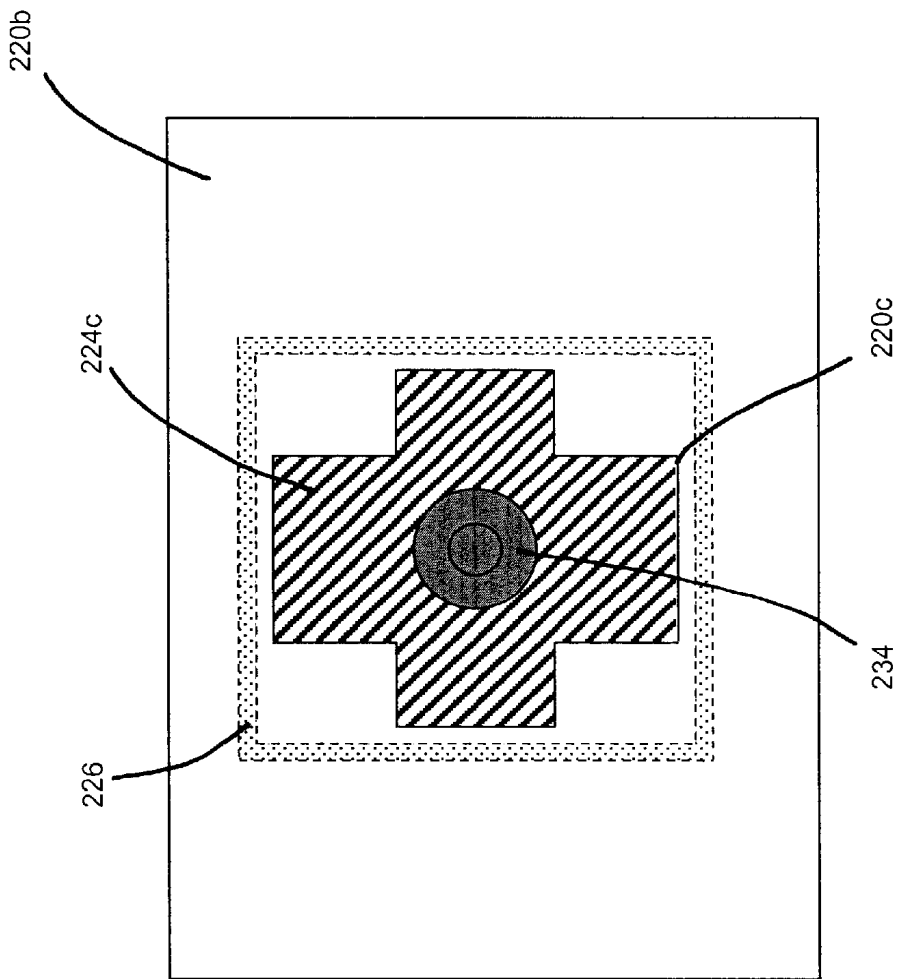


FIG. 3

LIQUID CRYSTAL DISPLAY DEVICE HAVING UNIFORM INTEGRATED SPACERS

BACKGROUND OF THE INVENTION

1) Field of the Invention

This invention pertains to the field of liquid crystal display (LCD) devices, such as liquid crystal on silicon (LCOS) devices, and more particularly to a structure for such a device providing for uniform spacers.

2) Description of the Related Art

Reflective LCD devices are well known. Examples of such devices, and in particular active matrix devices, are shown in U.S. Pat. Nos. 6,023,309 and 6,052,165. With reference to the following description, familiarity with conventional features of such devices will be assumed, so that only features bearing on the present invention will be described.

FIG. 1 shows a portion of a typical prior-art reflective LCD device **100**. The reflective LCD device **100** may generally be divided into a pixel region **100a** (active region) and a peripheral region **100b**. The pixel region **100a** includes an array of pixel elements and the peripheral region **100b** includes driver circuits **105** for supplying driving signals to each of the pixel elements.

The LCD device **100** comprises, in relevant part, a silicon substrate **110**, an insulating layer **112**, a liquid crystal layer **114**, a transparent electrode **116**, such as indium-tin-oxide (ITO), and a transparent (e.g., glass) layer **118**. A reflective mirror (pixel) metal layer **120** is provided beneath the liquid crystal layer **114** on the insulating layer **112**. The mirror metal layer **120** includes a plurality of individual reflective pixel electrodes **120a** in the pixel region **100a**, and a substantially continuous peripheral portion **120b** formed in the peripheral region **100b** of the LCD device **200**. Light transmissive regions **122** are located between the pixel electrodes **120a**.

Also provided in the insulating layer **112** and between the mirror metal layer **120** and the substrate **110** are a light shield metal layer **124** and routing metal layers, **128** and **130**. In the pixel region **100a**, the metal layers **128** and **130** form mutually-orthogonal row and column lines, which may be connected to gate and source electrodes of MOS transistors (not shown in FIG. 1) for pixel elements fabricated in the underlying substrate **110**. In the peripheral region **100b**, the metal layers **128** and **130** form signal routing lines used for routing various signals of the driver circuits. Also, metal plugs or vias **132** are provided for connecting various portions of the light shield metal layer **124** and the third and fourth metal layers **128**, **130** with each other.

The metal layer **124** is provided to prevent light entering the device, such as through the transmissive regions **122** between the pixel electrodes **120a**, from reaching the substrate **110** where it might induce leakage currents on otherwise interfere with proper device operation. While portions of metal layers **128** or **130** may incidentally block a small portion of light entering the device, the structure of FIG. 1 requires a separate metal layer **124** to be dedicated to provide the required degree of light blocking in the peripheral region **100b**.

A plurality of spacers or pillars are provided for supporting the transparent layer **118** and providing a gap for the liquid crystal layer **114**. In the pixel region **100a**, the spacers **134a** are placed directly on the insulating layer **112**. In the peripheral region **100b**, spacers **134b** are provided on the peripheral portion **120b** of the mirror metal layer **120**.

In order to maintain a uniform liquid crystal cell gap, it becomes necessary for the spacers in the peripheral region **100b** to have a height that is the same as the spacers in the pixel region **100a**. However, the spacers **134b** formed on the mirror metal layer **120** in the peripheral region **100b** are taller than the spacers **134a** formed on the insulating layer **112** in the pixel region **100a** because of the extra height of the metal layer **120**, thus producing a non-uniform display.

Accordingly, it would be desirable to provide a liquid crystal display device having spacers with a more uniform height in both the pixel and peripheral regions of a reflective LCD device. Other and further objects and advantages will appear hereinafter.

SUMMARY OF THE INVENTION

It is therefore an object of the invention to provide a liquid crystal display (LCD) device having a more uniform spacer structure.

In accordance with one aspect of the invention, an LCD device is provided having a pixel region and a peripheral region adjacent to the pixel region, comprising a silicon substrate, an insulating layer on the substrate, a first metal layer above the insulating layer including an array of pixel electrodes in the pixel region and a peripheral portion in the peripheral region having a plurality of openings therein, a plurality of spacers in the openings, a second metal layer between the first metal layer and the substrate, and a plurality of walls each corresponding to one of the plurality of openings and extending substantially between the second metal layer and the first metal layer.

BRIEF DESCRIPTION OF THE DRAWINGS

FIG. 1 shows a simplified cross-sectional view of a portion of a prior-art liquid crystal display (LCD) device;

FIG. 2 shows a simplified cross-sectional view of a portion of one embodiment of an LCD device having integrated spacers in accordance with one or more aspects of the invention; and

FIG. 3 shows a top plan view of a portion of the LCD device shown in FIG. 2.

DETAILED DESCRIPTION

FIG. 2 shows a simplified cross-sectional view of a portion of a reflective LCD device **200** in accordance with one or more aspects of the invention. For clarity, those portions of the device relating to the present invention are illustrated. The reflective LCD device **200** may generally be divided into a pixel region **200a** (active region) and a peripheral region **200b**. The pixel region **200a** includes an array of pixel elements, and the peripheral region **200b** includes driver circuits (not shown in FIG. 2) for supplying driving signals to each of the pixel elements.

The LCD device **200** comprises, in relevant part, a silicon substrate **210** on which are successively provided an insulating layer **212**, a liquid crystal layer **214**, a transparent electrode **216**, such as indium-tin-oxide (ITO), and a transparent (e.g., glass) layer **218**. A first metal layer **220** is provided on the insulating layer **212** beneath the liquid crystal layer **214**. The first metal layer **220** includes a plurality of individual reflective pixel electrodes **220a** formed in the pixel region **200a**, and a peripheral portion **220b** formed in the peripheral region **200b** of the LCD device **200**. Light transmissive regions **222** are located between the pixel electrodes **220a**. A plurality of openings **220c** are formed in the peripheral portion **220b** of the first

metal layer 220, each opening exposing a portion of the insulating layer 212.

Also, a second metal layer 224 is provided between the first metal layer 220 and the substrate 210. The second metal layer 224 includes a light shield portion 224a in the pixel region 200a, and a plurality of signal routing lines 224b and light shields 224c in the peripheral region 200b. At each of the light shields 224c is provided a light-blocking partition or wall 226 extending substantially between the light shield 224c and the peripheral portion 220b of the first metal layer 220. Third and fourth metal layers 228 and 230 are provided between the second metal layer 224 and the substrate 210. Also, metal plugs or vias 232 are provided for connecting various portions of the second, third, and fourth metal layers with each other.

A plurality of integrated spacers or pillars 234 are provided for supporting the transparent electrode 216 and transparent layer 218 and providing a gap for the liquid crystal layer 214. In the pixel region 200a, the spacers 234 are placed directly on the insulating layer 212 in the light transmissive regions 222 between the pixel electrodes 220a. In the peripheral region, the spacers 234 are located on the openings 220c in the peripheral portion 220b of the first metal layer 220. Preferably, the spacers 234 may be formed by uniformly applying a coating (e.g., Si₃N₄; SiO₂) over the first metal layer 220 and exposed insulating layer 212 to a desired height, and etching the coated material to produce the spacers 234. The height and diameter of the spacers 234 are selected to provide the desired gap for the liquid crystal layer 214, and the required strength to support the transparent layer 218. In one embodiment, the spacers 234 may have a height of 1–2 μm, and as small a diameter as 0.4 μm. Larger spacers, which simplify the manufacturing process, may also be employed.

An operation of various pertinent elements of the embodiment will now be described.

Beneficially, the first metal layer 220 is a mirror (pixel) metal layer, such that it blocks light which directly impinges on it from reaching the substrate 210. However, openings 220c are produced in the peripheral portion 220b of the first metal layer 220 in the peripheral region 200b so that the spacers 234 in the peripheral region 200b may be of a uniform height with the spacers 234 in the pixel region 200a. Accordingly, it is necessary to prevent light which impinges on the openings 220c from reaching the substrate 210.

For this purpose, it is possible to use the second metal layer 224 as a substantially continuous dedicated light shielding area covering the entire peripheral region 220b. In that case, any light which would pass through the openings 220c in the first metal layer 220 would be blocked by the second metal layer 224 from reaching the substrate 210 in the peripheral region 200b.

However, the area required for the driver circuits 205 can be reduced if the metal layer 224 could also be used for routing driver circuitry signals in the peripheral region 200b, instead of being dedicated only to light blocking.

Accordingly, in the preferred embodiment, the second metal layer 224 includes the light shields 224c in the peripheral region 200b arranged beneath each of the openings 220c. Preferably, each light shield 224c is an island, substantially disconnected from a remainder of the second metal layer 224. Additionally, on each of the light shields 224c is provided the light blocking partition or wall 226 extending substantially between the light shield 224c and the peripheral portion 220b of the first metal layer 220. Preferably, the wall 226 is continuously formed around the

entire opening 220c. Also, preferably, the wall 226 extends vertically to connect the light shield 224c to the peripheral portion 220b of the first metal layer 220.

FIG. 3 shows a top plan view of a portion of the peripheral region 200b of the LCD device 200 in the vicinity of one of the openings 220c in the first metal layer 220. As shown in FIG. 3, in one embodiment the opening 220c in the peripheral portion 220b of the first metal layer 220 is in the shape of a cross, and the spacer 234 is located in the middle of the intersection of the cross. In one embodiment, the end-to-end length of the “cross” in each of the “x” and “y” directions is 1.2 μm. This mimics the area between pixel electrodes 220a where the spacers 234 are located in the pixel region 200a, producing better display uniformity.

Meanwhile, the light shield 224c is an island that may be of any convenient size or shape, so long as it is at least as large as the opening 220c. In one embodiment, the length of the light shield in each of the “x” and “y” directions is 3.5 μm. The wall 226 may also be of any convenient size or shape, so long as it substantially encloses the opening 220c, and is no larger than the light shield 224c.

Preferably, the wall 226 is formed by patterning a vertically-extending via in the insulating layer 212 and depositing a light-blocking material therein prior to depositing the first metal layer 220. The wall 226 may be formed in a same step as the formation of the metal plugs 232 connected to the pixel electrodes 220a. Also, preferably, the wall 226 is formed of Tungsten. In this case, the wall 226 is formed of the same material as the vias 232 in the insulating layer 212, thus requiring no additional processing steps. However, other light blocking materials and methods of fabrication may be used. In one embodiment, the wall 226 has a height of approximately 1 μm so as to extend vertically between and connect the first metal layer 220 and the second metal layer 224. In that case, the thickness of the wall 226 may be approximately 0.4 μm.

While the present invention has been particularly shown and described with reference to the preferred embodiments thereof, it will be understood by those skilled in the art that various changes in detail may be made without departing from the scope of the invention as defined by the claims.

What is claimed is:

1. A liquid crystal display (LCD) device having a pixel region and a peripheral region adjacent to the pixel region, comprising:

- a silicon substrate;
- an insulating layer on the substrate;
- a first metal layer above the insulating layer, comprising array of pixel electrodes in the pixel region, and a peripheral portion in the peripheral region having a plurality of openings therein exposing portions of the insulating layer;
- a plurality of spacers on the exposed portions of the insulating layer in the peripheral region;
- a second metal layer between the first metal layer and the substrate, comprising
 - a plurality of light shields beneath the openings in the peripheral portion of the first metal layer, and
 - a plurality of signal routing lines in the peripheral region; and
- a plurality of walls, each corresponding to a corresponding one of the plurality of openings and extending substantially between the second metal layer and the first metal layer.

2. The LCD device of claim 1, wherein each wall is substantially continuous around the corresponding opening.

5

- 3. The LCD device of claim 1, wherein the wall comprises an opaque material.
- 4. The LCD device of claim 1, wherein each of the plurality of light shields is an island.
- 5. The LCD device of claim 1, wherein each of the plurality of walls is on a corresponding one of the light shields.
- 6. The LCD device of claim 1, further comprising third and fourth metal layers between the second metal layer and the substrate, the third and fourth metal layers each including a plurality of additional signal routing lines in the peripheral region.
- 7. The LCD device of claim 1, further comprising a plurality of spacers on the insulating layer between the pixel electrodes in the pixel region.
- 8. The LCD device of claim 1, further comprising at least one spacer between the pixel electrodes in the pixel region having a same height as at least one of the plurality of spacers in the peripheral region.
- 9. A liquid crystal display (LCD) device having a pixel region and a peripheral region adjacent to the pixel region, comprising:
 - a substrate;
 - an insulating layer on the substrate;
 - a first metal layer above the insulating layer, comprising an array of pixel electrodes in the pixel region, and a peripheral portion in the peripheral region having an opening therein;
 - a spacer in the opening in the first metal layer in the peripheral region;
 - a second metal layer between the first metal layer and the substrate; and
 - a wall beneath the opening in the first metal layer in the peripheral region and extending substantially between the second metal layer and the first metal layer.
- 10. The LCD device of claim 9, wherein the wall is substantially continuous around the opening.
- 11. The LCD device of claim 9, wherein the second metal layer comprises a light shield beneath the opening in the peripheral portion of the first metal layer, and wherein the wall extends substantially between the light shield and the first metal layer.
- 12. The LCD device of claim 9, further comprising at least one spacer in the pixel region having a same height as the spacer in the peripheral region.
- 13. The LCD device of claim 9, wherein the opening exposes a portion of the insulating layer and wherein the spacer is on the exposed portion of the insulating layer.

6

- 14. A liquid crystal display (LCD) device having a pixel region and a peripheral region adjacent to the pixel region, comprising:
 - a substrate;
 - an insulating layer on the substrate;
 - a first metal layer above the substrate, comprising an array of pixel electrodes in the pixel region, and a peripheral portion in the peripheral region having an opening therein;
 - a spacer in the opening in the first metal layer in the peripheral region;
 - a second metal layer between the first metal layer and the substrate, comprising a light shield beneath the opening in the peripheral portion of the first metal layer, and a plurality of signal routing lines in the peripheral region; and
 - third and fourth metal layers between the second metal layer and the substrate, the third and fourth metal layers each including a plurality of additional signal routing lines in the peripheral region.
- 15. The LCD device of claim 14, wherein the third and fourth metal layers form mutually-orthogonal row and column lines for the LCD device.
- 16. The LCD device of claim 14, wherein the light shield is an island.
- 17. The LCD device of claim 14, further comprising at least one spacer in the pixel region having a same height as the spacer in the peripheral region.
- 18. A liquid crystal display (LCD) device having a pixel region and a peripheral region adjacent to the pixel region, comprising:
 - a substrate;
 - an insulating layer on the substrate;
 - a first metal layer above the insulating layer, comprising an array of pixel electrodes in the pixel region and a first plurality of recesses therebetween, and a peripheral portion in the peripheral region having a second plurality of recesses therein; and
 - a plurality of spacers in the first plurality of recesses and the second plurality of recesses, at least one of the spacers in the first plurality of recesses and at least one of the spacers in the second plurality of recesses having a same height.

* * * * *

专利名称(译)	具有均匀集成间隔物的液晶显示装置		
公开(公告)号	US6642986	公开(公告)日	2003-11-04
申请号	US09/833718	申请日	2001-04-13
[标]申请(专利权)人(译)	梅尔尼克乔治 ALBU卢西恩 - [R JANSSEN PETER J 豪塞尔STEFAN 斯宾格勒JOERG KRAFT KARL HEINZ		
申请(专利权)人(译)	梅尔尼克乔治A. ALBU卢西恩R. JANSSEN PETER J. 豪塞尔STEFAN 斯宾格勒JOERG KRAFT卡尔 - 海因茨·		
当前申请(专利权)人(译)	皇家飞利浦电子N.V.		
[标]发明人	MELNIK GEORGE A ALBU LUCIAN R JANSSEN PETER J HAUSSER STEFAN SPENGLER JOERG KRAFT KARL HEINZ		
发明人	MELNIK, GEORGE A. ALBU, LUCIAN R. JANSSEN, PETER J. HAUSSER, STEFAN SPENGLER, JOERG KRAFT, KARL-HEINZ		
IPC分类号	G02F1/1335 G02F1/13 G02F1/1339 G02F1/1362 G02F1/1343 G02F1/133 G02F1/1345		
CPC分类号	G02F1/133509 G02F1/13454 G02F1/13394 G02F2203/02		
其他公开文献	US20020149734A1		
外部链接	Espacenet USPTO		

摘要(译)

一种反射型液晶显示 (LCD) 装置，包括：多个开口，在所述装置的外围区域中的像素金属层中形成图案，在下方暴露所述绝缘层，在所述像素金属层中的开口下方具有多个遮光岛，以及多个壁形成在围绕开口的岛上并且基本上在岛和像素金属层之间延伸。多个隔离物设置在周边区域中的绝缘层的暴露部分上，用于支撑上方的透明（例如，玻璃）层并为液晶材料提供空间。该结构通过使形成在外围区域中的间隔物更紧密地匹配在器件的像素区域中形成的间隔物来增强显示均匀性。该结构还防止光到达器件外围区域中的衬底，并允许在器件的外围区域中形成的第二金属层的部分用于信号路由。

