



(19) **United States**

(12) **Patent Application Publication**
LEE et al.

(10) **Pub. No.: US 2009/0040412 A1**
(43) **Pub. Date: Feb. 12, 2009**

(54) **LIQUID CRYSTAL DISPLAY AND DRIVING METHOD THEREOF**

(30) **Foreign Application Priority Data**

Aug. 7, 2007 (KR) 10-2007-0078924

(75) Inventors: **Jun-Woo LEE**, Anyang-si (KR);
Hee-Seop KIM, Hwaseong-si (KR);
Mee-Hye JUNG, Suwon-si (KR);
Seung-Hoon LEE, Yongin-si (KR);
Jiengang LU, Suwon-si (KR)

Publication Classification

(51) **Int. Cl.**
G02F 1/133 (2006.01)
G02F 1/1368 (2006.01)
(52) **U.S. Cl.** **349/48**

Correspondence Address:
H.C. PARK & ASSOCIATES, PLC
8500 LEESBURG PIKE, SUITE 7500
VIENNA, VA 22182 (US)

(57) **ABSTRACT**

A liquid crystal display includes first and second thin film transistors, a pixel electrode including a first cutout and an inclination direction determining member and connected to the first thin film transistor, a direction controlling electrode connected to the second thin film transistor, a first storage electrode overlapping with the pixel electrode and the direction controlling electrode and applied with a first storage electrode signal having a first voltage, and second storage electrode overlapping with the direction controlling electrode to receive a second storage electrode signal having a second voltage that periodically changes.

(73) Assignee: **SAMSUNG ELECTRONICS CO., LTD.**, Suwon-si (KR)

(21) Appl. No.: **12/061,193**

(22) Filed: **Apr. 2, 2008**

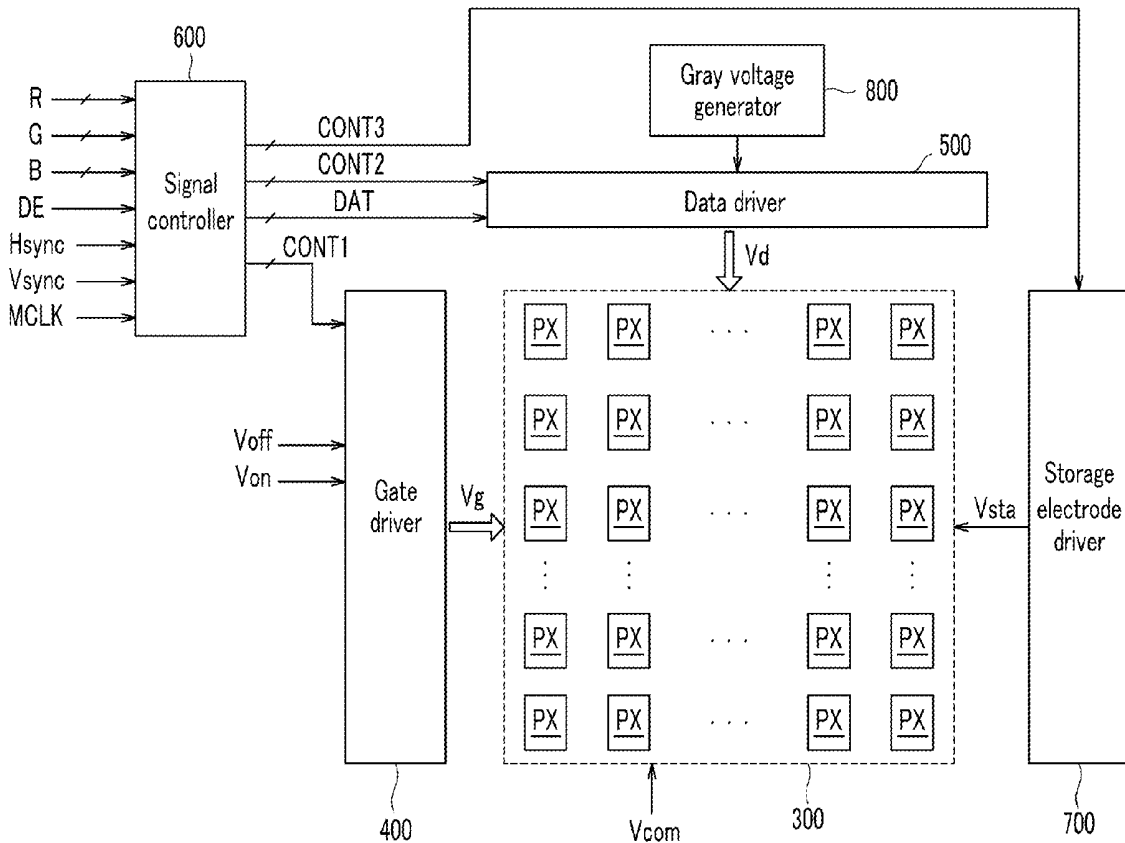


FIG. 1

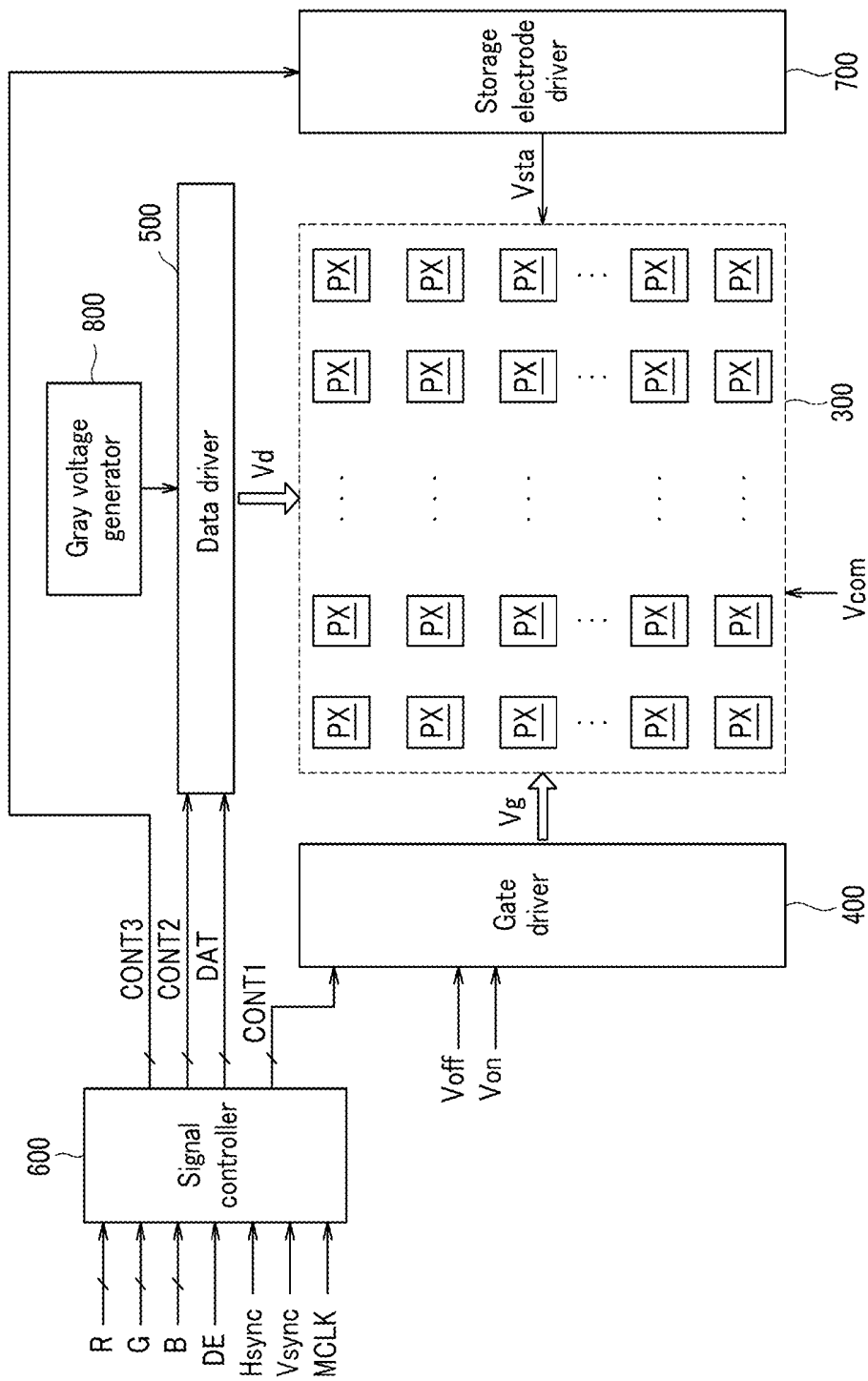


FIG.2

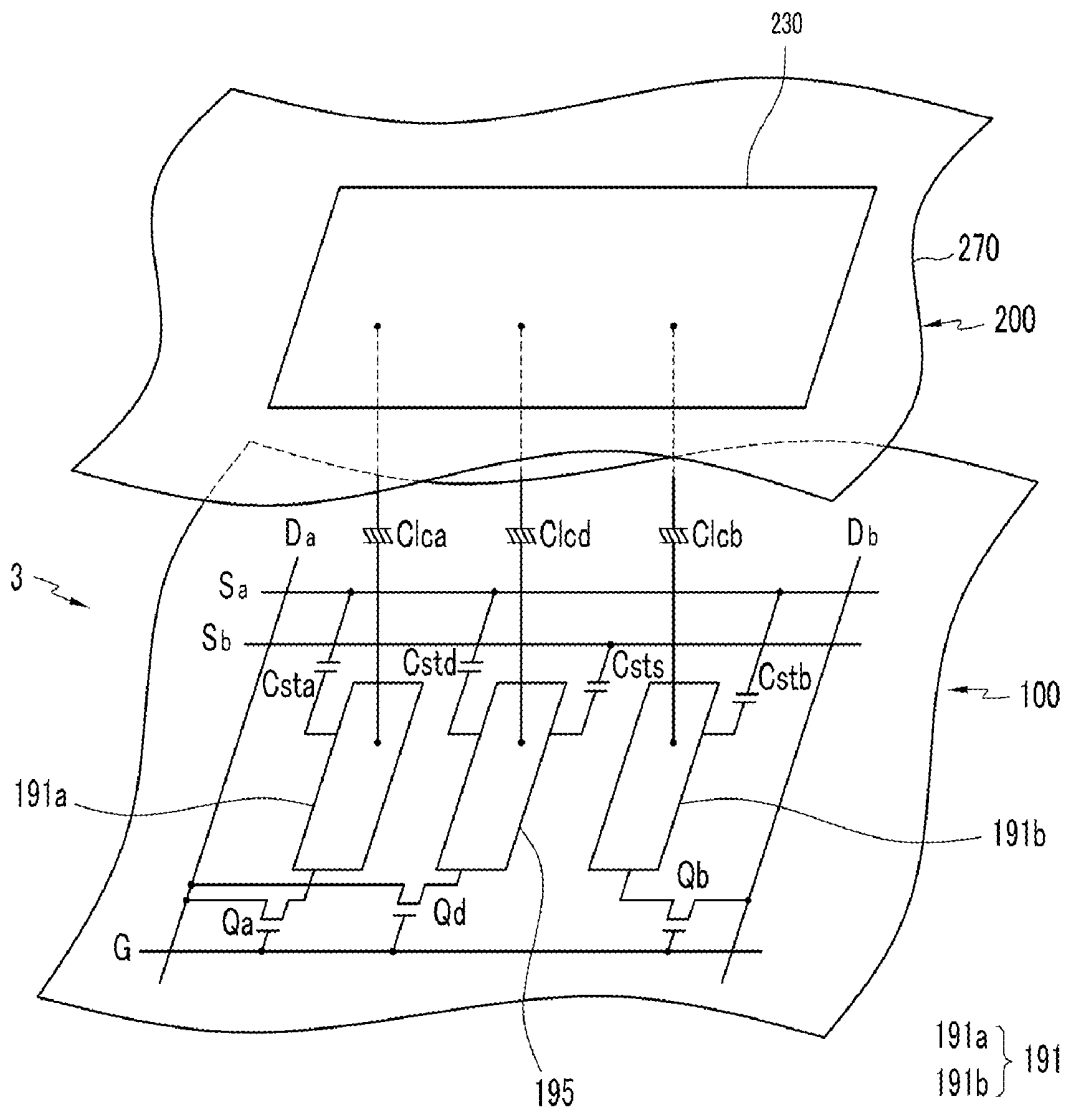


FIG. 3

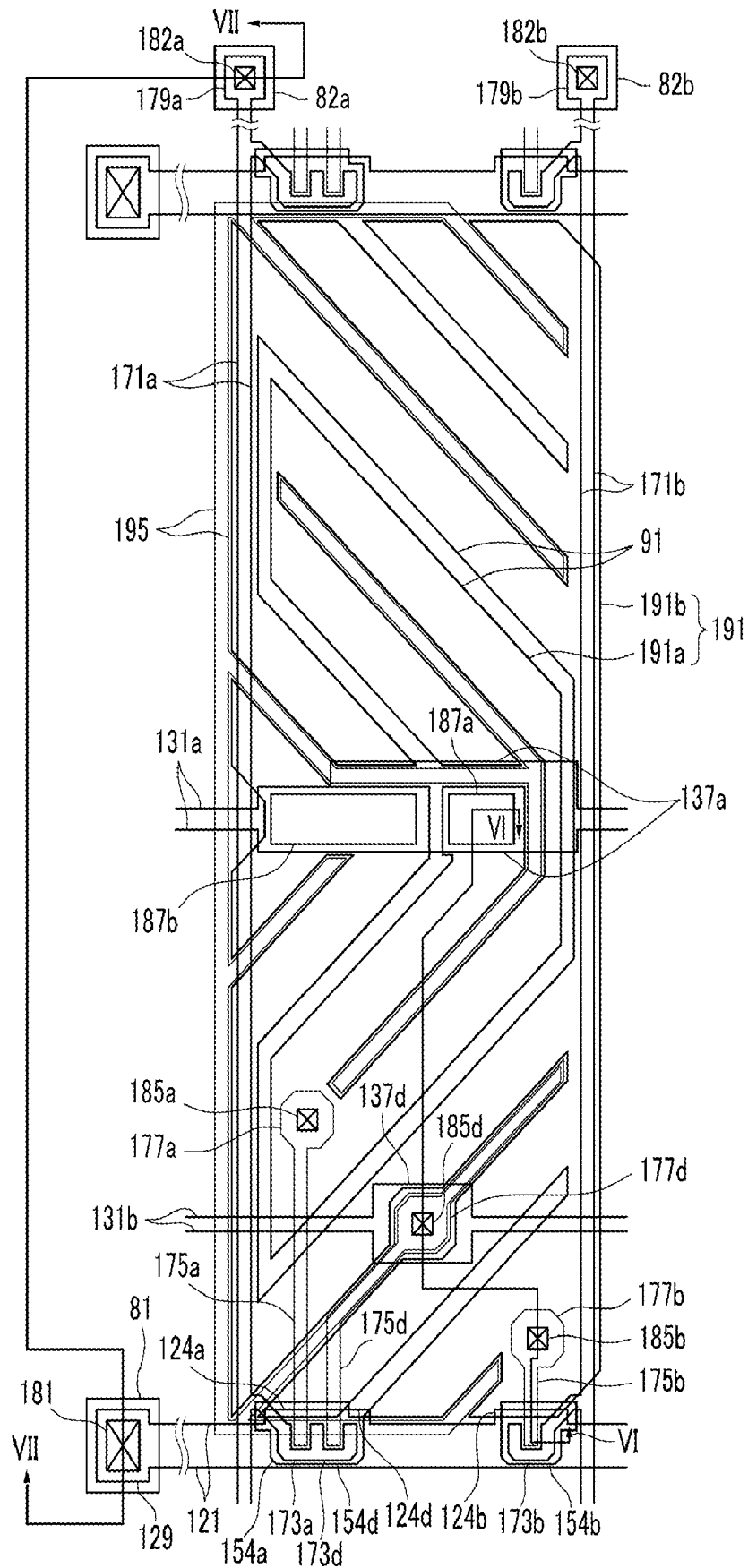


FIG.4

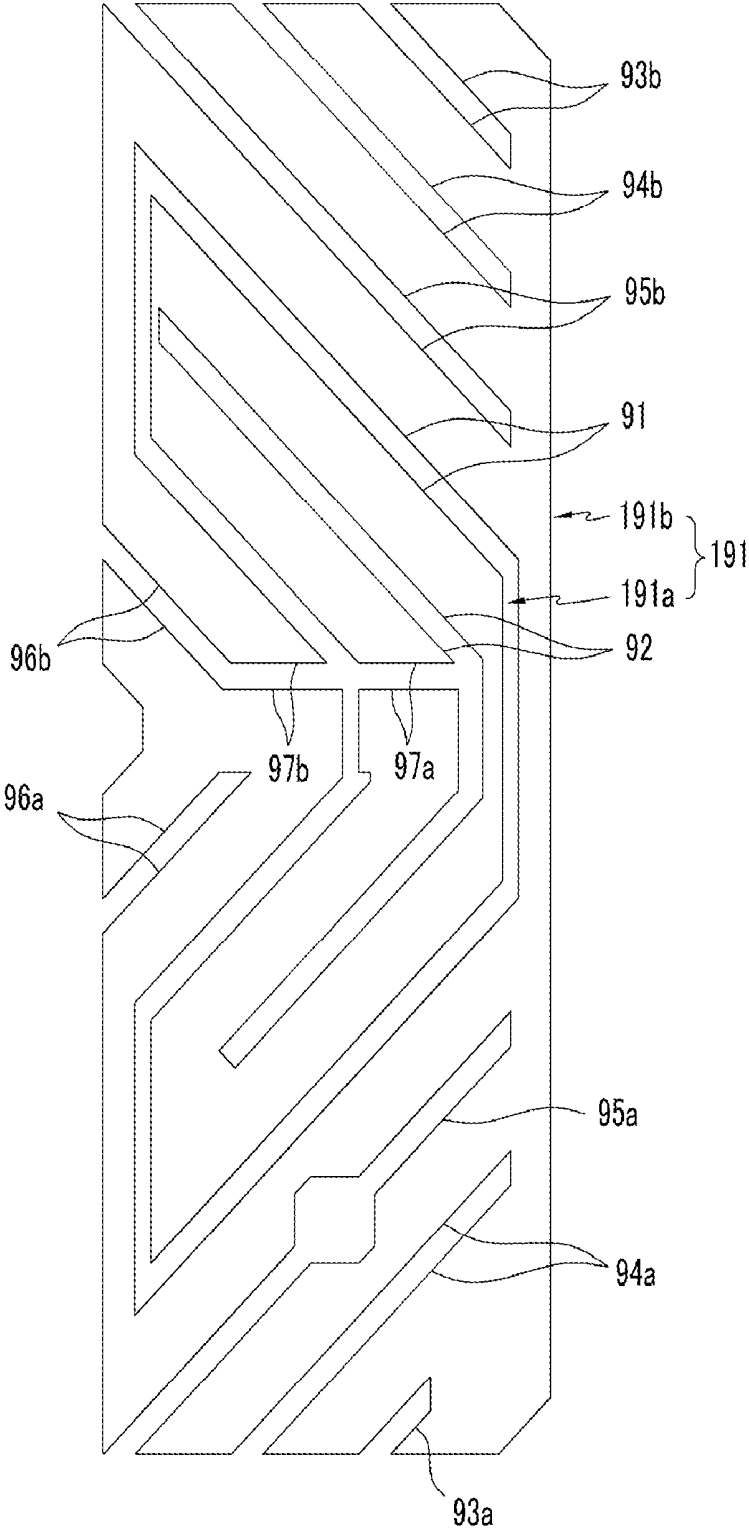


FIG.5

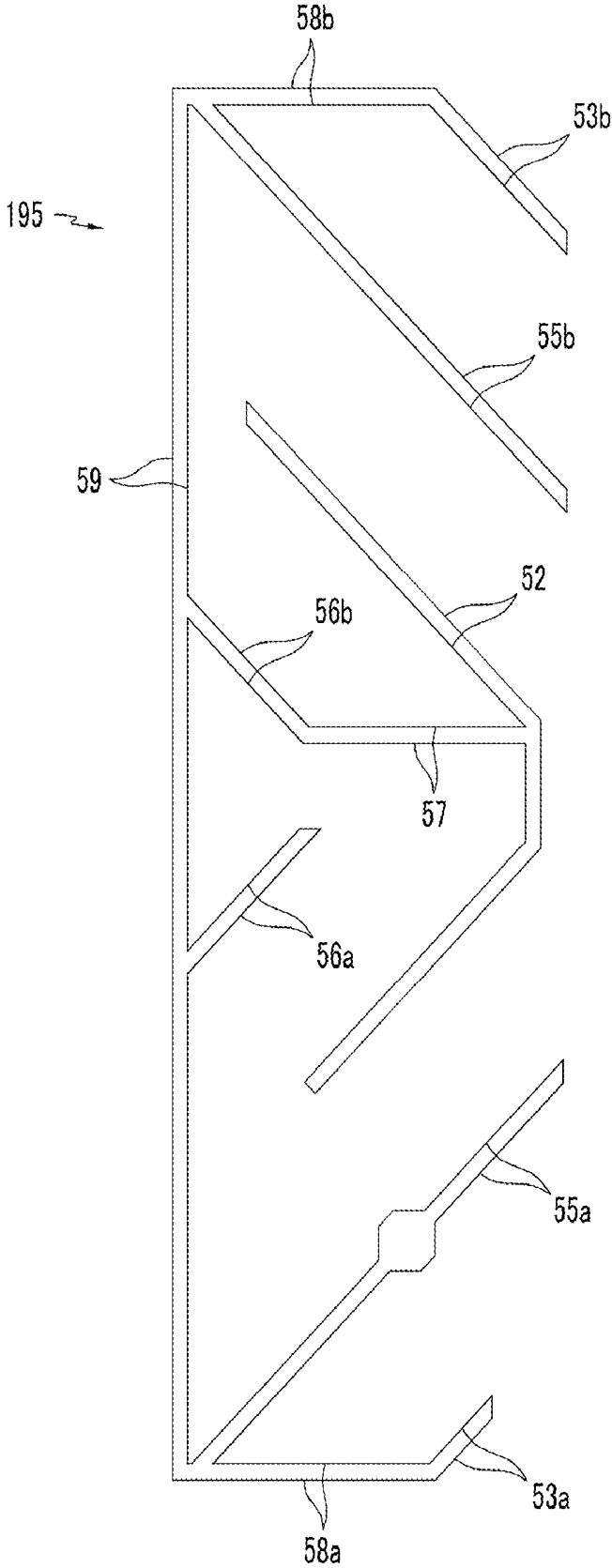


FIG.6

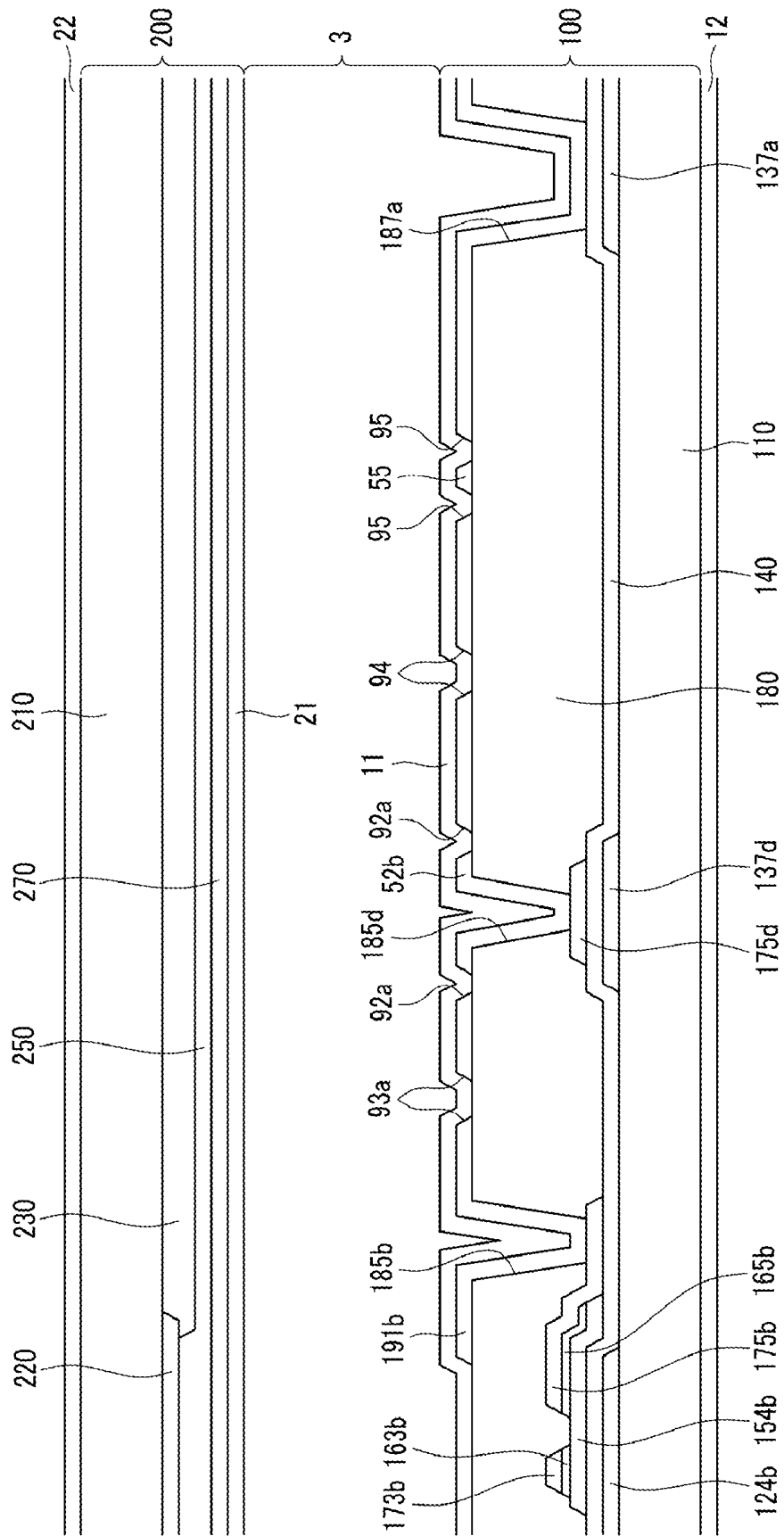


FIG. 7

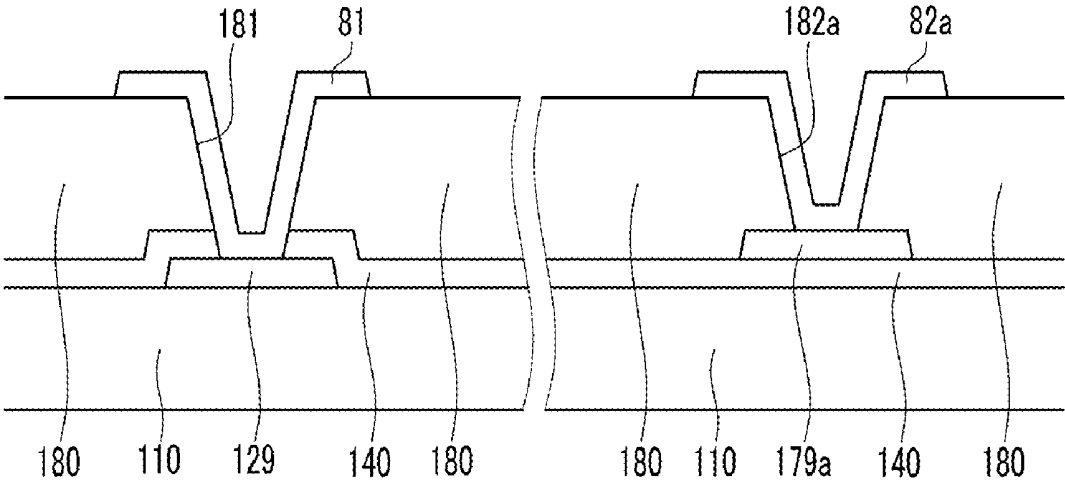


FIG.8

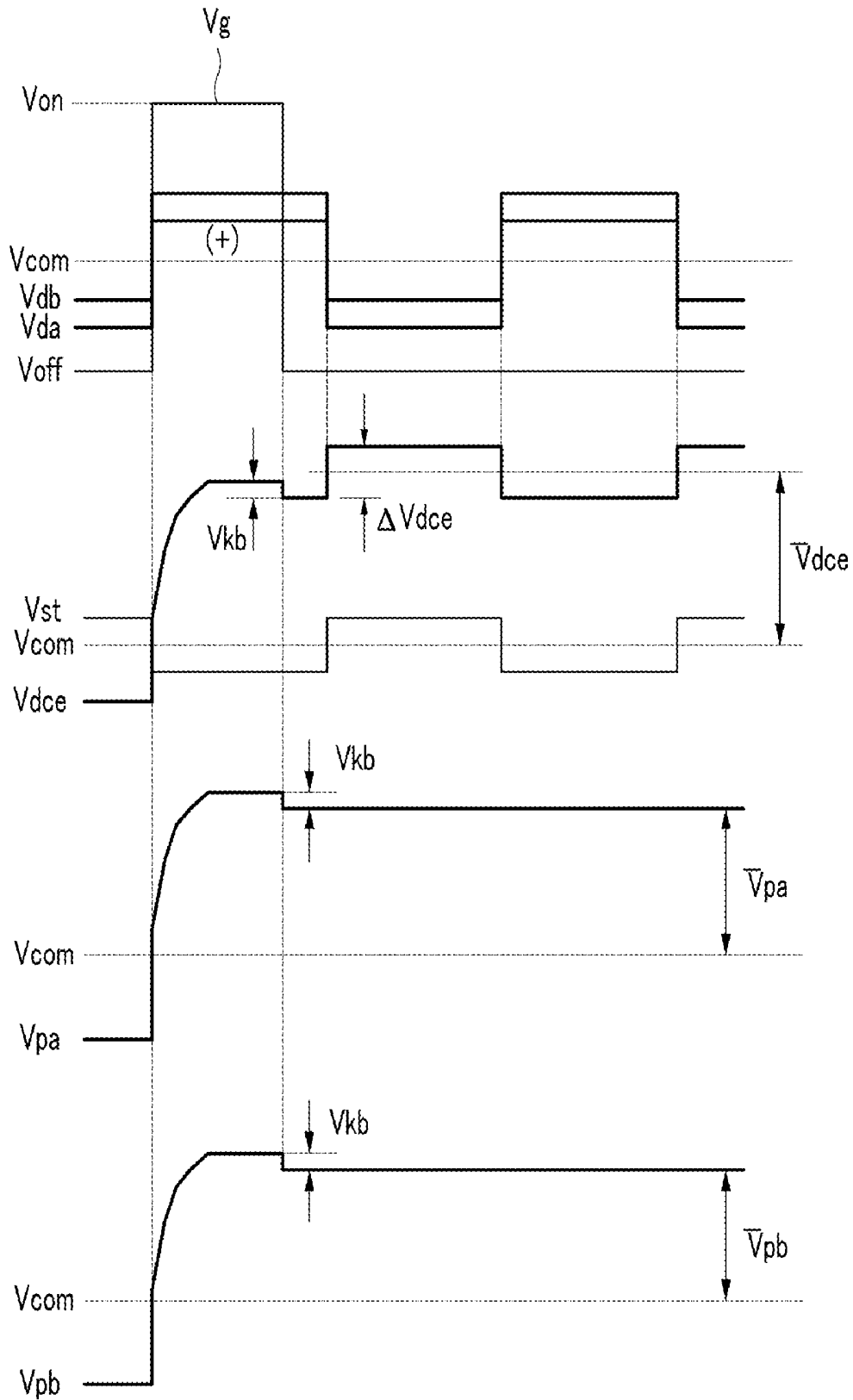
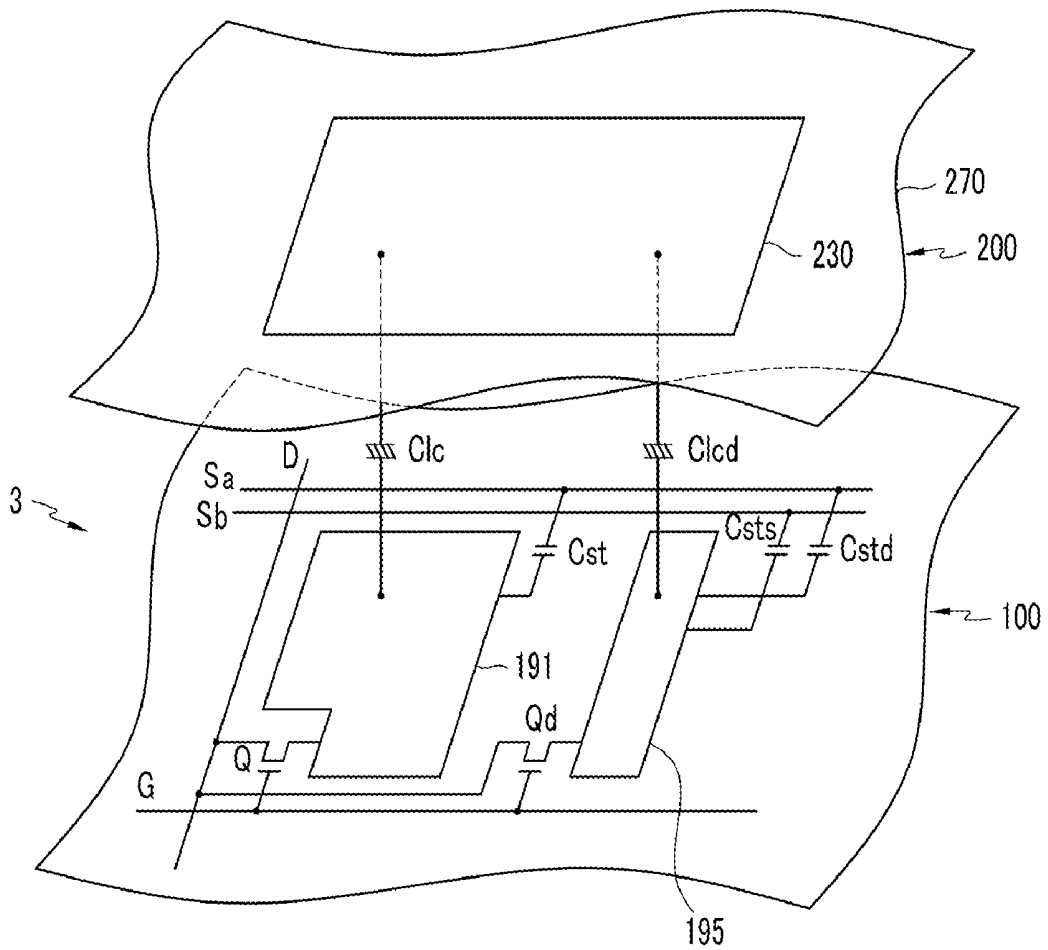


FIG. 9



LIQUID CRYSTAL DISPLAY AND DRIVING METHOD THEREOF

CROSS-REFERENCE TO RELATED APPLICATION

[0001] This application claims priority from and the benefit of Korean Patent Application No. 10-2007-0078924, filed on Aug. 7, 2007, which is hereby incorporated by reference for all purposes as if fully set forth herein.

BACKGROUND OF THE INVENTION

[0002] 1. Field of the Invention

[0003] The present invention relates to a liquid crystal display (LCD) and a method for driving the LCD. More specifically, the present invention relates to a vertical alignment (VA) mode LCD that may obtain a wide viewing angle without the formation of a cutout or a protrusion in the common electrode.

[0004] 2. Discussion of the Background

[0005] Liquid crystal displays (LCDs) are one of the most widely used flat panel displays. An LCD includes a pair of panels provided with field-generating electrodes, such as pixel electrodes and a common electrode, and a liquid crystal (LC) layer interposed between the two panels. The LCD displays images by applying voltages to the field-generating electrodes to generate an electric field in the LC layer that determines the orientations of LC molecules therein to adjust polarization of incident light.

[0006] Among LCDs, a vertical alignment (VA) mode LCD, which aligns LC molecules such that the long axes of the LC molecules are perpendicular to the panels in the absence of an electric field, is spotlighted because of its high contrast ratio and wide reference viewing angle. A wide reference viewing angle is defined as a viewing angle that makes the contrast ratio equal to 1:10 or as a limit angle for the inversion in luminance between the grays.

[0007] The wide viewing angle of the VA mode LCD can be realized by cutouts in the field-generating electrodes and protrusions on the field-generating electrodes. Since the cutouts and the protrusions can determine the tilt directions of the LC molecules, the tilt directions can be distributed in several directions using the cutouts and the protrusions such that the reference viewing angle is widened.

[0008] However, in order to form the cutouts in the pixel electrode and the common electrode, an additional mask to pattern the common electrode is needed, and an overcoat to prevent the pigments of the color filter from contaminating the liquid crystal layer through the cutout of the common electrode should be included on the color filter. Furthermore, in order to form the protrusions, an additional process is needed or the existent process should be changed, and thus the manufacturing method of the liquid crystal display becomes complicated. In addition, the LC molecules disposed close to the protrusions or the cutouts are controlled in a VA mode LCD, but because the influence of the protrusions or the cutouts is weaker on the LC molecules disposed away from the protrusions or the cutouts, the response speed of the display device may decrease.

SUMMARY OF THE INVENTION

[0009] The present invention provides a VA mode LCD that may obtain a wide viewing angle without formation of a cutout or a protrusion in the common electrode.

[0010] Additional features of the invention will be set forth in the description which follows, and in part will be apparent from the description, or may be learned by practice of the invention.

[0011] The present invention discloses an LCD including first and second thin film transistors, a pixel electrode including a first cutout and an inclination direction determining member and connected to the first thin film transistor, a direction controlling electrode connected to the second thin film transistor, a first storage electrode overlapping with the pixel electrode and the direction controlling electrode and applied with a first storage electrode signal having a first voltage, and a plurality of second storage electrodes overlapping with the direction controlling electrode. The second storage electrodes are applied with a second storage electrode signal having a periodically changing second voltage.

[0012] The present invention also discloses a method for driving an LCD including a first liquid crystal capacitor and a second liquid crystal capacitor. The method includes charging the first and second liquid crystal capacitors, maintaining the charged voltage of the first liquid crystal capacitor, and periodically changing the charged voltage of the second liquid crystal capacitor while the maintaining the charged voltage of the first liquid crystal capacitor such that a voltage between two terminals of the second liquid crystal capacitor is greater than a voltage between two terminals of the first liquid crystal capacitor.

[0013] It is to be understood that both the foregoing general description and the following detailed description are exemplary and explanatory and are intended to provide further explanation of the invention as claimed.

BRIEF DESCRIPTION OF THE DRAWINGS

[0014] The accompanying drawings, which are included to provide a further understanding of the invention and are incorporated in and constitute a part of this specification, illustrate embodiments of the invention, and together with the description serve to explain the principles of the invention.

[0015] FIG. 1 is a block diagram of an LCD according to an exemplary embodiment of the present invention.

[0016] FIG. 2 is an equivalent circuit diagram of a pixel of an LCD according to an exemplary embodiment of the present invention.

[0017] FIG. 3 is a layout view of an LCD according to an exemplary embodiment of the present invention.

[0018] FIG. 4 is a layout view of a pixel electrode in an LCD according to an exemplary embodiment of the present invention.

[0019] FIG. 5 is a layout view of a direction controlling electrode in an LCD according to an exemplary embodiment of the present invention.

[0020] FIG. 6 and FIG. 7 are cross-sectional views of the LCD shown in FIG. 3 taken along lines VI-VI and VII-VII, respectively.

[0021] FIG. 8 is a waveform diagram of a driving signal of an LCD according to an exemplary embodiment of the present invention.

[0022] FIG. 9 is an equivalent circuit diagram of a pixel of an LCD according to another exemplary embodiment of the present invention.

DETAILED DESCRIPTION OF THE ILLUSTRATED EMBODIMENTS

[0023] The present invention is described more fully hereinafter with reference to the accompanying drawings, in which exemplary embodiments of the invention are shown.

This invention may, however, be embodied in many different forms and should not be construed as limited to the embodiments set forth herein. Rather, these embodiments are provided so that this disclosure is thorough, and will fully convey the scope of the invention to those skilled in the art. In the drawings, the size and relative sizes of layers and regions may be exaggerated for clarity. Like reference numerals in the drawings denote like elements.

[0024] It will be understood that when an element or layer is referred to as being “on” or “connected to” another element or layer, it can be directly on or directly connected to the other element or layer, intervening elements or layers may be present. In contrast, when an element is referred to as being “directly on” or “directly connected to” another element or layer, there are no intervening elements or layers present.

[0025] Referring to FIG. 1 an LCD according to an exemplary embodiment of the present invention includes a liquid crystal panel assembly **300**, a gate driver **400**, a data driver **500**, a storage electrode driver **700**, a gray voltage generator **800**, and a signal controller **600**.

[0026] The LC panel assembly **300** includes a plurality of signal lines (not shown), and a plurality of pixels PX connected to the signal lines and arranged substantially in a matrix, as seen in the equivalent circuit diagram. The LC panel assembly **300** further includes lower and upper panels **100** and **200** that face each other and an LC layer **3** interposed therebetween, as shown in the structural view of FIG. 2.

[0027] Referring to FIG. 2, the signal lines G, Da, Db, Sa, and Sb include a plurality of gate lines G to transmit gate signals (also referred to as scanning signals), a plurality of pairs of first and second data lines Da and Db to transmit data voltages, and a plurality of pairs of first and second storage electrode lines Sa and Sb to transmit storage electrode signals. The gate lines G extend in a row direction and are parallel to each other, and the data lines Da and Db extend in a column direction and are parallel to each other.

[0028] Each pixel PX, for example the pixel PX connected to the gate line G and the data lines Da and Db, includes first, second, and third switching elements Qa, Qb, and Qd, first, second, and third LC capacitors Clca, Clcb, and Clcd, first, second, and third storage capacitors Csta, Cstb, and Cstd, and a direction controlling capacitor Csts.

[0029] The first, second, and third switching elements Qa, Qb, and Qd may be three-terminal elements, such as thin film transistors, and are provided on the lower panel **100**.

[0030] The control terminal of the first switching element Qa is connected to the gate line G, the input terminal thereof is connected to the first data line Da, and the output terminal thereof is connected to the first LC capacitor Clca and the first storage capacitor Csta. The control terminal of the second switching element Qb is connected to the gate line G, the input terminal thereof is connected to the second data line Db, and the output terminal thereof is connected to the second LC capacitor Clcb and the second storage capacitor Cstb. The control terminal of the third switching element Qd is connected to the gate line G, the input terminal thereof is connected to the first data line Da, and the output terminal thereof is connected to the third LC capacitor Clcd, the third storage capacitor Cstd, and the direction controlling capacitor Csts.

[0031] The first and second LC capacitors Clca and Clcb each include a subpixel electrode **191a** and **191b** provided on the lower panel **100** and a common electrode **270** provided on the upper panel **200** as two terminals, and the third LC capacitor Clcd includes a direction controlling electrode **195** provided on the lower panel **100** and the common electrode **270** provided on the upper panel **200** as two terminals. The LC

layer **3** disposed between the sub-pixel electrodes **191a** and **191b** and the common electrode **270** functions as a dielectric.

[0032] The subpixel electrode **191a** and **191b** are spaced apart from each, and together make up one pixel electrode **191**. The direction controlling electrode **195** is spaced apart from the subpixel electrodes **191a** and **191b**. The common electrode **270** is disposed on the entire surface of the upper panel **200** and is supplied with a common voltage Vcom.

[0033] LC molecules of the LC layer **3** may have negative dielectric anisotropy and may be aligned such that their major axes are perpendicular to the two panels in the absence of an electric field.

[0034] The first, second, and third storage capacitors Csta, Cstb, and Cstd respectively function as auxiliary capacitors for the first, second, and third LC capacitors Clca, Clcb, and Clcd. The first, second, and third storage capacitors Csta, Cstb, and Cstd are formed by overlapping the first storage electrode line Sa provided on the lower panel **100** with the first subpixel electrode **191a**, the second subpixel electrode **191b**, and the direction controlling electrode **195**, respectively, via an insulator disposed therebetween. The first storage electrode line Sa is supplied with a voltage, such as the common voltage Vcom. Alternatively, the first, second, and third storage capacitors Csta, Cstb, and Cstd may be formed by overlapping the pixel electrode **191** or the direction controlling electrode **195** with the previous gate line immediately above it via an insulator.

[0035] The direction controlling capacitor Csts is formed by overlapping the second storage electrode line Sb provided on the lower panel **100** with the direction controlling electrode **195** via the insulator. The second storage electrode line Sb is supplied with a storage electrode signal Vs periodically changes.

[0036] In order to implement color display, each pixel PX may uniquely display one primary color (spatial division) or each pixel PX may sequentially display the primary colors in turn (temporal division) such that the spatial or temporal sum of the primary colors is recognized as a desired color. An example of a set of primary colors includes red, green, and blue. FIG. 2 shows an example of spatial division in which each pixel PX includes a color filter **230** representing one of the primary colors in an area of the upper panel **200** facing the pixel electrode **191**. Unlike in FIG. 2, the color filter **230** may be provided on top of or under the pixel electrode **191** provided on the lower panel **100**.

[0037] Polarizers (not shown) may be provided in the LC panel assembly **300**.

[0038] Now, the LC panel assembly **300** will be described in detail with reference to FIG. 3, FIG. 4, FIG. 5, FIG. 6, and FIG. 7.

[0039] Referring to FIG. 3, FIG. 4, FIG. 5, FIG. 6, and FIG. 7, an LC panel assembly according to an exemplary embodiment of the present invention includes a lower panel **100**, an upper panel **200**, an LC layer **3**, and polarizers **12** and **22**.

[0040] First, the lower panel **100** will be described in detail.

[0041] A plurality of gate lines **121** and a plurality of pairs of first and second storage electrode lines **131a** and **131b** are disposed on an insulating substrate **110**, which may be made of transparent glass or plastic.

[0042] The gate lines **121**, which are spaced apart from each other, extend in a transverse direction. Each gate line **121** includes a plurality of first, second, and third gate electrodes **124a**, **124b**, and **124d**, and an end portion **129** having a large area for connection with another layer or the gate driver **400**. The first and third gate electrodes **124a** and **124d** are connected to each other.

[0043] The first and second storage electrode lines **131a** and **131b** extend parallel to the gate lines **121**, and include first and second storage electrodes **137a** and **137d**, respectively, extending upward and downward. However, the shapes and the arrangements of the first and second storage electrode lines **131a** and **131b** may be modified as needed.

[0044] A gate insulating layer **140**, which may be made of silicon nitride SiN_x or silicon oxide SiO_x , is disposed on the gate lines **121** and the storage electrode lines **131a** and **131b**.

[0045] A plurality of first, second, and third semiconductor islands **154a**, **154b**, and **154d**, which may be made of hydrogenated amorphous silicon (a-Si) or polysilicon, are disposed on the gate insulating layer **140**. The first and third semiconductor islands **154a** and **154d** are connected to each other.

[0046] First ohmic contact islands (not shown), second ohmic contact islands **163b** and **165b**, and third ohmic contact islands (not shown) are respectively disposed on the first, second, and third semiconductor islands **154a**, **154b**, and **154d**. The ohmic contacts **163b** and **165b** may be made of material such as n+ hydrogenated amorphous silicon with an n-type impurity, such as phosphor doped at high concentration, or of silicide.

[0047] A plurality of pairs of first and second data lines **171a** and **171b** and a plurality of first, second, and third drain electrodes **175a**, **175b**, and **175d** are disposed on the ohmic contacts **163b** and **165b** and the gate insulating layer **140**.

[0048] The first and second data lines **171a** and **171b** extend in a vertical direction and cross the gate lines **121**. Each data line **171a** includes a plurality of first, second, and third source electrodes **173a** and **173d** extending toward the first and third gate electrodes **124a** and **124d**. Each data line **171b** includes a plurality of second source electrodes **173b** extending toward the second gate electrodes **124b**. The first and second data lines **171a** and **171b** respectively include end portions **179a** and **179b** having a large area for connection with another layer or the data driver **500**.

[0049] The first, second, and third drain electrodes **175a**, **175b**, and **175d** are spaced apart from each other, and are also spaced apart from the first and second data lines **171a** and **171b**.

[0050] The first and third source electrodes **173a** and **173d** are connected to each other.

[0051] The first source electrode **173a** and the first drain electrode **175a** are disposed on the first semiconductor island **154a**, and the first drain electrode **175a** includes an end portion **177a** having a large area and another end portion having a bar shape and that is partly enclosed by the first source electrode **173a**.

[0052] The second source electrode **173b** and the second drain electrode **175b** are disposed on the second semiconductor island **154b**, and the second drain electrode **175b** includes an end portion **177b** having a large area and another end portion having a bar shape and that is partly enclosed by the second source electrode **173b**.

[0053] The third source electrode **173d** and the third drain electrode **175d** are disposed on the third semiconductor island **154d**. The third drain electrode **175d** includes two line portions and an expanded area **177d** connected therebetween. One end portion of the line portions is enclosed by the third source electrode **173d**.

[0054] The first gate electrode **124a**, the first source electrode **173a**, and the first drain electrode **175a** along with the first semiconductor island **154a** make up the first thin film transistor Qa, which includes a channel in the first semiconductor island **154a** disposed between the first source electrode **173a** and the first drain electrode **175a**. Also, the second gate electrode **124b**, the second source electrode **173b**, and

the second drain electrode **175b** along with the second semiconductor island **154b** make up the second thin film transistor Qb, which includes a channel in the second semiconductor island **154b** disposed between the second source electrode **173b** and the second drain electrode **175b**. Further, the third gate electrode **124d**, the third source electrode **173d**, and the third drain electrode **175d** along with the third semiconductor island **154d** make up the third thin film transistor Qd, which includes a channel in the third semiconductor island **154d** disposed between the third source electrode **173d** and the third drain electrode **175d**.

[0055] The ohmic contacts **163b** and **165b** may be interposed only between the underlying semiconductors **154a**, and the overlying data lines **171a** and **171b** and the overlying drain electrodes **175a**, **175b**, and **175d** thereon, and may reduce contact resistance therebetween. The semiconductors **154a** and **154b** include a plurality of exposed portions, which are not covered with the data lines **171a** and **171b** and the drain electrodes **175a**, **175b**, and **175d**, including portions located between the source electrodes **173a**, **173b**, and **173d** and the drain electrodes **175a**, **175b**, and **175d**.

[0056] A passivation layer **180** is disposed on the first and second data lines **171a** and **171b**, the drain electrodes **175a**, **175b**, and **175d**, and the exposed semiconductors **154a** and **154b**. The passivation layer **180** may be made of an organic insulator and the surface thereof may be flat. The organic insulator may have photosensitivity, and its dielectric constant may be less than about 4.0. However, the passivation layer **180** may have a double-layered structure including a lower inorganic layer and an upper organic layer so that the exposed portions of the semiconductors **154a**, **154b**, and **154d** are protected and the most can be made of the excellent insulating characteristics of the organic layer.

[0057] The passivation layer **180** has a plurality of contact holes **182a** and **182b** exposing the end portions **179a** and **179b** of the data lines **171a** and **171b**, respectively. Also, the passivation layer **180** has a plurality of contact holes **185a**, **185b**, and **185d** exposing the first, second, and third drain electrodes **175a**, **175b**, and **175d**, respectively. Further, the passivation layer **180** and the gate insulating layer **140** have a plurality of contact holes **181** exposing the end portions **129** of the gate lines **121**. The passivation layer **180** also has first and second openings **187a** and **187b** that respectively overlap the first storage electrode **137a**.

[0058] A plurality of pixel electrodes **191** that each include first and second subpixel electrodes **191a** and **191b**, a direction controlling electrode **195**, and a plurality of contact assistants **81**, **82a**, and **82b**, are disposed on the passivation layer **180**. They may be made of a transparent conductor such as ITO or IZO, or a reflective conductor such as Al, Ag, Cr, and alloys thereof.

[0059] The first subpixel electrode **191a**, the second subpixel electrode **191b**, and the direction controlling electrode **195** may be connected to the first, second, and third drain electrodes **175a**, **175b**, and **175d** through the contact holes **185a**, **185b**, and **185d**, respectively, such that the first subpixel electrode **191a**, the second subpixel electrode **191b**, and the direction controlling electrode **195** receive the data voltages from the first, second, and third drain electrodes **175a**, **175b**, and **175d**, respectively.

[0060] The data voltage applied to the first subpixel electrode **191a** may differ from the data voltage applied to the second subpixel electrode **191b**. The data voltages are preset for an input image signal, and the size of the data voltages may be set depending on the size and shape of the sub-pixel electrodes **191a** and **191b**. The areas of the first and second subpixel electrodes **191a** and **191b** may be different from

each other. As an example, the first sub-pixel electrode **191a** is supplied with a higher voltage than the second sub-pixel electrode **191b**, and the area of the first subpixel electrode **191a** is smaller than that of the second subpixel electrode **191b**.

[0061] The subpixel electrodes **191a** and **191b** and the direction controlling electrode **195** respectively make up the first, second, and third LC capacitors **Clca**, **Clcb**, and **Clcd** with the common electrode **270** to store applied voltages even after the thin film transistors **Qa**, **Qb**, and **Qd** are turned off. The first subpixel electrode **191a**, the second subpixel electrode **192a**, and the direction controlling electrode **195** overlap the first storage electrode **137a** to form the first, second, and third storage capacitors **Csta**, **Cstb**, and **Cstd**, which are connected in parallel with the first, second, and third LC capacitors **Clca**, **Clcb**, and **Clcd** to enhance the voltage storing capacity thereof. Here, because the passivation layer **180** includes first and second openings **187a** and **187b**, only the gate insulating layer **140** is disposed between the pixel electrode **191** and the first storage electrode **137a** in the first and second openings **187a** and **187b**. Accordingly, the distance between the pixel electrode **191** and the first storage electrode **137a** is decreased such that the capacities of the storage capacitors **Csta** and **Cstb** may be increased, which may improve the voltage storing capacity.

[0062] The direction controlling capacitor **Csts** is formed by overlapping the direction controlling electrode **195** and the third drain electrode **175d**, which is connected to the direction controlling electrode **195** with the second storage electrode **137d**.

[0063] Referring to FIG. 4, each pixel electrode **191** has a substantially rectangular shape having two main sides parallel to the gate lines **121** and two main sides parallel to the data lines **171a** and **171b**, and a chamfered right corner. The chamfered oblique sides of the pixel electrodes **191** are inclined with respect to the gate line **121** by an angle of about 45°.

[0064] A pair of first and second subpixel electrodes **191a** and **191b** that make up one pixel electrode **191** are engaged with each other with a gap **91** therebetween, and the first subpixel electrode **191a** is arranged in the center of the second subpixel electrode **191b**. The gap **91** includes upper and lower gaps, and the upper and lower gaps substantially slant and extend from the left side of the pixel electrode **191** toward the right side of the pixel electrode **191**. The lower and upper gaps are inclined with respect to the gate line **121** by an angle of about 45°, and extend perpendicularly to each other.

[0065] The first subpixel electrode **191a** includes a central cutout **92** and a transverse cutout **97a**, and the first subpixel electrode **191a** is partitioned into a plurality of regions by the central cutout **92**. The central cutout **92** includes a vertical portion and a pair of oblique portions connected to the vertical portion. The vertical portion extends vertically with respect to the first storage electrode line **137a**, and the pair of oblique portions extends from the vertical portion and are parallel to the right side of the pixel electrode **191**. The pair of oblique portions are inclined with respect to the gate line **121** at an angle of about 45° and extend perpendicular to each other. The transverse portion cutout **97a** is connected to the central cutout **92**.

[0066] The second subpixel electrode **191b** includes upper cutouts **93b**, **94b**, **95b**, and **96b**, lower cutouts **93a**, **94a**, **95a**, and **96a**, and a transverse cutout **97b**, and the second subpixel electrode **191b** is partitioned into a plurality of regions by the upper and lower cutouts **93a**, **93b**, **94a**, **94b**, **95a**, **95b**, **96a**, and **96b**. The lower cutouts **93a**, **94a**, **95a**, and **96a** and the upper cutouts **93b**, **94b**, **95b**, and **96b** are symmetrical with respect to the first storage electrode line **131a**. The upper and

lower cutouts **93a**, **93b**, **94a**, **94b**, **95a**, **95b**, **96a**, and **96b** are connected to the upper side, the lower side, or the left side of the pixel electrode **191**, and extend from the left side of the pixel electrode **191** toward the right side of the pixel electrode **191**. The lower cutouts **93a**, **94a**, **95a**, and **96a** are respectively disposed in the lower portion of the pixel electrode **191** and the upper cutouts **93b**, **94b**, **95b**, and **96b** are disposed in the upper portion of the pixel electrode **191** with respect to the first storage electrode line **131a**. The upper cutouts **93b**, **94b**, **95b**, and **96b** and the lower cutouts **93b**, **94b**, **95b**, and **96b** are inclined with respect to the gate line **121** by an angle of about 45° and extend perpendicularly to each other. The transverse portion cutout **97b** is connected to the upper cutout **96b**.

[0067] The transverse portion **97a** of the first subpixel electrode **191a** is connected to the transverse portion **97b** of the second subpixel electrode **191b**.

[0068] Referring to FIG. 5, the direction controlling electrode **195** includes first, second, and third transverse portions **57**, **58a**, and **58b**, a vertical portion **59**, lower oblique portions **53a**, **55a**, and **56a**, upper oblique portions **53b**, **55b**, and **56b**, and a central portion **52**.

[0069] The first, second, and third transverse portions **57**, **58a**, and **58b** are parallel to the gate line **121**, and the vertical portion **59** is parallel to the data lines **171a** and **171b**. The upper oblique portions **53b**, **55b**, and **56b** have substantially the same shape as the upper cutouts **93b**, **95b**, and **96b** of the pixel electrode **191**, and the lower oblique portions **53a**, **55a**, and **56a** have substantially the same shape as the lower cutouts **93a**, **95a**, and **96a** of the pixel electrode **191**. Also, the central portion **52** has substantially the same shape as the central cutout **95** of the pixel electrode **191**, and the first transverse portion **57** has substantially the same shape as the transverse cutouts **97a** and **97b** of the pixel electrode **191**. When overlapping the direction controlling electrode **195** with the pixel electrode **191**, the vertical portion **59** and the second and third transverse portions **58a** and **58b** of the direction controlling electrode **195** are disposed outside the pixel electrode **191**, and the upper oblique portions **53b**, **55b**, and **56b**, the lower oblique portions **53a**, **55a**, and **56a**, and the central portion **52** are respectively inserted in the upper cutouts **93b**, **95b**, and **96b**, the lower cutouts **93a**, **95a**, and **96a**, and the central cutout **95** of the pixel electrode **191**.

[0070] The cutouts **93a**, **93b**, **94a**, **94b**, **95a**, **95b**, **96a**, and **96b** may be replaced with protrusion or depressions.

[0071] The contact assistants **81**, **82a**, and **82b** are respectively connected to the end portions **129**, **179a**, and **179b** of the gate line **121** and the data lines **171a** and **171b** through the contact holes **181**, **182a**, and **182b**, respectively. The contact assistants **81**, **82a**, and **82b** aid the adhesion of the exposed end portions **129**, **179a**, and **179b** of the gate lines **121** and the data lines **171a** and **171b** to external apparatuses, and protect these portions.

[0072] Next, the upper panel **200** will be described.

[0073] A light blocking member **220** is disposed on an insulating substrate **210**. The light blocking member **220** defines a plurality of openings facing the pixel electrode **191** and may be a black matrix. The light blocking member **220** prevents light leakage between the pixel electrodes **191**.

[0074] A plurality of color filters **230** is also disposed on the substrate **210**. The color filters **230** are disposed in the areas enclosed by the light blocking member **220**. The color filters **230** may extend in a longitudinal direction along the pixel electrodes **191**. Each color filter **230** may represent one of the primary colors, such as red, green, or blue.

[0075] A common electrode **270** is disposed on the color filters **230** and light blocking member **220**. The common electrode **270** does not have a cutout such that the common

electrode **270** includes a continuous surface. Also, a protrusion is not needed in the common electrode **270**. The common electrode **270** may be made of a transparent conductor such as ITO or IZO.

[0076] Alignment layers **11** and **21** to align the LC layer **3** are disposed on inside surfaces of the panels **100** and **200**, and polarizers **12** and **22** are installed on outside surfaces of the panels **100** and **200**, respectively.

[0077] The LCD may include a backlight unit (not shown) to supply light to the polarizers **12** and **22**, the panels **100** and **200**, and the LC layer **3**.

[0078] The LC layer **3** has negative dielectric anisotropy, and the LC molecules in the LC layer **3** are aligned such that their long axes are perpendicular to the surfaces of the panels **100** and **200** in the absence of an electric field. Therefore, light incident into the LC layer **3** cannot pass through the crossed polarizers **12** and **22** and is blocked.

[0079] Referring to FIG. 1 again, the gray voltage generator **800** generates two sets of gray voltages (or reference gray voltages) related to the transmittance of the pixels PX. However, the gray voltage generator **800** may generate only a given number of gray voltages (referred to as reference gray voltages) instead of generating all of the gray voltages. Gray voltages of one set have a positive value with respect to the common voltage V_{com} , while gray voltages of the other set have a negative value with respect to the common voltage V_{com} .

[0080] The gate driver **400** is connected to the gate lines G of the LC panel assembly **300** and synthesizes a gate-on voltage V_{on} and a gate-off voltage V_{off} to generate gate signals V_g , which are applied to the gate lines G.

[0081] The data driver **500** is connected to the data lines Da and Db of the LC panel assembly **300** and selects the gray voltages supplied from the gray voltage generator **800** and then applies a selected gray voltage to the data lines Da and Db as a data voltage V_d . Alternatively, when the grayscale voltage generator **800** generates only a predetermined number of reference grayscale voltages instead of all the grayscale voltages, the data driver **500** may generate the grayscale voltages for all the grayscale voltages by dividing the reference grayscale voltages and select the data signals among the generated grayscale voltages.

[0082] The storage electrode driver **700** is connected to the second storage electrode line Sb, and applies a storage electrode signal V_{st} as a periodic signal to the second storage electrode line Sb.

[0083] The signal controller **600** controls the gate driver **400**, the data driver **500**, and the storage electrode driver **700**.

[0084] Each driver **400**, **500**, **600**, **700**, and **800** may be installed directly on the LC panel assembly **300** in the form of at least one integrated circuit chip. Alternatively, each driver **400**, **500**, **600**, **700**, and **800** may be a tape carrier package (TCP) installed on a flexible printed circuit film (not shown) and attached to the LC panel assembly **300** or installed on a separate printed circuit board (not shown). Alternatively, the drivers **400**, **500**, **600**, **700**, and **800** may be integrated with the LC panel assembly **300** together with the signal lines G, Da, and Db, the film transistor switching elements Qa, Qb, and Qd, and the like. In addition, the drivers **400**, **500**, **600**, **700**, and **800** may be integrated as a single chip. In this case, at least one of the drivers **400**, **500**, **600**, **700**, and **800** or at least one circuit element making up the drivers **400**, **500**, **600**, **700**, and **800** may be disposed outside the single chip.

[0085] The operations of the LCD will now be explained in detail.

[0086] The signal controller **600** receives input image signals R, G, and B and input control signals to control display of

the input image signals R, G, and B from an external graphics controller (not shown). The input image signals R, G, and B include luminance information of each pixel PX, and the luminance information includes a determined number of gray levels, e.g., 1024 ($=2^{10}$), 256 ($=2^8$), or 64 ($=2^6$) gray levels. Examples of the input control signals include a vertical synchronization signal V_{sync} , a horizontal synchronization signal H_{sync} , a main clock signal MCLK, and a data enable signal DE.

[0087] The signal controller **600** processes the input image signals R, G, and B according to an operating condition of the LC panel assembly **300** based on the input image signals R, G, and B and the input control signals to generate a gate control signal CONT1, a data control signal CONT2, and the like, and thereafter sends the generated data control signal CONT1 to the gate driver **400**, the generated data control signal CONT2 and the processed image signal DAT to the data driver **500**, and the storage electrode control signal CONT3 to the storage electrode driver **700**.

[0088] The gate control signal CONT1 includes scan start signals STV to start a scan, and at least one clock signal to control an output period of the gate-on voltage V_{on} . The gate control signal CONT1 may further include an output enable signal OE to limit a duration time of the gate-on voltage V_{on} .

[0089] The data control signal CONT2 includes a horizontal synchronization start signal STH to initiate data transmission of the image signal DAT for a row [group] of pixels PX, a load signal LOAD to request application of the data signals to the data lines Da and Db, and a data clock signal HCLK.

[0090] The data control signal CONT2 may further include a reverse signal RVS to invert voltage polarity of the data signal with respect to the common voltage V_{com} (hereinafter, "voltage polarity of the data signal with respect to the common voltage" is abbreviated to "polarity of the data signal").

[0091] The storage electrode driver **700** applies storage electrode signal V_{st} to the second storage electrode line Sb according to the storage electrode control signal CONT3 transmitted from the signal controller **600**. The storage electrode signal V_{st} is periodically inverted with reference to the common voltage V_{com} .

[0092] The data driver **500** receives digital image signals DAT for a row of pixels PX according to the data control signal CONT2 transmitted from the signal controller **600**, and selects a grayscale voltage corresponding to each digital image signal DAT to convert the digital image signals DAT into analog data signals. Thereafter the data driver **500** applies the converted analog data signals to corresponding data lines Da and Db.

[0093] The gate driver **400** applies a gate-on voltage V_{on} to the gate lines G according to the gate control signal CONT1 transmitted from the signal controller **600** to turn on the first, second, and third switching elements Qa, Qb, and Qd connected to the gate lines G. Then, the data signals applied to the data lines Da and Db are applied to corresponding pixels PX through the turned-on first, second, and third switching elements Qa, Qb, and Qd.

[0094] A difference between a voltage of the data signal applied to the pixels PX and the common voltage V_{com} appears as a charged voltage of the first and second LC capacitors Clca and Clcb, that is, a pixel voltage. Also, a difference between a voltage of the data signal applied to the direction controlling electrode **195** and the common voltage V_{com} appears as a charged voltage of the third LC capacitor Clcd.

[0095] If the first, second, and third switching elements Qa, Qb, and Qd are turned off, and the pixel electrode **191** and the direction controlling electrode **195** are floated. However,

because the pixel electrode **191** and the direction controlling electrode **195**, along with the second storage electrode line **131b**, make up the capacitor C_{sts}, the voltage of the direction controlling electrode **195** changes according to the voltage of the second storage electrode line **131b** so that the voltages of the two electrodes **191** and **195** are different from each other. If the phase and the polarity of the second storage electrode signal V_{st} are appropriately controlled, the average voltage of the direction controlling electrode **195** corresponding to the common voltage V_{com} may be higher than the average voltage of the pixel electrode **191** corresponding to the common voltage V_{com}.

[0096] If the voltage differences between the common electrode **270** and the pixel electrode **191** and direction controlling electrode **195** are generated, a main electric field that is perpendicular to the surfaces of the display panels **100** and **200** is generated. LC molecules of the LC layer **3** are inclined so that a long axis thereof is perpendicular to a direction of an electric field. Hereinafter, both the pixel electrode **191** and the common electrode **270** are commonly referred to as "field generating electrodes".

[0097] The gap **91**, the cutouts **92**, **93a**, **93b**, **94a**, **94b**, **95a**, **95b**, **96a**, and **96b**, and the oblique sides of the pixel electrodes **191** distort the electric field to have a horizontal component that determines the tilt directions of the LC molecules. The horizontal component of the main electric field is perpendicular to the oblique edges of the cutouts **92**, **93a**, **93b**, **94a**, **94b**, **95a**, **95b**, **96a**, and **96b** and the oblique edges of the pixel electrodes **191**, and tends toward the inside or outside of the pixel electrode **191** according to the polarity of the voltage applied to the pixel electrode **191**. For example, if the voltage of the pixel electrode **191** is greater than the common voltage V_{com}, the horizontal component tends toward the outside of the pixel electrode **191**.

[0098] On the other hand, since the voltage difference between the direction controlling electrode **195** and the pixel electrode **191** is generated, a sub-electric field that has substantially a horizontal component that is parallel to the horizontal component of the main electric field is generated. As above-described, with reference to the common voltage V_{com}, since the voltage of the direction controlling electrode **195** is greater than the voltage of the pixel electrode **191**, the direction of the horizontal component of the sub-electric field is opposite the direction of the horizontal component of the main electric field, and the strength thereof is greater than that of the horizontal component of the main electric field. Therefore, the horizontal component of the electric field generated in the cutouts **92**, **93a**, **93b**, **95a**, **95b**, **96a**, and **96b** where the direction controlling electrode **195** is disposed is the same as the direction of the electric field generated in the gap **91** close thereto, the remaining cutouts **94a** and **94b**, or the oblique edges of the pixel electrode **191**.

[0099] As above-described, the cutouts **92**, **93a**, **93b**, **94a**, **94b**, **95a**, **95b**, **96a**, and **96b** divide the pixel electrode **191** into a plurality of sub-areas, and each sub-area has two major edges parallel to each other.

[0100] Since the LC molecules on each sub-area tilt perpendicular to the major edges and are influenced by the horizontal component of the electric field having the direction as above-described, the azimuthal distribution of the tilt directions are localized to four directions. In this way, the reference viewing angle of the LCD is increased by varying the tilt directions of the LC molecules.

[0101] On the other hand, one input image data is converted into a pair of output image data, and the pair of output image data provides different transmittances to the subpixel electrodes **191a** and **191b**, respectively. Accordingly, different

gamma curves appear in the two subpixels **191a** and **191b** and the gamma curve of one pixel PX is a curved line in which the gamma curves are combined. A combined gamma curve in the front side may be accorded with the reference gamma curve in the front side that is the most suitable for the liquid crystal panel assembly, and a combined gamma curve in the lateral side may be made closer to the reference gamma curve in the front side

[0102] Accordingly, the image data is converted to improve the side visibility. Furthermore, as above-described, the area of the second subpixel electrode **191b** to receive the relatively lower voltage is larger than the area of the first subpixel electrode **191a** such that distortion of the combined gamma curve in the lateral side may be minimized.

[0103] The arrangements of the LC molecules of the LC layer **3** are changed according to the magnitude of the voltage of the pixel electrode **191**, and the changes in polarization of the light incident to the LC layer **3** vary according to the arrangements of the LC molecules. The changes in the polarization are represented by the changes in transmittance by a polarizer attached on the display panel assembly **300**.

[0104] By repeating this procedure by a unit of a horizontal period (also referred to as "1H" and that is equal to one period of the horizontal synchronization signal H_{sync} and the data enable signal DE), all gate lines G₁-G_n are sequentially supplied with the gate-on voltage V_{on}, thereby applying the data voltages to all pixels PX to display an image for a frame.

[0105] When the next frame starts, the inversion signal RVS applied to the data driver **500** is controlled such that the polarity of the data voltages is reversed (which is referred to as frame inversion). The inversion signal RVS may also be controlled such that the polarity of the data voltages flowing in a data line is periodically reversed during one frame (for example, row inversion and dot inversion).

[0106] Now, a method for driving an LCD according to an exemplary embodiment of the present invention will be described in detail with reference to FIG. 8.

[0107] FIG. 8 is a waveform of a driving signal of an *i*th row pixel in an LCD according to an exemplary embodiment of the present invention.

[0108] Referring to FIG. 8, the polarities of the first and second data voltages V_{da} and V_{db}, which are applied to the first and second data lines Da and Db and the storage electrode signal V_{st} are inverted, with respect to the common voltage V_{com}, for every one frame period. The polarity of the storage electrode signal V_{st} is opposite to the polarities of the first and second data voltages V_{da} and V_{db}. The polarities of the first and second data voltages V_{da} and V_{db} applied to the first and second data lines Da and Db are positive when the gate signal V_g is applied to the gate line G with the gate-on voltage V_{on}. The direction controlling electrode voltage V_{dce}, the first subpixel electrode voltage V_{pa}, and the second subpixel electrode voltage V_{pb} are changed from negative polarity to positive polarity. Here, the direction controlling electrode **195** and the first subpixel electrode **191a** are charged with the same voltage V_{da}, and the second subpixel electrode **191b** is charged with the voltage V_{db}, which is smaller than the voltage V_{da}. The storage electrode signal V_{st} has negative polarity during the time.

[0109] If the gate signal V_g is changed to the gate-off voltage V_{off}, the direction controlling electrode voltage V_{dce} and the first and second subpixel electrode voltages V_{pa} and V_{pb} are dropped by the kickback voltage V_{kcb}. After that, the direction controlling electrode voltage V_{dce} is periodically changed according to the change of the storage electrode voltage V_{st}. Here, the direction controlling electrode voltage V_{dce} is increased by an arbitrary value ΔV_{dce} according to

the increase of the storage electrode signal V_{st} and is again returned to the original value in a periodic fashion, and the first and second subpixel electrode voltages V_{pa} and V_{pb} are respectively dropped by the kickback voltage V_{kb} and maintained with the resultant value.

[0110] The direction controlling electrode voltage ∇dce for the common electrode V_{com} is obtained by subtracting the value of the kickback voltage V_{kb} from the initial value of the direction controlling electrode voltage V_{dce} and adding the average value of the change amount ΔV_{dce} of the direction controlling electrode voltage V_{dce} . The voltages V_{pa} and V_{pb} of the first and second subpixel electrodes **191a** and **191b** is maintained by subtracting the kickback voltage V_{kb} from the initial value. Accordingly, the direction controlling electrode voltage ∇dce is maintained to be greater than the first subpixel electrode voltage ∇pa and the second subpixel electrode voltage ∇pb with reference to the common electrode voltage V_{com} .

[0111] Now, an LC panel assembly according to another exemplary embodiment of the present invention will be described in detail with the reference to FIG. 9.

[0112] FIG. 9 is an equivalent circuit diagram of a pixel in an LC panel assembly according to another exemplary embodiment of the present invention.

[0113] Referring to FIG. 9, an LC panel assembly **300** according to an exemplary embodiment of the present invention includes lower and upper panels **100** and **200** facing each other, and an LC layer **3** disposed therebetween.

[0114] The liquid crystal panel assembly **300** includes a plurality of signal lines G , D , S_a , and S_b , and a plurality of pixels PX connected thereto and arranged substantially in a matrix, as seen in the equivalent circuit diagram.

[0115] The signal lines G , D , S_a , and S_b include a plurality of gate lines G , a plurality of data lines D , and a pair of plurality of first and second storage electrode lines S_a and S_b transmitting storage electrode signals. The pixel includes two switching elements Q and Q_d , two LC capacitors C_{lc} and C_{ld} , two storage capacitors C_{st} and C_{std} , and a direction controlling capacitor C_{sts} .

[0116] Since the LC panel assembly shown in FIG. 9 includes one pixel electrode **191**, unlike the LC panel assembly of FIG. 2, one liquid crystal capacitor C_{lc} including the pixel electrode **191** and the common electrode **270** as two terminals is provided, and one storage capacitor C_{st} including the pixel electrode **191** and the first storage electrode line S_a as two terminals is provided.

[0117] In FIG. 9 and FIG. 2, constituent elements indicated by the same reference numerals have the same functions, and descriptions thereof are omitted.

[0118] As above-described, with reference to the common voltage, the direction controlling electrode voltage is higher than the pixel electrode voltage in exemplary embodiments of the present invention such that a wide viewing angle may be obtained without a cutout or a protrusion in/on the common electrode in the VA mode LCD.

[0119] It will be apparent to those skilled in the art that various modifications and variations can be made in the present invention without departing from the spirit or scope of the invention. Thus, it is intended that the present invention cover the modifications and variations of this invention provided they come within the scope of the appended claims and their equivalents.

What is claimed is:

1. A liquid crystal display, comprising:
 - a first thin film transistor;
 - a second thin film transistor;

a pixel electrode comprising a first cutout and an inclination direction determining member, the pixel electrode being connected to the first thin film transistor;

a direction controlling electrode connected to the second thin film transistor;

a first storage electrode overlapping with the pixel electrode and the direction controlling electrode, the first storage electrode to receive a first storage electrode signal having a first voltage; and

a second storage electrode overlapping with the direction controlling electrode, the second storage electrode to receive a second storage electrode signal having a second voltage that periodically changes.

2. The liquid crystal display of claim 1, wherein a voltage applied to the direction controlling electrode is greater than a voltage of the pixel electrode with reference to a third voltage.

3. The liquid crystal display of claim 1, wherein the pixel electrode and the direction controlling electrode are spaced apart from each other.

4. The liquid crystal display of claim 1, wherein the pixel electrode and the direction controlling electrode comprise the same material and are on the same layer.

5. The liquid crystal display of claim 1, further comprising:

- a common electrode facing the pixel electrode and the direction controlling electrode, the common electrode having a continuous surface.

6. The liquid crystal display of claim 1, further comprising:

- a data line connected to the first thin film transistor and the second thin film transistor; and
- a gate line connected to the first thin film transistor and the second thin film transistor.

7. The liquid crystal display of claim 6, wherein the inclination direction determining member comprises a first oblique portion that makes an oblique angle with the data line or the gate line.

8. The liquid crystal display of claim 7, wherein the oblique angle is substantially 45° .

9. The liquid crystal display of claim 7, wherein the first cutout comprises a second oblique portion parallel to the first oblique portion.

10. The liquid crystal display of claim 6, further comprising:

- an organic layer formed between the data line and the pixel electrode.

11. The liquid crystal display of claim 1, wherein at least a portion of the direction controlling electrode extends corresponding to the first cutout.

12. The liquid crystal display of claim 11, wherein at least a portion of the direction controlling electrode is exposed through the first cutout.

13. The liquid crystal display of claim 1, wherein the inclination direction determining member comprises a second cutout.

14. The liquid crystal display of claim 1, wherein the pixel electrode comprises a first subpixel electrode and a second subpixel electrode spaced apart from each other.

15. The liquid crystal display of claim 14, wherein a voltage applied to the first subpixel electrode is different from a voltage applied to the second subpixel electrode.

16. The liquid crystal display of claim 15, further comprising

- a third thin film transistor connected to the second subpixel electrode,

wherein the first subpixel electrode is connected to the first thin film transistor.

17. The liquid crystal display of claim **16**, further comprising

a first data line connected to the first thin film transistor and the second thin film transistor;

a second data line connected to the third thin film transistor; and

a gate line connected to the first thin film transistor, the second thin film transistor, and the third thin film transistor.

18. The liquid crystal display of claim **17**, wherein the first thin film transistor and the third thin film transistor each comprise a gate electrode, a source electrode, and a drain electrode, the gate electrodes of the first thin film transistor and the third thin film transistor are connected to each other, and the source electrodes of the first thin film transistor and the third thin film transistor are connected to each other.

19. A method for driving a liquid crystal display comprising a first liquid crystal capacitor and a second liquid crystal capacitor, comprising:

charging the first liquid crystal capacitor and the second liquid crystal capacitor;

maintaining the charged voltage of the first liquid crystal capacitor; and

periodically swinging the charged voltage of the second liquid crystal capacitor while maintaining the charged voltage of the first liquid crystal capacitor such that a voltage between two terminals of the second liquid crystal capacitor is greater than a voltage between two terminals of the first liquid crystal capacitor.

20. The method of claim **19**, wherein the liquid crystal display further comprises a third liquid crystal capacitor having a smaller charged voltage than the first liquid crystal capacitor, the method further comprising:

maintaining the charged voltage of the third liquid crystal capacitor; and

periodically swinging the charged voltage of the second liquid crystal capacitor while maintaining the charged voltage of the third liquid crystal capacitor such that the voltage between two terminals of the second liquid crystal capacitor is greater than a voltage between two terminals of the third liquid crystal capacitor.

* * * * *

专利名称(译)	液晶显示器及其驱动方法		
公开(公告)号	US20090040412A1	公开(公告)日	2009-02-12
申请号	US12/061193	申请日	2008-04-02
[标]申请(专利权)人(译)	三星电子株式会社		
申请(专利权)人(译)	SAMSUNG ELECTRONICS CO. , LTD.		
当前申请(专利权)人(译)	三星DISPLAY CO. , LTD.		
[标]发明人	LEE JUN WOO KIM HEE SEOP JUNG MEE HYE LEE SEUNG HOON LU JIANGANG		
发明人	LEE, JUN-WOO KIM, HEE-SEOP JUNG, MEE-HYE LEE, SEUNG-HOON LU, JIANGANG		
IPC分类号	G02F1/133 G02F1/1368		
CPC分类号	G02F1/133707 G02F1/136213 G02F1/13624 G09G2320/028 G09G2300/0443 G09G2300/0447 G09G2300/0876 G09G3/3648		
优先权	1020070078924 2007-08-07 KR		
其他公开文献	US7990504		
外部链接	Espacenet USPTO		

摘要(译)

液晶显示器包括第一和第二薄膜晶体管，包括第一切口和倾斜方向确定构件并连接到第一薄膜晶体管的像素电极，连接到第二薄膜晶体管的方向控制电极，第一存储电极与像素电极和方向控制电极重叠并施加具有第一电压的第一存储电极信号，和与方向控制电极重叠的第二存储电极，以接收具有周期性变化的第二电压的第二存储电极信号。

