



US 20080211998A1

(19) **United States**

(12) **Patent Application Publication**  
**Liu et al.**

(10) **Pub. No.: US 2008/0211998 A1**  
(43) **Pub. Date: Sep. 4, 2008**

(54) **PIXEL ELECTRODE STRUCTURE FOR A LIQUID CRYSTAL DISPLAY WITH A HIGH APERTURE RATIO**

(30) **Foreign Application Priority Data**

Jun. 7, 2002 (TW) ..... 91112394

(75) Inventors: **Hsiang-Lung Liu**, Taoyuan Hsien (TW); **Hsu-Ho Wu**, Hsinchu (TW)

**Publication Classification**

Correspondence Address:  
**THOMAS, KAYDEN, HORSTEMEYER & RISLEY, LLP**  
**600 GALLERIA PARKWAY, S.E., STE 1500**  
**ATLANTA, GA 30339-5994 (US)**

(51) **Int. Cl.**  
**G02F 1/1343** (2006.01)  
**G02F 1/1335** (2006.01)

(52) **U.S. Cl.** ..... **349/96; 349/139**

(73) Assignee: **HANNSTAR DISPLAY CORP.**, Taipei (TW)

(57) **ABSTRACT**

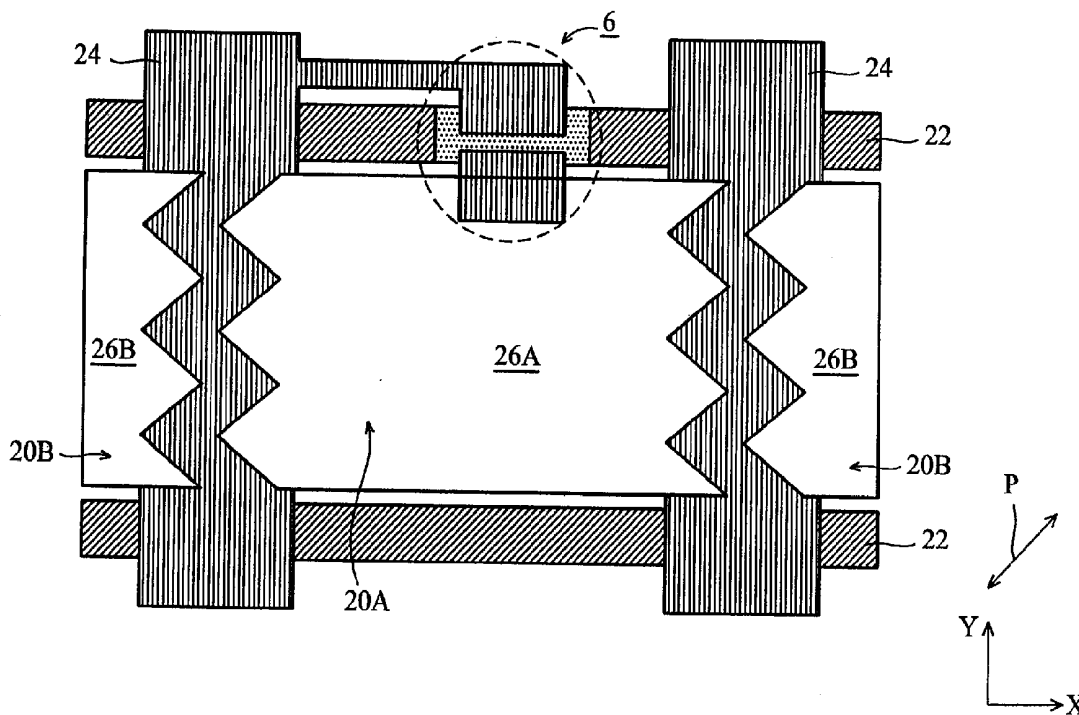
(21) Appl. No.: **12/120,553**

(22) Filed: **May 14, 2008**

**Related U.S. Application Data**

(60) Division of application No. 11/423,546, filed on Jun. 12, 2006, which is a continuation of application No. 10/873,098, filed on Jun. 21, 2004, now Pat. No. 7,110,077, which is a continuation of application No. 10/351,792, filed on Jan. 27, 2003, now Pat. No. 6,771,345.

A pixel electrode structure for a liquid crystal display with a high aperture ratio increases the aperture ratio and eliminates Mura phenomenon. Any two adjacent pixel electrodes are disconnected to each other. Each pixel electrode comprises a first-lengthwise periphery that overlaps a first-adjacent data line to form a first overlapping portion, and a second-lengthwise periphery that overlaps a second-adjacent data line to form a second overlapping portion. The first-lengthwise periphery and the second-lengthwise periphery have an identical triangle-wave profile and are symmetrical to each other. The triangle-wave profile is formed by connecting a plurality of right-angled and equilateral triangles.



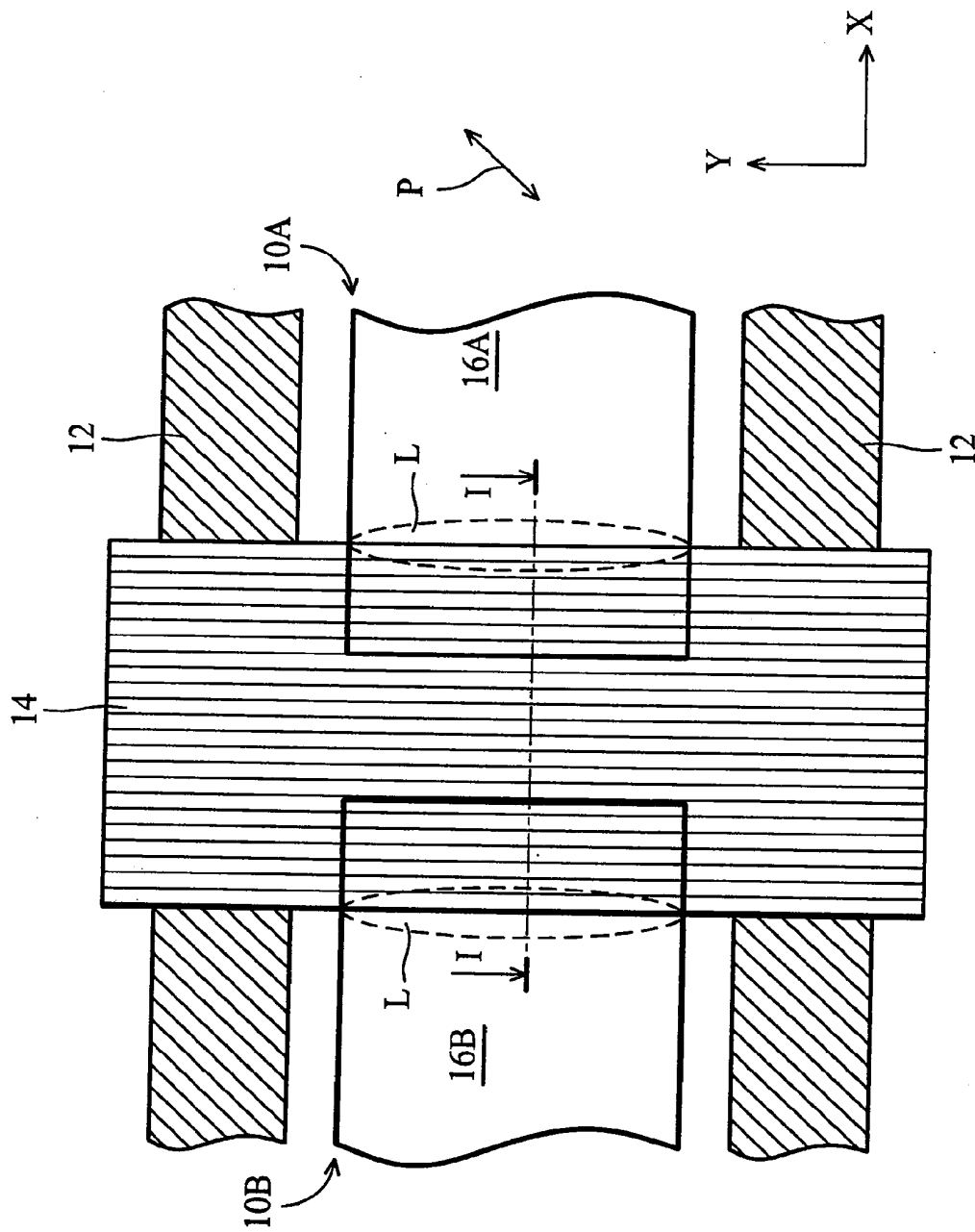


FIG. 1 (PRIOR ART)

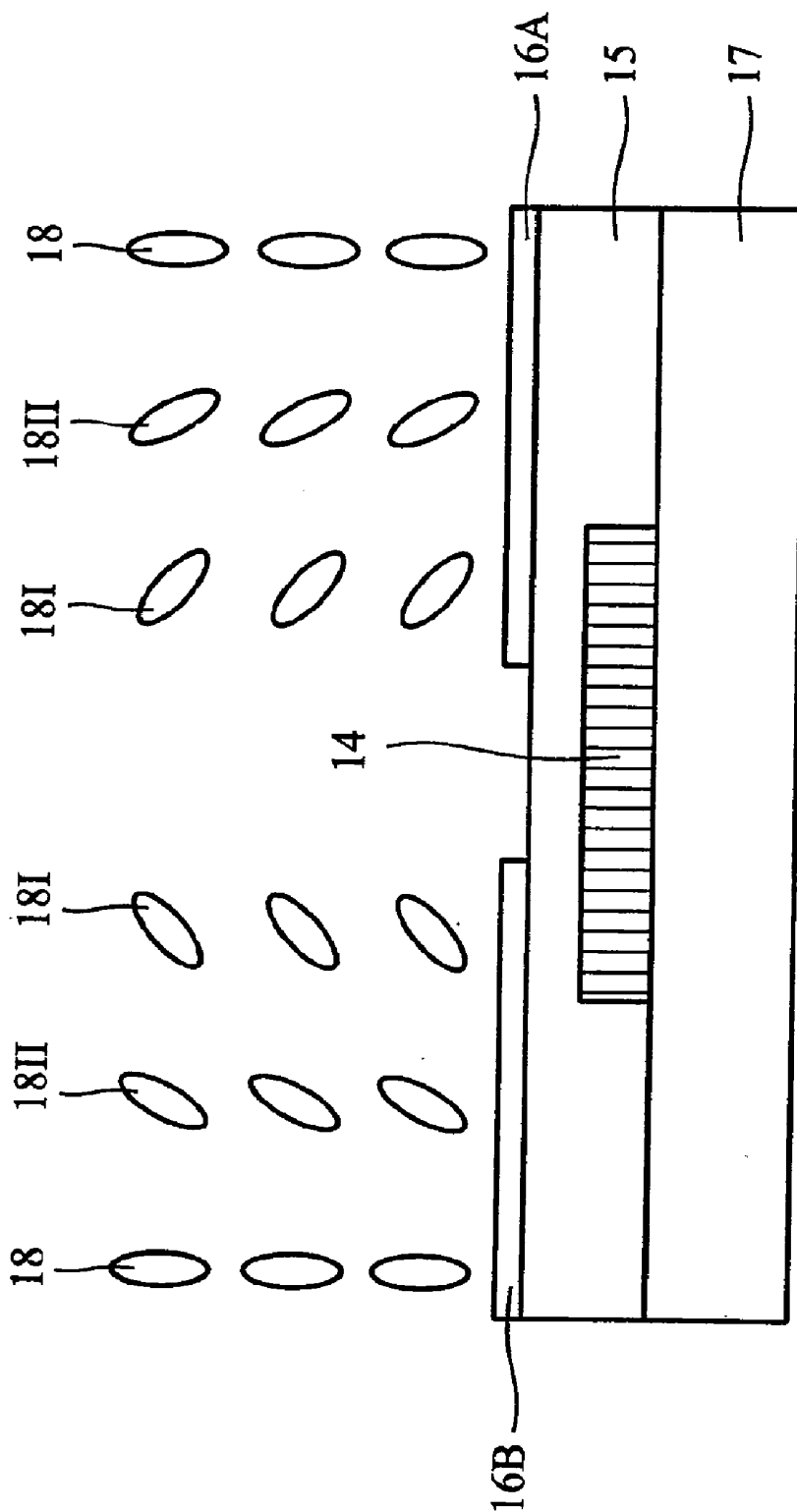


FIG. 2 ( PRIOR ART )

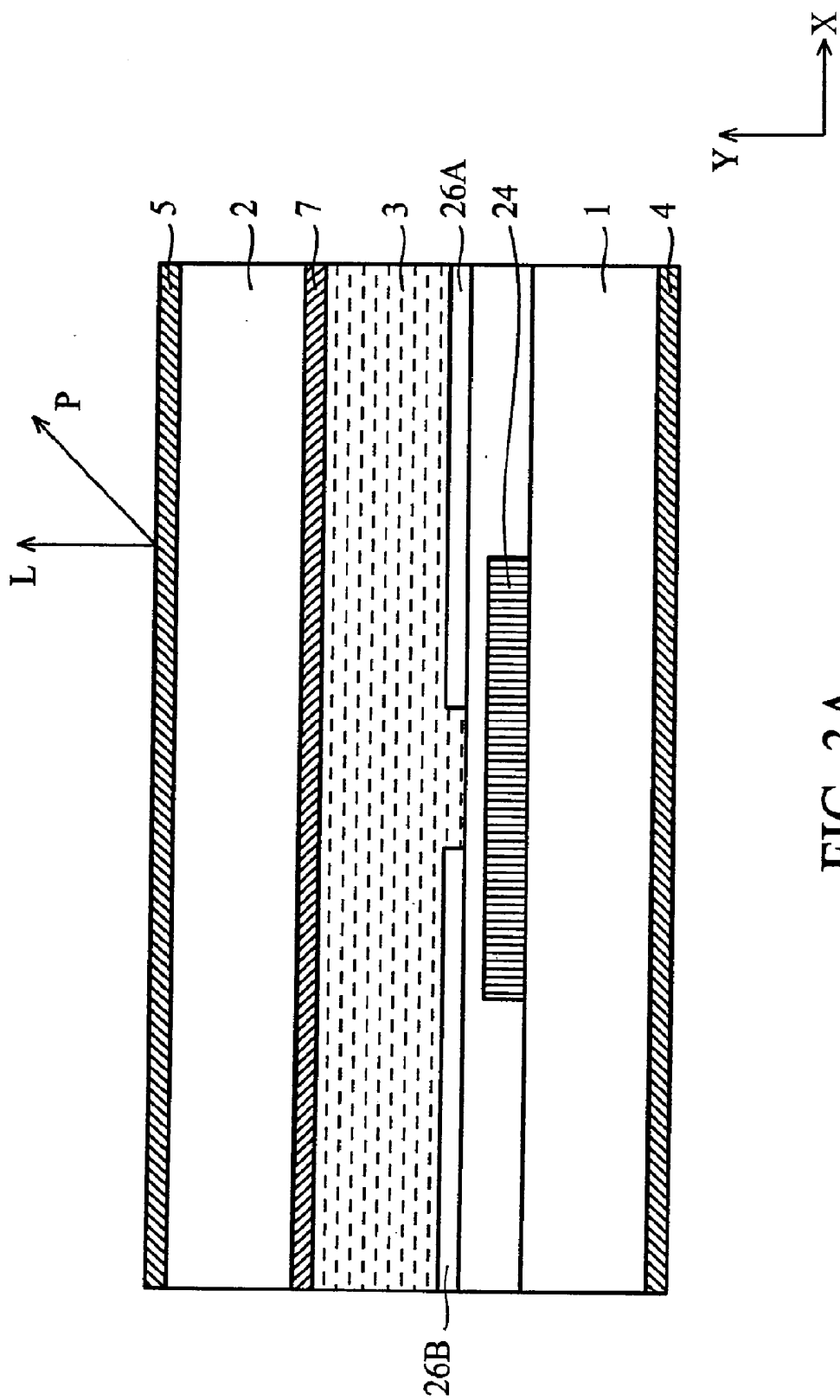


FIG. 3A

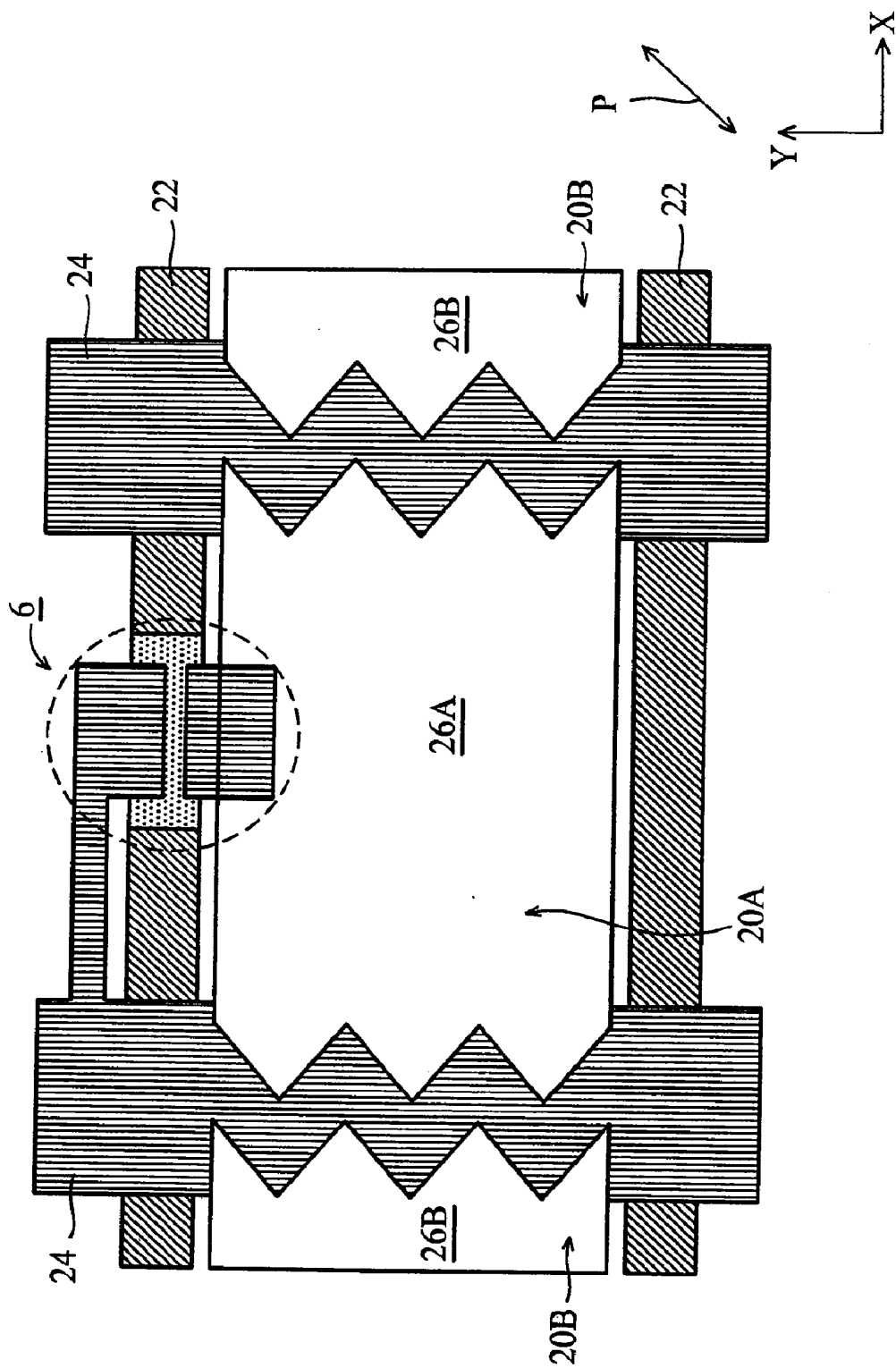


FIG. 3B

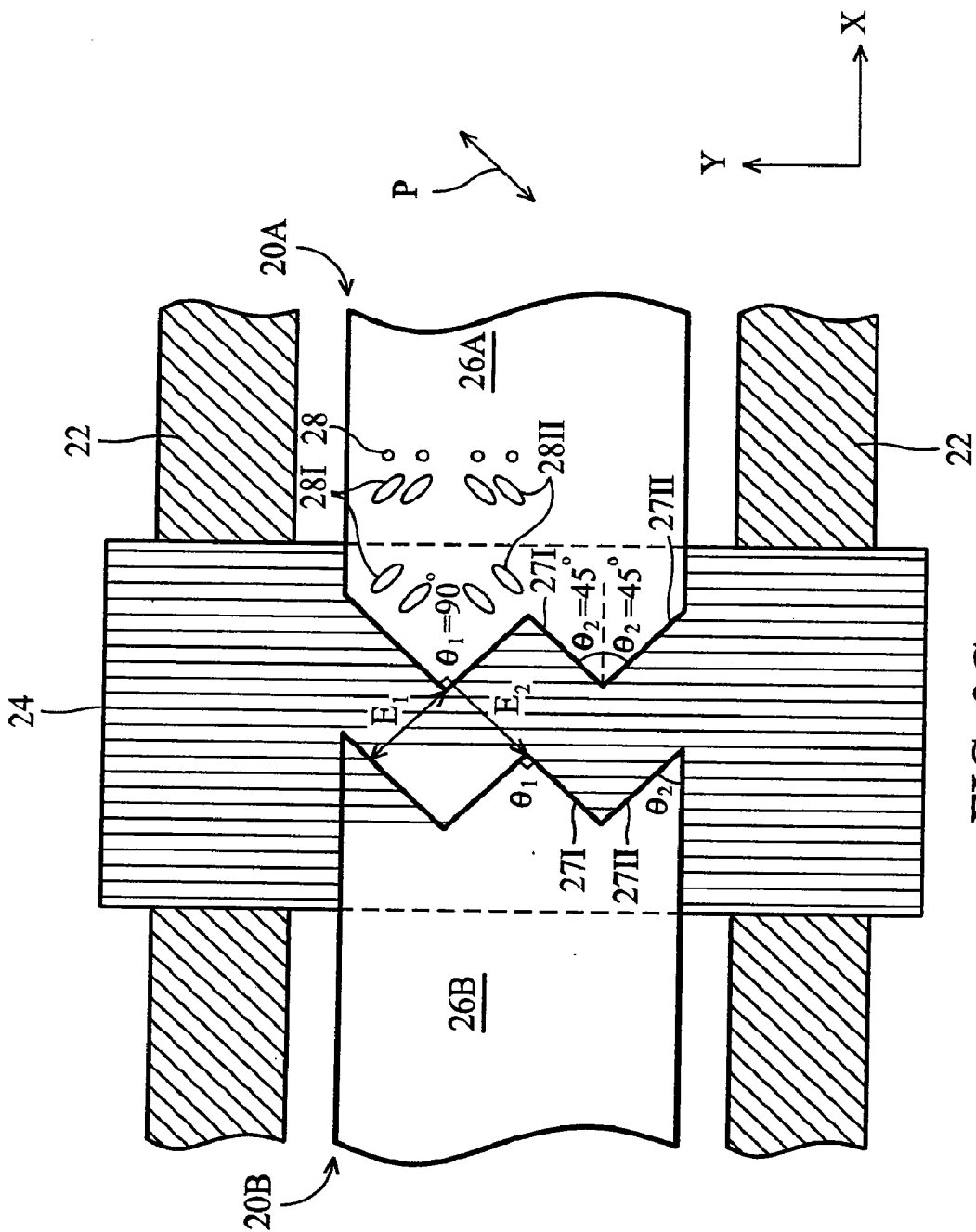


FIG. 3C



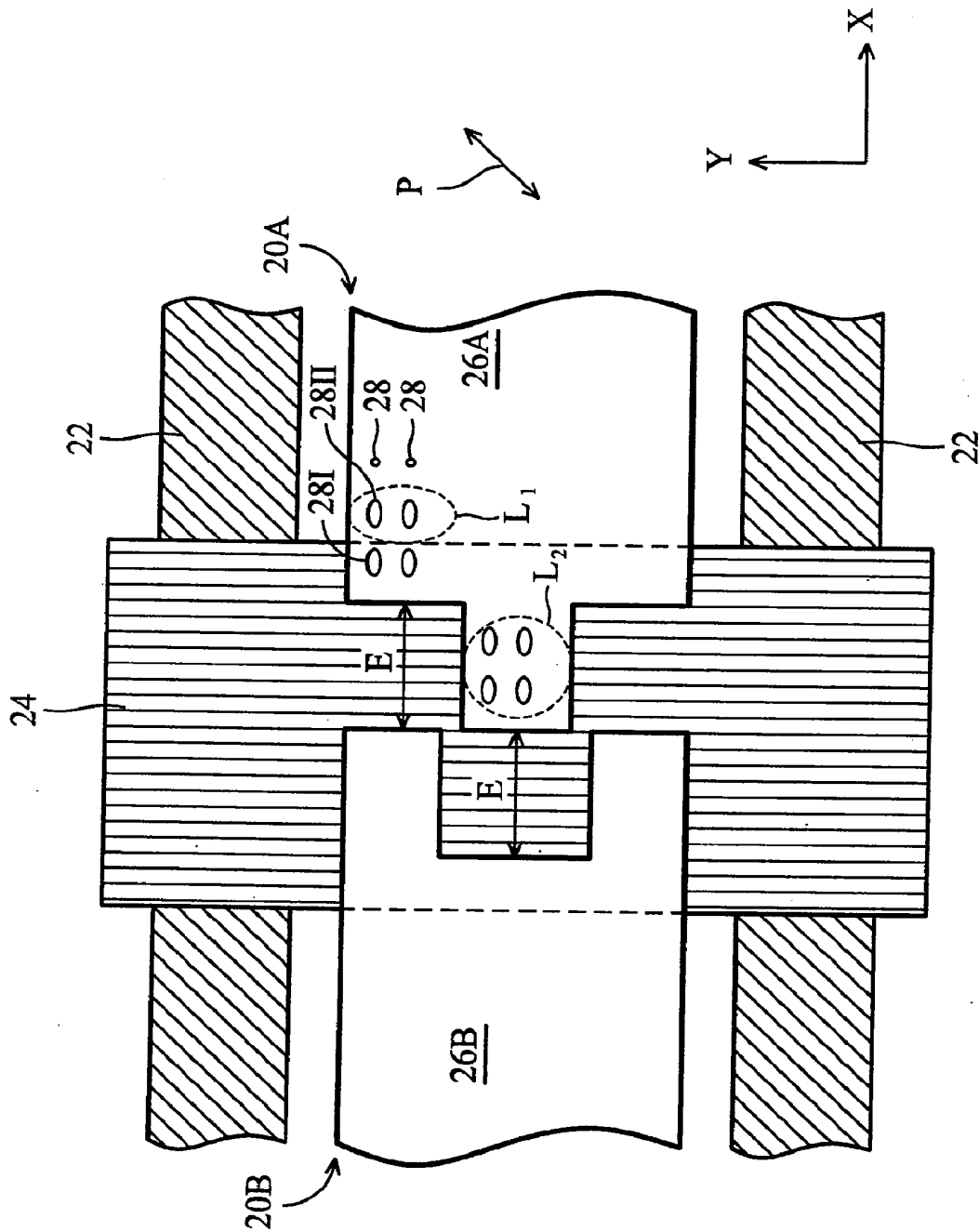


FIG. 5

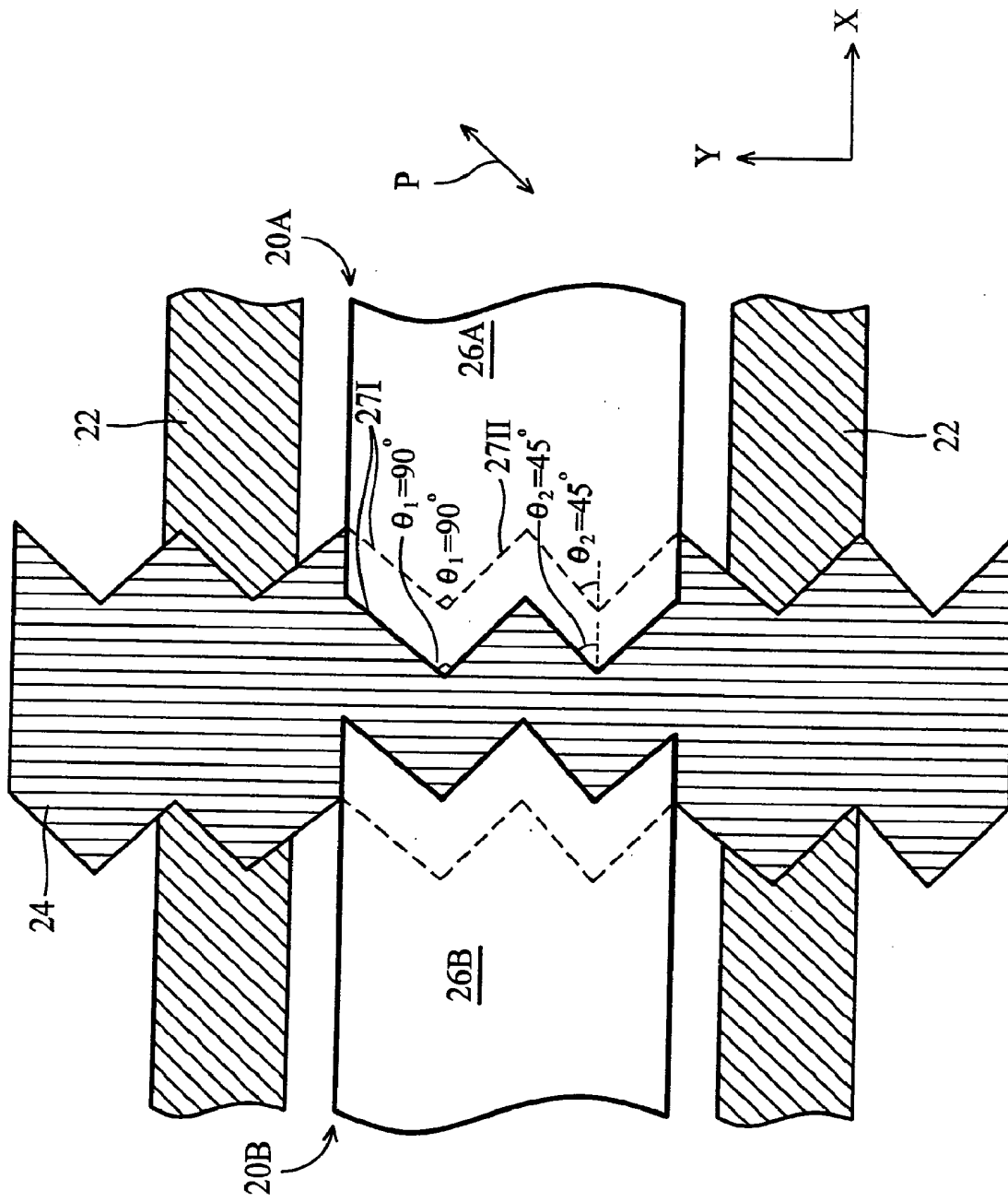


FIG. 6

**PIXEL ELECTRODE STRUCTURE FOR A  
LIQUID CRYSTAL DISPLAY WITH A HIGH  
APERTURE RATIO**

CROSS REFERENCE TO RELATED  
APPLICATIONS

**[0001]** This application is a divisional application of Ser. No. 11/423,546, filed Jun. 12, 2006, which is a continuation application of Ser. No. 10/873,098, filed Jun. 21, 2004, now U.S. Pat. No. 7,110,077, which was a continuation application of Ser. No. 10/351,792, filed Jan. 27, 2003, now U.S. Pat. No. 6,771,345, which claimed the priority benefit of Taiwan patent application No. 091112394, filed on Jun. 7, 2002.

BACKGROUND OF THE INVENTION

**[0002]** 1. Field of the Invention

**[0003]** The invention relates to a liquid crystal display (LCD) that has a high aperture ratio (HAR), and more particularly, to a pixel electrode structure for the LCD with HAR.

**[0004]** 2. Description of the Related Art

**[0005]** As resolutions of liquid crystal display (LCD) increase, aperture ratio of the LCD becomes more and more insufficient. Recently, color filter on array (COA) technology, has been developed to provide a LCD of high aperture ratio. In the HAR process, the color filter process is integrated with the TFT array process on the same glass substrate, thus the aperture ratio of the TFT-LCD device is increased to effectively improve brightness of the panel, and the step of attachment/alignment between a color filter substrate and a TFT array substrate is omitted to improve yield and decrease process costs. Moreover, in the HAR process, an overlapping portion is formed between a transparent pixel electrode and a data line to decrease the required area of a black matrix (BM) layer, resulting in a higher aperture ratio in the TFT-LCD device.

**[0006]** FIG. 1 is a top view showing an electrode structure in a pixel of a conventional TFT-LCD device formed using a HAR process. FIG. 2 is a sectional diagram along line I-I of FIG. 1 showing the rotating orientations of liquid crystal molecules in the conventional TFT-LCD device using a HAR process.

**[0007]** The conventional TFT-LCD device comprises a plurality of traversing gate lines **12** and data lines **14** extending lengthwise to define a plurality of pixels **10** in a matrix, each pixel **10** comprising a pixel electrode **16** and a TFT. Using one data line **14** as the boundary, a first pixel **10A** is covered by a first pixel electrode **16A**, and a second pixel **10B** is covered by a second pixel electrode **16B**. Also, the periphery of the first pixel electrode **16A** overlaps one side portion of the data line **14**, the periphery of the second pixel electrode **16A** overlaps another side portion of the data line **14**, and a predetermined distance is kept to space the first pixel electrode **16A** from the second pixel electrode **16B** over the data line **14**. Further, an arrow P indicates a light-polarization planar direction on a polarizer, a light-entry direction.

**[0008]** During a HAR process on a TFT array glass substrate **17**, a first metal layer is patterned as the gate lines **12**, and then an insulating layer **15** is deposited to cover the gate lines **12** and the glass substrate **17**. Next, processes corresponding to TFT are performed on a predetermined area of the gate line **12**, and a second metal layer is patterned as the

data lines **14**. Next, a transparent conductive layer is patterned as the first pixel electrode **16A** and the second pixel electrode **16B**.

**[0009]** In a case using TN-type (twisted nematic type) LCD, when an extra voltage exceeds a critical value, the liquid crystal molecules **18** originally parallel to the alignment film are rotated to become perpendicular to the alignment layer in accordance with the magnitude of the lengthwise electric field. However, a transverse electric field is generated between the periphery of the first pixel electrode **16A** and the periphery of the second pixel electrode **16B**, thus the inclined directions of the liquid crystal molecules **18I** and **18II** near the periphery of the pixel electrodes **16A** and **16B** are influenced by the lengthwise and transverse electric field. Also, when an included angle between the arrow P (a light-polarization planar direction on a polarizer) and the long-axis direction of the liquid crystal molecule **18I** is 45°, an ellipsoidal polarized light caused by birefringence effect may pass an analyzer perpendicular to the polarizer to result in light leakage. With regard to the rotating orientation of the liquid crystal molecules **18II** over the sidewall of the data line **14**, however, a Mura phenomenon occurs, manifesting as non-uniform color difference, to form a light leakage area L.

**[0010]** In another attempt to solve the above-described problems, the width of the data line **14** is increased to shield the light leakage area L, but this decreases the aperture ratio of the TFT-LCD device.

SUMMARY OF THE INVENTION

**[0011]** Accordingly, an object of the invention is to provide a pixel electrode structure in an LCD to increase the aperture ratio and eliminate Mura phenomenon near the overlapping portion between the pixel electrode and the data line.

**[0012]** To achieve these and other aims, the invention provides a pixel electrode structure of a liquid crystal display with a high aperture ratio. A first substrate and a second substrate are disposed parallel to each other, such that an internal space is formed between the interior surface of the first substrate and the interior surface of the second substrate. A liquid crystal layer is formed in the internal space. At least one polarizer is formed on the exterior surface of the first substrate or the exterior surface of the substrate. A plurality of parallel gate lines is transversely formed on the interior surface of the first substrate. A plurality of data lines parallel and extends lengthwise on the interior surface of the first substrate. A plurality of pixels is defined by the gate lines and the data lines in a matrix, in which each pixel comprises at least one TFT formed on the interior surface of the first substrate and near the intersection of the gate line and the data line, a common electrode on the interior surface of the second substrate, covering the pixel, and a pixel electrode on the interior surface of the first substrate, covering the pixel.

**[0013]** In one preferred embodiment, no two adjacent pixel electrodes are connected to each other. Each pixel electrode comprises a first-lengthwise periphery that overlaps a first-adjacent data line to form a first overlapping portion, and a second-lengthwise periphery that overlaps a second-adjacent data line to form a second overlapping portion. The first-lengthwise periphery and the second-lengthwise periphery have an identical triangle-wave profile and are symmetrical to each other. The triangle-wave profile is formed by connecting a plurality of right-angled and equilateral triangles.

**[0014]** In another preferred embodiment, no two adjacent pixel electrodes are connected to each other. Each pixel elec-

trode comprises a first-lengthwise periphery that overlaps a first-adjacent data line to form a first overlapping portion, and a second-lengthwise periphery that overlaps a second-adjacent data line to form a second overlapping portion. The first-lengthwise periphery and the second-lengthwise periphery have an identical square-wave profile, and the square-wave profile is formed by connecting a square protrusion and a square indentation in sequence. The square protrusion of the first-lengthwise periphery corresponds in position to the square indentation of the second-lengthwise periphery, and the square indentation of the first-lengthwise periphery corresponds in position to the square protrusion of the second-lengthwise periphery.

#### DESCRIPTION OF THE DRAWINGS

[0015] For a better understanding of the present invention, reference is made to a detailed description to be read in conjunction with the accompanying drawings, in which:

[0016] FIG. 1 is a top view showing an electrode structure in a pixel of a conventional TFT-LCD device with high aperture ratio.

[0017] FIG. 2 is a sectional diagram along line I-I of FIG. 1 showing the rotating orientations of liquid crystal molecules in the conventional TFT-LCD device with high aperture ratio.

[0018] FIG. 3A is a sectional diagram of an electrode structure in a pixel of a TFT-LCD device according to the first embodiment of the present invention.

[0019] FIGS. 3B and 3C are top views of an electrode structure in a pixel of a TFT-LCD device according to the first embodiment of the present invention.

[0020] FIG. 4 is a view of an electrode structure in a pixel of a TFT-LCD device according to the second embodiment of the present invention.

[0021] FIG. 5 is a view of an electrode structure in a pixel of a TFT-LCD device according to the third embodiment of the present invention.

[0022] FIG. 6 is a view of an electrode structure in a pixel of a TFT-LCD device according to the fourth embodiment of the present invention.

#### DETAILED DESCRIPTION OF THE INVENTION

##### First Embodiment

[0023] A first embodiment of the present invention is now described with reference to FIGS. 3A through 3C. FIG. 3A is a sectional diagram of an electrode structure in a pixel of a TFT-LCD device according to the first embodiment of the present invention. FIGS. 3B and 3C are top views of an electrode structure in a pixel of a TFT-LCD device according to the first embodiment of the present invention.

[0024] In FIG. 3A, the TFT-LCD device comprises a lower substrate 1 and an upper substrate 2 parallel to each other, and a liquid crystal layer 3 in the internal space between the lower substrate 1 and the upper substrate 2. A lower polarizer 4 is formed on the exterior surface of the lower substrate 1, an upper polarizer 5 is formed on the exterior surface of the upper substrate 2, and a common electrode 7 is formed on the interior surface of the upper substrate 2. An arrow L indicates a light-incident direction, and an arrow P indicates a light-entry direction (a light-polarization planar direction of the polarizer 4 and 5). The included angle between the arrow P and the X axis is  $45^\circ$ .

[0025] In FIGS. 3B and 3C, on the interior surface of the lower substrate 1, a plurality of transverse-extending gate

lines 22 and a plurality of lengthwise-extending data lines 24 are patterned to define a plurality of pixels 20 in a matrix. Each of the pixels 20 comprises a pixel electrode 26 and a TFT 6. Using one data line 24 as the boundary, a first pixel area 20A is covered by a first pixel electrode 26A, and a second pixel area 20B is covered by a second pixel electrode 26B. Also, the periphery of the first pixel electrode 26A overlaps one side portion of the data line 24, the periphery of the second pixel electrode 26A overlaps another side portion of the data line 24, and a predetermined distance is kept to space the first pixel electrode 26A from the second pixel electrode 26B over the data line 24.

[0026] The first key feature of the first embodiment is that the periphery of the pixel electrode is a triangle-wave profile. Particularly, within one overlapping portion between the first pixel electrode 26A and the data line 24, the periphery of the first pixel electrode 26A is a triangle-wave profile. Similarly, within the other overlapping portion between the second pixel electrode 26B and the data line 24, the periphery of the second pixel electrode 26B is a triangle-wave profile.

[0027] Preferably, in FIG. 3C, the triangle-wave profile is formed by connecting a plurality of right-angled and equilateral triangles. For example, each triangle constitutes a first hypotenuse 27I (upper right toward lower left), a right angle  $\theta_1$ , and a second hypotenuse 27II (upper left toward lower right). Thus, the angle  $\theta_1$  at the protruding portion of the triangle-wave profile is  $90^\circ$ , the included angle  $\theta_2$  between the first hypotenuse 27I and the X axis is  $45^\circ$ , and the included angle  $\theta_2$  between the second hypotenuse 27II and the X axis is  $45^\circ$ . Also, the first hypotenuse 27I of the first pixel electrode 26A is parallel to the first hypotenuse 27I of the second pixel electrode 26B, and the second hypotenuse 27II of the first pixel electrode 26A is parallel to the second hypotenuse 27II of the second pixel electrode 26B.

[0028] The second key feature of the first embodiment is that the overlapping portion between the pixel electrode 26 and the data line 24 is larger than the total area of the triangles. Preferably, the width of the data line 24 is about  $10 \mu\text{m}$ .

[0029] In a case using TN-type (twisted nematic type) LCD with a parallel-treatment alignment film, when an extra voltage exceeds a critical value, the liquid crystal molecules 28 originally parallel to the alignment film are rotated to become perpendicular to the alignment layer in accordance with the magnitude of the lengthwise electric field. With regard to the rotating orientation of the liquid crystal molecules 28I and 28II near the overlapping portion between the data line 24 and the periphery of the first pixel electrode 26A, a transverse electric field generated between the periphery of the first pixel electrode 26A and the periphery of the second pixel electrode 26B is influenced by the triangle-wave profile so as to incline. For example, an arrow  $E_1$  indicates a first-inclined electric field generated between the first hypotenuse 27I of the first pixel electrode 26A and the first hypotenuse 27I of the second pixel electrode 26B. An arrow  $E_2$  indicates a second-inclined electric field generated between the second hypotenuse 27II of the first pixel electrode 26A and the second hypotenuse 27II of the second pixel electrode 26B. Therefore, the first liquid crystal molecule 28I rotates in the direction of the arrow  $E_1$ , and the second liquid crystal molecule 28II rotates in the direction of the arrow  $E_2$ .

[0030] Concerning the light-polarization planar direction on the polarizer shown by the arrow P, an included angle between the arrow P and the long-axis direction of the first liquid crystal molecule 28I is  $90^\circ$ , and the long-axis direction

of the second liquid crystal molecule **28II** is parallel to the arrow P. This avoids birefringence effect, that is, no ellipsoidal polarized light passes an analyzer. Thus, Mura phenomenon does not occur near the boundary of the data line **24**, eliminating light leakage.

**[0031]** The rotating orientations of liquid crystal molecules near the overlapping portion between the data line **24** and the periphery of the second pixel electrode **26B** are similar to the above-described phenomenon, with no need for further description.

#### Second Embodiment

**[0032]** FIG. **4** is a view of an electrode structure in a pixel of a TFT-LCD device according to the second embodiment of the present invention. Most of the electrode structure in the second embodiment is similar to the first embodiment, and the identical parts are omitted with no need for further description. The difference is that the width of the data line **24** is reduced to make the area of the overlapping portion equal to the total area of the triangles. This can achieve the same advantages as described in the first embodiment. Also, by reducing the width of the data line **24** to achieve 3~10  $\mu\text{m}$ , the aperture ratio of the TFT-LCD device is further improved.

#### Third Embodiment

**[0033]** FIG. **5** is a view of an electrode structure in a pixel of a TFT-LCD device according to the third embodiment of the present invention. Most of the electrode structure in the third embodiment is similar to the first embodiment, and the identical parts are omitted with no need for further description. The difference is that the periphery of the first pixel electrode **26A** is a square-wave profile, and the periphery of the second pixel electrode **26B** is a square-wave profile. The square-wave profile is formed by connecting a square protrusion and a square indentation in sequence. Particularly, the square protrusions of the first pixel electrode **26A** correspond in position to the square indentations of the second pixel electrode **26B**, and the square indentations of the first pixel electrode **26A** correspond in position to the square protrusions of the second pixel electrode **26B**.

**[0034]** In a case using TN-type (twisted nematic type) LCD with a parallel-treatment alignment film, when an extra voltage exceeds a critical value, the liquid crystal molecules **28** originally parallel to the alignment film are rotated to become perpendicular to the alignment layer in accordance with the magnitude of the lengthwise electric field. With regard to the rotating orientation of the liquid crystal molecules **28I** and **28II** near the overlapping portion between the data line **24** and the periphery of the first pixel electrode **26A**, a transverse electric field, as shown by an arrow E, is generated between the periphery of the first pixel electrode **26A** and the periphery of the second pixel electrode **26B**. Therefore, the rotating orientations of the liquid crystal molecules **28I** and **28II** are influenced by the transverse electric field E and the lengthwise electric field.

**[0035]** Concerning a light-polarization planar direction on the polarizer as shown by the arrow P, when an included angle between the arrow P and the long-axis direction of the liquid crystal molecule **28I** or **28II** is  $45^\circ$ , an ellipsoidal polarized light caused by birefringence effect may pass an analyzer to cause Mura phenomenon, resulting in a first light leakage area  $L_1$  near the square indentation and a second leakage area  $L_2$

near the square protrusion. However, since the data line **24** shields the second leakage area  $L_2$ , Mura phenomenon is eliminated.

**[0036]** The rotating orientations of liquid crystal molecules over the overlapping portion between the data line **24** and the periphery of the second pixel electrode **26B** is similar to the above-described phenomenon with no need for further description.

#### Fourth Embodiment

**[0037]** FIG. **6** is a view of an electrode structure in a pixel of a TFT-LCD device according to the fourth embodiment of the present invention. Most of the electrode structure in the fourth embodiment is similar to the first embodiment, and the identical parts are omitted with no need for further description. The difference is that each sidewall of the data line **24** is a triangle-wave profile; with the features of the triangle-wave profile the same as the first pixel electrode **26A** and the second pixel electrode **26B**. Preferably, the triangle-wave profile is formed by connecting a plurality of right-angled and equilateral triangles. Each triangle constitutes a first hypotenuse **27I** (upper right toward lower left), a right angle, and a second hypotenuse **27II** (upper left toward lower right). Thus, the angle  $\theta_1$  at the protruding portion of the triangle-wave profile is  $90^\circ$ , the included angle  $\theta_2$  between the first hypotenuse **27I** and X axis is  $45^\circ$ , and the included angle  $\theta_2$  between the second hypotenuse **27II** and X axis is  $45^\circ$ .

**[0038]** Also, the first hypotenuse **27I** of the data line **24** is parallel to the first hypotenuse **27I** of the first pixel electrode **26A** and parallel to the first hypotenuse **27I** of the second pixel electrode **26B**, and the second hypotenuse **27II** of the data line **24** is parallel to the second hypotenuse **27II** of the first pixel electrode **26A** and parallel to the second hypotenuse **27II** of the second pixel electrode **26B**.

**[0039]** While the invention has been described by way of example and in terms of the preferred embodiments, it is to be understood that the invention is not limited to the disclosed embodiments. To the contrary, it is intended to cover various modifications and similar arrangements (as would be apparent to those skilled in the art). Therefore, the scope of the appended claims should be accorded the broadest interpretation so as to encompass all such modifications and similar arrangements.

What is claimed is:

1. A liquid crystal display, comprising:
  - a first substrate and a second substrate disposed parallel to each other;
  - a gate line and a data line formed on the first substrate;
  - a first pixel electrode connect with the data line via a switch element;
  - a plurality of liquid crystal molecules formed between the first substrate and the second substrate and each one having a axis direction; and
  - a polarizer formed on the exterior of the first substrate, wherein the polarizer has a light-polarization planar direction, and the axis direction of the liquid crystal molecule near the periphery of the first pixel electrode is perpendicular to the light-polarization planar direction.
2. The liquid crystal display as claimed in claim 1, wherein the axis direction of the liquid crystal molecule is a long-axis direction.
3. The liquid crystal display as claimed in claim 1, wherein a sidewall of the data line is a triangle-wave profile.

4. The liquid crystal display as claimed in claim 3, wherein the triangle-wave profile is formed by connecting a plurality of right-angled triangles.

5. The liquid crystal display as claimed in claim 3, wherein the triangle-wave profile is formed by connecting a plurality of equilateral triangles.

6. The liquid crystal display as claimed in claim 3, wherein the sidewall of the data line is identical and symmetrical to a periphery of the first pixel electrode.

7. The liquid crystal display as claimed in claim 1, wherein a periphery of the first pixel electrode is a triangle-wave profile.

8. The liquid crystal display as claimed in claim 7, wherein the triangle-wave profile is formed by connecting a plurality of right-angled triangles.

9. The liquid crystal display as claimed in claim 7, wherein the triangle-wave profile is formed by connecting a plurality of equilateral triangles.

10. The liquid crystal display as claimed in claim 7, further comprising a second pixel, and the periphery of the first pixel electrode is correspond in position to a periphery of the second pixel electrode next to the first pixel electrode.

11. The liquid crystal display as claimed in claim 1, wherein the first pixel electrode has a first-lengthwise periphery that overlaps a first-adjacent data line to form a first overlapping portion.

12. The liquid crystal display as claimed in claim 1, further comprising a polarizer formed on the exterior of the second substrate.

13. The liquid crystal display as claimed in claim 1, wherein the width of the data line is about 3~10  $\mu\text{m}$ .

14. A liquid crystal display, comprising:

a first substrate and a second substrate disposed parallel to each other;

a gate line and a data line formed on the first substrate;

a first pixel electrode connect with the data line via a switch element, and the first pixel electrode having a square-wave profile formed over the data line;

a plurality of liquid crystal molecules formed between the first substrate and the second substrate and each one having a axis direction; and

a polarizer formed on the exterior of the first substrate, wherein the polarizer having a light-polarization planar direction, and the axis direction of the liquid crystal molecule near the periphery of the first pixel electrode is included 45° angle to the light-polarization planar direction.

15. The liquid crystal display as claimed in claim 14, wherein the axis direction of the liquid crystal molecule is a long-axis direction.

16. The liquid crystal display as claimed in claim 14, further comprising a second pixel, and the periphery of the first pixel electrode is correspond in position to a periphery of the second pixel electrode next to the first pixel electrode.

17. The liquid crystal display as claimed in claim 14, further comprising a polarizer formed on the exterior of the second substrate.

18. The liquid crystal display as claimed in claim 14, wherein the width of the data line is about 3~10  $\mu\text{m}$ .

\* \* \* \* \*

专利名称(译)	用于具有高孔径比的液晶显示器的像素电极结构		
公开(公告)号	<a href="#">US20080211998A1</a>	公开(公告)日	2008-09-04
申请号	US12/120553	申请日	2008-05-14
[标]申请(专利权)人(译)	瀚宇彩晶股份有限公司		
申请(专利权)人(译)	瀚宇彩晶股份有限公司.		
当前申请(专利权)人(译)	瀚宇彩晶股份有限公司.		
[标]发明人	LIU HSIANG LUNG WU HSU HO		
发明人	LIU, HSIANG-LUNG WU, HSU-HO		
IPC分类号	G02F1/1343 G02F1/1335 G02F1/1362		
CPC分类号	G02F1/133512 G02F1/134336 G02F1/136209 G02F2201/40 G02F1/1396 G02F2201/122 G02F2201/123 G02F1/136286		
优先权	091112394 2002-06-07 TW		
其他公开文献	US7961264		
外部链接	<a href="#">Espacenet</a> <a href="#">USPTO</a>		

摘要(译)

用于具有高孔径比的液晶显示器的像素电极结构增加了孔径比并消除了Mura现象。任何两个相邻的像素电极彼此断开。每个像素电极包括与第一相邻数据线重叠以形成第一重叠部分的第一纵向外围，以及与第二相邻数据线重叠以形成第二重叠部分的第二纵向外围。第一纵向周边和第二纵向周边具有相同的三角波轮廓并且彼此对称。通过连接多个直角和等边三角形形成三角波轮廓。

