



US007623191B2

(12) **United States Patent**  
**Liao et al.**

(10) **Patent No.:** **US 7,623,191 B2**  
(45) **Date of Patent:** **Nov. 24, 2009**

(54) **LIQUID CRYSTAL DISPLAY DEVICES**

(75) Inventors: **Chia-Te Liao**, Kaohsiung (TW);  
**Shih-Min Chao**, Kaohsiung (TW);  
**Tean-Sen Jen**, Taoyuan Hsien (TW);  
**Yun-Bok Lee**, Tainan County (TW);  
**Chia-Hua Yu**, Taipei County (TW)

(73) Assignee: **Hannstar Display Corp.**, Tao-Yuan Hsien (TW)

(\*) Notice: Subject to any disclaimer, the term of this patent is extended or adjusted under 35 U.S.C. 154(b) by 346 days.

(21) Appl. No.: **11/532,982**

(22) Filed: **Sep. 19, 2006**

(65) **Prior Publication Data**

US 2008/0068549 A1 Mar. 20, 2008

(51) **Int. Cl.**  
**G02F 1/1333** (2006.01)  
**G02F 1/136** (2006.01)

(52) **U.S. Cl.** ..... **349/40; 349/47**

(58) **Field of Classification Search** ..... 341/40,  
341/47

See application file for complete search history.

(56) **References Cited**

U.S. PATENT DOCUMENTS

6,256,081	B1 *	7/2001	Lee et al.	349/141
6,600,542	B2 *	7/2003	Kim et al.	349/141
6,856,371	B2	2/2005	Kim et al.	
6,897,930	B2 *	5/2005	Nakayoshi et al.	349/139
7,006,189	B2 *	2/2006	Kim et al.	349/141
7,050,136	B2 *	5/2006	Lee et al.	349/141
7,227,609	B2 *	6/2007	Lee	349/146
7,262,826	B2 *	8/2007	Lee et al.	349/141
2002/0030782	A1 *	3/2002	Lee	349/143
2002/0041354	A1 *	4/2002	Noh et al.	349/141
2002/0057411	A1 *	5/2002	Kim et al.	349/141
2002/0159016	A1 *	10/2002	Nishida et al.	349/141

2002/0163604	A1 *	11/2002	Kim et al.	349/43
2003/0137615	A1 *	7/2003	Nakayoshi et al.	349/43
2004/0032384	A1 *	2/2004	Ohta et al.	345/87
2004/0090564	A1 *	5/2004	Lee	349/43
2004/0125304	A1 *	7/2004	Lee et al.	349/141
2004/0156005	A1 *	8/2004	Lee	349/141
2004/0178977	A1 *	9/2004	Nakayoshi et al.	345/87
2004/0257512	A1 *	12/2004	Yoo et al.	349/141
2004/0263755	A1 *	12/2004	Kim et al.	349/141
2005/0078262	A1 *	4/2005	Ono et al.	349/141
2005/0094063	A1 *	5/2005	Lee et al.	349/110
2005/0099570	A1 *	5/2005	Matsumoto et al.	349/141
2005/0117104	A1 *	6/2005	Nishida et al.	349/141
2005/0174521	A1 *	8/2005	Nishida et al.	349/141

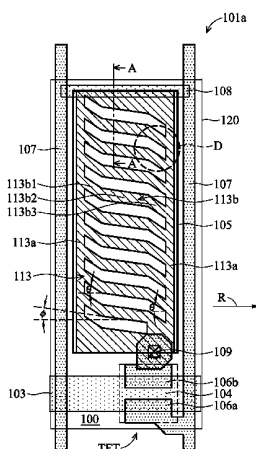
(Continued)

*Primary Examiner*—K. Cryrus Kianni  
(74) *Attorney, Agent, or Firm*—Thomas, Kayden, Horstemeyer & Risley

(57) **ABSTRACT**

Fringe field switching mode liquid crystal display (FFS LCD) devices are disclosed. A first substrate is disposed opposing a second substrate with a gap therebetween. A liquid crystal layer is interposed between the first and the second substrate. A gate line and data lines are formed on the first substrate in a matrix configuration and defining pixel areas. A counter electrode is disposed on each pixel area of the first substrate. A pixel electrode is disposed above the counter electrode with an insulating layer therebetween. The pixel electrode includes a plurality of parallel electrodes. Each electrode includes a first segment, a second segment, and a third segment, wherein the first segment has an included angle  $\theta$  from the horizontal direction, the second segment has an included angle  $\phi$  from the horizontal direction, and the first segment has an included angle  $\theta$  from the horizontal direction.

**8 Claims, 12 Drawing Sheets**



# US 7,623,191 B2

Page 2

---

## U.S. PATENT DOCUMENTS

2005/0190313	A1 *	9/2005	Wang .....	349/38	2007/0064187	A1 *	3/2007	Takeda et al. ....	349/127
2005/0190316	A1 *	9/2005	Takahashi et al. ....	349/44	2007/0121047	A1 *	5/2007	Chung et al. ....	349/141
2005/0280763	A1 *	12/2005	Kang et al. ....	349/141	2007/0153205	A1 *	7/2007	Jin et al. ....	349/141
2006/0044503	A1 *	3/2006	Ham et al. ....	349/141	2009/0009708	A1 *	1/2009	Higa et al. ....	349/155

\* cited by examiner

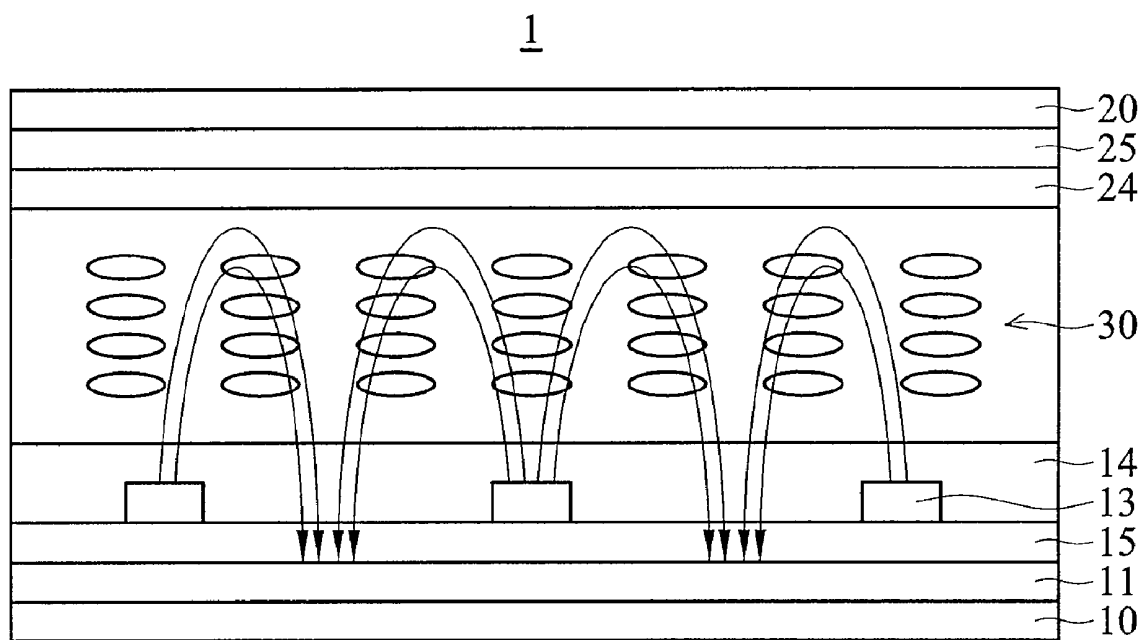


FIG. 1 (RELATED ART)

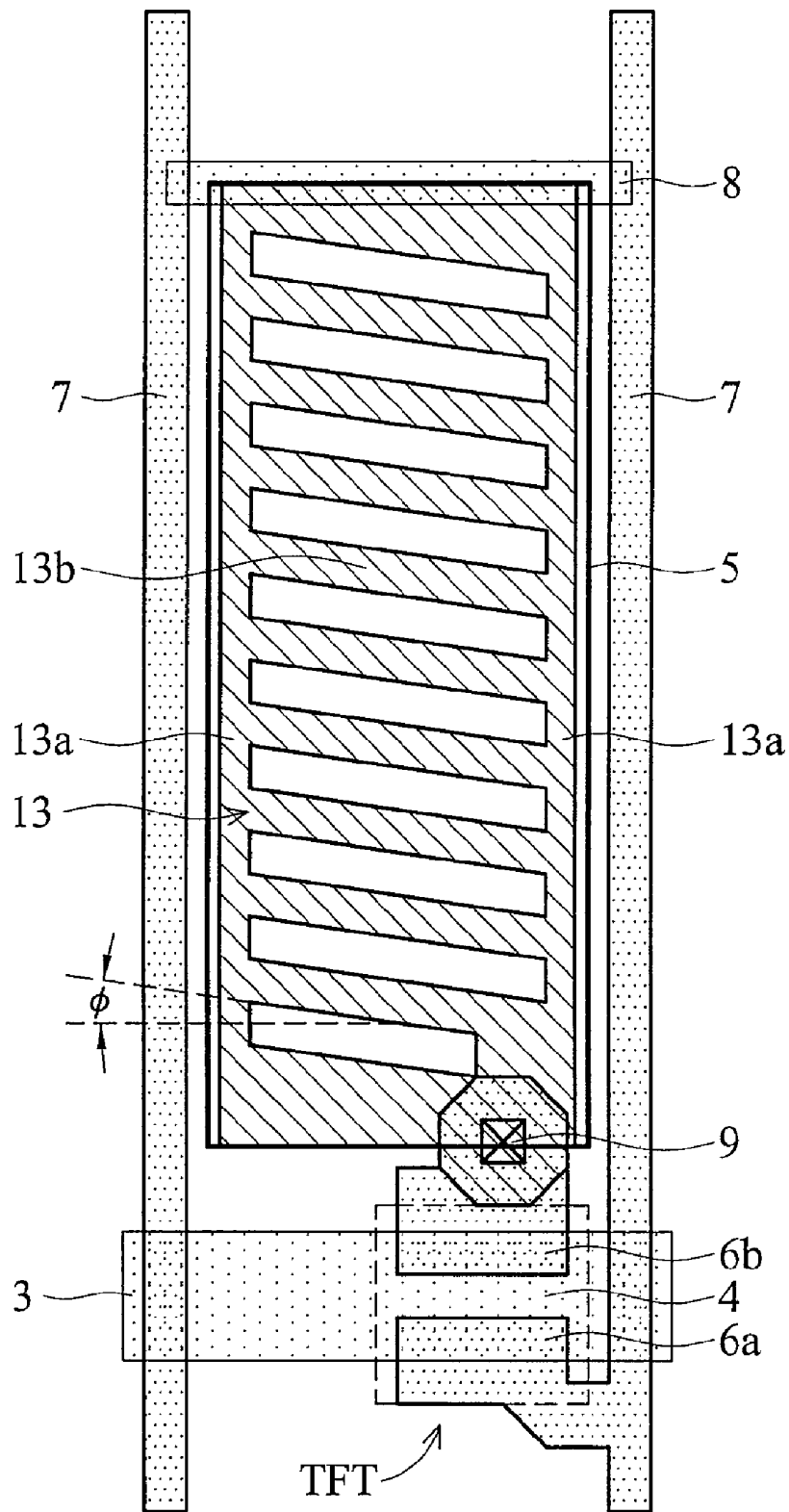


FIG. 2 (RELATED ART)

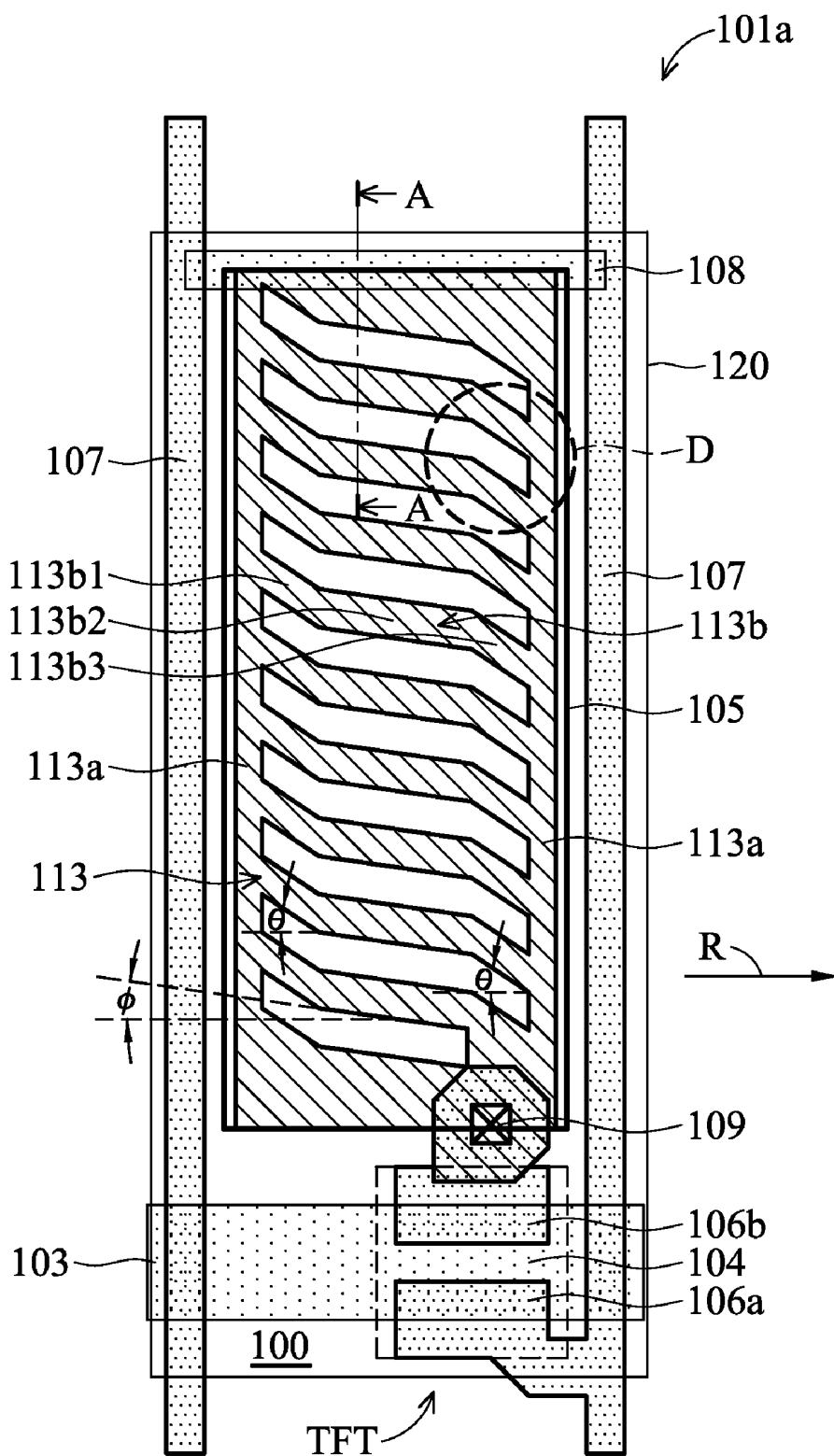


FIG. 3

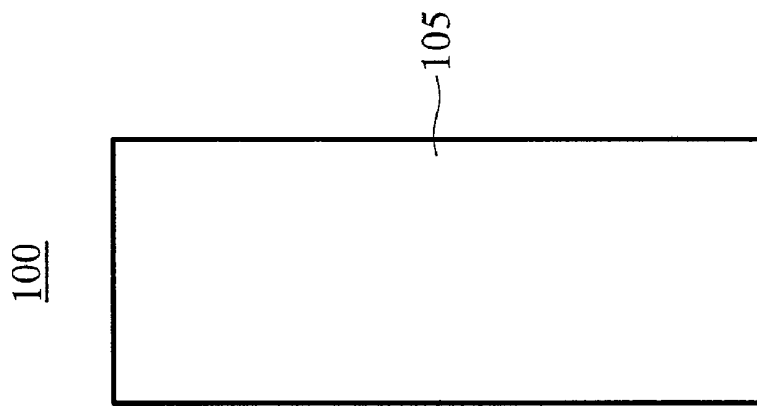


FIG. 4A

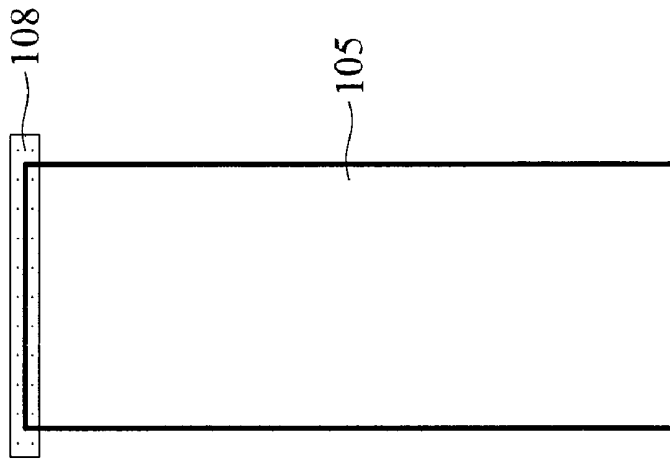


FIG. 4B

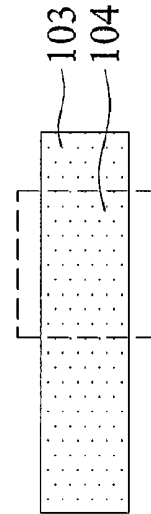
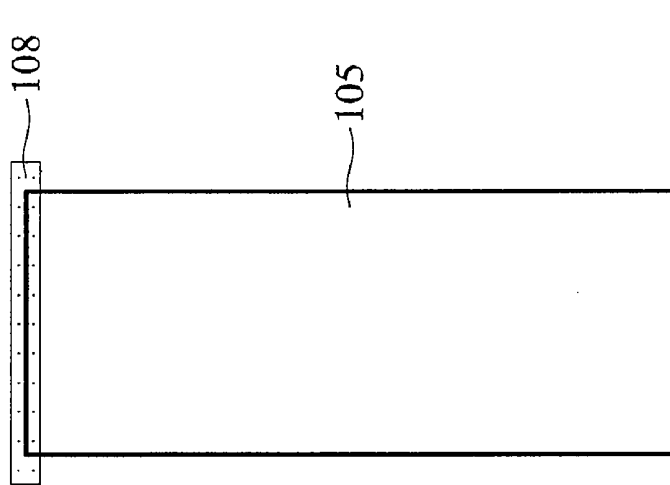


FIG. 4C

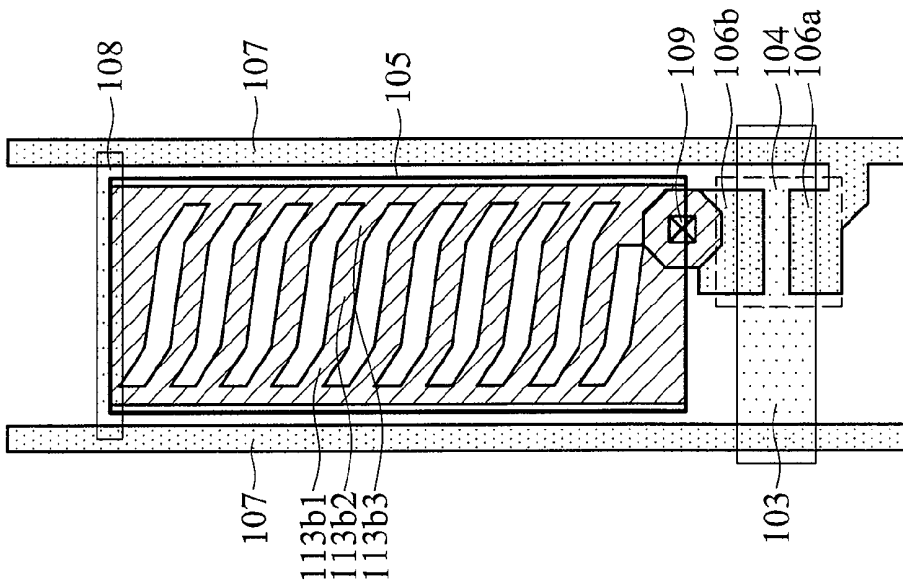


FIG. 4D

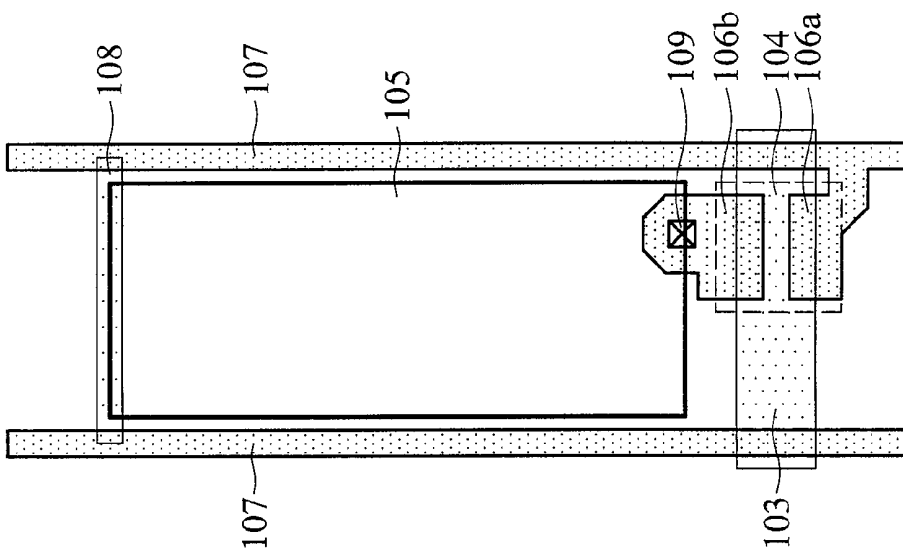


FIG. 4E

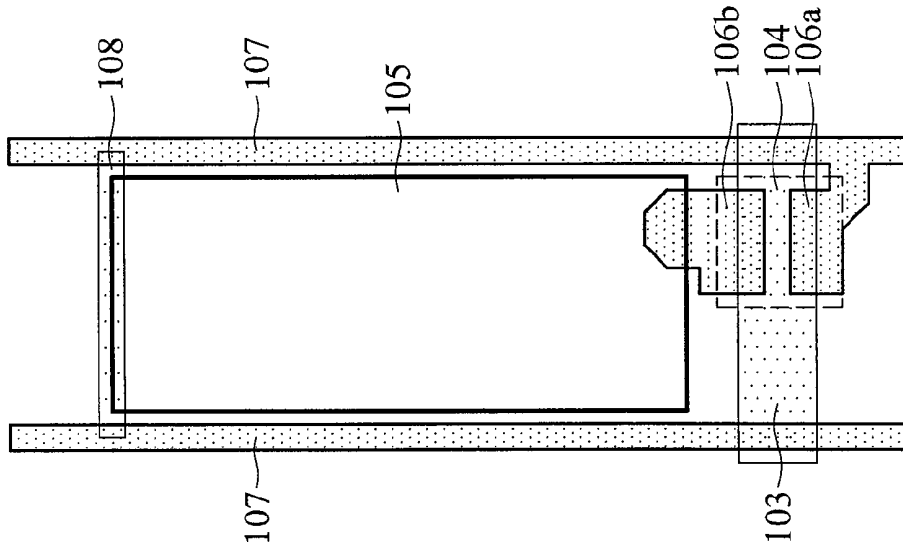


FIG. 4F

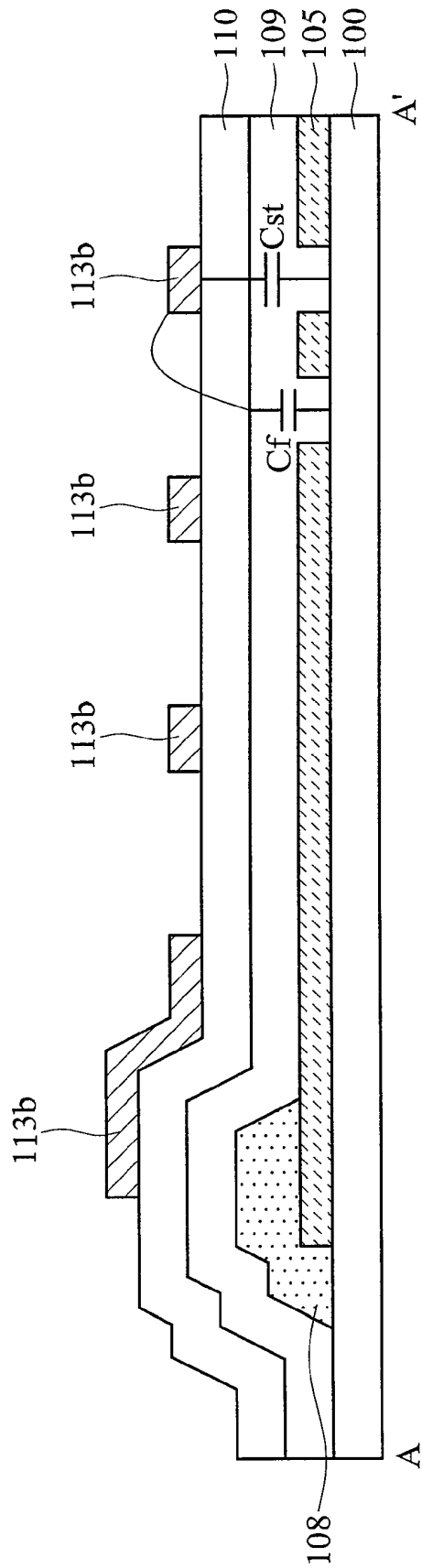


FIG. 5

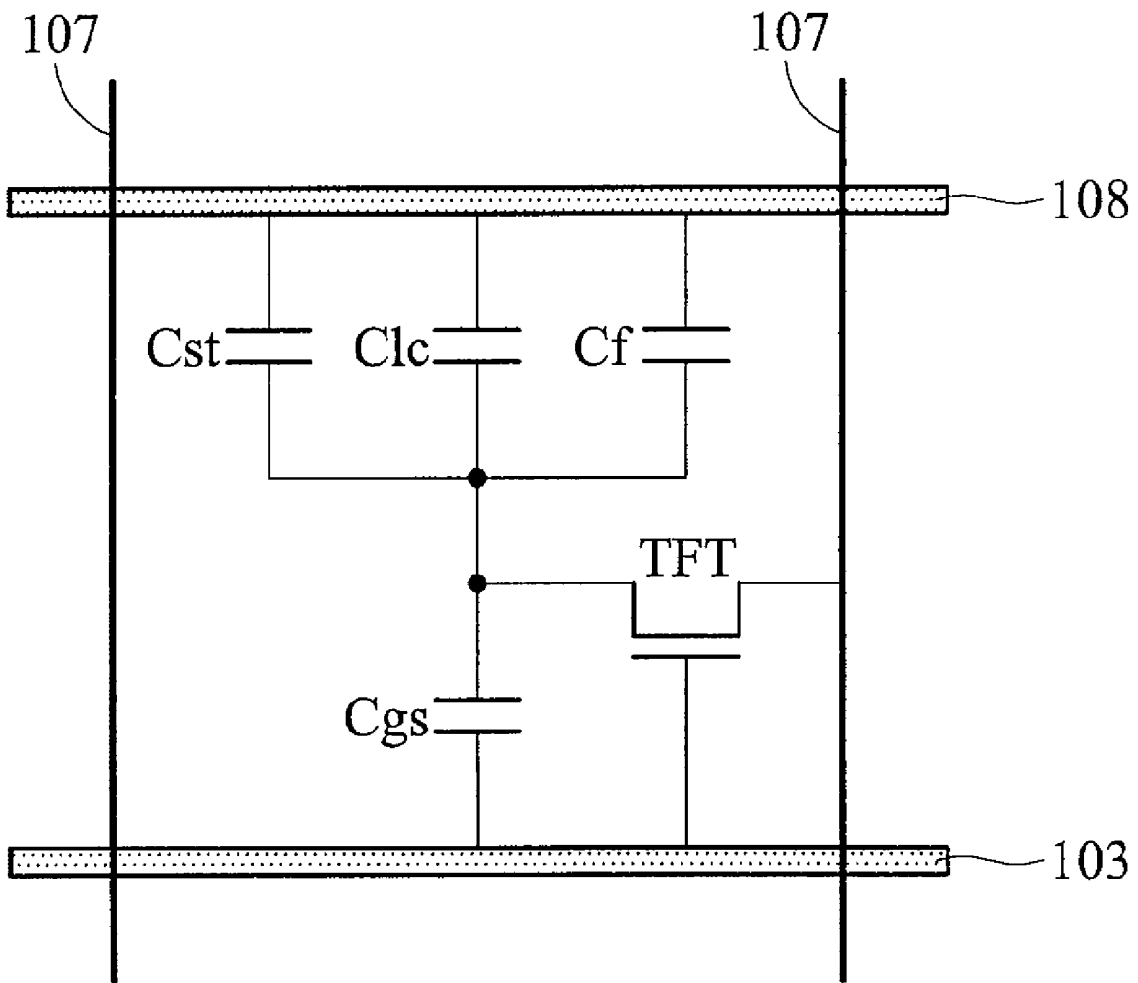


FIG. 6

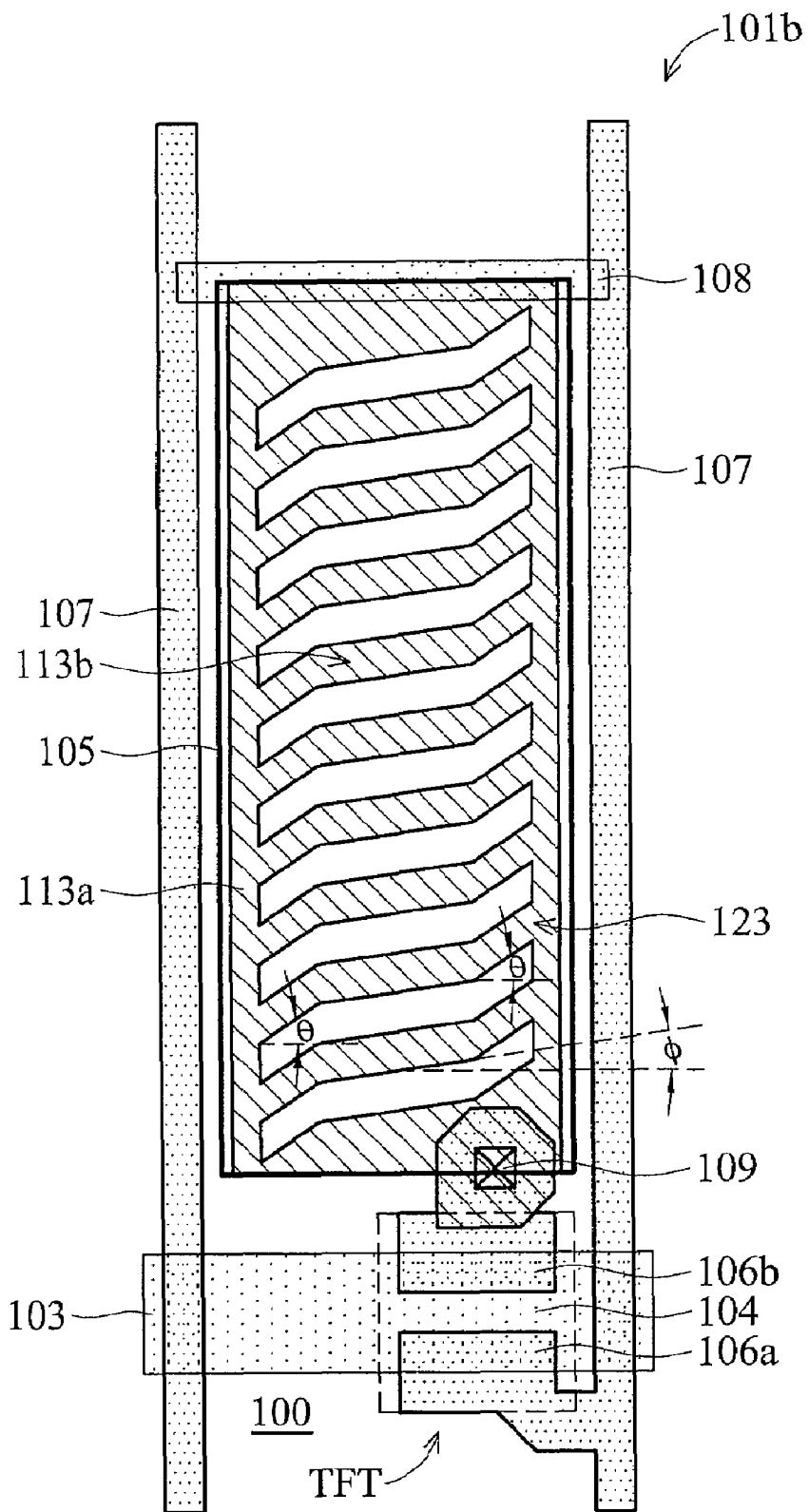


FIG. 7

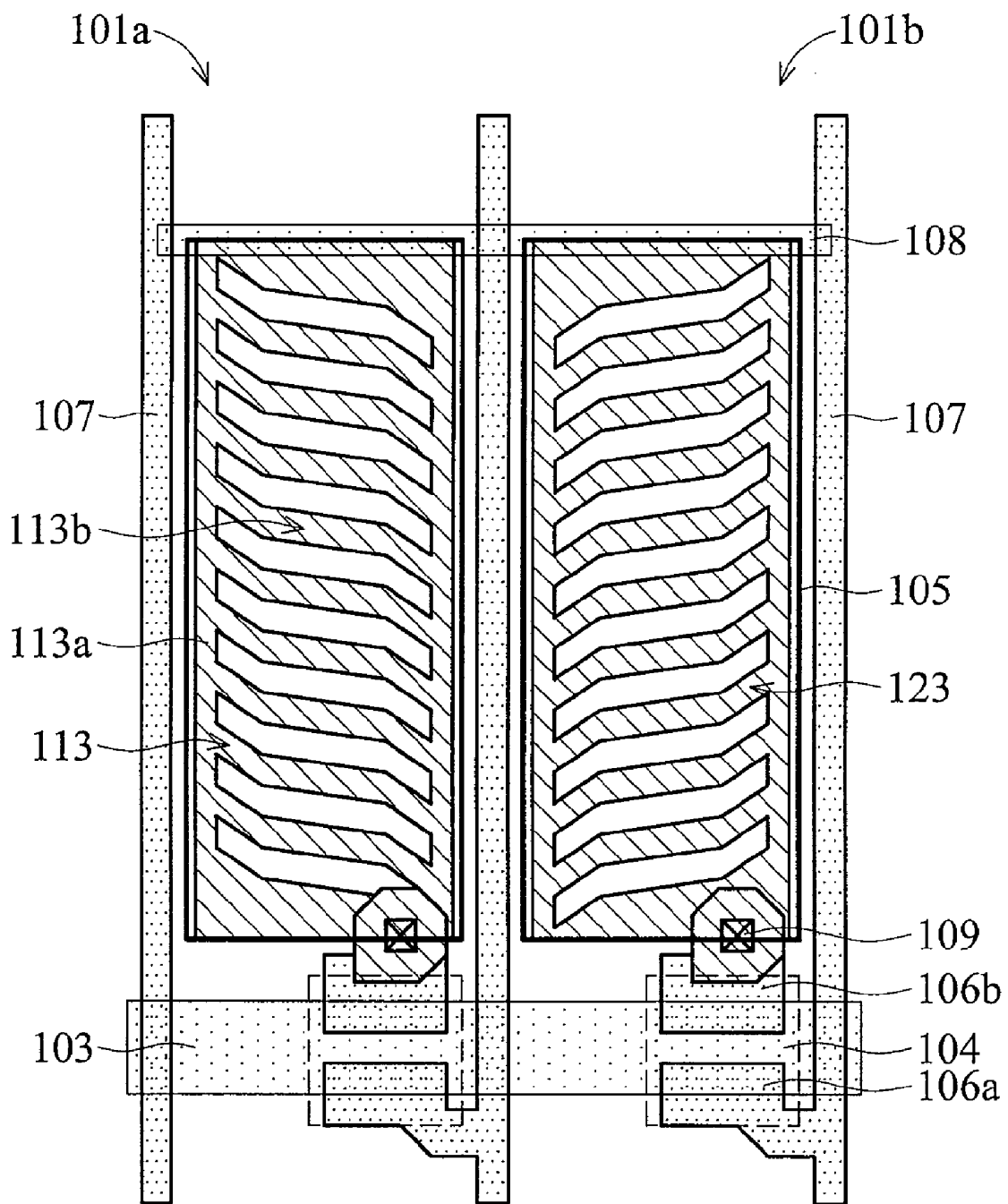


FIG. 8

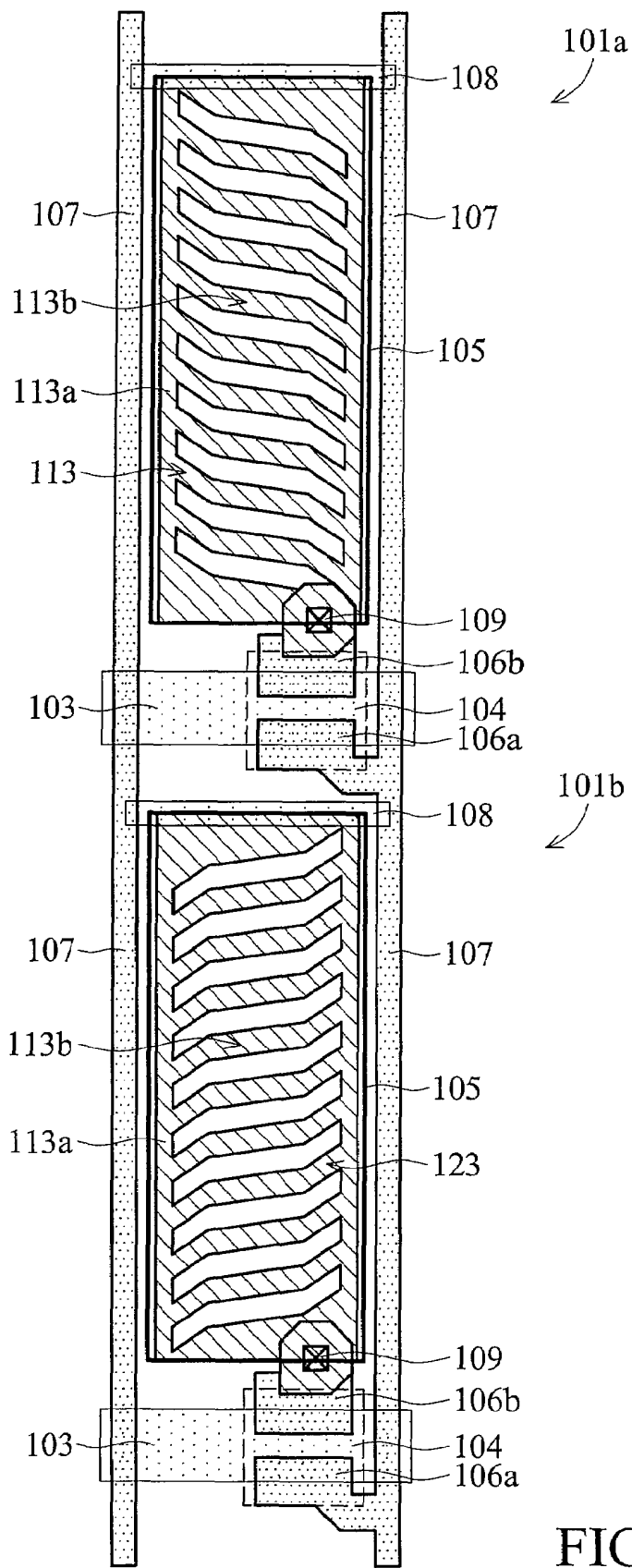


FIG. 9

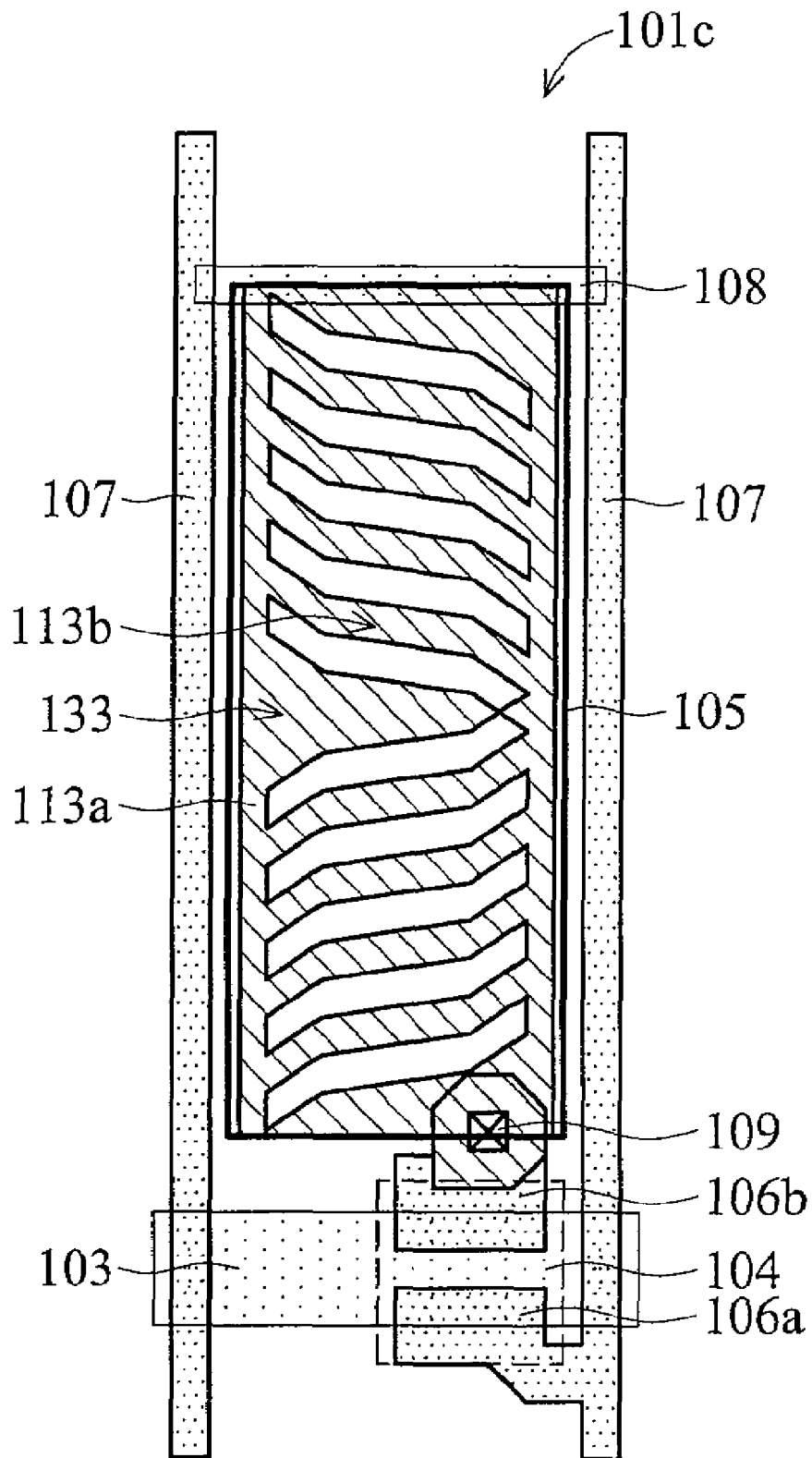


FIG. 10

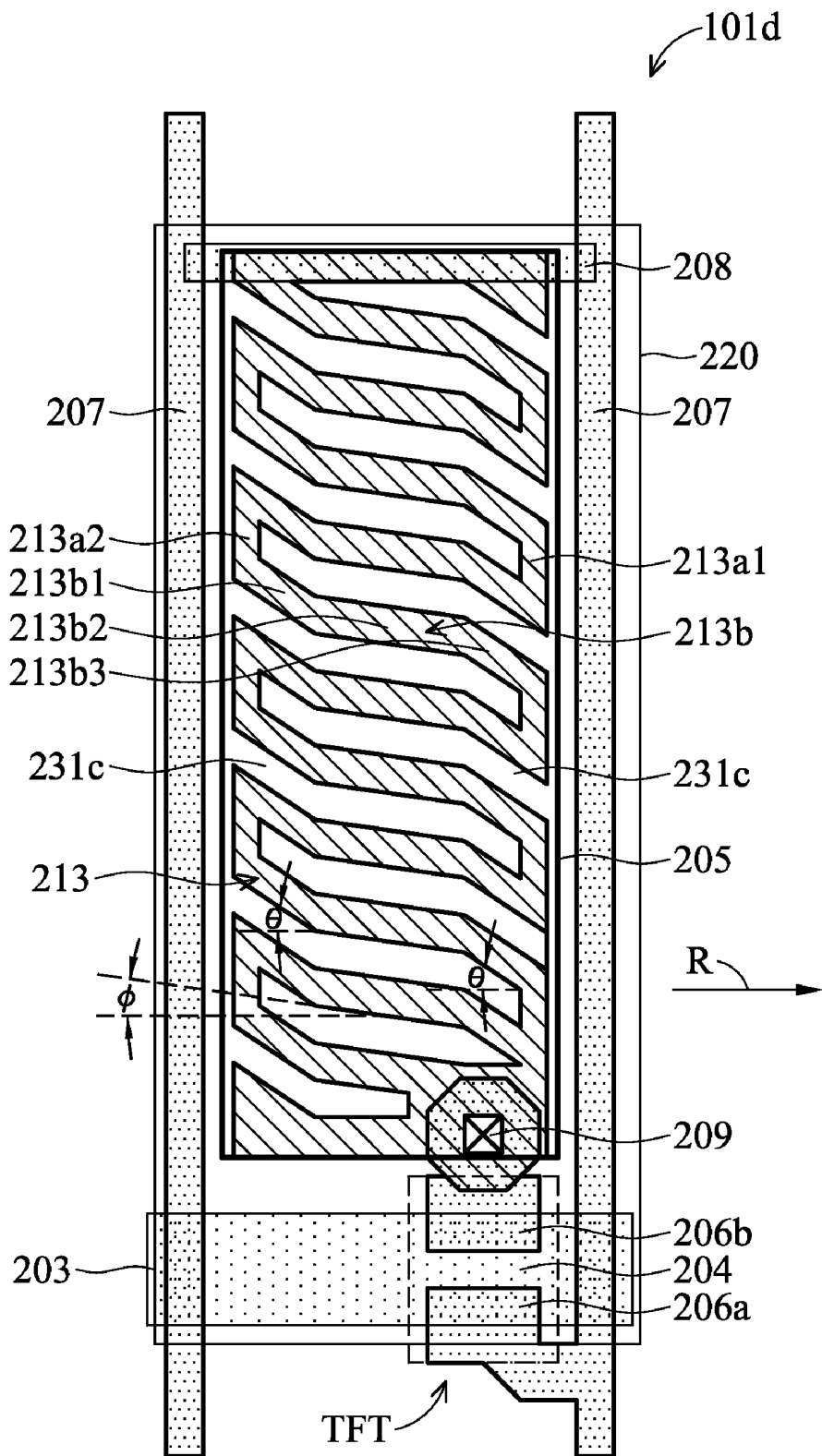


FIG. 11

## LIQUID CRYSTAL DISPLAY DEVICES

## BACKGROUND OF THE INVENTION

## 1. Field of the Invention

The invention relates to liquid crystal display (LCD) devices, and more particularly to fringe field switching mode liquid crystal display (FFS-LCD) devices.

## 2. Description of the Related Art

Liquid crystal display (LCD) devices possess the advantages of small size, light weight and low power consumption, thus increasing portability and applicability in a wide variety of electronic and communication devices including notebook computers, personal digital assistants (PDA), mobile phones and similar. Critical features for large-scale monitors and high-end TV applications, include fast response, high contrast ratio, high transparency, and wide viewing angle without gray scale inversion. In-plane switching (IPS) mode liquid crystal display devices meet the above-mentioned high quality display feature requirements, and solve the viewing angle problems by orienting the liquid crystal molecules to be parallel with a substrate.

Fringe field switching liquid crystal display (FFS-LCD) devices have pixel and counter electrodes comprise transparent conductors and a narrower distance between electrodes than the distance between the upper and lower substrates to form a fringe field on the electrodes. In operation, the fringe field on the electrodes forces the substantially homogeneous liquid crystal molecules to rotate transversely between the substrates in which a wide viewing angle is accomplished since the light is transmitted through the horizontally arranged liquid crystal molecules. Moreover, since the counter electrode and the pixel electrode comprise transparent conductive materials, the aperture ratio and the transmittance ratio of the display devices can thereby be improved.

U.S. Pat. No. 6,856,371, the entirety of which is hereby incorporated by reference, discloses electrode structures of a conventional FFS-LCD device. The electrode structures are symmetrical and render high image display quality and high transmittance ratio.

FIG. 1 is a cross section of a conventional fringe field switching liquid crystal display (FFS-LCD) device. An FFS-LCD 1 comprises a first substrate (an upper substrate) 10, a second substrate (a lower substrate) 20, and a liquid crystal layer 30 interposed between the first substrate 10 and the second substrate 20, serving as an LCD cell. A counter electrode 11 and a plurality of pixel electrodes 13 are disposed on the first substrate 10. An insulating layer 15 is disposed between the counter electrode 11 and the plurality of pixel electrodes 13. A lower alignment layer 14 is disposed on the insulating layer 15 and covers the pixel electrodes 15. A color filter layer 25 and an upper alignment layer 24 are disposed on the inner surface of the second substrate 20 and adjust the liquid crystal layer 30.

FIG. 2 is a plan view of the lower substrate structure of a conventional fringe field switching liquid crystal display (FFS-LCD) device. Two parallel gate lines 3 and two parallel data lines 7 are orthogonally intersected, enclosing a pixel area. A counter electrode 11 and pixel electrodes 13 are disposed in the pixel area. The pixel electrodes 15 comprise two electrode bras 13a parallel to the data lines 7 and a plurality of inclined electrodes 13b with an inclined angle  $\phi$ . The two ends of each electrode 13b are separately connected to the two electrode bras 13a. Note that the inclined angle  $\phi$  of the electrodes 13b directly affects the operating voltage of the

FFS-LCD device. More specifically, the greater the inclination of electrodes 13b, the higher the voltage required to operate the FFS-LCD device.

For small FFS-LCD panels, the inclined angle  $\phi$  of the electrodes 13b must be reduced to lower the operating voltage of the FFS-LCD device. A low inclined angle  $\phi$  of electrodes 13b (e.g., less than  $7^\circ$ ) can cause the disclination effect deteriorating display image quality. Conversely, high inclined angle  $\phi$  of the electrodes 13b requires a high driving voltage such that the physical area of the thin film transistor (TFT) must be increased to provide adequate charge storage capability. The TFT structure comprises a gate electrode 3, a channel and source/drain regions 4, and source contact 6a and drain contact 6b. The drain contact 6b connects the pixel electrodes 13 via a contact plug 9. When the physical area of the thin film transistor (TFT) increases, however, the area of the pixel electrodes 13 must be reduced, thus, a small aperture ratio and a low transmittance ratio occur.

Thus, low operating voltage FFS-LCD devices with improved aperture and transmittance ratios, capable of preventing the disclination effect are desirable.

## BRIEF SUMMARY OF THE INVENTION

A detailed description is given in the following embodiments with reference to the accompanying drawings.

The invention is directed to electrode structures of an FFS-LCD device. The electrode structures comprise multiple deflected electrodes thereby providing an FFS-LCD device having low operating voltage, preventing the disclination effect and improving aperture and transmittance ratios.

Liquid crystal display devices are provided. An exemplary embodiment of a liquid crystal display device comprises oppositely disposed first and second substrates with a predetermined gap therebetween. A liquid crystal layer is interposed between the first and the second substrates. A gate line and a data line are disposed on the first substrate in a matrix configuration and defining pixel areas. A counter electrode is disposed on each pixel area of the first substrate. A first pixel electrode is disposed on the counter electrode with at least one insulating layer therebetween. The first pixel electrode comprises a plurality of parallel electrodes, and each electrode comprises a first segment, a second segment, and a third segment; the first segment includes an angle of  $\theta$  from the horizontal, the second segment includes an angle of  $\phi$  from the horizontal, and the third segment includes an angle of  $\theta$  from the horizontal, and wherein the angle of  $\theta$  is greater than the angle of  $\phi$ .

Note that the liquid crystal display device further comprises a second pixel electrode disposed on the counter electrode with at least one insulating layer therebetween. The second pixel electrode comprises a plurality of parallel electrodes, and each electrode comprises a sixth segment, a seventh segment, and an eighth segment. The sixth segment includes an angle of  $-\theta$  from the horizontal. The seventh segment includes an angle of  $-\phi$  from the horizontal. The eighth segment includes an angle of  $-\theta$  from the horizontal, and the angle of  $-\theta$  is greater than the angle of  $-\phi$ .

Another exemplary embodiment of a liquid crystal display device comprises: oppositely disposed first and second substrates with a predetermined gap therebetween; a liquid crystal layer interposed between the first and the second substrates; a gate line and a data line disposed on the first substrate in a matrix configuration and defining pixel areas; a counter electrode disposed on each pixel area of the first substrate; a pixel electrode disposed on the counter electrode with at least one insulating layer therebetween; wherein the

pixel electrode comprises a plurality of parallel electrodes, and each electrode comprises a first segment, a second segment, and a third segment; wherein the first segment includes an angle of  $\theta$  from the horizontal, the second segment includes an angle of  $\phi$  from the horizontal, and the third segment includes an angle of  $\theta$  from the horizontal, wherein the angle of  $\theta$  is greater than the angle of  $\phi$ ; the pixel electrode further comprises a fourth segment connecting the first segment of the odd electrodes and the third segment of the even electrodes, and fifth segment connecting the third segment of the odd electrodes and the first segment of the even electrodes.

Some embodiments of a liquid crystal display device comprise: oppositely disposed first second substrates with a predetermined gap therebetween; a liquid crystal layer interposed between the first and the second substrates; a gate line and a data line disposed on the first substrate in a matrix configuration and defining pixel areas; a counter electrode disposed on each pixel area of the first substrate; a pixel electrode disposed on the counter electrode with at least one insulating layer therebetween; wherein the pixel electrode with a first portion comprising a plurality of parallel electrodes, and each electrode comprises a first segment, a second segment, and a third segment; wherein the first segment includes an angle of  $\theta$  from the horizontal, the second segment includes an angle of  $\phi$  from the horizontal, and the third segment includes an angle of  $\theta$  from the horizontal, and wherein the angle of  $\theta$  is greater than the angle of  $\phi$ ; wherein the pixel electrode with a second portion comprising a plurality of parallel electrodes, and each electrode comprises a sixth segment, a seventh segment, and an eighth segment; wherein the sixth segment includes an angle of  $-\theta$  from the horizontal, the seventh segment includes an angle of  $-\phi$  from the horizontal, and the eighth segment includes an angle of  $-\theta$  from the horizontal, and wherein the angle of  $-\theta$  is greater than the angle of  $-\phi$ .

#### BRIEF DESCRIPTION OF THE DRAWINGS

The invention can be more fully understood by reading the subsequent detailed description and examples with references made to the accompanying drawings, wherein:

FIG. 1 is a cross section of a conventional fringe field switching liquid crystal display (FFS-LCD) device;

FIG. 2 is a plan view of the lower substrate structure of a conventional fringe field switching liquid crystal display (FFS-LCD) device;

FIG. 3 is a plan view of an electrode structure in each pixel area of an FFS-LCD device according to a first embodiment of the invention;

FIGS. 4A-4F are cross sections of the steps of fabricating the electrode structure of an FFS-LCD device according to a first embodiment of the invention;

FIG. 5 is a cross section of the electrode structure in each pixel area of an FFS-LCD device taken along the line A-A' of FIG. 3;

FIG. 6 is an equivalent circuit of the electrode structure in each pixel area of an FFS-LCD device of FIGS. 3 and 5;

FIG. 7 is a plan view of a variation of the electrode structure in each pixel area of an FFS-LCD device according to a first embodiment of the invention;

FIG. 8 is a plan view of another variation of the electrode structure in each pixel area of an FFS-LCD device according to a first embodiment of the invention;

FIG. 9 is a plan view of another variation of the electrode structure in each pixel area of an FFS-LCD device according to a first embodiment of the invention;

FIG. 10 is a plan view of an electrode structure in each pixel area of an FFS-LCD device according to a second embodiment of the invention; and

FIG. 11 is a plan view of an electrode structure in each pixel area of an FFS-LCD device according to a third embodiment of the invention.

#### DETAILED DESCRIPTION OF THE INVENTION

The following description is of the best-contemplated mode of carrying out the invention. This description is made for the purpose of illustrating the general principles of the invention and should not be taken in a limiting sense. The scope of the invention is best determined by reference to the appended claims.

FFS-LCD devices comprising electrode structures with multiple deflected electrodes are provided. The provided FFS-LCD devices have low operating voltage, thus, the disclination effect is prevented and the aperture ratio and transmittance ratio are improved.

#### First Embodiment

FIG. 3 is a plan view of an electrode structure in each pixel area of an FFS-LCD device according to a first embodiment of the invention. In the active matrix array substrate **101a** of FIG. 3, a unit electrode structure comprises a plurality of orthogonally intersecting gate lines **103** and data lines **107** disposed on a substrate **100**. A plurality of pixel areas are defined by two adjacent gate lines **103** and data lines **107**. A counter electrode **105** is disposed on the substrate **100** and in each pixel area. A first pixel electrode **113** is disposed on the counter electrode **105** with at least one insulating layer (referring to the first insulating layer **109** and the second insulating layer **110** of FIG. 5) therebetween, wherein the first pixel electrode **113** comprises two electrode bars **113a** parallel to the data lines **107** and a plurality of parallel electrodes **113b**. Each electrode **113b** comprises a first segment **113b1**, a second segment **113b2**, and a third segment **113b3**. The first segment **113b1** includes an angle of  $\theta$  from the horizontal. The second segment **113b2** includes an angle of  $\phi$  from the horizontal. The third segment **113b3** includes an angle of  $\theta$  from the horizontal. The angle of  $\theta$  is greater than the angle of  $\phi$ . For example, the angle of  $\theta$  is approximately in a range between  $1^\circ$  and  $80^\circ$  and the angle of  $\phi$  is approximately in a range between  $0^\circ$  and  $79^\circ$ . Since in the region D neighboring the electrode bar **113a**, the angle of  $\theta$  of the third segment **113b3** deviating from the horizontal is greater than the angle of  $\phi$ , the disclination effect can thus be prevented.

FIG. 3 shows a TFT device disposed at the intersection of each gate line **103** and data line **107** electrically coupled to the first pixel electrode **113**. The TFT device comprises a gate electrode **103**, a channel and source/drain regions **104**, and source contact **106a** and drain contact **106b**. The drain contact **106b** connects the first pixel electrodes **113** via a contact plug **109**. By deflecting the angle of  $\theta$  of the third segment **113b3** greater than the angle of  $\phi$ , the physical area of TFT device can be reduced, and the area of the first pixel electrodes **113** can nonetheless be increased resulting in improved high aperture ratio and high transmittance ratio.

Note that an alignment layer **120** which is horizontally rubbed (indicated as rubbing direction R) is optionally formed on the pixel electrode **113** of the substrate structure **101a**.

FIGS. 4A-4F are cross sections of the steps of fabricating the electrode structure of an FFS-LCD device according to a first embodiment of the invention. Referring to FIG. 4A, a

substrate **100** such a transparent glass substrate or a plastic substrate is provided. A patterned counter electrode is formed on the substrate **100**. Referring to FIG. 4B, a patterned first metal layer including gate lines **103** and common electrode lines **108** is formed on the substrate **100**, wherein the common electrode lines **108** and the counter electrode **105** are operatively electrically connected. The gate lines **103** and common electrode line **108** are parallel and made from metal materials such as aluminum (Al), molybdenum (Mo), or other conductive materials. A gate insulating layer **109** is subsequently formed on the substrate **100** and covering the counter electrode **105**, gate lines **107**, and the common electrode lines **108**.

Referring to FIG. 4C, a patterned semiconductor layer is formed covering part of the gate lines **103**. For example, a semiconductor island **104** including an amorphous silicon island or polysilicon island is formed part of the gate line **103** to serve as a carrier channel region. A source region and a drain region are separately formed on both sides of the carrier channel region. Referring to FIG. 4D, a patterned second metal layer is formed on the substrate **100**. The patterned second metal layer comprises data lines **107**, source contact **106a** and drain contact **106b**. The second metal layer is preferably comprises metal materials such as aluminum (Al), molybdenum (Mo), or other conductive materials. A second insulating layer **110** (referring to FIG. 5) is deposited and patterned creating a contact plug **109** on the drain contact **106b**.

Referring to FIG. 4C, a patterned semiconductor layer is formed covering part of the gate lines **103**. For example, a semiconductor island **104** including an amorphous silicon island or polysilicon island is formed part of the gate line **103** to serve as a carrier channel region. A source region and a drain region are separately formed on both sides of the carrier channel region. Referring to FIG. 4D, a patterned second metal layer is formed on the substrate **100**. The patterned second metal layer comprises data lines **107**, source contact **106a** and drain contact **106b**. The second metal layer is preferably comprises metal materials such as aluminum (Al), molybdenum (Mo), or other conductive materials. A second insulating layer **110** (referring to FIG. 5) is deposited and patterned creating a contact plug **109** on the drain contact **106b**.

FIG. 5 is a cross section of the electrode structure in each pixel area of an FFS-LCD device taken along the line A-A' of FIG. 3. FIG. 6 is an equivalent circuit of the electrode structure in each pixel area of an FFS-LCD device of FIG. 3 and FIG. 5. Referring to FIG. 5, a storage capacitor  $C_{st}$  and a fringe capacitor  $C_f$  are induced between the electrode **131b** of the pixel electrode structure **131** and the counter electrode **105**. The capacitances of the storage capacitor  $C_{st}$  and the fringe capacitor  $C_f$  are increased as the overlying area between the electrode **131b** of the pixel electrode structure **131** and the counter electrode **105**. The larger overlying area between the electrode **131b** of the pixel electrode structure **131** and the counter electrode **105** is, the larger the TFT devices are required to be to provide adequate charge storage capacity. When the physical area of the thin film transistor (TFT) device increases, however, the aperture ratio and low transmittance ratio of the FFS-LCD device are decreased. By deflecting the angle of  $\theta$  greater than the angle of  $\phi$ , the physical area of TFT device can be reduced by improving the aperture ratio and high transmittance ratio.

FIG. 7 is a plan view of a variation of the electrode structure in each pixel area of an FFS-LCD device according to a first embodiment of the invention. In the active matrix array substrate **101b** of FIG. 7, the electrode structure in each pixel area

is nearly identical to the electrode structure in each pixel area of the first embodiment in FIG. 3 and for simplicity its detailed description is omitted. The electrode structure in each pixel area in FIG. 7 is different from the electrode structure in each pixel area in FIG. 3 in that a second pixel electrode **123** comprises a plurality of electrodes **113b**. Each electrode **113b** comprises a first segment, a second segment, and a third segment. The first segment includes an angle of  $-\theta$  from the horizontal. The second segment includes an angle of  $-\phi$  from the horizontal. The third segment includes an angle of  $-\theta$  from the horizontal. The angle of  $-\theta$  is greater than the angle of  $-\phi$ .

FIG. 8 is a plan view of another variation of the electrode structure in each pixel area of an FFS-LCD device according to a first embodiment of the invention. In FIG. 8, the first pixel electrode **113** and the second pixel electrode **123** are mirror symmetrical horizontally.

FIG. 9 is a plan view of another variation of the electrode structure in each pixel area of an FFS-LCD device according to a first embodiment of the invention. In FIG. 9, the first pixel electrode **113** and the second pixel electrode **123** are vertically and symmetrically mirrored.

#### Second Embodiment

FIG. 10 is a plan view of an electrode structure in each pixel area of an FFS-LCD device according to a second embodiment of the invention. Referring to FIG. 10, in order to improve the aperture ratio and transmittance ratio of the FFS-LCD device, the active matrix array substrate **101c** of the second embodiment of the invention comprises a plurality of orthogonally intersecting gate lines **103** and data lines **107** disposed on a substrate **100**. A plurality of pixel areas are defined by two adjacent gate lines **103** and data lines **107**. A counter electrode **105** is disposed on the substrate **100** and in each pixel area. A pixel electrode **133** is disposed on the counter electrode **105** with at least one insulating layer therebetween. The pixel electrode **133** comprises an upper portion which comprises a plurality of parallel electrodes. Each electrode comprises a first segment, a second segment, and a third segment. The first segment includes an angle of  $\theta$  from the horizontal. The second segment includes an angle of  $\phi$  from the horizontal. The third segment includes an angle of  $\theta$  from the horizontal. The angle of  $\theta$  is greater than the angle of  $\phi$ . The pixel electrode **133** further comprises a lower portion which comprises a plurality of parallel electrodes. Each electrode comprises a sixth segment, a seventh segment, and an eighth segment. The sixth segment includes an angle of  $-\theta$  from the horizontal. The seventh segment includes an angle of  $-\phi$  from the horizontal. The eighth segment includes an angle of  $-\theta$  from the horizontal. The angle of  $-\theta$  is greater than the angle of  $-\phi$ . Note that the first portion of the pixel electrode and the second portion of the pixel electrode are vertically and symmetrically mirrored.

#### Third Embodiment

FIG. 11 is a plan view of an electrode structure in each pixel area of an FFS-LCD device according to a third embodiment of the invention. Referring to FIG. 11, in order to improve the aperture ratio and transmittance ratio of the FFS-LCD device, the active matrix array substrate **101d** of the third embodiment of the invention comprises a plurality of orthogonally intersecting gate lines **203** data lines **207** disposed on a substrate **200**. A plurality of pixel areas are defined by two adjacent gate lines **203** and data lines **207**. A counter electrode **205** is disposed on the substrate **200** and in each pixel area. A pixel

electrode **213** is disposed on the counter electrode **205** with at least one insulating layer therebetween. The pixel electrode **213** comprises a plurality of parallel electrodes **213b**. Each electrode **213b** comprises a first segment **213b1**, a second segment **213b2**, and a third segment **213b3**. The first segment **213b1** includes an angle of  $\theta$  from the horizontal. The second segment **213b2** includes an angle of  $\phi$  from the horizontal. The third segment **213b3** includes an angle of  $\theta$  from the horizontal. The angle of  $\theta$  is greater than the angle of  $\phi$ . The pixel electrode **213** further comprises a fourth segment **213a1** connecting the third segment **213b3** of the odd electrodes and the third segment **213b3** of the even electrodes, and fifth segment **213a2** connecting the first segment **213b1** of the odd electrodes and the first segment **213b1** of the even electrodes. More specifically, the pixel electrode **213** is an S-shaped continuous zigzag line or an inverted S-shaped continuous zigzag line. Preferably the angle of  $\theta$  is approximately in a range between  $1^\circ$  and  $80^\circ$  and the angle of  $\phi$  is approximately in a range between  $0^\circ$  and  $79^\circ$ . Since in the region D neighboring the electrode bar **113a**, the angle of  $\theta$  of the third segment **113b3** deviated from the horizontal is greater than the angle of  $\phi$ , the disclination effect can thus be prevented.

Furthermore, since a first opening **213c** is formed between each adjacent fourth segments **213a1** and a second opening **213c** between each adjacent fifth segments **213a2** of the pixel electrode **213** to increase aperture ratio and transmittance ratio of the FFS-LCD device. Preferably the width of the first and the second openings **213c** is about  $0.1\ \mu\text{m}$  to  $10\ \mu\text{m}$ .

Referring to FIG. 11, a TFT device is disposed at the intersection of each gate line **203** and data line **207** and electrically coupled to the pixel electrode **213**. The TFT device comprises a gate electrode **203**, a channel and source/drain regions **204**, and source contact **206a** and drain contact **206b**. The drain contact **206b** connects the pixel electrodes **213** via a contact plug **209**. By deflecting the angle of  $\theta$  of the third segment **213b3** greater than the angle of  $\phi$ , the physical area of TFT device can be reduced, and the area of the pixel electrodes **213** can nonetheless be increased resulting in improved high aperture ratio and high transmittance ratio.

Note that an alignment layer **220** which is horizontally rubbed (indicated as rubbing direction R) is optionally formed on the pixel electrode **213** of the substrate structure **101d**.

While the invention has been described by way of example and in terms of the preferred embodiments, it is to be understood that the invention is not limited to the disclosed embodiments. To the contrary, it is intended to cover various modifications and similar arrangements (as would be apparent to those skilled in the art). Therefore, the scope of the appended claims should be accorded the broadest interpretation so as to encompass all such modifications and similar arrangements.

What is claimed is:

1. A liquid crystal display device, comprising:
  - a first substrate and a second substrate opposing each other with a predetermined gap therebetween;
  - a liquid crystal layer interposed between the first and the second substrates;
  - a gate line and a data line disposed on the first substrate in a matrix configuration and defining pixel areas;
  - a counter electrode disposed on each pixel area of the first substrate;
  - a pixel electrode disposed on the counter electrode with at least one insulating layer therebetween;
  - a first opening between each adjacent fourth segments and a second opening between each adjacent fifth segments whereby increasing aperture ratio and transmittance ratio of the liquid crystal display device;
  - wherein the pixel electrode comprises a plurality of parallel electrodes, and each parallel electrode comprises a first segment, a second segment, and a third segment;
  - wherein the first segment includes an angle of  $\theta$  from the horizontal, the second segment includes an angle of  $\phi$  from the horizontal, and the third segment includes an angle of  $\theta$  from the horizontal, and wherein the angle of  $\theta$  is greater than the angle of  $\phi$ ; and
  - wherein the pixel electrode further comprises a fourth segment connecting the third segment of the odd electrodes and the third segment of the even electrodes, and fifth segment connecting the first segment of the odd electrodes and the first segment of the even electrodes.
2. The liquid crystal display device as claimed in claim 1, further comprising a thin film transistor disposed at an intersection of each gate line and data line and electrically coupled to the first pixel electrode.
3. The liquid crystal display device as claimed in claim 1, wherein the width of the first and the second openings is about  $0.1\ \mu\text{m}$  to  $10\ \mu\text{m}$ .
4. The liquid crystal display device as claimed in claim 1, wherein the angle of  $\theta$  is in an approximate range of between  $1^\circ$  and  $80^\circ$ .
5. The liquid crystal display device as claimed in claim 1, wherein the angle of  $\phi$  is in an approximate range of between  $0^\circ$  and  $79^\circ$ .
6. The liquid crystal display device as claimed in claim 1, further comprising a common electrode line parallel to the gate line and connecting the counter electrode of each pixel area.
7. The liquid crystal display device as claimed in claim 1, further comprising an alignment layer disposed on the first pixel electrode of the first substrate and rubbed horizontally.
8. The liquid crystal display device as claimed in claim 1, wherein the fourth segment and the fifth segment are parallel to each gate line.

\* \* \* \* \*

专利名称(译)	液晶显示装置		
公开(公告)号	<a href="#">US7623191</a>	公开(公告)日	2009-11-24
申请号	US11/532982	申请日	2006-09-19
[标]申请(专利权)人(译)	瀚宇彩晶股份有限公司		
申请(专利权)人(译)	瀚宇彩晶股份有限公司.		
当前申请(专利权)人(译)	瀚宇彩晶股份有限公司		
[标]发明人	LIAO CHIA TE CHAO SHIH MIN JEN TEAN SEN LEE YUN BOK YU CHIA HUA		
发明人	LIAO, CHIA-TE CHAO, SHIH-MIN JEN, TEAN-SEN LEE, YUN-BOK YU, CHIA-HUA		
IPC分类号	G02F1/1333 G02F1/136		
CPC分类号	G02F1/134363 G02F2001/134372		
其他公开文献	US20080068549A1		
外部链接	<a href="#">Espacenet</a> <a href="#">USPTO</a>		

摘要(译)

公开了边缘场切换模式液晶显示器 ( FFS LCD ) 装置。第一基板与第二基板相对设置，其间具有间隙。液晶层介于第一和第二基板之间。栅极线和数据线以矩阵配置形成在第一基板上并限定像素区域。对电极设置在第一基板的每个像素区域上。像素电极设置在对电极上方，其间具有绝缘层。像素电极包括多个平行电极。每个电极包括第一区段，第二区段和第三区段，其中第一区段具有从水平方向的夹角 $\theta$ ，第二区段具有从水平方向的夹角 $\phi$ ，并且第一区段具有包括的角度 $\theta$ 从水平方向。

