



US007248316B2

(12) **United States Patent**
Park

(10) **Patent No.:** **US 7,248,316 B2**
(45) **Date of Patent:** **Jul. 24, 2007**

(54) **TRANSFLECTIVE LIQUID CRYSTAL DISPLAY DEVICE**

(56) **References Cited**

(75) Inventor: **Jae-Deok Park**, Gyeongsangbuk-do (KR)

U.S. PATENT DOCUMENTS

6,522,377 B2 * 2/2003 Kim et al. 349/114
6,919,945 B2 * 7/2005 Ha 349/114

(73) Assignee: **LG. Philips LCD Co., Ltd.**, Seoul (KR)

* cited by examiner

(*) Notice: Subject to any disclaimer, the term of this patent is extended or adjusted under 35 U.S.C. 154(b) by 0 days.

Primary Examiner—Dung T. Nguyen
(74) *Attorney, Agent, or Firm*—Brinks Hofer Gilson & Lione

(21) Appl. No.: **10/813,797**

(57) **ABSTRACT**

(22) Filed: **Mar. 30, 2004**

A transflective liquid crystal display device includes a first substrate including transmissive and reflective pixels. Gate and data lines on the first substrate cross each other to define a pixel region, with a thin film transistor at each crossing. The transmissive and reflective pixels correspond to respective pixel regions. A first passivation layer covers the thin film transistor and has a transmissive hole in the transmissive pixel. A first reflector is disposed on the first passivation layer in the reflective pixel. A second passivation layer is disposed on the first reflector and in the transmissive hole. A pixel electrode on the second passivation layer is connected to the thin film transistor. A second substrate opposing the first substrate has a color filter layer on an inner surface thereof. The color filter layer contains R, G and B sub color filters, which each correspond to a pixel region.

(65) **Prior Publication Data**

US 2004/0252262 A1 Dec. 16, 2004

(30) **Foreign Application Priority Data**

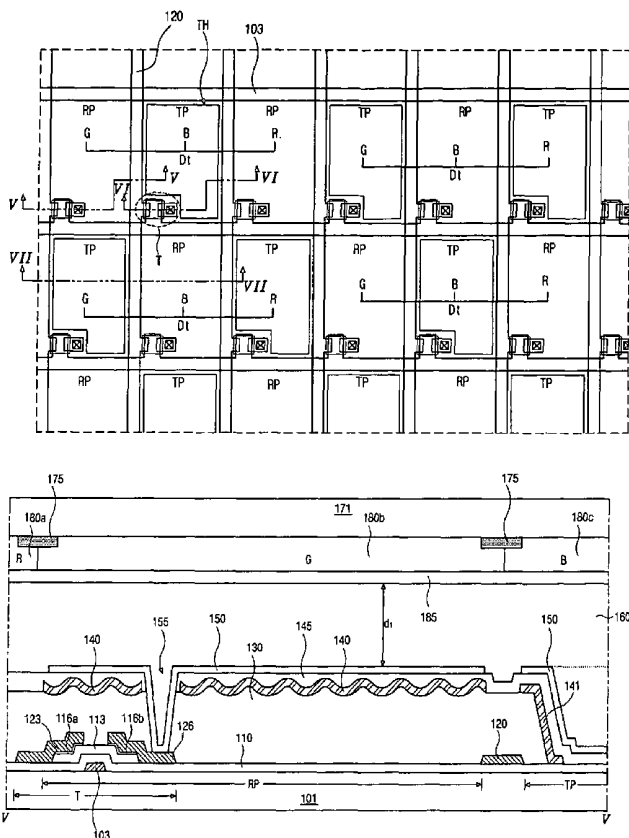
Jun. 10, 2003 (KR) 10-2003-0036990

(51) **Int. Cl.**
G02F 1/1335 (2006.01)

(52) **U.S. Cl.** **349/114**

(58) **Field of Classification Search** 349/113–114
See application file for complete search history.

41 Claims, 6 Drawing Sheets



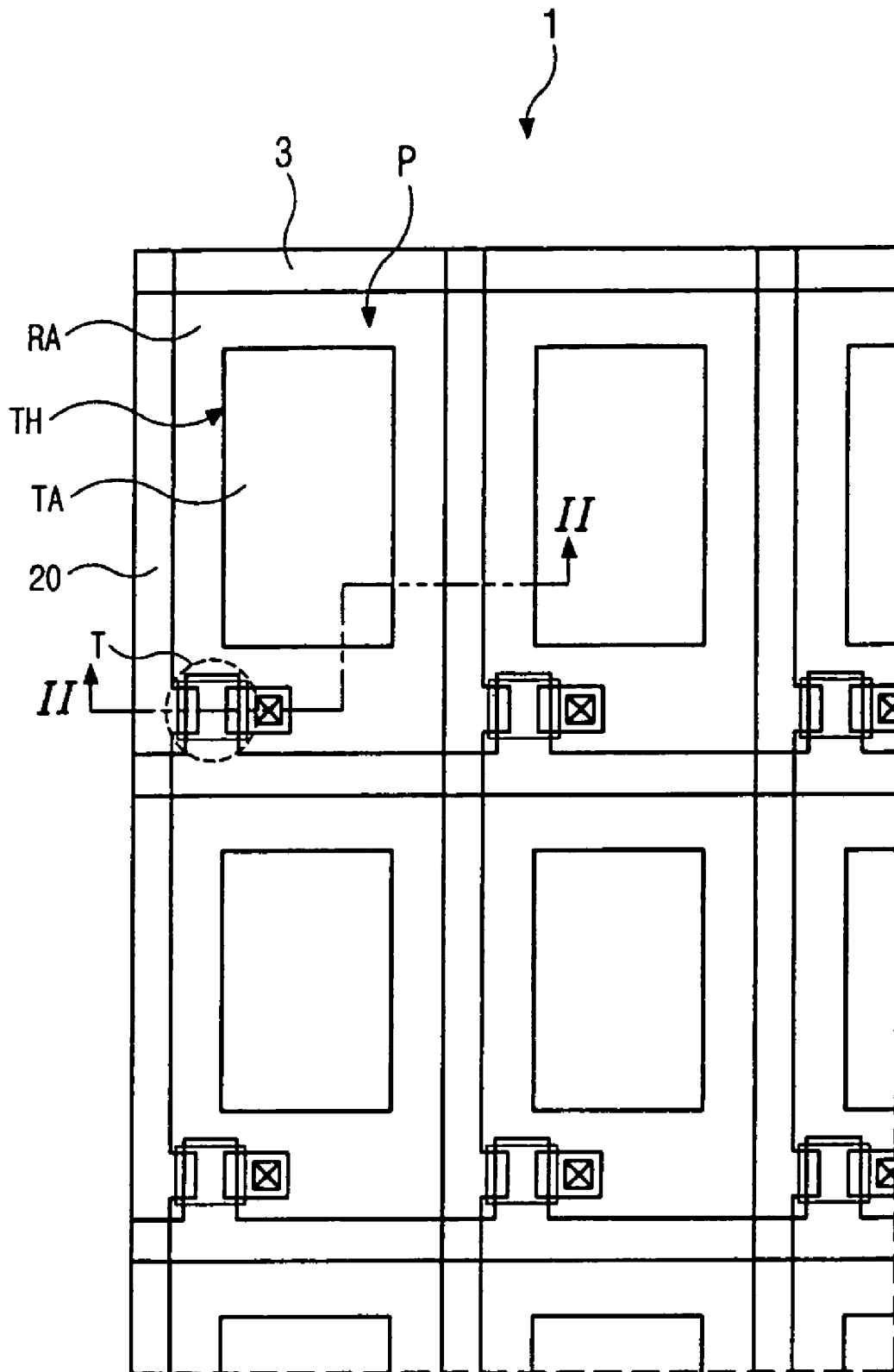


FIG. 1
(related art)

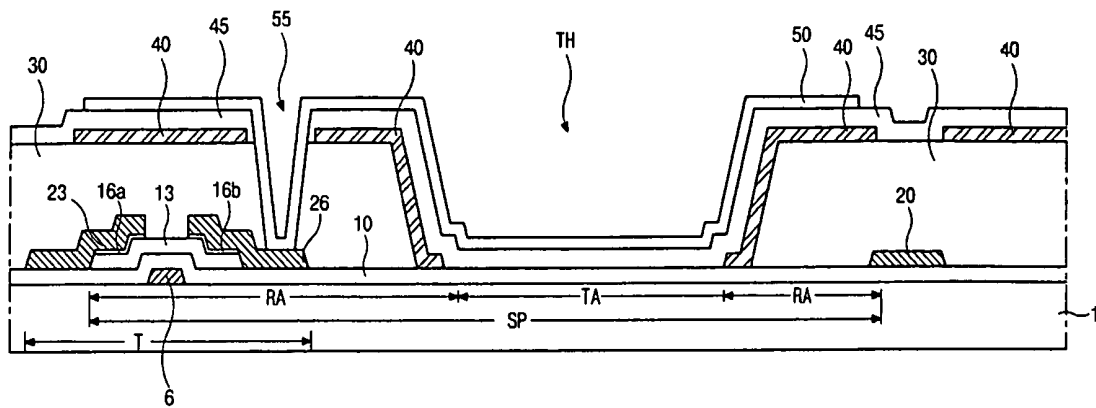


FIG. 2
(related art)

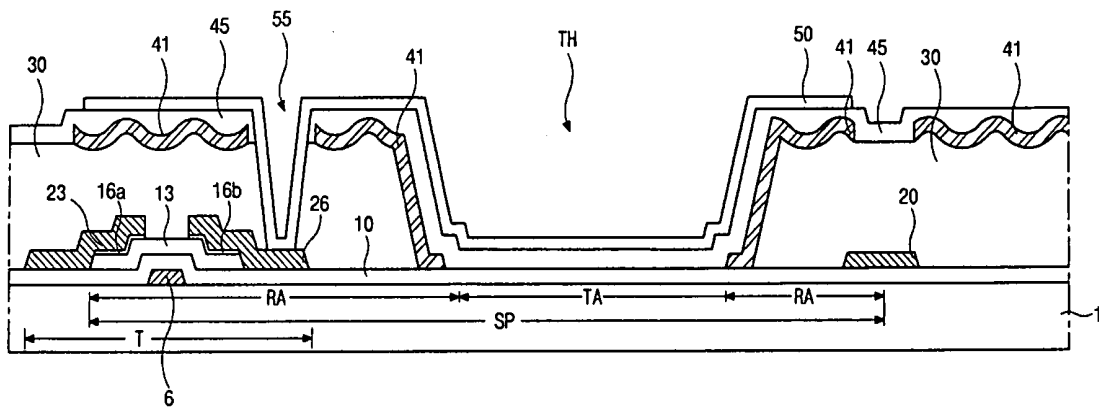


FIG. 3
(related art)

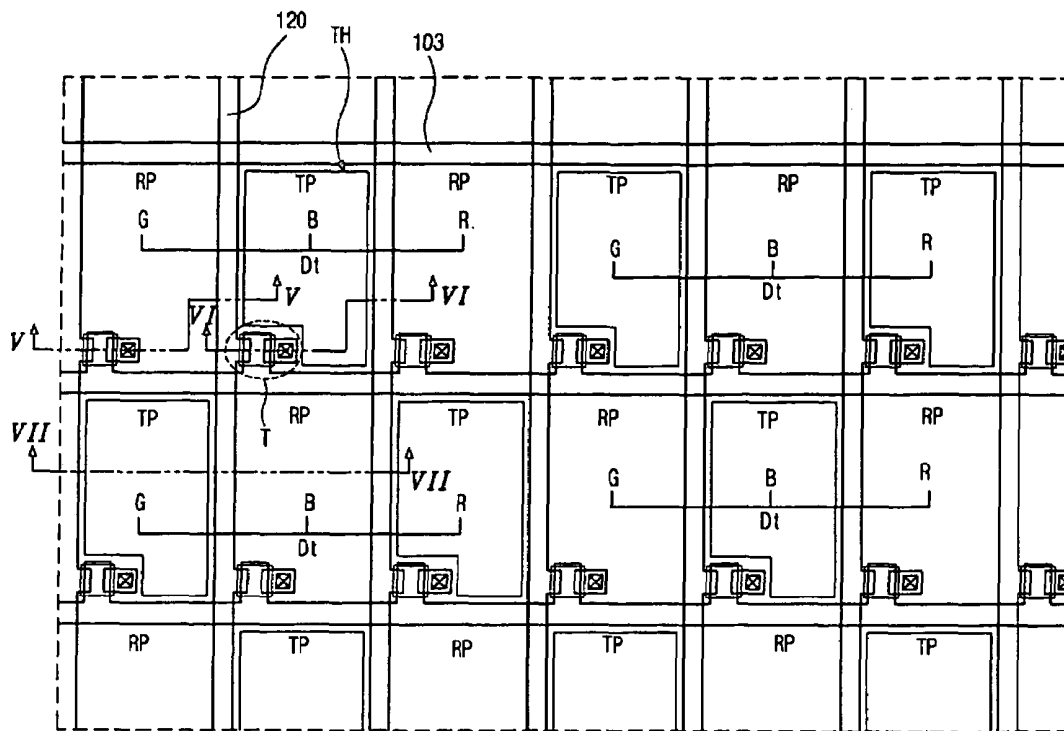


FIG. 4

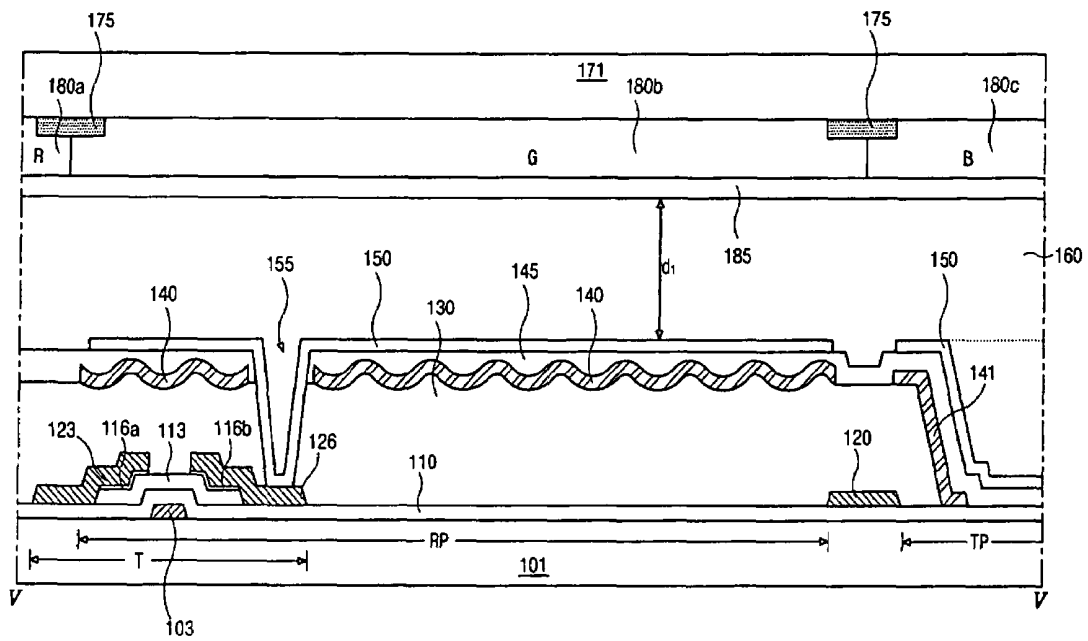


FIG. 5

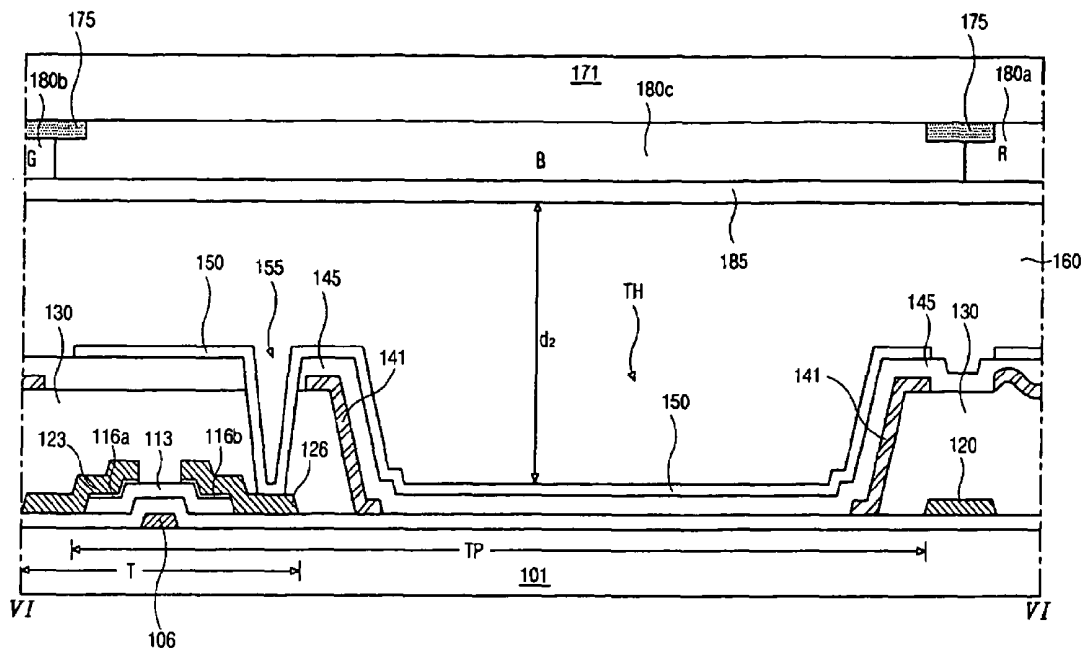


FIG. 6

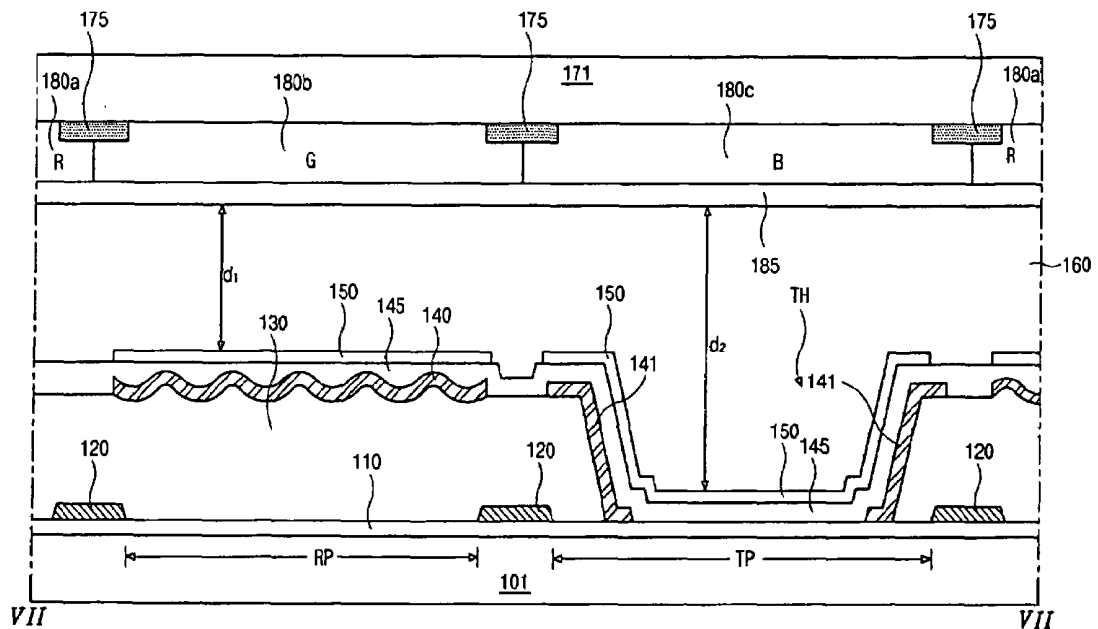


FIG. 7

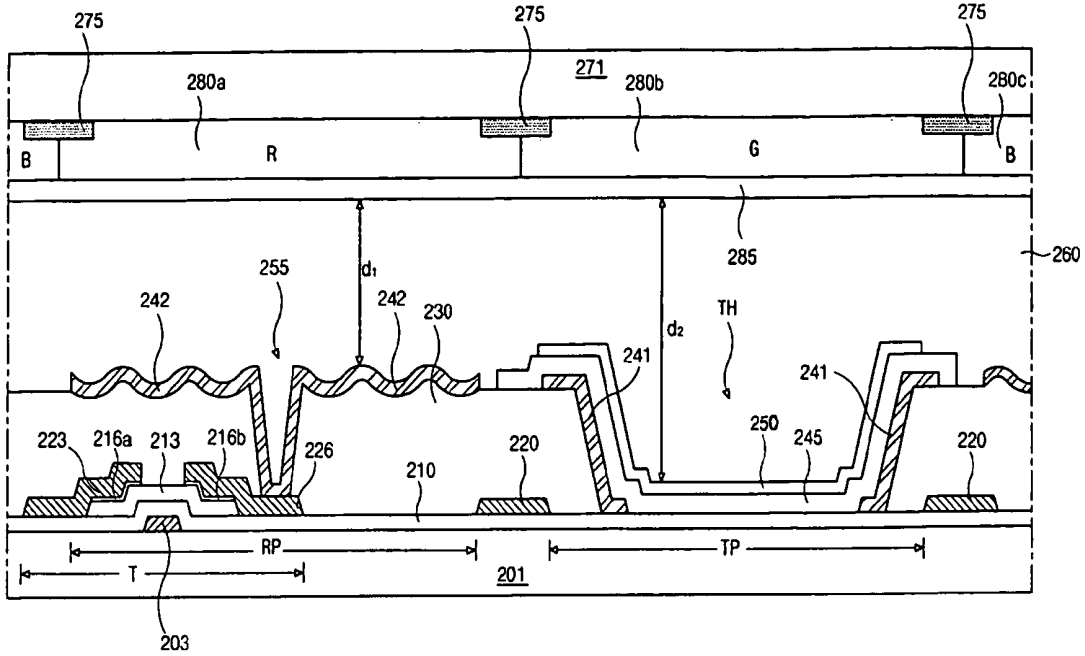


FIG. 8

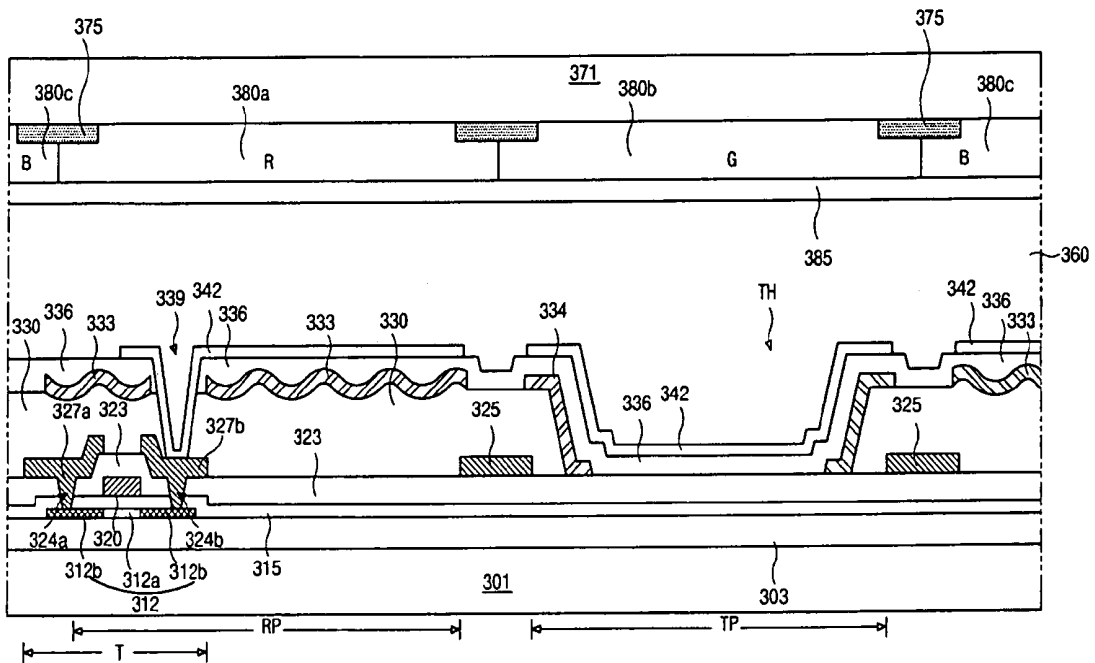


FIG. 9

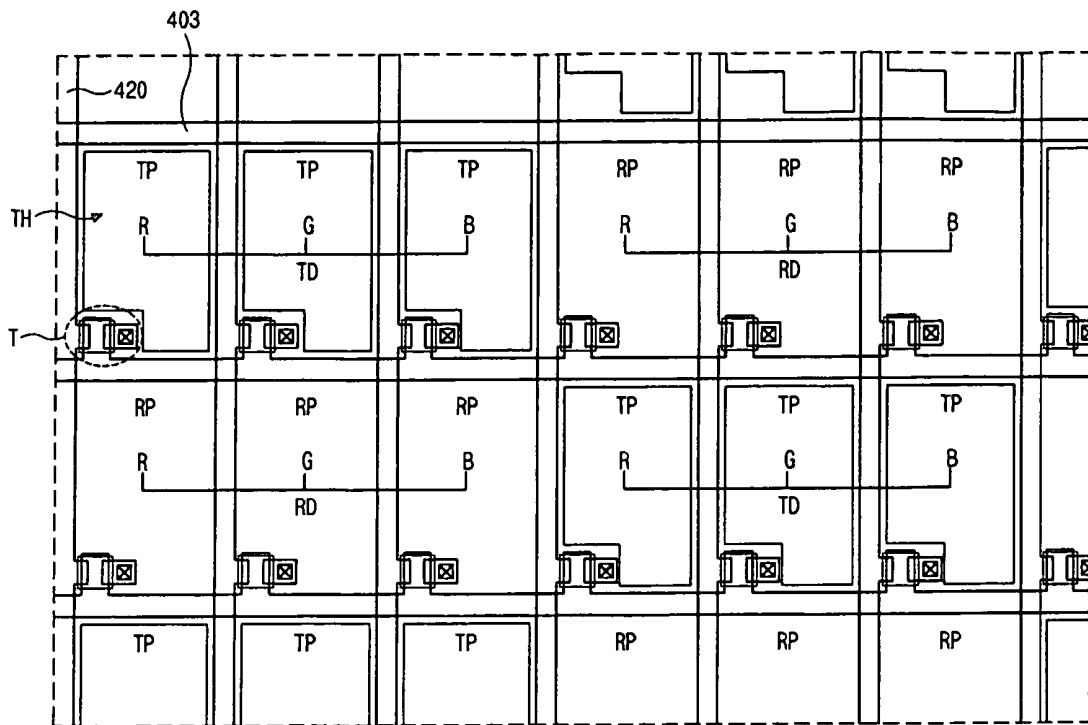


FIG. 10

TRANSFLECTIVE LIQUID CRYSTAL DISPLAY DEVICE

This application claims the benefit of Korean Patent Application No. 2003-36990, filed on Jun. 10, 2003 in Korea, which is hereby incorporated by reference for all purposes as if fully set forth herein.

BACKGROUND OF THE INVENTION

1. Field of the Invention

The present invention relates to a liquid crystal display (LCD) device and more particularly, to a transmissive liquid crystal display (LCD) device.

2. Discussion of the Related Art

Flat panel display (FPD) devices that are small, light-weight, and have low power consumption have been a subject of recent research in the advent of the information age. FPD devices may be classified into two types depending on whether the device emits or receives light. One type is a light-emitting type display device that emits light to display images, and the other type is a light-receiving type display device that uses an external light source to display images. Plasma display panels (PDPs), field emission display (FED) devices, and electroluminescent (EL) devices are examples of the light-emitting type display devices. Liquid crystal display (LCD) devices are examples of the light-receiving type display device. Among many kinds of FPD devices, LCD devices are widely used for notebook computers and desktop monitors because of their excellent characteristics of resolution, color display and display quality.

Generally, LCD devices include an upper substrate and a lower substrate facing each other with liquid crystal molecules interposed therebetween. Each substrate has an electrode on the inner surface thereof. An electric field is generated by applying a voltage to the electrodes, thereby driving the liquid crystal molecules to display images in accordance with the light transmittance.

Since LCD devices do not emit light, an additional light source is necessary. Accordingly, LCD devices display images by disposing a backlight at a backside thereof and transmitting light from the backlight. Here, electric field-generating electrodes of the LCD devices are made of a transparent conductive material and the two substrates are transparent. This kind of LCD device is referred to as a transmission type LCD device or a transmissive LCD device. Even though a transmissive LCD device can display bright images under a dark environment due to an artificial light source such as a backlight, the transmissive LCD device has a disadvantage of high power consumption due to the backlight.

To remedy this disadvantage, a reflective (or reflection type) LCD device is suggested. The reflective LCD device displays images by reflecting external natural or artificial light, thereby having a low power consumption compared with the transmissive LCD device. In the reflective LCD device, a lower electric field-generating electrode is made of a conductive material having high reflectance and an upper electric field-generating electrode is made of a transparent conductive material so that external light can be transmitted through the upper electric field-generating electrode.

The reflective LCD device has much lower power consumption than the transmissive LCD device. However, the reflective LCD device cannot be used in dark places because it depends on an external light source.

Therefore, a transmissive LCD device, which can be used both in a transmissive mode and in a reflective mode, has

been recently proposed. A transmissive LCD device of the related art will be described hereinafter more in detail.

FIG. 1 is a plan view of an array substrate for a transmissive LCD device according to the related art.

In a transmissive LCD device 1 of FIG. 1, a plurality of gate lines 3 is horizontally extended and a plurality of data lines 20 is vertically formed in the context of the figure. The gate and data lines 3 and 20 cross each other to define a pixel P. A thin film transistor T, which includes a gate electrode, a semiconductor layer, a source electrode and a drain electrode, is formed at each crossing of the gate and data lines 3 and 20.

In the pixel P, a transmissive area TA in the middle of the pixel P and a reflective area RA around the transmissive area TA are defined. To improve brightness and color properties of the transmissive and reflective modes, a transmissive hole TH is formed to create the transmissive area TA, so that cell gaps may be different in the transmissive area TA and the reflective area RA.

FIG. 2 is a cross-sectional view along the line II-II of FIG. 1. As shown in FIG. 2, a gate electrode 6 is formed on a transparent substrate 1 and a gate insulating layer 10 is formed on the gate electrode 6. A gate line (not shown) connected to the gate electrode 6 is formed under the gate insulating layer 10. An active layer 13 and an ohmic contact layer 16a and 16b are sequentially formed on the gate insulating layer 10 over the gate electrode 6. A source electrode 23 and a drain electrode 26 are formed on the ohmic contact layer 16a and 16b. The source and drain electrodes 23 and 26 with the gate electrode 6 form a thin film transistor T. A data line 20 made of the source and drain electrodes 23 and 26 is formed on the gate insulating layer 10. Although not shown in the figure, the data line 20 is connected to the source electrode 23. The data line 20 crosses the gate line to define a pixel region SP.

A first passivation layer 30 is formed on the thin film transistor T and the data line 20. The first passivation layer 30 is made of an organic material having relatively low dielectric constant. The first passivation layer 30 is removed in the transmissive area TA to create the transmissive hole TH, and remains in a reflective area RA.

A reflector 40 is formed on the first passivation layer 30 in the reflective area RA. The reflector 40 is made of a metallic material that reflects light well. The reflector 40 has a flat surface. A second passivation layer 45 is formed on the reflector 40 and the gate insulating layer 10 exposed in the transmissive area TA. The second passivation layer 45 is made of an inorganic material. The second passivation layer 45 and the first passivation layer 30 over the drain electrode 26 of the thin film transistor T are etched to form a drain contact hole 55 exposing the drain electrode 26. A pixel electrode 50 is formed on the second passivation layer 45 in the pixel region SP. The pixel electrode 50 is connected to the drain electrode 26 through the drain contact hole 55.

However, glare occurs in the transmissive LCD device. This happens when a high-intensity external light source is reflected on a liquid crystal display panel. The displayed image is poor due to the glare that occurs as viewed by an observer due to the reflection of light. Therefore, a reflector of an uneven shape is used to increase the brightness along the normal direction and to decrease the glare.

FIG. 3 is a cross-sectional view of another array substrate for a transmissive LCD device according to the related art. The array substrate of FIG. 3 has the same structure as that of FIG. 2 except for the reflector. In FIG. 3, the reflector 41 has an uneven surface due to the unevenness of the first passivation layer 30. The uneven surface of the reflector 41

results in diffused reflection of incident light minimizing specular reflection. Accordingly, a brightness along a normal direction of the transfective LCD device in the reflective mode increases by changing a reflection angle of light.

The transfective LCD device including the array substrate of FIG. 3 has good color properties.

Recently, the variety of mobile phones and personal digital assistants (PDAs) using the transfective LCD device have increased, and devices of high resolution are required. An LCD device having a high resolution of about 300 ppi (pixel per inch) includes pixels of about $84\ \mu\text{m}\times 28\ \mu\text{m}$. Here, both reflective and transmissive areas are defined in each pixel and abut each other. However, the transmissive hole forms a step in the reflective area and the uneven reflector in the reflective area extends to the transmissive area along sidewalls of the transmissive hole. Such an arrangement causes problems in the manufacturing processes, for example, metallization at the edge of the step as well as maintaining unevenness of the reflector thereby obtaining good reflective properties. In addition, since the transmissive hole is small, an alignment layer (not shown) for aligning the liquid crystal molecules in the liquid crystal layer may be poorly rubbed in a rubbing process performed after the alignment layer is provided on pixel electrode in the transmissive and reflective areas. Accordingly, transmissive properties may be lowered.

SUMMARY OF THE INVENTION

Accordingly, the present invention is directed to a transfective liquid crystal display (LCD) device that substantially obviates one or more of the problems due to limitations and disadvantages of the related art.

The present invention provides a transfective liquid crystal display (LCD) device that has high resolution and improved reflective and transmissive properties. In addition, the transfective liquid crystal display (LCD) device reduces manufacturing processes problems.

Additional features and advantages of the invention will be set forth in the description which follows, and in part will be apparent from the description, or may be learned by practice of the invention. These and other advantages of the invention will be realized and attained by the structure particularly pointed out in the written description and claims hereof as well as the appended drawings.

To achieve these and other advantages, as embodied and broadly described, a transfective liquid crystal display device includes a first substrate including a transmissive pixel and a reflective pixel, a plurality of gate lines and a plurality of data lines on the first substrate, and the gate and data lines crossing each other to define a pixel region. The transmissive pixel and the reflective pixel correspond to respective pixel regions. A thin film transistor is disposed at each crossing of the gate and data lines. A first passivation layer covers the thin film transistor and a transmissive hole is formed in the transmissive pixel. A first reflector is disposed on the first passivation layer in the reflective pixel. A second passivation layer is disposed in the transmissive hole and may or may not be formed on the first reflector. A pixel electrode is formed on the second passivation layer and, if the second passivation layer is formed on the first reflector, may be formed over the first reflector. Either the pixel electrode or the first reflector is connected to the thin film transistor. A second reflector covers the edges of the transmissive hole. A second substrate opposing the first substrate contains a color filter layer. The color filter layer

includes R, G and B sub color filters, which each correspond to one of the pixel regions. A liquid crystal layer is disposed between the substrates.

The transmissive and reflective pixels alternate in the direction parallel with the gate lines and/or parallel with the data lines. The transmissive and reflective pixels may be grouped into sets of three transmissive pixels and three reflective pixels that alternate in one of the directions, while alternating between individual transmissive and reflective pixels in the perpendicular direction.

The first and second reflectors are separated by the second passivation layer, at least in an area of the transmissive pixel that is not parallel with the transistor in along a direction parallel with the gate lines. This is to say that in the transmissive pixel, the transmissive hole is formed substantially in a dual-rectangular shape having a larger rectangle and a smaller rectangle. The smaller rectangle is disposed closer to the same gate line bounding the transmissive pixel as the transistor. The smaller rectangle has a width in the direction parallel with the data lines larger than the width of the transistor. The second reflectors covering the edges of the transmissive hole in the larger rectangle are separated from the first reflectors in the direction parallel with the gate lines.

It is to be understood that both the foregoing general description and the following detailed description are exemplary and explanatory and are intended to provide further explanation of the invention as claimed.

BRIEF DESCRIPTION OF THE DRAWINGS

The accompanying drawings, which are included to provide a further understanding of the invention and are incorporated in and constitute a part of this specification, illustrate embodiments of the invention and together with the description serve to explain the principles of the invention.

In the drawings:

FIG. 1 is a plan view of an array substrate for a transfective LCD device according to the related art;

FIG. 2 is a cross-sectional view along the line II-II of FIG. 1;

FIG. 3 is a cross-sectional view of another array substrate for a transfective LCD device according to the related art;

FIG. 4 is a schematic plan view of a transfective liquid crystal display (LCD) device according to a first embodiment of the present invention;

FIG. 5 is a cross-sectional view along the line V-V of FIG. 4;

FIG. 6 is a cross-sectional view along the line VI-VI of FIG. 4;

FIG. 7 is a cross-sectional view along the line VII-VII of FIG. 4;

FIG. 8 is a cross-sectional view of another transfective LCD device according to an embodiment of the present invention;

FIG. 9 is a cross-sectional view of another transfective LCD device according to an embodiment of the present invention; and

FIG. 10 is a schematic plan view of a transfective liquid crystal display (LCD) device according to a second embodiment of the present invention.

DETAILED DESCRIPTION OF THE
ILLUSTRATED EMBODIMENTS

Reference will now be made in detail to embodiments of the present invention, examples of which are illustrated in the accompanying drawings.

FIG. 4 is a schematic plan view of a transmissive liquid crystal display (LCD) device according to a first embodiment of the present invention.

As shown in FIG. 4, a plurality of gate lines **103** is formed horizontally in the context of the figure and is spaced apart from each other. A plurality of data lines **120** is formed vertically in the context of the figure. The gate and data lines **103** and **120** cross each other to define a pixel region. A thin film transistor T is formed at each crossing of the gate and data lines **103** and **120** as a switching element. A color filter layer, which contains red (R), green (G) and blue (B) sub-color filters, is formed at each pixel region, and each sub-color filter corresponds to one pixel region. The pixel region corresponding to one sub-color filter may be referred to as a sub pixel, and three sub pixels of R, G and B may constitute one dot Dt.

In the related art, one sub pixel has both a transmissive area and a reflective area, while the transmissive area and the reflective area correspond to respective sub pixels in the embodiments shown. The respective sub pixels are referred to as a transmissive pixel TP and a reflective pixel RP. The transmissive pixel TP and the reflective pixel RP are alternately arranged. The transmissive pixel TP is disposed between adjacent reflective pixels RP up and down and right and left, and the reflective pixel RP is disposed between adjacent transmissive pixels TP up and down and right and left. In other words, transmissive pixels TP are adjacent to each other diagonally and reflective pixels RP are adjacent to each other diagonally as shown in FIG. 4.

Although not shown in detail, a transmissive hole TH is formed in the transmissive pixel TP. The transmissive hole TH makes a step between the transmissive pixel TP and the reflective pixel RP.

FIGS. 5, 6 and 7 are cross-sectional views of the transmissive LCD device according to the first embodiment of the present invention, and correspond to cross-sections along the line V-V, the line VI-VI and the line VII-VII of FIG. 4, respectively. FIG. 5 shows a reflective pixel including a thin film transistor, FIG. 6 shows a transmissive pixel including a thin film transistor, and FIG. 7 shows the middle portion of both the reflective pixel and the transmissive pixel.

In FIGS. 5 to 7, a gate electrode **106** is formed on a first substrate **101** at each pixel RP and TP, and a gate insulating layer **110** is formed on an entire surface of the first substrate **101** including the gate electrode **106** thereon. The gate electrode **106** may be made of a metallic material and the gate insulating layer **110** may be made of an inorganic insulating material. An active layer **113** and an ohmic contact layer **116a** and **116b** are sequentially formed on the gate insulating layer **110** corresponding to the gate electrode **106**. The active layer **113** and the ohmic contact layer **116a** and **116b** are a semiconductor layer. The active layer **113** may be made of amorphous silicon and the ohmic contact layer **116a** and **116b** may be made of doped amorphous silicon. A source electrode **123** and a drain electrode **126** are formed on the ohmic contact layer **116a** and **116b**. The source electrode **123** and the drain electrode **126** are spaced apart over the gate electrode **106**. The source electrode **123** and the drain electrode **126** may be made of a metallic material.

The gate electrode **106**, the semiconductor layer **113**, **116a** and **116b**, the source electrode **123** and the drain electrode **126** constitute a thin film transistor T.

Additionally, a data line **120** made of the same material as the source and drain electrodes **123** and **126** is formed on the gate insulating layer **110**. The data line **120** divides the reflective pixel RP from the transmissive pixel TP. Although not shown, the data line **120** is connected to the source electrode **123**.

A first passivation layer **130** is formed on the thin film transistor T and the data line **120**. The passivation layer **130** may be made of an organic insulating material such as benzocyclobutene (BCB) or photo acryl. In the reflective pixel RP of FIGS. 5 and 7, the first passivation layer **130** has an uneven surface. In the transmissive pixel TP of FIGS. 6 and 7, the first passivation layer **130** is patterned except for over the thin film transistor T to have a transmissive hole TH. The gate insulating layer **110** is exposed by the transmissive hole TH.

A first reflector **140** and a second reflector **141** are formed on the first passivation layer **130**. The first reflector **140** is disposed in the reflective pixel RP and the second reflector **141** is situated in the transmissive pixel TP. The first and second reflectors **140** and **141** may be made of a metallic material that reflects light well such as aluminum or aluminum alloy and may be formed at the same time. The first reflector **140** is uneven due to the first passivation layer **130** having an uneven surface. The unevenness of the first reflector **140** may increase reflective efficiency. The first reflector **140** covers the thin film transistor T, and is removed over a portion of the drain electrode **126**. The second reflector **141** is removed in an area corresponding to the transmissive hole TH, and covers the sides of the first passivation layer **130**. The second reflector **141** may prevent disclination caused by stepping from the transmissive hole TH. The second reflector **141** may also be omitted if desired.

A second passivation layer **145** is formed on an entire surface of the first substrate **101** including the reflectors **140** and **141** by depositing an inorganic material such as silicon nitride (SiN_x) or silicon oxide (SiO_2) or by coating an organic material such as benzocyclobutene (BCB) or photo acryl. The second passivation layer **145** has a drain contact hole **155** exposing the drain electrode **126** through the first passivation layer **130**. The second passivation layer **145** has a flat surface in the reflective pixel RP.

A pixel electrode **150** is formed on the second passivation layer **145** by depositing a transparent conducting material such as indium-tin-oxide (ITO) or indium-zinc-oxide (IZO). The pixel electrode **150** is connected to the drain electrode **126** through the drain contact hole **155**.

Here, although the thin film transistor T has a bottom gate structure, the thin film transistor T may have other structure, for example, a top gate structure.

Meanwhile, a second substrate **171** is spaced apart from and faces the first substrate **101**. A black matrix **175** is formed on an inner surface of the second substrate **171** (i.e., a surface facing the first substrate). The black matrix **175** corresponds to the gate line (not shown) and the data line **120**. A color filter layer of R, G and B sub color filters **180a**, **180b** and **180c** is formed on the black matrix **175**. Each sub color filter **180a**, **180b** and **180c** corresponds to each pixel TP and RP. A common electrode **185** is formed on an entire surface of the second substrate **171** including the color filter layer **180a**, **180b** and **180c**. An overcoat layer (not shown) may be further formed between the common electrode **185** and the color filter layer **180a**, **180b** and **180c**.

The black matrix **175** corresponding to the gate line and the data line may be omitted, and the transfective LCD device may have a high aperture ratio.

In this embodiment, the distance between the pixel electrode **150** and the common electrode **185** is defined as a cell gap. Since the transmissive hole TH is formed in the transmissive pixel TP, a cell gap d_2 of the transmissive pixel TP is larger than a cell gap d_1 of the reflective pixel RP. The cell gap d_2 of the transmissive pixel TP, beneficially, may be about twice as wide as the cell gap d_1 of the reflective pixel RP.

FIG. **8** is a cross-sectional view of another transfective LCD device according to an embodiment of the present invention, and shows both the transmissive pixel and the reflective pixel. The transfective LCD device of FIG. **8** has a structure similar to the transfective LCD device structure of FIGS. **5** to **7**. The same references of FIGS. **5** to **7** may be used in FIG. **8** and detailed explanation of the same parts may be omitted.

In this transfective LCD device, a reflector **242** of a reflective pixel RP functions as a reflective electrode, which is connected to a drain electrode **226** of a thin film transistor T, without the pixel electrode.

More particularly, a first passivation layer **230** is formed over the thin film transistor T, which contains a gate electrode **206**, a semiconductor layer **213**, **216a** and **216b**, a source electrode **223** and the drain electrode **226**. The first passivation layer **230** has an uneven surface in the reflective pixel RP and includes a transmissive hole TH in the transmissive pixel TP. The transmissive hole TH exposes a gate insulating layer **210**. The first passivation layer **230** also has a drain contact hole **255** exposing the drain electrode **226**.

A reflective electrode **242** is formed on the first passivation layer **230** in the reflective pixel RP and a reflector **241** is formed on the first passivation layer **230** in the transmissive pixel TP. The reflective electrode **242** and the reflector **241** may be formed by depositing a metallic material such as aluminum or an aluminum alloy that reflects light well and patterning the metallic material. The reflective electrode **242** has unevenness due to the uneven surface of the first passivation layer **230**. The reflective electrode **242** is connected to the drain electrode **226** through the drain contact hole **255**. Thus, as stated above, the reflective electrode **242** functions as a reflector and a pixel electrode.

The reflector **241** covers the sides of the first passivation layer **230**, and is removed in the transmissive hole TH.

A second passivation layer **245** is formed on the first passivation layer **230**, the reflector **241** and the exposed gate insulating layer **210**. The second passivation layer **245** may be disposed only in the transmissive pixel TP. The second passivation layer **245** may be also formed on the reflective electrode **242** in the reflective pixel RP.

A pixel electrode **250** made of a transparent conductive material is formed on the second passivation layer **245** in the reflective pixel RP. The pixel electrode **250** may overlap a data line **220**. Although not shown in the figure, the pixel electrode **250** is connected to another drain electrode through another drain contact hole, which may be formed through the first and second passivation layers **230** and **245**.

The reflector **241** prevents light leakage around the transmissive hole TH, and may be omitted. If the reflector **241** is not formed, the second passivation layer **245** in the transmissive pixel TP may be also omitted.

Amorphous silicon is used as the active layer of the thin film transistor T, and research and development into polycrystalline silicon, recently, is ongoing. The field effect mobility of polycrystalline silicon is 100 to 200 times

greater than that of amorphous silicon. Additionally, polycrystalline silicon is optically and thermally stable. Polycrystalline silicon is also suited for use in driver integrated circuits (ICs) for driving the display devices, and thus has the advantage that devices can have a compact size because thin film transistors and driver ICs may be formed on the same substrate. Therefore, polycrystalline silicon may be used in small sized display devices such as cellular phones, personal digital assistants (PDAs) and notebook computers.

FIG. **9** is a cross-sectional view of another transfective LCD device according to an embodiment of the present invention, and includes polycrystalline silicon as an active layer of a thin film transistor. The transfective LCD device including polycrystalline silicon may have substantially the same plan structure as the transfective LCD device including amorphous silicon. The same references of FIGS. **5** to **7** may be used in the same part of FIG. **9**, and detailed explanation of the same parts may be omitted.

In FIG. **9**, a buffer layer **303** is formed on an entire surface of a transparent substrate **301**. The buffer layer **303** may be made of an inorganic material such as silicon oxide (SiO_2). In a reflective pixel RP, a semiconductor layer **312** is formed on the buffer layer **303**. The semiconductor layer **312** includes an active area **312a** of pure polycrystalline silicon and source/drain areas **312b** of doped polycrystalline silicon at both sides of the active area **312a**. A gate insulating layer **315** is formed on an entire surface of the substrate **301** including being formed over the semiconductor layer **312**. A gate electrode **320** is formed on the gate insulating layer **315** over the active area **312a**. An inter insulating layer **323** is formed on the gate electrode **320**. Semiconductor layer contact holes **324a** and **324b** are formed through the inter insulating layer **323** and the gate insulating layer **315** to expose the source/drain areas **312b**. A source electrode **327a** and a drain electrode **327b** are formed on the inter insulating layer **323**. The source and drain electrodes **327a** and **327b** are connected to the source/drain areas **312b** through the semiconductor layer contact holes **324a** and **324b**, respectively. The source and drain electrodes **327a** and **327b** constitute a thin film transistor T with the gate electrode **323** and the semiconductor layer **312**. Although the thin film transistor T is shown only in the reflective pixel RP, the thin film transistor T is also formed in a transfective pixel TP.

In addition, a data line **325** is formed on the inter insulating layer **323**. The data line **325** may be formed of the same material as the source and drain electrodes **327a** and **327b**. The data line **325** divides the reflective pixel RP from the transmissive pixel TP. Although not shown, the data line **325** is connected to the source electrode **327a**.

A first passivation layer **330** is formed on the source and drain electrodes **327a** and **327b**. The first passivation layer **330** has a drain contact hole **339** exposing the drain electrode **327b**. The first passivation layer **330** has an uneven surface in the reflective pixel RP and includes a transmissive hole TH in the transmissive pixel TP. The transmissive hole TH exposes the inter insulating layer **323** in the transmissive pixel TP.

A first reflector **333** is formed on the first passivation layer **330** in the reflective pixel RP and a second reflector **334** is formed on the first passivation layer **330** in the transmissive pixel TP. The first and second reflectors **333** and **334** may be formed of a metallic material that reflects light well such as aluminum or aluminum alloy. The first reflector **333** has unevenness due to the uneven surface of the first passivation layer **330**. The unevenness of the first reflector **333** increases reflectance. The first reflector **333** covers the thin film transistor T and is removed over a portion of the drain

electrode **327b**. The second reflector **334** covers the sides of the first passivation layer **330** in the transmissive hole TH.

A second passivation layer **336** is formed on the first and second reflectors **333** and **334**. The second passivation layer **336** may be formed by depositing an inorganic material such as silicon nitride or silicon oxide or by coating an organic material such as benzocyclobutene (BCB) or photo acryl. The second passivation layer **336** has a drain contact **339** exposing the drain electrode **327b** through the first passivation layer **330**. The second passivation layer **336** contacts the inter insulating layer **323** in the transmissive pixel TP.

A pixel electrode **342** is formed on the second passivation layer **336** by depositing a transparent conducting material such as indium-tin-oxide (ITO) or indium-zinc-oxide (IZO). The pixel electrode **342** is connected to the drain electrode **327b** through the drain contact hole **339**.

Since a color filter substrate including a black matrix **375**, a color filter layer **380a**, **380b** and **380c**, and a common electrode **385** has the same structure as the previous examples, detailed explanation for the color filter substrate may be omitted.

In this embodiment including polycrystalline silicon, a reflective electrode may be formed by connecting the first reflector **333** to the drain electrode **327b** without the pixel electrode **342** in the reflective pixel RP. At this time, the second passivation layer **336** over the first reflector **333** may be also omitted.

In the above embodiments of present invention, because the reflective area and the transmissive area are formed in respective pixels, the reflective area or the transmissive area increases in each pixel. Thus, although a liquid crystal display device has high resolution of about 300 ppi (pixel per inch) and has smaller pixel areas, problems in manufacturing processes may be overcome.

FIG. 10 is a schematic plan view of a transfective liquid crystal display (LCD) device according to a second embodiment of the present invention. In the second embodiment, either three transmissive pixels or three reflective pixels are formed in one dot including sub pixels of R, G and B.

As shown in FIG. 10, a plurality of gate lines **403** is formed horizontally in the context of the figure and is spaced apart from each other. A plurality of data lines **420** is formed vertically in the context of the figure. The gate and data lines **403** and **420** cross each other to define a pixel region. A thin film transistor T is formed at each crossing of the gate and data lines **403** and **420** as a switching element. A color filter layer, which is contains red (R), green (G) and blue (B) sub-color filters, is formed at each pixel region, and each sub-color filter corresponds to one pixel region. The pixel region corresponding to one sub-color filter may be referred to as a sub pixel, which is classified into a transmissive pixel TP and a reflective pixel RP. Three transmissive pixels TP of R, G and B constitute one transmissive dot TD and three reflective pixels RP of R, G and B form one reflective dot RD. Each transmissive pixel TP of the transmissive dot TD includes a transmissive hole (not shown) and each reflective pixel RP of the reflective dot RD has a reflector (not shown). The transmissive hole may be formed in a passivation layer to cause stepping.

The transmissive dot TD and the reflective dot RD may be alternately arranged, and thus the reflective dot RD may be disposed in the upper and lower sides and in the left and right sides of the transmissive dot TD.

Each reflective pixel RP of the reflective dot RD and each transmissive pixel TP of the transmissive dot TD may have the same structures as examples of the first embodiment.

In the transfective LCD device of the embodiments shown of the present invention, since the reflective area and the transfective area are formed respective pixel regions, problems in the manufacturing processes may be reduced. In

addition, productivity may be increased according to decreasing badness in the manufacturing processes.

Particularly, arranging problems in a rubbing process may be solved and an uneven reflector may be formed without difficulty, and thus the transfective LCD device may have high resolution and good reflective and transmissive properties.

It will be apparent to those skilled in the art that various modifications and variations can be made in the fabrication and application of the present invention without departing from the spirit or scope of the invention. Thus, it is intended that the present invention cover the modifications and variations of this invention provided they come within the scope of the appended claims and their equivalents.

What is claimed is:

1. A transfective liquid crystal display device, comprising:

a first substrate including a transmissive pixel and a reflective pixel;

a plurality of gate lines and a plurality of data lines on the first substrate, the gate and data lines crossing each other to define a pixel region, the transmissive and reflective pixels correspond to respective pixel regions; a thin film transistor at each crossing of the gate and data lines;

a first passivation layer covering the thin film transistor, the first passivation layer having a transmissive hole in the transmissive pixel;

a first reflector on the first passivation layer in the reflective pixel;

a second passivation layer in the transmissive pixel;

a pixel electrode on the second passivation layer;

a second substrate spaced apart from and facing the first substrate;

a color filter layer on an inner surface of the second substrate, the color filter layer containing red (R), green (G) and blue (B) sub color filters, each sub color filter corresponding to one of the pixel regions;

a liquid crystal layer between the first and second substrates; and

a second reflector between the first and second passivation layers in the transmissive pixel, the second reflector covering sides of the first passivation layer corresponding to the transmissive hole,

wherein the second reflector overlaps the data lines.

2. The device according to claim 1, wherein the thin film transistor has a bottom gate structure, which includes a gate electrode, a gate insulating layer on the gate electrode, an active layer of amorphous silicon on the gate insulating layer, an ohmic contact layer of doped amorphous silicon on the active layer, source and drain electrodes on the ohmic contact layer.

3. The device according to claim 1, wherein the thin film transistor has a top gate structure, which includes a semiconductor layer of polycrystalline silicon having an active area and source and drain areas, a gate insulating layer on the semiconductor layer, a gate electrode on the gate insulating layer over the active area, an inter insulating layer on the gate electrode, and source and drain electrodes on the inter insulating layer, the source and drain electrodes are connected to the source and drain areas, respectively.

4. The device according to claim 1, wherein three pixel regions of R, G and B extending in a first direction parallel with the gate lines constitute one dot.

5. The device according to claim 4, wherein the transmissive pixel and the reflective pixel are alternately arranged in the first direction.

11

6. The device according to claim 5, wherein the dot includes one transmissive pixel and two reflective pixels.

7. The device according to claim 5, wherein the dot includes two transmissive pixels and one reflective pixel.

8. The device according to claim 5, wherein the transmissive and reflective pixels are alternately arranged in a second direction orthogonal to the first direction.

9. The device according to claim 4, wherein the dots include a transmissive dot having three transmissive pixels and a reflective dot having three reflective pixels.

10. The device according to claim 9, wherein the transmissive and reflective dots are alternately arranged in the first direction.

11. The device according to claim 10, wherein the transmissive and reflective dots are alternately arranged in a second direction orthogonal to the first direction.

12. The device according to claim 1, wherein the second passivation layer is disposed on the first reflector.

13. The device according to claim 1, wherein the first passivation layer has an uneven surface and the first reflector formed on the uneven surface of the first passivation layer is uneven.

14. The device according to claim 13, wherein the first passivation layer has an even surface between the first reflector and the second reflector and on which the first reflector is not formed.

15. The device according to claim 14, wherein the even surface of the first passivation layer essentially corresponds to an area above which the data lines are formed.

16. The device according to claim 15, wherein the second passivation layer covers at least a portion of the even surface.

17. The device according to claim 13, wherein the second passivation layer separates the second reflector from the first reflector.

18. The device according to claim 13, wherein no portion of the first passivation over which the second reflector is formed has an uneven surface.

19. The device according to claim 1, wherein the transmissive hole is formed in an area adjacent to the transistor in a direction parallel with the gate lines.

20. The device according to claim 1, wherein the pixel electrode is formed in the reflective pixel.

21. The device according to claim 20, wherein the pixel electrode is connected to the thin film transistor.

22. A transreflective liquid crystal display device, comprising:

a first substrate including a transmissive pixel and a reflective pixel;

a plurality of gate lines and a plurality of data lines on the first substrate, the gate and data lines crossing each other to define a pixel region, the transmissive pixel and the reflective pixel corresponding to respective pixel regions;

a thin film transistor at each crossing of the gate and data lines;

a first passivation layer covering the thin film transistor, the first passivation layer having a transmissive hole in the transmissive pixel;

a reflective electrode on the first passivation layer in the reflective pixel, the reflective electrode connected to the thin film transistor;

a pixel electrode disposed in the transmissive pixel and connected to the thin film transistor;

a second substrate spaced apart from and facing the first substrate;

12

a color filter layer on an inner surface of the second substrate, the color filter layer containing red (R), green (G) and blue (B) sub color filters, each sub color filter corresponding to one of the pixel regions;

a liquid crystal layer between the first and second substrates;

a second passivation layer disposed in the transmissive pixel on which the pixel electrode is disposed; and a reflector between the first and second passivation layers in the transmissive pixel,

wherein the reflector covers sides of the first passivation layer corresponding to the transmissive hole, and overlaps the data lines.

23. The device according to claim 22, wherein the second passivation layer does not cover the reflective electrode.

24. The device according to claim 23, wherein the second passivation layer terminates before extending into the reflective pixel.

25. The device according to claim 22, wherein the first passivation layer has an uneven surface and the reflective electrode formed on the uneven surface of the first passivation layer is uneven.

26. The device according to claim 25, wherein the first passivation layer has an even surface between the reflective electrode and the reflector on which the reflective electrode is not formed.

27. The device according to claim 26, wherein the even surface of the first passivation layer essentially corresponds to an area above which the data lines are formed.

28. The device according to claim 27, wherein the second passivation layer covers at least a portion of the even surface.

29. The device according to claim 27, wherein the pixel electrode terminates before extending substantially into an area over the portion of the even surface.

30. The device according to claim 25, wherein the second passivation layer covers the reflector and separates the reflector from the reflective electrode.

31. The device according to claim 25, wherein no portion of the first passivation over which the reflector is formed has an uneven surface.

32. The device according to claim 22, wherein the thin film transistor has a bottom gate structure, which includes a gate electrode, a gate insulating layer on the gate electrode, an active layer of amorphous silicon on the gate insulating layer, an ohmic contact layer of doped amorphous silicon on the active layer, source and drain electrodes on the ohmic contact layer.

33. The device according to claim 22, wherein the thin film transistor has a top gate structure, which includes a semiconductor layer of polycrystalline silicon having an active area and source and drain areas, a gate insulating layer on the semiconductor layer, a gate electrode on the gate insulating layer over the active area, an inter insulating layer on the gate electrode, and source and drain electrodes on the inter insulating layer, the source and drain electrodes are connected to the source and drain areas, respectively.

34. The device according to claim 22, wherein three pixel regions of R, G and B extending in a first direction parallel with the gate lines constitute one dot.

35. The device according to claim 34, wherein the transmissive pixel and the reflective pixel are alternately arranged in the first direction.

36. The device according to claim 35, wherein the dot includes one transmissive pixel and two reflective pixels.

13

37. The device according to claim 35, wherein the dot includes two transmissive pixels and one reflective pixel.

38. The device according to claim 34, wherein the dots include a transmissive dot having three transmissive pixels and a reflective dot having three reflective pixels.

39. The device according to claim 38, wherein the transmissive dot and the reflective dot are alternately arranged in the first direction.

14

40. The device according to claim 39, wherein the transmissive and reflective dots are alternately arranged in a second direction orthogonal to the first direction.

41. The device according to claim 22, wherein the transmissive hole is formed in an area adjacent to the transistor in a direction parallel with the gate lines.

* * * * *

| | | | |
|----------------|---|---------|------------|
| 专利名称(译) | 透反液晶显示装置 | | |
| 公开(公告)号 | US7248316 | 公开(公告)日 | 2007-07-24 |
| 申请号 | US10/813797 | 申请日 | 2004-03-30 |
| [标]申请(专利权)人(译) | 乐金显示有限公司 | | |
| 申请(专利权)人(译) | LG.飞利浦液晶CO., LTD. | | |
| 当前申请(专利权)人(译) | LG DISPLAY CO. LTD. | | |
| [标]发明人 | PARK JAE DEOK | | |
| 发明人 | PARK, JAE-DEOK | | |
| IPC分类号 | G02F1/1335 G02F1/1333 G02F1/1362 | | |
| CPC分类号 | G02F1/133555 G02F1/133371 G02F1/136227 | | |
| 代理机构(译) | BRINKS霍费尔GILSON & LIONE | | |
| 审查员(译) | NGUYEN, 龚便T. | | |
| 优先权 | 1020030036990 2003-06-10 KR | | |
| 其他公开文献 | US20040252262A1 | | |
| 外部链接 | Espacenet USPTO | | |

摘要(译)

透反液晶显示装置包括第一基板，第一基板包括透射和反射像素。第一基板上的栅极线 and 数据线彼此交叉以限定像素区域，每个交叉处具有薄膜晶体管。透射和反射像素对应于各个像素区域。第一钝化层覆盖薄膜晶体管并且在透射像素中具有透射孔。第一反射器设置在反射像素中的第一钝化层上。第二钝化层设置在第一反射器和透射孔中。第二钝化层上的像素电极连接到薄膜晶体管。与第一基板相对的第二基板在其内表面上具有滤色器层。滤色器层包含R, G和B子滤色器，每个子滤色器对应于像素区域。

