



(19) **United States**

(12) **Patent Application Publication**
AHN et al.

(10) **Pub. No.: US 2010/0195009 A1**

(43) **Pub. Date: Aug. 5, 2010**

(54) **TRANSFLECTIVE LIQUID CRYSTAL DISPLAY DEVICE AND FABRICATING METHOD THEREOF**

Publication Classification

(51) **Int. Cl.**
G02F 1/1343 (2006.01)

(52) **U.S. Cl.** **349/38**

(57) **ABSTRACT**

A liquid crystal display device is provided that includes: first and second substrate; a gate line of a double layer having a first transparent conductive layer and a second opaque conductive layer on the first substrate; a first insulation layer on the gate line; a data line crossing the gate line to define a pixel region, the pixel region having a transmissive region and a reflective region; a thin film transistor connected to the gate and data lines; a pixel electrode formed of the transparent conductive layer in the pixel region; an upper storage electrode forming a storage capacitor by overlapping the gate line with the gate insulating film there between; a transmission hole to exposing the pixel electrode by passing through a second insulation layer on the thin film transistor to the first insulation layer; a reflective electrode connecting the pixel electrode with a drain electrode and the upper storage electrode through an edge part of the transmission hole; a gate pad extending from the first conductive layer of the gate line; a data pad formed of the first conductive layer and connected to the data line through a data link; and a liquid crystal layer between the first and second substrates, wherein the first and second insulation layers are removed in the gate and data pads.

(76) Inventors: **Byung Chul AHN**, Anyang-si (KR); **Jong Woo Park**, Buk-gu (KR)

Correspondence Address:
MCKENNA LONG & ALDRIDGE LLP
1900 K STREET, NW
WASHINGTON, DC 20006 (US)

(21) Appl. No.: **12/756,319**

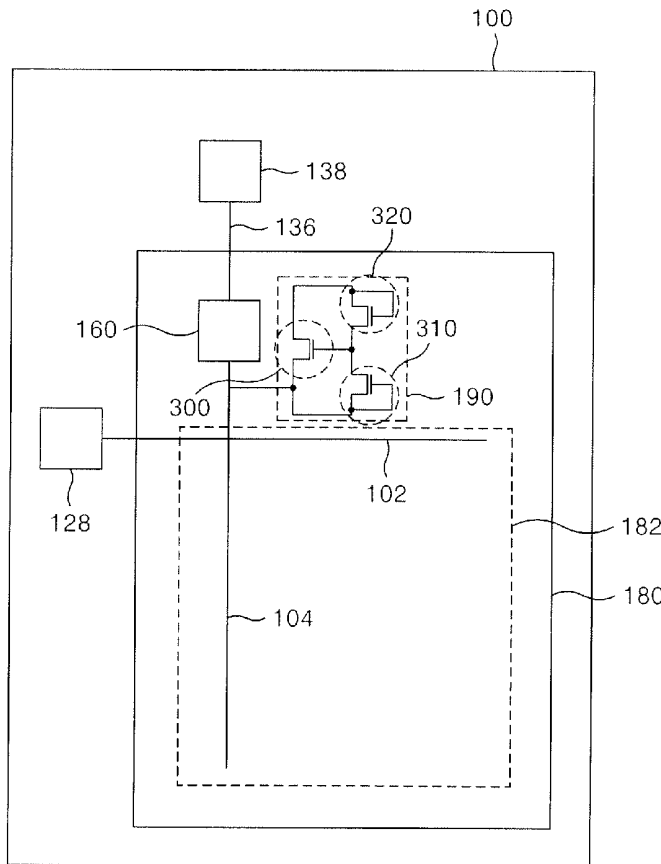
(22) Filed: **Apr. 8, 2010**

Related U.S. Application Data

(62) Division of application No. 11/143,658, filed on Jun. 3, 2005.

Foreign Application Priority Data

(30) Jun. 5, 2004 (KR) 2004-041143



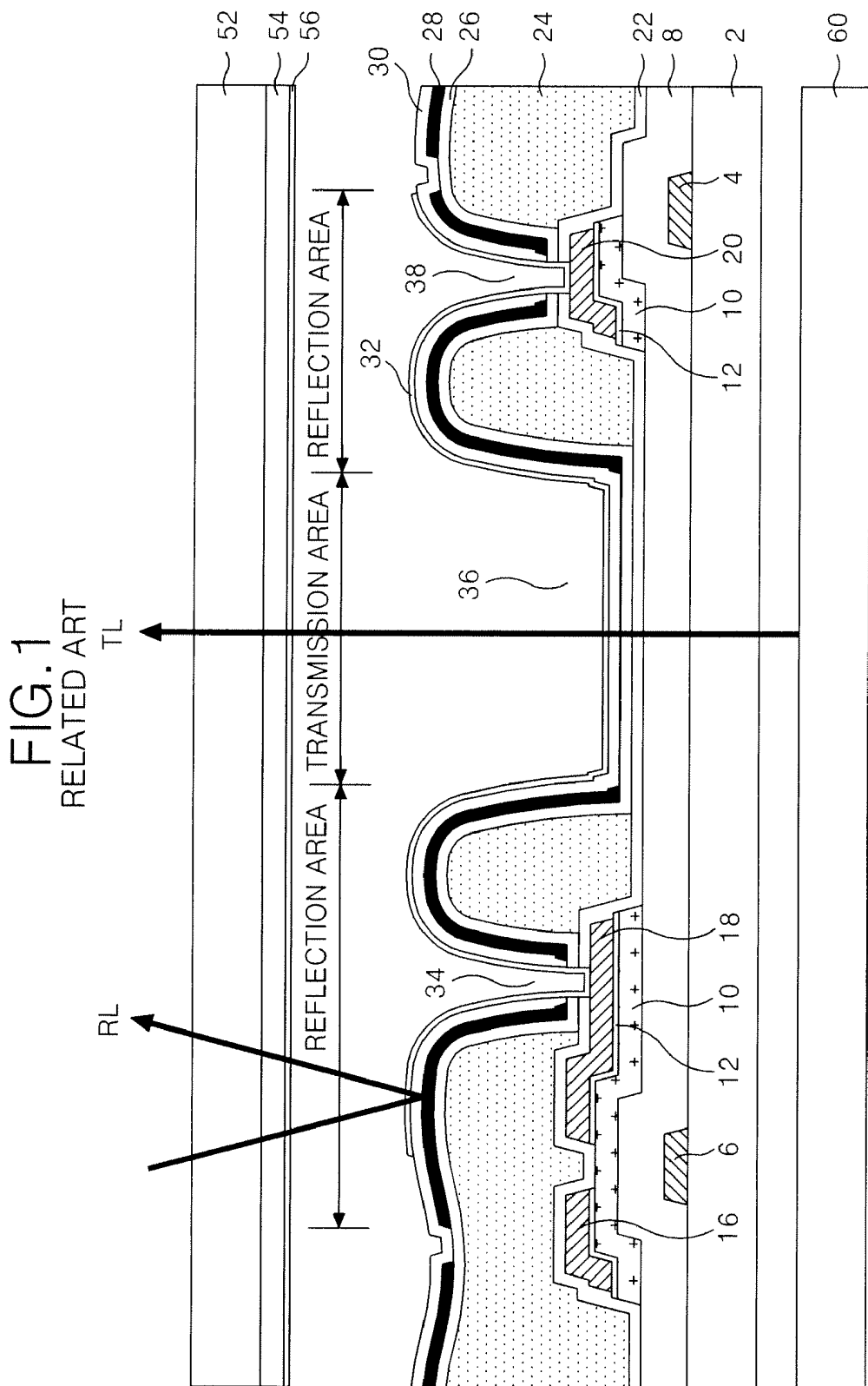


FIG. 2A
RELATED ART



FIG. 2B
RELATED ART

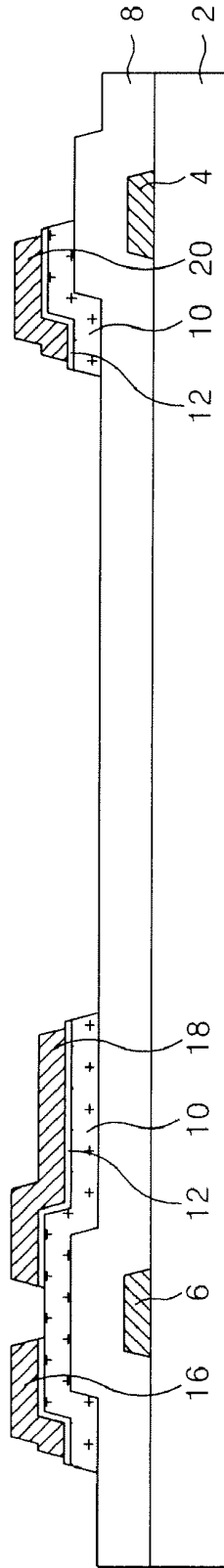


FIG. 2C
RELATED ART

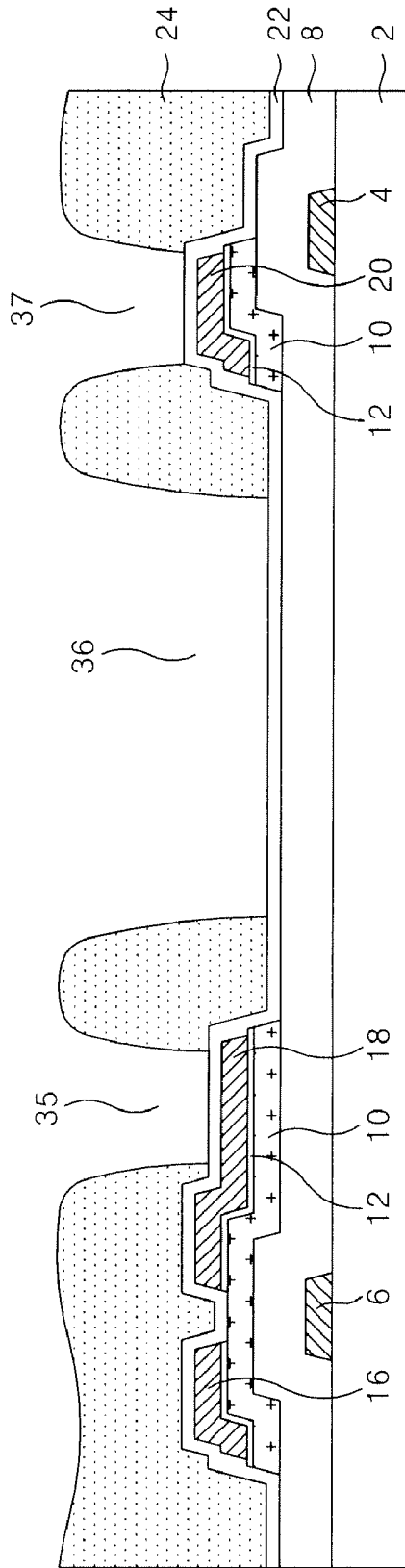


FIG. 2D
RELATED ART

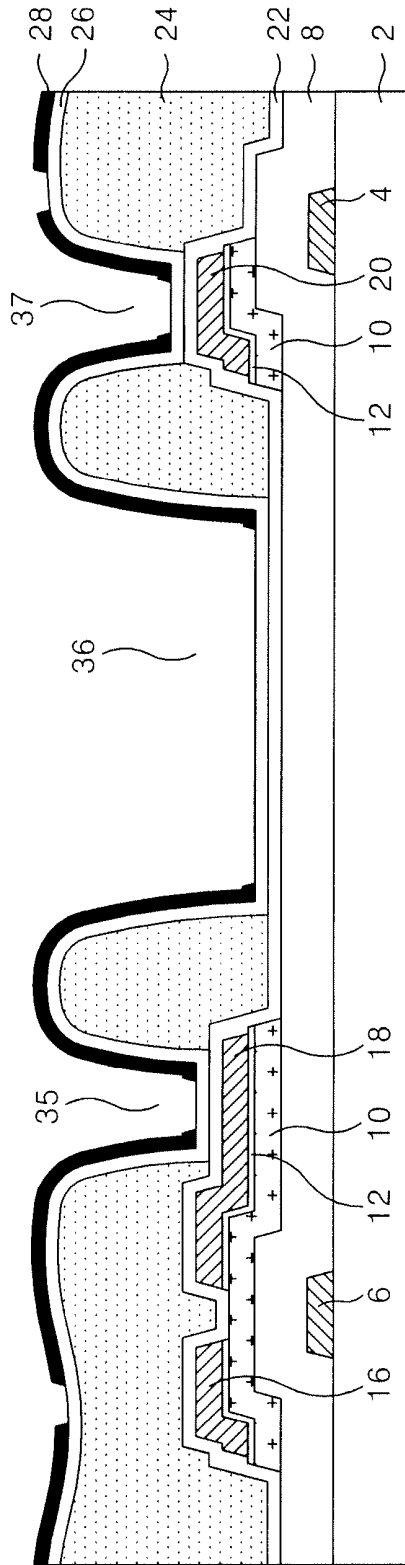


FIG. 2E
RELATED ART

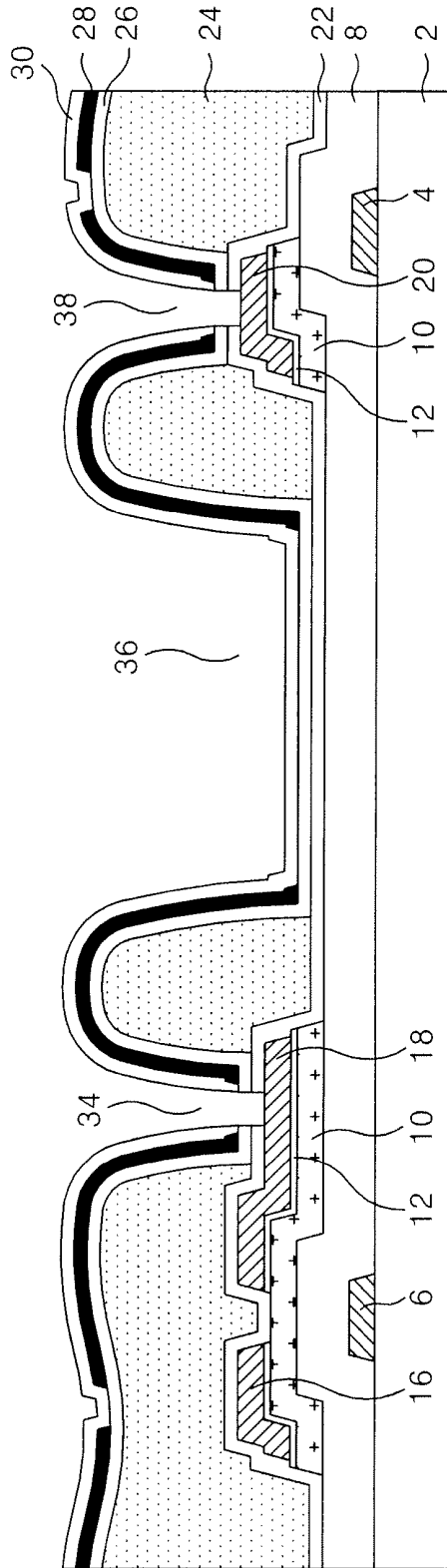
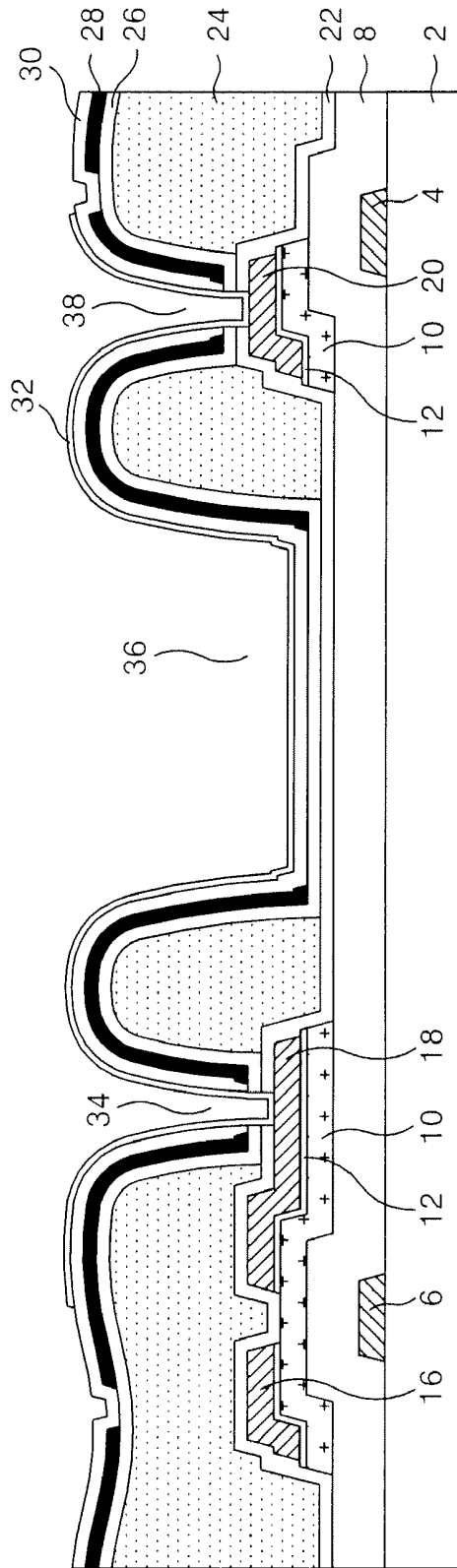


FIG. 2F
RELATED ART



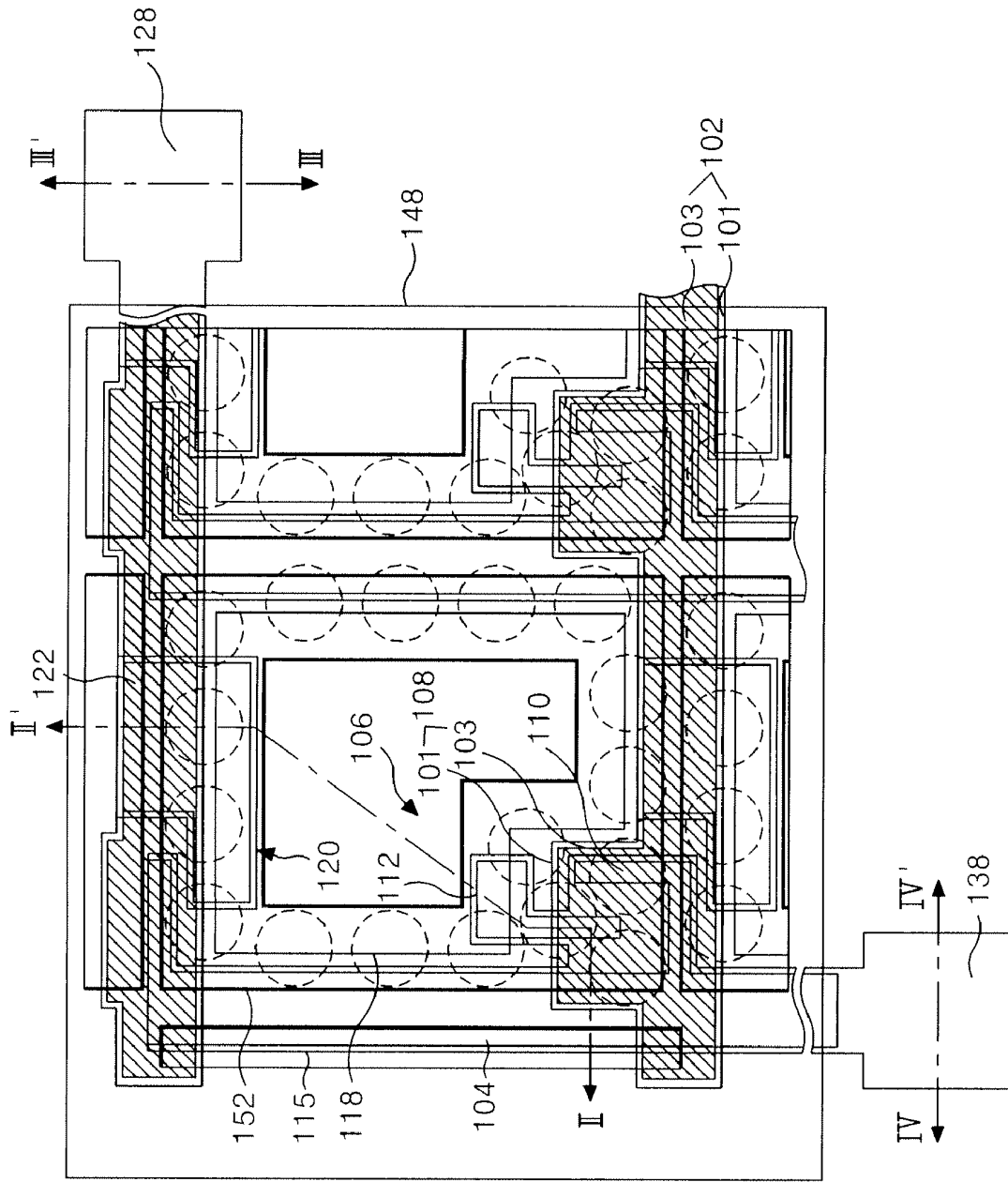
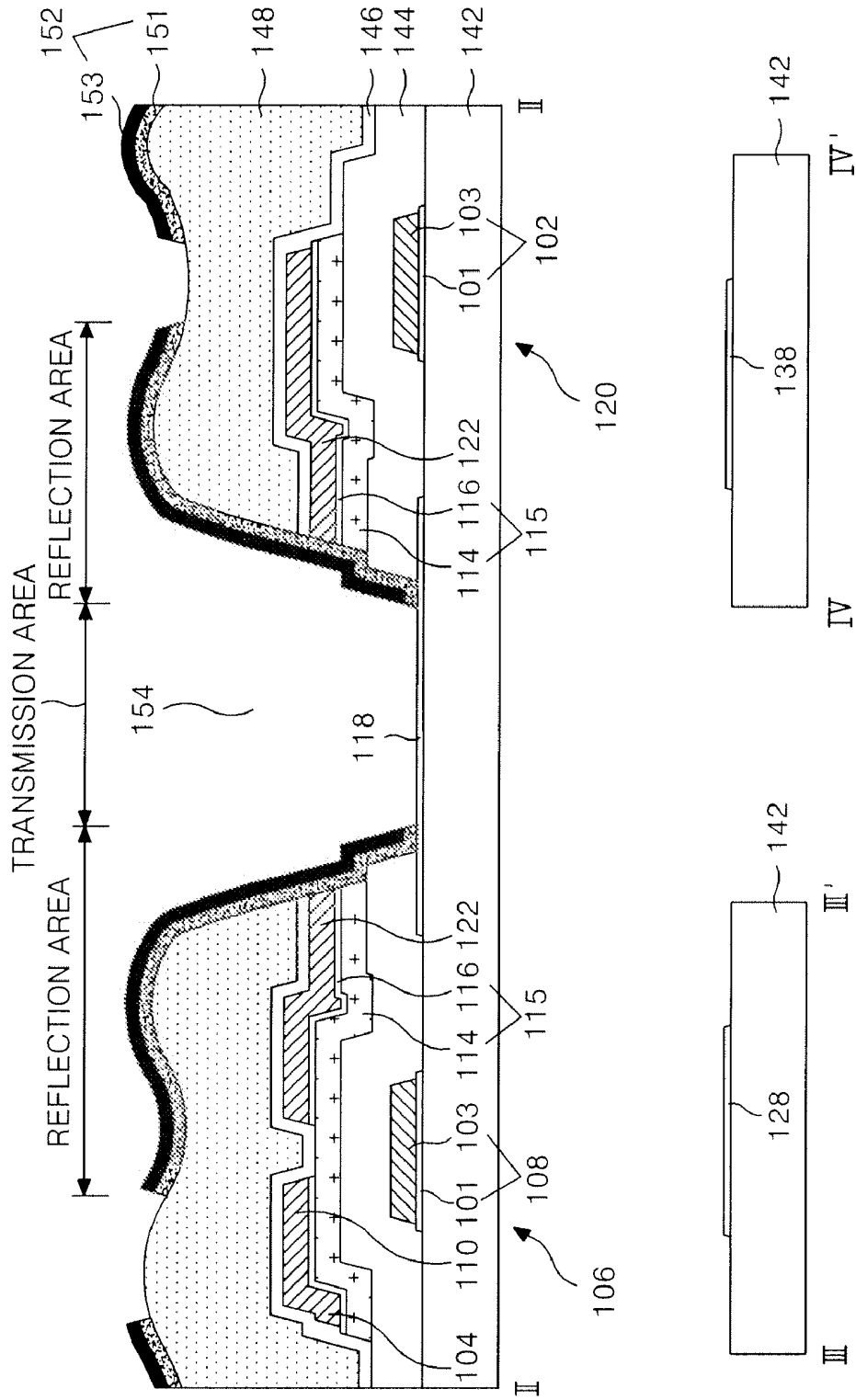


FIG. 3

FIG. 4



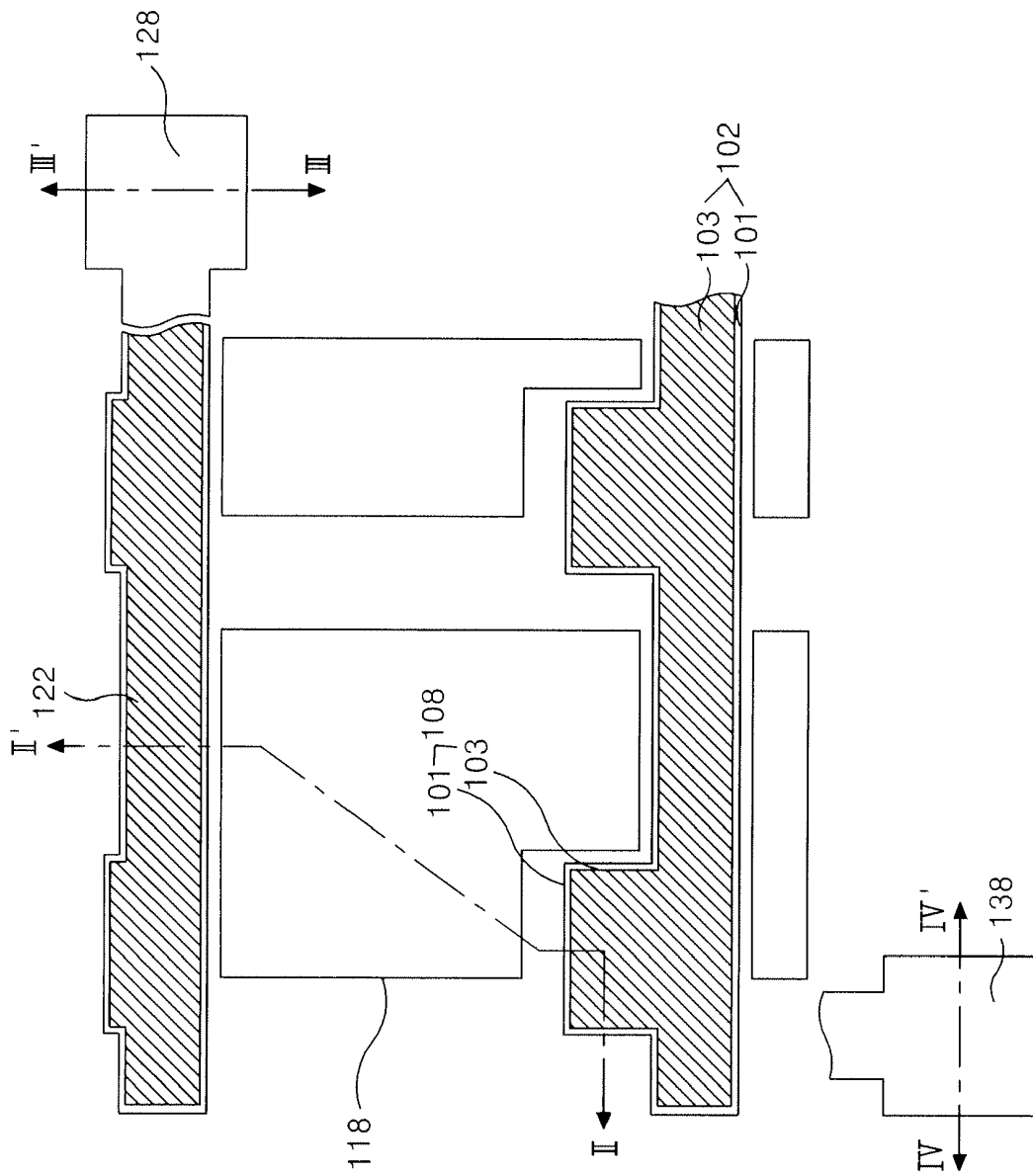


FIG. 5A

FIG. 5B

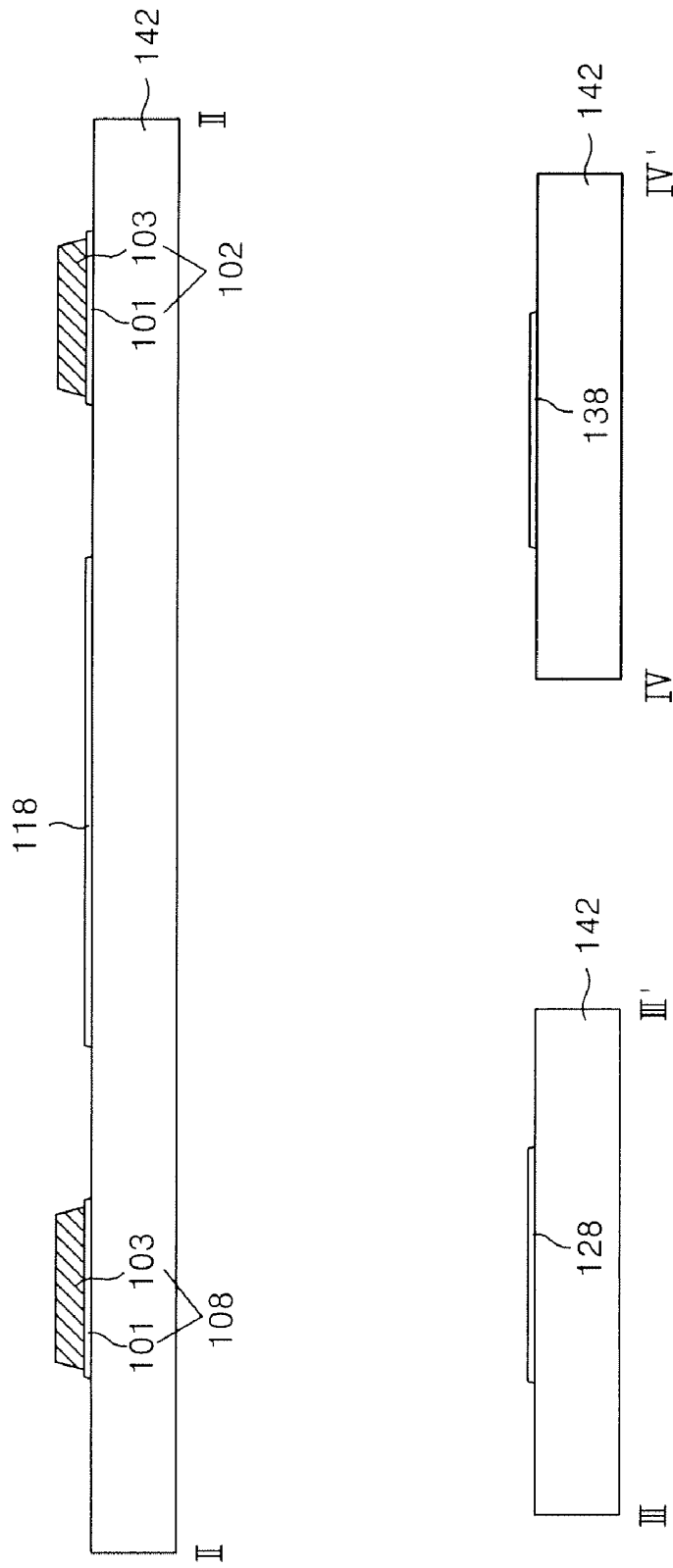


FIG. 6A

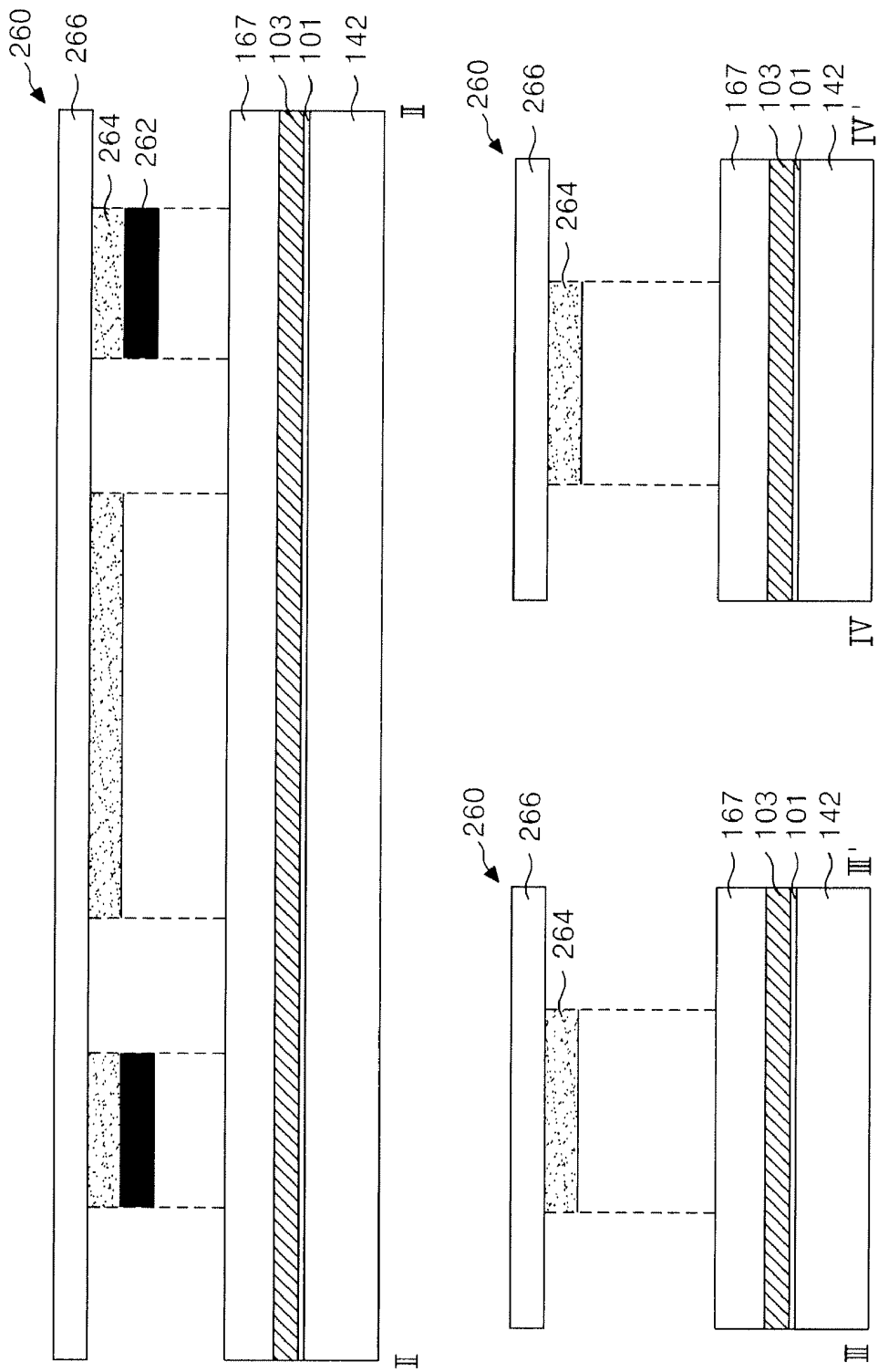


FIG. 6B

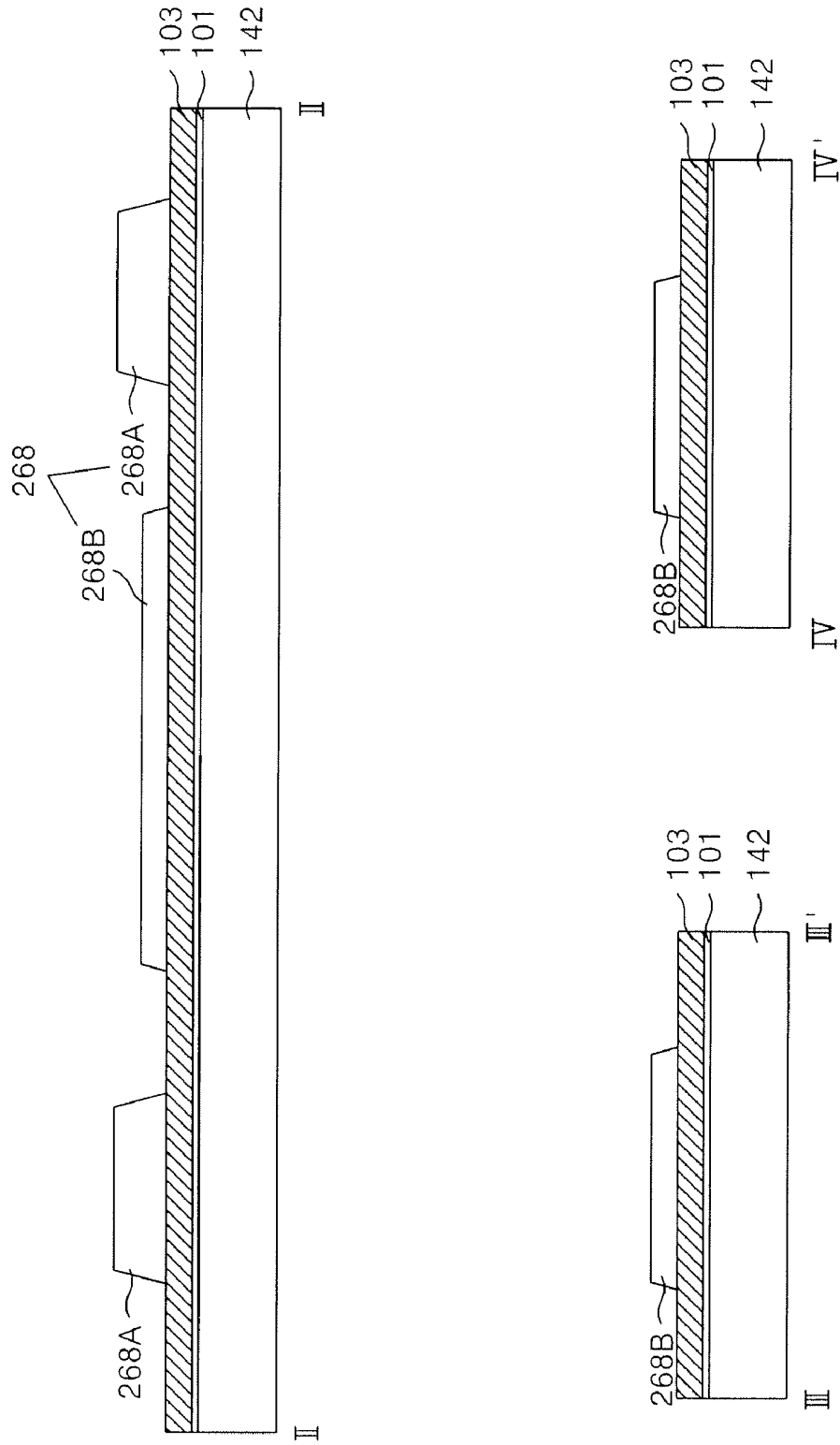


FIG. 6C

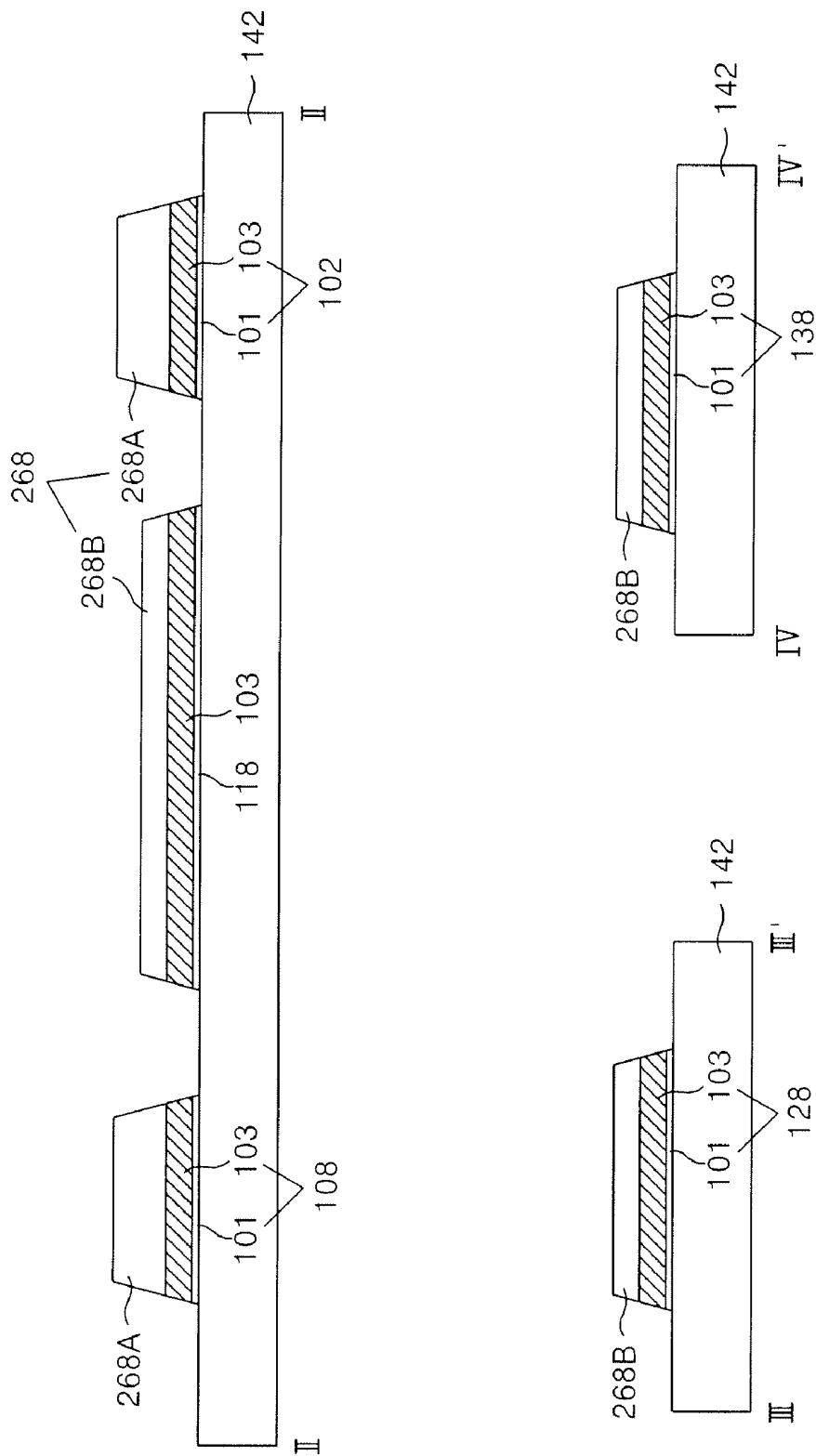


FIG. 6D

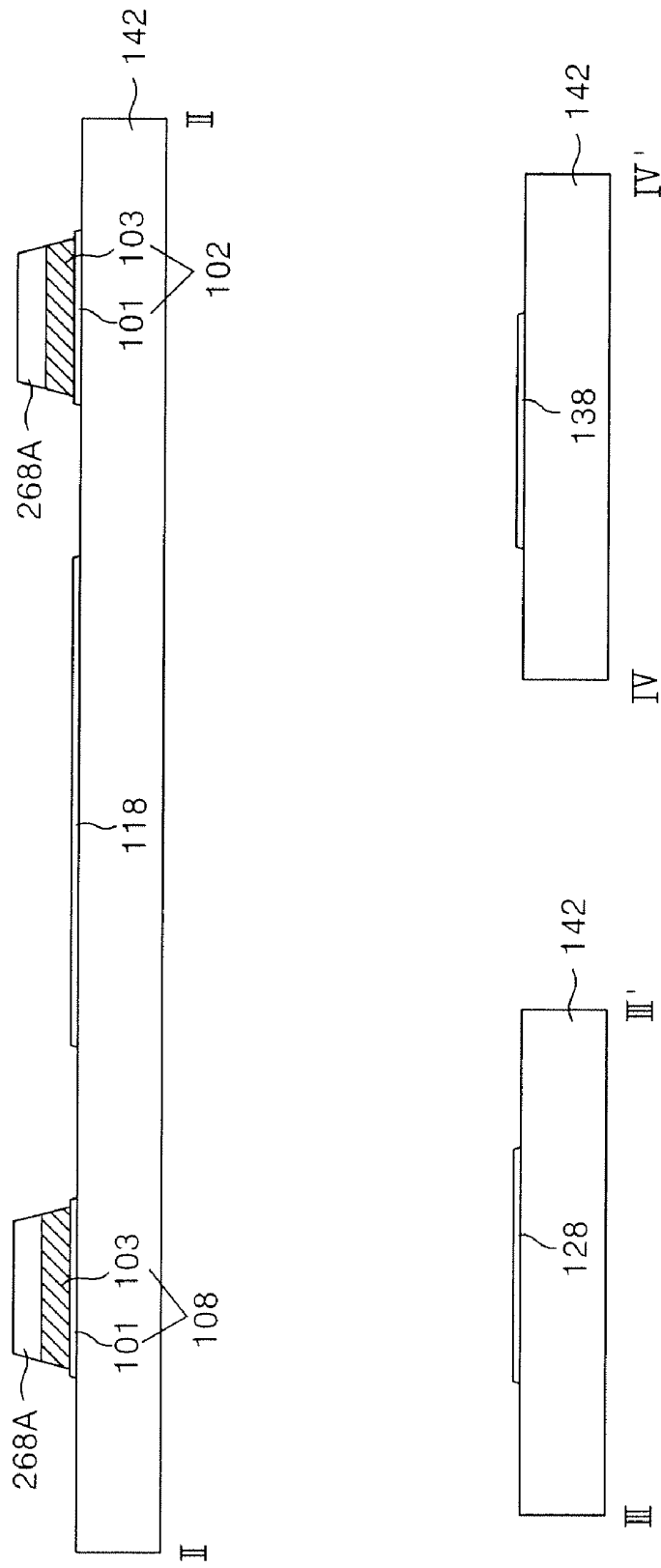
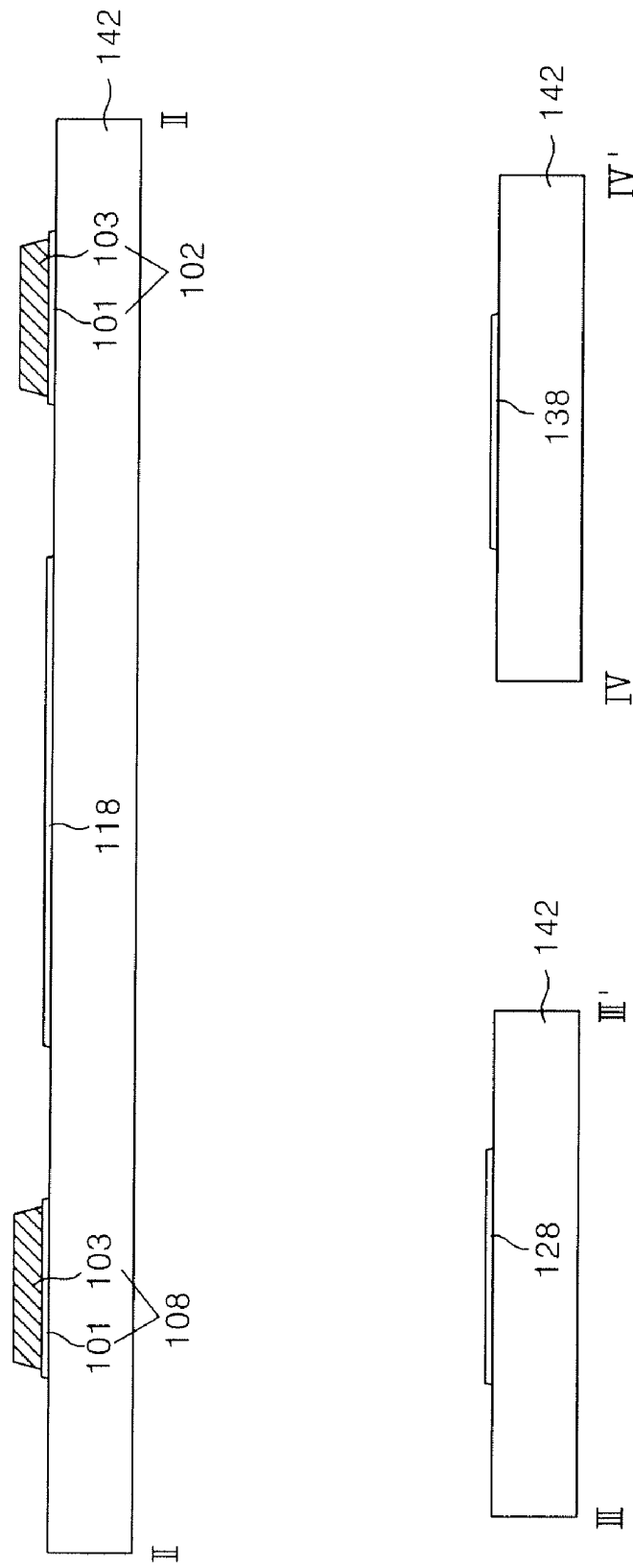


FIG. 6E



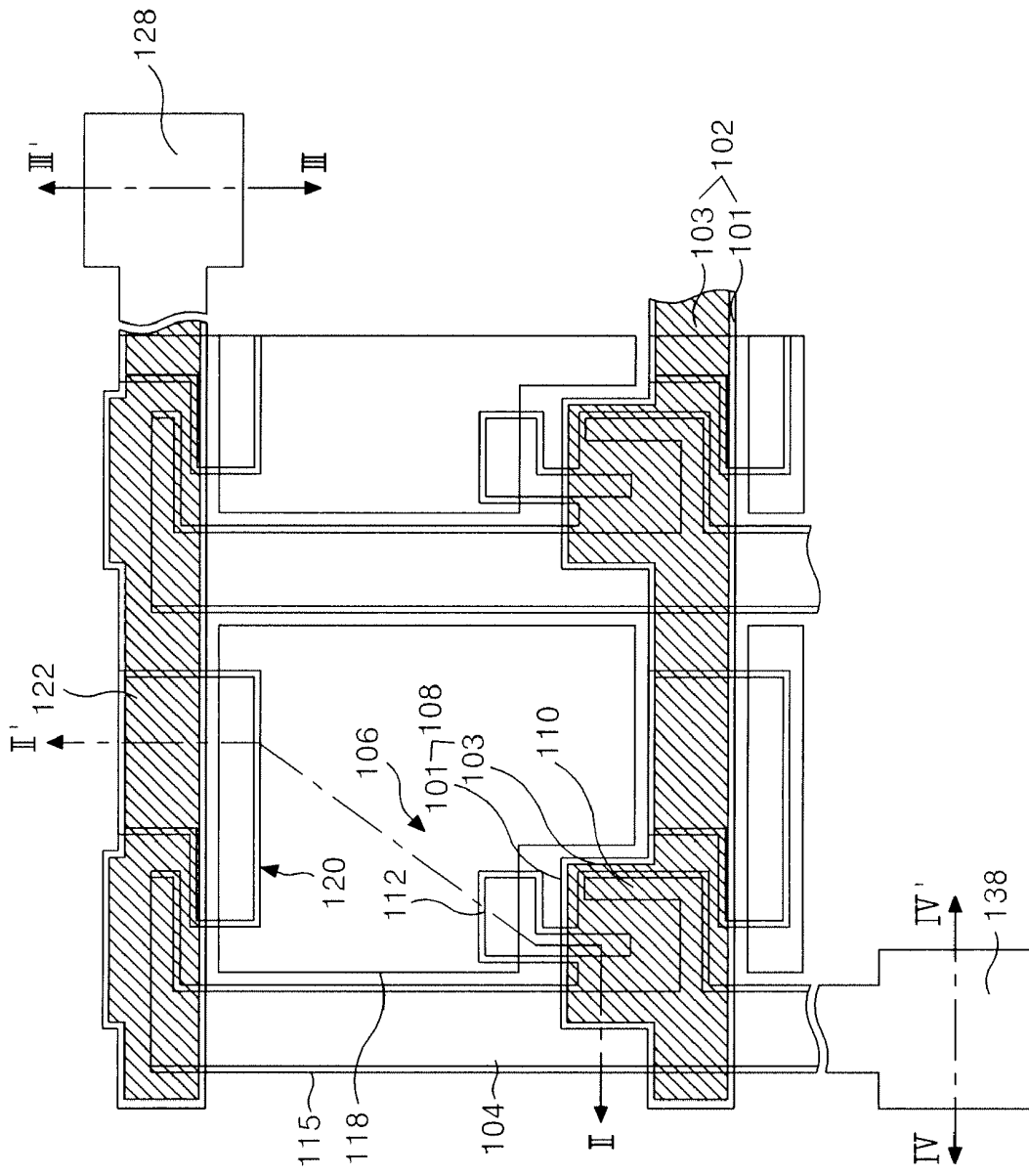


FIG. 7A

FIG. 7B

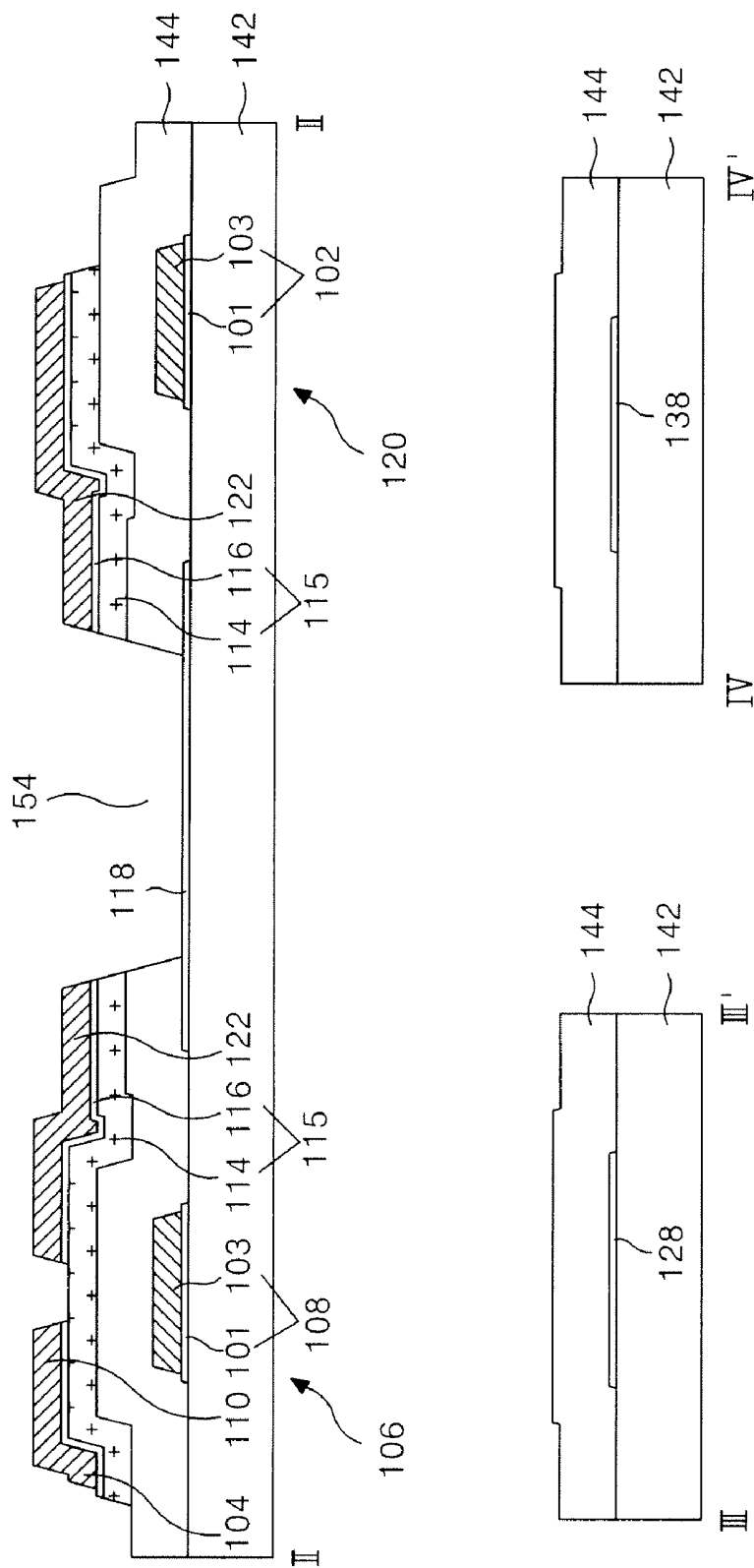


FIG. 8A

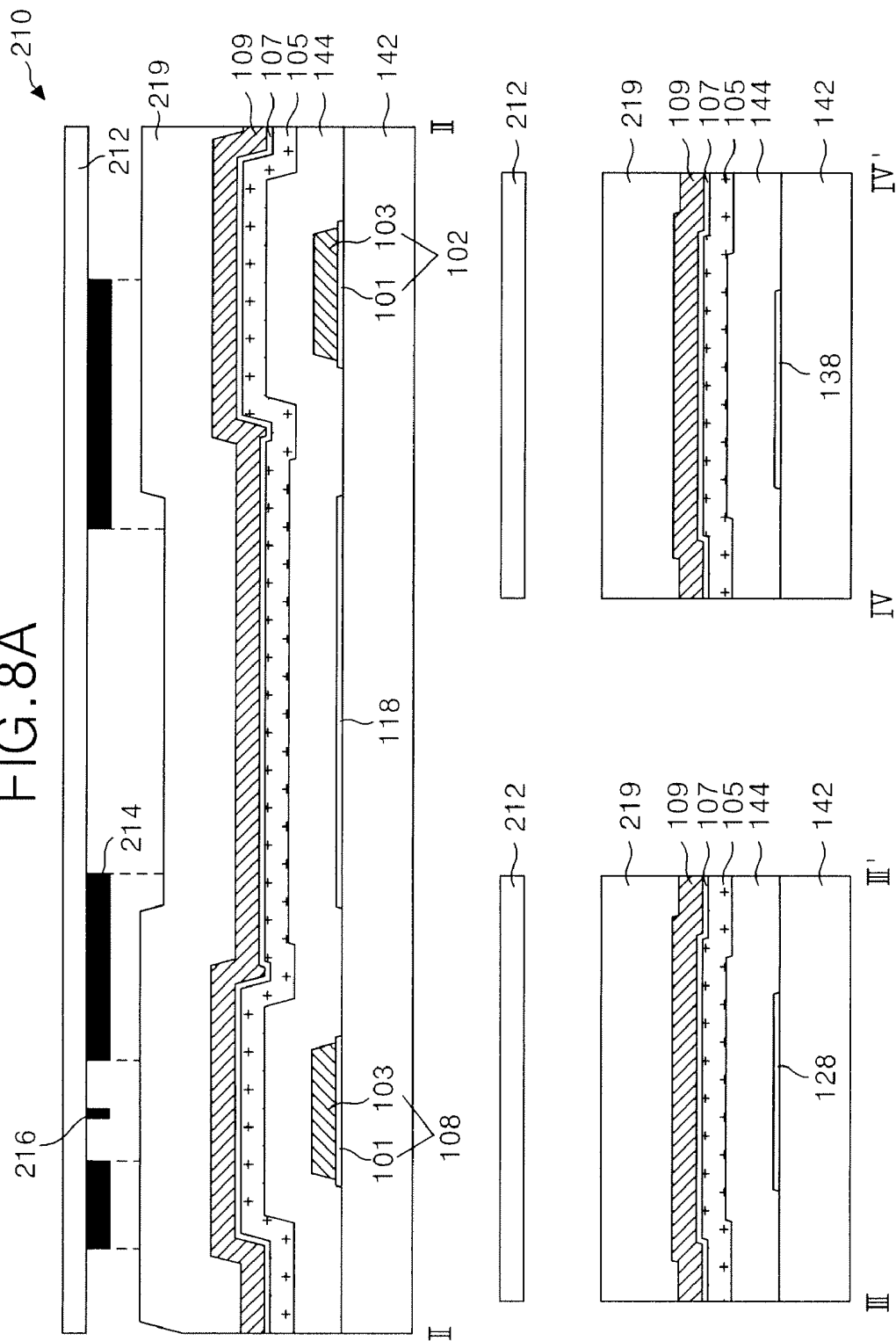


FIG. 8B

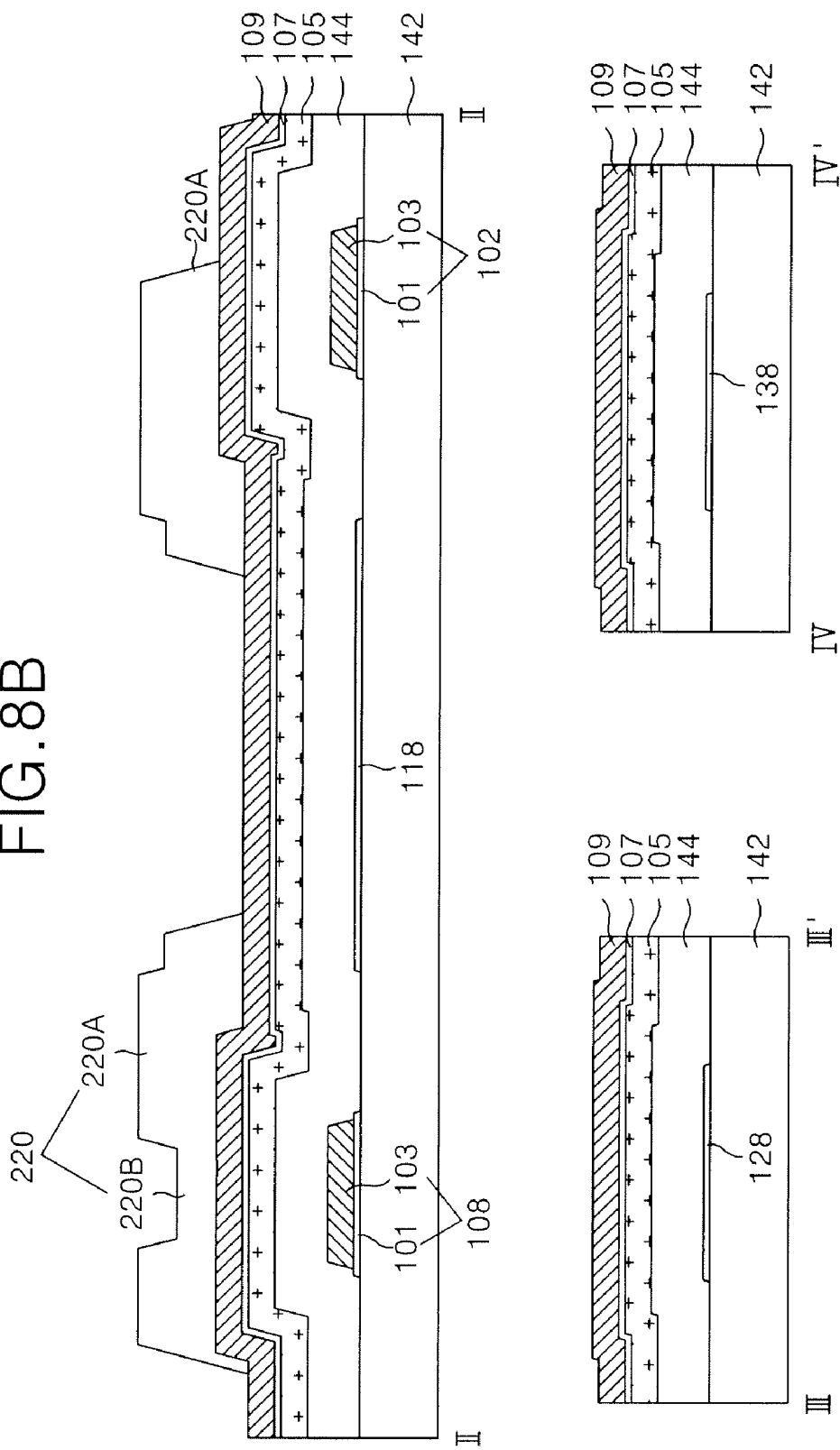


FIG. 8C

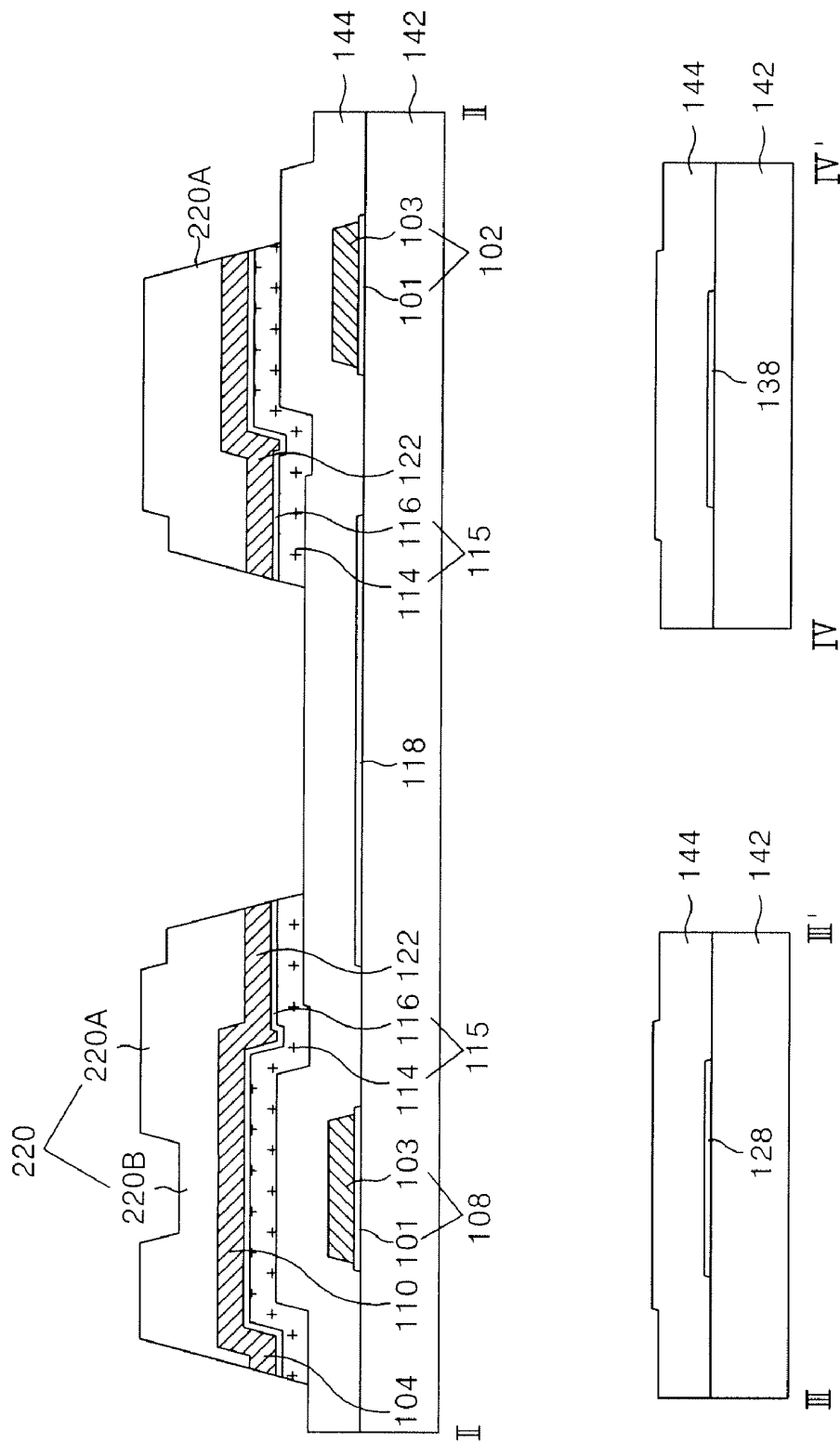


FIG. 8D

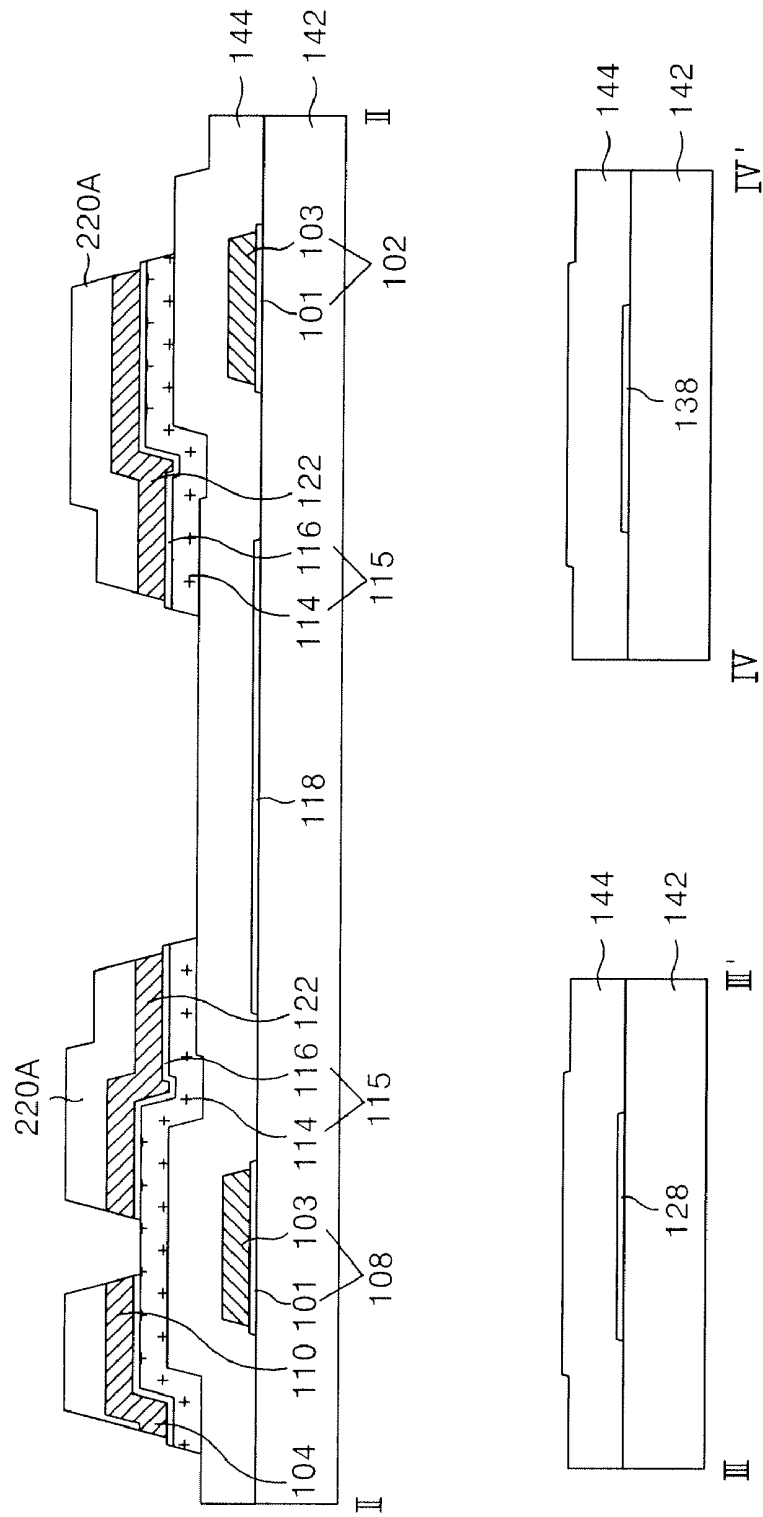
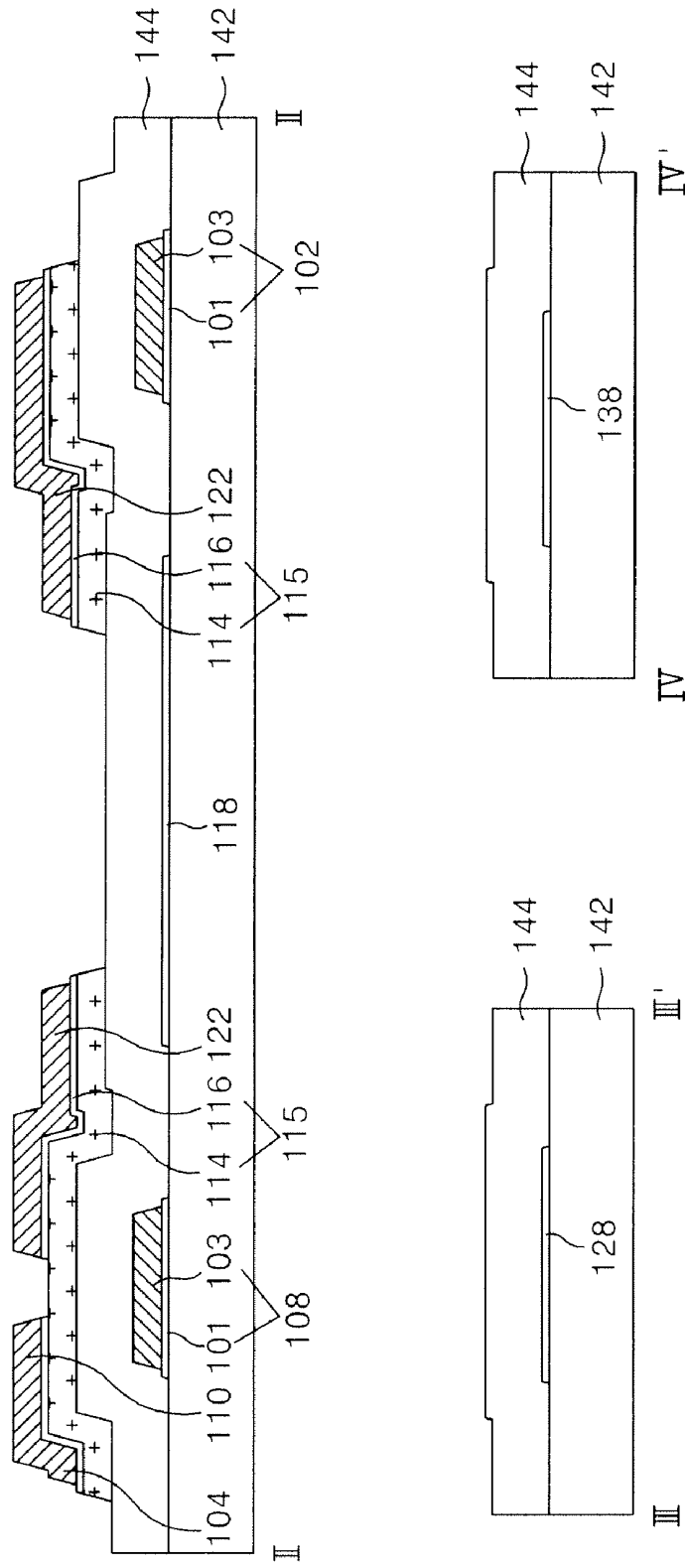


FIG. 8E



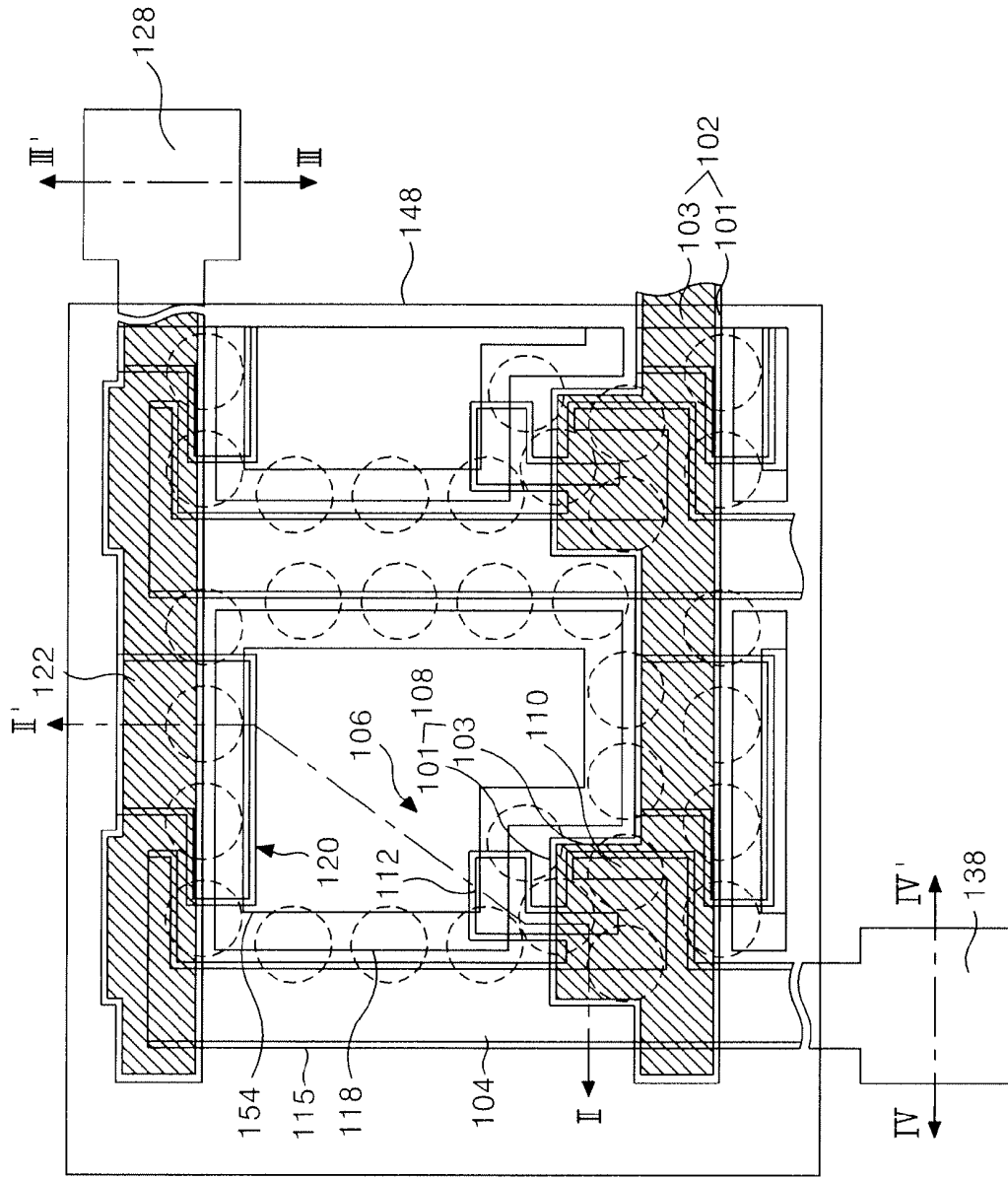


FIG. 9A

FIG. 9B

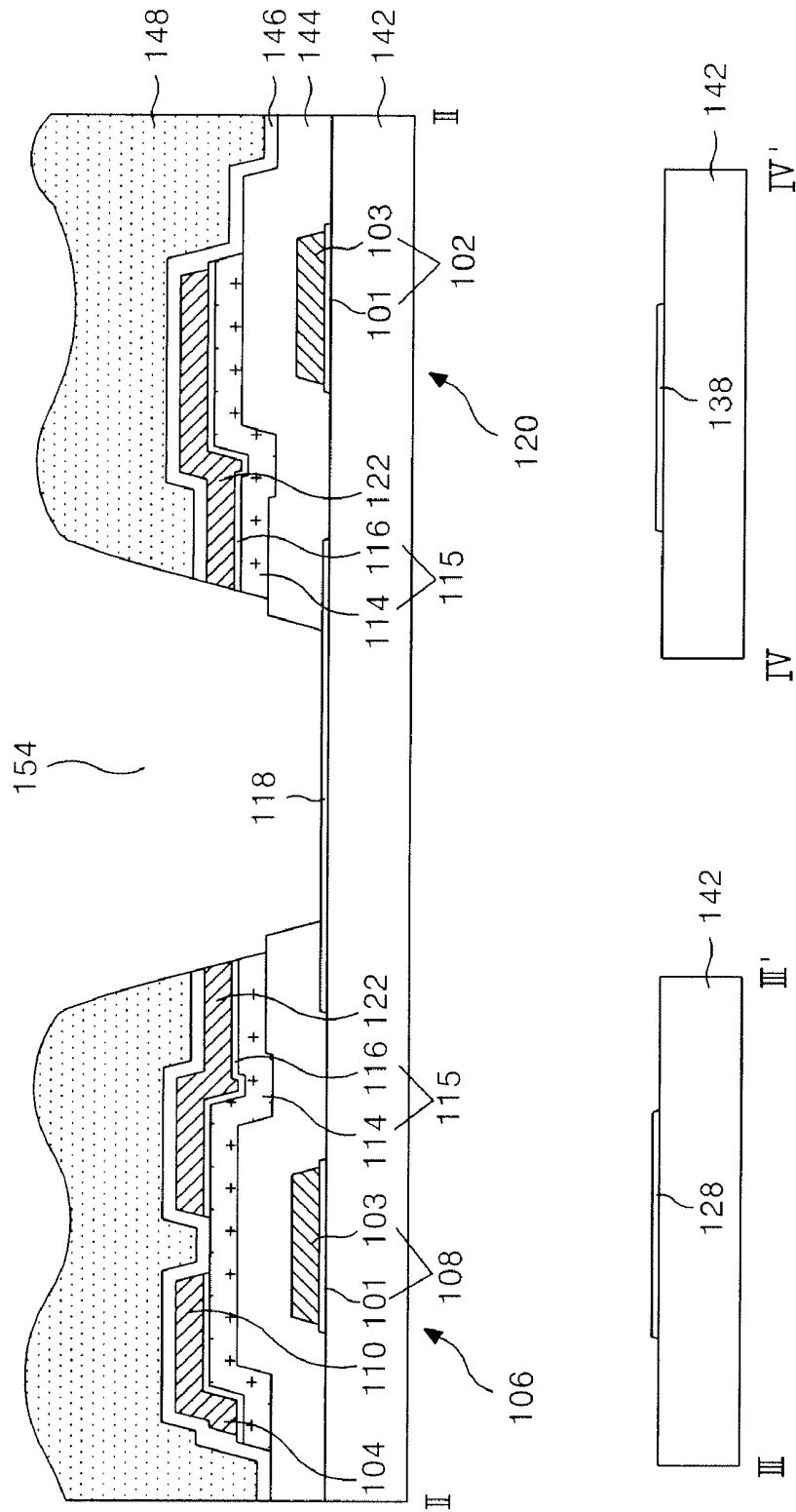


FIG. 10A

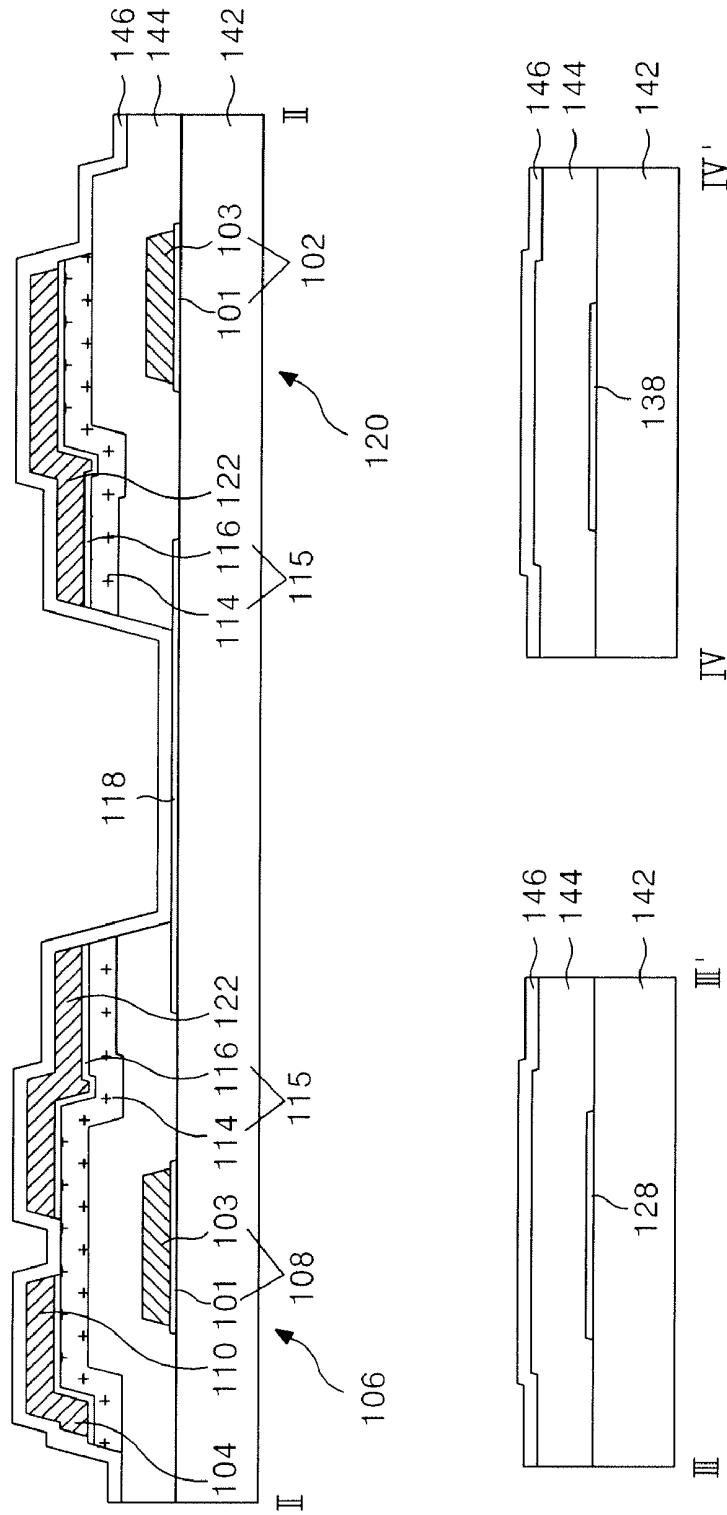
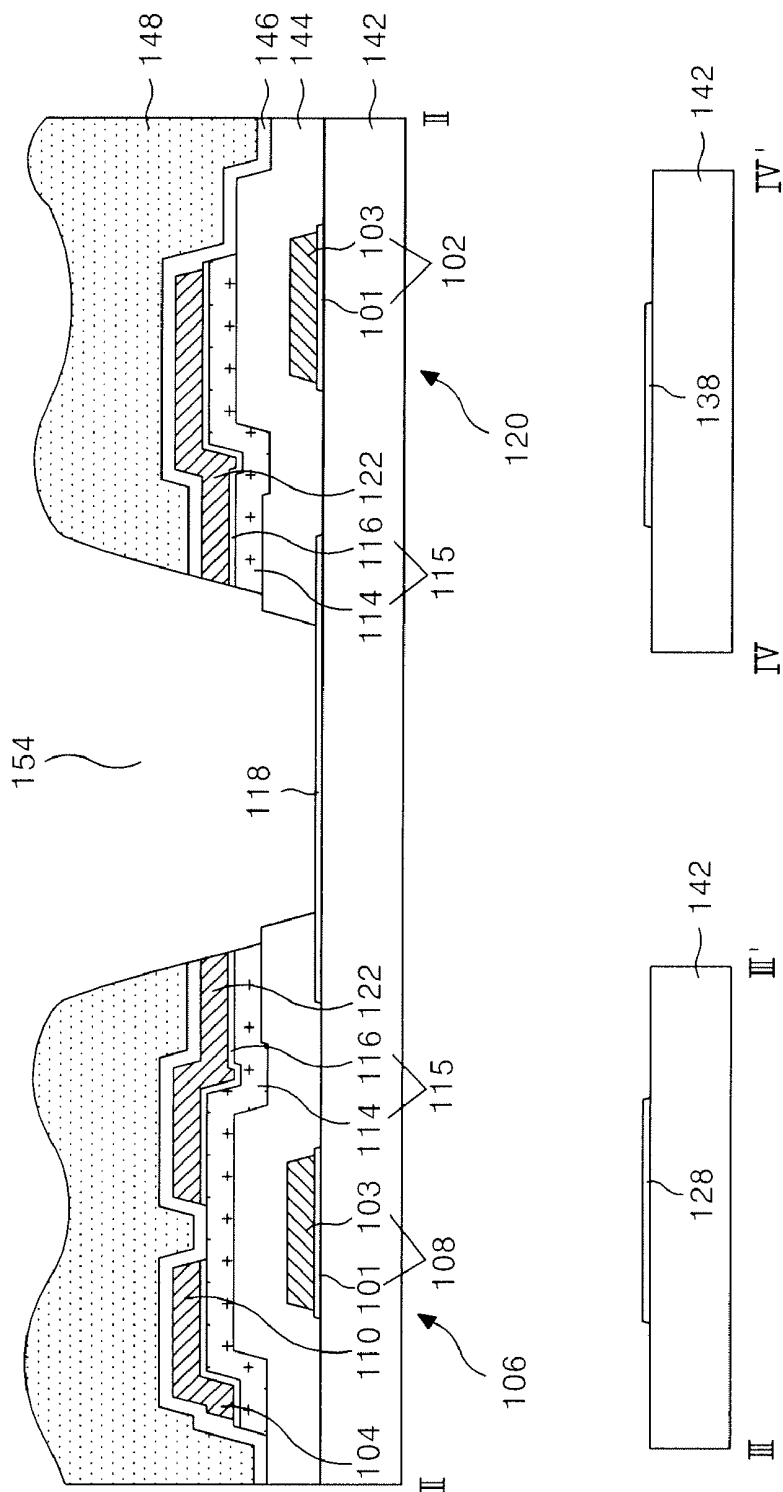


FIG. 10C



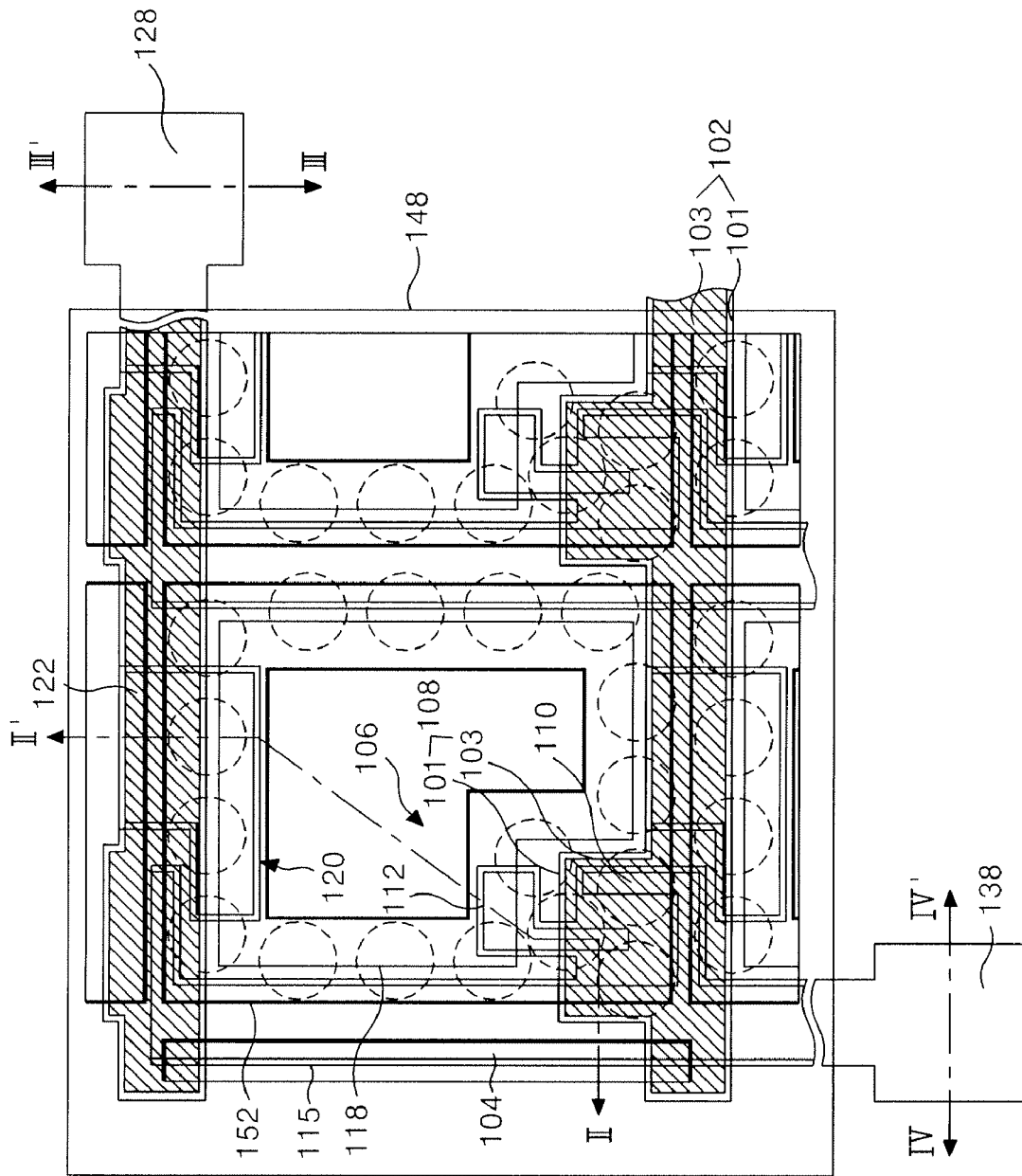


FIG. 11A

FIG. 11B

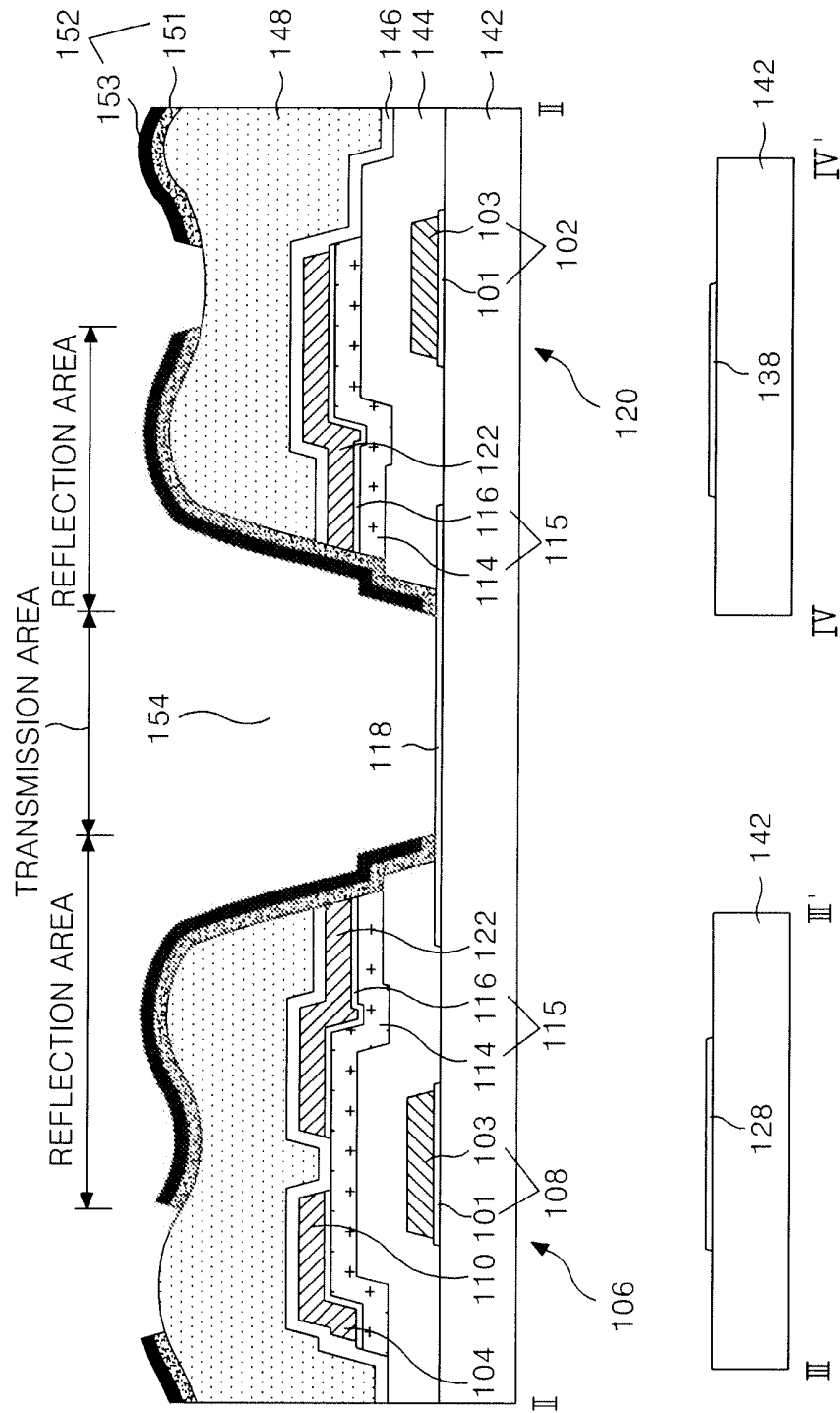


FIG. 12

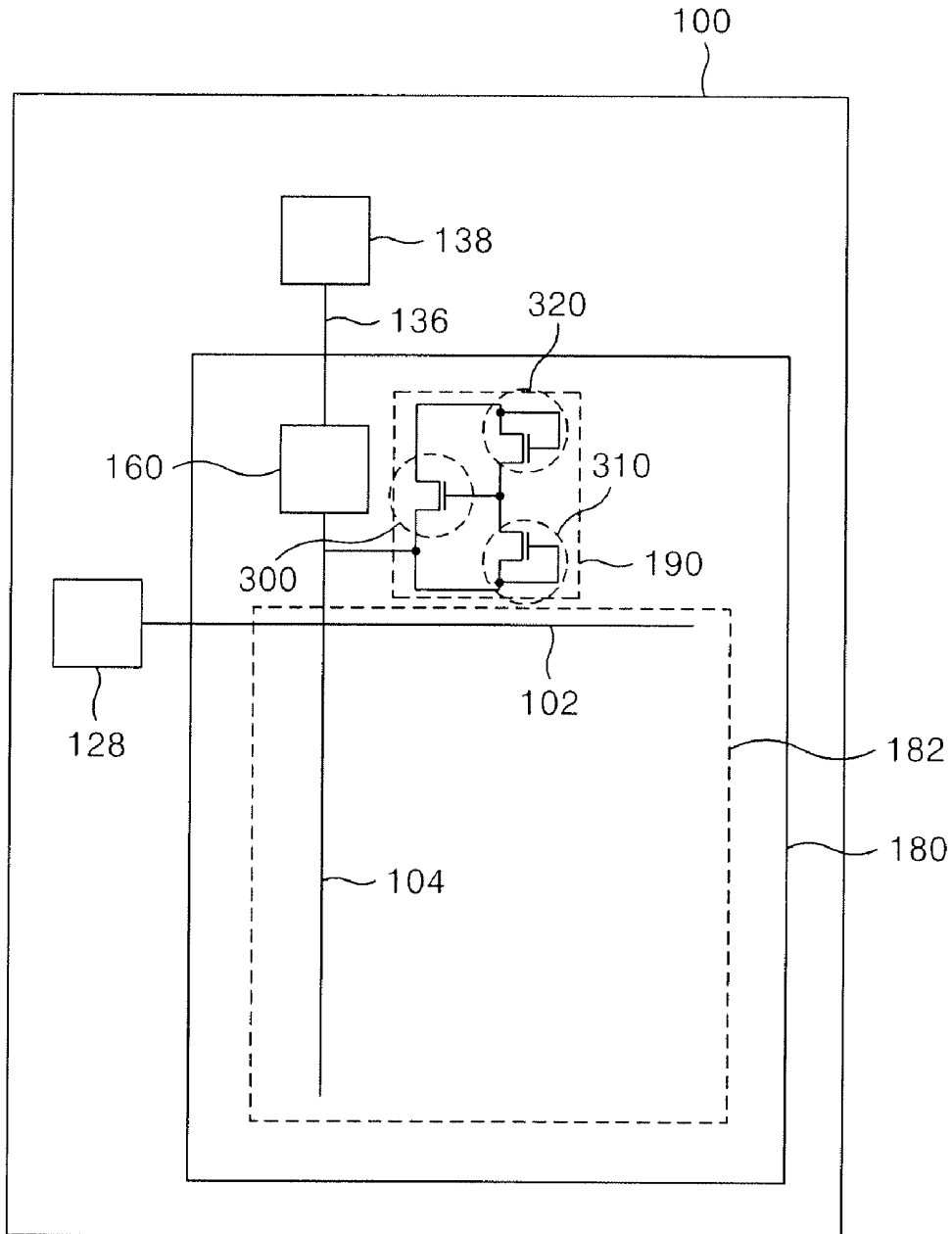


FIG. 13

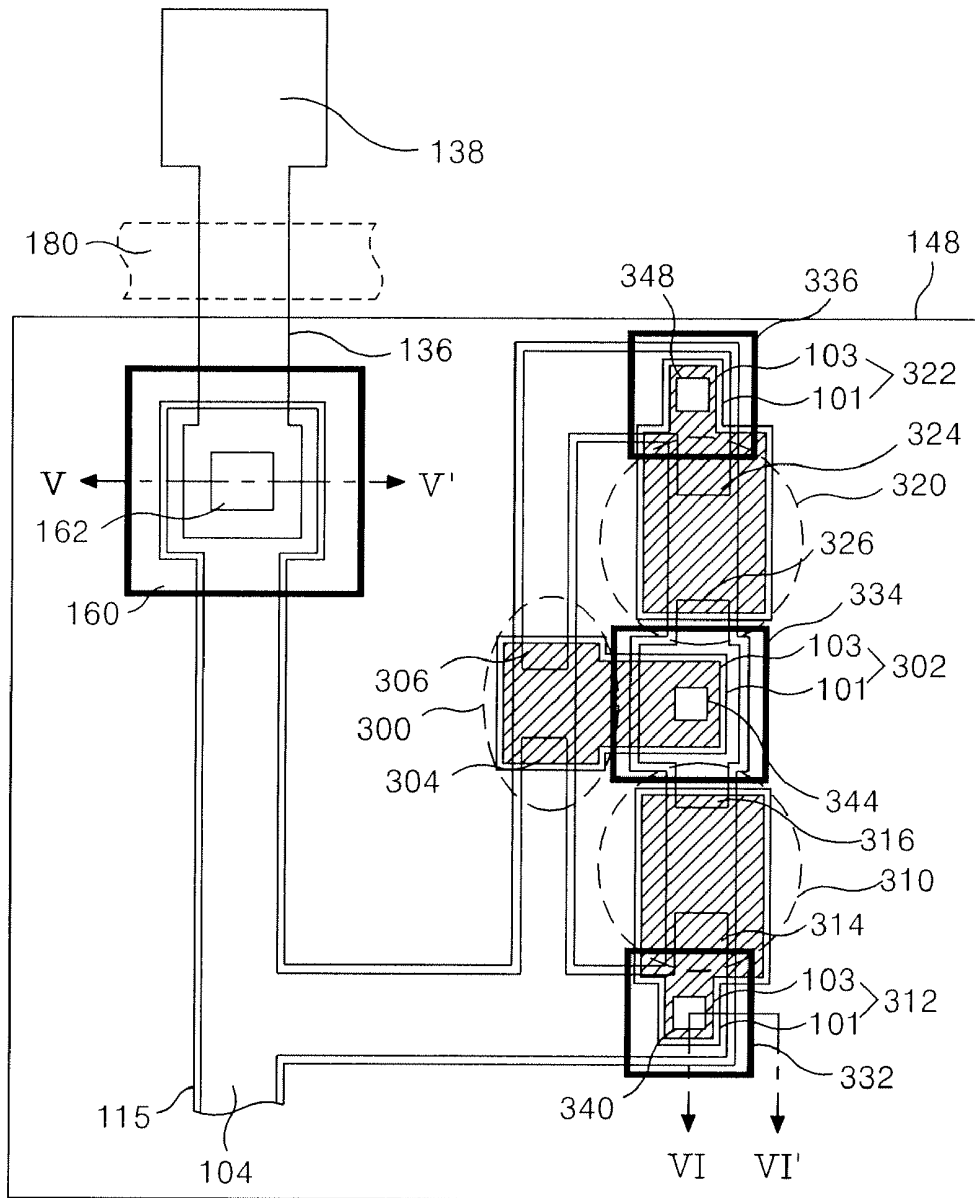


FIG. 14

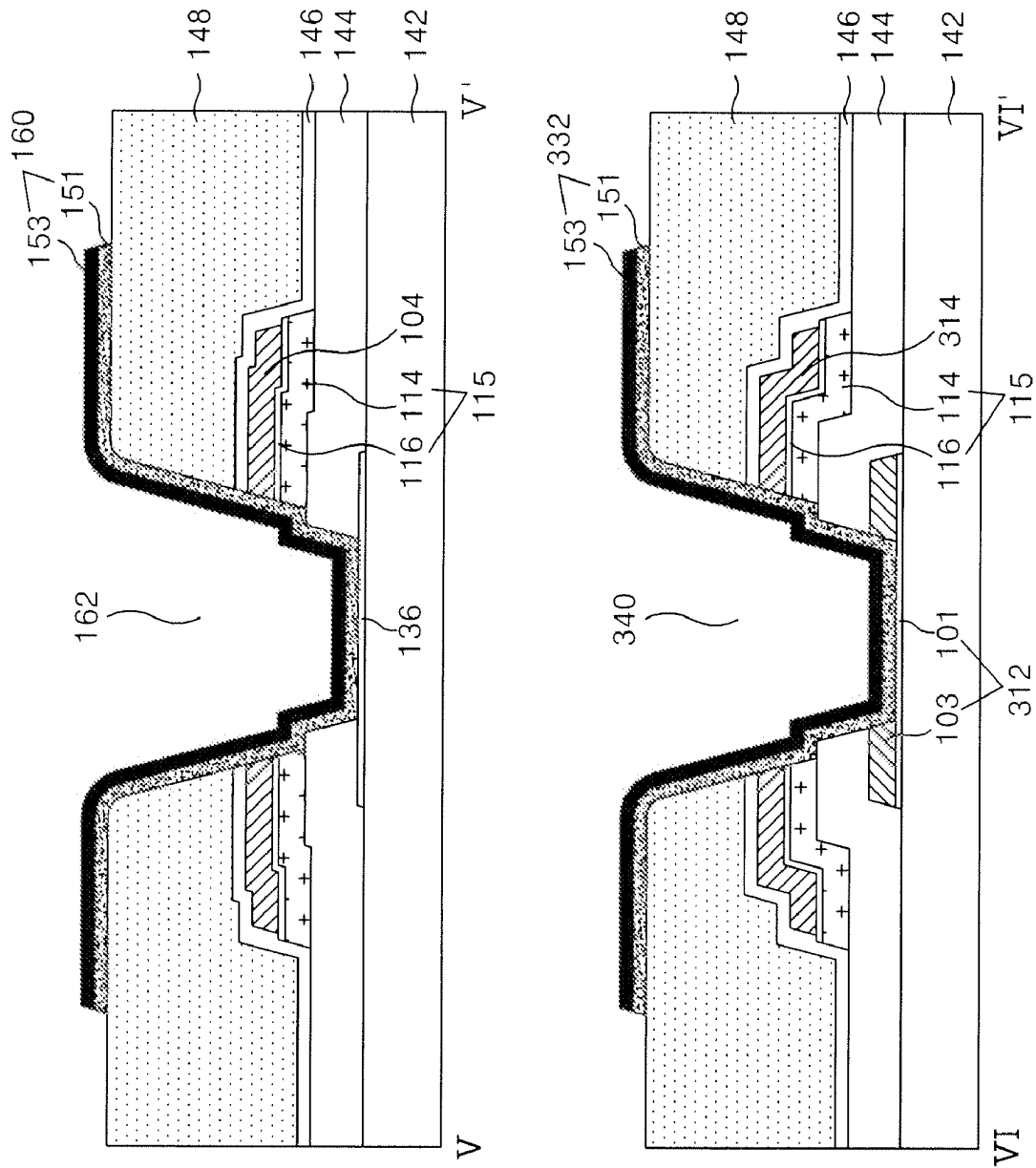


FIG. 15A

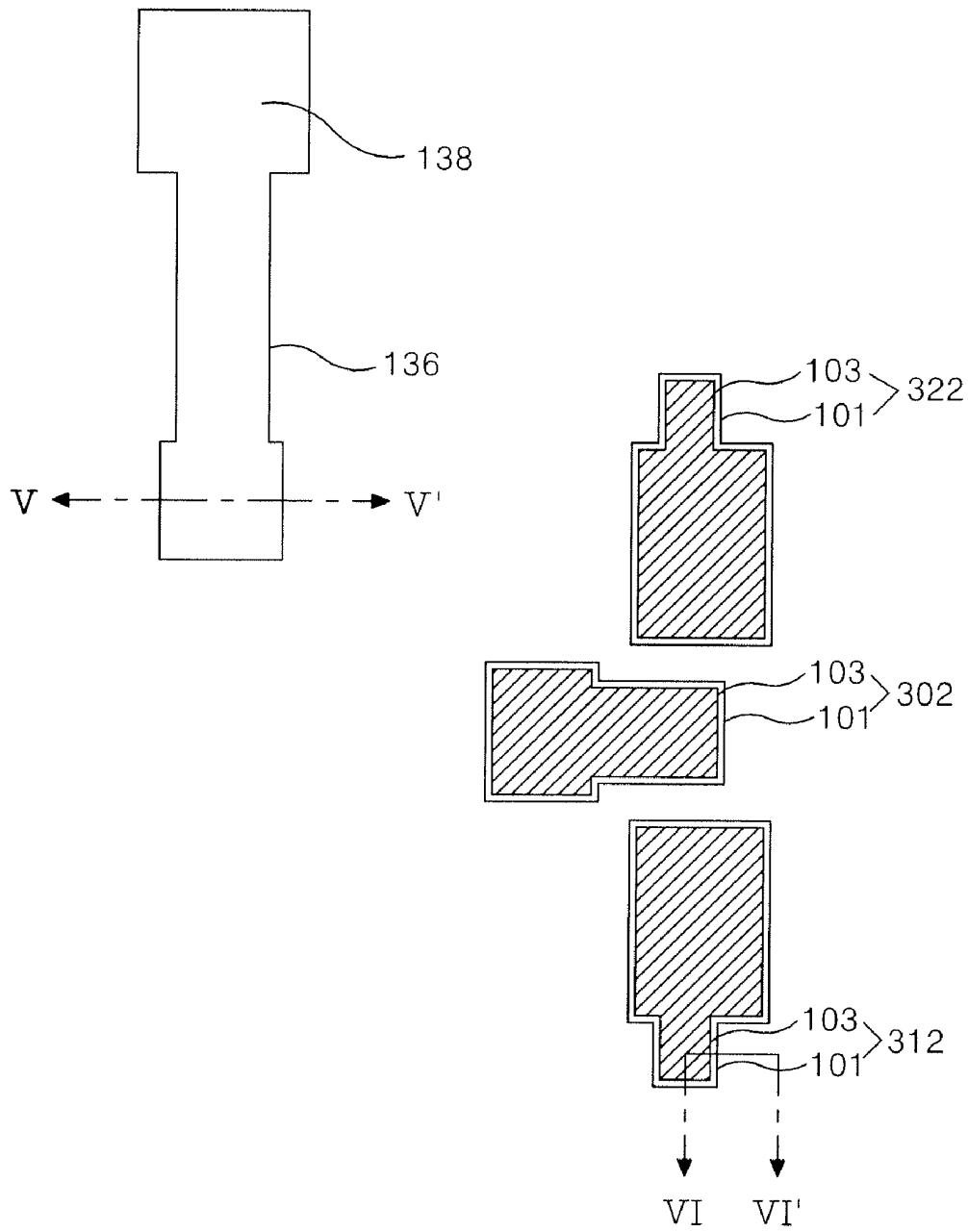


FIG. 15B

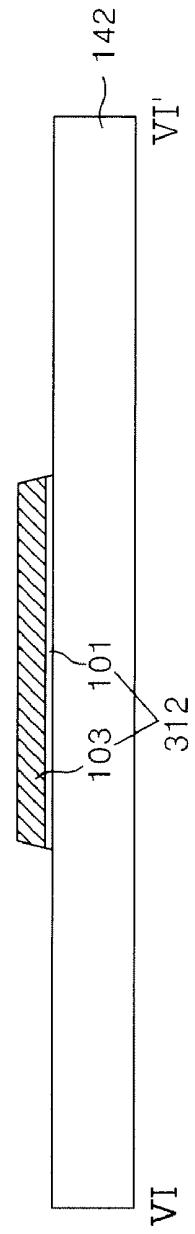
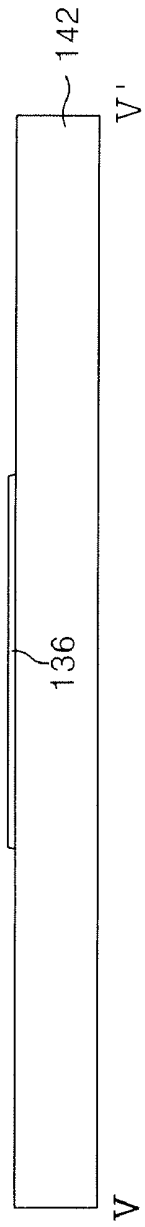


FIG. 16A

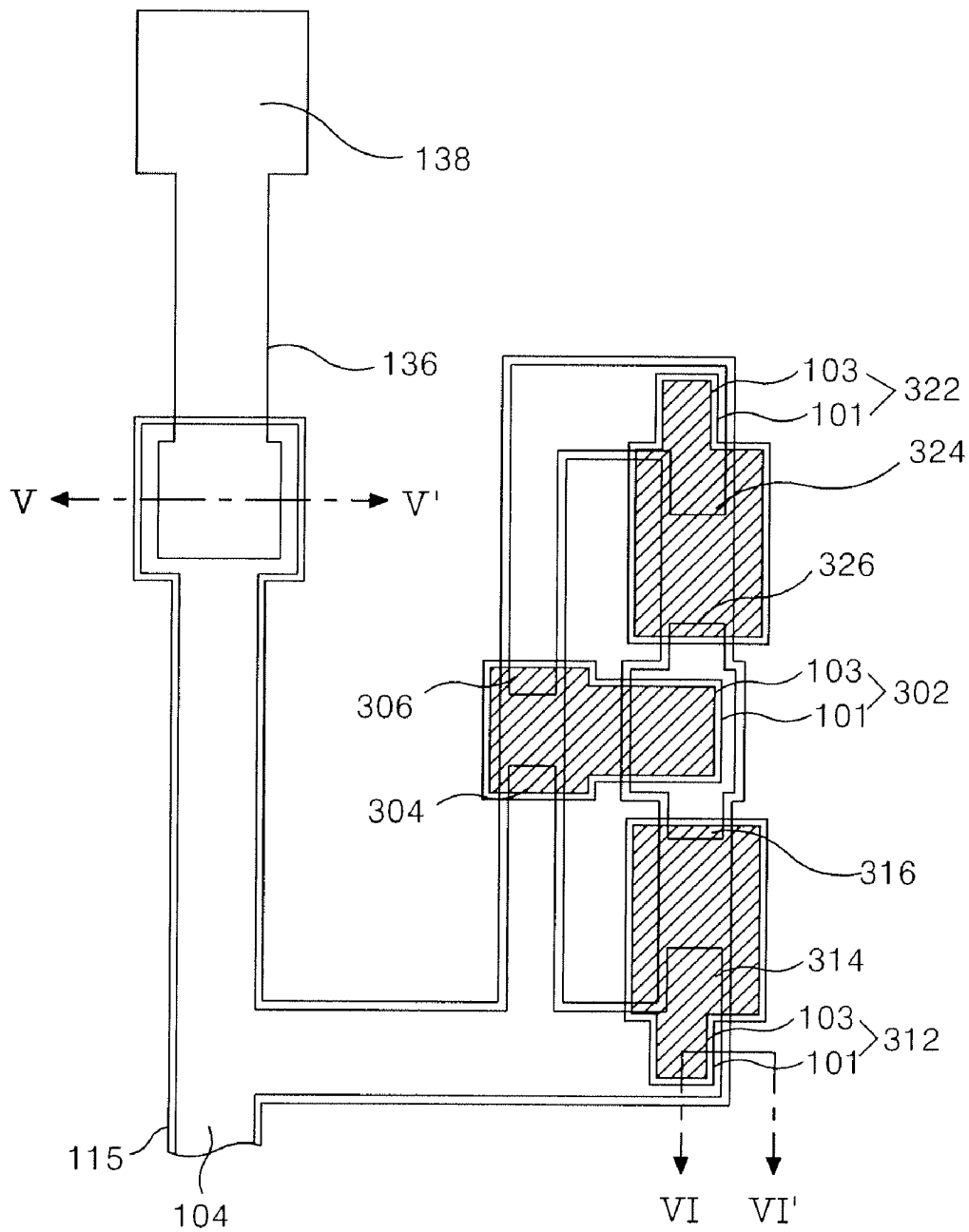


FIG. 16B

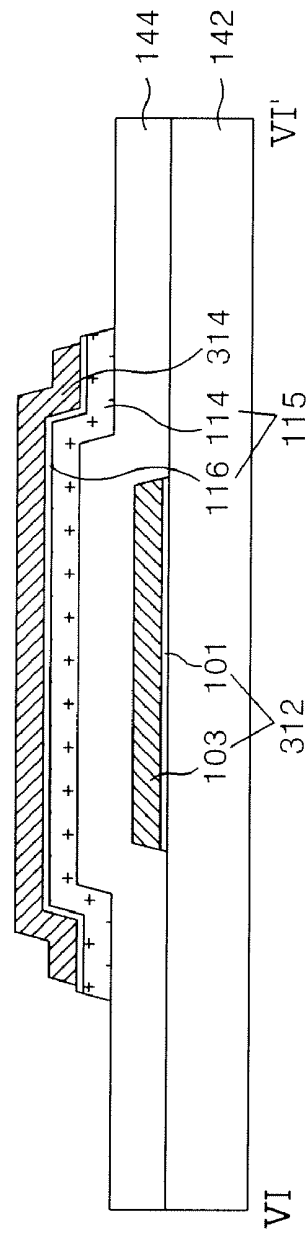
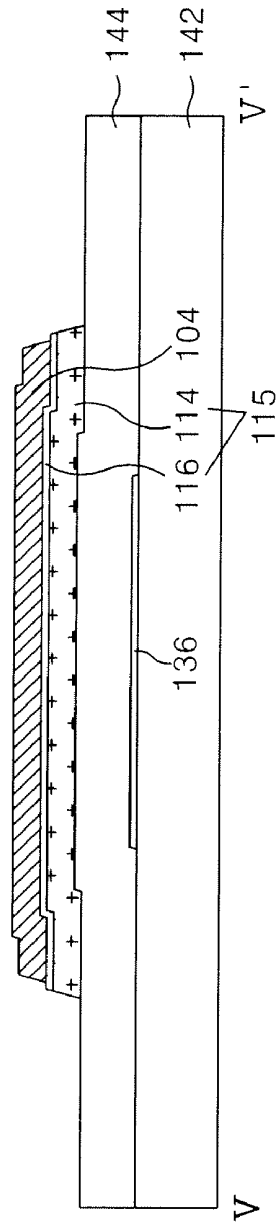


FIG. 17A

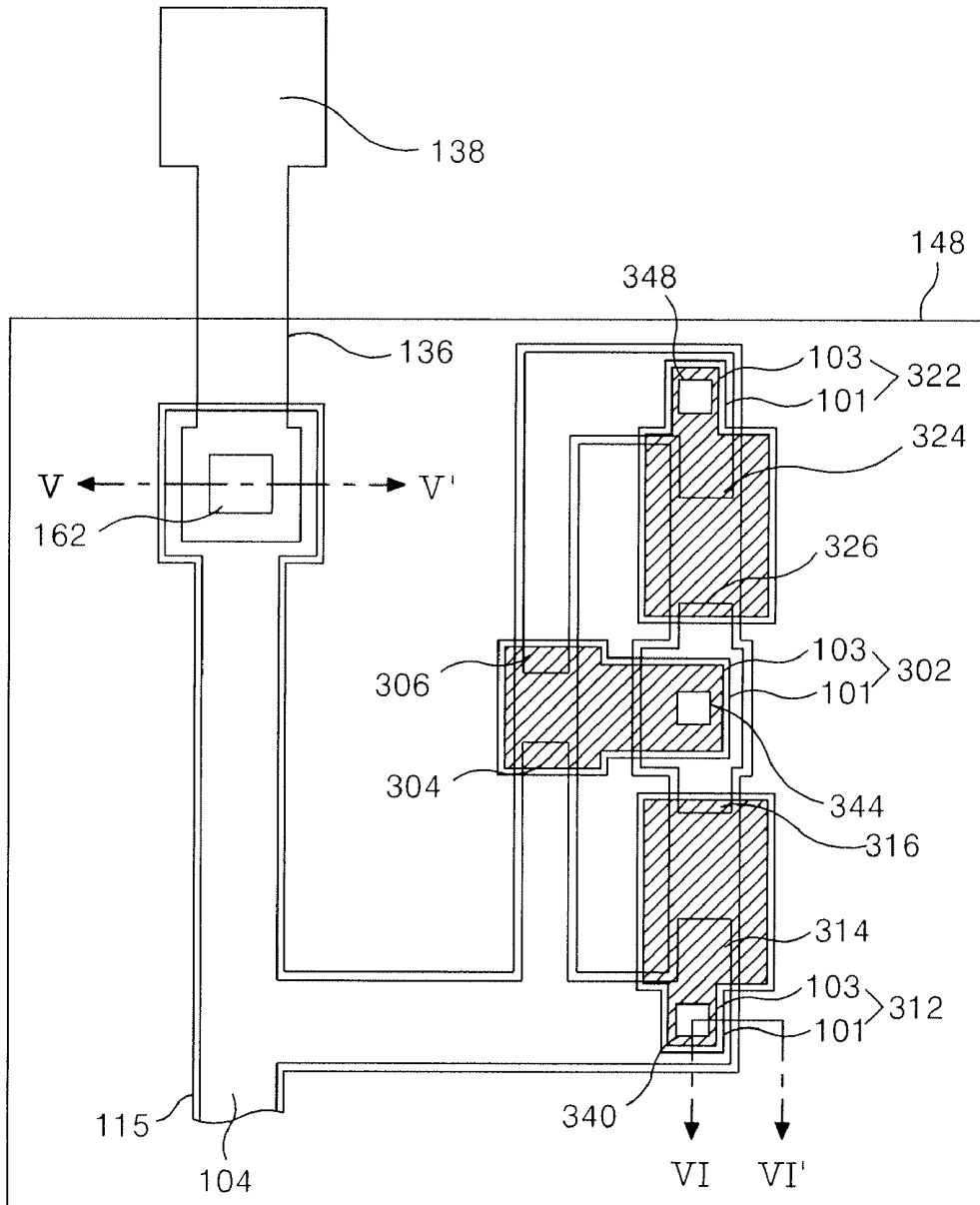


FIG. 17B

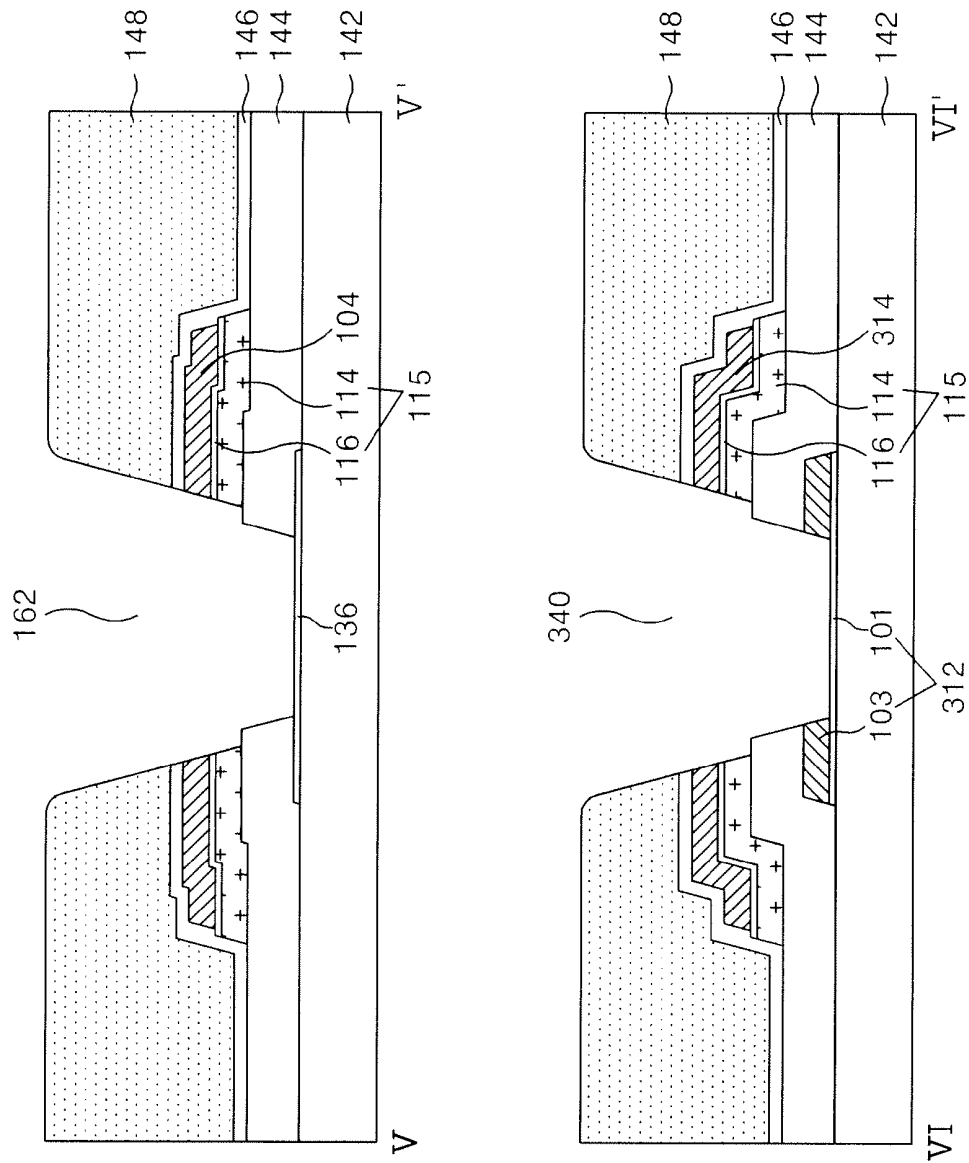
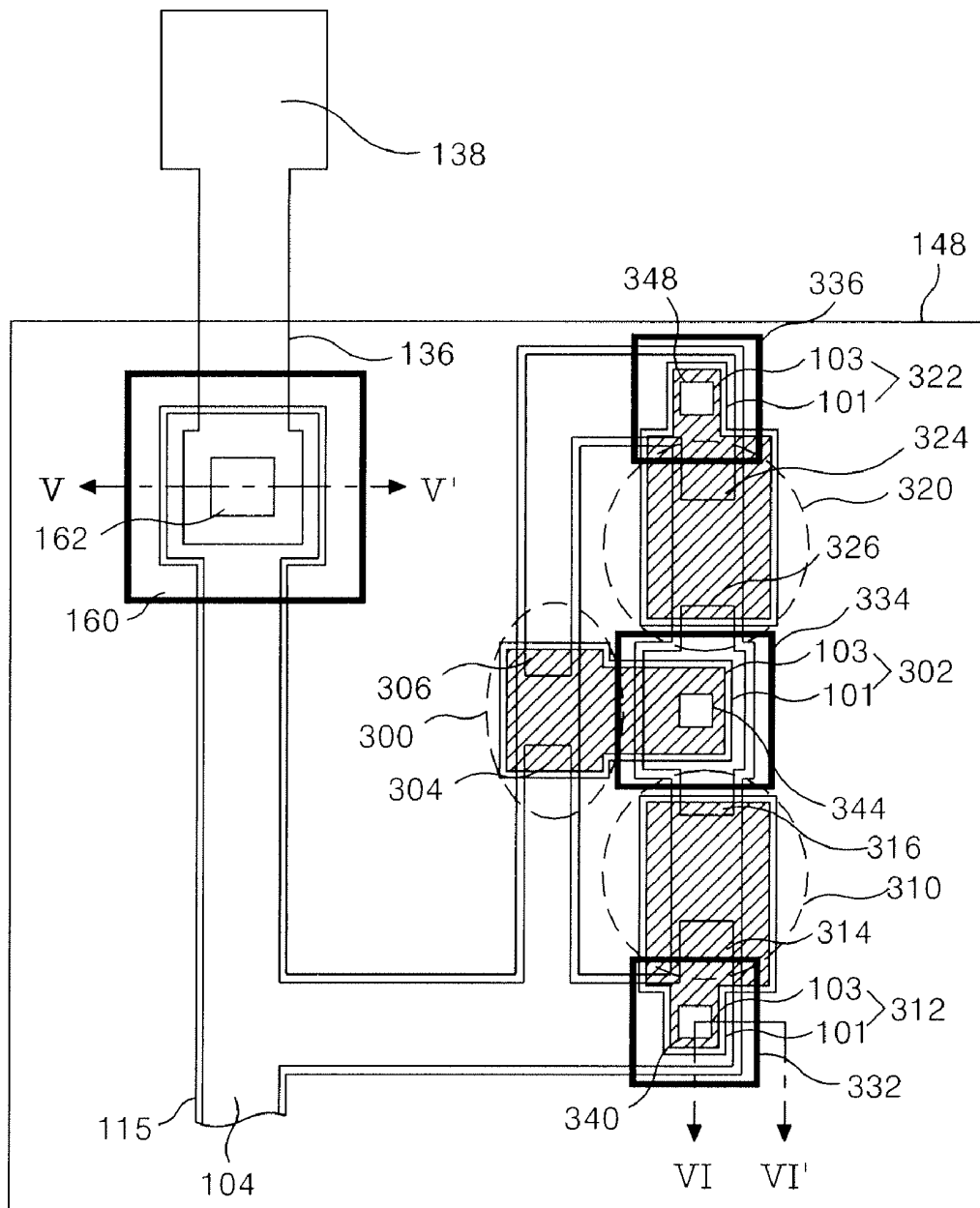


FIG. 18A



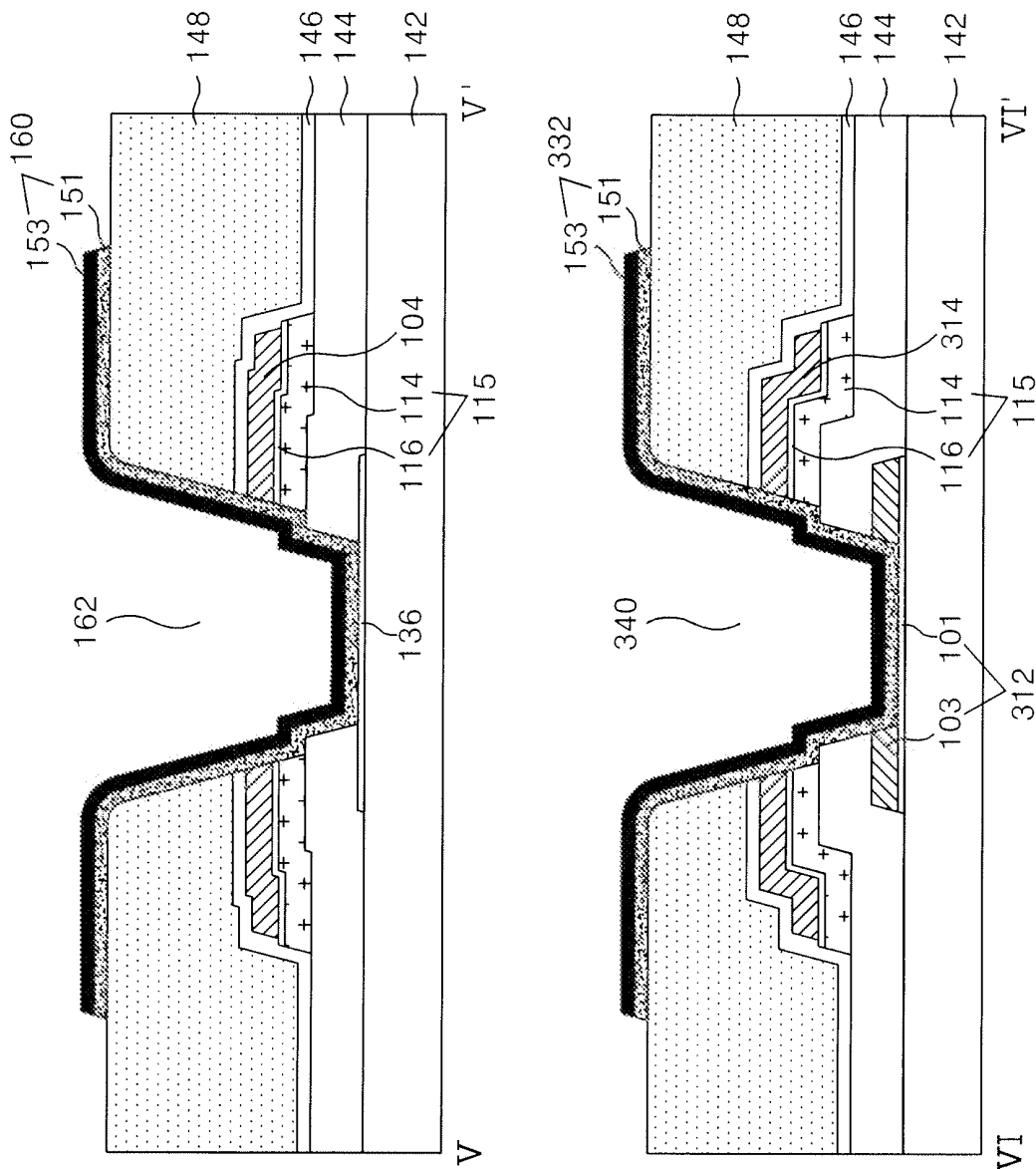


FIG. 18B

TRANSFLECTIVE LIQUID CRYSTAL DISPLAY DEVICE AND FABRICATING METHOD THEREOF

[0001] This application is a divisional application of U.S. patent application Ser. No. 11/143,658, filed on Jun. 3, 2005, which claims the benefit of the Korean Patent Application No. P2004-41143, filed on Jun. 5, 2004, all of which are hereby incorporated by reference for all purposes as if fully set forth herein.

BACKGROUND OF THE INVENTION

[0002] 1. Field of the Invention

[0003] The present invention relates to a transfective thin film transistor substrate of a liquid crystal display device, and more particularly, to a transfective thin film transistor substrate and a simplified method of fabricating the same.

[0004] 2. Description of the Related Art

[0005] Liquid crystal display devices are generally classified into two types: the transmissive type in which pictures are displayed using light supplied from a backlight unit, and the reflective type in which pictures are displayed using light reflected from an external source, such as natural light. There is a problem that the power consumption of a backlight unit is high in the transmissive type and the reflective type depends on the external light so as not to be able to display the picture in a dark environment.

[0006] In order to resolve such a problem, a transfective liquid crystal display device is on the rise, wherein the transfective liquid crystal can be selected to be in a transmissive mode where the backlight unit is used or in a reflective mode where the external light is used. The transfective liquid crystal display device operates in the reflective mode if the external light is sufficient and in the transmissive mode if the external light is not sufficient, thus it might be able to reduce the power consumption more than the transmissive liquid crystal display device and it is not restricted by the external light, which is different from the reflective liquid crystal display device.

[0007] Generally, a transfective liquid crystal display panel, as shown in FIG. 1, includes a color filter substrate and a thin film transistor substrate which are bonded together with a liquid crystal layer (not shown) between them, and a backlight unit arranged behind the thin film transistor substrate. Each pixel of the transfective liquid crystal display panel is divided into a reflective area where a reflective electrode 28 is formed, and a transmissive area where the reflective electrode 28 is not formed.

[0008] The color filter substrate includes a black matrix (not shown) and a color filter 54 formed on an upper substrate 52, and a common electrode 56 and an alignment film (not shown) formed there over.

[0009] The thin film transistor substrate includes a gate line 4 and a data line (not shown) formed on a lower substrate 2 that define each pixel area; a thin film transistor connected to the gate line 4 and the data line; a pixel electrode 32 formed at the pixel area and connected to the thin film transistor; and a reflective electrode 28 formed at a reflective area of each pixel to overlap the pixel electrode 32.

[0010] The thin film transistor includes a gate electrode 6 connected to the gate line 4; a source electrode 16 connected to the data line; a drain electrode 18 facing the source electrode 16; an active layer that overlaps the gate electrode 6 with

a gate insulating film 8 there between to form a channel between the source and drain electrodes 16, 18; and an ohmic contact layer 12 to cause the active layer 10 to be in ohmic contact with the source and drain electrodes 16 and 18. The thin film transistor responds to a scan signal of the gate line 4 to cause a video signal on the data line to be charged and maintained in the pixel electrode 32.

[0011] The reflective electrode 28 reflects an external light that is incident through a color filter substrate, toward the color filter substrate. The surface of the organic film 24 formed under the reflective electrode 28 has an embossed or raised shape, therefore the reflective electrode 28, which is formed on top of the organic film, also has an embossed shape. As a result, the reflective efficiency of the reflective electrode 28 increases due to the dispersion effect of the embossed surface.

[0012] When a pixel signal is applied to the pixel electrode 32 through the thin film transistor, a potential difference between a common electrode 56 and the pixel electrode 28 is generated. The potential difference causes a liquid crystal having dielectric anisotropy to rotate, thereby controlling the transmissivity of the light that runs through the liquid crystal layer in both the reflective and transmissive areas, thus its brightness is changed in accordance with the video signal.

[0013] In this case, a transmission hole 36 is formed in a relatively thick organic film 24 at a transmissive area so that the length of the light path going through the liquid crystal layer is the same in the reflective area as in the transmissive area. As a result, the length of the path RL that ambient light incident to the reflective area travels is the same as the length of the path TL that transmitted light from the backlight unit 60, thus the transmissive efficiency is the same in both the reflective and transmissive modes.

[0014] The thin film transistor substrate further includes a storage capacitor connected to the pixel electrode 32 in order to stably maintain the video signal supplied to the pixel electrode 32. The storage capacitor is formed by having a storage upper electrode 20 overlap the gate line 4 with a gate insulating film there between, wherein the storage upper electrode 20 is connected to the pixel electrode 32. The ohmic contact layer 12 and the active layer 10 further overlap under the storage upper electrode 20 in the process.

[0015] The thin film transistor substrate further includes a first passivation film 22 between the thin film transistor and the organic film 24; a second passivation film between the organic film 24 and the reflective electrode 28; and a third passivation film 30 between the reflective electrode 28 and the pixel electrode 32. Accordingly, the pixel electrode 32 is connected to the drain electrode 18 and the storage upper electrode 20 through each of the first and second contact holes 34, 38 that penetrate the first to third passivation films 22, 26, 30, an organic film 24 and the reflective electrode 28.

[0016] In such a transfective liquid crystal display panel, the thin film transistor substrate includes the semiconductor process and requires a plurality of mask processes, thus its manufacturing process is complicated so that it becomes a material cause for the increase of the liquid crystal display panel manufacturing cost. Hereinafter, a fabricating method of the transfective thin film transistor substrate will be described in reference with FIGS. 2A to 2F.

[0017] Referring to FIG. 2A, a gate metal layer is formed on the lower substrate 2 using a deposition method such as sputtering. Subsequently, the gate metal layer is patterned with a first mask using a photolithography process and an

etching process, thereby forming the gate pattern including the gate line 4 and the gate electrode 8. The gate metal layer is a single layered or double layered metal such as Al, Mo, Cr and the like.

[0018] Next, the gate insulating film 8 is formed on the substrate 2 where the gate pattern is formed, and a source/drain pattern is formed on top thereof using a second mask process as illustrated in FIG. 2B. The source/drain pattern includes the data line, the source electrode 16, the drain electrode 18 and the storage upper electrode 20.

[0019] The gate insulating film 8, an amorphous silicon layer 10, an amorphous silicon layer with impurities doped thereto 12, and the source/drain metal layer are sequentially formed on the lower substrate 2 where the gate pattern is formed. The gate insulating film 8 is an inorganic insulating material such as silicon oxide SiO_x or silicon nitride SiN_x, and the source/drain metal layer is a single or double layered metal structure such as Al, Mo and the like.

[0020] A photo resist pattern is formed on top of the source/drain metal layer using a second mask and a photolithography process. During this process, a diffractive exposure mask with a diffractive exposure part at a channel part of the thin film transistor is used as the second mask, thus the photo resist pattern of the channel part is made to have a lower height than the source/drain pattern part.

[0021] There after, the source/drain metal layer is patterned by wet etching using the photo resist pattern to form the source/drain pattern that includes the data line, the source electrode 16, the drain electrode 18 integrated with the source electrode 16, and the storage upper electrode 20.

[0022] Next, an amorphous silicon layer doped with the impurities and an amorphous silicon layer are simultaneously patterned by a dry etching using the same photo resist pattern, thereby forming the ohmic contact layer 12 and the active layer 10.

[0023] After removing the photo resist pattern having relatively low height at the channel part by ashing, the source/drain pattern and the ohmic contact layer 12 of the channel part are dry etched. Accordingly, the active part 10 of the channel part is exposed to separate the source electrode 16 from the drain electrode 18. There after, the photo resist pattern remaining on the source/drain pattern is removed using a strip process.

[0024] Referring to FIG. 2C, a first passivation film 22 is formed on the gate insulating film 8 where the source/drain pattern is formed, and an organic film 24 is formed on top thereof using a third mask process, such that the organic film 24 has first and second initial contact holes 34, 38 and a transmission hole 36 with an embossed shaped surface.

[0025] The first passivation film 22 and the organic film 24 are sequentially formed on the gate insulating film 8 where the source/drain pattern is formed. The first passivation film 22 is of the same inorganic insulating material as the gate insulating film 8, and the organic film 24 is of a photosensitive organic material such as acrylic resin.

[0026] Then, the organic film 24 is patterned using the third mask, thereby forming first and second open holes 35, 37 and the transmission hole 36 which penetrate the organic film 24 in correspondence to the transmissive part of the third mask. The third mask has a structure where a shielding part and a diffractive exposure part repeat at the rest area except for the transmissive part. The organic film 24 remaining in correspondence thereto is patterned to have a structure that a shielding area (projected part) and a diffractive exposure area

(groove part) having a stepped difference are repeated. Subsequently, the organic film 24 where the projected part and the groove part are repeated is cured so that the surface of the organic film 24 has the embossed shape.

[0027] Referring to FIG. 2D, a second passivation film 26 is formed on the organic film 24, and the reflective electrode 28 is formed on top thereof using a fourth mask process. The second passivation film 26 and the reflective metal layer are deposited to maintain their embossed shape on top of the organic film 24 that has the same embossed surface. The second passivation film 26 is an inorganic insulating material such as the first passivation film 22, and the reflective metal layer is a metal with high reflectivity such as AlNd.

[0028] Subsequently, the reflective metal layer is patterned using a fourth mask and etching process, thus the reflective electrode 28 is formed, wherein the reflective electrode is independent every pixel and is opened at the transmission hole 36 and the first and second open holes 35, 37 of the organic film 24.

[0029] Referring to FIG. 2E, a third passivation film 30 covering the reflective electrode 28 is formed using a fifth mask process, and first and second contact holes 34, 38 penetrating the first to third passivation films 22, 26, 30 are formed. The third passivation film 30, the reflective electrode 28 and the first and second contact holes 34, 38 are formed with the fifth mask using photolithography and etching processes, such that the first and second contact holes 34, 38 penetrate the first to third passivation films 22, 26, 30 at the first and second open holes 35, 37 of the organic film 24. The first and second contact holes 34, 38 each expose the drain electrode 18 and the storage upper electrode 20. The third passivation film is of the same inorganic insulating material as the second passivation film.

[0030] Referring to FIG. 2F, a pixel electrode 32 is formed on the third passivation film 30 by use of a sixth mask process. More specifically, a transparent conductive layer is formed on the third passivation film 30 using a deposition method such as sputtering, and the transparent conductive layer is patterned by the photolithography process using a sixth mask and the etching process to form the pixel electrode at each pixel area. The pixel electrode 32 is connected to the drain electrode 18 and the storage upper electrode 20 through the first and second contact holes 34 and 38. The transparent conductive layer is of indium tin oxide ITO.

[0031] Accordingly, the related art transfective thin film transistor substrate is formed using six different mask processes, thus there is a disadvantage that its manufacturing process is complicated. Further, the margin of the first and second contact holes 34, 38 should be secured sufficiently in order for the pixel electrode 32 to be connected to the drain electrode 18 and the storage upper electrode 20 in the related art transfective thin film transistor substrate. Because of this, there is a disadvantage that the aperture ratio of the transmissive area is reduced.

SUMMARY OF THE INVENTION

[0032] Accordingly, the present invention is directed to a liquid crystal display device and method of fabricating same that substantially obviates one or more of the problems due to limitations and disadvantages of the related art.

[0033] An advantage of the present invention is to provide a transfective thin film transistor substrate with an improved aperture ratio and a simplified method of fabricating the same.

[0034] Additional features and advantages of the invention will be set forth in the description which follows, and in part will be apparent from the description, or may be learned by practice of the invention. The objectives and other advantages of the invention will be realized and attained by the structure particularly pointed out in the written description and claims hereof as well as the appended drawings.

[0035] To achieve these and other advantages and in accordance with the purpose of the present invention, as embodied and broadly described, a liquid crystal display device, is provided, comprising: first and second substrates; a gate line having a double layer structure including a first transparent conductive layer and a second opaque conductive layer on the first substrate; a first insulation layer on the gate line; a data line crossing the gate line to define a pixel region, the pixel region having a transmissive region and a reflective region; a thin film transistor connected to the gate and data lines; a pixel electrode formed of the transparent conductive layer in the pixel region; an upper storage electrode to form a storage capacitor by overlapping the gate line with the gate insulating film there between; a transmission hole exposing the pixel electrode by passing through a second insulation layer on the thin film transistor to the first insulation layer; a reflective electrode connected to the pixel electrode with a drain electrode and the upper storage electrode exposed through an edge part of the transmission hole; a gate pad extending from the first conductive layer of the gate line; a data pad formed of the first conductive layer and connected to the data line through a data link; and a liquid crystal layer between the first and second substrates; wherein the first and second insulation layers are removed in the gate and data pads.

[0036] In another aspect of the invention, a method of fabricating a liquid crystal display device, is provided, comprising: providing first and second substrates; forming a gate line and a gate electrode having a double layer structure including a first transparent conductive layer and a second opaque conductive layer, and a pixel electrode having the first conductive layer using a first mask; forming a first insulation layer on the electrodes; forming a semiconductor pattern on the first insulation layer, a source/drain pattern having an upper storage electrode, a drain electrode, a source electrode, and a data line using a second mask, the gate and data lines defining a pixel region having a transmissive region and a reflective region; forming a second insulation layer on the source/drain pattern and a transmission hole penetrating from the second insulation layer to the first insulation layer in the transmissive region using a third mask; forming a reflective electrode in the reflective region using a fourth mask, the reflective electrode connecting the pixel electrode with the drain electrode and the storage electrode through the transmission hole; and forming a liquid crystal layer between the first and second substrates.

[0037] It is to be understood that both the foregoing general description and the following detailed description are exemplary and explanatory and are intended to provide further explanation of the invention as claimed.

BRIEF DESCRIPTION OF THE DRAWINGS

[0038] The accompanying drawings, which are included to provide a further understanding of the invention and are incorporated in and constitute a part of this specification, illustrate embodiments of the invention and together with the description serve to explain the principles of the invention.

[0039] In the drawings:

[0040] FIG. 1 is a sectional view illustrating part of a transreflective liquid crystal display panel according to the related art;

[0041] FIGS. 2A to 2F are sectional views illustrating a method of fabricating the transreflective thin film transistor substrate illustrated in FIG. 1;

[0042] FIG. 3 is a plane view partially illustrating a transreflective thin film transistor substrate according to an embodiment of the present invention;

[0043] FIG. 4 is a sectional view illustrating the transreflective thin film transistor substrate of FIG. 3, taken along the line II-II', III-III', IV-IV';

[0044] FIGS. 5A and 5B illustrate a plane view and a sectional view, respectively, of a first mask process utilized in fabricating a transreflective thin film transistor substrate according to an embodiment of the present invention;

[0045] FIGS. 6A and 6E are sectional views more specifically illustrating the first mask process according to the present invention;

[0046] FIGS. 7A and 7B illustrate a plane view and a sectional view, respectively, of a second mask process utilized to fabricate a transreflective thin film transistor substrate according to an embodiment of the present invention;

[0047] FIGS. 8A and 8E are sectional views more specifically illustrating the second mask process of the present invention;

[0048] FIGS. 9A and 9B illustrate a plane view and a sectional view, respectively, of a third mask process utilized to fabricate a transreflective thin film transistor substrate according to an embodiment of the present invention;

[0049] FIGS. 10A and 10C are sectional views more specifically illustrating the third mask process of the present invention;

[0050] FIGS. 11A and 11B illustrate a plane view and a sectional view, respectively, of a fourth mask process utilized to fabricate a transreflective thin film transistor substrate according to an embodiment of the present invention;

[0051] FIG. 12 is a plane view briefly illustrating the transreflective thin film transistor substrate according to the present invention, with a surrounding part centered;

[0052] FIG. 13 is a plane view illustrating a static electricity prevention device area and a contact area of a data link and a data line illustrated in FIG. 12;

[0053] FIG. 14 is sectional view illustrating the transreflective thin film transistor substrate of FIG. 13 taken along the line V-V' and VI-VI';

[0054] FIGS. 15A and 15B illustrate a plane view and a sectional view, respectively, of a first mask process utilized to fabricate the transreflective thin film transistor substrate of FIG. 14;

[0055] FIGS. 16A and 16B illustrate a plane view and a sectional view, respectively, of a second mask process utilized to fabricate the transreflective thin film transistor substrate of FIG. 14;

[0056] FIGS. 17A and 17B illustrate a plane view and a sectional view, respectively, of a third mask process utilized to fabricate the transreflective thin film transistor substrate of FIG. 14; and

[0057] FIGS. 18A and 18B illustrate a plane view and a sectional view, respectively, of a fourth mask process utilized to fabricate the transreflective thin film transistor substrate of FIG. 14;

DETAILED DESCRIPTION OF THE ILLUSTRATED EMBODIMENTS

[0058] Reference will now be made in detail to embodiments of the present invention, examples of which are illustrated in the accompanying drawings.

[0059] FIG. 3 is a plane view partially illustrating a transreflective thin film transistor substrate according to an embodiment of the present invention, and FIG. 4 is a sectional view illustrating the transreflective thin film transistor substrate of FIG. 3 taken along the line II-II, III-III', IV-IV'.

[0060] Referring to FIGS. 3 and 4, the transreflective thin film transistor substrate includes: a gate line 102 and a data line 104 that define a pixel area on a lower substrate 142 by crossing each other with a gate insulating film 144 there between; a thin film transistor 106 connected to the gate line 102 and the data line 104; a reflective electrode 152 formed in a reflective area of each pixel; and a pixel electrode 118 formed in each pixel area and connected to the thin film transistor 106 through the reflective electrode 152. The transreflective thin film transistor substrate also includes: a storage capacitor 120 that is formed by the overlapping of the previous gate line 102 and an upper storage electrode 122 connected to the pixel electrode 118 through a reflective electrode 152; a gate pad 128 connected to the gate line 102; and a data pad 138 connected to the data line 104. Each pixel area is divided into a reflective area where the reflective electrode 152 is formed and a transmissive area where the reflective electrode 152 is not formed.

[0061] The thin film transistor 106 includes: a gate electrode 108 connected to the gate line 102; a source electrode 110 connected to the data line 104; a drain electrode 112 facing the source electrode 110; an active layer 114 overlapping the gate electrode 108 with a gate insulating film 144 there between to form a channel between the source electrode 110 and the drain electrodes 112; and an ohmic contact layer 116 formed on the active layer 114 except for the channel part to make an ohmic contact with the source electrode 110 and the drain electrodes 112. The thin film transistor 106 responds to the scan signal of the gate line 102 to cause a video signal on the data line 104 to be charged and maintained in the pixel electrode 118.

[0062] As illustrated in FIG. 4, the gate line 102 and the gate electrode 108 have a double layer structure including a first conductive layer 101 and a second conductive layer 103. For example, the first conductive layer is a transparent conductive layer and the second conductive layer 103 is a metal layer deposited on top thereof.

[0063] In addition, the semiconductor pattern 115, including the active layer 114 and the ohmic contact layer 116, overlaps the data line 104.

[0064] The reflective electrode 152 is formed in the reflective area of each pixel to reflect an external light. The reflective electrode 152 has an embossed shape in accordance with the shape of the organic film 148 there under, thus its reflection efficiency increases due to the dispersion effect. The reflective electrode 152 has a double layer structure including first and second reflective metal layers 151 and 153. The first reflective metal layer 151 is formed of a metal, such as Mo, capable of reducing contact resistance between the reflective pixel and the pixel electrode 118, which is formed of a transparent conductive layer. The second reflective metal layer is formed of a metal, such as AlNd and the like, with a high reflectibility.

[0065] The pixel electrode 118 is formed in each pixel area and connected to the drain electrode 112 through the reflective electrode 152 that goes through an edge part of a transmission hole 154. The pixel electrode 118 is formed of a transparent conductive layer like the first conductive layer 101 of the gate line 102 and is exposed through the transmis-

sion hole 154 in the transmissive area. The pixel electrode 118 generates a potential difference with a common electrode of a color filter substrate (not shown) in accordance with a pixel signal supplied through the thin film transistor. The potential difference causes the liquid crystal having dielectric anisotropy to rotate, thereby controlling the transmissivity of the light through the liquid crystal layer, thus its brightness is changed in accordance with the video signal.

[0066] The transmission hole 154 formed in the transmissive area penetrates the gate insulating film 144 over a portion of the pixel electrode 118, and the passivation film 146, the organic film 148 on the thin film transistor 106. Accordingly, the length of the light path that runs through the liquid crystal layer is the same in the reflective area and the transmissive area, thus the transmission efficiency of the reflective mode and the transmissive mode is the same.

[0067] The upper storage electrode 122 overlaps the previous gate line 102 with the gate insulating film 144 there between, and connects to the pixel electrode 118 through the reflective electrode, thereby forming the storage capacitor 120. The gate line 102 is connected to a gate driver (not shown) through the gate pad 128. The first conductive layer 101 of the gate line 102 is extended to form the gate pad 128.

[0068] The data line 104 is connected to a data driver (not shown) through the data pad 138. The data pad 138 is formed of the first conductive layer 101 like the gate pad 128. The data pad 138 is connected to the data line 104 through a separate contact electrode (not shown).

[0069] In the pad area having the gate pad 128 and the data pad 138, the gate insulating film 144, the passivation film 146 and the organic film 148 are removed.

[0070] The transreflective thin film transistor substrate according to the embodiment of the present invention has the pixel electrode 118 connected to the drain electrode 112 and the upper storage electrode 122 through the reflective electrode 152 that runs through the edge part of the transmission hole 154. Accordingly, it is not necessary to have a separate contact hole for connecting the pixel electrode 118 with the drain electrode 112 and the upper storage electrode 122, thus the aperture ratio of the transmissive area is increased.

[0071] In addition, the first reflection metal layer 151 of the reflective electrode 152 is connected to the pixel electrode 118, wherein the first reflection metal layer has a small contact resistance with the transparent conductive layer. Accordingly, AlNd and ITO are connected through Mo in case that Mo is used for the first reflective electrode 151, AlNd is used for the second reflection layer 153 and ITO is used for the pixel electrode 118, thus the contact resistance of AlNd and ITO caused by the generation of Al_2O_3 is reduced.

[0072] The thin film transistor according to the embodiment of the present invention may be formed using a five mask processes, thereby simplify the fabrication process compared to the related art six mask process.

[0073] FIGS. 5A and 5B illustrate a plane view and a sectional view, respectively, of a first mask process utilized in fabricating the transreflective thin film transistor substrate according to the present invention, and FIGS. 6A and 6E are sectional views more specifically illustrating the first mask process of the present invention.

[0074] As illustrated in FIG. 5B, a gate pattern and a transparent conductive pattern are formed on the lower substrate 142 using a first mask process. The gate pattern includes a gate line 102, a gate electrode 108 connected to the gate line 102, and the transparent conductive pattern includes a gate

pad **128**, a data pad **138** and a pixel electrode **118**. The gate pattern has a double layer structure including first and second conductive layers **101**, **103**. The transparent conductive pattern has a single layer structure formed of the same material as the first conductive layer **101** of the gate pattern. The gate pattern having the double structure and the transparent conductive pattern having the single layer structure are formed use a half-tone mask or a diffractive mask using one mask process. Hereinafter, only an example for using the half-tone mask will be described.

[0075] As illustrated in FIG. 6A, the first and second conductive layers **101**, **103** are deposited on the lower substrate **142** using a deposition method such as sputtering, and a photo-resist **167** is formed on the first and the second conductive layer **101** and **103**. The first conductive layer **101** is formed of a transparent conductive material such as ITO, TO, IZO and the like, and the second conductive layer **103** is formed of a metal material such as Mo, Ti, Cu, Al(Nd) system and the like. Then, the photo-resist **167** is exposed and developed using a photolithography process with a half-tone mask **260**, to form a photo-resist pattern **168** having a stepped difference as illustrated in FIG. 6B.

[0076] The half-tone mask **260** includes a transparent quartz substrate **266**, a shielding layer **262** formed on transparent quartz substrate **266**, and a partial transmissive layer **264**. The shielding layer **262** overlaps the partial transmission layer **264** located in the area where the gate pattern is to be formed, to intercept ultraviolet ray, thereby leaving a first photo-resist pattern **268A** after development. The partial transmissive layer **264** not overlapped by the shielding layer **262** is located in the area where the transparent conductive pattern is to be formed, to transmit partially ultraviolet ray, thereby leaving a second photo-resist pattern **268B** thinner than the first photo-resist pattern **268A** after development. The shielding layer **262** is formed of a metal such as Cr, CrOx and the like, and the partial transmissive layer **264** is formed of MoSix and the like.

[0077] The first and the second conductive layers **101** and **103** are then patterned by etching the conductive layers using the photo resist patterns **268A** and **268B** having a stepped difference, thereby forming the gate pattern of the double layer structure and the transparent conductive pattern on which the second conductive layer **103** is remained, as illustrated in FIG. 6C. Then, the photo resist pattern **268** is ashed using oxygen O₂ plasma. As a result, the first photo-resist pattern **268A** becomes thinner and the second photo-resist pattern **268B** is removed, as illustrated in FIG. 6D. The second conductive layer **103** on the transparent conductive layer is removed by an etching process using the ashed first photo-resist pattern **268A**. At this moment, both sides of the second conductive layer **103** are etched once more along the ashed first photo-resist pattern **268A**, thus the first and the second conductive layers **101** and **103** of the gate pattern have a fixed stepped difference in a step shape. Accordingly, when a lateral surface part of the first and the second conductive layers **101** and **103** has a high steep inclination, it is possible to prevent an open defect of the source/drain metal layer from being generate on the first and the second conductive layers **101** and **103**. The first-photo resist pattern **268A** remaining on the gate pattern is then removed using a strip process as illustrated in FIG. 6E.

[0078] FIGS. 7A and 7B illustrate a plane view and a sectional view of a second mask process utilized in fabricating a transfective thin film transistor substrate according to the

present invention, and FIGS. 8A to 8E are sectional views more specifically illustrating the second mask process.

[0079] Referring to FIG. 7B, a gate insulating film **144** is formed on the lower substrate **142** including where the gate pattern and the pixel electrode **118** are formed. In addition, a source/drain pattern and a semiconductor pattern **115** including the active layer **114** and the ohmic contact layer **116** that overlap along the rear surface of the source/drain pattern are formed on top thereof using a second mask process. The source/drain pattern includes a data line **104**, a source electrode **110**, a drain electrode **112**, and an upper storage electrode **122**. The semiconductor pattern **115** and the source/drain pattern are formed using a single mask process with, for example, a diffractive exposure mask.

[0080] More specifically, a gate insulating film **144**, an amorphous silicon layer **105**, an amorphous silicon layer **107** doped with impurities n+ or p+, and a source/drain metal layer **109** are sequentially formed on the lower substrate **142** including where the gate pattern is formed as illustrated in FIG. 8A. For example, the gate insulating film **144**, the amorphous silicon layer **105**, and the amorphous silicon layer **107** doped with impurities are formed by PECVD, and the source/drain metal layer **109** is formed by sputtering. The gate insulating film **144** is an inorganic insulating material such as silicon oxide SiO_x, silicon nitride SiN_x, and the source/drain metal layer **109** is formed of Cr, Mo, MoW, Al/Cr, Cu, Al(Nd), Al/Mo, Al(Nd)/Al, Al(Nd)/Cr, Mo/Al(Nd)/Mo, Cu/Mo, Ti/Al(Nd)/Ti and the like. For an example of the double layer, in case of Al/Cr, Al layer is formed after Cr layer is formed.

[0081] A photo-resist **219** is then spread over the source/drain metal layer **109**, and exposed and developed using a photolithography process with a diffractive exposure mask **210**, thereby forming a photo-resist pattern **220** having the stepped difference as illustrated in FIG. 8B.

[0082] The diffractive exposure mask **210** includes a transparent quartz substrate **212**, a shielding layer **214** formed of a metal layer such as Cr, CrOx and the like on top thereof, and a diffractive exposure slit **216**. The shielding layer **214** is located to intercept ultraviolet rays in the area where the semiconductor pattern and the source/drain pattern are to be formed, thereby leaving a first photo-resist pattern **220A** after development. The diffractive exposure slit **216** is located to diffract ultraviolet rays in the area where the channel of the thin film transistor is to be formed, thereby leaving a second photo-resist pattern **220B** that is thinner than the first photo-resist pattern **220A** after development.

[0083] Subsequently, the source/drain metal layer **109** is patterned by etching the photo-resist pattern **220** having a stepped difference, thereby forming the source/drain pattern and the semiconductor pattern **115** there under as illustrated in FIG. 8C. At this point in the process, the source electrode **110** and the drain electrode **112** are integrated with each other.

[0084] And then, the photo-resist pattern **220** is ashed using oxygen O₂ plasma. As a result, the first photo-resist pattern **220A** becomes thinner and the second photo-resist pattern **220B** is removed, as illustrated in FIG. 8D. In addition, the source/drain pattern exposed by the removal of the second photo-resist pattern **220B** and the ohmic contact layer **116** there under are eliminated by the etching process using the ashed first photo-resist pattern **220A**, thereby separating the source electrode **110** from the drain electrode **112** and exposing the active layer **114**. Accordingly, a channel of the active layer **114** is formed between the source electrode **110** and the

drain electrode 112. At this moment, both sides of the source/drain pattern are etched once more along the ashed first photo resist pattern 220A, thus the source/drain pattern and the semiconductor pattern 115 have a fixed stepped difference in a step shape. The first photo resist pattern 220A remaining on the source/drain pattern is removed using a strip process as illustrated in FIG. 8E.

[0085] FIGS. 9A and 9B illustrate a plane view and a sectional view, respectively, of a third mask process utilized in fabricating a transfective thin film transistor substrate according to the present invention, and FIGS. 10A to 10C are sectional views sequentially illustrating the third mask process of the present invention.

[0086] Referring to FIG. 9B, a passivation film 146 and an organic film 148, having a transmission hole 154 in a transmissive area, are formed on the gate insulating film 144 having the source drain pattern using a third mask process.

[0087] More specifically, as illustrated in FIG. 10A, the passivation film 146 is formed on the gate insulating film 144 including where the source/drain pattern is formed using a deposition method such as PECVD. The passivation film 146 is an inorganic insulating material like the gate insulating film 144. Then, the organic film 148 having an embossed surface in a reflective area and a transmission hole 154 in a transmissive area is formed on the passivation film 148 as illustrated in FIG. 10B.

[0088] The organic film 148 is formed on the passivation film 146 by coating a photosensitive organic material such as acrylic resin using a spin coating method. Then, the organic film 148 is patterned using a photolithography process with the third mask, thereby forming the transmission hole 154 which penetrates the organic film 148 in correspondence to the transmission part of the third mask and removing the organic film 148 of a pad area having the data pad 138. Further, the third mask has a structure where a shielding part and a diffractive exposure part (or a transfective part) repeat except in the transmission part. The organic film 24 in correspondence to the above repeat structure is patterned to have a structure that a shielding area (projected part) and a diffractive exposure area (groove part) having a stepped difference are repeated. Subsequently, the organic film 24 where the projected part and the groove part are repeated is fired so that the surface of the organic film 24 has an embossed shape.

[0089] Referring to FIG. 10C, the passivation film 146 and the gate insulating film 144 are patterned by using the organic film 148 as a mask, so that the transmission hole 154 penetrates to the gate insulating film 144, and the passivation film 146 and the gate insulating film 144 in the pad area are removed. In this case, the drain electrode 112, the upper storage electrode 122 and the semiconductor pattern under the upper storage electrode 122 that are exposed through the transmission hole 154 are etched. Due to a difference of etching speed, an edge part of the gate insulating film 144 has a projected structure as compared to the drain electrode 112, the upper storage electrode 122 and the semiconductor pattern under the upper storage electrode 122. The transmission hole 154 exposes the second conductive layer 103 of the pixel electrode 118, the edge part of the transmission hole 154 exposes a lateral surface of the drain electrode 112 and the upper storage electrode 122.

[0090] FIGS. 11A and 11B illustrate a plane view and a sectional view, respectively, of a fourth mask process utilized in fabricating a transfective thin film transistor substrate according to the present invention. As illustrated in FIG. 11B,

the reflective electrode 152 is formed in each pixel reflective area using the fourth mask process.

[0091] Specifically, a reflective metal layer is formed on the embossed surface of the organic film 148, and the reflective metal layer maintains the embossed shape. The reflective metal layer has a double-layered structure including a first reflective metal layer 151 having a small contact resistance with a pixel electrode material, for example, Mo, and a second reflective metal layer 153 having a high reflectivity like AlNd. Subsequently, the first and the second reflection metal layers 151 and 153 are patterned using a photolithography process with the fourth mask and an etching process, thereby forming the reflective electrode 152 in the reflective area of each pixel. The reflective electrode 152 connects the drain electrode 112 with the pixel electrode 118 through the edge part of the transmission hole 154, and connects the upper storage electrode 122 with the pixel electrode 118. Accordingly, no separate contact hole is required for connecting the pixel electrode 118 with the drain electrode 112 and the upper storage electrode 122, thus the aperture ratio of the transmissive area is increased. Furthermore, the first reflection metal layer 151 of the reflective electrode 152 is connected to the pixel electrode 118, that is, a transparent conductive layer, it is possible to reduce a contact resistance.

[0092] As described above, the transfective thin film transistor substrate and the method of fabricating the same according to the present invention forms the pixel electrode using a half-tone or a diffractive exposure mask like the gate pattern, and connects the pixel electrode 118 to the drain electrode 112 and the upper storage electrode 122 using the reflective electrode 152, thereby reducing the process by at least one mask process as compared to the prior art.

[0093] FIG. 12 illustrates an ambient part of the transfective thin film transistor substrate according to the present invention. As illustrated, the transfective thin film transistor substrate 100 includes a contact electrode 160 connecting the data pad 138 formed in the same layer as the gate pad 128 with the data line 104. In other words, the contact electrode 160 connects a data link 136 extending from the data pad 138 with the data line 104. The contact electrode 160 is formed of the same metal layer AlNd, AlNd/Mo as the reflective electrode 152 that is formed in the active area 182. The contact electrode 160 has a problem that it is corroded by oxidation when it is exposed to the outside, thus it is located in an area which is sealed by a sealant 180, i.e., between the sealant 180 and the active area 182.

[0094] Furthermore, the thin film transistor substrate 100 includes an electrostatic discharging device 190 for intercepting the static electricity flowing into the active area 182. The electrostatic discharging device 190 is connected to the data line 104 or the gate line 102, and includes a plurality of thin film transistors 300, 310, 320 having a reciprocal connection relationship. The static electricity prevention device 190 causes any over current to be discharged by having low impedance at a high voltage area by the static electricity, thereby intercepting the static electricity inflow. In addition, it does not affect a drive signal supplied through the gate line 102 or the data line 104 by having high impedance at a normal drive environment. The electrostatic discharging device 190 requires a plurality of contact electrodes for reciprocally connecting the thin film transistors 300, 310, 320. The contact electrodes are also formed of the same metal layer AlNd, AlNd/Mo as the reflective electrode 152. Accordingly, the

electrostatic discharging device **190** is also formed at the area sealed by the sealant **180**, i.e., between the sealant **180** and the active area **182**.

[0095] FIG. **13** is a plane view illustrating the electrostatic discharging device **190** and the contact electrode **160** connected to the data line **104** illustrated in FIG. **12**, and FIG. **14** is a sectional view illustrating the thin film transistor substrate taken along the line V-V', VI-VI' of FIG. **13**.

[0096] Referring to FIGS. **13** and **14**, a data link **136** overlaps an end part of the data line **104** extending from the data pad **138** and located in the area sealed by the sealant **180**. The data link **136** has the transparent conductive layer, that is, the first conductive layer **101**, like the data pad **138**.

[0097] The first contact electrode **160** is formed over the first contact hole **162** formed at the overlapped part of both the data link **136** and the data line **104** to connect the data line **104** to the data link **136**. The first contact hole **162** penetrates the organic film **148**, the passivation film **146**, the data line **104**, the semiconductor pattern **115**, and the gate insulating film **144**, exposing the data link **136**. Accordingly, the first contact hole **160** is connected to a side surface of the data line **104** that is exposed through the first contact hole **162**, and the first contact hole **160** is connected to a surface of the data link **136**.

[0098] The electrostatic discharging device connected to the data line **104** includes the second to fourth thin film transistors **300**, **310**, **320**. The second thin film transistor **300** includes a second source electrode **304** connected to the data line **104**, a second drain electrode **306** opposite the second source electrode **304**, and a second gate electrode **302** overlapping the second source and drain electrodes **304**, **306** with the semiconductor pattern **115** and the gate insulating film **144** there between. The second gate electrode **302** has a double layer structure including the first and second conductive layers **101**, **103**.

[0099] The third thin film transistor **310** is connected to the second source electrode **304** and the second gate electrode **302** of the second thin film transistor in a diode form. For this, the third thin film transistor **310** includes a third source electrode **314** connected to the second source electrode **304**, a third drain electrode **316** opposite the third source electrode **314**, and a third gate electrode **312** overlapping the third source and drain electrodes **314**, **316** with the semiconductor pattern **115** and the gate insulating film **144** there between. The third gate electrode **312** has a double layer structure including the first and second conductive layers **101**, **103**. In addition, the third gate electrode **312** is connected to the third source electrode **314** through a second contact electrode **332** formed over the second contact hole **340**. The second contact hole **340** penetrates the organic film **148**, the passivation film **146**, the third source electrode **314**, the semiconductor pattern **115**, the gate insulating film **144** and the second conductive layer **103** of the third gate electrode **312** exposing the first conductive layer **101** of the third gate electrode **312**.

[0100] The fourth thin film transistor **320** is connected to the second drain electrode **306** and the second gate electrode **302** of the second thin film transistor in a diode form. For this, the fourth thin film transistor **320** includes a fourth source electrode **324** connected to the second drain electrode **306**, a fourth drain electrode **326** opposite to the fourth source electrode **324**, and a fourth gate electrode **322** overlapping the fourth source and drain electrodes **324**, **326** with the semiconductor pattern **115** and the gate insulating film **144** there between. The fourth gate electrode **322** has a double layer structure including the first and second conductive layers **101**,

103. In addition, the fourth drain electrode **326** is connected to the third drain electrode **316**, and it is connected to the second gate electrode **302** through the third contact electrode **334** which is formed over a third contact hole **344**. Furthermore, the fourth gate electrode **332** is connected to the fourth source electrode **324** through the fourth contact electrode **336** which is formed over a fourth contact hole **348**. The third contact hole **344** penetrates the organic film **148**, the passivation film **146**, the fourth drain electrode **326**, the semiconductor pattern **115**, the gate insulating film **144**, and the first conductive layer **103** of the second gate electrode **302**. The fourth contact hole **348** penetrates the organic film **148**, the passivation film **146**, the fourth source electrode **324** and the semiconductor pattern **115**, the gate insulating film **144** and the first conductive layer **103** of the fourth gate electrode **322**.

[0101] Herein, the first to fourth contact electrodes **160**, **332**, **334**, **336** are formed to have a double layer structure wherein first and second reflective metal layers are deposited at the same metal layer as the reflective electrode **152** as described above. Accordingly, since the first reflection metal layer **151** of the first to the fourth contact electrodes **160**, **332**, **334**, **336** is connected the first conductive layer **103**, that is, the transparent conductive layer, it is possible to reduce a contact resistance.

[0102] The transreflective thin film transistor substrate having such a structure is formed using four mask processes as described above. This will be explained with reference to FIGS. **15A** to **19B**.

[0103] Referring to FIGS. **15A** and **15B**, a gate pattern is formed on the lower substrate **142** using the first mask process, wherein the gate pattern includes the data link **136** along with the data pad **138**, and the second to fourth gate electrodes **302**, **312**, **322**. Herein, the data pad **138** and the data link **136** are formed to have only the transparent conductive layer, that is, the first conductive layer **101**, and the gate pattern including the second to the fourth gate electrodes **302**, **312** and **322** has a double layer structure in which the first and the second conductive layers **101** and **103** are deposited. The first mask process uses the half-tone mask (or the diffractive mask) as described in FIGS. **5A** and **6E**.

[0104] Referring to FIGS. **16A** and **16B**, a gate insulating film **144**, a semiconductor pattern **115** including an active layer **114** and an ohmic contact layer **116**, and a source/drain pattern including a data line **104**, second to fourth source electrodes **304**, **314**, **324**, and second to fourth drain electrodes **306**, **316**, **326** are formed using the second mask process. The second mask process is the same as described in FIGS. **7A** and **8E**.

[0105] Referring to FIGS. **17A** and **17B**, a passivation film **146** and an organic film **148** are formed using the third mask process, a first contact hole **162** penetrating from the organic film **148** to the gate insulating film **144** and second to fourth contact holes **340**, **344**, **348** penetrating to the second conductive layer **103** of the second and third gate electrodes are formed. The third mask process is the same as described in FIGS. **9A** to **10C**. In this case, the organic film **148** is removed at the pad area and doesn't have an embossed surface in the area where the reflective electrode **152** is not formed.

[0106] Referring to FIGS. **18A** and **18B**, first to fourth contact electrodes **162**, **332**, **334** and **336** are formed having a double layer structure identical to the reflective electrode **152**, using the fourth mask process. The fourth mask process is the same as described in FIGS. **11A** and **11B**.

[0107] As described above, in the transfective thin film transistor substrate and the method of fabricating method according to the present invention, the gate pattern of double structure and the transparent conductive pattern of the single layer structure are formed by one mask process using a half-tone mask (or a diffractive mask). Thus, it is possible to simplify the fabrication processes. Furthermore, since the first and the second conductive layers of the gate pattern of the double layer structure have a fixed stepped difference in a step shape, it is possible to prevent an open in the source/drain pattern caused by the steep inclination of the first and the second conductive layers.

[0108] Furthermore, in the transfective thin film transistor substrate and the method of fabricating method according to the present invention, the transmission hole exposing the pixel electrode is formed upon patterning the organic film and the reflective electrode passing through the edge part of the transmission hole connects the drain electrode and the upper storage electrode to the pixel electrode. Accordingly, it is possible to simplify the fabrication processes and is not necessary to have a separate contact hole for connecting the pixel electrode with the drain electrode and the upper storage electrode, thus the aperture ratio of the transmissive area is increased.

[0109] Further, in the transfective thin film transistor substrate and the method of fabricating same according to the present invention, a contact electrode of the same metal as the reflective electrode connects the data link to the data line, wherein the data link and the data line are formed in layers different from each other, and the thin film transistors of the static electricity prevention device are reciprocally connected. Accordingly, it is possible to simplify processes by performing four mask processes.

[0110] Moreover, in the transfective thin film transistor substrate and the method of fabricating method according to the present invention, the reflective electrode and the contact electrode have a double layer structure and the first reflection metal layer that have a low contact resistance is connected to the transparent conductive layer. Accordingly, it is possible to reduce contact resistance.

[0111] It will be apparent to those skilled in the art that various modifications and variation can be made in the present invention without departing from the spirit or scope of the invention. Thus, it is intended that the present invention cover the modifications and variations of this invention provided they come within the scope of the appended claims and their equivalents.

What is claimed is:

1. A liquid crystal display device, comprising:

first and second substrates;

a gate line having a double layer structure including a first transparent conductive layer and a second opaque conductive layer on the first substrate;

a first insulation layer on the gate line;

a data line crossing the gate line to define a pixel region, the pixel region having a transmissive region and a reflective region;

a thin film transistor connected to the gate and data lines;

a pixel electrode formed of the transparent conductive layer in the pixel region;

an upper storage electrode to form a storage capacitor by overlapping the gate line with the gate insulating film there between;

a transmission hole exposing the pixel electrode by passing through a second insulation layer on the thin film transistor to the first insulation layer;

a reflective electrode connected to the pixel electrode with a drain electrode and the upper storage electrode exposed through an edge part of the transmission hole;

a gate pad extending from the first conductive layer of the gate line;

a data pad formed of the first conductive layer and connected to the data line through a data link; and

a liquid crystal layer between the first and second substrates;

wherein the first and second insulation layers are removed in the gate and data pads.

2. The device of claim 1, further comprising a third insulation layer between the thin film transistor and the second insulation layer.

3. The device of claim 2, wherein the third insulation layer is an inorganic material.

4. The device of claim 2, wherein the transmission hole passes through the third insulation layer.

5. The device of claim 1, wherein the second insulation layer is an organic material.

6. The device of claim 1, further comprising:

a first contact hole passing through the second insulation layer, the data line and the first insulation layer exposing the data link, the data link being overlapped with an end part of the data line; and

a first contact electrode substantially laterally connected to the data line via the first contact hole and connected to a surface of the data link.

7. The device of claim 6, wherein the first contact electrode is formed of the same material as the reflective electrode.

8. The device of claim 6, wherein the first contact electrode is formed in a sealant region.

9. The device of claim 6, wherein the reflective electrode and the first contact electrode having a double layer structure of AlNd and Mo.

10. The device of claim 1, further comprising an electrostatic discharging device connected to one of the gate and data lines.

11. The device of claim 10, wherein the electrostatic discharging device comprises:

a second thin film transistor connected to one of the gate and data lines;

a third thin film transistor connected between a gate electrode and a source electrode of the second thin film transistor in a diode form;

a fourth thin film transistor connected between a gate electrode and a drain electrode of the second thin film transistor in a diode form;

a second contact electrode connected to a source electrode and a gate electrode of the third thin film transistor through a second contact hole;

a third contact electrode connected to a drain electrode of the third or fourth thin film transistor to the gate electrode of the second thin film transistor through a third contact hole; and

a fourth contact electrode connected to a source electrode and a gate electrode of the fourth thin film transistor through a fourth contact hole.

12. The device of claim **11**, wherein the gate electrodes of the second, third and fourth thin film transistors have a double layer structure.

13. The device of claim **11**, wherein the second, third and fourth contact electrodes are formed of the same material as the reflective electrode.

14. The device of claim **11**, wherein the second, third and fourth contact holes pass through the source or drain electrode, the semiconductor pattern, the first insulating layer and the second conductive layers of the gate electrodes from the second insulation layer to expose the first conductive layers of the gate electrodes.

15. The device of claim **11**, wherein the second, third and fourth contact electrodes are formed in a sealant region.

16. The device of claim **11**, wherein the reflective electrode and the second, third and fourth contact electrodes have a double layer structure of AlNd and Mo.

17. The device of claim **1**, wherein the second insulation layer has an embossed surface.

18. The device of claim **17**, wherein the reflective electrode has an embossed surface.

* * * * *

专利名称(译)	透反液晶显示装置及其制造方法		
公开(公告)号	US20100195009A1	公开(公告)日	2010-08-05
申请号	US12/756319	申请日	2010-04-08
[标]申请(专利权)人(译)	AHN BYUNG CHUL 朴钟佑		
申请(专利权)人(译)	AHN BYUNG CHUL 朴钟佑		
当前申请(专利权)人(译)	LG DISPLAY CO. , LTD.		
[标]发明人	AHN BYUNG CHUL PARK JONG WOO		
发明人	AHN, BYUNG CHUL PARK, JONG WOO		
IPC分类号	G02F1/1343 G02F1/136 G02F1/1335 G02F1/1345 G02F1/1362 G02F1/1368 H01L29/786		
CPC分类号	G02F1/133555 G02F1/1362 G02F1/13458		
优先权	1020040041143 2004-06-05 KR		
其他公开文献	US8072565		
外部链接	Espacenet USPTO		

摘要(译)

提供一种液晶显示装置，包括：第一和第二基板；双层栅极线，在第一基板上具有第一透明导电层和第二不透明导电层；栅极线上的第一绝缘层；数据线与栅极线交叉以限定像素区域，该像素区域具有透射区域和反射区域；薄膜晶体管连接到栅极和数据线；像素电极，由像素区域中的透明导电层形成；上部存储电极通过将栅极线与其间的栅极绝缘膜重叠而形成存储电容器；透射孔，用于通过薄膜晶体管上的第二绝缘层到达第一绝缘层来暴露像素电极；反射电极，通过传输孔的边缘部分连接像素电极与漏电极和上存储电极；栅极焊盘，从栅极线的第一导电层延伸；数据焊盘，由第一导电层形成，并通过数据链路连接到数据线；以及在第一和第二基板之间的液晶层，其中在栅极和数据焊盘中去除第一和第二绝缘层。

