



(19) **United States**

(12) **Patent Application Publication** (10) **Pub. No.: US 2006/0139293 A1**
Cho (43) **Pub. Date: Jun. 29, 2006**

(54) **SHIFT REGISTER AND LIQUID CRYSTAL DISPLAY DEVICE USING THE SAME**

Publication Classification

(75) Inventor: **Nam Wook Cho, Gunpo-si (KR)**

(51) **Int. Cl.**
G09G 3/36 (2006.01)
(52) **U.S. Cl.** **345/100**

Correspondence Address:

BRINKS HOFER GILSON & LIONE
P.O. BOX 10395
CHICAGO, IL 60610 (US)

(57) **ABSTRACT**

A shift register and an LCD device to prevent the deterioration of a transistor by controlling a bias stress are disclosed. The shift register includes a plurality of stages for sequential shift signals, wherein each of the plurality of stages is connected with first and second supplying voltage input lines having opposite phases inverted by at least every frame, a start pulse input line, and at least one clock signal input line in which a phase of a first logic state is shifted in sequence, and a clock signal inputted to the clock signal input line is maintained in a second logic state different from the first logic state during a blanking time between frames.

(73) Assignee: **LG PHILIPS LCD CO., LTD**

(21) Appl. No.: **11/296,109**

(22) Filed: **Dec. 6, 2005**

(30) **Foreign Application Priority Data**

Dec. 29, 2004 (KR)..... P2004-114912

120

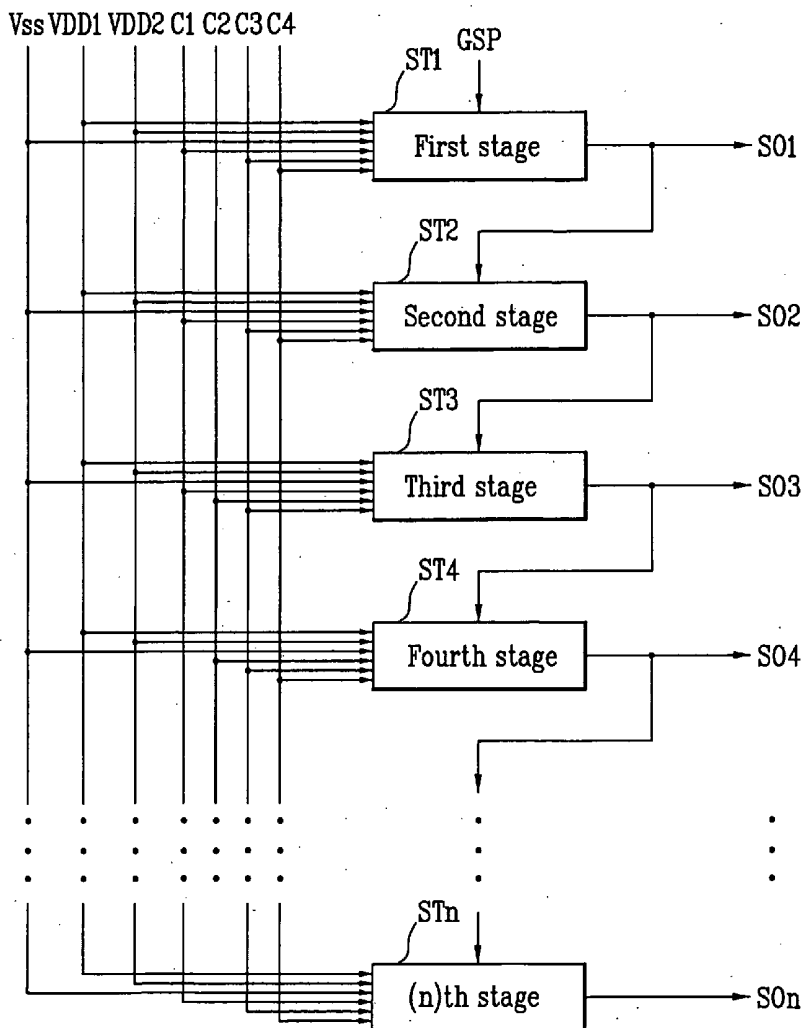


FIG. 1
Related Art

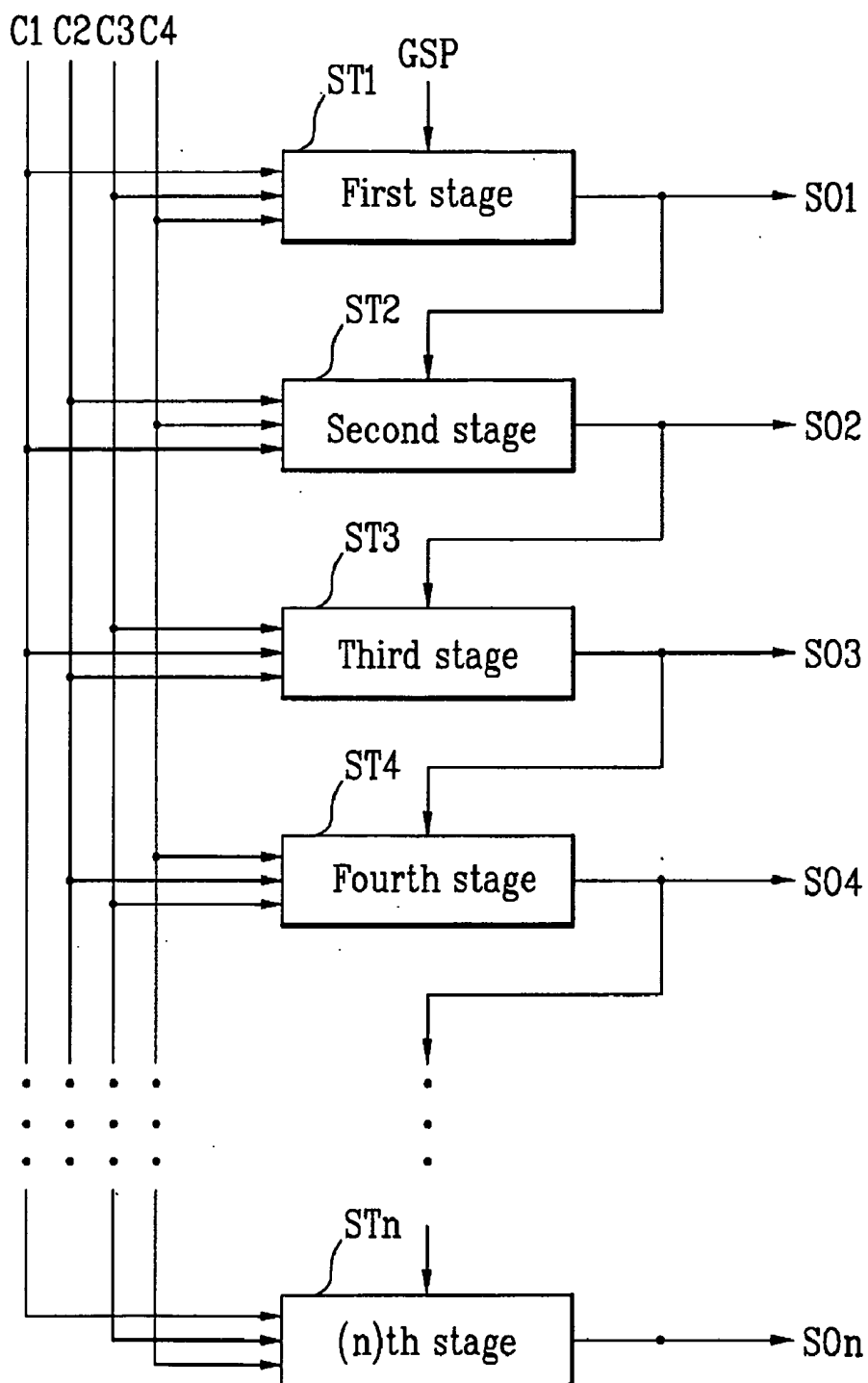


FIG. 2
Related Art

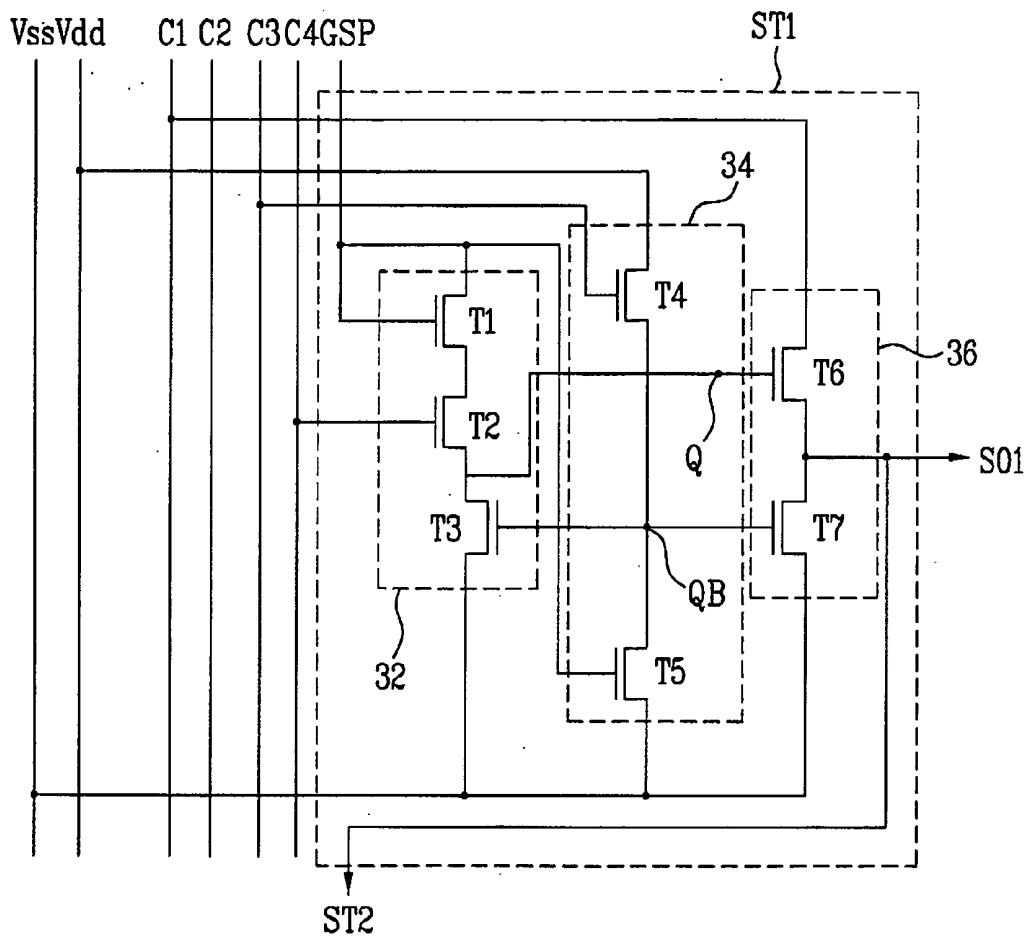


FIG. 3

Related Art

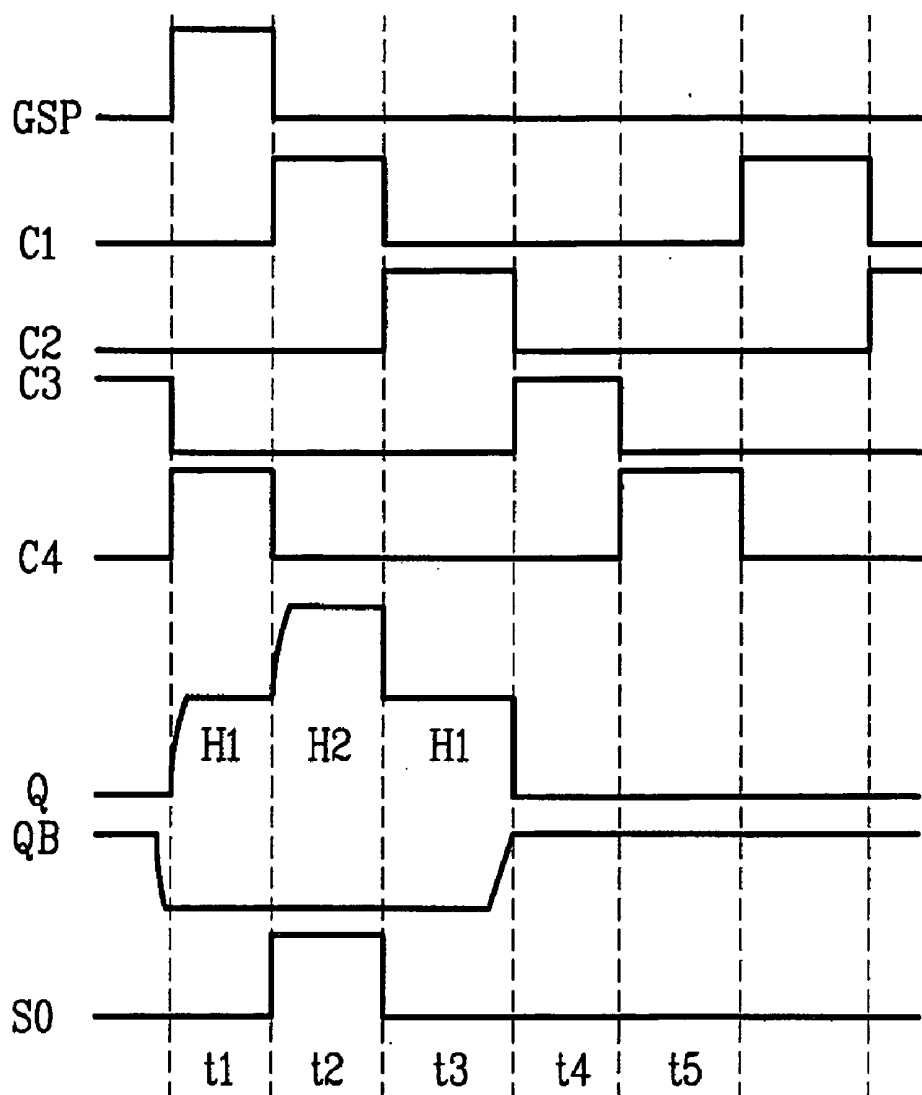


FIG. 4A
Related Art

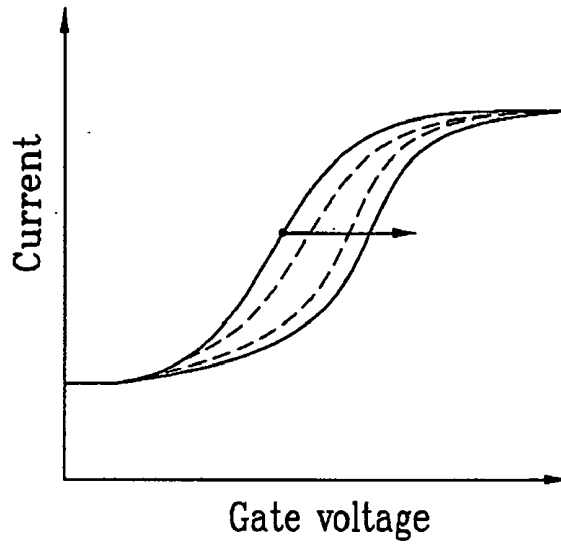


FIG. 4B
Related Art

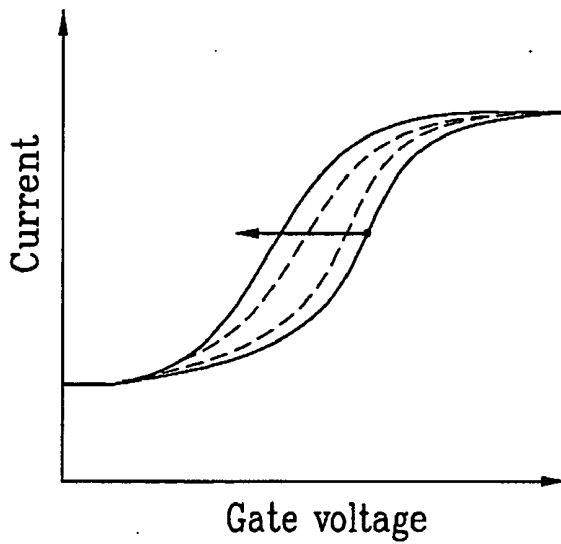


FIG. 5

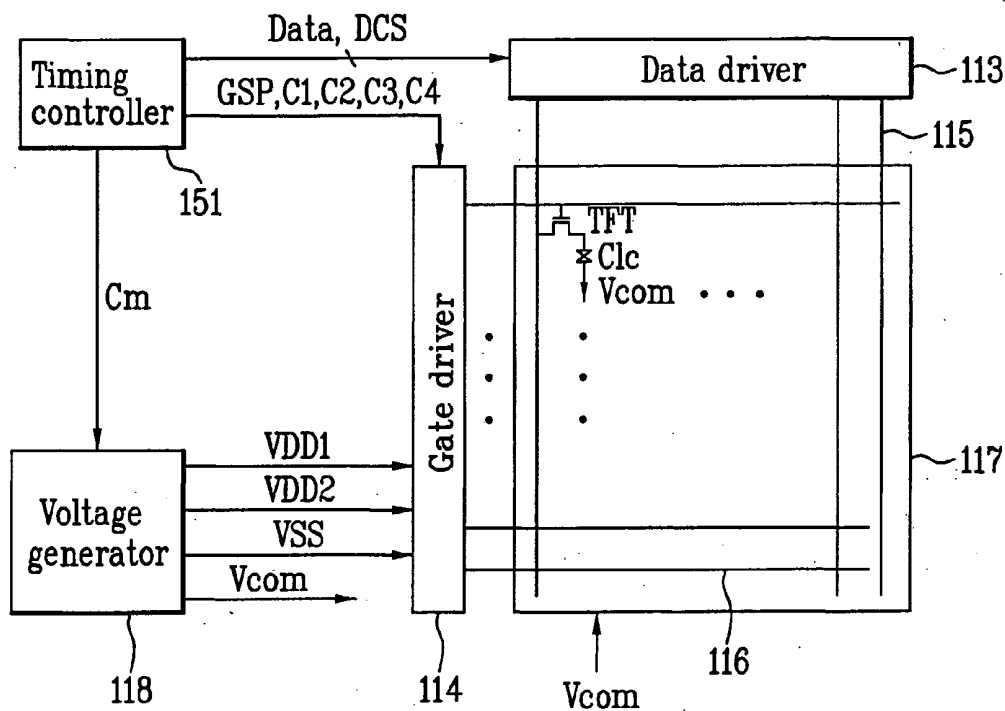


FIG. 6

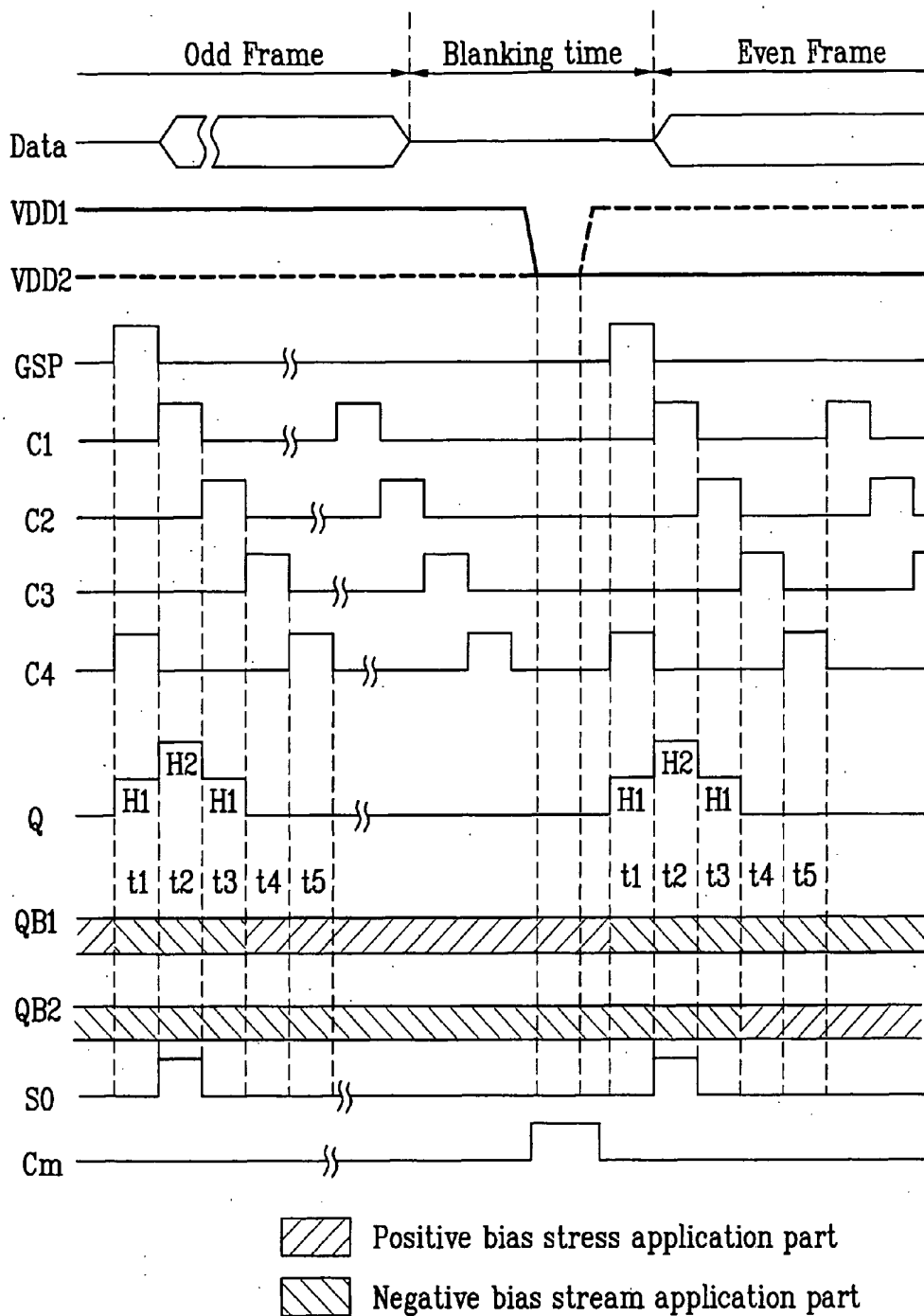


FIG. 7

120

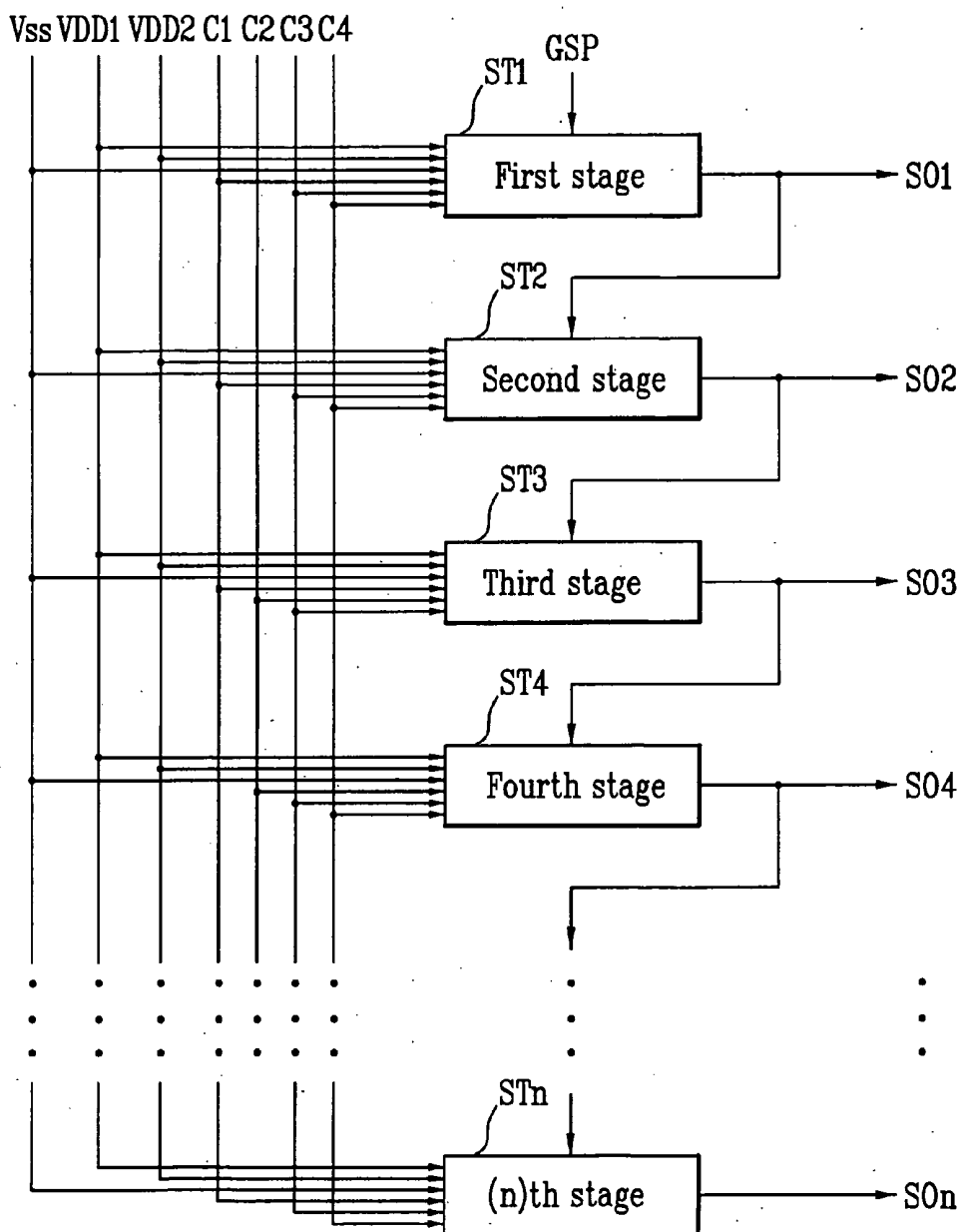


FIG. 8

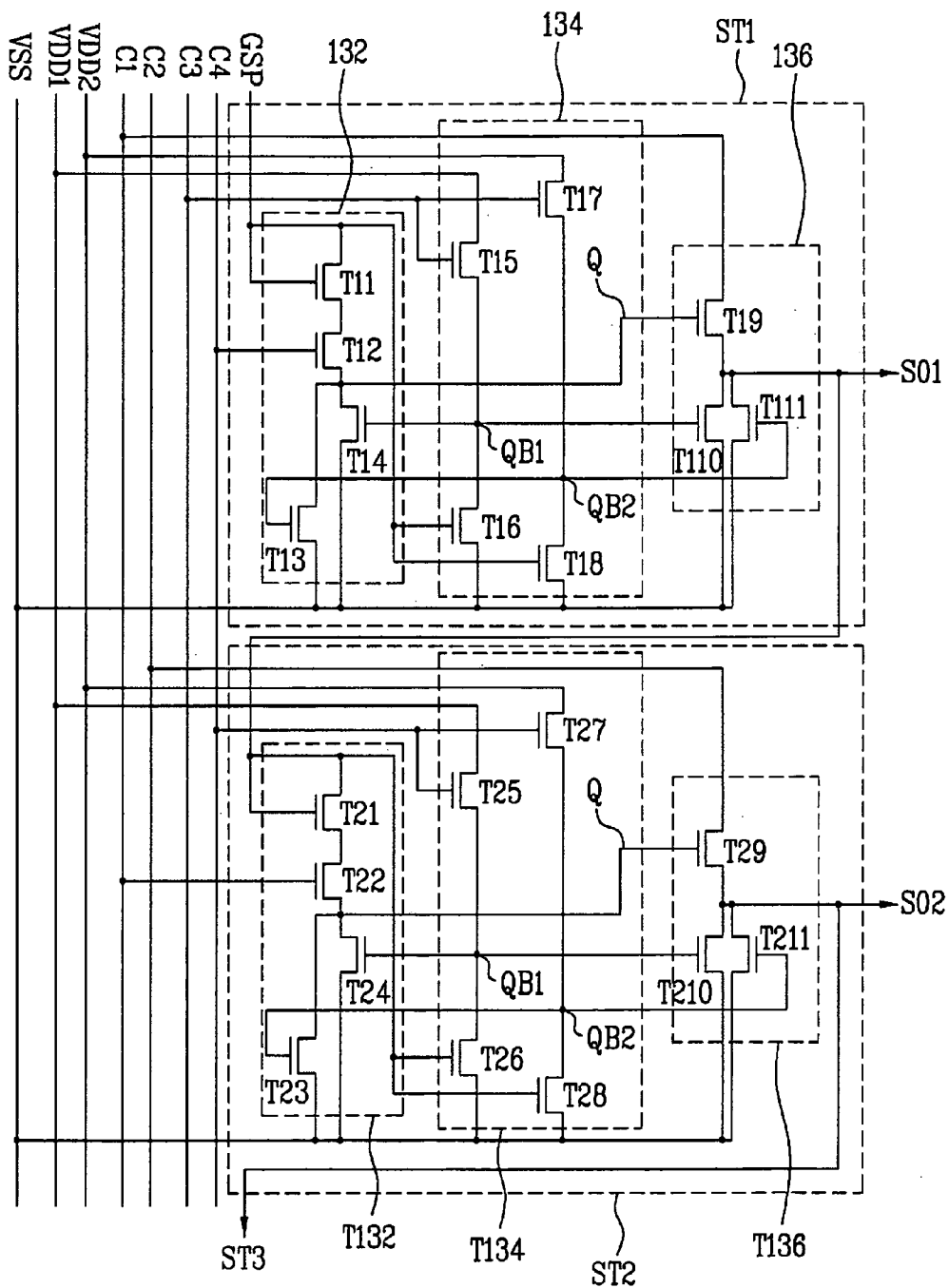


FIG. 9

220

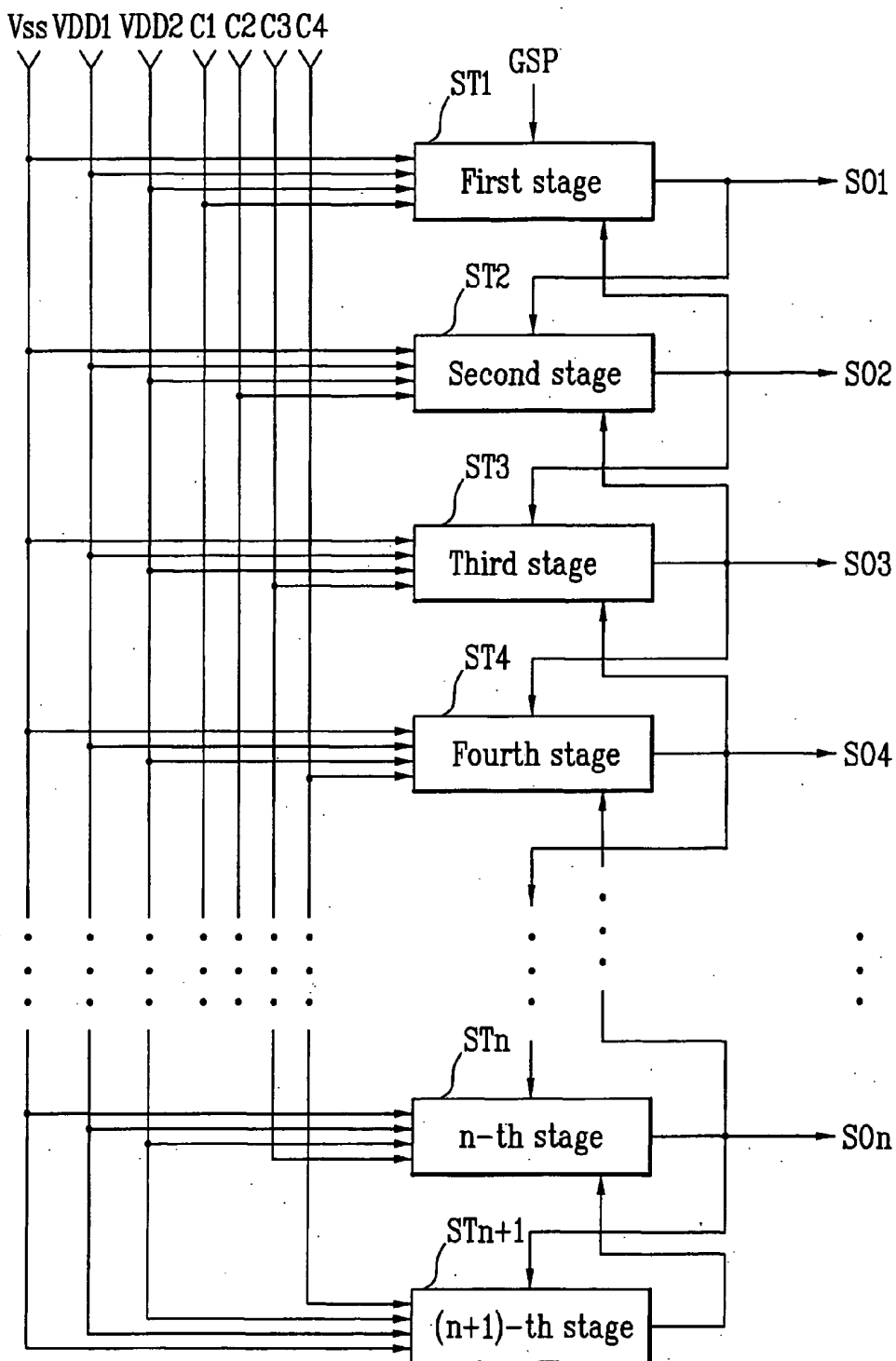


FIG. 10

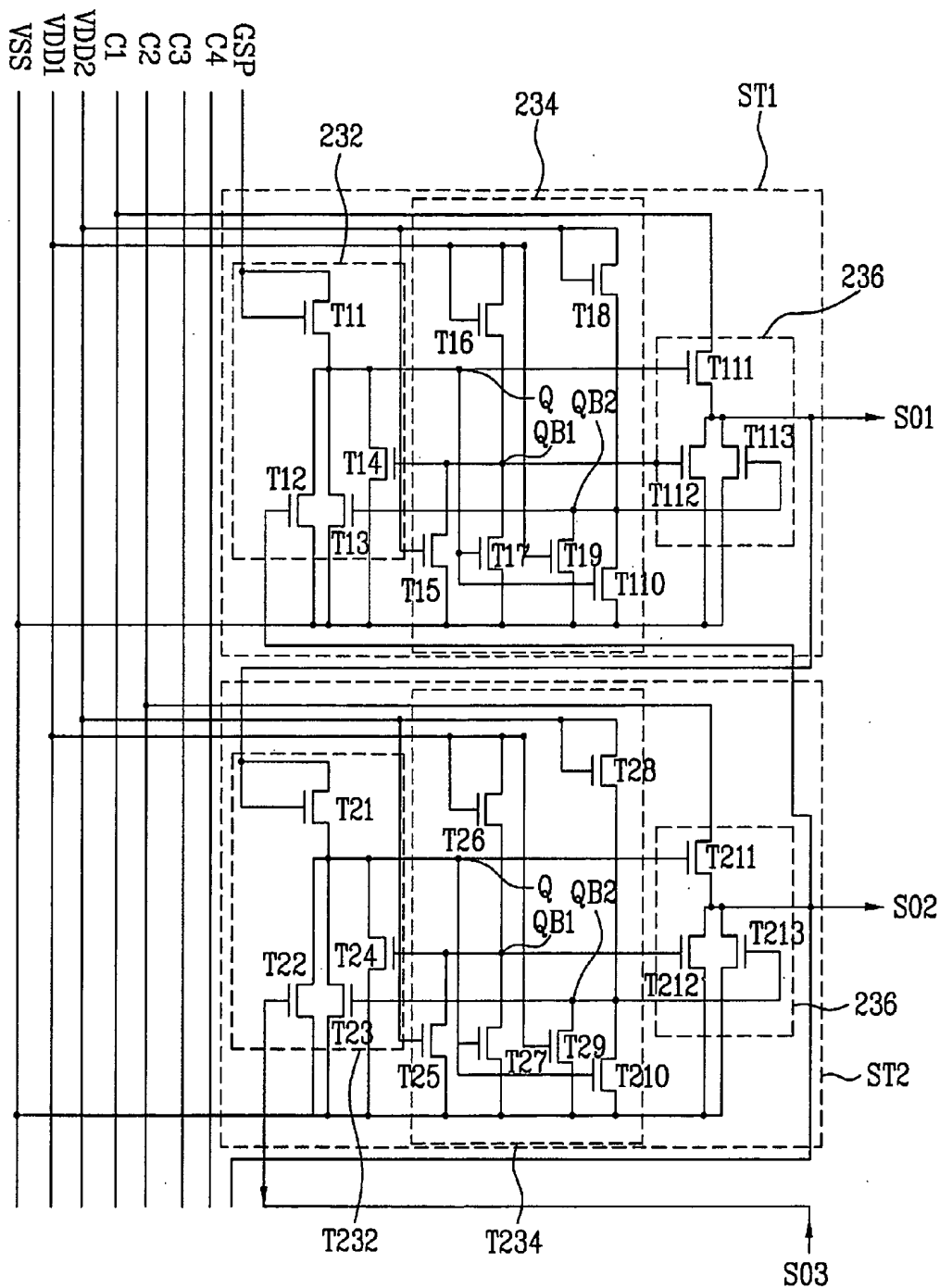
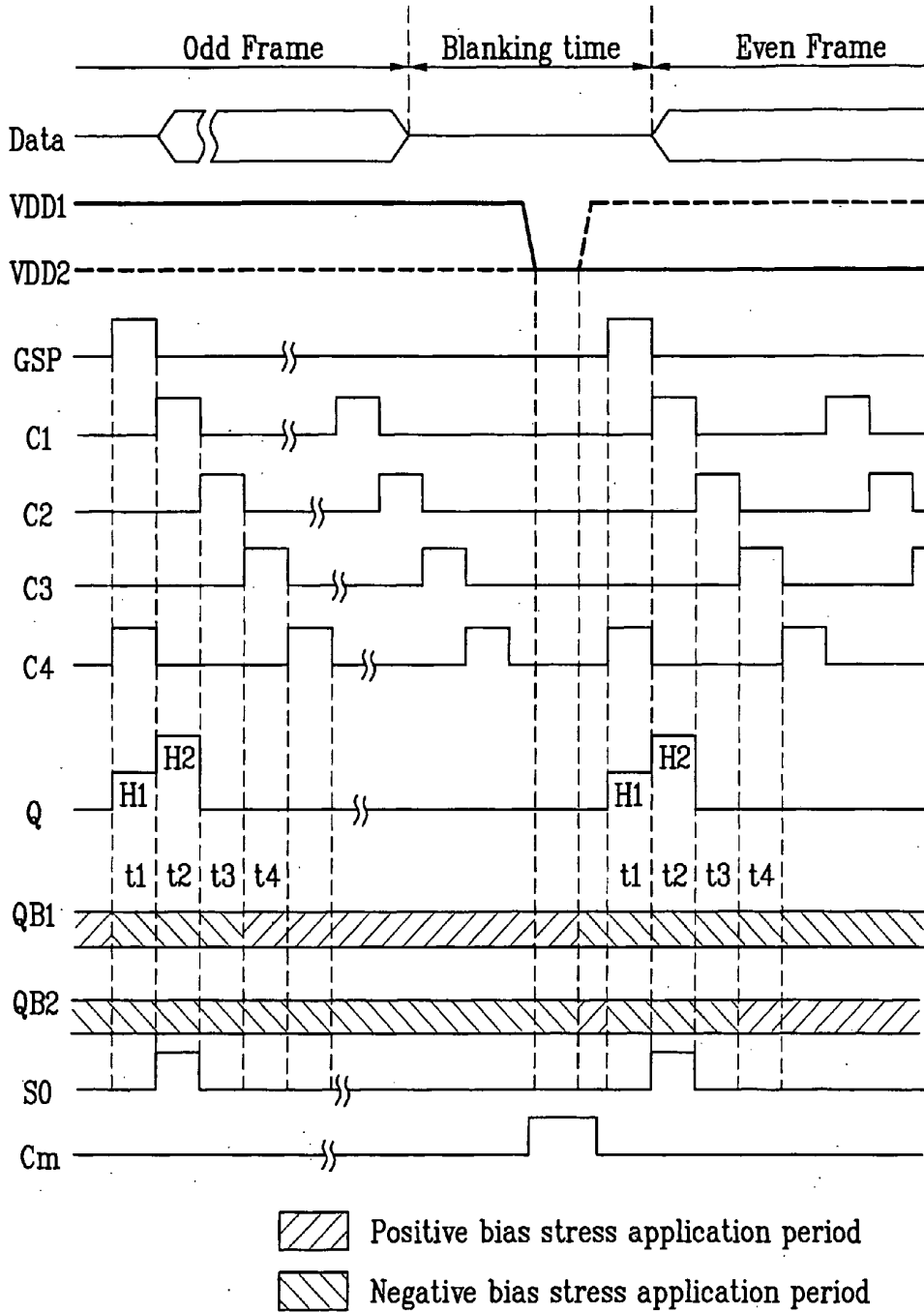


FIG. 11



SHIFT REGISTER AND LIQUID CRYSTAL DISPLAY DEVICE USING THE SAME

[0001] This application claims the benefit of the Korean Patent Application No. P2004-114912 filed on Dec. 29, 2004, which is hereby incorporated by reference as if fully set forth herein.

BACKGROUND OF THE INVENTION

[0002] 1. Field of the Invention

[0003] The present invention relates to a shift register and a liquid crystal display (LCD) device using the shift register, to prevent a bias stress applied to a transistor, thereby preventing the transistor from being deteriorated.

[0004] 2. Discussion of the Related Art

[0005] A Cathode Ray Tube (CRT), one of flat display devices, has been widely used for monitors of a television, a measuring machine and an information terminal. However, the CRT has limitations regarding both its size and weight. Accordingly, display devices such as a liquid crystal display (LCD) device, a field emission display (FED), a plasma display panel (PDP), and a light emitting display (LED) have been actively studied, which can substitute for the CRT.

[0006] The LCD device includes an LCD panel for displaying a picture image, and a driving circuit for applying a driving signal to the LCD panel.

[0007] The LCD panel includes a plurality of gate and data lines, wherein each of the gate lines is perpendicular to each of the data lines, to define a plurality of pixel regions which are provided with liquid crystal cells. The respective liquid crystal cells include pixel electrodes and common electrodes. The pixel electrodes are connected with any one of the data lines through source and drain terminals of thin film transistors which function as switching devices. Also, the gate terminal of the thin film transistor is connected with any one of the gate lines.

[0008] The driving circuit is comprised of a gate driver for driving the gate lines, and a data driver for driving the data lines. The gate driver sequentially supplies scan pulses to the gate lines, whereby the liquid crystal cells of the LCD panel are driven in sequence. The data driver supplies video signals to the data lines whenever the scan pulse is provided to any one of the gate lines. Accordingly, the LCD device displays images by controlling light-transmittance with an electric field applied between the pixel electrode and the common electrode according to the video signal applied to each of the liquid crystal cells.

[0009] The gate driver of the driving circuit uses a shift register so as to generate the scan pulses for sequentially driving the gate lines. Also, the data driver uses a shift register so as to generate sampling signals for sequentially sampling the inputted video signals by each clock. If the gate and data drivers, having the shift registers, are formed of polysilicon, they are mounted on the LCD panel.

[0010] FIG. 1 is a schematic view of showing a shift register according to the related art.

[0011] As shown in FIG. 1, a shift register according to the related art is comprised of 'n' stages ST1 to STn, which are connected with gate start pulse input lines, for receiving three clock signals among four clock signals C1 to C4. The

first to fourth clock signals C1 to C4 are phase-delayed by each clock, and then are supplied through the respective input lines in the order of C4, C1, C2 and C3. Also, a gate start pulse GSP is supplied in synchronization with the fourth clock signal C4 by each frame.

[0012] The first stage ST1 outputs a first output signal S01 using the gate start pulses and the three clock signals among the four clock signals C1 to C4. Then, the second to n-th stages ST2 to STn, respectively, output second to n-th output signals S02 to S0n using the output signal S01 to S0(n-1) outputted from the prior stage ST1 to ST(n-1) and the three clock signals among the four clock signals C1 to C4. That is, the first to n-th stages ST1 to STn sequentially output the first to n-th output signals S01 to S0n of which phases are shifted.

[0013] The first to n-th output signals S01 to S0n may be used with the scan pulses for sequentially driving the gate lines of the LCD panel, or may be used with the sampling signals for sequentially sampling the video signals of the data driver.

[0014] FIG. 2 is a circuit view showing the first stage ST1 of FIG. 1. Referring to FIG. 2, the first stage ST1 is comprised of a first controller 32, a second controller 34, and an output buffer 36. The first controller 32 controls a first node Q according to the fourth clock signal C4 and the gate start pulse GSP. The second controller 34 controls a second node QB according to the third clock signal C3 and the gate start pulse GSP. Also, the output buffer 36 selectively outputs any one of the first clock signal C1 and a first supplying voltage VSS according to the voltages of the first and second nodes Q and QB.

[0015] The first controller 32 includes a first transistor T1, a second transistor T2, and a third transistor T3. In detail, the first transistor T1 of a diode type is connected with the gate start pulse input line. The second transistor T2 is connected with the first transistor T1, the fourth clock signal input line, and the first node Q. The third transistor T3 is connected with the second transistor T2, the first supplying voltage VSS, and the second node QB.

[0016] The second controller 34 includes a fourth transistor T4, and a fifth transistor T5. At this time, the fourth transistor T4 is connected with the second supplying voltage VDD input line, the third clock signal C3 input line, and the second node QB. The fifth transistor T5 is connected with the second node QB, the gate start pulse GSP input line, and the first supplying voltage VSS input line.

[0017] The output buffer 36 includes a sixth transistor T6, and a seventh transistor T7. At this time, the sixth transistor T6 selectively supplies the first clock signal C1 to the output line according to the voltage of the first node Q. The seventh transistor T7 selectively supplies the first supplying voltage VSS to the output line according to the second node QB. The seventh transistor T7 operates with the third transistor T3 of the first controller 32 according to the voltage of the second node QB.

[0018] As shown in FIG. 1, the first, third and fourth clock signals C1, C3, and C4 are supplied to the first stage ST1. In FIG. 3, the gate start pulse GSP and the first to fourth clock signals C1 to C4 are supplied in a positive type which has a swing voltage of about 25V, at least above 10V. Supposing that a potential of 17V is in a high state, a

potential of $-8V$ is in a low state, the first supplying voltage VSS applied to the first stage ST1 is about $-8V$, and the second supplying voltage VDD is about $17V$.

[0019] An operation of the first stage ST1 will be explained with reference to the driving waveform. During a period of 't1', the gate start pulse GSP and the fourth clock signal C4 are in the high state, whereby the first and second transistors T1 and T2 are turned-on, and the first node Q is in a first high state H1. Accordingly, the sixth transistor T6 having the gate terminal connected with the first node Q is turned-on slowly. Thus, the third and seventh transistors T3 and T7 having the gate terminals connected with the second node QB are turned-off. In the period of 't1', the first clock signal C1 of low state is supplied to the output line of the first stage ST1 through the sixth transistor T6.

[0020] During a period of 't2', the gate start pulse GSP and the fourth clock signal C4 are in the low state, whereby the first clock signal C1 is in the high state. Thus, the first and second transistors T1 and T2 are turned-off, so that the sixth transistor T6 is turned-on. The first node Q is a floating state as the first and second transistors T1 and T2 are turned-off. Thus, the first node Q is bootstrapping according to the high-state voltage of the first clock signal C1 by a parasitic capacitance Cgs, generated between the gate and source terminals of the sixth transistor T6. Accordingly, the first node Q is in a second high state H2 which is higher than the first high state H1, whereby the sixth transistor T6 is turned on. As a result, the first clock signal C1 of the high state is supplied to the output line of the first stage ST1. Accordingly, the first stage ST1 outputs the output signal S01 of the high state.

[0021] During a period of 't3', the first clock signal C1 is in the low state, and the second clock signal C2 is in the high state, wherein the voltage of the first node Q of the floating state is switched to the first high state H1, and the sixth transistor T6 is maintained in the turning-on state. Accordingly, the first stage ST1 outputs the first clock signal C1 of the low state through the sixth transistor T6, in which the first clock signal is outputted as the output signal S01.

[0022] During a period of 't4', the third clock signal C3 is in the high state, whereby the fourth transistor T4 is turned-on. Thus, the second supplying voltage VDD is supplied to the second node QB. Accordingly, the third and seventh transistors T3 and T7 are turned-on at the same time. That is, the first supplying voltage VSS is supplied to the first node Q through the third transistor T3. The sixth transistor T6 is turned-off using the first supplying voltage VSS supplied to the first node Q. As a result, the first stage ST1 outputs the first supplying voltage VSS through the seventh transistor T7.

[0023] During a period of 't5', only the fourth clock signal C4 is in the high state, whereby the second transistor T2 is turned-on, and the first, fourth and fifth transistors T1, T4 and T5 are turned-off. Accordingly, the first and second nodes Q and QB are floating, whereby the first and second nodes Q and QB are maintained in the prior state. Thus, in the period of 't5', the third and seventh transistors T3 and T7 are turned-on, whereby the output signal S01 of the first stage ST1 outputs the first supplying voltage VSS in the same manner as the period 't4'.

[0024] Meanwhile, the second to n-th stages receive the output signals outputted from the prior stages ST1 to ST(n-

1) as the gate start pulse GSP, and also receives three clock signals among the first to fourth clock signals C1 to C4, and then outputs the output signals S02 to S0n. That is, the second to n-th stages are operated in the same method as the first stage ST1.

[0025] Among the transistors of the respective stages ST1 to STn, the third and seventh transistors T3 and T7 are operated according to the voltage of the second node QB. That is, when driving the third and seventh transistors T3 and T7, a bias stress is applied to the third and seventh transistors T3 and T7. That is, the bias stress is applied to the third and seventh transistors T3 and T7 except during the period of outputting the high-state signal in one frame.

[0026] The third and seventh transistors T3 and T7 are deteriorated due to the bias stress. Accordingly, as shown in FIG. 4A, if a positive bias stress is applied to the third and seventh transistors T3 and T7, the output-current characteristics are shifted to the right side according to the gate voltage. That is, as the output-current characteristics are shifted to the right side according to the gate voltage, the gate voltage must be increased in order to output the same-level current.

[0027] Meanwhile, as shown in FIG. 4B, if a negative bias stress is applied to the third and seventh transistors T3 and T7, the output-current characteristics are shifted to the left side according to the gate voltage. That is, as the output-current characteristics are shifted to the left side according to the gate voltage, the gate voltage must be increased in order to output the same-level current.

[0028] Also, the first to fourth clock signals C1 to C4 are sequentially applied to the respective stages ST1 to STn without regard to the frame. Thus, the third and seventh transistors T3 and T7 may deteriorate due to the bias stress by the clock signals C1 to C4.

[0029] To prevent the deterioration of a transistor, it is necessary to prevent the bias stress from being applied to the third and seventh transistors T3 and T7, which are connected with the second node QB of the respective stages ST1 to STn.

SUMMARY OF THE INVENTION

[0030] Accordingly, the present invention is directed to a shift register and an LCD device using the same. A shift register includes a plurality of stages for sequentially shifting signals. Each of the plurality of stages is connected with first and second supplying voltage input lines having opposite phases inverted by at least every frame, a start pulse input line, and at least one clock signal input line in which a phase of a first logic state is shifted in sequence. A clock signal inputted to the clock signal input line is maintained in a second logic state different from the first logic state during a blanking time between frames.

[0031] In another aspect of the present invention, an LCD device includes an LCD panel including liquid crystal cells in pixel regions defined by a plurality of gate and data lines. A data driver for supplying data to the data lines and a gate driver including a plurality of stages are included. Each of the stages are connected with a start pulse input line. A clock signal input line for sequentially shifting phases of a first logic state, generates scan pulses for driving the gate lines. A timing controller controls the data driver and the gate

driver, and generates a clock mask signal corresponding to a blanking time between frames. The clock signal is maintained in a second logic state different from the first logic state during the blanking time according to the clock mask signal.

[0032] It is to be understood that both the foregoing general description and the following detailed description of the present invention are exemplary and explanatory and are intended to provide further explanation of the invention as claimed.

BRIEF DESCRIPTION OF THE DRAWINGS

[0033] The accompanying drawings, which are included to provide a further understanding of the invention and are incorporated in and constitute a part of this application, illustrate embodiments of the invention and together with the description serve to explain the principle of the invention. In the drawings:

[0034] **FIG. 1** is a schematic view of showing a shift register according to the related art;

[0035] **FIG. 2** is a circuit view of showing a first stage in a shift register of **FIG. 1**;

[0036] **FIG. 3** is a waveform view of showing a driving waveform and an output signal;

[0037] **FIG. 4A** is a waveform view of showing a change of characteristics of a transistor generated by a positive bias stress;

[0038] **FIG. 4B** is a waveform view of showing a change on characteristics of a transistor generated by a negative bias stress;

[0039] **FIG. 5** is a schematic view of showing an LCD device according to a preferred embodiment of the present invention;

[0040] **FIG. 6** is a waveform view of a gate driver shown in **FIG. 5**;

[0041] **FIG. 7** is a schematic view showing a shift register according to a first embodiment of the present invention;

[0042] **FIG. 8** is a schematic view of first and second stages in a shift register shown in **FIG. 7**;

[0043] **FIG. 9** is a schematic view of showing a shift register according to a second embodiment of the present invention;

[0044] **FIG. 10** is a circuit view of first and second stages shown in **FIG. 9**; and

[0045] **FIG. 11** is a waveform view of operating respective stages shown in **FIG. 10**.

DETAILED DESCRIPTION OF THE INVENTION

[0046] Reference will now be made in detail to the embodiments of the present invention, examples of which are illustrated in the accompanying drawings. Wherever possible, the same reference numbers will be used throughout the drawings to refer to the same or like parts.

[0047] Hereinafter, a shift register and an LCD device using the same according to the present invention will be described with reference to the accompanying drawings.

[0048] **FIG. 5** is a schematic view of showing an LCD device according to a preferred embodiment of the present invention. **FIG. 6** is a waveform view of a gate driver shown in **FIG. 5**.

[0049] As shown in **FIG. 5** and **FIG. 6**, an LCD device according to a preferred embodiment of the present invention includes an LCD panel **117**, a data driver **113**, a gate driver **114**, a timing controller **151**, and a voltage generator **118**.

[0050] The LCD panel includes a plurality of gate and data lines, wherein each of the gate lines **116** are perpendicular to each of the data lines **115**, to define a plurality of pixel regions which are provided with liquid crystal cells **C1c**. The data driver **113** supplies data to the data lines **115**. The gate driver **114** generates scan pulses supplied to the gate lines **116** during frames, but not a blanking block between the frames. The timing controller **151** generates a clock mask signal **Cm** corresponding with the blanking block, and controls the data driver **113** and the gate driver **114**. Also, the voltage generator **118** inverses first and second supplying voltage **VDD1** and **VDD2** according to the clock mask signal **Cm**, and then supplies the inversed first and second supplying voltages **VDD1** and **VDD2** to the gate driver **118**.

[0051] The LCD panel **117** is comprised of lower and upper glass substrates facing each other, and a liquid crystal layer formed between the lower and upper glass substrates. On the lower glass substrates, the gate lines **116** are formed in perpendicular to the data lines **115**. Also, thin film transistors are formed at respective intersections of the gate and data lines. The thin film transistors supply data of the data lines **115** to the liquid crystal cells **C1c** in response to the scan pulses supplied to the gate lines **116**. For this, a gate electrode of the thin film transistor is connected with the gate line **116**, and a source electrode of the thin film transistor is connected with the data line **115**. Also, a drain electrode of the thin film transistor is connected with the pixel electrode of the liquid crystal cell **C1c**.

[0052] Although not shown, the timing controller **151** re-aligns digital data outputted from a digital video card, and supplies the re-aligned digital data to the data driver **113**. Also, the timing controller **151** generates a data control signal **DCS** for controlling the data driver **113** with horizontally and vertically synchronized signals **H** and **V** (not shown), and the data control signal **DCS**. In addition, the timing controller **151** generates the clock mask signal **Cm** in correspondence with the blanking time between the frames using horizontally and vertically synchronized signals **H** and **V**, and then supplies the clock mask signal **Cm** to the voltage generator **118**. The clock mask signal **Cm** has a first logic state at one period of the blanking time, and also has a second logic state at the remaining period of the blanking time, wherein the second logic state is different from the first logic state. The clock mask signal **Cm** of the first logic state may be generated at least once per frame.

[0053] The timing controller **151** generates gate control signals including a gate start pulse **GSP**, first to fourth clock signals **C1** to **C4** for controlling the gate driver **114** using the horizontally and vertically synchronized signals **H** and **V**.

Each of the first to fourth clock signals C1 to C4 is phase-delayed by one clock cycle in the first logic state, whereby the first to fourth clock signals C1 to C4 are supplied in the order of C4, C1, C2 and C3 through the input lines. Also, the gate start pulse GSP, provided by each frame, is supplied in synchronization with the fourth clock signal C4. The timing controller 151 prevents the first to fourth clock signals C1 to C4 supplied to the gate driver 114 during the period of the first logic state of the clock mask signal Cm generated in the timing controller 151. That is, the timing controller 151 stops the operation of the gate driver 114 during the period of the second logic state of the clock mask signal Cm. However, the timing controller 151 generates the first to fourth clock signals C1 to C4 during the period of the first logic state, and then supplies the first to fourth clock signals C1 to C4 to the gate driver 114.

[0054] The voltage generator 118 generates all the voltages for operating the LCD device including the timing controller 151, the gate driver 114 and the data driver 113. Also, the voltage generator 118 generates the first and second supplying voltages VDD1 and VDD2 which are different from each other. Further, the voltage generator 118 inverses and provides the generated first and second supplying voltages VDD1 and VDD2 according to the clock mask signal Cm supplied from the timing controller 151. The voltage generator 118 generates the third supplying voltage VSS which is different from the first and second supplying voltages VDD1 and VDD2, and then supplies the generated third supplying voltage to the gate driver 114. Also, the voltage generator 118 generates the common voltage Vcom, and supplies the generated common voltage to the LCD panel 117.

[0055] The data driver 113 samples the data supplied from the timing controller 151 according to the data control signal DCS, and latches the sampled data by each one line, and then converts the latched data to analog data corresponding to positive and negative gamma voltages. Then, the data driver 113 supplies the analog data, which is converted according to the data control signal DCS supplied from the timing controller 151, to the data lines 115 of the LCD panel 117.

[0056] The gate driver 114 includes a shift register and a level shifter. The shift register of the gate driver 114 sequentially generates scan pulses, that is, gate high pulses, according to the gate start pulse GSP and the first to fourth clock signals C1 to C4. The level shifter shifts the voltage of scan pulse to be suitable for operating the liquid crystal cell C1c. In response to the scan pulse, the thin film transistor TFT is turned-on. When the thin film transistor is turned-on, the analog data of the data line 115 is supplied to the pixel electrode of the liquid crystal cell C1c. The gate driver 114 stops the operation during some sections of the blanking time according to the first to fourth clocks C1 to C4 supplied in the second logic state from the timing controller 151.

[0057] FIG. 7 is the schematic view showing the shift register 120 of the gate driver 114 shown in FIG. 5. Referring to FIG. 7, the shift register 120 according to a first embodiment of the present invention is comprised of 'n' stages ST1 to STn which are connected with gate start pulse input lines, for receiving three clock signals among four clock signals C1 to C4 and the first to third supplying voltages VDD1, VDD2, and VSS outputted from the voltage generator 118.

[0058] The first stage ST1 outputs a first output signal S01 using the gate start pulse GSP and three clock signals among the four clock signals C1 to C4, such as C1, C3, and C4. Then, the second to n-th stages ST2 to STn respectively output second to n-th output signals S02 to S0n using the output signal S01 to S0(n-1) outputted from each prior stage ST1 to ST(n-1) and three clock signals among the four clock signals C1 to C4. That is, the first to n-th stages ST1 to STn sequentially output the first to n-th output signals S01 to S0n of which phases are shifted.

[0059] The first to n-th output signals S01 to S0n may be used with the scan pulses for sequentially driving the gate lines 116 of the LCD panel 117, or may be used with the sampling signals for sequentially sampling digital data of the data driver 113.

[0060] FIG. 8 is a detailed circuit view of the first and second stages ST1 and ST2 among 'n' stages shown in FIG. 7.

[0061] Referring to FIG. 8, the first stage ST1 includes a first controller 132, a second controller 134, and an output buffer 136. At this time, the first controller 132 controls a first node Q according to the gate start pulse GSP and the fourth clock signal C4. Then, the second controller 134 controls a second node QB1 and a third node QB2 according to first and second supplying voltages VDD1 and VDD2 using the third clock signal C3 and the gate start pulse GSP. Also, the output buffer 136 selectively outputs any one of the first clock signal C1 and a third supplying voltage VSS according to the voltages of the first, second and third nodes Q, QB1 and QB2.

[0062] The first controller 132 includes a first transistor T11, a second transistor T12, a third transistor T13, and a fourth transistor T14. The first transistor T11 of a diode type is connected with the gate start pulse GSP input line. The second transistor T12 is connected with the first transistor T11, the fourth clock signal C4 input line, and the first node Q. The third transistor T13 is connected with the first node Q, the third supplying voltage VSS input line, and the third node QB2. The fourth transistor T14 is connected with the first node Q, the third supplying voltage VSS input line, and the second node QB1.

[0063] The second controller 134 includes a fifth transistor T15, a sixth transistor T16, a seventh transistor T17, and an eighth transistor T18. The fifth transistor is connected with the first supplying voltage VDD1 input line, the third clock signal C3 input line, and the second node QB1. The sixth transistor T16 is connected with the second node QB1, the gate start pulse GSP input line, and the third supplying voltage VSS input line. The seventh transistor T17 is connected with the second supplying voltage VDD2 input line, the third clock signal C3 input line, and the third node QB2. The eighth transistor T18 is connected with the third node QB2, the gate start pulse GSP input line, and the third supplying voltage VSS input line.

[0064] The output buffer 136 includes a ninth transistor T19, a tenth transistor T110, and an eleventh transistor T111. The ninth transistor T19 selects the first clock signal C1 according to the voltage of the first node Q, and supplies the selected signal to the output line. The tenth transistor T110 selects the third supplying voltage VSS according to the voltage of the second node QB1, and supplies the selected

voltage to the output line. Then, the eleventh transistor T111 selects the third supplying voltage VSS according to the voltage of the third node QB2, and supplies the selected voltage to the output line. In this case, the tenth transistor T110 operates in a dual mode with the fourth transistor T14 of the first controller 132 according to the voltage of the second node QB1. The eleventh transistor T111 operates in a dual mode with the third transistor T13 of the first controller 132 according to the voltage of the third node QB2.

[0065] An operation of the first stage ST1 is described with reference to FIG. 6. In FIG. 6, the first to fourth clock signals C1 to C4 as well as the gate start pulse GSP are provided in a positive type having a swing voltage above 10V, preferably, 25V. For convenience of this explanation, it will be assumed that a potential of 17V is a high state, and a potential of -8V is a low state. Also, the third supplying voltage VSS supplied to the first stage ST1 is about -8V, the first supplying voltage VDD1 is in the high stage of about 17V, and the second supplying voltage VDD2 is in the low state of about -8V. In this state, the first and second supplying voltages VDD1 and VDD2 have the voltages of the opposite phases since the voltage generator 118 inverts the phases of the first and second supplying voltages VDD1 and VDD2 by each frame according to the clock mask signal Cm.

[0066] During a period of 't1' of an odd-numbered frame, the gate start pulse GSP and the fourth clock signal C4 are in the high state, and the first and second transistors T11 and T12 are turned-on, whereby the first node Q is a first high state H1. Accordingly, the ninth transistor T19 having a gate terminal connected with the first node Q is turned-on slowly. Also, the sixth and eighth transistors T16 and T18 are turned-on by the gate start pulse GSP of the high state, so that the third supplying voltage VSS is supplied to the second node QB1 and the third node QB2. Thus, the fourth and tenth transistors T14 and T110 having gate terminals connected with the second node QB1 are turned-off, and also the third and eleventh transistors T13 and T111 having gate terminals connected with the third node QB2 are turned-off. That is, during the period of 't1', the first clock signal C1 of the low state is supplied to the output line of the first stage ST1 through the ninth transistor T19.

[0067] During the period of 't2' of an odd-numbered frame, the gate start pulse GSP and the fourth clock signal C4 are in the low state, and the first clock signal C1 is in the high state, whereby the first and second transistors T11 and T12 are turned-off, and the ninth transistor T19 is turned-on.

[0068] The first node Q is in a floating state as the first and second transistors T11 and T12 are turned-off. Thus, the first node Q is bootstrapping according to the first clock signal C1 of the high state by a parasitic capacitance Cgs generated between gate and source of the ninth transistor T19. Thus, the first node Q is in a second high state H2, wherein the second high state H2 is higher than the first high state H1, whereby the ninth transistor T19 is turned-on accordingly. As the ninth transistor T19 is turned-on, the first clock signal C1 of the high state is supplied to the output line of the first stage ST1. That is, the first stage ST1 outputs the output signal S01 of the high state.

[0069] During a period 't3' of an odd-numbered frame, the first clock signal C1 is in the low state, and the second clock

signal C2 is in the high state. The voltage of the first node Q, which is in the floating state, is transited to the first high state Hi, and the ninth transistor T19 is maintained in the turn-on state. Accordingly, the first stage ST1 outputs the first clock signal C1 of the low state as the output signal S01 through the turned-on ninth transistor T19.

[0070] During a period of 't4' of an odd-numbered frame, the third clock signal C3 is in the high state, whereby the fifth and seventh transistors T15 and T17 are turned-on. Thus, the first supplying voltage VDD1 of the high state is supplied to the second node QB1, and the second supplying voltage VDD2 of the low state is supplied to the third node QB2. Thus, the fourth and tenth transistors T14 and T110 are turned-on together by the first supplying voltage VDD1 of the high state supplied to the second node QB1, whereby the third supplying voltage VSS is supplied to the first node Q through the fourth transistor T14. When the third supplying voltage VSS supplied to the first node Q, the ninth transistor T19 is turned-off. Accordingly, the first stage ST1 outputs the third supplying voltage VSS as the output signal S01 through the tenth transistor T110. The third and eleventh transistors T13 and T111 are maintained in the turn-off state by the second supplying voltage VDD2 of the low state supplied to the third node QB2. Also, a negative bias stress is applied to the third and eleventh transistors T13 and T111 by the second supplying voltage VDD2 of the low state.

[0071] During a period of 't5' of an odd-numbered frame, only the fourth clock signal C4 is in the high state. Thus, the second transistor T12 is turned-on. Except the fourth and tenth transistors T14 and T110, the other transistors T11, T13, T15, T16, T17, T18, T19 and T111 are turned-off. Accordingly, the first node Q and the second node QB1 are floating. In the period of 't5', the fourth and tenth transistors T14 and T10 are turned-on in the same manner as in the period 't4', whereby the first stage ST1 outputs the third supplying voltage VSS as the output signal S01 through the tenth transistor T110.

[0072] The second stage ST2 is the same in structure as the first stage ST1. The second stage ST2 receives the output signal S01 outputted from the first stage ST1 as the gate start pulse GSP, and also receives the first, second and fourth clock signals C1, C2 and C4 among the first to fourth clock signals C1 to C4. In the same mode as the first stage ST1, the second stage ST2 outputs the output signal S02 by operating the respective transistors T21, T22, T23, T24, T25, T26, T27, T28, T29, T210 and T211. Each of the third to 'n' stages ST3 to STn receives the output signal outputted from each of the prior stages ST2 to ST(n-1) as the gate start pulse GSP, and also receives three clock signals among the four clock signals C1 to C4. That is, each of the third to 'n' stages operates in the same manner as the first stage ST1.

[0073] During the odd-numbered frame, each of 'n' stages ST1 to STn outputs the output signal SO using three clock signals among the first to fourth clock signals C1 to C4, the first supplying voltage VDD1 of the high stage, and the second supplying voltage VDD2 of the low state.

[0074] To maintain the low state in the output lines of the respective stages ST1 to STn during the odd-numbered frame, the positive bias stress is applied to the fourth and tenth transistors (Ti4 and Ti10: 'i' is a positive number from 1 to 'n') operated in the dual mode by the first supplying voltage VDD1 of the high state. Likewise, the negative bias

stress is applied to the third and eleventh transistors (T_{i3} and T_{i11}) by the second supplying voltage VSS₂ of the low state.

[0075] After outputting the signal from each of 'n' stages ST₁ to ST_n, the first to fourth clock signals C₁ to C₄ are in the low state by the clock mask signal C_m in some period of the blanking time which corresponds to the interval between the frames, whereby it is possible to prevent the bias stress from being applied to the respective transistors T. In the shift register and the LCD device according to a preferred embodiment of the present invention, it is possible to prevent the bias stress from being applied to the transistor by the continuous logic change of the clock signals C₁ to C₄, and to prevent the transistor from being deteriorated.

[0076] During some sections of the blanking time, the first supplying voltage VDD₁ of the high state, supplied to the shift register 120, is inverted to the low state, and the second supplying voltage VDD₂ of the low state is inverted to the high state.

[0077] The signals in the periods of 't₁', 't₂' and 't₃' of the even-numbered frames are outputted in the same method as the signals in the periods of 't₁', 't₂' and 't₃' of the odd-numbered frames.

[0078] During a period of 't₄' of an even-numbered frame, the third clock signal C₃ is in the high state, and the fifth and seventh transistors T₁₅ and T₁₇ are turned-on. Thus, the first supplying voltage VDD₁ of the low state is supplied to the second node QB₁, and the second supplying voltage of the high state is supplied to the third node QB₂. Thus, the third and eleventh transistors T₁₃ and T₁₁₁ are turned-on at the same time by the second supplying voltage VDD₂ of the high state, which is supplied to the third node QB₂. As a result, the third supplying voltage VSS is supplied to the first node Q through the third transistor T₁₃. By the third supplying voltage VSS supplied to the first node Q, the ninth transistor T₁₉ is turned-off. Accordingly, the first stage ST₁ outputs the third supplying voltage VSS as the output signal S₀₁ through the eleventh transistor T₁₁₁. At this time, the fourth and tenth transistors T₁₄ and T₁₁₀ are maintained in the turn-off state by the first supplying voltage VDD₁ of the low state which is supplied to the second node QB₁, and the negative bias stress is applied to the fourth and tenth transistors T₁₄ and T₁₁₀ by the first supplying voltage VDD₁.

[0079] During a period of 't₅' of an even-numbered frame, only the fourth clock signal C₄ is in the high state, whereby the second transistor T₁₂ is turned-on, and the other transistors T₁₁, T₁₄, T₁₅, T₁₆, T₁₇, T₁₈, T₁₉ and T₁₁₀ except the third and eleventh transistors T₁₃ and T₁₁₁ are maintained in the turned-off state. Accordingly, the first node Q and the third node QB₂ are floating. In the period of 't₅', the third and eleventh transistors T₁₃ and T₁₁₁ are turned-on. That is, the first stage ST₁ outputs the third supplying voltage VSS as the output signal S₀₁ through the eleventh transistor T₁₁₁.

[0080] The second stage ST₂ is the same in structure as the first stage ST₁. The second stage ST₂ receives the output signal S₀₁ outputted from the first stage ST₁ as the gate start pulse GSP, and also receives the first, second and fourth clock signals C₁, C₂ and C₄ among the first to fourth clock signals C₁ to C₄. In the same mode as the first stage ST₁, the second stage ST₂ outputs the output signal S₀₂ by

operating the respective transistors T₂₁, T₂₂, T₂₃, T₂₄, T₂₅, T₂₆, T₂₇, T₂₈, T₂₉, T₂₁₀ and T₂₁₁. Also, each of the third to 'n' stages ST₃ to ST_n receives the output signal outputted from each of the prior stages ST₂ to ST_(n-1) as the gate start pulse GSP, and also receives the three clock signals among the four clock signals C₁ to C₄. That is, each of the third to 'n' stages operates in the same manner as the first stage ST₁.

[0081] During the even-numbered frame, each of 'n' stages ST₁ to ST_n outputs the output signal S₀ using three clock signals among the first to fourth clock signals C₁ to C₄, the first supplying voltage VDD₁ of the low state, and the second supplying voltage VDD₂ of the high state.

[0082] To maintain the low state in the output lines of the respective stages ST₁ to ST_n during the even-numbered frame, the negative bias stress is applied to the fourth and tenth transistors (T_{i4} and T_{i10}: 'i' is a positive number from 1 to 'n') operated in the dual mode by the first supplying voltage VDD₁ of the low state. Meanwhile, the positive bias stress is applied to the third and eleventh transistors (T_{i3} and T_{i11}) by the second supplying voltage VSS₂ of the high state.

[0083] In the shift register and the LCD device according to a first embodiment of the present invention, the first and second supplying voltages VDD₁ and VDD₂ are inverted in the blanking time, and the logic change of the clock signals C₁, C₂, C₃ and C₄ is prevented. Accordingly, the positive and negative bias stresses are alternately applied to the third and eleventh transistors T_{i3} and T_{i11} (or the fourth and tenth transistors T_{i4} and T_{i10}) for each frame. Accordingly, it is possible to prevent the third and eleventh transistors T_{i3} and T_{i11} (or the fourth and tenth transistors T_{i4} and T_{i10}) from being deteriorated due to the bias stress, and to prevent the stress generated by the logic change of the clock signals C₁, C₂, C₃ and C₄.

[0084] FIG. 9 is a schematic view showing a shift register according to a second embodiment of the present invention. Referring to FIG. 9, a shift register according to a second embodiment of the present invention is comprised of 'n+1' stages ST₁ to ST_{n+1} connected with gate start pulse input lines, wherein the stage receives one clock signal among first to fourth clock signals C₁ to C₄, and first to third supplying voltage VDD₁, VDD₂ and VSS generated from a voltage generator 118.

[0085] The first stage ST₁ outputs a first output signal S₀₁ using a gate start pulse GSP, an output signal S₀₂ outputted from the second stage ST₂, and one clock signal among the first to fourth clock signals C₁ to C₄. Also, the second to n-th stages ST₂ to ST_n respectively output second to n-th output signals S₀₂ to S_{0n} using output signals S₀₁ to S_{0n-1} outputted from the preceding stages ST₁ to ST_(n-1), output signals S₀₃ to S_{0(n+1)} outputted from the following stages S₀₃ to S_{0n+1}, and one clock signal among the four clock signals C₁ to C₄. That is, the first to n-th stages ST₁ to ST_n sequentially output the first to n-th output signals S₀₁ to S_{0n} of which phases are shifted.

[0086] The first to n-th output signals S₀₁ to S_{0n} may be scan pulses for sequentially driving gate lines 116 of an LCD panel 117, or may be sampling signals for sequentially sampling digital data of a data driver 113.

[0087] FIG. 10 is a detailed circuit view of the first and second stages ST₁ and ST₂ among 'n' stages shown in FIG. 9.

[0088] Referring to FIG. 10, the first stage ST1 includes a first controller 232, a second controller 234, and an output buffer 236. The first controller 232 controls a first node Q according to the gate start pulse GSP and the output signal S02 outputted from the second stage ST2. Then, the second controller 234 controls a second node QB1 and a third node QB2 according to a voltage of the first node Q and first and second supplying voltages VDD1 and VDD2. The output buffer 236 selectively outputs any one of the first clock signal C1 and a third supplying voltage VSS to an output line according to the voltages of the first, second and third nodes Q, QB1 and QB2.

[0089] The first controller 232 includes a first transistor T11, a second transistor T12, a third transistor T13, and a fourth transistor T14. In detail, the first transistor T11 of a diode type is connected with the gate start pulse GSP input line. The second transistor T12 is connected with the first node Q, a third supplying voltage VSS input line, and an output signal S02 input line of the second stage ST2. The third transistor T13 is connected with the first node Q, the third supplying voltage VSS input line, and the third node QB2. Then, the fourth transistor T14 is connected with the first node Q, the third supplying voltage VSS input line, and the second node QB1.

[0090] The second controller 234 includes a fifth transistor T15, a sixth transistor T16, a seventh transistor T17, an eighth transistor T18, a ninth transistor T19, and a tenth transistor T110. At this time, the fifth transistor T15 is connected with the second node QB1, the third supplying voltage VSS input line, and a second supplying voltage VDD2 input line. The sixth transistor T16 is connected with the first supplying voltage VDD1 input line in a diode type, and is also connected with the second node QB1. The seventh transistor T17 is connected with the second node QB1, the third supplying voltage VSS input line, and the first node Q. The eighth transistor T18 is connected with the second supplying voltage VDD2 input line in a diode type, and is also connected with the third node QB2. The ninth transistor T19 is connected with the third node QB2, the third supplying voltage VSS input line, and the first supplying voltage VDD1 input line. The tenth transistor T110 is connected with the third node QB2, the third supplying voltage VSS input line, and the first node Q.

[0091] The output buffer 236 includes an eleventh transistor T111, a twelfth transistor T112, and a thirteenth transistor T113. The eleventh transistor T111 selectively supplies the first clock signal C1 to the output line according to the voltage of the first node Q. The twelfth transistor T112 selectively supplies the third supplying voltage VSS to the output line according to the voltage of the second node QB1. The thirteenth transistor T113 selectively supplies the third supplying voltage VSS to the output line according to the voltage of the third node QB2.

[0092] The twelfth transistor T112 is operated in a dual mode with the fourth transistor T14 of the first controller 232 according to the voltage of the second node QB1. The thirteenth transistor T113 is operated in a dual mode with the third transistor T13 of the first controller 232 according to the voltage of the third node QB2.

[0093] FIG. 11 is a waveform view of operating respective stages shown in FIG. 10.

[0094] An operation of the stage will be described with reference to FIG. 10 and FIG. 11. In FIG. 11, the first to

fourth clock signals C1 to C4 as well as the gate start pulse GSP are provided in a positive type having a swing voltage above 10V, preferably, 25V. For convenience of explanation, it will be assumed that a potential of 17V is a high state, and a potential of -8V is a low state. Also, the third supplying voltage VSS supplied to the first stage ST1 is about -8V, the first supplying voltage VDD1 is in the high stage of about 17V, and the second supplying voltage VDD2 is in the low state of about -8V. In this state, the first and second supplying voltages VDD1 and VDD2 have the voltages of the opposite phases since a voltage generator 118 inverts the phases of the first and second supplying voltages VDD1 and VDD2 by each frame according to a clock mask signal Cm.

[0095] In the odd-numbered frame, the sixth and ninth transistors T16 and T19 are maintained in the turn-on state by the first supplying voltage VDD1 of the high state. Thus, the first supplying voltage VDD1 of the high state is supplied to the second node QB1, and the third supplying voltage VSS of the low state is supplied to the third node QB2. Accordingly, the fourth and twelfth transistors T14 and T112 are turned-on by the voltage of the second node QB1, whereby the third supplying voltage VSS is supplied to the first node Q.

[0096] During a period of 't1' of the odd-numbered frame, the gate start pulse GSP and the fourth clock signal C4 are in the high state, whereby the first transistor T11 is turned-on, and the first node Q is in a first high state H1. At this time, since the gate start pulse GSP, which is higher than the third supplying voltage VSS, is provided to the first node Q, the first node Q is in the first high state H1 by charging the gate start pulse GSP. Accordingly, as the first node Q is charged with the voltage of the first high state Hi, the seventh and tenth transistors T17 and T110 are turned-on. The third supplying voltage VSS is then supplied to the second node QB1 and the third node QB2, whereby the fourth and twelfth transistors T14 and T112 are turned-off, and the third and thirteenth transistors T13 and T113 are maintained in the turn-off state. In the period of 't1', the first clock signal C1 of the low state is supplied to the output line of the first stage ST1 through the eleventh transistor T111.

[0097] During a period of 't2' of the odd-numbered frame, the gate start pulse GSP and the fourth clock signal C4 are in the low state, and the first clock signal C1 is in the high state. Thus, the first transistor T11 is turned-off, and the eleventh transistor T111 is turned-on certainly. That is, since the first transistor T11 is turned-off, the first node Q is in a floating state. Thus, the first node Q is bootstrapping according to the high-state voltage of the first clock signal C1 due to a parasitic capacitance Cgs generated between gate and source of the eleventh transistor T111, whereby the first node Q is in a second high state H2, wherein the second high state H2 is higher than the first high state H1. As a result, the eleventh transistor T111 is turned-on. As the eleventh transistor T111 is turned-on, the first clock signal C1 of the high state is supplied to the output line of the first stage ST1. Accordingly, the first stage ST1 outputs the output signal S01 of the high state. The second stage ST2 then charges the first node Q by the output signal S01 of the high state outputted from the first stage ST1 during the period of 't2'.

[0098] During a period of 't3' of the odd-numbered frame, the first clock signal C1 is in the low state, and the second

clock signal C2 is in the high state. Thus, the second transistor T12 of the first stage ST1 is turned-on according to the output signal of the high state supplied through the output signal S02 input line of the second stage ST2. Accordingly, as the second transistor T12 is turned-on, the third supplying voltage VSS is supplied to the first node Q, and the eleventh transistor T111 is turned-off. The third supplying voltage VSS is supplied to the first node Q, whereby the seventh and tenth transistors T17 and T110 are turned-off. Thus, the first supplying voltage VDD1 of the high state is supplied to the second node QB1, and the third supplying voltage VSS is supplied to the third node QB2. Also, the fourth and twelfth transistors T14 and T112 are turned-on by the first supplying voltage VDD1 of the high state supplied to the second node QB1, whereby the first stage ST1 outputs the third supplying voltage as the output signal S01 through the twelfth transistor T12. In this case, the second stage ST2 outputs the second clock signal C2 of the high state as the output signal S02.

[0099] During a period of 't4' of the odd-numbered frame, the third clock signal C3 is in the high state, whereby the fourth, sixth, ninth and twelfth transistors T14, T16, T19 and T112 are maintained in the turn-on state. Thus, the first stage ST1 outputs the third supplying voltage VSS as the output signal S01.

[0100] The second stage ST2 is the same in structure as the first stage ST1. The second stage ST2 receives the output signal S01 outputted from the first stage ST1, an output signal S03 outputted from the third stage ST3, and the second clock signal C2. In the same mode as the first stage ST1, the second stage ST2 outputs the output signal S02 by operating the respective transistors T21, T22, T23, T24, T25, T26, T27, T28, T29, T210, T211, T212 and T213.

[0101] During the odd-numbered frame, each of the 'n' stages ST1 to STn outputs an output signal SO using one clock signal among the first to fourth clock signals C1 to C4, the output signal outputted from the following stage, the first supplying voltage VDD1 of the high state, and the second supplying voltage VDD2 of the low state. To maintain the low state in the output lines of the respective stages ST1 to STn during the odd-numbered frame, the positive bias stress is applied to the fourth and twelfth transistors (Ti4 and Ti12: 'i' is a positive number from 1 to 'n') operated in the dual mode by the first supplying voltage VDD1 of the high state. Meanwhile, a negative bias stress is applied to the third and thirteenth transistors (Ti3 and Ti13) by the second supplying voltage VSS2 of the low state.

[0102] After outputting the signal from each of 'n' stages ST1 to STn, the first to fourth clock signals C1 to C4 are in the low state by the clock mask signal Cm in some period of the blanking time which corresponds to the interval between the frames, whereby it is possible to prevent the bias stress from being applied to the respective transistors T. In the shift register and the LCD device according to the second embodiment of the present invention, it is possible to prevent the bias stress from being applied to the transistor by the continuous logic change of the clock signals C1 to C4, and to prevent the transistor from being deteriorated.

[0103] During some sections of the blanking time, the first supplying voltage VDD1 of the high state, supplied to the shift register 220, is inverted to the low state, and the second supplying voltage VDD2 of the low state is inverted to the high state.

[0104] In the even-numbered frame, the fifth and eighth transistors T15 and T18 are maintained in the turn-on state by the second supplying voltage VDD2 of the high state. Thus, the third supplying voltage VSS of the low state is supplied to the second node QB1, and the second supplying voltage VDD2 of the high state is supplied to the third node QB2. Accordingly, the third and thirteenth transistors T13 and T113 are turned-on by the voltage of the third node QB2, whereby the third supplying voltage VSS is supplied to the first node Q.

[0105] During a period of 't1' of an even-numbered frame, the gate start pulse GSP and the fourth clock signal C4 are in the high state, whereby the first transistor T11 is turned-on, and the first node Q is in a first high state H1. At this time, since the gate start pulse GSP, which is higher than the third supplying voltage VSS, is provided to the first node Q, the first node Q is in the first high state H1 by charging the gate start pulse GSP. Accordingly, as the first node Q is charged with the voltage of the first high state H1, the seventh and tenth transistors T17 and T110 are turned-on. The third supplying voltage VSS is supplied to the second node QB1 and the third node QB2, whereby the fourth and twelfth transistors T14 and T112 are turned-off, and the third and thirteenth transistors T13 and T113 are maintained in the turn-off state. In the period of 't1', the first clock signal C1 of the low state is supplied to the output line of the first stage ST1 through the eleventh transistor T111.

[0106] During a period of 't2' of the even-numbered frame, the gate start pulse GSP and the fourth clock signal C4 are in the low state, and the first clock signal C1 is in the high state. Thus, the first transistor T11 is turned-off, and the eleventh transistor T111 is turned-on. Since the first transistor T11 is turned-off, the first node Q is in a floating state. Thus, the first node Q is bootstrapping according to the high-state voltage of the first clock signal C1 due to a parasitic capacitance Cgs generated between gate and source of the eleventh transistor T111, whereby the first node Q is in a second high state H2, wherein the second high state H2 is higher than the first high state H1. As a result, the eleventh transistor T111 is turned-on. As the eleventh transistor T111 is turned-on, the first clock signal C1 of the high state is supplied to the output line of the first stage ST1. Accordingly, the first stage ST1 outputs the output signal S01 of the high state. The second stage ST2 charges the first node Q by the output signal S01 of the high state outputted from the first stage ST1 during the period of 't2'.

[0107] During a period of 't3' of the even-numbered frame, the first clock signal C1 is in the low state, and the second clock signal C2 is in the high state. Thus, the second transistor T12 of the first stage ST1 is turned-on according to the output signal of the high state supplied through the output signal S02 input line of the second stage ST2. Accordingly, as the second transistor T12 is turned-on, the third supplying voltage VSS is supplied to the first node Q, and the eleventh transistor T111 is turned-off. Also, the third supplying voltage VSS is supplied to the first node Q, whereby the seventh and tenth transistors T17 and T110 are turned-off. Thus, the third supplying voltage VSS of the high state is supplied to the second node QB1, and the second supplying voltage VDD2 of the high state is supplied to the third node QB2. Also, the third and thirteenth transistors T13 and T113 are turned-on by the second supplying voltage VDD2 of the high state supplied to the third node QB2,

whereby the first stage ST1 outputs the third supplying voltage VSS as the output signal S01 through the thirteenth transistor T13 which is turned-on. In this case, the second stage ST2 outputs the second clock signal C2 of the high state as the output signal S02.

[0108] During a period of 't4' of the even-numbered frame, the third clock signal C3 is in the high state, whereby the fourth, sixth, ninth and twelfth transistors T14, T16, T19 and T112 are maintained in the turn-on state. Thus, the first stage ST1 outputs the third supplying voltage VSS as the output signal S01.

[0109] The second stage ST2 is the same in structure as the first stage ST1. The second stage ST2 receives the output signal S01 outputted from the first stage ST1, an output signal S03 outputted from the third stage ST3, and the second clock signal C2. In the same mode as the first stage ST1, the second stage ST2 outputs the output signal S02 by operating the respective transistors T21, T22, T23, T24, T25, T26, T27, T28, T29, T210, T211, T212 and T213.

[0110] During the even-numbered frame, each of 'n' stages ST1 to STn outputs the output signal S0 using one clock signal among the first to fourth clock signals C1 to C4, the output signal outputted from the following stage, the first supplying voltage VDD1 of the low state, and the second supplying voltage VDD2 of the high state. To maintain the low state in the output lines of the respective stages ST1 to STn during the even-numbered frame, the negative bias stress is applied to the third and thirteenth transistors (Ti3 and Ti13: 'i' is a positive number from 1 to 'n') operated in the dual mode by the first supplying voltage VDD1 of the low state. Meanwhile, the positive bias stress is applied to the fourth and twelfth transistors (Ti4 and Ti12) by the second supplying voltage VSS2 of the high state.

[0111] In the shift register and the LCD device according to a second embodiment of the present invention, the first and second supplying voltages VDD1 and VDD2 are inverted in the blanking time, and the logic change of the clock signals C1 to C4 is prevented. Accordingly, the positive and negative bias stresses are alternately applied to the third and twelfth transistors Ti3 and Ti12 (or the fourth and thirteenth transistors Ti4 and Ti13) by each frame. Accordingly, it is possible to prevent the third and twelfth transistors Ti3 and Ti12 (or the fourth and thirteenth transistors Ti4 and Ti13) from being deteriorated due to the bias stress, and to prevent the stress generated by the logic change of the clock signals C1 to C4.

[0112] In the shift register and LCD device according to a second embodiment of the present invention, if the gate drivers 114 are positioned at both sides of the LCD panel 117, each of the stages may drive the odd-numbered gate lines or the even-numbered gate lines. Accordingly, the first stage ST1 receives the gate start pulse GSP and the output signal S03 outputted from the third stage ST3, and then the first stage ST1 operates according to the waveform of the first node Q shown in FIG. 6. Also, each of the second to 'n' stages ST2 to STn receives the output signal outputted from the preceding stage ST1 to ST(n/2+1), and the output signal outputted from the following stage ST5 to ST(n/2+2), and then each of the stages operates according to the waveform of the first node Q shown in FIG. 6.

[0113] In the shift register and LCD device according to the first and second embodiments of the present invention,

the first and second supplying voltages VDD1 and VDD2 may be inverted in the blanking time by each one of the first to 'i' frames.

[0114] As mentioned above, the shift register and the LCD device according to the preferred embodiments of the present invention have the following advantages.

[0115] In the shift register and the LCD device according to the preferred embodiment of the present invention, it is possible to prevent the logic change of the clock signals supplied to the shift register in the blanking time. Thus, it is possible to prevent the bias stress from being applied to the transistor, and to minimize the deterioration of transistor.

[0116] Also, the first and second supplying voltages, which are inverted by each frame, are inverted in the blanking time, whereby the positive and negative bias stresses are alternated to the transistor by each frame. Thus, it is possible to minimize the shift in the characteristics of transistor.

[0117] In the shift register and the LCD device according to the present invention, it is possible to prevent the deterioration of a transistor, thereby stably operating the shift register, and preventing a misoperation or a decrease in the lifespan of the gate driver.

[0118] It will be apparent to those skilled in the art that various modifications and variations can be made in the present invention without departing from the spirit or scope of the inventions. Thus, it is intended that the present invention covers the modifications and variations of this invention provided they come within the scope of the appended claims and their equivalents.

What is claimed is:

1. A shift register comprising:

a plurality of stages for sequential shift signals, wherein each of the plurality of stages is connected with first and second supplying voltage input lines having opposite phases inverted by at least every frame;

a start pulse input line; and

at least one clock signal input line in which a phase of a first logic state is shifted in sequence, and a clock signal inputted to the clock signal input line is maintained in a second logic state different from the first logic state during a blanking time between frames.

2. The shift register of claim 1, wherein phases of the first and second supplying voltages are inverted in a period of the blanking time.

3. The shift register of claim 1, wherein each of the plurality of stages includes:

a first controller for controlling a first node according to a start pulse and a first clock signal;

a second controller for controlling second and third nodes using first and second supplying voltages according to a start pulse and a second clock signal; and

an output buffer for selectively outputting a third clock signal and a third supplying voltage inputted from a third supplying voltage input line according to voltages of the first to third nodes.

4. The shift register of claim 3, wherein the first controller includes:

- a first transistor, connected with the start pulse input line in a diode type, for outputting the start pulse;
- a second transistor, connected with the first transistor and the first node, for supplying the start pulse to the first node according to the first clock signal;
- a third transistor, connected with the first node and the third supplying voltage input line, for supplying the third supplying voltage to the first node according to the voltage of the third node; and
- a fourth transistor, connected with the first node and the third supplying voltage input line, for supplying the third supplying voltage to the first node according to the voltage of the second node.

5. The shift register of claim 3, wherein the second controller includes:

- a fifth transistor, connected with the first supplying voltage input line and the second node, for supplying the first supplying voltage to the second node according to the second clock signal;
- a sixth transistor, connected with the second node and the third supplying voltage input line, for supplying the third supplying voltage to the second node according to the start pulse;
- a seventh transistor, connected with the second supplying voltage input line and the third node, for supplying the second supplying voltage to the third node according to the second clock signal; and
- an eighth transistor, connected with the third node and the third supplying voltage input line, for supplying the third supplying voltage to the third node according to the start pulse.

6. The shift register of claim 3, wherein the output buffer includes:

- a ninth transistor, connected with the third clock signal input line and the output line, for supplying the third clock signal to the output line according to the voltage of the first node;
- a tenth transistor, connected with the output line and the third supplying voltage input line, for supplying the third supplying voltage to the output line according to the voltage of the second node; and
- an eleventh transistor, connected with the output line and the third supplying voltage input line, for supplying the third supplying voltage to the output line according to the voltage of the third node.

7. The shift register of claim 1, wherein each of the plurality of stages includes:

- a first controller for controlling a first node according to a start pulse and an output signal outputted from the following stage;
- a second controller for controlling second and third nodes according to first and second supplying voltages, and controlling second and third nodes according to the voltage of the first node; and

an output buffer for selectively outputting one clock signal and a third supplying voltage inputted from a third supplying voltage input line to an output line according to voltages of the first to third nodes.

8. The shift register of claim 7, wherein the first controller includes:

- a first transistor, connected with the start pulse input line in a diode type, for supplying the start pulse to the first node;
- a second transistor, connected with the first node and the third supplying voltage input line, for supplying the third supplying voltage to the first node according to the output signal outputted from the following stage;
- a third transistor, connected with the first node and the third supplying voltage input line, for supplying the third supplying voltage to the first node according to the voltage of the third node; and
- a fourth transistor, connected with the first node and the third supplying voltage input line, for supplying the third supplying voltage to the first node according to the voltage of the second node.

9. The shift register of claim 7, wherein the second controller includes:

- a fifth transistor, connected with the second node and the third supplying voltage input line, for supplying the third supplying voltage to the second node according to the second supplying voltage;
- a sixth transistor, connected with the first supplying voltage input line in a diode type, for supplying the first supplying voltage to the second node;
- a seventh transistor, connected with the second node and the third supplying voltage input line, for supplying the third supplying voltage to the second node according to the voltage of the first node;
- an eighth transistor, connected with the second supplying voltage input line in a diode type, for supplying the second supplying voltage to the third node;
- a ninth transistor, connected with the third node and the third supplying voltage input line, for supplying the third supplying voltage to the third node according to the first supplying voltage; and
- a tenth transistor, connected with the third node and the third supplying voltage input line, for supplying the third supplying voltage to the third node according to the voltage of the first node.

10. The shift register of claim 7, wherein the output buffer includes:

- an eleventh transistor, connected with the first clock signal input line and the output line, for supplying the first clock signal to the output line according to the voltage of the first node;
- a twelfth transistor, connected with the output line and the third supplying voltage input line, for supplying the third supplying voltage to the output line according to the voltage of the second node; and
- a thirteenth transistor, connected with the output line and the third supplying voltage input line, for supplying the

third supplying voltage to the output line according to the voltage of the third node.

11. An LCD device comprising:

an LCD panel including liquid crystal cells in pixel regions defined by a plurality of gate lines and a plurality of data lines;

a data driver for supplying data to the data lines;

a gate driver including a plurality of stages, wherein each of the plurality of stages, connected with a start pulse input line and at least one clock signal input line for sequentially shifting phases of a first logic state, generates scan pulses for driving the plurality of gate lines; and

a timing controller for controlling the data driver and the gate driver, and generating a clock mask signal corresponding to a blanking time, wherein the blanking time is a period between frames;

wherein the clock signal is maintained in a second logic state different from the first logic state during the blanking time according to the clock mask signal.

12. The LCD device of claim 11, wherein the clock mask signal has the first logic state in some period of the blanking time, and also has the second logic state in the remaining period of the blanking time and one of the frames.

13. The LCD device of claim 11, further comprising a voltage generator, which generates first and second supplying voltages having opposite phases inverted by at least every one of the frames, and a third supplying voltage different from the first and second supplying voltages, wherein the voltage generator supplies the generated supplying voltages to the gate driver.

14. The LCD device of claim 13, wherein the phases of the first and second supplying voltages are inverted in at least one section of the blanking time.

15. The LCD device of claim 13, wherein each of the stages includes:

a first controller for controlling a first node according to a start pulse and a first clock signal;

a second controller for controlling second and third nodes using the first and second supplying voltages according to the start pulse and a second clock signal; and

an output buffer for selectively outputting a third clock signal and the third supplying voltage according to the voltages of the first to third nodes.

16. The LCD device of claim 15, wherein the first controller includes:

a first transistor, connected with the start pulse input line in a diode type, for outputting the start pulse;

a second transistor, connected with the first transistor and the first node, for supplying the start pulse to the first node according to the first clock signal;

a third transistor, connected with the first node and the third supplying voltage input line, for supplying the third supplying voltage to the first node according to the voltage of the third node; and

a fourth transistor, connected with the first node and the third supplying voltage input line, for supplying the

third supplying voltage to the first node according to the voltage of the second node.

17. The LCD device of claim 15, wherein the second controller includes:

a fifth transistor, connected with the first supplying voltage input line and the second node, for supplying the first supplying voltage to the second node according to the second clock signal;

a sixth transistor, connected with the second node and the third supplying voltage input line, for supplying the third supplying voltage to the second node according to the start pulse;

a seventh transistor, connected with the second supplying voltage input line and the third node, for supplying the second supplying voltage to the third node according to the second clock signal; and

an eighth transistor, connected with the third node and the third supplying voltage input line, for supplying the third supplying voltage to the third node according to the start pulse.

18. The LCD device of claim 15, wherein the output buffer includes:

a ninth transistor, connected with the third clock signal input line and the output line, for supplying the third clock signal to the output line according to the voltage of the first node;

a tenth transistor, connected with the output line and the third supplying voltage input line, for supplying the third supplying voltage to the output line according to the voltage of the second node; and

an eleventh transistor, connected with the output line and the third supplying voltage input line, for supplying the third supplying voltage to the output line according to the voltage of the third node.

19. The LCD device of claim 13, wherein each of the stages includes:

a first controller for controlling a first node according to a start pulse and an output signal outputted from the following stage;

a second controller for controlling second and third nodes using the first and second supplying voltages, and controlling second and third nodes according to the voltage of the first node; and

an output buffer for selectively outputting one clock signal among four clock signals and a third supplying voltage inputted from a third supplying voltage input line to an output line according to voltages of the first to third nodes.

20. The LCD device of claim 19, wherein the first controller includes:

a first transistor, connected with the start pulse input line in a diode type, for supplying the start pulse to the first node;

a second transistor, connected with the first node and the third supplying voltage input line, for supplying the third supplying voltage to the first node according to the output signal outputted from the following stage;

- a third transistor, connected with the first node and the third supplying voltage input line, for supplying the third supplying voltage to the first node according to the voltage of the third node; and
- a fourth transistor, connected with the first node and the third supplying voltage input line, for supplying the third supplying voltage to the first node according to the voltage of the second node.
- 21.** The LCD device of claim 19, wherein the second controller includes:
- a fifth transistor, connected with the second node and the third supplying voltage input line, for supplying the third supplying voltage to the second node according to the second supplying voltage;
- a sixth transistor, connected with the first supplying voltage input line in a diode type, for supplying the first supplying voltage to the second node;
- a seventh transistor, connected with the second node and the third supplying voltage input line, for supplying the third supplying voltage to the second node according to the voltage of the first node;
- an eighth transistor, connected with the second supplying voltage input line in a diode type, for supplying the second supplying voltage to the third node;
- a ninth transistor, connected with the third node and the third supplying voltage input line, for supplying the third supplying voltage to the third node according to the first supplying voltage; and
- a tenth transistor, connected with the third node and the third supplying voltage input line, for supplying the third supplying voltage to the third node according to the voltage of the first node.
- 22.** The LCD device of claim 19, wherein the output buffer includes:
- an eleventh transistor, connected with the first clock signal input line and the output line, for supplying the first clock signal to the output line according to the voltage of the first node;
- a twelfth transistor, connected with the output line and the third supplying voltage input line, for supplying the third supplying voltage to the output line according to the voltage of the second node; and
- a thirteenth transistor, connected with the output line and the third supplying voltage input line, for supplying the third supplying voltage to the output line according to the voltage of the third node.
- 23.** A method for operating an LCD display comprising an LCD panel including liquid crystal cells in pixel regions defined by data lines and gate lines, the method comprising:
- supplying data to the data lines from a data driver;
- generating scan pulses for driving the gate lines from a gate driver, the gate driver including a plurality of stages, wherein each of the plurality of stages is connected with a start pulse input line and at least one clock signal input line for sequentially shifting phases of a first logic state;
- controlling the data driver and the gate driver with a timing controller;
- generating a clock mask signal corresponding to a blanking time; and
- maintaining the clock signal in a second logic state during the blanking time according to the clock mask signal, wherein the second logic state is different from the first logic state.
- 24.** The method of claim 23, wherein the clock mask signal sets the first logic state in some period of the blanking time, and also sets the second logic state in the remaining period of the blanking time and one of the frames.
- 25.** The method of claim 23, further comprising:
- generating with a voltage generator, a first and second supplying voltages having opposite phases inverted by at least every one of the frames, and a third supplying voltage different from the first and second supplying voltages, wherein the voltage generator supplies the generated supplying voltages to the gate driver.
- 26.** The method of claim 25, wherein the phases of the first and second supplying voltages are inverted in at least one section of the blanking time.
- 27.** The method of claim 25, further comprising:
- controlling a first node with a first controller according to a start pulse and a first clock signal;
- controlling second and third nodes with a second controller using the first and second supplying voltages according to the start pulse and a second clock signal; and
- outputting a third clock signal and the third supplying voltage from an output buffer according to the voltages of the first to third nodes.
- 28.** The method of claim 27, wherein the first controller includes:
- a first transistor, connected with the start pulse input line in a diode type, for outputting the start pulse;
- a second transistor, connected with the first transistor and the first node, for supplying the start pulse to the first node according to the first clock signal;
- a third transistor, connected with the first node and the third supplying voltage input line, for supplying the third supplying voltage to the first node according to the voltage of the third node; and
- a fourth transistor, connected with the first node and the third supplying voltage input line, for supplying the third supplying voltage to the first node according to the voltage of the second node.
- 29.** The method of claim 27, wherein the second controller includes:
- a fifth transistor, connected with the first supplying voltage input line and the second node, for supplying the first supplying voltage to the second node according to the second clock signal;
- a sixth transistor, connected with the second node and the third supplying voltage input line, for supplying the third supplying voltage to the second node according to the start pulse;
- a seventh transistor, connected with the second supplying voltage input line and the third node, for supplying the

second supplying voltage to the third node according to the second clock signal; and

an eighth transistor, connected with the third node and the third supplying voltage input line, for supplying the third supplying voltage to the third node according to the start pulse.

30. The method of claim 27, wherein the output buffer includes:

a ninth transistor, connected with the third clock signal input line and the output line, for supplying the third clock signal to the output line according to the voltage of the first node;

a tenth transistor, connected with the output line and the third supplying voltage input line, for supplying the third supplying voltage to the output line according to the voltage of the second node; and

an eleventh transistor, connected with the output line and the third supplying voltage input line, for supplying the third supplying voltage to the output line according to the voltage of the third node.

31. The method of claim 25, wherein each of the stages includes:

controlling a first node with a first controller according to a start pulse and an output signal outputted from the following stage;

controlling second and third nodes with a second controller using to first and second supplying voltages, and controlling second and third nodes according to the voltage of the first node; and

outputting one clock signal among four clock signals and a third supplying voltage inputted from a third supplying voltage from an output buffer according to voltages of the first to third nodes.

32. The method of claim 31, wherein the first controller includes:

a first transistor, connected with the start pulse input line in a diode type, for supplying the start pulse to the first node;

a second transistor, connected with the first node and the third supplying voltage input line, for supplying the third supplying voltage to the first node according to the output signal outputted from the following stage;

a third transistor, connected with the first node and the third supplying voltage input line, for supplying the third supplying voltage to the first node according to the voltage of the third node; and

a fourth transistor, connected with the first node and the third supplying voltage input line, for supplying the third supplying voltage to the first node according to the voltage of the second node.

33. The method of claim 31, wherein the second controller includes:

a fifth transistor, connected with the second node and the third supplying voltage input line, for supplying the third supplying voltage to the second node according to the second supplying voltage;

a sixth transistor, connected with the first supplying voltage input line in a diode type, for supplying the first supplying voltage to the second node;

a seventh transistor, connected with the second node and the third supplying voltage input line, for supplying the third supplying voltage to the second node according to the voltage of the first node;

an eighth transistor, connected with the second supplying voltage input line in a diode type, for supplying the second supplying voltage to the third node;

a ninth transistor, connected with the third node and the third supplying voltage input line, for supplying the third supplying voltage to the third node according to the first supplying voltage; and

a tenth transistor, connected with the third node and the third supplying voltage input line, for supplying the third supplying voltage to the third node according to the voltage of the first node.

34. The method of claim 31, wherein the output buffer includes:

an eleventh transistor, connected with the first clock signal input line and the output line, for supplying the first clock signal to the output line according to the voltage of the first node;

a twelfth transistor, connected with the output line and the third supplying voltage input line, for supplying the third supplying voltage to the output line according to the voltage of the second node; and

a thirteenth transistor, connected with the output line and the third supplying voltage input line, for supplying the third supplying voltage to the output line according to the voltage of the third node.

* * * * *

专利名称(译)	移位寄存器和使用它的液晶显示器件		
公开(公告)号	US20060139293A1	公开(公告)日	2006-06-29
申请号	US11/296109	申请日	2005-12-06
[标]申请(专利权)人(译)	乐金显示有限公司		
申请(专利权)人(译)	LG飞利浦LCD有限公司		
当前申请(专利权)人(译)	LG DISPLAY CO. , LTD.		
[标]发明人	CHO NAM WOOK		
发明人	CHO, NAM WOOK		
IPC分类号	G09G3/36		
CPC分类号	G09G3/3677 G09G3/3688 G11C19/00 G11C19/28		
优先权	1020040114912 2004-12-29 KR		
其他公开文献	US7872628		
外部链接	Espacenet USPTO		

摘要(译)

公开了一种移位寄存器和LCD装置，以通过控制偏置应力来防止晶体管的劣化。移位寄存器包括用于顺序移位信号的多个级，其中多个级中的每个级与具有相反相位的第一和第二供电电压输入线连接，所述第一和第二供电电压输入线至少每帧反相，起始脉冲输入线和至少一个时钟信号输入线，其中第一逻辑状态的相位依次移位，并且输入到时钟信号输入线的时钟信号在帧之间的消隐时间期间保持在与第一逻辑状态不同的第二逻辑状态。

