



(19) **United States**

(12) **Patent Application Publication**
Lee et al.

(10) **Pub. No.: US 2010/0156771 A1**

(43) **Pub. Date: Jun. 24, 2010**

(54) **LIQUID CRYSTAL DISPLAY**

Publication Classification

(76) Inventors: **Bong-Jun Lee**, Seoul (KR);
Jong-Hwan Lee, Anyang-si (KR)

(51) **Int. Cl.**
G09G 3/36 (2006.01)

(52) **U.S. Cl.** **345/87**

Correspondence Address:
F. CHAU & ASSOCIATES, LLC
130 WOODBURY ROAD
WOODBURY, NY 11797 (US)

(57) **ABSTRACT**

A liquid crystal display is provided. The liquid crystal display includes a pixel array having a plurality of pixels in a matrix on a substrate. First and second pixels are adjacent to each other along a first direction. The first and second pixels each include first and second switching elements. A first common gate line extends in a second direction different from the first direction and is commonly connected to the first and second switching elements. First and second data lines extend in the first direction and are connected to the first and second switching elements, respectively.

(21) Appl. No.: **12/625,298**

(22) Filed: **Nov. 24, 2009**

(30) **Foreign Application Priority Data**

Dec. 18, 2008 (KR) 10-2008-0129430

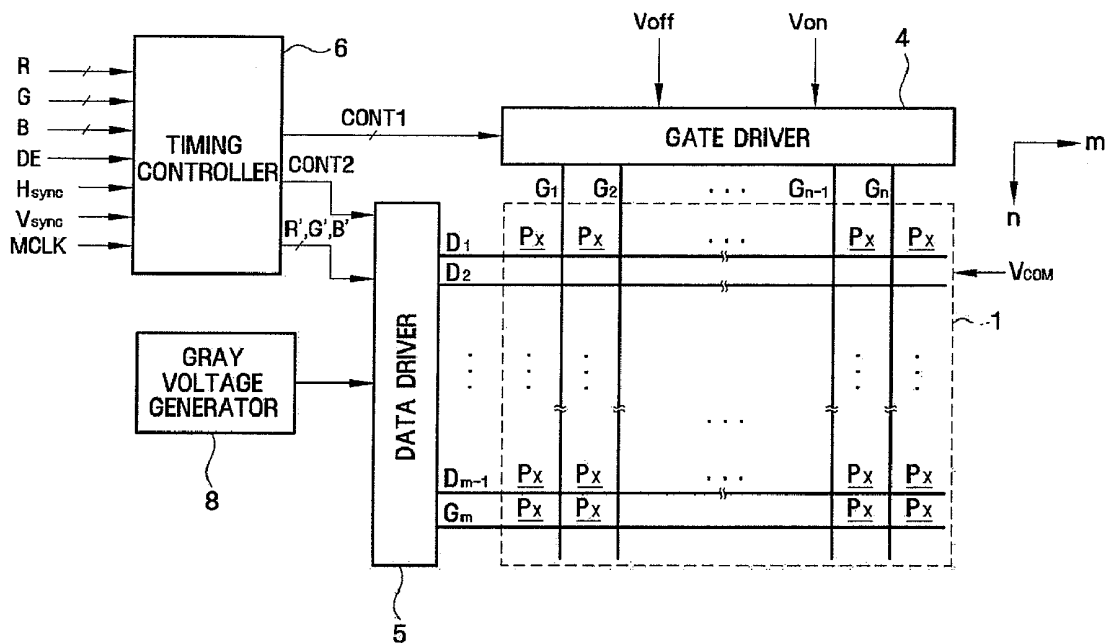


FIG. 1

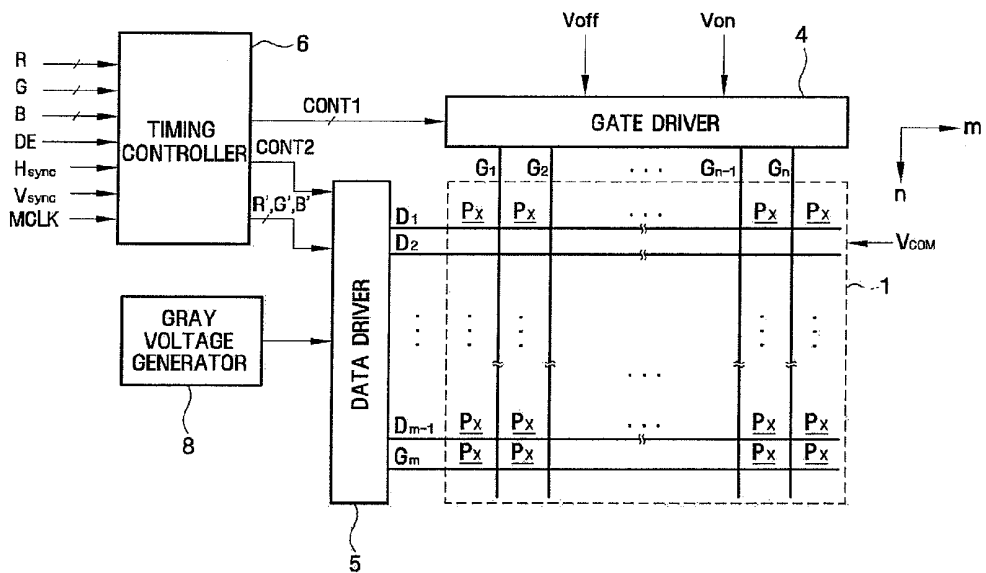


FIG. 2

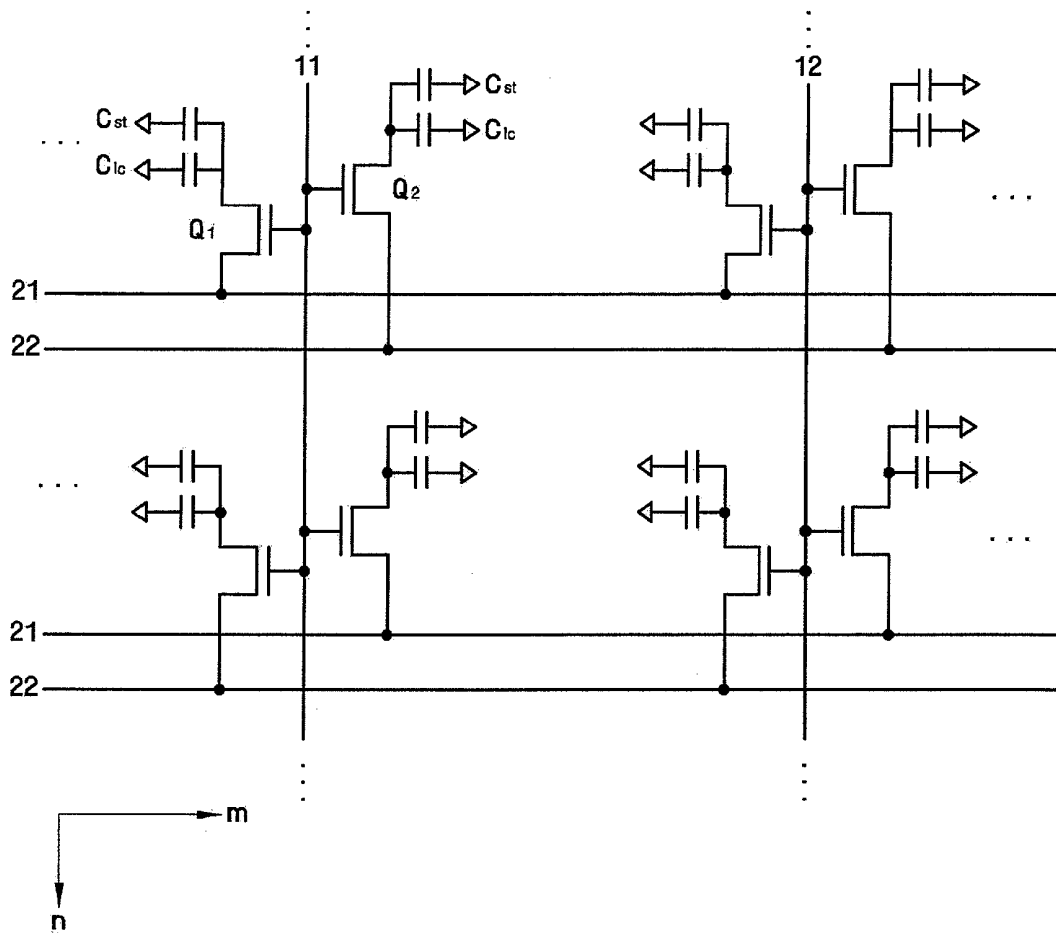


FIG. 3

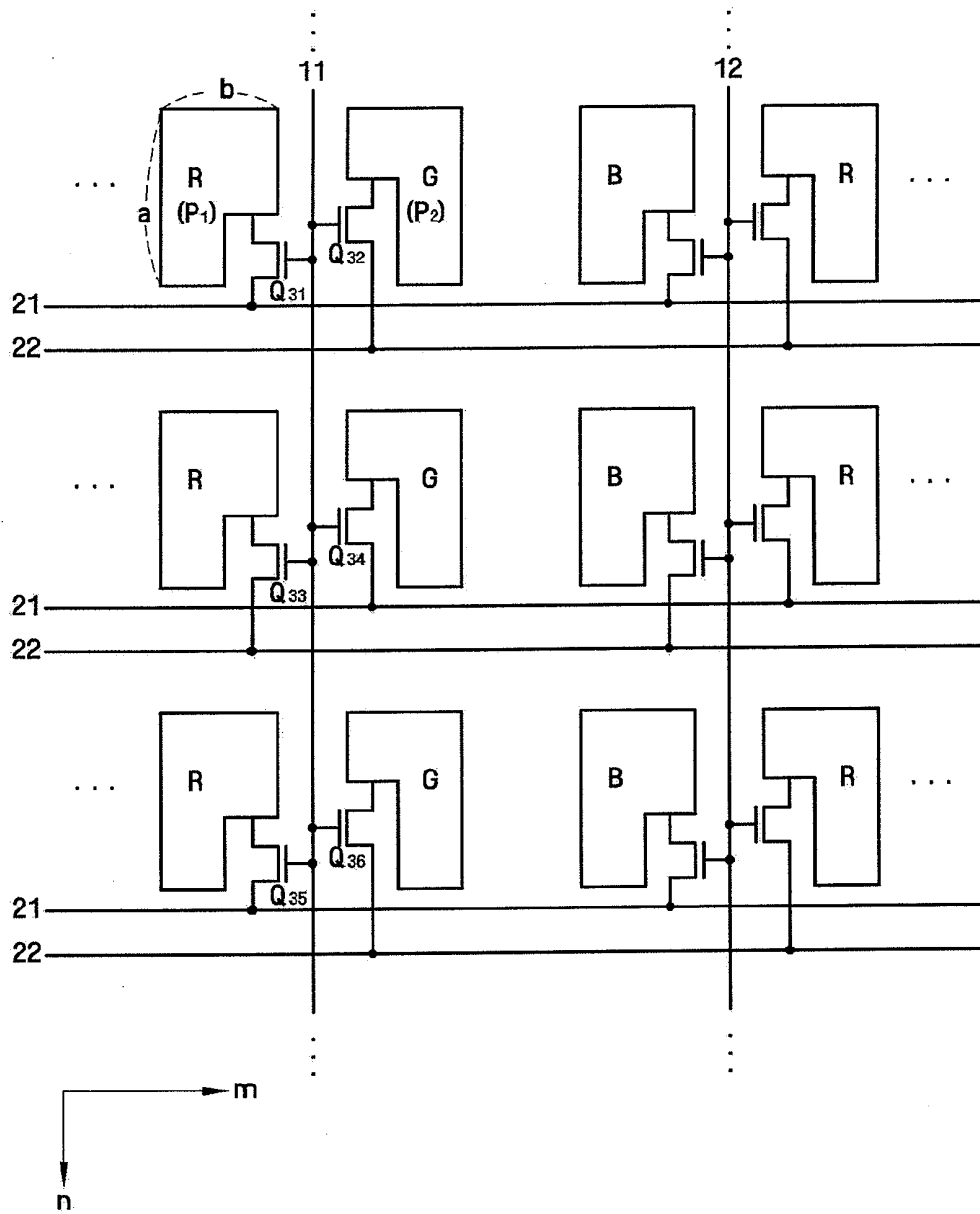


FIG. 4A

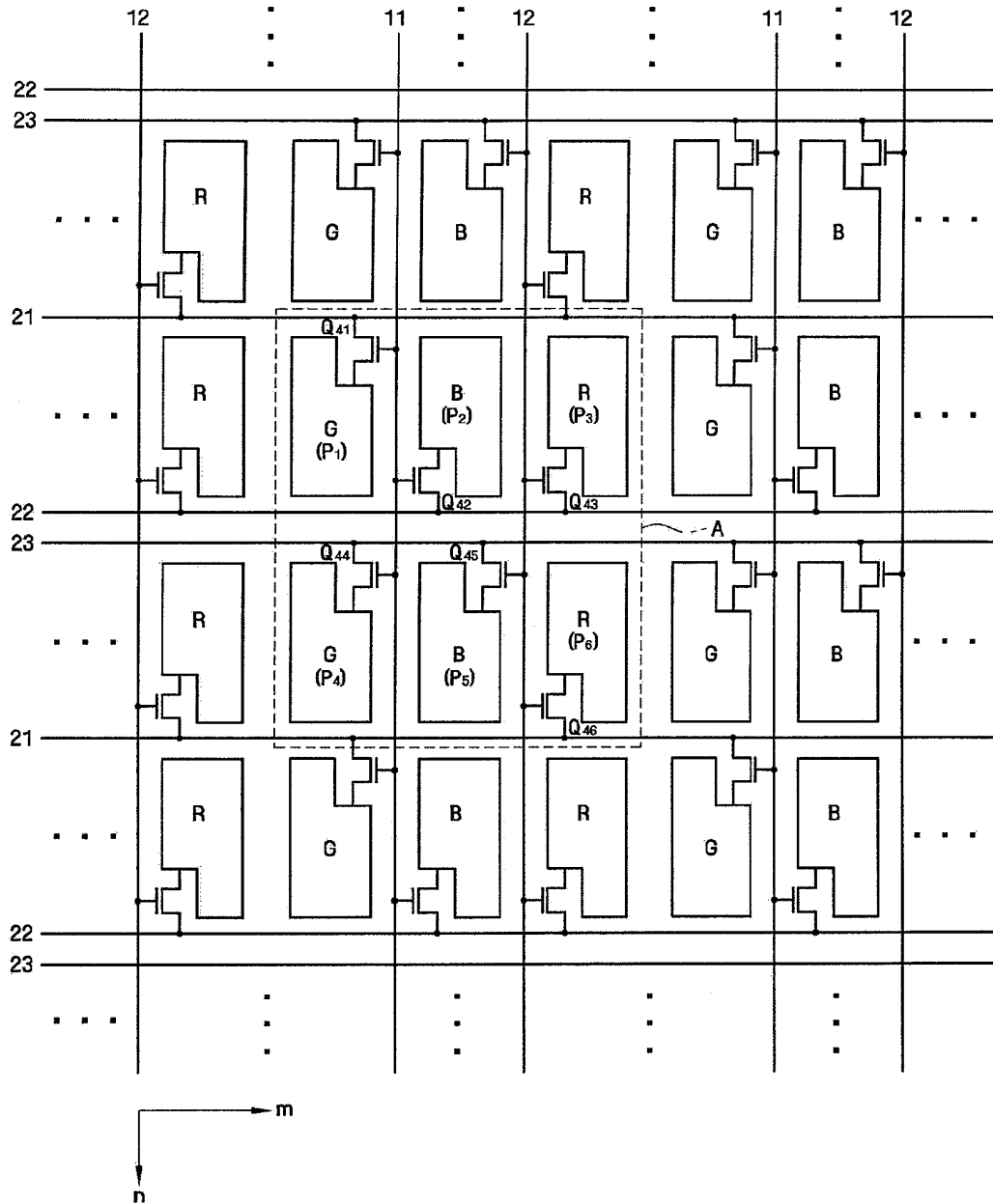


FIG. 4B

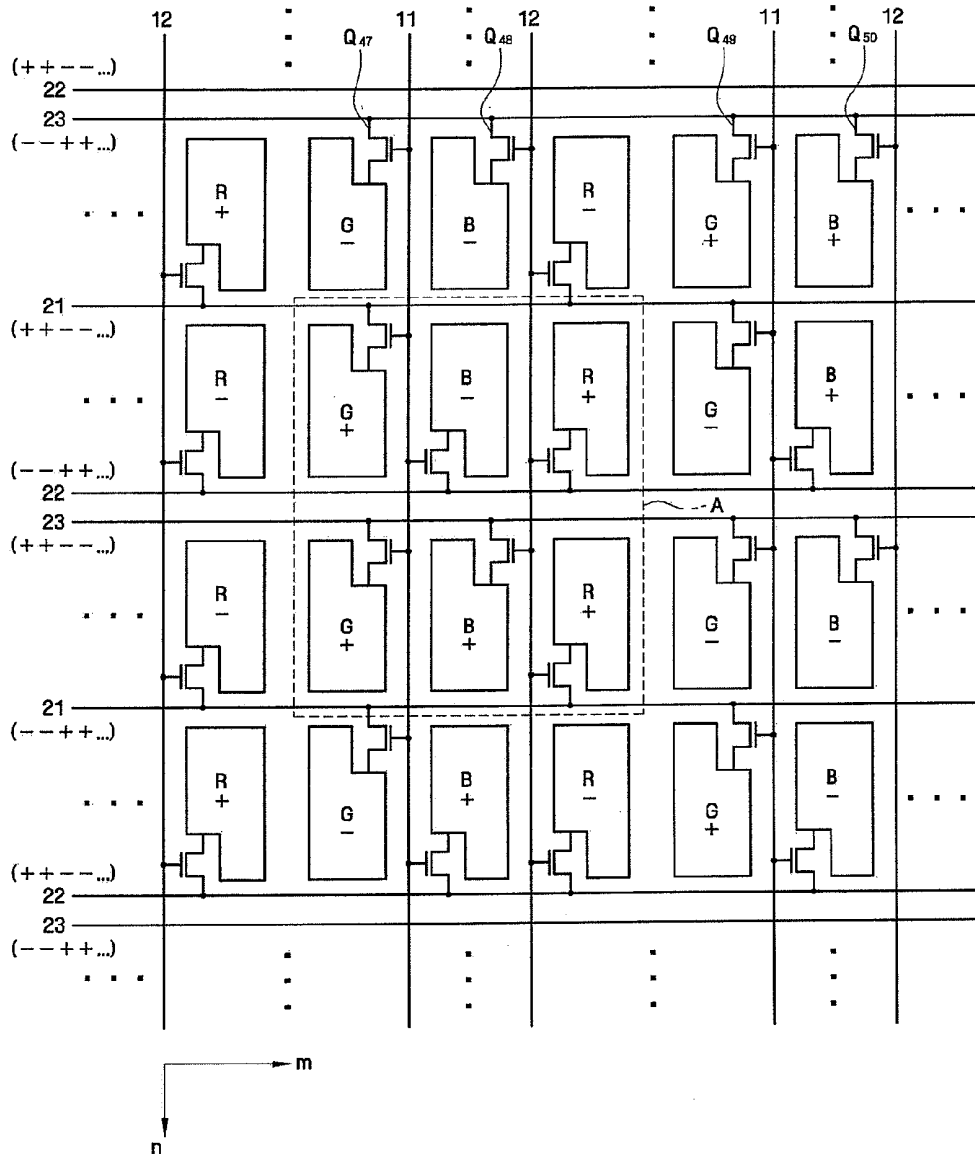


FIG. 4C

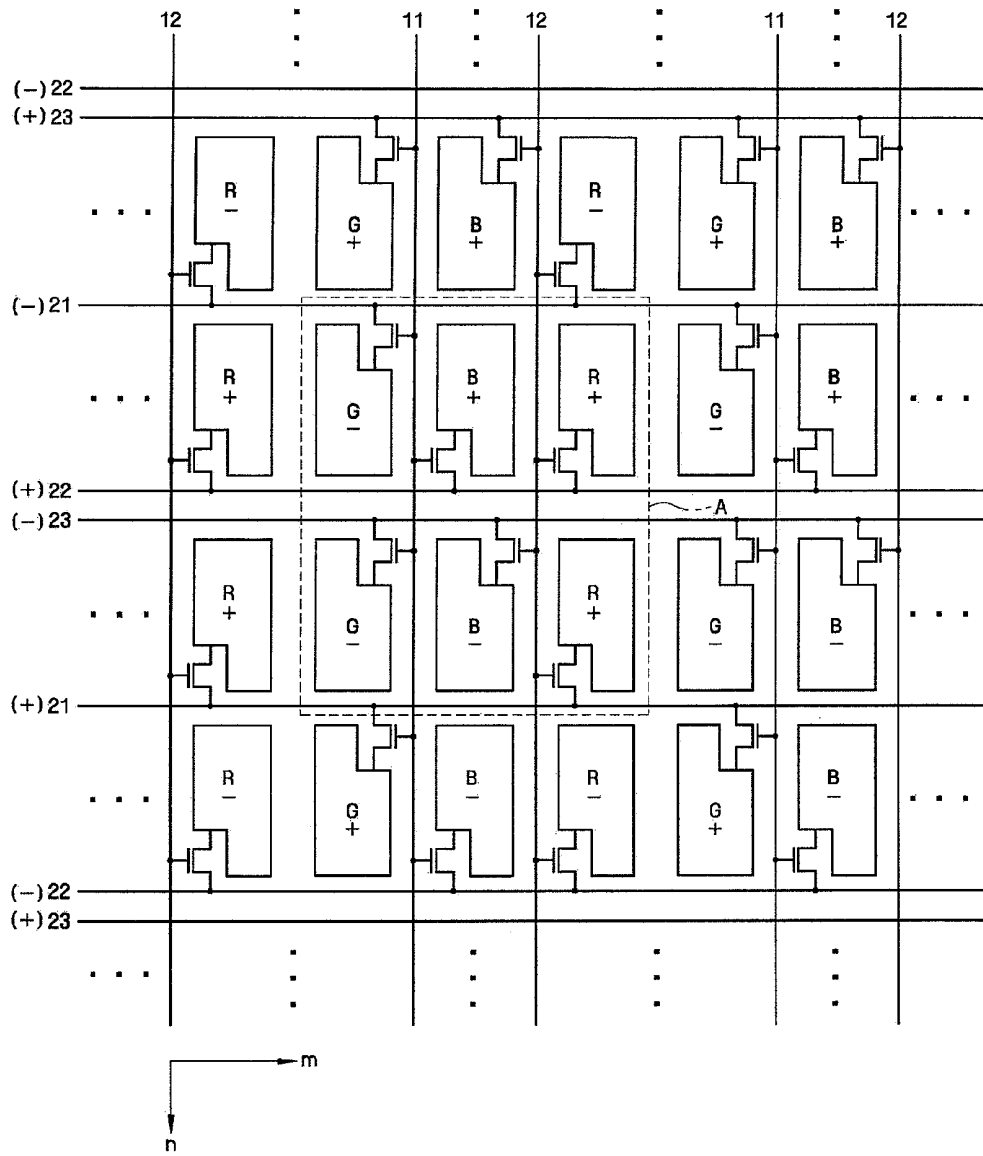


FIG. 5A

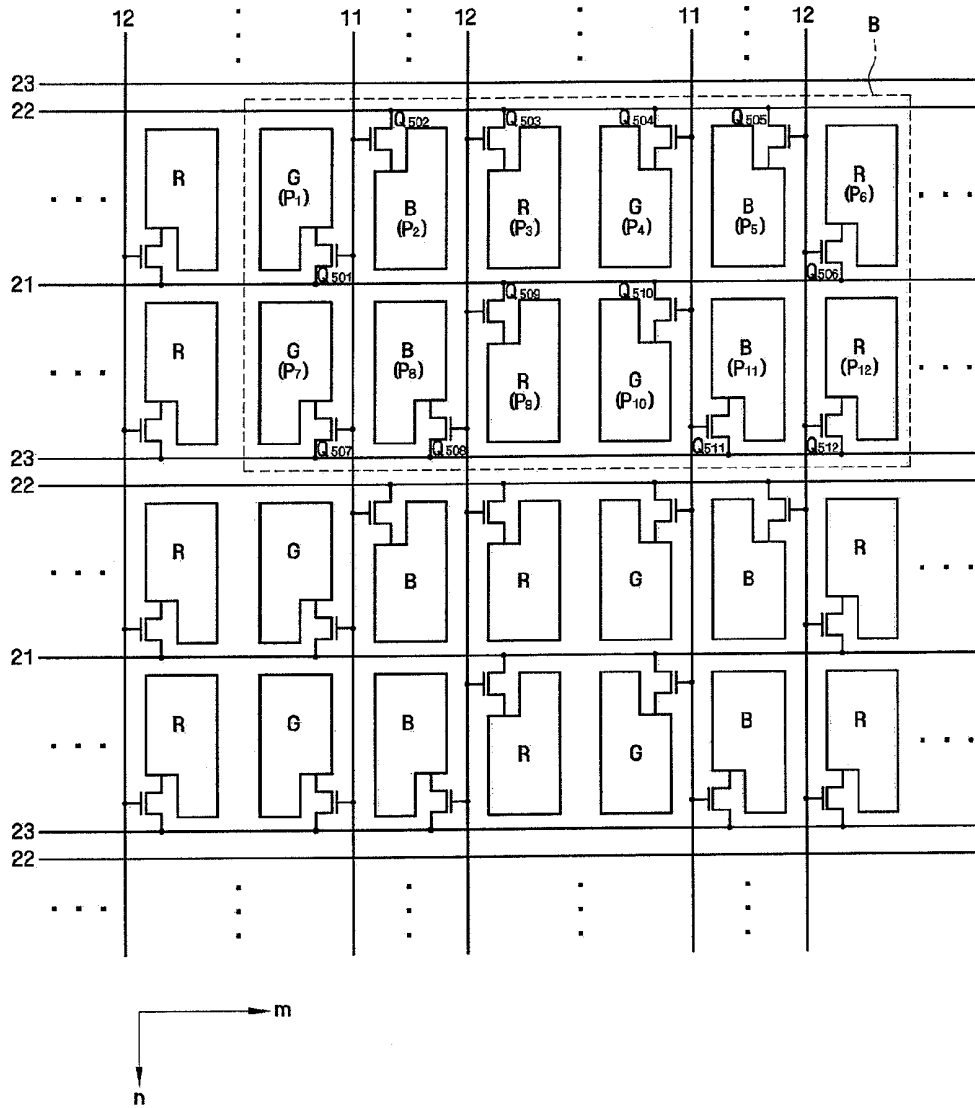


FIG. 5B

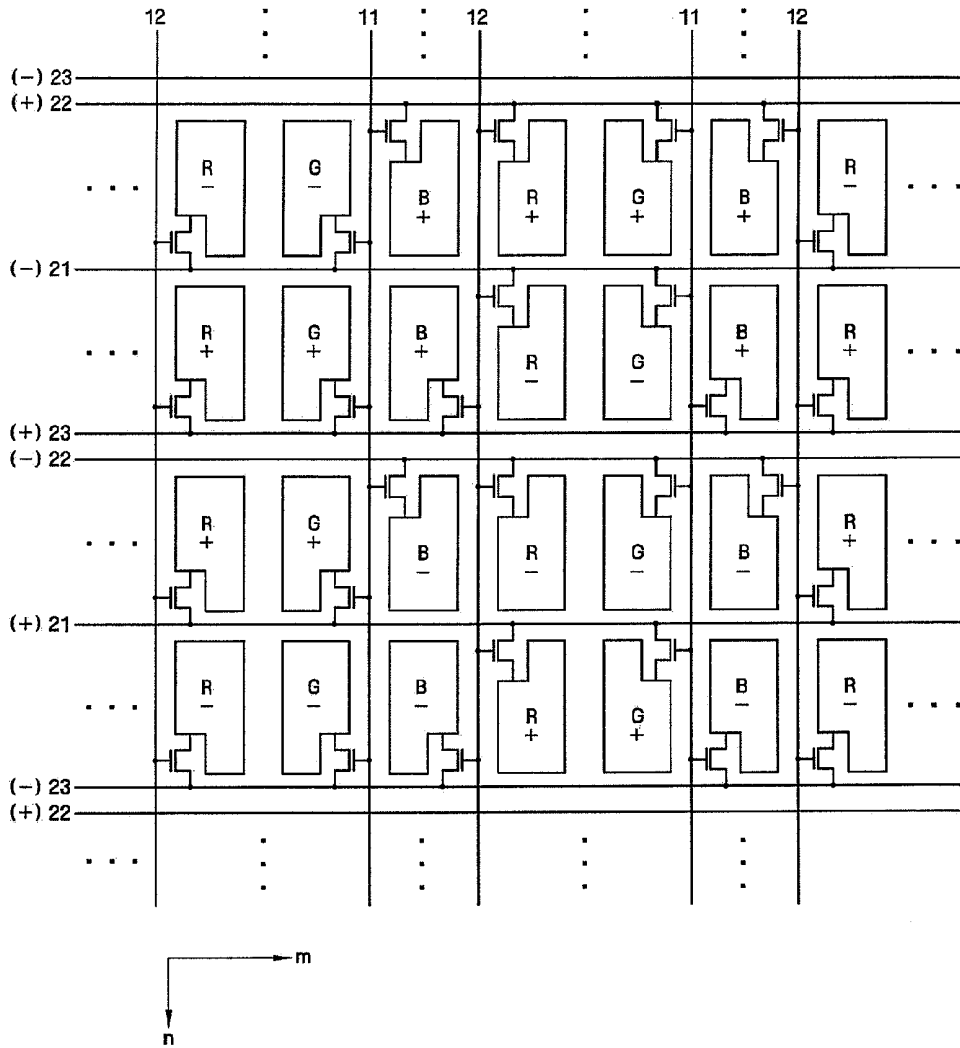


FIG. 6A

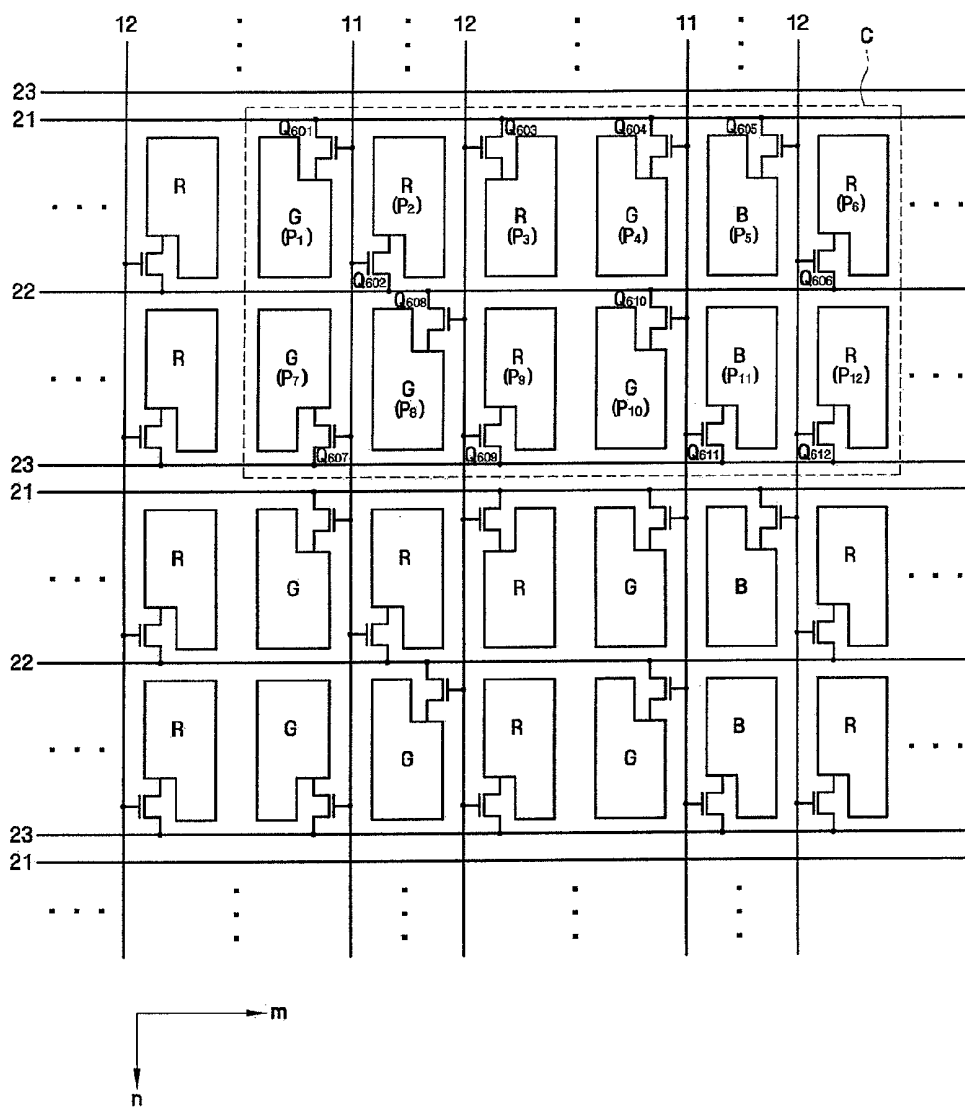
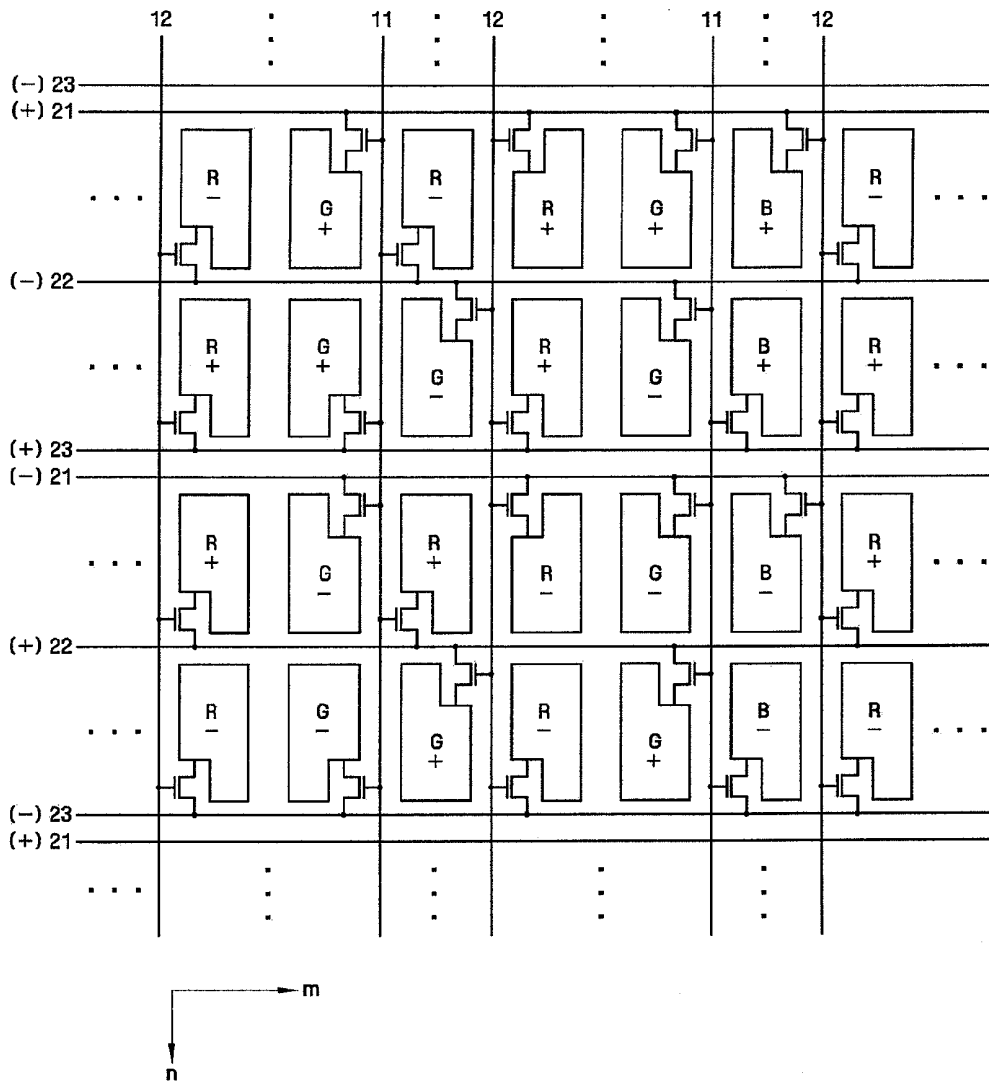


FIG. 6B



LIQUID CRYSTAL DISPLAY

CROSS-REFERENCE TO RELATED APPLICATION

[0001] This application claims priority to and the benefit of Korean Patent Application No. 10-2008-0129430 filed on Dec. 18, 2008 in the Korean Intellectual Property Office, the entire content of which is incorporated by reference herein.

BACKGROUND OF THE INVENTION

[0002] 1. Field of the Invention

[0003] The present disclosure relates to a liquid crystal display, and more particularly, to liquid crystal display pixel arrays.

[0004] 2. Discussion of the Related Art

[0005] A liquid crystal display (LCD) is a widely used flat panel display (FPD). It is composed of two display panels on which are formed field generating electrodes, such as pixel electrodes and a common electrode. A liquid crystal layer is interposed between the two display panels. A voltage is applied to the field generating electrodes to generate an electric field in the liquid crystal layer. The orientation of liquid crystal molecules of the liquid crystal layer is determined and the polarization of incident light is controlled through the generated electric field to display an image.

[0006] In the LCD, a thin film transistor (TFT) array includes gate lines for transmitting scanning signals and data lines for transmitting data lines crossing each other to define pixels. Each pixel of the array includes a TFT connected to a gate line and a data line, and a pixel electrode connected to the TFT. A pixel array is formed on the TFT array using a plurality of pixels, each including the TFT.

[0007] Since a data driver of an LCD is typically a high-priced, highly functional device as compared to a gate driver, it becomes difficult to mount the data driver directly on a glass substrate using amorphous silicon TFTs. In addition, as the number of channels used increases, the manufacturing cost sharply increases. Therefore, in order to reduce the manufacturing cost, it becomes helpful to reduce the number of data driver circuits and/or the number of channels. It also becomes helpful for the LCDs to have pixel arrays which provide sufficient charging time for the gate driver circuits.

SUMMARY OF THE INVENTION

[0008] An exemplary embodiment of the present invention provides an LCD which reduces the number of data driver circuits and/or the number of channels and provides appropriate charging time for gate driver circuits.

[0009] An exemplary embodiment of an LCD includes a pixel array having a plurality of pixels in a matrix on a substrate. The matrix has at least a first pixel row and a second pixel row adjacent the first pixel row. Both the first pixel row and the second pixel row extend in a first direction. A first pixel and a second pixel of the first pixel row are adjacent to each other along the first direction. The first pixel and the second pixel respectively include a first switching element and a second switching element. A first common gate line extends in a second direction different from the first direction and is commonly connected to the first switching element and to the second switching element. A first data line and a second data line extend in the first direction and are connected to the first switching element and to the second switching element, respectively.

[0010] The substrate may have a long side and a short side, the long side being substantially parallel to the first direction, and the short side being substantially parallel to the second direction.

[0011] A length of the first pixel in the second direction may be greater than a length of the first pixel in the first direction.

[0012] The pixel array may alternately display colors of red, green and blue in the first direction and display the same color in the second direction.

[0013] A pair of a first data line and a second data line may be in each row of the pixel array.

[0014] Each of the pixels may include a switching element, respectively, and switching elements of a column of pixels in the pixel array may be alternately connected to a first data line of a row and to a second data line in an adjacent row.

[0015] A third data line may be further provided on the substrate. The first data line, the second data line and the third data line may be on the substrate at repeated intervals. The second data line and the third data line may be opposed to and substantially parallel to each other. The first pixel row may be between the first data line and the second data line. The second pixel row may be between the third data line and the first data line.

[0016] A second common gate line may be further provided on the substrate. The first common gate line and second common gate line may be on the substrate at repeated intervals. The second common gate line may be adjacent to and substantially parallel to the first common gate line. The second pixel may be between the first common gate line and the second common gate line.

[0017] The pixel array may include six pixels in a 2×3 matrix, the six pixels including the first pixel, the second pixel, a third pixel, a fourth pixel, a fifth pixel and a sixth pixel. The first pixel, the second pixel, and the third pixel having a third switching element, may be in the first pixel row. The fourth pixel, the fifth pixel and the sixth pixel, respectively including a fourth switching element, a fifth switching element and a sixth switching element, may be in the second pixel row. The third switching element may be connected to the second common gate line and to the second data line. The fourth switching element may be connected to the first common gate line and to the third data line. The fifth switching element may be connected to the second common gate line and to the third data line. The sixth switching element may be connected to the second common gate line and to the first data line.

[0018] To the first data line, a first signal may be consecutively applied twice followed by a second signal consecutively applied twice, at repeated intervals. To the second data line, the second signal may be consecutively applied twice followed by the first signal consecutively applied twice, at repeated intervals. To the third data line, the first signal may be consecutively applied twice followed by the second signal consecutively applied twice, at repeated intervals.

[0019] The first signal and the second signal may be alternately applied to adjacent data lines.

[0020] A third data line may be further provided on the substrate. The first data line, the second data line and the third data line may be on the substrate at repeated intervals. The third data line and the second data line may be opposed to and substantially parallel to each other. The first pixel row may be

between the second data line and the first data line. The second pixel row may be between the first data line and the third data line.

[0021] A second common gate line may be further provided on the substrate. The first common gate line and the second common gate line may be on the substrate at repeated intervals. The second common gate line may be adjacent to and substantially parallel to the first common gate line. The second pixel may be between the first common gate line and the second common gate lines.

[0022] The pixel array may include 12 pixels in a 2×6 matrix. The first pixel row may include the first pixel, the second pixel, a third pixel, a fourth pixel, a fifth pixel and a sixth pixel, respectively including the first switching element, the second switching element, a third switching element, a fourth switching element, and a sixth switching element, along the first direction. The second pixel row may include a seventh pixel, an eighth pixel, a ninth pixel, a tenth pixel, an eleventh pixel and a twelfth pixel, respectively including a seventh switching element, an eighth switching element, a ninth switching element, a tenth switching element, an eleventh switching element and a twelfth switching element, along the first direction. The third switching element may be connected to the second common gate line and to the second data line. The fourth switching element may be connected to a second first common gate line and to the second data line. The fifth switching element may be connected to a second common gate line and to the second data line. The sixth switching element may be connected to the second common gate line and to the first data line. The seventh switching element may be connected to the first common gate line and to the third data line. The eighth switching element may be connected to the second common gate line and to the third data line. The ninth switching element may be connected to the second common gate line and to the first data line. The tenth switching element may be connected to a second first common gate line and to the first data line. The eleventh switching element may be connected to the second first common gate line and to the third data line. The twelfth switching element may be connected to the second common gate line and to the third data line.

[0023] The first signal and the second signal may be alternately applied to adjacent data lines.

[0024] A third data line may be further provided on the substrate. The first data line, the second data line and the third data line may be on the substrate at repeated intervals. The third data line and the first data line may be opposed to and substantially parallel to each other. The first pixel row may be between the first data line and the second data line. The second pixel row may be between the second data line and the third data line.

[0025] A second common gate line may be further provided on the substrate. The first common gate line and the second common gate line may be on the substrate at repeated intervals. The second common gate line may be adjacent to and substantially parallel to the first common gate line. The second pixel may be between the first common gate line and the second common gate line.

[0026] The pixel array may include 12 pixels in a 2×6 matrix. The first pixel row may include the first pixel, the second pixel, a third pixel, a fourth pixel, a fifth pixel and a sixth pixel, respectively including the first switching element, the second switching element, a third switching element, a fourth switching element, a fifth switching element and a

sixth switching element, along the first direction. The second pixel row may include a seventh pixel, an eighth pixel, a ninth pixel, a tenth pixel, an eleventh pixel and a twelfth pixel, respectively including a seventh switching element, an eighth switching element, a ninth switching element, a tenth switching element, an eleventh switching element and a twelfth switching element, along the first direction. The third switching element may be connected to the second common gate line and to the first data line. The fourth switching element may be connected to a second first common gate line and to the first data line. The fifth switching element may be connected to a second second common gate line and to the first data line. The sixth switching element may be connected to the second common gate line and to the second data line. The seventh switching element may be connected to the first common gate line and to the third data line. The eighth switching element may be connected to the second common gate line and to the second data line. The ninth switching element may be connected to the second common gate line and to the third data line. The tenth switching element may be connected to the second first common gate line and to the second data line. The eleventh switching element may be connected to the second first common gate line and to the third data line. The twelfth switching element may be connected to the second common gate line and to the third data line. The first signal and the second signal may be alternately applied to adjacent data lines.

BRIEF DESCRIPTION OF THE DRAWINGS

[0027] The above and other features of the present invention will become more apparent by describing in detail exemplary embodiments thereof with reference to the attached drawings in which:

[0028] FIG. 1 is a block diagram of an LCD according to an exemplary embodiment of the present invention;

[0029] FIG. 2 is an equivalent circuit diagram of a TFT display panel of the LCD shown in FIG. 1;

[0030] FIG. 3 illustrates a pixel array of the LCD shown in FIG. 2;

[0031] FIG. 4A illustrates a pixel array of the LCD according to an exemplary embodiment of the present invention;

[0032] FIG. 4B illustrates signals applied to data lines of the pixel array shown in FIG. 4A being subjected to 2×1 inversion;

[0033] FIG. 4C illustrates signals applied to data lines of the pixel array shown in FIG. 4A being subjected to column inversion;

[0034] FIG. 5A illustrates a pixel array of an LCD according to an exemplary embodiment of the present invention;

[0035] FIG. 5B illustrates signals applied to data lines of the pixel array shown in FIG. 5A being subjected to column inversion;

[0036] FIG. 6A illustrates a pixel array of an LCD according to an exemplary embodiment of the present invention; and

[0037] FIG. 6B illustrates signals applied to data lines of the pixel array shown in FIG. 6A being subjected to column inversion.

DETAILED DESCRIPTION OF EXEMPLARY EMBODIMENTS

[0038] It will be understood that when an element or layer is referred to as being “on” another element or layer, it can be directly on to the other element or layer or intervening ele-

ments or layers may be present. Like reference numerals refer to like elements throughout the specification.

[0039] Hereinafter, LCDs according to exemplary embodiments of the present invention will be described with reference to the accompanying drawings.

[0040] Referring now to FIG. 1, the LCD includes a TFT display panel 1, a gate driver 4 connected to the TFT display panel 1, a data driver 5, a gray voltage generator 8 connected to the data driver 5, and a timing controller 6 for controlling the drivers.

[0041] The TFT display panel 1 includes a plurality of display signal lines $G_1, G_2, \dots, G_{n-1}, G_n, D_1, D_2, \dots, D_{m-1}, D_m$ and a plurality of pixels P_X connected thereto and substantially in a matrix. Gate lines $G_1, G_2, \dots, G_{n-1}, G_n$ transmit gate signals while data lines $D_1, D_2, \dots, D_{m-1}, D_m$ transmit data signals.

[0042] The gate lines $G_1, G_2, \dots, G_{n-1}, G_n$ extend in a column direction and are substantially parallel to each other, while the data lines $D_1, D_2, \dots, D_{m-1}, D_m$ extend in a row direction and are substantially parallel to each other. The TFT panel 1 of the LCD according to embodiments of the present invention will be described below in more detail.

[0043] The gray voltage generator 8 generates two sets of a plurality of gray voltages related to the transmittance of the pixels P_X . The gray voltages in one set have a positive polarity with respect to a common voltage V_{COM} , while those in the other set have a negative polarity with respect to the common voltage V_{COM} .

[0044] The gate driver 4 is connected to the gate lines $G_1, G_2, \dots, G_{n-1}, G_n$ of the TFT panel 1 and synthesizes the gate-on voltage V_{on} and the gate off voltage V_{off} from an external device to generate gate signals for application to the gate lines $G_1, G_2, \dots, G_{n-1}, G_n$.

[0045] The data driver 5 is connected to the data lines $D_1, D_2, \dots, D_{m-1}, D_m$ of the TFT panel 1 and applies data voltages, selected from the gray voltages supplied from the gray voltage generator 8, to the data lines $D_1, D_2, \dots, D_{m-1}, D_m$. The data driver 5 may include a plurality of ICs.

[0046] The timing controller 6 generates control signals for controlling the operations of the gate driver 4 and the data driver 5 and supplies the gate driver 4 and the data driver 5 with the corresponding control signals.

[0047] Now, the operation of the LCD will be described in more detail.

[0048] The timing controller 6 is supplied with red, green and blue image signals R, G, B and input control signals controlling the display thereof such as a vertical synchronization signal V_{sync} , a horizontal synchronization signal H_{sync} , a main clock MCLK, and a data enable signal DE, from an external graphics controller (not shown). After generating gate control signals CONT1 and data control signals CONT2 and processing and modifying the three color input image signals R, G, B into four color image signals R', G', B' suitable for the operation of the TFT panel 1 on the basis of the input control signals and the image signals R, G, B, the timing controller 6 provides the gate control signals CONT1 for the gate driver 4, and the processed and modified image signals R', G', B' and the data control signals CONT2 for the data driver 5.

[0049] The gate control signals CONT1 include a scanning start signal STV for instructing to start scanning, at least a clock signal for controlling the output of the gate-on voltage V_{on} , a gate clock signal CPV for controlling the output timing

of the gate-on voltage V_{on} , and an output enable signal OE for defining a pulse width of the gate-on voltage V_{on} .

[0050] The data control signals CONT2 include a horizontal synchronization start signal STH for informing of start of a horizontal period, a load signal LOAD for instructing to apply the data voltages to the data lines $D_1, D_2, \dots, D_{m-1}, D_m$, an inversion control signal RVS for reversing the polarity of the data voltages (with respect to the common voltage V_{COM}), and a data clock signal HCLK.

[0051] The data driver 5 receives a packet of the image data R', G', B' for a row of pixels P_X from the timing controller 6 and converts the image data R', G', B' into analog data voltages selected from the gray voltages supplied from the gray voltage generator 8 in response to the data control signals CONT2 from the timing controller 6.

[0052] Responsive to the vertical synchronization start signal STV and the gate clock signal CPV supplied from the timing controller 6, the gate driver 4 applies the gate-on voltage V_{on} having a period of $\frac{1}{2} H$ to the gate lines $G_1, G_2, \dots, G_{n-1}, G_n$ to turn on the switching elements Q_1, Q_2 (see FIG. 2) connected to the gate lines $G_1, G_2, \dots, G_{n-1}, G_n$. Here, the gate-on voltage V_{on} may be sequentially applied to the gate lines $G_1, G_2, \dots, G_{n-1}, G_n$ in a row direction.

[0053] While the gate-on voltage V_{on} is applied to the gate lines $G_1, G_2, \dots, G_{n-1}, G_n$ and the switching elements Q_1, Q_2 connected to the gate lines $G_1, G_2, \dots, G_{n-1}, G_n$ are turned on, the data driver 5 applies the data voltages to the data lines $D_1, D_2, \dots, D_{m-1}, D_m$.

[0054] The data voltages applied to the data lines $D_1, D_2, \dots, D_{m-1}, D_m$ are applied to the corresponding pixels P_X through the turned-on switching elements Q_1, Q_2 .

[0055] A variation in electric fields generated by pixel electrodes (not shown) in cooperation with a common electrode (not shown) reorients liquid crystal molecules, and the variation in the polarized light causes a change in the transmittance of light by a polarizer (not shown) attached to a display panel (not shown).

[0056] In this manner, during a period of one frame, the gate-on voltage V_{on} is sequentially applied to all the gate lines $G_1, G_2, \dots, G_{n-1}, G_n$ to apply data voltages to all the pixels. When the next frame starts after finishing one frame, the inversion control signal RVS applied to the data driver 5 is controlled such that the polarity of the data voltages is reversed (which is called "frame inversion"). The inversion control signal RVS may be also controlled such that the polarity of the data voltages flowing in a data line in one frame are reversed (which is called "line inversion"), or the polarity of the data voltages in one pixel row are reversed (which is called "dot inversion").

[0057] The gate driver 4 in accordance with an exemplary embodiment of the present invention may be formed of IC chips at one side or upper and lower sides of the TFT display panel 1, thereby preventing the TFT display panel 1 from becoming bulky.

[0058] FIG. 2 is an equivalent circuit diagram of a TFT display panel 1 of an LCD according to an embodiment of the present invention, and FIG. 3 illustrates a pixel array of the LCD shown in FIG. 2. The LCD according to an embodiment of the present invention will now be described with reference to FIGS. 1 through 3.

[0059] A pixel array having a plurality of pixels in a matrix is formed on a substrate.

[0060] In the pixel array, first and second pixels P_1, P_2 of FIG. 3, which are adjacent to each other in a first direction m ,

include first and second switching elements Q_1, Q_2 of FIG. 2, respectively. A liquid crystal capacitor C_{lc} and a storage capacitor C_{st} are connected to each of the switching elements Q_1, Q_2 . If unnecessary, the storage capacitor C_{st} may be omitted.

[0061] The switching elements Q_1, Q_2 have three terminals. A gate terminal is connected to a first common gate line **11**. A source terminal is connected to first or second data lines **21, 22**. A drain terminal is connected to the liquid crystal capacitor C_{lc} and the storage capacitor C_{st} . Here, the first and second data lines **21, 22** extend in the first direction m .

[0062] The switching elements Q_1, Q_2 are commonly connected to the first common gate line **11** extending in a second direction n that is different from the first direction m .

[0063] In more detail, the switching elements Q_1, Q_2 are connected to the gate lines **11, 12** and the data lines **21, 22** as follows.

[0064] The switching elements Q_1, Q_2 are positioned at left and right sides of the first common gate line **11** in the first direction m . The switching element Q_1 positioned at the left side of the first common gate line **11** has its source electrode connected to the first data line **21**, and the switching element Q_2 positioned at the right side of the first common gate line **11** has its source electrode connected to the second data line **22**, forming a row of pixels. Alternatively, the connection relationship of the switching elements Q_1, Q_2 with respect to the gate lines **11, 12** and the data lines **21, 22** may be reversed. That is to say, the switching element Q_1 positioned at the left side of the first common gate line **11** may have its source electrode connected to the second data line **22**, and the switching element Q_2 positioned at the right side of the first common gate line **11** may have its source electrode connected to the first data line **21**, forming a row of pixels.

[0065] Referring to FIG. 3, the first and second data lines **21, 22** may be a pair on each row of the pixel array. Each of the pixels sharing common gate line **11** includes one of the switching elements $Q_{31}, Q_{32}, Q_{33}, Q_{34}, Q_{35}, Q_{36}$. Here, the switching elements Q_{31}, Q_{33}, Q_{35} or the switching elements Q_{32}, Q_{34}, Q_{36} of a column of pixels in the pixel array may be alternately connected to the first data line **21** and the second data line **22** for each row of the pixel array. In the left pixel column as viewed relative to the first common gate line **11**, the switching element Q_{31} of the first row is connected to the first data line **21**. The switching element Q_{33} of the second row is connected to the second data line **22**. The switching element Q_{35} of the third row is connected to the first data line **21**. Conversely, in the right pixel column as viewed relative to the first common gate line **11**, the switching element Q_{32} of the first row is connected to the second data line **22**. The switching element Q_{34} of the second row is connected to the first data line **21**. The switching element Q_{36} of the third row is connected to the second data line **22**. Alternatively, as mentioned above, the connection relationship of the switching elements in the pixel array may be reversed.

[0066] The liquid crystal capacitor C_{lc} includes a pixel electrode provided on the TFT display panel **1** and a common electrode provided on a color filter display panel as two terminals. A liquid crystal layer between the two electrodes functions as a dielectric of the liquid crystal capacitor C_{lc} . The pixel electrode is connected to the switching elements Q_1, Q_2 , and the common electrode is formed on the entire surface of the TFT display panel **1** and receives the common voltage V_{COM} .

[0067] The storage capacitor C_{st} includes the pixel electrode and a separate signal line (not shown), which is provided on the TFT display panel **1**, overlaps the pixel electrode via an insulator, and is supplied with a predetermined voltage such as the common voltage V_{COM} . Alternatively, the storage capacitor C_{st} includes the pixel electrode and an adjacent gate line called a previous gate line, which overlaps the pixel electrode via an insulator.

[0068] The substrate for the TFT display panel **1** of FIG. 1 having the pixel array may have long sides and short sides. As seen in FIG. 1, the long sides are substantially parallel to the first direction m , and the short sides are substantially parallel to the second direction n . Accordingly, the data driver **5** may be at the short sides of the substrate.

[0069] In the pixel array formed by the first and second pixels P_1, P_2 , a length a of each of the first and second pixels P_1, P_2 in the second direction n is greater than a length b thereof in the first direction m .

[0070] The pixel array may alternately represent colors of red (R), green (G) and blue (B) in the first direction m (i.e., in a row direction) and represent the same color in the second direction n (i.e., in a column direction).

[0071] FIG. 4A illustrates a pixel array of an LCD according to an exemplary embodiment of the present invention. FIG. 4B illustrates that signals applied to data lines of the pixel array shown in FIG. 4A are subjected to 2×1 inversion. FIG. 4C illustrates that signals applied to data lines of the pixel array shown in FIG. 4A are subjected to column inversion. The LCD according to the exemplary embodiment of the present invention will now be described with reference to FIGS. 4A through 4C.

[0072] Referring to FIG. 4A, a pixel array having a plurality of pixels in a matrix is formed on a substrate. In the pixel array, first and second pixels P_1, P_2 , adjacent to each other along a first direction m , include first and second switching elements Q_{41}, Q_{42} , respectively. In addition, the first common gate line **11** extends in a second direction n different from the first direction m , and is commonly connected to the first and second switching elements Q_{41}, Q_{42} . The first and second data lines **21, 22** extend in the first direction m , and are connected to the first and second switching elements Q_{41}, Q_{42} , respectively.

[0073] The LCD according to the exemplary embodiment of the present invention further includes a third data line **23** on the substrate. The first through third data lines **21, 22, 23** are on the substrate at repeated intervals. Here, one single data line, i.e., the first data line **21**, and a pair of data lines, i.e., the second and third data lines **22, 23**, alternate at repeated intervals.

[0074] In particular, the first to third data lines **21, 22, 23** are such that six pixels included in the pixel array are in a 2×3 matrix portion A in FIG. 4A. That is to say, the first and second data lines **21, 22** are such that the first pixel row is between the first data line **21** and the second data line **22**, and the second and third data lines **22, 23** are opposed to and substantially parallel to each other. In addition, the third and first data lines **23, 21** are such that the second pixel row is between the third data line **23** and the first data line **21**. In the portion A, pixels P_1, P_2, P_3 belong to the first pixel row and pixels P_4, P_5, P_6 belong to the second pixel row.

[0075] The LCD according to the exemplary embodiment of the present invention further includes a second common gate line **12**. The first and second common gate lines **11, 12** are on the substrate at repeated intervals. Here, the second

common gate line **12** is adjacent to and substantially parallel to the first common gate line **11**, and the second pixel P_2 is positioned between the first and second common gate lines **11**, **12**.

[0076] By the arrangement of the first through third data lines **21**, **22**, **23** and the first and second common gate lines **11**, **12**, six pixels P_1 , P_2 , P_3 , P_4 , P_5 , P_6 in the portion A in FIG. 4A are in a 2×3 matrix. The connection relationships among the first through third data lines **21**, **22**, **23**, the first and second common gate lines **11**, **12**, and the switching elements Q_{41} , Q_{42} , Q_{43} , Q_{44} , Q_{45} , Q_{46} respectively included in the six pixels P_1 , P_2 , P_3 , P_4 , P_5 , P_6 is described below in more detail. In the first pixel row, the first and second pixels P_1 , P_2 , and the third pixel P_3 which includes the third switching element Q_{43} , are along the first direction m . In the second pixel row, the fourth to sixth pixels P_4 , P_5 , P_6 , respectively including the fourth to sixth switching elements Q_{44} , Q_{45} , Q_{46} , are along the first direction m .

[0077] Here, the third switching element Q_{43} is connected to the second common gate line **12** and the second data line **22**. The fourth switching element Q_{44} is connected to the first common gate line **11** and the third data line **23**. The fifth switching element Q_{45} is connected to the second common gate line **12** and the third data line **23**. The sixth switching element Q_{46} is connected to the second common gate line **12** and the first data line **21**.

[0078] Accordingly, the pixel array of the LCD according to the exemplary embodiment of the present invention has an overall 2×3 matrix occurring at repeated intervals.

[0079] Referring to FIG. 4B, a first signal is consecutively applied twice to the first through third data lines **21**, **22**, **23**, respectively, and then a second signal is consecutively applied twice thereto. Here, the first and second signals are inversion control signals RVS that inverse the polarity of a data voltage. That is to say, the first signal may be a positive (+) data voltage, and the second signal may be a negative (-) data voltage, or vice versa.

[0080] For example, assuming that the first signal is a negative (-) data voltage, and the second signal is a positive (+) data voltage, the first signal, i.e., a negative (-) data voltage, is consecutively applied twice to the third data line **23** positioned at the upper portion of FIG. 4B. Then, the second signal, i.e., a positive (+) data voltage, is consecutively applied twice to the third data line **23**. That is, the twice applied first signal, i.e., the negative (-) data voltage, is applied, for example, to the two switching elements Q_{47} , Q_{48} connected to the third data line **23**. Accordingly, the pixels having the two switching elements Q_{47} , Q_{48} have negative (-) polarities. Then, the twice applied second signal, i.e., the positive (+) data voltage is applied to the two switching elements Q_{49} , Q_{50} which are also connected to the third data line **23**. Accordingly, pixels including the two switching elements Q_{49} , Q_{50} have positive (+) polarities.

[0081] A first signal and a second signal having opposite polarities of those applied to the third data line **23** are applied to the first data line **21** adjacent to the upper third data line **23**. That is to say, the first signal, i.e., the positive (+) data voltage, is consecutively applied to the first data line **21** twice. Next, the second signal, i.e., the negative (-) data voltage, is consecutively applied to the first data line **21** twice.

[0082] Similarly, the first signal and the second signal having opposite polarities of those applied to the first data line **21** are applied to the second data line **22** adjacent to the first data line **21**.

[0083] Polar staining which may appear on a particular pixel array can be prevented by performing 2×1 inversion on the data signals and the pixel array having the 2×3 matrix occurring at repeated intervals. In addition, one single data line, i.e., the first data line **21**, and a pair of data lines, i.e., the second and third data lines **22**, **23**, are alternately in a row, thereby preventing horizontal stripes from being visible on the LCD.

[0084] Referring to FIG. 4C, the first and second signals are alternately applied to the respective first through third data lines **21**, **22**, **23**. That is to say, when the first signal is applied to the first data line **21**, the second signal is applied to the second data line **22** and the first signal is again applied to the data line **23**. Accordingly, the signals applied to the respective first through third data lines **21**, **22**, **23** are subjected to column inversion. Here, the first signal and the second signal are substantially the same as described above.

[0085] For example, when the first signal, i.e., a positive (+) data voltage, is applied to the third data line **23** positioned at an upper portion of FIG. 4C, the second signal, i.e., a negative (-) data voltage, is applied to the first data line **21** adjacent to the third data line **23**. In addition, the first signal, i.e., the positive (+) data voltage, is again applied to the second data line **22** adjacent to the first data line **21**, and vice versa.

[0086] FIG. 5A illustrates a pixel array of an LCD according to an exemplary embodiment of the present invention, and FIG. 5B illustrates that signals applied to data lines of the pixel array shown in FIG. 5A are subjected to column inversion.

[0087] The LCD according to the exemplary embodiment of the present invention will now be described with reference to FIGS. 5A and 5B.

[0088] Referring to FIG. 5A, a pixel array having a plurality of pixels in a matrix is foamed on a substrate. In the pixel array, first and second pixels P_1 , P_2 , adjacent to each other along a first direction m , include first and second switching elements Q_{501} , Q_{502} , respectively. In addition, the first common gate line **11** extends in a second direction n different from the first direction m , and is commonly connected to the first and second switching elements Q_{501} , Q_{502} . The first and second data lines **21**, **22** extend in the first direction m , and are connected to the first and second switching elements Q_{501} , Q_{502} , respectively.

[0089] The LCD according to the exemplary embodiment of the present invention further includes a third data line **23** on the substrate. The first through third data lines **21**, **22**, **23** are on the substrate at repeated intervals. Here, one single data line, i.e., the first data line **21**, and a pair of data lines, i.e., the second and third data lines **22**, **23**, alternate at repeated intervals.

[0090] In particular, the first through third data lines **21**, **22**, **23** are such that 12 pixels in a portion B in FIG. 5B belonging to the pixel array are in a 2×6 matrix at repeated intervals.

[0091] That is to say, the second data line and the first data line **22**, **21** are in the first pixel row positioned between the second data line **22** and the first data line **21**. The first data line **21** and the third data line **23** are in the second pixel row positioned between the first data line **21** and the third data line **23**. The third data line **23** and the second data line **22** are opposed to each other. Here, pixels P_1 , P_2 , P_3 , P_4 , P_5 , P_6 belong to the first pixel row of the portion B in FIG. 5A. Pixels P_7 , P_8 , P_9 , P_{10} , P_{11} , P_{12} belong to the second pixel row of the portion B.

[0092] The LCD according to the exemplary embodiment of the present invention further includes a second common gate line **12**. The first and second common gate lines **11**, **12** are substantially the same as those according to the exemplary embodiment of FIG. **4A**, and a repeated explanation thereof will not be given.

[0093] By the arrangement of the first through third data lines **21**, **22**, **23** and the first and second common gate lines **11**, **12**, 12 pixels $P_1, P_2, P_3, P_4, P_5, P_6, P_7, P_8, P_9, P_{10}, P_{11}, P_{12}$, in the portion B in FIG. **5A** are in a 2×6 matrix. The connection relationships among the first through third data lines **21**, **22**, **23**, the first and second common gate lines **11**, **12**, and the switching elements $Q_{501}, Q_{502}, Q_{503}, Q_{504}, Q_{505}, Q_{506}, Q_{507}, Q_{508}, Q_{509}, Q_{510}, Q_{511}, Q_{512}$ respectively included in the 12 pixels $P_1, P_2, P_3, P_4, P_5, P_6, P_7, P_8, P_9, P_{10}, P_{11}, P_{12}$, is described below in more detail.

[0094] In the first pixel row, first and second pixels P_1, P_2 and third to sixth pixels P_3, P_4, P_5, P_6 , respectively including third to sixth switching elements $Q_{503}, Q_{504}, Q_{505}, Q_{506}$, are along the first direction m. In the second pixel row, seventh to twelfth pixels $P_7, P_8, P_9, P_{10}, P_{11}, P_{12}$, respectively including seventh to twelfth elements $Q_{507}, Q_{508}, Q_{509}, Q_{510}, Q_{511}, Q_{512}$, are along the first direction m.

[0095] Here, the third switching element Q_{503} is connected to the second common gate line **12** and the second data line **22**. The fourth switching element Q_{504} is connected to the first common gate line **11** and the second data line **22**. The fifth switching element Q_{505} is connected to the second common gate line **12** and the second data line **22**. The sixth switching element Q_{506} is connected to the second common gate line **12** and the first data line **21**. The seventh switching element Q_{507} is connected to the first common gate line **11** and the third data line **23**. The eighth switching element Q_{508} is connected to the second common gate line **12** and the third data line **23**. The ninth switching element Q_{509} is connected to the second common gate line **12** and the first data line **21**. The tenth switching element Q_{510} is connected to the first common gate line **11** and the first data line **21**. The eleventh switching element Q_{511} is connected to the first common gate line **11** and the third data line **23**. The twelfth switching element Q_{512} is connected to the second common gate line **12** and the third data line **23**.

[0096] Accordingly, the pixel array of the LCD according to the exemplary embodiment of the present invention has the overall 2×6 matrix occurring at repeated intervals.

[0097] Referring to FIG. **5B**, a first signal and a second signal are alternately applied to the first to third data lines **21**, **22**, **23**, respectively, which is substantially the same as described for the exemplary embodiment of FIG. **4A** and a repeated explanation thereof will not be given.

[0098] FIG. **6A** illustrates a pixel array of an LCD according to an exemplary embodiment of the present invention, and FIG. **6B** illustrates that signals applied to data lines of the pixel array shown in FIG. **6A** are subjected to column inversion.

[0099] An LCD according to the exemplary embodiment of the present invention will be described with reference to FIGS. **6A** and **6B**. Aspects which are same as those described for the previous embodiments will not be repeated. The following description will focus on differences between the exemplary embodiment of FIG. **6A** and the exemplary embodiment of FIG. **5A**. Referring to FIG. **6A**, the first to third data lines **21**, **22**, **23** are such that 12 pixels included in the pixel array are in a 2×6 matrix C in FIG. **6A** and the first and second data lines **21**, **22** are such that the first pixel row is

between the first data line **21** and the second data line **22**. In addition, the second and third data lines **22**, **23** are such that the second pixel row is between the second data line **22** and the third data line **23**. The third and first data lines **23**, **21** are opposed to and substantially parallel to each other.

[0100] In addition, the LCD according to the exemplary embodiment of FIG. **6A** further includes a second common gate line **12**, which is substantially the same as described for the exemplary embodiment of FIG. **4A** and a repeated explanation thereof will not be given.

[0101] By the arrangement of the first through third data lines **21**, **22**, **23** and the first and second common gate lines **11**, **12**, 12 pixels $P_1, P_2, P_3, P_4, P_5, P_6, P_7, P_8, P_9, P_{10}, P_{11}, P_{12}$ in the portion C in FIG. **6A** are in a 2×6 matrix. The connection relationships among the first through third data lines **21**, **22**, **23**, the first and second common gate lines **11**, **12**, and switching elements $Q_{601}, Q_{602}, Q_{603}, Q_{604}, Q_{605}, Q_{606}, Q_{607}, Q_{608}, Q_{609}, Q_{610}, Q_{611}, Q_{612}$, respectively included in the 12 pixels $P_1, P_2, P_3, P_4, P_5, P_6, P_7, P_8, P_9, P_{10}, P_{11}, P_{12}$, is described below in more detail.

[0102] In the first pixel row, first and second pixels P_1, P_2 and third to sixth pixels P_3, P_4, P_5, P_6 , respectively including third to sixth switching elements $Q_{603}, Q_{604}, Q_{605}, Q_{606}$, are along the first direction m. In the second pixel row, seventh to twelfth pixels $P_7, P_8, P_9, P_{10}, P_{11}, P_{12}$, respectively including seventh to twelfth elements $Q_{607}, Q_{608}, Q_{609}, Q_{610}, Q_{611}, Q_{612}$, are along the first direction m.

[0103] Here, the third switching element Q_{603} is connected to the second common gate line **12** and the first data line **21**. The fourth switching element Q_{604} is connected to the first common gate line **11** and the first data line **21**. The fifth switching element Q_{605} is connected to the second common gate line **12** and the first data line **21**. The sixth switching element Q_{606} is connected to the second common gate line **12** and the second data line **22**. The seventh switching element Q_{607} is connected to the first common gate line **11** and the third data line **23**. The eighth switching element Q_{608} is connected to the second common gate line **12** and the second data line **22**. The ninth switching element Q_{609} is connected to the second common gate line **12** and the third data line **23**. The tenth switching element Q_{610} is connected to the first common gate line **11** and the second data line **22**. The eleventh switching element Q_{611} is connected to the first common gate line **11** and the third data line **23**. The twelfth switching element Q_{612} is connected to the second common gate line **12** and the third data line **23**.

[0104] Accordingly, the pixel array of the LCD according to the exemplary embodiment of FIG. **6A** has an overall 2×6 matrix occurring at repeated intervals.

[0105] Referring to FIG. **6B**, a first signal and a second signal are alternately applied to the first to third data lines **21**, **22**, **23**, respectively, which is substantially the same as described for the exemplary embodiment of FIG. **4A** and a repeated explanation thereof will not be given.

[0106] While the present invention has been particularly shown and described with reference to exemplary embodiments thereof, it will be understood by those of ordinary skill in the art that various changes in form and details may be made therein without departing from the spirit and scope of the present invention as defined by the following claims. It is therefore desired that the present embodiments be considered in all respects as illustrative and not restrictive, reference being made to the appended claims rather than the foregoing description to indicate the scope of the invention.

What is claimed is:

1. A liquid crystal display comprising:
 - a pixel array having a plurality of pixels in a matrix on a substrate, the matrix having at least a first pixel row and a second pixel row adjacent the first pixel row, both the first pixel row and the second pixel row extending in a first direction, a first pixel and a second pixel of the first pixel row being adjacent to each other along the first direction, the first pixel and the second pixel respectively including a first switching element and a second switching element;
 - a first common gate line that extends in a second direction different from the first direction and is commonly connected to the first switching element and to the second switching element; and
 - a first data line and a second data line that extend in the first direction and are connected to the first switching element and to the second switching element, respectively.
2. The liquid crystal display of claim 1, wherein the substrate has a long side and a short side, the long side being substantially parallel to the first direction, and the short side being substantially parallel to the second direction.
3. The liquid crystal display of claim 2, wherein a length of the first pixel in the second direction is greater than a length of the first pixel in the first direction.
4. The liquid crystal display of claim 1, wherein the pixel array alternately displays colors of red, green and blue in the first direction and displays the same color in the second direction.
5. The liquid crystal display of claim 1, wherein a pair of a first data line and a second data line are in each row of the pixel array.
6. The liquid crystal display of claim 5, wherein each of the pixels includes a switching element, respectively, and switching elements of a column of pixels in the pixel array are alternately connected to a first data line of a row and to a second data line in an adjacent row.
7. The liquid crystal display of claim 1, wherein:
 - a third data line is further provided on the substrate, the first data line, the second data line and the third data line are on the substrate at repeated intervals,
 - the second data line and the third data line are opposed to and substantially parallel to each other,
 - the first pixel row is between the first data line and the second data line, and
 - the second pixel row is between the third data line and the first data line.
8. The liquid crystal display of claim 7, wherein:
 - a second common gate line is further provided on the substrate,
 - the first common gate line and second common gate line are on the substrate at repeated intervals,
 - the second common gate line is adjacent to and substantially parallel to the first common gate line, and
 - the second pixel is between the first common gate line and the second common gate line.
9. The liquid crystal display of claim 8, wherein:
 - the pixel array includes six pixels in a 2x3 matrix, the six pixels including the first pixel, the second pixel, a third pixel, a fourth pixel, a fifth pixel and a sixth pixel,
 - the first pixel, the second pixel, and the third pixel having a third switching element, are in the first pixel row,
 - the fourth pixel, the fifth pixel and the sixth pixel, respectively including a fourth switching element, a fifth switching element and a sixth switching element, are in the second pixel row,
 - the third switching element is connected to the second common gate line and to the second data line,
 - the fourth switching element is connected to the first common gate line and to the third data line,
 - the fifth switching element is connected to the second common gate line and to the third data line, and
 - the sixth switching element is connected to the second common gate line and to the first data line.
10. The liquid crystal display of claim 9, wherein:
 - to the first data line, a first signal is consecutively applied twice followed by a second signal consecutively applied twice, at repeated intervals,
 - to the second data line, the second signal is consecutively applied twice followed by the first signal consecutively applied twice, at repeated intervals, and
 - to the third data line, the first signal is consecutively applied twice followed by the second signal consecutively applied twice, at repeated intervals.
11. The liquid crystal display of claim 9, wherein the first signal and the second signal are alternately applied to adjacent data lines.
12. The liquid crystal display of claim 1, wherein:
 - a third data line is further provided on the substrate,
 - the first data line, the second data line and the third data line are on the substrate at repeated intervals,
 - the third data line and the second data line are opposed to and substantially parallel to each other,
 - the first pixel row is between the second data line and the first data line, and the second pixel row is between the first data line and the third data line.
13. The liquid crystal display of claim 12, wherein:
 - a second common gate line is further provided on the substrate,
 - the first common gate line and the second common gate line are on the substrate at repeated intervals,
 - the second common gate line is adjacent to and substantially parallel to the first common gate line, and
 - the second pixel is between the first common gate line and the second common gate lines.
14. The liquid crystal display of claim 13, wherein:
 - the pixel array includes 12 pixels in a 2x6 matrix,
 - the first pixel row includes the first pixel, the second pixel, a third pixel, a fourth pixel, a fifth pixel and a sixth pixel, respectively including the first switching element, the second switching element, a third switching element, a fourth switching element, and a sixth switching element, along the first direction,
 - the second pixel row includes a seventh pixel, an eighth pixel, a ninth pixel, a tenth pixel, an eleventh pixel and a twelfth pixel, respectively including a seventh switching element, an eighth switching element, a ninth switching element, a tenth switching element, an eleventh switching element and a twelfth switching element, along the first direction,
 - the third switching element is connected to the second common gate line and to the second data line,
 - the fourth switching element is connected to a second first common gate line and to the second data line,

the fifth switching element is connected to a second second common gate line and to the second data line,
 the sixth switching element is connected to the second second common gate line and to the first data line,
 the seventh switching element is connected to the first common gate line and to the third data line,
 the eighth switching element is connected to the second common gate line and to the third data line,
 the ninth switching element is connected to the second common gate line and to the first data line,
 the tenth switching element is connected to the second first common gate line and to the first data line,
 the eleventh switching element is connected to the second first common gate line and to the third data line, and
 the twelfth switching element is connected to the second second common gate line and to the third data line.

15. The liquid crystal display of claim **14**, wherein the first signal and the second signal are alternately applied to adjacent data lines.

16. The liquid crystal display of claim **1**, wherein:
 a third data line is further provided on the substrate,
 the first data line, the second data line and the third data line are on the substrate at repeated intervals,
 the third data line and the first data line are opposed to and substantially parallel to each other,
 the first pixel row is between the first data line and the second data line, and
 the second pixel row is between the second data line and the third data line.

17. The liquid crystal display of claim **16**, wherein:
 a second common gate line is further provided on the substrate,
 the first common gate line and the second common gate line are on the substrate at repeated intervals,
 the second common gate line is adjacent to and substantially parallel to the first common gate line, and
 the second pixel is between the first common gate line and the second common gate line.

18. The liquid crystal display of claim **17**, wherein:
 the pixel array includes 12 pixels in a 2×6 matrix,
 the first pixel row includes the first pixel, the second pixel, a third pixel, a fourth pixel, a fifth pixel and a sixth pixel, respectively including the first switching element, the second switching element, a third switching element, a fourth switching element, a fifth switching element and a sixth switching element, along the first direction,
 the second pixel row includes a seventh pixel, an eighth pixel, a ninth pixel, a tenth pixel, an eleventh pixel and a twelfth pixel, respectively including a seventh switching element, an eighth switching element, a ninth switching element, a tenth switching element, an eleventh switching element and a twelfth switching element, along the first direction,
 the third switching element is connected to the second common gate line and to the first data line,
 the fourth switching element is connected to a second first common gate line and to the first data line,
 the fifth switching element is connected to a second second common gate line and to the first data line,
 the sixth switching element is connected to the second second common gate line and to the second data line,
 the seventh switching element is connected to the first common gate line and to the third data line,
 the eighth switching element is connected to the second common gate line and to the second data line,
 the ninth switching element is connected to the second common gate line and to the third data line,
 the tenth switching element is connected to the second first common gate line and to the second data line,
 the eleventh switching element is connected to the second first common gate line and to the third data line, and
 the twelfth switching element is connected to the second second common gate line and to the third data line.

19. The liquid crystal display of claim **18**, wherein the first signal and the second signal are alternately applied to adjacent data lines.

* * * * *

专利名称(译)	液晶显示器		
公开(公告)号	US20100156771A1	公开(公告)日	2010-06-24
申请号	US12/625298	申请日	2009-11-24
[标]申请(专利权)人(译)	李凤JUN 李钟HWAN		
申请(专利权)人(译)	李凤JUN 李钟HWAN		
当前申请(专利权)人(译)	李凤JUN 李钟HWAN		
[标]发明人	LEE BONG JUN LEE JONG HWAN		
发明人	LEE, BONG-JUN LEE, JONG-HWAN		
IPC分类号	G09G3/36		
CPC分类号	G02F1/136286 G09G3/3614 G09G2310/0205 G09G2300/0426 G09G3/3648		
优先权	1020080129430 2008-12-18 KR		
其他公开文献	US9024850		
外部链接	Espacenet USPTO		

摘要(译)

提供一种液晶显示器。液晶显示器包括像素阵列，该像素阵列在基板上具有矩阵中的多个像素。第一和第二像素沿第一方向彼此相邻。第一和第二像素均包括第一和第二开关元件。第一公共栅极线在不同于一方向的第二方向上延伸，并且共同连接到第一和第二开关元件。第一和第二数据线在第一方向上延伸并分别连接到第一和第二开关元件。

