



US 20010035920A1

(19) **United States**(12) **Patent Application Publication**
Choi(10) **Pub. No.: US 2001/0035920 A1**(43) **Pub. Date: Nov. 1, 2001**(54) **REPAIR STRUCTURE FOR LIQUID
CRYSTAL DISPLAY AND METHOD OF
REPAIRING THE SAME****Publication Classification**(51) **Int. Cl.⁷** **G02F 1/1333; G02F 1/1343**(52) **U.S. Cl.** **349/54; 349/139**(75) **Inventor: Woo Hyuk Choi, Kyongsangbuk-do
(KR)**

Correspondence Address:
Morgan, Lewis & Bockins LLP
1800 M Street, N.W.
Washington, DC 20036-5869 (US)

(73) **Assignee: LG. Philips LCD Co., Ltd.**(21) **Appl. No.: 09/843,781**(22) **Filed: Apr. 30, 2001**(30) **Foreign Application Priority Data**

May 1, 2000 (KR) 2000-23332

(57) **ABSTRACT**

The present invention discloses a repair structure for a liquid crystal display and a method of repairing the same to repair a defect caused by a short circuit between a scan line and a data line. More specifically, a repair structure for a liquid crystal display having a substrate includes a scan line on the substrate, a data line crossing the scan line and having first, second, and third segments, wherein the second segment is an electrically isolated from the first and third segments and located at a portion where the scan line and the data line overlap, and a repair pattern electrically isolated from the second segment and electrically connecting the first segment with the third segment of the data line.

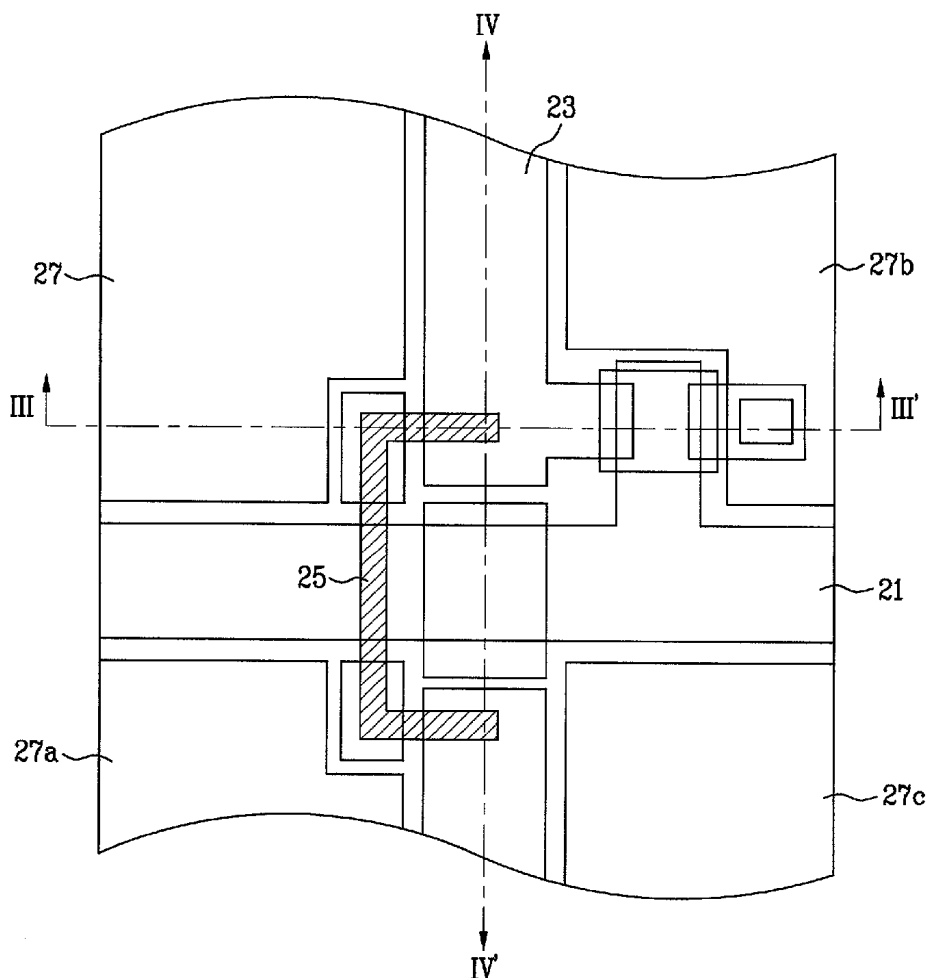


FIG.1
Related Art

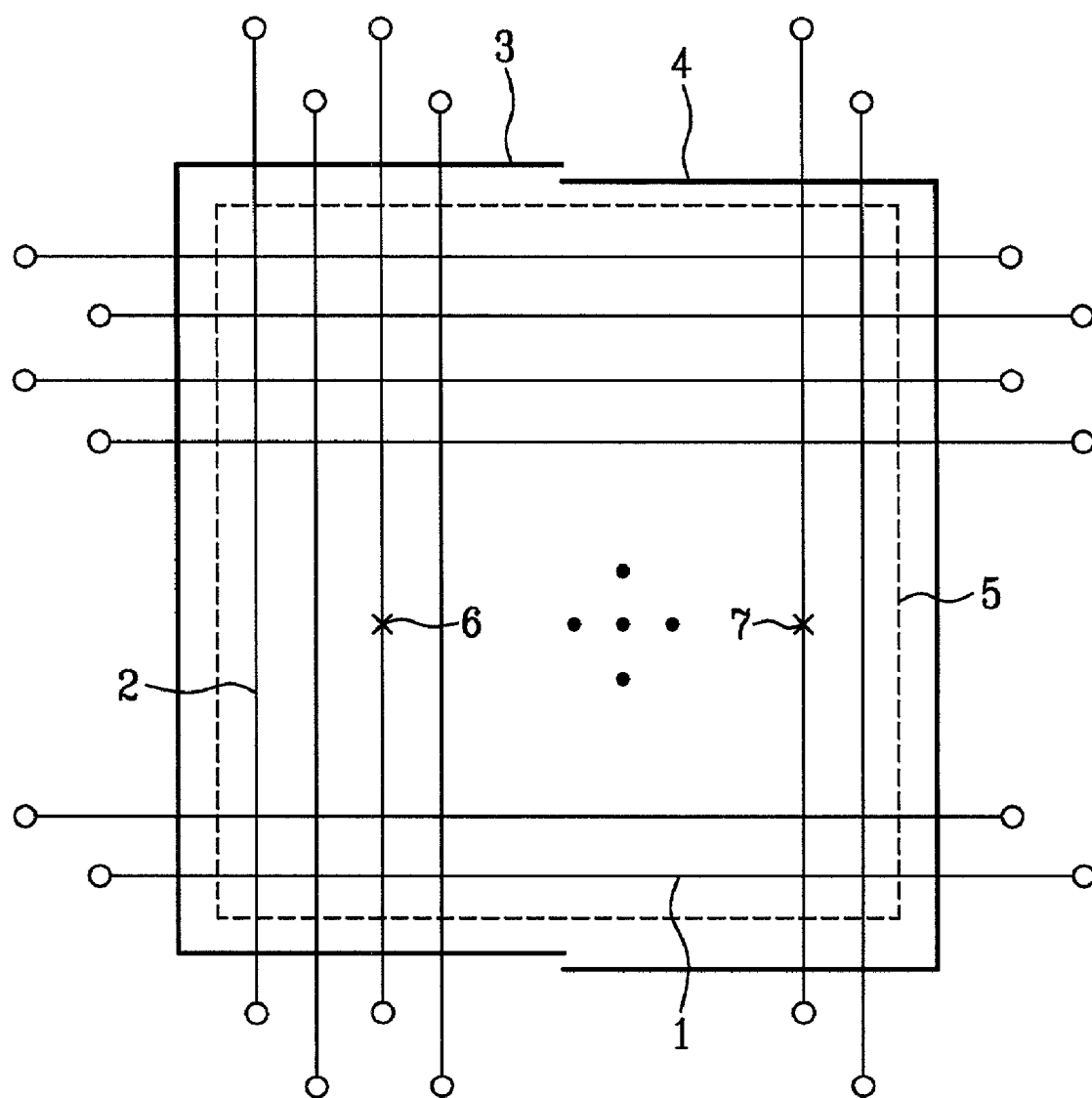


FIG. 2

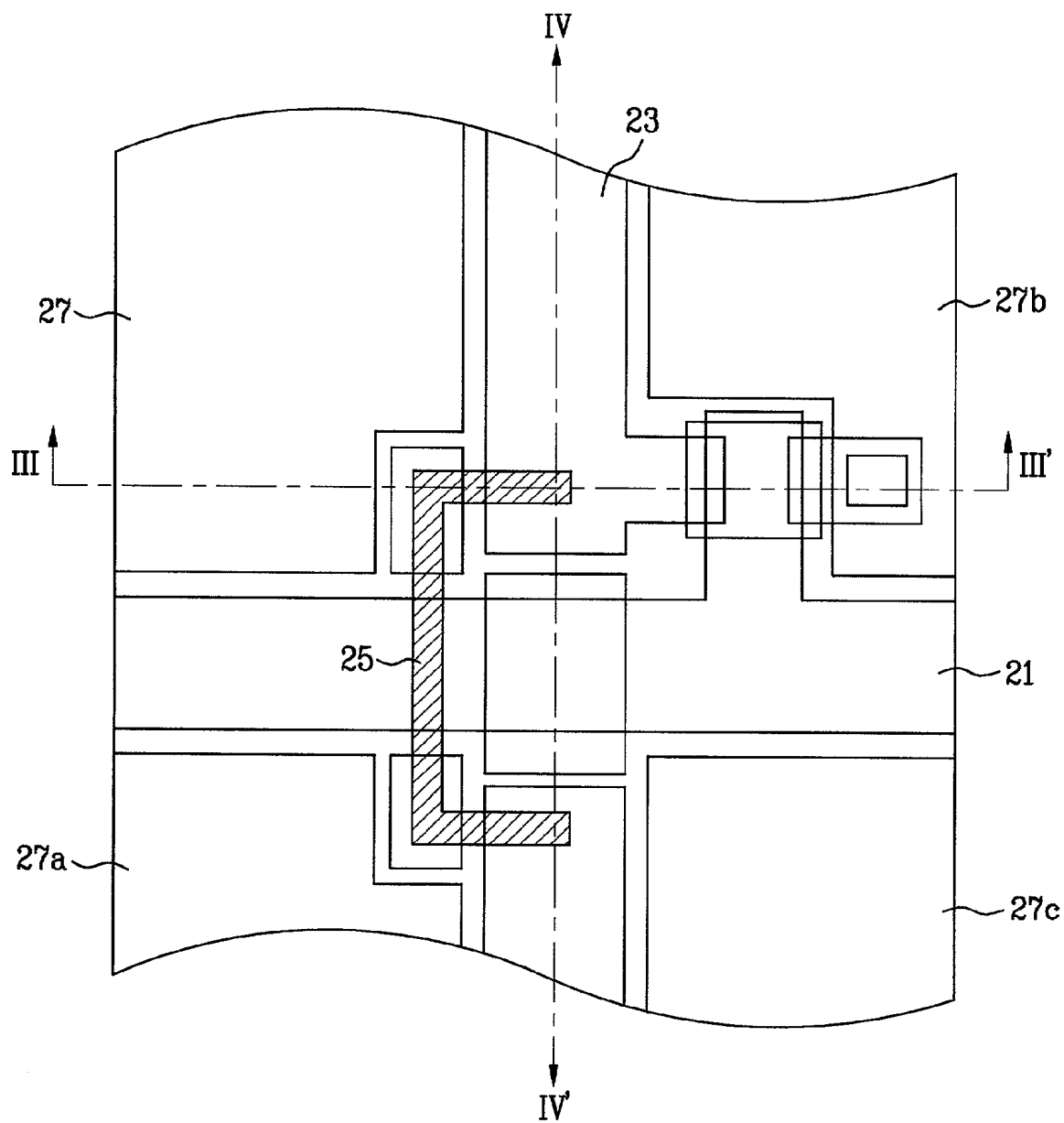


FIG. 3A

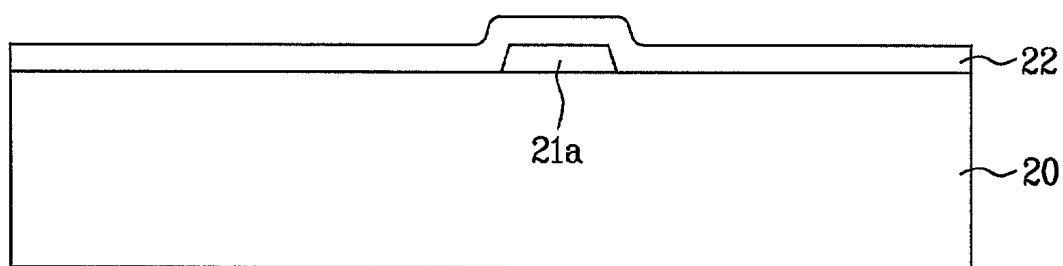


FIG. 3B

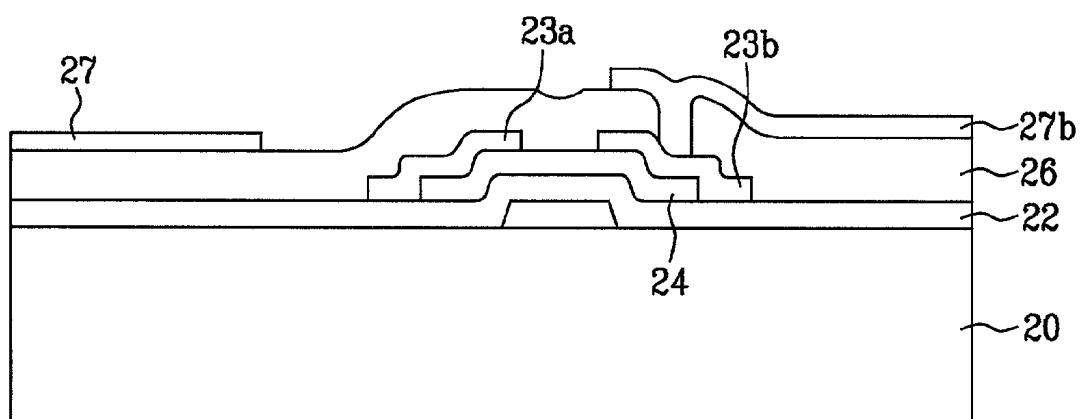


FIG. 3C

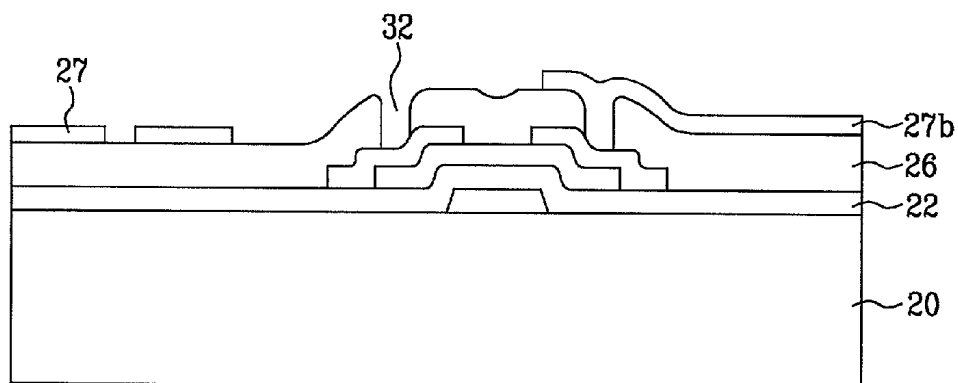


FIG. 3D

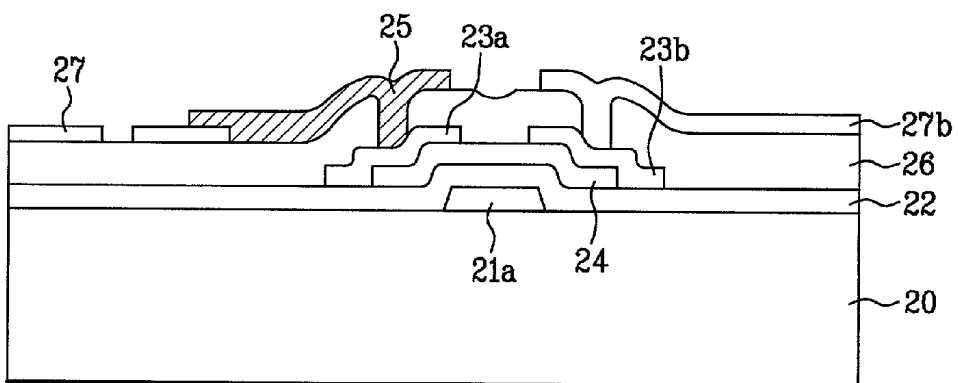


FIG. 4A

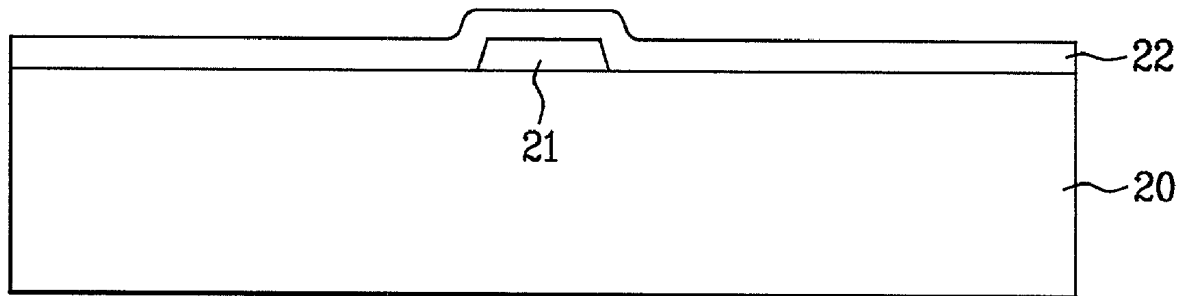


FIG. 4B

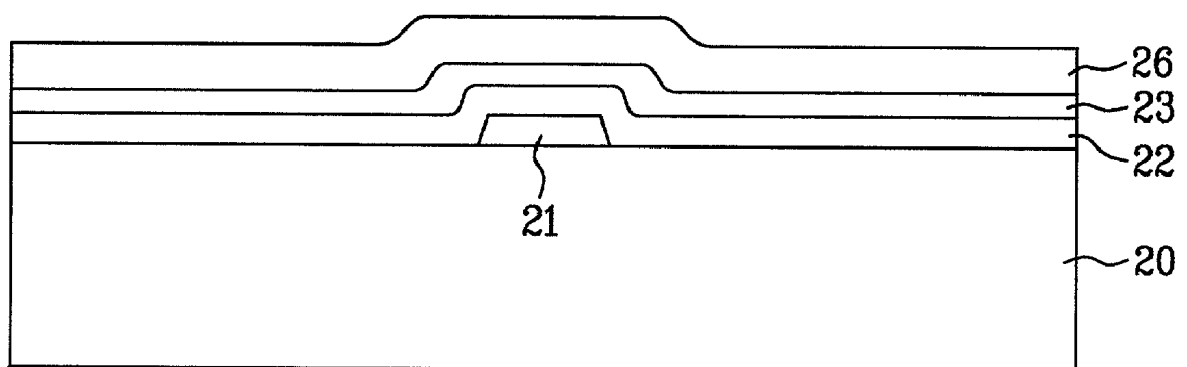


FIG. 4C

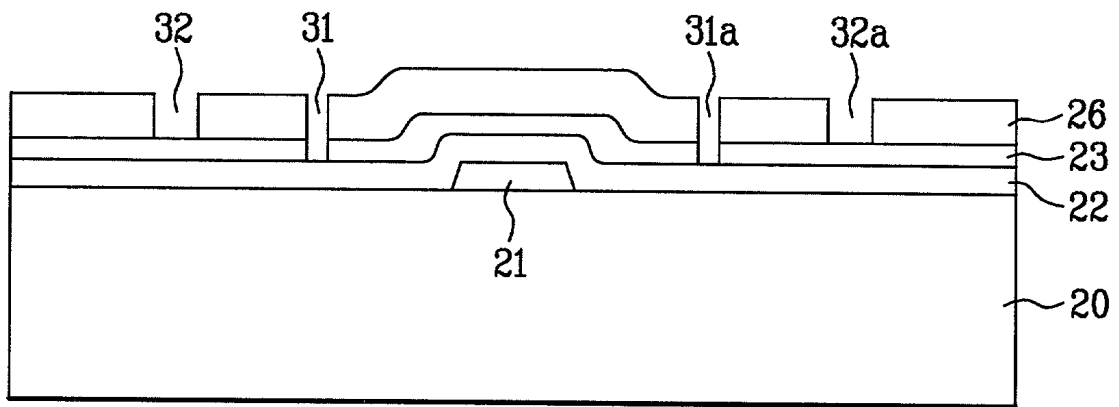


FIG. 4D

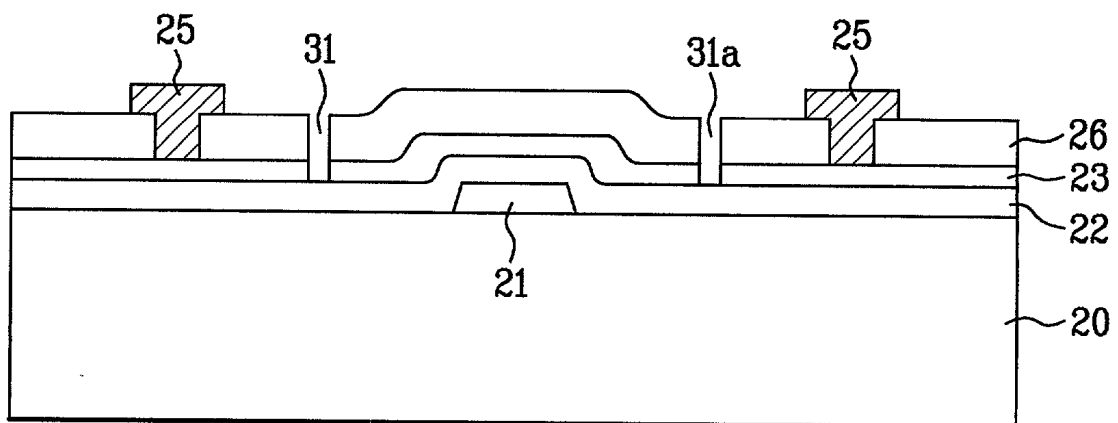


FIG. 5

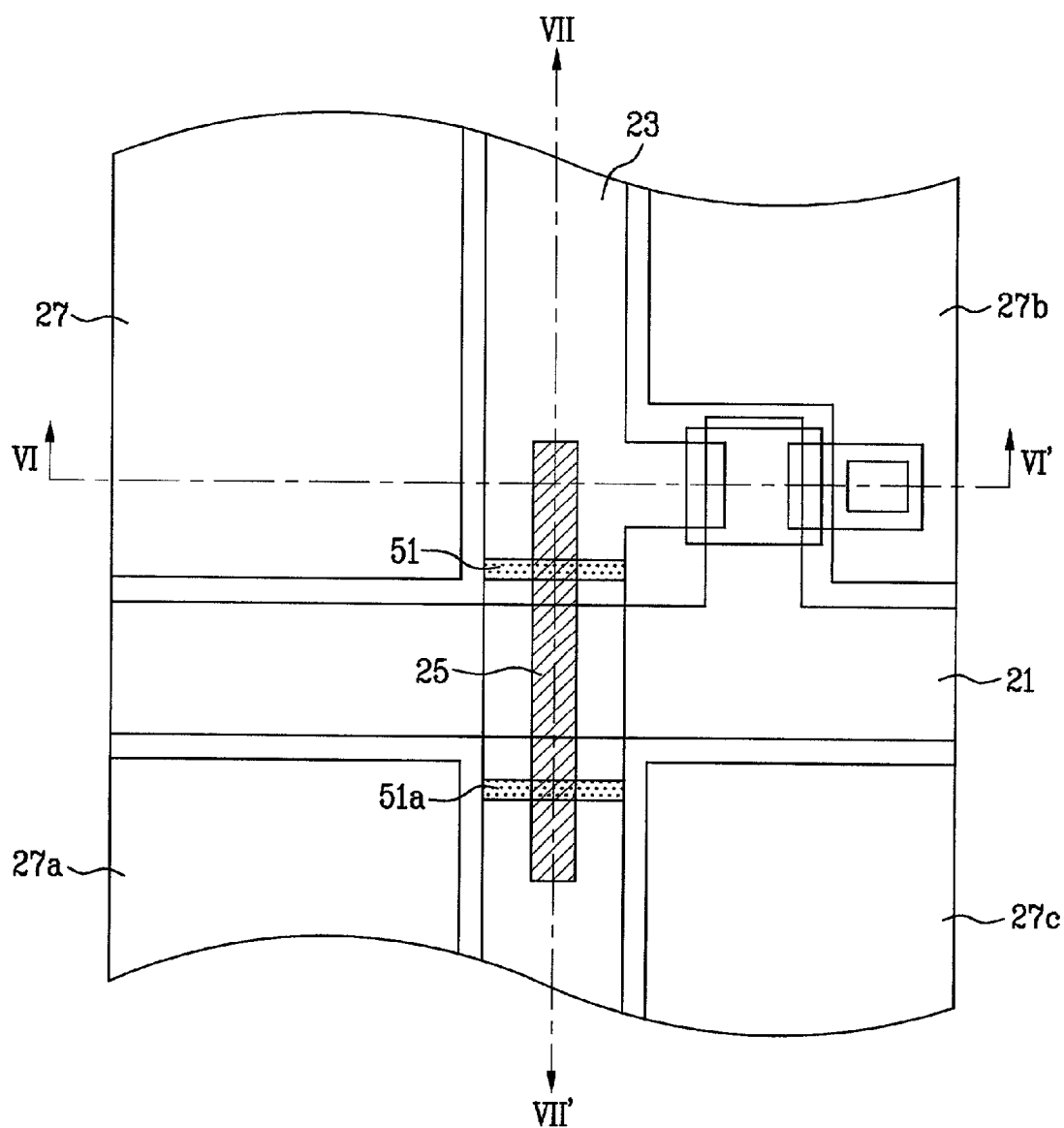


FIG. 6A

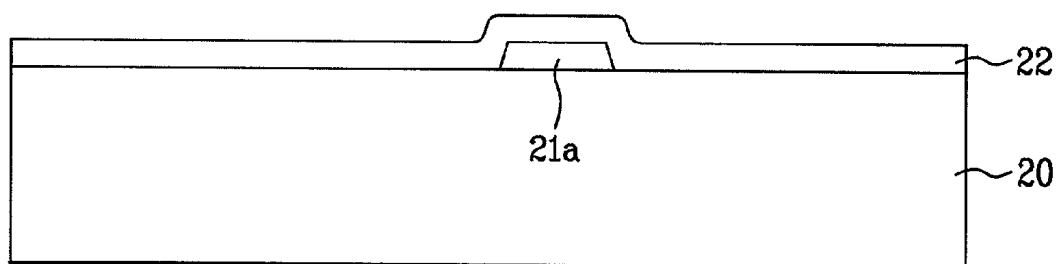


FIG. 6B

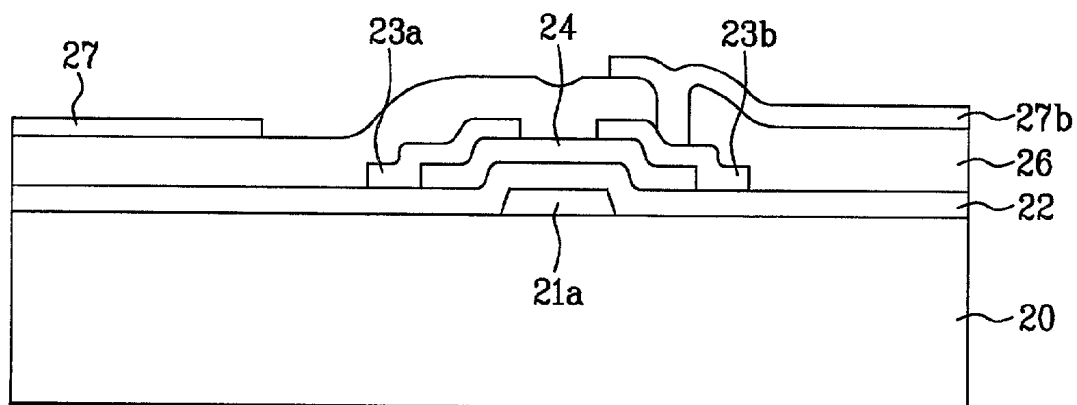


FIG. 6C

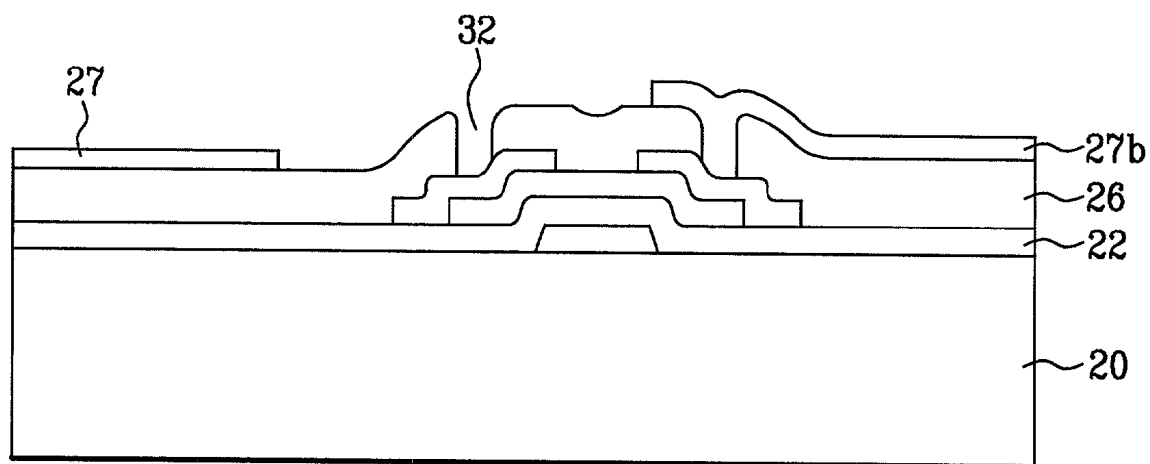


FIG. 6D

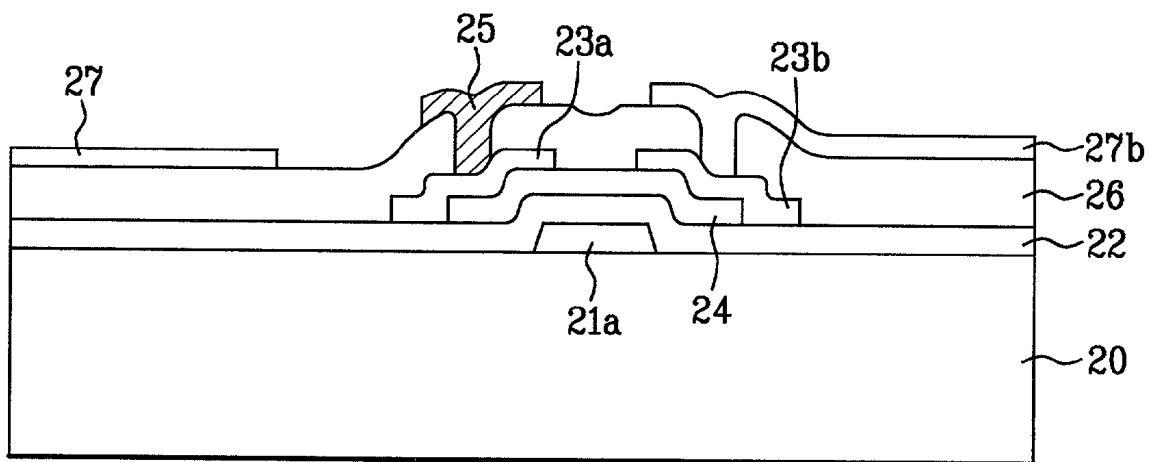


FIG. 7A

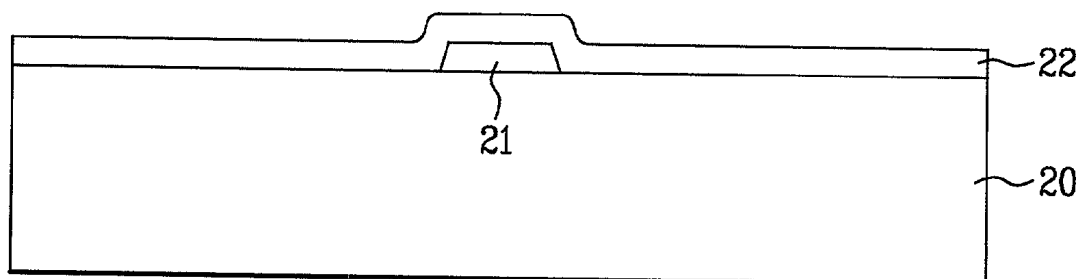


FIG. 7B

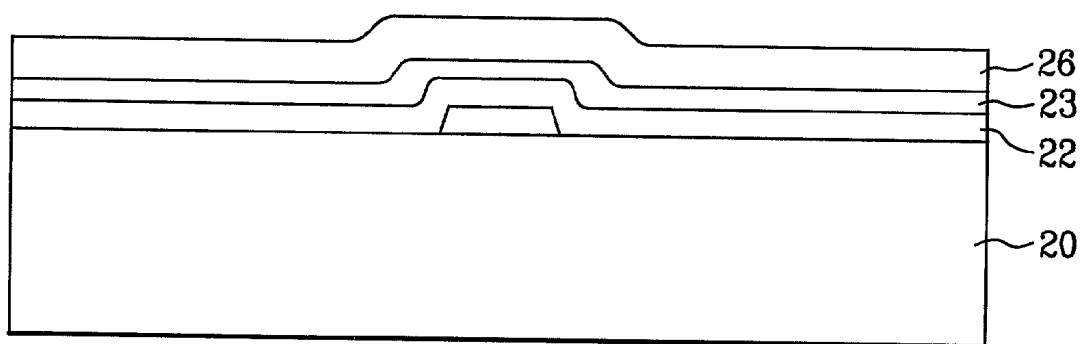


FIG. 7C

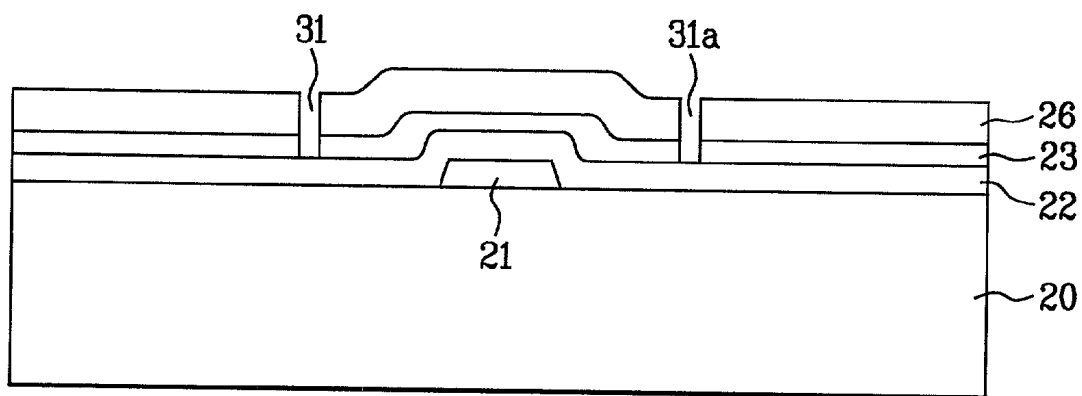


FIG. 7D

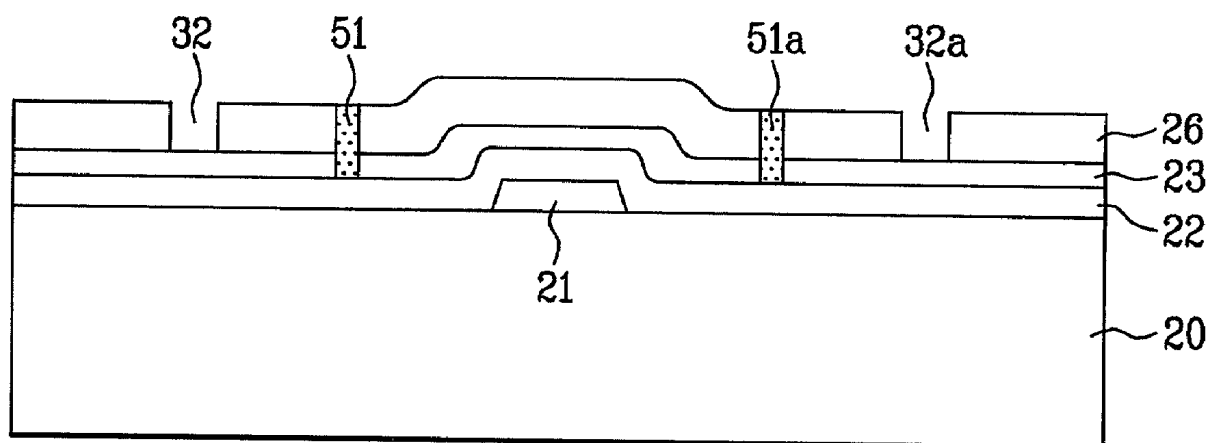


FIG. 7E

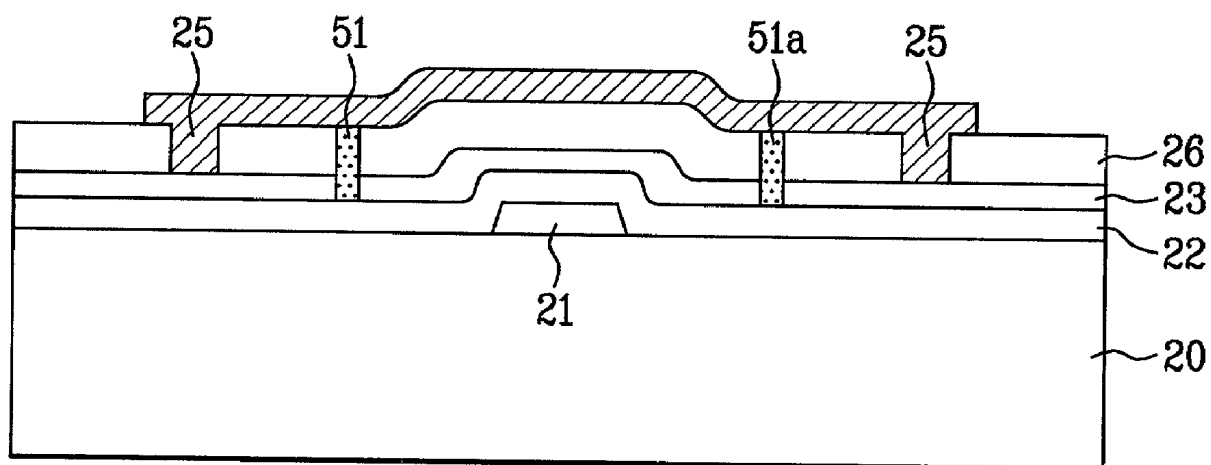


FIG. 8

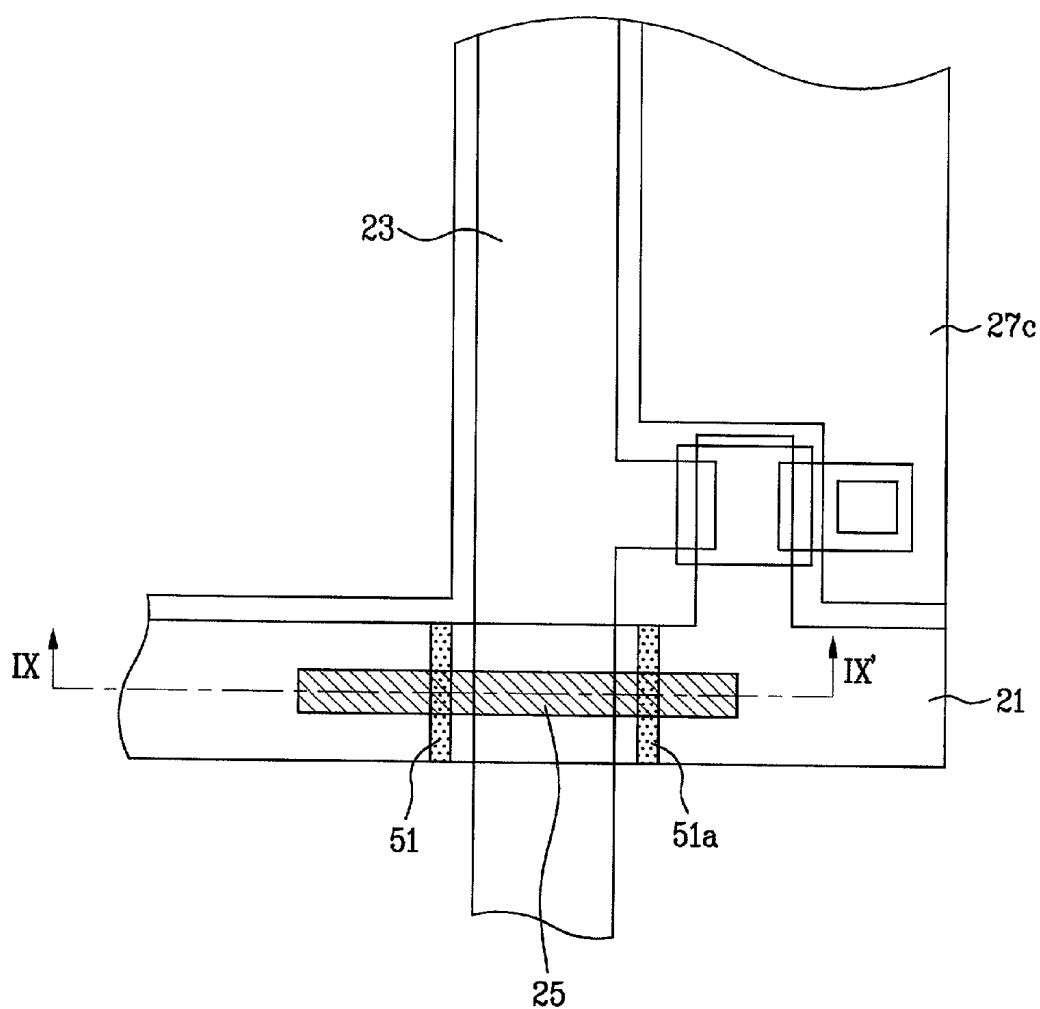
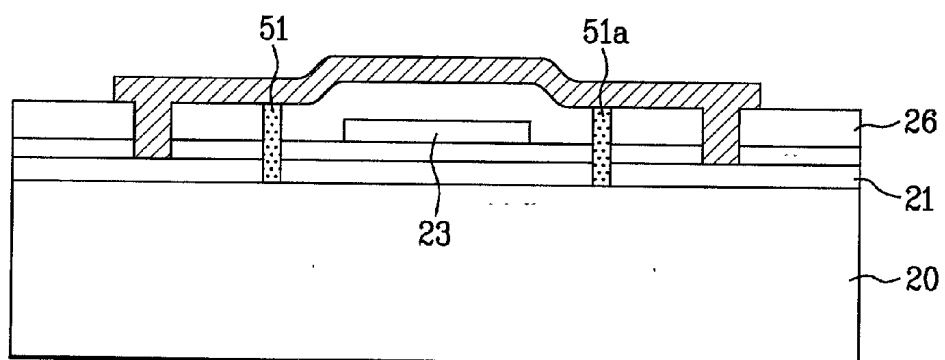


FIG. 9



REPAIR STRUCTURE FOR LIQUID CRYSTAL DISPLAY AND METHOD OF REPAIRING THE SAME

[0001] This application claims the benefit of Korean Patent application No. P2000-23332 filed on May 1, 2000, which is hereby incorporated by reference.

BACKGROUND OF THE INVENTION

[0002] 1. Field of the Invention

[0003] The present invention relates to a liquid crystal display (LCD), and more particularly, to a repair structure for an LCD and a method of repairing the same. Although the present invention is suitable for a wide scope of applications, it is particularly suitable for repairing a defect due to a short circuit between the lines of the LCD.

[0004] 2. Discussion of the Related Art

[0005] A cathode ray tube (CRT) is a display device used as a monitor for information terminals and measuring instruments such as a TV. However, the CRT has not been widely applied in modern electronics due to its weight and size.

[0006] To substitute for such a CRT, an LCD having a small size and lightweight has been actively developed. Recently, the LCD has been developed for a flat panel display device. Thus, a demand of the LCD device is consistently increasing.

[0007] An amorphous silicon thin film transistor (TFT) is used as a switching element in a TFT-LCD that can be fabricated with a low cost and a high performance. Currently, the LCD is able to display a video graphic array (VGA) having a maximum high resolution of 640×480 pixels as well as an SVGA having a high resolution of 800×600 pixels and an XGA having a high resolution of 1024×768 pixels.

[0008] Development and application of the TFT-LCD industries have been accelerated in accordance with an increase in dimension and resolution. To increase productivity and ensure a low cost, many efforts have been made in view of simplifying the process steps and improving yield.

[0009] A related art method for repairing an LCD device will now be described with reference to the accompanying drawings.

[0010] As shown in FIG. 1, a plurality of scan lines 1 are arranged on an insulating substrate at constant intervals and a plurality of data lines 2 are arranged to cross the respective scan lines 1, so that pixel regions are defined in a matrix arrangement. A thin film transistor (TFT) (not shown) and a pixel electrode (not shown) are arranged in each pixel region to constitute a TFT-LCD array 5.

[0011] The TFT-LCD array 5 surrounded by repair lines 3 and 4 has a closed circuit or two open points. As shown in FIG. 1, if the repair lines 3 and 4 having two open points are formed, they are separated from each other at a constant interval in the opposing portion.

[0012] For example, if a line opening 6 occurs in the data lines 2, the repair line 3 is electrically connected with one side of the opened data line 2 at one side of the TFT-LCD array 5. The repair line 3 is also electrically connected with

the other side of the opened data line 2 at the other side of the TFT-LCD array 5. Thus, a signal to be applied to the opened data line is transmitted thereto through the repair line 3, thereby repairing the line opening 6 of the data line 2.

[0013] However, the related art repair structure for an LCD device and a method for repairing the same have the following problems.

[0014] If the repair lines are formed along the periphery of the TFT-LCD array, a resistance of the repair lines is significant. Moreover, in light of increase of the panel size, there is a limitation in forming the repair lines along the periphery of the TFT-LCD array.

[0015] In addition, if a defect occurs in respective lines such as scan lines or data lines, the respective lines with the defect can be repaired. However, if a defect occurs due to a short circuit between the scan line and the data line, the lines with the defect cannot be repaired. As a result, it is difficult to improve yield in fabricating an LCD.

SUMMARY OF THE INVENTION

[0016] Accordingly, the present invention is directed to a repair structure for an LCD device and a method for repairing the same that substantially obviate one or more of the problems due to limitations and disadvantages of the related art.

[0017] An object of the present invention is to provide a repair structure for an LCD device and a method for repairing the same in which a repair line in a portion where a gate line and a data line cross each other within a TFT-LCD array to repair a short circuit between a scan line and the data line by a laser induced chemical vapor deposition (CVD) method, thereby improving yield.

[0018] Additional features and advantages of the invention will be set forth in the description that follows, and in part will be apparent from the description, or may be learned by practice of the invention. The objectives and other advantages of the invention will be realized and attained by the scheme particularly pointed out in the written description and claims hereof as well as the appended drawings.

[0019] To achieve these and other advantages and in accordance with the purpose of the present invention, as embodied and broadly described, a repair structure for a liquid crystal display having a substrate includes a scan line on the substrate, a data line crossing the scan line and having first, second, and third segments, wherein the second segment is an electrically isolated from the first and third segments and located at a portion where the scan line and the data line overlap, and a repair pattern electrically isolated from the second segment and electrically connecting the first segment with the third segment of the data line.

[0020] In another aspect of the present invention, a repair structure for a liquid crystal display having a substrate includes a data line on the substrate, a scan line crossing the scan line and having first, second, and third segments, wherein the second segment is an electrically isolated from the first and third segments and located at a portion where the scan line and the data line overlap; and a repair pattern electrically isolated from the second segment and electrically connecting the first segment with the third segment of the scan line.

[0021] In another aspect of the present invention, a method of repairing a liquid crystal display having a plurality of scan lines and data lines which are arranged to cross each other includes the steps of electrically isolating a portion of the data lines that are short circuited with the scan lines where the data line and scan lines are overlapped, thereby forming first, second, and third segments of the data lines, wherein the isolated portion is the second segment, forming contact holes over each of the first and third segments of the data lines, and forming a repair pattern electrically connecting the first and third segments of the data lines through the contact holes, wherein the repair pattern is electrically isolated from the scan lines.

[0022] In a further aspect of the present invention, A method of repairing a liquid crystal display having a plurality of scan lines and data lines which are arranged to cross each other includes the steps of electrically isolating a portion of the scan lines that are short circuited with the data lines where the data line and scan lines are overlapped, thereby forming first, second, and third segments of the scan lines, wherein the isolated portion is the second segment, forming contact holes over each of the first and third segments of the scan lines, and forming a repair pattern electrically connecting the first and third segments of the scan lines through the contact holes, wherein the repair pattern is electrically isolated from the data lines.

[0023] It is to be understood that both the foregoing general description and the following detailed description are exemplary and explanatory and are intended to provide further explanation of the invention as claimed.

BRIEF DESCRIPTION OF THE DRAWINGS

[0024] The accompanying drawings, which are included to provide a further understanding of the invention and are incorporated in and constitute a part of this application, illustrate embodiments of the invention and together with the description serve to explain the principle of the invention.

[0025] In the drawings:

[0026] FIG. 1 is a plane view of an LCD illustrating a related art repair structure;

[0027] FIG. 2 is a plane view of an LCD illustrating a repair structure according to a first embodiment of the present invention;

[0028] FIGS. 3A to 3D are cross-sectional views taken along the line III-III' of FIG. 2;

[0029] FIGS. 4A to 4D are cross-sectional views taken along the line IV-IV' of FIG. 2;

[0030] FIG. 5 is a plane view of an LCD illustrating a repair structure according to a second embodiment of the present invention;

[0031] FIGS. 6A to 6D are cross-sectional views taken along the line VI-VI' of FIG. 5;

[0032] FIGS. 7A to 7E are cross-sectional views taken along the line VII-VII' of FIG. 5;

[0033] FIG. 8 is a plane view of an LCD illustrating a repair structure according to a third embodiment of the present invention; and

[0034] FIG. 9 is a cross-sectional view taken along the line IX-IX' of FIG. 8.

DETAILED DESCRIPTION OF THE PREFERRED EMBODIMENTS

[0035] Reference will now be made in detail to the preferred embodiments of the present invention, examples of which are illustrated in the accompanying drawings.

[0036] FIG. 2 is a plane view of an LCD illustrating a repair structure according to a first embodiment of the present invention. In this embodiment, a data line is repaired when a short circuit occurs between a scan line and the data line.

[0037] More specifically, the repair structure according to the first embodiment includes a scan line 21 formed in one direction, a data line 23 arranged to cross the scan line 21 and cut at both sides of the scan line 21, a contact hole (not shown) formed in each of the cut data lines 23, and a repair pattern 25 insulated from the scan line 21, for electrically connecting the cut data lines 23 with each other through the contact hole.

[0038] The repair pattern 25 is bypassed toward pixel electrodes 27 and 27a adjacent to the data line 23 to overlap the pixel electrodes 27 and 27a. The data line 23 is cut by a laser.

[0039] As shown in FIG. 2, since the repair pattern 25 is formed in a "[" shape, the pixel electrode 27 electrically connected with the repair pattern 25 is cut by a laser. At this time, both the pixel electrodes 27 and 27a at the upper and lower portions around the scan line 21 may be cut. Alternatively, any one of the pixel electrodes 27 and 27a may be cut as shown in FIG. 2.

[0040] If any one of the pixel electrodes 27 and 27a is cut, the cut pixel electrode is normally operated. However, the uncut pixel electrode exists as a defective pixel electrode.

[0041] For example, the repair pattern 25 may be formed of a metal such as W, Mo, Ni, Cr, and Fe.

[0042] A method of repairing an LCD according to the first embodiment will now be described with reference to FIGS. 3A to 3D and FIGS. 4A to 4D.

[0043] FIGS. 3A to 3D are cross-sectional views taken along the line III-III' of FIG. 2 while FIGS. 4A to 4D are cross-sectional views taken along the line IV-IV' of FIG. 2.

[0044] As shown in FIGS. 3A and 4A, a scan line 21 and a gate electrode 21a are formed on an insulating substrate 20. A gate insulating layer 22 is formed on the entire surface including the scan line 21 and the gate electrode 21a.

[0045] As shown in FIGS. 3B and 4B, a semiconductor layer 24 is deposited on the entire surface of the gate insulating layer 22 and then patterned to remain on the gate insulating layer 22 over the gate electrode 21a in an island shape. A data line 23 is formed to cross the scan line 21, and a drain electrode 23b is formed at the portion opposite to a source electrode 23a, extended from the data line 23, on the semiconductor layer 24.

[0046] Afterwards, a passivation layer 26 is formed on the entire surface including the data line 23 and the source and drain electrodes 23a and 23b. A pixel electrode 27b is

formed to electrically connect with the drain electrode **23b**. Then, a TFT-LCD array having thin film transistors and pixel electrodes is completed.

[0047] The reference numeral **27** of **FIG. 3B**, which is not described above, denotes a pixel electrode.

[0048] As described above, in the TFT-LCD array having TFTs and pixel electrodes, when a short circuit is generated between the gate line and the data line, a repair process is performed as follows.

[0049] As shown in **FIGS. 3C and 4C**, when a short circuit between the scan line **21** and the data line **23** occurs in the portion where the scan line **21** and the data line **23** cross each other, the data line **23** at both sides of the scan line **21** is cut by a laser to form opening regions **31** and **31a**. Contact holes **32** and **32a** are formed using a laser to expose a predetermined portion of the data line **23** at both sides of the scan line **21**. The pixel electrode **27** is then cut by a laser.

[0050] As shown in **FIGS. 3D and 4D**, a repair pattern **25** is formed by a laser induced CVD method to connect to the data line **23** at both sides of the scan line **21** through the contact holes **32** and **32a**. Thus, the repair process of the LCD according to the first embodiment of the present invention is completed.

[0051] The repair pattern **25** is bypassed to the pixel electrode **27** adjacent to the data line **23** to overlap the pixel electrode **27**. If the repair pattern **25** is formed along the upper portion of the data line **23**, the repair pattern **25** is buried in the open regions **31** and **31a**. For this reason, the scan line can be electrically connected to the data line **23**.

[0052] Accordingly, to prevent the scan line from being electrically connected to the data line **23**, the repair pattern **25** should not be formed along the data line **23** but bypasses to the pixel electrodes **27** and **27a**.

[0053] At this time, as shown in **FIGS. 2 and 3D**, since the repair pattern **25** is electrically connected to the pixel electrodes **27** and **27a**, it is necessary to cut the pixel electrodes **27** and **27a** using a laser. As shown in **FIG. 2**, if only the pixel electrode **27** over the scan line **21** is cut, the cut pixel electrode is normally operated but the pixel electrode **27a** below the scan line **21** (which is not cut) exists as a defect pixel electrode.

[0054] If both the pixel electrodes **27** and **27a** over and below the scan line **21** are cut, they are normally operated.

[0055] For example, the repair pattern **25** may be formed of a metal such as W, Mo, Ni, Cr, and Fe.

[0056] As described above, in the first embodiment of the present invention, if the scan line **21** and the data line **23** are electrically short-circuited, the data line **23** at both sides of the scan line **21** is cut by a laser and the repair pattern **25**, which directly connects the cut data lines with each other, is formed by a laser CVD method.

[0057] The repair structure for an LCD and a method of repairing the same according to a second embodiment of the present invention will now be described with reference to **FIG. 5**.

[0058] As shown in **FIG. 5**, in the repair structure according to the second embodiment of the present invention, a

repair pattern **25** does not bypass to pixel electrodes **27** and **27a** but formed along a data line **23** at the upper portion of the data line **23**.

[0059] To form the repair pattern **25** at the upper portion of the data line **23**, it is necessary to bury opening regions of the data line **23** with an insulating material **51** and **51a**. In other words, if the opening regions are not buried with the insulating material **51** and **51a**, the metal used as the repair pattern **25** is buried in the opening regions. For this reason, the data line **23** short-circuited from the scan line **21** may be electrically connected to the scan line **21**. Accordingly, the opening regions should be buried with the insulating material **51** and **51a**.

[0060] The above-mentioned features will be described in more detail with reference to **FIGS. 6A to 6D** and **FIGS. 7A to 7D**.

[0061] **FIGS. 6A, 6B, 7A, and 7B** illustrate a manufacturing process for forming a TFT. Since the process for forming a TFT has been described in the first embodiment of the present invention, the description will be omitted in the second embodiment.

[0062] As shown in **FIGS. 6B and 7B**, a TFT-LCD array is formed to have a TFT and pixel electrodes. When a short-circuit between a scan line and a data line occurs in the portion where the scan line and the data line cross each other a repair process of the second embodiment is performed as follows.

[0063] In **FIG. 7C**, the data line **23** at both sides of the scan line **21** is cut by a laser, thereby forming opening regions **31** and **31a**.

[0064] As shown in **FIGS. 6C and 7D**, insulating materials **51** and **51a** are filled in the opening regions **31** and **31a**. Thereafter, contact holes **32** and **32a** are formed by a laser to expose a predetermined portion of the data line **23** at both sides of the scan line **21**.

[0065] **FIGS. 6D and 7E** illustrate that a repair pattern **25** is formed on a passivation layer **26** over the data lines **23** along the data line **23** by the laser CVD method. The data lines **23** at both sides of the scan line **21** are connected with each other through the contact holes **32** and **32a**. Thus, the repair process of the LCD device according to the second embodiment of the present invention is completed.

[0066] For example, the repair pattern **25** may be formed of a metal such as W, Mo, Ni, Cr, and Fe.

[0067] In the second embodiment of the present invention, the repair pattern **25** does not bypass to the pixel electrodes **27** and **27a** but formed along the data lines **23** at the upper portion of the data lines **23**. Accordingly, it is not necessary to cut some of the pixel electrodes **27** and **27a** adjacent to the data lines **23**. As a result, the pixel electrodes have no defect in this embodiment.

[0068] Meanwhile, in the first and second embodiments of the present invention, if a short-circuit occurs between the scan lines and the data lines, only the data lines are cut. In a third embodiment of the present invention, only scan lines may be cut in repairing a short-circuit.

[0069] **FIG. 8** is a plane view of an LCD illustrating a repair structure according to the third embodiment of the

present invention while **FIG. 9** is a cross-sectional view taken along the line IX-IX' of **FIG. 8**.

[0070] As shown in **FIGS. 8 and 9**, the scan line **21** arranged to cross the data line **23** at the lower portion of the data line **23** is cut using a laser at both sides of the data line **23**. Then, contact holes are formed using a laser to expose the scan lines **21** at both sides of the data line **23**.

[0071] Afterwards, the cut portions are buried with the insulating material **51** and **51a** and then the repair pattern **25** is formed by a laser CVD method to connect with the scan lines through the contact holes.

[0072] As described above, unlike the first and second embodiments of the present invention, the scan line **21** arranged to cross the data line **23** is cut at both sides of the data line **23** in the third embodiment. Thereafter, the repair pattern **25** is formed along the scan line **21** at the upper portion of the scan line **21**.

[0073] As aforementioned, the repair structure for an LCD and the method for repairing the same according to the present invention have the following advantages.

[0074] A repair pattern is selectively formed at the portion where a short-circuit between the lines occurs. Therefore, with increase in size of the panel, resistance of the repair pattern does not increase.

[0075] In addition, since the repair pattern is readily formed by laser induced CVD, defects due to a short-circuit between the scan line and the data line are repaired. As a result, yield is much improved.

[0076] It will be apparent to those skilled in the art that various modifications and variations can be made in the method of the repair structure for the liquid crystal display and the method of repairing the same of the present invention without departing from the spirit or scope of the inventions. Thus, it is intended that present invention covers the modifications and variations of this invention provided they come within the scope of the appended claims and their equivalents.

What is claimed is:

1. A repair structure for a liquid crystal display having a substrate, comprising:

a scan line on the substrate;

a data line crossing the scan line and having first, second, and third segments, wherein the second segment is an electrically isolated from the first and third segments and located at a portion where the scan line and the data line overlap; and

a repair pattern electrically isolated from the second segment and electrically connecting the first segment with the third segment of the data line.

2. The repair structure according to claim 1, wherein the repair pattern bypasses to pixel electrodes adjacent to the data line and has a portion overlapping the pixel electrodes.

3. The repair structure according to claim 2, wherein a portion of the pixel electrodes overlapped the repair pattern is electrically isolated from other portion of the pixel electrodes.

4. The repair structure according to claim 1, wherein the repair pattern is formed along an upper portion of the data line.

5. The repair structure according to claim 1, further comprising an insulating material formed between the first and second segments of the data line and the second and third segments of the data line.

6. The repair structure according to claim 1, wherein the repair pattern has a "[" shape.

7. The repair structure according to claim 1, wherein the repair pattern has an "I" shape.

8. The method according to claim 1, wherein the repair pattern is formed of metal.

9. A repair structure for a liquid crystal display having a substrate, comprising:

a data line on the substrate;

a scan line crossing the scan line and having first, second, and third segments, wherein the second segment is an electrically isolated from the first and third segments and located at a portion where the scan line and the data line overlap; and

a repair pattern electrically isolated from the second segment and electrically connecting the first segment with the third segment of the scan line.

10. The repair structure according to claim 9, wherein the repair pattern bypasses to pixel electrodes adjacent to the scan line and has a portion overlapping the pixel electrodes.

11. The repair structure according to claim 10, wherein a portion of the pixel electrodes overlapped the repair pattern is electrically isolated from other portion of the pixel electrodes.

12. The repair structure according to claim 9, wherein the repair pattern is formed along an upper portion of the scan line.

13. The repair structure according to claim 9, further comprising an insulating material formed between the first and second segments of the scan line and the second and third segments of the scan line.

14. The repair structure according to claim 9, wherein the repair pattern has a "[" shape.

15. The repair structure according to claim 9, wherein the repair pattern has an "I" shape.

16. The method according to claim 1, wherein the repair pattern is formed of metal.

17. A method of repairing a liquid crystal display having a plurality of scan lines and data lines which are arranged to cross each other, the method comprising the steps of:

electrically isolating a portion of the data lines that are short circuited with the scan lines where the data line and scan lines are overlapped, thereby forming first, second, and third segments of the data lines, wherein the isolated portion is the second segment;

forming contact holes over each of the first and third segments of the data lines; and

forming a repair pattern electrically connecting the first and third segments of the data lines through the contact holes, wherein the repair pattern is electrically isolated from the scan lines.

18. The method according to claim 17, wherein the step of electrically isolating a portion of the data lines is carried out by a laser.

19. The method according to claim 17, wherein the contact holes are formed by using a laser.

20. The method of claim 17, further comprising the step of forming an insulating material to fill portions between the first and second segments of the data lines and the second and third segments of the data lines.

21. The method of claim 17, wherein the repair pattern is formed by laser induced chemical vapor deposition.

22. A method of repairing a liquid crystal display having a plurality of scan lines and data lines which are arranged to cross each other, the method comprising the steps of:

electrically isolating a portion of the scan lines that are short circuited with the data lines where the data line and scan lines are overlapped, thereby forming first, second, and third segments of the scan lines, wherein the isolated portion is the second segment;

forming contact holes over each of the first and third segments of the scan lines; and

forming a repair pattern electrically connecting the first and third segments of the scan lines through the contact holes, wherein the repair pattern is electrically isolated from the data lines.

23. The method according to claim 22, wherein the step of electrically isolating a portion of the scan lines is carried out by a laser.

24. The method according to claim 22, wherein the contact holes are formed by using a laser.

25. The method of claim 22, further comprising the step of forming an insulating material to fill portions between the first and second segments of the scan lines and the second and third segments of the scan lines.

26. The method of claim 22, wherein the repair pattern is formed by laser induced chemical vapor deposition.

* * * * *

专利名称(译)	液晶显示器的修复结构及其修复方法		
公开(公告)号	US20010035920A1	公开(公告)日	2001-11-01
申请号	US09/843781	申请日	2001-04-30
[标]申请(专利权)人(译)	乐金显示有限公司		
申请(专利权)人(译)	LG.飞利浦液晶CO. , LTD.		
当前申请(专利权)人(译)	LG DISPLAY CO. , LTD.		
[标]发明人	CHOI WOO HYUK		
发明人	CHOI, WOO HYUK		
IPC分类号	G02F1/1362 G02F1/1333 G02F1/1343		
CPC分类号	G02F1/1362 G02F2001/136263		
优先权	1020000023332 2000-05-01 KR		
其他公开文献	US7471351		
外部链接	Espacenet USPTO		

摘要(译)

本发明公开了一种用于液晶显示器的修复结构及其修复方法，以修复由扫描线和数据线之间的短路引起的缺陷。更具体地，用于具有基板的液晶显示器的修复结构包括基板上的扫描线，与扫描线交叉并具有第一，第二和第三段的数据线，其中第二段与第一段电隔离第三区段位于扫描线和数据线重叠的部分，并且修复图案与第二区段电隔离并且将第一区段与数据线的第三区段电连接。

