



US007420642B2

(12) **United States Patent**
Lee

(10) **Patent No.:** **US 7,420,642 B2**
(45) **Date of Patent:** ***Sep. 2, 2008**

(54) **ARRAY SUBSTRATE FOR IN-PLANE SWITCHING MODE LIQUID CRYSTAL DISPLAY DEVICE**

(75) Inventor: **Yun Bok Lee**, Seoul (KR)

(73) Assignee: **LG Display Co., LCD**, Seoul (KR)

(*) Notice: Subject to any disclaimer, the term of this patent is extended or adjusted under 35 U.S.C. 154(b) by 144 days.

This patent is subject to a terminal disclaimer.

5,144,288 A	9/1992	Hamada et al.	
5,434,687 A	7/1995	Kawata et al.	
5,610,743 A	3/1997	Tsai	
5,929,958 A *	7/1999	Ohta et al.	349/141
5,956,111 A *	9/1999	Ohta et al.	349/141
5,977,562 A	11/1999	Hirakata et al.	257/72
6,243,154 B1	6/2001	You et al.	
6,307,216 B1	10/2001	Huh et al.	
6,621,102 B2	9/2003	Hirakata et al.	257/72
6,897,930 B2	5/2005	Nakayoshi et al.	
2003/0053020 A1	3/2003	Okada et al.	
2005/0083466 A1	4/2005	Lee et al.	349/141

(Continued)

FOREIGN PATENT DOCUMENTS

GB 2311905 10/1997

(Continued)

Primary Examiner—James A Dudek
(74) *Attorney, Agent, or Firm*—McKenna, Long & Aldridge LLP

(21) Appl. No.: **11/303,952**

(22) Filed: **Dec. 19, 2005**

(65) **Prior Publication Data**

US 2006/0139546 A1 Jun. 29, 2006

Related U.S. Application Data

(62) Division of application No. 10/825,433, filed on Apr. 16, 2004, now Pat. No. 7,002,656.

(30) **Foreign Application Priority Data**

Dec. 11, 2003 (KR) 10-2003-0090414

(51) **Int. Cl.**
G02F 1/1343 (2006.01)

(52) **U.S. Cl.** **349/141**

(58) **Field of Classification Search** 349/141
See application file for complete search history.

(56) **References Cited**

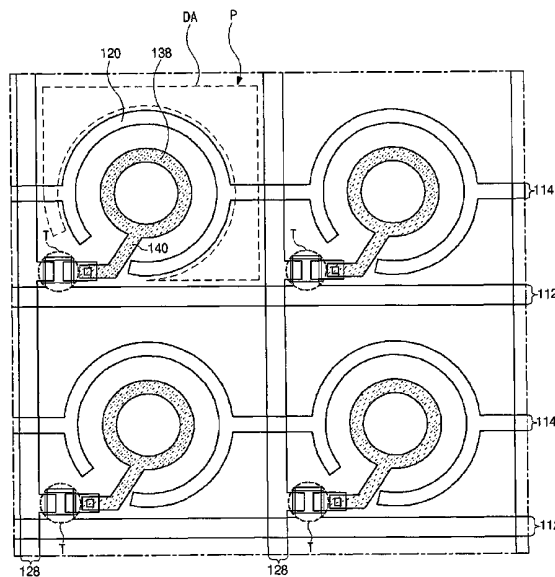
U.S. PATENT DOCUMENTS

5,069,813 A 12/1991 Patel

(57) **ABSTRACT**

An array substrate for use in an in-plane switching liquid crystal display device includes a plurality of gate lines disposed in a first direction on a substrate; a plurality of data lines disposed in a second direction aslant the gate lines, wherein the gate and data lines have rounded portions and pairs of the gate and data lines define circular pixel regions; a common line disposed in the first direction between the pair of the gate lines; a circular common electrode connected to the common line; a thin film transistor disposed near each crossing of the gate and data lines; and a circular pixel electrode disposed in the circular pixel region, connected to the thin film transistor, and spaced apart from the circular common electrode.

7 Claims, 8 Drawing Sheets



U.S. PATENT DOCUMENTS

2005/0083468	A1	4/2005	Chen et al.	349/141
2005/0105033	A1	5/2005	Itou et al.	349/141
2005/0117102	A1	6/2005	Park et al.	349/141
2005/0128401	A1*	6/2005	Lee	349/139
2005/0128402	A1	6/2005	Lee	349/139
2005/0128404	A1	6/2005	Lee	349/141
2005/0128405	A1	6/2005	Lee	349/141
2005/0128406	A1*	6/2005	Lee	349/141
2005/0128407	A1	6/2005	Lee et al.	349/141
2005/0128408	A1*	6/2005	Lee	349/141
2005/0128409	A1*	6/2005	Lee	349/141
2005/0140896	A1*	6/2005	Chae et al.	349/141
2005/0206822	A1*	9/2005	Lee	349/141
2007/0109480	A1*	5/2007	Lee	349/141

2007/0146607	A1*	6/2007	Lee et al.	349/141
2007/0165171	A1*	7/2007	Lee	349/139

FOREIGN PATENT DOCUMENTS

JP	06-342156	12/1994
JP	09-061812	3/1997
JP	09-325340	12/1997
JP	10-062802	3/1998
JP	2001-154214	6/2001
JP	2002-055357	2/2002
JP	2002-229046	8/2002
JP	2003-167271	6/2003
KR	1999-0058889	7/1999

* cited by examiner

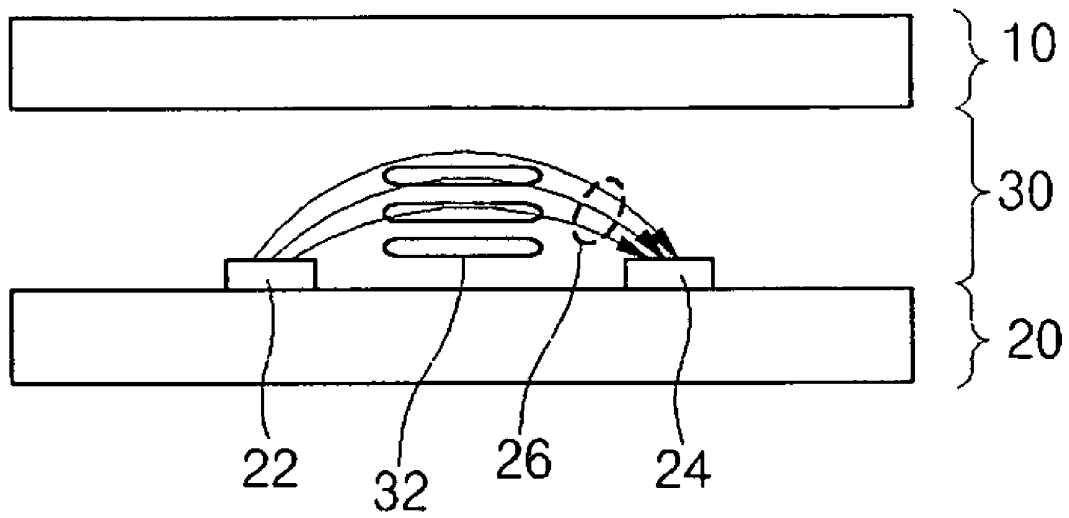


FIG. 1

(RELATED ART)

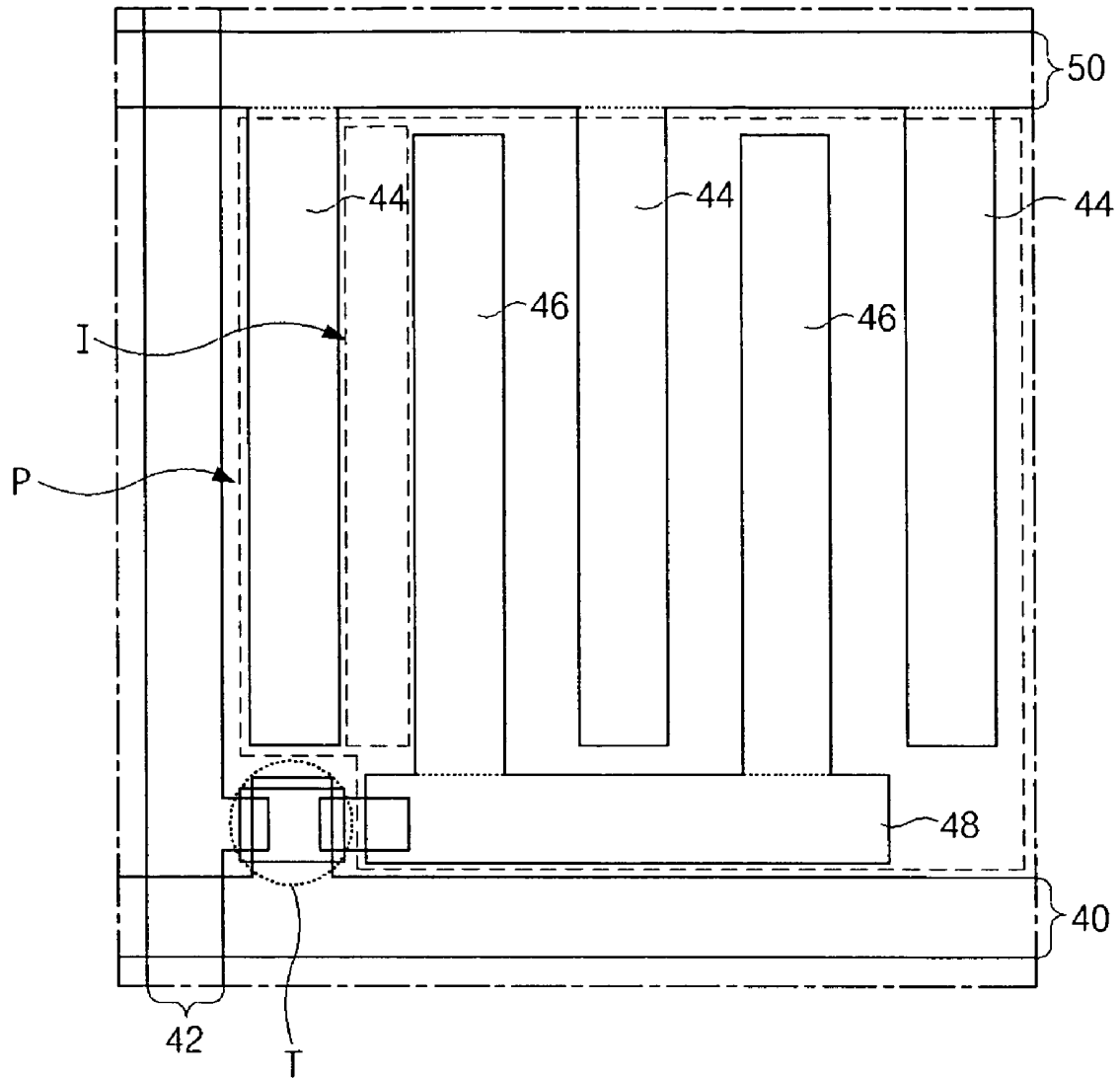


FIG. 2
(RELATED ART)

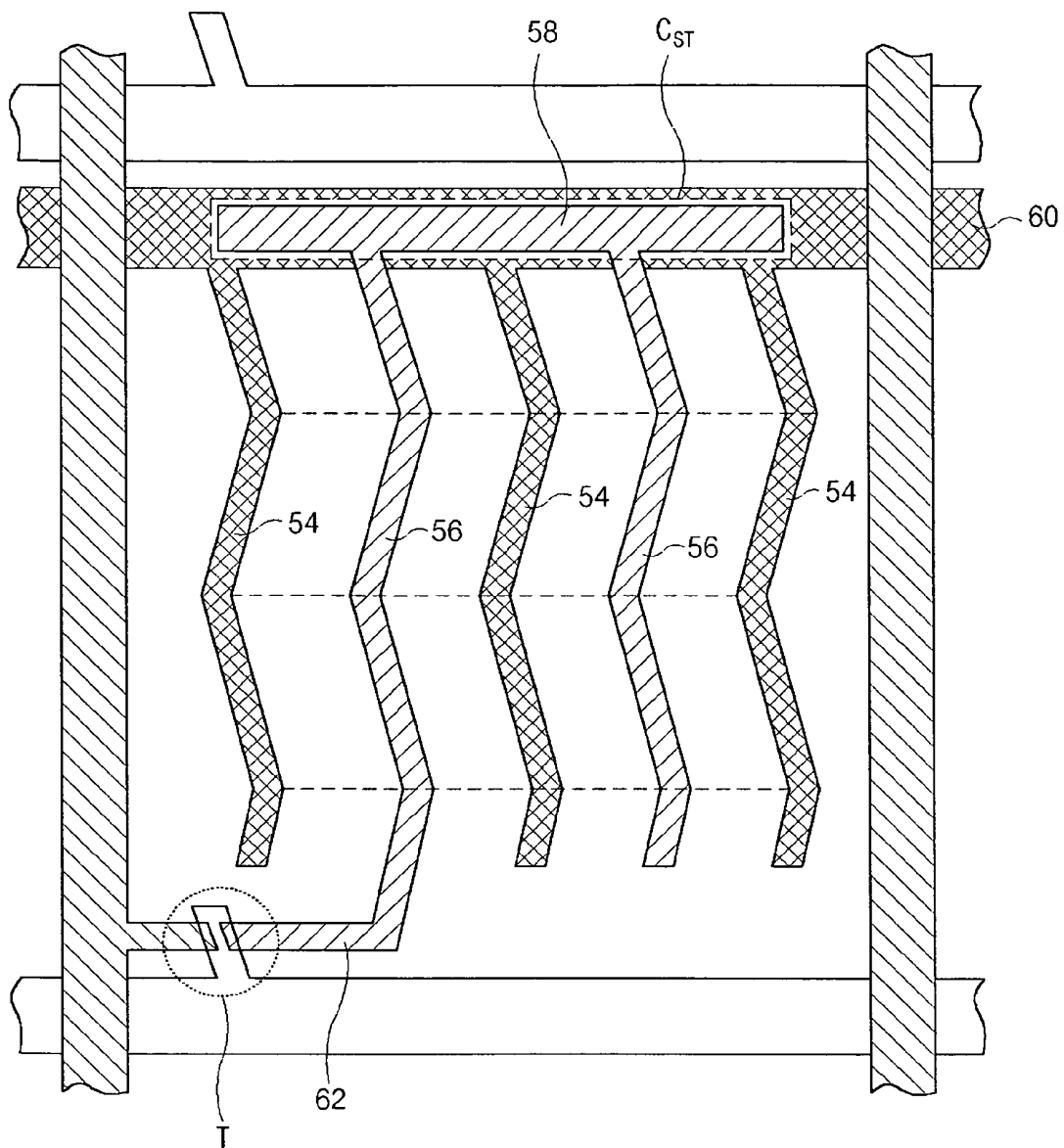


FIG. 3

(RELATED ART)

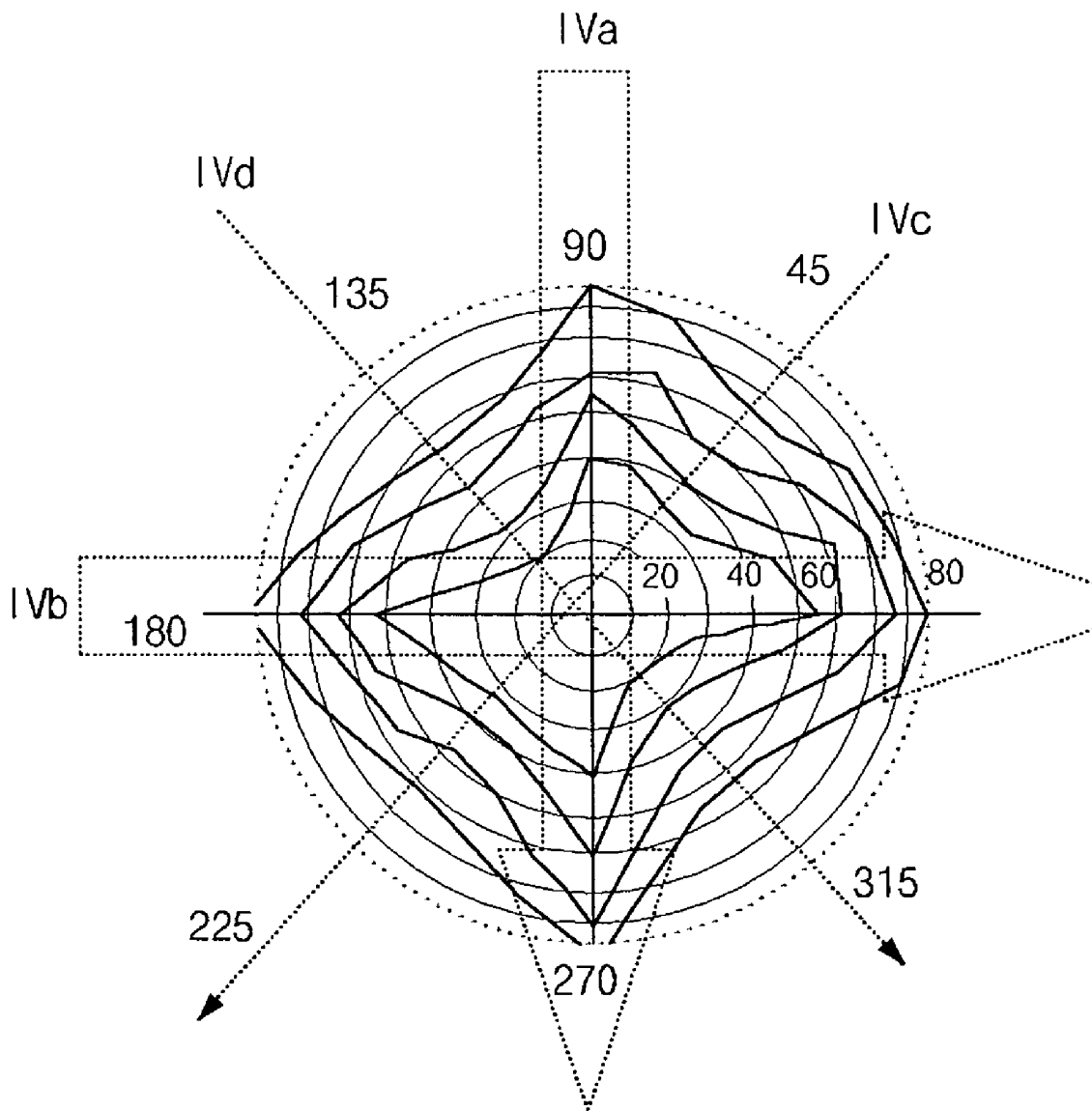


FIG. 4

(RELATED ART)

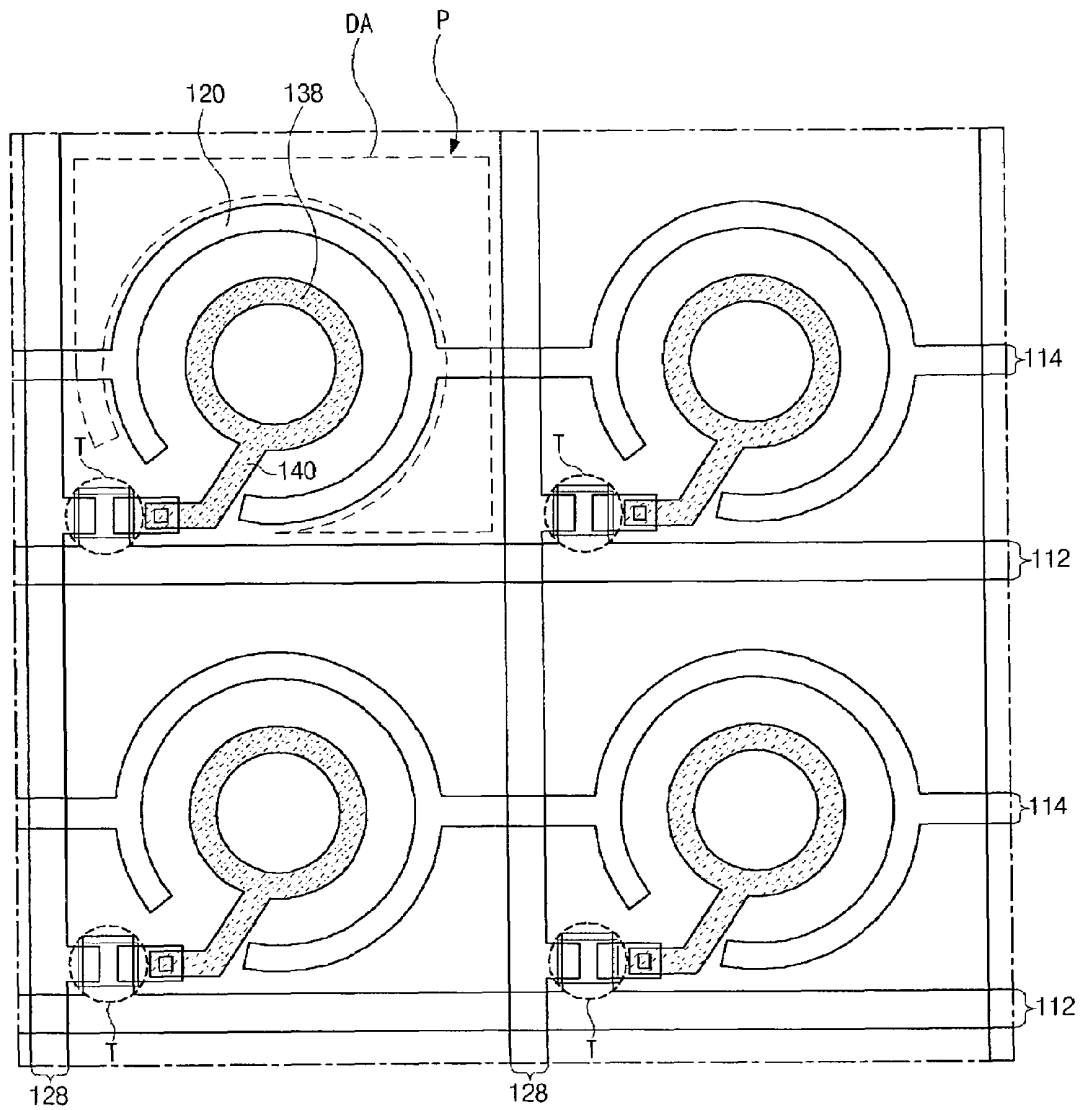


FIG. 5

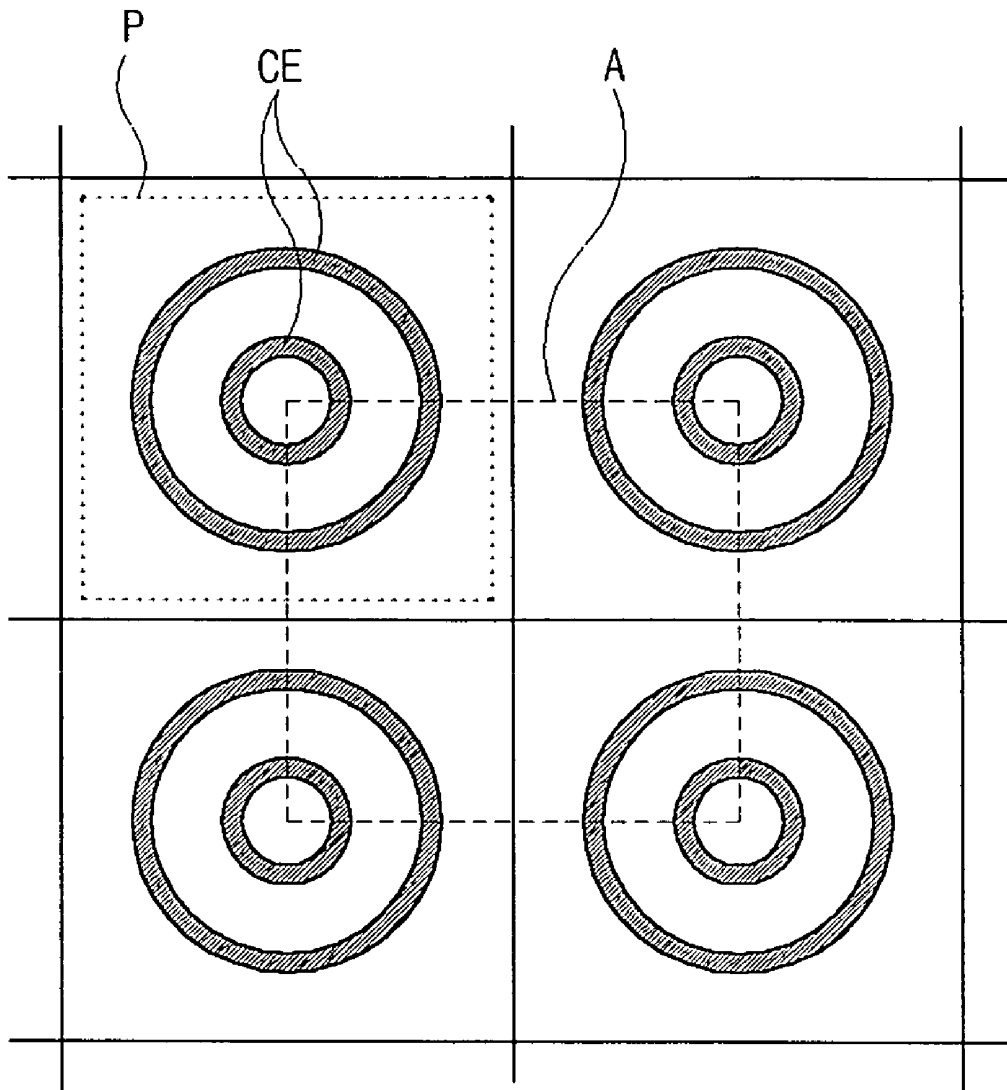


FIG. 6A

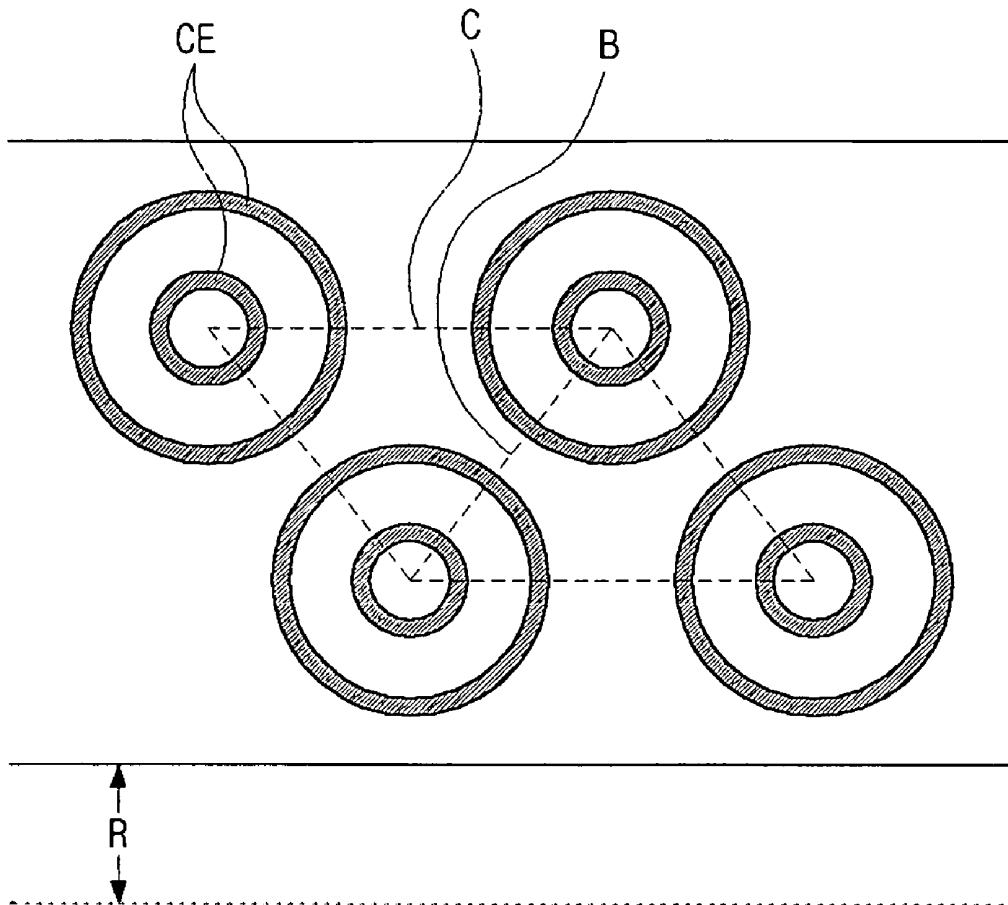


FIG. 6B

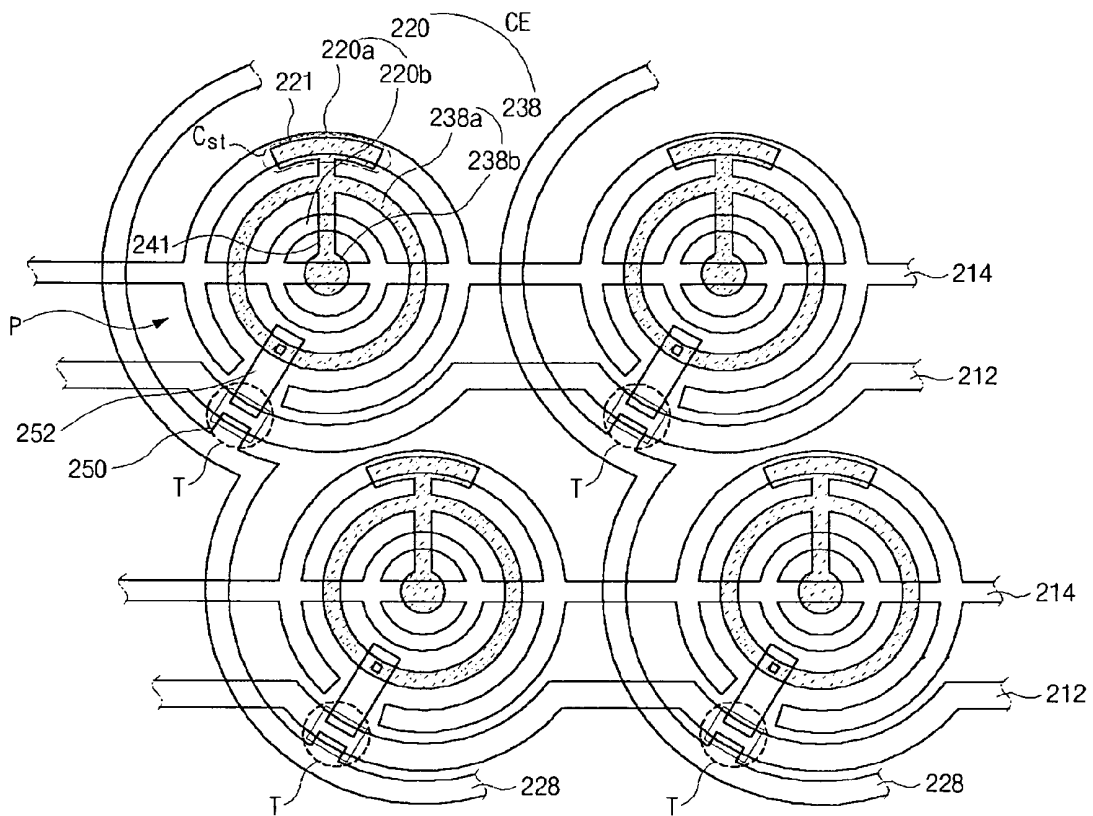


FIG. 7

ARRAY SUBSTRATE FOR IN-PLANE SWITCHING MODE LIQUID CRYSTAL DISPLAY DEVICE

This application is a Divisional of application Ser. No. 10/825,433 filed Apr. 16, 2004 now U.S. Pat. No. 7,002,656, which is hereby incorporated by reference as if fully set forth herein. This application claims the benefit of Korean Patent Application No. 2003-0090414, filed on Dec. 11, 2003, which is hereby incorporated by reference as if fully set forth herein.

BACKGROUND OF THE INVENTION

1. Field of the Invention

The present invention relates to liquid crystal display devices. More particularly it relates to liquid crystal display devices implementing in-plane switching (IPS) where an electric field to be applied to liquid crystals is generated in a plane parallel to a substrate.

2. Discussion of the Related Art

A liquid crystal display device uses the optical anisotropy and polarization properties of liquid crystal molecules to produce an image. Liquid crystal molecules have a definite orientational alignment as a result of their long, thin shapes. That alignment direction can be controlled by an applied electric field. In other words, as an applied electric field changes, so does the alignment of the liquid crystal molecules. Due to the optical anisotropy, the refraction of incident light depends on the alignment direction of the liquid crystal molecules. Thus, by properly controlling an applied electric field, a desired light image can be produced.

Of the different types of known liquid crystal displays (LCDs), active matrix LCDs (AM-LCDs), which have thin film transistors (TFTs) and pixel electrodes arranged in a matrix form, are the subject of significant research and development because of their high resolution and superiority in displaying moving images.

LCD devices have wide application in office automation (OA) equipment and video units because they are light, thin and have low power consumption characteristics. The typical liquid crystal display panel has an upper substrate, a lower substrate and a liquid crystal layer interposed there between. The upper substrate, commonly referred to as a color filter substrate, usually includes a common electrode and color filters. The lower substrate, commonly referred to as an array substrate, includes switching elements, such as thin film transistors and pixel electrodes.

As previously described, LCD device operation is based on the principle that the alignment direction of the liquid crystal molecules is dependent upon an electric field applied between the common electrode and the pixel electrode. Thus, the alignment direction of the liquid crystal molecules is controlled by the application of an electric field to the liquid crystal layer. When the alignment direction of the liquid crystal molecules is properly adjusted, incident light is refracted along the alignment direction to display image data. The liquid crystal molecules function as an optical modulation element having variable optical characteristics that depend upon polarity of the applied voltage.

In a conventional LCD device, since the pixel and common electrodes are positioned on the lower and upper substrates, respectively, the electric field induced between them is perpendicular to the lower and upper substrates. However, the conventional LCD devices having the longitudinal electric field have a drawback in that they have a very narrow viewing angle. In order to solve the problem of narrow viewing angle,

in-plane switching liquid crystal display (IPS-LCD) devices have been proposed. The IPS-LCD devices typically include a lower substrate where a pixel electrode and a common electrode are disposed, an upper substrate having no electrode, and a liquid crystal interposed between the upper and lower substrates. A detailed explanation about operation modes of a typical IPS-LCD panel will be provided referring to FIG. 1.

FIG. 1 is a schematic cross-sectional view illustrating a concept of a related art IPS-LCD panel. As shown in FIG. 1, upper and lower substrates **10** and **20** are spaced apart from each other, and a liquid crystal layer **30** is interposed there between. The upper and lower substrates **10** and **20** are often referred to as an array substrate and a color filter substrate, respectively. On the lower substrate **20** are a common electrode **22** and a pixel electrode **24**. The common and pixel electrodes **22** and **24** are aligned parallel to each other. On a surface of the upper substrate **10**, a color filter layer (not shown) is commonly positioned in a position between the pixel electrode **24** and the common electrode **22** of the lower substrate **20**. A voltage applied to the common and pixel electrodes **22** and **24** produces an electric field **26** through the liquid crystal **32**. The liquid crystal **32** has a positive dielectric anisotropy, and thus it aligns parallel to the electric field **26**.

Now the description will illustrate the operation of a related art IPS-LCD device. When no electric field is produced by the common and pixel electrodes **22** and **24**, i.e., the off state, the longitudinal axes of the liquid crystal (LC) molecules **32** are parallel and form a definite angle with the common and pixel electrodes **22** and **24**. For example, the longitudinal axes of the LC molecules **32** are arranged parallel with both the common and pixel electrodes **22** and **24**.

On the contrary, when a voltage is applied to the common and pixel electrodes **22** and **24**, i.e., the on state, an in-plane electric field **26** that is parallel to the surface of the lower substrate **20** is produced because the common and pixel electrodes **22** and **24** are on the lower substrate **20**. Accordingly, the LC molecules **32** are re-arranged to bring their longitudinal axes into coincidence with the electric field **26**.

Therefore, the result is a wide viewing angle that ranges from about 80 to 85 degrees in up-and-down and left-and-right sides from a line vertical to the IPS-LCD panel, for example.

FIG. 2 is a plan view illustrating one pixel of an array substrate according to a related art IPS-LCD device. As shown, gate lines **40** are transversely arranged and data lines **42** are disposed substantially perpendicular to the gate lines **40**. A common line **50** is also transversely arranged parallel with the gate line **40** and is spaced apart from the gate line **40**. The gate line **40**, the common line **50** and a pair of the data lines **42** define a pixel region P on the array substrate. A thin film transistor (TFT) is disposed a corner of the pixel region P near the crossing of the gate and data lines **40** and **42**.

In each one pixel P, three common electrodes **44** extend perpendicularly from the common line **50**, and two of the common electrodes **44** are disposed next to the data lines **42**, respectively. A pixel connecting line **48** is disposed next to the gate line **40** with being parallel with the gate line **40**, and is electrically connected to the TFT T. Pixel electrodes **46** extend perpendicularly from the pixel connecting line **48** toward the common line **50**. Each of the pixel electrodes **46** is disposed between two of the common electrodes **44** parallel with the data line **42**. Each of areas "I" between the respective common electrodes **44** and the respective pixel electrodes **46** is defined as a block where the liquid crystal molecules are

rearranged by the electric fields generated between the common and pixel electrodes 44 and 46. In FIG. 2, there are four blocks in one pixel.

As shown in FIG. 2, the IPS-LCD device according to the related art rearranges and operates the liquid crystal molecules using the electric field generated parallel with the array substrate. Thus, it can provide a wider viewing angle than the LCD device forming the electric field perpendicular to the array substrate. Some further modifications have been developed in the IPS-LCD device in order to further increase the viewing angle.

FIG. 3 is a plan view of an array substrate for use in an IPS-LCD device having multiple domains according to another related art. With reference to FIG. 3, some of detailed explanations, especially previously explained with reference to FIG. 2, will be omitted in order to prevent duplicate explanations.

In FIG. 3, a pixel connecting line 58 is disposed over a common line 60. Common and pixel electrodes 54 and 56 are elongated from the common and pixel connecting lines 60 and 58, respectively, in an up-and-down direction. Both the common and pixel electrodes 54 and 56 have a zigzag shape with plural bent portions, and they are parallel to each other and arranged alternately. The zigzag shape defines the multidomains in the pixel regions which are symmetrical to the bent portions of the common and pixel electrodes 54 and 56. These zigzag shaped structures and the multidomains improve the viewing angle further than the straight shape of FIG. 2.

Moreover in FIG. 3 the pixel connecting line 58 overlaps the common line 60 so that an overlapped area becomes a storage capacitor CST. Namely, the pixel connecting line 58 acts as one electrode of the storage capacitor CST, while the overlapped portion of the common line 60 acts as the other electrode of the storage capacitor CST. One of the pixel electrodes 56 is connected to a drain electrode 62 so that all of the pixel electrodes 56 can electrically communicate with the TFT.

However, the IPS-LCD device having the above-mentioned multidomains has a problem in that colors shift depending on the viewing angles, due to the liquid crystal molecules have long and thin shapes.

FIG. 4 is a graph illustrating viewing angle properties of the IPS-LCD device having the zigzag structure of FIG. 3. The IPS-LCD device having the zigzag-shaped common and pixel electrodes can have the improved viewing angles in directions of ± 90 and ± 180 degrees, i.e., in right-and-left and up-and-down directions, as illustrated by references "IVa" and "IVb" in FIG. 4. However, the viewing angles are degraded in directions of ± 45 and ± 135 degrees, i.e., in diagonal directions, as illustrated by references "IVc" and "IVd" in FIG. 4. Furthermore, color shift also occurs depending on the viewing angles or directions.

When the voltages applied to the electrodes generate the electric fields between the common and pixel electrodes, the liquid crystal molecules rotate about degrees in accordance with the electric fields. Gray inversion occurs due to the rotation of the liquid crystal molecules. In particular, when the IPS-LCD is operated in gray mode, the IPS-LCD produces yellowish color in 45(+45) degrees declination with respect to the liquid crystal polarization because of the optical anisotropy properties of liquid crystal molecules. And the IPS-LCD also produces bluish color in 135(-45) degrees declination with respect to the liquid crystal polarization because of the optical anisotropy properties of the liquid crystal molecules.

SUMMARY OF THE INVENTION

Accordingly, the present invention is directed to an array substrate for an IPS-LCD device that substantially obviates one or more of the problems due to limitations and disadvantages of the related art.

An advantage of the present invention is to provide an array substrate for use in an IPS-LCD device, which increases a viewing angle and prevents a color shift.

Another advantage of the present invention is to provide an array substrate for use in an IPS-LCD device, which maintains uniform direction of liquid crystal molecules in all directions.

Another advantage of the present invention is to provide an array substrate for use in an IPS-LCD device, which increases an aperture area in a pixel region.

Additional features and advantages of the invention will be set forth in the description which follows and in part will be apparent from the description, or may be learned by practice of the invention. These and other advantages of the invention will be realized and attained by the structure particularly pointed out in the written description and claims hereof as well as the appended drawings.

To achieve these and other advantages, an embodiment in accordance with the principles of the present invention provides an array substrate for use in an in-plane switching liquid crystal display device. The array substrate includes a plurality of gate lines disposed in a first direction on a substrate; a plurality of data lines disposed in a second direction aslant the gate lines, wherein the gate and data lines have rounded portions and pairs of the gate and data lines define circular pixel regions; a common line disposed in the first direction between the pair of the gate lines; a circular common electrode connected to the common line; a thin film transistor disposed near each crossing of the gate and data lines; and a circular pixel electrode disposed in the circular pixel region, connected to the thin film transistor, and spaced apart from the circular common electrode.

In another aspect, an array substrate for use in an in-plane switching liquid crystal display device includes a plurality of gate lines disposed in a first direction on a substrate; a plurality of data lines disposed in a second direction perpendicular to the gate lines, wherein the gate and data lines have a straight line shape and pairs of the gate and data lines define a rectangular pixel regions; a circular common electrode disposed in each rectangular pixel region; a common line disposed to the first direction, the common line connecting the circular common electrode to the neighboring circular common electrode disposed in the neighboring rectangular pixel region; a circular pixel electrode disposed inside the circular common electrode with being spaced apart from the circular common electrode; a thin film transistor disposed near a crossing of the gate and data lines in the rectangular pixel region; and a pixel connecting line connecting the circular pixel electrode to the thin film transistor.

It is to be understood that both the foregoing general description and the following detailed description are exemplary and explanatory and are intended to provide further explanation of the invention as claimed.

BRIEF DESCRIPTION OF THE DRAWINGS

The accompanying drawings, which are included to provide a further understanding of the invention and are incorporated in and constitute a part of this specification, illustrate an embodiment of the present invention and together with the description serve to explain the principles of that invention.

In the drawings:

FIG. 1 is a schematic cross-sectional view illustrating a concept of a related art IPS-LCD panel;

FIG. 2 is a plan view illustrating one pixel of an array substrate according to a related art IPS-LCD device;

FIG. 3 is a plan view illustrating an array substrate for use in an IPS-LCD device having multiple domains according to another related art;

FIG. 4 is a graph illustrating a viewing angle of the IPS-LCD device having the zigzag structure of FIG. 3;

FIG. 5 is a plan view illustrating an array substrate for use in an IPS-LCD device according to a first embodiment of the present invention;

FIGS. 6A and 6B are conceptual illustrations illustrating an exemplary pixel arrangement of the IPS-LCD device having circular common and pixel electrodes according to the present invention; and

FIG. 7 is a plan view illustrating an array substrate for use in an IPS-LCD device according to a second embodiment of the present invention.

DETAILED DESCRIPTION OF THE ILLUSTRATED EMBODIMENTS

Reference will now be made in detail to an illustrated embodiment of the present invention, examples of which are shown in the accompanying drawings. Wherever possible, similar reference numbers will be used throughout the drawings to refer to the same or similar parts.

FIG. 5 is a plan view illustrating an array substrate for use in an IPS-LCD device according to a first exemplary embodiment of the present invention. In the present invention, the common and pixel electrodes have a substantially circular shape.

As shown in FIG. 5, gate lines 112 are transversely arranged and data lines 128 are disposed substantially perpendicular to the gate lines 112. Pairs of gate and data lines 112 and 128 define regions P on the array substrate. A thin film transistor (TFT) T is disposed near each crossing of the gate and data lines 112 and 128 such that each pixel P includes one TFT T. Namely, each of the pixels P has the TFT at a bottom left corner thereof. The gate and data lines 112 and 128 act as borders of neighboring pixels P.

In the pixel region, a substantially circular common electrode 120 having a substantially circular band shape is disposed. The circular common electrode 120 in one pixel P is connected to the neighboring circular common electrode disposed in the neighboring pixel. Namely, a common line 114 substantially perpendicularly crosses the data line 128 and connects the neighboring circular common electrodes 120. A circular pixel electrode 138 is disposed inside the circular common electrode 120 and spaced apart from the circular common electrode 120. The pixel electrode 138 also has a circular band shape and is connected to the TFT T through a pixel connecting line 140. Namely, the pixel connecting line 140 extends from a side of the circular pixel electrode 138 and contacts the TFT to transfer the electric signals from the TFT T to the pixel electrode 138.

An aperture area defined between the circular common and pixel electrodes 120 and 138 also has a circular band shape such that the liquid crystals located in such aperture area have the liquid crystal directors that are constant in all directions. Therefore, a color shift is prevented and an image quality increases in the IPS-LCD device. Additionally, although FIG. 5 shows only one common electrode and one pixel electrode in the pixel region P, plural common and pixel electrodes are possible so as to form multi domains within one pixel region P.

The array substrate depicted in FIG. 5 shows the gate and data lines 112 and 128 shaped like straight lines, and each of the pixel regions P defined by the gate and data lines 112 and 128 is shaped like a rectangle, for example, as being a box type. And circular common and pixel electrodes 120 and 138

are formed inside the rectangular pixel region P. Therefore, dummy areas DA, which do not function as the aperture area, exist in the pixel region P because of the profile differences between the rectangular pixel region P and the circular common and pixel electrodes 120 and 138. Those dummy areas DA cause the decrease of the aperture ration in the IPS-LCD device. To overcome this disadvantage, some modifications are developed as illustrated in FIG. 7.

FIGS. 6A and 6B are conceptual illustrations showing exemplary pixel arrangements of the IPS-LCD device having circular common and pixel electrodes according to the present invention.

In FIG. 6A, each pixel region P has a rectangular shape and the circular common and pixel electrodes CE are disposed inside the rectangular pixel region P. Furthermore, if lines are drawn to connect the centers of the circular common and pixel electrodes CE, four pixel regions P form a rectangle A. This configuration can be referred to as a stripe structure because the pixel regions P are disposed parallel side-by-side along-side vertical or horizontal lines.

FIG. 6B shows a pixel arrangement modified from FIG. 6A. As compared to FIG. 6A, the pixel region of FIG. 6B is not shaped like a rectangle, but the common and pixel electrodes CE have a substantially circular shape and are disposed in the center of the pixel regions as like those of FIG. 6A. If lines are drawn to connect the centers of neighboring three pixel regions, a triangle B is accomplished. Further, if lines are drawn to connect the centers of neighboring four pixel regions, a parallelogram C is accomplished. This configuration forming the triangle or the parallelogram can be referred to as a delta structure or a parallelogram structure because of the above-mentioned profiles. The delta structure of FIG. 6B can reduce the intervals among the circular common and pixel electrodes CE, thereby reducing the dummy area as much as a residual area R in comparison with the stripe structure depicted in FIG. 6A. This means that the delta structure increases the aperture ratio relative to the stripe structure.

FIG. 7 is a plan view illustrating an array substrate for use in an IPS-LCD device according to a second exemplary embodiment of the present invention. In this second embodiment, the aforementioned delta structure is utilized in order to minimize the dummy area that does not function to display images.

Common lines 214 are transversely disposed on a substrate with being spaced apart from each other. Gate lines 212 are disposed in a row direction on the substrate while running from left to right in the context of the figure alongside the common lines 214. Data lines 228 are disposed in a column direction aslant the gate line 212. Pairs of the gate and data lines 212 and 228 define a pixel regions P. The gate and data lines 212 and 228 are curved in each pixel region P such that they are circuitous around the pixel regions P. Namely, the pixel regions P of the second embodiment are shaped like a circle unlike the first embodiment illustrated in FIG. 5 because the gate and data lines 212 and 228 are formed to be rounded around the pixel regions P.

Near each crossing of the gate and data lines 212 and 228, a thin film transistor (TFT) T is disposed. The TFT T includes a source electrode 250 and a drain electrode 252. The source electrode 250 extends from the data line 228 over a portion of the gate line 212. The drain electrode 252 is spaced apart from the source electrode 250, overlaps a portion to the gate line 212, and extends into the pixel region P.

Within each pixel region P, a circular common electrode 220 and a circular pixel electrode 238 are disposed. The circular common electrode 220 includes a first circular common electrode pattern 220a and a second circular common electrode pattern 220b both of which extend from and are connected to the common line 214. The common line 214 passes along a diameter of the first and second circular com-

mon electrode patterns **220a** and **220b** such that the common line **214** divides the first and second circular common electrode patterns **220a** and **220b** into two semicircular portions, respectively. The first circular common electrode pattern **220a** is larger than the second circular common electrode pattern **220b** such that the second circular common electrode pattern **220b** is disposed inside the first circular common electrode pattern **220a**. Meanwhile, the first circular common electrode pattern **220a** has an opening in order to prevent the intersection with the drain electrode **252**.

The circular pixel electrode **238** is comprised of first and second circular pixel electrode patterns **238a** and **238b**. The first circular pixel electrode pattern **238a** is shaped like a circular band and is disposed between the first and second circular common electrode patterns **220a** and **220b**. The second circular pixel electrode pattern **238b** is disposed inside the second circular common electrode pattern **220b**. A pixel connecting line **241** connects the first and second circular pixel electrode patterns **238a** and **238b**, and extends over a portion of the first circular common electrode pattern **220a**.

Meanwhile, a capacitor electrode **221** is disposed over a portion of the first circular common electrode pattern **220a** and is connected to the pixel connecting line **241**. The capacitor electrode **221** and the overlapped portion of the first circular common electrode pattern **220a** constitute a storage capacitor Cst with an interposed dielectric layer (not shown). The capacitor electrode **221** acts as a first electrode of the storage capacitor Cst, and the overlapped portion of the first circular common electrode pattern **220a** acts as a second electrode of the storage capacitor Cst. Although FIG. 7 shows that the capacitor electrode **221** is disposed over the first circular common electrode pattern **220a**, the capacitor electrode **221** maybe disposed over the previous gate line **212** disposed for the previous pixel regions P. The first circular pixel electrode pattern **238a** is connected to the drain electrode **252** such that it receives data signals from the data line **228** via the TFT T.

In the pixel region P shown in FIG. 7, the aperture areas between the electrode patterns are shaped like circles because the common and pixel electrode patterns **220a**, **220b**, **228a** and **228b** have the circular shapes. Furthermore, since the gate and data lines **212** and **228** have found portions corresponding to the circular common and pixel electrodes **220** and **228**, the pixel regions P also have the circular shape.

According to the second embodiment of FIG. 7, the pixel regions P have the formation of the delta structure or the parallelogram structure as illustrated with reference to FIG. 6B. Namely, the pixel regions are distributed parallel from left to right in the context of the figure, but obliquely from top and bottom in the context of the figure. When drawing the lines to connect the centers of the three pixel regions P, the lines form like a letter delta (Δ), i.e., the delta structure. Also, when drawing the lines to connect the centers of the four pixel regions P, the lines form a parallelogram, hence the parallelogram structure. The circular pixel regions and the delta or parallelogram structure can reduce the dummy area as compared to with the stripe structure of FIG. 5, because the circular pixel regions P are closely located to each other. Therefore, the aperture ratio can increase.

Further embodiments are contemplated by the present invention in which pixels, pixel electrodes, and common electrodes have a polygonal shape rather than a circular band shape. For example, pixels may have the shape of polygons having five or more sides. It is understood that as the number of sides in the regular or equilateral polygon increases, the polygonal shape approaches a substantially circular shape.

Accordingly in the present invention, it is possible to obtain a wider viewing angle due to the circular-common and pixel electrodes. The color shift is also prevented, and the contrast and resolution of the IPS-LCD increases due to the fact that the liquid crystal directors are all uniform in all directions. Furthermore, since the dummy area is reduced when the pixel regions are rounded and the delta or parallelogram structure is utilized, the aperture ratio increases.

It will be apparent to those skilled in the art that various modifications and variation can be made in the array substrate of the present invention without departing from the spirit or scope of the invention. Thus, it is intended that the present invention cover the modifications and variations of this invention provided they come within the scope of the appended claims and their equivalents.

What is claimed is:

1. An array substrate for use in an in-plane switching liquid crystal display device, comprising:

a plurality of gate lines disposed in a first direction on a substrate;

a plurality of data lines disposed in a second direction perpendicular to the gate lines, wherein the gate and data lines have a straight line shape and pairs of the gate and data lines define a rectangular pixel regions;

a circular common electrode disposed in each rectangular pixel region;

a common line disposed to the first direction, the common line connecting the circular common electrode to the neighboring circular common electrode disposed in the neighboring rectangular pixel region;

a circular pixel electrode disposed inside the circular common electrode with being spaced apart from the circular common electrode;

a thin film transistor disposed near a crossing of the gate and data lines in the rectangular pixel region; and

a pixel connecting line connecting the circular pixel electrode to the thin film transistor,

wherein the thin film transistor is disposed at a corner of the pixel region and wherein the distance between the common line and two adjacent gate lines is substantially the same.

2. The array substrate of claim 1, wherein the circular pixel electrode has a circular band shape.

3. The array substrate of claim 1, wherein the circular common electrode has an open corresponding in position to the thin film transistor, and the pixel connecting line passes through the open.

4. The array substrate of claim 1, wherein the pixel connecting line does not cross the rectangular pixel region but cross over the gate line.

5. The array substrate of claim 1, wherein the circular common and pixel electrodes constitute a circular aperture area.

6. The array substrate of claim 1, wherein the pixel regions have a formation of straight structure where the pixel regions are distributed parallel both from left to right and from top and bottom.

7. The liquid crystal display device of claim 1, wherein first and second adjacent pixels in a first row and a third pixel adjacent to said first and second pixels in a second row form a delta structure, each of three vertices of the delta structure being a center of the first, second and third pixels, respectively.

* * * * *

专利名称(译)	用于面内切换模式液晶显示装置的阵列基板		
公开(公告)号	US7420642	公开(公告)日	2008-09-02
申请号	US11/303952	申请日	2005-12-19
[标]申请(专利权)人(译)	李润乙		
申请(专利权)人(译)	李润乙		
当前申请(专利权)人(译)	LG DISPLAY CO. , LTD.		
[标]发明人	LEE YUN BOK		
发明人	LEE, YUN BOK		
IPC分类号	G02F1/1343 G02F1/136 G02F1/1362 G02F1/1368 G09F9/35 H01L29/786		
CPC分类号	G02F1/134336 G02F1/134363 G02F2201/123 G02F2201/122 G02F1/1362		
优先权	1020030090414 2003-12-11 KR		
其他公开文献	US20060139546A1		
外部链接	Espacenet USPTO		

摘要(译)

一种用于面内切换液晶显示装置的阵列基板，包括在基板上沿第一方向设置的多条栅极线；沿栅极线设置在第二方向上的多条数据线，其中栅极线和数据线具有圆形部分，栅极线和数据线对限定圆形像素区域；在所述一对栅极线之间沿第一方向设置的公共线；圆形公共电极连接到公共线；薄膜晶体管设置在栅极线和数据线的每个交叉点附近；圆形像素电极，设置在圆形像素区域中，连接到薄膜晶体管，并与圆形公共电极间隔开。

