



US007599037B2

(12) **United States Patent**
Song et al.

(10) **Patent No.:** **US 7,599,037 B2**
(45) **Date of Patent:** **Oct. 6, 2009**

(54) **THIN FILM TRANSISTOR ARRAY PANEL FOR LIQUID CRYSTAL DISPLAY AND METHOD FOR MANUFACTURING THE SAME**

6,313,898 B1 * 11/2001 Numano et al. 349/129
6,392,720 B1 * 5/2002 Kim 349/42
6,404,473 B1 * 6/2002 Kaneko et al. 349/139

(75) Inventors: **Jean-Ho Song**, Pyengtaek (KR);
Chang-Oh Jeong, Suwon (KR)

(Continued)

(73) Assignee: **Samsung Electronics Co., Ltd.**,
Suwon-Si (KR)

FOREIGN PATENT DOCUMENTS

JP 03-260631 11/1991

(*) Notice: Subject to any disclaimer, the term of this patent is extended or adjusted under 35 U.S.C. 154(b) by 0 days.

(Continued)

(21) Appl. No.: **10/895,866**

Primary Examiner—Richard H Kim

(22) Filed: **Jul. 21, 2004**

(74) *Attorney, Agent, or Firm*—F. Chau & Associates, LLC

(65) **Prior Publication Data**

(57) **ABSTRACT**

US 2005/0041187 A1 Feb. 24, 2005

Related U.S. Application Data

(62) Division of application No. 10/112,890, filed on Apr. 1, 2002, now Pat. No. 6,905,917.

(30) **Foreign Application Priority Data**

Aug. 20, 2001 (KR) 2001-49963

(51) **Int. Cl.**

G02F 1/1343 (2006.01)

(52) **U.S. Cl.** **349/147**; 349/139; 349/43; 349/39

(58) **Field of Classification Search** 349/43, 349/38, 39, 147; 438/30

See application file for complete search history.

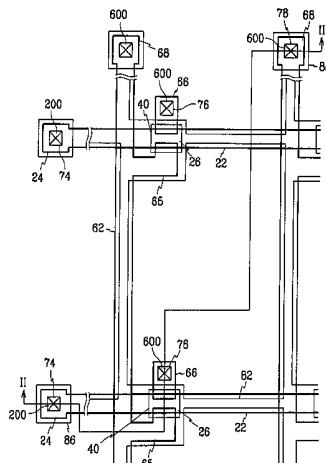
(56) **References Cited**

U.S. PATENT DOCUMENTS

5,376,187 A * 12/1994 Strickland et al. 148/212
5,994,156 A * 11/1999 Voutsas et al. 438/30
6,043,859 A * 3/2000 Maeda 349/143
6,300,995 B1 * 10/2001 Wakagi et al. 349/141

A method of fabricating a thin film transistor array panel for a liquid crystal display is provided. A gate line assembly is formed on an insulating substrate. The gate line assembly includes gate lines and gate electrodes connected to the gate lines. A gate insulating layer is formed on the insulating substrate having the gate line assembly. A semiconductor layer is formed on the gate insulating layer. A data line assembly is formed, the data line assembly includes data lines crossing over the gate lines, source electrodes connected to the data lines and placed adjacent to the gate electrodes, and drain electrodes placed opposite to the source electrodes with respect to the gate electrodes. A protective layer is deposited onto the insulating substrate having the data line assembly. The protective layer is patterned to form first contact holes exposing the drain electrodes. Pixel electrodes are formed on the protective layer such that the pixel electrodes are electrically connected to the drain electrodes, wherein one of the gate line assembly and the data line assembly further includes a low resistance conductive layer.

9 Claims, 31 Drawing Sheets



US 7,599,037 B2

Page 2

U.S. PATENT DOCUMENTS

6,407,780 B1* 6/2002 Sung 349/43
6,433,842 B1* 8/2002 Kaneko et al. 349/43
6,462,802 B1* 10/2002 Nishimura et al. 349/147
6,509,940 B2* 1/2003 Kwak et al. 349/43
2001/0019375 A1* 9/2001 Kwon et al. 349/43
2002/0105604 A1* 8/2002 Ha et al. 349/43

FOREIGN PATENT DOCUMENTS

JP 06-230400 8/1994

JP 10104662 4/1998
JP 2000047240 2/2000
JP 2000199912 7/2000
JP 2000314897 11/2000
JP 2001-166338 6/2001
JP 2001-176878 6/2001
JP 2001166336 6/2001
JP 2001311954 11/2001
KR 19990075405 10/1999
TW 528912 B 4/2003

* cited by examiner

FIG. 1

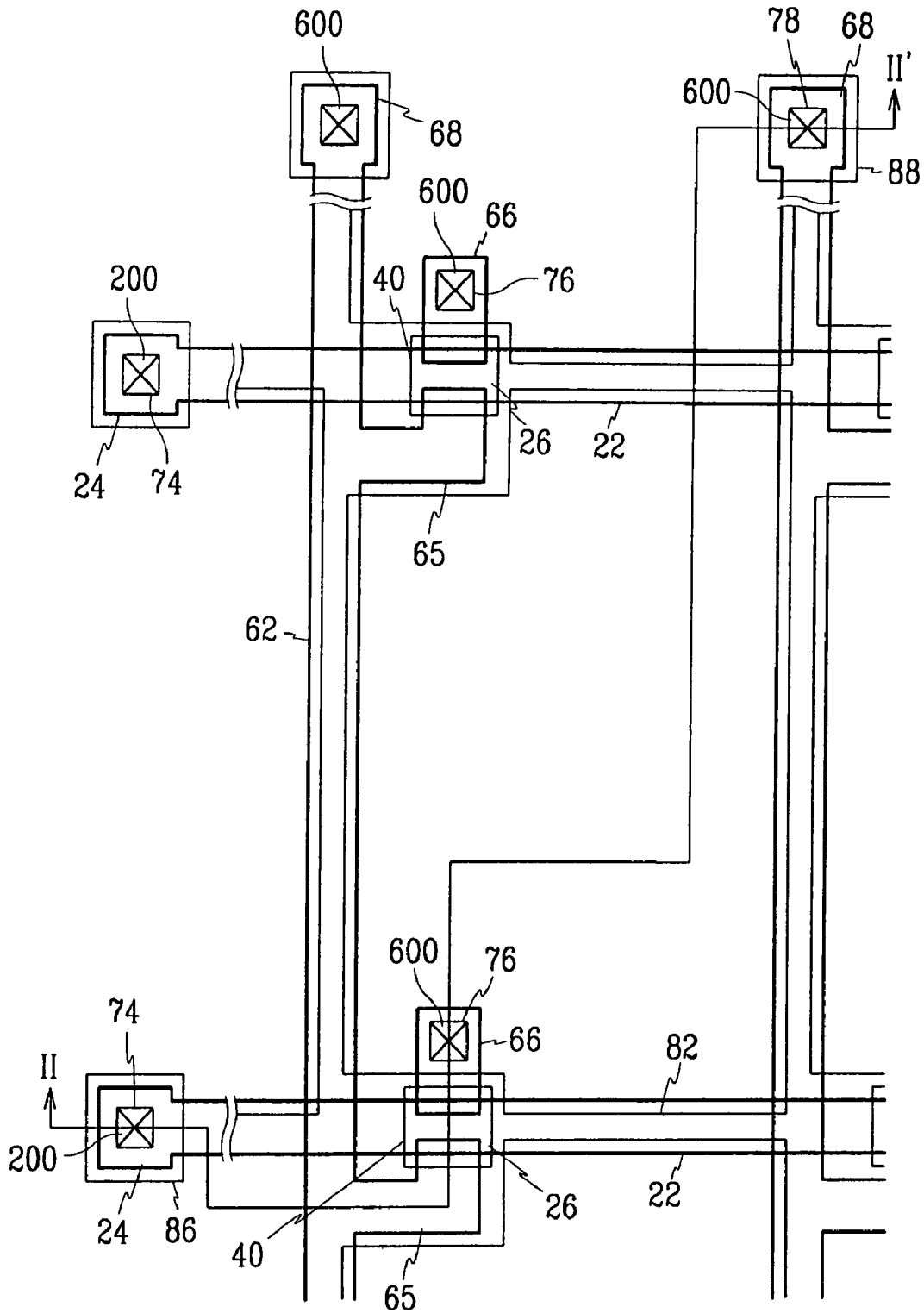


FIG. 3

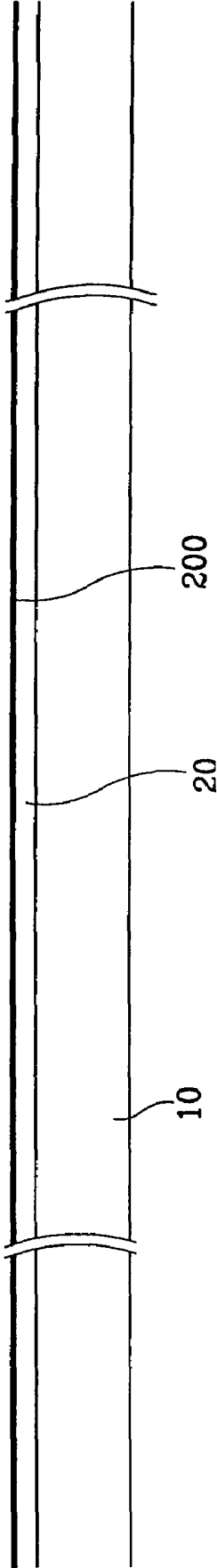


FIG. 4A

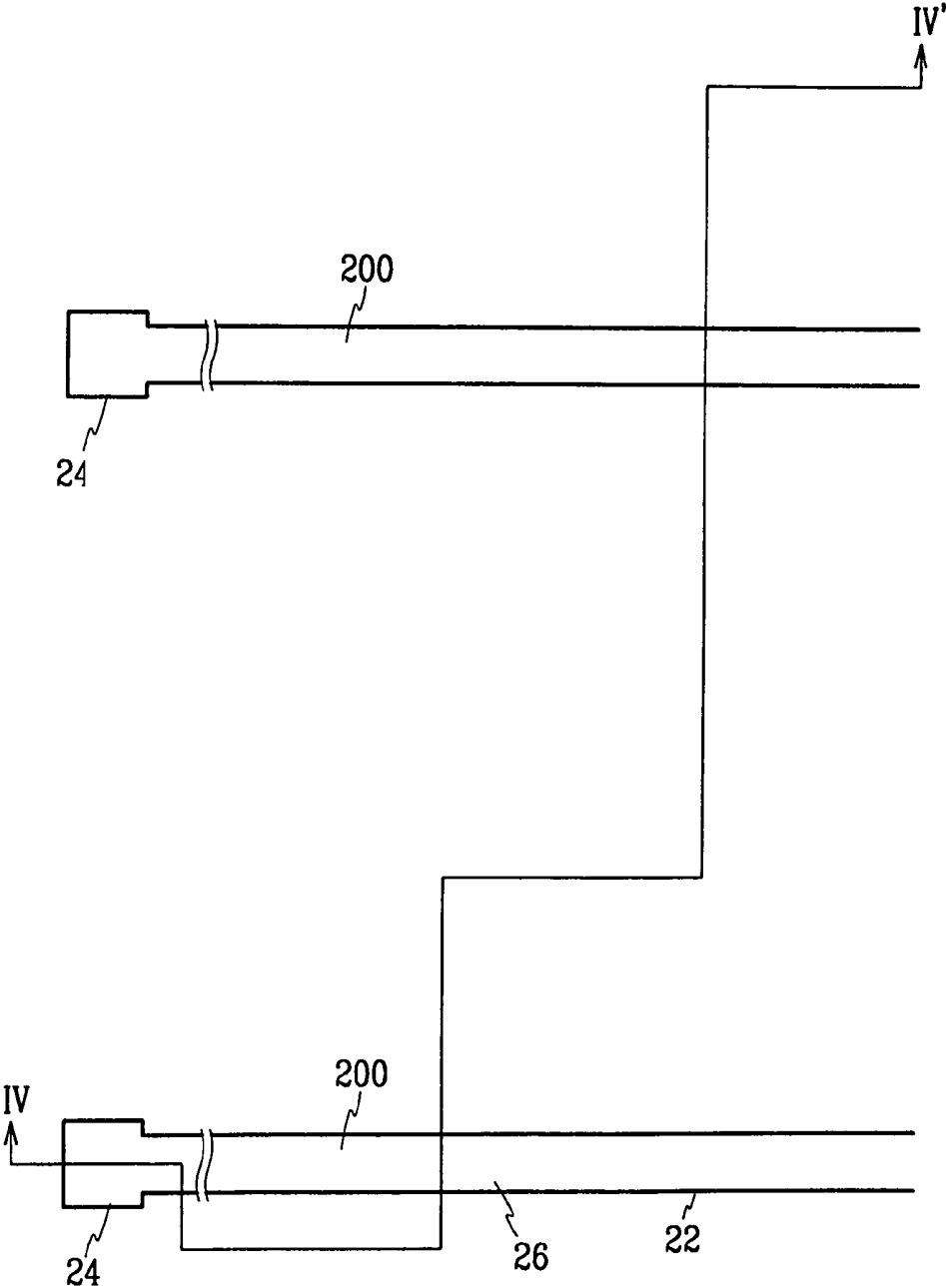


FIG. 4B

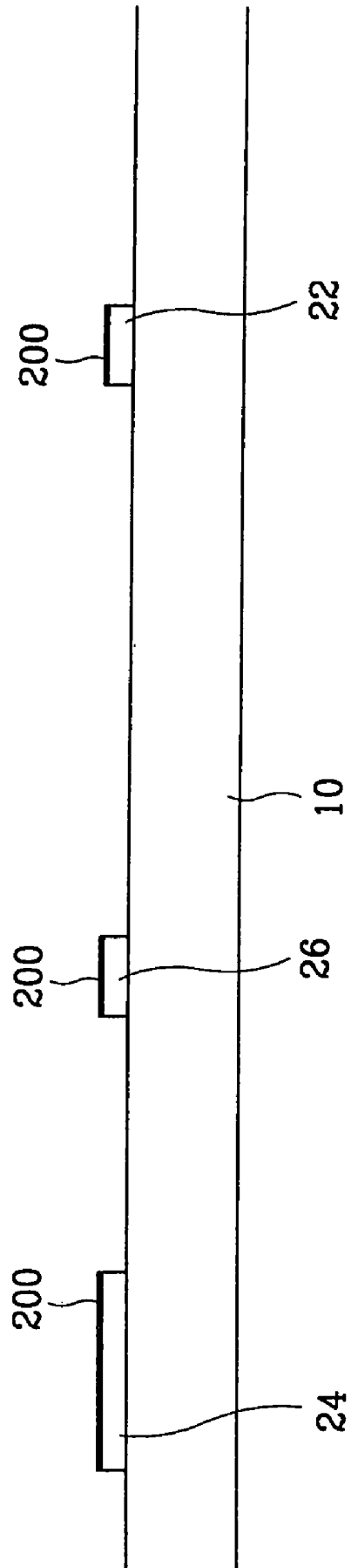


FIG. 5A

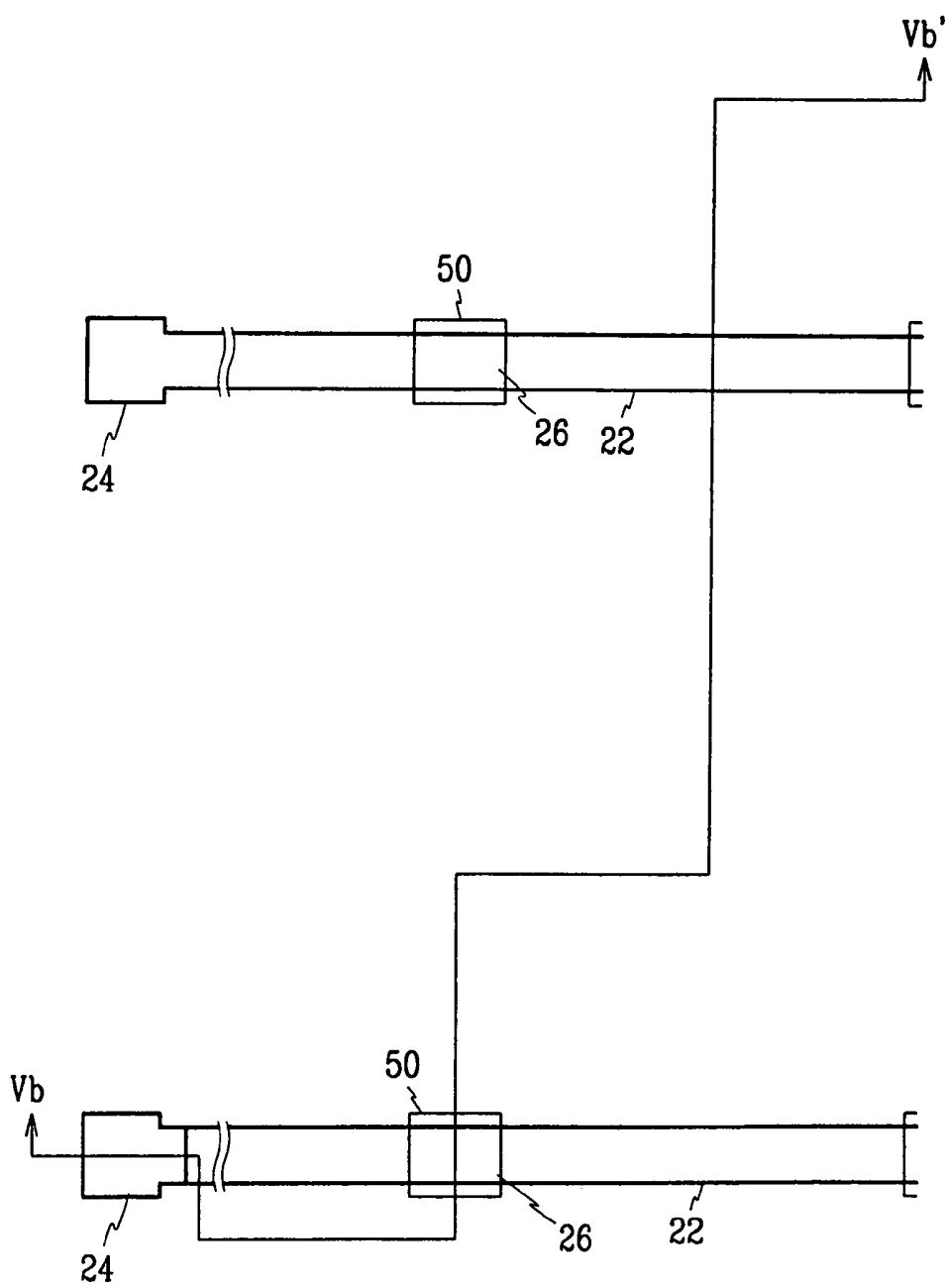


FIG. 5B

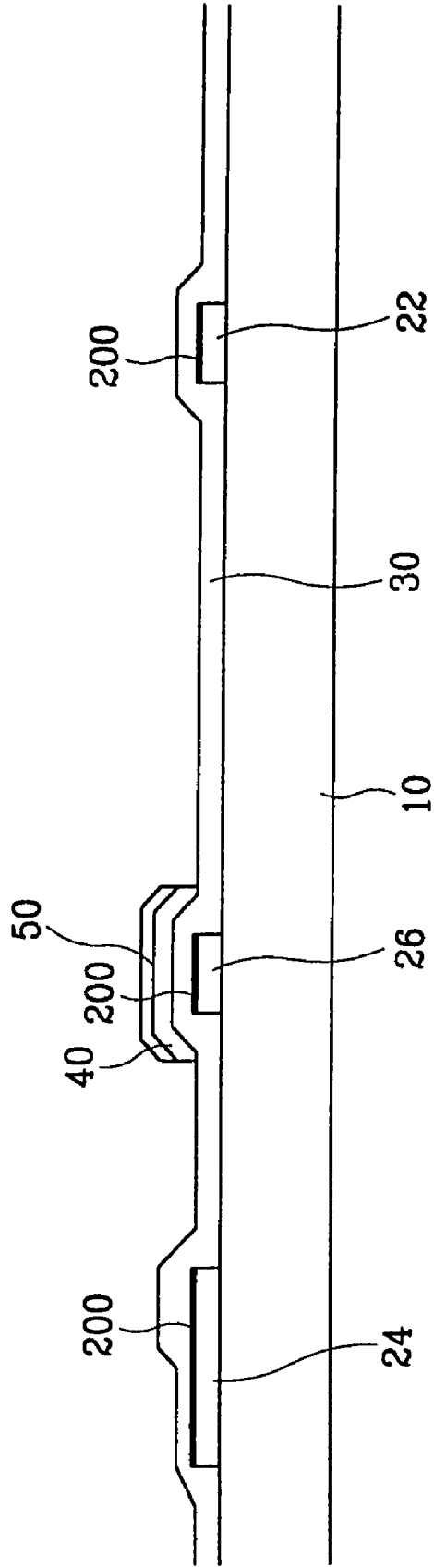


FIG. 6

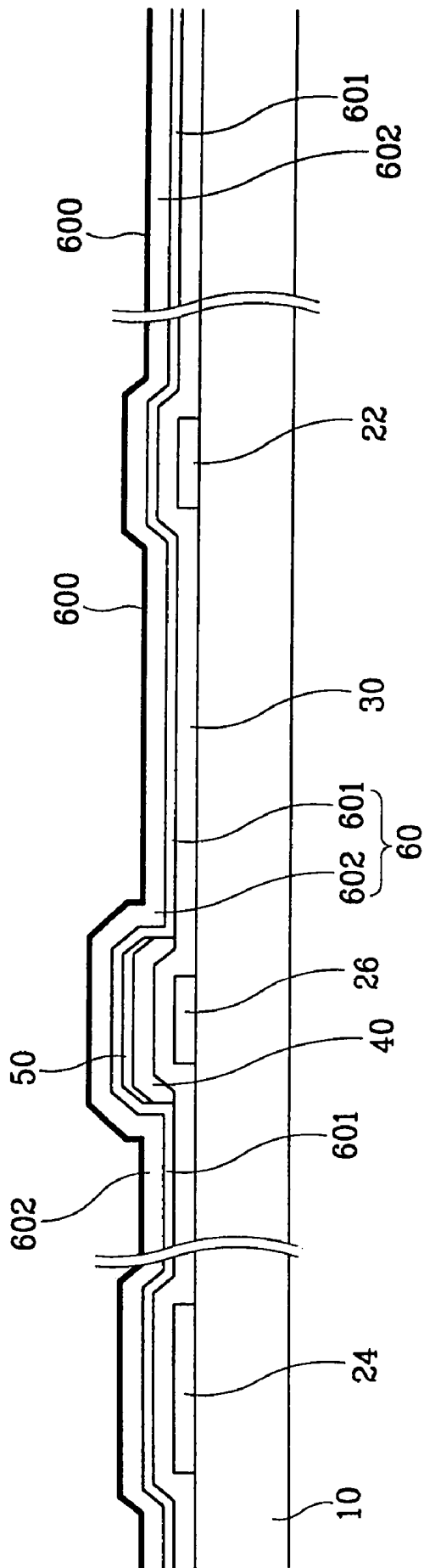


FIG. 7A

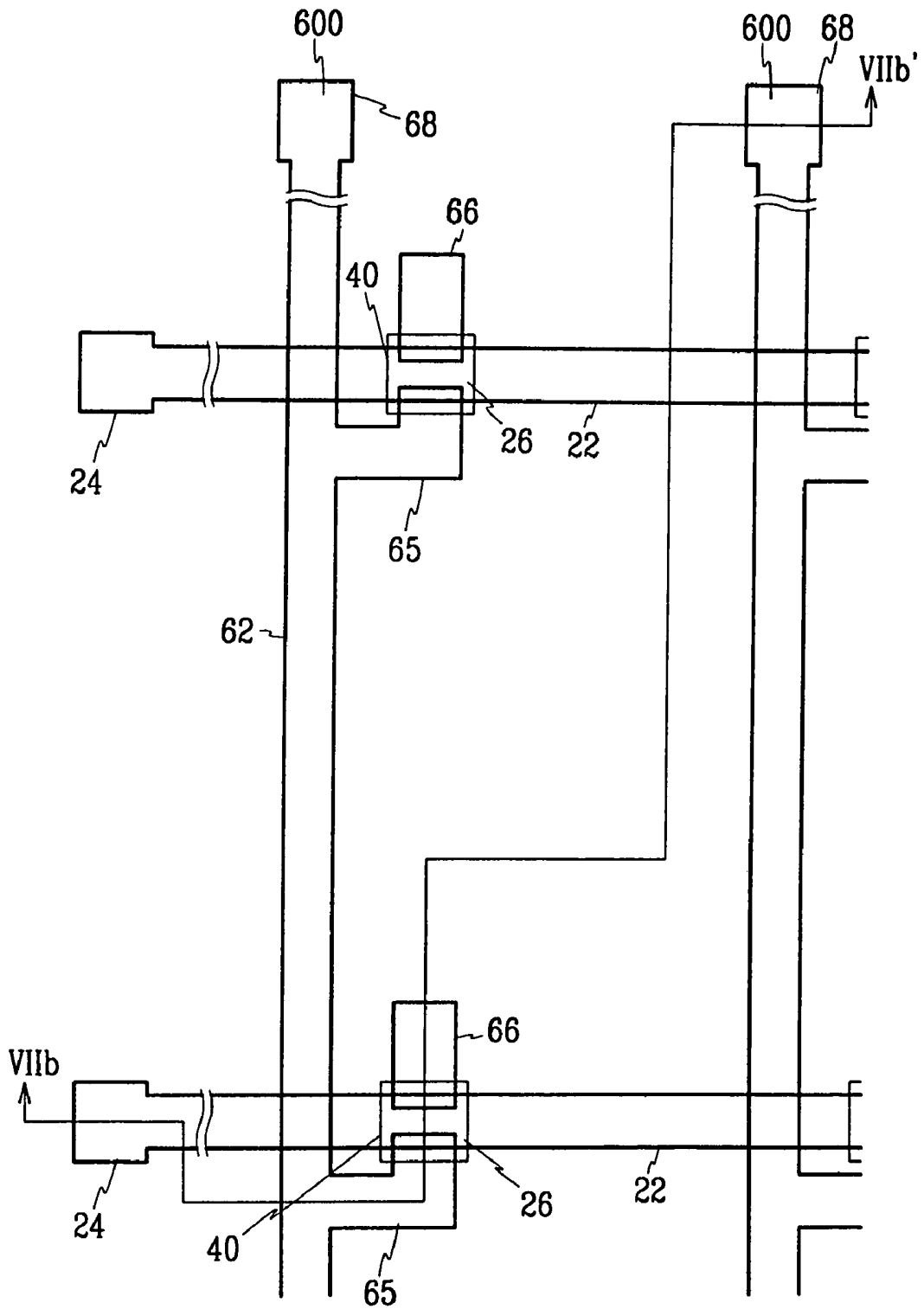


FIG. 7B

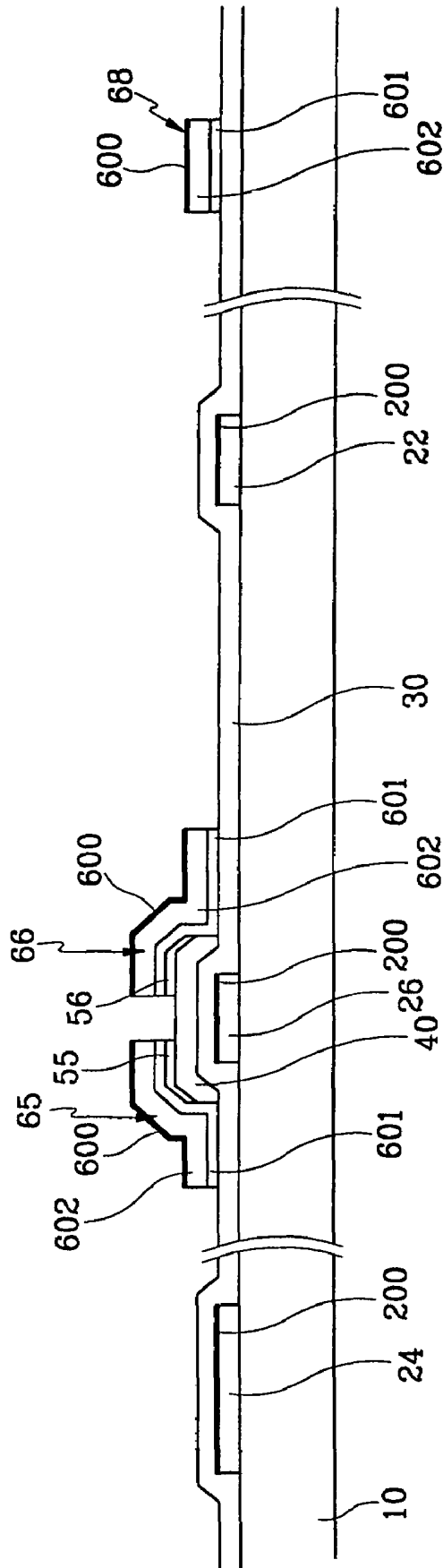


FIG. 8A

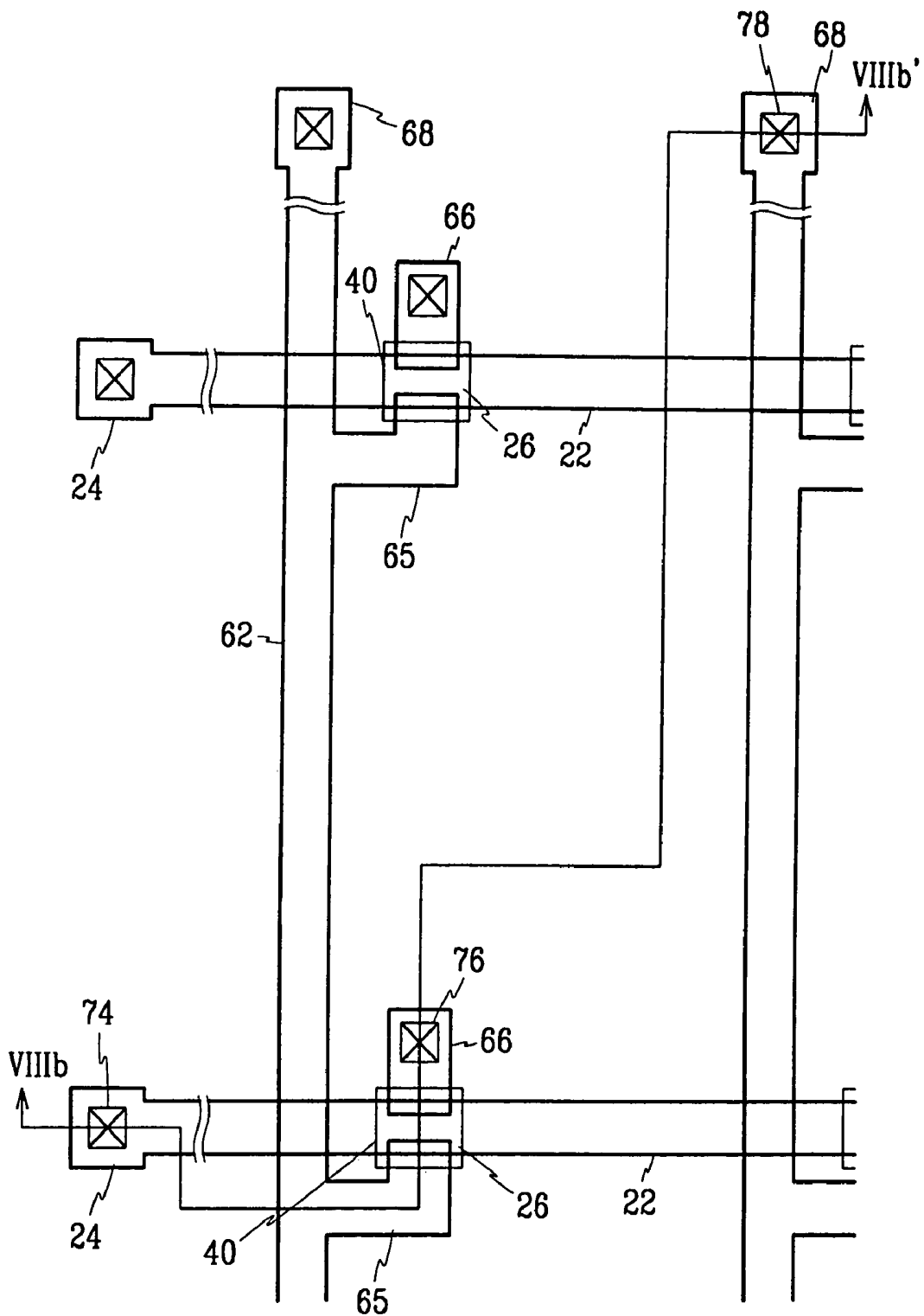


FIG. 8B

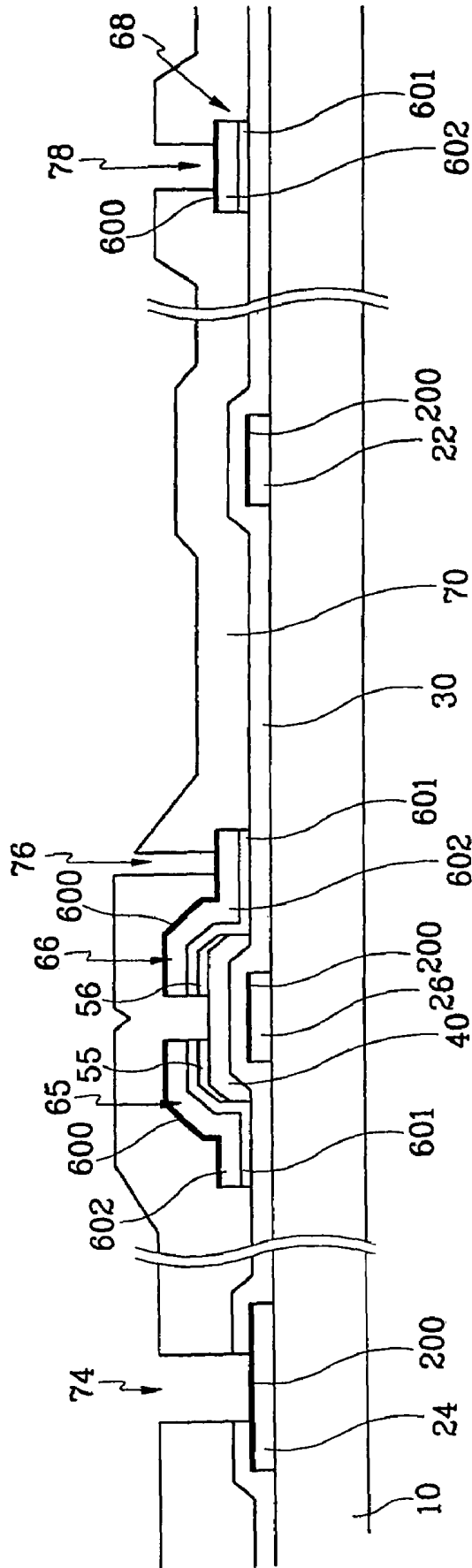


FIG. 9

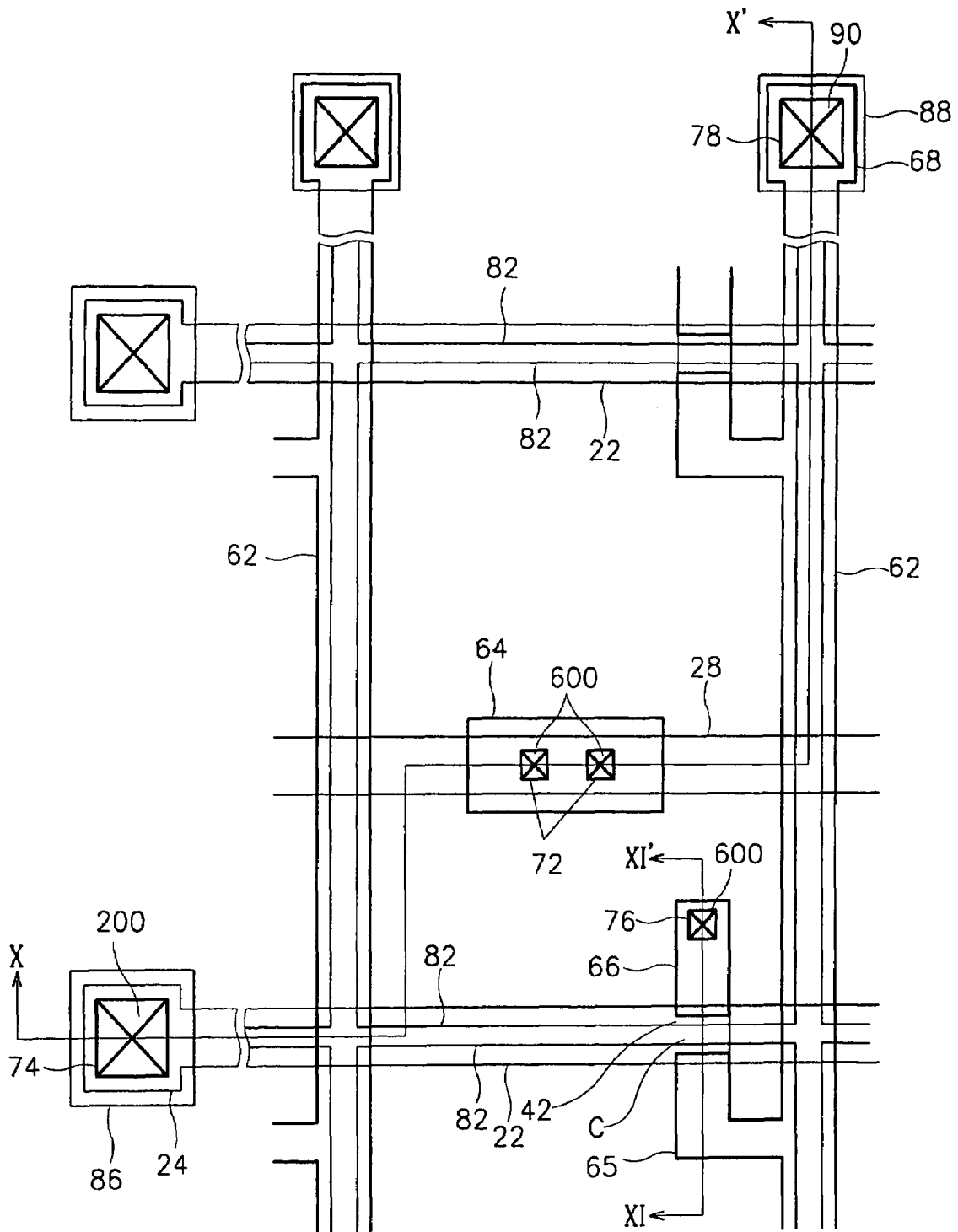


FIG. 12A

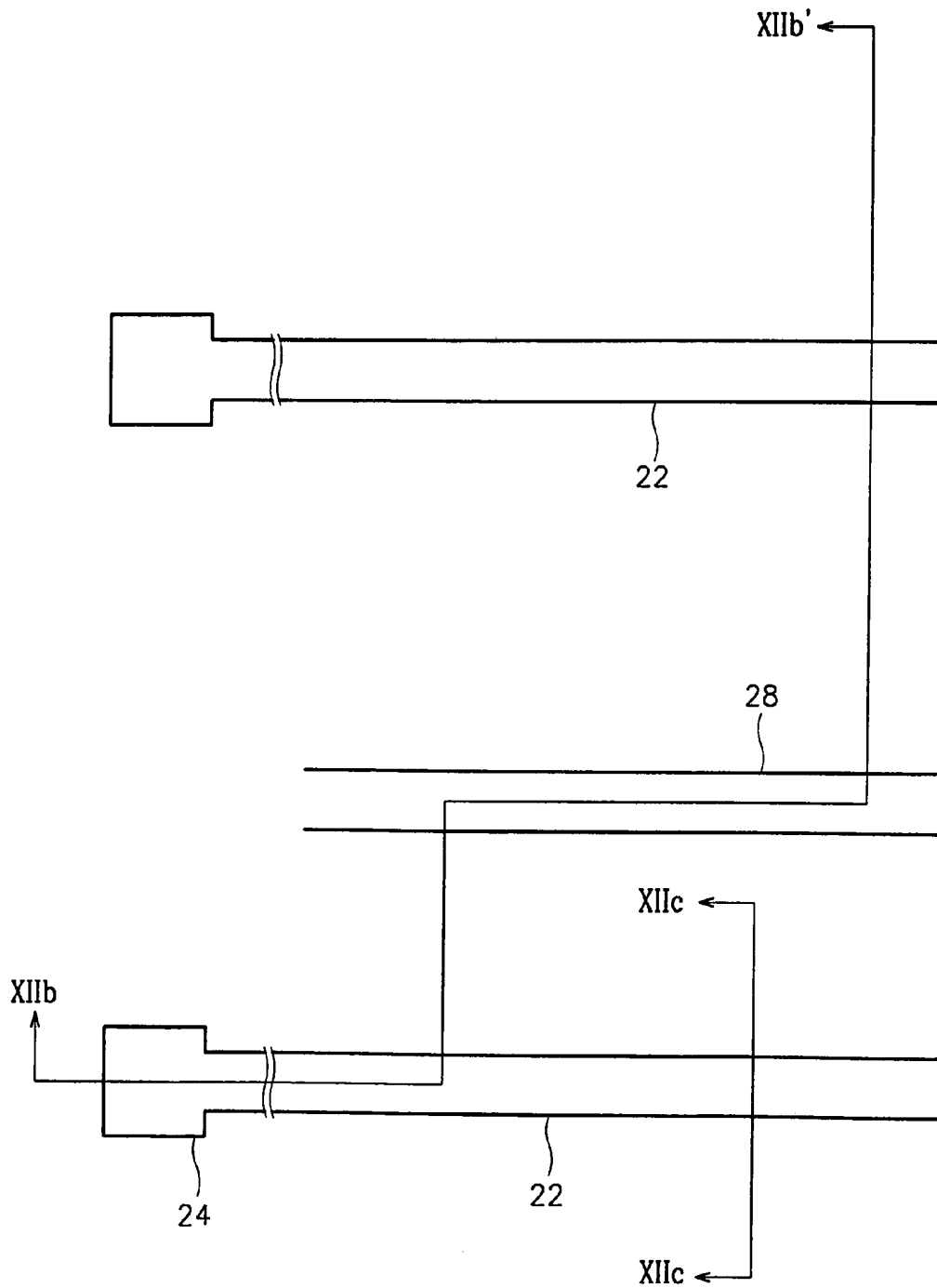


FIG. 12B

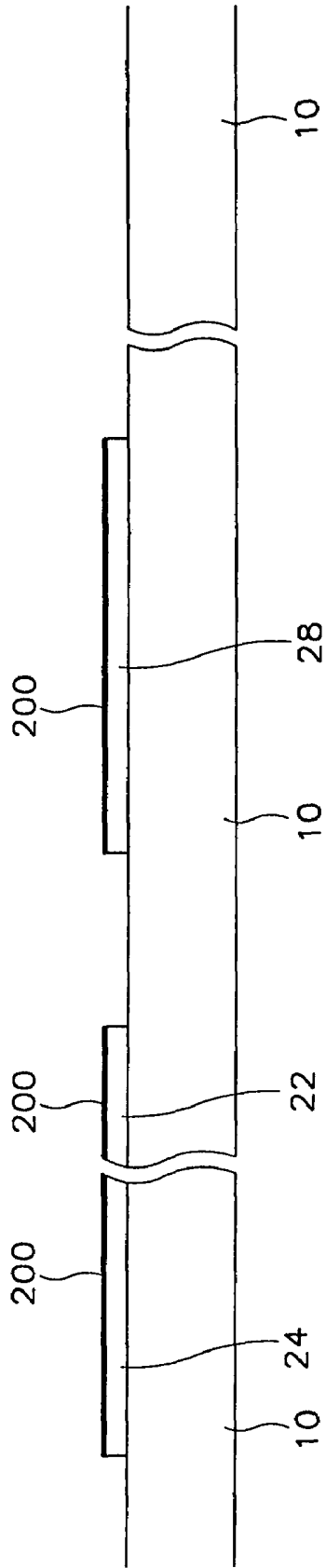


FIG. 12C

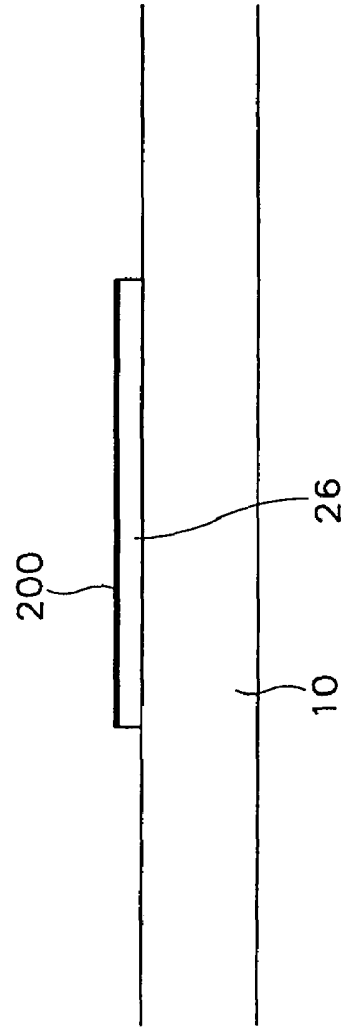


FIG. 13A

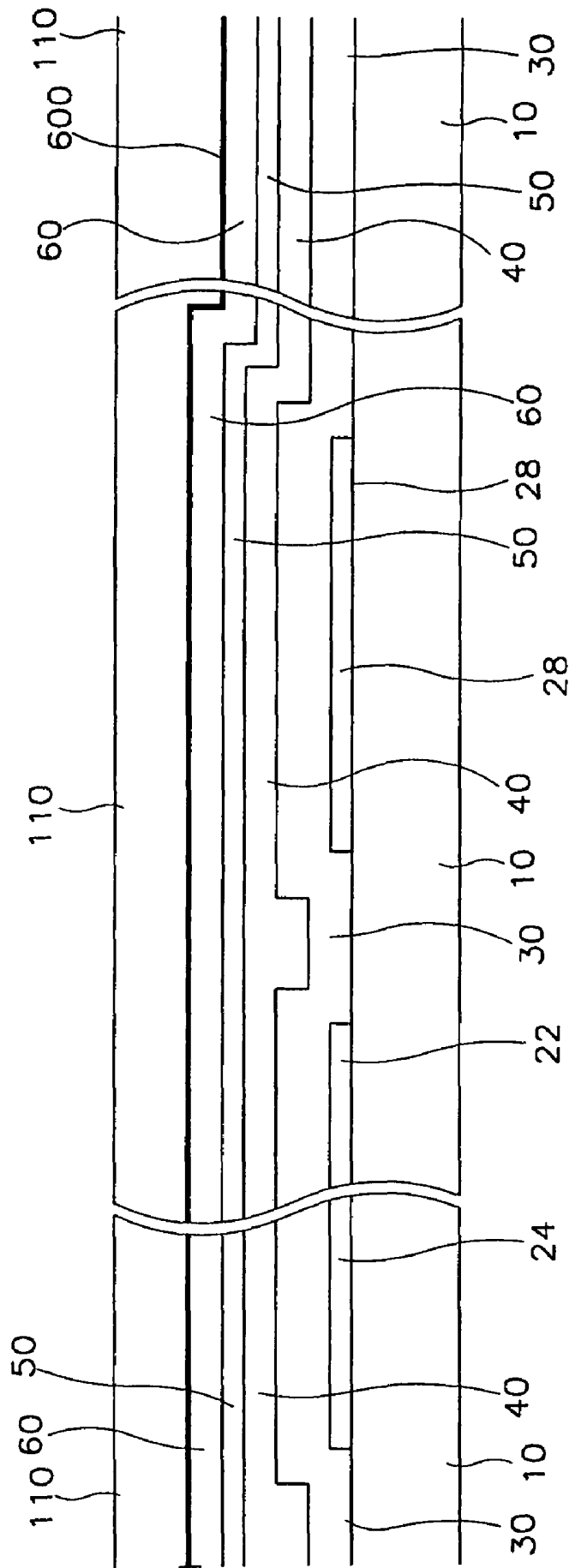


FIG. 13B

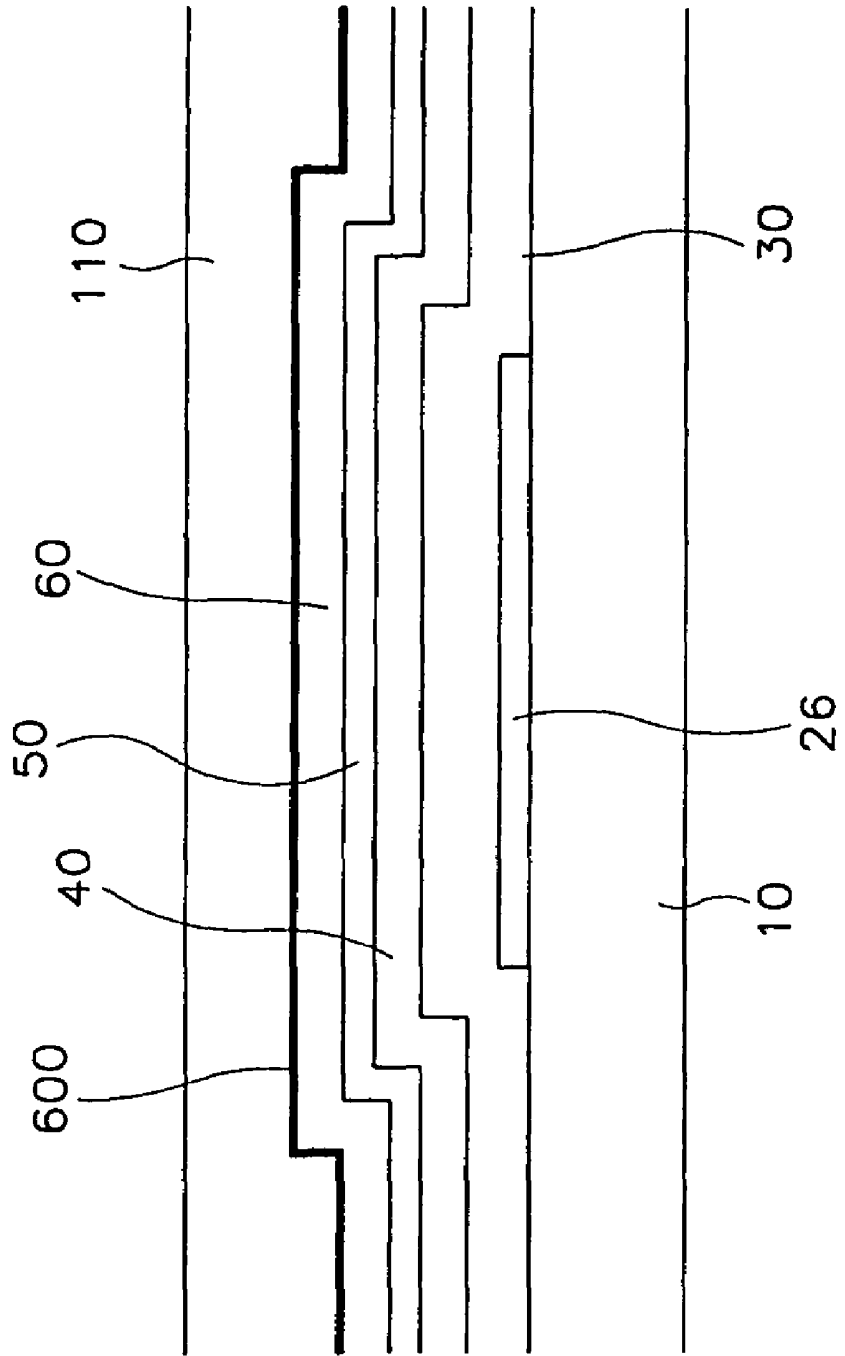


FIG. 14A

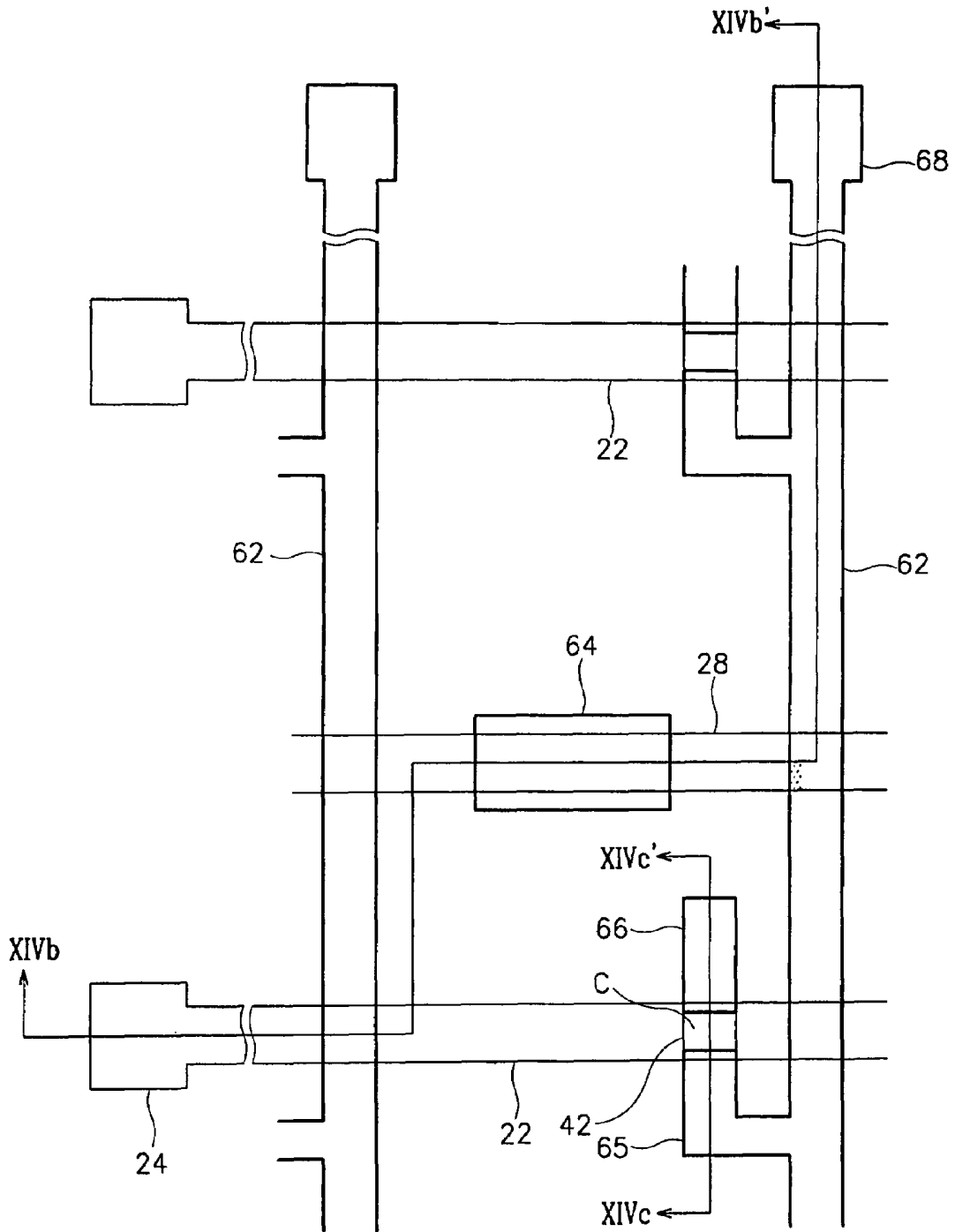


FIG. 14C

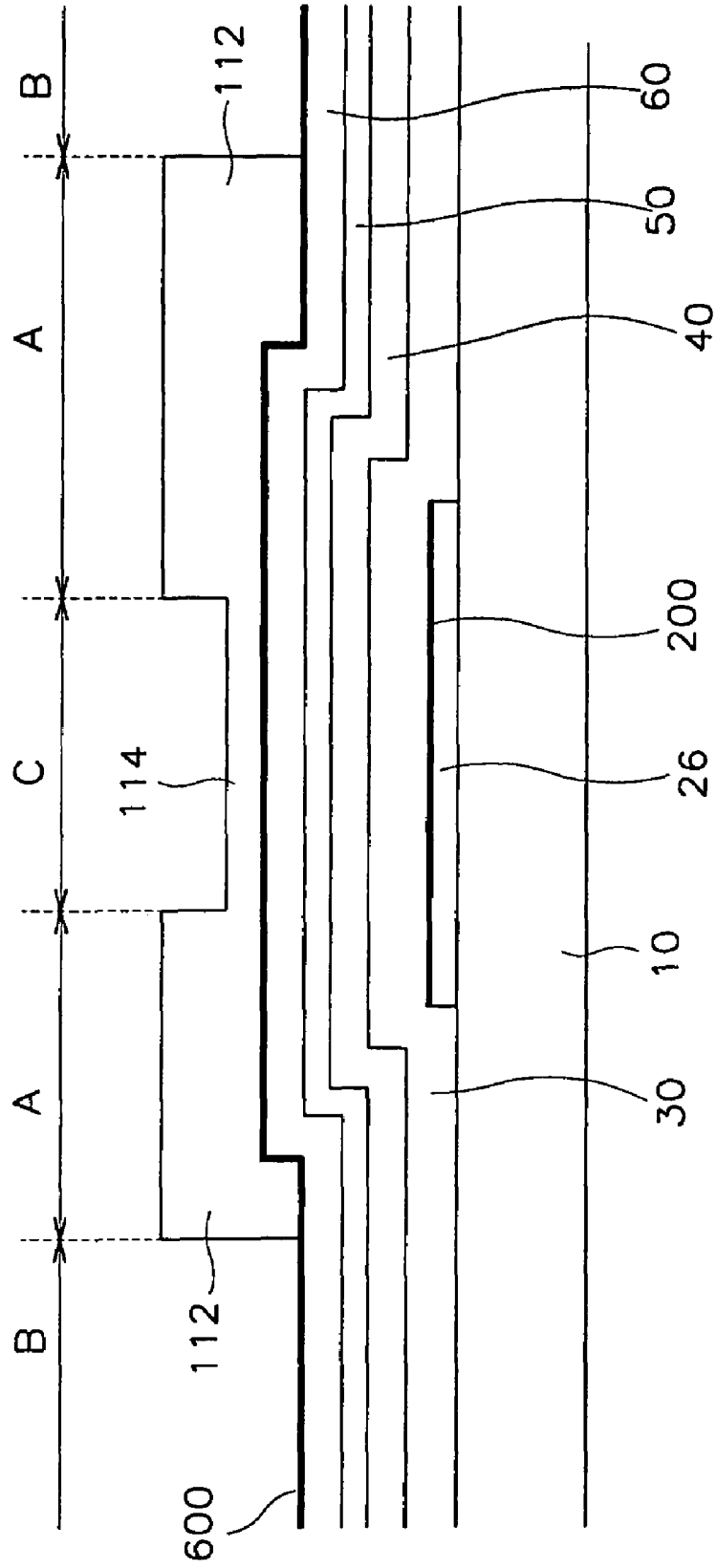


FIG. 15A

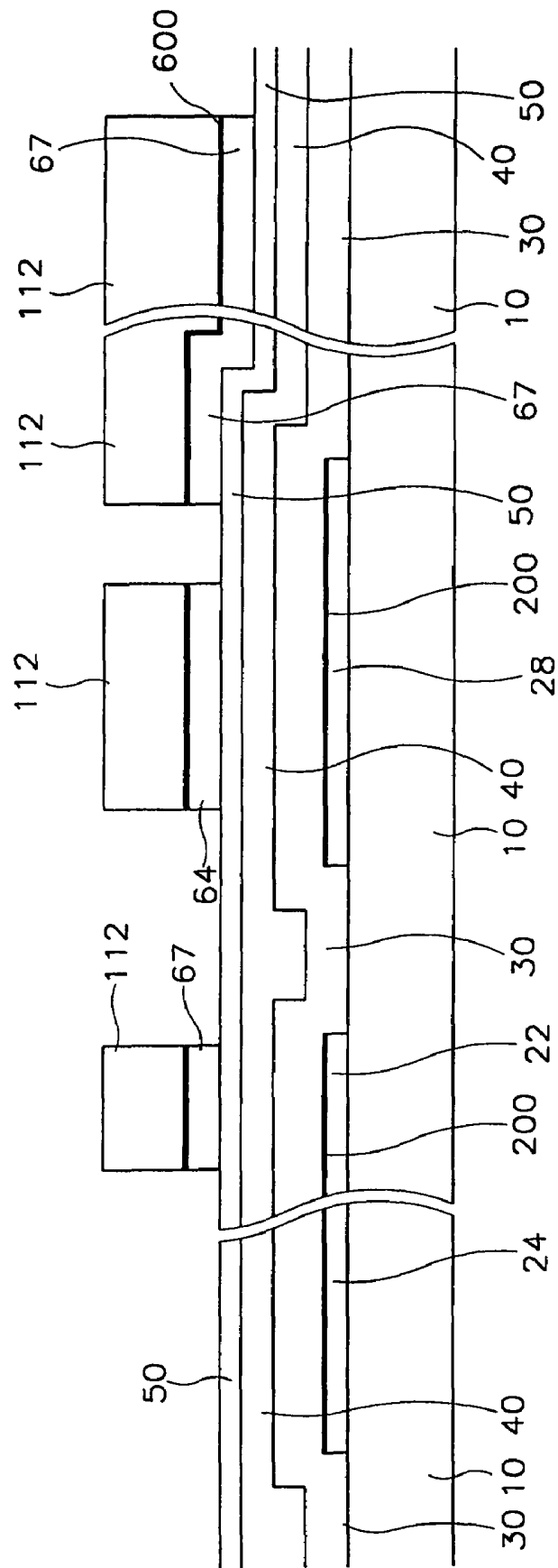


FIG. 15B

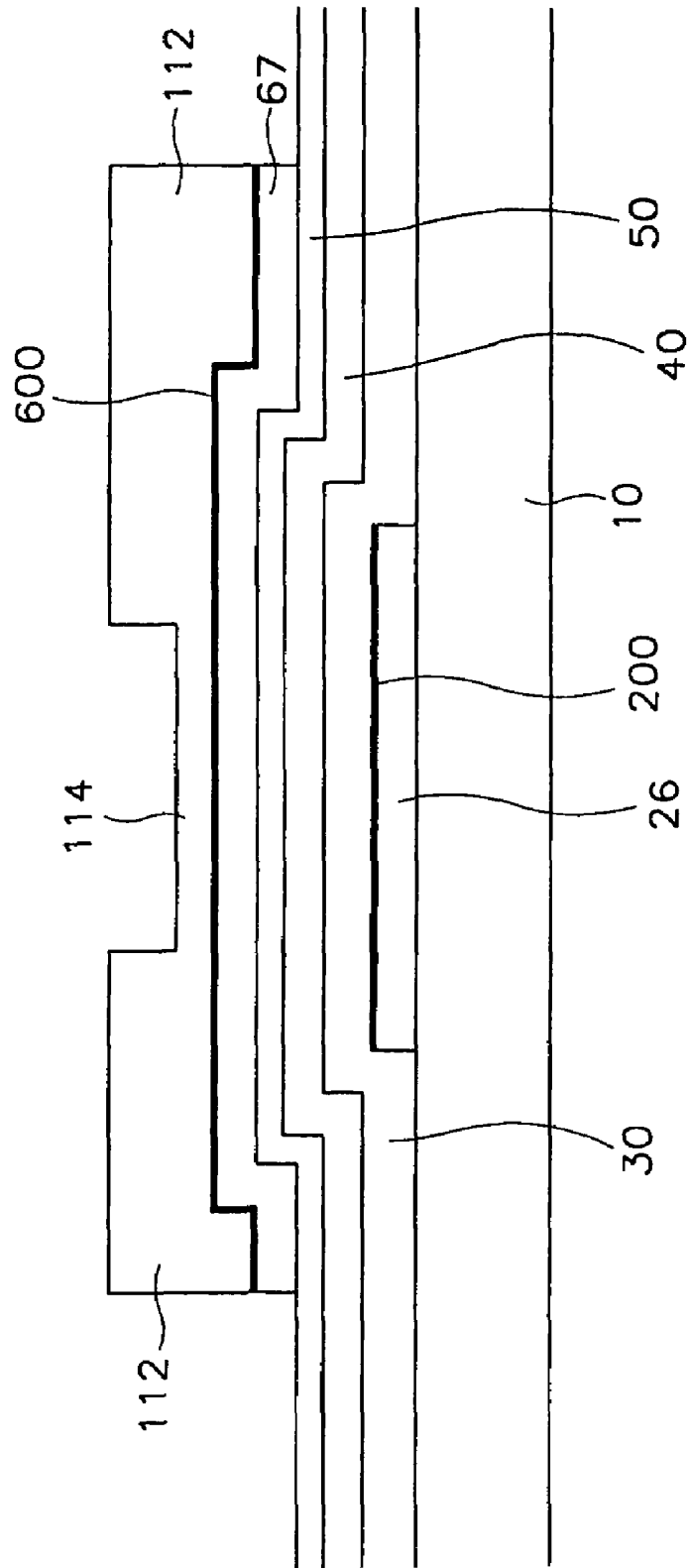


FIG. 16B

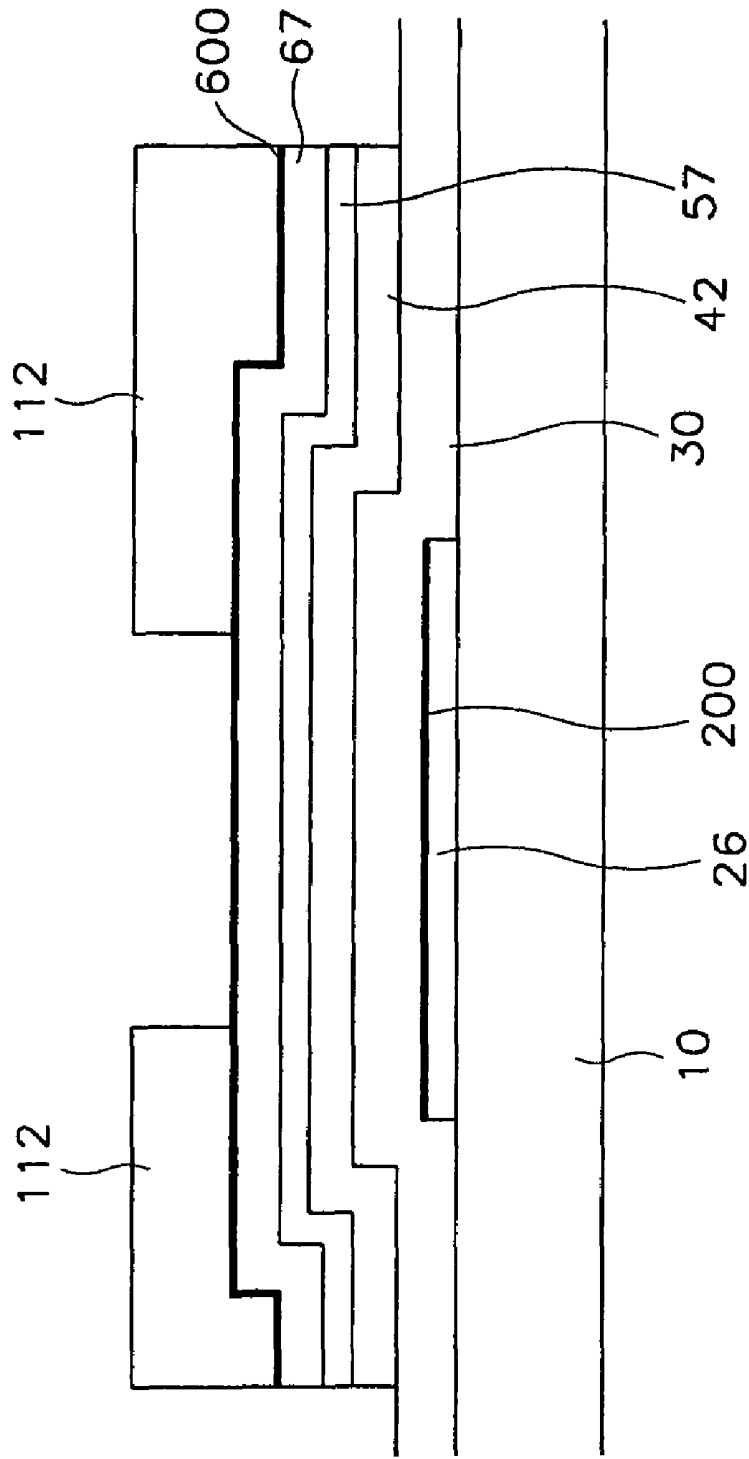


FIG. 17A

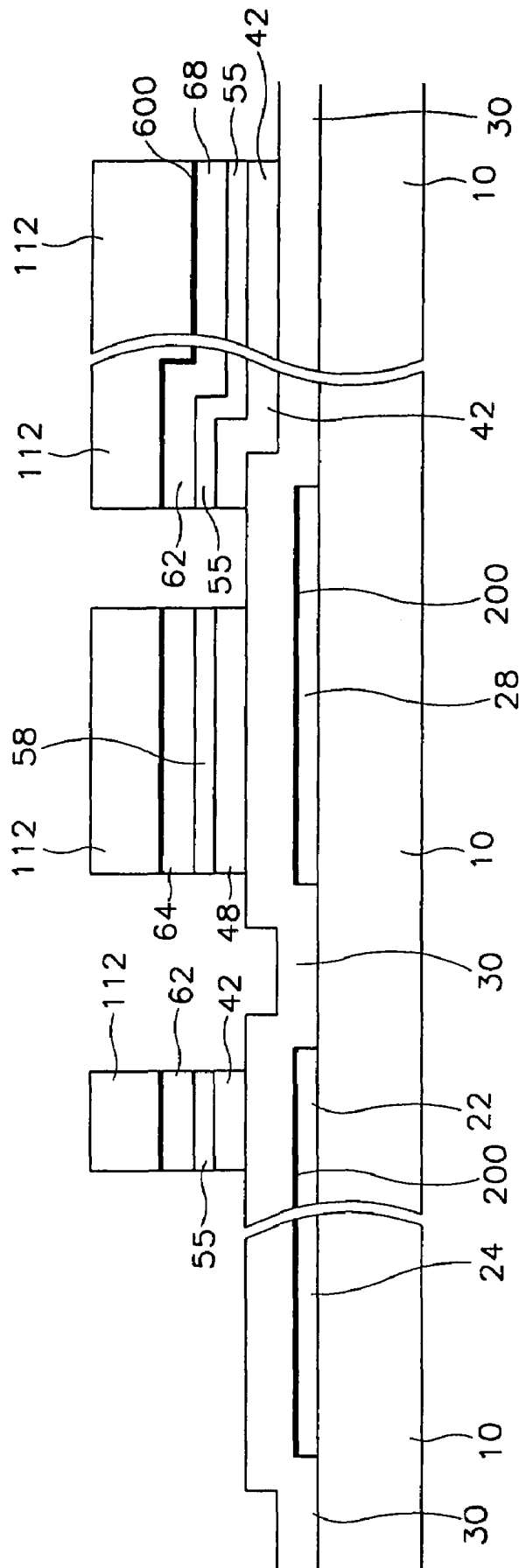
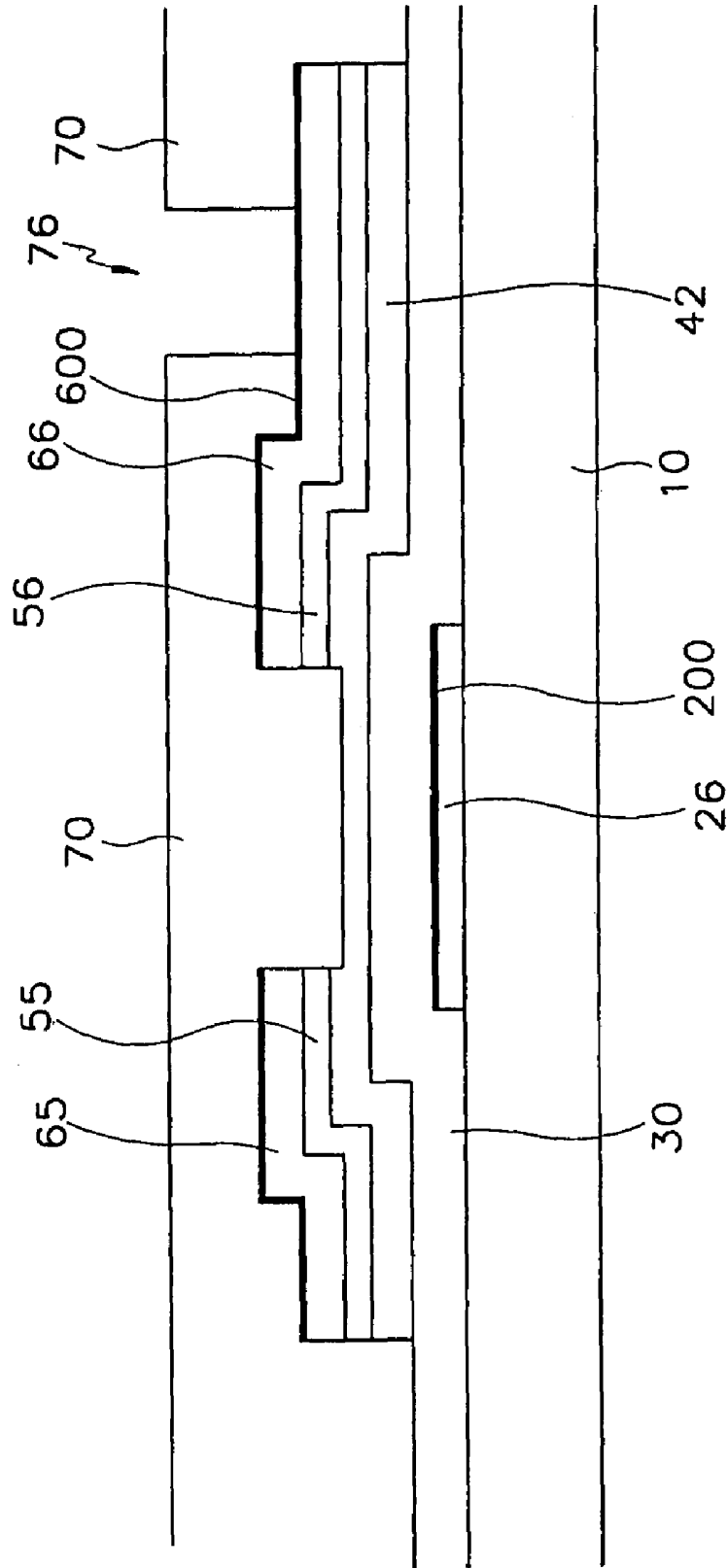


FIG. 18C



**THIN FILM TRANSISTOR ARRAY PANEL
FOR LIQUID CRYSTAL DISPLAY AND
METHOD FOR MANUFACTURING THE
SAME**

CROSS-REFERENCE TO RELATED
APPLICATIONS

This application is a Divisional of U.S. application Ser. No. 10/112,890 filed on Apr. 1, 2002 now U.S. Pat. No. 6,905,917, which claims priority to Korean Application No. 01-49963 filed on Aug. 20, 2001.

BACKGROUND OF THE INVENTION

(a) Field of the Invention

The present invention relates to a thin film transistor array panel for a liquid crystal display, and a method for manufacturing the same.

(b) Description of the Related Art

Generally, a liquid crystal display has two panels having electrodes, and a liquid crystal layer sandwiched between the two panels. Voltages are applied to the electrodes so that the liquid crystal molecules in the liquid crystal layer are re-oriented to thereby control light transmission.

Thin film transistors are formed on one of the panels for switching the voltages applied to the electrodes, and the panel having the thin film transistors is usually called "thin film transistor array panel". The thin film transistor array panel is generally fabricated through photolithography using masks. One way to reduce production costs is by reducing the number of masks.

Meanwhile, a low resistance material such as aluminum (Al) or aluminum alloy is used for forming wiring lines for the thin film transistor array panel to transmit applied signals with minimal delay. Furthermore, indium tin oxide (ITO) is generally used for forming pixel electrodes for the thin film transistor array panel. However, the ITO has poor contact characteristic with aluminum or aluminum alloy. Therefore, molybdenum or chrome instead of aluminum or aluminum alloy can be interposed between the wiring layer and the ITO-based pixel electrode. However, the manufacturing process is more complicated because the aluminum or aluminum alloy in pad regions must be removed.

Recently, indium zinc oxide (IZO) is proposed for forming the pixel electrodes as well as in forming the pads. However, IZO increases overall contact resistance at contact areas between the respective wiring line components including pads, which deteriorate image display characteristics of the liquid crystal display device. Thus, it is desirable to provide a method of fabricating a thin film transistor array panel for a liquid crystal display which has low resistance material-based wiring lines while ensuring reliability at the contact area.

SUMMARY OF THE INVENTION

A method of fabricating a thin film transistor array panel for a liquid crystal display is provided, which includes the steps of: forming a gate line assembly on an insulating substrate, the gate line assembly including gate lines and gate electrodes connected to the gate lines; forming a gate insulating layer on the insulating substrate having the gate line assembly; forming a semiconductor layer on the gate insulating layer; forming a data line assembly, the data line assembly including data lines crossing over the gate lines, source electrodes connected to the data lines and placed adjacent to the

gate electrodes, and drain electrodes placed opposite to the source electrodes with respect to the gate electrodes; depositing a protective layer onto the insulating substrate having the data line assembly; patterning the protective layer to form first contact holes exposing the drain electrodes; and forming pixel electrodes on the protective layer such that the pixel electrodes are electrically connected to the drain electrodes, wherein one of the gate line assembly and the data line assembly further includes a low resistance conductive layer.

According to an embodiment of the present invention, the gate line assembly and the data line assembly further includes a first low resistance conductive layer and a second low resistance conductive layer, respectively. The first low resistance conductive layer and the second low resistance conductive layer are continuously formed on the gate line assembly and the data line assembly, respectively, in a vacuum condition.

According to an embodiment of the present invention, the low resistance conductive layer is formed through reactive sputtering with addition of nitrogen gas. The low resistance conductive layer includes a layer containing nitrogen. The nitride containing layer includes one of an aluminum nitride layer, aluminum alloy nitride layer, and aluminum/neodymium alloy nitride layer.

According to an embodiment of the present invention, the gate line assembly includes one of a first conductive layer having aluminum, aluminum alloy, and aluminum/neodymium alloy. The gate line assembly further includes a second conductive layer having molybdenum or molybdenum alloy. The data line assembly includes a first conductive layer having aluminum or aluminum alloy. The data line assembly further includes a second conductive layer having one of molybdenum, molybdenum alloy molybdenum/tungsten alloy, chrome, and tantalum. The gate line assembly further includes gate pads for receiving scanning signals from the outside and transmitting the scanning signals to the gate lines, the data line assembly further includes data pads for receiving image signals from the outside and transmitting the image signals to the data lines, and the protective layer further includes second contact holes exposing the data pads and third contact holes exposing the gate pads together with the gate insulating layer, and the method further comprising the step of forming subsidiary gate pads and subsidiary data pads at the same level as the pixel electrodes such that the subsidiary gate pads and subsidiary data pads are electrically connected to the gate pads and the data pads through the second contact holes and the third contact holes, respectively.

According to an embodiment of the present invention, the pixel electrodes are formed with indium zinc oxide. The data line assembly and the semiconductor layer are formed through one photolithography process using a photoresist pattern differentiated in thickness. The data line assembly and the semiconductor layer are formed using one mask.

A thin film transistor array panel for a liquid crystal display is also provided, which includes: a substrate; a gate line assembly formed on the substrate, the gate line assembly including gate lines proceeding in a horizontal direction to receive scanning signals, and gate electrodes connected to the gate lines; a gate insulating layer covering the gate line assembly; a semiconductor pattern formed on the gate insulating layer with a semiconductor material; a data line assembly formed on the semiconductor pattern or the gate insulating layer, the data line assembly including data lines proceeding in a vertical direction, source electrodes branched from the data lines, and drain electrodes facing the source electrodes around the gate electrodes while being separated from the source electrodes; a protective pattern formed on the data line assembly and the semiconductor pattern, the protective pat-

tern including first contact holes exposing the drain electrodes; pixel electrodes formed on the protective pattern, the pixel electrodes being electrically connected to the drain electrodes through the first contact holes via the low resistance conductive layer, wherein one of the gate line assembly and the data line assembly further includes a low resistance conductive layer.

According to an embodiment of the present invention, the gate line assembly further includes gate pads connected to the gate lines to receive gate signals from the outside, the data line assembly further includes data pads connected to the data lines to receive image signals from the outside, and the protective pattern further includes second and third contact holes exposing the gate pads and the data pads, respectively. According to an embodiment of the present invention, the thin film transistor array panel further includes subsidiary gate and data pads formed at the same level as the pixel electrodes while being electrically connected to the gate and the data pads, respectively, through the second and the third contact holes, respectively, via the low resistance conductive layer. The pixel electrodes are formed with a transparent conductive material having indium zinc oxide. The gate line assembly and the data line assembly further include a first low resistance conductive layer and a second low resistance conductive layer, respectively. The low resistance conductive layer includes a layer containing nitrogen. The nitride containing layer includes an aluminum nitride layer or an aluminum alloy nitride layer. The gate line assembly includes a first conductive layer having one of aluminum, aluminum alloy, and aluminum/neodymium alloy. The gate line assembly further includes a second conductive layer having molybdenum or molybdenum alloy. The data line assembly includes a first conductive layer having aluminum or aluminum alloy. The data line assembly further includes a second conductive layer having one of molybdenum, molybdenum alloy, molybdenum alloy molybdenum/tungsten alloy, chrome, and tantalum. The semiconductor pattern has the same shape as the data line assembly except for the channel area between the source and the drain electrodes.

BRIEF DESCRIPTION OF THE DRAWINGS

A more complete appreciation of the invention and many of the attendant advantages thereof will be readily apparent as the same becomes better understood by reference to the following detailed description when considered in conjunction with the accompanying drawings in which like reference symbols indicate the same or the similar components, wherein:

FIG. 1 is a plan view of a thin film transistor array panel for a liquid crystal display according to a preferred embodiment of the present invention;

FIG. 2 is a cross sectional view of the thin film transistor array panel taken along the II-II' line of FIG. 1;

FIG. 3 illustrates the first step of fabricating the thin film transistor array panel shown in FIG. 1;

FIGS. 4A, 5A, 7A, and 8A illustrate the steps of fabricating the thin film transistor array panel following the step illustrated in FIG. 3;

FIG. 4B is a cross sectional view of the thin film transistor array panel taken along the IVb-IVb' line of FIG. 4A;

FIG. 5B is a cross sectional view of the thin film transistor array panel taken along the Vb-Vb' line of FIG. 5A;

FIG. 6 illustrates the step of fabricating the thin film transistor array panel following the step illustrated in FIG. 5B;

FIG. 7B is a cross sectional view of the thin film transistor array panel taken along the VIIb-VIIb' line of FIG. 7A;

FIG. 8B is a cross sectional view of the thin film transistor array panel taken along the VIIIb-VIIIb' line of FIG. 8A;

FIG. 9 is a plan view of a thin film transistor array panel for a liquid crystal display according to another preferred embodiment of the present invention;

FIGS. 10 and 11 are cross sectional views of the thin film transistor array panel taken along the X-X' line and the XI-XI' line of FIG. 9, respectively;

FIG. 12A illustrates the first step of fabricating the thin film transistor array panel shown in FIG. 9;

FIGS. 12B and 12C are cross sectional views of the thin film transistor array panel taken along the XIIb-XIIb' line and the XIIc-XIIc' line of FIG. 12A, respectively;

FIGS. 13A and 13B illustrate the step of fabricating the thin film transistor array panel following the step illustrated in FIG. 12A;

FIG. 14A illustrates the step of fabricating the thin film transistor array panel following the step illustrated in FIGS. 13A and 13B;

FIGS. 14B and 14C are cross sectional views of the thin film transistor array panel taken along the XIVb-XIVb' line and the XIVc-XIVc' line of FIG. 14A, respectively;

FIGS. 15A and 15B illustrate the step of fabricating the thin film transistor array panel following the step illustrated in FIG. 14A;

FIGS. 16A and 16B illustrate the step of fabricating the thin film transistor array panel following the step illustrated in FIGS. 15A and 15B;

FIGS. 17A and 17B illustrate the step of fabricating the thin film transistor array panel following the step illustrated in FIGS. 16A and 16B;

FIG. 18A illustrates the step of fabricating the thin film transistor array panel following the step illustrated in FIGS. 17A and 17B; and

FIGS. 18B and 18C are cross sectional views of the thin film transistor array panel taken along the XVIIIb-XVIIIb' line and the XVIIIc-XVIIIc' line of FIG. 18A.

DETAILED DESCRIPTION OF PREFERRED EMBODIMENTS

Preferred embodiments of this invention will be explained with reference to the accompanying drawings.

FIG. 1 is a plan view of a thin film transistor array panel for a liquid crystal display according to a preferred embodiment of the present invention. FIG. 2 is a cross sectional view of the thin film transistor array panel taken along the II-II' line of FIG. 1.

Referring to FIGS. 1 and 2, a gate line assembly is formed on an insulating substrate 10. According to an embodiment of the present invention, the gate assembly includes a first conductive layer having aluminum, aluminum alloy, or aluminum/neodymium alloy. The gate line assembly further includes a second conductive layer having molybdenum or molybdenum alloy. The gate line assembly includes gate lines 22 proceeding in the horizontal direction, gate pads 24 connected to the gate lines 22 to receive gate signals from the outside and transmit gate signals to the gate lines 22, and gate electrodes 26 connected to the gate lines 22.

A first low resistance conductive layer 200 is formed on the gate line assembly. According to an embodiment of the present invention, the first low resistance conductive layer 200 preferably includes an aluminum nitride layer, an aluminum alloy nitride layer, or aluminum/neodymium alloy nitride layer with conductive material for gate line assembly to minimize the contact resistance between the gate pads 24 and IZO-based subsidiary gate pads 84 to be formed later.

Next, a gate insulating layer **30** is formed on the substrate **10** with silicon nitride (SiNx) while covering the gate line assembly and the first low resistance conductive layer **200**. The gate insulating layer **30** has contact holes **74** exposing the first low resistance conductive layer **200** over the gate pads **24** together with a protective layer **70** to be formed later.

A semiconductor layer **40** is formed on the gate insulating layer **30** over the gate electrodes **26**, and ohmic contact layers **55** and **56** are formed on the semiconductor layer **40** with n⁺-hydrogenated amorphous silicon where n-type impurities are doped at a high concentration.

A data line assembly is formed on the ohmic contact layers **55** and **56** and the gate insulating layer **30** with a metallic or conductive material. According to an embodiment of the present invention, the conductive material includes a first conductive layer having aluminum or aluminum alloy. The conductive material further includes a second conductive layer having molybdenum, molybdenum alloy, molybdenum/tungsten alloy (MoW), chrome (Cr), and tantalum (Ta). The data line assembly includes data lines **62** proceeding in the vertical direction while crossing over the gate lines **22** to define pixels, source electrodes **65** branched from the data lines **62** while being extended over the ohmic contact layer **55**, data pads **68** connected to the data lines **62** to receive image signals from the outside, and drain electrodes **66** separated from the source electrodes **65** while being placed over the ohmic contact layer **56** opposite to the source electrodes **65** with respect to the gate electrodes **26**. According to an embodiment of the present invention, the data line assembly can be formed with a single-layered structure, or a double or more-layered structure. When the data line assembly is formed with a double-layered structure, it is preferable that one layer is formed with a low resistance material such as aluminum and aluminum alloy, and the other layer is formed with a material having good contact characteristic with other materials such as molybdenum, molybdenum alloy, chrome, and tantalum. For example, Cr/Al or Al alloy, or Al/Mo can preferably be used for the data line assembly. In this preferred embodiment, the data line assembly is formed with a lower layer **601** based on Cr or MoW, and an upper layer **602** based on Al alloy.

A second low resistance conductive layer **600** is formed on the data line assembly to minimize the contact resistance between the data line assembly and pixel electrodes **82** formed with IZO or subsidiary data pads **88** to be formed later. The second low resistance conductive layer **600** enhances the contact characteristic between two different material-based conductive layers. According to an embodiment of the present invention, the second low resistance conductive layer **600** includes at least a conductive material such as aluminum and aluminum alloy for the upper layer **602** of the data line assembly, and nitrogen. The second low resistance conductive layer **600** also includes chrome, molybdenum, or molybdenum alloy as the conductive material.

A protective layer **70** is formed on the data line assembly and the semiconductor layer **40**. The protective layer **70** has contact holes **76** and **78** exposing the second low resistance conductive layer **600** over the drain electrodes **66** and the data pads **68**, respectively, and contact holes **74** exposing the first low resistance conductive layer **200** over the gate pads **24** together with the gate insulating layer **30**.

A pixel line assembly is formed on the protective layer **70**. The pixel line assembly includes pixel electrodes **82** electrically connected to the drain electrodes **66** at the respective pixels while being in contact with the second low resistance conductive layer **600** over the drain electrodes **66** through the contact holes **76**, and subsidiary gate and data pads **86** and **88**

connected to the first and second low resistance conductive layers **200** and **600**, respectively, over the gate pads **24** and the data pads **68** through the contact holes **74** and **78**, respectively.

Referring to FIGS. **1** and **2**, the pixel electrodes **82** are overlapped with the gate lines **22** to thereby form storage capacitors. In case the desired storage capacitance is not obtained with the overlapping, a storage capacitor line assembly can be additionally provided at the same level as the gate line assembly.

As the above structure involves gate and data line assemblies including a low resistance conductive material such as aluminum or aluminum alloy, it can be well adapted for use in a wide-screened high definition liquid crystal display. Furthermore, as the data pads **68**, the drain electrodes **66**, and the gate pads **24** contact the subsidiary data pads **88**, pixel electrodes **82**, and subsidiary gate pads **84** by interposing the first and second low resistance conductive layers **200** and **600**, the contact resistance at the contact area can be minimized while giving reliability to the pad portions. In this way, the display characteristics of the resulting display device can be enhanced.

A method of fabricating the thin film transistor array panel is explained with reference to FIGS. **3** to **8B** as well as FIGS. **1** and **2**.

A conductive layer **20** is deposited onto an insulating substrate **10** through sputtering. According to an embodiment of the present invention, the conductive layer **20** is preferably formed of aluminum/neodymium alloy. The sputtering is performed in a sputtering chamber mounted with a low resistance aluminum/neodymium (Al/Nd) alloy target while supplying argon gas therein. Thereafter, a first low resistance conductive layer **200** is formed on the conductive layer **20** through reactive sputtering with the addition of nitrogen gas. According to an embodiment of the present invention, the first low resistance conductive layer **200** preferably includes an aluminum nitride layer, an aluminum alloy nitride layer, or aluminum/neodymium alloy nitride layer. A ratio of the argon gas to the nitrogen gas supplied into the sputtering chamber is controlled to have conductivity of the first low resistance conductive layer **200**, and a thickness of the first low resistance conductive layer **200** is controlled to be patterned through wet or dry etching together with the underlying conductive layer **20**. According to an embodiment of the present invention, the first low resistance conductive layer **200** is continuously deposited onto the conductive layer **20** without vacuum break, thereby preventing the forming of a high resistance layer, such as an Al₂O₃ layer, on the conductive layer **20** (in air). If such a high resistance layer is formed, contact resistance is increased.

Thereafter, referring to FIGS. **4A** and **4B**, the conductive layer **20** and the first low resistance conductive layer **200** are simultaneously patterned to thereby form a gate line assembly overlaid with the first low resistance conductive layer **200**. The gate line assembly includes gate lines **22**, gate electrodes **26**, and gate pads **24**.

Referring to FIGS. **5A** and **5B**, a gate insulating layer **30**, a semiconductor layer **40** formed with an amorphous silicon and a doped amorphous silicon-based layer **50** are sequentially deposited onto the insulating substrate **10**. The semiconductor layer **40** and the doped amorphous silicon layer **50** are patterned using a mask to thereby form a semiconductor layer **40** and an ohmic contact layer **50** on the gate insulating layer **30** over the gate electrodes **26**.

Referring to FIG. **6**, a lower layer **601** is deposited onto the substrate **10** with molybdenum, molybdenum/tungsten alloy or chrome in a thickness of about 300 Å, and an upper layer **602** is deposited onto the lower layer **601** with aluminum/

neodymium alloy in a thickness of about 2500 Å. A second low resistance conductive layer 600 is continuously deposited onto the upper layer 602 through reactive sputtering within the same sputtering chamber for forming the lower layer 601 and the upper layer 602 under the vacuum atmosphere while supplying nitrogen gas therein. According to an embodiment of the present invention, the second low resistance conductive layer 600 is preferably formed with aluminum/neodymium alloy nitride. In this way, the forming of a high resistance layer such as an Al₂O₃ layer on the upper layer 602, such as Al/Nd layer 602 in air is prevented. If the high resistance layer is formed, contact resistance at the contact area is increased for subsequent processing steps.

Referring to FIGS. 7A and 7B, the second low resistance conductive layer 600, the upper layer 602, and the lower layer 601 are patterned through photolithography using a mask (not shown) to thereby form a data line assembly overlaid with a second low resistance conductive layer 600. According to an embodiment of the present invention, the upper layer 602 and the lower layer 601 can be etched through wet etching. Alternatively, the upper layer 602 is etched through wet etching, whereas the lower layer 601 is etched through dry etching. In case the lower layer 601 is formed with molybdenum or molybdenum/tungsten alloy, the lower layer 601 and the upper layer 602 are preferably patterned through wet etching together.

Thereafter, the doped amorphous silicon layer 50 (in FIG. 6) exposed by etching the second low resistance conductive layer 600, the upper layer 602 and the lower layer 601 is etched to form separated two ohmic contact layers 55 and 56 around the gate electrode 26 while exposing the semiconductor layer 40 over the gate electrode 26. According to an embodiment of the present invention, an oxygen plasma process is further performed to stabilize the surface of the exposed semiconductor layer 40.

Next, referring to FIGS. 8A and 8B, a protective layer 70 is formed onto the substrate 10 with silicon nitride or an organic insulating material, and patterned together with the gate insulating layer 30 through dry etching until the first and second low resistance conductive layers 200 and 600 are exposed to thereby form contact holes 74, 76, and 78 exposing the first and second low resistance conductive layers 200 and 600 over the gate pads 24, the drain electrodes 66 and the data pads 68.

Finally, referring back to FIGS. 1 and 2, a transparent layer such as an IZO layer is deposited onto the substrate 10, and patterned using a mask to thereby form pixel electrodes 82, and subsidiary gate and data pads 86 and 88. The pixel electrodes 82 are electrically connected to the drain electrodes 66 while contacting the second low resistance conductive layer 600 over the drain electrodes 66 through the contact holes 76. The subsidiary gate and data pads 86 and 88 are electrically connected to the first and second low resistance conductive layers 200 and 600 over the gate pads 24 and the data pads 68 through the contact holes 74 and 78.

As described above, the first and second low resistance conductive layers 200 and 600 having nitrogen are deposited onto the gate line assembly and the data line assembly, respectively, without a break in vacuum, thereby preventing air exposure and the forming of a high resistance layer such as an aluminum oxide layer on the conductive layer. Accordingly, the thin film transistor array panel according to an embodiment of the present invention can be fabricated without affect from variations in the processing conditions. The connection of the pixel electrode 82 to the drain electrode 66 is made by interposing the second low resistance conductive

layer 600 while minimizing the contact resistance at the contact area. In this way, the contact area including the pad portions operates reliability.

The above-decreased process can also be made using four masks. The four mask-based processing will now be explained with reference to FIGS. 9 to 11.

FIG. 9 is a plan view of a thin film transistor array panel for a liquid crystal display according to another preferred embodiment of the present invention, and FIGS. 10 and 11 are cross sectional views of the thin film transistor array panel taken along the X-X' line and the XI-XI' line of FIG. 9.

Referring to FIG. 9, a gate line assembly is formed on an insulating substrate 10. According to an embodiment of the present invention, the gate assembly includes a first conductive layer having aluminum, aluminum alloy, or aluminum/neodymium alloy. The gate line assembly further includes a second conductive layer having molybdenum or molybdenum alloy. The gate line assembly includes gate lines 22, gate pads 24, and gate electrodes 26. The gate line assembly further includes storage capacitor electrodes 28 proceeding parallel to the gate lines 22 to receive common electrode voltages from the outside. The storage capacitor electrodes 28 are overlapped with storage capacitor conductive patterns 64 connected to pixel electrodes 82 to be described later to thereby form storage capacitors for enhancing the electrical potential storage capacitance of the pixels. In case a sufficient storage capacitance is obtained by way of overlapping of the pixel electrodes 82 with the gate lines 22, the storage capacitor electrodes 28 can be omitted.

A first low resistance conductive layer 200 is formed on the gate line assembly. According to an embodiment of the present invention, the first low resistance conductive layer 200 is preferably formed of an aluminum/neodymium alloy nitride (Al/Nd/N) layer.

A gate insulating layer 30 is formed on the gate line assembly and the first low resistance conductive layer 200 with silicon nitride (SiNx).

Semiconductor patterns 42 and 48 are formed on the gate insulating layer 30 with hydrogenated amorphous silicon. Ohmic contact patterns 55, 56 and 58 are formed on the semiconductor patterns 42 and 48 with amorphous silicon where n-type impurities such as phosphorous P are doped in a high concentration.

A data line assembly is formed on the ohmic contact patterns 55, 56, and 58 with including aluminum or aluminum alloy. The data line assembly includes data lines 62 proceeding in the vertical direction, data pads 68 connected to the one-sided ends of the data lines 62 to receive image signals from the outside, source electrodes 65 connected to the data lines 62, and drain electrodes 66 separated from the source electrodes 65 around the gate electrodes 26 or the thin film transistor channel portions C. The storage capacitor conductive patterns 64 are formed over the storage capacitor electrodes 28. In case the storage capacitor electrodes 28 are absent, the storage capacitor conductive patterns 64 are also omitted.

A second low resistance conductive layer 600 is formed on the data line assembly with a low resistance conductive material such as aluminum or aluminum alloy, and nitrogen.

The data line assembly can have a single-layered structure, or a double-layered structure having a lower layer based on chrome, molybdenum or molybdenum alloy, and an upper layer based on aluminum or aluminum alloy.

The ohmic contact patterns 55, 56, and 58 lower the contact resistance between the underlying semiconductor patterns 42 and 48 and the overlying data line assembly while having the similar shape as the data line assembly. That is, the data line

ohmic contact pattern **55** has the similar shape as the data lines **62**, the data pads **68**, and the source electrodes **65**, the ohmic contact pattern **56** has the similar shape as the drain electrodes **66**, and the ohmic contact pattern **58** has the similar shape as the storage capacitor conductive pattern **64**.

The semiconductor patterns **42** and **48** have the similar shape as the data line assembly and the ohmic contact patterns **55**, **56**, and **57** except for the thin film transistor channel portions C. Specifically, the storage capacitor semiconductor pattern **48**, the storage capacitor conductive pattern **64**, and the storage capacitor ohmic contact pattern **58** have the similar shape, but the thin film transistor semiconductor pattern **42** differs in shape from the data line assembly and the remaining ohmic contact patterns. That is, the source and the drain electrodes **65** and **66** as well as the data line ohmic contact pattern **55** and the drain electrode ohmic contact pattern **56** are separated from each other at the thin film transistor channel portion C, but the thin film transistor semiconductor pattern **42** continuously proceeds at that portion without separation while forming the thin film transistor channel.

A protective layer **70** is formed over the data line assembly while covering the second low resistance conductive layer **600**. The protective layer **70** has contact holes **76**, **78**, and **72** exposing the second low resistance conductive layer **600** over the drain electrodes **66**, the data pads **68**, and the storage capacitor conductive patterns **64**, respectively, and contact holes **74** exposing the first low resistance conductive layer **200** over the gate pads **24** together with the gate insulating layer **30**. According to embodiment of the present invention, the protective layer **70** is preferably formed with silicon nitride or an acryl-based organic insulating material.

Pixel electrodes **82** are formed on the protective layer **70** to receive image signals from the thin film transistors and generate electric fields together with common electrode (not shown) formed at a counter substrate (not shown). The pixel electrodes **82** are formed with a transparent conductive material such as IZO. The pixel electrodes **82** are electrically connected to the drain electrodes **66** through the contact holes **76** via the second low resistance conductive layer **600** to receive image signals. Furthermore, the pixel electrodes **82** are overlapped with the neighboring gate lines **22** and data lines **62** to enhance the opening ratio. Alternatively, the overlapping can be omitted. The pixel electrodes **82** are electrically connected to the storage capacitor conductive patterns **64** through the contact holes **72** via the second low resistance conductive layer **600** to transmit image signals thereto. Subsidiary gate and data pads **84** and **88** are formed over the gate and the data pads **24** and **68**, respectively, such that they are connected to the gate and the data pads **24** and **68** through the contact holes **74** and **78** via the first and second low resistance conductive layers **200** and **600**. The subsidiary gate and data pads **84** and **88** have a role of enhancing the adhesion of the gate and data pads **24** and **68** to external circuits while protecting the gate and data pads **24** and **68**. According to an embodiment of the present invention, the subsidiary gate and data pads **84** and **88** can be selectively omitted.

According to an embodiment of the present invention, in the case of a reflective type liquid crystal display, the pixel electrodes **82** can be formed with an opaque conductive material.

A method of fabricating the liquid crystal display using four mask is described with reference to FIGS. **12A** to **18C** as well as FIGS. **9** to **11**.

Referring to FIGS. **12A** to **12C**, a gate line assembly conductive layer and a first low resistance conductive layer **200** are sequentially deposited onto a substrate **10**, and patterned through photolithography using a first mask (not shown) to

thereby form a gate line assembly overlaid with a first low resistance conductive layer **200**. The gate line assembly includes gate lines **22**, gate pads **24**, gate electrodes **26**, and storage capacitor electrodes **28**.

Thereafter, referring to FIGS. **13A** and **13B**, a gate insulating layer **30** having a thickness of about 1500 Å to about 5000 Å, a semiconductor layer **40** having a thickness of about 500 Å to 2000 Å and a doped amorphous silicon layer **50** having a thickness of about 300 Å to about 600 Å are sequentially deposited onto the substrate through chemical vapor deposition. A data line assembly conductive layer **60** such as aluminum or aluminum alloy, and a second low resistance conductive layer **600** are sequentially deposited on the doped amorphous silicon layer **50** through sputtering. A photoresist film **110** is then coated onto the low resistance conductive layer having a thickness of about 1 μm to about 2 μm.

Referring to FIGS. **14B** and **14C**, the photoresist film **110** is exposed to light through a second mask, and developed to thereby form a photoresist pattern with first and second photoresist pattern portions **114** and **112**. The first photoresist pattern portion **114** placed at a thin film transistor channel area C between source and drain electrodes **65** and **66** is established to have a thickness smaller than that of the second photoresist pattern portion **112** placed at a data line assembly area A. The photoresist film **110** (FIGS. **13A** and **13B**) placed at the remaining area B is all removed. The thickness ratio of the first photoresist pattern portion **114** to the second photoresist pattern portion **112** should be controlled depending upon the processing conditions in the subsequent etching process. According to an embodiment of the present invention, the thickness of the first photoresist pattern portion **114** is preferably formed to be about 1/2 or less of that of the second photoresist pattern portion **112**. For instance, the thickness of the first photoresist pattern portion **114** can be formed to be about 4000 Å or less.

According to an embodiment of the present invention, to differentiate the thickness of the photoresist film **110**, various masks can be used. The masks include a slit, a lattice pattern, or a semitransparent film to control an amount of light transmission.

In the case of using the slit or lattice pattern, it is preferable that the width of slit or lattice should be smaller than the light decomposition capacitance of a light exposure apparatus. In the case of using the semitransparent film, the semitransparent film can have at least two thin films having different light transmission or thickness to control light transmission rate.

When the photoresist film is exposed to light through the mask, the high molecules of the photoresist film **110** entirely exposed to light are completely decomposed. Those of the photoresist film corresponding to the slit pattern or the semitransparent film of the mask are decomposed at some degree, and those of the photoresist film blocked from the mask are not decomposed. When the photoresist film **110** after exposing to the light is developed, the portions where the high molecules are not decomposed are left over while being differentiated in thickness depending upon the degree of molecular decomposition. In case the light exposing time is long, all the molecules of the photoresist film can be decomposed.

Alternatively, the first photoresist pattern portion **114** having a relatively thin thickness can be formed using a photoresist film capable of reflow. The photoresist film is exposed to light through a usual mask with a light transmission portion and a light interception portion. The light-exposed photoresist film is then developed, and made the reflow such that the film portion is partially flown to the non-film area.

The first photoresist pattern portion **114**, the underlying second low resistance conductive layer **600**, the data line assembly conductive layer **60**, the doped amorphous silicon layer **50**, and the semiconductor layer **40** are then etched. At this time, the data line assembly conductive layer **60** and the underlying layers are left over at the data line assembly area A, only the semiconductor layer **40** is left over at the channel area C, and the data line assembly conductive layer **60**, the doped amorphous silicon layer **50**, and the semiconductor layer **40** are all removed at the remaining area B while exposing the underlying gate insulating layer **30**.

First, referring to FIGS. **15A** and **15B**, the second low resistance conductive layer **600** and the data line assembly conductive layer **60** exposed at the B area are removed while exposing the underlying doped amorphous silicon layer **50**. According to an embodiment of the present invention, dry etching or wet etching can be used when the second low resistance conductive layer **600** and the data line assembly conductive layer **60** are etched. During the etching process, the photoresist pattern portions **112** and **114** are not etched. However, when the data line assembly conductive layer **60** is formed with chrome (Cr), wet etching is preferably used. According to an embodiment of the present invention, wet etching solution including CeNH_3 is preferably used for etching the Cr-based conductive layer **60**. For the dry etching for the Mo or MoW-based conductive layer **60**, a mixture gas such as CF_4 and HCl or CF_4 and O_2 is preferably used as an etching gas. In the latter case, the etching rates thereof with respect to the photoresist film are nearly the same.

Consequently, as shown in FIGS. **15A** and **15B**, a source/drain conductive pattern **67**, a storage capacitor conductive pattern **64** and a second low resistance conductive layer **600** at the channel area C and the data line assembly area A are left over, whereas a conductive layer **60** and a second low resistance conductive layer **600** at the B area are all removed while exposing the underlying doped amorphous silicon layer **50**. At this time, the conductive patterns **67** and **64** have a similar shape as the data line assembly except that source and the drain electrodes **65** and **66** are not yet separated from each other. Furthermore, when the dry etching is performed, the photoresist pattern portions **112** and **114** are also removed at some degree.

Referring to FIGS. **16A** and **16B**, the doped amorphous silicon layer **50** (FIGS. **15A** and **15B**) exposed at the B area and the underlying semiconductor layer **40** are simultaneously removed through dry etching together with the first photoresist pattern portion **114**. At this time, the photoresist pattern portions **112** and **114**, the doped amorphous silicon layer **50**, and the semiconductor layer **40** (the ohmic contact layer and the semiconductor layer having no etching selectivity) are simultaneously etched, whereas the gate insulating layer **30** is not etched. According to an embodiment of the present invention, the etching rates with respect to the photoresist patterns **112** and **114** and the semiconductor layer **40** are preferably similar. When a mixture gas of SF_6 and HCl or SF_6 and O_2 is used as the etching gas, it is possible to etch the photoresist pattern **112** (or **114**) and the semiconductor layer **40** by substantially the same thickness. When the etching rates with respect to the photoresist patterns **112** and **114** and the semiconductor layer **40** are the same or substantially the same, the thickness of the first photoresist pattern **114** is preferably the same as or less than the sum in thickness of the semiconductor layer **40** and the doped amorphous silicon layer **50**.

Consequently, as shown in FIGS. **16A** and **16B**, the first photoresist pattern portion **114** at the channel area C is removed while exposing the second low resistance conduc-

tive layer **600** over the source/drain conductive pattern **67**. The doped amorphous silicon layer **50** and the semiconductor layer **40** at the B area are removed while exposing the underlying gate insulating layer **30**. Meanwhile, as the second photoresist pattern portion **112** at the data line assembly area A is also etched, the thickness thereof becomes thinner. Furthermore, in this process, semiconductor patterns **42** and **48** are formed. Reference numeral **57** indicates doped amorphous silicon layer pattern under the source/drain conductive pattern **67** and the storage capacitor conductive pattern **64**, respectively.

The photoresist residue on the second low resistance conductive layer **600** over the source/drain conductive pattern **67** at the channel area C is removed through ashing.

Referring to FIGS. **17A** and **17B**, the second low resistance conductive layer **600**, the source/drain conductive pattern **67** and the doped amorphous silicon layer pattern **57** are removed through etching using second photoresist patterns **112** as masks. According to an embodiment of the present invention, dry etching is performed with respect to both of the source/drain conductive pattern **67** and the doped amorphous silicon layer pattern **57**. It is also possible that wet etching is performed with respect to the source/drain conductive pattern **67**, and dry etching with respect to the doped amorphous silicon layer pattern **57**. In the former case, it is preferable that the etching selectivity of the source/drain conductive pattern **67** to the doped amorphous silicon layer pattern **57** is high. In case the etching selectivity is not great, it becomes difficult to find the end point of etching and to control the thickness of the semiconductor pattern **42** left over at the channel area. For the dry etching, a mixture gas of SF_6 and O_2 is preferably used as the etching gas for the source/drain conductive pattern **67**. A mixture gas of CF_4 and HCl or CF_4 and O_2 can be preferably used as the etching gas for the doped amorphous silicon layer pattern **57** and the semiconductor pattern **42**. When the mixture gas of CF_4 and O_2 is used for the etching gas, the semiconductor pattern **42** can have a uniform thickness. At this time, as shown in FIG. **17B**, the semiconductor pattern **42** is partially removed through the etching, and the second photoresist pattern portions **112** is also etched by a predetermined thickness. The etching should be performed in condition that the gate insulating layer **30** is not etched. It is preferable that the thickness of the second photoresist pattern **112** is so thick as to not expose the underlying data line assembly through the etching.

As a result, source electrodes **65** and the drain electrodes **66** are formed to separate from each other, and the data line assembly and the underlying ohmic contact patterns **55**, **56**, and **58** are completed.

Finally, the second photoresist pattern portion **112** remained at the data line assembly area A is removed. The removal of the second photoresist pattern portion **112** can be performed after the source/drain conductive pattern **67** at the channel area C is removed before the removal of the underlying doped amorphous silicon layer pattern **57**.

After the data line assembly is formed while being overlaid with the second low resistance conductive layer **600**, as shown in FIGS. **18A** to **18C**, a protective layer **70** having a thickness of about 3000 Å or more is formed through depositing a silicon nitride layer by way of chemical vapor deposition (CVD) or spin-coating with an organic insulating film. The protective layer **70** is etched together with the gate insulating layer **30** using a third mask to thereby form contact holes **76**, **74**, **78**, and **72** exposing the first and second low resistance conductive layers **200** and **600** over the drain electrodes **66**, the gate pads **24**, the data pads **68**, and the storage capacitor conductive patterns **64**, respectively.

Finally, referring back to FIGS. 9 to 11, an IZO-based layer having a thickness of about 400 Å to about 500 Å is deposited on the protective layer 70 having the contact holes 76, 74, 78, and 72, and etched using a fourth mask to thereby form pixel electrodes 82, and subsidiary gate and data pads 84 and 88. 5 The pixel electrodes 82 are electrically connected to the drain electrodes 66 and the storage capacitor conductive patterns 64 through the contact holes 76 and 72, respectively, via the second low resistance conductive layer 600. The subsidiary gate and data pads 84 and 88 are connected to the gate and the data pads 24 and 68 through the contact holes 74 and 78 via the first and second low resistance conductive layers 200 and 600, respectively.

In this preferred embodiment, the data line assembly, and the underlying ohmic contact patterns 55, 56, and 58 and semiconductor patterns 42 and 48 are formed using one mask while separating the source and the drain electrodes 65 and 66 from each other, thereby simplifying the processing steps.

As described above, a low resistance conductive layer including nitrogen and aluminum is continuously deposited (without vacuum break) onto a wiring line assembly conductive layer including aluminum, thereby minimizing or avoiding the possibility of forming a high resistance oxide layer such as an aluminum oxide layer. In this way, the processing conditions can be uniformly designed while minimizing the contact resistance at a contact area, thereby ensuring reliability at the contact area. Furthermore, the wiring line assembly is formed with a low resistance material such as aluminum and aluminum alloy, thereby enhancing the performance characteristics of the wide-screened high definition display device.

While the present invention has been described in detail with reference to the preferred embodiments, those skilled in the art will appreciate that various modifications and substitutions can be made thereto without departing from the spirit and scope of the present invention as set forth in the appended claims.

What is claimed is:

1. A liquid crystal display comprising:
 - a substrate;
 - a first signal line assembly formed over the substrate, wherein the first signal line assembly comprises a first signal line, a first pad connected to the first signal line, a gate electrode connected to the first signal line, and a conductive electrode;
 - a first nitrogen containing layer formed on the first signal line, the first pad, the gate electrode and the conductive electrode of the first signal line assembly to reduce formation of a high resistance oxide layer on the first signal line assembly;
 - a second signal line assembly formed with a lower layer and an upper layer comprising a second signal line intersecting and insulated from the first signal line, a second pad, a source electrode, a drain electrode and a conductive pattern;
 - a second nitrogen containing layer formed on the second signal line, the second pad, the source electrode, the drain electrode and the conductive pattern of the second signal line assembly, wherein the second nitrogen containing layer reduces formation of a high resistance oxide layer on the second signal line assembly;
 - a protective layer formed over the second signal line assembly;
 - a first contact hole formed in the protective layer exposing the drain electrode; and

a pixel electrode formed over the protective layer, the pixel electrode being electrically connected to the drain electrode through the first contact hole,

wherein the first and second nitrogen containing layers comprise one of an aluminum nitride layer, an aluminum alloy nitride layer, and an aluminum/neodymium alloy nitride layer.

2. The liquid crystal display of claim 1, wherein the pixel electrode is formed of indium zinc oxide.

3. A liquid crystal display comprising:
 - a substrate;
 - a first signal line assembly formed over the substrate, wherein the first signal line assembly comprises a first signal line, a first pad connected to the first signal line, a gate electrode connected to the first signal line, and a conductive electrode;
 - a first nitrogen containing layer formed on the first signal line, the first pad, the gate electrode and the conductive electrode of the first signal line assembly to reduce formation of a high resistance oxide layer on the first signal line assembly;
 - a second signal line assembly formed with a lower layer and an upper layer comprising a second signal line intersecting and insulated from the first signal line, a second pad, a source electrode, a drain electrode and a conductive pattern;
 - a second nitrogen containing layer formed on the second signal line, the second pad, the source electrode, the drain electrode and the conductive pattern of the second signal line assembly, wherein the second nitrogen containing layer reduces formation of a high resistance oxide layer on the second signal line assembly; and
 - a pixel electrode formed over a protective layer, the pixel electrode being electrically connected to the second signal line assembly,
- wherein the first and second nitrogen containing layers comprise one of an aluminum nitride layer, an aluminum alloy nitride layer, and an aluminum/neodymium alloy nitride layer.

4. The liquid crystal display of claim 1, further comprising: a second contact hole formed in the protective layer exposing the first pad; and

a third contact hole formed in the protective layer exposing the second pad;

wherein the first pad is electrically connected to a third pad through the second contact hole and the second pad is electrically connected to a fourth pad through the third contact hole.

5. A thin film transistor array panel, comprising:
 - a substrate;
 - a gate line assembly formed on the substrate, the gate line assembly including a gate line, gate pad, gate electrode and conductive electrode;
 - a first low resistance conductive layer formed on the gate line, gate pad, gate electrode and conductive electrode;
 - a gate insulating layer formed on the first low resistance conductive layer and the substrate;
 - a semiconductor pattern formed on the gate insulating layer;
 - an ohmic contact pattern formed on the semiconductor pattern;
 - a data line assembly formed on the ohmic contact pattern, the data line assembly including a data line, data pad, source electrode, drain electrode and conductive pattern;
 - a second low resistance conductive layer formed on the data line, data pad, source electrode, drain electrode and conductive pattern;

15

a protective layer formed on the second low resistance conductive layer and the gate insulating layer, the protective layer having a first contact hole exposing a portion of the second low resistance conductive layer on the conductive pattern and a second contact hole exposing a portion of the second low resistance conductive layer on the drain electrode; and

a pixel electrode formed on the protective layer, the pixel electrode electrically connected to the drain electrode through the second contact hole and the conductive pattern through the first contact hole.

6. A thin film transistor array panel, comprising:

a substrate;

a gate line assembly formed on the substrate, the gate line assembly including a gate pad, a gate electrode, a gate line and a conductive electrode;

a first low resistance conductive layer including aluminum nitride, aluminum alloy nitride or aluminum/neodymium alloy nitride being formed on the gate pad, the gate electrode, the gate line and the conductive electrode;

a gate insulating layer formed on the first low resistance conductive layer and the substrate;

a data line assembly formed on the gate insulating layer, the data line assembly including a data line, a data pad, a source electrode, a drain electrode and a conductive pattern;

a protective layer formed on the data line assembly and the gate insulating layer, the protective layer having a first contact hole exposing the drain electrode; and

16

a pixel electrode formed on the protective layer, the pixel electrode being electrically connected to the drain electrode through the first contact hole.

7. The thin film transistor array panel of claim 6, further comprising:

a second low resistance conductive layer including aluminum nitride, aluminum alloy nitride or aluminum/neodymium alloy nitride being formed on the data line, the data pad, the source electrode, the drain electrode and the conductive pattern.

8. The thin film transistor array panel of claim 7, wherein the first contact hole is formed over the second low resistance conductive layer formed on the drain electrode, and wherein the second low resistance conductive layer formed on the drain electrode reduces a contact resistance between the drain electrode and the pixel electrode connected thereto.

9. The thin film transistor array panel of claim 8, wherein the protective layer further comprises a second contact hole formed over the gate pad and a third contact hole formed over the data pad,

wherein a subsidiary gate pad is connected to the gate pad through the second contact hole and a subsidiary data pad is connected to the data pad through the third contact hole, and

wherein the first low resistance conductive layer reduces a contact resistance between the subsidiary gate pad and the gate pad and the second low resistance conductive layer reduces a contact resistance between the subsidiary data pad and the data pad.

* * * * *

专利名称(译)	用于液晶显示器的薄膜晶体管阵列面板及其制造方法		
公开(公告)号	US7599037	公开(公告)日	2009-10-06
申请号	US10/895866	申请日	2004-07-21
[标]申请(专利权)人(译)	宋JEAN HO JEONG常OH		
申请(专利权)人(译)	宋JEAN-HO JEONG CHANG-OH		
当前申请(专利权)人(译)	三星DISPLAY CO. , LTD.		
[标]发明人	SONG JEAN HO JEONG CHANG OH		
发明人	SONG, JEAN-HO JEONG, CHANG-OH		
IPC分类号	G02F1/1343 G02F1/1368 G02F1/136 G02F1/1362 H01L21/3205 H01L21/768 H01L23/52 H01L29/786		
CPC分类号	G02F1/13458 G02F1/136286 G02F2001/13629 G02F1/136227		
审查员(译)	KIM , RICHARD H		
优先权	1020010049963 2001-08-20 KR		
其他公开文献	US20050041187A1		
外部链接	Espacenet USPTO		

摘要(译)

提供一种制造用于液晶显示器的薄膜晶体管阵列面板的方法。栅极线组件形成在绝缘基板上。栅极线组件包括连接到栅极线的栅极线和栅极电极。在具有栅极线组件的绝缘基板上形成栅极绝缘层。在栅极绝缘层上形成半导体层。形成数据线组件，数据线组件包括跨越栅极线的数据线，连接到数据线并与栅电极相邻放置的源电极，以及相对于栅电极与源电极相对放置的漏电极。将保护层沉积在具有数据线组件的绝缘基板上。图案化保护层以形成暴露漏电极的第一接触孔。像素电极形成在保护层上，使得像素电极电连接到漏电极，其中栅线组件和数据线组件中的一个还包括低电阻导电层。

