



US 20090310046A1

(19) **United States**

(12) **Patent Application Publication**  
Su

(10) **Pub. No.: US 2009/0310046 A1**  
(43) **Pub. Date: Dec. 17, 2009**

(54) **MULTI-DOMAIN VERTICAL ALIGNMENT LIQUID CRYSTAL DISPLAY PANEL AND DRIVING METHOD THEREOF**

(30) **Foreign Application Priority Data**

Apr. 25, 2005 (TW) ..... 94113064

**Publication Classification**

(75) Inventor: **Jenn-Jia Su, Chiayi County (TW)**

(51) **Int. Cl.**  
**G02F 1/1343** (2006.01)  
**G02F 1/133** (2006.01)

Correspondence Address:  
**JIANQ CHYUN INTELLECTUAL PROPERTY OFFICE**  
**7 FLOOR-1, NO. 100, ROOSEVELT ROAD, SECTION 2**  
**TAIPEI 100 (TW)**

(52) **U.S. Cl.** ..... **349/33; 349/139**

(57) **ABSTRACT**

An MVA-LCD panel, including an active component array substrate, an opposite substrate and a liquid crystal layer disposed between is provided. The active component array substrate includes scan lines, data lines, control lines and pixel units. Each of the pixel units includes an active component, a domain division electrode (DDE) and a pixel electrode. The active component is electrically connected with the corresponding scan line and the corresponding data line, the DDE being electrically connected with the corresponding control line, the pixel electrode being electrically connected with the active component. The pixel electrode has first slits, and the first DDE are disposed under the first slits. The opposite substrate has a common electrode layer facing toward the active component array substrate. The common electrode layer includes second slits and at least a part of the second slits is disposed over the first domain division electrode.

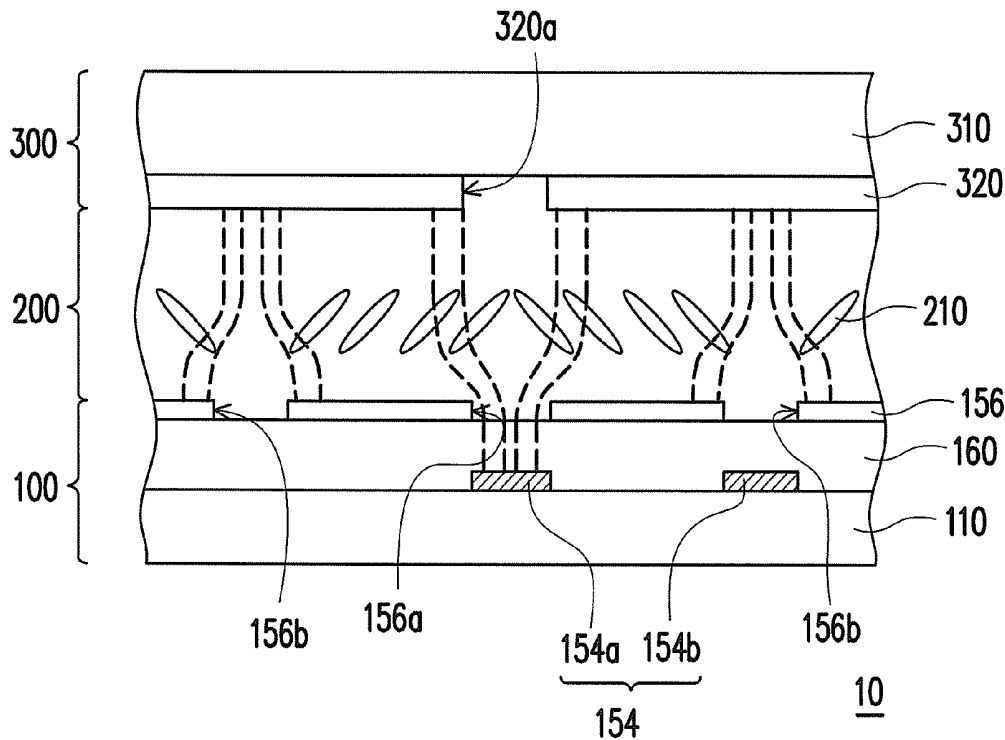
(73) Assignee: **Au Optronics Corporation, Hsinchu (TW)**

(21) Appl. No.: **12/546,691**

(22) Filed: **Aug. 25, 2009**

**Related U.S. Application Data**

(62) Division of application No. 11/161,647, filed on Aug. 11, 2005, now Pat. No. 7,605,896.



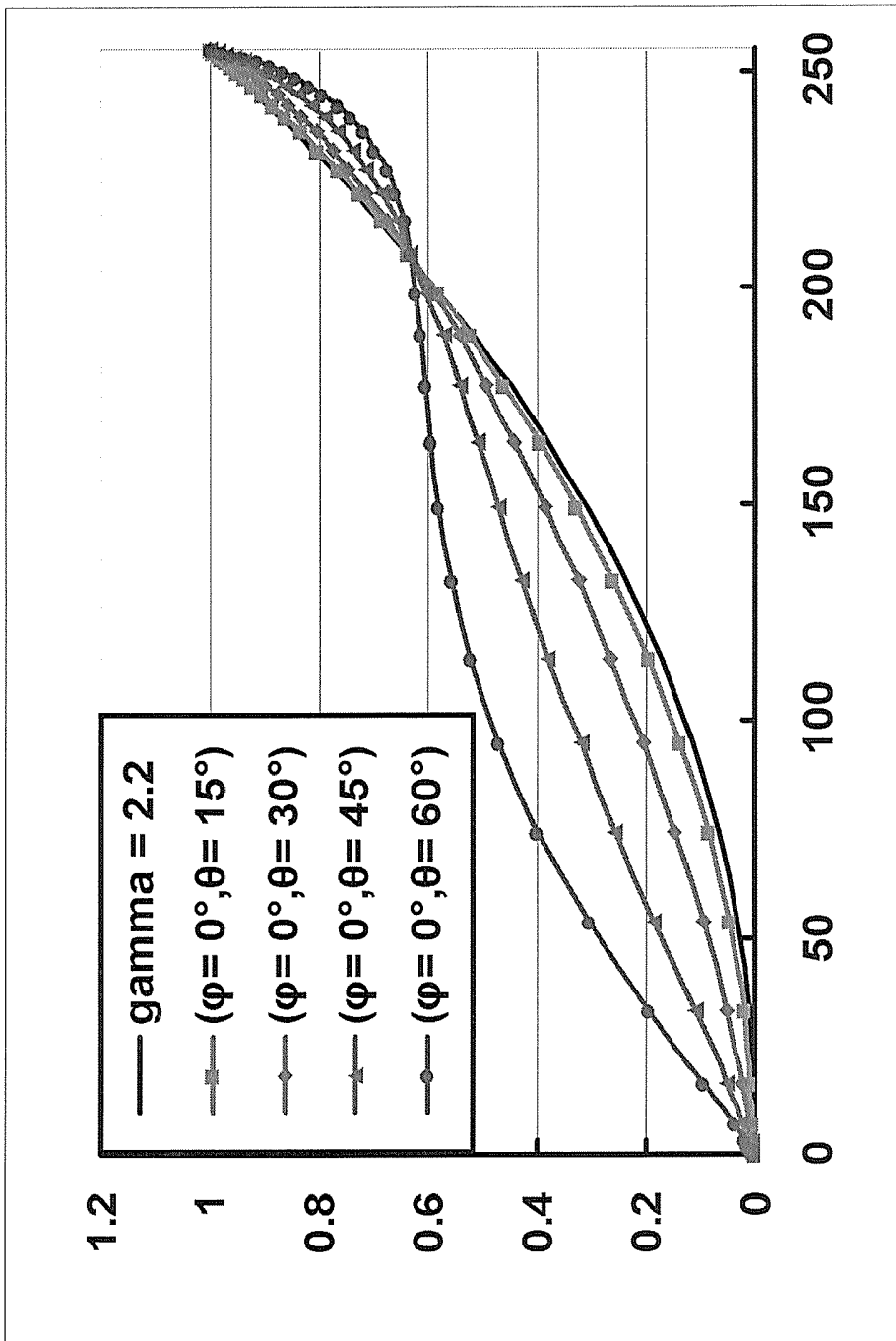


FIG. 1 (PRIOR ART)

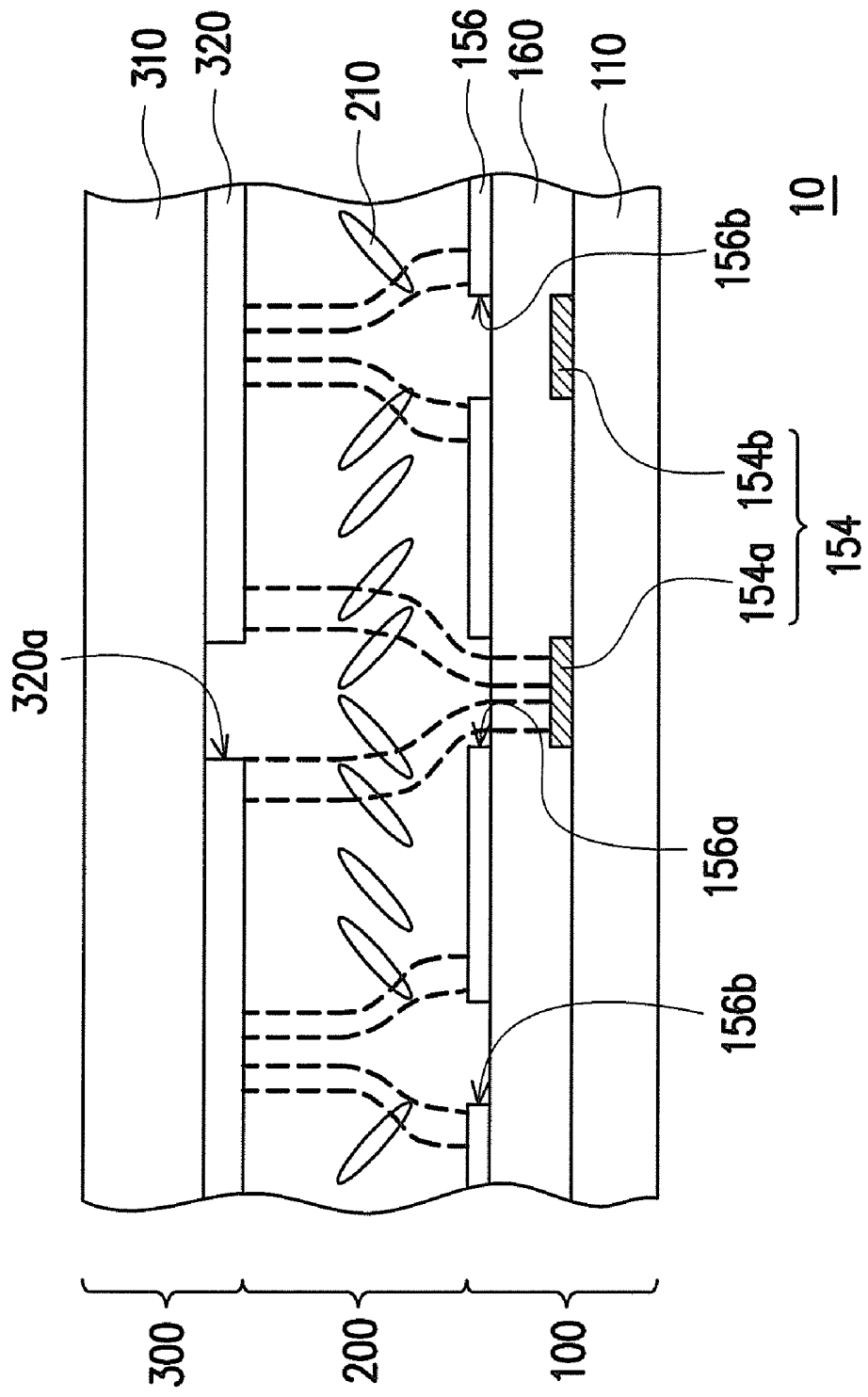


FIG. 2A

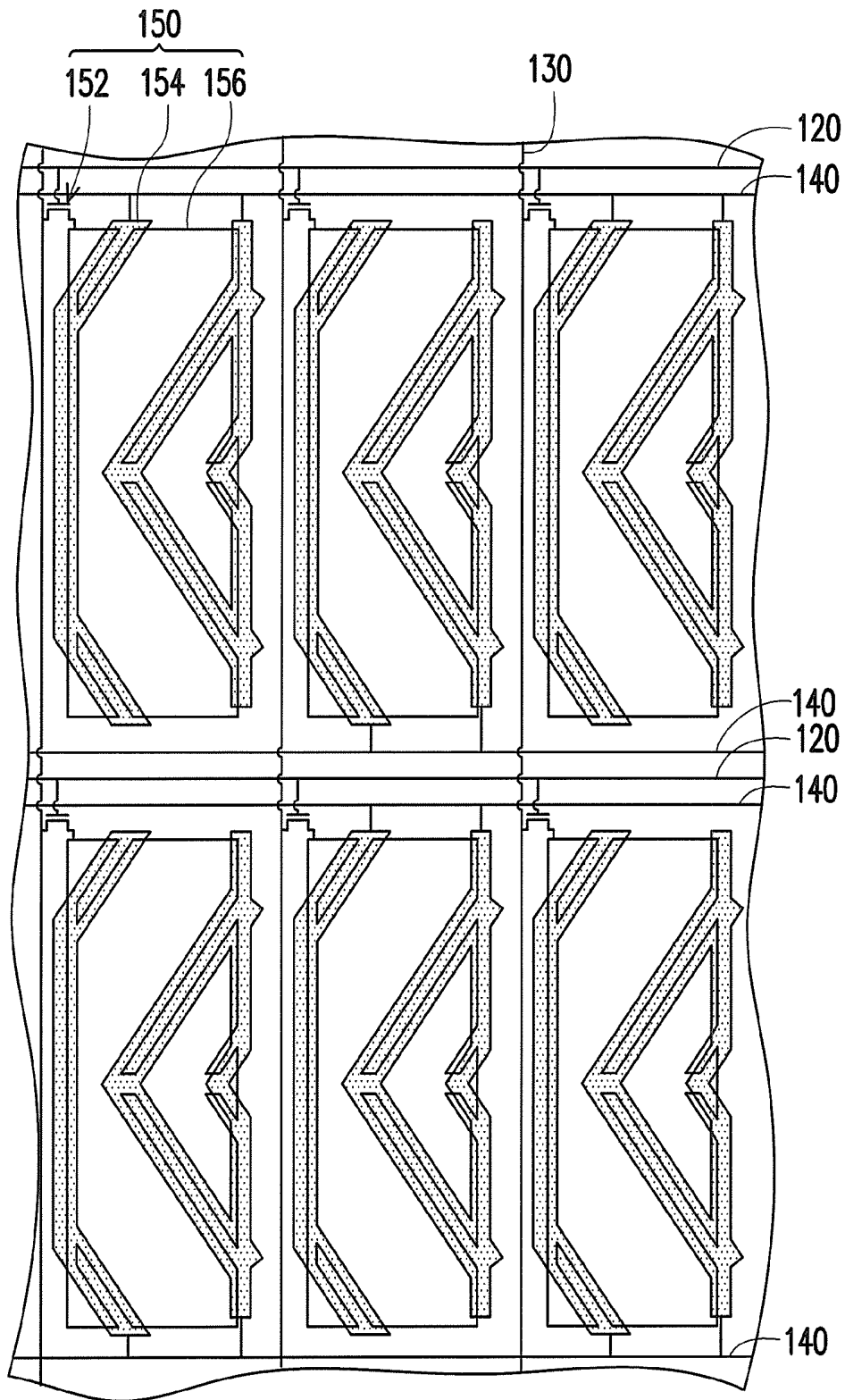


FIG. 2B

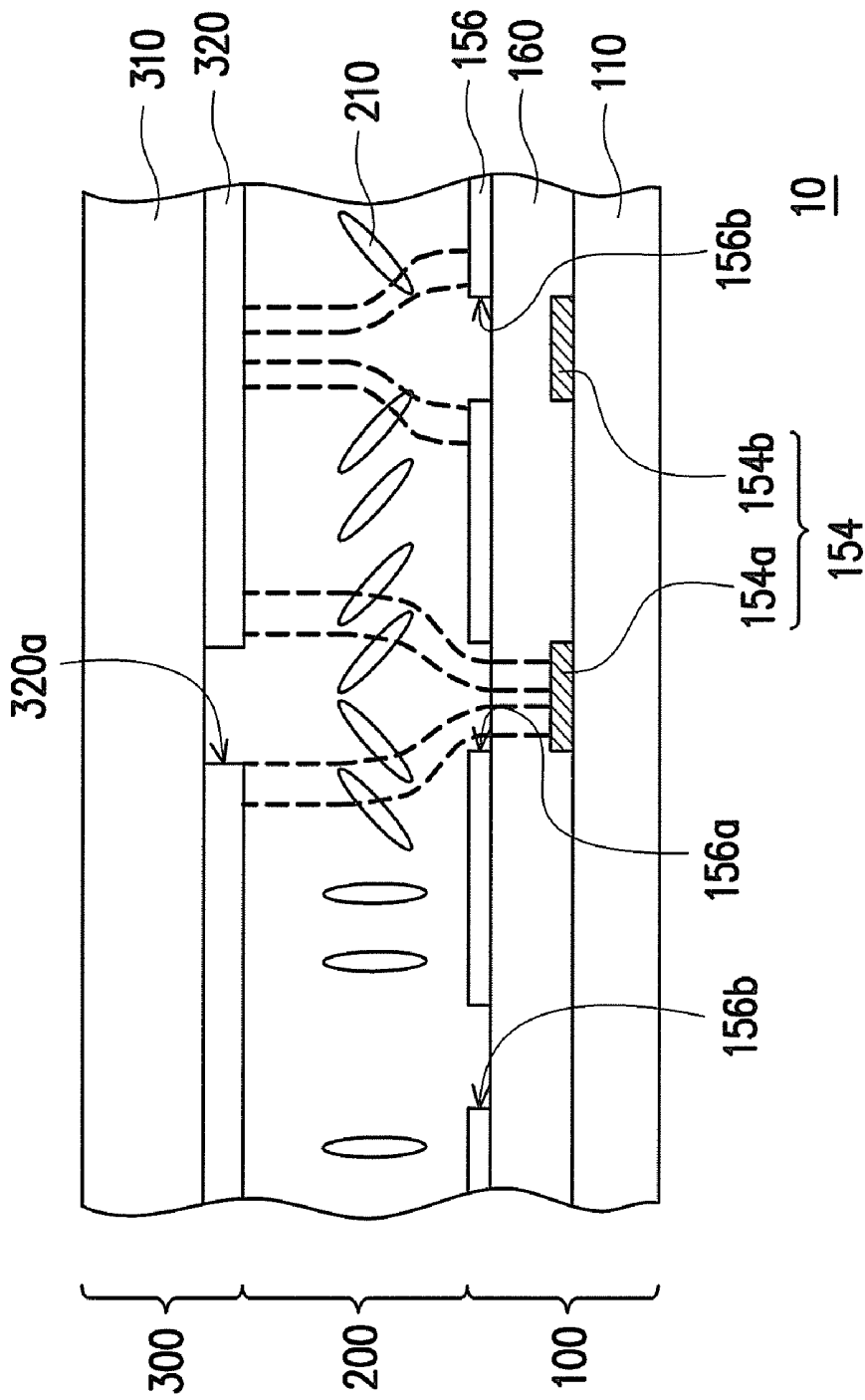


FIG. 3A

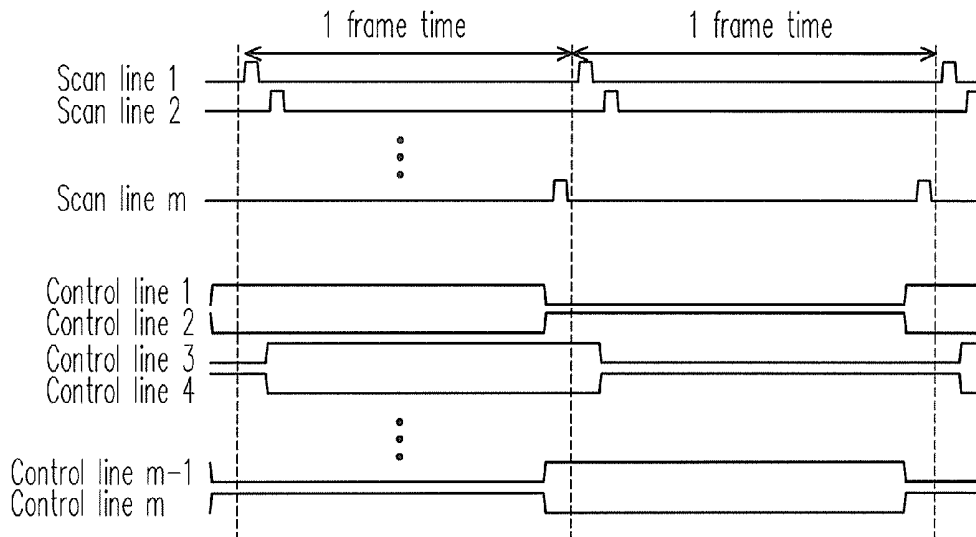


FIG. 3B

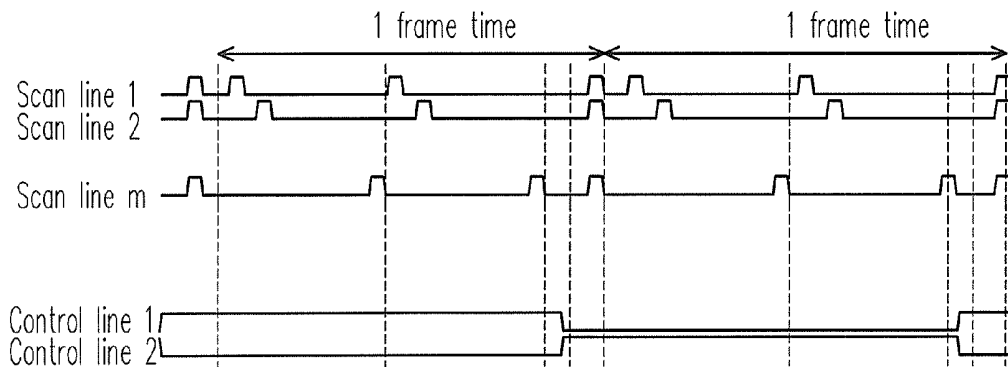


FIG. 4

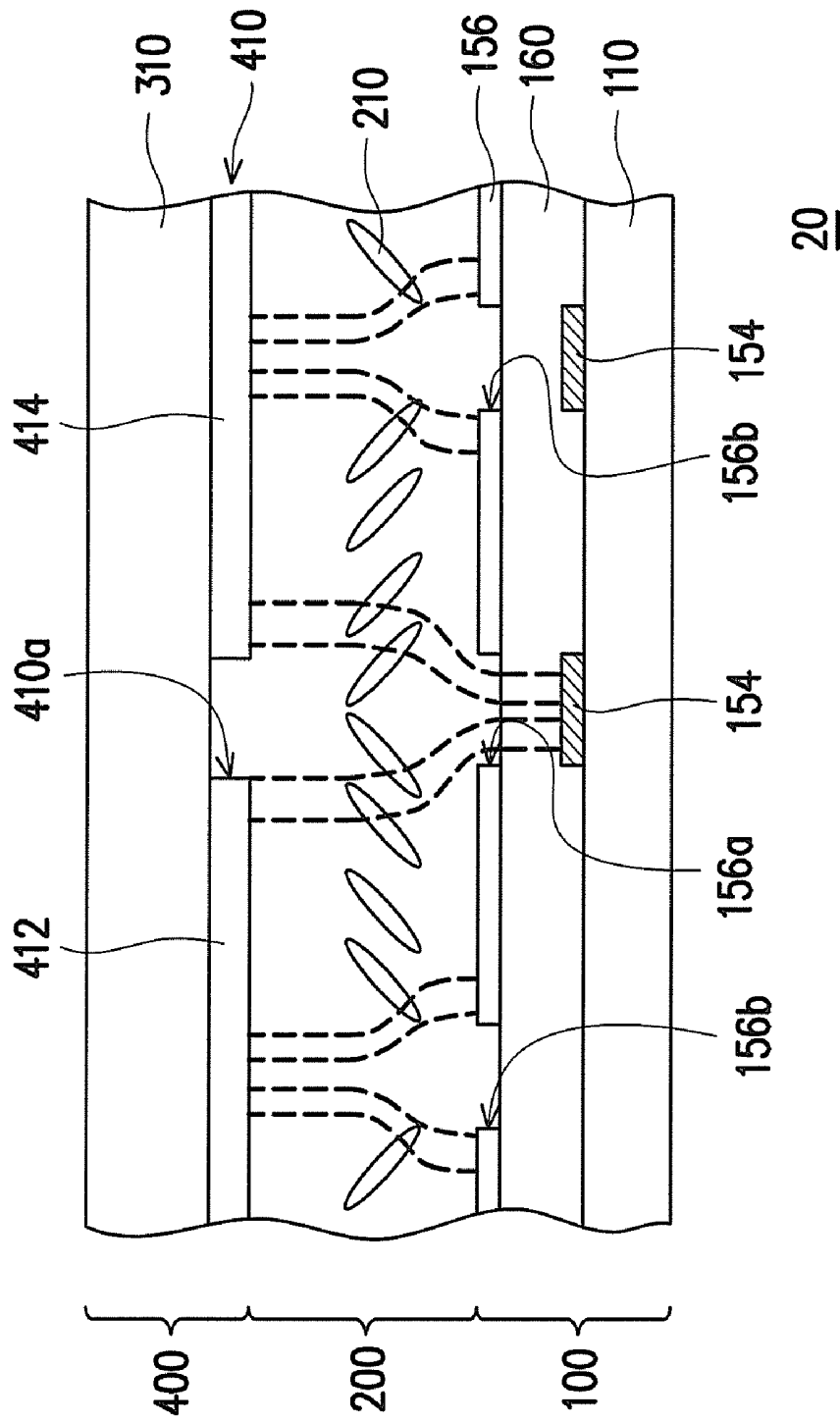


FIG. 5A

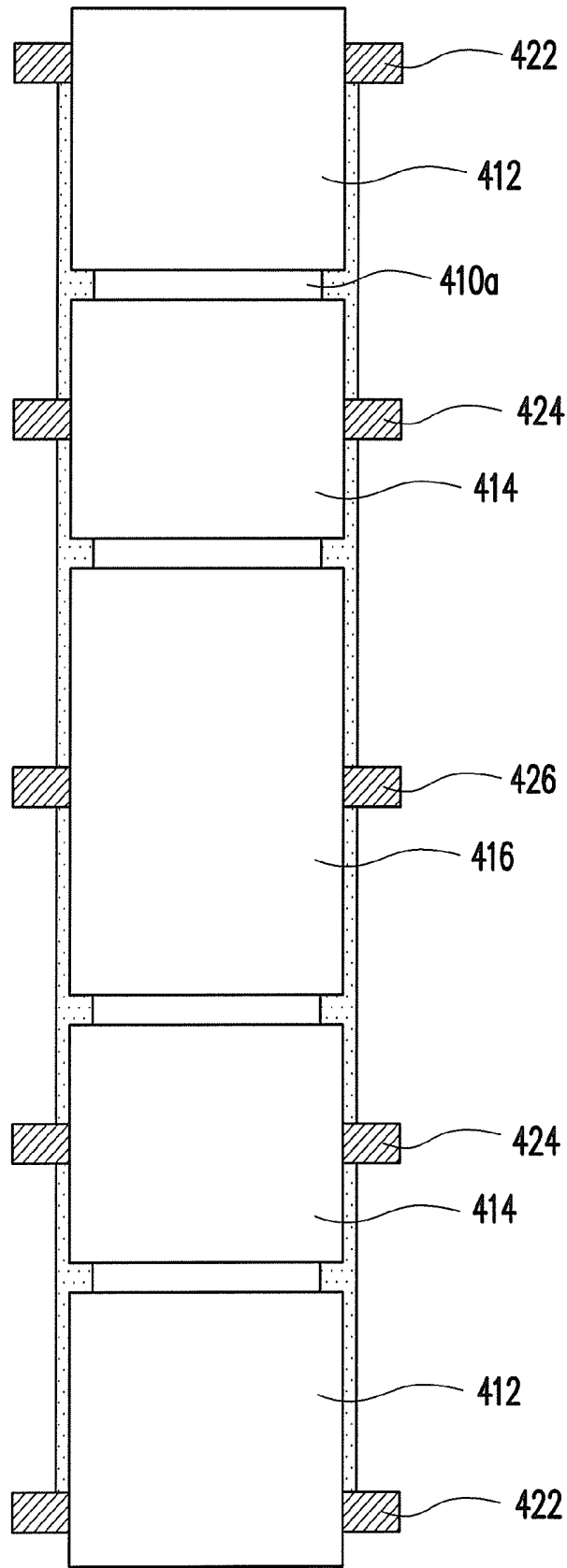


FIG. 5B

400

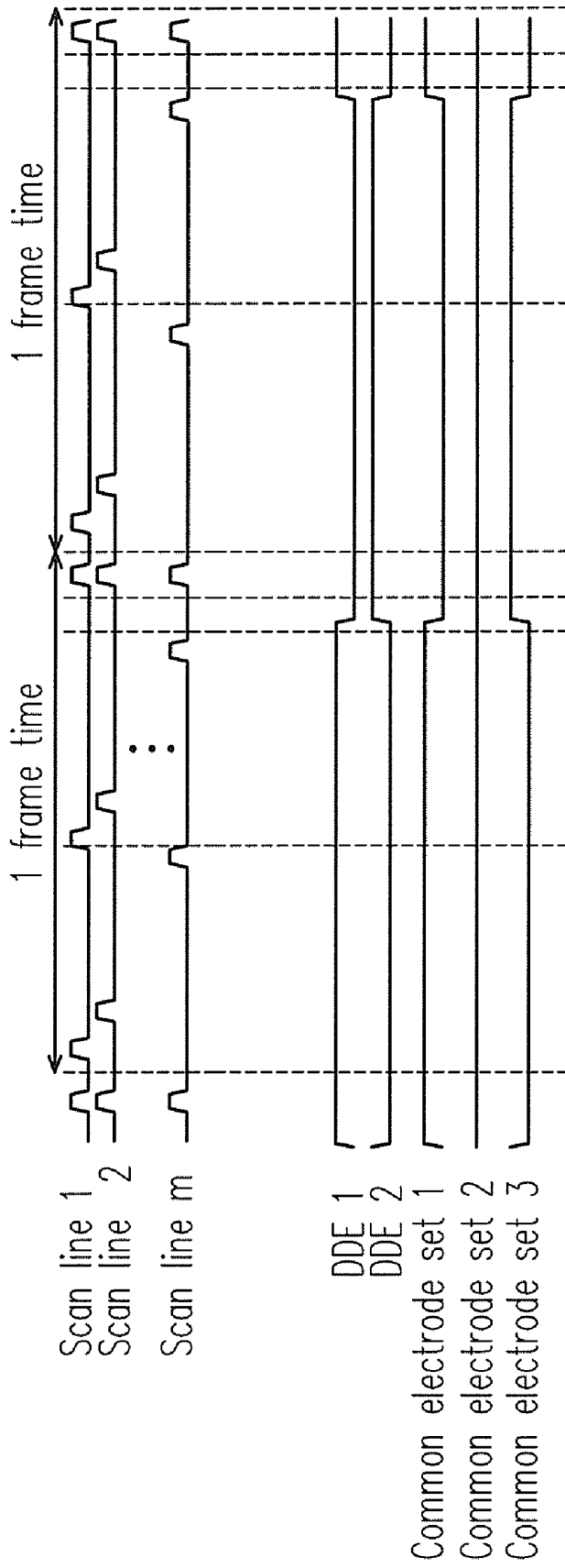


FIG. 6

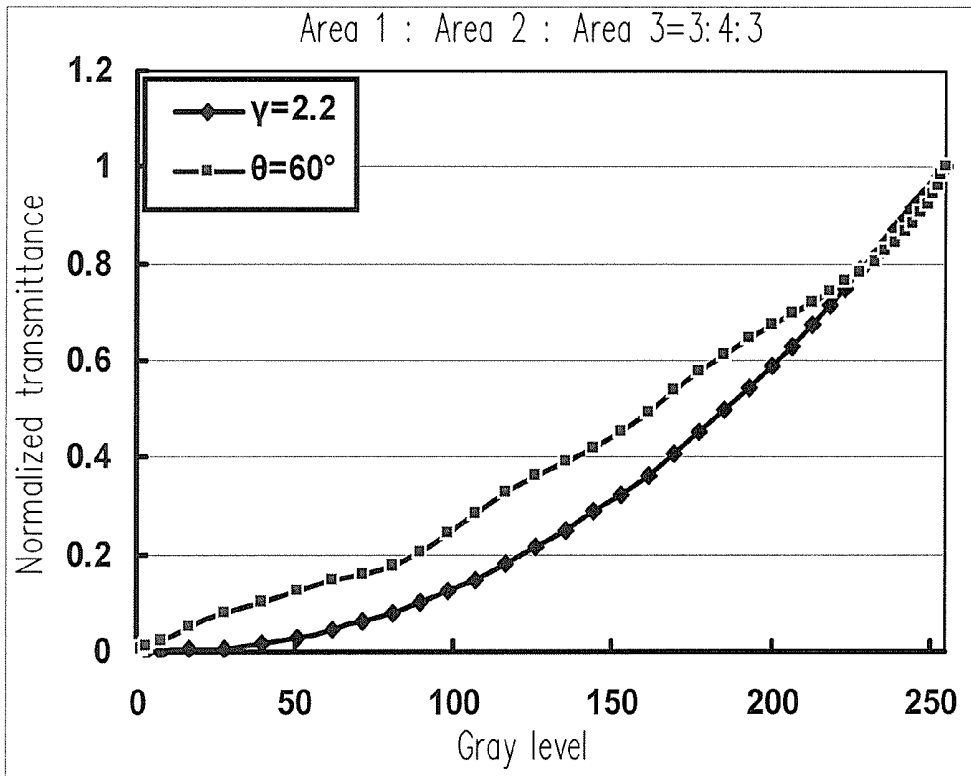


FIG. 7A

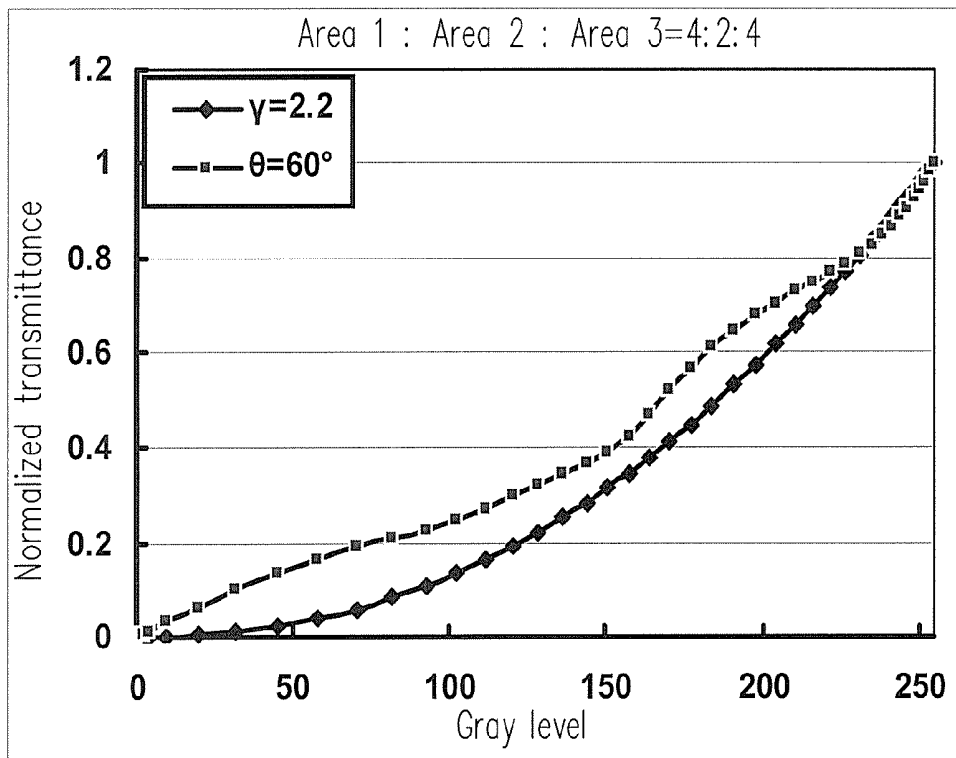


FIG. 7B

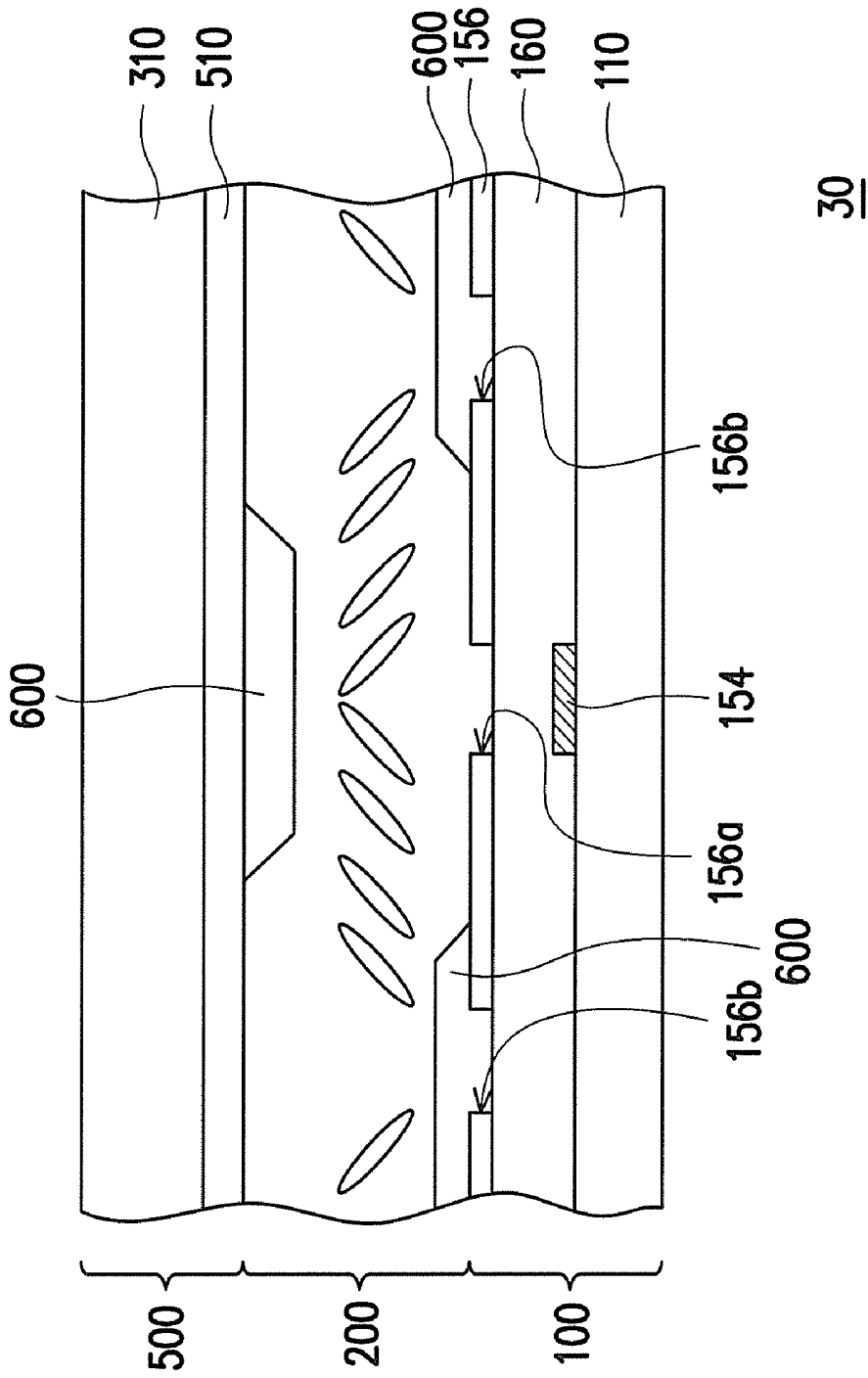


FIG. 8

## MULTI-DOMAIN VERTICAL ALIGNMENT LIQUID CRYSTAL DISPLAY PANEL AND DRIVING METHOD THEREOF

### CROSS-REFERENCE TO RELATED APPLICATION

**[0001]** This application is a divisional of and claims the priority benefit of an application Ser. No. 11/161,647, filed on Aug. 11, 2005, now allowed, which claims the priority benefit of Taiwan application serial no. 94113064, filed on Apr. 25, 2005. The entirety of each of the above-mentioned patent applications is hereby incorporated by reference herein and made a part of this specification.

### BACKGROUND OF THE INVENTION

**[0002]** 1. Field of the Invention

**[0003]** The present invention relates to a liquid crystal display panel, and particularly to a multi-domain vertical alignment liquid crystal display (MVA-LCD) panel and a driving method thereof.

**[0004]** 2. Description of Related Art

**[0005]** Nowadays, a commercial thin film transistor liquid crystal display (TFT-LCD) is required to have the characteristics of high contrast ratio, no gray scale inversion, little color shift, high luminance, high color richness, high color saturation, rapid response and wide viewing angle. The conventional displays which can match the demand for wide viewing angle include twisted nematic (TN) LCD displays with wide viewing films, in-plane switching (IPS) LCD displays, fringe field switching LCD displays and multi-domain vertical alignment (MVA) TFT-LCD displays.

**[0006]** A conventional MVA-LCD panel can match the demand for wide viewing angle because the alignment protrusions or slits of which formed on the color filter substrate or the TFT array substrate make the liquid crystal molecules multi-directionally distributed, and thus obtain several different domains.

**[0007]** FIG. 1 is a diagram for schematically illustrating the relation between the normalized transmittance and the gray level of an MVA-LCD panel. Referring to FIG. 1, the horizontal coordinate represents the gray level and the vertical coordinate represents the normalized transmittance. It can be known from FIG. 1, although a conventional MVA-LCD panel can match the demand for wide viewing angle, the curvature of the transmittance-level curve varies in accordance with the change of the viewing angle. In other words, as the viewing angle changes, the conventional MVA-LCD panel may display a luminance change accordingly, which may further cause a color shift and a color washout. Also, the employment of alignment protrusions may cause a light leakage, and using slits may lead to a requirement for longer response time.

### SUMMARY OF THE INVENTION

**[0008]** In view of the above, an object of the present invention is to provide an MVA-LCD panel requiring shorter response time.

**[0009]** And another object of the present invention is to provide a driving method for driving an MVA-LCD panel.

**[0010]** Also, a further object of the present invention is to provide an MVA-LCD panel having better displaying quality.

**[0011]** According to the above and other objects, the present invention provides an MVA-LCD panel including an

active component array substrate, an opposite substrate and a liquid crystal layer. Wherein, the liquid crystal layer is disposed between the active component array substrate and the opposite substrate. The active component array substrate includes a plurality of scan lines, a plurality of data lines, a plurality of control lines and a plurality of pixel units. Each of the pixel units is controlled by the corresponding scan line, data line and control line. Each of the pixel units includes an active component, a first domain division electrode (DDE) and a pixel electrode. The active component is electrically connected with the corresponding scan line and the corresponding data line. The first DDE is electrically connected with the corresponding control line; the pixel electrode is electrically connected with the active component. A pixel electrode has a plurality of first slits, the first DDE being disposed under the first slits. The opposite substrate has a common electrode layer facing toward the active component array substrate; the common electrode layer has a plurality of second slits and at least a part of the second slits is disposed over the first domain division electrode (DDE).

**[0012]** Each pixel electrode of the above-described pixel units further includes a plurality of third slits, and each of the third slits being distributed between two adjacent first slits. Moreover, each of the pixel units further includes a second DDE disposed under a part of the third slits. The second DDE is electrically connected with a corresponding control line.

**[0013]** The above-described common electrode layer includes a plurality of common electrode sets being insulated from each other. Each of the common electrode sets includes a plurality of common electrodes, and each of the pixel units is corresponding to at least one of the common electrodes of the common electrode sets.

**[0014]** According to the above and other objects, the present invention provides a driving method being adapted for the foregoing MVA-LCD panel. The driving method includes the steps of: inputting a control voltage to a DDE to pre-tilt the liquid crystal molecules of the liquid crystal layer; after a predetermined time of inputting the control voltage, inputting a data signal to the pixel unit.

**[0015]** The values of the foregoing control voltages may be periodically changed. Also, the absolute value of the voltage difference between the control voltage and the common electrode layer is larger than the absolute value of the voltage difference between the pixel electrode and the common electrode layer.

**[0016]** According to the above and other objects, the present invention provides a driving method being adapted for the foregoing MVA-LCD panel. The driving method includes the steps of: inputting a control voltage to a DDE to pre-tilt the liquid crystal molecules of the liquid crystal layer; inputting a plurality of common electrode voltages respectively to the corresponding common electrode sets; after a predetermined time of inputting the control voltage, inputting a data signal to the pixel unit.

**[0017]** The values of the foregoing control voltages may be periodically changed. In addition, the values of the foregoing common electrode voltages may be periodically changed. Further, the control voltages and the common electrode voltages can also be respectively inputted to the domain division electrodes and the corresponding common electrode sets at the same time. Also, the absolute value of the voltage difference between the control voltage and the common electrode layer is larger than the absolute value of the voltage difference

between the pixel electrode and the common electrode layer. The differences among the common electrode voltages can be ranged from 0.1V to 5V

[0018] According to the above and other objects, the present invention provides an MVA-LCD panel including an active component array substrate, an opposite substrate and a liquid crystal layer. The liquid crystal layer is disposed between the active component array substrate and the opposite substrate. The active component array substrate includes a plurality of scan lines, a plurality of data lines, and a plurality of pixel units. Each of the pixel units is controlled by the corresponding scan line and data line. Each of the pixel units includes an active component and a pixel electrode, the active component is electrically connected with the corresponding scan line and the corresponding data line. The pixel electrode is electrically connected with the active component. The opposite substrate has a common electrode layer facing toward the active component array substrate, and the common electrode layer includes a plurality of common electrode sets being insulated from each other. Each of the common electrode sets includes a plurality of common electrodes, and each of the pixel units is corresponding to at least one of the common electrodes of the common electrode sets.

[0019] According to the above and other objects, the present invention provides a driving method being adapted for the foregoing MVA-LCD panel. The driving method includes the steps of: inputting a control voltage to a DDE to pre-tilt the liquid crystal molecules of the liquid crystal layer; inputting a plurality of common electrode voltages respectively to the corresponding common electrode sets; and inputting a data signal to the pixel unit.

[0020] The values of the foregoing common electrode voltages may be periodically changed.

[0021] The differences among the common electrode voltages can be ranged from 0.1V to 5V.

[0022] According to the above and other objects, the present invention provides an MVA-LCD panel including an active component array substrate, an opposite substrate, a dielectric layer and a liquid crystal layer. Wherein, the liquid crystal layer is disposed between the active component array substrate and the opposite substrate. The active component array substrate includes a plurality of scan lines, a plurality of data lines, a plurality of control lines and a plurality of pixel units. Each of the pixel units is controlled by the corresponding scan line, data line and control line. Each of the pixel units includes an active component, a DDE and a pixel electrode. The active component is electrically connected with the corresponding scan line and the corresponding data line, the DDE is electrically connected with the corresponding control line, the pixel electrode is electrically connected with the active component. A pixel electrode has a plurality of first slits and a plurality of third slits, and the DDE is disposed under the first slits. The opposite substrate has a common electrode layer facing toward the active component array substrate. The dielectric layer covers a part of the common electrode layer and/or covers some of the pixel electrodes.

[0023] The foregoing dielectric layer may cover the third slits. The dielectric layer may cover the common electrode layer disposed over the DDE, too. Moreover, the material of the dielectric layer can be a transparent organic material or a transparent inorganic material.

[0024] In summary, adoption of DDEs in the present invention not only solves the problem of light leakage, but also pre-tilts the liquid crystal molecules for shortening the

response time required. Furthermore, according to the present invention, two effective voltages are applied to the liquid crystal layer over a same pixel unit; therefore, the problems of color shift and color washout in accordance with the viewing angle changes can be eliminated.

#### BRIEF DESCRIPTION OF THE DRAWINGS

[0025] The accompanying drawings are included to provide a further understanding of the invention, and are incorporated in and constitute a part of this specification. The drawings illustrate embodiments of the invention and, together with the description, serve to explain the principles of the invention.

[0026] FIG. 1 is a diagram schematically illustrating the relation between the normalized transmittance and the gray level of a conventional MVA-LCD.

[0027] FIG. 2A is a cross-sectional view of an MVA-LCD panel according to the first embodiment of the present invention.

[0028] FIG. 2B is a top view of the active components array substrate of FIG. 2A.

[0029] FIG. 3A is a schematic diagram illustrating the pre-tilt molecules of an MVA-LCD panel according to the first embodiment of the present invention.

[0030] FIG. 3B is a dot inversion driving waveform timing sequence diagram of an MVA-LCD panel according to the first embodiment of the present invention.

[0031] FIG. 4 is a pulse driving waveform timing sequence diagram of an MVA-LCD panel according to the first embodiment of the present invention.

[0032] FIG. 5A is a cross-sectional view of an MVA-LCD panel according to the second embodiment of the present invention.

[0033] FIG. 5B is a top view of the opposite substrate of FIG. 5A.

[0034] FIG. 6 is a pulse driving waveform timing sequence diagram of an MVA-LCD panel according to the second embodiment of the present invention.

[0035] FIG. 7A is a diagram schematically illustrating the relation between the normalized transmittance and the gray level according to the second embodiment of the present invention.

[0036] FIG. 7B is another diagram schematically illustrating the relation between the normalized transmittance and the gray level according to the second embodiment of the present invention.

[0037] FIG. 8 is a cross-sectional view of an MVA-LCD panel according to the third embodiment of the present invention.

#### DESCRIPTION OF THE EMBODIMENTS

##### The First Embodiment

[0038] FIG. 2A is a cross-sectional view of an MVA-LCD panel according to the first embodiment of the present invention and FIG. 2B is a view from the top of the active components array substrate of FIG. 2A. Referring to FIGS. 2A and 2B, a MVA-LCD panel includes an active component array substrate **100**, an opposite substrate **300** and a liquid crystal layer **200**. The liquid crystal layer **200** is disposed between the active component array substrate **100** and the opposite substrate **300**.

[0039] The active component array substrate **100** can be a thin film transistor (TFT) array substrate, a diode array sub-

strate or other active component array substrates, while the opposite substrate **300** for example can be a color filter substrate. However, the active component array substrate **100** can also be a color filter on array (COA) substrate, while the opposite substrate **300** is an upper substrate having common electrodes. The COA substrate has a structure of a TFT array substrate with a color filter film formed thereon.

[0040] The active component array substrate **100** includes a substrate **110**, a plurality of scan lines **120**, a plurality of data lines **130**, a plurality of control lines **140** and a plurality of pixel units **150**. The scan lines **120**, the data lines **130**, the control lines **140** and the pixel units **150** are disposed on the substrate **110**. Each of the pixel units **150** is controlled by the corresponding scan line **120**, data line **130** and control line **140**.

[0041] In detail, each of the pixel units **150** includes an active component **152**, a DDE **154** and a pixel electrode **156**. The active component **152** is electrically connected with the corresponding scan line **120** and data line **130**. According to the embodiment, the active component **152** is a TFT. However the active component **152** can also be a diode or other active components having three terminals. Furthermore, the DDE **154**, which is to be illustrated in detail later, is electrically connected with the corresponding control line **140**. According to the embodiment, the DDE **154** can be substantially taken as being composed of a first DDE **154a** and a second DDE **154b**. A dielectric layer **160** covers the first DDE **154a** and the second DDE **154b**, and the pixel electrode **156** is disposed on the dielectric layer **160**. The pixel electrode **156** having a plurality of slits **156a** is electrically connected with the active component **152**, and the first DDE **154a** is disposed below the slits **156a**.

[0042] The opposite substrate **300** includes a substrate **310** and a common electrode layer **320**. The common electrode layer **320** facing toward the active component array substrate **100** is disposed on the substrate **310**. The common electrode layer **320** has a plurality of slits **320a** and at least a part of the slits **320a** is disposed over the first DDE **154a**.

[0043] It should be noted that the pixel electrodes may have a plurality of slits **156b**, each of the slits **156b** being located between two slits **156a**. The second DDEs **154b** are disposed under some slits **156b** while the slits **156b** are not corresponding to any slits **320a** (as shown at the right side of FIG. 2A). However, some slits **156b** may not have any DDEs **156b** disposed underneath (as shown at the left side of FIG. 2A). There are many models adapted for driving an MVA-LCD panel **10**, for example, a dot inversion driving model for achieving a lower cross talk or a pulse driving model for a better dynamic displaying quality. A dot inversion driving model is to be illuminated as an example below.

[0044] FIG. 3A is a schematic diagram illustrating the pre-tilt molecules of an MVA-LCD panel according to the first embodiment of the present invention. FIG. 3B is a dot inversion driving waveform timing sequence diagram of an MVA-LCD panel according to the first embodiment of the present invention. Referring to FIGS. 3A and 3B, a driving method including inputting a control voltage to a DDE **154** for pre-tilting the liquid crystal molecules **210** of the liquid crystal layer **200** (as shown in FIG. 3A). Moreover, the control voltage may sustain last a frame time for achieving a stable operation. Further, a voltage difference is being sustained between the control voltage and the voltage of the common electrode layer **320**. Meanwhile, the absolute value of the voltage difference between the control voltage and the com-

mon electrode of the opposite substrate **300** is larger than the absolute value of the voltage difference between the pixel electrode **156** and the common electrode.

[0045] For instance, when a common electrode voltage is 6V and the corresponding pixel electrode voltage is from 6V to 11.5V, the absolute value of the voltage difference between the pixel electrode **156** and the common electrode is from 0 to 5.5V. Under this circumstance, the absolute values of the voltage differences between the control voltages of the pixel units **150** and the common electrodes of the opposite substrate **300** should be respectively larger than the absolute values of the voltage differences between the pixel electrodes **156** and the common electrodes. Therefore, the control voltage, for example, can be 0V or less than 0V, or 12V or more than 12V, or fixed at 16V. Similarly, when the pixel electrode voltages are from 0.5V to 6V, the absolute values of the differences between the control voltage and the common electrode voltages should be respectively larger than the absolute values of the voltage differences between pixel electrodes and the common electrodes. Consequently, the control voltage can be set, for example, 0V or less than 0V, or 12V or more than 12V, or fixed at, for example, -4V.

[0046] Briefly, when a common electrode voltage is 6V and the corresponding pixel electrode voltage is from 6V to 11.5V, the control voltage should be either larger than the difference therebetween or fixed at, for example, 16V. When the pixel electrode voltage is from 0.5V to 6V, the absolute value of the difference between the control voltage and the common electrode voltage should be larger than the absolute value of the voltage difference between the pixel electrode and the common electrode. For simplicity, the control voltage can be fixed at, for example, -4V. However, the control voltage is not exclusively being 16V or -4V according to the embodiment, in that all of those satisfying the requirement that the absolute value of the difference between the control voltage and the common electrode voltage is larger than the absolute value of the voltage difference between the pixel electrode and the common electrode are acceptable. Hereby, the control voltage can be other than the foregoing examples and those skilled in the art may change the control voltage according to the virtual design of the products. Furthermore, the value of the control electrode voltage may be changed periodically taking a frame time as a period of time; and the driving time of the control electrode can be completed within a frame time. For example, the predetermined foregoing driving time can be less than  $8 \times 10^{-3}$  s.

[0047] After a predetermined time of inputting the control voltage, a data signal is inputted to the pixel unit **150** (as shown in FIG. 2A). And, the predetermined time is shorter than a frame time, for example, shorter than  $16.6 \times 10^{-3}$  s or  $1 \times 10^{-3}$  s. For example, when inputting a data signal to a pixel unit **150** in a dot inversion driving model, the control voltage is inputted to a DDE **154** via a control line **140**. The voltage of each control line **140** will be changed after every frame time. Then, after the liquid crystal molecules **210** of the liquid crystal layer **200** being pre-tilted, a starting signal is to be inputted in sequence to the scan lines **120**. Simultaneously, a data signal is outputted in sequence to the pixel units **150** according to the dot inversion driving model. At this time, the voltage polarities of two adjacent pixel units **150** are inputted to a same column or a same row, which are opposite to each other (for example, positive, negative, positive, negative).

[0048] In detail, the common electrode layer **320** may have a voltage of 6V and the pixel electrode **156** may have a voltage

ranged from 6V to 11.5V for positively driving. However, the pixel electrode **156** may also have a voltage ranged from 0.5V to 6V for negatively driving.

**[0049]** The MVA-LCD panel **10** may adopt either a normally black image model or a normally white model. Since the DDE **154** is formed by a nontransparent conductive material, the problem of light leakage of the DDE **154** can be avoided. Further, comparing to employing slits only, the DDE **154** makes the liquid crystal molecules **210** pre-tilted and the MVA-LCD panel **10** consequently has a shorter response time. It should be noted that the model for inputting the data signals to the pixel unit **150** should not be limited as a dot inversion driving model. Other adoptable driving models such as a pulse driving model may also be selected.

**[0050]** FIG. **4** is a pulse driving waveform timing sequence diagram of an MVA-LCD panel according to the first embodiment of the present invention. Referring to FIGS. **2B** and **4**, in order to simplify the driving model of DDEs **154**, all the DDEs **154** may be electrically connected to two control lines **140**, respectively. The driving method includes: (a) respectively inputting voltages to the two control lines **140**, and the voltages the two control lines **140** transmitted are different from each other; (b) after a predetermined time which is usually shorter than a normal frame time, respectively inputting data signals to the pixel units **150** which are the former half part of the first frame time; (c) thereafter, inputting a dim voltage during the latter half part of the first frame time (the data signal voltages are not shown), and then returning back to a black image; (d) changing the value of the control voltage; and repeating the steps from (b) to (d). Such a driving method can fixedly change the voltage of the control electrode in a period of time. The period can be a frame time, less than a frame time or two times of a frame time, or more than two times of a frame time. The driving circuit is comparatively simple, and the complexity of the processing process thereof can be reduced accordingly. It is to be noted that the driving method of FIG. **4** can be adapted for the structure of FIG. **2B**.

#### The Second Embodiment

**[0051]** FIG. **5A** is a cross-sectional view of an MVA-LCD panel according to the second embodiment of the present invention. FIG. **5B** is a view of the opposite substrate of FIG. **5A** from the liquid crystal side. Referring to FIGS. **5A** and **5B**, both of which use two pixels (upper and lower) as example for illustration, while it may apply in a display panel containing one or multiple pixel units. According to the embodiment of the MVA-LCD panel **20**, the common electrode layer **410** of the opposite substrate **400** includes a plurality of common electrode sets **412**, **414** and **416**, and the common electrode sets are insulated from each other. Further, each of the common electrode sets **412**, **414** and **416** includes a plurality of common electrodes; however, only the adjacent two upper and lower pixel electrodes are illustrated as an example according to FIG. **5B**, herein the common electrode sets **412**, **414** and **416** respectively include two, two and one common electrodes. In this embodiment, each of the pixel units **150** is corresponding to three common electrode sets **412**, **414** and **416**. It should be noted that although the common electrode layer **410** according to the embodiment is illustrated as being composed of three common electrode sets **412**, **414** and **416**, the common electrode layer **410** according to the embodiment may also be composed of two or four or more than four common electrode sets.

**[0052]** Furthermore, because the common electrode layer **410** has a relatively higher ohmic value, the opposite substrate **400** may further include a plurality of conducting line sets, each of the conducting line sets including a plurality of conducting lines. According to FIG. **5B**, only the adjacent two upper and lower pixel electrodes are illustrated as an example, herein each of the conducting line sets **422**, **424** and **426** in FIG. **5B** respectively have two, two and one conducting line. The common electrode sets **412**, **414** and **416** respectively cover the corresponding conducting line sets **422**, **424** and **426**. Therefore, voltages can be respectively inputted to the corresponding common electrode sets **412**, **414** and **416** via the conducting line sets **422**, **424** and **426**. A pulse driving model for driving an MVA-LCD panel according to the present invention is to be illustrated below.

**[0053]** FIG. **6** is a pulse driving waveform timing sequence diagram of an MVA-LCD panel according to the second embodiment of the present invention. Together referring to FIGS. **2B**, **5A**, **5B** and **6**, a driving method of pulse driving model according to the embodiment includes the steps as below. First, a control voltage is inputted to a DDE **154** for pre-tilting the liquid crystal molecules **210** of the liquid crystal layer **200**. The control voltage can be 16V or -4V. In addition, the control voltage can sustain last a predetermined time. Wherein, the predetermined time can be less than a frame time, for example, less than  $16.6 \times 10^{-3}$  s or less than  $1 \times 10^{-3}$  s.

**[0054]** Then, a plurality of common electrode voltages are respectively inputted to the corresponding common electrode sets **412**, **414** and **416**. The values of the common electrode voltages may be periodically changed and the period may be a frame time, shorter than a frame time, two frame times or more than two frame times. According to an embodiment, the values of the control voltage and the common electrode voltages are periodically changed every frame time. Also, the common electrode voltages and the control voltage can be simultaneously inputted to the corresponding common electrode sets and control electrode (DDE). Further, the predetermined timing difference between inputting the control voltage and the common electrode voltages and inputting the data signals (pixel voltages) can be less than a frame time, for example, less than  $16.68 \times 10^{-3}$  s or less than  $1 \times 10^{-3}$  s.

**[0055]** Further, a voltage difference is being sustained between the control voltage and the voltage of the common electrodes while the absolute value of the voltage difference between the control voltage and the common electrodes is larger than the absolute value of the voltage difference between the pixel electrode and the common electrodes. In detail, in order to allow the liquid crystals disposed at the same pixel area to sense different degrees of voltages applied, the foregoing common electrodes are preferred to be at least two common electrode sets being insulated from each other, wherein different voltages can be applied to the common electrode sets. Each of the common electrode sets has different voltage differences with the signal pixel electrode of the lower substrate electrode. The voltage differences are preferred to be ranged from 0.1V to 5V. For example, if there are two common electrode sets whose voltages are respectively 5.6V and 6.4V, and if the voltage value of the pixel electrode is A, the voltage differences between the two common electrode sets and the pixel electrode are respectively 15.6-A1V and 16.4-A1V. Therefore, the difference between the voltages sensed by the liquid crystals corresponding to the foregoing two common electrode sets is 0.8V. Or, if there are three

common electrode sets whose voltages are respectively 5.2V, 6V and 6.8V, and if the voltage value of the pixel electrode is A, the voltage differences between the three common electrode sets and the pixel electrode are respectively 15.2-A/V, 16-A/V and 16.8-A/V. Therefore, the difference between the voltages sensed by the liquid crystals corresponding to the foregoing three common electrode sets is 0.8V or 1.6V.

[0056] Briefly, when the control voltage is 16V or -4V, the corresponding common electrode voltages can be respectively 5.2V, 6V or 6.8V, therefore the absolute values of the voltage differences between the control electrode and the common electrodes are 9.2V, 10V and 10.8V. Moreover, the pixel electrode voltage is from 0.5V to 6V or from 6V to 11.5V, and the absolute values of the voltage differences between the pixel electrode and the common electrodes are about from 0 to 6.3V. Consequently, there are three voltage differences between a pixel electrode and common electrodes of the upper substrate, wherein the voltage differences that the liquid crystals corresponding to the three sets of common electrodes senses are 0.8V or 1.6V. The illustration is for example only and not to limit the scope of the invention. A range of the voltage differences between 0.1V and 5V is generally related to better results. It is to be noted that when there are only two common electrode sets, the voltages inputted to the two common electrode sets can be, for example, 5.6V and 6.4V.

[0057] To simplify the driving method, the common electrode voltages can also be simultaneously inputted in the corresponding common electrode sets 412, 414 and 416. Also, the control voltage can also be inputted to the DDE 154 at the same time. As shown in FIG. 6, a simplified driving method includes: (a) respectively inputting voltages to the two control lines 140 and three common electrode sets 412, 414 and 416, and the voltages that the two control lines 140 and the three common electrode sets 412, 414 and 416 transmitted are different from each other; (b) after a predetermined time which is usually shorter than a normal frame time, respectively inputting data signals to the pixel units 150, being the former half part of the first frame time; (c) thereafter, inputting a dim voltage during the latter part of the first frame time (the data signal voltages are not shown), and then returning back to an black image; (d) changing the value of the control voltage; and repeating the steps from (b) to (d). Such a driving method can fixedly change the voltage of the control electrode every period. The period can be a frame time, less than a frame time or two times of a frame time, or more than two times of a frame time. The driving circuit is comparatively simple, and the complexity of the processing process thereof can be reduced accordingly. Furthermore, the control line 140 and the three common electrode sets 412, 414 and 416 are divided into several parts, being inputted with voltages having different polarities. However, it can also take a pair of control lines 140 as a group and input voltages group by group (as shown in FIG. 3B).

[0058] FIG. 7A is a diagram schematically illustrating the relation between the normalized transmittance and the gray level according to the second embodiment of the present invention. FIG. 7B is another diagram schematically illustrating another relation between the normalized transmittance and the gray level according to the second embodiment of the present invention. Referring to FIGS. 7A and 7B, the horizontal coordinate represents the gray level and the vertical coordinate represents the normalized transmittance. In these figures, the area 1, 2, 3 respectively represents the area pro-

portion corresponding to each of the pixel units. Because the common electrode layer 410 includes a plurality of common electrode sets 412, 414 and 416, and the voltages inputted to the common electrode sets are different from each other, there are three kinds of effective voltages applying to the liquid crystal layer 200 over the pixel unit 150.

[0059] In detail, comparing with the conventional technologies (as shown in FIG. 1), it can be known from FIGS. 7A and 7B, the MVA-LCD panel 20 according to the embodiment has better displaying quality. Furthermore, because the area proportions of the common electrode sets are different from each other and the curvature of the transmittance-level curves are not the same, images having better displaying quality can be achieved by properly selecting the area proportions of the common electrode sets. Also, if the common electrode layer 410 is divided into only two or more four common electrode sets, the areas of these two or more than four common electrode sets can be properly arranged in groups for avoiding the problems of color shift and a color washout. It should be noted that, as to be described below in detail, providing more than two effective voltages in a same pixel unit 150 is not limited to the foregoing embodiments.

#### The Second Embodiment

[0060] FIG. 8 is a cross-sectional view of an MVA-LCD panel according to the third embodiment of the present invention. Referring to FIG. 8, in an MVA-LCD panel 30 according to the embodiment, an opposite substrate 500 has a common electrode layer 510 facing toward the active component array substrate 100. A dielectric layer 600 covers a part of the common electrode layer 510 and a part of the pixel electrode 156. It should be noted that the dielectric layer 600 may also cover a part of the common electrode layer 510 only or cover a part of the pixel electrode 156 only.

[0061] More specifically, the dielectric layer 600 may cover upon the slit 156b (shown at the two sides of FIG. 8) of the pixel electrode 156; and the dielectric layer 600 may also be disposed on the common electrode layer 510 (shown at the central part of FIG. 8) over the DDE 154. Furthermore, the material for forming the dielectric layer 600 can be transparent organic material or transparent inorganic material.

[0062] The dielectric layer 600 not only pre-tilts the liquid crystal molecules 210, but also allows the liquid crystal molecules 210 which are disposed over a same pixel unit receiving more than two effective voltages, so as to solve the problem of color shift caused by a change of viewing angles. Moreover, the DDE 154 can solve the problem of light leakage and thus improve the response speed.

[0063] In summary, the present invented MVA-LCD panel and the driving method thereof have at least the advantages below:

[0064] Because the DDE is composed of nontransparent material, it not only solves the problem of light leakage, but also pre-tilts the liquid crystal molecules for shortening the response time;

[0065] To a dot inversion driving model or a pulse driving model, inputting the data signals to the pixel units after a predetermined period of inputting the control voltages to the DDE allows the liquid crystal molecules being pre-tilted. In other words, prior to the input of the data to the pixel units, the liquid crystal molecules have been pre-tilted. Accordingly, the response period is shortened;

[0066] Comparing with the conventional technologies, because the common electrode layer is divided into a plurality

of common electrode sets which are applied with different voltages, there will be more than two effective voltages applied to the liquid crystal layer over the same pixel unit for solving the problem of color shift and color washout caused by a change of viewing angles; and

**[0067]** A dielectric layer is disposed on a part of the common electrode layer and/or a part of the pixel electrode according to the present invention, more than two voltages can be applied to a liquid crystal layer over a same pixel unit.

**[0068]** Other modifications and adaptations of the above-described preferred embodiments of the present invention may be made to meet particular requirements. This disclosure is intended to exemplify the invention without limiting its scope. All modifications that incorporate the invention disclosed in the preferred embodiment are to be construed as coming within the scope of the appended claims or the range of equivalents to which the claims are entitled.

What is claimed is:

1. An MVA-LCD panel, comprising:

an active component array substrate, comprising

a plurality of scan lines;

a plurality of data lines; and

a plurality of pixel units, wherein each of the pixel units is controlled by the corresponding scan line and data line, and each of the pixel units comprises:

an active component electrically connected with the corresponding scan line and the corresponding data line; and a pixel electrode electrically connected with the active component;

an opposite substrate having a common electrode layer facing toward the active component array substrate, wherein the common electrode layer comprises a plurality of common electrode sets which are insulated from each other; wherein each of the common electrode sets comprises a plurality of common electrodes, each of the pixel units corresponding to at least one common electrode of the common electrode sets; and

a liquid crystal layer disposed between the active component array substrate and the opposite substrate.

2. A method for driving an MVA-LCD panel according to claim 1, the method comprising:

applying a plurality of common electrode voltages respectively to the corresponding common electrode sets; and applying a data signal to the pixel unit.

3. The method according to claim 2, wherein the value of the common electrode voltages are periodically changed.

4. The method according to claim 2, wherein the voltage difference among the common electrodes ranges from about 0.1V to about 5V.

\* \* \* \* \*

专利名称(译)	多域垂直配向液晶显示面板及其驱动方法		
公开(公告)号	<a href="#">US20090310046A1</a>	公开(公告)日	2009-12-17
申请号	US12/546691	申请日	2009-08-25
[标]申请(专利权)人(译)	友达光电股份有限公司		
申请(专利权)人(译)	友达光电股份有限公司		
当前申请(专利权)人(译)	友达光电股份有限公司		
[标]发明人	SU JENN JIA		
发明人	SU, JENN-JIA		
IPC分类号	G02F1/1343 G02F1/133		
CPC分类号	G02F1/133707 G02F1/134309 G02F1/1393 G09G2320/0252 G09G3/3648 G09G2300/043 G09G2300/0439 G02F2001/13373		
优先权	094113064 2005-04-25 TW		
其他公开文献	US7876411		
外部链接	<a href="#">Espacenet</a> <a href="#">USPTO</a>		

摘要(译)

提供一种MVA-LCD面板，包括有源元件阵列基板，相对基板和设置在其间的液晶层。有源元件阵列基板包括扫描线，数据线，控制线和像素单元。每个像素单元包括有源组件，域分割电极 ( DDE ) 和像素电极。有源元件与对应的扫描线和对应的数据线电连接，DDE与对应的控制线电连接，像素电极与有源元件电连接。像素电极具有第一狭缝，第一DDE设置在第一狭缝下方。对向基板具有面向有源元件阵列基板的公共电极层。公共电极层包括第二狭缝，并且第二狭缝的至少一部分设置在第一畴分割电极上。

