



US 20090284674A1

(19) **United States**

(12) **Patent Application Publication**

Chang et al.

(10) **Pub. No.: US 2009/0284674 A1**

(43) **Pub. Date: Nov. 19, 2009**

(54) **VERTICAL ALIGNMENT LIQUID CRYSTAL DISPLAY DEVICE AND METHOD FOR DRIVING SAME**

(30) **Foreign Application Priority Data**

May 16, 2008 (CN) 200810067271.3

(75) Inventors: **Yueh-Ping Chang, Miao-Li (TW);
Chao-Yi Hung, Miao-Li (TW)**

Publication Classification

(51) **Int. Cl.**
G02F 1/1343 (2006.01)

(52) **U.S. Cl.** **349/38**

Correspondence Address:
**WEI TE CHUNG
FOXCONN INTERNATIONAL, INC.
1650 MEMOREX DRIVE
SANTA CLARA, CA 95050 (US)**

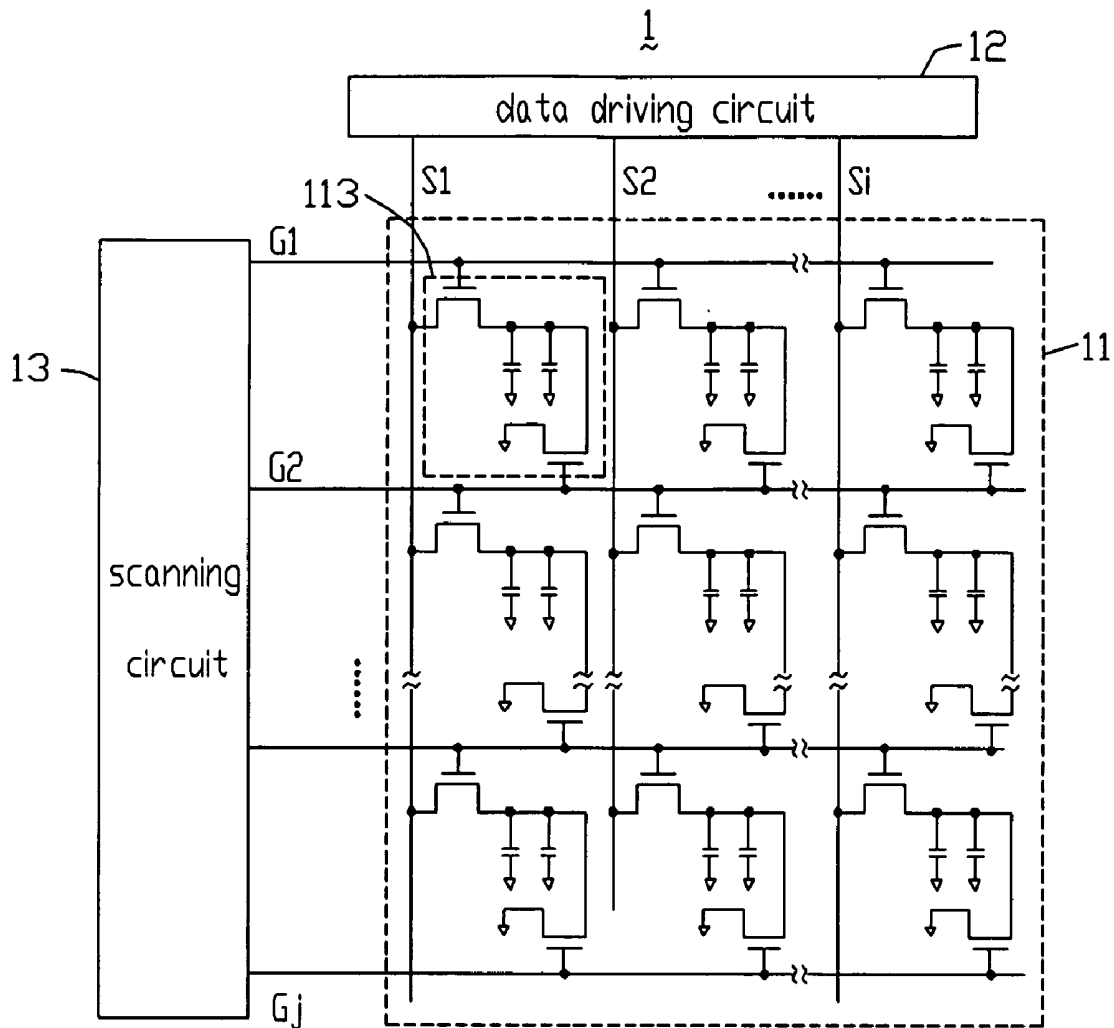
(57) **ABSTRACT**

(73) Assignee: **INNOLUX DISPLAY CORP.**

A vertical alignment liquid crystal display device (VA-LCD) includes a display panel. The display panel includes a plurality of pixels. Each pixel unit includes a liquid crystal capacitor. The liquid crystal capacitor maintains two different gray voltages in a display frame time of the VA-LCD.

(21) Appl. No.: **12/454,450**

(22) Filed: **May 18, 2009**



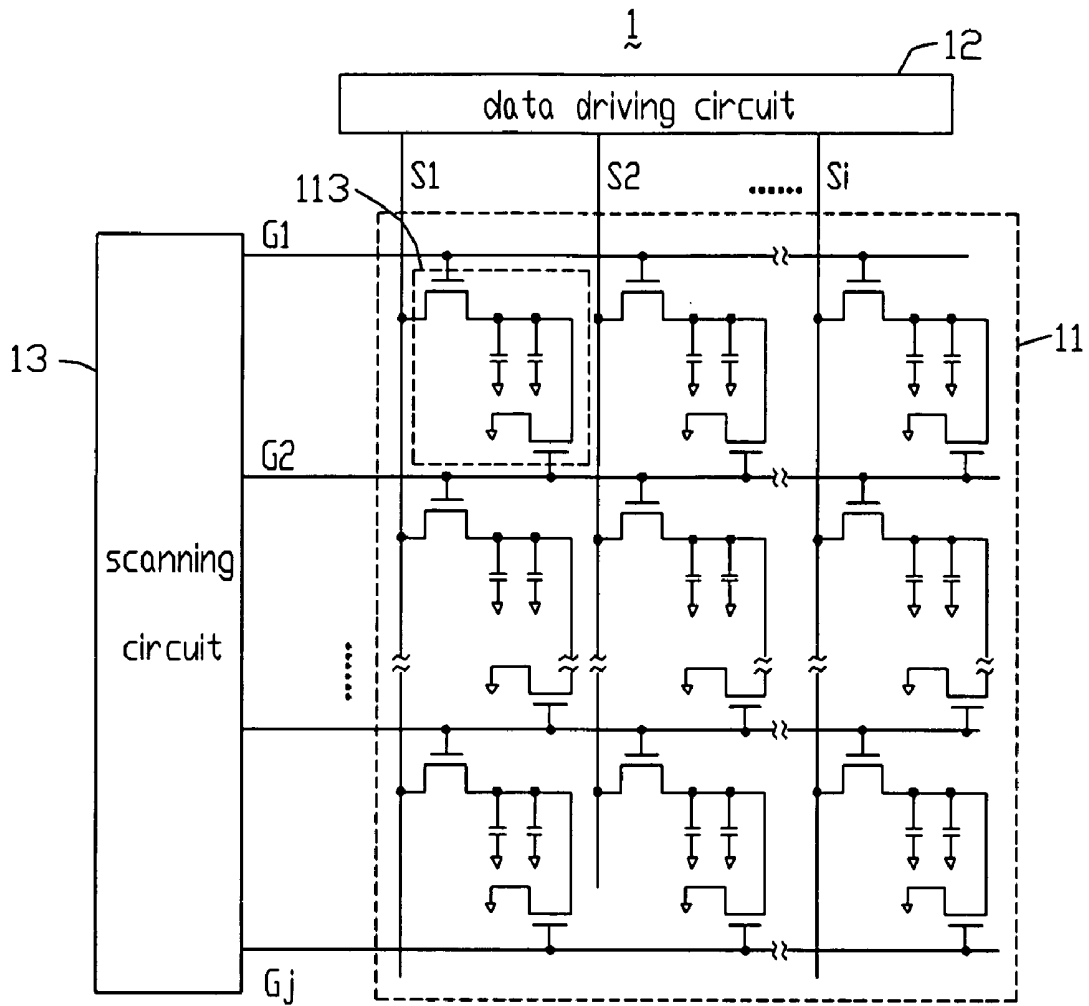


FIG. 1

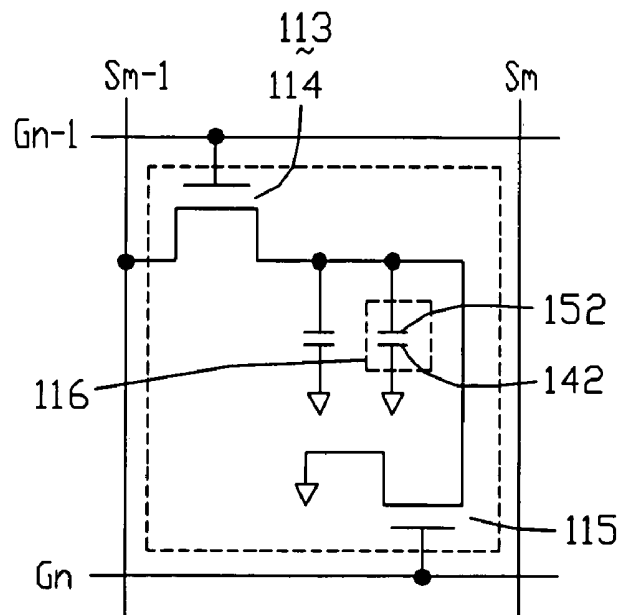


FIG. 2

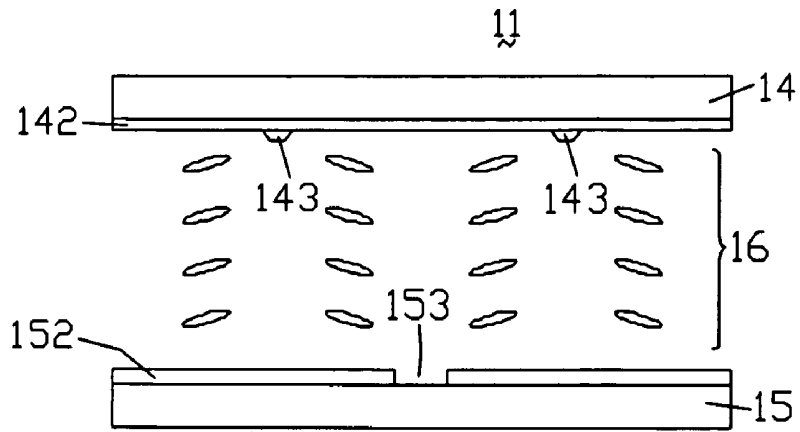


FIG. 3

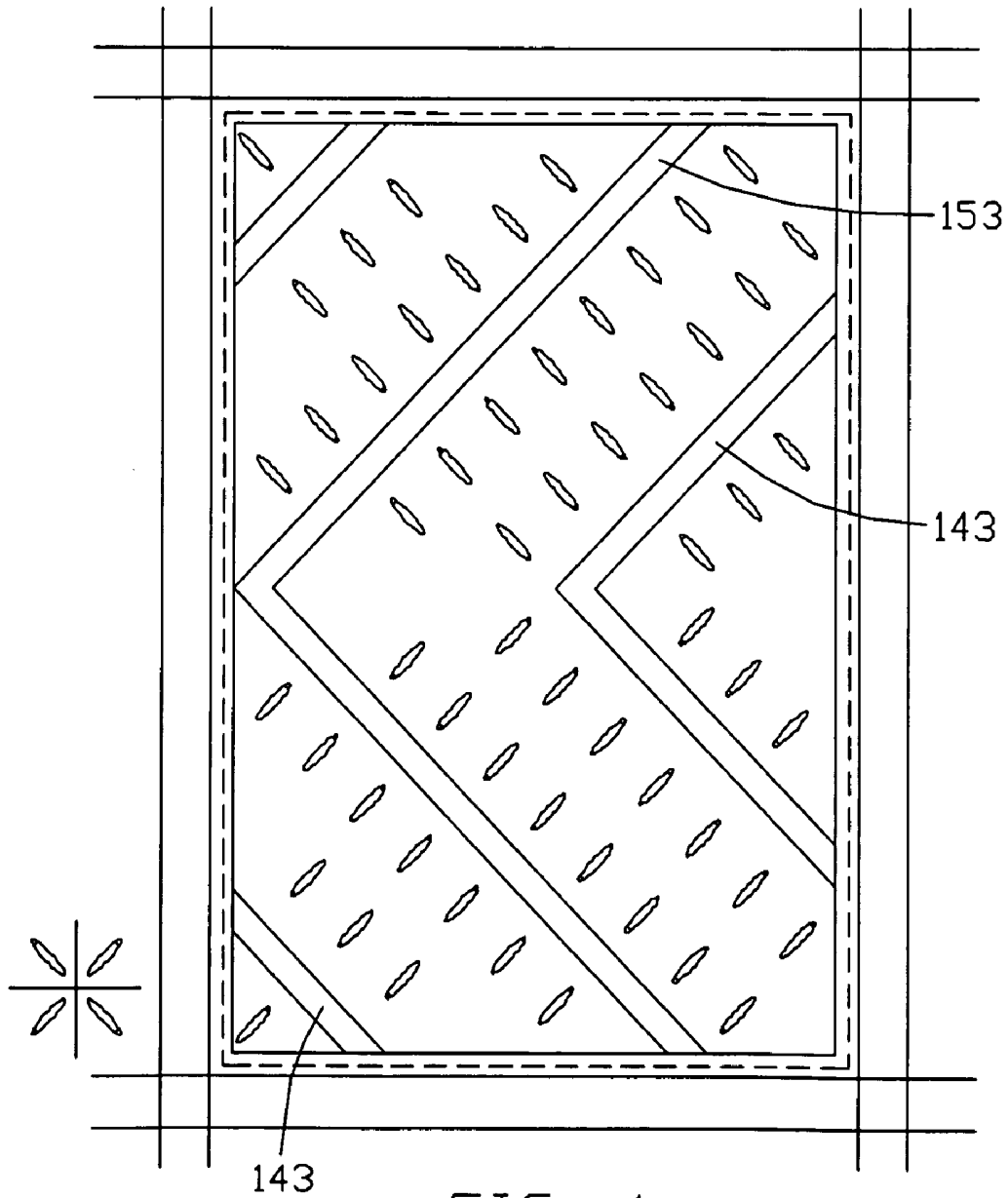


FIG. 4

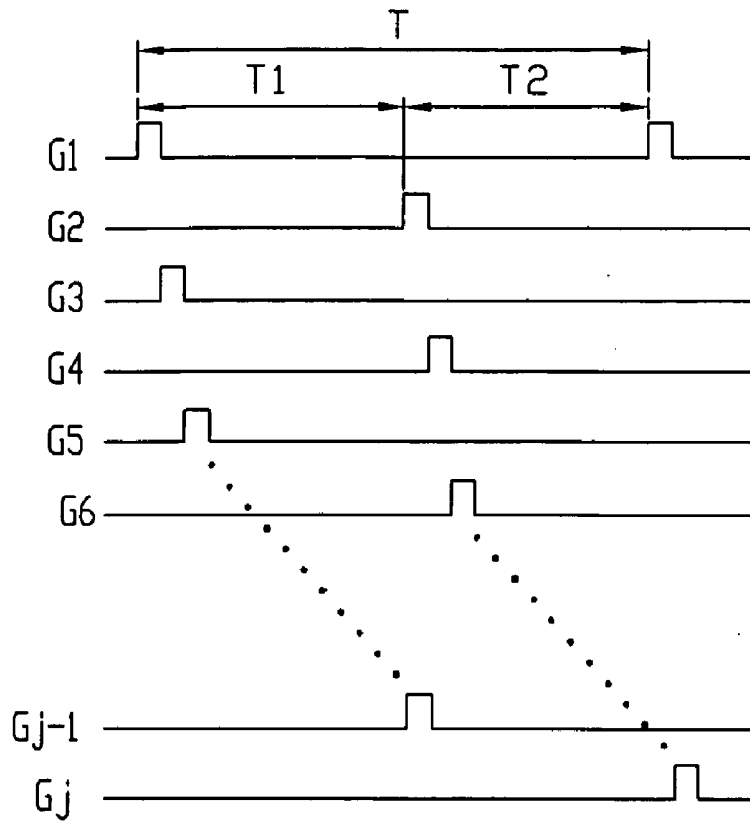


FIG. 5

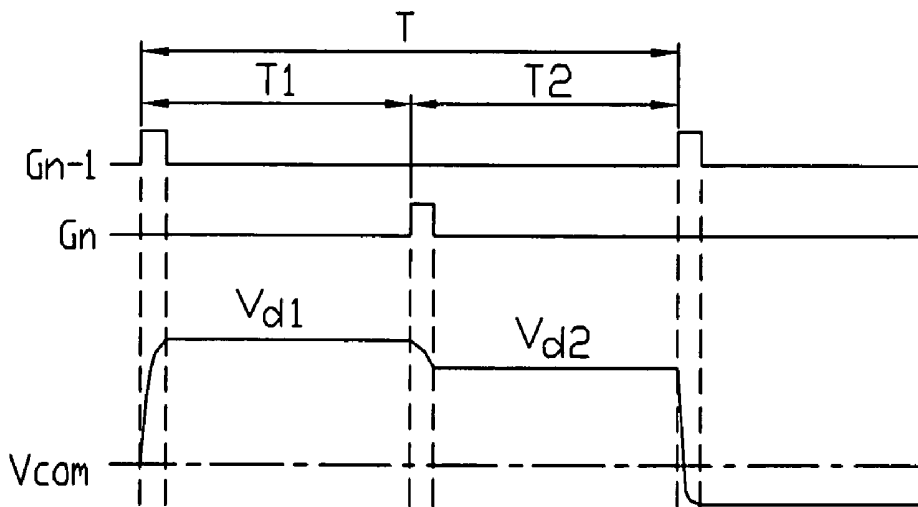


FIG. 6

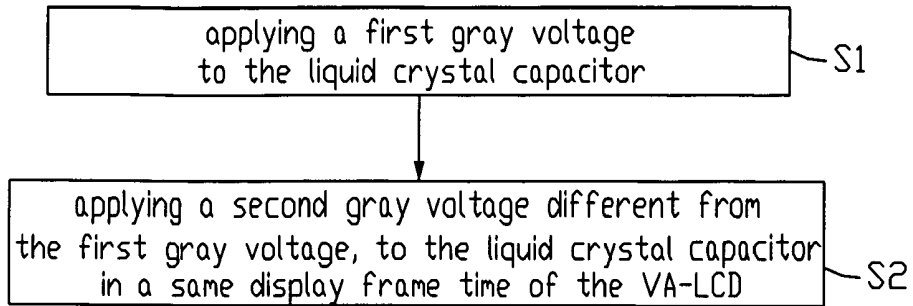


FIG. 7

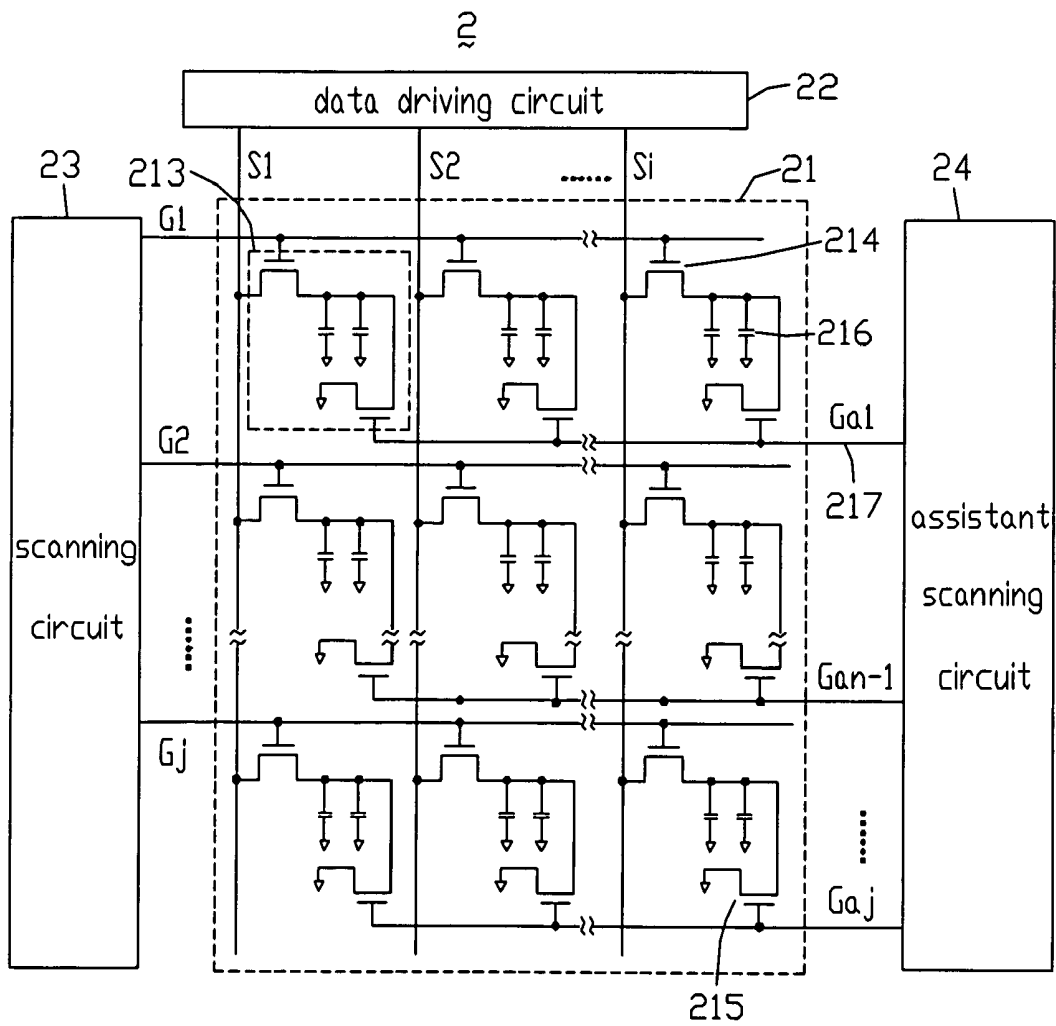


FIG. 8

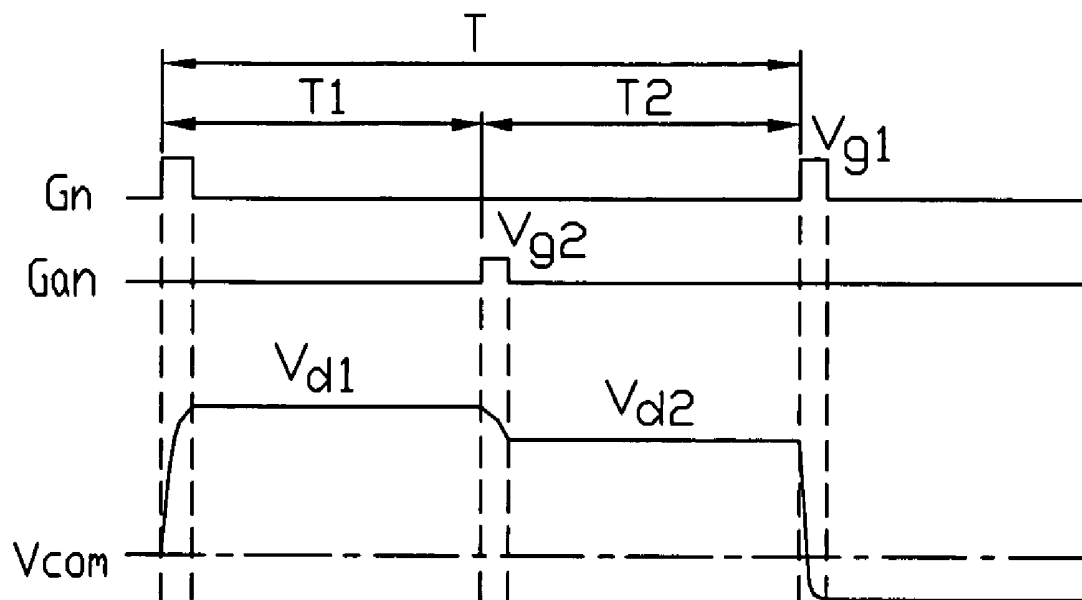


FIG. 9

**VERTICAL ALIGNMENT LIQUID CRYSTAL
DISPLAY DEVICE AND METHOD FOR
DRIVING SAME**

BACKGROUND

[0001] 1. Technical Field

[0002] The present disclosure relates to a liquid crystal display device, and more particularly to a vertical alignment liquid crystal display (VA-LCD) device and a method for driving the VA-LCD device.

[0003] 2. Description of Related Art

[0004] Since liquid crystal molecules in a liquid crystal display device emit no light themselves, illumination by a light source is necessary to display clear and sharp text and images. By controlling the torsion of liquid crystal molecules in the liquid crystal display device with gray voltages, the liquid crystal display device can control the transmission of light beams emitted from a light source, so that the liquid crystal display device can display images.

[0005] Twist-nematic type liquid crystal display (TN-LCD) devices, while commonly used, are limited by a correspondingly narrow viewing angle, such that different colors are viewed from different angles. To overcome the problem, a multi-domain vertical alignment liquid crystal display (MVA-LCD) device and a patterned vertically aligned liquid crystal display (PVA-LCD) device have been developed. By disposing a plurality of “<” shaped protrusions or grooves on the inner surfaces of substrates, each pixel of the MVA-LCD device or PVA-LCD device is divided into a plurality of domains. The liquid crystal molecules of each domain are aligned at different angles, so as to widen the viewing angle of the LCD device.

[0006] However, a long optical axis of the liquid crystal molecule has a refractive index different from that of a short optical axis of the liquid crystal molecule, generating color shift when viewed from different angles, thus the MVA-LCD device still has limited display quality.

[0007] What is needed, is an liquid crystal display device that can overcome the described limitations.

BRIEF DESCRIPTION OF THE DRAWINGS

[0008] The components in the drawings are not necessarily drawn to scale, the emphasis instead being placed upon clearly illustrating the principles of the present VA-LCD device and a method for driving the VA-LCD device. In the drawings, like reference numerals designate corresponding parts throughout various views, and all the views are schematic.

[0009] FIG. 1 is a schematic circuit diagram of a first embodiment of a VA-LCD device according to the present disclosure, the VA-LCD including a plurality of pixels.

[0010] FIG. 2 is an enlarged view of a pixel of the VA-LCD device of FIG. 1.

[0011] FIG. 3 is a schematic side view of a pixel of a display panel of the VA-LCD device of FIG. 1.

[0012] FIG. 4 is a schematic plan view of the pixel of the display panel of the VA-LCD device of FIG. 3.

[0013] FIG. 5 is a waveform graph of scanning signals of the VA-LCD device of FIG. 1.

[0014] FIG. 6 is a waveform graph of driving signals of the VA-LCD device of FIG. 1.

[0015] FIG. 7 is a flowchart of an exemplary method for driving the VA-LCD device of FIG. 1.

[0016] FIG. 8 is a schematic circuit of a second embodiment of a VA-LCD device according to the present disclosure.

[0017] FIG. 9 is a waveform graph of driving signals of the VA-LCD device of FIG. 8.

DETAILED DESCRIPTION

[0018] Reference will now be made to the drawings to describe exemplary embodiments of the present disclosure in detail.

[0019] FIG. 1 is a schematic circuit diagram of a first embodiment of a VA-LCD device 1 according to the present disclosure. The VA-LCD device 1 includes a display panel 11, a data driving circuit 12, and a scanning circuit 13.

[0020] The display panel 11 includes a plurality of parallel scan lines G1~Gj, and a plurality of data lines S1~Si parallel to each other and orthogonal to the scan lines G1~Gj. The scan lines G1~Gj and the data lines S1~Si cooperatively define a plurality of pixels 113.

[0021] FIG. 2 is an enlarged view of a pixel 113 of the VA-LCD device 1 of FIG. 1. The data line Sm-1 and the data line Sm together with the scan line Gn-1 and the scan line Gn define the m×nth pixel 113, m and n represent any natural number, and $1 \leq m \leq i$, $1 \leq n \leq j$, so the m×nth pixel 113 represents any pixel 113 of the VA-LCD device 1.

[0022] The m×nth pixel 113 includes a first thin film transistor (TFT) 114, a pixel electrode 152, a common electrode 142 opposite to the pixel electrode 152 and a second TFT 115. The common electrode 142 is electrically connected to a common voltage Vcom. A drain of the first TFT 114 is electrically connected to the pixel electrode 152, a source thereof is electrically connected to the data line Sm-1, and a gate thereof is electrically connected to the scan line Gn-1. A drain of the second TFT 115 is electrically connected to the pixel electrode 152, a source thereof is electrically connected to the common voltage Vcom, and a gate thereof is electrically connected to the scan line Gn. The pixel electrode 152 together with the common electrode 142 forms a liquid crystal capacitor 116 maintaining gray voltages.

[0023] The electrical characteristic of the second TFT 115 is different from that of the first TFT 114. A switch-on resistance of the second TFT 115 is greater than that of the first TFT 114. While the same gate voltage is applied to the gates of the first TFT 114 and the second TFT 115, and the same voltage is applied to the drains and the sources of the first TFT 114 and the second TFT 115, current through the first TFT 114 is greater than that through the second TFT 115.

[0024] FIG. 3 shows a schematic side view of a pixel 113 of the display panel 11 of the VA-LCD device 1 of FIG. 1. FIG. 4 shows a schematic plan view of the pixel 113. The display panel 11 further includes a first substrate 14, a second substrate 15, and a liquid crystal layer 16 disposed between the first substrate 14 and the second substrate 15. The common electrode 142 is disposed on a surface of the first substrate 14 that faces the liquid crystal layer 16. A plurality of “<” shaped protrusions 143 are disposed on a surface of the common electrode 142 that faces the liquid crystal layer 16. The pixel electrode 152 is disposed on a surface of the second substrate 15 that faces the liquid crystal layer 16. A plurality of “<” shaped grooves 153 are formed in the pixel electrode 152. Each “<” shaped groove 153 is disposed between two “<” shaped protrusions 143, and each “<” shaped protrusion 143 is disposed between two “<” shaped grooves 153.

[0025] FIG. 5 is a waveform graph of scanning signals of the VA-LCD device 1 of FIG. 1. An interlacing scanning

method is employed in the VA-LCD device 1. In detail, one display frame time T of the VA-LCD device 1 is divided into two sequential substantially equal sub-display frame times T1, T2. In sub-display frame time T1, the scanning circuit 13 sends scanning signals to the odd row scanning lines G1~Gj-1 one after another; and in sub-display frame time T2, the scanning circuit 13 sends scanning signals to the even row scan lines G2~Gj one after another. Thus, for the m×n'th pixel 113, in the display frame time T, the time between the scanning circuit 13 sending a scanning signal to the scan line Gn-1 and sending a scanning signal to the scan line Gn is substantially half a display frame time T.

[0026] FIG. 6 is a waveform graph of driving signals of the VA-LCD device 1 of FIG. 1. FIG. 7 is a flow chart of an exemplary method for driving the VA-LCD device 1. The method for driving the VA-LCD device 1 is described as below.

[0027] In step S1, for the m×n'th pixel 113, the scanning circuit 13 sends a scanning signal to the scan line Gn-1. The scanning signal drives the first TFT 114 to be switched on. Then the data driving circuit 12 outputs a first gray voltage Vd1. The first gray voltage Vd1 charges the liquid crystal capacitor 116 through the data line Sm and the first TFT 114. As the first TFT 114 is switched off, the liquid crystal capacitor 116 maintains the first gray voltage Vd1. Driven by the first gray voltage Vd1, the electric field formed between the pixel electrode 152 and the common electrode 142 inclines to four different orientations because of the "<" shaped protrusions 143 and grooves 153 disposed in the pixel 113 and one protrusion 143 being disposed between every two grooves 153. The declining electric field make liquid crystal molecules of the m×n'th pixel 113 align to four different orientations. A four-domain display is achieved.

[0028] In step S2, half a display frame time T After the scanning circuit 13 sending a scanning signal to the scan line Gn-1, the scanning circuit 13 sends a scanning signal to the scan line Gn. When the scanning signal switches the second TFT 115 on, the liquid crystal capacitor 116 discharges through the second TFT 115. As the switch-on resistance of the second TFT 115 is greater than that of the first TFT 114, when the second TFT 115 is switched on by the scanning signal, the liquid crystal capacitor 116 discharges incompletely. As the second TFT 115 is switched off, the liquid crystal capacitor 116 maintains a second gray voltage Vd2 lower than the first gray voltage Vd1. Thus, another four-domain display is achieved. Therefore, in the display frame time T of the VA-LCD device, the m×n'th pixel 113 achieves an eight-domain display.

[0029] In summary, for each pixel 113 of the VA-LCD device 1, in the sub-display frame time T1, the liquid crystal capacitor 116 maintains the first gray voltage Vd1, and in the sub-display frame time T2, the liquid crystal capacitor 116 maintains the second gray voltage Vd2. Then, the four-domain VA-LCD device 1 achieves an eight-domain display. Therefore, the VA-LCD device 1 reduces color shift, and achieves a higher display quality.

[0030] FIG. 8 is a schematic circuit diagram of a VA-LCD device according to a second embodiment of the present disclosure, differing from the VA-LCD device 1 of the first embodiment in the further inclusion of an assistant scanning circuit 24. The display panel 21 further includes a plurality of assistant scan lines Ga1~Gaj electrically connected to the assistant scanning circuit 24. The electrical characteristic of the first TFT 214 and the second TFT 215 are the same. In

each pixel 213, a gate of the second TFT 215 is electrically connected to a corresponding assistant scan line Gan.

[0031] FIG. 9 is a waveform graph of driving signals of the VA-LCD device 2 of FIG. 8. In operation of the VA-LCD device 2, in a display frame time T of the VA-LCD device, the scanning circuit 23 sends a first scanning signal Vg1 to the scan line Gn, and switches the first TFT 214 on. The liquid crystal capacitor 216 maintains a first gray voltage Vd1. After half a display frame time T, the assistant scanning circuit 24 sends a second scanning signal Vg2 lower than the first scanning signal Vg1 to the corresponding assistant scan line Gan. The second scanning signal Vg2 switches the second TFT 215 on, and the liquid crystal capacitor 216 discharges through the second TFT 215. Since the second scanning signal Vg2 is lower than the first scanning signal Vg1, the liquid crystal capacitor 216 maintains a second gray voltage Vd2 different from the first gray voltage Vd1.

[0032] In summary, the four-domain VA-LCD device 2 can achieve an eight-domain display, such that the VA-LCD device 2 can reduce color shift and improve display quality. The electrical characteristics of the first TFT 214 and the second TFT 215 are the same, making the VA-LCD device 2 easier to fabricate.

[0033] Alternatively, the VA-LCD device 1, 2 can be any PVA-LCD device, or any MVA-LCD device. A threefold or fourfold interlacing scanning method can also be applied in the VA-LCD device 1. In the VA-LCD device 2, the assistant scanning circuit 24 can also send a scanning signal having 1/3 display frame time delay to that sent by the scanning circuit 23. The time between the assistant scanning circuit 24 sending a scanning signal and that sent by the scanning circuit 23 can be between about 1/4 display frame time to about 3/4 display frame time.

[0034] It is to be further understood that even though numerous characteristics and advantages of preferred and exemplary embodiments have been set out in the foregoing description, together with details of the structures and functions of the embodiments, the disclosure is illustrative only; and that changes may be made in detail within the principles of the present disclosure to the full extent indicated by the broad general meaning of the terms in which the appended claims are expressed.

What is claimed is:

1. A vertical alignment liquid crystal display (VA-LCD) device, comprising:

a display panel comprising a plurality of pixels, each pixel comprising a liquid crystal capacitor, wherein, in a display frame time of the VA-LCD, the liquid crystal capacitor maintains a first gray voltage and a second gray voltage in succession, the first gray voltage being different from the second gray voltage.

2. The VA-LCD device of claim 1, wherein in the liquid crystal capacitor maintains the first gray voltage for a period lasting between about 1/4 display frame time to about 3/4 display frame time.

3. The VA-LCD device of claim 2, wherein each of the plurality of pixels further comprises a first thin film transistor (TFT) and a second TFT, the first gray voltage being applied to the liquid crystal capacitor through the first TFT, the second gray voltage being applied to the liquid crystal capacitor through the second TFT.

4. The VA-LCD device of claim 3, wherein the display panel further comprises a plurality of data lines, each of the plurality of pixels further comprises a common voltage, the

first gray voltage being applied to the liquid crystal capacitor through the plurality of data lines and the first TFT, the second gray voltage being applied to the liquid crystal capacitor through the common voltage and the second TFT.

5. The VA-LCD device of claim 4, wherein the display panel further comprises a plurality of scan lines intersecting the plurality of data lines, the plurality of scan lines and the plurality of data lines defining the plurality of pixels, wherein in each pixel, the common voltage being electrically connected to a drain of the second TFT, a source of the second TFT being electrically connected to the liquid crystal capacitor, a source of the first TFT being electrically connected to one of the plurality of data lines, a drain of the first TFT being electrically connected to the liquid crystal capacitor, a gate of the first TFT and a gate of the second TFT being electrically connected to the two scan lines adjacent to the pixel, respectively.

6. The VA-LCD device of claim 5, wherein a switch-on resistance of the second TFT is greater than that of the first TFT.

7. The VA-LCD device of claim 5 further comprises a scanning circuit being electrically connected to the plurality of scan lines, an interlacing scanning method being applied in the VA-LCD device.

8. The VA-LCD device of claim 4, wherein the display panel further comprises a plurality of scan lines and a plurality of assistant scan lines, wherein in each of the plurality of pixels, a drain of the second TFT being electrically connected to the common voltage, a source of the second TFT being electrically connected to the liquid crystal capacitor, a gate of the second TFT being electrically connected to one of the plurality of assistant scan lines, a source of the first TFT being electrically connected to one of the plurality data lines, a drain of the first TFT being electrically connected to the liquid crystal capacitor, a gate of the first TFT being electrically connected to one of the plurality of scan lines.

9. The VA-LCD device of claim 8 further comprises a scanning circuit and a assistant scanning circuit, the plurality of scan lines being electrically connected to the scanning circuit, the plurality of assistant scan lines being electrically connected to the assistant scanning circuit, the assistant scanning circuit sending a scanning signal to one of the plurality of assistant scan lines after the scanning circuit sending a scanning signal to a corresponding scan line.

10. The VA-LCD device of claim 9, wherein the scanning circuit sends a first scanning signal to one of the plurality of scan lines and the assistant scanning circuit sends a second scanning signal that is lower than the first scanning signal to the corresponding assistant scan line.

11. The VA-LCD device of claim 1, wherein the VA-LCD device is a multi-domain vertical alignment liquid crystal display device.

12. The VA-LCD device of claim 1, wherein the VA-LCD device is a patterned vertically aligned liquid crystal display device.

13. A method for driving a vertical alignment liquid crystal display (VA-LCD) device, the VA-LCD device comprising a display panel comprising a plurality of pixels, each pixel comprising a liquid crystal capacitor, the method comprising:

applying a first gray voltage to the liquid crystal capacitor;

applying a second gray voltage different from the first gray voltage, to the liquid crystal capacitor in a same display frame time of the VA-LCD.

14. The method of claim 13, wherein the liquid crystal capacitor maintains the first gray voltage for a period lasting between about $\frac{1}{4}$ display frame time to about $\frac{3}{4}$ display frame time.

15. The method of claim 13, wherein the liquid crystal capacitor maintains the first gray voltage for a period lasting $\frac{1}{2}$ display frame time.

16. The method of claim 13, wherein the liquid crystal capacitor maintains the first gray voltage for a period lasting $\frac{1}{3}$ display frame time.

17. The method of claim 15, wherein each of the plurality of pixels further comprises a first TFT and a second TFT, the first gray voltage being applied to the liquid crystal capacitor through the first TFT, the second gray voltage being applied to the liquid crystal capacitor through the second TFT.

18. The method for driving VA-LCD device of claim 17, wherein the display panel further comprises a plurality of data lines, each of the plurality of pixels further comprising a common voltage, the first gray voltage being applied to the liquid crystal capacitor through the plurality of data lines and the first TFT, the second gray voltage being applied to the liquid crystal capacitor through the common voltage and the second TFT.

19. The method for driving VA-LCD device of claim 18, wherein the display panel further comprises a scanning circuit, a assistant scanning circuit, a plurality of scan lines and a plurality of assistant scan lines, the plurality of scan lines being electrically connected to the scanning circuit, the plurality of assistant scan lines being electrically connected to the assistant scanning circuit, wherein in each of the plurality of pixels, a drain of the second TFT being electrically connected to the common voltage, a source of the second TFT being electrically connected to the liquid crystal capacitor, a gate of the second TFT being electrically connected to one of the plurality of assistant scan lines, a source of the first TFT being electrically connected to one of the plurality of data lines, a drain of the first TFT being electrically connected to the liquid crystal capacitor, a gate of the first TFT being electrically connected to one of the plurality of scan lines, the assistant scanning circuit sending a scanning signal to one of the plurality of assistant scan lines a half display frame time after that sent by the scanning circuit to the corresponding scan line.

* * * * *

专利名称(译)	垂直取向液晶显示装置及其驱动方法		
公开(公告)号	US20090284674A1	公开(公告)日	2009-11-19
申请号	US12/454450	申请日	2009-05-18
[标]申请(专利权)人(译)	群创光电股份有限公司		
申请(专利权)人(译)	群创光电股份有限公司.		
当前申请(专利权)人(译)	群创光电股份有限公司.		
[标]发明人	CHANG YUEH PING HUNG CHAO YI		
发明人	CHANG, YUEH-PING HUNG, CHAO-YI		
IPC分类号	G02F1/1343		
CPC分类号	G02F1/133707 G02F1/13624 G02F2203/30 G09G3/2025 G09G3/3659 G09G2300/0426 G02F1/136286 G09G2300/0842 G09G2310/0224 G09G2310/0251 G09G2320/028 G02F1/134309 G09G2300/0447 G02F1/136213 G02F1/1368		
优先权	200810067271.3 2008-05-16 CN		
其他公开文献	US8692752		
外部链接	Espacenet USPTO		

摘要(译)

垂直配向液晶显示装置 (VA-LCD) 包括显示面板。显示面板包括多个像素。每个像素单元包括液晶电容器。液晶电容器在VA-LCD的显示帧时间内保持两种不同的灰度电压。

