



(11) **EP 1 664 911 B1**

(12) **EUROPEAN PATENT SPECIFICATION**

(45) Date of publication and mention
of the grant of the patent:
22.04.2009 Bulletin 2009/17

(51) Int Cl.:
G02F 1/1335^(2006.01) **G02B 5/08**^(2006.01)
G09F 13/12^(2006.01) **A47G 1/02**^(2006.01)
G02F 1/1337^(2006.01)

(21) Application number: **04769836.0**

(86) International application number:
PCT/IB2004/051512

(22) Date of filing: **20.08.2004**

(87) International publication number:
WO 2005/024500 (17.03.2005 Gazette 2005/11)

(54) **MIRROR WITH BUILT-IN DISPLAY**
SPIEGEL MIT EINGEBAUTER ANZEIGE
MIROIR A AFFICHAGE INCORPORE

(84) Designated Contracting States:
**AT BE BG CH CY CZ DE DK EE ES FI FR GB GR
HU IE IT LI LU MC NL PL PT RO SE SI SK TR**

(74) Representative: **Damen, Daniel Martijn**
Philips
Intellectual Property & Standards
P.O. Box 220
5600 AE Eindhoven (NL)

(30) Priority: **09.09.2003 EP 03103324**

(43) Date of publication of application:
07.06.2006 Bulletin 2006/23

(56) References cited:
EP-A- 0 282 086

(73) Proprietor: **Koninklijke Philips Electronics N.V.**
5621 BA Eindhoven (NL)

- **PATENT ABSTRACTS OF JAPAN** vol. 2002, no. 03, 3 April 2002 (2002-04-03) -& JP 2001 318374 A (HITACHI LTD), 16 November 2001 (2001-11-16)
- **PATENT ABSTRACTS OF JAPAN** vol. 2002, no. 08, 5 August 2002 (2002-08-05) -& JP 2002 122860 A (JAMSEA MUTUAL AID CO LTD), 26 April 2002 (2002-04-26)
- **PATENT ABSTRACTS OF JAPAN** vol. 2002, no. 12, 12 December 2002 (2002-12-12) -& JP 2002 229494 A (SHIN ETSU POLYMER CO LTD), 14 August 2002 (2002-08-14)
- **PATENT ABSTRACTS OF JAPAN** vol. 1998, no. 09, 31 July 1998 (1998-07-31) -& JP 10 108769 A (ALMEX INC), 28 April 1998 (1998-04-28)

(72) Inventors:

- **NIEUWKERK, Armanda, C.**
NL-5656 AA Eindhoven (NL)
- **VAN DELDEN, Martinus, H., W., M.**
NL-5656 AA Eindhoven (NL)
- **VAN DEURZEN, Maria, H., W., A.**
NL-5656 AA Eindhoven (NL)

Note: Within nine months of the publication of the mention of the grant of the European patent in the European Patent Bulletin, any person may give notice to the European Patent Office of opposition to that patent, in accordance with the Implementing Regulations. Notice of opposition shall not be deemed to have been filed until the opposition fee has been paid. (Art. 99(1) European Patent Convention).

EP 1 664 911 B1

Description

[0001] The invention relates to a polarizing mirror for viewing purposes having a first plane reflecting light of a first kind of polarization to a viewing side, the mirror passing light of a second kind of polarization and being provided with a display device at its non-viewing side, which display device during use provides light of the second kind of polarization. A "mirror for viewing purposes" or "display mirror" in this application refers to a mirror, via which a person's eye (or an artificial eye like a (infra-red) camera lens) sees a reflected part of the outside world. As examples one may think of large mirrors, like bathroom mirrors, full-length mirrors in fitting rooms or even mirrored walls. Other examples are medium sized mirrors, like outside mirrors for trucks or dressing-table mirrors.

[0002] By "having a first plane reflecting light of a first kind of polarization" it is meant that a mirror plane acts as a polarizing plane. When in use, light within a certain range of wavelengths of light incident on a polarizing plane will be divided in two components one which is reflected by the polarizing plane and one of which passes through the polarizing plane. Generally most known is the division of light in two components having linearly polarized, mutually perpendicular directions of polarization. On the other hand the light may be divided in right-handed and left-handed circular or elliptical polarization.

[0003] A display mirror of the kind mentioned above is described in the pending European Applications Serial number 02076069.2, filed on March 18, 2002 and Serial number 02079306.3, filed on October 17, 2002 (= PH NL 02.1038). The mirror function is obtained by introducing a polarizing mirror or reflective polarizer instead of a partly reflecting layer in front of a display device.

[0004] JP2001318374 discloses a polarizing mirror having a first plane reflecting light of a first kind of polarization to a viewing side. The polarizing mirror passes light of a second kind of polarization and contains a display device at its non-viewing side. The display device provides light of a second kind of polarization. The disclosed device also has a polarization switching means which switchable between two optical states and contains a liquid crystal guest-host material between two substrates.

[0005] In general practice the reflectivity of such mirrors is chosen to be optimal, i.e. as high as possible. As a consequence preferably substantially all light, or as much light as possible should be reflected for optimal functioning. Nevertheless a mirror according to the invention reflects light of a first kind of polarization to a viewing side and passes light of a second kind of polarization, but moreover is provided with a display device at its non-viewing side, which display device during use provides light of the second kind of polarization.

[0006] The display device during use emits or reflects (polarized) light.

[0007] By adapting the polarization (direction) of the

light of the second kind of polarization to polarization (direction) of the polarized light emitted by the display a transmission factor of substantially 100% is achieved, resulting in a high contrast of displayed information with respect to reflected images.

[0008] However when part of the mirror is used as a display the mirror function remains active in the other part of the mirror plane. The resulting reflections cause a deterioration of the daylight visibility and contrast. On the other hand when used as a mirror, only one polarization component is reflected so the reflectivity is only approx. 50%. Moreover, when the mirror size is larger than the display size and the display is off, differences may be visible between the (dark) display and the mirror background outside the display area. To overcome these problems preferably a switchable optical element is present between the display device and the viewing side of the polarizing mirror.

[0009] In one embodiment e.g. when the display is a liquid crystal display device, the switchable optical element is a switchable $1/2 \lambda$ plate.

[0010] In a further, preferred embodiment the viewing side of the polarizing mirror is provided with a switchable polarizer, based for instance on a guest-host system.

[0011] A problem however, especially in the reflecting mode is the angle dependence of the switchable optical element, be it a switchable $1/2 \lambda$ plate or a guest-host system. These components are based on electrically anisotropic oriented LC molecules and even at high voltages these molecules (if the liquid crystal material has a positive electrical anisotropy) do not reach a direction perpendicular to the substrates due to anchoring at said substrates. This implies that from one direction a viewer can be looking along the axes of said molecules, whereas from another direction a viewer sees the display having less brightness.

[0012] The present invention has as one of its goals to overcome these problems at least partially. A further object is to enhance the reflectivity of such a mirror display.

[0013] To this end a polarizing mirror according to the invention has at its viewing side polarizing means which are switchable between two optical states, the polarizing means comprising a liquid crystal layer between two substrates, at least one of said substrates having orientating means to orient liquid crystal molecules during one of the optical states in at least two orientation directions on the same substrate.

[0014] By introducing different orientation directions (in different, patterned domains) the attenuation of undesired reflection is increased when the polarizing mirror display is used in the mirror-mode. The attenuation is very effective, especially when the switchable polarizer is based on a guest-host system.

[0015] Different orientation directions (domains) can be obtained by using techniques generally known in LCD technology, like rubbing in different directions, photo alignment (using masks), Langmuir-Blodgett layers, etcetera.

[0016] These and other aspects of the invention are apparent from and will be elucidated with reference to the embodiments described hereinafter.

[0017] In the drawings:

Figure 1 is a possible embodiment of a mirror device according to the invention, while

Figure 2 is a diagrammatic cross-section of a part of a mirror device according to the invention.

Figure 3 is a diagrammatic cross-section of a part of another mirror device according to the invention.

Figures 4 and 5 are a diagrammatic cross-section of a part of another mirror device to which the invention is applicable,

Figure 6 shows suitable dyes that can be added to liquid crystal mixtures to obtain a switchable polarizer, while

Figure 7 is a diagrammatic cross-section of a mirror device to explain the invention and

Figure 8 is a diagrammatic cross-section of a part of a mirror device according to the invention.

[0018] The Figures are diagrammatic and not drawn to scale. Corresponding elements are generally denoted by the same reference numerals.

[0019] Figure 1 shows a mirror device 1 for viewing purposes having on a glass plate 4 a mirror 2 reflecting light, so a person 3 sees his image 3' (and further background, not shown). According to the invention the mirror (plane) only reflects light of a first kind of polarization (direction), but passes light of a second kind of polarization (direction). Furthermore the mirror is provided with a display device 5 at its non-viewing side (see also Figure 2).

[0020] The display device 5 in this example is a liquid crystal display device having between two substrates (glass or plastic or any other suitable material) a liquid crystal material 6. Since most liquid crystal display devices are based on polarization effects the display 5 during use substantially emits polarized light. In general light from a backlight 10 is modulated by the liquid crystal display effect. Since the liquid crystal display device is based on a polarization effect the display 5 comprises a first polarizer 8 and a second polarizer (or analyzer) 9, which passes light of a certain polarization (direction).

[0021] This light of a certain polarization has the same (linear) polarization direction as the second kind of polarization (direction), so it passes the mirror (plane) 2 without any loss of light (100 % transmission).

[0022] Since most liquid crystal display devices are based on modulation of linearly polarized light, linear polarizers 8, 9 are used, and the mirror 2 also is a linear polarization selective mirror e.g. a stack of dielectric layers, each layer having an optical thickness of one-quarter of a selected wavelength (or a mean value for a spectrum), while the layers have selected refractive indices. Another possibility is the use of so-called wire grid polarizer (a grid of thin conducting wires) that is transmissive

for one polarization and reflective for the orthogonal polarization.

[0023] If the mirror and the display device are rotatable with respect to each other with respect to an axis substantially perpendicular to the first plane the transmission factor for the polarized light emitted by the display is variable, since it depends on the angle between the polarization (direction) of the modulated light and the polarization axis of the light which passes the mirror 2. In this way images from the display can be dimmed or completely turned off, if wanted, by simply rotating the mirror.

[0024] On the other hand in certain applications it may even be attractive to polarize light from e.g. an (O)LED or other display to obtain the effect of a high contrast of displayed information with respect to reflected images in mirror applications.

[0025] Figure 3 shows a part of a mirror according to the invention in which a liquid crystal display 11 is used, comprising a further optical element 12 viz. a $1/2 \lambda$ plate, which is placed between the linear polarization selective mirror 2 and a polarizer or a linear polarizing mirror 16. If necessary the device is provided with a reflector 13.

[0026] Figure 4 shows the working principle of this mirror. The display 11 emits linearly polarized light 15 of a first polarization direction 15', either directly or by having the light passing the polarizer or a linear polarizing mirror 16. The polarization directions of the mirrors 2, 16 make an angle of 90 degrees.

[0027] Incident light 20 reflects partly (one polarization direction, in this Example indicated as 20') on the mirror 2 (arrow 21). If the switchable half-lambda plate 12 is "off" (Figure 4a) or "inactive" the remaining part (other polarization direction, in this Example indicated as 20") passes said switchable half-lambda plate 12 and is reflected on the linear polarizing mirror 16. After reflection the reflected light having polarization direction 20" passes the switchable half-lambda plate 12 and the linear polarization selective mirror 2 again (arrow 22). As a result, substantially all incident light is then reflected.

[0028] In this situation the polarized light of polarization direction 15' from the display passes the linear polarizing mirror 16 and the linear polarization selective mirror 2 and the switchable half-lambda plate 12, but is blocked by the linear polarization selective mirror 2.

[0029] If the half lambda plate 12 is "on" (Figure 4b) or "active" it rotates the polarization direction (15") of the display light between both mirrors 2, 16 to the other polarization direction (15'), making the stack transparent for the emitted display light. In that case the polarization direction 20' of the incident light 20 will pass the switchable half-lambda plate 12 and not be reflected by the liquid crystal display 11. the other polarization direction indicated as 20" will be reflected by the linear polarizing mirror 16 (indicated as 20") and then pass the switchable half-lambda plate 12 and the linear polarization selective mirror 2 (arrow 23). So the device can be switched between a display state (half lambda plate "on", in this example transparent for emitted light) and a mirror state

(half lambda plate "off") reflecting all incident light.

[0030] A switchable half lambda plate can e.g. be realized with known LCD techniques by using a standard planar LCD cell with anti-parallelly rubbed orientation layer and filled with a liquid crystal such that the optical retardation $d \cdot \Delta n$ is equal to a range of about 200 to 450 nm. Alternatively, a vertically aligned LC cell can be used with some preorientation with respect to the switching direction. In that case higher birefringent LC mixtures can be used while a modulation voltage adjusts the retardation.

[0031] In another embodiment the switchable LCD cell substrates are provided with electrodes and orientation layers, in which the direction of orientation make an angle of 90° with each other. This so-called twisted nematic (TN) mode is especially beneficial when the the product of thickness and birefringence of the liquid crystal is in the so-called first minimum of the Gooch and Tarry curve making the halfwave function insensitive for the wavelength of the visible light.

[0032] Also additional films may be utilized in order to improve the effect on viewing angle. Often when a switchable retarder is brought in between the front reflective polarizer and the second reflective polarizer the initially neutrally colored image will add some color at wider viewing angles. This effect is well understood in terms of angular dependent birefringence of the liquid crystal material and can be compensated for by additional retardation layer such as a negative C-plate or tilted retardation layers.

[0033] In this respect also an Plane Switching (IPS) mode may be used, in which in the "off" state LC molecules are parallel to a polarizer (no retardation) while in the "on" state the LC molecules are aligned at 45 degrees to the polarizers (half lambda plate)

[0034] Figure 5 shows a further embodiment, which is very suitable to reduce reflections. The switchable optical element now is a switchable polarizing filter 14 provided at the viewing side of the polarizing mirror. The display 11 emits linear polarized light 15 of a first polarization direction 15'. The polarization direction of the filter 14 and that of the polarizing mirror 2 is the same (15'). So, independently of the state of the polarizing filter 14, the emitted light from the display stack is transmitted and not affected.

[0035] Incident light 20 partly (one polarization direction, in this Example indicated as 20") passes the switchable polarizing filter 14. If the switchable polarizing filter 14 is "off" (Figure 5a) this part of the light, indicated as 20" is reflected on the linear polarization selective mirror 2. After reflection (arrow 21) the reflected light having polarization direction 20" passes the switchable polarizing filter 14 again (arrow 22). The other part of the light (having polarization direction 20') is transmitted through the mirror 2 and ultimately absorbed in the bulk of the display. As a result, about half of the incident light is then reflected.

[0036] If the polarizing filter 14 is "on" (Figure 5b), it

now absorbs the light having polarization direction 20" that in Figure 5a was passed and reflected at the mirror 2. The other component (20') passes the mirror 2 and is absorbed in the display again. As a result, no incident light is reflected. Consequently the stack can be switched between a display state (filter "on") suppressing reflections and a mirror state (filter "off") (partly) reflecting incident light.

[0037] For the switchable polarizer several possibilities exist. In one embodiment it is built-up from passive linear polarizer(s) and a switchable half lambda retarder similar to the combination in Figure 4 of the switchable half-lambda plate 12 and the linear polarizing mirror 16. Such a stack will always be a polarizer, but with a switchable orientation axis.

[0038] Another switchable polarizer is provided by the so-called Guest-Host system: dichroic dye molecules are dissolved in a nematic or chiral nematic liquid crystal (LC) layer. The dye molecules (Guest) are oriented by the presence of the LC molecules (Host). Applying an electric field to the layer will re-orient the LC molecules and the dye molecules will follow this re-orientation. Such a stack will either absorb light of one polarization or be transparent. Some suitable dyes that can be added to liquid crystal mixtures are shown in Figure 6.

[0039] In the embodiment of Figures 4 and 5 when the switchable optical element (polarizing filter 14, half-lambda plate 12) is "off" no power is required, resulting in full reflection of the incident light (in this state the display itself may be off, since no light is transmitted, saving energy). In the "display state" the switchable optical element polarizing filter 14, half-lambda plate 12) is "on", allowing all light from the display to pass while suppressing all incident light.

[0040] Figure 7 shows a problem, which occurs when the device of Figure 5 uses such a half-lambda plate or a switchable polarizer, provided by a guest-host system. These components are based on anisotropically oriented LC molecules 25, the orientation properties due to aligning at walls 26, 27 being similar to those of LCDs, viz. angular preference for one specific direction 28, dependent on orientation conditions, voltages etcetera. Due to this angle dependence a viewer 29 can be looking at the mirror instead of the emitting display, whereas another viewer 29' sees the display and not the mirror.

[0041] To a lesser extent this also occurs in the device of Figure 3 due to the switchable half lambda plate being realized with LCD techniques.

[0042] According to the invention making domains in the alignment layer on which the LC molecules orient provides a multiple domain structure (a patterned structure). Methods to obtain multiple domain structures include are well known in the LCD art and comprise a.o. photo alignment by use of mask exposure and rubbing in combination with lithography between the various rubbing procedures.

[0043] The result is shown in Figure 8, which shows a device having two or more domains with orientations op-

timized for different viewing directions 28, 28' combined. Both viewers 29, 29' now see the display and not the mirror. In principle this difference in orientation is done on a picture element level. Also more than two, e.g. four orientation directions are possible.

[0044] Another advantage, especially, when using a switchable polarizer, provided by a guest-host system, is the attenuation of undesired reflections, especially when used in the display-mode. By introducing a multiple domain structure 30^a, 30^b in the polarizing filter 14 (or in half-lambda plate 12) however, the dye molecules 31 are oriented such that they absorb a greater part of the oblique incident light (see Figure 8a). Light ray 32 is attenuated by molecules 31 oriented along direction 33 of domain 30^b. In a similar way the light ray 34 (which is the reflected part of ray 32 after passing mirror 2) is attenuated by molecules 31 oriented along direction 35 of domain 30^a. In the single domain configuration of Figure 7 the light ray 34 would have been parallel to or nearly parallel to the molecules 31 oriented along direction 35 of domain 30^a, giving hardly further attenuation.

[0045] Thus the multiple domain guest-host system attenuates these reflections in any direction other than the viewing direction (arrows 36). Thereby multiple domains in a guest-host system dramatically contribute to improved contrast.

[0046] In the mirror mode (see Figure 8b) the guest host system is made inactive by aligning the dye molecules parallel to the viewing direction, leading to an optimum mirror image (arrows 37). This alignment resembles the state of the multiple domains in normal LCD displays and the multiple domain state is almost lost.

[0047] The protective scope of the invention is not limited to the embodiments described. For instance, since the mirror 2 has a polarizing effect the second polarizer (or analyzer) 9 in Figure 2 may be deleted, if wanted. If necessary the glass plate 4 and mirror 2 may be interchanged in certain applications.

[0048] Although a backlit transmissive liquid crystal display device has been described, the use of reflective liquid crystal display devices is not excluded.

[0049] On the other hand as mentioned light from e.g. an (O)LED may be polarized or it may even be attractive to use other display effects to obtain the effect of a high contrast of displayed information with respect to reflected images in mirror applications.

[0050] Also, as mentioned in the introduction, more than one display can be integrated in the mirror, whereas many other applications areas can be thought of (rear view mirrors, fitting rooms, etcetera). In some applications, if a matrix form is used, with adequate driving circuitry the switching between mirror-state and display state can be done locally.

[0051] Apart from this certain elements may be combined into one, e.g. combinations of the mirror 2 and the switchable half-lambda plate 12 or the switchable polarizer 14 may be thought of.

[0052] The invention resides in each and every novel

characteristic feature and each and every combination of characteristic features. Reference numerals in the claims do not limit their protective scope. Use of the verb "to comprise" and its conjugations does not exclude the presence of elements other than those stated in the claims. Use of the article "a" or "an" preceding an element does not exclude the presence of a plurality of such elements.

Claims

1. A polarizing mirror (1) for viewing purposes having a first plane (2) reflecting light of a first kind of polarization (20') to a viewing side, the mirror passing light of a second kind of polarization (20'') and being provided with a display device (5) at its non-viewing side, which display device during use provides light of the second kind of polarization, the polarizing mirror at its viewing side having polarizing means (14) being switchable between two optical states, comprising a liquid crystal layer (7) between two substrates (26,27) **characterised in that** at least one of said substrates having orientating means to orient liquid crystal molecules (25) during one of the optical states in at least two orientation directions on the same substrate.
2. A polarizing mirror as claimed in claim 1 in which the substrate for each area related to a picture element of the display device has domains (30) having different orientation directions.
3. A polarizing mirror as claimed in claim 1 in which the liquid crystal layer between the two substrates comprises a dye (31).
4. A polarizing mirror as claimed in claim 1 in which the switchable polarizing comprises a patterned $\frac{1}{2} \lambda$ retarder and a polarizer.

Patentansprüche

1. Polarisierender Spiegel (1) für Betrachtungszwecke mit einer ersten Ebene (2), die Licht einer ersten Art von Polarisation (20') zu einer Betrachtungsseite reflektiert, wobei der Spiegel Licht einer zweiten Polarisationsart (20'') durchlässt, wobei dieser Spiegel an der Nicht-Betrachtungsseite mit einer Wiedergabeanordnung (5) versehen ist, wobei diese Wiedergabeanordnung im Betrieb Licht der zweiten Polarisationsart liefert, wobei der polarisierende Spiegel an der Betrachtungsseite Polarisierungsmittel (14) aufweist, die zwischen zwei optischen Zuständen umschaltbar sind, mit einer Flüssigkristallschicht (7) zwischen zwei Substraten (26, 27), **dadurch gekennzeichnet, dass** wenigstens eines der genann-

ten Substrate Ausrichtmittel aufweist zum Ausrichten von Flüssigkristallmolekülen (25) in einem der optischen Zuständen in wenigstens zwei Orientierungsrichtungen auf demselben Substrat.

5

2. Polarisierender Spiegel nach Anspruch 1, wobei das Substrat für jedes Gebiet in Bezug auf ein Bildelement der Wiedergabeordnung Domänen (30) mit verschiedenen Orientierungsrichtungen hat.

10

3. Polarisierender Spiegel nach Anspruch 1, wobei die Flüssigkristallschicht zwischen den zwei Substraten einen Farbstoff (31) aufweist.

4. Polarisierender Spiegel nach Anspruch 1, wobei der umschaltbare polarisierende Spiegel einen mit einem Muster versehenen $\frac{1}{2} \lambda$ Reaktionshemmer und einen Polarisator aufweist.

20

Revendications

1. Miroir polarisant (1) pour des buts de visualisation ayant un premier plan (2) qui réfléchit de la lumière d'un premier genre de polarisation (20') vers un côté de visualisation, le miroir faisant passer de la lumière d'un deuxième genre de polarisation (20'') et étant pourvu d'un dispositif d'affichage (5) de son côté de non-visualisation, lequel dispositif d'affichage fournit, lors de l'utilisation, de la lumière du deuxième genre de polarisation, le miroir polarisant ayant, de son côté de visualisation, des moyens polarisants (14) qui sont commutables entre deux états optiques, comprenant une couche à cristaux liquides (7) entre deux substrats (26, 27), **caractérisé en ce qu'**au moins un desdits substrats présente des moyens d'orientation afin d'orienter des molécules à cristaux liquides (25) pendant un des états optiques dans au moins deux directions d'orientation sur le même substrat.

40

2. Miroir polarisant selon la revendication 1, dans lequel le substrat pour chaque zone ayant rapport à un élément d'image du dispositif d'affichage présente des domaines (30) ayant des directions différentes d'orientation.

45

3. Miroir polarisant selon la revendication 1, dans lequel la couche à cristaux liquides entre les deux substrats comprend un colorant (31).

50

4. Miroir polarisant selon la revendication 1, dans lequel la polarisation commutable comprend un retardateur mis en configuration $\frac{1}{2} \lambda$ et un polariseur.

55

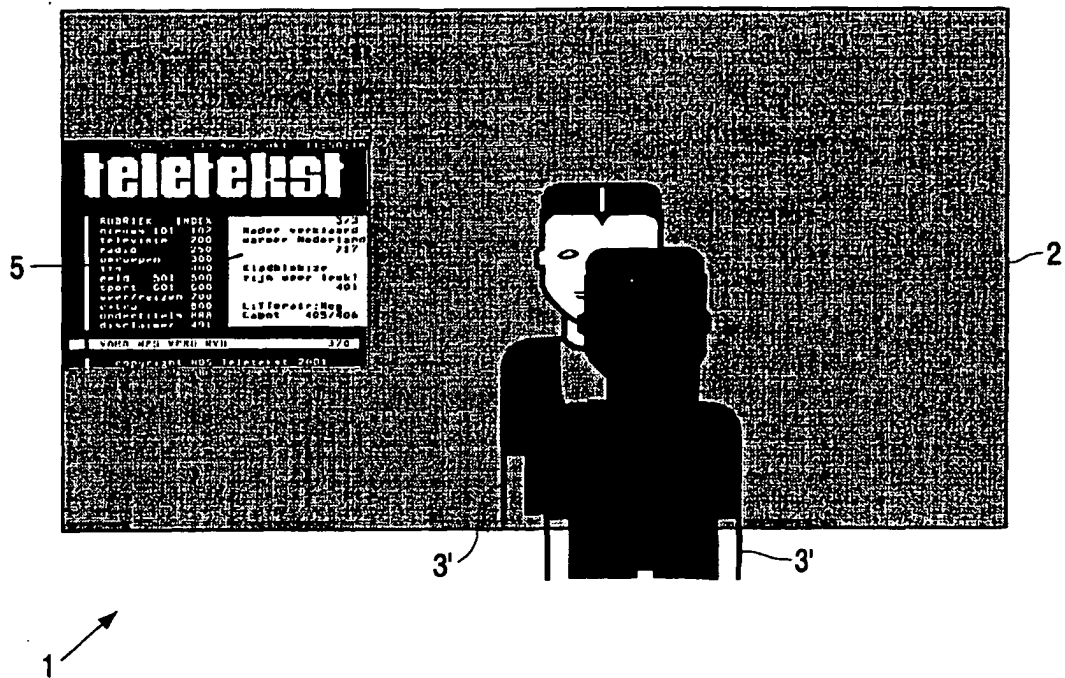


FIG. 1

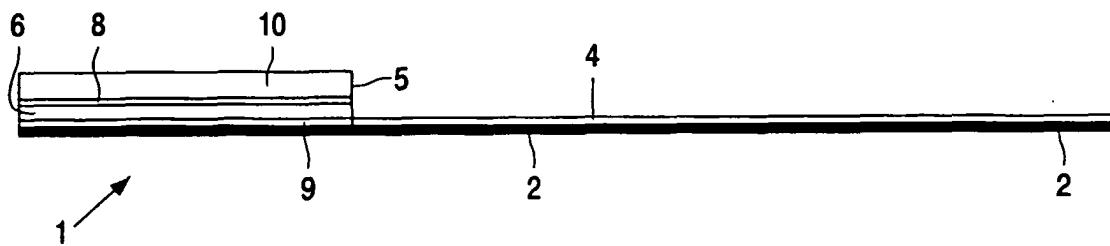


FIG. 2

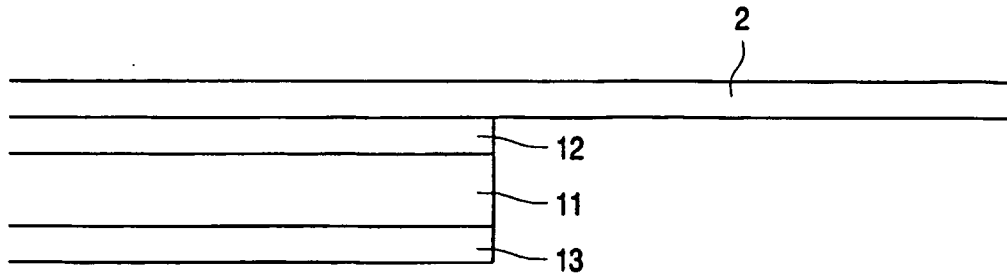


FIG. 3

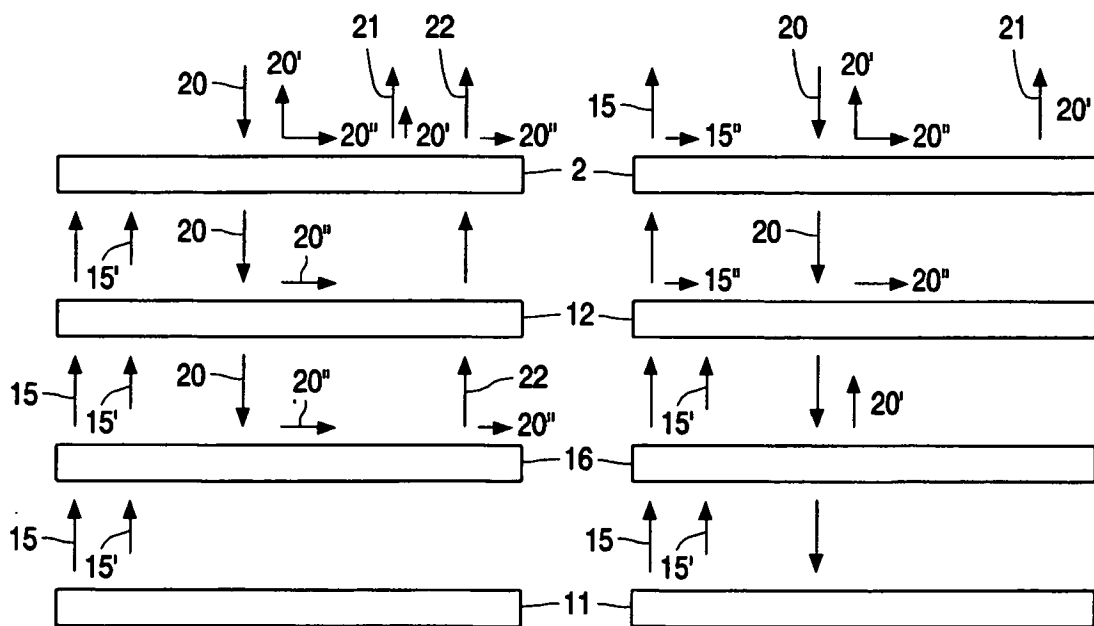


FIG. 4a

FIG. 4b

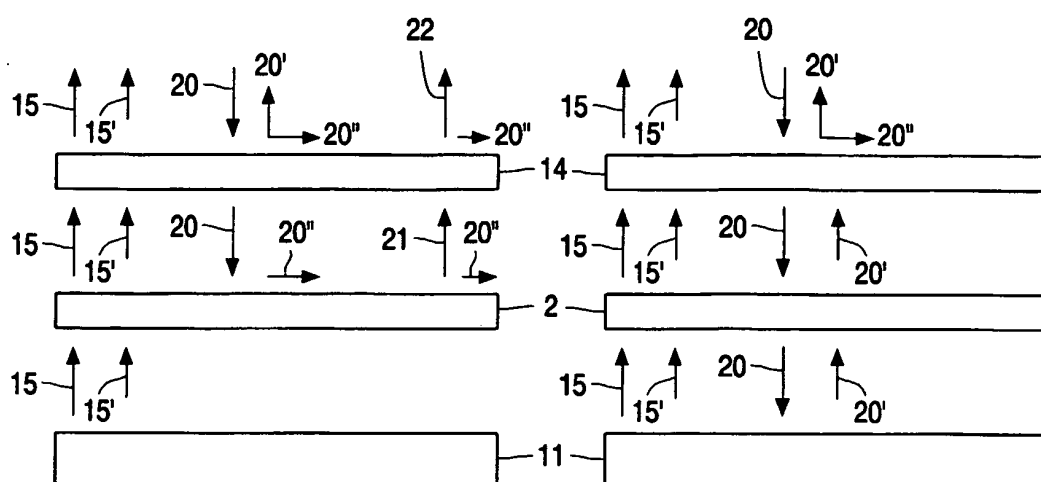


FIG. 5a

FIG. 5b

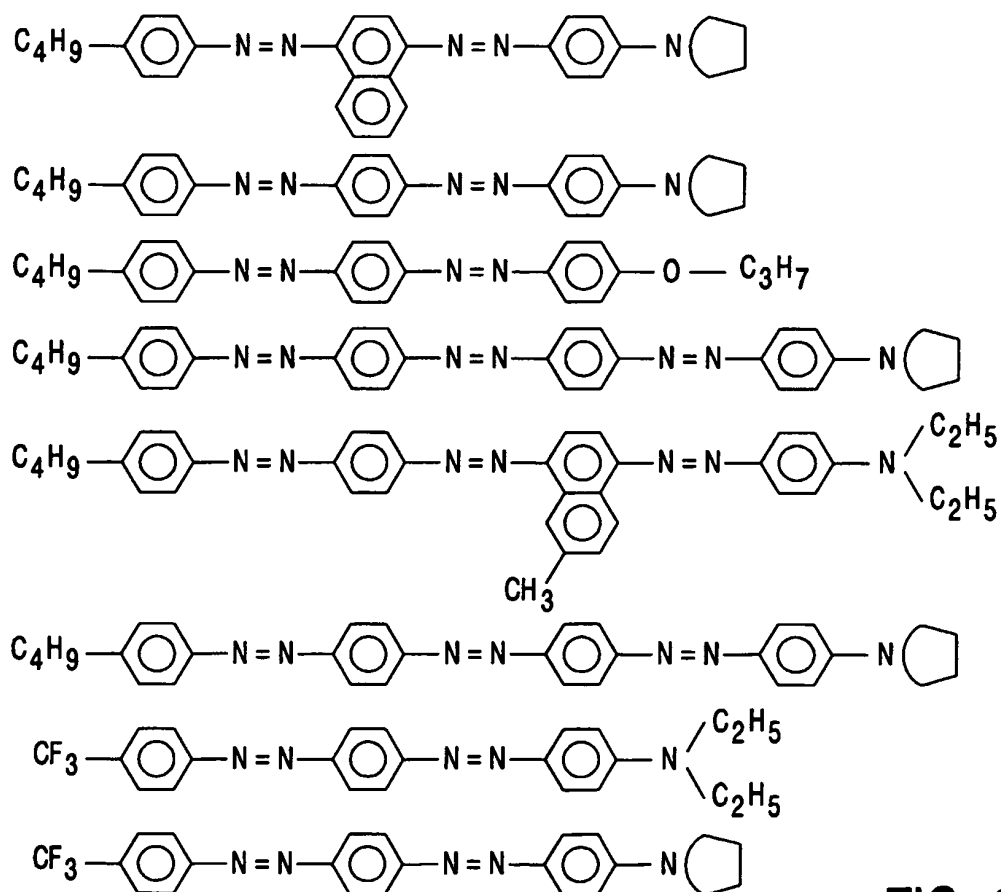


FIG. 6

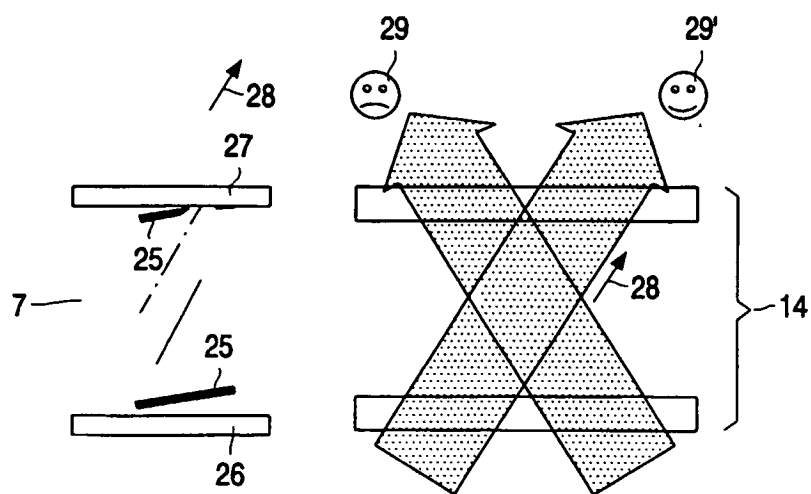


FIG. 7

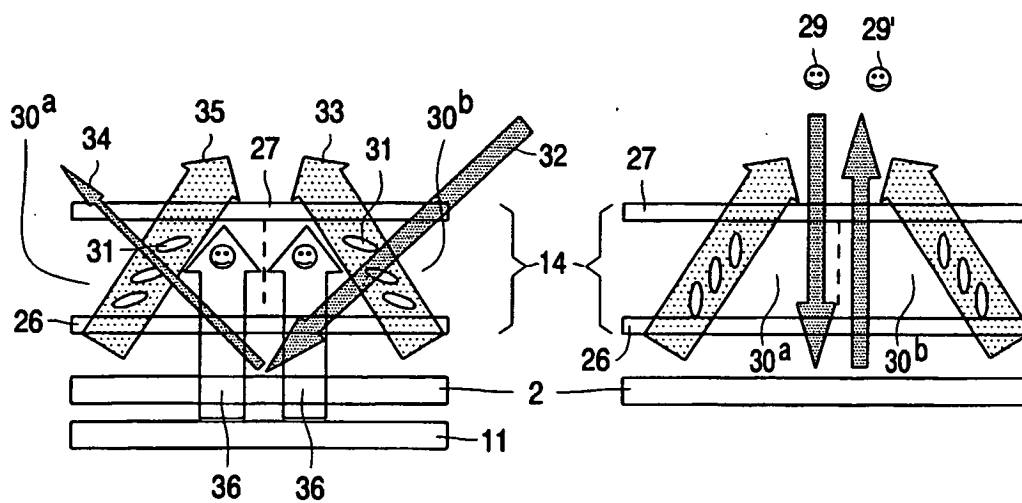


FIG. 8a

FIG. 8b

REFERENCES CITED IN THE DESCRIPTION

This list of references cited by the applicant is for the reader's convenience only. It does not form part of the European patent document. Even though great care has been taken in compiling the references, errors or omissions cannot be excluded and the EPO disclaims all liability in this regard.

Patent documents cited in the description

- EP 02076069 A [0003]
- EP 02079306 A [0003]
- NL 021038 [0003]
- JP 2001318374 B [0004]

专利名称(译)	带内置显示屏的镜子		
公开(公告)号	EP1664911B1	公开(公告)日	2009-04-22
申请号	EP2004769836	申请日	2004-08-20
[标]申请(专利权)人(译)	皇家飞利浦电子股份有限公司		
申请(专利权)人(译)	皇家飞利浦电子N.V.		
当前申请(专利权)人(译)	皇家飞利浦电子N.V.		
[标]发明人	NIEUWKERK ARMANDA C VAN DELDEN MARTINUS H W M VAN DEURZEN MARIA H W A		
发明人	NIEUWKERK, ARMANDA, C. VAN DELDEN, MARTINUS, H., W., M. VAN DEURZEN, MARIA, H., W., A.		
IPC分类号	G02F1/1335 G02B5/08 G09F13/12 A47G1/02 G02F1/1337 G02B5/30		
CPC分类号	G02B5/3016 A47G1/02 G02F1/133536 G02F1/133753 G02F2001/133562		
代理机构(译)	DAMEN , DANIEL马亨		
优先权	2003103324 2003-09-09 EP		
其他公开文献	EP1664911A1		
外部链接	Espacenet		

摘要(译)

一种镜子装置 (1) , 它可以同时用于显示目的, 基于例如LCD显示器 (5) , 在其前面放置有偏振镜 (2) 。偏振镜 (2) 具有这样的特性, 即它不会干扰从显示器到观察者 (3) 的光的传输, 但确实反射入射光。克服了与放置在偏振镜 (2) 前面的可切换光学部件 (14) 相关的组合视角和反射问题。

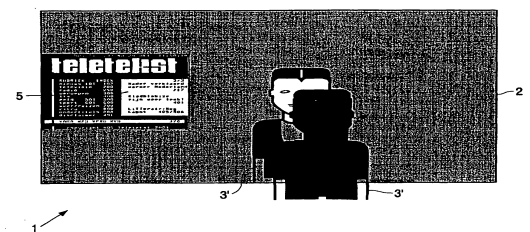


FIG. 1

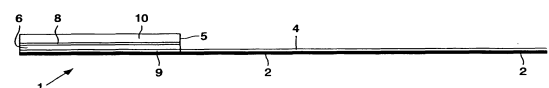


FIG. 2