

(19) World Intellectual Property Organization  
International Bureau



(43) International Publication Date  
25 May 2001 (25.05.2001)

PCT

(10) International Publication Number  
**WO 01/37249 A2**

(51) International Patent Classification<sup>7</sup>: **G09G 3/00**

(21) International Application Number: **PCT/EP00/11250**

(22) International Filing Date:  
10 November 2000 (10.11.2000)

(25) Filing Language: English

(26) Publication Language: English

(30) Priority Data:  
11/321901 12 November 1999 (12.11.1999) JP

(71) Applicant (for all designated States except US): **KONINKLIJKE PHILIPS ELECTRONICS N.V.** [NL/NL];  
Groenewoudseweg 1, NL-5621 BA Eindhoven (NL).

(72) Inventors; and

(75) Inventors/Applicants (for US only): **HIRANO, Satoshi**

[JP/NL]; Prof. Holstlaan 6, NL-5656 AA Eindhoven (NL).  
**YASUI, Masaru** [JP/NL]; Prof. Holstlaan 6, NL-5656 AA  
Eindhoven (NL). **KAMIYA, Takeo** [JP/NL]; Prof. Holst-  
laan 6, NL-5656 AA Eindhoven (NL).

(74) Agent: **RAAP, Adriaan, Y.**; Internationaal Octrooibureau  
B.V., Prof. Holstlaan 6, NL-5656 AA Eindhoven (NL).

(81) Designated States (national): KR, US.

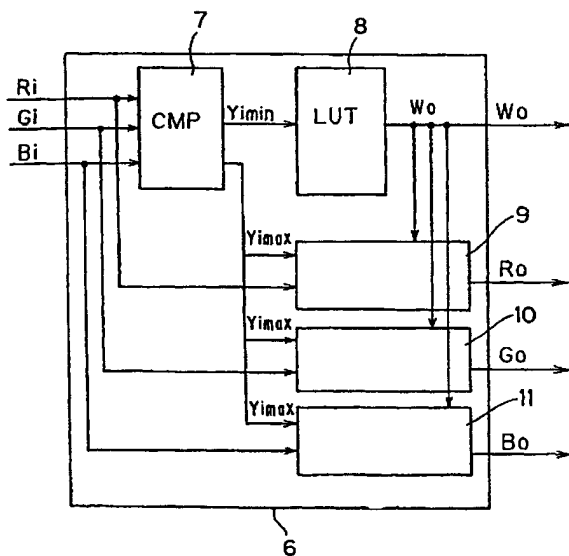
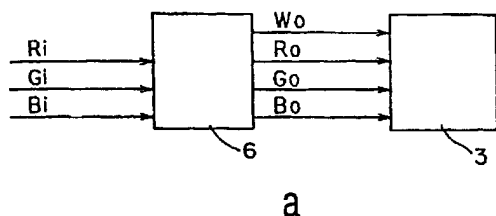
(84) Designated States (regional): European patent (AT, BE,  
CH, CY, DE, DK, ES, FI, FR, GB, GR, IE, IT, LU, MC,  
NL, PT, SE, TR).

**Published:**

— Without international search report and to be republished  
upon receipt of that report.

For two-letter codes and other abbreviations, refer to the "Guid-  
ance Notes on Codes and Abbreviations" appearing at the begin-  
ning of each regular issue of the PCT Gazette.

(54) Title: **LIQUID CRYSTAL DISPLAY APPARATUS**



(57) Abstract: In an RGBW-type liquid crystal display device, luminance is improved by the addition of W sub-pixels while an image is displayed without any change in chromaticity of halftones. Digital corrected values for red, green and blue are obtained by adding a predetermined digital value for driving a W sub-pixel to each of RGB digital values which correspond respectively to pixels of an acquired image. A converting calculation is effected on the digital corrected values such that the ratio of these digital corrected values for red, green and blue is made equal to the ratio of the red, green and blue digital values corresponding to the pixels of said acquired image. The RGBW sub-pixels are driven with the converted values and the predetermined digital value for driving W sub-pixel to thereby display an image.

## Liquid crystal display apparatus

This invention relates to a liquid crystal display apparatus capable of displaying color images.

5           In recent years, liquid crystal display apparatuses capable of displaying color images have been widely used as display apparatuses, for example, for personal computers, video cameras and car navigation systems.

          A Liquid crystal display apparatus of the RGBW type (hereinafter referred to as "an RGBW-type liquid crystal display apparatus"), on which a transparent filter (W) is  
10   arranged in addition to an RGB filter of the conventional RGB type, has been proposed in Japanese Patent Application Laid-open No.10998/1998 as a method for improving luminance of pixels of a liquid crystal panel of such liquid crystal display apparatus.

          However, even if the transparent filter is added in order to improve luminance, the ratio of red, blue and green of the original image will be changed, since the white color is  
15   mixed in all display colors. As a result, the color purity (color saturation) of a displayed image is reduced with respect to the original image, so that a chromaticity will be changed, in particular, in halftones.

20           Accordingly, an object of the invention is to provide an RGBW-type liquid crystal display apparatus in which a chromaticity is not changed even in halftones, by adding a white component to a red component, a green component and a blue component of an original input image for improving luminance thereof and thereafter further converting the ratio of these red, green and blue components after the addition of the white component into  
25   the ratio of the red, green and blue components of the original image to drive each RGBW sub-pixel.

          In the liquid crystal display apparatus according to the invention, the chromaticity of halftones of the original image will not change even when a white component

is added to each component of red, blue and green colors of the original image to improve the luminance, thus the above object being achieved.

These and other aspects of the invention are apparent from and will be elucidated with reference to embodiments described hereinafter with reference to the  
5 accompanying drawings, in which:

Fig. 1 is a block diagram showing the constitution of a liquid crystal display apparatus 100 according to a preferred embodiment of the invention;

10 Fig. 2 is a top plane view of the liquid crystal panel 1 of Fig. 1, in which the arrangement of sub-pixels, gate buses and source buses are illustrated;

Fig. 3 is a block diagram schematically illustrating a source driver 3 and a decoder 6 shown in Fig.1;

Fig. 4 is an illustration which explains the function of the preferred  
15 embodiment; and

Fig. 5 is a graph which explains a modification of the embodiment.

These Figures are diagrammatic and not to scale, and wherein corresponding  
20 components are generally denoted by the same reference numbers.

A preferred embodiment of a liquid crystal display apparatus according to the invention will now be described.

Fig. 1 is a block diagram showing the constitution of a liquid crystal display apparatus 100 according to an embodiment of the invention. This liquid crystal display  
25 apparatus 100 is provided with a liquid crystal panel 1.

Fig. 2 is a top plane view of this liquid crystal panel 1 in which a horizontal cross-section of the panel is schematically shown.

This liquid crystal panel 1 is provided with gate buses G1 to Gm (m: a natural number) each extending in a row direction and source buses S1 to Sn (n: a natural number)  
30 each extending in a column direction as shown in Fig. 2. The gate buses G1 to Gm are connected to a gate driver 2, and the source buses S1 to Sn are connected to source drivers 3.

A sub-pixel L<sub>ij</sub> of R (red), G (green), B (blue) or W (white) is disposed within each area defined by the gate buses G<sub>i</sub> and G<sub>i+1</sub> (i = 1 to m) and the source buses S<sub>j</sub> and S<sub>j+1</sub> (j = 1 to n).

A TFT (thin film transistor)  $Q_{ij}$  is arranged in the vicinity of each intersection of the gate bus  $G_i$  and the source bus  $S_j$ .

Furthermore, the gate bus  $G_i$  is connected to a gate of the TFT  $Q_{ij}$ , the source bus  $S_j$  to a source of the TFT  $Q_{ij}$ , and a display electrode of the sub-pixel  $L_{ij}$  to a drain of the TFT  $Q_{ij}$ .

Opposed to the display electrode of each sub-pixel  $L_{ij}$  is a common electrode which is connected to a common voltage supply circuit (not shown).

When the sub-pixels are arranged in the form of vertical stripes as shown in Fig. 2, color filters for RGBW are arranged in the following manner with respect to each sub-pixel  $L_{ij}$ , wherein one pixel is constituted by four sub-pixels of RGBW.

R: $L_{ij}$  ( $i=1, 2, 3, \dots, m-1$ ;  $j=1, 5, 9, \dots, n-3$ )

G: $L_{ij}$  ( $i=1, 2, 3, \dots, m$ ;  $j=2, 6, 10, \dots, n-2$ )

B: $L_{ij}$  ( $i=1, 2, 3, \dots, m$ ;  $j=3, 7, 11, \dots, n-1$ )

W: $L_{ij}$  ( $i=1, 2, 3, \dots, m-1$ ;  $j=4, 8, 12, \dots, n$ )

In this liquid crystal panel 1, a TFT substrate (not shown) on which the sub-pixel electrodes are formed, a color filter substrate on which the common electrode is formed and a glass substrate or the like are arranged in a direction perpendicular to a surface of the panel and a liquid crystal is filled in a space between the substrates.

The description of the liquid crystal display apparatus 100 will be continued with reference to Fig.1 again.

The gate driver 2 and the eight source drivers 3 are arranged around the liquid crystal panel 1. Each source driver 3 comprises amplifiers, DACs (DA converters) and latches, all of which are not shown. A decoder 6 is connected to the eight source drivers 3. This decoder 6 is connected to an image data holding section 5 for converting an input signal to digital data, and receives therefrom eight-bit sub-pixel data of the acquired image.

This liquid crystal display apparatus 100 further comprises a signal control section 4. This signal control section 4 feeds a power supply voltage to the gate driver 2 and the source drivers 3, and supplies control signals to the gate driver 2 and the source drivers 3.

The liquid crystal display apparatus 100 also comprises a reference potential generating circuit (not shown) for applying a reference potential to each source driver 3.

The operation of the liquid crystal display apparatus 100 shown in Fig. 1 will be described below.

The control signals are supplied from the signal control section 4 to the gate driver 2 and the respective source drivers 3. The gate driver 2 transmits, based on the control

signal, to the respective gate buses (refer to Fig. 2) signals for turning TFTs Q<sub>ij</sub> into the on condition.

When the control signal is supplied to each source driver 3, a latch portion (not shown) of each source driver 3 latches, based on the above control signal, eight-bit sub-pixel data (hereinafter referred to as “sub-pixel output luminance data R<sub>o</sub>, G<sub>o</sub>, B<sub>o</sub> and W<sub>o</sub>”) which have been obtained by the decoder 6 as signals for RGBW sub-pixels by performing a predetermined calculation (described later) on the data of image data RGB (hereinafter referred to as “sub-pixel input data R<sub>i</sub>, G<sub>i</sub>, and B<sub>i</sub>”) constituting the digital image as held in the image data holding section 5.

The sub-pixel data latched in the latch portion are sequentially supplied to a DAC portion (not shown). The signal control section 4 also outputs a polarity control signal for controlling whether the DAC portion selects a potential from the positive polarity reference potential generated by the reference potential generating circuit or a potential from the negative polarity reference potential generated by the reference potential generating circuit. This polarity control signal is input to the DAC portion. The DAC portion selects, based on the input polarity control signal and the sub-pixel output luminance data, a potential from the potential generated by the reference potential generating circuit which corresponds to the RGBW sub-pixel output luminance data.

When a potential is thus selected in the DAC portion, the DAC portion divides a voltage of the selected reference potential by a resistance division into appropriate steps so as to obtain a desired gradation. Thereafter, the divided voltage is current-amplified by an amplifier (not shown) and transmitted to a corresponding one of the source buses S<sub>1</sub> to S<sub>n</sub> (refer to Fig. 2). When TFTs are rendered on by a signal transmitted to any one of the gate buses G<sub>1</sub> to G<sub>m</sub>, the signal transmitted to the source bus and representing the potential is transferred through the above TFT to the corresponding pixel electrode.

In this manner, a potential corresponding to the sub-pixel data is given to each sub-pixel electrode. Therefore, a voltage is applied to each portion of the liquid crystal layer which is sandwiched between the common electrode and a respective one of the sub-pixel electrodes, so that the liquid crystal layer is driven in accordance with the potentials applied to the respective sub-pixel electrodes, whereby an image is displayed on the liquid crystal panel 1 in accordance with the principle of additive color mixing.

A preferred embodiment of the calculation processing performed in the above-described decoder 6 will now be described with reference to Figs.3(a) and 3(b) and mathematical formulas (1) to (5).

As shown in Fig. 3(a), the decoder 6 has a function of receiving the sub-pixel input data Ri, Gi, and Bi from the image data holding section 5 (Fig. 1), obtaining from these data the luminance data Wo for the luminance-enhancing sub-pixel and the sub-pixel output luminance data Ro, Go, Bo and Wo by calculation, and outputting these data to the source driver 3. Alternatively, the decoder 6 may be arranged to receive the sub-pixel input data Ri, Gi, and Bi from the image data holding section 5, to convert the data into values in the luminance dimension and then to perform the calculation.

In general, there is a relationship  $Y=kDig^{2.2}$  (k is a constant of proportion) between a digital value Dig (an digital input data) and luminance Y in a display for a computer. In the calculation processing according to the present embodiment, a calculation which will be described later can also be performed using this luminance dimension.

However, by the conversion into such luminance dimension an eight-bit digital signal will become a value of the order of 16 bits, and as a result, a circuit to be used will become more sophisticated and large, whereby the cost will be increased.

For this reason, the calculation may be performed on the digital value, as it is, without any conversion of the above dimension in order to simplify the circuit. Even if the calculation is simplified, the influence on the quality of the displayed image will not be so large as to cause any trouble, and the quality may be acceptable in the practical use. Moreover, various calculation formulas according to the invention described herein can be explained based on the same principles regardless of the dimension of each data of red, blue and green.

Accordingly, the digital input value would be used as it is for the sake of simplify in the following description of the embodiment.

The internal structure and the operation of the decoder 6 will be described with reference to Fig.3 (b).

The decoder 6 is provided with a comparator 7, a look-up table 8, a red calculating circuit 9, a blue calculating circuit 10 and a green calculating circuit 11 as shown in Fig. 3(b).

The comparator 7 receives sub-pixel input data Ri, Gi, and Bi from the image data holding section 5 and then compares magnitudes of the data values of Ri, Gi and Bi to one another. The comparator 7 then obtains the maximum and minimum values of the data values of Ri, Gi and Bi as its comparison results, and outputs the minimum value to the look-up table 8 as Yimin and outputs the maximum value to the red calculating circuit 9, the blue calculating circuit 10 and the green calculating circuit 11 as Yimax.

The look-up table 8 receives the above minimum value  $Y_{\min}$  and converts it into luminance data  $W_o$  for the luminance-enhancing sub-pixel.

This conversion in the look-up table 8 is performed by using PROM in which calculation results of a function  $W_o = f(Y_{\min})$  for each value of a variable  $Y_{\min}$  are stored in addresses for  $Y_{\min}$ , wherein  $Y_{\min}$  ranges from zero to 255 when each sub-pixel is expressed in 256-step gradation. Alternatively, this conversion may be performed using a calculating circuit.

On the other hand, each of the red calculating circuit 9, the blue calculating circuit 10 and the green calculating circuit 11 performs a calculation according to a respective one of the following formulas with a respective value of data of the  $R_i$ ,  $G_i$ , and  $B_i$ , the  $Y_{\max}$  value and the  $W_o$  value:

mathematical formula (1):  $R_o = R_i * (W_o + Y_{\max}) / Y_{\max} - W_o$ ;

mathematical formula (2):  $G_o = G_i * (W_o + Y_{\max}) / Y_{\max} - W_o$ ; and

mathematical formula (3):  $B_o = B_i * (W_o + Y_{\max}) / Y_{\max} - W_o$ ;

(hereinafter referred to simply as “the mathematical formula (1)”, “the mathematical formula (2)”, and “the mathematical formula (3)”, respectively) to thereby obtain a respective one of the sub-pixel output luminance data  $R_o$ ,  $G_o$  and  $B_o$ .

The decoder 6 then outputs these RGB sub-pixel output luminance data  $R_o$ ,  $G_o$  and  $B_o$  to the source drivers 3 together with  $W_o$ .

The above-described mathematical formula (1) is a formula obtained by modifying mathematical formula (4):  $R_i / Y_{\max} = (R_o + W_o) / (Y_{\max} + W_o)$  (hereinafter referred to simply as, “mathematical formula (4)”).

More specifically, the mathematical formula (4) is a relational expression for the purpose that the ratio between the data values  $R_i$ ,  $G_i$  and  $B_i$  can be made equal to the ratio between the values obtained by adding  $W_o$  to the respective data  $R_o$ ,  $G_o$  and  $B_o$ , when the sub-pixel output luminance data  $R_o$ ,  $G_o$  and  $B_o$  for the RGB sub-pixels are obtained by adding the sub-pixel output luminance data  $W_o$  for the W sub-pixel to the RGB sub-pixel input luminance data  $R_i$ ,  $G_i$ , and  $B_i$ .

Similarly, the mathematical formula (2) is a formula obtained by modifying mathematical formula (5):  $G_i / Y_{\max} = (G_o + W_o) / (Y_{\max} + W_o)$ , and the mathematical formula (3) is a formula obtained by modifying mathematical formula (6):  $B_i / Y_{\max} = (B_o + W_o) / (Y_{\max} + W_o)$ , (hereinafter referred to simply as “mathematical formula (5)”, and “mathematical formula (6)”, respectively).

For the chromaticity of the image which is formed by the liquid crystal panel 1, the following effects can be obtained by driving the source drivers 3 with the RGB sub-pixel output luminance data  $R_o$ ,  $G_o$  and  $B_o$  and the sub-pixel output luminance data  $W_o$  for the W sub-pixels which have been obtained by the above mathematical formulas 1 to 3.

5 For example, when the above function  $W_o = f(Y_{\min})$  is represented by mathematical formula (7):  $W_o = Y_{\min}$  (hereinafter referred to simply as, "mathematical formula (7)"), the minimum value of  $R_i$ ,  $G_i$  and  $B_i$  is selected as the value  $W_o$ . As a result, when at least one of the values  $R_i$ ,  $G_i$  and  $B_i$  is zero,  $W_o = 0$  is established.

10 In this case,  $R_o = R_i$ ,  $G_o = G_i$  and  $B_o = B_i$  are obtained according to the mathematical formulas (1) to (3). Accordingly, the chromaticity does not change in this case.

Moreover, according to the mathematical formulas (1) to (3), the ratio between the data values  $R_i$ ,  $G_i$  and  $B_i$  is equal to the ratio between the values obtained by adding  $W_o$  to the respective data  $R_o$ ,  $G_o$  and  $B_o$ , so that the ratio between the colors does not change, as  
15 a result the chromaticity does not change even in the halftones.

As a specific example, the embodiment (an example of operation) of the decoder 6 will be described for the case of  $R_i=240$ ,  $G_i=160$  and  $B_i=120$  with reference to Fig. 4.

First, the comparator 7 receives  $R_i = 240$ ,  $G_i = 160$ , and  $B_i = 120$  as its input  
20 data from the image data holding section 6 and determines from  $R_i = 240$ ,  $G_i = 160$  and  $B_i = 120$  that the minimum value is 120 and the maximum value is 240, with the result that  $Y_{\min} = 120$ ,  $Y_{\max} = 240$ .

The look-up table 8 determines  $Y_{\min} = 120$ , which is output from the comparator 7, to be  $W_o$  value (here, the case where the value  $W_o = f(Y_{\min})$  is represented  
25 by the mathematical formula (7) is taken as an example).

Finally, the values of  $Y_{\min}=120$  and  $Y_{\max}=240$  and  $W_o=120$  output from the comparator 7 and the look-up table 8, and the values of the RGB sub-pixel input luminance data  $R_i=240$ ,  $G_i=160$ , and  $B_i=120$  are substituted into the mathematical formulas 1 to 3 by the calculating circuits 9 to 11, respectively, whereby the RGBW sub-pixel output  
30 luminance data  $R_o=360$ ,  $G_o=240$  and  $B_o=180$  are obtained (refer to Fig. 4(c)).

As is apparent from this result, according to the calculations by the mathematical formulas 1 to 4,  $R_i:G_i:B_i=240:160:120=6:4:3$  are obtained and  $R_o:G_o:B_o=360:240:180=6:4:3$  are obtained. Thus, it will be understood that the relation of  $R_i:G_i:B_i=R_o:G_o:B_o$  is satisfied.



Since the ratio of RGB of the output luminance data will not differ from the ratio of RGB of the input data even when  $W_o$  is added in order to improve luminance, the chromaticity (color saturation) of the halftones will not be degraded. It is needless to say that the relation represented by the mathematical formulas (4) to (6) is also satisfied even in the case where the digital value of each variable is converted into the dimension of luminance for the reason mentioned above.

More specifically, when the digital value  $R_i$ ,  $G_i$ , and  $B_i$  for the red input sub-pixel, the green input sub-pixel and the blue input sub-pixel obtained from the input image are converted into  $R_I$ ,  $G_I$  and  $B_I$  as the values having the dimension of luminance, and the luminance values for the red output sub-pixel, the green output sub-pixel, the blue output sub-pixel and the luminance-enhancing sub-pixel are represented as  $R_O$ ,  $G_O$ ,  $B_O$  and  $W_O$ , the relation of  $R_I:G_I:B_I=1 (R_O+W_O):(G_O+W_O):(B_O+W_O)$  will be satisfied.

Furthermore, various kinds of modifications can be adopted to the above-described preferred embodiment. Such modifications will now be described.

In the preferred embodiment, although output luminance data for sub-pixel  $W_o$  is defined as the value obtained by the function in which the minimum value  $Y_{min}$  of input data for RGB sub-pixel  $R_i$ ,  $G_i$ , and  $B_i$  is taken as a variable, a value which is obtained by other functions in accordance with the target optical characteristic (luminance) may also be selected as  $W_o$ .

(1) For example, a  $W_o$  value which is obtained by a calculating formula represented by  $W_o=f(Y_{min}, Y_{max})$  as a function which is monotonously increased as each of these two values  $Y_{min}$  and  $Y_{max}$  increases, or as a function which is monotonously increased as the minimum value  $Y_{min}$  increases with the maximum value  $Y_{max}$  being a constant may also be selected as the function, when the maximum value and the minimum value of the input data  $R_i$ ,  $G_i$ , and  $B_i$  for the RGB sub-pixels are  $Y_{max}$  and  $Y_{min}$ , respectively.

(2) When it is desired to emphasize white of maximum luminance, a  $W_o$  value which is obtained by a function such as mathematical formula (8):  $W_o=255*(Y_{min}/255)^2$  may also be selected.

(3) When it is desired to brighten the halftones, a  $W_o$  value which is obtained by a function such as mathematical formula (9):  $W_o=-Y_{min}^3/255^2+Y_{min}^2/255+Y_{min}$  can also be selected.

In the mathematical formulas (8) and (9),  $Y_{min}$  is the minimum value of input luminance data for RGB sub-pixels  $R_i$ ,  $G_i$ , and  $B_i$  as in the preferred embodiment.

However, when a  $W_o$  value is selected, limits should be defined as will be described below, while satisfying the condition that the ratio between the colors is maintained.

When the maximum value and the minimum value of the input data are  $Y_{max}$  and  $Y_{min}$ , and the maximum value and the minimum value of the output luminance data are  $Y_{omax}$  and  $Y_{omin}$ , a formula  $Y_{min}/Y_{max} = (Y_{omin} + W_o)/(Y_{omax} + W_o)$  should be established in order to maintain the ratio between the respective colors, where  $Y_{omax} = Y_{max}$ .

Since the sub-pixel for luminance is added in order to increase luminance, it is desirable that the value of  $W_o$  which is given thereto is as large as possible.

To give a value as large as possible to  $W_o$  means to replace all the white components in the output data with  $W_o$ , with  $Y_{omin} = 0$ , the formula described above can be modified into  $Y_{min}/Y_{max} = W_o/(Y_{max} + W_o)$ .

When solving this formula with respect to  $W_o$ , the following formula can be obtained:  $W_o = Y_{min} * Y_{max} / (Y_{max} - Y_{min})$ .

In this formula, it is understood that  $W_o > Y_{max}$  can be obtained when  $Y_{min}/Y_{max} > 0.5$ . When  $Y_{max}$  is the maximum value which can be taken (for example, 255 gradation level in the case of eight bits),  $W_o$  satisfying  $W_o > Y_{max}$  does not exist.

Therefore,  $W_o = Y_{max}$  is established when  $Y_{min}/Y_{max} > 0.5$ .

In summary, the ratio between the respective colors can be maintained by selecting an optional function so as to satisfy the following relation in order to determine  $W_o$ .

When  $Y_{min}/Y_{max} \leq 0.5$ , a formula  $W_o \leq Y_{min} * Y_{max} / (Y_{max} - Y_{min})$  can be obtained.

When  $Y_{min}/Y_{max} > 0.5$ , a formula  $W_o \leq Y_{max}$  can be obtained.

Although  $W_o$  is represented as a function of  $Y_{min}$  and  $Y_{max}$ , since an area of  $W_o$  becomes narrower as  $Y_{max}$  becomes larger, the range in which an arbitrary  $Y_{max}$  can be applied is as shown by hatching in Fig. 5. That is to say, this hatched area is the range of values of  $W_o$  which can be added for improving luminance while satisfying the condition that the ratio between the respective colors is maintained.

As described above, according to the liquid crystal display device of the invention, the luminance can be improved appropriately without changing the chromaticity of halftones, even when the luminance of the image displayed on the liquid crystal panel is attempted to be enhanced by the white sub-pixels for increasing luminance.

## CLAIMS:

1. A liquid crystal displaying apparatus capable of displaying a color image comprising a liquid crystal panel in which each main pixel unit including a red sub-pixel, a green sub-pixel, a blue sub-pixel and a luminance-enhancing sub-pixel characterized by comprising:  
5 calculation means for calculating digital output values  $R_o$ ,  $G_o$  and  $B_o$  for driving said red sub-pixel, said green sub-pixel and said blue sub-pixel, respectively, from digital input values  $R_i$ ,  $G_i$  and  $B_i$  respectively for said red sub-pixel, said green sub-pixel and said blue sub-pixel and a predetermined digital value  $W$  for driving said luminance-enhancing sub-pixel so that a relationship of  $R_i:G_i:B_i = (R_o+W):(G_o+W):(B_o+W)$  is  
10 satisfied, said values  $R_i$ ,  $G_i$  and  $B_i$  being obtained from an input color image.
2. A liquid crystal displaying apparatus according to claim 1 characterized in that said digital value  $W$  is obtained in accordance with a function represented by a formula  $W = f(Y_{min})$  where  $Y_{min}$  is a minimum value of said digital input values for said red sub-pixel,  
15 said green sub-pixel and said blue sub-pixel.
3. A liquid crystal displaying apparatus according to claim 1 characterized in that said digital value  $W$  is obtained in accordance with a function represented by a formula  $W = f(Y_{max}, Y_{min})$  where  $Y_{max}$  and  $Y_{min}$  are a maximum value and a minimum value,  
20 respectively, of said digital input values for said red sub-pixel, said green sub-pixel and said blue sub-pixel.
4. A liquid crystal displaying apparatus according to claim 3 characterized in that said function represented by said formula  $W = f(Y_{max}, Y_{min})$  is a function which  
25 monotonously increases as a value of said  $Y_{max}$  value or said  $Y_{min}$  value becomes larger.
5. A liquid crystal displaying apparatus according to claim 3 characterized in that said formula of  $W$  is given by a function in which said  $Y_{min}$  is a variable with said  $Y_{max}$

being a constant and in that said function represented by said formula  $W = f(Y_{\max}, Y_{\min})$  is a function which monotonously increases as a value of said  $Y_{\min}$  becomes larger.

6. A liquid crystal displaying apparatus according to any one of claims 1 to 5
- 5 characterized in that said digital input values  $R_i$ ,  $G_i$  and  $B_i$  for said red, green and blue sub-pixels obtained from said input color image are converted respectively into  $R_I$ ,  $G_I$  and  $B_I$  as values having a dimension of luminance, and in that a relationship of  $R_I:G_I:B_I = (R_O+W_O):(G_O+W_O):(B_O+W_O)$  is satisfied when luminance values for said red sub-pixel, said green sub-pixel, said blue sub-pixel and said luminance-enhancing sub-pixel are
- 10 represented by  $R_O$ ,  $G_O$ ,  $B_O$  and  $W_O$ , respectively.

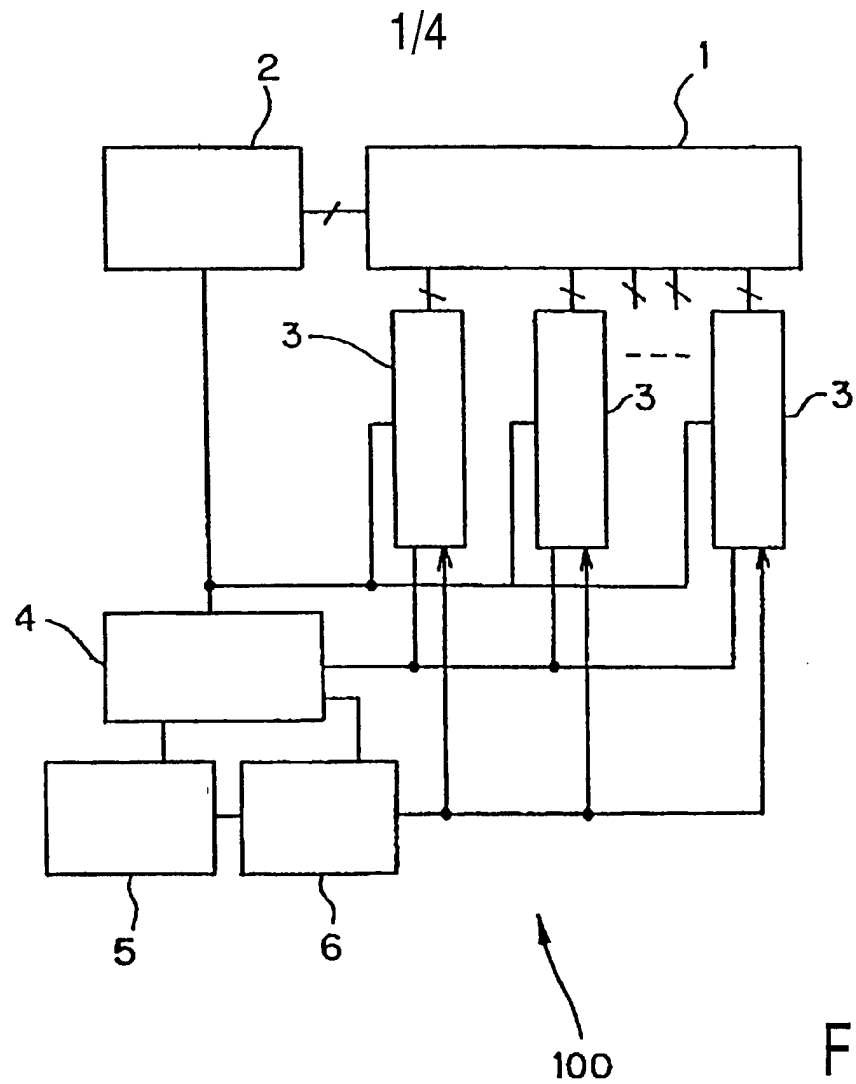


FIG. 1

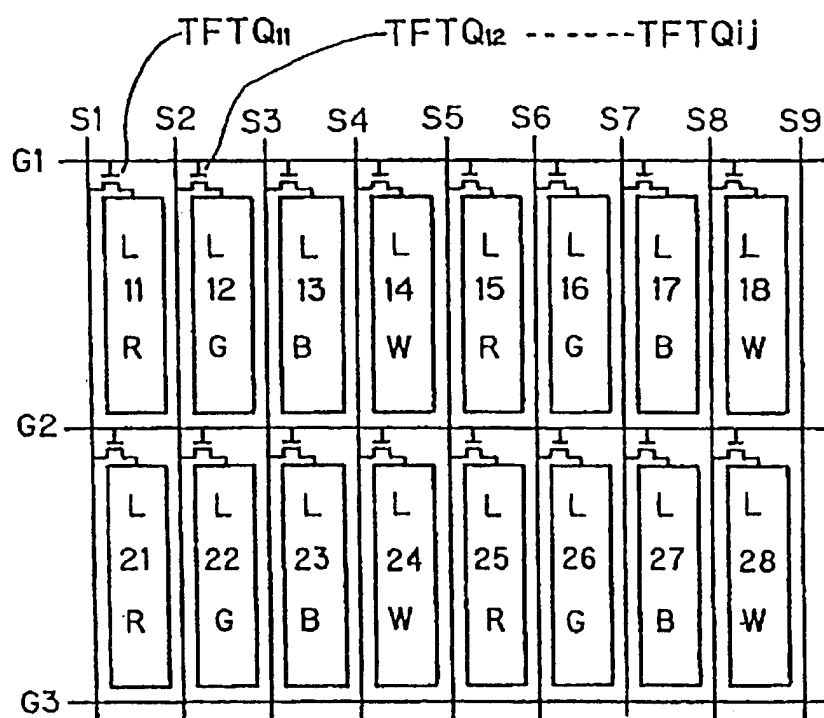


FIG. 2

2/4

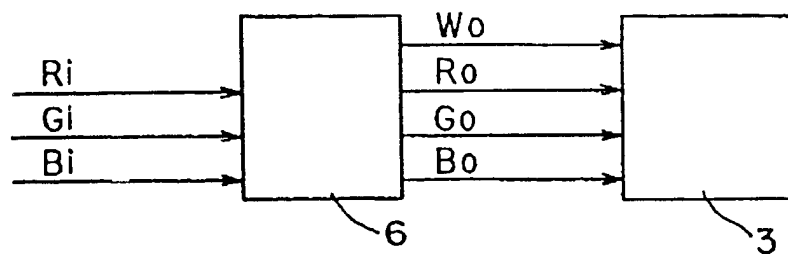


FIG. 3a

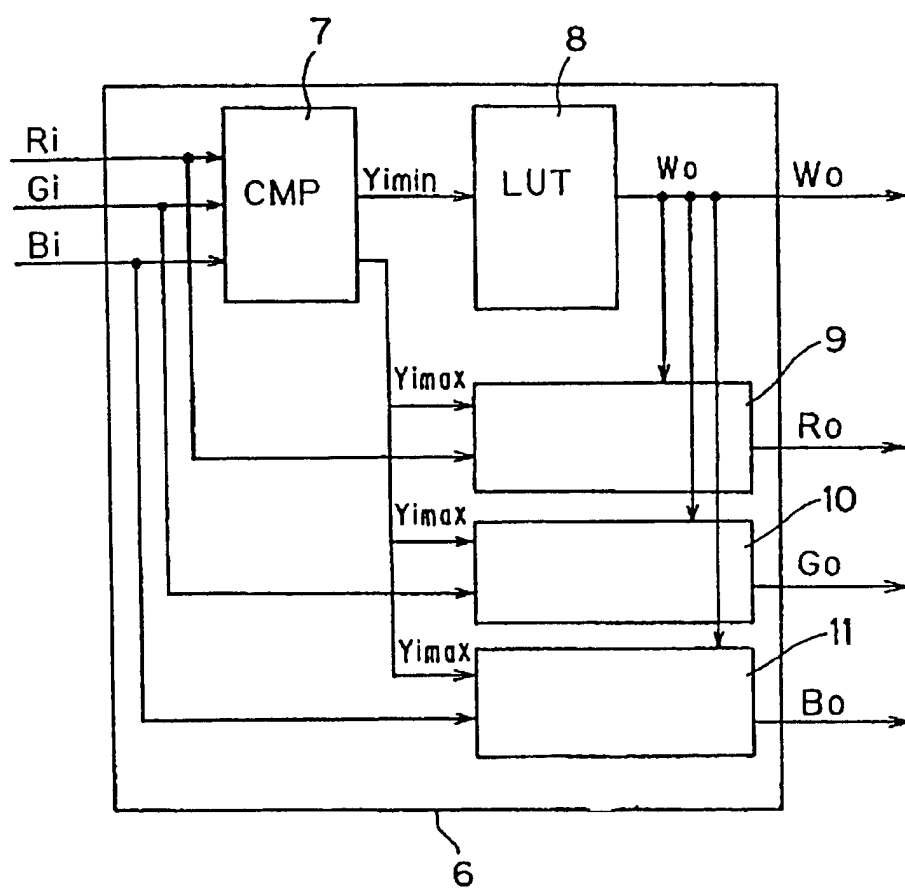


FIG. 3b

3/4

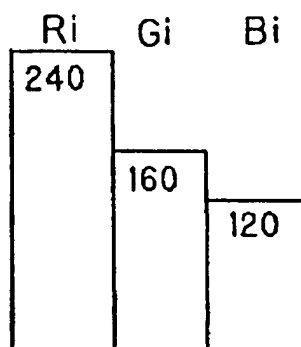


FIG. 4a

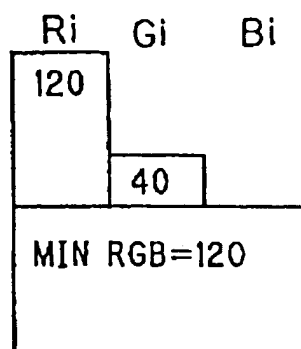


FIG. 4b

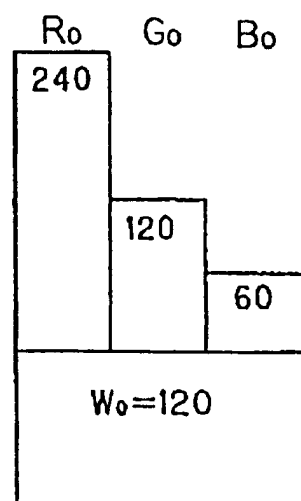


FIG. 4c

4/4

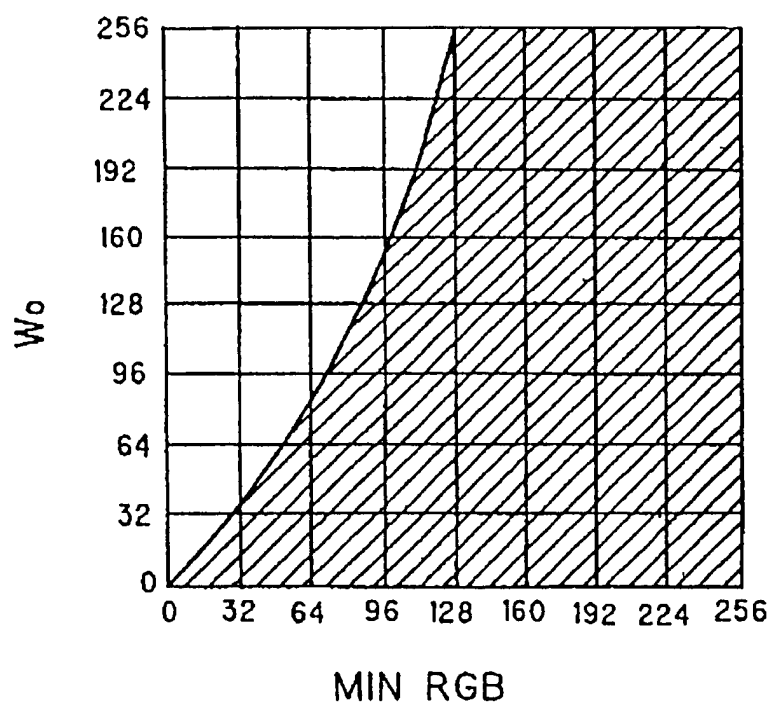


FIG. 5



专利名称(译)	具有改进的亮度控制的液晶显示装置		
公开(公告)号	<a href="#">EP1194917A2</a>	公开(公告)日	2002-04-10
申请号	EP2000985026	申请日	2000-11-10
[标]申请(专利权)人(译)	皇家飞利浦电子股份有限公司		
申请(专利权)人(译)	皇家飞利浦电子N.V.		
当前申请(专利权)人(译)	皇家飞利浦电子N.V.		
[标]发明人	HIRANO SATOSHI YASUI MASARU KAMIYA TAKEO		
发明人	HIRANO, SATOSHI YASUI, MASARU KAMIYA, TAKEO		
IPC分类号	G02F1/133 G09G3/20 G09G3/36 H04N5/66 H04N9/30 G09G3/00		
CPC分类号	G09G3/2003 G09G3/2074 G09G3/3607 G09G5/02 G09G5/06 G09G2300/0426 G09G2300/0452 G09G2340/06		
代理机构(译)	RAAP, 雅迪尔ADRIAAN		
优先权	1999321901 1999-11-12 JP		
其他公开文献	EP1194917B1		
外部链接	<a href="#">Espacenet</a>		

#### 摘要(译)

在RGBW型液晶显示装置中，通过添加W子像素来提高亮度，同时显示图像而半色调的色度没有任何变化。通过将用于驱动W子像素的预定数字值添加到分别对应于所获取图像的像素的每个RGB数字值来获得红色，绿色和蓝色的数字校正。对数字校正进行转换计算，使得红色，绿色和蓝色的这些数字校正的比率等于对应于所述获取图像的像素的红色，绿色和蓝色数字值的比率。RGBW子像素由转换后的值和用于驱动W子像素的预定数字值驱动，从而显示图像。