

(19)



(11)

EP 2 043 082 A1

(12)

EUROPEAN PATENT APPLICATION
published in accordance with Art. 153(4) EPC

(43) Date of publication:

01.04.2009 Bulletin 2009/14

(51) Int Cl.:

G09G 3/36 (2006.01)

G02F 1/133 (2006.01)

G09G 3/20 (2006.01)

(21) Application number: **07739301.5**

(86) International application number:

PCT/JP2007/055858

(22) Date of filing: **22.03.2007**

(87) International publication number:

WO 2008/007480 (17.01.2008 Gazette 2008/03)

(84) Designated Contracting States:

AT BE BG CH CY CZ DE DK EE ES FI FR GB GR HU IE IS IT LI LT LU LV MC MT NL PL PT RO SE SI SK TR

Designated Extension States:

AL BA HR MK RS

(71) Applicant: **Sharp Kabushiki Kaisha**

Osaka-shi, Osaka 545-8522 (JP)

(72) Inventor: **TSUBATA, Toshihide**

Mie 514-0003 (JP)

(30) Priority: **14.07.2006 JP 2006193858**

28.12.2006 JP 2006356447

(74) Representative: **Zinke, Thomas**

Müller Hoffmann & Partner

Patentanwälte

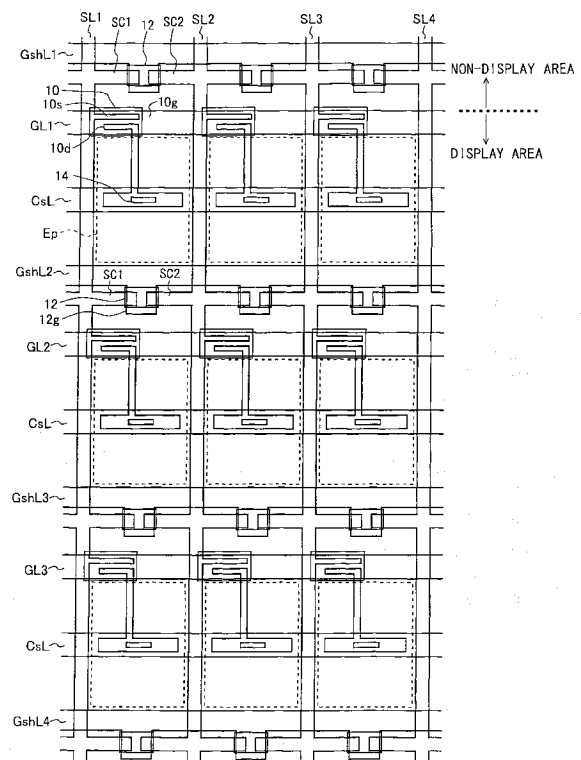
Innere Wiener Straße 17

D-81667 München (DE)

(54) **ACTIVE MATRIX SUBSTRATE AND DISPLAY DEVICE WITH THE SAME**

(57) An object of the present invention is to prevent deterioration of display quality from occurring in a display device provided with an active matrix substrate even when a larger size or a higher resolution is employed and a drive frequency is increased. In an active matrix substrate of a liquid crystal display device, a charge sharing control signal line (GshLj) is disposed so as to be arranged along each gate line (GLj) and charge sharing TFTs (12) are provided for each source line (SLi) in numbers equal to the number of the gate lines. The gate terminal of the charge sharing TFT (12) is connected to the charge sharing control signal line (GshLj) and the source and drain terminals are connected with neighboring source lines (SLi and SLi + 1) via connection electrode portions (SCi and SCi + 1), respectively. Each of the charge sharing control signal lines (GshLj) is provided with a signal Gsh which turns on the charge sharing TFT (12) for a predetermined period Tsh of every one horizontal period.

Fig. 1



EP 2 043 082 A1

Description

Technical Field

5 **[0001]** The present invention relates to an active matrix substrate using switching elements such as thin film transistors and an active matrix type display device such as a liquid crystal display device having the same.

Background Art

10 **[0002]** An active matrix substrate is widely used in an active matrix type display device such as a liquid crystal display device and an EL (Electroluminescence) display device. For example, the main part of the active matrix type liquid crystal display device is composed of a liquid crystal panel and drive circuits thereof, and the liquid crystal panel typically includes: the active matrix substrate having pixel circuits disposed in a matrix, each of which contains a thin film transistors (hereinafter, simply abbreviated as "TFT") as a switching element and a pixel electrode and the like; an opposite substrate of a transparent insulating substrate such as a glass plate having an opposite electrode and an alignment film sequentially deposited over the entire surface thereof; a liquid crystal layer held between the both substrates; and polarizers attached to the respective outside surfaces of the both substrates.

15 **[0003]** Fig. 29 is a plan view showing a structure of a conventional active matrix substrate 700 used for the liquid crystal display device as described above, and illustrates a pattern configuration in a part corresponding to one pixel. The active matrix substrate 700 includes a plurality of data signal lines 715, a plurality of scanning signal lines 716 intersecting the plurality of data signal lines 715, TFTs 712 formed as the switching elements in the neighborhood of the intersections of the plurality of data signal lines 715 and the plurality of scanning signal lines 716, respectively, and a pixel electrode 717. The scanning signal line 716 works also as the gate electrode of the TFT 712, the source electrode 719 of the TFT 712 is connected to the data signal line 715, and the drain electrode 708 is connected to the pixel electrode 717 via a drain extraction electrode 707. A hole is formed in an insulating film disposed between the drain extraction electrode 707 and the pixel electrode 717 and thereby a contact hole 710 is formed connecting the drain extraction electrode 707 and the pixel electrode 717. The pixel electrode 717 is a transparent electrode made of ITO (Indium Tin Oxide) or the like and transmits light from the back of a liquid crystal panel including the active matrix substrate 700 (backlight).

20 **[0004]** In the active matrix substrate 700, the TFT 712 is turned on by a gate-on voltage of a scanning signal applied to the scanning signal line 716 (conductive state between the source electrode 719 and the drain electrode 708), a data signal applied to the data signal line 715 in this state is written into a pixel capacitance (capacitance formed by the pixel electrode 717 and the opposite electrode) via the source electrode 719, the drain electrode 708, and the drain extraction electrode 707. Note that, in the active matrix substrate 700, a storage capacitance line 718 is formed along the scanning signal line 716 and the storage capacitance line 718 has a function of avoiding self discharge of the liquid crystal layer during an OFF period in the TFT 712, or the like.

25 **[0005]** The liquid crystal display device using such an active matrix substrate 700 is typically driven by an alternating voltage for preventing the deterioration of display quality, and a technique is proposed (e.g., Japanese Patent Application Laid-Open Publication No. 8-43795 (Patent document 2)), in which a positive polarity voltage and a negative polarity voltage are applied to the pixel electrode alternately at a fixed time interval with an opposite voltage as a reference potential, the opposite voltage being applied on the opposite electrode (also called "common electrode") provided on the opposite substrate opposite to the active matrix substrate 700 sandwiching the liquid crystal layer, and the polarity inverts every two horizontal periods, for example (hereinafter, called "2H inversion drive").

30 **[0006]** However, while in the drive of the first line of the two lines which are a unit for the polarity inversion in this 2H inversion drive, the polarity of the applied voltage to the data signal line is inverted immediately before the drive of the first line is started, the polarity of the applied voltage to the data signal line is not inverted when the drive is shifted from the first line to the second line in the two lines. Therefore, the drive of the first line requires a longer time for charging the data signal line compared to the drive of the second line, and resultantly a difference of charged amount in the pixel capacitance is caused between the first line and the second line. This difference of the charged amount appears as a luminance difference between a pixel in the Nth line corresponding to the first line of the polarity inversion unit and a pixel in the (N + 1)_th line corresponding to the second line of the polarity inversion unit in one frame and causes horizontal line irregularity to be viewed.

35 **[0007]** Accordingly, there is proposed a method to make uniform the charging characteristic by applying the data signal exhibiting a certain intermediate potential between the positive polarity and negative polarity potentials during a blanking period for every horizontal period (Japanese Patent Application Laid-Open Publication No. 2004-61590 (Patent document 3))

Patent document 2: Japanese Patent Application Laid-Open Publication No. 8-43795
Patent document 3: Japanese Patent Application Laid-Open Publication No. 2004-61590
Patent document 4: Japanese Patent Application Laid-Open Publication No. 9-243998
Patent document 5: Japanese Patent Application Laid-Open Publication No. 2002-268613

5

Disclosure of the Invention

Problems to be Solved by the Invention

10 **[0008]** Meanwhile, in an active matrix type liquid crystal display device employing a dot inversion drive method in which the polarity of the data signal applied to the data signal line of the liquid crystal panel is inverted for every one or two horizontal periods and also for every data signal line, there is a case to employ a method to cause a short-circuit between the neighboring data signal lines when the polarities of the data signals S(1) to S(N) are inverted (hereinafter, called "charge sharing method") for reducing power consumption. When the charge sharing method is employed in the
15 liquid crystal display device using the dot inversion drive method which inverts the polarity of the data signal every two horizontal periods (hereinafter, called "2H dot inversion drive method"), the neighboring data signal lines are short-circuited every two horizontal periods. Therefore, also in this case, the difference of the charged amount occurs between the two lines of the polarity inversion unit and sometimes causes the horizontal line irregularity to be viewed.

[0009] In the liquid crystal display device using such a 2H dot inversion drive method, it is possible to make uniform the charging characteristic (elimination of the charged amount difference in the pixel capacitance) in the two lines of the polarity inversion unit by causing a short-circuit between the neighboring data signal lines not every two horizontal periods but every one horizontal period as same as in the technique disclosed by Patent document 3 described above (Japanese Patent Application Laid Open Publication No. 2004-61590). However, between the first line and the second line in the
20 two lines of the polarity inversion unit there is a difference in the time elapsed before the charge is re-distributed and the potential of each data signal line settles to a certain value by the short-circuit. Accordingly, in the period when the neighboring data signal lines are short-circuited for the charge re-distribution (hereinafter, called "charge sharing period"), the voltage V_s of the data signal line does not reach the above certain value, that is, a middle value of the data signal line potential (hereinafter, called "source center potential"), and there is a difference between the potential of the first line immediately after the charge sharing period before the drive starts and the potential of the second line immediately
25 after the charge sharing period before the drive starts. In this case, the difference in the charged amount of the pixel capacitance between the first line and the second line is not eliminated sufficiently, and the horizontal line irregularity is viewed sometimes.

[0010] Recently, a resolution has been improved in the active matrix type display device such as the liquid crystal display device and there is a case of employing a method to increase a drive frequency for improving a moving picture performance or the like. Accordingly, the charging time, which can be secured for writing pixel data into the pixel capacity, tends to become shorter. When the charging time becomes shorter, there is a concern that right pixel data is not written into the pixel capacitance because of shortage of the charging and also it becomes difficult to secure a sufficient charge sharing period. Thus, there arises evidently the above described problem in the liquid crystal display device using the
35 2H dot inversion drive method. Further, when the potential of each of the data signal lines does not reach the source center potential because the sufficient charge sharing time can not be secured, the phenomena thereof also causes worsening the shortage of the charging. Such a problem of the shortage in charging resulting from the resolution improvement or the drive frequency increase occurs similarly as in the liquid crystal display device using the 1H dot inversion drive method.

[0011] For this problem, Japanese Patent Application Laid-Open Publication No. 2002-268613 (Patent document 5) discloses a liquid crystal display device in which a switching element causing a short-circuit between neighboring data lines is formed in the neighborhood of an edge part of a liquid crystal panel on the farther side from a data driver (data signal line drive circuit). With such a configuration, it is possible to improve distortion of a data line voltage which increases as the distance between the data line and the data driver increases, and thereby it is possible to alleviate or eliminate the problem that parasitic capacitance increases and the data voltage is not sufficiently charged to the data line as the
40 size of the liquid crystal display device increases. Further, it is possible to charge the data voltage sufficiently to the data line compared to the conventional liquid crystal display device which does not employ the charge sharing method. However, this configuration can not solve the above described problem of the shortage in charging caused by the improvement of the resolution or the increase of the drive frequency.

[0012] As described above, in the conventional liquid crystal display device using the active matrix substrate, it becomes difficult to display a good image because of the difference in the charged amount or the shortage of charging in the pixel capacitance, when a larger size or a higher resolution is employed and the drive frequency thereof is increased.

[0013] Accordingly, an object of the present invention is to provide an active matrix substrate without the deterioration of display quality even when a larger size or a higher resolution is employed and the drive frequency is increased. Further,

another object of the present invention is to provide an active matrix type display device without the deterioration of display quality even when a larger size or a higher resolution is employed in the display device and the drive frequency thereof is increased.

5 Means for Solving the Problems

[0014] A first aspect of the present invention provides an active matrix substrate including:

10 a plurality of data signal lines;
 a plurality of scanning signal lines intersecting the plurality of data signal lines;
 a pixel switching element provided corresponding to each of intersections of the plurality of data signal lines and the plurality of scanning signal lines, the pixel switching element being turned on and off by the scanning signal line passing through the corresponding intersection;
 15 a pixel electrode connected to the data signal line passing through the intersection corresponding to the pixel switching element via the pixel switching element;
 charge sharing switching elements connected to the plurality of data signal lines so as to cause a short-circuit in its on-state between each of the plurality of data signal lines and another data signal line neighboring thereto, predetermined number of two or more of the charge sharing switching elements being provided for each of the plurality of data signal lines in a direction in which the data signal line extends; and
 20 charge sharing control signal lines for turning on and off the charge sharing switching elements.

[0015] A second aspect of the present invention provides the active matrix substrate according to the first aspect of the present invention, wherein
 25 each of the plurality of data signal lines includes first and second signal lines electrically separated from each other, and predetermined number of two or more of the charge sharing switching elements are provided for each of the first and second signal lines in the direction in which the data signal line extends.

[0016] A third aspect of the present invention provides the active matrix substrate according to the first aspect of the present invention, wherein
 30 the charge sharing switching elements are disposed at a substantially equal interval in the direction in which the data signal line extends.

[0017] A fourth aspect of the present invention provides the active matrix substrate according to the first aspect of the present invention, wherein
 the charge sharing control signal lines include a plurality of control signal lines disposed along the plurality of scanning signal lines, respectively,
 35 the charge sharing switching elements include a plurality of switching elements provided corresponding to the plurality of control signal lines for each of the plurality of data signal lines, and each of the plurality of switching elements is turned on and off by the corresponding control signal line.

[0018] A fifth aspect of the present invention provides the active matrix substrate according to the first aspect of the present invention, wherein
 40 the charge sharing switching elements include a group of switching elements disposed in a neighborhood of one end of the plurality of data signal lines and a group of switching elements disposed in a neighborhood of the other end of the plurality of data signal lines.

[0019] A sixth aspect of the present invention provides the active matrix substrate according to the first aspect of the present invention, wherein
 45 the charge sharing control signal lines include a non-display-area control signal line disposed so as to intersect the plurality of data signal lines in a non-display area, and the charge sharing switching elements include a group of switching elements disposed in the non-display area and turned on and off by the non-display-area control signal line disposed in the non-display area.

[0020] A seventh aspect of the present invention provides the active matrix substrate according to the first aspect of the present invention, wherein
 50 the pixel electrode is disposed so as to overlap with the charge sharing control signal line.

[0021] An eighth aspect of the present invention provides the active matrix substrate according to the first aspect of the present invention, wherein
 an electrode portion connecting the charge sharing switching element to the data signal line is disposed so as not to
 55 overlap with the charge sharing control signal line.

[0022] A ninth aspect of the present invention provides the active matrix substrate according to the first aspect of the present invention, wherein
 lengths of interconnections for connecting the charge sharing switching element and the two neighboring data signal

lines short-circuited by the charge sharing switching element in the on-state are the same with each other.

[0023] A tenth aspect of the present invention provides a display device including:

an active matrix substrate according to any of the first to ninth aspects of the present invention;
 a scanning signal line drive circuit for generating a plurality of scanning signals for selectively driving the plurality of scanning signal lines and for applying the plurality of scanning signals to the plurality of scanning signal lines, respectively;
 a data signal line drive circuit for generating a plurality of data signals, which represent an image to be displayed, as voltage signals which invert polarities every predetermined number of the data signal lines and also invert the polarities every predetermined number of horizontal periods and for applying the plurality of data signals to the plurality of data signal lines, respectively; and
 a charge sharing control signal generation circuit for generating a charge sharing control signal to be applied to the charge sharing control signal line so as to cause a short-circuit between each of the plurality of data signal lines and another data signal line neighboring thereto for a predetermined charge sharing period of every one horizontal period.

[0024] An eleventh aspect of the present invention provides the display device according to the tenth aspect of the present invention, wherein

the data signal line drive circuit generates the plurality of data signals so as to invert the voltage polarities every predetermined number of two or more of horizontal periods.

[0025] A twelfth aspect of the present invention provides the display device according to the tenth aspect of the present invention, wherein

the data signal line drive circuit includes a switch circuit for cutting off the application of the plurality of data signals to the plurality of data signal lines and also short-circuiting the plurality of data signal lines with each other, for the charge sharing period of every one horizontal period.

[0026] A thirteenth aspect of the present invention provides the display device according to the tenth aspect of the present invention, wherein

the data signal line drive circuit applies a fixed voltage to the plurality of data signal lines when the plurality of data signal lines are short-circuited with each other by the switch circuit.

[0027] A fourteenth aspect of the present invention provides the display device according to the thirteenth aspect of the present invention, wherein

a value of the fixed voltage is a middle value between a maximum value and a minimum value of the data signal.

[0028] A fifteenth aspect of the present invention provides the display device according to the tenth aspect of the present invention, wherein

DC levels of the plurality of data signals correspond to a black display, and
 the scanning signal line drive circuit selectively drives the plurality of scanning signal lines such that each of the plurality of scanning signal lines is in a selected state for an effective scanning period other than the charge sharing period at least once in each frame period and the scanning signal line, which was in the selected state for the effective scanning period, is in the selected state for the charge sharing period, at least once after a predetermined pixel value holding time has elapsed from a time when the selected state changed to an unselected state and before the scanning signal line goes to the selected state during the effective scanning period in the next frame period.

[0029] A sixteenth aspect of the present invention provides the display device according to the fifteenth aspect of the present invention, wherein

the scanning signal line drive circuit causes the scanning signal line, which was in the selected state for the effective scanning period, to be in the selected state for the charge sharing period a plurality of times after the pixel value holding time has elapsed from the time when the selected state changed to the unselected state and before the scanning signal line goes to the selected state during the effective scanning period in the next frame period.

[0030] A seventeenth aspect of the present invention provides the display device according to the sixteenth aspect of the present invention, wherein

a period during which each of the plurality of scanning signal lines is in the selected state for the effective scanning period does not overlap with a period during which any of the plurality of scanning signal lines is in the selected state for the charge sharing period.

[0031] An eighteenth aspect of the present invention provides the display device according to the tenth aspect of the present invention, wherein

the data signal line drive circuit includes

a plurality of buffers for outputting the plurality of data signals to be applied to the plurality of data signal lines, respectively, and

a halt control part for halting the plurality of buffers for the charge sharing period.

[0032] A nineteenth aspect of the present invention provides a television receiver, including a display device according to the tenth aspect of the present invention.

[0033] A twentieth aspect of the present invention provides a drive method of an active matrix substrate including a plurality of data signal lines, a plurality of scanning signal lines intersecting the plurality of data signal lines, a pixel switching element provided corresponding to each of intersections of the plurality of data signal lines and the plurality of scanning signal lines, the pixel switching element being switched on and off by the scanning signal line passing through the corresponding intersection, and a pixel electrode connected to the data signal line passing through the intersection corresponding to the pixel switching element via the pixel switching element, the drive method comprising:

a scanning signal line drive step of generating a plurality of scanning signals for selectively driving the plurality of scanning signal lines and applying the plurality of scanning signals to the plurality of scanning signal lines, respectively;

a data signal line drive step of generating a plurality of data signals, which represent an image to be displayed, as voltage signals which invert polarities every predetermined number of data signal lines and also invert the polarities every predetermined number of horizontal periods and applying the plurality of data signals to the plurality of data signal lines, respectively; and

a charge sharing step of short-circuiting each of the plurality of data signal lines with another data signal line neighboring thereto every one horizontal period, wherein:

the active matrix substrate further includes:

charge sharing switching elements connected to the plurality of data signal lines so as to cause a short-circuit in its on-state between each of the plurality of data signal lines and another data signal line neighboring thereto, predetermined number of two or more of the charge sharing switching elements being provided for each of the plurality of data signal lines in a direction in which the data signal line extends; and

charge sharing control signal lines for turning on and off the charge sharing switching elements, and wherein in the charge sharing step, each of the plurality of data signal lines is short-circuited with another data signal line neighboring thereto by a signal provided to the charge sharing control signal lines for turning on the charge sharing switching elements for a predetermined period of every one horizontal period.

Advantages of the Invention

[0034] According to the first aspect of the present invention, each of the data signal lines is connected to another data signal line neighboring thereto via the plurality of charge sharing switching elements, and thereby charge transfer is accelerated between the data signal lines during the charge sharing period. Here, providing the plurality of charge sharing switching elements for the one data signal line corresponds to breaking up the charge charged in the one data signal line and transferring the broken one by each of the charge sharing switching elements. Thereby, the potential of each of the data signal lines is made to reach the intermediate potential (source center potential) in a short time. Resultantly, it is possible to suppress the deterioration of display quality caused by the difference in the charged amount or shortage of charging in the pixel capacitance, even when a larger size or a higher resolution is employed in the display device and the drive frequency thereof is increased.

[0035] In the second aspect of the present invention, each of the data signal lines is composed of the first and the second signal lines electrically separated from each other and configured to accommodate an upper-and-lower division drive method, and thereby the active matrix substrate according to the aspect of the present invention is favorable for the display device to aim for improvement in the moving image display performance by increasing the drive frequency. In such an active matrix substrate, since each of the data signal lines is connected to another data signal line neighboring thereto via the plurality of charge sharing switching elements, the charge transfer is accelerated between the data signal lines during the charge sharing period. Thereby, it is possible to suppress the deterioration of display quality caused by the difference in the charged amount or the shortage of charging in the pixel capacitance.

[0036] According to the third aspect of the present invention, the charge sharing switching elements are disposed in the direction in which the data signal line extends at the substantially equal interval, and thereby it is possible to cause the potential in the data signal line to reach the intermediate potential in the charge sharing period uniformly in the entire active matrix substrate even when a larger size or a higher resolution is employed in the display device.

[0037] According to the fourth aspect of the present invention, since the control signal line for the charge sharing is disposed along each of the scanning signal lines and the switching element for the charge sharing is provided corresponding to each of the control signal lines for each of the data signal lines, there exist the switching elements for each of the data signal lines in numbers equal to the number of the scanning signal lines and the charge transfer is performed by these switching elements between the data signal lines for the charge sharing period. Thereby, it is possible to cause

the potential in the data signal line to reach the intermediate potential uniformly in the entire active matrix substrate, even when the charge sharing period is shorter or a larger active matrix substrate is employed. Further, since there exist the switching element for the charge sharing at each pixel and the control signal line for turning on and off the switching element in each pixel line, the arrangement of the switching elements and the control signal lines for the charge sharing matches the pixel arrangement of image to be formed on the active matrix substrate and the regularity of the pixel arrangement is not disturbed by the addition of the switching elements and the control signal lines for the charge sharing.

5 [0038] According to the fifth aspect of the present invention, the charge transfer is performed between the data signal lines for the charge sharing period by the switching element group disposed in the neighborhood of one end of the data signal lines and the switching element group disposed in the neighborhood of the other end of the data signal lines. Accordingly, the potential in the data signal line can be made uniform immediately after the charge sharing period within the active matrix substrate, compared to a conventional charge sharing method in which the charge transfer between the data signal lines is performed by a switching circuit in the data signal line drive circuit.

10 [0039] According to the sixth aspect of the present invention, the charge transfer is performed for the charge sharing period between the data signal lines via the switching element which is turned on and off by the non-display area control signal line in the non-display area. Thereby, it is possible to accelerate the charge transfer between the data signal lines in the charge sharing period while suppressing the deterioration of an aperture ratio.

15 [0040] According to the seventh aspect of the present invention, since the pixel electrode is disposed so as to overlap with the charge sharing control signal line, it is possible to secure a larger area for the pixel portion and thereby to increase the aperture ratio.

20 [0041] According to the eighth aspect of the present invention, since the electrode portion (connection electrode portion) connecting the charge sharing switching element to the data signal line is disposed so as not to overlap with the charge sharing control signal line, it is possible to repair a short-circuit fault by cutting the connection electrode portion with laser irradiation or the like, when a transistor serving as the switching element for the charge sharing is short-circuited and always in a conduction state caused by a defect such as a film residual in a channel portion of the transistor (case of a transistor short-circuit fault). Further, such a disposition configuration is effective to reduce a probability of causing a short-circuit between the charge sharing control signal line and the data signal line.

25 [0042] According to the ninth aspect of the present invention, the lengths of the interconnections for connecting the charge sharing switching element and the two neighboring data signal lines to be short-circuited, when the charge sharing switching element is turned on, are the same as each other, and thereby it is possible to transfer the charge in the charge sharing period symmetrically between the neighboring data signal lines.

30 [0043] According to the tenth aspect of the present invention, in the active matrix type display device employing the charge sharing method, each of the data signal lines is short-circuited with another data signal line neighboring thereto for the charge sharing period when the polarity of the data signal is inverted, and thereby the charge is transferred between the neighboring data signal lines to reduce power consumption. Further, the difference occurs in the charged amount of the pixel capacitance between the two lines of the polarity inversion unit and the horizontal line irregularity is viewed sometimes in the liquid crystal display device using the conventional 2H dot inversion drive method, for example. However, in this display device, the charge sharing period, when each of the data signal lines is short-circuited with another data signal line neighboring thereto, is provided for each horizontal period and such charged amount difference or horizontal line irregularity are suppressed. Further, since each of the data signal lines is connected with another data signal line neighboring thereto via the plurality of charge sharing switching elements, the charge transfer is performed in a short time between the data signal lines in the charge sharing period. As a result, it is possible to suppress the deterioration of display quality caused by the difference in the charged amount or the shortage of charging in the pixel capacitance, even when a larger size or a higher resolution is employed in the display device and the drive frequency thereof is increased.

35 [0044] According to the eleventh aspect of the present invention, the period of the polarity inversion in the data signal corresponds to two or more horizontal periods and it is possible to reduce a heat value and power consumption in the data signal line drive circuit. Generally, as the polarity inversion period becomes longer, that is, "n" becomes larger in the "nH" dot inversion drive method to be employed, the heat value and the power consumption are reduced more in the data signal line drive circuit. Further, for the same reason as in the tenth aspect of the present invention, it is possible to suppress the deterioration of display quality caused by the difference in the charged amount or the shortage of charging in the pixel capacitance, even when a larger size or a higher resolution is employed in the display device and the drive frequency thereof is increased.

40 [0045] According to the twelfth aspect of the present invention, the data signal lines on the active matrix substrate are short-circuited with each other for the charge sharing period (a predetermined period for every one horizontal period) also by the switch circuit within the data signal line drive circuit, and thereby the charge transfer is further accelerated between the data signal lines.

45 [0046] According to the thirteenth aspect of the present invention, since a fixed voltage is applied to the data signal lines when the data signal lines on the active matrix substrate are short-circuited with each other by the switch circuit

within the data signal line drive circuit (charge sharing period), the voltage of each of the data signal lines immediately after the charge sharing period always becomes the same voltage, even when a correction amount of the data signal for compensating gradation dependence of a pull-in voltage due to a parasitic capacitance of each pixel formation portion is different depending on gradation to be displayed. Thereby, it is possible to suppress the horizontal line irregularity to occur, even when the data signal is corrected according to the gradation to be displayed.

[0047] According to the fourteenth aspect of the present invention, the potential of each of the data signal lines becomes to have the middle value between the minimum value and the maximum value of the data signal immediately after the charge sharing period, and thereby it is possible to make uniform the charged amount of the pixel capacitance without depending on the polarity of the data signal to be applied to the pixel electrode.

[0048] According to the fifteenth aspect of the present invention, since the plurality of data signals applied to the plurality of data signal lines, respectively, on the active matrix substrate are voltage signals which invert the polarities every predetermined number of data signal lines, the voltage of each of the data signal lines becomes approximately the same as a DC level of the data signal in the charge sharing period when each of the plurality of data signal lines is short-circuited with another data signal line neighboring thereto. This means that the voltage of each of the data signal lines becomes to have a value corresponding to a black display (black voltage). Meanwhile, each of the scanning signal lines is in the selected state for the charge sharing period at least once after the predetermined pixel value holding period has elapsed from the time the scanning signal line was selected in the effective scanning period for writing a pixel value. Thereby, since a period until the scanning signal line goes into the selected state next in the effective scanning period for writing the pixel value becomes available for a period of the black display, it is possible to insert a black with the same length into all the display lines and to improve the display performance for a moving image by realizing an impulse type drive securing a sufficient black insertion period without shortening the charging time of the pixel capacitance for writing the pixel value. Further, it is not necessary to increase an operation speed of the data signal line drive circuit or the like for inserting the black.

[0049] According to the sixteenth aspect of the present invention, the scanning signal line which was in the selected state for the effective scanning period is in the selected state for the charge sharing period the plurality of times after the pixel value holding period has elapsed from the time when the selected state changed to the unselected state and before the scanning signal line goes to the selected state during the effective scanning period in the next frame period. Thereby, it is possible to cause display luminance to be at a sufficient black level in the black display period for the impulse type drive.

[0050] According to the seventeenth aspect of the present invention, since the period during which each of the scanning signal lines is in the selected state for the effective scanning period does not overlap with the period during which any of the scanning signal lines is in the selected state for the charge sharing period, the load of a power supply does not become too heavy for causing the scanning signal line to be in the selected state and waveform deterioration is reduced for pulses included in each of the scanning signals as a pulse for writing the pixel value in the effective scanning period and a pulse for writing the black voltage in the charge sharing period. Thereby, it is possible to suppress the shortage of charging in the pixel capacitance caused by the waveform deterioration of the pixel value write pulse, while keeping the pixel luminance in a sufficient black level in the black display period.

[0051] According to the eighteenth aspect of the present invention, the buffers within the data signal line drive circuit are halted for the charge sharing period when each of the data signal lines is short-circuited with another data signal line neighboring thereto, and thereby it is possible to reduce power consumption of the data signal line drive circuit.

Brief Description of the Drawings

[0052] Fig. 1 is a plan view showing a first example of a pattern configuration for an active matrix substrate in a first embodiment of the present invention.

Fig. 2 is a plan view showing a second example of the pattern configuration for the active matrix substrate in the first embodiment.

Fig. 3 is a plan view showing a third example of the pattern configuration for the active matrix substrate in the first embodiment.

Fig. 4 is a block diagram showing a configuration of a liquid crystal display device according to the first embodiment.

Fig. 5 is an equivalent circuit diagram showing a configuration of a part (part corresponding to four pixels) of the active matrix substrate in the first embodiment.

Fig. 6 is a block diagram showing a configuration of a source driver in the liquid crystal display device according to the first embodiment.

Fig. 7 is a circuit diagram showing a configuration example of an output part of the above source driver.

Fig. 8 consists of signal waveform charts (A) to (F) for explaining the operation of the liquid crystal display device according to the first embodiment.

Fig. 9 is a detailed signal waveform chart for explaining the operation of an active matrix substrate in a conventional liquid crystal display device with a 2H dot inversion drive employing a charge sharing method.

Fig. 10 is a detailed signal waveform chart for explaining the operation of the active matrix substrate in the first embodiment.

5 Fig. 11 consists of voltage waveform charts (A) and (B) for explaining a pull-in voltage caused by a parasitic capacitance between the gate and drain of a TFT in a pixel circuit (pixel formation portion) of an active matrix substrate. Fig. 12 consists of voltage waveform charts (A) and (B) illustrating a pixel voltage and a source voltage respectively, when the source voltage is corrected for compensating a gradation dependence of the pull-in voltage in a charge sharing type liquid crystal display device.

10 Fig. 13 is a circuit diagram showing a first configuration example for an output part of a source driver in a liquid crystal display device according to a second embodiment of the present invention.

Fig. 14 is a circuit diagram showing a second configuration example for the output part of the source driver in the liquid crystal display device according to the second embodiment.

15 Fig. 15 is a block diagram showing a configuration of a liquid crystal display device according to a third embodiment of the present invention.

Fig. 16 consists of block diagrams (A) and (B) illustrating a configuration example for a gate driver in a fourth embodiment of the present invention.

Fig. 17 consists of signal waveform charts (A) to (F) for explaining the operation of the gate driver in the fourth embodiment.

20 Fig. 18 consists of signal waveform charts (A) to (H) for explaining a drive method of a liquid crystal display device according to the fourth embodiment.

Fig. 19 consists of signal waveform charts (A) to (G) for explaining a scanning signal of a liquid crystal display device according to a variation of the fourth embodiment.

25 Fig. 20 is a block diagram showing a configuration of a liquid crystal display device according to a first variation of the first embodiment.

Fig. 21 is an equivalent circuit diagram showing a configuration of a part (part corresponding to four pixels) of an active matrix substrate in the first variation.

Fig. 22 is a block diagram showing a configuration of a liquid crystal display device according to a second variation of the first embodiment.

30 Fig. 23 is an equivalent circuit diagram showing a configuration of a part (part corresponding to two pixel columns) of an active matrix substrate in the second variation.

Fig. 24 is a circuit diagram showing a configuration for an output part of a source driver in a liquid crystal display device according to another variation of the first to fourth embodiments.

35 Fig. 25 is a circuit diagram showing an output buffer configuration of the output part of the source driver shown in Fig. 24.

Fig. 26 is a block diagram showing a configuration example of a display device for a television receiver using the active matrix substrate according to the present invention.

Fig. 27 is a block diagram showing an entire configuration, including a tuning part, of the television receiver using the active matrix substrate according to the present invention.

40 Fig. 28 is a perspective exploded view showing a mechanical configuration of the television receiver.

Fig. 29 is a partial plan view showing a pattern configuration of a conventional active matrix substrate.

Description of the Reference Symbols

45 **[0053]**

10 Pixel TFT (Pixel switching element)

12 Charge sharing TFT (Charge sharing switching element)

100 Display part

50 110, 112, 114, 116 Active matrix substrate

120 Opposite substrate

200 Display control circuit

300 Source driver (Data signal line drive circuit)

302 Data signal generation part

55 304 Output part

400 Gate driver (Scanning signal line drive circuit)

500 Charge sharing control circuit (Charge sharing control signal generation circuit)

SC_i, SC_i + 1 connection electrode portion (i = 1, 2, ..., N - 1)

Cp Pixel capacitance
 Ec Common electrode
 SWa First MOS transistor
 SWb Second MOS transistor
 5 SWb2 Third MOS transistor
 SWc Second MOS transistor
 SLi Source line (Data signal line) ($i = 1, 2, \dots, N$)
 GLj Gate line (Scanning signal line) ($j = 1, 2, \dots, 2M$)
 GshLj Charge sharing control signal line ($j = 1, 2, \dots, 2M$)
 10 S(i) Data signal ($i = 1, 2, \dots, N$)
 G(j) Scanning signal ($j = 1, 2, \dots, 2M$)
 Vcom Common voltage (Opposite voltage)
 Csh Charge sharing control signal
 Gsh Charge sharing control signal for a matrix substrate (Charge sharing control signal)
 15 Psh Charge sharing pulse
 Pw Pixel data write pulse
 Pb Black voltage application pulse
 Tsh Charge sharing period
 20 Thd Pixel data holding period (Pixel value holding period)

Best Modes for Carrying Out the Invention

[0054] Hereinafter, embodiments of the present invention will be described with reference to the accompanying drawings.

<1. First embodiment>

< 1.1 Configuration and operation >

[0055] A first embodiment will be described for an example of a liquid crystal display device using an active matrix substrate according to the present invention. Fig. 4 is a block diagram showing a configuration of the liquid crystal display device according to the present embodiment. Fig. 5 is a circuit diagram showing an equivalent circuit of the active matrix substrate 110 according to the present embodiment, and shows an electrical configuration of a part (part corresponding to neighboring four pixels) 101 of the active matrix substrate 110.

[0056] This liquid crystal display device includes: a source driver 300 as a data signal line drive circuit; a gate driver 400 as a scanning signal line drive circuit; a charge sharing control circuit 500; an active matrix type display part 100 using the active matrix substrate 110; and a display control circuit 200 for controlling the source driver 300, gate driver 400, and charge sharing control circuit 500.

[0057] The display part 100 of the above liquid crystal display device is composed of a pair of electrode substrates sandwiching a liquid crystal layer and has a polarizer attached to each of the electrode substrates on the outer surface thereof. One of the pair of electrode substrates is the active matrix substrate 110. As shown in Fig. 4 and Fig. 5, on an insulating substrate such as a glass plate of the active matrix substrate 110, there are formed gate lines GL1 to GL2M as a plurality of (2M) scanning signal lines, source lines SL1 to SLN as a plurality of (N) data signal lines intersecting each of these gate lines GL1 to GL2M, a plurality of (2M x N) pixel circuits provided corresponding to intersections of these gate lines GL1 to GL2M and the source lines SL1 to SLN, respectively, and a plurality of (2M) charge sharing control signal lines GshL1 to GshL2M. Each of the pixel circuits includes a TFT 10 as a switching element, the gate terminal of which is connected to the gate line GLj passing through the corresponding intersection and the source terminal of which is connected to the source line SLi passing through the intersection, and a pixel electrode Ep connected to the drain terminal (electrode) of the TFT 10.

[0058] On the other hand, the other one of the pair of electrode substrates is called an opposite substrate 120 and composed of a transparent insulating substrate such as a glass plate, over the entire surface of which a common electrode Ec is formed. The common electrode Ec and the above liquid crystal layer are provided commonly for the plurality of (2M x N) pixel circuits. Then, each of the pixel circuits on the active matrix substrate 110 constitutes a pixel formation portion together with the commonly provided common electrode Ec and liquid crystal layer, and, in the pixel formation portion, the pixel electrode Ep and the common electrode Ec form a liquid crystal capacitance Clc. Further, typically, a storage capacitance Ccs is provided in parallel to the liquid crystal capacitance Clc in order to hold a voltage of a pixel capacitance Cp securely. That is, on the active matrix substrate 110, a storage capacitance line CsL is disposed in parallel to each of the gate lines GLj, and the storage capacitance Ccs is formed by the storage capacitance line CsL

and the pixel electrode E_p opposite to the storage capacitance line CsL sandwiching an insulating film and the like. Accordingly, the pixel capacitance C_p , in which the data signal $S(i)$ is written and held as pixel data, is composed of the liquid crystal capacitance C_{lc} and the auxiliary capacitance C_{cs} .

[0059] Further, between the neighboring data signal lines SL_i and SL_{i+1} ($i = 1, 2, \dots, N - 1$) on the active matrix substrate 110 of the present embodiment, there is formed a TFT as a charge sharing switching element (hereinafter, called "charge sharing TFT") 12, the gate of which is connected to the charge sharing control signal line $GshL_j$ disposed along each of the gate lines GL_j ($j = 1, 2, \dots, 2M$). The source terminal and drain terminal of the charge sharing TFT 12 are connected to the neighboring data signal lines SL_i and SL_{i+1} , respectively, and all the neighboring source lines on the active matrix substrate 110 are short-circuited with each other when an active signal (voltage turning on the TFT 12) is applied to each of the charge sharing signal lines $GshL_j$. The charge sharing TFT 12 exists in numbers equal to the number of the gate lines GL_j ($2M$) for each of the source lines SL_i .

[0060] Fig. 1 is a plan view of a first pattern configuration example for the active matrix substrate 110 according to the present embodiment. A TFT 10 is provided in the neighborhood of the intersection of the gate line GL_j and the source line SL_i ($i = 1, 2, \dots, N$, and $j = 1, 2, \dots, 2M$) (hereinafter, the TFT 10 is called "pixel TFT 10" to be discriminated from the charge sharing TFT 12). In this example, the gate line GL_j also works as the gate electrode (terminal) 10g of the pixel TFT 10, the source electrode (terminal) 10s of the pixel TFT 10 is connected to the source line SL_i , and the drain electrode (terminal) 10d is extended onto the storage capacitance line CsL and connected to the pixel electrode E_p via a contact hole 14 provided in an interlayer insulating film.

[0061] Further, the charge sharing control signal line $GshL_j$ is disposed so as to be along the gate line GL_j , and the charge sharing TFT 12 is provided in the neighborhood of the charge sharing control signal line $GshL_j$. The gate electrode (terminal) of the charge sharing TFT 12 is connected to the charge sharing control signal line $GshL_j$ and, to the source electrode (terminal) and the drain electrode (terminal) of the charge sharing TFT 12, the neighboring source lines SL_i and SL_{i+1} are connected by the connection electrode portions SC_i and SC_{i+1} , respectively. A plurality of the charge sharing control signal lines $GshL_j$ are preferably provided in a display area, and the charge sharing control signal lines $GshL_j$ are provided in numbers equal to the number of the gate lines GL_j in this example as described above. Further, as shown in Fig. 1, the charge sharing control signal line $GshL_j$ may be provided in a non-display area. In this case, the charge sharing control signal line $GshL_k$ provided in the non-display area intersects the data signal lines SL_1 to SL_N in the non-display area. Then, the charge sharing TFT 12 connecting the neighboring source lines SL_i and SL_{i+1} ($i = 1, 2, \dots, N - 1$) is provided in the non-display area and the charge sharing TFT 12 is turned on and off by the charge sharing control signal line $GshL_k$ in the non-display area. With such a configuration, it is possible to accelerate charge transfer between the source lines in a charge sharing period while suppressing degradation of an aperture ratio.

[0062] In the example of Fig. 1, the connection electrode portions SC_i and SC_{i+1} which are connected to the source electrode and the drain electrode of the charge sharing TFT 12, respectively, do not overlap with the charge sharing control signal line $GshL_j$. With such a configuration, when the charge sharing TFT 12 is always in a conduction state caused by a defect such as a film residual in a channel portion of the charge sharing TFT 12 (case of TFT short-circuit fault), it becomes possible to repair the short-circuit fault by cutting the connection electrode portion SC_i or SC_{i+1} by laser irradiation or the like. Further, it is possible to reduce a probability of short-circuit between the charge sharing control signal line $GshL_j$ and the source line SL_i .

[0063] Further, in the example of Fig. 1, the lengths of both the connection electrode portions SC_i and SC_{i+1} are the same with each other. Thereby, when charge is transferred by the short-circuit of the neighboring source lines with each other, the charge transfer becomes symmetric.

[0064] Fig. 2 is a plan view showing a second pattern configuration example of the active matrix substrate 110 according to the present embodiment. Note that, in the second example, the same reference symbol is provided to a constituent as same as or corresponding to the constituent in the first example, and description thereof will be omitted. In the second example, the pixel electrode E_p overlaps with the charge sharing control signal line $GshL_j$ and the charge sharing TFT 12. This pattern configuration enables the pixel portion to be made larger and is effective to improve the aperture ratio. Note that it is preferable to provide an interlayer insulating film with a thickness of several microns between the pixel electrode E_p and the charge sharing TFT 12, from the stand point of reducing parasitic capacitance between each of the source lines connected to the charge sharing TFT 12 (connection electrode portions SC_i and SC_{i+1}) and the pixel electrode E_p . This interlayer insulating film uses, for example, an organic film made of acrylate resin or SOG (Spin-on-Glass) material, or a laminated structure of the organic film and silicon nitride ($SiNx$) film or the like.

[0065] Fig. 3 is a plan view showing a third pattern configuration example of the active matrix substrate 110 according to the present embodiment. Note that, in the third example, the same reference symbol is provided to a constituent as same as or corresponding to the constituent in the first example, and description thereof will be omitted. In the third example, the charge sharing control signal line $GshL_j$ works also as the gate electrode (terminal) of the charge sharing TFT 12, and, to the source electrode (terminal) and the drain electrode (terminal) of the charge sharing TFT 12, the neighboring source lines SL_i and SL_{i+1} are connected by the connection electrode portions SC_i and SC_{i+1} , respectively. Then, these charge sharing TFT 12 and the connection electrode portions SC_i and SC_{i+1} are covered with the charge

sharing control signal line GshLj via an insulating layer. Considering yield of producing the active matrix substrate, it is advantageous to employ the first example in which the connection electrode portions SC_i and SC_{i + 1} do not overlap with the charge sharing control signal line GshLj, but the third example has an advantage in improving the aperture ratio.

[0066] As shown in Fig. 4 and Fig. 5, the pixel electrode Ep of each of the pixel formation portions is provided with a potential corresponding to an image to be displayed by the source driver 300 and the gate driver 400 which operate as described below, and the common electrode Ec is provided with a predetermined potential Vcom from a power supply circuit (not shown in the drawing) (the predetermined potential Vcom is called "opposite voltage" or "common voltage"). Thus, a voltage according to the potential difference between the pixel electrode Ep and the common electrode Ec is applied to liquid crystal, and light transmitting amount in the liquid crystal layer is controlled by this voltage application, whereby image display is performed. Note that polarizers are used for the control of the light transmitting amount by the voltage application to the liquid crystal layer and the polarizers are disposed so as to realize a normally-black mode in the liquid crystal display device according to the present embodiment, for example. As shown in Fig. 4, the opposite voltage Vcom applied to the common electrode Ec is also provided to the storage capacitance line CsL.

[0067] The display control circuit 200 receives, from an external signal source, a digital video signal Dv representing an image to be displayed, a horizontal synchronization signal HSY and a vertical synchronization signal VSY corresponding to the digital video signal Dv, and a control signal Dc for controlling display operation, and generates and outputs the following signals as signals for displaying the image represented by the digital video signal Dv on the display part 100, based on these signals Dv, HSY, VSY, and Dc: a data start pulse signal SSP, a data clock signal SCK, a charge sharing control signal Csh, a digital image signal DA representing the image to be displayed (signal corresponding to the video signal Dv), a gate start pulse signal GSP, a gate clock signal GCK and a gate driver output control signal GOE. In more detail, after timing adjustment and the like are performed as needed with an internal memory, the video signal Dv is outputted as the digital image signal DA from the display control circuit 200, the data clock signal SCK is generated as a signal composed of a pulse corresponding to each pixel of the image represented by the digital image signal DA, the data start pulse signal SSP is generated as a signal which exhibits a high level (H level) for a predetermined period for each one horizontal period based on the horizontal synchronization signal HSY, the gate start pulse signal GSP is generated as a signal which exhibits the H level for a predetermined period in each one frame period (one vertical scanning period) based on the vertical synchronization signal VSY, the gate clock signal GCK is generated based on the horizontal synchronization signal HSY, and the charge sharing control signal Csh and the gate driver output control signal GOE are generated based on the horizontal synchronization signal HSY and the control signal Dc.

[0068] Among the signals generated in the display control circuit 200 as described above, the digital image signal DA, the charge sharing control signal Csh, the data start pulse signal SSP, and the data clock signal SCK are inputted into the source driver 300, and the gate start pulse signal GSP, the gate clock signal GCK, and the gate driver output control signal GOE are inputted into the gate driver 400. Further, the charge sharing control signal Csh is inputted also into the charge sharing control circuit 500.

[0069] The source driver 300, using the digital image signal DA, the data start pulse signal SSP and the data clock signal SCK, generates data signals S(1) to S(N) of analog voltages corresponding to pixel values in each horizontal scanning line of the image represented by the digital image signal DA for every one horizontal period (every 1H), and applies these data signals S(1) to S(N) to the source lines SL1 to SLN, respectively. The present embodiment employs a drive method in which the data signals S(1) to S(N) are outputted such that the polarity of the voltage applied to the liquid crystal layer is inverted every one frame period and also inverted every n gate lines (n is two or more) and every one source line, that is, an nH dot inversion drive method. Accordingly, the source driver 300 inverts the polarities of the applied voltages to the source lines SL1 to SLN every one source line and also inverts the polarity of the data signal S(i) applied to each of the source lines SLi every n horizontal periods. Here, a reference potential for the polarity inversion of the applied voltage to the source line is a DC level (potential corresponding to a DC component) of the data signals S(1) to S(N), and this DC level is not generally the same as the DC level of the common electrode Ec and different from the DC level of the common electrode Ec by a pull-in voltage ΔVd caused by a parasitic capacitance Cgd between the gate and drain of the TFT in each of the pixel formation portions. Note that, the DC level of the data signals S(1) to S(N) is assumed to be the same as the DC level of the common electrode Ec when the pull-in voltage ΔVd caused by the parasitic capacitance Cgd is sufficiently small compared to an optical threshold voltage Vth of the liquid crystal, and the polarities of the data signals S(1) to S(N), that is, the polarities of the applied voltages to the source lines can be assumed to be inverted every n horizontal periods with the potential Vcom of the common electrode Ec as a reference.

[0070] Fig. 6 is a block diagram showing a configuration of the source driver in the present embodiment. This source driver is composed of a data signal generation part 302 and an output part 304. The data signal generation part 302 generates analog voltage signals d(1) to d(N) corresponding to respective source lines SL1 to SLN from the digital image signal DA based on the data start pulse signal SSP and the data clock signal SCK. The configuration of the data signal generation part 302 is the same as that of a conventional source driver and description thereof will be omitted. The output part 304 performs impedance conversion on the analog voltage signal d(i) generated in the data signal generation part 302 and outputs the analog voltage signal d(i) as the data signal S(i) (i = 1, 2, ..., N).

[0071] Further, the source driver 300 employs the charge sharing method in which the neighboring source lines are short-circuited every one horizontal period for reducing power consumption and for improving horizontal line irregularity in the nH dot inversion drive operation. For this purpose, the output part 304 of the source driver 300 is configured as shown in Fig. 7. That is, the output part 304 receives the analog voltages $d(1)$ to $d(N)$ generated from the digital image signal DA, generates the data signals $S(1)$ to $S(N)$ as image signals to be transmitted to the source lines SL1 to SLN by performing the impedance conversion on these analog voltage signals $d(1)$ to $d(N)$, and includes N output buffers 31 serving as voltage followers for this impedance conversion. The output terminal of each of the buffers 31 is connected with a first MOS transistor SWa serving as a switching element, and the data signal $S(i)$ from each of the buffers 31 is outputted from the output terminal of the source driver 300 via the first MOS transistor SWa ($i = 1, 2, \dots, N$). Further, the neighboring output terminals of the source driver 300 are connected with each other by a second MOS transistor SWb serving as a switching element (thereby, the neighboring source lines are connected with each other by the second MOS transistor SWb). Then, to the gate terminal of the second MOS transistor SWb between these output terminals, the charge sharing control signal Csh is provided and, to the gate terminal of the first MOS transistor SWa connected to the output terminal of each of the buffers 31, an output signal of an inverter 33, that is, a logically inverted signal of the charge sharing control signal Csh is provided.

[0072] Accordingly, when the charge sharing control signal Csh is not active (low level), the first MOS transistor SWa is turned on (conduction state) and the second MOS transistor SWb is turned off (cut-off state), and thereby the data signal from each of the buffers 31 is outputted from the source driver 300 via the first MOS transistor SWa. On the other hand, when the charge sharing control signal Csh is active (high level), the first MOS transistor SWa is turned off (cut-off state) and the second MOS transistor SWb is turned on (conduction state), and thereby the data signal from each of the buffers 31 is not outputted (i.e., the application of the data signals $S(1)$ to $S(N)$ to the source lines SL1 to SLN is cut off) and the neighboring source lines in the display part 100 are short-circuited via the second MOS transistors SWb.

[0073] The source driver 300 of the present configuration generates the analog voltage signal $d(i)$ as a video signal whose polarity is inverted every n horizontal periods (nH), here, two horizontal periods (2H) for $n = 2$, as shown in (A) of Fig. 8, and the display control circuit 200, generates the charge sharing control signal Csh which exhibits the high level (H level) during such a short period Tsh as one horizontal blanking period of each of the analog voltage signals $d(i)$ as shown in (B) of Fig. 8. The period during which the charge sharing control signal Csh exhibits the H level is a period during which the neighboring data signal lines are short-circuited for the charge re-distribution and called a "charge sharing period".

[0074] As described above, each of the analog voltage signals $d(i)$ is outputted as the data signal $S(i)$ when the charge sharing control signal Csh exhibits the low level (L level), and the application of the data signals $S(1)$ to $S(N)$ to the source lines SL1 to SLN is cut off and also the neighboring source lines are short-circuited with each other when the charge sharing control signal Csh exhibits the H level. Then, since the present configuration employs the nH dot inversion drive method and the voltages of the neighboring source lines have polarities opposite to each other, the value exhibited by each of the data signals $S(i)$, that is, the voltage of each of the source lines SLi becomes a certain intermediate potential between the positive and negative polarity potentials in the charge sharing period Tsh. In the present liquid crystal display device, each of the data signals $S(i)$ changes the polarity with a DC level VSdc of the data signal $S(i)$ as a reference, the data signal $S(i)$ becomes to exhibit approximately the same level as the DC level VSdc of the data signal $S(i)$ for the charge sharing period Tsh as shown in (F) of Fig. 8. Note that an ideal data signal waveform is described here, and, in an actual case, the potential Vs of the source line can reach an intermediate potential approximately equal to the DC level VSdc in the charge sharing period Tsh, as shown in Fig. 10 to be described below, by an operation of the charge sharing TFT 12 connected to the charge sharing control signal line GshLj to be described below (hereinafter, this intermediate potential is denoted also by "VSdc"). Incidentally, a configuration to make the voltage of each of the source lines equal to the DC level VSdc of the data signal $S(i)$, by short-circuiting the neighboring source lines when the polarity of the data signal is inverted, is not limited to the configuration shown in Fig. 7.

[0075] The gate driver 400 selects sequentially one of the gate lines GL1 to GL2M for approximately one horizontal period in each frame period (each vertical scanning period) of the digital image signal DA in order to write each of the data signals $S(1)$ to $S(N)$ into each of the pixel formation portions (pixel capacitance of the pixel formation portion) based on the gate start pulse signal GSP, the gate clock signal GCK, and the gate driver output control signal GOE. That is, the gate driver 400 applies the scanning signals G(1) to G(2M), including pixel data write pulses Pw as shown in (C) and (D) of Fig. 8, to the gate lines GL1 to GL2M, respectively. Thereby, the gate line GLj, to which the pulse Pw is applied, goes into a selected state and the pixel TFT 10 connected to the gate line GLj in the selected state becomes on-state (pixel TFT 10 connected to the gate line in an unselected state becomes off-state). Here, the pixel data write pulse Pw exhibits the H level during the effective scanning period corresponding to a display period in one horizontal period (1H).

[0076] While a certain pixel TFT 10 is in the on-state by the application of the pixel data write pulse Pw, the potential of the source line SLi connected to the source terminal of the pixel TFT is provided to the pixel electrode Ep via the pixel TFT 10. Thereby the data signal $S(i)$ of the voltage of the source line SLi is written into the pixel capacitance Cp

corresponding to the pixel electrode Ep. Subsequently, when the pixel TFT 10 becomes off-state, the voltage written into the pixel capacitance Cp is held as the pixel data in the pixel capacitance Cp until the next pixel data write pulse Pw is applied to the gate line GLj connected to the pixel TFT (until the next selection of the gate line GLj).

[0077] The charge sharing control circuit 500 generates the charge sharing control signal Gsh for the active matrix substrate including a charge sharing pulse Psh as shown in (E) of Fig. 8 based on the charge sharing signal Csh, and applies the charge sharing control signal Gsh to each of the charge sharing control signal lines GshL1 to GshL2M. Thereby, the charge sharing control signal lines GshL1 to GshL2M are selected at the same time and all the charge sharing TFTs 12 become on-state for the charge sharing period Tsh. Here, the charge sharing pulse Psh exhibits the H level for the charge sharing period Tsh corresponding to the blanking period in one horizontal period (1 H).

[0078] Fig. 9 is a detailed control signal waveform chart showing an operation of an active matrix substrate in a conventional liquid crystal display device with a 2H dot inversion drive employing the charge sharing method. In the conventional liquid crystal display device, since the voltage Vs of each of the source lines SLi does not reach the intermediate potential VSdc within the charge sharing period Tsh, a difference is caused in the charged amount of the pixel capacitance between a first line and a second line in two lines of a polarity inversion unit and this difference sometimes appears in luminance difference to cause horizontal line irregularity to be viewed.

[0079] On the other hand, in the present embodiment, in addition to the charge sharing operation in the output part 304 of the source driver 300 (refer to Fig. 7), the source lines SL1 to SLN are short-circuited with each other for the charge sharing period Tsh by the charge sharing TFT 12 connected to each of the charge sharing control signal lines GshLj in the active matrix substrate 110. Thereby, the charge transfer between the source lines is accelerated. As a result, as shown in Fig. 10, the potential Vs of each of the source lines SLi reaches the intermediate potential equal to the DC level VSdc of the data signal S(i) in the charge sharing period Tsh and thereby the occurrence of the horizontal irregularity can be suppressed. Further, in the present embodiment, the charge sharing TFT 12 exists for each pixel and the charge sharing control signal line GshLj for turning on and off the charge sharing TFT 12 exists for each one pixel line, and thereby these dispositions of the charge sharing TFT 12 and the charge sharing control signal line GshLj match the pixel arrangement of the image to be formed on the active matrix substrate 110 and the addition of the charge sharing TFT 12 and the charge sharing control signal line GshLj does not disturb the regularity of the pixel arrangement.

<1.2 Problem>

[0080] Typically, in the active matrix type liquid crystal display device using TFTs, a parasitic capacitance Cgd exists between the gate and drain of the pixel TFT 10 in each of the pixel formation portions. Due to the existence of the parasitic capacitance Cgd, the voltage of the pixel electrode (hereinafter, called "pixel voltage") Vd in each of the pixel formation portions decreases according to the ratio of the pixel capacitance Cp and the parasitic capacitance Cgd when the TFT 10 connected to the pixel electrode is switched from an on-state (conduction state) to an off-state (cut-off state) (hereinafter, the change of the pixel voltage caused by the parasitic capacitance Cgd is called "level shift" and this change amount is called "pull-in voltage" and denoted by ΔVd). Specifically, as shown in (A) and (B) of Fig. 11, when a gate voltage Vg(j), which is the voltage of the scanning signal G(j) applied to any one of the gate lines GLj, becomes an ON voltage Vgh (time t1 or t3) and the voltage Vsn or Vsp of the source line SLi is applied to the pixel electrode via the pixel TFT 10 connected to the gate line GLj, and then the gate voltage Vg(j) changes to an OFF voltage Vgl (time t2 or t4), the pixel voltage Vd decreases by the pull-in voltage ΔVd represented by the following formula (j = 1, 2, ..., 2M, and i = 1, 2, ..., N).

$$\Delta Vd = (Vgh - Vgl) \cdot Cgd / (Cp + Cgd) \cdot \dots \cdot (1)$$

Since the dielectric constant of the liquid crystal changes according to a voltage applied thereto and thereby the pixel capacitance Cp has a different value depending on the gradation of the pixel. Therefore, the pull-in voltage ΔVd also changes depending on the gradation of the pixel.

[0081] Typically, in the liquid crystal display device, the polarity of the applied voltage to the liquid crystal is inverted every predetermined period with respect to the potential of the common electrode Ec, that is, the opposite voltage, and the light transmittance of the liquid crystal changes according to the effective value of the applied voltage thereto. Accordingly, for obtaining a display without a flicker, it is necessary to correct the source line voltage (source voltage), that is, the data signal value by the pull-in voltage ΔVd relative to the opposite voltage such that the average value of the applied voltage to the liquid crystal becomes "0". The pull-in voltage ΔVd changes depending on the gradation of the pixel as described above. Therefore, for obtaining a display without a flicker for all the gradations, the source voltage is corrected according to the gradation of the pixel to be displayed. That is, the correction amount of the source voltage depends on the display gradation.

[0082] Meanwhile, the source voltage immediately after the charge sharing period T_{sh} (hereinafter, called "charge sharing voltage") is approximately equal to an average value of the voltages of all the source lines from each of the source drivers immediately before the charge sharing period. Since the correction value of the source voltage depends on the pixel gradation as described above, the charge sharing voltage depends on the display gradation as shown in Fig. 12.

[0083] Fig. 12 shows a voltage waveform $W_d(B)$ of a pixel voltage for displaying a pixel having high luminance (hereinafter, called "high luminance pixel voltage") $V_d(B)$ and a voltage waveform $W_d(D)$ of a pixel voltage for displaying a pixel having low luminance (hereinafter, called "low luminance pixel voltage") $V_d(D)$, and a voltage waveform $W_s(B)$ of a data signal voltage (hereinafter, called "high luminance source voltage") $V_s(B)$ for providing the high luminance pixel voltage $V_d(B)$ and a voltage waveform $W_s(D)$ of a data signal voltage (hereinafter, called "low luminance source voltage") $V_s(D)$ for providing the low luminance pixel voltage $V_d(D)$. Note that the time axis scale is different between the voltage waveform $W_d(B)$ of the high luminance pixel voltage or the voltage waveform $W_d(D)$ of the low luminance pixel voltage and the voltage waveform $W_s(B)$ of the high luminance source voltage or the voltage waveform $W_s(D)$ of the low luminance source voltage. Here, in Fig. 12, " $V_{sp}(B)$ " and " $V_{sn}(B)$ " indicate the maximum value of the high luminance source voltage $V_s(B)$ and the minimum value of the high luminance source voltage $V_s(B)$, respectively, and " $V_{sp}(D)$ " and " $V_{sn}(D)$ " indicate the maximum value of the low luminance source voltage $V_s(D)$ and the minimum value of the low luminance source voltage $V_s(D)$, respectively. Further, " $V_{csh}(B)$ " and " $V_{csh}(D)$ " indicate a charge sharing voltage when the high luminance source voltage $V_s(B)$ is provided to the source line, and a charge sharing voltage when the low luminance source voltage $V_s(D)$ is provided to the source line, respectively.

[0084] As apparent from Fig. 12, since the pull-in voltage ΔV_d is different between the high luminance pixel voltage $V_d(B)$ and the low luminance pixel voltage $V_d(D)$, and the correction amount is different between the high luminance source voltage $V_s(B)$ and the low luminance source voltage $V_s(D)$, there is a difference between the charge sharing voltage $V_{csh}(B)$ when the high luminance source voltage $V_s(B)$ is provided to the source line and the charge sharing voltage $V_{csh}(D)$ when the low luminance source voltage $V_s(D)$ is provided to the source line. That is, the charge sharing voltage V_{csh} changes depending on the display gradation.

[0085] In the liquid crystal display device of the first embodiment, the charge sharing voltage V_{csh} , which is the source voltage immediately after the charge sharing period T_{sh} , changes depending on the display gradation because of the correction of the source voltage (refer to (B) of Fig. 12). As a result, the voltage V_{Sdc} shown in Fig. 10 changes depending on a display pattern and sometimes the horizontal irregularity can not be suppressed. Accordingly, a second embodiment will be described next for an example of a liquid crystal display device configured so as to solve such a problem in the first embodiment.

<2. Second embodiment>

[0086] An entire configuration of a liquid crystal display device according to the present embodiment is the same as that of the liquid crystal display device according to the first embodiment as shown in Fig. 4, and a part as same as or corresponding to that in the first embodiment is denoted by the same reference symbol and detailed description will be omitted. In the present embodiment, an internal configuration of the source driver is different from that of a source driver 300 in the first embodiment. Accordingly, the configuration of the source driver will be described below.

[0087] The source driver in the present embodiment is also composed of the data signal generation part 302 and the output part 304 as in the first embodiment shown in Fig. 6, but the internal configuration of the output part 304 is different from that in the first embodiment. The internal configuration and operation of the data signal generation part 302 is the same as those in the conventional case and the first embodiment, and description thereof will be omitted.

[0088] Fig. 13 is a circuit diagram showing a first configuration example of the output part 304 in the source driver of the present embodiment. The output part 304 in this configuration example includes a switch circuit composed of N first MOS transistors SW_a and $(N - 1)$ second MOS transistors SW_b serving as switching elements, and an inverter 33, and the output part 304 in this configuration example is the same as the output part 304 in the source driver 300 of the first embodiment (Fig. 7) in this point. However, the output part 304 in the first configuration example, different from the output part 304 in the source driver 300 of the first embodiment, includes a charge sharing voltage fixing power supply 35, and the positive terminal of the charge sharing voltage fixing power supply 35 is connected to the output terminal of the source driver to be connected to any one of the source lines SL_i via a third MOS transistor SW_{b2} serving as a switching element (in an example shown in Fig. 13, the positive terminal is connected to the output terminal to be connected to n th source line SL_n). Then, the gate terminal of the third MOS transistor SW_{b2} is provided with the charge sharing control signal C_{sh} and the negative terminal of the charge sharing voltage fixing power supply 35 is grounded. The charge sharing voltage fixing power supply 35 is a voltage supply part providing a fixed voltage E_{sh} equal to V_{Sdc} . The voltage E_{sh} may have a value in a voltage range from a value of the negative-polarity data signal $S(i)$ for a zero gradation to a value of the positive-polarity data signal $S(i)$ for the zero gradation but preferably has a middle value between the maximum and minimum values of the data signal $S(i)$.

[0089] Also in the first configuration example as described above as in the source driver of the first embodiment, based

on the charge sharing control signal Csh, the analog voltage signals d(1) to d(N) generated in the data signal generation part 302 are outputted as the data signals S(1) to S(N) via the buffers 31 and applied to the source lines SL1 to SLN for the period except for the charge sharing period Tsh (for the effective scanning period), respectively, and the application of the data signals S(1) to S(N) to the source lines SL1 to SLN is cut off and also the neighboring source lines are short-circuited with each other (resultantly, all the source lines SL1 to SLN are short-circuited with each other) for the charge sharing period Tsh. Additionally, in the first configuration example, the voltage Esh of the charge sharing voltage fixing power supply 35 is provided to each of the source lines SLi (i = 1 to N) for the charge sharing period Tsh (refer to Fig. 13). Thereby, even when the correction amount of the source voltage changes depending on the display gradation for compensating the gradation dependence of the pull-in voltage ΔV_d , the charge sharing voltage can be always made the same voltage Esh for the charge sharing period Tsh. Thereby, it is possible to suppress the occurrence of the horizontal irregularity. Note that the voltage Esh of the voltage supply part is determined preferably to have the middle value between the maximum and minimum values of the data signal S(i) as described above, and thereby the charged amount of the pixel capacitance can be made uniform not depending on the polarity of the data signal S(i) to be applied to the pixel electrode.

[0090] Meanwhile, as apparent from Fig. 13, a number of source lines are connected to the charge sharing voltage fixing power supply 35 via the plurality of MOS transistors SWb in the first configuration example. Therefore, it takes a time until the voltages of all the source lines SL1 to SLN reach the same charge sharing voltage Esh and are stabilized.

[0091] Accordingly, a second configuration example will be described next for an output part of the source driver which is preferable for causing all the source lines SL1 to SLN to have the same voltage Esh in a short time within the charge sharing period Tsh.

[0092] Fig. 14 is a circuit diagram showing the second configuration example of the output part 304 in the source driver of the present embodiment. In this configuration example, a constituent of the output part 304 as same as that in the first embodiment is denoted by the same reference symbol and description thereof will be omitted.

[0093] The output part 304 in the present configuration example is also provided with a second MOS transistor SWc serving as a switching element for each of the source lines SLi (i = 1 to N) as in the first configuration example. However, while the switch circuit is configured in the first configuration example such that the second MOS transistor SWb is inserted one by one between the neighboring source lines, the switch circuit is configured in the present configuration example such that the second MOS transistor SWc is inserted one by one between each of the source lines SLi and the charge sharing voltage fixing power supply 35. That is, in the present configuration example, the output terminal of the source driver to be connected to each of the source lines SLi is connected to the positive terminal of the charge sharing voltage fixing power supply 35 via any one of these second MOS transistors SWc. Then, the charge sharing control signal Csh is provided to all of the gate terminals of the second MOS transistors SWc.

[0094] Also in the second configuration example as described above, as in the source driver in the first configuration example or the first embodiment, the analog voltage signals d(1) to d(N) generated based on the charge sharing control signal Csh in the data signal generation part 302 are outputted as the data signals S(1) to S(N) via the buffers 31 and applied to the source lines SL1 to SLN for the period except for the charge sharing period Tsh (for the effective scanning period), respectively, and the application of the data signals S(1) to S(N) to the source lines SL1 to SLN is cut off and also all the source lines SL1 to SLN are short-circuited with each other for the charge sharing period Tsh. Additionally, the voltage Esh of the charge sharing voltage fixing power supply 35 is provided to each of the source lines SLi (i = 1 to N) for the charge sharing period Tsh (refer to Fig. 14). Thereby, even when the correction amount of the source voltage changes depending on the display gradation for compensating the gradation dependence of the pull-in voltage ΔV_d , the charge sharing voltage can be always made the same voltage Esh for the charge sharing period Tsh. Furthermore, in the second configuration example, each of the source lines SLi (i = 1 to N) is provided with the voltage Esh of the charge sharing voltage fixing power supply 35 via only one of the MOS transistors SWc for the charge sharing period Tsh. Accordingly, it is possible to reduce the time for causing the voltage of each of the source lines SLi to be the same voltage Esh in the charge sharing period Tsh, and the second configuration example is a preferable configuration for suppressing the occurrence of the horizontal irregularity.

<3. Third embodiment>

[0095] The present invention can be applied to a liquid crystal display device employing a drive method in which an upper half part and a lower half part of a display part 100 are driven by different drive circuits (hereinafter, called "upper-and-lower division drive method"). A third embodiment will be described below for such a liquid crystal display device using an active matrix substrate according to the present invention.

[0096] Fig. 15 is a block diagram showing a configuration of a liquid crystal display device according to the present embodiment. In an active matrix substrate 112 of this liquid crystal display device, each source line is composed of an upper source line SLi(upper) and a lower source line SLi(lower) which are electrically separated from each other at center. The other constituents of the active matrix substrate 112 are the same as those of the active matrix substrate

110 in the first embodiment. Accordingly, a pixel circuit configuration of the active matrix substrate 112 is also the same as that of the pixel circuit of the active matrix substrate 110 in the first embodiment and an equivalent circuit of a part 101 corresponding to neighboring four pixels is as shown in Fig. 5.

[0097] Corresponding to the configuration which separates each of the source lines of the active matrix substrate 112 into the upper and lower, a source driver is composed of an upper source driver 300a driving the upper source lines SL1 (upper) to SLN(upper) and a lower source driver 300b driving the lower source lines SL1(lower) to SLN(lower). Further, a gate driver is composed of an upper gate driver 400a driving the M gate lines GL1 to GLM which intersect the upper source lines SL1(upper) to SLN(upper) and a lower gate driver 400b driving the M gate lines GLM + 1 to GL2M which intersect the lower source lines SL1(lower) to SLN(lower). Then, a charge sharing control circuit is composed of an upper CSH control circuit 500a applying the charge sharing control signal Gsh for the matrix substrate to the M charge sharing control signal lines GshL1 to GshLM which intersect the upper source lines SL1(upper) to SLN(upper) and a lower CSH control circuit 500b applying the charge sharing control signal Csh for the matrix substrate to the M charge sharing control signal lines GshLM + 1 to GshL2M which intersect the lower source lines SL1(lower) to SLN(lower).

[0098] Further, a display control circuit 200 generates an upper digital image signal DAa to be supplied to the upper source driver 300a and a lower digital image signal DAb to be supplied to the lower source driver 300b, as the digital image signal to be supplied to the source driver, and generates an upper gate start pulse signal GSPa to be supplied to the upper gate driver 400a and a lower gate start pulse signal GSPb to be supplied to the lower gate driver 400b, as the gate start pulse signal to be supplied to the gate driver. The upper source driver 300a generates data signals Sa(1) to Sa(N) to be applied to the upper source lines SL1(upper) to SLN(upper), respectively, using the upper digital image signal DAa, and the lower source driver 300b generates data signals Sb(1) to Sb(N) to be applied to the lower source lines SL1(lower) to SLN(lower), respectively, using the lower digital image signal DAb. The upper gate driver 400a generates scanning signals G(1) to G(M) to be applied to the gate lines GL1 to GLM, respectively, using the upper gate start pulse GSPa, and the lower gate driver 400b generates scanning signals G(M + 1) to G(2M) to be applied to the gate lines GLM + 1 to GL2M, respectively, using the lower gate start pulse GSPb. The configuration of this liquid crystal display device other than that described above is the same as in the first embodiment, and the same part is denoted by the same symbol and description thereof will be omitted.

[0099] Also in the liquid crystal display device having the configuration as described above, in addition to the charge sharing operation in the upper and lower source drivers 300a and 300b for the charge sharing period Tsh, the source lines SL1 to SLN are short-circuited with each other in the active matrix substrate 112 by the charge sharing TFT 12 connected to each of the charge sharing control signal lines GshLj and thereby it is possible to obtain the same effect as that in the first embodiment.

<Fourth embodiment>

[0100] Next, a fourth embodiment of the present invention will be described for an example of a liquid crystal display device according to the present invention employing a method realizing an impulse type display of an image by inserting a black display period (black insertion). An entire configuration of the liquid crystal display device according to the present embodiment is the same as that of the liquid crystal display device according to the first embodiment as shown in Fig. 4, and the same or corresponding part is denoted by the same reference symbol and detailed description thereof will be omitted. In the present embodiment, an internal configuration of a gate driver is different from that of a typical gate driver such as the gate driver 400 in the first embodiment. Accordingly, the present embodiment will be described focused on the gate driver.

[0101] The gate driver in the present embodiment selects sequentially the gate lines GL1 to GLM for approximately one horizontal period (effective scanning period) per gate line in each frame period of the digital image signal GA in order to write each of the data signals S(1) to S(N) into each of the pixel formation portions (pixel capacitance Cp thereof) based on a gate start pulse GSP, gate clock signal GCK and gate driver output control signal GOEr (r = 1, 2, ..., q), and also, for the black insertion to be described below, selects the gate line GLj (j = 1 to 2M) for a predetermined period (period corresponding to a black voltage application pulse Pb shown in Fig. 17 to be described below) within the charge sharing period Tsh selected preliminarily for each of the scanning signal lines GLj among the charge sharing periods Tsh, in which the charge sharing control signal Csh from the display control circuit 200 exhibits the H level in respective horizontal periods.

[0102] (A) and (B) of Fig. 16 are block diagrams showing a configuration example of the gate driver 400. The gate driver 400 of this configuration example is composed of gate driver IC (Integrated Circuit) chips 411, 412, ..., 41q which are a plurality of (q) partial circuits including shift registers.

[0103] Each of the gate driver IC chips includes, as shown in (B) of Fig. 16, a shift register 40, first and second AND gates 41 and 43 provided corresponding to each stage of the shift register 40, and an output part 45 outputting the scanning signals G1 to Gp based on the output signals g1 to gp of the second AND gates 43, and receives a start pulse signal SPi, a clock signal CK, and an output control signal OE from outside. The start pulse SPi is provided to the input

end of the shift register 40 and the shift register 40 outputs via output end thereof a start pulse signal SPo to be inputted into the following gate driver IC chip. Further, a logically inverted signal of the clock signal CK is inputted into each of the first AND gates 41 and a logically inverted signal of the output control signal OE is inputted into each of the second AND gates 43. Then, an output signal Qk (k = 1 to p) from each stage of the shift register 40 is inputted into the first AND gate 41 corresponding to the stage, and an output signal of the first AND gate 41 is inputted into the second AND gate 43 corresponding to the stage.

[0104] The gate driver in the present configuration example is implemented by a cascade connection of the plurality (q) of gate driver IC chips 411 to 41q having the above configuration as shown in (A) of Fig. 16. That is, the output end of the shift register in each of the gate driver IC chips (output terminal of the start pulse signal SPo) is connected to the input end of the shift register in the next gate driver IC chip (input terminal of the start pulse signal SPi) such that the shift registers 40 in the gate driver IC chips 411 to 41q form one shift register (hereinafter, the shift register formed by the cascade connection in this manner is called "combined shift register"). Note that, to the input end of the shift register in the top gate driver IC chip 411, the gate start pulse signal GSP is inputted from the display control circuit 200, and the output end of the shift register in the last gate driver IC chip 41 q is not connected to outside. Further, the gate clock signal GCK from the display control circuit 200 is inputted commonly into each of the gate driver IC chips 411 to 41q as the clock signal CK. Meanwhile, the gate driver output control signal GOE generated in the display control circuit 200 is composed of the 1st to qth gate driver output control signals GOE1 to GOEq, and these gate driver output control signals GOE1 to GOEq are inputted individually into the gate driver IC chips 411 to 41q as the output control signals OE, respectively.

[0105] Next, the operation of the gate driver in the above configuration example will be described with reference to Fig. 17. The display control circuit 200, as shown in (A) of Fig. 17, generates as the gate start pulse signal GSP a signal which exhibits the H level (active) for a period Tspw corresponding to the pixel data write pulse Pw and a period Tspbw corresponding to three black voltage application pulses, and also generates the gate clock signal GCK which exhibits the H level for a predetermined period for every one horizontal period (1H) as shown in (B) of Fig. 17. When such gate start pulse signal GSP and gate clock signal GCK are inputted into the gate driver of Fig 16A, the output signal Q1 of the first stage of the shift register 40 in the top gate driver IC chip 411 is outputted as a signal as shown in (C) of Fig. 17. The output signal Q1 includes one pulse Pqw corresponding to the pixel data write pulse Pw and one pulse Pqbw corresponding to the three black voltage application pulses Pb in each frame period, and these two pulses Pqw and Pqbw are spaced apart by a predetermined period. Such two pulses Pqw and Pqbw are transferred sequentially in the combined shift register in the gate driver according to the gate clock signal GCK. According to the transfer, a signal having a waveform as shown in (C) of Fig. 17 is outputted from each stage of the combined shift register sequentially shifted by one horizontal period (1H).

[0106] Further, the display control circuit 200 generates the gate driver output control signals GOE1 to GOEq to be applied to the gate driver IC chips 411 to 41q which compose the gate driver, respectively, as described above. Here, the gate driver output control signal GOEr to be provided to the rth gate driver IC chip 41r exhibits the L level for a period in which the pulse Pqw corresponding to the pixel data write pulse Pw is outputted from any one of the stages of the shift register 40 in the gate driver IC chip 41r except for exhibiting the H level for a predetermined period Tad near the gate clock signal GCK pulse for adjusting the pixel data write pulse Pw, and exhibits the H level for the other period except for exhibiting the L level for a predetermined period Toe immediately after the gate clock signal GCK exhibits a change from the H level to the L level. Note that the predetermined period Toe is set so as to be included in any one of the charge sharing periods Tsh. For example, the gate driver output control signal GOE1 as shown in (D) of Fig. 17 is provided to the top gate driver IC chip 411. Note that a pulse (this pulse corresponds to the H level exhibited by the output control signal GOEr for the above predetermined period Tad and is called "write period adjustment pulse", hereinafter) included in the gate driver output control signals GOE1 to GOEq for adjusting the pixel data write pulse Pw, rises earlier than the rise of the gate clock signal GCK or falls later than the fall of the gate clock signal GCK according to the required pixel data write pulse Pw. Further, the pixel data write pulse PW may be adjusted by using only the gate clock signal GCK without using such a write period adjustment pulse.

[0107] In each of the gate driver IC chips 41r (r = 1 to q), internal scanning signals g1 to gp are generated by the first and second AND gates 41 and 43, based on the output signal Qk (k = 1 to p) of each stage in the shift register 40 as described above, the gate clock signal GCK, and the gate driver output control signal GOEr, and these internal scanning signals g1 to gp are level-converted in the output part 45 and outputted as the scanning signals G1 to Gp to be applied to the gate lines. Thereby, as shown in (E) and (F) of Fig. 17, the pixel data write pulse Pw is applied sequentially to the gate lines GL1 to GLM, and also, to each of the gate lines GLj (j = 1 to 2M), the black voltage application pulse Pb is applied when a predetermined time Thd has elapsed since the end point of the pixel data write pulse Pw application (fall point) and then the two black voltage application pulses Pb are applied at an interval of one horizontal period (1H). After the three black voltage application pulses Pb are applied in this manner, the L level is held until the pixel data write pulse Pw is applied in the next frame period.

[0108] Next, with reference to Fig. 18, the drive of the display part 100 (Fig. 4 and Fig. 5) by the above source driver

300 and gate driver 400 in the present embodiment will be described. In each of the pixel formation portions of the display part 100, by the application of the pixel data write pulse P_w to the gate line GL_j connected to the gate terminal of TFT 10 included therein, the TFT 10 is turned on and the voltage of the source line SL_i connected to the source terminal of the TFT 10 is written into the pixel formation portion as the value of the data signal $S(i)$. That is, the voltage of the source line SL_i is held in the pixel capacitance C_p . After that, the gate line GL_j is in the unselected state for the period T_{hd} until the black voltage application pulse P_b appears and thereby the voltage written into the pixel formation portion is held as it is.

[0109] The black voltage application pulse P_b is applied to the gate line GL_j in the charge sharing period T_{sh} after the period of the unselected state (hereinafter, called "pixel data holding period") T_{hd} . As described above, in the charge sharing period T_{sh} , the value of each of the data signals $S(i)$, that is, the voltage of each of the source lines SL_i becomes approximately equal to the DC level of the data signal $S(i)$ (i.e., black voltage). Therefore, the voltage held in the pixel capacitance C_p of the pixel formation portion changes toward a voltage corresponding to the black display (black voltage) when the black voltage application pulse P_b is applied to the gate line GL_j . However, the width of the black voltage application pulse P_b is short, and therefore the three black voltage application pulses P_b are applied sequentially to the gate line GL_j at an interval of one horizontal scanning period (1H) in each frame period as shown in (D) and (E) of Fig. 18, in order to cause the voltage held in the pixel capacitance C_p to be the black voltage securely. Thereby, the luminance of the pixel formed by the pixel formation portion connected to the gate line GL_j (transmitted light amount determined by the voltage held in the pixel capacitance) $L(j, i)$ changes as shown in (H) of Fig. 18.

[0110] Accordingly, in one display line corresponding to the pixel formation portions connected to each of the gate lines GL_j , display is performed according to the digital image signal DA during the pixel data holding period T_{hd} and then the black display is performed during a period T_{bk} from the time when the above three black voltage application pulses P_b are applied to the time when the pixel data write pulse P_w is next applied to the gate line GL_j . In this manner, the period when the black display is performed (hereinafter, called "black display period") T_{bk} is inserted into each frame period and thereby the impulse type display is realized in the liquid crystal display device.

[0111] As apparent from (D) and (E) of Fig. 18, since the timing when the pixel data write pulse P_w appears shifts by one horizontal scanning period (1H) every one of the scanning signals $G(j)$, timing when the black voltage application pulse P_b appears also shifts by one horizontal scanning period (1H) every one of the scanning signals $G(j)$. Therefore, the black display period T_{bk} also shifts by one horizontal scanning period (1H) every one display line and the black insertion having the same length is performed for all the display lines. In this manner, a sufficient black insertion period is secured without making the charging period shorter in the pixel capacitance C_p for writing the pixel data. Further, it is not necessary to increase the operation speed of the source driver 300 or the like for the black insertion.

[0112] In the fourth embodiment described so far, as shown in (D) to (G) of Fig. 18, the pixel data write pulse P_w and the black voltage application pulse P_b overlap with each other temporally. For example, the pixel data write pulse P_w of the scanning signal $G(j + m)$ overlaps temporally with the black voltage application pulse P_b of the scanning signal $G(j)$, and the pixel data write pulse P_w of the scanning signal $G(j + m + 1)$ overlaps temporally with the black voltage application pulse P_b of the scanning signal $G(j)$ and $G(j + 1)$. Here, when the number of the black voltage application pulses P_b included in each of the scanning signal $G(j)$ ($j = 1, 2, \dots, 2M$) within one frame period (hereinafter, called "number of the black voltage application pulses per one frame") is increased, the number of the black voltage application pulses P_b overlapping temporally with the pixel data write pulses P_w also increases. Since the number of the gate lines which exhibit the H level at the same time increases thereby among the gate lines GL_1 to GL_{2M} on the active matrix substrate 100, the load of the power supply for providing the H level increases and the waveforms of the pixel data write pulse P_w and the black voltage application pulse P_b are deteriorated. The temporal width of the black voltage application pulse P_b is extremely shorter than that of the pixel data write pulse P_w , and therefore this waveform deterioration affects mainly the black voltage application pulse P_b . As apparent from (H) of Fig. 18, when the number of the black voltage application pulses P_b per one frame is increased from one, the pixel luminance in the black display period T_{bk} becomes to have a more sufficient black level, but, since the effect of the waveform deterioration to the black voltage application pulse also increases, the pixel luminance in the black display period T_{bk} can not be made to have a sufficient black level when the number of the black voltage application pulses per one frame is increased more than a certain number. Further, recently in the display device using the active matrix substrate, there is required the resolution improvement or a technique for improving moving image visibility such as one to write pixel data of an interpolated image into the pixel formation portion by increasing the frame frequency, and in this situation, there is a concern that the waveform deterioration of the pixel data write pulse P_w , caused by the temporal overlapping of the pixel data write pulse P_w and the black voltage application pulse P_b , leads to a shortage of pixel data writing (shortage of charging the pixel capacitance).

[0113] Accordingly, it is preferable to have a configuration in which the scanning signals $G(1)$ to $G(2M)$ are applied to the respective gate lines GL_1 to GL_{2M} on the active matrix substrate 100 such that the pixel data write pulse P_w and the black voltage application pulse P_b do not overlap with each other temporally, as shown in Fig. 19. Differently from the fourth embodiment (refer to Fig. 18), in the example shown in Fig. 19, the pixel data write pulse P_w in each of the scanning signals $G(k)$ ($k = 1$ to $2M$) does not overlap temporally with the black voltage application pulse in any of the

scanning signals ((D) to (G) of Fig. 19). By the gate driver being configured to output such scanning signals G(1) to G(2M), the number of the gate lines which exhibit the H level at the same time (the number of the scanning signals which exhibit the H level at the same time) is decreased. As a result, it is possible to suppress the shortage of charging in the pixel capacitance caused by the waveform deterioration of the pixel data write pulse Pw, while causing the pixel luminance to have a sufficient black level in the black display period T_{bk}.

<5. Variation>

[0114] In the first embodiment, as the charge sharing switching element, the MOS transistor SW_b is provided in the output part 304 of the source driver (Fig. 7) and also the charge sharing TFT 12 is provided on the active matrix substrate 110 (Fig. 4 and Fig. 5). However, the charge sharing switching element (MOS transistor SW_b) may be omitted in the output part 304 of the source driver as far as the potential of the source line SL_i can be made to reach the intermediate potential equal to the DC level V_{Sdc} of the data signal S(i) within the charge sharing period T_{sh}.

[0115] Further, in the active matrix substrate in the first to fourth embodiments, the charge sharing control signal line GshL_j is disposed along each of the gate lines GL_j (j = 1, 2, ..., 2M), and the charge sharing TFT 12 is provided for each of the source lines SL_i (i = 1, 2, ..., N) in numbers equal to the number of the gate lines (2M) (Fig. 4 and Fig. 5). However, the present invention is not limited to such a configuration, and any configuration may be used as far as the potential of each of the source lines can be made to reach the intermediate potential equal to the DC level V_{Sdc} of the data signal S(i) or the potential E_{sh} of the charge sharing voltage fixing power supply 35 within the charge sharing period T_{sh}.

[0116] For example, instead of the configuration of the first embodiment shown in Fig. 4 and Fig. 5, the charge sharing control signal line may be disposed every other one of the gate lines GL_j and the charge sharing TFT 12 may be disposed for each of the source lines SL_i in numbers (M) equal to a half of the number of gate lines (2M) as shown in Fig. 20 and Fig. 21. Here, Fig. 21 is a circuit diagram showing an equivalent circuit of a part (corresponding to four pixels) 104 of the active matrix substrate 114 in the liquid crystal display device shown in Fig. 20.

[0117] Further, in stead of the configuration of the first embodiment shown in Fig. 4 and Fig. 5, the charge sharing control signal lines GshL_a and GshL_b may be disposed only at the both ends of the source lines SL₁ to SL_N, respectively, and the charge sharing TFT 12 may be disposed one by one at one end and the other end of each of the source lines SL_i, as shown in Fig. 22 and Fig. 23. Here, Fig. 23 is a circuit diagram showing an equivalent circuit of a part (corresponding to two pixel columns) 106 of the active matrix substrate 116 in the liquid crystal display device shown in Fig. 22.

[0118] Meanwhile, the number of charge sharing TFTs 12 necessary for causing the potential of each of the source lines to reach the above intermediate potential V_{Sdc} or the fixed potential E_{sh} within the charge sharing period T_{sh} depends on a wiring resistance and a wiring capacitance of the source line or an available length of the charge sharing period T_{sh}, which are determined by the screen size (corresponding to the size of the active matrix substrate), resolution and the like of the display device. Accordingly, in general, the number of the charge sharing TFTs 12 to be provided to each of the source lines SL_i may be determined appropriately according to such screen size or resolution and the charge sharing TFTs 12 may be disposed in the determined numbers at an approximately equal interval in the direction in which the source line SL_i extends. Then, the charge sharing control signal line may be disposed in numbers according to the number of TFTs 12 and these charge sharing control signal lines may be configured so as to turn on all the charge sharing TFTs 12 for the charge sharing period T_{sh}. With such a configuration, it is possible to transfer the charge charged in each of the source lines to the neighboring source line uniformly over the entire active matrix substrate in a short time within the charge sharing period T_{sh}. Thereby, it is possible to cause the potential in each of the source lines to reach the intermediate potential (source center potential) V_{Sdc} uniformly over the entire active matrix substrate in a short time. As a result, it is possible to suppress the deterioration of display quality caused by the difference in the charged amount or the shortage of charging in the pixel capacitance even when a larger size or higher resolution is employed in the display device and the drive frequency thereof is increased.

[0119] Note that, while the dot inversion drive method is employed in the first to fourth embodiments, the present invention is not limited to this drive method and can be applied to a liquid crystal display device employing another drive method as far as it is configured such that the polarity of the data signal is inverted every predetermined number of two or more of source lines. For example, for the active matrix type display device which has a configuration to invert the polarity of the data signal every two source lines, it is possible to suppress the deterioration of display quality caused by the difference in the charged amount or the shortage of charging in the pixel capacitance by applying the present invention, while reducing power consumption by employing the charge sharing method.

[0120] Further, in the first to fourth embodiments, the voltage follower is used as the output buffer 31 in the source driver 300 and a bias voltage is necessary for the operation of this voltage follower. However, the voltage follower as the output buffer 31 consumes power due to the internal current while the bias voltage is applied, even if the source line SL_i is not driven. Accordingly, it is preferable to stop the application of the bias voltage to each of the output buffers 31 so as to prevent the internal current from flowing in the charge sharing period T_{sh} when the electrical connection between each of the buffers 31 and the source line SL_i is cut off. Fig. 24 is a circuit diagram showing a configuration example of

the output part 304 in the source driver for this purpose.

[0121] Fig. 25 is a circuit diagram showing a configuration example of an output buffer 32 used in the configuration of Fig. 24. Note that the output buffer having the configuration of Fig. 25 can be used also in an output part having another configuration. As shown in Fig. 25, the output buffer 32 is configured with a first differential amplifier 321 having an N channel MOS transistor (hereinafter, abbreviated as "Nch transistor") Q1 to function as a constant current source, a second differential amplifier 322 having a P channel MOS transistor (hereinafter, abbreviated as "Pch transistor") Q2 to function as a constant current source, and a push-pull type output circuit 323 composed of a Pch transistor Q3 and an Nch transistor Q4, and the output buffer 32 has a non-inversion input terminal Tin, inversion input terminal TinR, output terminal Tout, a first bias terminal Tb1 connected to the gate terminal of the Nch transistor Q1, and a second bias terminal Tb2 connected to the gate terminal of the Pch transistor Q2. Further, the output terminal Tout is connected directly to the inversion input terminal TinR, and the output buffer 32 operates as a voltage follower when a predetermined first bias voltage Vba1 and a predetermined second bias voltage Vba2 are provided to the first bias terminal Tb1 and the second bias terminal Tb2, respectively. On the other hand, when the ground potential VSS is provided to the first bias terminal Tb1 and a power supply voltage VDD is provided to the second bias terminal Tb2, the Nch transistor Q1 and the Pch transistor Q2 become off-state, and the Pch transistor Q3 of the output circuit 323 is provided with a voltage approximately equal to the power supply voltage VDD and the Nch transistor Q4 is provided with a voltage approximately equal to the ground potential VSS. Thereby, the Pch transistor Q3 and the Nch transistor Q4 also become off-state in the output circuit 323. This means that the output buffer 32 goes into a halt state, and in this halt state, current does not flow within the output buffer 32 and the output thereof goes into a high impedance state.

[0122] In the configuration example of Fig. 24, differently from the above embodiments, the first MOS transistor SWa and the inverter 33 are removed and the output terminal Tout of each of the output buffers 32 is connected directly to the output terminal of the source driver 300. Meanwhile, this configuration is provided with first and second switches 37 and 38, a first bias line Lb1 for connecting the first bias terminal Tb1 in each of the output buffers 32 to the first switch 37, and a second bias line Lb2 for connecting the second bias terminal Tb2 in each of the output buffers 32 to the second switch 38. Note that the internal data signal d(i) is provided to the non-inversion input terminal Tin as an input terminal of each of the output buffers 32. The first switch 37 is a switch for switching a voltage to be provided to the first bias line Lb1 according to the charge sharing control signal Csh. The first switch 37 provides the first bias voltage Vba1 to the first bias line Lb1 when the charge sharing control signal Csh exhibits the L level, and provides the ground potential VSS to the first bias line Lb1 when the charge sharing control signal Csh exhibits the H level. The second switch 38 is a switch for switching a voltage to be provided to the second bias line Lb2 according to the charge sharing control signal Csh. The second switch 38 provides the second bias voltage Vba2 to the second bias line Lb2 when the charge sharing control signal Csh exhibits the L level, and provides the power supply voltage VDD to the second bias line Lb2 when the charge sharing control signal Csh exhibits the H level. Thereby, each of the output buffers 32 operates as a voltage follower when the charge sharing control signal Csh exhibits the L level and goes into the halt state when the charge sharing control signal Csh exhibits the H level. In this manner, the first and the second switches 37 and 38 function as a halt control part for each of the output buffers 32. Other constituents of the output part in the source driver shown in Fig. 24 are the same as those of the output part 304 in the source driver shown in Fig. 14, and the same part is denoted by the same reference symbol and description thereof will be omitted. Note that a configuration for generating the first and the second bias voltage Vba1 and Vba2 is the same as that in conventional cases and description thereof will be omitted.

[0123] According to the above described configuration, during the period except for the charge sharing period Tsh, the charge sharing control signal Csh exhibits the L level and each of the internal data signal d(i) is applied to the source line SLi (i = 1 to N) as the data signal S(i) via the output buffer 32. On the other hand, during the charge sharing period Tsh, the charge sharing control signal Csh exhibit the H level and the output buffer 32 is in the halt state and the output thereof is in the high impedance state, and to each of the source lines SLi, a fixed voltage Esh (corresponding to the DC level VSdc of the data signal S(i)) is provided via the second MOS transistor SWc. In this manner, it is possible to reduce power consumption in the source driver 300 by halting each of the output buffers during the charge sharing period Tsh, while realizing the same function as that in the above embodiments.

[0124] Note that the configuration of the output buffer 32 is not limited to that of Fig. 25 and may be any configuration in which the internal current can be reduced or cut off to be halted by switching of the bias voltage. Further, in a configuration in which the output of the output buffer 32 does not have the high impedance state in the halt state, the first MOS transistor SWa may be inserted between each of the output buffers 32 and the output terminal of the source driver, as in the configuration shown in Fig. 14. Further, in the configuration shown in Fig. 24, the second MOS transistor SWc inserted between each of the source lines SLi (i = 1 to N) and the charge sharing voltage fixing power supply 35 as well as the charge sharing voltage fixing power supply 35 may be omitted. Note that, as described above, the configuration shown in Fig. 24 is preferable from the stand point of suppressing the horizontal irregularity to occur in the display.

<6. Application to a television receiver>

[0125] Next, an example will be described for application of the active matrix substrate according to the present invention to a television receiver. Fig. 26 is a block diagram showing a configuration of a display device 800 for the television receiver. The display device 800 is provided with a Y/C separation circuit 80, a video-chroma circuit 81, an A/D converter 82, a liquid crystal controller 83, a liquid crystal panel 84, a backlight drive circuit 85, a backlight 86, a microcomputer 87, and a gradation circuit 88.

[0126] The liquid crystal panel 84 includes a display part using the active matrix substrate according to the present invention, and a source driver, a gate driver, and a charge sharing control circuit for driving the display part, and a specific configuration thereof may be any one described in each of the embodiments or each of the variations of the present invention (refer to Fig. 4, Fig. 5, Fig. 15, and Figs. 20 to 23).

[0127] In the display device 800 with the above configuration, first a composite color video signal Scv is inputted from outside into the Y/C separation circuit 80 as a television signal and separated there into a luminance signal and color signals. These luminance signal and color signals are converted into analog RGB signals corresponding to the light's three primary colors in the video-chroma circuit 81, and further these analog RGB signals are converted into digital RGB signals in the A/D converter 82. These digital RGB signals are inputted into the liquid crystal controller 83. Further, in the Y/C separation circuit 80, horizontal and vertical synchronization signals are extracted from the composite color video signal Scv inputted from outside and these synchronization signals are also inputted into the liquid crystal controller 83 via the microcomputer 87.

[0128] To the liquid crystal panel 84, the digital RGB signals are inputted from the liquid crystal controller 83 together with timing signals based on the above synchronization signals at a predetermined timing. Further, in the gradation circuit 88, gradation voltages of each of the three primary colors R, G, and B for color display are generated and the gradation voltages are supplied also to the liquid crystal panel 84. In the liquid crystal panel 84, drive signals (data signal, scanning signal, charge sharing control signal, etc.) are generated by an internal source driver, gate driver, etc. based on these RGB signals, timing signal and gradation voltage, and a color image is displayed on an internal display part (using the active matrix substrate) based on these drive signals. Note that, for displaying the image on the liquid crystal panel 84, it is necessary to illuminate the liquid crystal panel 84 with light from the back, and in the display device 800, the backlight 86 is driven by the backlight drive circuit 85 under the control of the microcomputer 87 and thereby illuminates the back surface of the liquid crystal panel 84 with light.

[0129] Control of the entire system including the above processing is performed by the microcomputer 87. Note that, for the video signal (composite color video signal) inputted from outside, not only a video signal from television broadcasting but also a video signal obtained by shooting with a camera, a video signal supplied via the internet line, or the like can be used, and image display of the various video signals is possible in the display device 800.

[0130] When an image of the television broadcasting is displayed on the display device 800 with the above configuration, a tuner part 90 is connected to the display device 800 as shown in Fig. 27. The tuner part 90 extracts a channel signal to be received from receiving waves (high frequency wave signal) received by an antenna (not shown in the drawing), converts the channel signal into an intermediate frequency signal, and takes out the composite color video signal Scv as a television signal by subjecting the intermediate frequency signal to detection. The composite color video signal Scv is inputted into the display device 800 as described above and an image according to the composite color video signal Scv is displayed on the display device 800.

[0131] Fig. 28 is a perspective exploded view showing an example of a mechanical configuration when the display device with the above configuration is applied to the television receiver. In the example shown in Fig. 28, the television receiver includes a first chassis 801 and a second chassis 806 in addition to the above display device 800 as constituents thereof, and is configured such that the first chassis 801 and the second chassis 806 sandwich the display device 800 so as to wrap the same. The first chassis 801 has an opening 801a formed for transmitting an image displayed on the display device 800. Further, the second chassis 806 is one to cover the back side of the display device 800 and provided with an operation circuit 805 for operating the display device 800 and also a supporting member 808 attached on the lower side.

[0132] In the television receiver as described above, a number of charge sharing TFTs 12 are provided for each of the source lines SLi on the active matrix substrate within the liquid crystal panel 84, and thereby it is possible to display a good image by suppressing the difference in the charged amount or the shortage of charging in the pixel capacitance even when a larger size or a higher resolution is employed in the display device and the drive frequency thereof is increased.

Industrial Applicability

[0133] The present invention is applied to an active matrix substrate or a display device having the same, and particularly suitable for an active matrix type liquid crystal display device and an active matrix substrate used therefor.

Claims

1. An active matrix substrate, comprising:

5 a plurality of data signal lines;
 a plurality of scanning signal lines intersecting the plurality of data signal lines;
 a pixel switching element provided corresponding to each of intersections of the plurality of data signal lines
 and the plurality of scanning signal lines, the pixel switching element being turned on and off by the scanning
 10 signal line passing through the corresponding intersection;
 a pixel electrode connected to the data signal line passing through the intersection corresponding to the pixel
 switching element via the pixel switching element;
 charge sharing switching elements connected to the plurality of data signal lines so as to cause a short-circuit
 in its on-state between each of the plurality of data signal lines and another data signal line neighboring thereto,
 15 predetermined number of two or more of the charge sharing switching elements being provided for each of the
 plurality of data signal lines in a direction in which the data signal line extends; and
 charge sharing control signal lines for turning on and off the charge sharing switching elements.

2. The active matrix substrate according to Claim 1, wherein
 20 each of the plurality of data signal lines includes first and second signal lines electrically separated from each other;
 and
 predetermined number of two or more of the charge sharing switching elements are provided for each of the first
 and second signal lines in the direction in which the data signal line extends.

3. The active matrix substrate according to Claim 1, wherein
 25 the charge sharing switching elements are disposed at a substantially equal interval in the direction in which the
 data signal line extends.

4. The active matrix substrate according to Claim 1, wherein
 30 the charge sharing control signal lines include a plurality of control signal lines disposed along the plurality of scanning
 signal lines, respectively;
 the charge sharing switching elements include a plurality of switching elements provided corresponding to the
 plurality of control signal lines for each of the plurality of data signal lines; and
 each of the plurality of switching elements is turned on and off by the corresponding control signal line.

5. The active matrix substrate according to Claim 1, wherein
 35 the charge sharing switching elements include a group of switching elements disposed in a neighborhood of one
 end of the plurality of data signal lines and a group of switching elements disposed in a neighborhood of the other
 end of the plurality of data signal lines.

6. The active matrix substrate according to Claim 1, wherein
 40 the charge sharing control signal lines include a non-display-area control signal line disposed so as to intersect the
 plurality of data signal lines in a non-display area; and
 the charge sharing switching elements include a group of switching elements disposed in the non-display area and
 turned on and off by the non-display-area control signal line.

7. The active matrix substrate according to Claim 1, wherein
 45 the pixel electrode is disposed so as to overlap with the charge sharing control signal line.

8. The active matrix substrate according to Claim 1, wherein
 50 an electrode portion connecting the charge sharing switching element to the data signal line is disposed so as not
 to overlap with the charge sharing control signal line.

9. The active matrix substrate according to Claim 1, wherein
 55 lengths of interconnections for connecting the charge sharing switching element and the two neighboring data signal
 lines short-circuited by the charge sharing switching element in the on-state are the same with each other.

10. A display device, comprising:

an active matrix substrate according to any one of Claims 1 to 9;
a scanning signal line drive circuit for generating a plurality of scanning signals for selectively driving the plurality of scanning signal lines and applying the plurality of scanning signals to the plurality of scanning signal lines, respectively;

5 a data signal line drive circuit for generating a plurality of data signals, which represent an image to be displayed, as voltage signals which invert polarities every predetermined number of the data signal lines and also invert the polarities every predetermined number of horizontal periods and applying the plurality of data signals to the plurality of data signal lines, respectively; and

10 a charge sharing control signal generation circuit for generating a charge sharing control signal to be applied to the charge sharing control signal lines so as to cause a short-circuit between each of the plurality of data signal lines and another data signal line neighboring thereto for a predetermined charge sharing period of every one horizontal period.

11. The display device according to Claim 10, wherein
15 the data signal line drive circuit generates the plurality of data signals so as to invert the voltage polarities every predetermined number of two or more of horizontal periods.

12. The display device according to Claim 10, wherein
20 the data signal line drive circuit includes a switch circuit for cutting off the application of the plurality of data signals to the plurality of data signal lines and also short-circuiting the plurality of data signal lines with each other, for the charge sharing period of every one horizontal period.

13. The display device according to Claim 10, wherein
25 the data signal line drive circuit applies a fixed voltage to the plurality of data signal lines when the plurality of data signal lines are short-circuited with each other by the switch circuit.

14. The display device according to Claim 13, wherein
a value of the fixed voltage is a middle value between a maximum value and a minimum value of the data signal.

30 15. The display device according to Claim 10, wherein
DC levels of the plurality of data signals correspond to a black display, and
the scanning signal line drive circuit selectively drives the plurality of scanning signal lines such that each of the plurality of scanning signal lines is in a selected state for an effective scanning period other than the charge sharing period at least once in each frame period and the scanning signal line, which was in the selected state for the effective scanning period, is in the selected state for the charge sharing period, at least once after a predetermined
35 pixel value holding time has elapsed from a time when the selected state changed to an unselected state and before the scanning signal goes to the selected state during the effective scanning period in the next frame period.

16. The display device according to Claim 15, wherein
40 the scanning signal line drive circuit causes the scanning signal line, which was in the selected state for the effective scanning period, to be in the selected state for the charge sharing period a plurality of times after the pixel value holding time has elapsed from the time when the selected state changed to the unselected state and before the scanning signal line goes to the selected state during the effective scanning period in the next frame period.

45 17. The display device according to Claim 16, wherein
a period during which each of the plurality of scanning signal lines is in the selected state for the effective scanning period does not overlap with a period during which any of the plurality of scanning signal lines is in the selected state for the charge sharing period.

50 18. The display device according to Claim 10, wherein
the data signal line drive circuit includes
a plurality of buffers for outputting the plurality of data signals to be applied to the plurality of data signal lines, respectively; and
a halt control part for halting the plurality of buffers for the charge sharing period.

55 19. A television receiver, comprising
a display device according to Claim 10.

20. A drive method of an active matrix substrate including a plurality of data signal lines, a plurality of scanning signal lines intersecting the plurality of data signal lines, a pixel switching element provided corresponding to each of intersections of the plurality of data signal lines and the plurality of scanning signal lines, the pixel switching element being switched on and off by the scanning signal line passing through the corresponding intersection, and a pixel electrode connected to the data signal line passing through the intersection corresponding to the pixel switching element via the pixel switching element, the drive method comprising:

a scanning signal line drive step of generating a plurality of scanning signals for selectively driving the plurality of scanning signal lines and applying the plurality of scanning signals to the plurality of scanning signal lines, respectively;

a data signal line drive step of generating a plurality of data signals, which represent an image to be displayed, as voltage signals which invert polarities every predetermined number of data signal lines and also invert the polarities every predetermined number of horizontal periods and applying the plurality of data signals to the plurality of data signal lines, respectively; and

a charge sharing step of short-circuiting each of the plurality of data signal lines with another data signal line neighboring thereto every one horizontal period, wherein:

the active matrix substrate further includes:

charge sharing switching elements connected to the plurality of data signal lines so as to cause a short-circuit in its on-state between each of the plurality of data signal lines and another data signal line neighboring thereto, predetermined number of two or more of the charge sharing switching elements being provided for each of the plurality of data signal lines in a direction in which the data signal line extends; and

charge sharing control signal lines for turning on and off the charge sharing switching elements, and wherein in the charge sharing step, each of the plurality of data signal lines is short-circuited with another data signal line neighboring thereto by a signal provided to the charge sharing control signal lines for turning on the charge sharing switching elements for a predetermined period of every one horizontal period.

Fig. 1

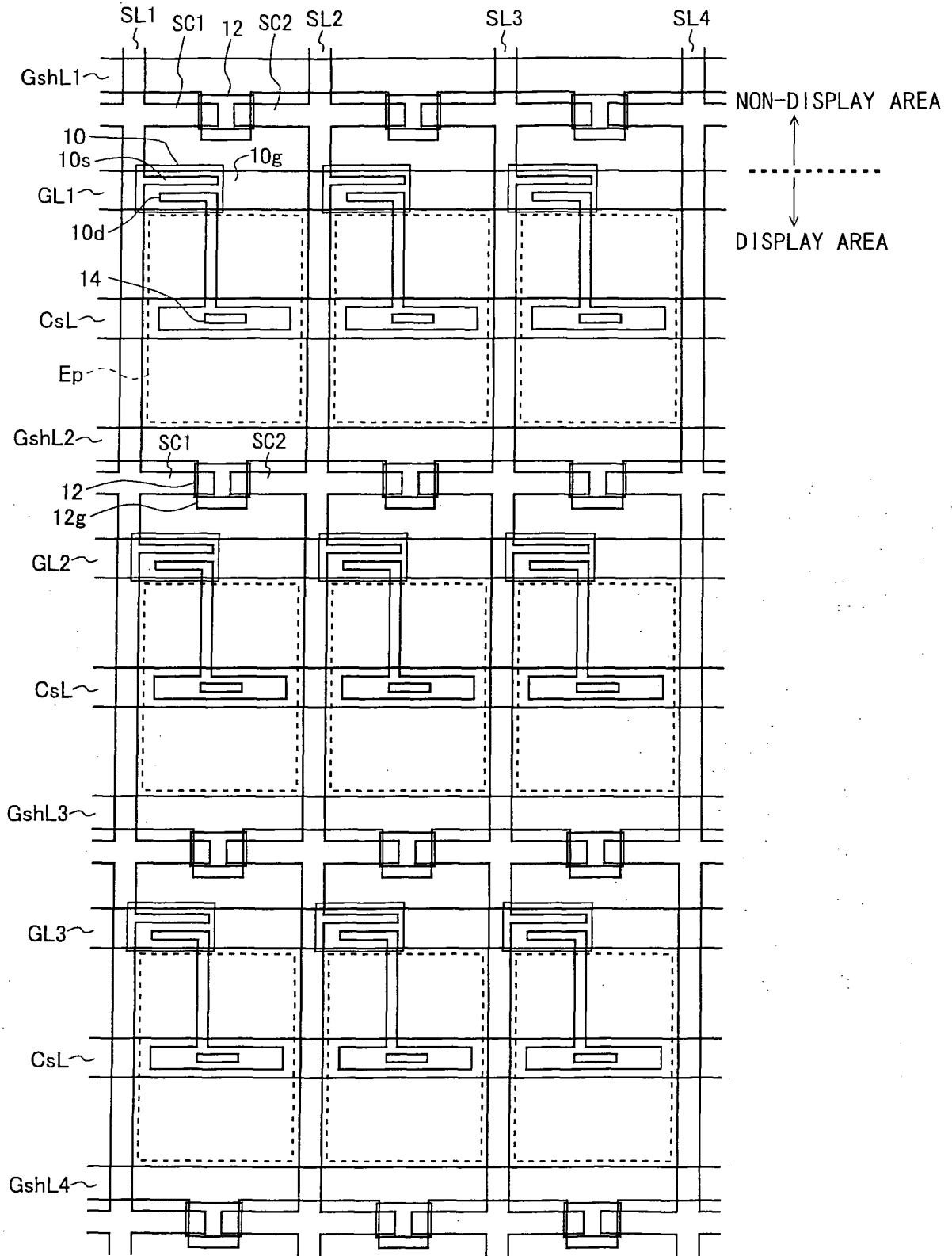


Fig.2

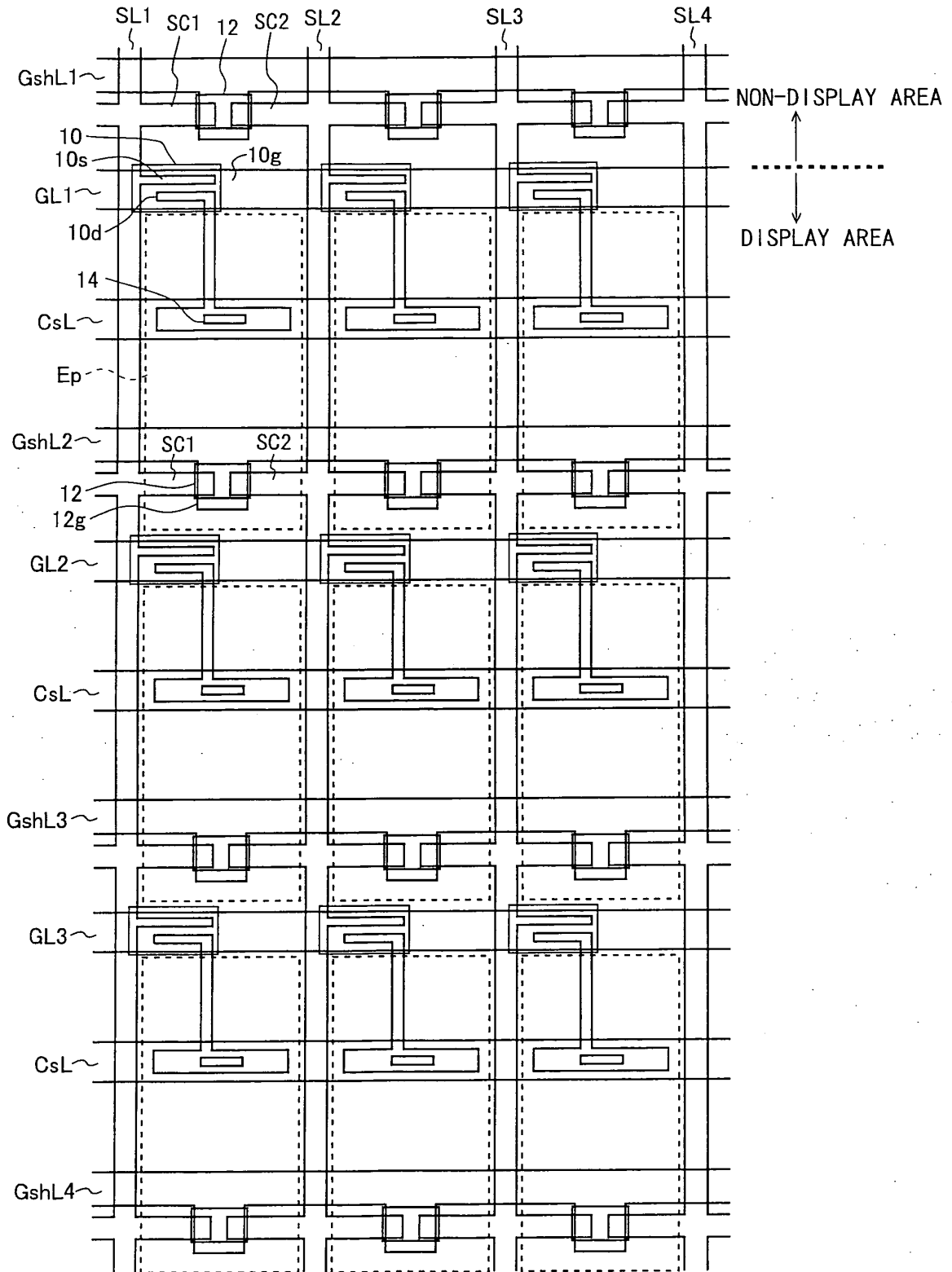


Fig.3

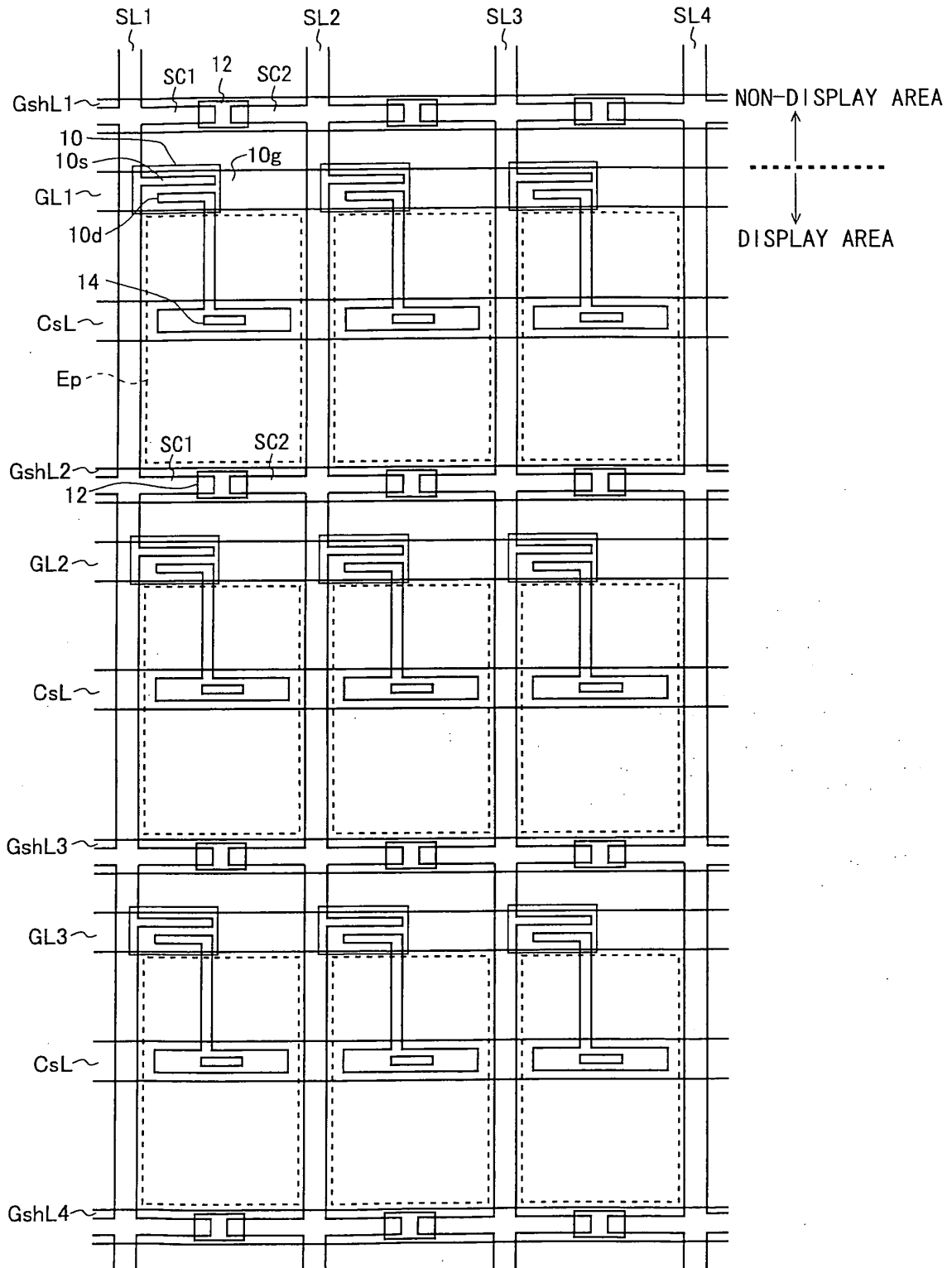


Fig. 4

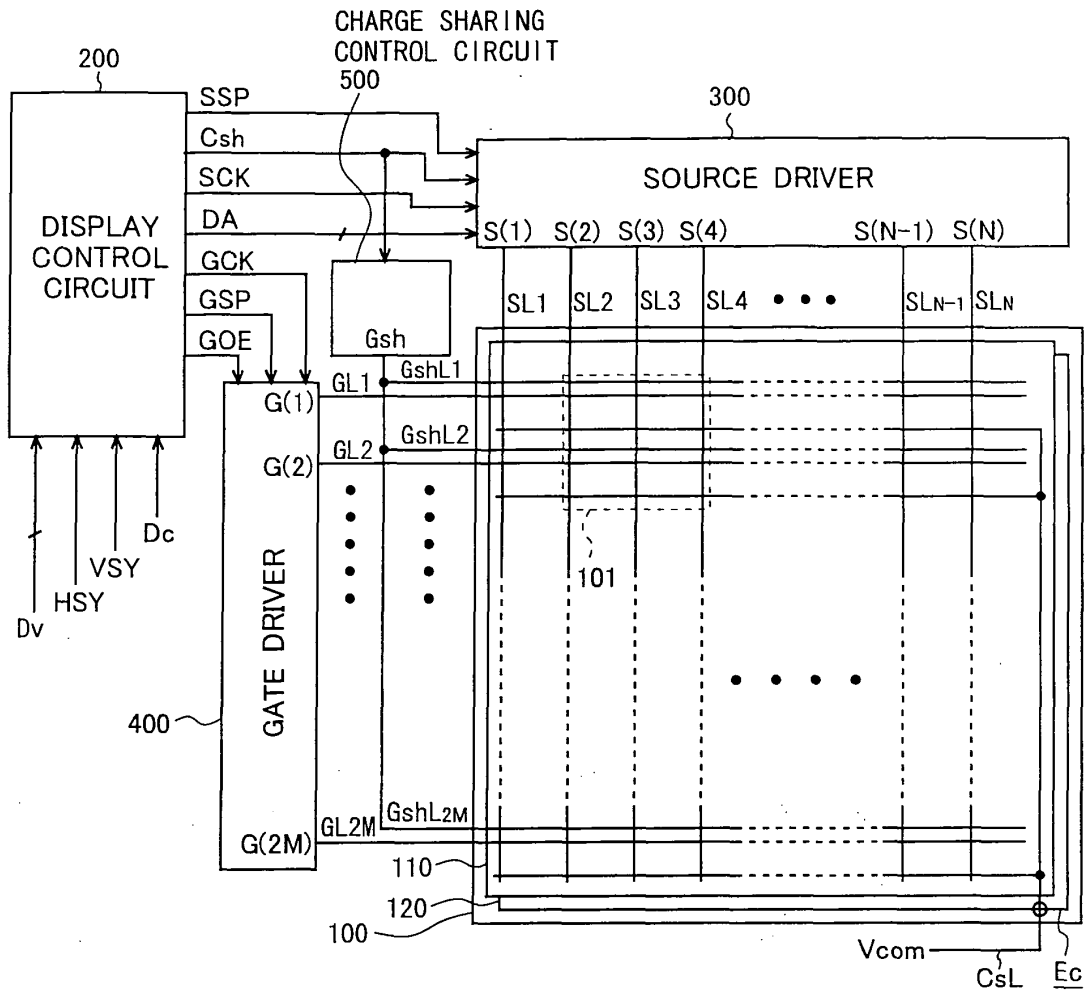


Fig. 5

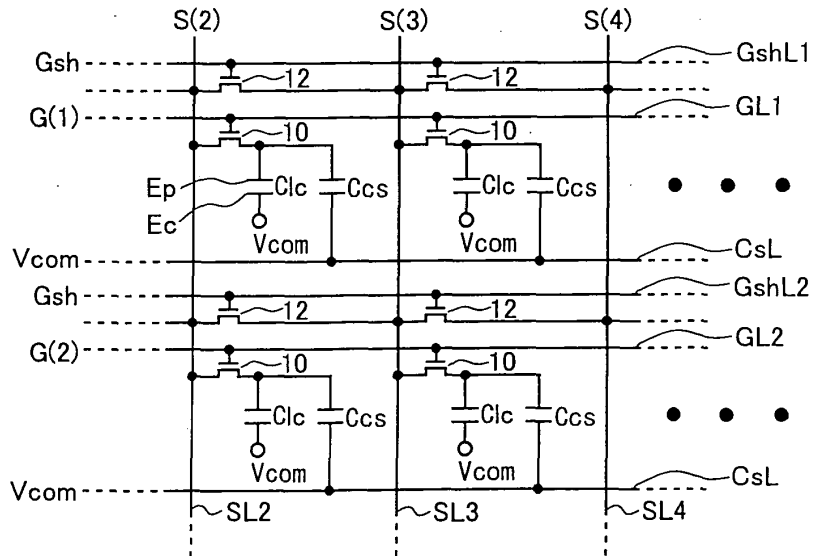


Fig. 6

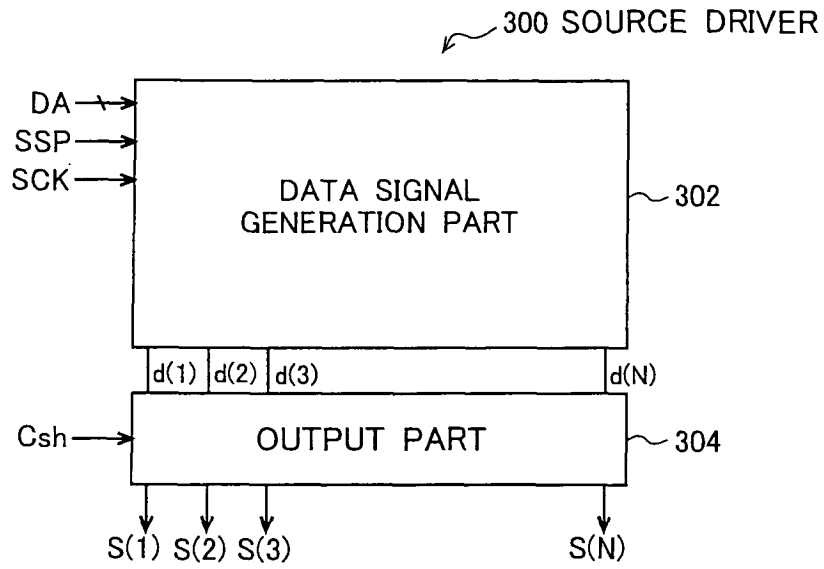


Fig. 7

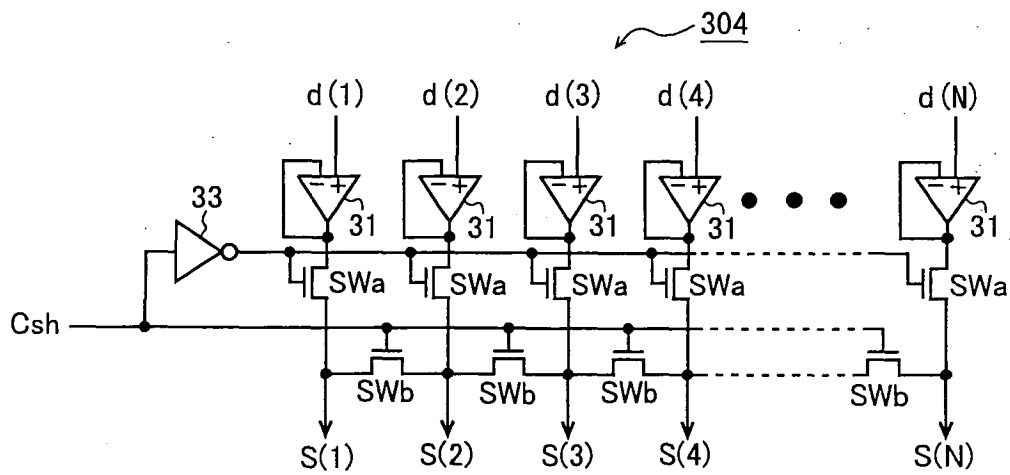


Fig.8

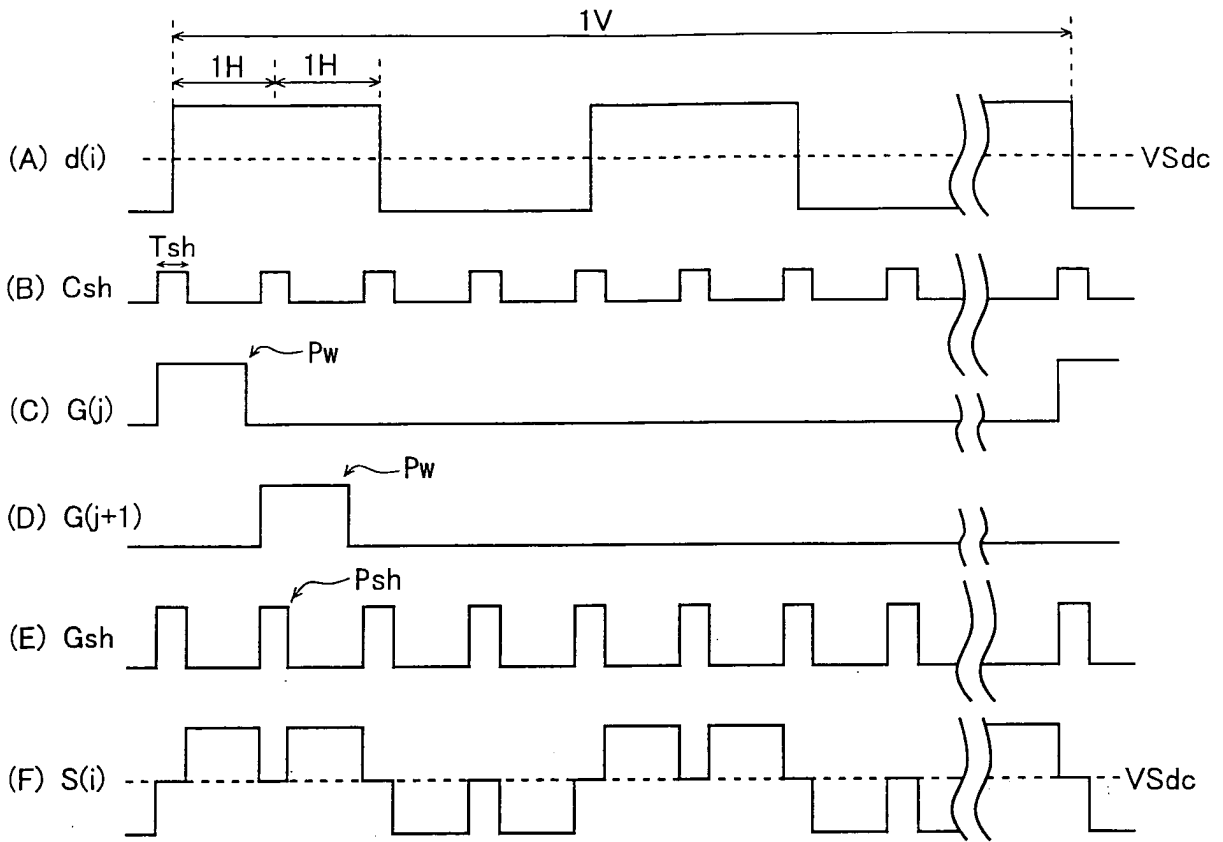


Fig. 9

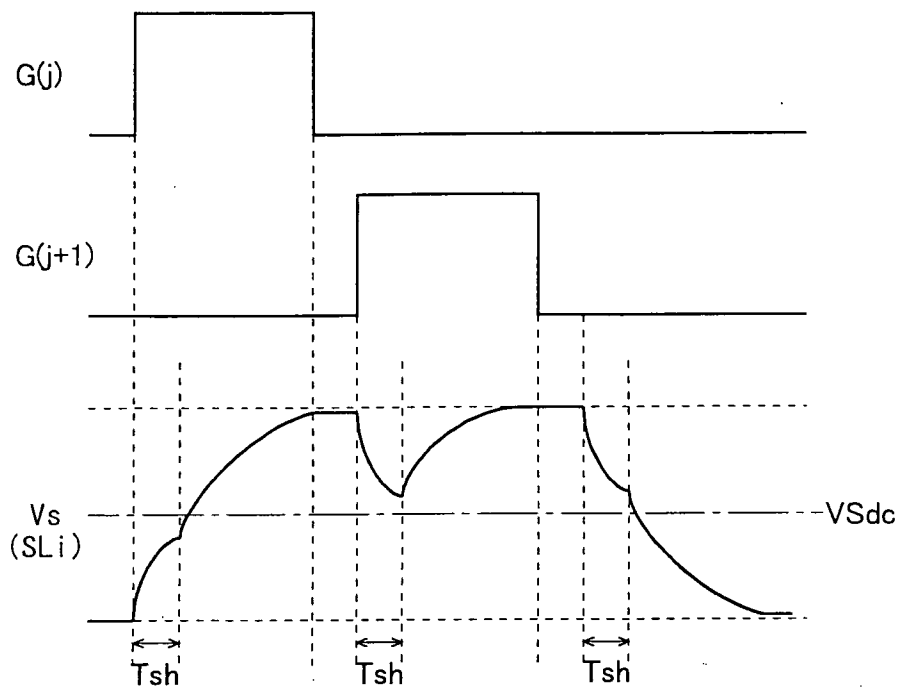


Fig. 10

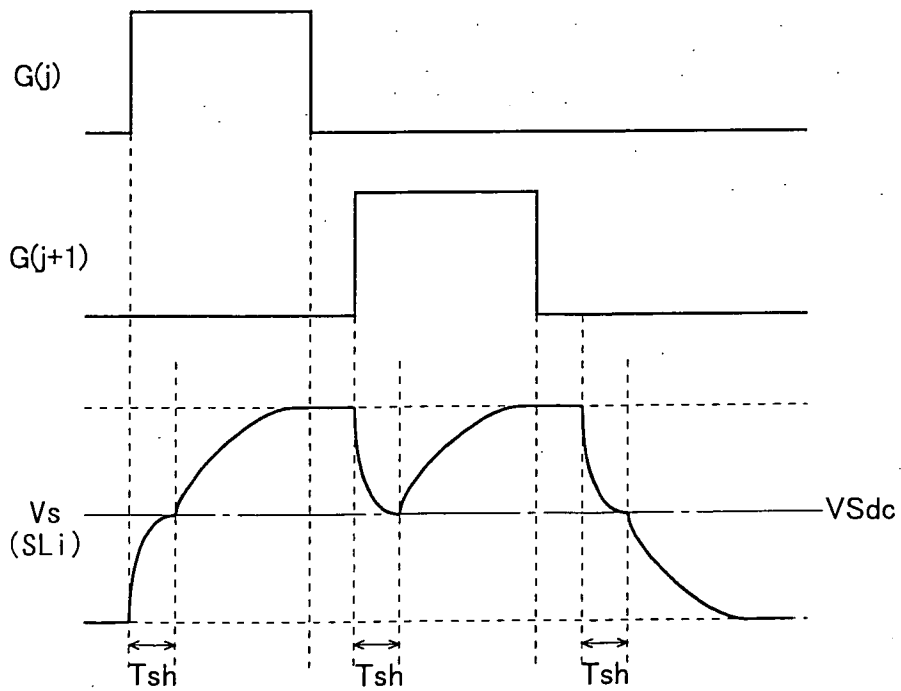


Fig. 11

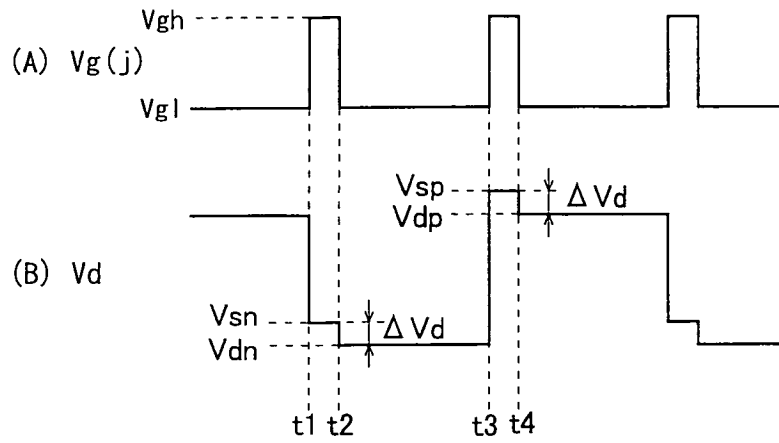


Fig. 12

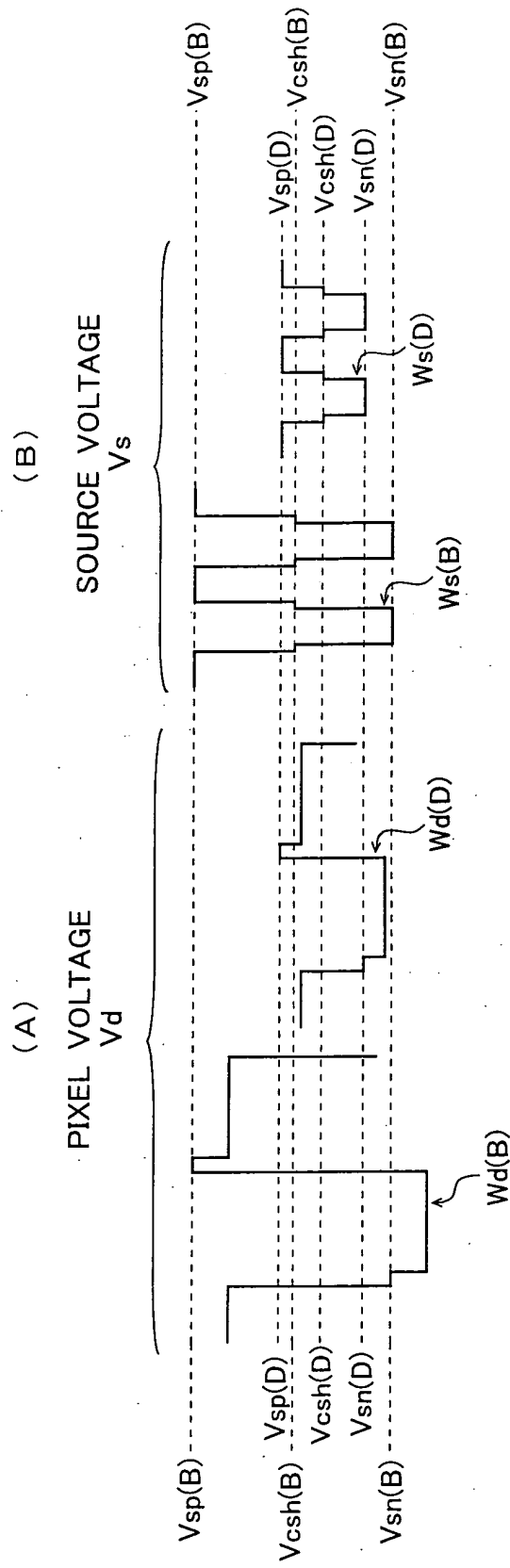


Fig. 13

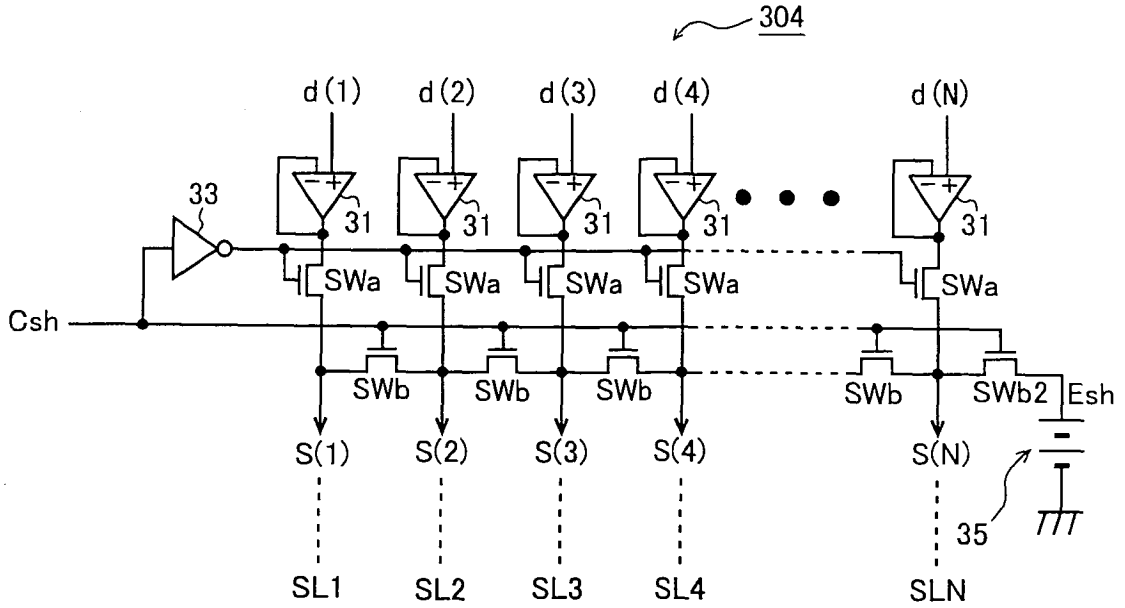


Fig. 14

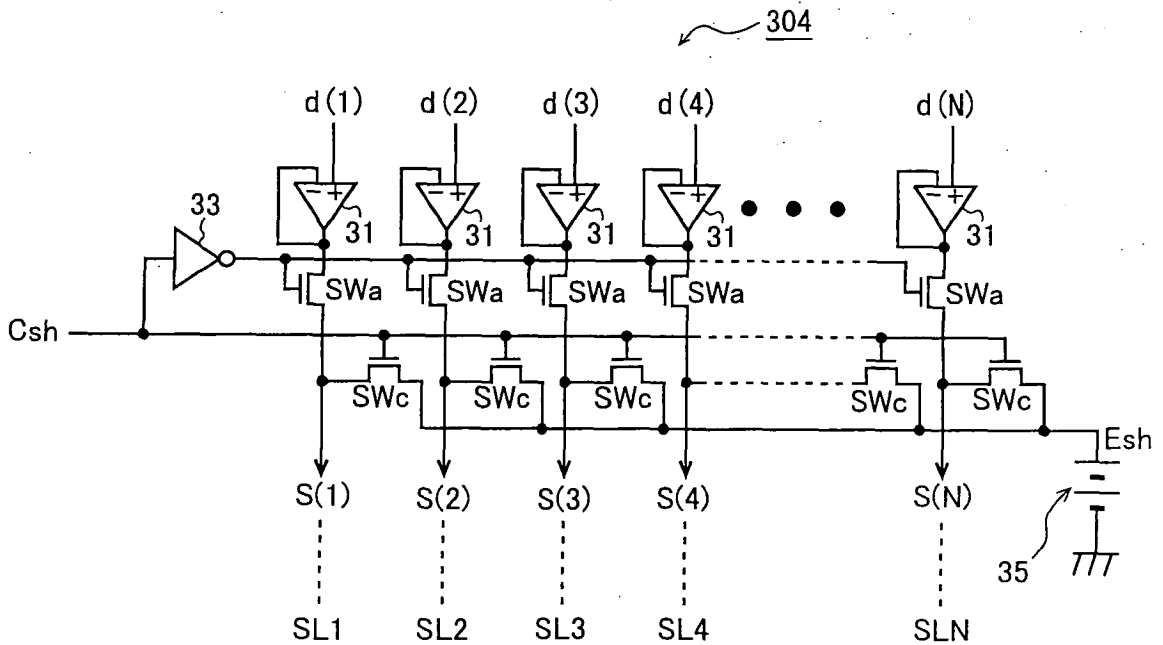


Fig. 15

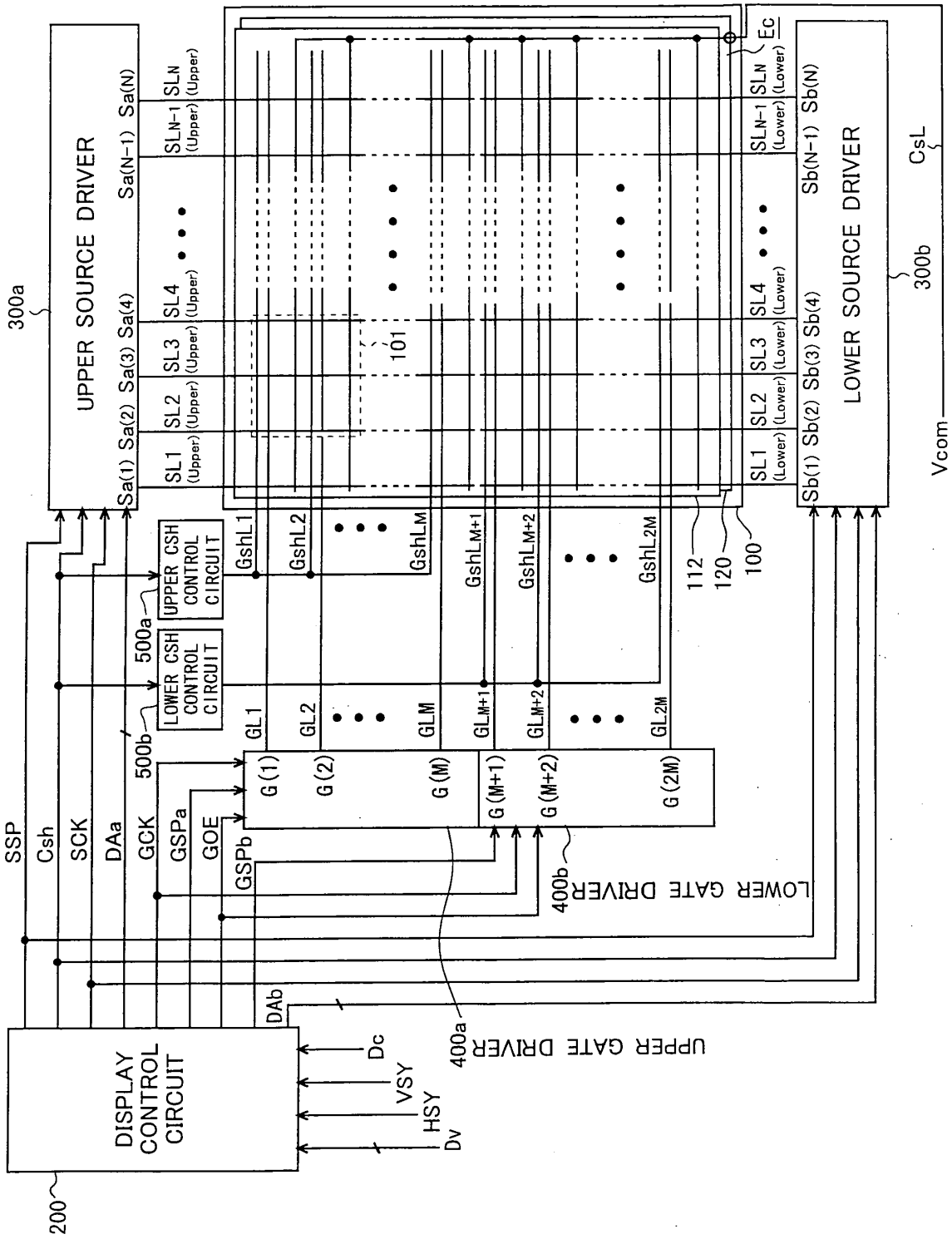


Fig. 16

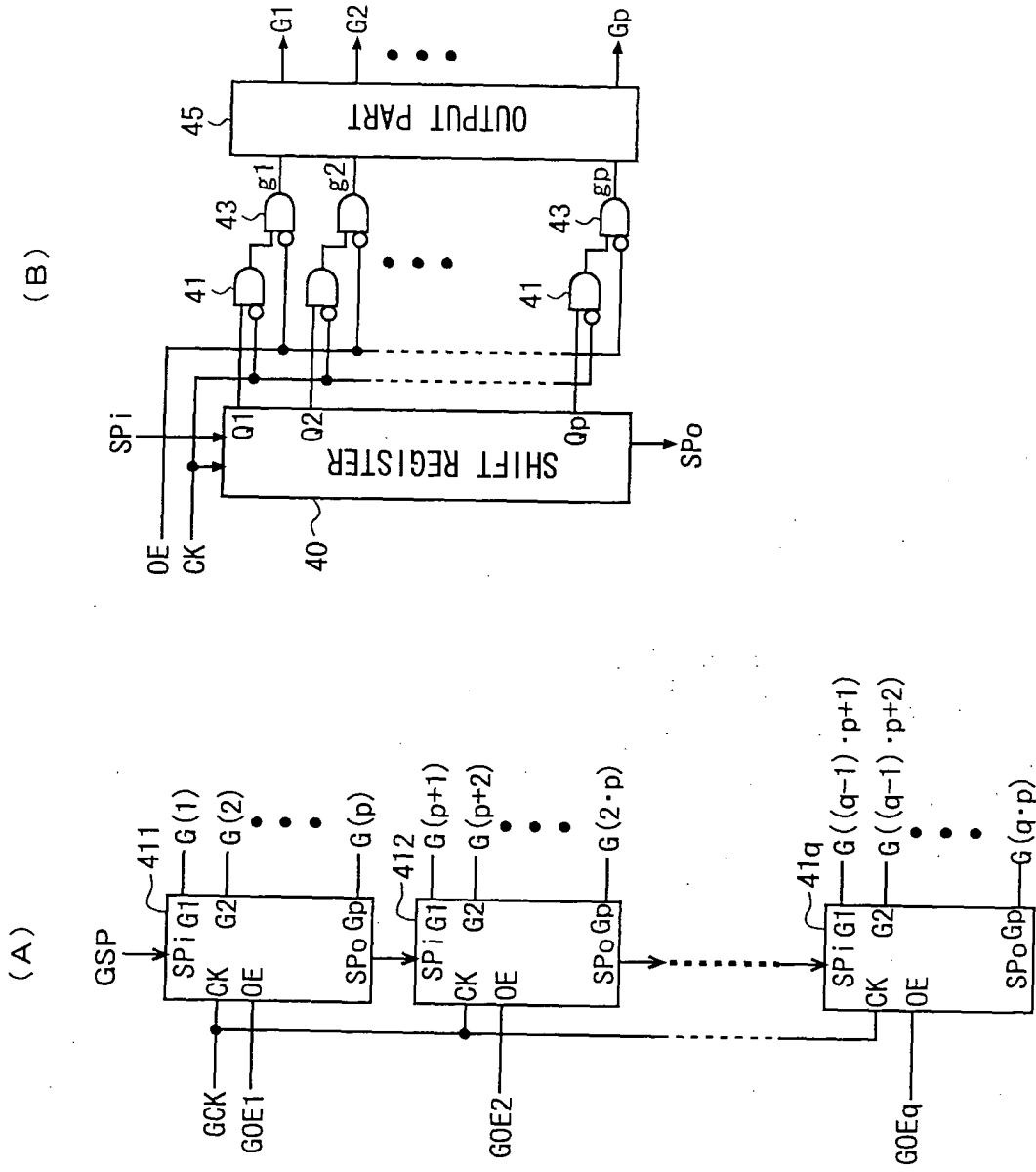


Fig. 17

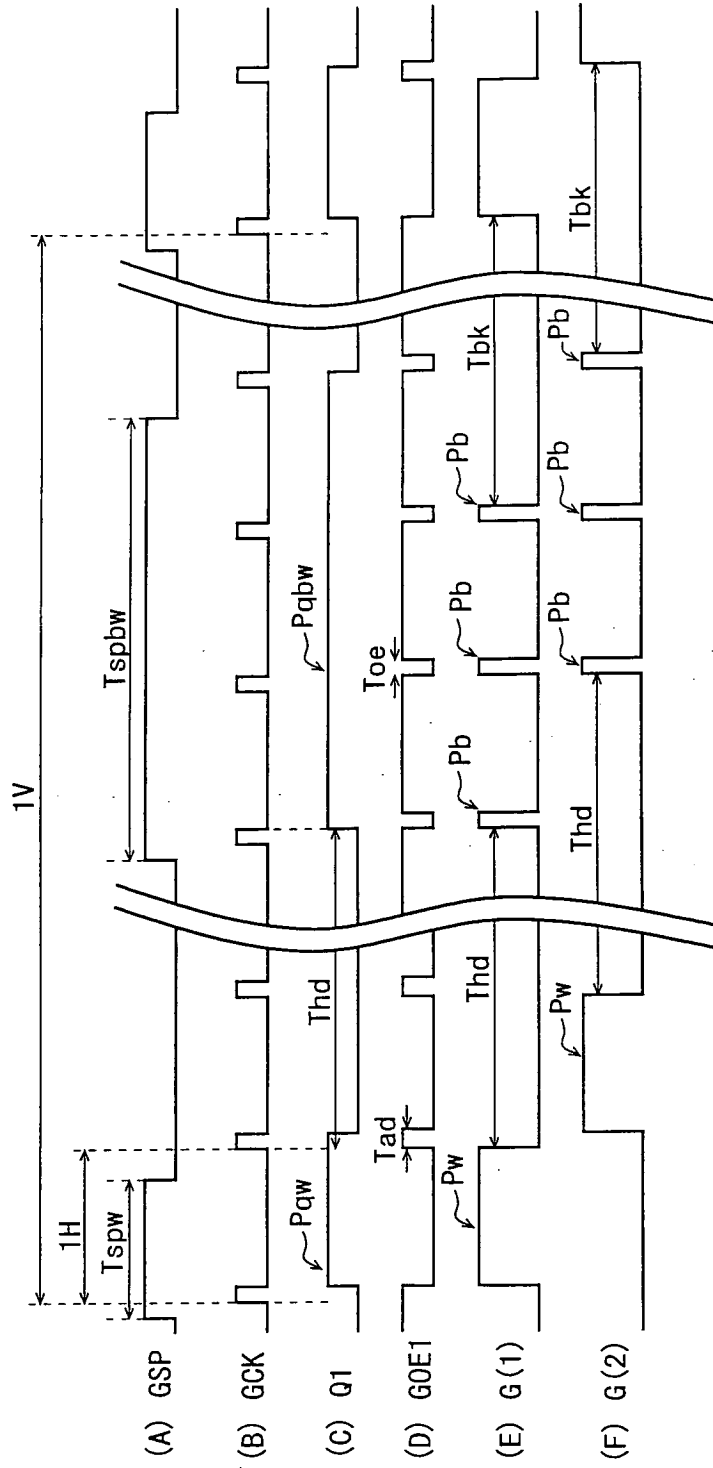


Fig. 18

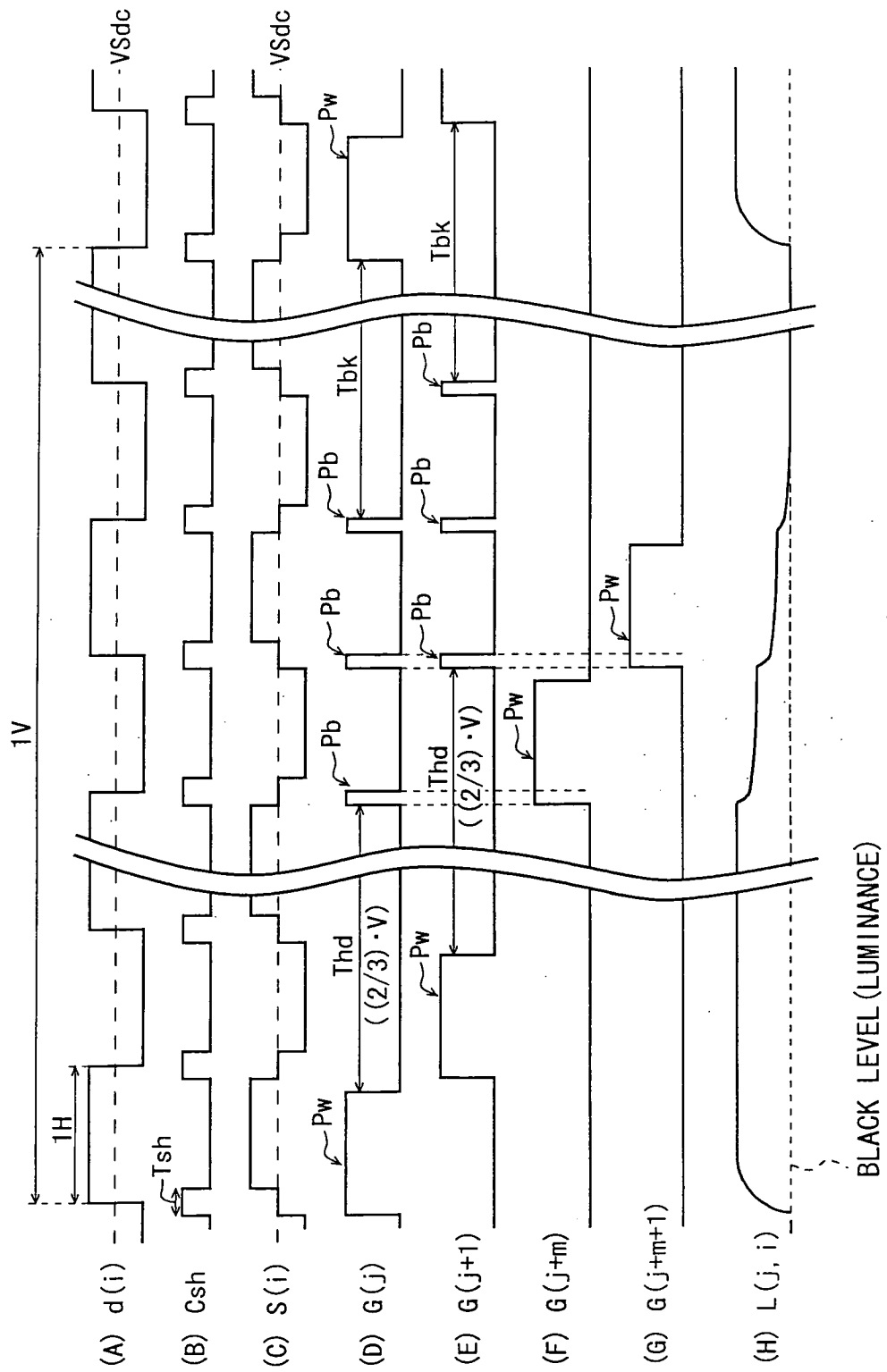


Fig. 19

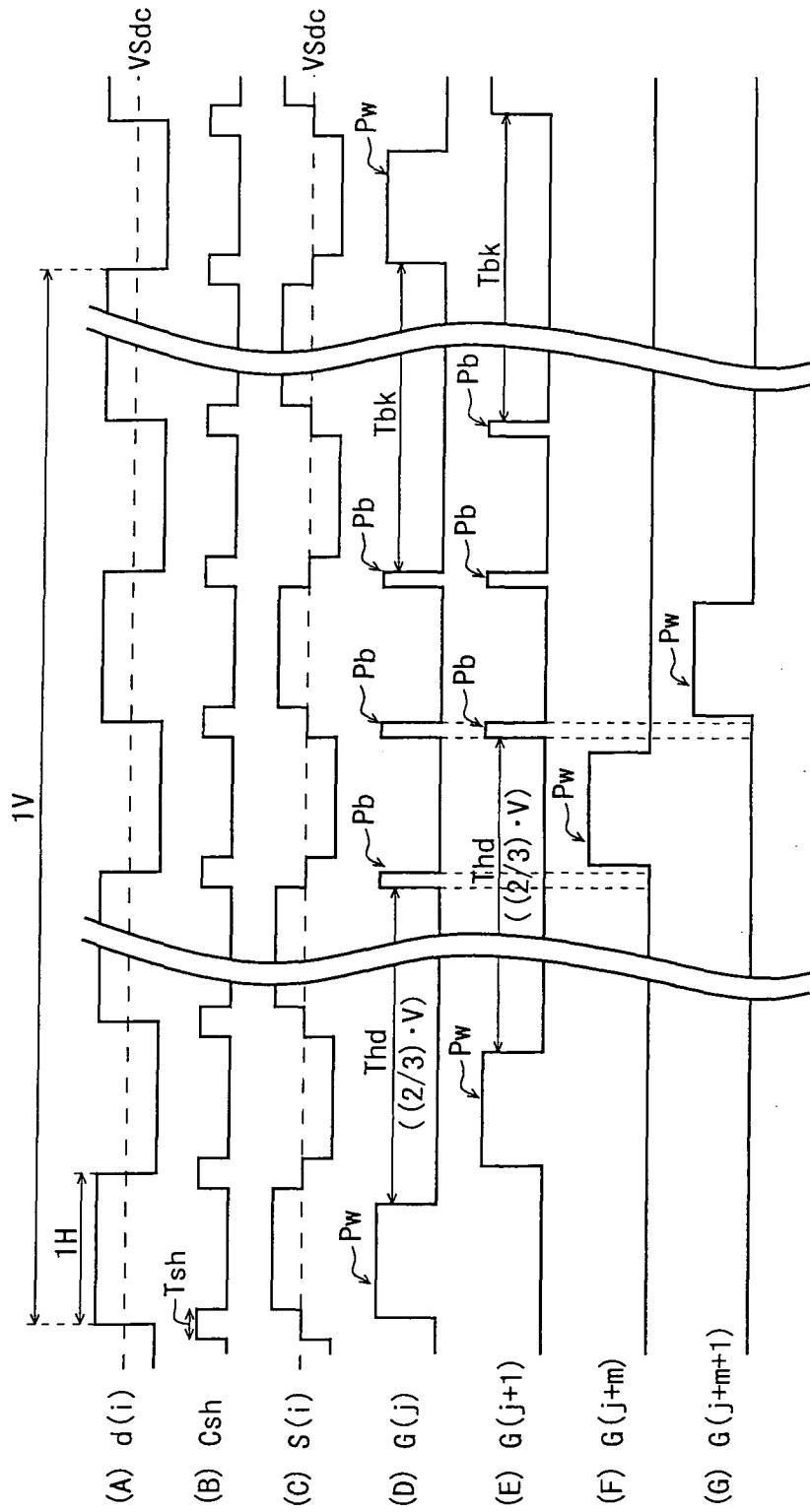


Fig.20

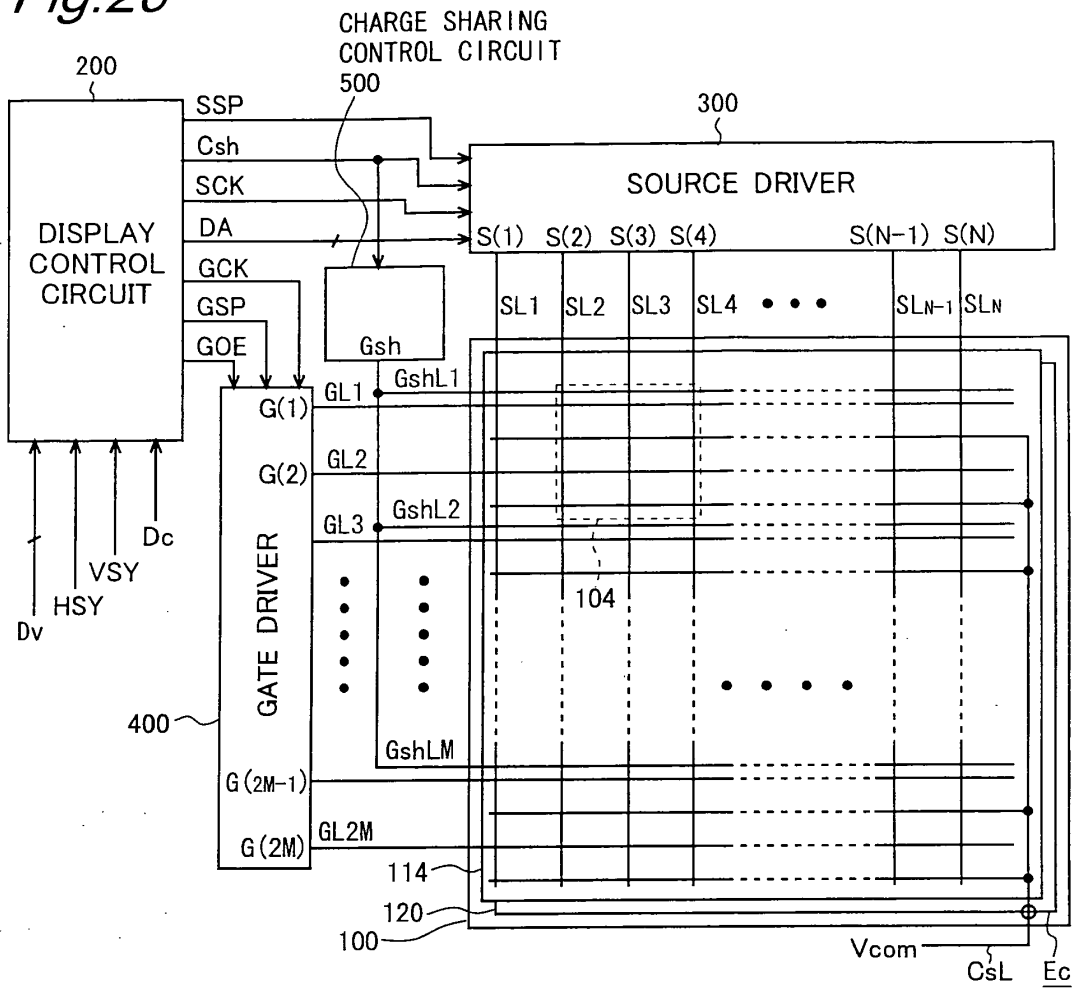


Fig.21

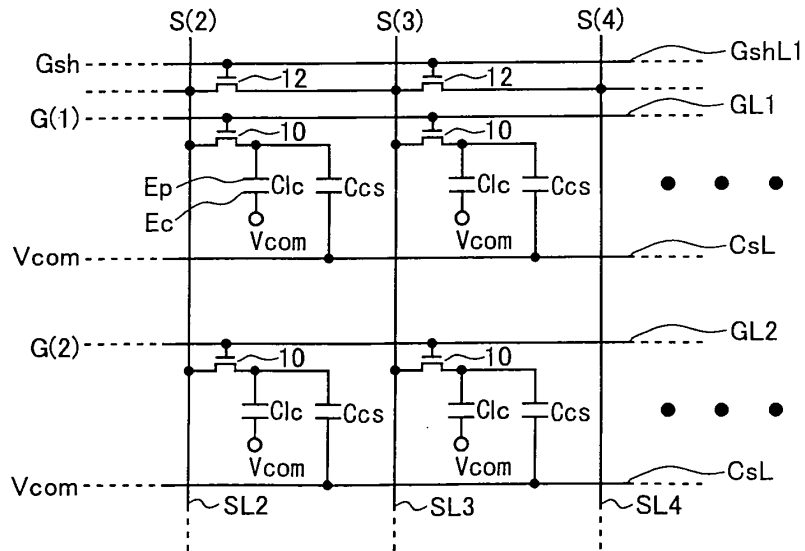


Fig.22

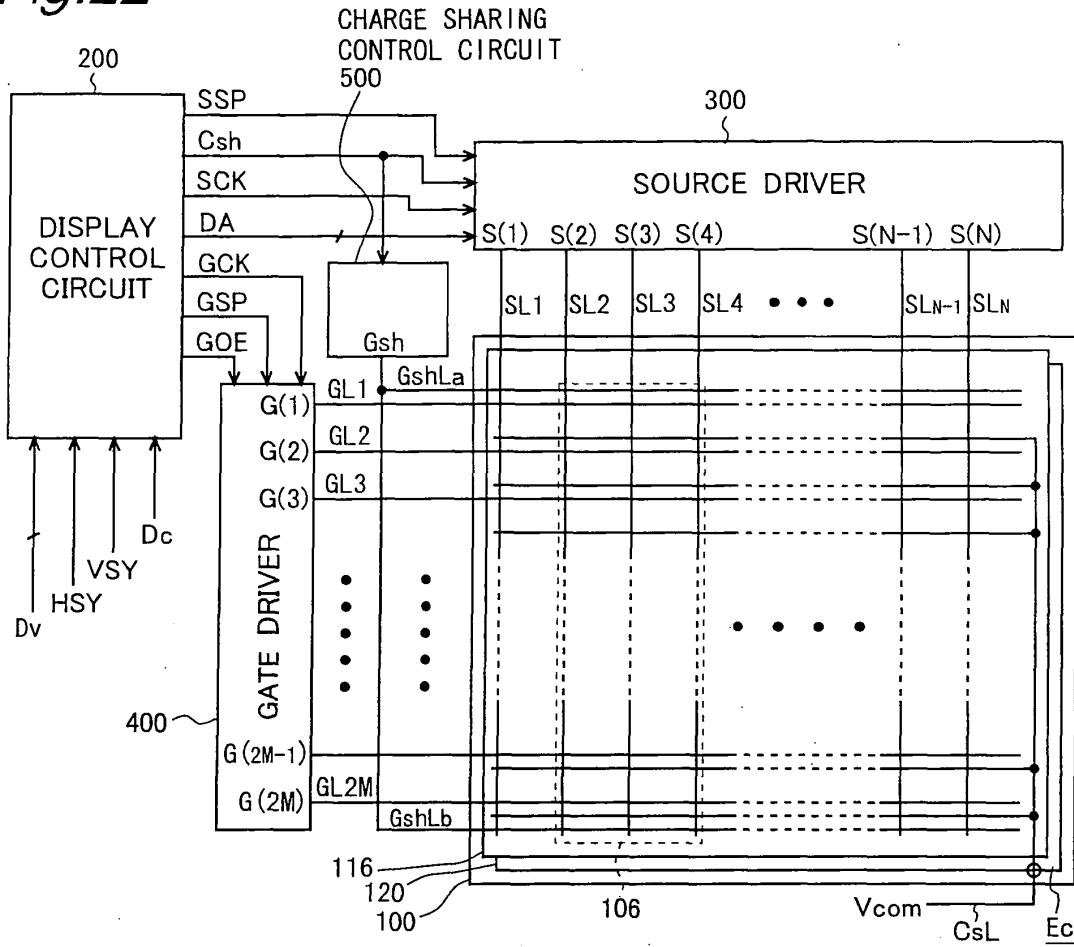


Fig.23

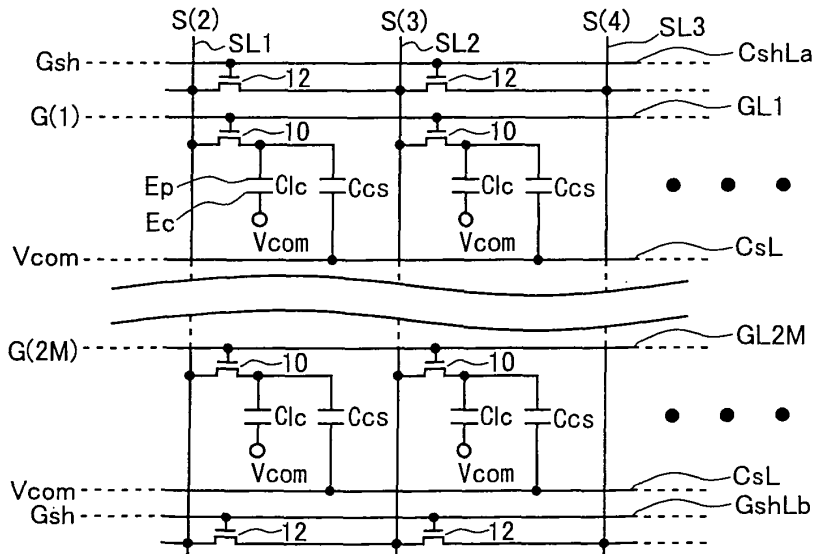


Fig.26

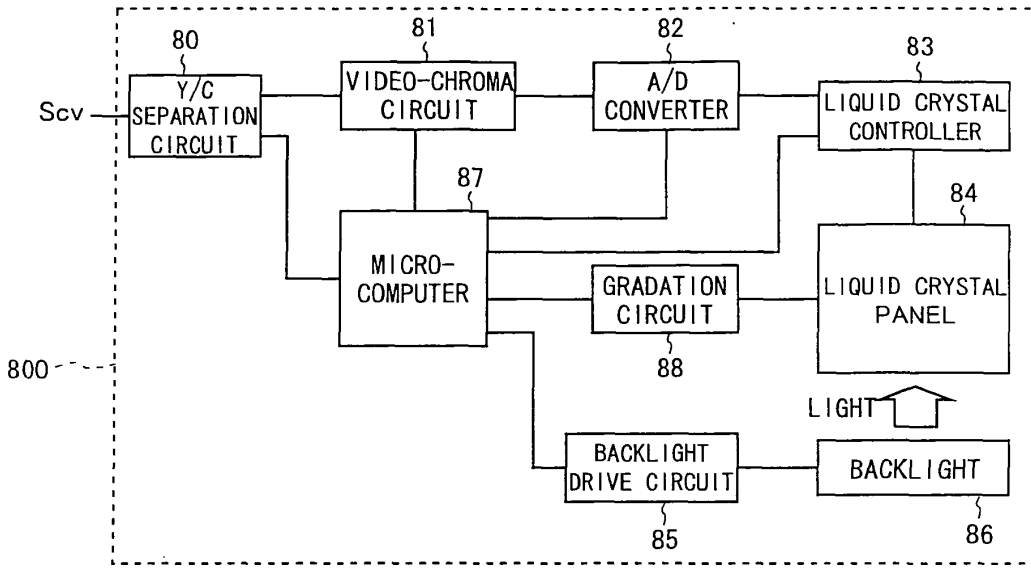


Fig.27

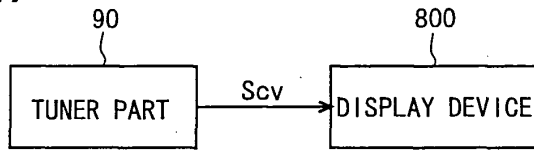


Fig.28

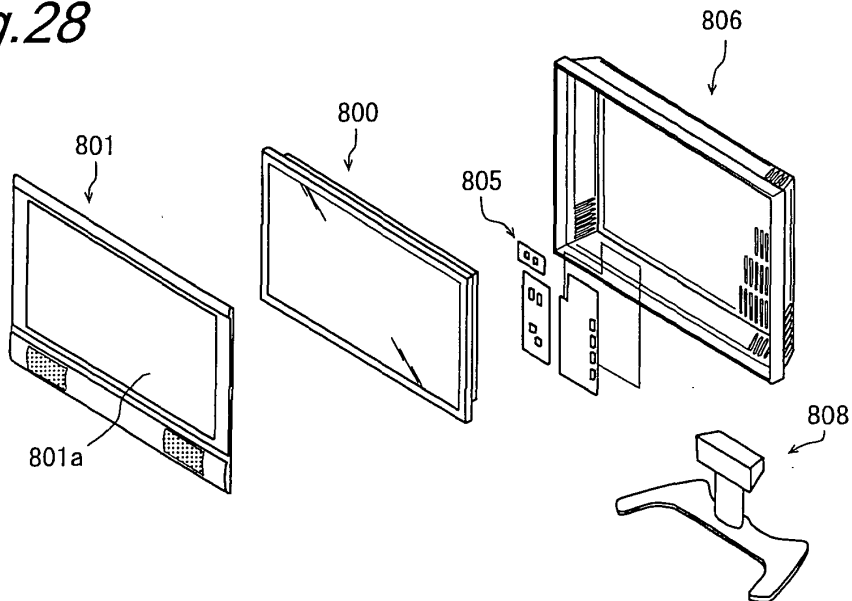
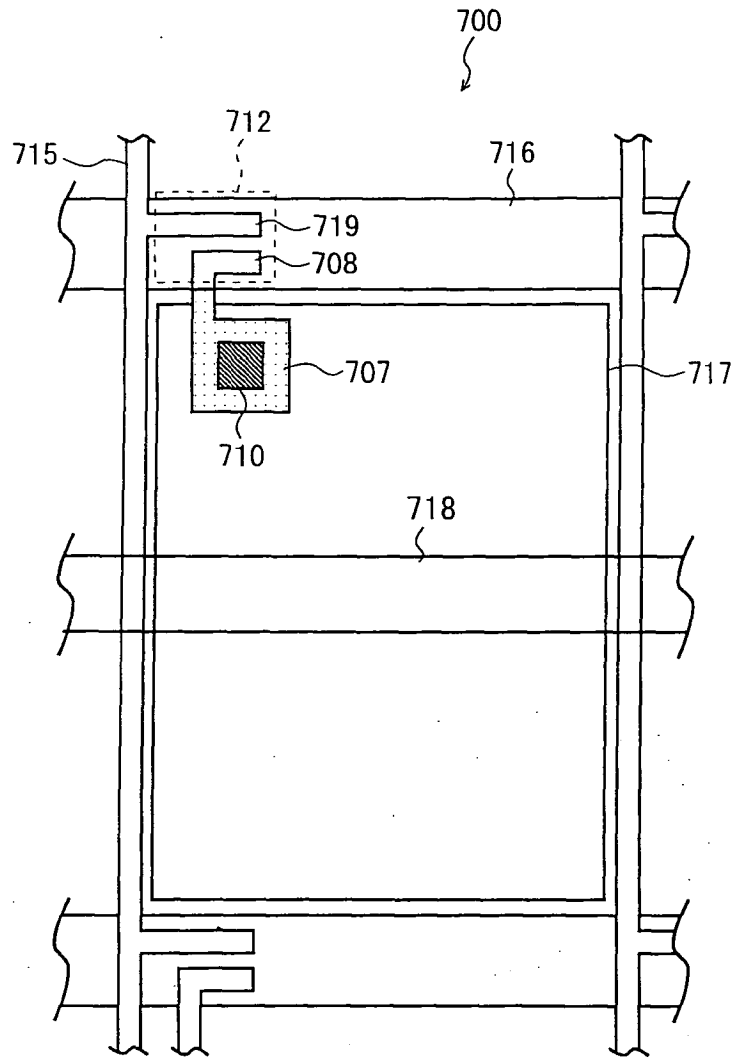


Fig.29



INTERNATIONAL SEARCH REPORT

International application No.

PCT/JP2007/055858

A. CLASSIFICATION OF SUBJECT MATTER G09G3/36(2006.01)i, G02F1/133(2006.01)i, G09G3/20(2006.01)i		
According to International Patent Classification (IPC) or to both national classification and IPC		
B. FIELDS SEARCHED		
Minimum documentation searched (classification system followed by classification symbols) G09G3/36, G02F1/133, G09G3/20		
Documentation searched other than minimum documentation to the extent that such documents are included in the fields searched Jitsuyo Shinan Koho 1922-1996 Jitsuyo Shinan Toroku Koho 1996-2007 Kokai Jitsuyo Shinan Koho 1971-2007 Toroku Jitsuyo Shinan Koho 1994-2007		
Electronic data base consulted during the international search (name of data base and, where practicable, search terms used)		
C. DOCUMENTS CONSIDERED TO BE RELEVANT		
Category*	Citation of document, with indication, where appropriate, of the relevant passages	Relevant to claim No.
Y	JP 11-30975 A (Oki Electric Industry Co., Ltd.), 02 February, 1999 (02.02.99), Par. Nos. [0047] to [0093]; Figs. 1 to 5	1-6, 8-14, 18-20
Y A	Par. Nos. [0125] to [0138]; Figs. 9 to 10 & US 2004/0041763 A1 & US 6642916 B1	11 7, 15-17
Y	JP 2000-148098 A (Zaidan Hojin Industrial Technology Research Institute), 26 May, 2000 (26.05.00), Par. Nos. [0007] to [0014]; Figs. 5 to 7 (Family: none)	1-6, 8-14, 18-20
<input checked="" type="checkbox"/> Further documents are listed in the continuation of Box C. <input type="checkbox"/> See patent family annex.		
* Special categories of cited documents:		
"A"	document defining the general state of the art which is not considered to be of particular relevance	"T" later document published after the international filing date or priority date and not in conflict with the application but cited to understand the principle or theory underlying the invention
"E"	earlier application or patent but published on or after the international filing date	"X" document of particular relevance; the claimed invention cannot be considered novel or cannot be considered to involve an inventive step when the document is taken alone
"L"	document which may throw doubts on priority claim(s) or which is cited to establish the publication date of another citation or other special reason (as specified)	"Y" document of particular relevance; the claimed invention cannot be considered to involve an inventive step when the document is combined with one or more other such documents, such combination being obvious to a person skilled in the art
"O"	document referring to an oral disclosure, use, exhibition or other means	"&" document member of the same patent family
"P"	document published prior to the international filing date but later than the priority date claimed	
Date of the actual completion of the international search 23 April, 2007 (23.04.07)	Date of mailing of the international search report 01 May, 2007 (01.05.07)	
Name and mailing address of the ISA/ Japanese Patent Office	Authorized officer	
Facsimile No.	Telephone No.	

Form PCT/ISA/210 (second sheet) (April 2005)

INTERNATIONAL SEARCH REPORT

International application No.

PCT/JP2007/055858

C (Continuation). DOCUMENTS CONSIDERED TO BE RELEVANT

Category*	Citation of document, with indication, where appropriate, of the relevant passages	Relevant to claim No.
Y	JP 61-228491 A (Hitachi, Ltd.), 11 October, 1986 (11.10.86), Page 4, upper right column, line 11 to lower left column, line 10; Figs. 11 to 12 (Family: none)	8-9
Y	JP 2003-302951 A (Sharp Corp.), 24 October, 2003 (24.10.03), Par. Nos. [0051] to [0058]; Figs. 3, 5 & US 2003/0151572 A1	18
Y	JP 2002-62855 A (Texas Instruments Japan Ltd.), 28 February, 2002 (28.02.02), Par. Nos. [0041] to [0050]; Fig. 4 (Family: none)	11
A	JP 2002-268613 A (Samsung Electronics Co., Ltd.), 20 September, 2002 (20.09.02), Par. Nos. [0016] to [0037]; Figs. 3 to 7 & US 2002/0118154 A1 & EP 1235199 A2	1-20
A	JP 2004-334171 A (Hannstar Display Corp.), 25 November, 2004 (25.11.04), Par. Nos. [0035] to [0039]; Figs. 3 to 4 & US 2004/0217931 A1 & EP 1473693 A2	7
A	JP 2006-72078 A (Mitsubishi Electric Corp.), 16 March, 2006 (16.03.06), Par. Nos. [0021] to [0034]; Figs. 1 to 2 & US 2006/0050043 A1	15-17
P,A	JP 2007-41548 A (L.G. Philips LCD Co., Ltd.), 15 February, 2007 (15.02.07), Par. Nos. [0023] to [0055]; Figs. 3 to 9 & US 2007/0030230 A1	15-17
P,A	JP 2007-25691 A (Samsung Electronics Co., Ltd.), 01 February, 2007 (01.02.07), Full text; all drawings & EP 1746569 A1 & US 2007/0013643 A1	15-17

Form PCT/ISA/210 (continuation of second sheet) (April 2005)

REFERENCES CITED IN THE DESCRIPTION

This list of references cited by the applicant is for the reader's convenience only. It does not form part of the European patent document. Even though great care has been taken in compiling the references, errors or omissions cannot be excluded and the EPO disclaims all liability in this regard.

Patent documents cited in the description

- JP 8043795 A [0005] [0007]
- JP 2004061590 A [0007] [0007] [0009]
- JP 9152625 A [0007]
- JP 9243998 A [0007]
- JP 2002268613 A [0007] [0011]

专利名称(译)	有源矩阵基板和具有该基板的显示装置		
公开(公告)号	EP2043082A4	公开(公告)日	2011-01-26
申请号	EP2007739301	申请日	2007-03-22
[标]申请(专利权)人(译)	夏普株式会社		
申请(专利权)人(译)	夏普株式会社		
当前申请(专利权)人(译)	夏普株式会社		
[标]发明人	TSUBATA TOSHIHIDE		
发明人	TSUBATA, TOSHIHIDE		
IPC分类号	G09G3/36 G02F1/133 G09G3/20		
CPC分类号	G02F1/13624 G09G3/3614 G09G3/3648 G09G3/3677 G09G3/3688 G09G2310/0291 G09G2310/061 G09G2310/08 G09G2320/0252 G09G2320/0261 G09G2330/023		
代理机构(译)	津凯, THOMAS		
优先权	2006356447 2006-12-28 JP 2006193858 2006-07-14 JP		
其他公开文献	EP2043082A1		
外部链接	Espacenet		

摘要(译)

本发明的目的是即使在采用更大尺寸或更高分辨率并且驱动频率增加时,也防止在具有有源矩阵基板的显示装置中发生显示质量的劣化。在液晶显示装置的有源矩阵基板中,配置电荷共享控制信号线(GshLj)以沿着每条栅极线(GLj)布置,并且为每条源极线设置电荷共享TFT(12)(SLi)数量等于栅极线的数量。电荷共享TFT(12)的栅极端子连接到电荷共享控制信号线(GshLj),并且源极和漏极端子经由连接电极部分(SCi和SCi)与相邻的源极线(SLi和SLi+1)连接。+1),分别。每个电荷共享控制信号线(GshLj)被提供有信号Gsh,该信号Gsh在每一个水平周期的预定时段Tsh上接通电荷共享TFT(12)。