



(11)

**EP 1 798 591 A1**

(12)

**EUROPEAN PATENT APPLICATION**  
published in accordance with Art. 158(3) EPC

(43) Date of publication:

**20.06.2007 Bulletin 2007/25**

(51) Int Cl.:

**G02F 1/133** (2006.01)

**G02F 1/1343** (2006.01)

**G09F 9/35** (2006.01)

**G09G 3/20** (2006.01)

**G09G 3/36** (2006.01)

(21) Application number: **05790494.8**

(22) Date of filing: **04.10.2005**

(86) International application number:

**PCT/JP2005/018313**

(87) International publication number:

**WO 2006/038598 (13.04.2006 Gazette 2006/15)**

(84) Designated Contracting States:

**DE FR GB**

• **OHTSUBO, Tomokazu**

**5100208 (JP)**

• **TSUBATA, Toshihide**

**5140003 (JP)**

(30) Priority: **06.10.2004 JP 2004293218**

(71) Applicant: **SHARP KABUSHIKI KAISHA**

**Osaka-shi, Osaka 545-8522 (JP)**

(74) Representative: **Brown, Kenneth Richard et al**

**R.G.C. Jenkins & Co.**

**26 Caxton Street**

**London SW1H 0RJ (GB)**

(72) Inventors:

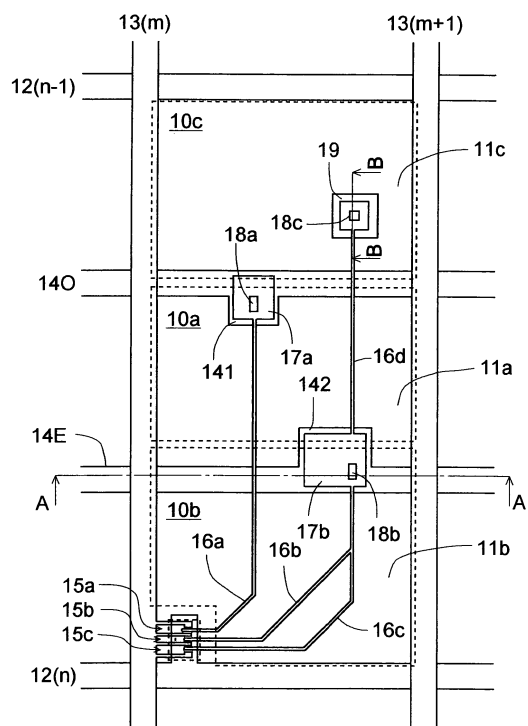
• **TAKEUCHI, Masanori**

**5140101 (JP)**

(54) **LIQUID CRYSTAL DISPLAY**

(57) A segmented-pixel liquid crystal display has a plurality of pixels of which each has three sub-pixels 10a-10c, namely one middle and two side sub-pixels, arranged next to one another in the column or row direction. The sub-pixels 10a-10c have different brightness levels when the pixel as a whole is in a given middle halftone state, and the middle sub-pixel 10a has the highest brightness level. This eliminates unnaturalness as is conventionally produced when an image with a straight border is displayed, and further improves the gamma characteristic.

**FIG.1**



**Description****Technical Field**

5     **[0001]** The present invention relates to liquid crystal displays, and more particularly to segmented-pixel liquid crystal displays.

**Background Art**

10    **[0002]** Liquid crystal displays are flat displays that boast of high resolution, slimness, lightweight, low electric power consumption, and other advantages. In recent years, liquid crystal displays have seen improvement of display performance, improvement of fabrication capacity, and price competitiveness against other types of display, and accordingly they have been enjoying a rapidly growing market.

15    **[0003]** More recently, as the display quality of liquid crystal displays has been further improved, a problem in viewing angle characteristics has become apparent: the gamma characteristic varies between in orthogonal viewing and in oblique viewing; in other words, the gamma characteristic depends on the viewing angle. Here, the gamma characteristic denotes the dependence of display brightness on halftone levels. Thus, the fact that the gamma characteristic varies between in orthogonal viewing and in oblique viewing means that the way different halftone levels are displayed varies with the direction of viewing. This is annoying especially during the display of photograph images or of TV broadcasts, among others.

20    **[0004]** This problem of the viewing-angle dependence of the gamma characteristic is more remarkable in the multi-domain vertical alignment mode (MVA mode, as disclosed in JP-A-H11-242225) and in the axisymmetric aligned mode (ASM mode, as disclosed in JP-A-H10-186330) than in the in-plane switching mode (IPS mode, as disclosed in JP-B-S63-021907). On the other hand, with the IPS mode, it is more difficult, than with the MVA or ASM mode, to fabricate liquid crystal panels that offer high contrast in orthogonal viewing with satisfactory productivity. Hence, improvements addressing the viewing-angle dependence of the gamma characteristic are sought especially eagerly in MVA and ASM mode liquid crystal displays.

25    **[0005]** Under this background, the applicant of the present invention once proposed a technology whereby each pixel is segmented into two sub-pixels to which different voltages are applied to mitigate the viewing-angle dependence of the gamma characteristic (for example, in Patent Document 1 listed below).

Patent Document 1: JP-A-2004-078157, Claims

Patent Document 2: JP-A-H6-332009, Claims

Patent Document 3: JP-A-2004-062146, Embodiments

**Disclosure of the Invention****Problems to be Solved by the Invention**

40    **[0006]** Incidentally, the human eye tends to recognize pixels and borders by being attracted by light spots and areas. On the other hand, the recent trend toward increasingly large-screen liquid crystal displays has resulted in their having larger pixels than they have conventionally had. Under these circumstances, segmenting each pixel into two sub-pixels causes an inconvenience: as a result of the human eye recognizing pixels by tracing the lighter sub-pixel of each pixel, when an image with a straight border is displayed, the line of sight moves in a zigzag along the border, from one pixel with one halftone level to another having a different halftone level, often causing the viewer to perceive unsmoothness or unnatural hues. To be sure, in conventional liquid crystal displays, certain improvements have been made to address the viewing-angle dependence of the gamma characteristic; these improvements, however, are not quite satisfactory.

45    **[0007]** An object of the present invention is to provide a segmented-pixel liquid crystal display that does not produce unnaturalness even when displaying an image with a straight border and that offers a further improved gamma characteristic.

**Means for Solving the Problem**

50    **[0008]** To achieve the above object, according to one aspect of the invention, in a liquid crystal display, a plurality of pixels, each having a plurality of electrodes for applying an electric field to a liquid crystal layer, are arrayed in a matrix; in each pixel, three sub-pixels, namely one middle and two side sub-pixels, are arranged next to one another in the column or row direction; the three sub-pixels have at least two different brightness levels when the pixel as a whole is in a given middle halftone state, and the middle sub-pixel has the highest brightness level. In the present specification,

"a middle halftone state" denotes any intermediate state between the highest and lowest halftone levels.

**[0009]** Here, preferably, the two side sub-pixels are given an identical brightness level.

**[0010]** From the viewpoint of further improving the gamma characteristic of the liquid crystal display, preferably, the ratio of the aperture area of the middle sub-pixel to the total aperture area of the two side sub-pixels is in the range from 1 : 1 to 1 : 4 and, preferably, the ratio between aperture areas of the two side sub-pixels is in the range from 1 : 1 to 1:4.

**[0011]** According to a preferred embodiment, in the liquid crystal display, preferably, the three sub-pixels each have: a liquid crystal capacitance between a sub-pixel electrode and an common electrode disposed opposite each other across the liquid crystal layer; and an auxiliary capacitance between an auxiliary capacitance electrode electrically connecting to the sub-pixel electrode and an auxiliary capacitance common electrode disposed opposite the auxiliary capacitance electrode and connecting to an auxiliary capacitance conductor. Moreover, a single electrode may be shared as the common electrodes of the three sub-pixels; moreover, at least two different auxiliary capacitance conductors may be provided, one for the middle sub-pixel and another for the side sub-pixels. Here, preferably, an insulating layer is interposed between the auxiliary capacitance electrode and the auxiliary capacitance common electrode.

**[0012]** Preferably, there are provided: scanning lines extending in the row direction; signal lines extending in the column direction; and, for each pixel, at least two switching devices that are provided one for the middle sub-pixel and another for the side sub-pixels and that connect to a scanning line and a signal line each common to the three sub-pixels of the pixel. Moreover, preferably, the switching devices are turned on and off by a scanning signal voltage supplied to the common scanning line and, when the switching devices are on, a display signal voltage is supplied from the common signal line to the sub-pixel electrode and the auxiliary capacitance electrode of each of the middle and side sub-pixels; moreover, preferably, after the switching devices are turned off, the auxiliary capacitance common voltages at the auxiliary capacitance common electrodes of the middle and side sub-pixels vary such that the variations in those voltages as defined by the directions and degrees in which they vary differ between the middle sub-pixel and the side sub-pixels.

**[0013]** Here, for a higher aperture ratio, preferably, the switching devices are TFTs, and these TFTs are formed with a single semiconductor layer.

**[0014]** The auxiliary capacitance common voltages may invert the polarities thereof periodically. Preferably, the auxiliary capacitance common voltage applied to the auxiliary capacitance common electrode of the middle sub-pixel and the auxiliary capacitance common voltage applied to the auxiliary capacitance common electrodes of the side sub-pixels are 180 degrees out of phase with each other. Preferably, the auxiliary capacitance common voltage applied to the auxiliary capacitance common electrode of the middle sub-pixel and the auxiliary capacitance common voltage applied to the auxiliary capacitance common electrodes of the side sub-pixels have an equal amplitude.

**[0015]** Preferably, between every two mutually adjacent signal lines, display signal voltages applied thereto are given opposite polarities and, between every two pixels mutually adjacent in the row direction, the auxiliary capacitance electrodes and the auxiliary capacitance common electrodes of the middle and side sub-pixels are disposed in reversed patterns.

**[0016]** From the viewpoint of improving the aperture ration, preferably, the scanning lines are laid between mutually adjacent pixels, and, in each pixel, the two auxiliary capacitance conductors are laid parallel to the scanning lines and between the sub-pixels. Here, from the viewpoint of improving image quality, preferably, the conductor electrode via which the display signal voltage is supplied to the sub-pixel electrode of the middle sub-pixel is so formed as to cross the two auxiliary capacitance conductors.

**[0017]** The sub-pixel electrodes of the three sub-pixels may be separate from one another, or may be continuous with each other.

**[0018]** From the viewpoint of preventing disturbed alignment in the liquid crystal layer and improving display quality, preferably, a metal layer is formed under a contact hole via which the conductor electrode via which the display signal voltage is supplied connects to the sub-pixel electrode, with an insulating layer interposed between the metal layer and the contact hole.

### Advantages of the Invention

**[0019]** According to the present invention, in each pixel, three sub-pixels are formed that are arranged next to one another in the column or row direction. This helps further mitigate the viewing-angle dependence of the gamma characteristic as compared with that conventionally observed. Moreover, the three sub-pixels have at least two different brightness levels when the pixel as a whole is in a given middle halftone state, and the middle sub-pixel has the highest brightness level. Thus, even when an image with a straight border is displayed, the line of sight, as it moves along the border, moves across pixels having the same halftone level, unlike in a case where each pixel has two sub-pixels. This prevents the viewer from perceiving unsmoothness or unnatural hues at a border between different halftone levels.

**[0020]** Here, preferably, the two side sub-pixels are given an identical brightness level. This helps reduce the numbers of switching devices, auxiliary capacitance conductors, and other elements, and thus helps prevent undue lowering of the aperture ratio.

**[0021]** Preferably, the ratio of the aperture area of the middle sub-pixel to the total aperture area of the two side sub-pixels is in the range from 1 : 1 to 1 : 4 and, preferably, the ratio between aperture areas of the two side sub-pixels is in the range from 1 : 1 to 1 : 4. This helps further improve the gamma characteristic of the liquid crystal display.

**[0022]** Preferably, the three sub-pixels each have: a liquid crystal capacitance between a sub-pixel electrode and an auxiliary capacitance electrode electrically connecting to the pixel electrode and an auxiliary capacitance common electrode disposed opposite the auxiliary capacitance electrode and connecting to an auxiliary capacitance conductor; moreover, a single electrode may be shared as the common electrodes of the three sub-pixels; moreover, at least two different auxiliary capacitance conductors may be provided, one for the middle sub-pixel and another for the side sub-pixels. This helps improve the controllability of the voltages applied to the sub-pixels.

**[0023]** Here, preferably, an insulating layer is interposed between the auxiliary capacitance electrode and the auxiliary capacitance common electrode. This allows those electrodes to overlap to form an auxiliary electrode, and thus helps increase the aperture ratio. Preferably, there are provided: scanning lines extending in the row direction; signal lines extending in the column direction; and, for each pixel, at least two switching devices that are provided one for the middle sub-pixel and another for the side sub-pixels and that connect to a scanning line and a signal line each common to the three sub-pixels of the pixel. Moreover, preferably, the switching devices are turned on and off by a scanning signal voltage supplied to the common scanning line and, when the switching devices are on, a display signal voltage is supplied from the common signal line to the sub-pixel electrode and the auxiliary capacitance electrode of each of the middle and side sub-pixels; moreover, preferably, after the switching devices are turned off, the auxiliary capacitance common voltages at the auxiliary capacitance common electrodes of the middle and side sub-pixels vary such that the variations in those voltages as defined by the directions and degrees in which they vary differ between the middle sub-pixel and the side sub-pixels. This helps further improve the controllability of the voltages applied to the sub-pixels.

**[0024]** Here, preferably, the switching devices are TFTs, and these TFTs are formed with a single semiconductor layer. This helps increase the aperture ratio of the pixel.

**[0025]** The auxiliary capacitance common voltages may invert the polarities thereof periodically; preferably, the auxiliary capacitance common voltage applied to the auxiliary capacitance common electrode of the middle sub-pixel and the auxiliary capacitance common voltage applied to the auxiliary capacitance common electrodes of the side sub-pixels are 180 degrees out of phase with each other; and, preferably, the auxiliary capacitance common voltage applied to the auxiliary capacitance common electrode of the middle sub-pixel and the auxiliary capacitance common voltage applied to the auxiliary capacitance common electrodes of the side sub-pixels have an equal amplitude. This helps further improve the controllability of the voltages applied to the sub-pixels.

**[0026]** Preferably, between every two mutually adjacent signal lines, display signal voltages applied thereto are given opposite polarities, in which case, preferably, between every two pixels mutually adjacent in the row direction, the auxiliary capacitance electrodes and the auxiliary capacitance common electrodes of the middle and side sub-pixels are disposed in reversed patterns. This allows the center sub-pixel to have the highest brightness.

**[0027]** Preferably, the scanning lines are laid between mutually adjacent pixels, and, in each pixel, the two auxiliary capacitance conductors are laid parallel to the scanning lines and between the sub-pixels. This helps improve the aperture ratio. Moreover, preferably, the conductor electrode via which the display signal voltage is supplied to the sub-pixel electrode of the middle sub-pixel is so formed as to cross the two auxiliary capacitance conductors. This helps cancel out the two parasitic capacitances formed where the conductor electrode crosses the auxiliary capacitance conductors, and thus helps improve image quality.

**[0028]** Preferably, a metal layer is formed under a contact hole via which the conductor electrode via which the display signal voltage is supplied connects to the sub-pixel electrode. This helps shield disturbed alignment in the liquid crystal layer, and thus helps improve image quality.

## Brief Description of Drawings

**[0029]**

[Fig. 1] A plan view schematically showing the pixel structure in a liquid crystal display according to the invention.

[Fig. 2] A cross-sectional view along line A-A shown in Fig. 1.

[Fig. 3] A cross-sectional view along line B-B shown in Fig. 1.

[Fig. 4] A graph showing the viewing-angle dependence of the gamma characteristic in relation to the ratio of the aperture area of the middle sub-pixel to the ratio of the total aperture area of the side sub-pixels.

[Fig. 5] An enlarged plan view of the TFTs shown in Fig. 1.

[Fig. 6] A circuit diagram electrically equivalent to the pixel structure in the liquid crystal display shown in Fig. 1.

[Fig. 7] A diagram schematically showing an example of the voltage waveforms with which the liquid crystal display according to the invention is driven.

[Fig. 8] A plan view schematically showing the pixel structure in another liquid crystal display according to the invention.

[Fig. 9] A plan view schematically showing another example of the sub-pixel electrodes usable in the invention.

## List of Reference Symbols

### [0030]

10a, 10b, 10c	sub-pixels
11a, 11b, 11c, 11d	sub-pixel electrodes
12	scanning lines
13	signal lines
14O, 14E	auxiliary capacitance conductors
15a, 15b, 15c	TFTs (switching devices)
16a, 16b, 16c, 16d, 16e, 16a', 16b'	extensions from drain electrodes
17a, 17b	auxiliary capacitance electrodes
18a, 18b, 18c	contact holes
19	metal layer
21	common electrode
141, 142, 141', 142'	auxiliary capacitance common electrode
SC	semiconductor layer
ClcO, ClcE <sub>1</sub> , ClcE <sub>2</sub>	liquid crystal capacitances
CcsO, CcsE	auxiliary capacitances

## Best Mode for Carrying Out the Invention

**[0031]** Hereinafter, liquid crystal displays embodying the present invention will be described with reference to the accompanying drawings. It should be understood that these embodiments are not meant to limit in any way how the invention is implemented.

**[0032]** Fig. 1 is a plan view schematically showing the pixel structure on the active matrix substrate of a liquid crystal display according to the invention, focusing on the pixel at line *n*, column *m*. Figs. 2 and 3 are cross-sectional view along lines A-A and B-B, respectively, shown in Fig. 1. Sub-pixel electrodes 11a-11c are arranged next to one another in the column direction. A scanning line 12(*n*) is laid between pixels to run laterally as seen in Fig. 1; a signal line 13(*m*) is laid between pixels to run longitudinally as seen in Fig. 1. Two auxiliary capacitance conductors 14O and 14E are laid parallel to the scanning line 12(*n*), between the sub-pixel electrodes 11a, 11b, and 11c. As switching devices, TFTs 15a-15c are provided at the intersection between the scanning line 12(*n*) and the signal line 13(*m*).

**[0033]** A drain electrode extension 16a from the TFT 15a runs over the auxiliary capacitance conductor 14E to reach above the auxiliary capacitance conductor 14O, where a portion of the drain electrode extension 16a faces, across an insulating layer (unillustrated), an auxiliary capacitance common electrode 141 formed integrally with the auxiliary capacitance conductor 14O to function as an auxiliary capacitance electrode 17a. In this auxiliary capacitance electrode 17a, a contact hole 18a is formed to connect the drain electrode extension 16a to the sub-pixel electrode 11a. Likewise, drain electrode extensions 16b and 16c merge together on the way to reach above the auxiliary capacitance conductor 14E, where a portion of the drain electrodes extension 16b and 16c faces, across an insulating layer (unillustrated), an auxiliary capacitance common electrode 142 formed integrally with the auxiliary capacitance conductor 14E to function as an auxiliary capacitance electrode 17b. In this auxiliary capacitance electrode 17b, a contact hole 18b is formed to connect the drain electrodes extension 16b and 16c to the sub-pixel electrode 11b (see Fig 2). From the auxiliary capacitance electrode 17b, a drain electrode extension 16d further extends to run over the auxiliary capacitance conductor 14O to reach above the sub-pixel electrode 11c, where the drain electrode extension 16d connects via a contact hole 18c to the sub-pixel electrode 11c (see Fig. 3).

**[0034]** As shown in Figs. 2 and 3, under the contact hole 18b, the auxiliary capacitance conductor 14E is formed with an insulating layer 21a interposed in between; under the contact hole 18c, a metal layer 19 forming an island is formed with an insulating layer 21b interposed in between. This helps shield disturbed alignment in the liquid crystal layer, and thus helps improve image quality. The insulating layer 21a, which forms an auxiliary capacitance, and the insulating layer 21b under the contact hole 18c are each, for example, the gate insulating layer of a TFT.

**[0035]** With this structure, an equal effective voltage is applied to the sub-pixel electrodes 11b and 11c. Moreover, as will be described later, by supplying different auxiliary capacitance common voltages to the two auxiliary capacitance conductors 14O and 14E, it is possible to make the effective voltage at the sub-pixel electrode 11a higher than the effective voltage at the sub-pixel electrodes 11b and 11c. Thus, it is possible to make the brightness level of a sub-pixel

10a higher than the brightness level of sub-pixels 10b and 10c. This helps eliminate unnaturalness as is conventionally produced when an image with a straight border is displayed, and also helps further mitigate the viewing-angle dependence of the gamma characteristic.

[0036] Through experiments, the applicant has come to know that an effective way to mitigate the viewing-angle dependence of the gamma characteristic is to reduce the proportion of the aperture area of the sub-pixel 10a that has a higher brightness level. In Fig. 4 is a graph showing the viewing-angle dependence in relation to the ratio of the aperture area of the higher-brightness sub-pixel 10a (indicated as "high" in the graph) to the total aperture area of the lower-brightness sub-pixels 10b and 10c (indicated as "low" in the graph). In Fig. 4, the horizontal axis represents the halftone level observed in orthogonal viewing, and the vertical axis represents the viewing-angle dependence of the gamma characteristic observed at different aperture area ratios, namely "with no pixel segmentation", "at a high-to-low ratio of 1:1", "at a high-to-low ratio of 1:3", and "at a high-to-low ratio of 1:4", by using the halftone level observed in oblique viewing from 45 degrees upward, downward, leftward, and rightward. This graph shows the following. As the proportion of the "high" brightness aperture area decreases, the gamma characteristic becomes increasingly close to the ideal straight line, becoming closest to it when the high-to-low ratio is 1:3; as the "high" brightness aperture area further decreases (to 1:4), the gamma characteristic then becomes increasingly less close to the ideal straight line. Hence, the ratio of the aperture area of the higher brightness sub-pixel 10a to the total aperture area of the lower sub-pixels 10b and 10c is preferably in the range between 1:1 to 1:4, and further preferably in the range between 1:2.5 to 1:3.5. Incidentally, the relationship between, on one hand, the just mentioned viewing-angle dependence of the gamma characteristic in relation to the aperture area ratio and, on the other hand, transmissivity is explained in JP-A-2004-062146, a prior application by the same applicant.

[0037] Moreover, the ratio between the aperture areas of the sub-pixels 10b and 10c is preferably in the range from 1:1 to 1:4, and further preferably in the range from 1:1 to 1:2. With the higher-brightness sub-pixel located in a deviated position, an evaluation of the display quality of an image of a person revealed an unintended change in color at the border of a skin-color area, like where a skin-color area, such as representing the chin of a person, overlaps a single-color background, such as clothes. This phenomenon was alleviated when the higher-brightness sub-pixel was located closer to the center.

[0038] In the embodiment under discussion, TFTs (thin-film transistors) are used as switching devices. Fig. 5 is an enlarged view of the TFTs in the liquid crystal display shown in Fig. 1. On top of a gate electrode G formed as part of the scanning line 12(n), a gate insulating film (unillustrated) is formed, and, further on top, a semiconductor layer SC is formed. On top of this semiconductor layer SC, a source electrode S and three drain electrodes D<sub>1</sub>, D<sub>2</sub>, and D<sub>3</sub> are formed. From the source electrode S, a plurality of extensions extend substantially in the shape of a comb. The drain electrodes D<sub>1</sub>, D<sub>2</sub>, and D<sub>3</sub> are formed between these extensions, with a predetermined distance secured from them.

[0039] Forming the three TFTs 15a to 15c on a single semiconductor layer SC in this way helps give the pixel a larger aperture ratio than when they are formed separately. Moreover, by varying the width W and length L of the channel regions formed between the extensions of the source electrode S and the drain electrodes D<sub>1</sub>, D<sub>2</sub>, and D<sub>3</sub>, it is possible to supply the desired current that suits the capacity of the pixel.

[0040] There are no particular restrictions on the shapes of the source electrode S, the drain electrodes D<sub>1</sub>, D<sub>2</sub>, and D<sub>3</sub>, and the semiconductor layer SC; these may be given any shapes so long as no current leakage occurs. As switching devices, any conventionally known switching devices other than TFTs may instead be used, such as MIMs (metal insulator metals).

[0041] Fig. 6 is a schematic diagram showing a circuit equivalent to the liquid crystal display shown in Fig. 1. In this diagram, the liquid crystal capacitance corresponding to the sub-pixel 10a is indicated as ClcO, and the liquid crystal capacitances corresponding to the sub-pixels 10b and 10c is indicated as ClcE<sub>1</sub> and ClcE<sub>2</sub>. The liquid crystal capacitances ClcO, ClcE<sub>1</sub>, and ClcE<sub>2</sub> of the sub-pixels 10a, 10b, and 10c are formed by the sub-pixel electrodes 11a to 11c, a common electrode 21, and the liquid crystal layer lying in between. The sub-pixel electrodes 11a to 11c are connected via the TFTs 15a to 15c to the signal line 13(m), and the gate electrode G (shown in Fig. 5) of the TFTs is connected to the scanning line 12(n).

[0042] A first auxiliary capacitance provided for the sub-pixel 10a and a second auxiliary capacitance provided for the sub-pixels 10b and 10c are indicated as CcsO and CscE in Fig. 6. The auxiliary capacitance electrode 17a of the first auxiliary capacitance CcsO is connected via the drain electrode extension 16a to the drain of the TFT 15a. The auxiliary capacitance electrode 17b of the second auxiliary capacitance CcsE is connected via the drain electrode extensions 16b and 16c to the drains of the TFTs 15b and 15c. The auxiliary capacitance electrodes 17a and 17b may be connected in any manner other than specifically illustrated, so long as they are electrically so connected as to receive voltages equal to those applied to the corresponding sub-pixel electrodes, namely the sub-pixel electrode 11a and the sub-pixel electrodes 11b and 11c, respectively; that is, the sub-pixel electrode 11a and the sub-pixel electrodes 11b and 11c have simply to be electrically connected, either directly or indirectly, to the corresponding auxiliary capacitance electrodes 17a and 17b, respectively.

[0043] The auxiliary capacitance common electrode 141 of the first auxiliary capacitance CcsO is connected to the

auxiliary capacitance conductor 14O, and the auxiliary capacitance common electrode 142 of the second auxiliary capacitance CcsE is connected to the auxiliary capacitance conductor 14E. With this structure, it is possible to apply different auxiliary capacitance common voltages to the auxiliary capacitance common electrodes 141 and 142 of the first and second auxiliary capacitance CcsO and CcsE, respectively. As will be described later, how the auxiliary capacitance common electrodes 141 and 142 are connected to the first and second auxiliary capacitances CcsO and CcsE is selected to suit the driving method adopted (for example, dot-inversion driving).

**[0044]** Next, a description will be given of the mechanism by which different voltages are applied, on one hand, to the sub-pixel electrode 11a and, on the other hand, to the sub-pixel electrodes 11b and 11c.

**[0045]** Fig. 7 shows the voltage waveforms of the signals fed to the pixel (n, m) shown in Fig. 6; that is, it shows how those signals change their voltage levels over time. In Fig. 7, at (a) is shown the waveform of the display signal voltage (half-tone signal voltage) Vs supplied to a signal line 13; at (b) is shown the waveform of the scanning signal voltage Vg supplied to a scanning line 12; at (c) and (d) are shown the waveforms of the auxiliary capacitance common voltages VcsO and VcsE supplied to the auxiliary capacitance conductors 14O and 14E, respectively; at (e) and (f) are shown the waveforms of the voltages VlcO and VlcE applied to the liquid crystal capacitances ClcE<sub>1</sub> and ClcE<sub>2</sub> of the sub-pixel 10a and of the sub-pixels 10b and 10c, respectively.

**[0046]** The driving method shown in Fig. 7 is adopted when the invention is applied to a liquid crystal display that operates on a "1H dot inversion plus frame inversion" basis.

**[0047]** The display signal voltage Vs applied to a signal line 13 inverts its polarity every time a scanning line is selected (every 1H); in addition, between every two mutually adjacent signal lines, the display signal voltages applied thereto have opposite polarities (1H inversion). Moreover, the display signal voltages Vs on all the signal lines 13 invert their polarities every frame (frame inversion).

**[0048]** In the example under discussion, the cycle at which the auxiliary capacitance common voltages VcsO and VcsE invert their polarities is 2H; moreover, the auxiliary capacitance common voltages VcsO and VcsE have waveforms such that they have an equal amplitude and are 180 degrees out of phase with each other. The cycle at which the auxiliary capacitance common voltages VcsO and VcsE invert their polarities may be longer than 2H.

**[0049]** Now, with reference to Fig. 7, a description will be given of why the voltages VlcO and VlcE applied to the liquid crystal capacitance ClcO and to the liquid crystal capacitances ClcE<sub>1</sub> and ClcE<sub>2</sub> change their voltage levels as shown in Fig. 7.

**[0050]** At time T<sub>1</sub>, the scanning signal voltage Vg turns from low (VgL) to high (VgH), and thereby brings the TFTs 15a to 15c into a conducting state, allowing the display signal voltage Vs on the signal line 13 to be applied to the sub-pixel electrodes 10a to 10c. The voltages applied across the liquid crystal capacitance ClcO and across the liquid crystal capacitances ClcE<sub>1</sub> and ClcE<sub>2</sub> are the differences between the voltages at the sub-pixel electrodes 11a to 11c and the voltage (Vcom) at the common electrode 21. That is, VlcO = VlcE<sub>1</sub> = VlcE<sub>2</sub> = Vs - Vcom.

**[0051]** At time T<sub>2</sub>, the scanning signal voltage Vg turns from high (VgH) to low (VgL, < Vs), and thereby brings the TFTs 15a to 15c into a non-conducting state (off state), electrically insulating all the sub-pixels and the auxiliary capacitances from the signal line 13. At this point, under the influence of the parasitic capacitances etc. of the TFTs 15a to 15c, the voltages at the sub-pixel electrodes 11a to 11c momentarily fall by ΔVd, a phenomenon called "pulling".

**[0052]** At time T<sub>3</sub>, the voltage VlcO at the liquid crystal capacitance ClcO changes under the influence of the voltage VcsO at the auxiliary capacitance common electrode 141 of the auxiliary capacitance CcsO, which electrode is electrically connected to the sub-pixel electrode 11a of the liquid crystal capacitance ClcO. Moreover, the voltage VlcE at the liquid crystal capacitances ClcE<sub>1</sub> and ClcE<sub>2</sub> changes under the influence of the voltage VcsE at the auxiliary capacitance common electrode 142 of the second auxiliary capacitance CcsE, which electrode is electrically connected to the sub-pixel electrodes 11b and 11c of the liquid crystal capacitances ClcE<sub>1</sub> and ClcE<sub>2</sub>.

**[0053]** Here, suppose that, at time T<sub>3</sub>, the auxiliary capacitance common voltage VcsO increases by VcsOp > 0 and the auxiliary capacitance common voltage VcsE decreases by VcsEp > 0. That is, let the whole amplitude Vp - p of the auxiliary capacitance common voltage VcsO be VcsOp, and let the whole amplitude of the auxiliary capacitance common voltage VcsE be VcsEp.

**[0054]** Moreover, let the total capacitance of the liquid crystal capacitance ClcO and the auxiliary capacitance CcsO be C<sub>pixO</sub>, and let the total capacitance of the liquid crystal capacitances ClcE<sub>1</sub> and ClcE<sub>2</sub> and the auxiliary capacitance CcsE be C<sub>pixE</sub>. Then,

$$VlcO = Vs - \Delta Vd + VcsOp (CcsO / C_{pixO}) - Vcom,$$

and

$$V_{lcE} = V_s - \Delta V_d + V_{csEp} (C_{csE} / C_{pixE}) - V_{com}.$$

5 **[0055]** Next, at time  $T_4$ , likewise under the influence of the voltages  $V_{csO}$  and  $V_{ceE}$  at the auxiliary capacitance common electrodes, the voltages  $V_{lcO}$  and  $V_{lcE}$  restore their voltages at time  $T_2$ .

$$10 \quad V_{lcO} = V_s - \Delta V_d - V_{com},$$

and

$$15 \quad V_{lcE} = V_s - \Delta V_d - V_{com}.$$

**[0056]** These changes in voltage are repeated until the voltage  $V_g(n)$  turns to  $V_gH$  in the next frame. As a result, the voltages  $V_{lcO}$  and  $V_{lcE}$  come to have different effective values. Specifically, let the effective value of the voltage  $V_{lcO}$  be  $V_{lcO_{rms}}$ , and let the effective value of the voltage  $V_{lcE}$  be  $V_{lcE_{rms}}$ , then

$$25 \quad V_{lcO_{rms}} = V_s - \Delta V_d + (1 / 2) V_{csOp} (C_{csO} / C_{pixO}) - V_{com},$$

and

$$30 \quad V_{lcE_{rms}} = V_s - \Delta V_d - (1 / 2) V_{csEp} (C_{csE} / C_{pixE}) - V_{com}$$

$$(provided\ that\ (V_s - \Delta V_d - V_{com}) \gg V_{csOp} (C_{csO} / C_{pixO}),$$

35 and

$$40 \quad (V_s - \Delta V_d - V_{com}) \gg V_{csEp} (C_{csE} / C_{pixE})).$$

Hence, let the differences between these effective values be  $\Delta V_{lc} = V_{lcO_{rms}} - V_{lcE_{rms}}$ , then

$$45 \quad \Delta V_{lc} = [V_{csOp} (C_{csO} / C_{pixO}) + V_{csEp} (C_{csE} / C_{pixE})] / 2.$$

In this way, by controlling the voltages applied to the auxiliary capacitance common electrodes 141 and 142 of the auxiliary capacitances  $C_{csO}$  and  $C_{csE}$  connected to the sub-pixel electrodes 11a to 11c, it is possible to apply different voltages to the sub-pixel electrode 11a and to the sub-pixel electrodes 11b and 11c.

**[0057]** By interchanging the voltages  $V_{csO}$  and  $V_{csE}$ , it is possible to give the voltage  $V_{lcO}$  a smaller effective value and the voltage  $V_{lcE}$  a greater effective value. Alternatively, also by reversing the combination of the auxiliary capacitance conductors 14O and 14E connected to the auxiliary capacitance common electrodes 141 and 142 of the auxiliary capacitances  $C_{csO}$  and  $C_{csE}$ , it is possible to give the voltage  $V_{lcO}$  a smaller effective value and the voltage  $V_{lcE}$  a greater effective value.

**[0058]** Here, since the driving method adopted involves frame inversion, in the next frame, the polarity of the voltage  $V_s$  is inverted, so that  $V_{lc} < 0$ . Even then, the same results as described above can be obtained by inverting the polarities of  $V_{csO}$  and  $V_{csE}$  in synchronism with frame inversion.



**[0059]** Moreover, here, since the driving method adopted involves dot inversion, between every two mutually adjacent signal lines 13 ( $m$ ) and 13( $m+1$ ), the display signal voltages supplied thereto have opposite polarities. Thus, to make the effective voltage applied to the sub-pixel electrode 11a' always higher than the effective voltage applied to the sub-pixel electrodes 11b' and 11c' even in the pixel ( $n, m+1$ ) in the next frame, as shown in Fig. 8, it is necessary that the auxiliary capacitance electrode 17a' of the sub-pixel electrode 11a' face the auxiliary capacitance common electrode 142' of the auxiliary capacitance conductor 14E and that the auxiliary capacitance electrode 17b' of the sub-pixel electrodes 11b' and 11c' face the auxiliary capacitance common electrode 141' of the auxiliary capacitance conductor 14O.

**[0060]** Here, in the pixel ( $n, m$ ), since the drain electrode extension 16a of the sub-pixel electrode 11a crosses the two auxiliary capacitance conductors 14O and 14E, and the voltages applied to the auxiliary capacitance conductors 14O and 14E are 180 degrees out of phase with each other, the parasitic capacitances attributable to the drain electrode extension 16a and attributable to the auxiliary capacitance conductors 14O and 14E cancel out. On the other hand, in the pixel ( $n, m+1$ ), although the drain electrode extension 16a' of the sub-pixel electrode 11a' does not need to cross the auxiliary capacitance conductor 14O, if the drain electrode extension 16a' of the sub-pixel electrode 11a' crosses only the auxiliary capacitance conductor 14E, the above-mentioned parasitic capacitances do not cancel out, and cause uneven display between the sub-pixel electrodes 11a and 11a'. To overcome this inconvenience, it is recommended that a drain electrode extension 16e be formed to extend further from the auxiliary capacitance electrode 17a' of the sub-pixel electrode 11a' to reach above the auxiliary capacitance conductor 14O so that together the drain electrode extensions cross the two auxiliary capacitance conductors 14O and 14E.

**[0061]** In the liquid crystal display described above, the sub-pixel electrodes 11a to 11c of the sub-pixels 10a to 10c are formed separately from one another (see Fig. 1); it is however also possible to form the sub-pixel electrodes 11b and 11c as a single sub-pixel electrode 11d as shown in Fig. 9. Even in that case, just as described previously, by controlling the voltages applied to the auxiliary capacitance common electrodes 141 and 142 connected to the sub-pixel electrodes 11a and 11d, it is possible to apply different voltages to the sub-pixel electrodes 11a and 11d. In the liquid crystal display described above, the sub-pixels are arranged next to one another in the column direction; needless to say, it is also possible to arrange them in the row direction instead.

**[0062]** The embodiment described above demonstrates that the present invention contributes to improving the gamma characteristic in normally black mode liquid crystal displays, in particular MVA mode liquid crystal displays. It should however be understood that the present invention finds application in any other type of liquid crystal display, among others, IPS liquid crystal displays.

## Industrial Applicability

**[0063]** Liquid crystal displays according to the invention offer an improved gamma characteristic with less viewing angle dependence than ever, and do not produce unsmoothness or unnatural hues along a border even when an image with a straight border is displayed. This makes liquid crystal displays according to the invention suitable for use in, for example, television monitors with large screens.

## Claims

1. A liquid crystal display having a plurality of pixels arrayed in a matrix, each pixel having a plurality of electrodes for applying an electric field to a liquid crystal layer, wherein, in each pixel, three sub-pixels, namely one middle and two side sub-pixels, are arranged next to one another in a column or row direction, the three sub-pixels have at least two different brightness levels when the pixel as a whole is in a given middle halftone state, the middle sub-pixel having a highest brightness level.
2. The liquid crystal display according to claim 1, wherein the two side sub-pixels have an identical brightness level.
3. The liquid crystal display according to claim 1 or 2, wherein a ratio of an aperture area of the middle sub-pixel to a total aperture area of the two side sub-pixels is in a range from 1 : 1 to 1 : 4.
4. The liquid crystal display according to any one of claims 1 to 3, wherein a ratio between aperture areas of the two side sub-pixels is in a range from 1 : 1 to 1 : 4.
5. The liquid crystal display according to any one of claims 1 to 4, wherein the three sub-pixels each have

a liquid crystal capacitance between a sub-pixel electrode and an common electrode disposed opposite each other across the liquid crystal layer and  
 an auxiliary capacitance between an auxiliary capacitance electrode electrically connecting to the sub-pixel electrode and an auxiliary capacitance common electrode disposed opposite the auxiliary capacitance electrode and connecting to an auxiliary capacitance conductor,  
 wherein a single electrode is shared as the common electrodes of the three sub-pixels, and  
 wherein at least two different auxiliary capacitance conductors are provided one for the middle sub-pixel and another for the side sub-pixels.

6. The liquid crystal display according to claim 5,  
 wherein an insulating layer is interposed between the auxiliary capacitance electrode and the auxiliary capacitance common electrode.

7. The liquid crystal display according to claim 5 or 6, the liquid crystal display further having  
 scanning lines extending in the row direction,  
 signal lines extending in the column direction, and,  
 for each pixel, at least two switching devices provided one for the middle sub-pixel and another for the side sub-pixels, the switching devices connecting to a scanning line and a signal line each common to the three sub-pixels of the pixel,  
 wherein the switching devices are turned on and off by a scanning signal voltage supplied to the common scanning line and, when the switching devices are on, a display signal voltage is supplied from the common signal line to the sub-pixel electrode and the auxiliary capacitance electrode of each of the middle and side sub-pixels, and  
 wherein, after the switching devices are turned off, auxiliary capacitance common voltages at the auxiliary capacitance common electrodes of the middle and side sub-pixels vary such that variations in the auxiliary capacitance common voltages as defined by directions and degrees in which the auxiliary capacitance common voltages vary differ between the middle sub-pixel and the side sub-pixels.

8. The liquid crystal display according to claim 7,  
 wherein the switching devices are TFTs, and these TFTs are formed with a single semiconductor layer.

9. The liquid crystal display according to any one of claims 5 to 8,  
 wherein the auxiliary capacitance common voltages invert polarities thereof periodically.

10. The liquid crystal display according to claim 9,  
 wherein the auxiliary capacitance common voltage applied to the auxiliary capacitance common electrode of the middle sub-pixel and the auxiliary capacitance common voltage applied to the auxiliary capacitance common electrodes of the side sub-pixels are 180 degrees out of phase with each other.

11. The liquid crystal display according to claim 10,  
 wherein the auxiliary capacitance common voltage applied to the auxiliary capacitance common electrode of the middle sub-pixel and the auxiliary capacitance common voltage applied to the auxiliary capacitance common electrodes of the side sub-pixels have an equal amplitude.

12. The liquid crystal display according to any one of claims 9 to 11,  
 wherein, between every two mutually adjacent signal lines, display signal voltages applied thereto have opposite polarities and, between every two pixels mutually adjacent in the row direction, the auxiliary capacitance electrodes and the auxiliary capacitance common electrodes of the middle and side sub-pixels are disposed in reversed patterns.

13. The liquid crystal display according to any one of claims 5 to 12,  
 wherein the scanning lines are laid between mutually adjacent pixels, and, in each pixel, the two auxiliary capacitance conductors are laid parallel to the scanning lines and between the sub-pixels.

14. The liquid crystal display according to claim 13,  
 wherein a conductor electrode via which the display signal voltage is supplied to the sub-pixel electrode of the middle sub-pixel crosses the two auxiliary capacitance conductors.

15. The liquid crystal display according to any one of claims 1 to 14,

wherein the sub-pixel electrodes of the three sub-pixels are separate from one another.

16. The liquid crystal display according to any one of claims 1 to 14,  
wherein the sub-pixel electrodes of the side sub-pixels are continuous with each other.

- 5 17. The liquid crystal display according to any one of claims 1 to 16,  
wherein a metal layer is formed under a contact hole via which a conductor electrode via which the display signal  
voltage is supplied connects to a sub-pixel electrode, with an insulating layer interposed between the metal layer  
and the contact hole.

10

15

20

25

30

35

40

45

50

55

FIG.1

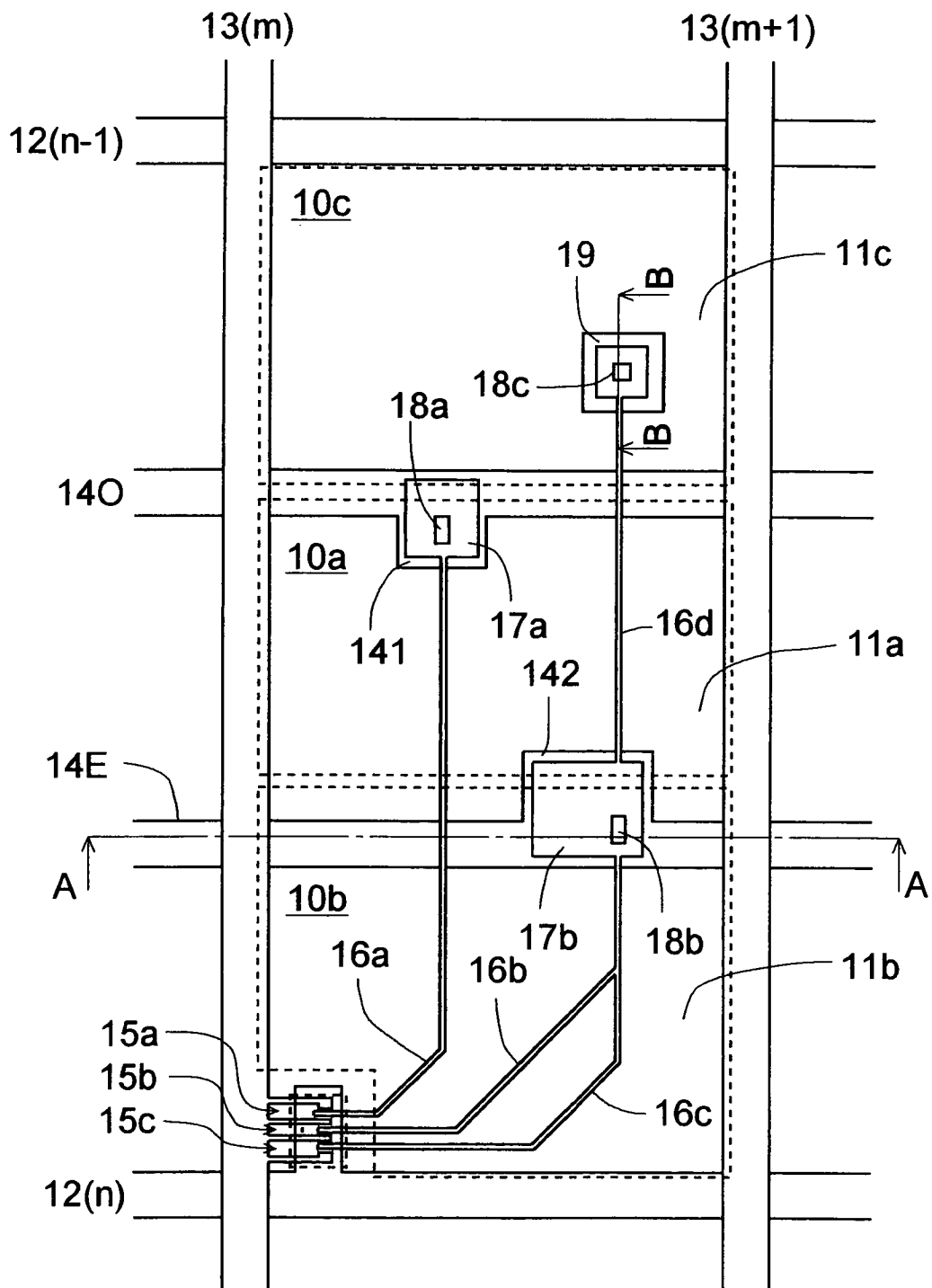


FIG.2

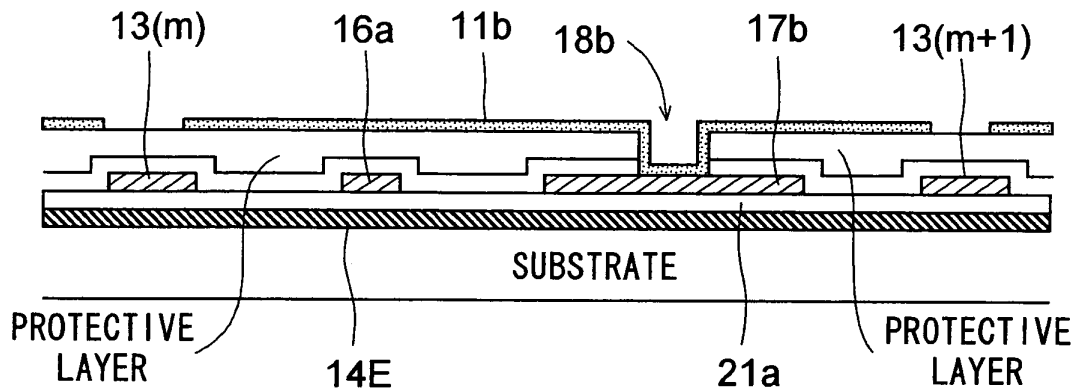


FIG.3

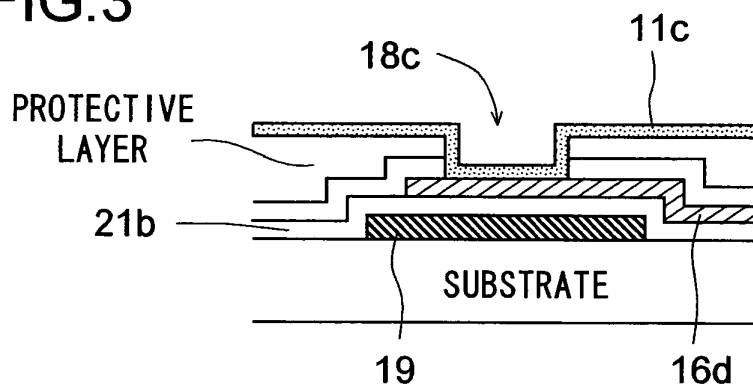


FIG.4

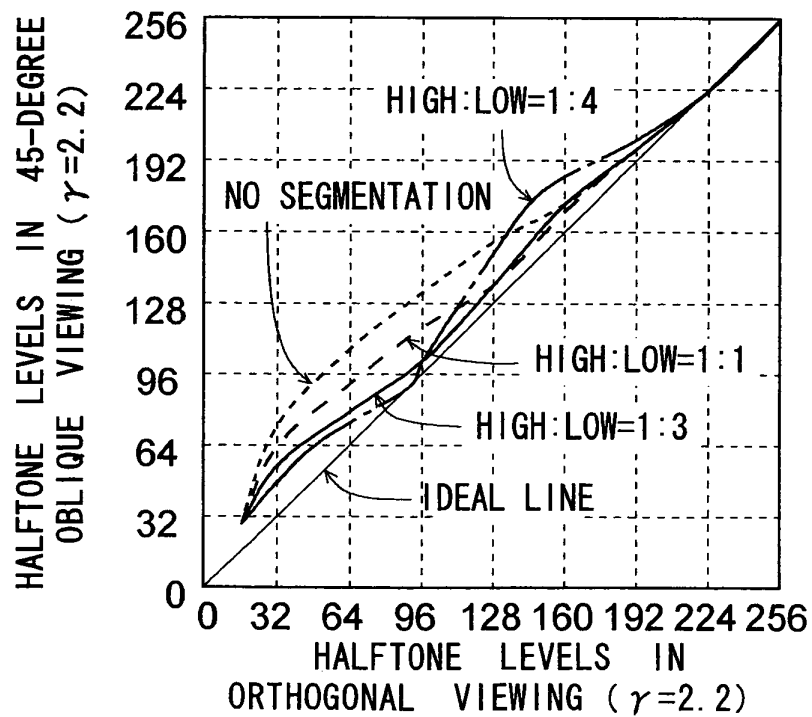


FIG.5

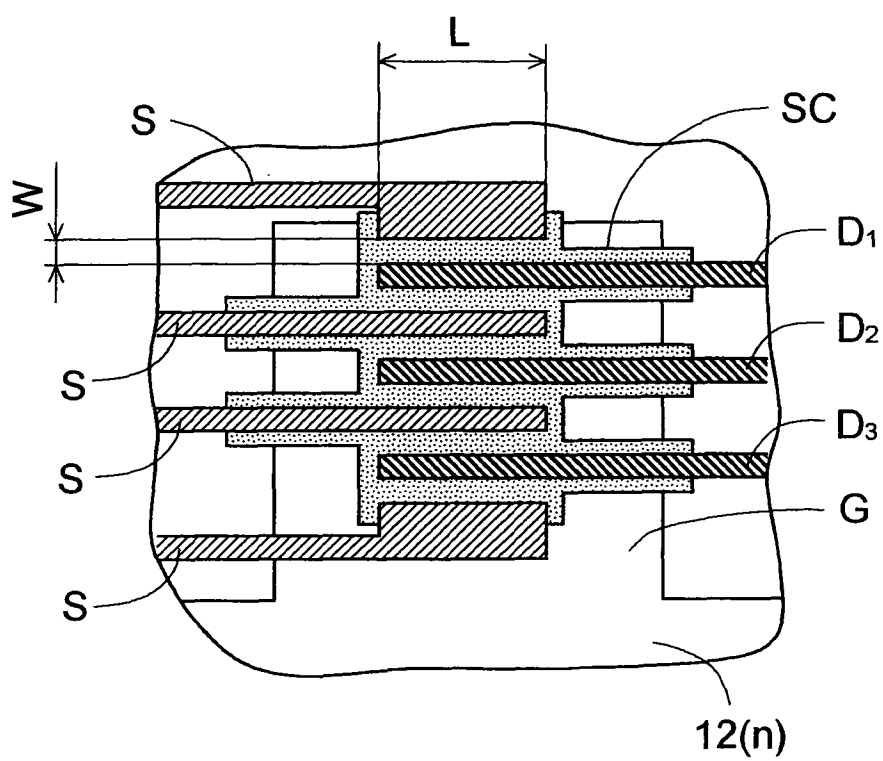


FIG.6

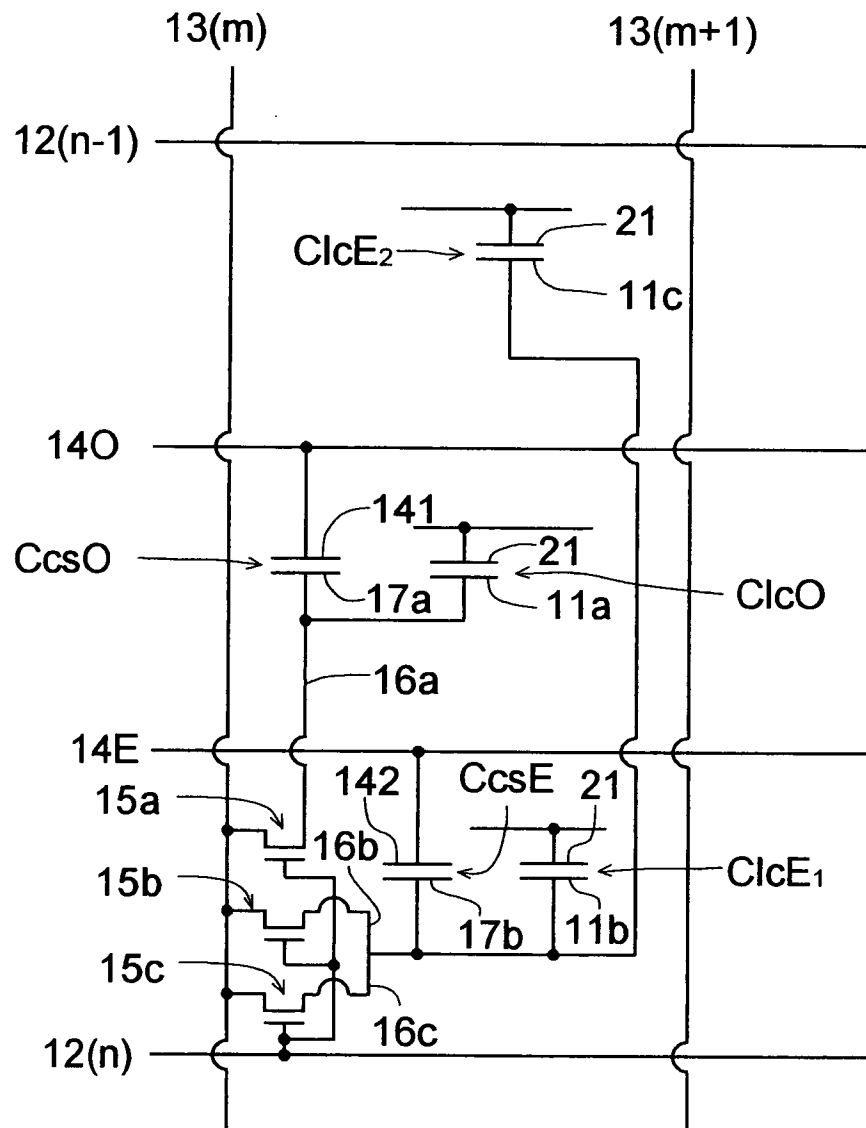


FIG.7

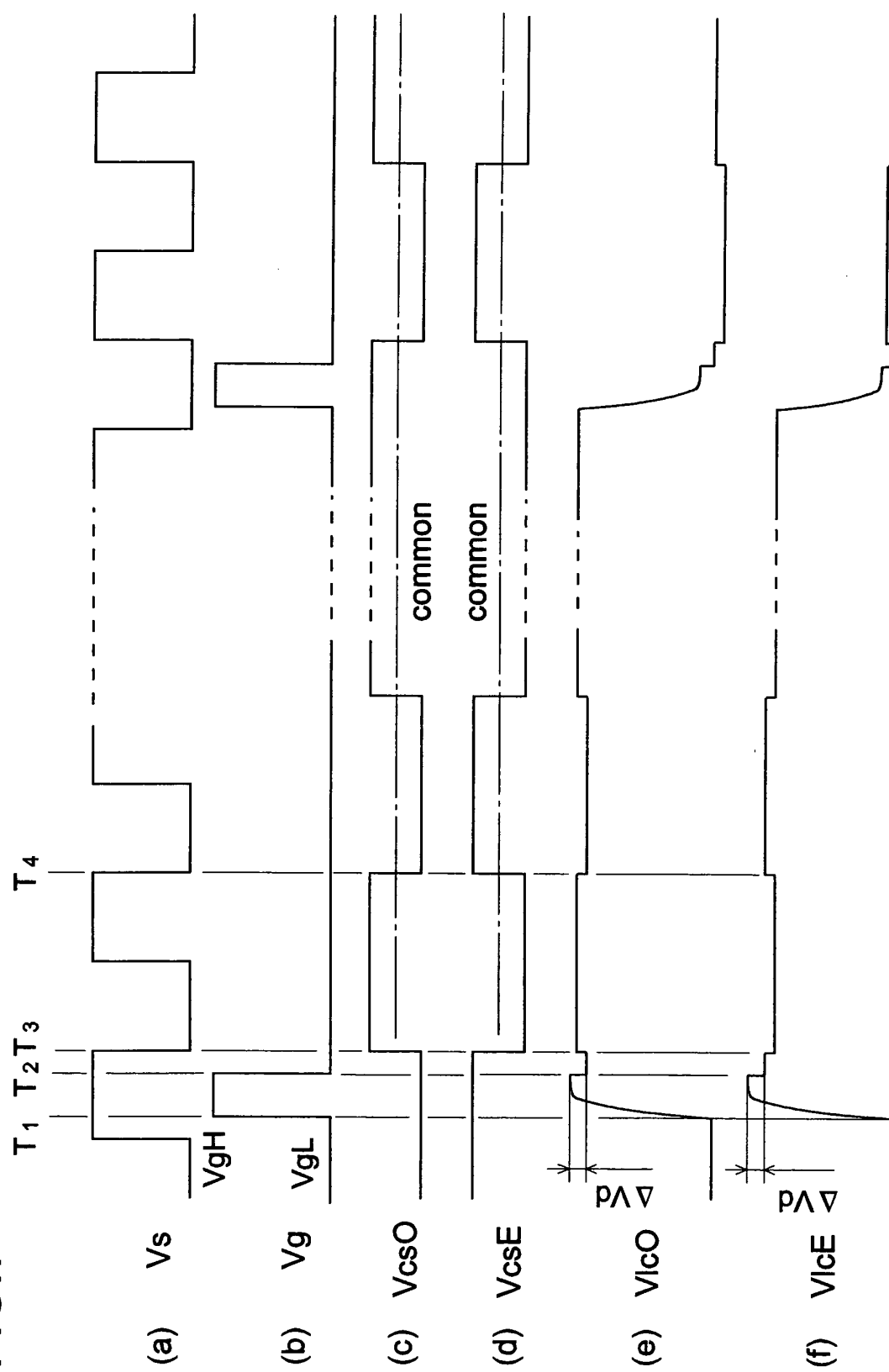




FIG.8

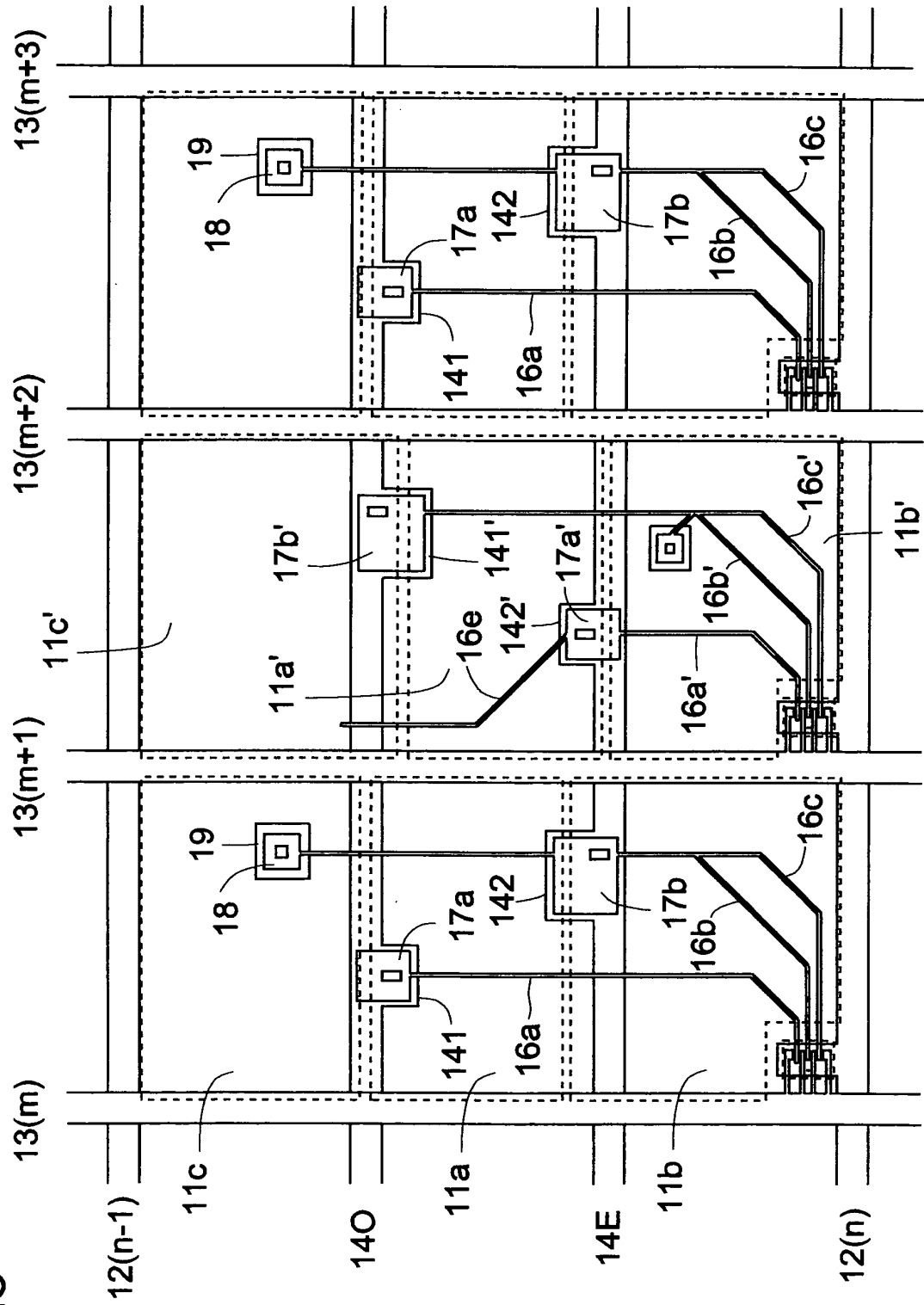
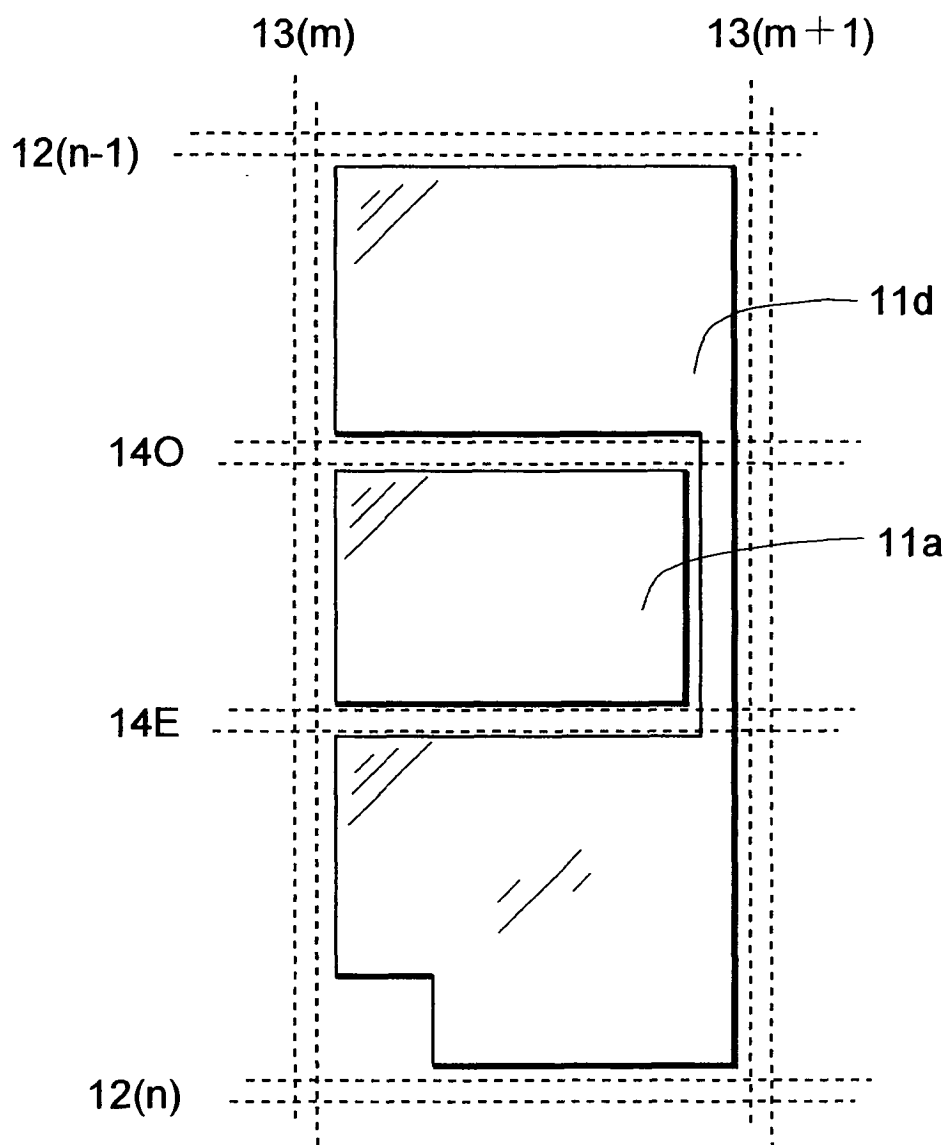


FIG.9



## INTERNATIONAL SEARCH REPORT

International application No.

PCT/JP2005/018313

## A. CLASSIFICATION OF SUBJECT MATTER

**G02F1/133** (2006.01), **G02F1/1343** (2006.01), **G09F9/35** (2006.01), **G09G3/20** (2006.01), **G09G3/36** (2006.01)

According to International Patent Classification (IPC) or to both national classification and IPC

## B. FIELDS SEARCHED

Minimum documentation searched (classification system followed by classification symbols)

**G02F1/133** (2006.01), **G02F1/1343** (2006.01), **G09F9/35** (2006.01), **G09G3/20** (2006.01), **G09G3/36** (2006.01)

Documentation searched other than minimum documentation to the extent that such documents are included in the fields searched

Jitsuyo Shinan Koho	1922-1996	Jitsuyo Shinan Toroku Koho	1996-2005
Kokai Jitsuyo Shinan Koho	1971-2005	Toroku Jitsuyo Shinan Koho	1994-2005

Electronic data base consulted during the international search (name of data base and, where practicable, search terms used)

## C. DOCUMENTS CONSIDERED TO BE RELEVANT

Category*	Citation of document, with indication, where appropriate, of the relevant passages	Relevant to claim No.
X Y	JP 2004-29716 A (Seiko Epson Corp.), 29 January, 2004 (29.01.04), Claims 1; Par. Nos. [0042] to [0065]; Figs. 1, 3 (Family: none)	1-4, 15-16 5-14, 17
Y	JP 2004-78157 A (Sharp Corp.), 11 March, 2004 (11.03.04), Claims 1 to 12; Par. Nos. [0036], [0054] to [0057], [0099]; Figs. 1, 3, 11 to 14 & US 2004-001167 A	5-14, 17
Y	JP 2004-214606 A (Kobe Steel, Ltd.), 29 July, 2004 (29.07.04), Par. Nos. [0034] to [0036]; Fig. 2 & US 2004-126608 A	17

☐ Further documents are listed in the continuation of Box C.

☐ See patent family annex.

\* Special categories of cited documents:

"A" document defining the general state of the art which is not considered to be of particular relevance

"E" earlier application or patent but published on or after the international filing date

"L" document which may throw doubts on priority claim(s) or which is cited to establish the publication date of another citation or other special reason (as specified)

"O" document referring to an oral disclosure, use, exhibition or other means

"P" document published prior to the international filing date but later than the priority date claimed

"T" later document published after the international filing date or priority date and not in conflict with the application but cited to understand the principle or theory underlying the invention

"X" document of particular relevance; the claimed invention cannot be considered novel or cannot be considered to involve an inventive step when the document is taken alone

"Y" document of particular relevance; the claimed invention cannot be considered to involve an inventive step when the document is combined with one or more other such documents, such combination being obvious to a person skilled in the art

"&" document member of the same patent family

Date of the actual completion of the international search  
31 October, 2005 (31.10.05)

Date of mailing of the international search report  
08 November, 2005 (08.11.05)

Name and mailing address of the ISA/  
Japanese Patent Office

Authorized officer

Facsimile No.

Telephone No.

**REFERENCES CITED IN THE DESCRIPTION**

*This list of references cited by the applicant is for the reader's convenience only. It does not form part of the European patent document. Even though great care has been taken in compiling the references, errors or omissions cannot be excluded and the EPO disclaims all liability in this regard.*

**Patent documents cited in the description**

- JP H11242225 A [0004]
- JP H10186330 A [0004]
- JP S63021907 B [0004]
- JP 2004078157 A [0005]
- JP H6332009 A [0005]
- JP 2004062146 A [0005] [0036]

专利名称(译)	液晶显示器		
公开(公告)号	<a href="#">EP1798591A4</a>	公开(公告)日	2009-01-07
申请号	EP2005790494	申请日	2005-10-04
[标]申请(专利权)人(译)	夏普株式会社		
申请(专利权)人(译)	夏普株式会社		
当前申请(专利权)人(译)	夏普株式会社		
[标]发明人	TAKEUCHI MASANORI OHTSUBO TOMOKAZU TSUBATA TOSHIHIDE		
发明人	TAKEUCHI, MASANORI OHTSUBO, TOMOKAZU TSUBATA, TOSHIHIDE		
IPC分类号	G02F1/133 G02F1/1343 G09F9/35 G09G3/20 G09G3/36 G02F1/1362		
CPC分类号	G02F1/13624 G02F1/134336 G02F1/136213 G02F2001/134345 G09G3/3648 G09G2300/0443 G09G2300/0447 G09G2300/0876 G09G2320/0276		
优先权	2004293218 2004-10-06 JP		
其他公开文献	EP1798591A1 EP1798591B1		
外部链接	<a href="#">Espacenet</a>		

#### 摘要(译)

分段像素液晶显示器具有多个像素，每个像素具有三个子像素10a-10c，即一个中间和两个侧子像素，在列方向或行方向上彼此相邻排列。当像素整体处于给定的中间半色调状态时，子像素10a-10c具有不同的亮度等级，并且中间子像素10a具有最高的亮度等级。这消除了当显示具有直边界的图像时传统上产生的不自然，并且进一步改善了伽玛特性。

FIG. 1

