



Europäisches Patentamt
European Patent Office
Office européen des brevets



(11) **EP 1 055 960 A3**

(12) **EUROPEAN PATENT APPLICATION**

(88) Date of publication A3:
13.12.2000 Bulletin 2000/50

(51) Int. Cl.⁷: **G02F 1/1333, G02F 1/1343**

(43) Date of publication A2:
29.11.2000 Bulletin 2000/48

(21) Application number: **00110894.3**

(22) Date of filing: **23.05.2000**

(84) Designated Contracting States:
**AT BE CH CY DE DK ES FI FR GB GR IE IT LI LU
MC NL PT SE**
Designated Extension States:
AL LT LV MK RO SI

(72) Inventors:
• **Fujioka, Kazuyoshi**
Higashiosaka-shi, Osaka (JP)
• **Nakajima, Kazuko**
Tenri-shi, Nara (JP)
• **Okazaki, Tsuyoshi**
Nara-shi, Nara (JP)
• **Ochi, Takashi**
Tenri-shi, Nara (JP)

(30) Priority: **25.05.1999 JP 14565299**

(74) Representative:
MÜLLER & HOFFMANN Patentanwälte
Innere Wiener Strasse 17
81667 München (DE)

(71) Applicant:
SHARP KABUSHIKI KAISHA
Osaka 545-8522 (JP)

(54) **Liquid crystal display device**

(57) A liquid crystal display device (100) includes: a pair of substrates (101,102) opposing each other; a liquid crystal layer (110) interposed between the pair of substrates; a plurality of switching elements (201) arranged in a matrix pattern on one of the pair of substrates; gate signal lines for supplying gate signals for driving the switching elements; source signal lines crossing the gate signal lines for supplying display signals to the switching elements; an interlayer insulating film (104) provided on one of the pair of substrates over the gate signal lines and the source signal lines; and pixel electrodes (202) provided over the gate signal lines and the source signal lines via the interlayer insulating film. The interlayer insulating film on one of the pair of substrates extends to a surrounding region of a display pixel area. An electrode pattern (105) for adsorbing an ionic impurity is provided on the interlayer insulating film in the surrounding region. The pixel electrodes and the electrode pattern can be reflective electrodes.

FIG. 1

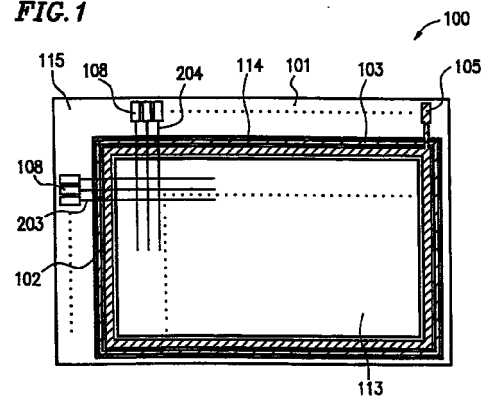
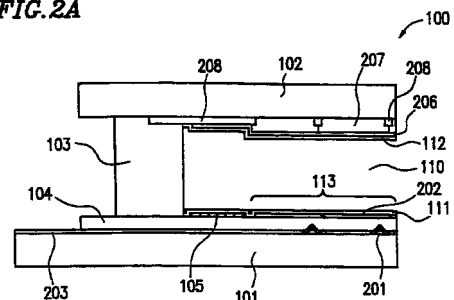


FIG. 2A



EP 1 055 960 A3



European Patent
Office

EUROPEAN SEARCH REPORT

Application Number
EP 00 11 0894

DOCUMENTS CONSIDERED TO BE RELEVANT			
Category	Citation of document with indication, where appropriate, of relevant passages	Relevant to claim	CLASSIFICATION OF THE APPLICATION (Int.Cl.7)
Y	PATENT ABSTRACTS OF JAPAN vol. 013, no. 424 (P-934), 21 September 1989 (1989-09-21) & JP 01 156725 A (SEIKO EPSON CORP), 20 June 1989 (1989-06-20) * abstract; figures 1-5 *	1-14	G02F1/1333 G02F1/1343
D,Y	PATENT ABSTRACTS OF JAPAN vol. 016, no. 386 (P-1404), 18 August 1992 (1992-08-18) & JP 04 125617 A (FUJITSU LTD), 27 April 1992 (1992-04-27) * abstract; figures 1,5 *	1-14	
Y	EP 0 749 030 A (SEIKO EPSON CORP) 18 December 1996 (1996-12-18) * column 5, line 17 - column 5, line 21 *	3	
Y	US 5 408 345 A (NAKAMURA HISAKAZU ET AL) 18 April 1995 (1995-04-18) * abstract *	3	
Y	PATENT ABSTRACTS OF JAPAN vol. 015, no. 322 (P-1239), 16 August 1991 (1991-08-16) & JP 03 118519 A (HITACHI LTD), 21 May 1991 (1991-05-21) * abstract *	9,10,12	TECHNICAL FIELDS SEARCHED (Int.Cl.7) G02F
D,Y	PATENT ABSTRACTS OF JAPAN vol. 017, no. 107 (P-1496), 4 March 1993 (1993-03-04) & JP 04 295824 A (SEIKO INSTR INC), 20 October 1992 (1992-10-20) * abstract *	9,10,12	
The present search report has been drawn up for all claims			
Place of search MUNICH		Date of completion of the search 18 September 2000	Examiner Lerbinger, K
CATEGORY OF CITED DOCUMENTS X : particularly relevant if taken alone Y : particularly relevant if combined with another document of the same category A : technological background O : non-written disclosure P : intermediate document		T : theory or principle underlying the invention E : earlier patent document, but published on, or after the filing date D : document cited in the application L : document cited for other reasons & : member of the same patent family, corresponding document	

EPO FORM 1503 03 82 (P04C01)

**ANNEX TO THE EUROPEAN SEARCH REPORT
ON EUROPEAN PATENT APPLICATION NO.**

EP 00 11 0894

This annex lists the patent family members relating to the patent documents cited in the above-mentioned European search report. The members are as contained in the European Patent Office EDP file on
The European Patent Office is in no way liable for these particulars which are merely given for the purpose of information.

18-09-2000

Patent document cited in search report	Publication date	Patent family member(s)	Publication date
JP 01156725 A	20-06-1989	NONE	
JP 04125617 A	27-04-1992	NONE	
EP 0749030 A	18-12-1996	US 6025895 A WO 9617272 A	15-02-2000 06-06-1996
US 5408345 A	18-04-1995	US 5610741 A DE 69220643 D DE 69220643 T EP 0536898 A JP 3012596 B JP 10319422 A JP 2825713 B JP 6075238 A	11-03-1997 07-08-1997 22-01-1998 14-04-1993 21-02-2000 04-12-1998 18-11-1998 18-03-1994
JP 03118519 A	21-05-1991	NONE	
JP 04295824 A	20-10-1992	NONE	

EPO FORM P0459

For more details about this annex : see Official Journal of the European Patent Office, No. 12/82

专利名称(译)	液晶显示装置		
公开(公告)号	EP1055960A3	公开(公告)日	2000-12-13
申请号	EP2000110894	申请日	2000-05-23
[标]申请(专利权)人(译)	夏普株式会社		
申请(专利权)人(译)	夏普株式会社		
当前申请(专利权)人(译)	夏普株式会社		
[标]发明人	FUJIOKA KAZUYOSHI NAKAJIMA KAZUKO OKAZAKI TSUYOSHI OCHI TAKASHI		
发明人	FUJIOKA, KAZUYOSHI NAKAJIMA, KAZUKO OKAZAKI, TSUYOSHI OCHI, TAKASHI		
IPC分类号	G02F1/1333 G02F1/1337 G02F1/1343 G02F1/1345 G02F1/136 G02F1/1362 G02F1/1368		
CPC分类号	G02F1/134336 G02F1/1362 G02F2001/133337 G02F2001/133357 G02F2001/133388 G02F2001/133397		
优先权	1999145652 1999-05-25 JP		
其他公开文献	EP1055960B1 EP1055960A2		
外部链接	Espacenet		

摘要(译)

液晶显示装置 (100) 包括 : 彼此相对的一对基板 (101,102) ; 插入在一对基板之间的液晶层 (110) ; 多个开关元件 (201) 以矩阵图案排列在一对基板之一上 ; 栅极信号线 , 用于提供用于驱动开关元件的栅极信号 ; 源极信号线与栅极信号线交叉 , 用于向开关元件提供显示信号 ; 层间绝缘膜 (104) , 设置在栅极信号线和源极信号线上的一对基板上 ; 像素电极 (202) 通过层间绝缘膜设置在栅极信号线和源极信号线上。一对基板中的一个基板上的层间绝缘膜延伸到显示像素区域的周围区域。用于吸附离子杂质的电极图案 (105) 设置在周围区域中的层间绝缘膜上。像素电极和电极图案可以是反射电极。

FIG. 1

