



(11) **EP 2 230 551 A2**

(12) **EUROPEAN PATENT APPLICATION**

(43) Date of publication:
22.09.2010 Bulletin 2010/38

(51) Int Cl.:
G02F 1/1343 ^(2006.01) **G02F 1/1362** ^(2006.01)
G09G 3/36 ^(2006.01)

(21) Application number: **10167600.5**

(22) Date of filing: **04.10.2005**

(84) Designated Contracting States:
DE FR GB

(30) Priority: **06.10.2004 JP 2004293218**

(62) Document number(s) of the earlier application(s) in accordance with Art. 76 EPC:
08013136.0 / 1 978 398
05790494.8 / 1 798 591

(71) Applicant: **Sharp Kabushiki Kaisha**
Osaka-shi, Osaka 545-8522 (JP)

(72) Inventors:
• **Takeuchi, Masanori**
Mie 514-0101 (JP)

• **Ohtsubo, Tomokazu**
Mie 510-0208 (JP)
• **Tsubata, Toshihide**
Mie 514-0003 (JP)

(74) Representative: **Brown, Kenneth Richard et al**
R.G.C. Jenkins & Co
26 Caxton Street
London SW1H 0RJ (GB)

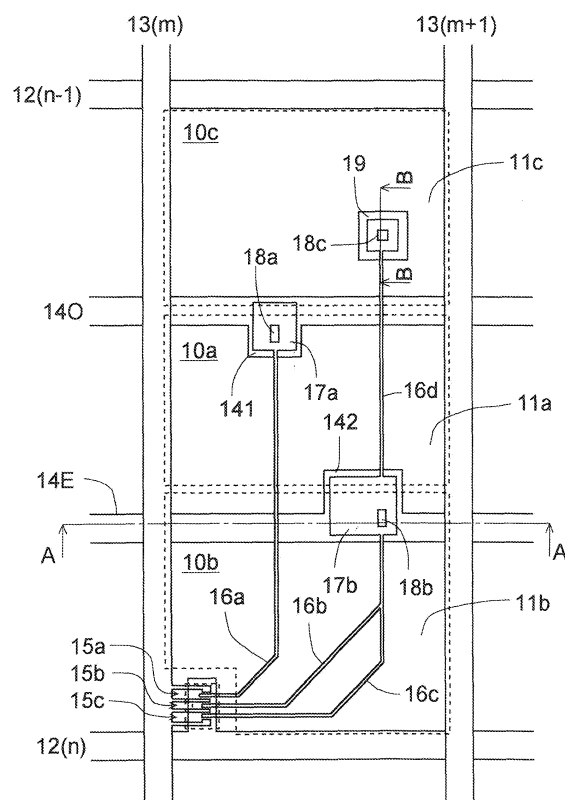
Remarks:

This application was filed on 29-06-2010 as a divisional application to the application mentioned under INID code 62.

(54) **Liquid crystal display**

(57) A liquid crystal display comprises a plurality of scanning lines (12) extending in a row direction, a plurality of signal lines (13) extending in a column direction, and a plurality of pixels (10). Each of the plurality of pixels has a bright sub-pixel (10a) and a dim sub-pixel (10b, 10c) arranged in the column direction, the bright sub-pixel in a middle halftone state having a higher brightness level than the dim sub-pixel. The bright sub-pixel has a bright sub-pixel electrode (11a) and the dim sub-pixel has a dim sub-pixel electrode (11b, 11c). A connecting conductor (16b, 16c, 16d, 17b) is provided and connects the dim sub-pixel electrode (10c) to a drain electrode of a transistor (15b, 15c). There are provided two auxiliary capacitance conductors (140, 14E) between adjacent ones (12(n-1), 12(n)) of the scanning lines parallel to the scanning lines, and the connecting conductor overlaps with the two auxiliary capacitance conductors.

FIG.1



Description**Technical Field**

5 **[0001]** The present invention relates to liquid crystal displays, and more particularly to segmented-pixel liquid crystal displays.

Background Art

10 **[0002]** Liquid crystal displays are flat displays that boast of high resolution, slimness, lightweight, low electric power consumption, and other advantages. In recent years, liquid crystal displays have seen improvement of display performance, improvement of fabrication capacity, and price competitiveness against other types of display, and accordingly they have been enjoying a rapidly growing market.

15 **[0003]** More recently, as the display quality of liquid crystal displays has been further improved, a problem in viewing angle characteristics has become apparent: the gamma characteristic varies between in orthogonal viewing and in oblique viewing; in other words, the gamma characteristic depends on the viewing angle. Here, the gamma characteristic denotes the dependence of display brightness on halftone levels. Thus, the fact that the gamma characteristic varies between in orthogonal viewing and in oblique viewing means that the way different halftone levels are displayed varies with the direction of viewing. This is annoying especially during the display of photograph images or of TV broadcasts, among others.

20 **[0004]** This problem of the viewing-angle dependence of the gamma characteristic is more remarkable in the multi-domain vertical alignment mode (MVA mode, as disclosed in JP-A-H11-242225) and in the axisymmetric aligned mode (ASM mode, as disclosed in JP-A-H10-186330) than in the in-plane switching mode (IPS mode, as disclosed in JP-B-S63-021907). On the other hand, with the IPS mode, it is more difficult, than with the MVA or ASM mode, to fabricate liquid crystal panels that offer high contrast in orthogonal viewing with satisfactory productivity. Hence, improvements addressing the viewing-angle dependence of the gamma characteristic are sought especially eagerly in MVA and ASM mode liquid crystal displays.

25 **[0005]** Under this background, the applicant of the present invention once proposed a technology whereby each pixel is segmented into two sub-pixels to which different voltages are applied to mitigate the viewing-angle dependence of the gamma characteristic (for example, in Patent Document 1 listed below).

Patent Document 1: JP-A-2004-078157, Claims

Patent Document 2: JP-A-H6-332009, Claims

Patent Document 3: JP-A-2004-062146, Embodiments

Disclosure of the Invention**Problems to be Solved by the Invention**

40 **[0006]** Incidentally, the human eye tends to recognize pixels and borders by being attracted by light spots and areas. On the other hand, the recent trend toward increasingly large-screen liquid crystal displays has resulted in their having larger pixels than they have conventionally had. Under these circumstances, segmenting each pixel into two sub-pixels causes an inconvenience: as a result of the human eye recognizing pixels by tracing the lighter sub-pixel of each pixel, when an image with a straight border is displayed, the line of sight moves in a zigzag along the border, from one pixel with one halftone level to another having a different halftone level, often causing the viewer to perceive unsmoothness or unnatural hues. To be sure, in conventional liquid crystal displays, certain improvements have been made to address the viewing-angle dependence of the gamma characteristic; these improvements, however, are not quite satisfactory.

45 **[0007]** An object of the present invention is to provide a segmented-pixel liquid crystal display that does not produce unnaturalness even when displaying an image with a straight border and that offers a further improved gamma characteristic.

Means for Solving the Problem

50 **[0008]** To achieve the above object, according to one aspect of the invention, in a liquid crystal display, a plurality of pixels, each having a plurality of electrodes for applying an electric field to a liquid crystal layer, are arrayed in a matrix; in each pixel, three sub-pixels, namely one middle and two side sub-pixels, are arranged next to one another in the column or row direction; the three sub-pixels have at least two different brightness levels when the pixel as a whole is in a given middle halftone state, and the middle sub-pixel has the highest brightness level. In the present specification,

"a middle halftone state" denotes any intermediate state between the highest and lowest halftone levels.

[0009] Here, preferably, the two side sub-pixels are given an identical brightness level.

[0010] From the viewpoint of further improving the gamma characteristic of the liquid crystal display, preferably, the ratio of the aperture area of the middle sub-pixel to the total aperture area of the two side sub-pixels is in the range from 1 : 1 to 1 : 4 and, preferably, the ratio between aperture areas of the two side sub-pixels is in the range from 1 : 1 to 1 : 4.

[0011] According to a preferred embodiment, in the liquid crystal display, preferably, the three sub-pixels each have: a liquid crystal capacitance between a sub-pixel electrode and an common electrode disposed opposite each other across the liquid crystal layer; and an auxiliary capacitance between an auxiliary capacitance electrode electrically connecting to the sub-pixel electrode and an auxiliary capacitance common electrode disposed opposite the auxiliary capacitance electrode and connecting to an auxiliary capacitance conductor. Moreover, a single electrode may be shared as the common electrodes of the three sub-pixels; moreover, at least two different auxiliary capacitance conductors may be provided, one for the middle sub-pixel and another for the side sub-pixels. Here, preferably, an insulating layer is interposed between the auxiliary capacitance electrode and the auxiliary capacitance common electrode.

[0012] Preferably, there are provided: scanning lines extending in the row direction; signal lines extending in the column direction; and, for each pixel, at least two switching devices that are provided one for the middle sub-pixel and another for the side sub-pixels and that connect to a scanning line and a signal line each common to the three sub-pixels of the pixel. Moreover, preferably, the switching devices are turned on and off by a scanning signal voltage supplied to the common scanning line and, when the switching devices are on, a display signal voltage is supplied from the common signal line to the sub-pixel electrode and the auxiliary capacitance electrode of each of the middle and side sub-pixels; moreover, preferably, after the switching devices are turned off, the auxiliary capacitance common voltages at the auxiliary capacitance common electrodes of the middle and side sub-pixels vary such that the variations in those voltages as defined by the directions and degrees in which they vary differ between the middle sub-pixel and the side sub-pixels.

[0013] Here, for a higher aperture ratio, preferably, the switching devices are TFTs, and these TFTs are formed with a single semiconductor layer.

[0014] The auxiliary capacitance common voltages may invert the polarities thereof periodically. Preferably, the auxiliary capacitance common voltage applied to the auxiliary capacitance common electrode of the middle sub-pixel and the auxiliary capacitance common voltage applied to the auxiliary capacitance common electrodes of the side sub-pixels are 180 degrees out of phase with each other. Preferably, the auxiliary capacitance common voltage applied to the auxiliary capacitance common electrode of the middle sub-pixel and the auxiliary capacitance common voltage applied to the auxiliary capacitance common electrodes of the side sub-pixels have an equal amplitude.

[0015] Preferably, between every two mutually adjacent signal lines, display signal voltages applied thereto are given opposite polarities and, between every two pixels mutually adjacent in the row direction, the auxiliary capacitance electrodes and the auxiliary capacitance common electrodes of the middle and side sub-pixels are disposed in reversed patterns.

[0016] From the viewpoint of improving the aperture ration, preferably, the scanning lines are laid between mutually adjacent pixels, and, in each pixel, the two auxiliary capacitance conductors are laid parallel to the scanning lines and between the sub-pixels. Here, from the viewpoint of improving image quality, preferably, the conductor electrode via which the display signal voltage is supplied to the sub-pixel electrode of the middle sub-pixel is so formed as to cross the two auxiliary capacitance conductors.

[0017] The sub-pixel electrodes of the three sub-pixels may be separate from one another, or may be continuous with each other.

[0018] From the viewpoint of preventing disturbed alignment in the liquid crystal layer and improving display quality, preferably, a metal layer is formed under a contact hole via which the conductor electrode via which the display signal voltage is supplied connects to the sub-pixel electrode, with an insulating layer interposed between the metal layer and the contact hole.

Advantages of the Invention

[0019] According to the present invention, in each pixel, three sub-pixels are formed that are arranged next to one another in the column or row direction. This helps further mitigate the viewing-angle dependence of the gamma characteristic as compared with that conventionally observed. Moreover, the three sub-pixels have at least two different brightness levels when the pixel as a whole is in a given middle halftone state, and the middle sub-pixel has the highest brightness level. Thus, even when an image with a straight border is displayed, the line of sight, as it moves along the border, moves across pixels having the same halftone level, unlike in a case where each pixel has two sub-pixels. This prevents the viewer from perceiving unsmoothness or unnatural hues at a border between different halftone levels.

[0020] Here, preferably, the two side sub-pixels are given an identical brightness level. This helps reduce the numbers of switching devices, auxiliary capacitance conductors, and other elements, and thus helps prevent undue lowering of the aperture ratio.

[0021] Preferably, the ratio of the aperture area of the middle sub-pixel to the total aperture area of the two side sub-pixels is in the range from 1 : 1 to 1 : 4 and, preferably, the ratio between aperture areas of the two side sub-pixels is in the range from 1 : 1 to 1 : 4. This helps further improve the gamma characteristic of the liquid crystal display.

[0022] Preferably, the three sub-pixels each have: a liquid crystal capacitance between a sub-pixel electrode and an auxiliary capacitance electrode electrically connecting to the pixel electrode and an auxiliary capacitance common electrode disposed opposite the auxiliary capacitance electrode and connecting to an auxiliary capacitance conductor; moreover, a single electrode may be shared as the common electrodes of the three sub-pixels; moreover, at least two different auxiliary capacitance conductors may be provided, one for the middle sub-pixel and another for the side sub-pixels. This helps improve the controllability of the voltages applied to the sub-pixels.

[0023] Here, preferably, an insulating layer is interposed between the auxiliary capacitance electrode and the auxiliary capacitance common electrode. This allows those electrodes to overlap to form an auxiliary electrode, and thus helps increase the aperture ratio. Preferably, there are provided: scanning lines extending in the row direction; signal lines extending in the column direction; and, for each pixel, at least two switching devices that are provided one for the middle sub-pixel and another for the side sub-pixels and that connect to a scanning line and a signal line each common to the three sub-pixels of the pixel. Moreover, preferably, the switching devices are turned on and off by a scanning signal voltage supplied to the common scanning line and, when the switching devices are on, a display signal voltage is supplied from the common signal line to the sub-pixel electrode and the auxiliary capacitance electrode of each of the middle and side sub-pixels; moreover, preferably, after the switching devices are turned off, the auxiliary capacitance common voltages at the auxiliary capacitance common electrodes of the middle and side sub-pixels vary such that the variations in those voltages as defined by the directions and degrees in which they vary differ between the middle sub-pixel and the side sub-pixels. This helps further improve the controllability of the voltages applied to the sub-pixels.

[0024] Here, preferably, the switching devices are TFTs, and these TFTs are formed with a single semiconductor layer. This helps increase the aperture ratio of the pixel.

[0025] The auxiliary capacitance common voltages may invert the polarities thereof periodically; preferably, the auxiliary capacitance common voltage applied to the auxiliary capacitance common electrode of the middle sub-pixel and the auxiliary capacitance common voltage applied to the auxiliary capacitance common electrodes of the side sub-pixels are 180 degrees out of phase with each other; and, preferably, the auxiliary capacitance common voltage applied to the auxiliary capacitance common electrode of the middle sub-pixel and the auxiliary capacitance common voltage applied to the auxiliary capacitance common electrodes of the side sub-pixels have an equal amplitude. This helps further improve the controllability of the voltages applied to the sub-pixels.

[0026] Preferably, between every two mutually adjacent signal lines, display signal voltages applied thereto are given opposite polarities, in which case, preferably, between every two pixels mutually adjacent in the row direction, the auxiliary capacitance electrodes and the auxiliary capacitance common electrodes of the middle and side sub-pixels are disposed in reversed patterns. This allows the center sub-pixel to have the highest brightness.

[0027] Preferably, the scanning lines are laid between mutually adjacent pixels, and, in each pixel, the two auxiliary capacitance conductors are laid parallel to the scanning lines and between the sub-pixels. This helps improve the aperture ratio. Moreover, preferably, the conductor electrode via which the display signal voltage is supplied to the sub-pixel electrode of the middle sub-pixel is so formed as to cross the two auxiliary capacitance conductors. This helps cancel out the two parasitic capacitances formed where the conductor electrode crosses the auxiliary capacitance conductors, and thus helps improve image quality.

[0028] Preferably, a metal layer is formed under a contact hole via which the conductor electrode via which the display signal voltage is supplied connects to the sub-pixel electrode. This helps shield disturbed alignment in the liquid crystal layer, and thus helps improve image quality.

Brief Description of Drawings

[0029]

[Fig. 1] A plan view schematically showing the pixel structure in a liquid crystal display according to the invention.

[Fig. 2] A cross-sectional view along line A-A shown in Fig. 1.

[Fig. 3] A cross-sectional view along line B-B shown in Fig. 1.

[Fig. 4] A graph showing the viewing-angle dependence of the gamma characteristic in relation to the ratio of the aperture area of the middle sub-pixel to the ratio of the total aperture area of the side sub-pixels.

[Fig. 5] An enlarged plan view of the TFTs shown in Fig. 1.

[Fig. 6] A circuit diagram electrically equivalent to the pixel structure in the liquid crystal display shown in Fig. 1.

[Fig. 7] A diagram schematically showing an example of the voltage waveforms with which the liquid crystal display according to the invention is driven.

[Fig. 8] A plan view schematically showing the pixel structure in another liquid crystal display according to the invention.

[Fig. 9] A plan view schematically showing another example of the sub-pixel electrodes usable in the invention.

List of Reference Symbols

[0030]

| | |
|---|--|
| 10a, 10b, 10c | sub-pixels |
| 11a, 11b, 11c, 11d | sub-pixel electrodes |
| 12 | scanning lines |
| 13 | signal lines |
| 140, 14E | auxiliary capacitance conductors |
| 15a, 15b, 15c | TFTs (switching devices) |
| 16a, 16b, 16c, 16d, 16e, 16a', 16b' | extensions from drain electrodes |
| 17a, 17b | auxiliary capacitance electrodes |
| 18a, 18b, 18c | contact holes |
| 19 | metal layer |
| 21 | common electrode |
| 141, 142, 141', 142' | auxiliary capacitance common electrode |
| SC | semiconductor layer |
| ClcO, ClcE ₁ , ClcE ₂ | liquid crystal capacitances |
| CcsO, CcsE | auxiliary capacitances |

Best Mode for Carrying Out the Invention

[0031] Hereinafter, liquid crystal displays embodying the present invention will be described with reference to the accompanying drawings. It should be understood that these embodiments are not meant to limit in any way how the invention is implemented.

[0032] Fig. 1 is a plan view schematically showing the pixel structure on the active matrix substrate of a liquid crystal display according to the invention, focusing on the pixel at line n , column m . Figs. 2 and 3 are cross-sectional view along lines A-A and B-B, respectively, shown in Fig. 1. Sub-pixel electrodes 11a-11c are arranged next to one another in the column direction. A scanning line 12(n) is laid between pixels to run laterally as seen in Fig. 1; a signal line 13(m) is laid between pixels to run longitudinally as seen in Fig. 1. Two auxiliary capacitance conductors 140 and 14E are laid parallel to the scanning line 12(n), between the sub-pixel electrodes 11a, 11b, and 11c. As switching devices, TFTs 15a-15c are provided at the intersection between the scanning line 12(n) and the signal line 13(m).

[0033] A drain electrode extension 16a from the TFT 15a runs over the auxiliary capacitance conductor 14E to reach above the auxiliary capacitance conductor 140, where a portion of the drain electrode extension 16a faces, across an insulating layer (unillustrated), an auxiliary capacitance common electrode 141 formed integrally with the auxiliary capacitance conductor 140 to function as an auxiliary capacitance electrode 17a. In this auxiliary capacitance electrode 17a, a contact hole 18a is formed to connect the drain electrode extension 16a to the sub-pixel electrode 11a. Likewise, drain electrode extensions 16b and 16c merge together on the way to reach above the auxiliary capacitance conductor 14E, where a portion of the drain electrodes extension 16b and 16c faces, across an insulating layer (unillustrated), an auxiliary capacitance common electrode 142 formed integrally with the auxiliary capacitance conductor 14E to function as an auxiliary capacitance electrode 17b. In this auxiliary capacitance electrode 17b, a contact hole 18b is formed to connect the drain electrodes extension 16b and 16c to the sub-pixel electrode 11b (see Fig 2). From the auxiliary capacitance electrode 17b, a drain electrode extension 16d further extends to run over the auxiliary capacitance conductor 140 to reach above the sub-pixel electrode 11c, where the drain electrode extension 16d connects via a contact hole 18c to the sub-pixel electrode 11c (see Fig. 3).

[0034] As shown in Figs. 2 and 3, under the contact hole 18b, the auxiliary capacitance conductor 14E is formed with an insulating layer 21a interposed in between; under the contact hole 18c, a metal layer 19 forming an island is formed with an insulating layer 21b interposed in between. This helps shield disturbed alignment in the liquid crystal layer, and thus helps improve image quality. The insulating layer 21a, which forms an auxiliary capacitance, and the insulating layer 21b under the contact hole 18c are each, for example, the gate insulating layer of a TFT.

[0035] With this structure, an equal effective voltage is applied to the sub-pixel electrodes 11b and 11c. Moreover, as will be described later, by supplying different auxiliary capacitance common voltages to the two auxiliary capacitance conductors 140 and 14E, it is possible to make the effective voltage at the sub-pixel electrode 11a higher than the effective voltage at the sub-pixel electrodes 11b and 11c. Thus, it is possible to make the brightness level of a sub-pixel

10a higher than the brightness level of sub-pixels 10b and 10c. This helps eliminate unnaturalness as is conventionally produced when an image with a straight border is displayed, and also helps further mitigate the viewing-angle dependence of the gamma characteristic.

[0036] Through experiments, the applicant has come to know that an effective way to mitigate the viewing-angle dependence of the gamma characteristic is to reduce the proportion of the aperture area of the sub-pixel 10a that has a higher brightness level. In Fig. 4 is a graph showing the viewing-angle dependence in relation to the ratio of the aperture area of the higher-brightness sub-pixel 10a (indicated as "high" in the graph) to the total aperture area of the lower-brightness sub-pixels 10b and 10c (indicated as "low" in the graph). In Fig. 4, the horizontal axis represents the halftone level observed in orthogonal viewing, and the vertical axis represents the viewing-angle dependence of the gamma characteristic observed at different aperture area ratios, namely "with no pixel segmentation", "at a high-to-low ratio of 1:1", "at a high-to-low ratio of 1:3", and "at a high-to-low ratio of 1:4", by using the halftone level observed in oblique viewing from 45 degrees upward, downward, leftward, and rightward. This graph shows the following. As the proportion of the "high" brightness aperture area decreases, the gamma characteristic becomes increasingly close to the ideal straight line, becoming closest to it when the high-to-low ratio is 1 : 3; as the "high" brightness aperture area further decreases (to 1:4), the gamma characteristic then becomes increasingly less close to the ideal straight line. Hence, the ratio of the aperture area of the higher brightness sub-pixel 10a to the total aperture area of the lower sub-pixels 10b and 10c is preferably in the range between 1 : 1 to 1 : 4, and further preferably in the range between 1 : 2.5 to 1 : 3.5. Incidentally, the relationship between, on one hand, the just mentioned viewing-angle dependence of the gamma characteristic in relation to the aperture area ratio and, on the other hand, transmissivity is explained in JP-A-2004-062146, a prior application by the same applicant.

[0037] Moreover, the ratio between the aperture areas of the sub-pixels 10b and 10c is preferably in the range from 1 : 1 to 1 : 4, and further preferably in the range from 1 :

1 to 1 : 2. With the higher-brightness sub-pixel located in a deviated position, an evaluation of the display quality of an image of a person revealed an unintended change in color at the border of a skin-color area, like where a skin-color area, such as representing the chin of a person, overlaps a single-color background, such as clothes. This phenomenon was alleviated when the higher-brightness sub-pixel was located closer to the center.

[0038] In the embodiment under discussion, TFTs (thin-film transistors) are used as switching devices. Fig. 5 is an enlarged view of the TFTs in the liquid crystal display shown in Fig. 1. On top of a gate electrode G formed as part of the scanning line 12(n), a gate insulating film (unillustrated) is formed, and, further on top, a semiconductor layer SC is formed. On top of this semiconductor layer SC, a source electrode S and three drain electrodes D₁, D₂, and D₃ are formed. From the source electrode S, a plurality of extensions extend substantially in the shape of a comb. The drain electrodes D₁, D₂, and D₃ are formed between these extensions, with a predetermined distance secured from them.

[0039] Forming the three TFTs 15a to 15c on a single semiconductor layer SC in this way helps give the pixel a larger aperture ratio than when they are formed separately. Moreover, by varying the width W and length L of the channel regions formed between the extensions of the source electrode S and the drain electrodes D₁, D₂, and D₃, it is possible to supply the desired current that suits the capacity of the pixel.

[0040] There are no particular restrictions on the shapes of the source electrode S, the drain electrodes D₁, D₂, and D₃, and the semiconductor layer SC; these may be given any shapes so long as no current leakage occurs. As switching devices, any conventionally known switching devices other than TFTs may instead be used, such as MIMs (metal insulator metals).

[0041] Fig. 6 is a schematic diagram showing a circuit equivalent to the liquid crystal display shown in Fig. 1. In this diagram, the liquid crystal capacitance corresponding to the sub-pixel 10a is indicated as ClcO, and the liquid crystal capacitances corresponding to the sub-pixels 10b and 10c is indicated as ClcE₁ and ClcE₂. The liquid crystal capacitances ClcO, ClcE₁, and ClcE₂ of the sub-pixels 10a, 10b, and 10c are formed by the sub-pixel electrodes 11a to 11c, a common electrode 21, and the liquid crystal layer lying in between. The sub-pixel electrodes 11a to 11c are connected via the TFTs 15a to 15c to the signal line 13(m), and the gate electrode G (shown in Fig. 5) of the TFTs is connected to the scanning line 12(n).

[0042] A first auxiliary capacitance provided for the sub-pixel 10a and a second auxiliary capacitance provided for the sub-pixels 10b and 10c are indicated as CcsO and CscE in Fig. 6. The auxiliary capacitance electrode 17a of the first auxiliary capacitance CcsO is connected via the drain electrode extension 16a to the drain of the TFT 15a. The auxiliary capacitance electrode 17b of the second auxiliary capacitance CscE is connected via the drain electrode extensions 16b and 16c to the drains of the TFTs 15b and 15c. The auxiliary capacitance electrodes 17a and 17b may be connected in any manner other than specifically illustrated, so long as they are electrically so connected as to receive voltages equal to those applied to the corresponding sub-pixel electrodes, namely the sub-pixel electrode 11a and the sub-pixel electrodes 11b and 11c, respectively; that is, the sub-pixel electrode 11a and the sub-pixel electrodes 11b and 11c have simply to be electrically connected, either directly or indirectly, to the corresponding auxiliary capacitance electrodes

17a and 17b, respectively.

[0043] The auxiliary capacitance common electrode 141 of the first auxiliary capacitance CcsO is connected to the auxiliary capacitance conductor 140, and the auxiliary capacitance common electrode 142 of the second auxiliary capacitance CcsE is connected to the auxiliary capacitance conductor 14E. With this structure, it is possible to apply different auxiliary capacitance common voltages to the auxiliary capacitance common electrodes 141 and 142 of the first and second auxiliary capacitance CcsO and CcsE, respectively. As will be described later, how the auxiliary capacitance common electrodes 141 and 142 are connected to the first and second auxiliary capacitances CcsO and CcsE is selected to suit the driving method adopted (for example, dot-inversion driving).

[0044] Next, a description will be given of the mechanism by which different voltages are applied, on one hand, to the sub-pixel electrode 11a and, on the other hand, to the sub-pixel electrodes 11b and 11c.

[0045] Fig. 7 shows the voltage waveforms of the signals fed to the pixel (n, m) shown in Fig. 6; that is, it shows how those signals change their voltage levels over time. In Fig. 7, at (a) is shown the waveform of the display signal voltage (half-tone signal voltage) Vs supplied to a signal line 13; at (b) is shown the waveform of the scanning signal voltage Vg supplied to a scanning line 12; at (c) and (d) are shown the waveforms of the auxiliary capacitance common voltages VcsO and VcsE supplied to the auxiliary capacitance conductors 140 and 14E, respectively; at (e) and (f) are shown the waveforms of the voltages VlcO and VlcE applied to the liquid crystal capacitances ClcE₁ and ClcE₂ of the sub-pixel 10a and of the sub-pixels 10b and 10c, respectively.

[0046] The driving method shown in Fig. 7 is adopted when the invention is applied to a liquid crystal display that operates on a "1H dot inversion plus frame inversion" basis.

[0047] The display signal voltage Vs applied to a signal line 13 inverts its polarity every time a scanning line is selected (every 1H); in addition, between every two mutually adjacent signal lines, the display signal voltages applied thereto have opposite polarities (1H inversion). Moreover, the display signal voltages Vs on all the signal lines 13 invert their polarities every frame (frame inversion).

[0048] In the example under discussion, the cycle at which the auxiliary capacitance common voltages VcsO and VcsE invert their polarities is 2H; moreover, the auxiliary capacitance common voltages VcsO and VcsE have waveforms such that they have an equal amplitude and are 180 degrees out of phase with each other. The cycle at which the auxiliary capacitance common voltages VcsO and VcsE invert their polarities may be longer than 2H.

[0049] Now, with reference to Fig. 7, a description will be given of why the voltages VlcO and VlcE applied to the liquid crystal capacitance ClcO and to the liquid crystal capacitances ClcE₁ and ClcE₂ change their voltage levels as shown in Fig. 7.

[0050] At time T₁, the scanning signal voltage Vg turns from low (VgL) to high (VgH), and thereby brings the TFTs 15a to 15c into a conducting state, allowing the display signal voltage Vs on the signal line 13 to be applied to the sub-pixel electrodes 10a to 10c. The voltages applied across the liquid crystal capacitance ClcO and across the liquid crystal capacitances ClcE₁ and ClcE₂ are the differences between the voltages at the sub-pixel electrodes 11a to 11c and the voltage (Vcom) at the common electrode 21. That is, VlcO = VlcE₁ = VlcE₂ = Vs - Vcom.

[0051] At time T₂, the scanning signal voltage Vg turns from high (VgH) to low (VgL, < Vs), and thereby brings the TFTs 15a to 15c into a non-conducting state (off state), electrically insulating all the sub-pixels and the auxiliary capacitances from the signal line 13. At this point, under the influence of the parasitic capacitances etc. of the TFTs 15a to 15c, the voltages at the sub-pixel electrodes 11a to 11c momentarily fall by ΔVd, a phenomenon called "pulling".

[0052] At time T₃, the voltage VlcO at the liquid crystal capacitance ClcO changes under the influence of the voltage VcsO at the auxiliary capacitance common electrode 141 of the auxiliary capacitance CcsO, which electrode is electrically connected to the sub-pixel electrode 11a of the liquid crystal capacitance ClcO. Moreover, the voltage VlcE at the liquid crystal capacitances ClcE₁ and ClcE₂ changes under the influence of the voltage VcsE at the auxiliary capacitance common electrode 142 of the second auxiliary capacitance CcsE, which electrode is electrically connected to the sub-pixel electrodes 11b and 11c of the liquid crystal capacitances ClcE₁ and ClcE₂.

[0053] Here, suppose that, at time T₃, the auxiliary capacitance common voltage VcsO increases by VcsOp > 0 and the auxiliary capacitance common voltage VcsE decreases by VcsEp > 0. That is, let the whole amplitude Vp - p of the auxiliary capacitance common voltage VcsO be VcsOp, and let the whole amplitude of the auxiliary capacitance common voltage VcsE be VcsEp.

[0054] Moreover, let the total capacitance of the liquid crystal capacitance ClcO and the auxiliary capacitance CcsO be C_{pixO}, and let the total capacitance of the liquid crystal capacitances ClcE₁ and ClcE₂ and the auxiliary capacitance CcsE be C_{pixE}. Then,

$$VlcO = Vs - \Delta Vd + VcsOp (CcsO / C_{pixO}) - Vcom, ;$$

and

$$V_{lcE} = V_s - \Delta V_d + V_{csEp} (C_{csE} / C_{pixE}) - V_{com}.$$

[0055] Next, at time T_4 , likewise under the influence of the voltages V_{csO} and V_{ceE} at the auxiliary capacitance common electrodes, the voltages V_{lcO} and V_{lcE} restore their voltages at time T_2 .

10

$$V_{lcO} = V_s - \Delta V_d - V_{com},$$

15

and

$$V_{lcE} = V_s - \Delta V_d - V_{com}.$$

20

[0056] These changes in voltage are repeated until the voltage $V_g(n)$ turns to V_gH in the next frame. As a result, the voltages V_{lcO} and V_{lcE} come to have different effective values. Specifically, let the effective value of the voltage V_{lcO} be $V_{lcO_{rms}}$, and let the effective value of the voltage V_{lcE} be $V_{lcE_{rms}}$, then

25

$$V_{lcO_{rms}} = V_s - \Delta V_d + (1 / 2) V_{csOp} (C_{csO} / C_{pixO}) - V_{com},$$

30

and

$$V_{lcE_{rms}} = V_s - \Delta V_d - (1 / 2) V_{csEp} (C_{csE} / C_{pixE}) - V_{com}$$

35

(provided that $(V_s - \Delta V_d - V_{com}) \gg V_{csOp} (C_{csO} / C_{pixO})$, and

40

$$(V_s - \Delta V_d - V_{com}) \gg V_{csEp} (C_{csE} / C_{pixE}).$$

45

Hence, let the differences between these effective values be $\Delta V_{lc} = V_{lcO_{rms}} - V_{lcE_{rms}}$, then

$$\Delta V_{lc} = [V_{csOp} (C_{csO} / C_{pixO}) + V_{csEp} (C_{csE} / C_{pixE})] / 2.$$

50

In this way, by controlling the voltages applied to the auxiliary capacitance common electrodes 141 and 142 of the auxiliary capacitances C_{csO} and C_{csE} connected to the sub-pixel electrodes 11a to 11c, it is possible to apply different voltages to the sub-pixel electrode 11a and to the sub-pixel electrodes 11b and 11c.

55

[0057] By interchanging the voltages V_{csO} and V_{csE} , it is possible to give the voltage V_{lcO} a smaller effective value and the voltage V_{lcE} a greater effective value. Alternatively, also by reversing the combination of the auxiliary capacitance

conductors 140 and 14E connected to the auxiliary capacitance common electrodes 141 and 142 of the auxiliary capacitances CcsO and CcsE, it is possible to give the voltage V_{lcO} a smaller effective value and the voltage V_{lcE} a greater effective value.

[0058] Here, since the driving method adopted involves frame inversion, in the next frame, the polarity of the voltage V_s is inverted, so that $V_{lc} < 0$. Even then, the same results as described above can be obtained by inverting the polarities of V_{csO} and V_{csE} in synchronism with frame inversion.

[0059] Moreover, here, since the driving method adopted involves dot inversion, between every two mutually adjacent signal lines 13 (m) and 13($m+1$), the display signal voltages supplied thereto have opposite polarities. Thus, to make the effective voltage applied to the sub-pixel electrode 11a' always higher than the effective voltage applied to the sub-pixel electrodes 11b' and 11c' even in the pixel ($n, m+1$) in the next frame, as shown in Fig. 8, it is necessary that the auxiliary capacitance electrode 17a' of the sub-pixel electrode 11a' face the auxiliary capacitance common electrode 142' of the auxiliary capacitance conductor 14E and that the auxiliary capacitance electrode 17b' of the sub-pixel electrodes 11b' and 11c' face the auxiliary capacitance common electrode 141' of the auxiliary capacitance conductor 140.

[0060] Here, in the pixel (n, m), since the drain electrode extension 16a of the sub-pixel electrode 11a crosses the two auxiliary capacitance conductors 140 and 14E, and the voltages applied to the auxiliary capacitance conductors 140 and 14E are 180 degrees out of phase with each other, the parasitic capacitances attributable to the drain electrode extension 16a and attributable to the auxiliary capacitance conductors 140 and 14E cancel out. On the other hand, in the pixel ($n, m+1$), although the drain electrode extension 16a' of the sub-pixel electrode 11a' does not need to cross the auxiliary capacitance conductor 140, if the drain electrode extension 16a' of the sub-pixel electrode 11a' crosses only the auxiliary capacitance conductor 14E, the above-mentioned parasitic capacitances do not cancel out, and cause uneven display between the sub-pixel electrodes 11a and 11a'. To overcome this inconvenience, it is recommended that a drain electrode extension 16e be formed to extend further from the auxiliary capacitance electrode 17a' of the sub-pixel electrode 11a' to reach above the auxiliary capacitance conductor 140 so that together the drain electrode extensions cross the two auxiliary capacitance conductors 140 and 14E.

[0061] In the liquid crystal display described above, the sub-pixel electrodes 11a to 11c of the sub-pixels 10a to 10c are formed separately from one another (see Fig. 1); it is however also possible to form the sub-pixel electrodes 11b and 11c as a single sub-pixel electrode 11d as shown in Fig. 9. Even in that case, just as described previously, by controlling the voltages applied to the auxiliary capacitance common electrodes 141 and 142 connected to the sub-pixel electrodes 11a and 11d, it is possible to apply different voltages to the sub-pixel electrodes 11a and 11d. In the liquid crystal display described above, the sub-pixels are arranged next to one another in the column direction; needless to say, it is also possible to arrange them in the row direction instead.

[0062] The embodiment described above demonstrates that the present invention contributes to improving the gamma characteristic in normally black mode liquid crystal displays, in particular MVA mode liquid crystal displays. It should however be understood that the present invention finds application in any other type of liquid crystal display, among others, IPS liquid crystal displays.

Industrial Applicability

[0063] Liquid crystal displays according to the invention offer an improved gamma characteristic with less viewing angle dependence than ever, and do not produce unsmoothness or unnatural hues along a border even when an image with a straight border is displayed. This makes liquid crystal displays according to the invention suitable for use in, for example, television monitors with large screens.

Claims

1. A liquid crystal display comprising a plurality of scanning lines (12) extending in a row direction, a plurality of signal lines (13) extending in a column direction, and a plurality of pixels (10), each of the plurality of pixels having a bright sub-pixel (10a) and a dim sub-pixel (10b, 10c) arranged in the column direction, the bright sub-pixel in a middle halftone state having a higher brightness level than the dim sub-pixel, the bright sub-pixel having a bright sub-pixel electrode (11a) and the dim sub-pixel having a dim sub-pixel electrode (11b, 11c), there being provided a connecting conductor (16b, 16c, 16d, 17b) connecting the dim sub-pixel electrode (10c) to a drain electrode of a transistor (15b, 15c), there being provided two auxiliary capacitance conductors (14O, 14E) between adjacent ones (12(n-1), 12(n)) of the scanning lines parallel to the scanning lines, and the connecting conductor overlapping with the two auxiliary capacitance conductors.

2. The liquid crystal display according to claim 1,
wherein the connecting conductor is made wider in a region (17b) overlapping with one (14E) of the two auxiliary
capacitance conductors closer to the transistor.

5

10

15

20

25

30

35

40

45

50

55

FIG.1

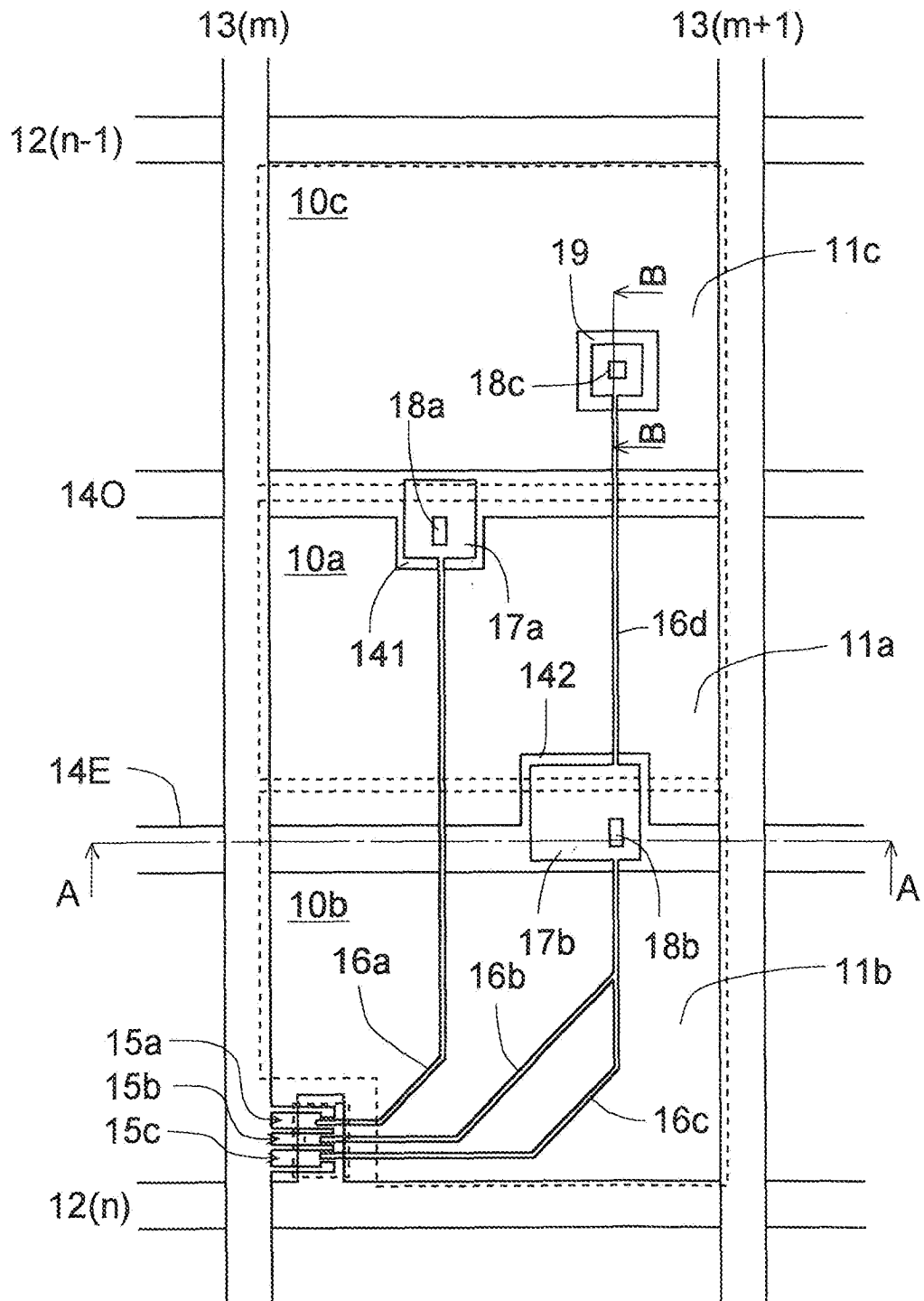


FIG.2

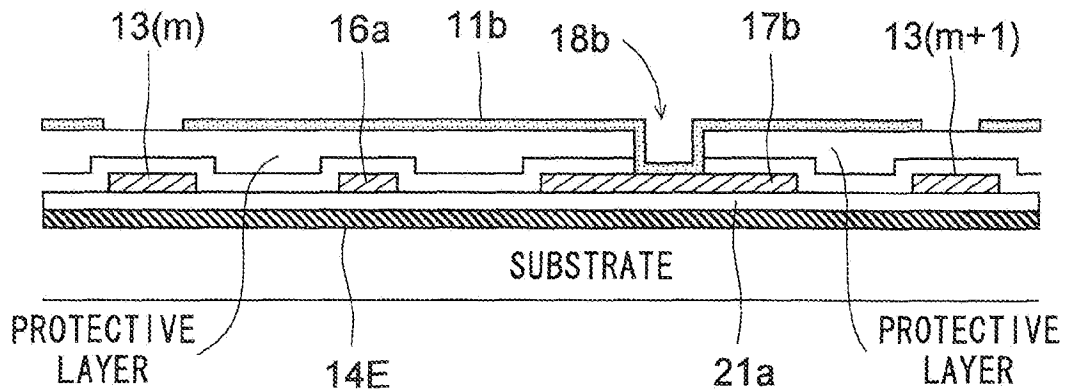


FIG.3

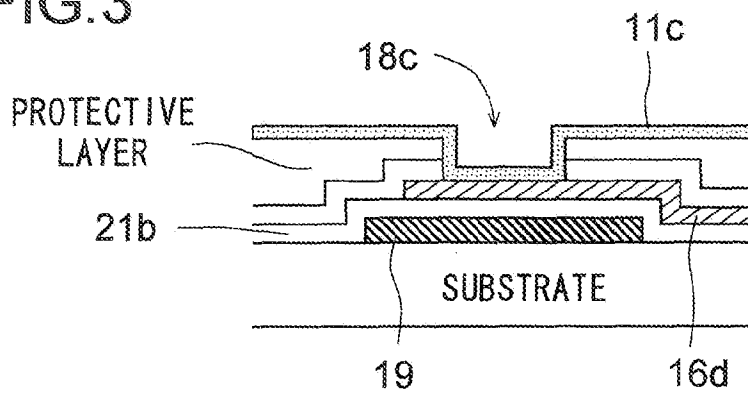


FIG.4

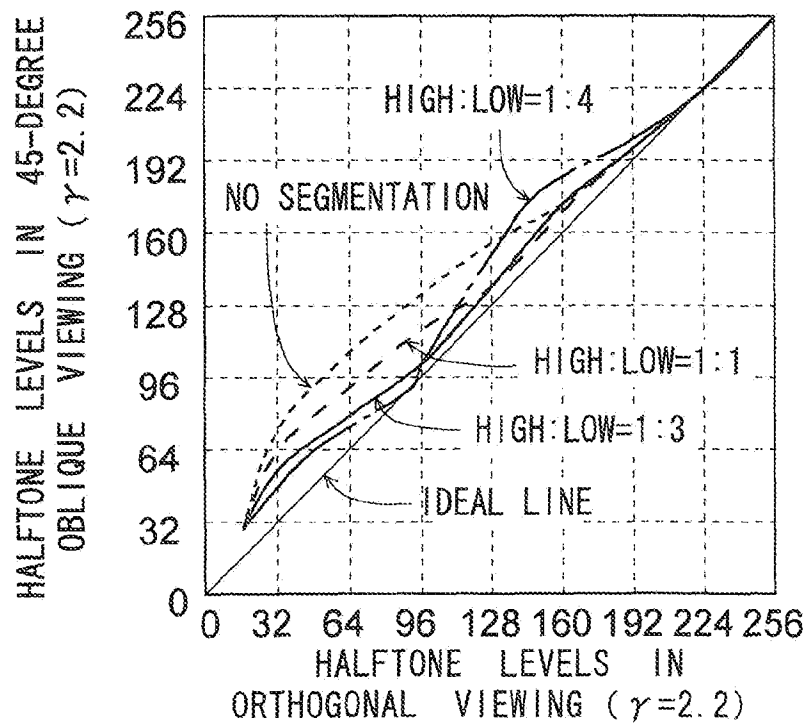


FIG.5

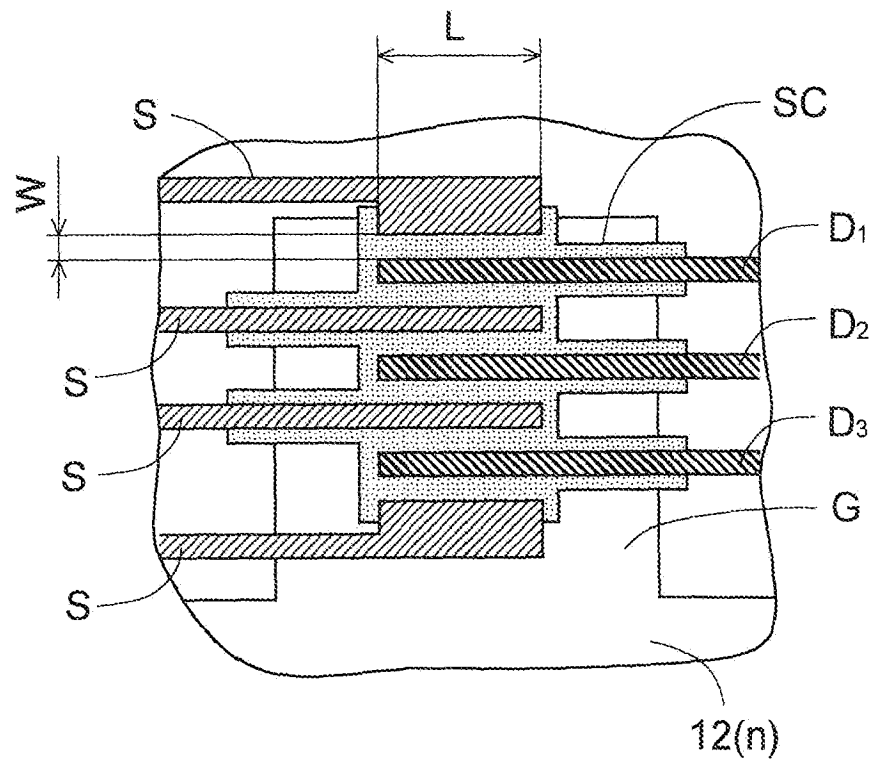


FIG.6

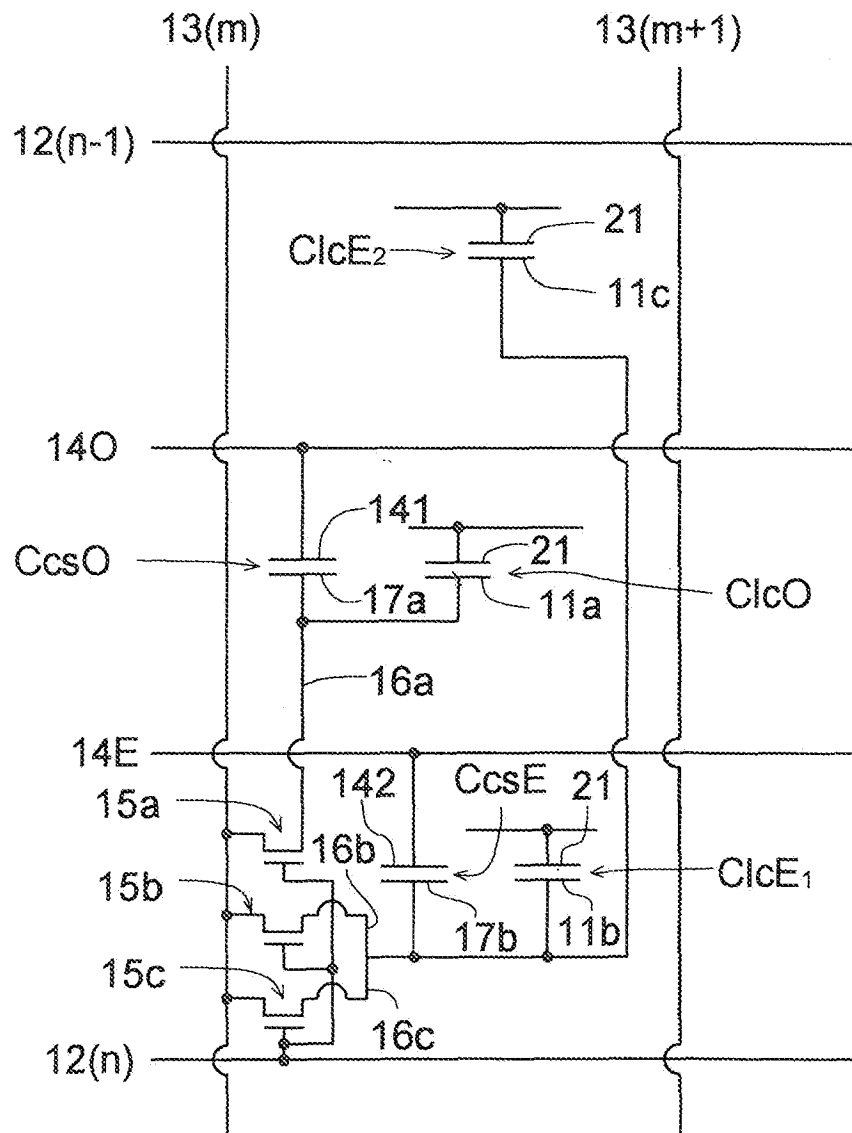


FIG.7

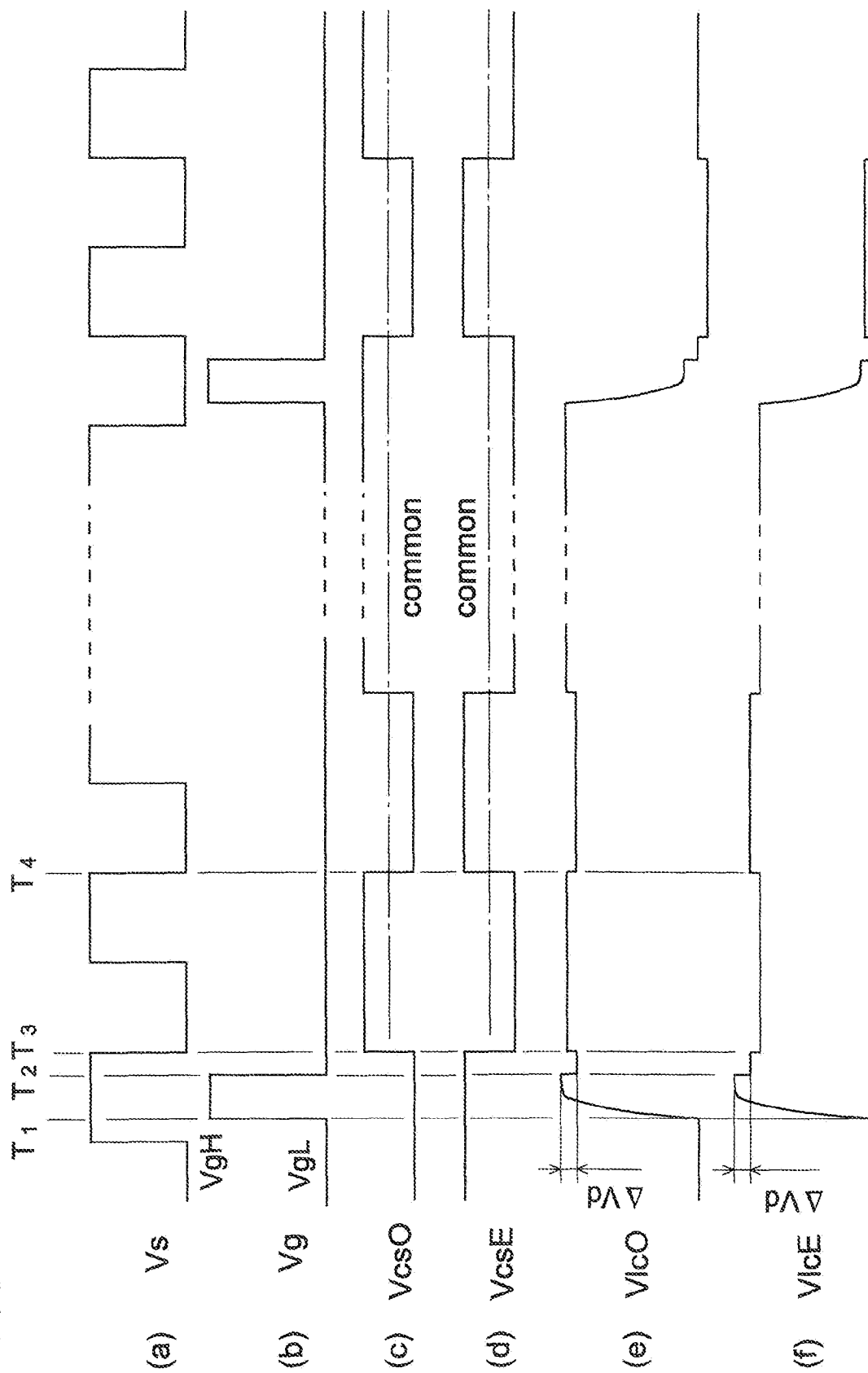


FIG.8

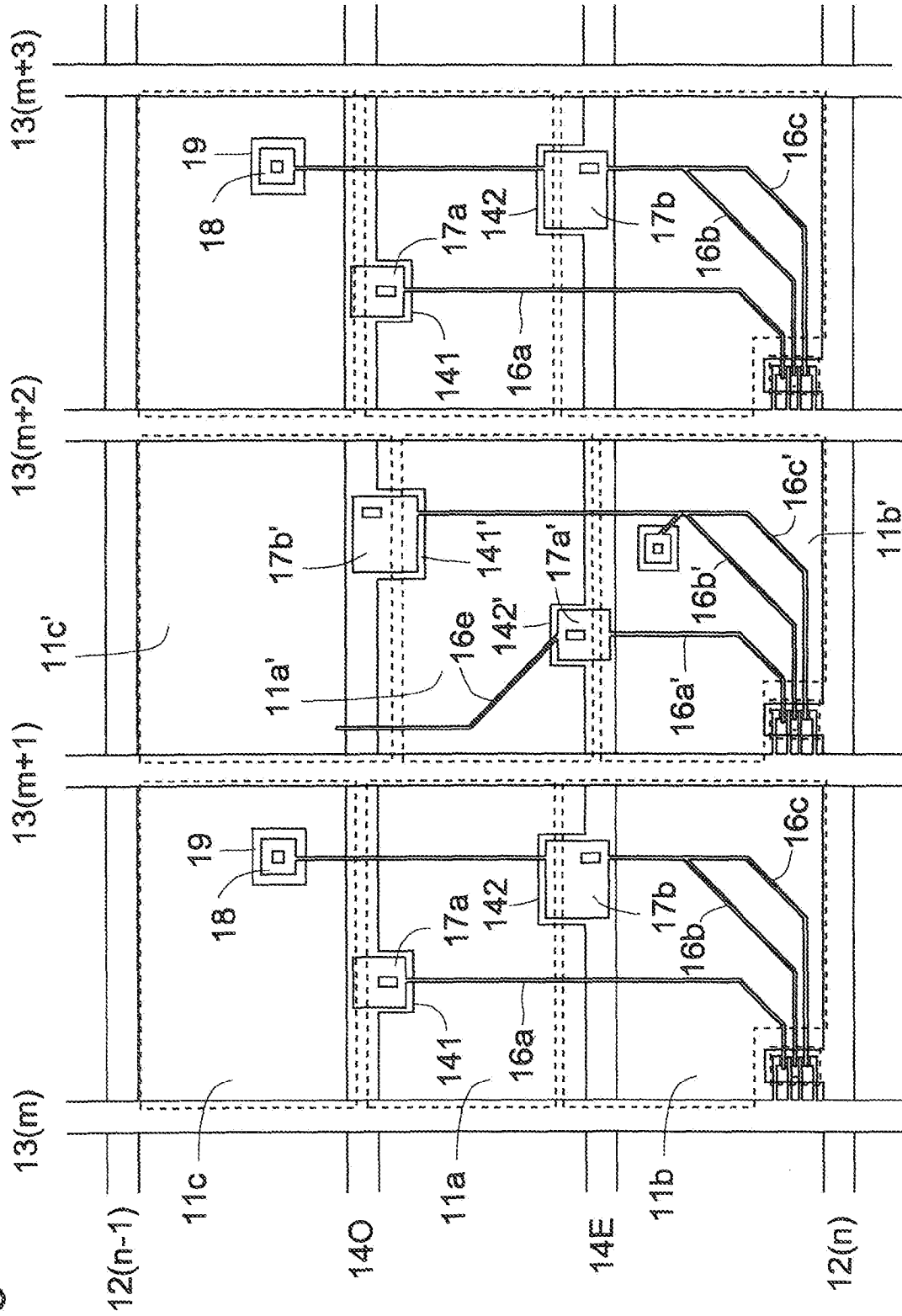
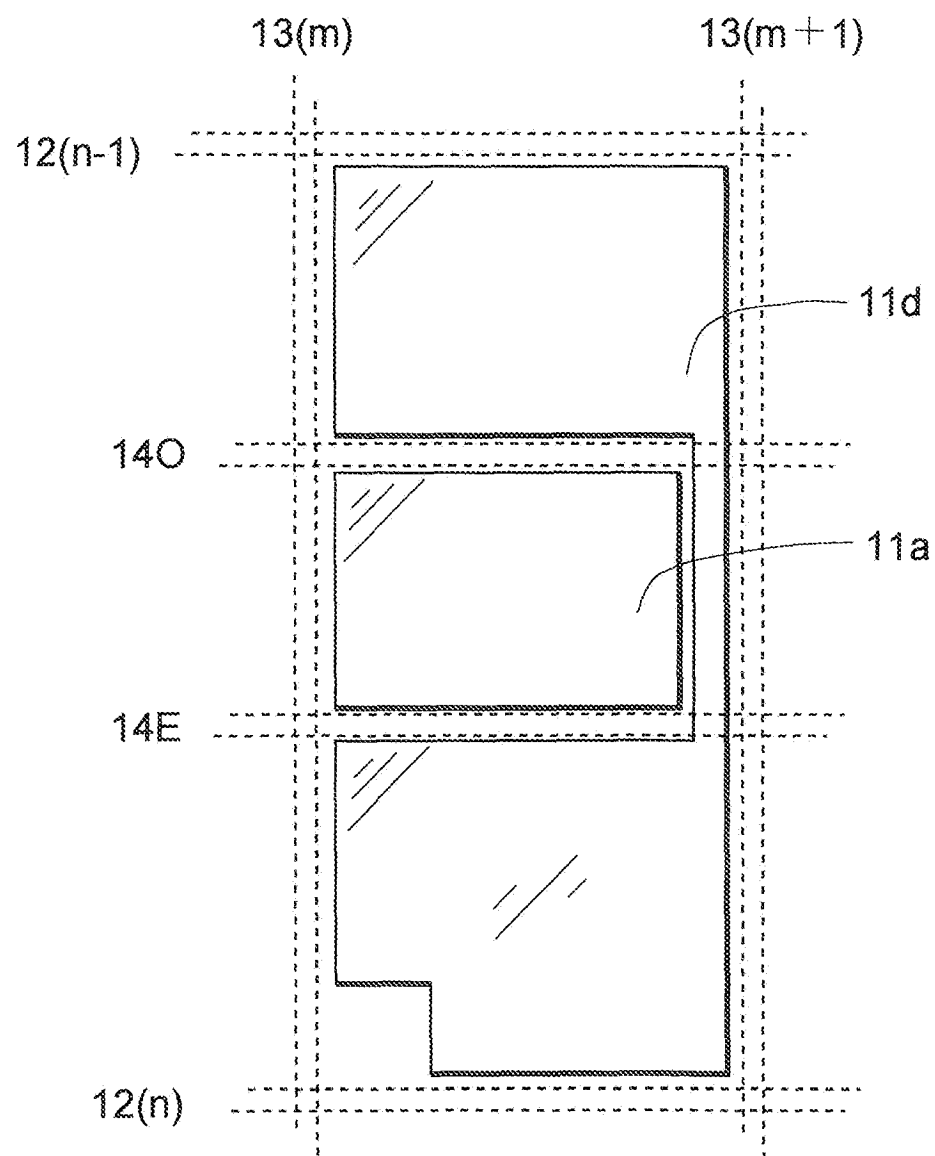


FIG.9



REFERENCES CITED IN THE DESCRIPTION

This list of references cited by the applicant is for the reader's convenience only. It does not form part of the European patent document. Even though great care has been taken in compiling the references, errors or omissions cannot be excluded and the EPO disclaims all liability in this regard.

Patent documents cited in the description

- JP H11242225 A [0004]
- JP H10186330 A [0004]
- JP S63021907 B [0004]
- JP 2004078157 A [0005]
- JP H6332009 A [0005]
- JP 2004062146 A [0005] [0036]

| | | | |
|----------------|---|---------|------------|
| 专利名称(译) | 液晶显示器 | | |
| 公开(公告)号 | EP2230551A2 | 公开(公告)日 | 2010-09-22 |
| 申请号 | EP2010167600 | 申请日 | 2005-10-04 |
| [标]申请(专利权)人(译) | 夏普株式会社 | | |
| 申请(专利权)人(译) | 夏普株式会社 | | |
| 当前申请(专利权)人(译) | 夏普株式会社 | | |
| [标]发明人 | TAKEUCHI MASANORI OHTSUBO TOMOKAZU TSUBATA TOSHIHIDE | | |
| 发明人 | TAKEUCHI, MASANORI OHTSUBO, TOMOKAZU TSUBATA, TOSHIHIDE | | |
| IPC分类号 | G02F1/1343 G02F1/1362 G09G3/36 | | |
| CPC分类号 | G02F1/13624 G02F1/134336 G02F1/136213 G02F2001/134345 G09G3/3648 G09G2300/0443 G09G2300/0447 G09G2300/0876 G09G2320/0276 | | |
| 优先权 | 2004293218 2004-10-06 JP | | |
| 其他公开文献 | EP2230551A3 | | |
| 外部链接 | Espacenet | | |

摘要(译)

液晶显示器包括沿行方向延伸的多条扫描线 (12)，沿列方向延伸的多条信号线 (13) 和多个像素 (10)。多个像素中的每一个具有沿列方向布置的亮子像素 (10a) 和暗子像素 (10b, 10c)，处于中间半色调状态的亮子像素具有比暗淡更高的亮度级别子像素。亮子像素具有亮子像素电极 (11a)，暗子像素具有暗子像素电极 (11b, 11c)。提供连接导体 (16b, 16c, 16d, 17b) 并将昏暗的子像素电极 (10c) 连接到晶体管 (15b, 15c) 的漏电极。在与扫描线平行的扫描线的相邻 (12 (n-1)，12 (n)) 之间设置两个辅助电容导体 (140, 14E)，并且连接导体与两个辅助电容导体重叠。

FIG. 1

