

(19)



(11)

EP 1 783 543 A1

(12)

EUROPEAN PATENT APPLICATION

(43) Date of publication:
09.05.2007 Bulletin 2007/19

(51) Int Cl.:
G02F 1/1343^(2006.01) G02F 1/1335^(2006.01)
G02F 1/1333^(2006.01)

(21) Application number: **06022840.0**

(22) Date of filing: **02.11.2006**

(84) Designated Contracting States:
AT BE BG CH CY CZ DE DK EE ES FI FR GB GR HU IE IS IT LI LT LU LV MC NL PL PT RO SE SI SK TR
Designated Extension States:
AL BA HR MK YU

(72) Inventors:
• **Morimoto, Masateru**
c/o Hitachi Displays, Ltd.
Chiba-ken 297-8622 (JP)
• **Miyazawa, Toshio**
c/o Hitachi Displays, Ltd.
Chiba-ken 297-8622 (JP)
• **Hirota, Shoichi**
c/o Hitachi Ltd., Int. Prop. Group
Chiyoda-ku
Tokyo 100-8220 (JP)

(30) Priority: **07.11.2005 JP 2005322049**

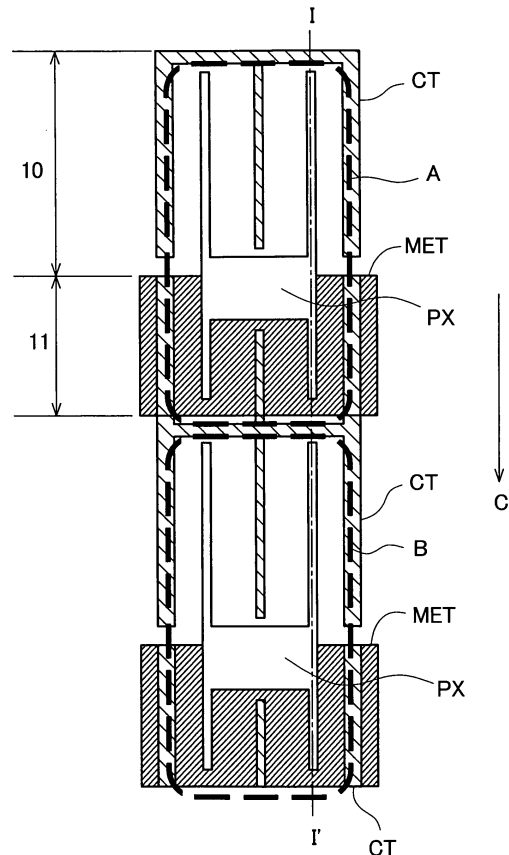
(71) Applicant: **Hitachi Displays, Ltd.**
Mobara-shi,
Chiba-ken (JP)

(74) Representative: **Beetz & Partner**
Steinsdorfstrasse 10
80538 München (DE)

(54) **Transflective liquid crystal display device**

(57) The present invention provides an IPS-type transflective liquid crystal display device in which the contrast is not inverted between a transmissive portion (10) and a reflective portion (11). The transflective liquid crystal display device includes a liquid crystal display panel having a pair of substrates (SUB1, SUB2) and liquid crystal (LC) which is sandwiched between the pair of substrates (SUB1, SUB2), wherein the liquid crystal display panel includes a plurality of sub-pixels (A, B), each of which includes a transmissive portion (10) and a reflective portion (11), each sub-pixel (A, B) of the plurality of sub-pixels includes a pixel electrode (PX) which is formed on one substrate (SUB1) and a counter electrode (CT) which is formed on the same substrate (SUB1), and an electric field is generated between the pixel electrodes (PX) and the counter electrodes (CT), thus driving the liquid crystal (LC). Further, each sub-pixel (A, B) is configured such that the pixel electrode (PX) is formed in common with respect to the transmissive portion (10) and the reflective portion (11) and the counter electrode is formed independently with respect to the transmissive portion (10) and the reflective portion (11).

FIG. 2



EP 1 783 543 A1

Description

BACKGROUND OF THE INVENTION

[0001] The present invention relates to a transfective liquid crystal display device, and more particularly to an in-plane-switching(IPS)-type transfective liquid crystal display device.

[0002] Transfective liquid crystal display devices which have a transmissive portion and a reflective portion within one sub-pixel have been used as displays for portable digital devices and equipments.

[0003] Such transfective liquid crystal display devices adopt the vertical electric field method in which an electric field is applied to a liquid crystal sandwiched between a pair of substrates in the direction perpendicular to the planes of the pair of substrates for driving the liquid crystal. Further, to make the characteristics of the transmissive portion and the reflective portion match each other, a stepped portion is provided between the transmissive portion and the reflective portion, and a phase difference plate is arranged between a polarizer and the liquid crystal layer.

[0004] As a type of liquid crystal display device, there have been known IPS-type liquid crystal display devices. In these IPS-type liquid crystal display devices, pixel electrodes (PX) and counter electrodes (CT) are formed on the same substrate, and an electric field is generated between the pixel electrodes (PX) and the counter electrodes (CT) so as to rotate the liquid crystal in the plane of the substrate thus controlling the contrast. Accordingly, the IPS-type liquid crystal display devices have the characteristic that the gradation of a display image is not inverted even when the screen is viewed obliquely.

[0005] To make use of this characteristic, a constitution of the transfective liquid crystal display device using the IPS-type liquid crystal display mode has been proposed in JP-A-2003-344837 (patent document 1), for example.

[0006] Further, as a driving method of the IPS-type liquid crystal display device, driving of counter electrodes for every display line is described in JP-A-2001-194685 (patent document 2) and JP-A-10-31464 (patent document 3), for example.

SUMMARY OF THE INVENTION

[0007] However, as described in the patent document 1, in transfective liquid crystal display devices wherein the IPS-type liquid crystal display mode is used, when the transmissive portion assumes a normally black mode, the reflective portion assumes a normally white mode thus giving rise to the drawback that the contrast is reversed between the transmissive portion and the reflective portion.

[0008] It is the underlying problem of the present invention to overcome the above-mentioned problems of the conventional technique and to provide an IPS-type liquid crystal display device which can prevent the con-

trast from being reversed between a transmissive portion and a reflective portion.

[0009] The above problem is solved according to the independent claims. The dependent claims relate to preferred embodiments of the concept of the present invention.

[0010] The above-mentioned concept of the invention and the advantages and novel features of the invention will become apparent from the following description and the attached drawings.

[0011] The summary of the concept of the present invention, embodiments of which are disclosed in this specification, is as follows.

(1) The present invention provides a transfective liquid crystal display device which includes a liquid crystal display panel having a pair of substrates and a liquid crystal which is sandwiched between the pair of substrates, the liquid crystal display panel including a plurality of sub-pixels each of which includes a transmissive portion and a reflective portion, each sub-pixel of the plurality of sub-pixels including a pixel electrode which is formed on one substrate of the two substrates and a counter electrode which is formed on the same substrate, and an electric field being generated between the pixel electrode and the counter electrode thus driving the liquid crystal, wherein

each sub-pixel is configured such that the pixel electrode is formed in common with respect to the transmissive portion and the reflective portion and the counter electrode is formed independently with respect to the transmissive portion and the reflective portion.

(2) According to a first preferred embodiment of the present invention as defined above, in the inside of each sub-pixel, the potential which is applied to the counter electrode of one of the transmissive portion and the reflective portion is a potential higher than the potential which is applied to the pixel electrode, and the potential which is applied to the counter electrode of another of the transmissive portion and the reflective portion is a potential lower than the potential which is applied to the pixel electrode.

(3) According to another preferred embodiment of the present invention as defined above, the transmissive portion has a normally-black characteristic which performs a black display in a state that no voltage is applied, and the reflective portion has normally-white characteristic which performs a white display in a state that no voltage is applied.

(4) According to a further preferred embodiment of the present invention as defined above, the counter electrodes are independently driven for every 1 display line.

(5) In accordance with still a further preferred embodiment of the present invention as defined above, assuming that two neighboring display lines are con-

stituted of one display line and another display line, reference voltages which differ from each other are applied to the counter electrodes of the transmissive portions of the respective sub-pixels on the one display line and the counter electrodes of the reflective portions of the respective sub-pixels on the one display line, and

the same reference voltage is applied to the counter electrodes of the reflective portions of the respective sub-pixels on the one display line and the counter electrodes of the transmissive portions of the respective sub-pixels on the other display line.

(6) According to still a further preferred embodiment of the present invention as defined above, and as a further preferred embodiment of the above embodiment (5), the counter electrodes are driven independently for every 1 display line.

(7) In the embodiments (4) or (5), the counter electrode in the reflective portion in each sub-pixel on the one display line and the counter electrode in the transmissive portion in each sub-pixel on the other display line are preferably formed of a common electrode.

(8) According to a further preferred embodiment of the present invention as defined above under (1), and in any one of the embodiments (2) to (7), the pixel electrodes in the transmissive portion and the pixel electrodes in the reflective portion preferably differ from each other in the intervals of the electrodes.

(9) According to a further preferred embodiment of the present invention as defined above under (1), and in any one of the embodiments (2) to (7), the pixel electrode in the reflective portion is preferably made of metal which exhibits a reflectance of 70 % or less.

(10) According to a further preferred embodiment of the present invention as defined above under (1), and in any one of the embodiments (2) to (7), the pixel electrodes in the reflective portion are formed of a transparent electrode, the reflective portion includes a reflective film, and the reflective film has a slit at a position where the slit is overlapped to the pixel electrode in the reflective portion.

(11) According to a further preferred embodiment of the present invention as defined above under (1), and in any one of the embodiments (2) to (7), another substrate out of the pair of substrates has a light blocking film at a position where the other substrate faces the pixel electrode in the reflective portion in an opposed manner.

(12) According to a further preferred embodiment of the present invention as defined above under (1), and in any one of the embodiments (2) to (11), the counter electrode is formed of a strip-like electrode, an interlayer insulation film which is formed on the counter electrode of the strip-like electrode, and the pixel electrode is formed on the interlayer insulation

film.

(13) According to a further preferred embodiment of the present invention as defined above under (1), and in any one of the embodiments (2) to (12), assuming n as an integer of 1 or more, in synchronism with the writing of a video voltage to the pixel electrodes in the n th display line, the same reference voltage is applied to the counter electrodes of the reflective portions in the n th display line and the counter electrodes of the transmissive portions in the $(n+1)$ th display line.

(14) According to a further preferred embodiment of the present invention as defined above under (1), and in any one of the embodiments (2) to (12), assuming n as an integer of 1 or more, in synchronism with the writing of a video voltage to the pixel electrodes in the n th display line, the same reference voltage is applied to the counter electrodes of the transmissive portions in the n th display line and the counter electrodes of the reflective portions in the $(n+1)$ th display line.

(15) According to a further preferred embodiment of the present invention as defined above under (1), and in any one of the embodiments (2) to (12), assuming n as an integer of 1 or more, in synchronism with the writing of a video voltage to the pixel electrodes in the n th display line, the same reference voltage is applied to the counter electrodes of the reflective portions in the $(n+1)$ th display line and the counter electrodes of the transmissive portions in the $(n+2)$ th display line.

(16) According to a further preferred embodiment of the present invention as defined above under (1), and in any one of the embodiments (2) to (12), assuming n as an integer of 1 or more, in synchronism with the writing of a video voltage to the pixel electrodes in the n th display line, the same reference voltage is applied to the counter electrodes of the transmissive portions in the $(n+1)$ th display line and the counter electrodes of the reflective portions in the $(n+2)$ th display line.

[0012] Here, the embodiments (2) to (16) merely constitute examples, and the present invention is not limited by these examples.

[0013] In the following, the advantageous effects obtained by the present invention and the embodiments thereof disclosed in this specification will be briefly explained.

[0014] According to the present invention, it is possible to provide an IPS-type transmissive liquid crystal display device in which the contrast is not inverted between the transmissive portions and the reflective portions.

BRIEF DESCRIPTION OF THE DRAWINGS

[0015]

Fig. 1 is a cross-sectional view of an essential part showing the schematic constitution of a sub-pixel of a transmissive liquid crystal display device according to an embodiment 1 of the present invention;

Fig. 2 is a plan view showing the electrode structure of the sub-pixel of the transmissive liquid crystal display device according to the embodiment 1 of the present invention;

Fig. 3 is a view showing reference voltages which are applied to a counter electrode (CT) in a transmissive portion and a counter electrode (CT) in a reflective portion within the sub-pixel in the transmissive liquid crystal display device according to the embodiment 1 of the present invention;

Fig. 4 is a graph showing the voltage-brightness characteristics of the transmissive portion and the reflective portion of the transmissive liquid crystal display device according to the embodiment 1 of the present invention;

Fig. 5 is a plan view showing the electrode structure of a sub-pixel of a transmissive liquid crystal display device according to a modification of the embodiment 1 of the present invention;

Fig. 6 is a cross-sectional view of an essential part showing the schematic constitution of a sub-pixel of a transmissive liquid crystal display device according to an embodiment 2 of the present invention;

Fig. 7 is a plan view showing the electrode structure of the sub-pixel of the transmissive liquid crystal display device according to the embodiment 2 of the present invention;

Fig. 8 is a plan view showing the electrode structure of a sub-pixel of a transmissive liquid crystal display device according to a modification of the embodiment 2 of the present invention;

Fig. 9 is a view for explaining one example of a method and circuit for driving the transmissive liquid crystal display devices of the respective embodiments of the present invention;

Fig. 10 is a view for explaining another example of a method and circuit for driving the transmissive liquid crystal display devices of the respective embodiments of the present invention;

Fig. 11 is a cross-sectional view of an essential part showing the schematic constitution of 1 sub-pixel of a conventional transmissive liquid crystal display device;

Fig. 12 is a plan view showing the electrode structure of 1 sub-pixel of the conventional transmissive liquid crystal display device; and

Fig. 13 is a graph showing the voltage-brightness characteristic of a transmissive portion 10 and a reflective portion 11 of the conventional transmissive liquid crystal display device.

DESCRIPTION OF THE PREFERRED EMBODIMENTS

[0016] Embodiments according to the present inven-

tion are explained hereinafter in conjunction with the drawings.

[0017] Here, in all drawings for explaining the embodiments, parts having identical functions are given same numerals and their repeated explanation is omitted.

Embodiment 1

[0018] Fig. 1 is a cross-sectional view of an essential part showing the schematic constitution of a sub-pixel of a transmissive liquid crystal display device according to an embodiment 1 of the present invention, while Fig. 2 is a plan view showing the electrode structure of the sub-pixel of the transmissive liquid crystal display device according to the embodiment 1 of the present invention. Here, Fig. 1 is a cross-sectional view taken along a line I-I' in Fig. 2.

[0019] Hereinafter, the transmissive liquid crystal display device of this embodiment is explained in conjunction with Fig. 1 and Fig. 2.

[0020] As shown in Fig. 1, in this embodiment, a pair of glass substrates (SUB1, SUB2) are provided in such a manner that a liquid crystal layer (LC) is sandwiched between the pair of glass substrates (SUB1, SUB2).

[0021] On one glass substrate (SUB1), for example, a reflective layer (MET) made of Al, an interlayer insulation film (INS) which is formed on the reflective layer (MET), pixel electrodes (PX) and counter electrodes (CT) which are formed on the interlayer insulation film (INS), and an orientation film (AL1) which is formed on the pixel electrodes (PX) and the counter electrodes (CT) are formed. Here, the interlayer insulation film (INS) may be formed of two or more layers.

[0022] Further, another glass substrate (SUB2) is provided with a step forming layer (MR) and an orientation film (AL2) which is formed on the step forming layer (MR).

[0023] Further, outside the glass substrates (SUB1, SUB2), polarizers (PL1, PL2) are arranged. Here, in Fig. 1, symbol TM indicates light of a transmissive portion and RM indicates light of a reflective portion.

[0024] Here, a region where the reflective layer (MET) and the step forming layer (MR) are formed constitutes the reflective portion 11, and other regions constitute the transmissive portion 10.

[0025] Further, as shown in Fig. 2, the pixel electrodes (PX) and the counter electrodes (CT) are respectively formed in a comb-teeth shape, wherein respective comb-teeth portions of the pixel electrodes (PX) and the counter electrodes (CT) are formed at predetermined pitches to be meshed with each other. Here, in Fig. 2, portions which are respectively indicated by dotted frames A, B respectively indicate 1 sub-pixel.

[0026] Here, in Fig. 1, Fig. 2 and other corresponding drawings, although an active matrix is constituted of a plurality of scanning lines, a plurality of video lines which intersect a plurality of scanning lines, and active elements (for example, thin film transistors) which are formed corresponding to respective pixels, such a constitution is

omitted from the drawings. Further, although contact holes and color filters are also formed when necessary, these parts are also omitted from the drawings. Further, although the counter electrodes (CT) are electrically connected with the counter electrodes (CT) of a sub-pixel of a neighboring column not shown in the drawings, the connection structure is also omitted from the drawings.

[0027] Fig. 11 is a cross-sectional view of an essential part showing the schematic constitution of 1 sub-pixel of a conventional transmissive liquid crystal display device, while Fig. 12 is a plan view showing the electrode structure of 1 sub-pixel of the conventional transmissive liquid crystal display device. Here, Fig. 11 is a cross-sectional view taken along a line I-I' in Fig. 12.

[0028] As shown in Fig. 11 and Fig. 12, the conventional transmissive liquid crystal display device has substantially the same constitution as the reflective liquid crystal display device of this embodiment.

[0029] Fig. 13 is a graph showing the voltage-brightness characteristic of a transmissive portion 10 and a reflective portion 11 of the conventional transmissive liquid crystal display device. In Fig. 13, the symbol V indicates the potential difference between the pixel electrodes (PX) and the counter electrodes (CT), and a symbol B indicates brightness.

[0030] As can be understood from the graph, the reflective portion 11 assumes a normally white state, that is, a state in which the reflective portion 11 performs a white display (a state in which light is emitted brightly) when a voltage is not applied to the liquid crystal layer (LC) ($V=0$, that is, potentials of the counter electrodes (CT) and the pixel electrodes (PX) are equal), while the transmissive portion 10 assumes a normally black state, that is, transmissive portion 10 performs a black display in which the voltage is not applied to the liquid crystal layer (LC) ($V=0$).

[0031] Then, when the potential difference between the pixel electrodes (PX) and the counter electrodes (CT) is increased, the transmissive portion 10 becomes brighter and the reflective portion 11 becomes darker. In this manner, the conventional transmissive liquid crystal display device has the drawback that the contrast is reversed between the transmissive portion 10 and the reflective portion 11.

[0032] To the contrary, as can be readily understood by comparing Fig. 2 with Fig. 12, according to this embodiment, within 1 sub-pixel, although the pixel electrodes (PX) are used in common by the transmissive portion 10 and the reflective portion 11, the counter electrodes (CT) are respectively independently provided to the transmissive portion 10 and the reflective portion 11. That is, in this embodiment, the counter electrodes (CT) are divided in two for transmissive portion and reflective portion respectively.

[0033] Here, Fig. 2 shows the constitution in which with respect to two neighboring display lines, the counter electrode (CT) of the reflective portion 11 on one display line (display line having the sub-pixel indicated by symbol A

in Fig. 2) and the counter electrode (CT) of the transmissive portion 10 on another display line (display line having the sub-pixel indicated by symbol B in Fig. 2) are formed of a common electrode. Further, the arrow C in Fig. 2 indicates the scanning direction.

[0034] Then, as shown in Fig. 3, in this embodiment, within 1 sub-pixel, reference voltages which differ from each other are applied to the counter electrodes (CT) in the transmissive portion 10 and the counter electrodes (CT) in the reflective portion 11.

[0035] For example, in the sub-pixel indicated by symbol A in Fig. 2, the reference voltage (V-CT-H) of High level (hereinafter referred to as H level) is applied to the counter electrodes (CT) in the transmissive portion 10, while the reference voltage (V-CT-L) of Low level (hereinafter referred to as L level) is applied to the counter electrodes (CT) in the reflective portion 11. Further, in the sub-pixel indicated by symbol A in Fig. 2, a video voltage (V-PX) of negative polarity is applied to the pixel electrodes (PX) as viewed at the transmissive portion 10, while the video voltage (V-PX) of positive polarity is applied to the pixel electrodes (PX) as viewed at the reflective portion 11. Here, the negative polarity implies that the potential of the pixel electrodes (PX) is lower than the potential of the counter electrodes (CT), irrespective of whether the potential of the pixel electrodes (PX) is larger or smaller than 0V or not. In the same manner, the positive polarity implies that the potential of the pixel electrodes (PX) is higher than the potential of the counter electrodes (CT), irrespective of whether the potential of the pixel electrodes (PX) is larger or smaller than 0V or not.

[0036] In the same manner, in the sub-pixel indicated by symbol B in Fig. 2, the reference voltage (V-CT-L) of L level is applied to the counter electrodes (CT) in the transmissive portion 10, while the reference voltage (V-CT-H) of H level is applied to the counter electrodes (CT) in the reflective portion 11. Further, in the sub-pixel indicated by symbol B in Fig. 2, a video voltage (V-PX) of positive polarity is applied to the pixel electrodes (PX) as viewed at the transmissive portion 10, while the video voltage (V-PX) of negative polarity is applied to the pixel electrodes (PX) as viewed at the reflective portion 11.

[0037] Here, the video voltage (V-PX) which is applied to the pixel electrodes (PX) is the potential between the reference voltage (V-CT-H) of H level and the reference voltage (V-CT-L) of L level.

[0038] Accordingly, with respect to the sub-pixels indicated by A, B in Fig. 2, the potential difference (V_a in Fig. 3) between the pixel electrodes (PX) and the counter electrodes (CT) is increased in the transmissive portion 10, while the potential difference (V_b in Fig. 3) between the pixel electrodes (PX) and the counter electrodes (CT) is decreased in the reflective portion 11.

[0039] Accordingly, when the potential shown in Fig. 3 is applied, the potential difference V_a between the pixel electrodes (PX) and the counter electrodes (CT) is large in the transmissive portion 10 and hence, the transmis-

sive portion 10 becomes bright. At this point of time, the potential difference V_b between the pixel electrodes (PX) and the counter electrodes (CT) is small in the reflective portion 11 and hence, the reflective portion 11 becomes bright in the same manner.

[0040] Then, in the transmissive portion 10, when the potential of the pixel electrodes (PX) (the potential of the video signal) is changed to a value different from the potential shown in Fig. 3 so as to further increase the potential difference V_a between the pixel electrodes (PX) and the counter electrodes (CT), in the reflective portion 11, the potential difference V_b between the pixel electrodes (PX) and the counter electrodes (CT) is further decreased and hence, both of the transmissive portion 10 and the reflective portion 11 become further brighter.

[0041] On the other hand, in the transmissive portion 10, when the potential of the pixel electrodes (PX) (the potential of the video signal) is changed to a value different from the potential shown in Fig. 3 so as to decrease the potential difference V_a between the pixel electrodes (PX) and the counter electrodes (CT), in the reflective portion 11, the potential difference V_b between the pixel electrodes (PX) and the counter electrodes (CT) is increased and hence, both of the transmissive portion 10 and the reflective portion 11 become dark.

[0042] Fig. 4 is a graph showing the voltage-brightness characteristic of the transmissive portion 10 and the reflective portion 11 of the transmissive liquid crystal display device of this embodiment. Here, in Fig. 4, the voltage V indicates the potential difference between the pixel electrodes (PX) in the transmissive portion 10 and the counter electrodes (CT) in the transmissive portion 10, and symbol B indicates brightness. In the graph shown in Fig. 4 which shows the characteristic of the transmissive portion 10, the voltage V of the transmissive portion 10 is taken on the abscissa axis, and the brightness B of the transmissive portion 10 is taken on the ordinate axis. Here, with respect to the characteristic of the reflective portion 11, the voltage V of the transmissive portion 10 is taken on the abscissa axis, and the brightness B of the reflective portion 11 is taken on the ordinate axis.

[0043] The characteristic of the transmissive portion 10 shown in Fig. 4 corresponds to a case in which the voltage V of the transmissive portion 10 shown in Fig. 13 is changed from 0 to V_1 . The characteristic of the reflective portion 11 shown in Fig. 4 corresponds to a case in which the voltage V of the reflective portion 11 shown in Fig. 13 is reversed laterally with respect to a case in which the voltage V of the transmissive portion 11 is changed from 0 to V_1 .

[0044] In this manner, according to this embodiment, within 1 sub-pixel, the counter electrodes (CT) are divided in two, that is, are divided into the counter electrodes (CT) of the transmissive portion 10 and the counter electrodes (CT) of the reflective portion 11, the reference voltages having opposite polarities from each other (here, the opposite polarities implying that when one counter electrode (CT) assumes H level, another counter elec-

trode (CT) assumes L level) are applied and hence, it is possible to prevent the inversion of contrast between the transmissive portions 10 and the reflective portions 11. That is, according to the present invention, even when the transmissive portions 10 assume a normally black mode and the reflective portions 11 assume a normally white mode, by arranging the voltage applied to the counter electrodes (CT) of the reflective portions 11, it is possible to overcome the drawback on the inversion of contrast.

[0045] Here, in performing the AC driving of the liquid crystal, it is desirable to invert the polarity of the potential applied to the counter electrodes (CT) for every predetermined frame (for example, for every 1 frame) (when the potential of H level is applied, the potential is changed to L level, while when the potential of L level is applied, the potential is changed to H level). Here, the potential of the pixel electrodes (PX) is also properly changed to acquire the predetermined brightness.

[0046] Here, as a result of a simulation, to obtain the sufficient difference in contrast in this embodiment, it is desirable to set the retardation ($\Delta n d$) of the liquid crystal layer (LC) of the reflective portion 11 to a value which satisfies the condition

$$100 \text{ nm} \leq \Delta n d \leq 200 \text{ nm}.$$

[0047] Further, in the IPS-type liquid crystal display devices, it is difficult to apply the electric field above the pixel electrodes (PX) and hence, when the reflective portions 11 assume the normally white mode as in the case of this embodiment, portions of the reflective portions 11 corresponding to the pixel electrodes (PX) always exhibit the white display thus giving rise to the possibility that the contrast is lowered. Further, it is also considered that a similar drawback also occurs above the counter electrodes (CT) in the reflective portion 11.

[0048] Accordingly, it is desirable to adopt the following constitutions to enhance the contrast ratio of the reflective portion 11.

- (1) The comb-teeth portions of at least one of or preferably both of the pixel electrodes (PX) of the reflective portion 11 and the counter electrodes (CT) of the reflective portion 11 are made of metal having low reflectance. It is desirable to set the reflectance to a value equal to or less than 70%. For example, the comb-teeth portions may be formed of Cr. Here, in place of forming the comb-teeth portions using a metal having a low reflectance, the reflectance may be lowered by making use of interference by adjusting the film thickness of the insulation film above the electrodes. The reflectance may be also lowered by making use of interference by forming the electrode using a multi-layered film, by constituting the upper layer of the electrode using a transparent electrode,

and by adjusting the film thickness of the transparent electrode.

(2) The comb-teeth portions of at least one of or preferably both of the pixel electrodes (PX) of the reflective portion 11 and the counter electrodes (CT) of the reflective portion 11 are made of a transparent electrode, and a reflective layer (MET) is not provided to portions of the reflective portion 11 which are overlapped to the comb-teeth portions. For example, the reflective layer (MET) has slits at positions where the slit is overlapped to the electrodes of the reflective portion 11.

(3) At positions of the other substrate (SUB2) which correspond to comb-teeth portions of at least one or preferably both of the pixel electrodes (PX) of the reflective portion 11 and the counter electrodes (CT) of the reflective portion 11, light blocking films are arranged.

[0049] Further, as shown in Fig. 5, by setting the distance between the comb-teeth of the pixel electrodes (PX) of the reflective portion 11 and the counter electrodes (CT) of the reflective portion 11 narrower or wider than the distance between the comb-teeth of the transmissive portion 10, it is possible to approximate gamma characteristic of the transmissive portion 10 and the reflective portion 11.

[0050] Here, Fig. 5 is a plan view showing the electrode structure of the sub-pixel of the transmissive liquid crystal display device according to a modification of the embodiment 1 of the present invention.

Embodiment 2

[0051] Fig. 6 is a cross-sectional view of an essential part showing the schematic constitution of a sub-pixel of a transmissive liquid crystal display device according to an embodiment 2 of the present invention, and Fig. 7 is a plan view showing the electrode structure of the sub-pixel of the transmissive liquid crystal display device of this embodiment. Here, Fig. 6 is a cross-sectional view taken along the line I-I' in Fig. 7.

[0052] In the previously mentioned embodiment 1, the pixel electrodes (PX) and the counter electrodes (CT) in the transmissive portion 10 and the reflective portion 11 are formed on the same layer on one substrate (SUB1) and, at the same time, both of the pixel electrodes (PX) and the counter electrodes (CT) are not overlapped to each other.

[0053] On the other hand, this embodiment differs from the above-mentioned embodiment with respect to the point that the pixel electrodes (PX) and the counter electrodes (CT) of the transmissive portion 10 and the reflective portion 11 are formed on different layers on one substrate (SUB1).

[0054] In this embodiment, on the counter electrodes (CT) of the transmissive portion 10 and the reflective portion 11, an interlayer insulation film (INS) is formed and,

at the same time, the pixel electrodes (PX) are formed on the interlayer insulation film (INS). Further, a reflective layer (MET) is formed on the counter electrodes (CT) of the reflective portion 11.

[0055] Further, in this embodiment, the counter electrodes (CT) of the transmissive portion 10 and the reflective portion 11 are formed in a planar shape. The pixel electrodes (PX) are formed into a rectangular shape having a slit 30 of a closed shape in the inside thereof. However, the pixel electrodes (PX) are not limited to the rectangular shape and may take an arbitrary shape.

[0056] Here, the pixel electrodes (PX) may be formed in a comb-teeth shape which has slits of a shape which opens a portion thereof in the same manner as the previously mentioned embodiment. Further, in this embodiment and previously mentioned embodiment, the pixel electrodes (PX) are configured to have linear portions.

[0057] Further, the pixel electrodes (PX) and the counter electrodes (CT) are overlapped to each other by way of the interlayer insulation film (INS) thus forming a holding capacitance therebetween. Here, the interlayer insulation film (INS) is not limited to the one-layer structure and may be formed of two or more layers.

[0058] Also in this embodiment, within 1 sub-pixel, the planar counter electrodes (CT) are divided in two, that is, are divided into the counter electrodes (CT) of the transmissive portion 10 and the counter electrodes (CT) of the reflective portion 11, the reference voltages having opposite polarities from each other (here, the opposite polarities implying that when one counter electrode (CT) assumes H level, another counter electrode (CT) assumes L level) are applied and hence, it is possible to prevent the inversion of contrast between the transmissive portion 10 and the reflective portion 11.

[0059] In this case, as a result of a simulation, also in this embodiment, to obtain the sufficient contrast difference, it is desirable to set the retardation (Δnd) of the liquid crystal layer (LC) of the reflective portion 11 to a value which satisfies the condition $100 \text{ nm} \leq \Delta nd \leq 200 \text{ nm}$.

[0060] Further, as shown in Fig. 8, by setting the distance between comb-teeth of the pixel electrodes (PX) of the reflective portion 11 narrower or wider than the distance between the comb-teeth of the transmissive portion 10, it is possible to approximate the gamma characteristic of the transmissive portion 10 and the reflective portion 11 to each other.

[0061] Here, Fig. 8 is a plan view showing the electrode structure of the sub-pixel of the transmissive liquid crystal display device according to a modification of the embodiment 2 of the present invention.

[0062] Further, in either one of this embodiment and the previously mentioned embodiment, the comb-teeth portions of the pixel electrodes (PX) and the counter electrodes (CT) may be rotated by 90° . Further, to form the pixel electrodes (PX) and the counter electrodes (CT) into a multi-domain, the pixel electrodes (PX) and the counter electrodes (CT) may have a bent structure.

[0063] Further, to enhance the contrast ratio of the reflective portion 11, it is preferable to adopt the structures (1) to (3) explained in conjunction with the embodiment 1. However, the counter electrodes (CT) do not have a comb-teeth shape in this embodiment, the structures (1) to (3) which are explained in conjunction with the embodiment 1 may be adopted with respect to the pixel electrodes (PX).

[0064] A method and circuit for driving the counter electrodes (CT) of the above-mentioned respective embodiments are explained hereinafter.

[0065] Fig. 9 is a view for explaining one example of the driving method of the transmissive liquid crystal display devices of the respective embodiments of the present invention. Here, in Fig. 9, symbol SR indicates a shift resistor, symbols G_{n-1} , G_n , G_{n+1} indicate scanning lines (gate lines), symbols VPX_{n-1} , VPX_n , VPX_{n+1} indicate video lines (drain lines or source lines), symbols CT_{n-1} , CT_n , CT_{n+1} indicate counter electrodes, symbols COMA, COMB indicate power source lines, symbol TFT indicates a thin film transistor, symbol CLC indicates liquid crystal capacitances, and symbol Cst indicates a holding capacitance.

[0066] In the example shown in Fig. 9, a scanning signal is applied to the scanning line (G_{n-1}) of the ($n-1$)th display line so as to turn on the gates of the thin film transistors (TFT) of the respective sub-pixels on the ($n-1$)th display line thus writing a video voltage to the pixel electrodes (PX) of the respective sub-pixels via the video lines (VPX_{n-1} , VPX_n , VPX_{n+1}). Here, the reference voltage of H level (V-CT-H) or the reference voltage of L level (V-CT-L) is applied to the counter electrodes (CT_n) of the reflective portion 11 of the respective sub-pixels on the ($n-1$)th display line and the counter electrodes (CT_n) of the transmissive portion 10 of the respective sub-pixels on the n th display line which is the next line from the power source line (COMB).

[0067] Next, a scanning signal is applied to the scanning line (G_n) of the n th display line so as to turn on the gates of the thin film transistors (TFT) of the respective sub-pixels on the n th display line thus writing a video voltage to the pixel electrodes (PX) of the respective sub-pixels via the video lines (VPX_{n-1} , VPX_n , VPX_{n+1}). Here, the reference voltage of L level (V-CT-L) or the reference voltage of H level (V-CT-H) which are reference potentials having polarities opposite to the polarities of the counter electrodes (CT_n) of the 1 preceding line is applied to the counter electrodes (CT_{n+1}) of the reflective portion 11 of the respective sub-pixels on the n th display line and the counter electrodes (CT_{n+1}) of the transmissive portion 10 of the respective sub-pixels on the ($n+1$)th display line which is the next line from the power source line (COMA).

[0068] Due to such operations, the reference voltage of the counter electrodes (CT) of the respective sub-pixels on each display line is determined.

[0069] Accordingly, when the video voltage is written in the pixel electrodes (PX) of the respective sub-pixels

on the n th display line, the potentials of two counter electrodes (CT_n , CT_{n+1}) in the vicinity of the pixel electrodes (PX) of each sub-pixel on the n th display line are always fixed thus ensuring a stable writing.

[0070] Here, when the scanning direction assumes a direction opposite to the direction indicated by the arrow C in Fig. 2, in Fig. 9, the upper side of the pixel electrodes (PX) constitutes the reflective portion 11, and the lower side of the pixel electrodes (PX) constitutes the transmissive portion 10. Then, a scanning signal is applied to the scanning line (G_{n-1}) of the ($n-1$)th display line so as to turn on the gates of the thin film transistors (TFT) of the respective sub-pixels on the ($n-1$)th display line thus writing a video voltage to the pixel electrodes (PX) of the respective sub-pixels via the video lines (VPX_{n-1} , VPX_n , VPX_{n+1}). Here, the reference voltage of H level (V-CT-H) or the reference voltage of L level (V-CT-L) is applied to the counter electrodes (CT_n) of the transmissive portion 10 of the respective sub-pixels on the ($n-1$)th display line and the counter electrodes (CT_n) of the reflective portion 11 of the respective sub-pixels on the n th display line which is the next line from the power source line (COMB).

[0071] Fig. 10 is a view for explaining another example of a method and circuit for driving the transmissive liquid crystal display devices of the respective embodiments of the present invention. Here, in Fig. 10, symbol SR indicates a shift resistor, symbols G_{n-2} , G_{n-1} , G_n , G_{n+1} indicate scanning lines (gate lines), symbols VPX_{n-1} , VPX_n , VPX_{n+1} indicate video lines (drain lines or source lines), symbols CT_{n-1} , CT_n , CT_{n+1} indicate counter electrodes, symbols COMA, COMB indicate power source lines, symbol TFT indicates thin film transistors, symbol CLC indicates liquid crystal capacitances, and symbol Cst indicates holding capacitances.

[0072] In Fig. 9, in synchronism with the scanning signal applied to the scanning line (G_n) of the n th display line, the reference voltage is written in the counter electrodes (CT_n) which are shared in common by the sub-pixels on the n th display line and the sub-pixels on the ($n+1$)th display line. To the contrary, this example shown in Fig. 10 differs from the example shown in Fig. 9 with respect to the point that in synchronism with a scanning signal applied to the scanning line (G_n) on the n th display line, the reference voltage is written in the counter electrodes (CT_{n+1}) which are shared in common by the sub-pixels on the ($n+1$)th display line and the sub-pixels on the ($n+2$)th display line.

[0073] In the example shown in Fig. 10, the gates of thin film transistors (TFT) of the respective sub-pixels on the ($n-1$)th display line are turned on thus writing a video voltage to the pixel electrodes (PX) of the respective sub-pixels. Here, the reference voltage of H level (V-CT-H) or the reference voltage of L level (V-CT-L) is applied to the counter electrodes (CT_{n+1}) of the reflective portions 11 on the n th display line which is the next line and the counter electrodes (CT_{n+1}) of the transmissive portions 10 of the respective sub-pixels on the ($n+1$)th display line

which is the next-to-next line from the power source line (COMA). Due to such an operation, the reference voltages of the counter electrodes (CT) of the respective sub-pixels on the respective display lines are decided.

[0074] Accordingly, also in the example shown in Fig. 10, when the video voltage is written in the pixel electrodes (PX), potentials of two counter electrodes (CT) in the vicinity of the pixel electrodes (PX) are always fixed thus ensuring a stable writing.

[0075] Here, when the scanning direction assumes a direction opposite to the direction indicated by the arrow C in Fig. 2, in Fig. 10, the upper side of the pixel electrodes (PX) constitutes the reflective portion 11, and the lower side of the pixel electrodes (PX) constitutes the transmissive portion 10. Then, the gates of the thin film transistors (TFT) of the respective sub-pixels on the (n-1)th display line are turned on, so as to write the video voltage to the pixel electrodes (PX) of the respective sub-pixels, the reference voltage of H level (V-CT-H) or the reference voltage of L level (V-CT-L) is applied to the counter electrodes (CT_{n+1}) of the transmissive portions 10 on the nth display line which is the next row and the counter electrodes (CT_{n+1}) of the reflective portions 11 of the respective sub-pixels on the (n+1)th display line which is the next-to-next line from the power source line (COMA).

[0076] The voltages which are supplied to the power source lines (COMA) shown in Fig. 9 and Fig. 10 are expressed as waveforms (A) on the lower parts of Fig. 9 and Fig. 10, while the voltages which are supplied to the power source lines (COMB) shown in Fig. 9 and Fig. 10 are expressed as waveforms (B) on the lower parts of Fig. 9 and Fig. 10.

[0077] As can be understood from these voltage waveforms, the voltages supplied to the power source lines (COMA) and the voltages supplied to the power source lines (COMB) are the reference voltage of H level (V-CT-H) or the reference voltage of L level (V-CT-L), and these voltages are inverted for every frame.

[0078] Here, this embodiment adopts an inversion driving method for every 1 display line as a AC driving method and hence, in the nth display line, when the video voltage applied to the pixel electrodes (PX) assumes the positive polarity in the transmissive portion 10, the reference voltage applied to the counter electrodes (CT) in the transmissive portion 10 assumes the negative polarity (becoming the reference voltage of L level (V-CT-L)), and in the next (n+1) th display line, the video voltage applied to the pixel electrodes (PX) assumes the negative polarity in the transmissive portion 10 and hence, the reference voltage applied to the counter electrodes (CT) of the transmissive portion 10 assumes the positive polarity (reference voltage of H level (V-CT-H)).

[0079] Here, the above-mentioned patent documents 2 and 3 may be referred with respect to the details of the inversion driving method for every 1 display line.

[0080] Although the pixel electrodes (PX) and the counter electrodes (CT) are arranged on the same layer in the embodiment 1, the pixel electrodes (PX) and the

counter electrodes (CT) may be arranged on layers which are different from each other by way of the insulation film.

[0081] A back light may be arranged on the back surface of the liquid crystal display panel of the present invention.

[0082] Further, conventionally, as means to overcome the contrast inversion characteristic shown in Fig. 13, a method which uses a phase difference plate such as a $\lambda/4$ wavelength plate or a $\lambda/2$ wavelength plate may be considered. According to the present invention, it is possible to overcome the drawback of contrast inversion without using a phase difference plate. It is needless to say that in the present invention a phase difference plate may be used to compensate for coloring or the like.

[0083] The present invention has been specifically explained in conjunction with embodiments, however, the present invention is not limited by the above-mentioned embodiments, and various modifications are conceivable without departing from the concept of the present invention.

Claims

1. Transflective liquid crystal display device which includes a liquid crystal display panel having a pair of substrates (SUB1, SUB2) and a liquid crystal (LC) which is sandwiched between the pair of substrates (SUB1, SUB2),
the liquid crystal display panel including a plurality of sub-pixels (A, B) each of which includes a transmissive portion (10) and a reflective portion (11),
each sub-pixel (A, B) of the plurality of sub-pixels (A, B) including a pixel electrode (PX) which is formed on one substrate (SUB1) out of the pair of substrates (SUB1, SUB2) and a counter electrode (CT) which is formed on the one substrate (SUB1), and an electric field being generated between the pixel electrodes (PX) and the counter electrodes (CT) thus driving the liquid crystal, wherein
each sub-pixel (A, B) is configured such that the pixel electrode is formed in common with respect to the transmissive portion (10) and the reflective portion (11) and the counter electrode (CT) is formed independently with respect to the transmissive portion (10) and the reflective portion (11).
2. Transflective liquid crystal display device according to claim 1,
wherein, in the inside of each sub-pixel, the potential which is applied to the counter electrode of one of the transmissive portion and the reflective portion is a potential higher than the potential which is applied to the pixel electrode, and the potential which is applied to the counter electrode of another of the transmissive portion and the reflective portion is a potential lower than the potential which is applied to the pixel electrode.

3. Transflective liquid crystal display device according to claim 1 or 2, wherein the transmissive portions (10) have normally-black characteristic which performs a black display in a state that a voltage is not applied, and the reflective portions have normally-white characteristic which performs a white display in a state that a voltage is not applied.
4. Transflective liquid crystal display device according to any of claims 1 to 3, wherein the counter electrodes (CT) are independently driven for every 1 display line.
5. Transflective liquid crystal display device according to any of claims 1 to 4, wherein, assuming that two neighboring display lines are constituted of one display line and another display line, reference voltages which differ from each other are applied to the counter electrodes of the transmissive portions of the respective sub-pixels on the one display line and the counter electrodes of the reflective portions of the respective sub-pixels on the one display line, and the same reference voltage (V-CT) is applied to the counter electrodes of the reflective portions (11) of the respective sub-pixels on the one display line and the counter electrodes of the transmissive portions (10) of the respective sub-pixels (A, B) on the other display line.
6. Transflective liquid crystal display device according to any of claims 1 to 5, wherein, assuming that two neighboring display lines are constituted of one display line and another display line, reference voltages (V-CT) which differ from each other are applied to the counter electrodes (CT) of the transmissive portions (10) of the respective sub-pixels (A, B) on the one display line and the counter electrodes (CT) of the reflective portions (11) of the respective sub-pixels (A, B) on the one display line, the same reference voltage (V-CT) is applied to the counter electrodes (CT) of the reflective portions (11) of the respective sub-pixels (A, B) on the one display line and the counter electrodes (CT) of the transmissive portions (10) of the respective sub-pixels (A, B) on the other display line, and the counter electrodes (CT) are driven independently for every 1 display line.
7. Transflective liquid crystal display device according to any of claim 1 to 6, wherein the counter electrode (CT) in the reflective portion (11) in each sub-pixel (A, B) on the one display line and the counter electrode (CT) in the transmissive portion (10) in each sub-pixel (A, B) on the other display line are formed of a common electrode.
8. Transflective liquid crystal display device according to any of claims 1 to 7, wherein the pixel electrodes (PX) in the transmissive portions (10) and the pixel electrodes (PX) in the reflective portions (11) differ from each other in the intervals of the electrodes.
9. Transflective liquid crystal display device according to any of claims 1 to 8, wherein the pixel electrodes (PX) in the reflective portions (11) are made of a metal which exhibits a reflectance of 70 % or less.
10. Transflective liquid crystal display device according to any of claims 1 to 8, wherein the pixel electrodes (PX) in the reflective portions (11) are formed of a transparent electrode, the reflective portions (11) include a reflective film, and the reflective film has a slit at a position where the slit is overlapped to the pixel electrode (PX) in the reflective portion (11).
11. Transflective liquid crystal display device according to any of claims 1 to 10, wherein the other substrate (SUB2) out of the pair of substrates (SUB1, SUB2) has a light blocking film at a position where it faces the pixel electrode (PX) in the reflective portion (11) in an opposed manner.
12. Transflective liquid crystal display device according to any of claims 1 to 11, wherein the counter electrode (CT) is formed of a strip-like electrode, an interlayer insulation film is formed on the counter electrode (CT) of the strip-like electrode, and the pixel electrode (PX) is formed on the interlayer insulation film.
13. Transflective liquid crystal display device according to any of claims 1 to 12, wherein assuming n as an integer of 1 or more, in synchronism with the writing of a video voltage (V-PX) to the pixel electrodes (PX) in the nth display line, the same reference voltage (V-CT) is applied to the counter electrodes (CT) of the reflective portions (11) in the nth display line and the counter electrodes (CT) of the transmissive portions (10) in the (n+1)th display line.
14. Transflective liquid crystal display device according to any of claims 1 to 12, wherein assuming n as an integer of 1 or more, in synchronism with the writing of a video voltage (V-PX) to the pixel electrodes (PX) in the nth display line, the same reference voltage (V-CT) is applied to the counter electrodes (CT) of the transmissive portions (10) in the nth display line and the counter electrodes (CT) of the reflective portions (11) in the (n+1)th display line.
15. Transflective liquid crystal display device according to any of claims 1 to 13, wherein assuming n as an integer of 1 or more, in synchronism with the writing of a video voltage (V-PX) to the pixel electrodes (PX)

in the nth display line, the same reference voltage (V-CT) is applied to the counter electrodes (CT) of the reflective portions (11) in the (n+1)th display line and the counter electrodes (CT) of the transmissive portions (10) in the (n+2)th display line. 5

- 16. Transflective liquid crystal display device according to any of claims 1 to 12 and 14, wherein assuming n as an integer of 1 or more, in synchronism with the writing of a video voltage (V-PX) to the pixel electrodes (PX) in the nth display line, the same reference voltage (V-CT) is applied to the counter electrodes (CT) of the transmissive portions (10) in the (n+1)th display line and the counter electrodes (CT) of the reflective portions (11) in the (n+2)th display line. 10 15

20

25

30

35

40

45

50

55

FIG. 1

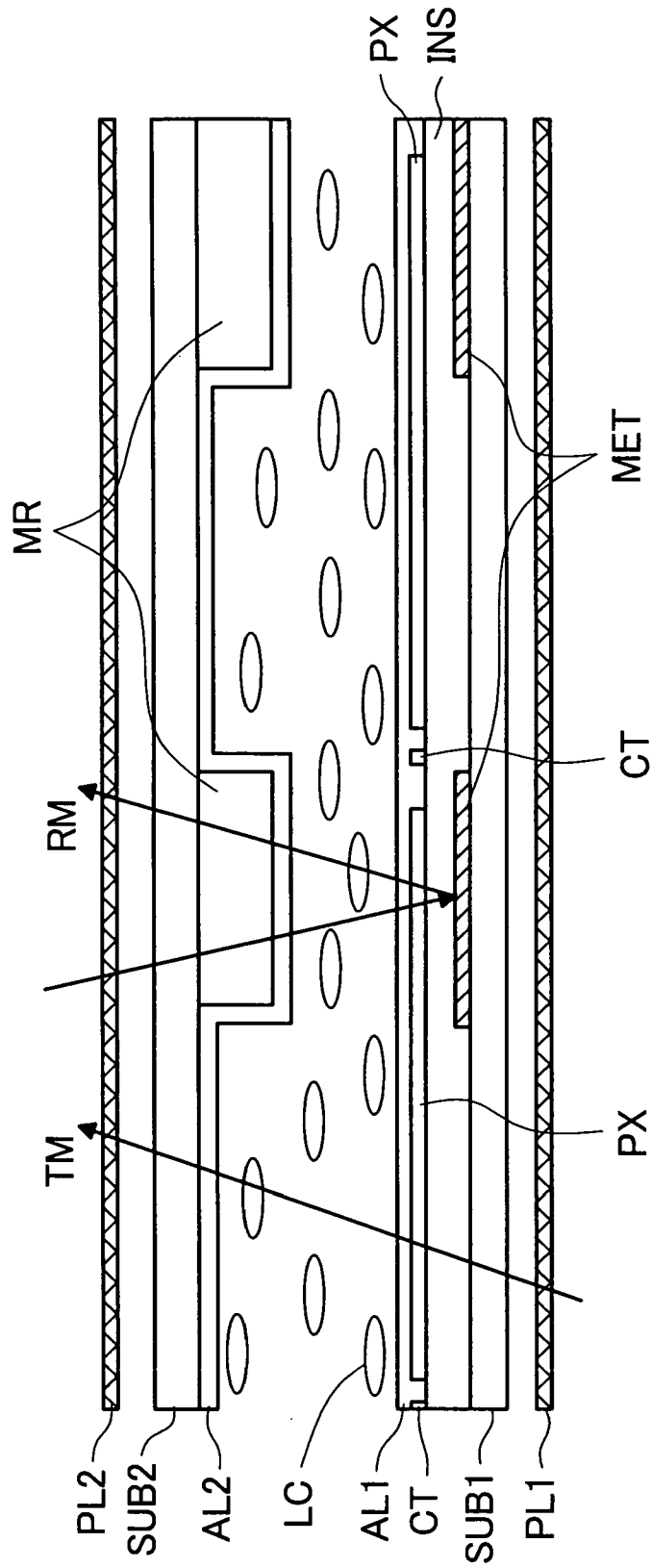


FIG. 2

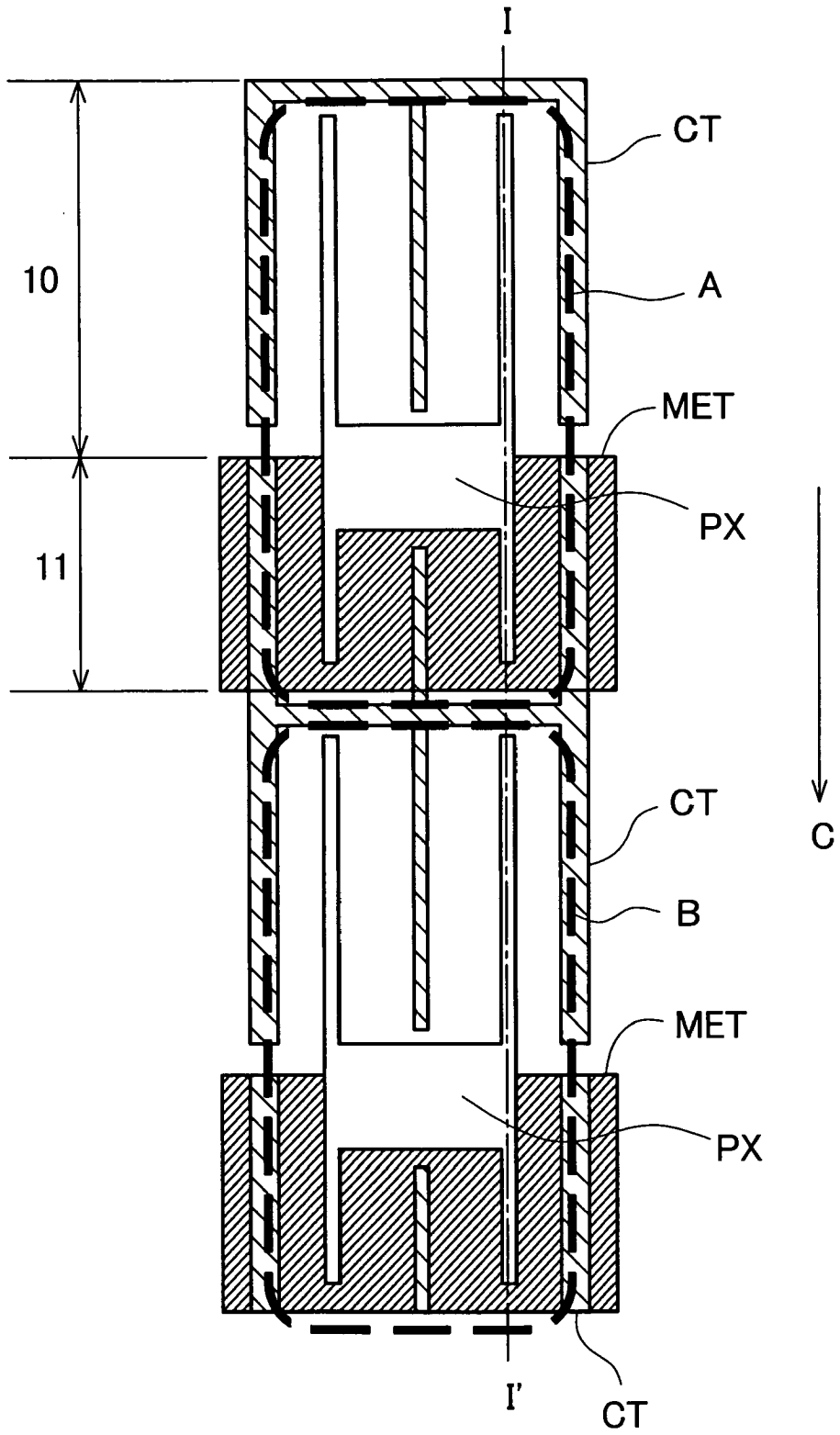


FIG. 3

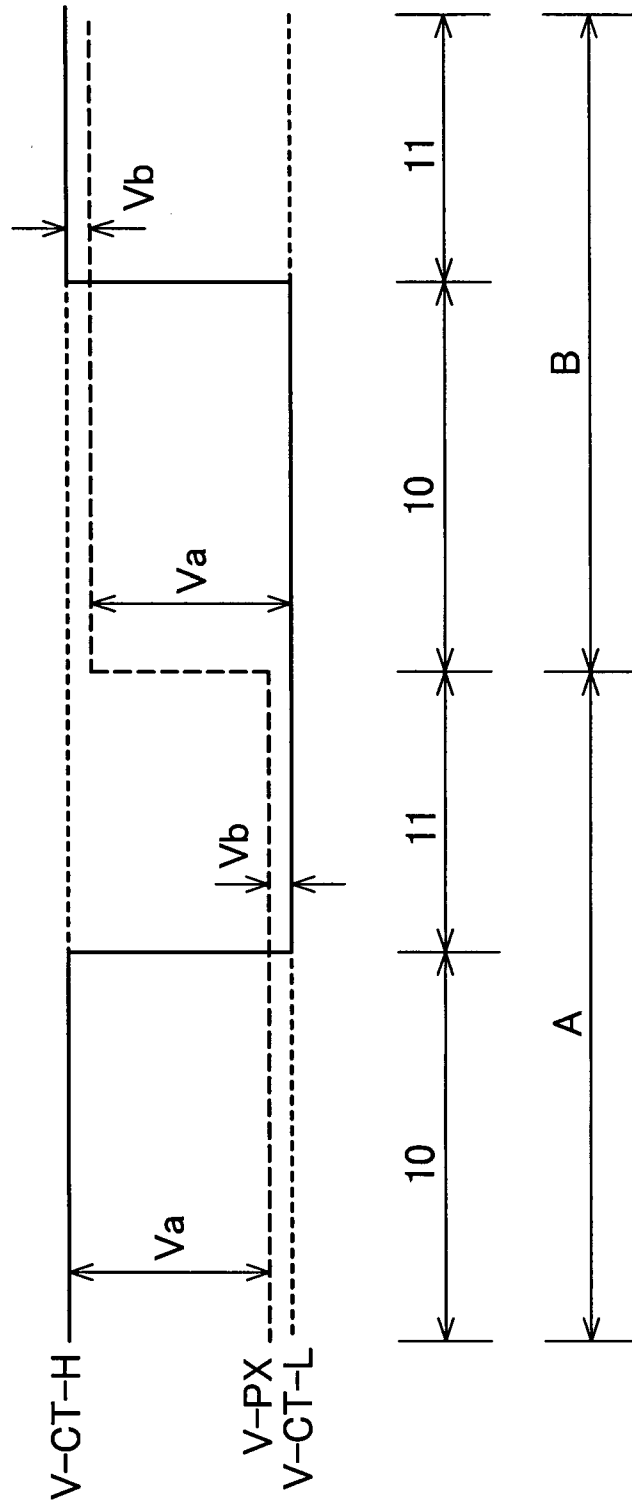


FIG. 4

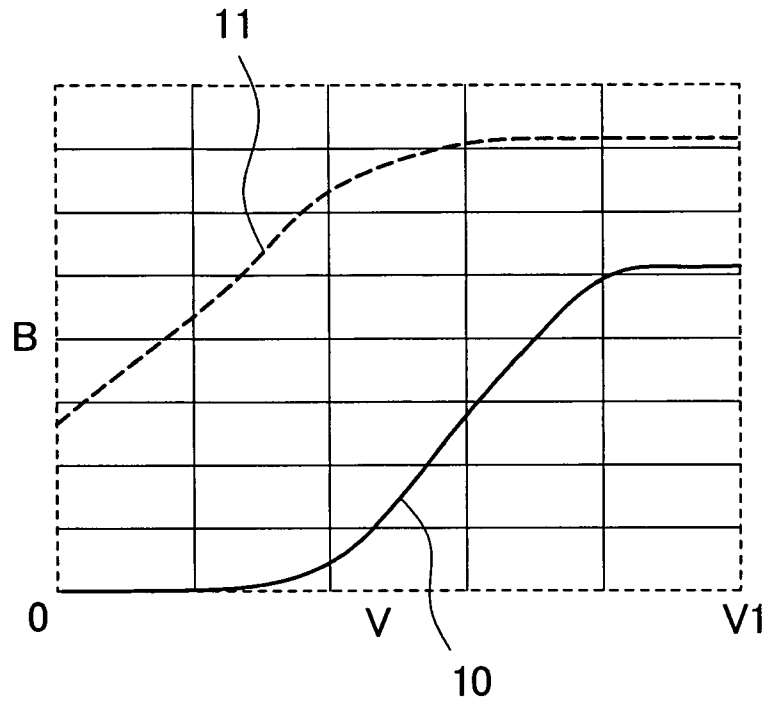


FIG. 5

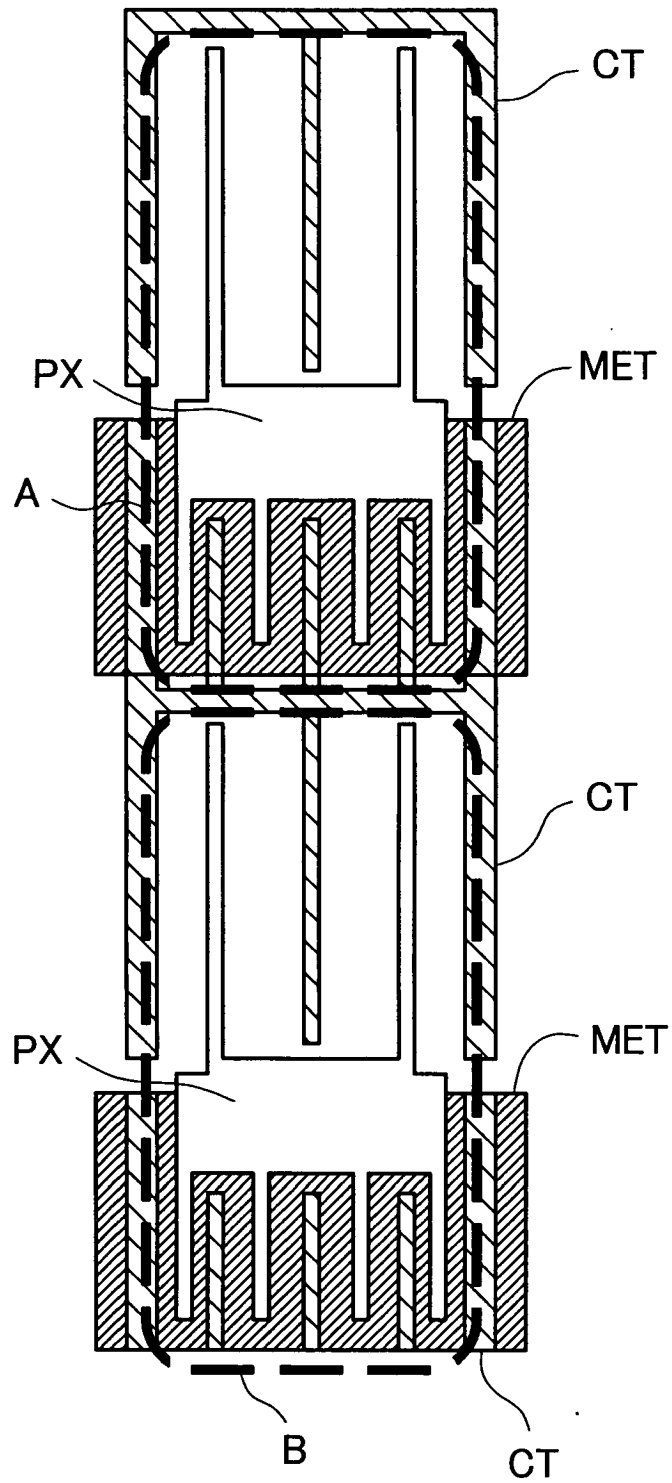


FIG. 6

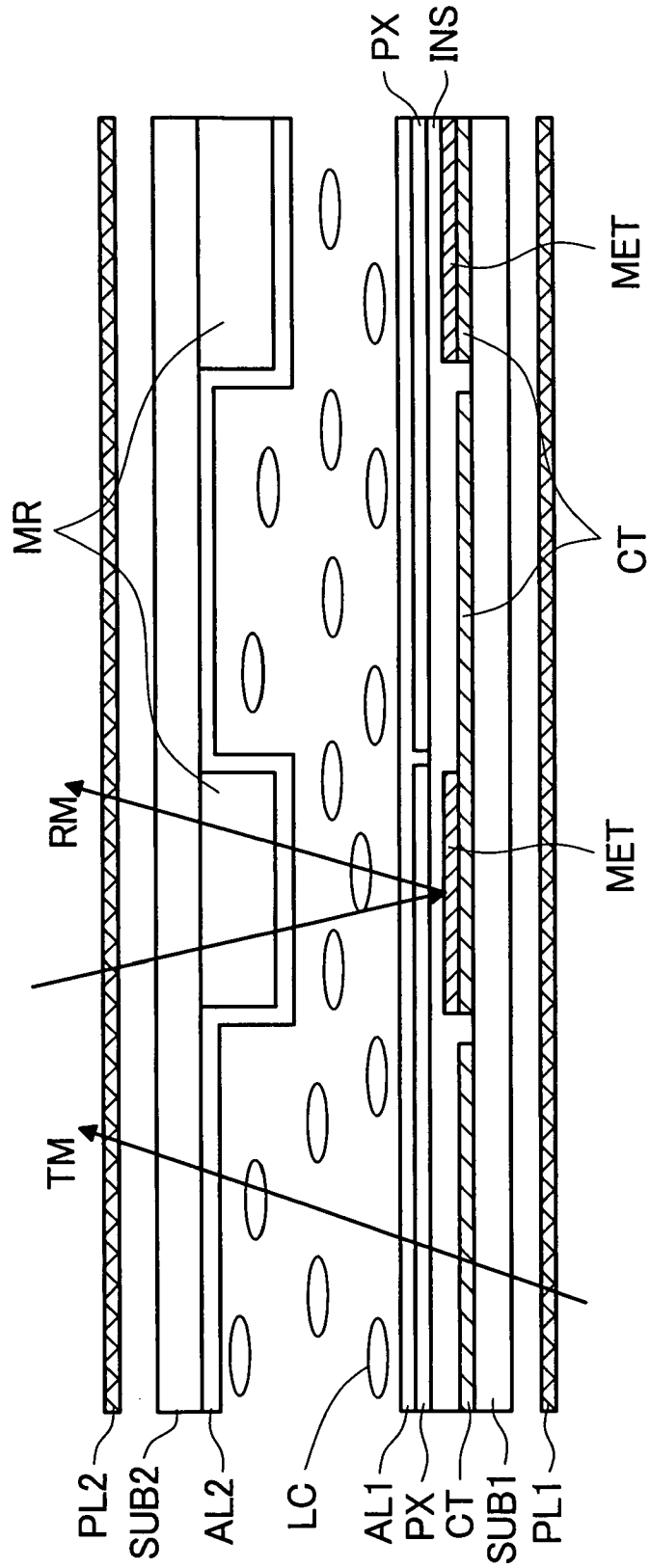


FIG. 7

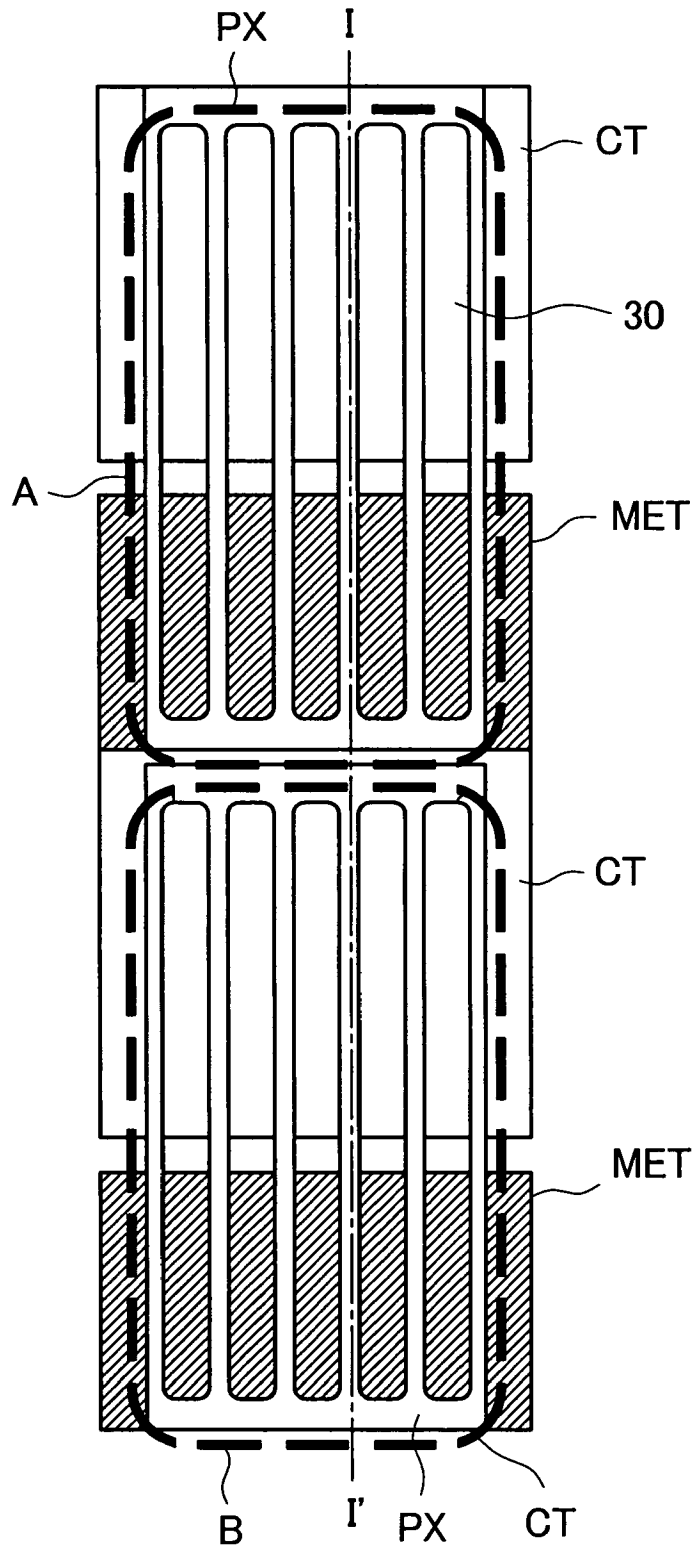


FIG. 8

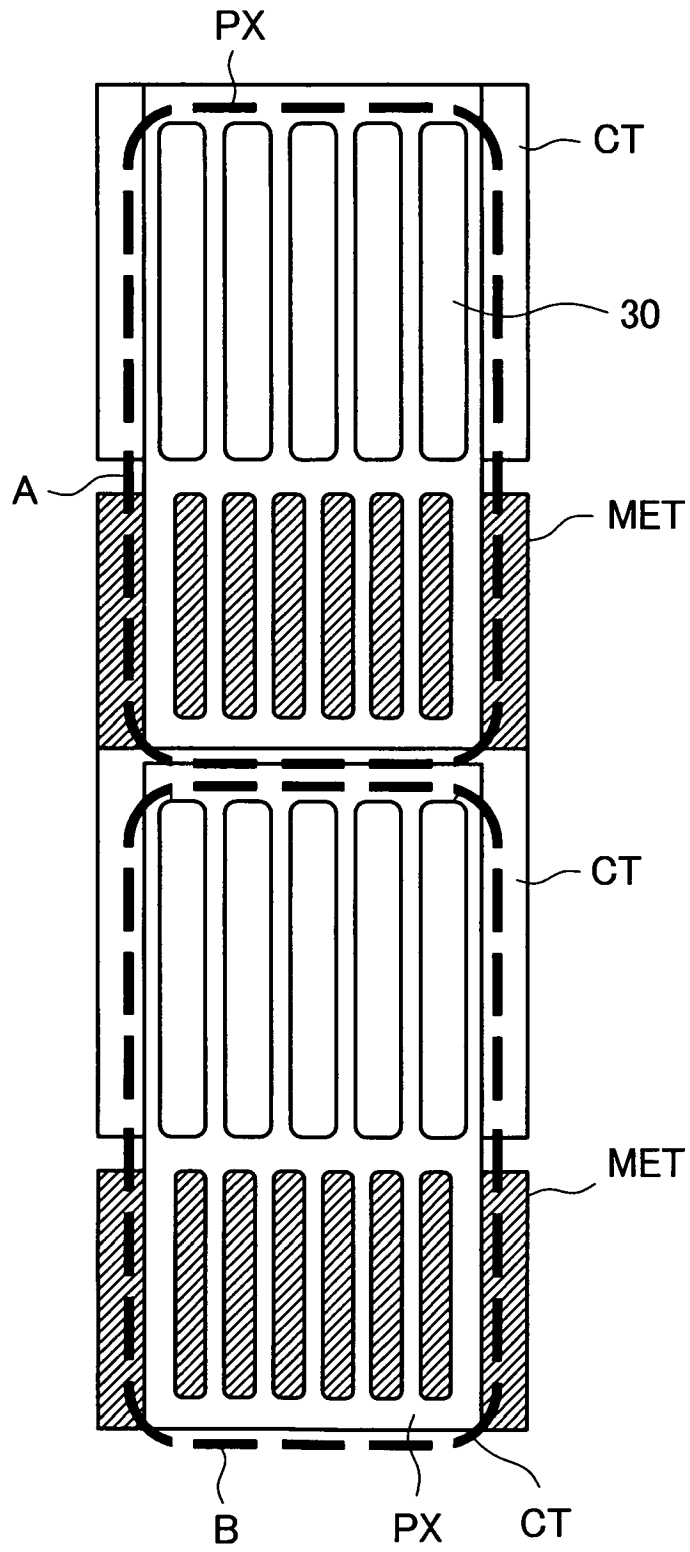


FIG. 9

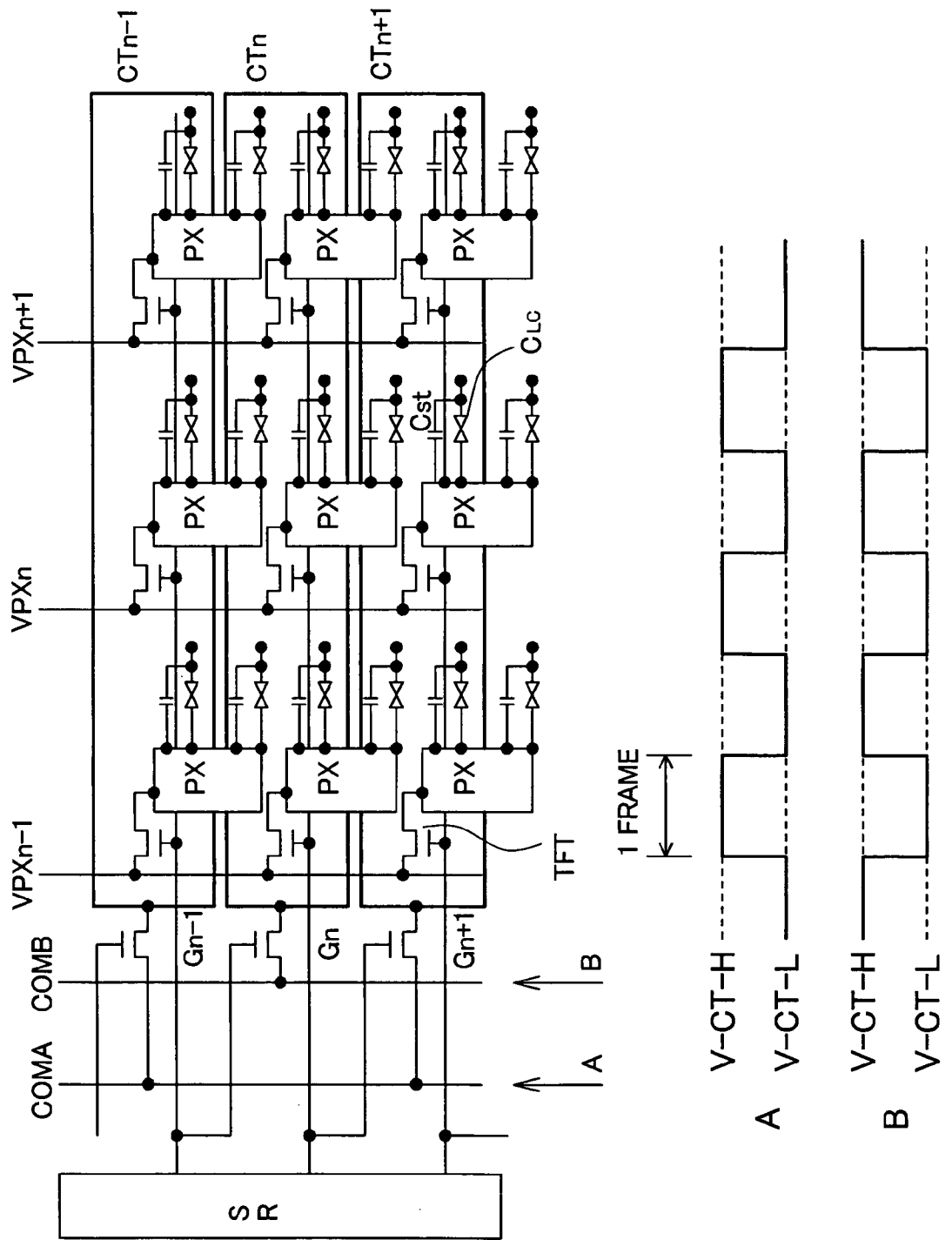


FIG. 11
PRIOR ART

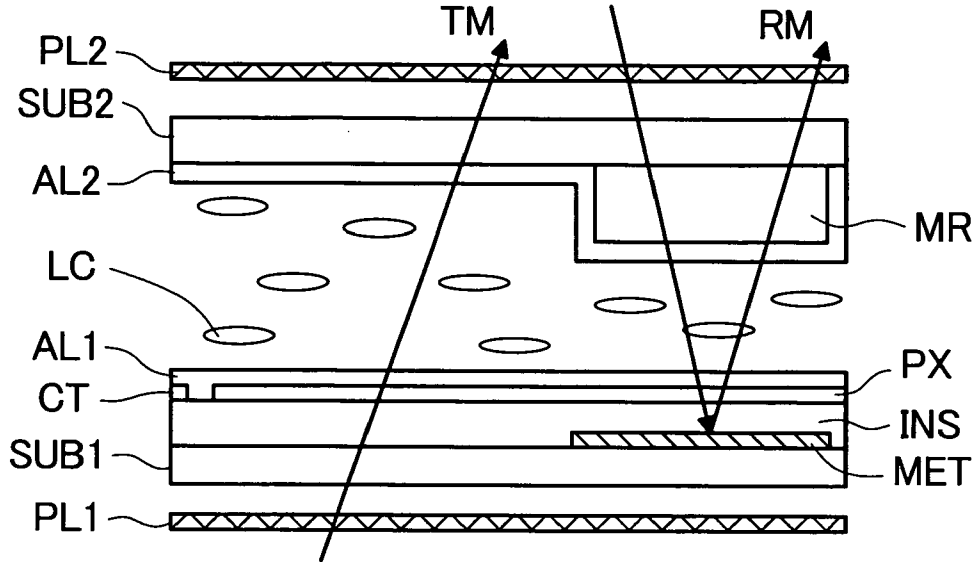


FIG. 12
PRIOR ART

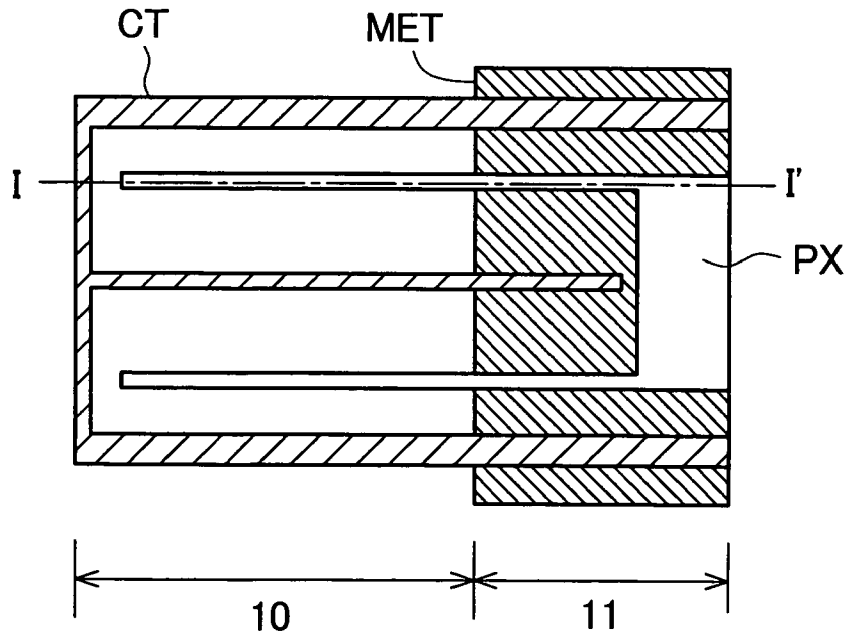
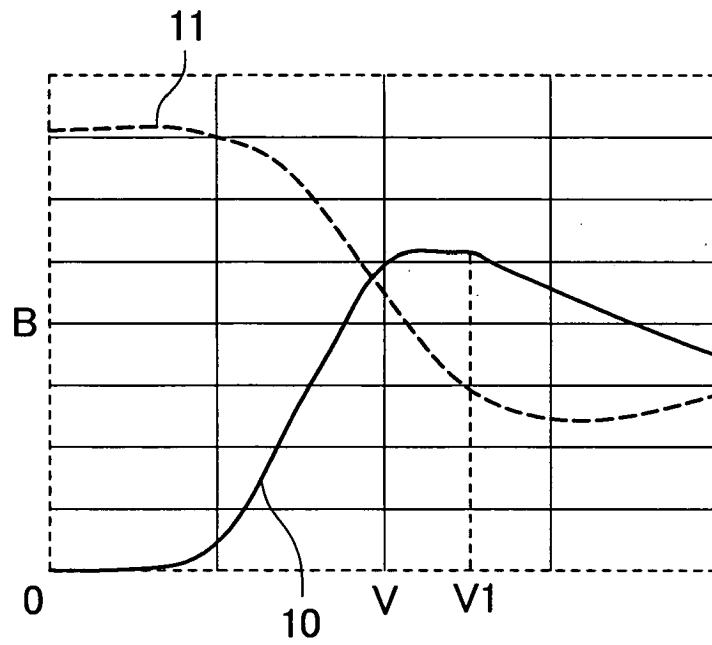


FIG. 13
PRIOR ART





DOCUMENTS CONSIDERED TO BE RELEVANT			
Category	Citation of document with indication, where appropriate, of relevant passages	Relevant to claim	CLASSIFICATION OF THE APPLICATION (IPC)
X	US 2003/218664 A1 (SAKAMOTO MICHIAKI [JP] ET AL) 27 November 2003 (2003-11-27) * figures 5-10 * * paragraph [0089] - paragraph [0123] *	1	INV. G02F1/1343 G02F1/1335
Y	-----	4,8,12	ADD. G02F1/1333
Y	US 2005/083462 A1 (LIN CHING-HUAN [TW]) 21 April 2005 (2005-04-21) * figures 4-6 * * paragraph [0029] - paragraph [0041] *	1,4,8,12	
Y	US 2004/252261 A1 (WEN CHI-JAIN [TW] ET AL) 16 December 2004 (2004-12-16) * abstract * * figures 2-7 * * paragraphs [0007], [0009] * * paragraph [0048] - paragraph [0057] *	1,4,8,12	
Y	US 2002/001867 A1 (SUNG UN CHEOL [KR] ET AL) 3 January 2002 (2002-01-03) * figures 1,2 *	12	
E	US 2007/002226 A1 (SAKAMOTO MICHIAKI [JP] ET AL) 4 January 2007 (2007-01-04) * the whole document *	1-16	
The present search report has been drawn up for all claims			TECHNICAL FIELDS SEARCHED (IPC)
			G02F
4	Place of search Munich	Date of completion of the search 24 January 2007	Examiner Kentischer, Florian
CATEGORY OF CITED DOCUMENTS		T : theory or principle underlying the invention E : earlier patent document, but published on, or after the filing date D : document cited in the application L : document cited for other reasons & : member of the same patent family, corresponding document	
X : particularly relevant if taken alone Y : particularly relevant if combined with another document of the same category A : technological background O : non-written disclosure P : intermediate document			

EPO FORM 1503 03/02 (P04C01)

**ANNEX TO THE EUROPEAN SEARCH REPORT
ON EUROPEAN PATENT APPLICATION NO.**

EP 06 02 2840

This annex lists the patent family members relating to the patent documents cited in the above-mentioned European search report. The members are as contained in the European Patent Office EDP file on
The European Patent Office is in no way liable for these particulars which are merely given for the purpose of information.

24-01-2007

Patent document cited in search report	Publication date	Patent family member(s)	Publication date
US 2003218664 A1	27-11-2003	CN 1474216 A JP 2003344837 A	11-02-2004 03-12-2003
US 2005083462 A1	21-04-2005	TW 594292 B	21-06-2004
US 2004252261 A1	16-12-2004	US 2005195347 A1	08-09-2005
US 2002001867 A1	03-01-2002	JP 3740514 B2 JP 2002090781 A KR 20020002052 A TW 541702 B	01-02-2006 27-03-2002 09-01-2002 11-07-2003
US 2007002226 A1	04-01-2007	CN 1892349 A	10-01-2007

EPO FORM P0459

For more details about this annex : see Official Journal of the European Patent Office, No. 12/82

REFERENCES CITED IN THE DESCRIPTION

This list of references cited by the applicant is for the reader's convenience only. It does not form part of the European patent document. Even though great care has been taken in compiling the references, errors or omissions cannot be excluded and the EPO disclaims all liability in this regard.

Patent documents cited in the description

- JP 2003344837 A [0005]
- JP 2001194685 A [0006]
- JP 10031464 A [0006]

专利名称(译)	透反液晶显示装置		
公开(公告)号	EP1783543A1	公开(公告)日	2007-05-09
申请号	EP2006022840	申请日	2006-11-02
[标]申请(专利权)人(译)	株式会社日立显示器		
申请(专利权)人(译)	日立显示器有限公司.		
当前申请(专利权)人(译)	日立显示器有限公司.		
[标]发明人	MORIMOTO MASATERU C O HITACHI DISPLAY LTD MIYAZAWA TOSHIO C O HITACHI DISPLAY LTD HIROTA SHOICHI C O HITACHI LTD INT PROP GRP		
发明人	MORIMOTO, MASATERU C/O HITACHI DISPLAYS, LTD. MIYAZAWA, TOSHIO C/O HITACHI DISPLAYS, LTD. HIROTA, SHOICHI C/O HITACHI LTD., INT. PROP. GROUP		
IPC分类号	G02F1/1343 G02F1/1335 G02F1/1333		
CPC分类号	G02F1/133555 G02F1/133371 G02F1/134363 G02F2001/134318 G02F2203/09		
优先权	2005322049 2005-11-07 JP		
其他公开文献	EP1783543B1		
外部链接	Espacenet		

摘要(译)

本发明提供一种IPS型半透半反液晶显示装置，其中对比度在透射部分（10）和反射部分（11）之间不反转。透反液晶显示装置包括液晶显示面板，该液晶显示面板具有一对基板（SUB1，SUB2）和夹在该对基板（SUB1，SUB2）之间的液晶（LC），其中液晶显示面板包括：多个子像素（A，B），每个子像素包括透射部分（10）和反射部分（11），多个子像素中的每个子像素（A，B）包括像素电极（PX）形成在一个基板（SUB1）和形成在同一基板（SUB1）上的对电极（CT）上，并且在像素电极（PX）和对电极（CT）之间产生电场，从而驱动液晶（LC）。此外，每个子像素（A，B）被配置为使得像素电极（PX）相对于透射部分（10）和反射部分（11）共同形成，并且对电极独立地形成。透射部分（10）和反射部分（11）。

