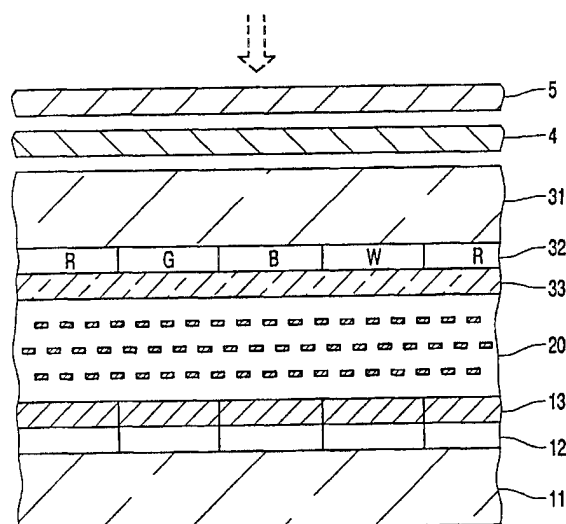




## INTERNATIONAL APPLICATION PUBLISHED UNDER THE PATENT COOPERATION TREATY (PCT)

(51) International Patent Classification <sup>7</sup> : G02F 1/00	A2	(11) International Publication Number: <b>WO 00/70392</b>  (43) International Publication Date: 23 November 2000 (23.11.00)
(21) International Application Number: PCT/EP00/04424 (22) International Filing Date: 12 May 2000 (12.05.00)  (30) Priority Data: 11/134983                      14 May 1999 (14.05.99)                      JP  (71) Applicant (for all designated States except US): KONINKLIJKE PHILIPS ELECTRONICS N.V. [NL/NL]; Groenewoudseweg 1, NL-5621 BA Eindhoven (NL).  (72) Inventor; and (75) Inventor/Applicant (for US only): YOSHIDA, Kei [JP/NL]; Prof. Holstlaan 6, NL-5656 AA Eindhoven (NL).  (74) Agent: RAAP, Adriaan, Y.; Internationaal Octrooibureau B.V., Prof. Holstlaan 6, NL-5656 AA Eindhoven (NL).		(81) Designated States: CN, KR, US, European patent (AT, BE, CH, CY, DE, DK, ES, FI, FR, GB, GR, IE, IT, LU, MC, NL, PT, SE).  <b>Published</b> <i>Without international search report and to be republished upon receipt of that report.</i>

(54) Title: A REFLECTION TYPE COLOR LIQUID CRYSTAL DISPLAY DEVICE HAVING SUB-PIXELS FOR INCREASING LUMINANCE, AND A LIGHT SCATTERING FILM INCLUDING COLOR FILTERS FOR THE SUB-PIXELS AND MANUFACTURING METHOD THEREOF



## (57) Abstract

A reflective color display device having a color filter (32) with portions (w) for filtering or transmitting light components of a predetermined wavelength to increase luminance.

**FOR THE PURPOSES OF INFORMATION ONLY**

Codes used to identify States party to the PCT on the front pages of pamphlets publishing international applications under the PCT.

AL	Albania	ES	Spain	LS	Lesotho	SI	Slovenia
AM	Armenia	FI	Finland	LT	Lithuania	SK	Slovakia
AT	Austria	FR	France	LU	Luxembourg	SN	Senegal
AU	Australia	GA	Gabon	LV	Latvia	SZ	Swaziland
AZ	Azerbaijan	GB	United Kingdom	MC	Monaco	TD	Chad
BA	Bosnia and Herzegovina	GE	Georgia	MD	Republic of Moldova	TG	Togo
BB	Barbados	GH	Ghana	MG	Madagascar	TJ	Tajikistan
BE	Belgium	GN	Guinea	MK	The former Yugoslav Republic of Macedonia	TM	Turkmenistan
BF	Burkina Faso	GR	Greece			TR	Turkey
BG	Bulgaria	HU	Hungary	ML	Mali	TT	Trinidad and Tobago
BJ	Benin	IE	Ireland	MN	Mongolia	UA	Ukraine
BR	Brazil	IL	Israel	MR	Mauritania	UG	Uganda
BY	Belarus	IS	Iceland	MW	Malawi	US	United States of America
CA	Canada	IT	Italy	MX	Mexico	UZ	Uzbekistan
CF	Central African Republic	JP	Japan	NE	Niger	VN	Viet Nam
CG	Congo	KE	Kenya	NL	Netherlands	YU	Yugoslavia
CH	Switzerland	KG	Kyrgyzstan	NO	Norway	ZW	Zimbabwe
CI	Côte d'Ivoire	KP	Democratic People's Republic of Korea	NZ	New Zealand		
CM	Cameroon			PL	Poland		
CN	China	KR	Republic of Korea	PT	Portugal		
CU	Cuba	KZ	Kazakstan	RO	Romania		
CZ	Czech Republic	LC	Saint Lucia	RU	Russian Federation		
DE	Germany	LI	Liechtenstein	SD	Sudan		
DK	Denmark	LK	Sri Lanka	SE	Sweden		
EE	Estonia	LR	Liberia	SG	Singapore		

A reflection type color liquid crystal display device having sub-pixels for increasing luminance, and a light scattering film including color filters for the sub-pixels and manufacturing method thereof.

The present invention relates to a reflection type color liquid crystal display device for displaying a color image by using extraneous light, and to a light scattering film capable of being used in the liquid crystal display device.

Such a reflection type liquid crystal display device receives attention because it is expected to have lower power consumption and to be miniaturized. The publicly known example includes a reflection type liquid crystal display device disclosed in Japanese Patent Laid-Open No. 154817/98.

This publication discloses the structure of a display panel which, although using only one polarizing plate as polarizing means, makes it possible to obtain a high quality image and bright display.

In the publicly known display panel, unit pixels each consisting of three sub-pixels corresponding to primary colors such as R(red), G(green) and B(blue) are arranged so as to form an image. To this end, the display panel is provided with R, G and B color filters in correspondence with the sub-pixels.

However, to obtain a brighter display in an arrangement having such color filters of R, G and B sub-pixels, it is often necessary to resort to, e.g., a measure which will disadvantageously lead to degradation of color purity of the color filters.

Further, generally, to provide products at a cheap price are important whether the products are reflection type or transmission type. Therefore, when making a structure enabling a brighter display, it is also necessary to pay close attention to the cost performance of manufacture.

In view of the above, a main object of the present invention is to provide a liquid crystal display device capable of increasing the luminance of display without decreasing the color purity.

Another object of this invention is to provide a light scattering film capable of reducing or saving the cost without heavily burdening the manufacturing process while ensuring the above object, and a method of manufacture thereof.

To achieve the above-mentioned main object, one aspect of the present invention is a reflection type color liquid crystal display device for displaying a color image

formed based on unit pixels each comprising sub-pixels corresponding to primary colors by using extraneous light, which comprises: a liquid crystal layer varying a state of light transmitted therethrough in accordance with electric field applied thereacross; a reflection layer reflecting light which is incident thereon via the liquid crystal layer; transparent electrode layer and pixel electrode layer for applying electric field to the liquid crystal layer for each of the sub-pixels in accordance with an image to be displayed, the transparent layer located on a side of one main surface of the liquid crystal layer on which extraneous light is incident, the pixel electrode layer located on a side of another surface of the liquid crystal layer on which light reflected from the reflection layer is incident; and a color filter layer comprising portions which perform coloring of the primary colors for the light to be transmitted (or the light having transmitted) through the liquid crystal layer in correspondence with the sub-pixels, characterized in that: the unit pixel further comprises a sub-pixel for increasing luminance; and the color filter layer further comprises additional portions associated with the sub-pixels for increasing luminance, the additional portion transmitting light components of predetermined wave-lengths from the light to be transmitted (or the light having transmitted) through the liquid crystal layer.

In this device, the color filter may be located on a side of the one main surface on which extraneous light is incident, or the color filter may be located on a side of another surface of the liquid crystal layer on which light reflected from the reflection layer is incident.

The light components of predetermined wave-lengths may be white light.

Further, the reflection layer and pixel electrode layer may be in the same layer and in common.

To achieve the other object mentioned above, another aspect of the present invention is a light scattering film capable of being used in a liquid crystal device for displaying a color image on the basis of unit pixels comprising sub-pixels corresponding to primary colors, characterized in that the film comprises: portions performing coloring of the primary colors for light transmitted thereof for each of the sub-pixels; additional portions associated with sub-pixels for increasing luminance, the additional portions transmitting light components of predetermined wave-lengths from light incident thereon; and a light scattering portion being extended over the whole of the film, and in that the additional portions and the light scattering portion are integrally formed from the same material.

In this film, the light components of predetermined wave-lengths may be white light.

To achieve the similar objects to the above, a still further aspect of the present invention is a method of manufacturing a light scattering film capable of being used in a liquid crystal display device for displaying a color image on the basis of unit pixels comprising sub-pixels corresponding to primary colors, characterized in that the method comprises: a preceding step of forming coloring portions on a support member while forming spaces for additional portions which are associated with sub-pixels for increasing luminance and which transmits light components of predetermined wave-lengths from light incident thereon, the coloring portions performing coloring of the primary colors for light transmitted thereof for each of the sub-pixels; and a succeeding step of filling the space and forming a light scattering portion extended over the whole of the film, with the same material which can be characteristic of transmitting the light components of predetermined wave-lengths.

The support member may be a transparent substrate located on a front side of a display screen in the liquid crystal display device, or it may be a transparent substrate which is located on a rear side of a display screen in the liquid crystal display device and on which a layer of driving element array and a reflection layer are stacked, the coloring portions and the additional portions being formed on the reflection layer.

Fig. 1 shows a sectional view of the structure of a display panel of a color liquid crystal display device according to one embodiment of the invention.

In this figure, a first transparent glass substrate 11 is located on a side of the rear surface of the display panel, and carries thin-film transistors (TFTs) 12 as a layer of an array of liquid crystal driving elements. The TFTs 12 are provided for each sub-pixel, the respective drains of which the TFTs are connected to pixel electrodes within a reflection layer 13, the electrodes each having an area formed for each sub-pixel. Therefore, the reflection layer 13 is in common with the so-called pixel electrode layer. The pixel electrode is composed of substances having adequate electrical conductivity and light reflectivity such as aluminum. Thus the pixel electrodes have a function of reflecting the extraneous light which is incident thereupon through the display panel towards the front side of the display panel, while acting as one-side electrodes through which an electric field is applied to the liquid crystal layer 20 for each of the sub-pixels. In the fabrication process, the glass substrate 11 serves as a base for the formation of the TFTs 12 and reflection layer 13.

Towards the front side of the display panel, a second transparent glass plate 31 is placed. The second glass plate 31 carries a color filter layer 32 on a side towards the rear side of the display panel. The color filter layer 32 is divided into portions in correspondence with the sub-pixels, and for each of the portions is allotted an appropriate optical filter part

for coloring (or transmitting all light components) R, G, B or W(white). Therefore, the color filter 32 has not only portions for performing coloring of the primary colors such as R, G and B as in the conventional device, but also additional portions for filtering or transmitting light components of predetermined wave-lengths or W (white light), while the TFTs 12 and the pixel electrodes in the reflection layer 13 both are placed not only in correspondence with the R, G and B sub-pixels, but also in correspondence with the W sub-pixels. The filter portions corresponding to the W sub-pixels may be made, for example, of an acrylic resin.

The color filter layer 32 has a common electrode 33 formed over its entire surface of a side towards the rear surface of the display panel. The common electrode 33 is made of a substance having adequate electrical conductivity and light transparency such as ITO (indium tin oxide), has a function of transmitting the light which is incident on it from outside of the display panel to the liquid crystal layer 20, and serves as the other electrode through which an electric field is applied to the liquid crystal layer 20 for the respective sub-pixels. In the fabrication process, the glass substrate 31 serves as a base for the formation of the color filter layer 32 and common electrode 33.

The material for the liquid crystal layer 20 is introduced into a gap formed between an assembly of the glass substrate 11, the TFTs 12 and the reflection layer 13 on one side of the display panel, and another assembly of the glass substrate 31, the color filter 32 and the common electrode 33 on the other side of the display panel. The material is sealed there with sealing members (not shown). Bonding together the two assemblies having the constitutions as described above and sealing-in of the liquid crystal material make a body of the display panel finished.

To the glass substrate 31 of the display panel body thus obtained, a polarizing plate 4 is attached on its surface towards the front side of the display panel. The polarizing plate 4 is provided so as to transmit only predetermined polarized light components of the extraneous light to the liquid crystal layer 20, and to allow only predetermined polarized light components of the reflected light modulated by the liquid crystal layer 20 to be displayed as an image.

Further, a light scattering film 5 is applied onto the front face of the polarizing plate 4. The light scattering film 5 is introduced to give a display with a wide viewing angle. To this end, for example, it has microscopic asperities on its surface to scatter the light.

The pixel electrodes in the reflection layer 13 and the common electrode 33 face to each other via the liquid crystal layer 20, so that a local electric field can be applied to the liquid crystal layer 20 for each sub-pixel in accordance with an image to be displayed.

In this embodiment, since four sub-pixels of R, G, B and W constitute a unit pixel, a W sub-pixel can be used to increase the brightness of the unit pixel independently of R, G and B sub-pixels which are involved in performing the coloring of primary colors. By the W sub-pixels, it becomes possible for extraneous light to be substantially totally reflected, whereby the displayable range of luminance is extended upwards. Thus it becomes possible to obtain a bright display without sacrificing the color purity on account of it.

Fig. 2 shows a sectional view of the structure of the display panel in the liquid crystal display device according to another embodiment of the invention. The parts equivalent in function to those of Fig. 1 are given the same symbols.

In contrast with the foregoing embodiment, the color filter layer 32 is placed on the side of the first glass substrate 11, instead of the color filter layer 32 having been on the side of the second glass substrate 31. To put it more specifically, the reflection layer 13' is given only a function of reflecting light while excluding a function of serving as pixel electrodes; on this reflection layer 13' is placed the color filter layer 32; and the common electrode 33 is directly layered onto the glass plate 31. Further, a layer 14 of transparent pixel electrodes is formed on the color filter layer 32, which is made of ITO. For this arrangement, conductive passages 14p are formed across the color filter layer 32 and the reflection layer 13' to connect the drains of the TFTs 12 with the respective electrodes of the pixel electrode layer 14. Even with such a constitution where the color filter layer is placed towards the rear side of the display panel, it is obviously possible to obtain the same advantage as in the foregoing embodiment by virtue of the introduction of the W sub-pixels.

Fig. 3 gives a sectional view of the structure of a light scattering film and a display panel in the liquid crystal display device incorporating a light scattering film according to a still further embodiment of the invention. The parts equivalent in function to those of Fig. 1 are given the same symbols.

Referring to Fig. 3, between the second glass substrate 31 and the common electrode 33 a layer 5' is inserted, which has both a function of the above-mentioned color filter 32 and a function of the above-mentioned light scattering film 5. To put it more specifically, in the layer 5', color filter portions 5w are provided for W sub-pixels to increase brightness, and a layer portion 5s is provided for forming a primary surface of a light scattering film. Here, the color filter portions 5w and the layer portion 5s are formed integrally from the same material. In other words, a light scattering film 5' incorporating color filters for W sub-pixels is introduced.

With this constitution, it becomes possible not only to obviate the need for a light scattering film introduced outside the display panel body, but also to form the light scattering portion 5s of the film 5' and its additional portion 5w at the same time (or by the same process). This results in reduction of the burden of process caused by the addition of the W sub-pixels. The fabrication process of the film 5' will be described later.

Fig. 4 gives a sectional view of the structure of display panel in the liquid crystal display device using a light scattering film according to a still further embodiment of the invention. The parts equivalent in function to those of Fig. 3 are given the same symbols.

This embodiment, in contrast to the construction represented in Fig. 3, has the film 5' formed towards the rear side of the display panel. Accordingly, film 5' is formed on the reflection layer 13, and the common electrode 33 is directly laminated onto the glass substrate 31.

Fig. 5 gives an example of the fabrication process of the light scattering film 5' according to the invention which has been described above with reference to Fig. 3.

The series of steps represented in the figure starts from preparing a second glass substrate 31 to serve as a supporting member for the film (step S1). The next step consists of a step of applying a liquid light sensitive resin (photoresist) which can serve as a color filter for the n-th color (e.g., R) uniformly over the main surface of the prepared glass substrate 31 (step S2). Then, the resultant substrate is subjected to a pre-baking process based on a heating step whereby the solvent of the liquid light sensitive resin is evaporated to somewhat harden the resin (step S3).

Following step S3, masking is applied to the resin such that resin portions to be remained on the glass substrate 31 are left exposed while the other unnecessary resin portions are masked, and the substrate with the masked resin is exposed to light to allow the necessary portions to be selectively exposed to light (step S4). After that, the resin portions not exposed to light being shielded by the mask are dissolved by a specified solvent for removal (step S5).

The resin portions, exposed to light because of its being left unmasked, do not dissolve in the solvent, and are left on the glass substrate 31. These resin portions are subjected to a post-baking process based on a heating step whereby sufficient hardening is achieved (step S6). The resin portions thus left on the glass substrate 31 form color filter portions for the n-th color.

Following step S6, the same treatment as done in the steps S2 to S6 is repeated to produce color filter portions for the (n+1)-th color (e.g., G). The same treatment as done



in the steps S2 to S6 is further repeated to produce color filter portions for the (n+2)-th color (e.g., B). When those steps are completed for the manufacture of R, G and B filter portions, as seen from Fig. 3 giving the structure of film 5', locations for the filter portions of W have recesses or voids.

- 5                   After the completion of the manufacture of R, G and B filter portions, in order to form the W color filter portions and the light scattering layer 5', a liquid thermosetting resin (e.g., acrylic resin) appropriate for formation of such structural elements is applied over the whole of the main surface of the glass substrate so as to not only fill the recesses for W color filter portions with itself, but also to coat the R, G and B color filter portions (step S7).
- 10   Then, the obtained assembly is subjected to heating treatment for hardening (step S8), to finish a film 5' as shown in Fig. 3.

After manufacture of the film 5', the process proceeds to manufacture of the common electrode 33.

- 15                   Steps S7 and S8 make it possible to form the W color filter portions 5w and the light scattering layer portion 5s almost at the same time in a single process, and thus to prevent the addition of the W sub-pixels from imposing an extra burden on the fabrication process.

- 20                   It should be noted that in Figs 1 to 4, constitutive elements used in practice such as an orientation or alignment layer attached to the liquid crystal layer 20 are omitted for clarity. Further, it will be obvious to those skilled in the art to, as appropriate, add to the embodiments the other constitutive elements that have not been mentioned above, or to modify the constitutive elements of the embodiments, within the range of matter of design variation.

- 25                   Further, in the above embodiments, no mention was given of the types of liquid crystal material applicable to the liquid crystal layer 20, or whether a retardation plate as described in the aforementioned publication should be introduced or not. However, needless to say, such publicly known techniques can be applied to this invention without departing from the scope of the invention as defined in the attached Claims.

- 30                   Furthermore, in the above-mentioned embodiments, white is selected as the display color of the sub-pixels for increasing luminance, but any other color may be used in the invention. For example, white may be substituted for green or cyan. Still further, all the four colors assigned to the sub-pixels may be changed. The four colors may be substituted, for example, for yellow, cyan, magenta and white. In short, the color assigned to an

additional sub-pixel for enhancing brightness may be determined as appropriate according to the primary colors employed.

5 [Fig. 1] This is a sectional view of the structure of the display panel of the color liquid crystal display device representing an embodiment of the invention.

[Fig. 2] This is a sectional view of the structure of the display panel of the liquid crystal display device representing another embodiment of the invention.

10 [Fig. 3] This is a sectional view of the structure of the display panel of the liquid crystal display device incorporating a light scattering film according to an embodiment of the invention.

[Fig. 4] This is a sectional view of the structure of the display panel of the liquid crystal display device incorporating a scattering film according to the other embodiment of the invention.

15 [Fig. 5] This is a process flowchart showing the steps of fabricating a light scattering film in accordance with the invention.

## [Reference Numerals]

- 11: First glass substrate
- 12: TFT
- 13,13': Reflection layer
- 5 20: Liquid crystal layer
- 31: Glass substrate
- 32: Color filter layer
- 14: Pixel electrode
- 14p: Electrically conductor
- 10 33: Common electrode
- 4: Polarizing plate
- 5,5': Light scattering film
- 5w: Color filter portion for W sub-pixel
- 5s: Predominant portion of light scattering film

(Translation of the Drawings)

Fig. 1

(dotted arrow): Extraneous light

5

Fig. 5

() : Preparation of filter / light scattering layer

S1: Preparation of substrate

S2: Application of R, G and B filters

10

S3: Pre-baking

S4: Exposure to light

S5: Development

S6: Post-baking

S7: Application of light scattering layer

15

S8: Heating

() : End

## CLAIMS:

1. A reflection type color liquid crystal display device for displaying a color image formed based on unit pixels each comprising sub-pixels corresponding to primary colors by using extraneous light, which comprises:

5 a liquid crystal layer varying a state of light transmitted therethrough in accordance with electric field applied thereacross;

a reflection layer reflecting light which is incident thereon via the liquid crystal layer;

transparent electrode layer and pixel electrode layer for applying electric field to the liquid crystal layer for each of the sub-pixels in accordance with an image to be displayed, the transparent layer located on a side of one main surface of the liquid crystal layer on which extraneous light is incident, the pixel electrode layer located on a side of another surface of the liquid crystal layer on which light reflected from the reflection layer is incident; and

15 a color filter layer comprising portions which perform coloring of the primary colors for the light to be transmitted (or the light having transmitted) through the liquid crystal layer in correspondence with the sub-pixels, CHARACTERIZED in that:

the unit pixel further comprises a sub-pixel for increasing luminance; and

20 the color filter layer further comprises additional portions associated with the sub-pixels for increasing luminance, the additional portion transmitting light components of predetermined wave-lengths from the light to be transmitted (or the light having transmitted) through the liquid crystal layer.

2. A device as claimed in Claim 1, CHARACTERIZED in that the color filter layer is located on a side of the one main surface on which extraneous light is incident.

25

3. A device as claimed in Claim 1, CHARACTERIZED in that the color filter layer is located on a side of another surface of the liquid crystal layer on which light reflected from the reflection layer is incident.

4. A device as claimed in Claim 1, 2 or 3, CHARACTERIZED in that the light components of predetermined wave-lengths are white light.

5. A device as claimed in any one of Claims 1 to 4, CHARACTERIZED in that  
5 the reflection layer and pixel electrode layer are in the same layer and in common.

6. A light scattering film capable of being used in a liquid crystal device for displaying a color image on the basis of unit pixels comprising sub-pixels corresponding to primary colors, CHARACTERIZED in that the film comprises:

10 portions performing coloring of the primary colors for light transmitted thereof for each of the sub-pixels;

additional portions associated with sub-pixels for increasing luminance, the additional portions transmitting light components of predetermined wave-lengths from light incident thereon; and

15 a light scattering portion being extended over the whole of the film, and in that the additional portions and the light scattering portion are integrally formed from the same material.

7. A film as claimed in Claim 6, CHARACTERIZED in that the light  
20 components of predetermined wave-lengths are white light.

8. A method of manufacturing a light scattering film capable of being used in a liquid crystal display device for displaying a color image on the basis of unit pixels comprising sub-pixels corresponding to primary colors, CHARACTERIZED in that the  
25 method comprises:

a preceding step of forming coloring portions on a support member while forming spaces for additional portions which are associated with sub-pixels for increasing luminance and which transmits light components of predetermined wave-lengths from light incident thereon, the coloring portions performing coloring of the primary colors for light  
30 transmitted thereof for each of the sub-pixels; and

a succeeding step of filling the space and forming a light scattering portion extended over the whole of the film, with the same material which can be characteristic of transmitting the light components of predetermined wave-lengths.

9. A method as claimed in Claim 8, CHARACTERIZED in that the support member is a transparent substrate located on a front side of a display screen in the liquid crystal display device.

5 10. A method as claimed in Claim 8, CHARACTERIZED in that the support member is a transparent substrate which is located on a rear side of a display screen in the liquid crystal display device and on which a layer of driving element array and a reflection layer are stacked, and in that the coloring portions and the additional portions are formed on the reflection layer.

1/3

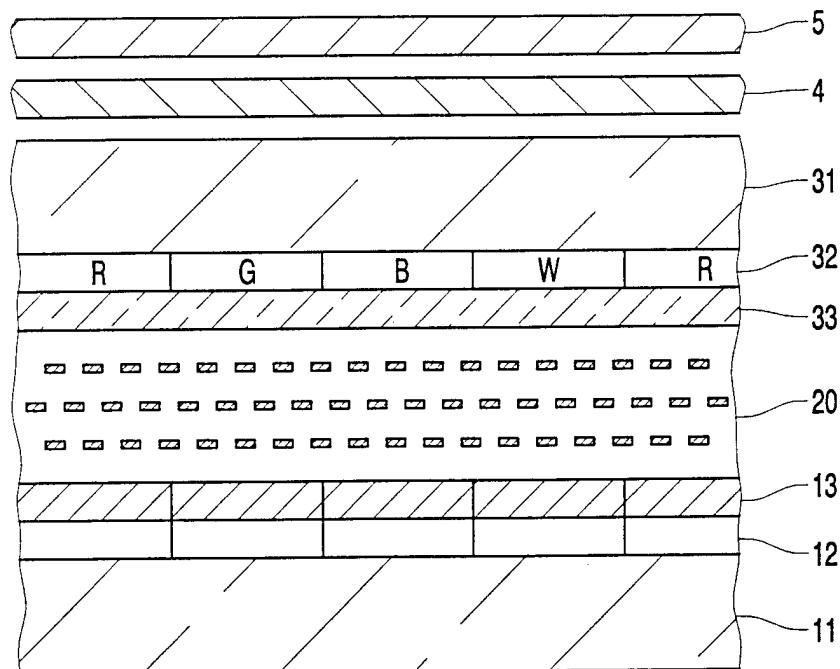
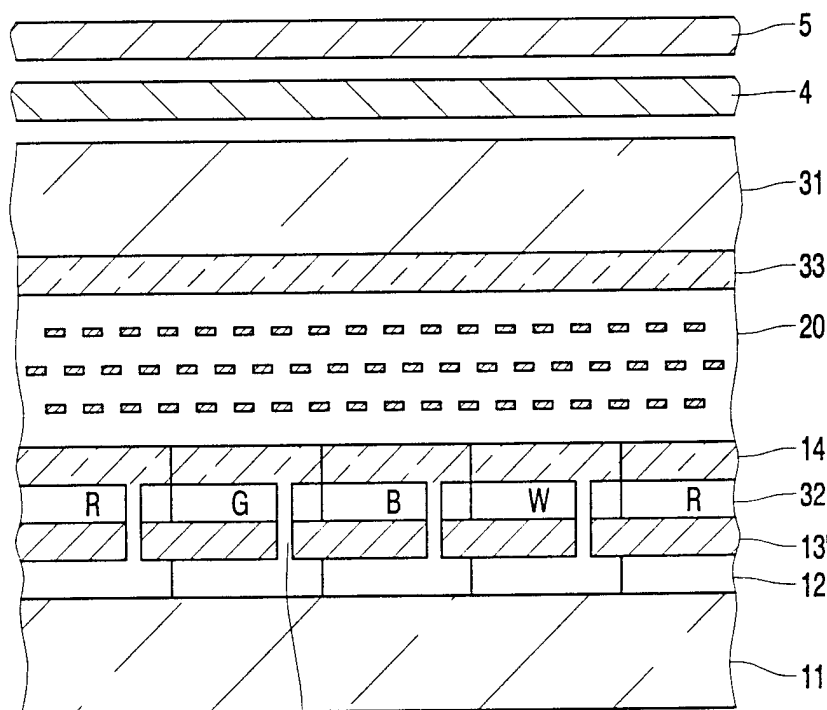


FIG. 1



14p

FIG. 2



2/3

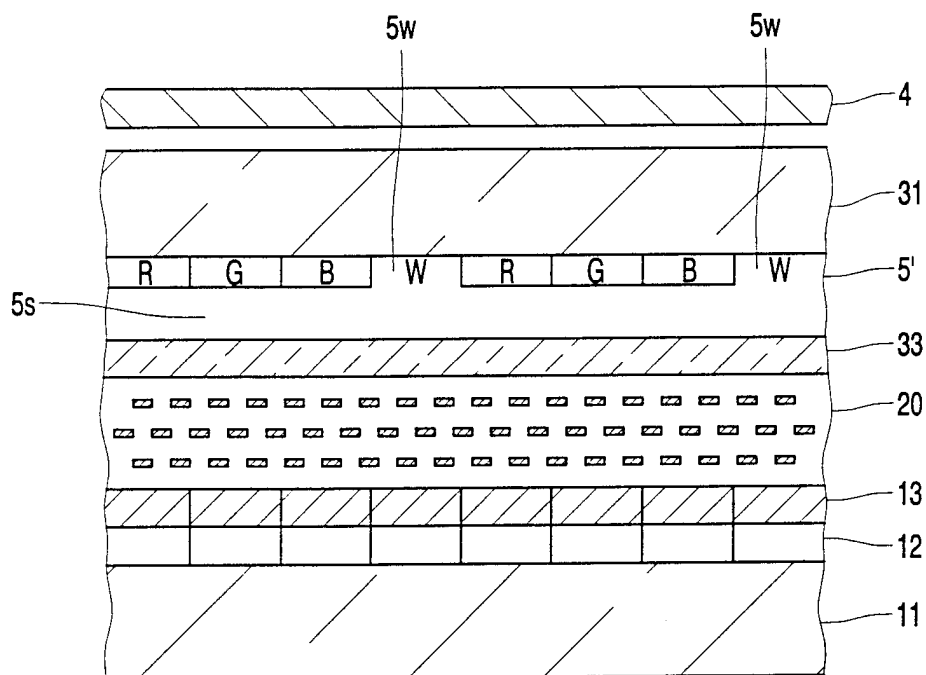


FIG. 3

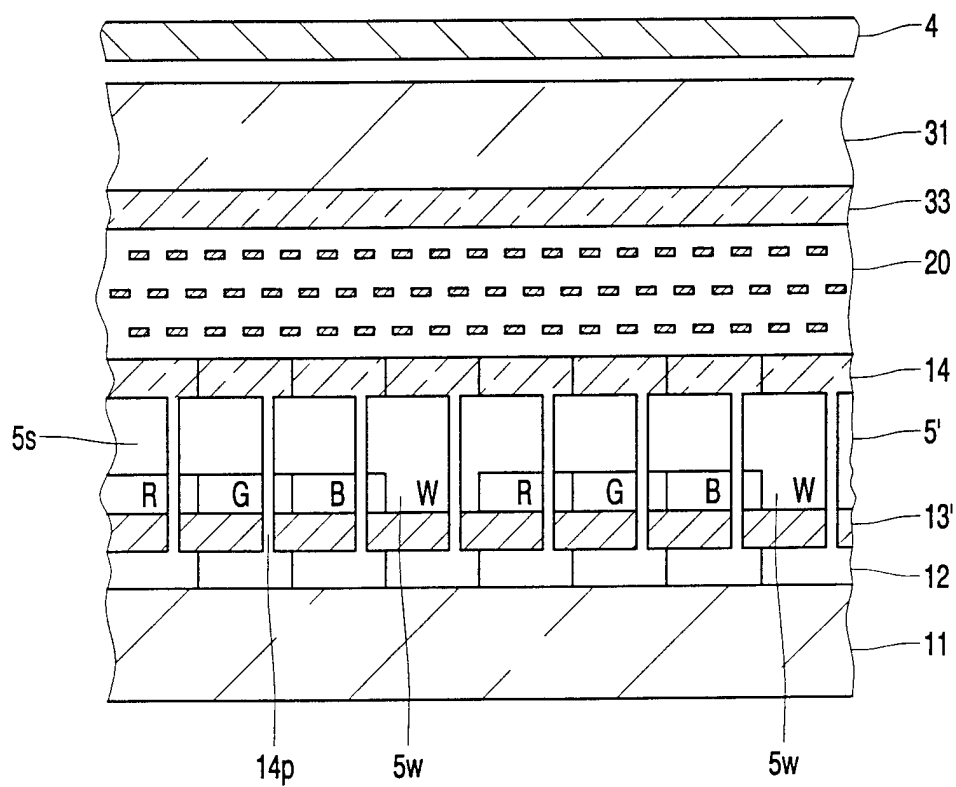


FIG. 4

3/3

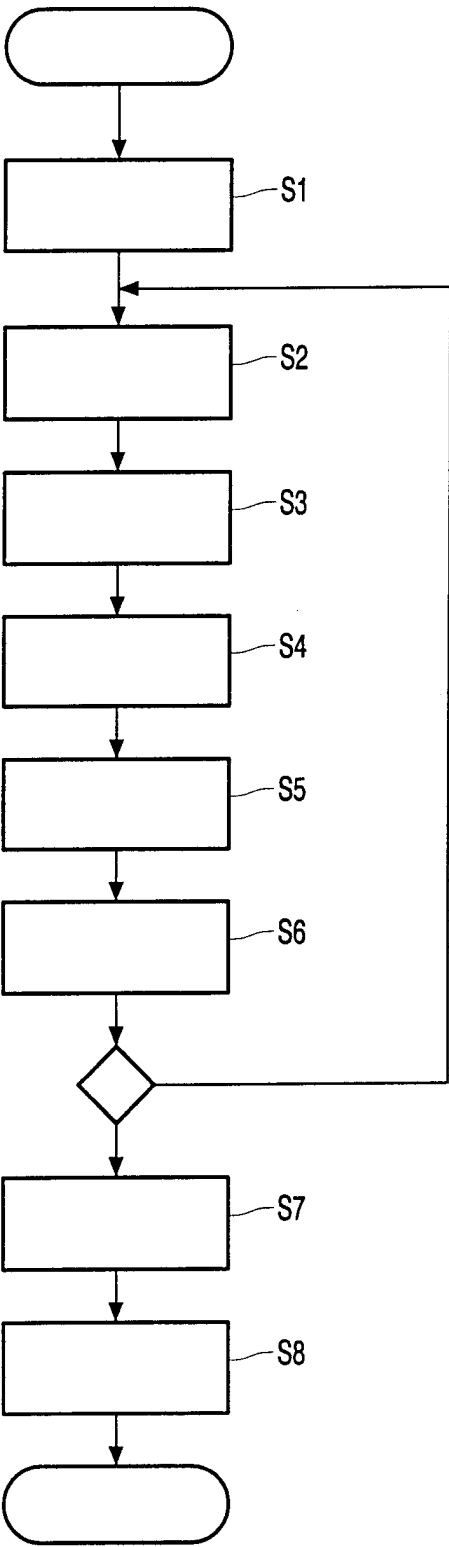


FIG. 5

专利名称(译)	反射型彩色液晶显示装置具有用于增加亮度的特殊种类的子像素		
公开(公告)号	<a href="#">EP1097401A2</a>	公开(公告)日	2001-05-09
申请号	EP2000940250	申请日	2000-05-12
[标]申请(专利权)人(译)	皇家飞利浦电子股份有限公司		
申请(专利权)人(译)	皇家飞利浦电子N.V.		
当前申请(专利权)人(译)	皇家飞利浦电子N.V.		
[标]发明人	YOSHIDA KEI		
发明人	YOSHIDA, KEI		
IPC分类号	G09F9/00 G02B5/02 G02F1/1335		
CPC分类号	G02F1/133504 G02F1/133514 G02F1/133553		
优先权	1999134983 1999-05-14 JP		
外部链接	<a href="#">Espacenet</a>		

#### 摘要(译)

一种反射式彩色显示装置，具有滤色器（32），该滤色器具有用于滤波或透射预定波长的光分量以增加亮度的部分（w）。