

(19)



(11)

EP 2 743 752 B1

(12)

EUROPEAN PATENT SPECIFICATION

(45) Date of publication and mention
of the grant of the patent:
17.05.2017 Bulletin 2017/20

(51) Int Cl.:
G02F 1/1333 ^(2006.01) **G06F 3/044** ^(2006.01)
G02F 1/1343 ^(2006.01) **G02F 1/1362** ^(2006.01)

(21) Application number: **13182182.9**

(22) Date of filing: **29.08.2013**

(54) **Touch sensor integrated type display device and method of manufacturing the same**

Anzeigevorrichtung mit integriertem Berührungssensor und Herstellungsverfahren dafür

Dispositif d'affichage de type intégré doté d'un capteur tactile et son procédé de fabrication

(84) Designated Contracting States:
**AL AT BE BG CH CY CZ DE DK EE ES FI FR GB
GR HR HU IE IS IT LI LT LU LV MC MK MT NL NO
PL PT RO RS SE SI SK SM TR**

(30) Priority: **11.12.2012 KR 20120143228**

(43) Date of publication of application:
18.06.2014 Bulletin 2014/25

(73) Proprietor: **LG Display Co., Ltd.
Seoul 150-721 (KR)**

(72) Inventors:
• **Kim, Cheolse**
704-792 Daegu (KR)
• **Kim, Juhan**
420-762 Bucheon-si, Gyeonggi-do (KR)

- **Kim, Hoonbae**
411-763 Goyang-si, Gyeonggi-do (KR)
- **Han, Sungsu**
413-012 Paju-si, Gyeonggi-do (KR)
- **Kim, Jinseong**
Gyeonggi-do, 411-763 (KR)
- **Han, Manhyeop**
121-798 Seoul (KR)

(74) Representative: **Viering, Jentschura & Partner
mbB
Patent- und Rechtsanwälte
Am Brauhaus 8
01099 Dresden (DE)**

(56) References cited:
EP-A1- 2 431 846 WO-A1-2012/118038
US-A1- 2011 157 039

Note: Within nine months of the publication of the mention of the grant of the European patent in the European Patent Bulletin, any person may give notice to the European Patent Office of opposition to that patent, in accordance with the Implementing Regulations. Notice of opposition shall not be deemed to have been filed until the opposition fee has been paid. (Art. 99(1) European Patent Convention).

EP 2 743 752 B1

Description

BACKGROUND OF THE INVENTION

Field of the invention

[0001] This disclosure relates to a touch sensor integrated type display device capable of perceiving touch of the display device, and a method of manufacturing the same.

Discussion of the Related Art

[0002] In recent years, various input devices such as a keyboard, a mouse, a joystick and a digitizer are used for constructing interfaces between users and home appliances or information telecommunication devices. However, when a user makes use of these input devices, user's dissatisfaction increases because the user is required to know how to use the input devices and the input devices occupy space. Therefore, a convenient and simple input device that can reduce erroneous operation is required. According to the requirement, there is proposed a touch sensor that can input information by directly contacting a screen with a user's finger or a pen.

[0003] The touch sensor has a simple configuration capable of reducing erroneous operations. The user can also perform an input action without using a separate input device, and can quickly and easily manipulate a device through contents displayed on a screen. Accordingly, the touch sensor has been applied to various display devices.

[0004] The touch sensor used in the display devices may be classified into an add-on type touch sensor, and an on-cell type touch sensor. The add-on type touch sensor is configured such that the display device and the add-on type touch sensor are individually manufactured and then the add-on type touch sensor is attached to an upper substrate of the display device. The on-cell type touch sensor is configured such that components constituting the on-cell type touch sensor are directly formed on the surface of an upper glass substrate of the display device.

[0005] There is a problem that a thickness of the display device increases because the add-on type touch sensor has the structure in which the add-on type touch sensor is mounted on the display device. Further, the visibility of the display device is reduced because of a reduction in a brightness of the display device due to the increased thickness.

[0006] On the other hand, the on-cell type touch sensor shares the glass substrate with the display device because the on-cell type touch sensor has the structure in which the on-cell type touch sensor is formed on the surface of the glass substrate of the display device. Therefore, a thickness of the display device using the on-cell type touch sensor is less than a thickness of the display device using the add-on type touch sensor. However, the

entire thickness of the display device using the on-cell type touch sensor increases because of a touch driving electrode layer, a touch sensing electrode layer, and an insulating layer for insulating the touch driving electrode layer and the touch sensing electrode layer which constitute the on-cell type touch sensor. Further, the number of processes and the manufacturing cost in the on-cell type touch sensor increase.

[0007] Accordingly, there is a need for a touch sensor integrated type display device capable of solving the problems of the above-described kinds of touch sensors.

[0008] WO 2012/118038 A1 and US 2013/342801 A1 describe a liquid crystal display device including a plurality of pixels which are arranged in a matrix manner for carrying out display, pixel electrodes provided for the respective plurality of pixels, each of the pixel electrodes having a comb-teeth shaped region, common electrodes which are provided for the respective plurality of pixels and face the respective pixel electrodes via an insulating layer, each of the common electrodes having a plate-like shape, a plurality of drive lines, and a plurality of receive lines which perpendicularly intersect with the plurality of drive lines, each of the common electrodes being connected with any of the plurality of drive lines or with any of the plurality of receive lines.

[0009] US 2011/157039 A1 describes a liquid crystal display device including a first auxiliary line connected to a blocking pattern and below a gate line, a second auxiliary line in each touch block, and located at the same layer as, the first auxiliary line being made of the same material as the gate line, a first connection pattern contacting the first and second auxiliary lines, a common electrode in each touch block, x and y sensing lines on the common electrode and overlapping the gate and data lines, respectively, a pixel electrode in each pixel region, connected to a drain electrode through a drain contact hole, and including a plurality of openings, and a second connection pattern contacting the first connection pattern and the x sensing line through first and second contact holes, respectively.

[0010] EP 2 431 846 A1 describes a liquid crystal display device with a built-in touch screen including a substrate having a pixel region, a thin film transistor formed in the pixel region, a first passivation layer formed on the thin film transistor, a first contact hole formed through a portion of the first passivation layer to expose the data electrode, a common electrode formed on at least one portion of the first passivation layer including inside the first contact hole, the common electrode operable to sense touch, a conductive line formed on at least one portion of the first passivation layer including inside the first contact hole, a second passivation layer formed on the common electrode and the conductive line, a second contact hole formed through a portion of the second passivation layer to expose the conductive line corresponding to the data electrode, and a pixel electrode electrically connected with the conductive line, the pixel electrode formed on the second passivation layer and inside the

second contact hole, wherein the second passivation layer and the pixel electrode are simultaneously formed by a mask process using a half-tone mask

SUMMARY OF THE INVENION

[0011] Embodiments of this disclosure provide a touch sensor integrated type display device capable of reducing its thickness and simplifying its manufacturing process by sharing a touch sensing element for recognizing a touch operation with a component of a display device, and a method of manufacturing the same.

[0012] Embodiments of this disclosure also provide a touch sensor integrated type display device capable of improving touch sensitivity by increasing mutual capacitance between touch driving electrodes and touch sensing electrodes, and a method of manufacturing the same.

[0013] In one aspect, there is a touch sensor integrated type display device provided according to claim 1.

[0014] In the touch sensor integrated type display device, the first plurality of electrodes are touch sensing electrodes, and the second plurality of electrodes are touch driving electrodes serving as common electrodes.

[0015] In the touch sensor integrated type display device, the first plurality of electrodes are touch driving electrodes, and the second plurality of electrodes are touch sensing electrodes serving as common electrodes.

[0016] The touch sensor integrated type display device further includes at least one first electrode resistance reducing wire formed on the each of the first electrodes, thereby reducing resistance of the first electrode.

[0017] The touch sensor integrated type display device includes a gate insulation layer between the data lines to cover the gate lines; a plurality of thin film transistors formed in pixel areas defined by crossings of the gate lines and the data lines, respectively; a first passivation layer covering the gate insulation layer on which the thin film transistors are formed; a plurality of pixel electrodes formed on the first passivation layer in the pixel areas, respectively; and a second passivation layer covering the plurality of first electrodes which are formed on the first passivation layer to be in parallel with the gate lines between the pixel electrodes neighbored to each other with a gate line therebetween, wherein the plurality of second electrodes are formed on the second passivation layer in at least two pixel areas with a gate line therebetween, a portion of each second electrode being overlapped with the pixel electrode to be in parallel with the data line, and wherein one of the first and second electrodes serve as common electrodes for driving the display device.

[0018] In the touch sensor integrated type display device, the first plurality of electrodes are touch sensing electrodes, and the second plurality of electrodes are touch driving electrodes serving as common electrodes.

[0019] In the touch sensor integrated type display device, the first plurality of electrodes are touch driving electrodes, and the second plurality of electrodes are touch

sensing electrodes serving as common electrodes.

[0020] The touch sensor integrated type display device further includes at least one first electrode resistance reducing wire formed on the each of the first electrodes, thereby reducing resistance of the first electrode.

[0021] In another aspect, there is a method of manufacturing a touch sensor integrated type display device provided according to claim 11.

[0022] In the method, the second electrodes are formed in parallel with the data lines, and formed in at least two pixel areas of pixel areas with the gate line therebetween, and defined by crossings of the gate lines and the data lines and have the gate line therebetween, the plurality of second electrode resistance reducing wires are overlapped with the plurality of second electrodes, respectively, thereby reducing resistance of the first electrode, the plurality of pixel electrodes are formed in the pixel areas; the plurality of first electrodes are formed in parallel with each other on the second passivation layer between the pixel electrodes which are neighbored to each other with the gate line therebetween, and the at least one first electrode resistance reducing wire is formed on each of the plurality of first electrodes, thereby reducing resistance of the first electrodes.

[0023] Preferred embodiments are described in the dependent claims.

[0024] According to the touch sensor integrated type display devices and methods of manufacturing the same, it is possible to remove the process for forming the independent touch sensing electrodes (or touch driving electrodes), thereby lessening a thickness of the display device by as much as the thickness of the touch sensing electrode because the common electrode for driving the display device can serve as touch sensing electrodes (or touch driving electrodes).

[0025] Furthermore, one touch sensing electrode (or one touch driving electrode) and one pixel electrode may be formed in one to one, otherwise one to n (wherein, n is two or more natural number). Also, the touch sensing and driving electrodes may be easily grouped using the sensing and driving electrode resistance reducing wires. Accordingly, it is possible to easily adjust a size of touch recognition block according to need, and improve touch sensitivity by increasing mutual capacitance between the touch driving electrodes and touch sensing electrodes because number of the touch driving electrodes and touch sensing electrodes are increased.

BRIEF DESCRIPTION OF THE DRAWINGS

[0026] The teachings of the embodiments can be readily understood by considering the following detailed description in conjunction with the accompanying drawings.

FIG. 1 is a block diagram schematically illustrating a touch sensor integrated type display device according to one embodiment of this disclosure; FIG. 2 is a partial exploded perspective view sche-

atically showing the display device shown in FIG. 1; FIG. 3 is a block diagram schematically illustrating a relationship between touch driving electrodes and touch sensing electrodes of a touch sensor integrated type display device according to one embodiment of this disclosure;

FIG. 4A is a top planar view illustrating a portion of a touch sensor integrated type display device according to one embodiment of this disclosure;

FIG. 4B is a cross-sectional view taken along lines I-I' and II-II' of FIG. 4A;

FIG. 5A is a top planar view illustrating a first mask process for manufacturing a touch sensor integrated type display device according to one embodiment of this disclosure;

FIG. 5B is a cross-sectional view taken along lines I-I' and II-II' shown in FIG. 5A;

FIG. 6A is a top planar view illustrating a second mask process for manufacturing a touch sensor integrated type display device according to one embodiment of this disclosure;

FIG. 6B is a cross-sectional view taken along lines I-I' and II-II' shown in FIG. 6A;

FIG. 7A is a top planar view illustrating a third mask process for manufacturing a touch sensor integrated type display device according to one embodiment of this disclosure;

FIG. 7B is a cross-sectional view taken along lines I-I' and II-II' shown in FIG. 7A;

FIG. 8A is a top planar view illustrating a fourth mask process for manufacturing a touch sensor integrated type display device according to one embodiment of this disclosure;

FIG. 8B is a cross-sectional view taken along lines I-I' and II-II' shown in FIG. 8A;

FIG. 9A is a top planar view illustrating a fifth mask process for manufacturing a touch sensor integrated type display device according to one embodiment of this disclosure;

FIG. 9B is a cross-sectional view taken along lines I-I' and II-II' shown in FIG. 9A;

FIG. 10A is a top planar view illustrating a sixth mask process for manufacturing a touch sensor integrated type display device according to one embodiment of this disclosure;

FIG. 10B is a cross-sectional view taken along lines I-I' and II-II' shown in FIG. 10A;

FIG. 11A is a top planar view illustrating a seventh mask process for manufacturing a touch sensor integrated type display device according to one embodiment of this disclosure;

FIG. 11B is a cross-sectional view taken along lines I-I' and II-II' shown in FIG. 11A;

FIG. 12A is a top planar view illustrating an eighth mask process for manufacturing a touch sensor integrated type display device according to one embodiment of this disclosure;

FIG. 12B is a cross-sectional view taken along lines

I-I' and II-II' shown in FIG. 12A;

FIG. 13A is a top planar view illustrating a ninth mask process for manufacturing a touch sensor integrated type display device according to one embodiment of this disclosure;

FIG. 13B is a cross-sectional view taken along lines I-I' and II-II' shown in FIG. 12A;

FIG. 14 is a block diagram schematically illustrating a touch sensor integrated type display device according to another embodiment of this disclosure;

FIG. 15 is a block diagram schematically illustrating a relationship between touch driving electrodes and touch sensing electrodes of a touch sensor integrated type display device according to another embodiment of this disclosure;

FIG. 16A is a top planar view illustrating a portion of a touch sensor integrated type display device according to another embodiment of this disclosure;

FIG. 16B is a cross-sectional view taken along lines I-I' and II-II' of FIG. 16A;

FIG. 17A is a top planar view illustrating a first mask process for manufacturing a touch sensor integrated type display device according to another embodiment of this disclosure;

FIG. 17B is a cross-sectional view taken along lines I-I' and II-II' shown in FIG. 16A;

FIG. 18A is a top planar view illustrating a second mask process for manufacturing a touch sensor integrated type display device according to another embodiment of this disclosure;

FIG. 18B is a cross-sectional view taken along lines I-I' and II-II' shown in FIG. 18A;

FIG. 19A is a top planar view illustrating a third mask process for manufacturing a touch sensor integrated type display device according to another embodiment of this disclosure;

FIG. 19B is a cross-sectional view taken along lines I-I' and II-II' shown in FIG. 19A;

FIG. 20A is a top planar view illustrating a fourth mask process for manufacturing a touch sensor integrated type display device according to another embodiment of this disclosure;

FIG. 20B is a cross-sectional view taken along lines I-I' and II-II' shown in FIG. 20A;

FIG. 21A is a top planar view illustrating a fifth mask process for manufacturing a touch sensor integrated type display device according to another embodiment of this disclosure;

FIG. 21B is a cross-sectional view taken along lines I-I' and II-II' shown in FIG. 21A;

FIG. 22A is a top planar view illustrating a sixth mask process for manufacturing a touch sensor integrated type display device according to another embodiment of this disclosure;

FIG. 22B is a cross-sectional view taken along lines I-I' and II-II' shown in FIG. 22A;

FIG. 23A is a top planar view illustrating a seventh mask process for manufacturing a touch sensor in-

egrated type display device according to another embodiment of this disclosure;

FIG. 23B is a cross-sectional view taken along lines I-I' and II-II' shown in FIG. 23A;

FIG. 24A is a top planar view illustrating a eighth mask process for manufacturing a touch sensor integrated type display device according to another embodiment of this disclosure; and

FIG. 24B is a cross-sectional view taken along lines I-I' and II-II' shown in FIG. 24A.

DETAILED DESCRIPTION OF THE EMBODIMENTS

[0027] Hereinafter, exemplary embodiments of this disclosure will be described in detail with reference to the accompanying drawings, wherein same reference numerals may be used to denote the same or substantially the same elements throughout the specification and the drawings.

[0028] A touch sensor integrated type display device according to one embodiment of this disclosure is described in detail with reference to FIGs. 1 to 3. FIG. 1 is a block diagram schematically illustrating a touch sensor integrated type display device according to one embodiment of this disclosure, FIG. 2 is a partial exploded perspective view schematically showing the display device shown in FIG. 1, and FIG. 3 is a block diagram schematically illustrating a relationship between touch driving electrodes and touch sensing electrodes of a touch sensor integrated type display device according to one embodiment of this disclosure.

[0029] In the following description, a touch sensor integrated type liquid crystal display device is used as an example of the touch sensor integrated type display device.

[0030] Referring to FIGs. 1 and 2, the touch sensor integrated type liquid crystal display according to one embodiment of this disclosure includes a liquid crystal display panel LCP, a host controller 10, a timing controller 11, a data driver 12, a gate driver 13, a power supply unit 15, and a touch recognition processor 17.

[0031] The liquid crystal display panel LCP includes a color filter array CFA and a thin film transistor (TFT) array TFTA with a liquid crystal layer interposed therebetween.

[0032] The TFT array TFTA includes a plurality of gate lines G1, G2, G3, ..., Gm-1, and Gm, which are formed parallel to one another on a first substrate SUBS 1 in a first direction (for example, x-axis direction), a plurality of data lines D1, D2, D3, ..., Dn-1, and Dn, which are formed parallel to one another in a second direction (for example, y-axis direction) to cross over the plurality of gate lines G1, G2, G3, ..., Gm-1, and Gm, TFTs respectively formed at crossings of the gate lines G1, G2, G3, ..., Gm-1, and Gm and the data lines D1, D2, D3, ..., Dn-1, and Dn, a plurality of pixel electrodes Px for charging a data voltage in liquid crystal cells, and common electrodes COM positioned to be opposite to the plurality of pixel electrodes Px.

[0033] The color filter array CFA includes black matrixes and color filters, which are formed on a second substrate SUBS2. Polarizing plates POL1 and POL2 are respectively attached to outer surfaces of the first substrate SUBS1 and the second substrate SUBS2 of the liquid crystal display panel LCP. Alignment layers (not shown) for setting a pre-tilt angle of liquid crystals are respectively formed on inner surfaces of the first substrate SUBS1 and the second substrate SUBS2 contacting the liquid crystals. A column spacer may be formed between the first substrate SUBS1 and the second substrate SUBS2 to maintain cell gaps of the liquid crystal cells.

[0034] A backlight unit (not shown) is disposed under the TFT array TFTA. The backlight unit includes a plurality of light sources to uniformly irradiate light onto the TFT array TFTA and the color filter array CFA. The backlight unit may be implemented as one of an edge type backlight unit and a direct type backlight unit. The light sources of the backlight unit may include one or at least two of a hot cathode fluorescent lamp (HCFL), a cold cathode fluorescent lamp (CCFL), an external electrode fluorescent lamp (EEFL), and a light emitting diode (LED).

[0035] The common electrode COM is formed on the second substrate SUBS2 in a vertical electric field driving manner such as a twisted nematic (TN) mode and a vertical alignment (VA) mode. Further, the common electrode COM is formed on the first substrate SUBS1 along with the pixel electrodes Px in a horizontal electric field driving manner such as an in-plane switching (IPS) mode and a fringe field switching (FFS) mode. In this disclosure, common electrode COM in the horizontal electric field driving manner is described as an example.

[0036] FIG. 3 is a top planar view schematically illustrating a relationship between touch driving electrodes and touch sensing electrodes (which serve as common electrodes) of the touch sensor integrated type display device according to one embodiment of this disclosure.

[0037] Referring to FIG. 3, the common electrode COM according to one embodiment of this disclosure is a plurality of electrodes divided into a first direction (for example, x axis direction) but connected to each other in a second direction (for example, y axis direction) crossing the first direction. The plurality of electrodes constituting the common electrode COM serve as a plurality of touch driving electrodes Tx11, Tx21, Tx31, ... Tx81; and Tx12, Tx22, Tx32, ... Tx82.

[0038] Among the plurality of touch driving electrodes Tx11, Tx21, Tx31, ... Tx81; and Tx12, Tx22, Tx32, ... Tx82, a first touch driving electrodes Tx11, Tx21, Tx31, ... Tx81 arranged in the second direction are connected to each other by at least one connection portion. And then a first resistance reducing wires TxW1, TxW2 and TxW3 are formed on the first touch driving electrodes Tx 11, Tx21, Tx31, ... and Tx81 to reduce resistance thereof. A second touch driving electrodes Tx12, Tx22, Tx32, ... Tx82 arranged in the second direction are connected to each other by at least one connection portion. And then

a second resistance reducing wires TxW4, TxW5 and TxW6 are formed on the second touch driving electrodes Tx12, Tx22, Tx32, ... and Tx82 to reduce resistance thereof. The first and second resistance reducing wires TxW1 to TxW3 and TxW4 to TxW6 are connected to the power supply unit 15 via the first routing wires TL1 and TL2, respectively.

[0039] The embodiment shown in FIG. 3 illustrates an example in which the touch driving electrodes consists of two touch driving lines. That is, the embodiment of FIG. 3 illustrates an example in which one touch driving line is constituted by the first touch driving electrodes Tx11, Tx21, ... and Tx81 and the first resistance reducing wires TxW1, TxW2 and TxW3, and another touch driving line is constituted by the second touch driving electrodes Tx12, Tx22, ... and Tx82 and the second resistance reducing wires TxW4, TxW5 and TxW6.

[0040] In a touch operation, a touch driving voltage Tsp is supplied to the first and second touch driving electrodes Tx11, Tx21, Tx31, ... and Tx81; and Tx12, Tx22, Tx32, ... and Tx82 from the power supply unit 15. And then in a display operation, a common voltage Vcom is supplied to the first and second touch driving electrodes Tx11, Tx21, Tx31, ... and Tx81; and Tx12, Tx22, Tx32, ... and Tx82 from the power supply unit 15.

[0041] In the embodiment shown in FIG. 3, three the first resistance reducing wires TxW1, TxW2 and TxW3 are used to constitute the first touch driving line and three the second resistance reducing wires TxW4, TxW5 and TxW6 are used to constitute the second touch driving line. However, this disclosure is not limited thereto. For example, one or two resistance reducing wires may be used to constitute each of the first and second touch driving lines. Otherwise four and more resistance reducing wires may be used to constitute each of the first and second touch driving lines.

[0042] On the other hand, touch sensing electrodes Rx1 to Rx8 constituting the touch sensor according to one embodiment of this disclosure are arranged in the first direction (for example, x axis direction) to cross over the first and second resistance reducing wires TxW1 to TxW3 and TxW4 to TxW6 between the first and second touch driving electrodes Tx11, Tx12 and Tx21, Tx22; Tx21, Tx22 and Tx31, Tx32; Tx31, Tx32 and Tx41, Tx42; Tx41, Tx42 and Tx51, Tx52; Tx51, Tx52 and Tx61, Tx62; Tx61, Tx62 and Tx71, Tx72; and Tx71, Tx72 and Tx81, Tx82. Another resistance reducing wires RxW1, RxW2, ... and RxW8 are formed on the touch sensing electrodes Rx1 to Rx8, respectively. Also, the touch sensing electrodes Rx1 to Rx8 are separated from each other, but they may be grouped by the resistance reducing wires RxW1 to RxW8. For example, the first to fourth touch sensing electrodes Rx1 to Rx4 are grouped by the third to sixth resistance reducing wires RxW1 to RxW4, and the fifth to eighth touch sensing electrodes Rx5 to Rx8 are grouped by the seventh to tenth resistance reducing wires RxW5 to RxW8. Accordingly, the first to eighth touch sensing electrodes Rx1 to Rx8 are grouped

by the third to tenth resistance reducing wires RxW1 to RxW8 to form two touch sensing lines including a first touch sensing line Rx1 to Rx4 and RxW1 to RxW4, and a second touch sensing line Rx5 to Rx8 and RxW5 and RxW8. The first sensing line Rx1 to Rx4 and RxW1 to RxW4 is connected to the touch recognition processor 17 via the second routing wire RL1, and the second sensing line Rx5 to Rx8 and RxW5 to RxW8 is connected to the touch recognition processor 17 via the second routing wire RL2.

[0043] The touch recognition processor 17 measures difference of mutual capacitance before and after a touch whenever the touch is performed, thereby capable of detecting the touch position because the touch sensing electrodes Rx1 to Rx8 are connected to the touch recognition processor 17.

[0044] The touch sensor according to one embodiment of this disclosure includes the touch driving electrodes Tx11, Tx21, ..., and Tx81; and Tx12, Tx22, ... and Tx82, and the touch sensing electrodes Rx1 to Rx8. And an unit of touch recognition block may be determined by appropriately grouping the touch driving electrodes Tx11, Tx21, ..., and Tx81; and Tx12, Tx22, ... and Tx82 and the touch sensing electrodes Rx1 to Rx8 using the first to eighth resistance reducing wires RxW1 to RxW8. In example shown in FIG. 3, four touch recognition block TU11, TU12, TU21 and TU22 are formed by eight touch sensing electrodes Rx1 to Rx8, sixteen touch driving electrodes Tx11, Tx12, Tx21, Tx22, ... Tx81 and Tx82, and fourteen resistance reducing wires TxW1 to TxW6 and RxW1 to RxW8.

[0045] More specifically, a first touch recognition block TU11 is determined by the first touch driving electrodes Tx11, Tx21, Tx31 and Tx41 connected to each other by the resistance reducing wires TxW1 to TxW3, and the first to fourth touch sensing electrodes Rx1 to Rx4 connected to each other by the resistance reducing wires RxW1 to RxW4. A second touch recognition block TU12 is determined by the second touch driving electrodes Tx12, Tx22, Tx32 and Tx42 connected to each other by the resistance reducing wires TxW4 to TxW6, and the first to fourth touch sensing electrodes Rx1 to Rx4 connected to each other by the resistance reducing wires RxW1 to RxW4. A third touch recognition block TU21 is determined by the first touch driving electrodes Tx51, Tx61, Tx71 and Tx81 connected to each other by the resistance reducing wires TxW1 to TxW3, and the fifth to eighth touch sensing electrodes Rx5 to Rx8 connected to each other by the resistance reducing wires RxW5 to RxW8. A fourth touch recognition block TU22 is determined by the second touch driving electrodes Tx52, Tx62, Tx72 and Tx82 connected to each other by the resistance reducing wires TxW4 to TxW6, and the fifth to eighth touch sensing electrodes Rx5 to Rx8 connected to each other by the resistance reducing wires RxW5 to RxW8.

[0046] The mentioned above touch driving electrodes Tx 11, Tx 12, Tx21, Tx22, ... Tx81 and Tx82 serve as

common electrodes COM, and formed on the first substrate SUB1 along with the pixel electrodes Px in a horizontal electrical field driving type display device. And the pixel electrodes Px are formed in areas defined by the crossing of the gate lines G1 to Gm and the data lines D1 to Dn as shown in FIG. 2.

[0047] Each of the touch driving electrodes Tx11, Tx12, Tx21, Tx22, ... Tx81 and Tx82 are formed be in opposite to several to several tens of the pixel electrodes Px, but may be formed be in opposite to one pixel electrode Px.

[0048] In the mentioned above touch sensor integrated type display device, one touch driving electrode and one pixel electrode may be formed in relation with one to one, otherwise one to n (wherein, n is two or more natural number). Also, each of the first and second resistance reducing wires TxW1 to TxW3 and TxW4 to TxW6 may be formed to be corresponding to one data line, otherwise several to several tens of the data lines. Also, each of the touch sensing electrodes Rx1 to Rx8 may be formed to be corresponding to one gate line, otherwise several to several tens of the gate lines. According to the construction, it is possible to improve touch sensitivity by increasing mutual capacitance between the touch driving electrodes and touch sensing electrodes because number of the touch driving electrodes and touch sensing electrodes are increased. Furthermore, it is possible to easily adjust number of the touch driving electrodes and touch sensing electrodes according to need because the touch driving electrodes and the touch sensing electrodes may be formed to be corresponding to the gate lines and data lines.

[0049] The touch sensor integrated type display device according to one embodiment of this disclosure will be described in detail with reference to FIGs. 4A and 4B.

[0050] Referring to FIGs. 4A and 4B, the touch sensor integrated type display device according to one embodiment of this disclosure includes gate lines GL and data lines DL formed on substrate SUB1 of a thin film transistor array TFTA to cross over to each other, thin film transistors TFTs respectively formed at crossings of the gate lines GL and the data lines DL, pixel electrodes Px formed in areas which are defined by crossings of the gate lines GL and the data lines DL, and a common electrode COM positioned to be opposite to the pixel electrodes Px. The common electrode COM serves as a touch driving electrode Tx. Accordingly, it is referred to as a common electrode COM, a touch driving electrode Tx, or a touch common electrodes COM which serves as a touch driving electrode Tx according to need.

[0051] In the construction, the thin film transistors TFTs may include a gate electrode G extended from the gate line GL, an active layer A formed on a gate insulation layer GI covering the gate line GL and the gate electrode G so as to overlap with the gate electrode G, a source electrode S extended from the data line D1 which is formed on a first passivation layer PAS1 covering the active layer A, and a drain electrode opposite to the

source electrode S.

[0052] The common electrode COM which serves as the touch driving electrode Tx is formed on the first passivation layer PAS1 covering the thin film transistor TFT and the data line DL. In an example shown in FIGs. 4A and 4B, one touch driving common Tx is formed to be corresponding to three pixel electrodes Px, but this disclosure is not limited thereto. For example, the touch driving electrode Tx and the pixel electrode Tx are formed in one-to-one, or one-to-n (wherein "n" is natural number) correspondence.

[0053] First and second resistance reducing wires (hereinafter referred to as "driving electrode resistance reducing wire") TxW (TxW1 to TxW3 and TxW4 to TxW6 of FIG. 3) are formed on the first and second touch driving electrodes Tx (Tx11, Tx21, ...Tx81; and Tx12, Tx22, ... Tx82 of FIG. 3), respectively, to reduce the resistance of the first and second touch driving electrodes Tx (Tx11, Tx21, ...Tx81; and Tx12, Tx22, ... Tx82 of FIG. 3).

[0054] A second passivation layer PAS2 is formed on the first passivation layer PAS1 on which the driving electrode resistance reducing wire TxW and the touch driving electrode Tx are formed. A first and second contact holes CH1 and CH2 passing through the first and second passivation layer PAS1 and PAS2 are formed to expose a portion of the drain electrode D.

[0055] Third and fourth resistance reducing wires (hereinafter referred to as "driving electrode resistance reducing wire") RxW (RxW1 to RxW4 and RxW5 to RxW8 of FIG. 3) are formed in parallel with the gate line GL (that is, in x axis direction) on the second passivation PAS2 in which the first and second contact holes CH1 and CH2 are formed. Pixel electrodes Tx are formed on the second passivation layer PAS2 in pixel areas defined by the crossing of the gate lines GL and the data lines DL. Touch sensing electrodes Rx (Rx1 to Rx8 of FIG. 3) are formed on the second passivation layer PAS2 in parallel with the gate line GL to cover the sensing electrode resistance reducing wires RxW between the pixel electrodes Px which are neighbored to each other in up and down in the drawings. The example of FIG. 4A shows that the touch sensing electrode Rx is overlapped with a portion of the gate electrode G and the source electrode S, but that the touch sensing electrode Rx may be overlapped with all of the source electrode S and a portion of the drain electrode D.

[0056] In the touch sensor integrated type display device according to one embodiment of this disclosure, the touch driving electrode Tx formed on the first passivation layer PAS1 has no slit or openings, and the pixel electrode Tx has slits or openings SL as shown in FIGs. 4A and 4B. However this disclosure is no limited thereto. For example, if one of the touch driving electrode Tx and touch sensing electrode Rx has slits or openings, the other of the touch driving electrode Tx and touch sensing electrode Rx has no slits or openings.

[0057] In the touch sensor integrated type display device according to one embodiment of this disclosure,

there is described that the common electrode COM serves as the touch driving electrode Tx. However the common electrode COM may serve as the touch sensing electrode Rx if the common voltage Vcom is supplied to the touch common electrode Tx from the power supply unit 15 in a display driving operation, a touch driving voltage Vtsp is supply to the touch sensing electrode Rx from the power supply unit 15 in a touch driving operation, and the common electrode COM is connected to the touch recognition processor 17 during the touch driving operation.

[0058] Again, referring to FIGs. 1 and 2, the gate driver 13 sequentially outputs a gate pulse (or a scan pulse) under the control of the timing controller 11 during a display driving operation. The gate driver 13 shifts a swing voltage of the gate pulse to a gate high voltage VGH and a gate low voltage VGL. The gate pulse output from the gate driver 13 is synchronized with the data voltage output from the data driver 12 and is sequentially supplied to the gate lines G1 to Gm. The gate high voltage VGH is equal to or greater than a threshold voltage of the thin film transistor TFT, and the gate low voltage VGL is less than the threshold voltage of the thin film transistor TFT. A plurality of gate driving integrated circuits (ICs) of the gate driver 13 may be connected to the gate lines G1 to Gm formed on the first substrate SUBS1 of the TFT array TFTA through a tape automated bonding (TAB) process. Alternatively, the gate driving ICs of the gate driver 13 may be directly formed on the first substrate SUBS1 of the TFT array TFTA along with pixels through a gate-in-panel (GIP) process.

[0059] The data driver 12 samples and latches digital video data RGB under the control of the timing controller 11. The data driver 12 converts the digital video data RGB into positive and negative gamma compensation voltages GMA1 to GMA_n and inverts a polarity of the data voltage. The positive and negative data voltages output from the data driver 12 are synchronized with the gate pulses output from the gate driver 13. A plurality of source driving ICs of the data driver 12 may be connected to the data lines D1 to D_n formed on the first substrate SUBS1 of the TFT array TFTA through a chip-on glass (COG) process or the TAB process. The source driving ICs may be integrated inside the timing controller 11 and thus may be implemented as a single chip IC along with the timing controller 11.

[0060] The timing controller 11 generates timing control signals for controlling operation timings of the gate driver 13 and the data driver 12 using timing signals Vsync, Hsync, DE, and MCLK, which are received from the external host controller 10 and are used to drive the touch sensor integrated type liquid crystal display. The timing control signals include a gate timing control signal for controlling the operation timing of the gate driver 13 and a data timing control signal for controlling the operation timing of the data driver 12 and the polarity of the data voltage.

[0061] The gate timing control signal includes a gate

start pulse GSP, a gate shift clock GSC, a gate output enable GOE, and the like. The gate start pulse GSP is applied to a first gate driving IC of the gate driver 13 to output a first gate pulse in each frame period and controls a shift start timing of the first gate driving IC. The gate shift clock GSC is commonly input to the gate driving ICs of the gate driver 13 and also shifts the gate start pulse GSP. The gate output enable GOE controls output timings of the gate driving ICs of the gate driver 13.

[0062] The data timing control signal includes a source start pulse SSP, a source sampling clock SSC, a polarity control signal POL, a source output enable SOE, and the like. The source start pulse SSP is applied to a first source driving IC of the data driver 12 to firstly sample the data and controls a data sampling start timing. The source sampling clock SSC controls a sampling timing of data inside the source driving ICs based on a rising or falling edge thereof. The polarity control signal POL controls the polarity of the data voltage output from the source driving ICs. The source output enable SOE controls output timings of the source driving ICs. If the digital video data RGB is input to the data driver 102 through a mini low voltage differential signaling (LVDS) interface, the source start pulse SSP and the source sampling clock SSC may be omitted.

[0063] The power supply unit 15 is implemented as a DC-DC converter including a pulse width modulation (PWM) circuit, a boost converter, a regulator, a charge pump, a voltage divider, an operational amplifier, etc. The power supply unit 15 regulates a voltage input from the host controller 10 and generates voltages required to drive the liquid crystal display panel LCP, the data driver 12, the gate driver 13, the timing controller 11, and the backlight unit (not shown).

[0064] The voltages generated by the power supply unit 15 include a high potential power voltage VDD, the gate high voltage VGH, the gate low voltage VGL, a common voltage Vcom, positive and negative gamma reference voltages GMA1 to GMA_n, a touch driving voltage Vtsp, and the like. The common voltage Vcom is supplied to the common electrodes COM under the control of the host controller 10 during a display driving operation. Alternatively, the common voltage Vcom may be supplied to the common electrode COM under the control of the timing controller 11 during a display driving operation. The touch driving voltage Vtsp is supplied to the touch driving electrodes Tx11, Tx21, ...Tx81; and Tx12, Tx22, ...Tx82 under the control of the host controller 10 during a touch driving operation. Alternatively, the touch driving voltage Vtsp may be supplied to the touch driving electrodes Tx11, Tx21, ...Tx81; and Tx 12, Tx22, ...Tx82 under the control of the timing controller 11 during a touch driving operation.

[0065] In the embodiment shown in FIG. 1, the touch driving voltage Vtsp is supplied to the touch driving electrodes Tx11, Tx21, ...Tx81; and Tx12, Tx22, ...Tx82 through the power supply unit 15, but this disclosure is not limited thereto. For example, the touch driving voltage

Vtsp is supply to the touch driving electrodes Tx11, Tx21, ...Tx81; and Tx12, Tx22, ...Tx82 through the touch recognition processor 17 under the control of the host controller 10 or the timing controller 11.

[0066] The host controller 10 transfers the digital video data RGB of an input image and the timing signals Vsync, Hsync, DE, and MCLK driving the touch sensor integrated type liquid crystal display to the timing controller 11 through an interface, such as the LVDS interface and a transition minimized differential signaling (TMDS) interface. When the touch sensor integrated type liquid crystal display is driven so as to display the image on its screen, the host controller 10 supplies control signal Vin for controlling the power supply unit 15, so that the common voltage Vcom can be supplied to the common electrode COM. When the touch sensor integrated type liquid crystal display is driven for the touch recognition, the host controller 10 supplies a control signal Vin for controlling the power supply unit 15, so that the touch driving voltage Vtsp can be supplied to the touch driving electrodes Tx11, Tx21, ...Tx81; and Tx12, Tx22, ...Tx82.

[0067] The touch recognition processor 17 differentially amplifies a difference voltage between a voltage of an initial capacitance of each the touch sensing electrodes Rx1 to Rx8 measured through the second routing wires RL1 and RL2 connected to the touch sensing electrodes Rx1 to Rx8 before a touch operation and a voltage of a touch capacitance of each the touch sensing electrodes Rx1 to Rx8 measured through the second routing wires RL1 and RL2 after the touch operation. The touch recognition processor 17 then converts the result of a differential amplification into digital data. The touch recognition processor 17 decides a touch position based on a difference between the initial capacitance and the touch capacitance using a touch recognition algorithm and outputs touch coordinate data indicating the touch position to the host controller 10.

[0068] As mentioned above, the first and second touch driving electrodes Tx11, Tx21, ...Tx81; and Tx12, Tx22, ...Tx82 according to one embodiment of this disclosure constitute touch driving lines in y axis direction, and the touch sensing electrodes Rx1 to Rx8 constitute touch sensing lines in x axis direction so that they cross over each other. Accordingly, if a touch is performed on a particular position of the display device, there is a variation of mutual capacitance between the touch driving lines and the touch sensing lines. It is possible to detect the touch position by measuring the variation of mutual capacitance.

[0069] In particular, it is possible to improve touch sensitivity by increasing mutual capacitance between the touch driving electrodes and touch sensing electrodes because number of the touch driving electrodes and touch sensing electrodes are increased by forming the touch driving electrode to be corresponding to the pixel electrode and forming the touch sensing electrode to be corresponding to the gate line. Furthermore, it is advantageous in that it is possible to easily manufacture a touch

sensor integrated type display device having various touch recognition blocks because a size of the touch recognition block is easily adjustable by using the touch driving electrode resistance reducing wires and the touch sensing electrode resistance reducing wires.

[0070] Hereinafter, a method of manufacturing the touch sensor integrated type display device according to one embodiment of this disclosure will be described with reference to FIGs. 5A to 13B.

[0071] FIG. 5A is a top planar view illustrating a first mask process for manufacturing the touch sensor integrated type display device according to one embodiment of this disclosure, and FIG. 5B is a cross-sectional view taken along lines I-I' and II-II' shown in FIG. 5A.

[0072] Referring to FIGs. 5A and 5B, a first metal layer (gate metal layer) is entirely deposited on a first substrate SUB through a deposition process as a first conductive layer. A gate line GL and a gate electrode G extended from the gate line GL are formed on the substrate SUB1 using the first mask process.

[0073] More specifically, a gate metal layer is formed on the entire surface of the substrate SUB1 as a first conductive layer by a deposition process such as a sputtering process. After a photo resist is entirely applied to the substrate SUB1 on which the first conductive layer is deposited, a first photo resist pattern (not shown) exposing a portion of the gate metal layer is formed through a photolithography process using a first mask. The first gate metal layer exposed via the first photo resist pattern is removed by a wet etching. The first photo resist pattern is then removed by an ashing process, thereby forming the gate line GL and the gate electrode G on the substrate SUB 1. The gate metal layer may be selected from a metal material such as Al, AlNd, Cu, Cr, Mo, or MoTi,.

[0074] FIG. 6A is a top planar view illustrating a second mask process for manufacturing the touch sensor integrated type display device according to one embodiment of this disclosure, and FIG. 6B is a cross-sectional view taken along lines I-I' and II-II' shown in FIG. 6A.

[0075] Referring to FIGs. 6A and 6B, a gate insulation layer GI is formed on an entire surface of the substrate SUB1 on which the gate line GL and the gate electrode G are formed. A semiconductor layer is then entirely formed on the gate insulation layer GI. A photo resist layer is entirely formed on the semiconductor layer, and a second photo resist pattern (not shown) is formed to expose regions of the semiconductor layer excluding a channel region through a photolithography process using a second mask. The semiconductor layer exposed via the second photo resist pattern is removed by an etching process. The second photo resist pattern is then removed by an ashing process, thereby forming the semiconductor pattern A.

[0076] FIG. 7A is a top planar view illustrating a third mask process for manufacturing the touch sensor integrated type display device according to one embodiment of this disclosure, and FIG. 7B is a cross-sectional view taken along lines I-I' and II-II' shown in FIG. 7A.

[0077] Referring to FIGs. 7A and 7B, a second metal layer (data metal layer) is formed as a second conductive layer on the gate insulation layer GI on which the semiconductor pattern A is formed. And then a first conductive pattern group including a data line DL, a source electrode S extended from the data line DL, and a drain electrode D opposite to the source electrode S are formed by patterning the data metal layer through a photolithography process.

[0078] More specifically, a data metal layer is formed as a second conductive layer on the gate insulation layer GI on which the semiconductor pattern A is formed. A photo resist is entirely deposited on the data metal layer, and a third photo resist pattern (not shown) is formed through a photolithography process using a third mask. The third photo resist pattern exposes regions of the data metal layer excluding regions on which a data line, a source electrode and a drain electrode are to be formed. The data line DL and a thin film transistor TFT including the source electrode S extended from the data line DL and a drain electrode D are formed by etching the data metal layer exposed via the third photo resist pattern and removing the third photo resist pattern remained on the data metal layer. The data line DL crosses over the gate line GL with the gate insulation layer GI therebetween. The source electrode S is extended from the data line DL and the drain electrode D is opposite to the source electrode S.

[0079] FIG. 8A is a top planar view illustrating a fourth mask process for manufacturing the touch sensor integrated type display device according to one embodiment of this disclosure, and FIG. 8B is a cross-sectional view taken along lines I-I' and II-II' shown in FIG. 8A.

[0080] Referring to FIGs. 8A and 8B, a first passivation layer PAS1 is entirely formed on the gate insulation layer GI on which the first conductive pattern group is formed. And then first contact hole CH1 is formed to expose a portion of the drain electrode D by etching the first passivation layer PAS 1 using a fourth mask process.

[0081] More specifically, a first passivation layer PAS1 is entirely formed on the gate insulation layer GI on which the data line DL and the thin film transistor TFT are formed. A photo resist layer is entirely formed on the first passivation layer PAS 1, and a fourth photo resist pattern (not shown) is formed to expose a portion of the drain electrode D through a photolithography process using a fourth mask. A first contact hole CH1 exposing the portion of the drain electrode D is then formed in the first passivation layer PAS1 by etching the first passivation layer PAS 1 exposed via the fourth photo resist pattern and removing the fourth photo resist pattern. The first passivation layer PAS1 may be made of a low dielectric organic material such as polyanionic cellulose (PAC).

[0082] FIG. 9A is a top planar view illustrating a fifth mask process for manufacturing the touch sensor integrated type display device according to one embodiment of this disclosure, and FIG. 9B is a cross-sectional view taken along lines I-I' and II-II' shown in FIG. 9A.

[0083] Referring to FIGs. 9A and 9B, a first transparent conductive layer is entirely formed as a third conductive layer on the first passivation layer PAS 1 in which the first contact hole CH1 is formed. And then common electrodes COM which serve touch driving electrodes Tx are formed by patterning the first transparent conductive layer using a fifth mask process.

[0084] More specifically, a first transparent conductive layer is entirely formed as a third conductive layer on the first passivation layer PAS1 in which the first contact hole CH1 is formed through a deposition process such as a plasma-enhanced chemical vapor deposition (PECVD). A photo resist layer is entirely formed on the first transparent conductive layer, and a fifth photo resist pattern (not shown) is formed through a photolithography process using a fifth mask. The fifth photo resist pattern exposes regions of the first transparent conductive layer excluding regions on which common electrodes are to be formed. The common electrodes COM which serves as the touch driving electrodes Tx are formed by etching the first transparent conductive layer exposed via the fifth photo resist pattern and removing the fifth photo resist pattern remaining on the first transparent conductive layer. The common electrodes COM which serve as the touch driving electrodes Tx may be formed to have a size as described in relation with FIGs. 1 to 3. The common electrodes COM may be made of a transparent conductive material such as indium tin oxide (ITO), indium zinc oxide (IZO), and gallium-doped zinc oxide (GZO).

[0085] FIG. 10A is a top planar view illustrating a sixth mask process for manufacturing the touch sensor integrated type display device according to one embodiment of this disclosure, and FIG. 10B is a cross-sectional view taken along lines I-I' and II-II' shown in FIG. 10A.

[0086] Referring to FIGs. 10A and 10B, a third metal layer is entirely formed as fourth conductive layer on the first passivation layer PAS 1 on which the common electrodes COM which serve as touch driving electrode Tx are formed through a deposition process such as a sputtering. And then touch driving electrode resistance reducing wires TxW are formed on the first passivation layer PAS 1 in parallel with the data line using a sixth mask process.

[0087] More specifically, through a deposition process such as a sputtering, a third metal layer is entirely formed as fourth conductive layer on the first passivation layer PAS 1 on which the common electrodes COM which serve as touch driving electrode Tx are formed. A photo resist is entirely formed on the fourth conductive layer, and then touch driving electrode resistance reducing wires TxW are formed by patterning the fourth conductive layer through a photolithograph process using a sixth mask so that the touch driving electrode resistance reducing wires TxW are in parallel with the data line DL and contacted with the common electrodes COM which serve as touch driving electrodes Tx. It is possible to improve aperture ratio of the display device if the touch driving electrode resistance reducing wires TxW are

formed to be overlapped with the data line DL. The fourth conductive layer is selected from a metal material such as Al, AlNd, Cu, Cr, Mo, or MoTi.

[0088] In the above description, the touch driving electrode Tx and the touch driving electrode resistance reducing wires TxW are respectively formed by two mask processes. However the touch driving electrode Tx and the touch driving electrode resistance reducing wires TxW may be formed through a photolithography process using a halftone mask. Provided that the process using the halftone mask is used, the touch driving electrode Tx and the touch driving electrode resistance reducing wires TxW may be formed with one mask process. The description about the process using the halftone mask is omitted because it is known as the related art.

[0089] FIG. 11A is a top planar view illustrating a sixth mask process for manufacturing the touch sensor integrated type display device according to one embodiment of this disclosure, and FIG. 11B is a cross-sectional view taken along lines I-I' and II-II' shown in FIG. 11A.

[0090] Referring FIGs. 11A and 11B, a second passivation layer PAS2 is formed on the first passivation layer PAS1 on which the common electrode COM serving as the touch driving electrode Tx and the touch driving electrode resistance reducing wires TxW are formed. And then, a second contact hole CH2 passing through the second passivation layer PAS2 is formed to expose a portion of the drain electrode D by etching the second passivation PAS2 using a seventh mask process.

[0091] More specifically, a second passivation layer PAS2 is entirely formed on the first passivation layer PAS1 on which the common electrode COM serving as the touch driving electrode Tx and the touch driving electrode resistance reducing wires TxW are formed. A photo resist is entirely formed on the second passivation layer PAS2, and then a seventh photo resist pattern (not shown) is formed to expose a portion of the drain electrode D through a photolithography process using a seventh mask. The second passivation layer PAS2 exposed via the seventh photo resist pattern is etched, and a contact hole CH2 is formed by removing the seventh photo resist pattern. The second passivation layer PAS2 may be made of a low dielectric organic material such as polyanionic cellulose (PAC).

[0092] In this embodiment, the second contact hole CH2 is formed by etching the second passivation layer PAS2 filled into the first contact hole CH1 of the first passivation layer PAS1. However, this disclosure is not limited thereto. For example, the fourth mask process may be omitted because the first and second contact holes CH1 and CH2 may be formed at one time with one mask process. That is, the first and second contact holes CH1 and CH2 may be formed at one time by etching the first and second passivation layers PAS1 and PAS2.

[0093] FIG. 12A is a top planar view illustrating an eighth mask process for manufacturing the touch sensor integrated type display device according to one embodiment of this disclosure, and FIG. 12B is a cross-sectional view

taken along lines I-I' and II-II' shown in FIG. 12A.

[0094] Referring to FIGs. 12A and 12B, a fourth metal layer as fifth conductive layer is deposited on the second passivation layer PAS2 with the second contact hole CH2. And then a sensing electrode resistance reducing wire RxW is formed in parallel with the gate line GL by etching the fifth conductive layer through a eighth mask process.

[0095] More specifically, a fourth metal layer as fifth conductive layer is deposited on the second passivation layer PAS2 with the second contact hole through a deposition process such as a sputtering process. A photo resist is entirely formed on the fifth conductive layer, and an eighth photo resist pattern (not shown) is formed to expose portions excluding an area where a sensing electrode resistance reducing wire RxW is to be formed through a photolithography process using a eighth mask. The fifth conductive layer exposed via the eighth photo resist pattern is etched, and a sensing electrode resistance reducing wire RxW is formed by removing the eighth photo resist pattern. The fifth conductive layer is selected from a metal material such as Al, AlNd, Cu, Cr, Mo, or MoTi.

[0096] FIG. 13A is a top planar view illustrating a ninth mask process for manufacturing the touch sensor integrated type display device according to one embodiment of this disclosure, and FIG. 13B is a cross-sectional view taken along lines I-I' and II-II' shown in FIG. 13A.

[0097] Referring to FIGs. 13A and 13B, a second transparent conductive layer as a sixth conductive layer is deposited on the second passivation layer PAS2 on which the sensing electrode resistance reducing wire RxW is formed. And then a sensing electrode Rx and a pixel electrode resistance reducing wire RxW are formed by etching the sixth conductive layer through a ninth mask process.

[0098] More specifically, a second transparent conductive layer as a sixth conductive layer is deposited on the second passivation layer PAS2 on which the sensing electrode resistance reducing wire RxW is formed through a deposition process such as a sputtering process. A photo resist is entirely formed on the sixth conductive layer, and a ninth photo resist pattern (not shown) is formed to expose portions excluding a pixel area defined by crossing of the data line DL and gate line GL and an area where a touch sensing electrode is to be formed through a photolithography process using a ninth mask. Pixel electrodes Px are formed in pixels areas defined by crossing of the data lines DL and the gate lines GL by etching the second transparent conductive layer exposed via the ninth photo resist pattern and removing the ninth photo resist pattern. At the same time, touch sensing electrodes Rx are formed between the pixel areas disposed to be neighbored to each other with the gate line GL therebetween. The pixel electrode Px is formed to have a plurality of slits or openings SL. The second transparent conductive layer may be made of a transparent conductive material such as indium tin oxide

(ITO), indium zinc oxide (IZO), and gallium-doped zinc oxide (GZO).

[0099] In the description for the eighth and ninth mask processes, the sensing electrode resistance reducing wire RxW, the touch sensing electrode Rx and the pixel electrode Px are formed by two mask processes. However the sensing electrode resistance reducing wire RxW, the touch sensing electrode Rx and the pixel electrode Px may be formed through a photolithography process using a halftone mask. Provided that the process using the halftone mask is used, the sensing electrode resistance reducing wire RxW, the touch sensing electrode Rx and the pixel electrode Px may be formed with one mask process. The description about the process using the halftone mask is omitted because it is known as the related art.

[0100] A touch sensor integrated type display device according to another embodiment of this disclosure is described in detail with reference to FIGs. 14 and 15. FIG. 14 is a block diagram schematically illustrating a touch sensor integrated type display device according to another embodiment of this disclosure, and FIG. 15 is a block diagram schematically illustrating a relationship between touch driving electrodes and touch sensing electrodes of a touch sensor integrated type display device according to another embodiment of this disclosure.

[0101] Referring to FIGs. 14 and 15, the touch sensor integrated type liquid crystal display according to another embodiment of this disclosure includes a liquid crystal display panel LCP, a host controller 10, a timing controller 11, a data driver 12, a gate driver 13, a power supply unit 15, and a touch recognition processor 17.

[0102] In the touch sensor integrated type liquid crystal display according to another embodiment of this disclosure, the description of the liquid crystal display panel LCP is omitted because it is substantially same to the liquid crystal display panel LCP according to the one embodiment of this disclosure.

[0103] Referring to FIGs. 14 and 15, the common electrode COM according to another embodiment of this disclosure is a plurality of electrodes divided into a first direction (for example, x axis direction) and a second direction (for example, y axis direction) crossing the first direction but connected to each other in the second direction. The plurality of electrodes constituting the common electrode COM serve as a plurality of touch sensing electrodes Rx11, Rx21, Rx31, ... Rx81; and Rx12, Rx22, Rx32, ... Rx82.

[0104] Each of the touch sensing electrodes Rx11, Rx21, Rx31, ... Rx81; and Rx12, Rx22, Rx32, ... Rx82 is formed to include resistance reducing wires for reducing resistance of them. More specifically, among the plurality of touch sensing electrodes Rx11, Rx21, Rx31, ... Rx81; and Rx12, Rx22, Rx32, ... Rx82, first touch sensing electrodes Rx11, Rx21, Rx31, ... Rx81 arranged in the second direction are connected to each other by at least one connection portion. And then first resistance reducing wires RxW1, RxW2 and RxW3 are formed on the first

touch sensing electrodes Rx11, Rx21, Rx31, ... and TxR1 to reduce resistance thereof. Also second touch sensing electrodes Rx12, Rx22, Rx32, ... Rx82 arranged in the second direction are connected to each other by at least one connection portion. And then second resistance reducing wires RxW4, RxW5 and RxW6 are formed on the second touch sensing electrodes Rx12, Rx22, Rx32, ... and Rx82 to reduce resistance thereof.

[0105] The embodiment shown in FIG. 15 illustrates an example in which the touch sensing electrodes constitute two touch sensing lines. That is, the embodiment of FIG. 15 illustrates an example in which one touch sensing line is constituted by the first touch sensing electrodes Rx11, Rx21, ... and Rx81 and the first resistance reducing wires RxW1, RxW2 and RxW3, and another touch sensing line is constituted by the second touch sensing electrodes Rx12, Rx22, ... and Rx82 and the second resistance reducing wires RxW4, RxW5 and RxW6. The first and second resistance reducing wires RxW1 to RxW3 and RxW4 to RxW6 are connected to the power supply unit 15 and the touch recognition processor 17 via the first routing wires RL1 and RL2, respectively.

[0106] In another embodiment shown in FIG. 15, three the first resistance reducing wires RxW1, RxW2 and RxW3 are used to constitute the first touch sensing line and three the second resistance reducing wires RxW4, RxW5 and RxW6 are used to constitute the second touch sensing line. However, this disclosure is not limited thereto. For example, one or two resistance reducing wires may be used to constitute each of the first and second touch sensing lines. Otherwise four and more resistance reducing wires may be used to constitute each of the first and second touch sensing lines.

[0107] On the other hand, touch driving electrodes Tx1 to Tx8 constituting the touch sensor according to another embodiment of this disclosure are arranged in the first direction (for example, x axis direction) to cross over the first and second resistance reducing wires RxW1 to RxW3 and RxW4 to RxW6 between the first and second touch sensing electrodes Rx11, Rx12 and Rx21, Rx22; Rx21, Rx22 and Rx31, Rx32; Rx31, Rx32 and Rx41, Rx42; Rx41, Rx42 and Rx51, Rx52; Rx51, Rx52 and Rx61, Rx62; Rx61, Rx62 and Rx71, Rx72; and Rx71, Rx72 and Rx81, Rx82. Another resistance reducing wires TxW1 to TxW8 are formed on the touch driving electrodes Tx1 to Tx8, respectively. Also, the touch driving electrodes Tx1 to Tx8 are separated from each other, but they may be grouped by the resistance reducing wires TxW1 to TxW8. For example, the first to fourth touch driving electrodes Tx1 to Tx4 are grouped by the third to sixth resistance reducing wires TxW1 to TxW4, and the fifth to eighth touch driving electrodes Tx5 to Tx8 are grouped by the seventh to tenth resistance reducing wires TxW5 to TxW8. Accordingly, the first to eighth touch driving electrodes Tx1 to Tx8 are grouped by the third to tenth resistance reducing wires TxW1 to TxW8 to form two touch driving lines including a first touch driving line Tx1 to Tx4 and TxW1 to TxW4, and a second touch driv-

ing line Tx5 to Tx8 and TxW5 and TxW8. The first driving line Tx1 to Tx4 and TxW1 to TxW4 is connected to the power supply unit 15 via the second routing wire TL1, and the second driving line Tx5 to Tx8 and TxW5 to TxW8 are connected to the power supply unit 15 via the second routing wire TL2.

[0108] The touch sensor according to another embodiment of this disclosure includes the touch sensing electrodes Rx 11, Rx21, ..., and Rx81; and Rx 12, Rx22, ... and Rx82, and the touch driving electrodes Tx1 to Tx8. And an unit of touch recognition block may be determined by appropriately grouping the touch sensing electrodes Rx11, Rx21, ..., and Rx81; and Rx12, Rx22, ... and Rx82 and the touch driving electrodes Tx1 to Tx8 using the first to tenth resistance reducing wires RxW1 to RxW6 and TxW1 to TxW8. In example shown in FIG. 15, four touch recognition block TU11, TU12, TU21 and TU22 are formed by sixteen touch sensing electrodes Rx11, Rx21, ..., and Rx81; and Rx12, Rx22, ... and Rx82, eight touch driving electrodes Tx1 to Tx8, and fourteen resistance reducing wires RxW1 to RxW6 and TxW1 to TxW8.

[0109] More specifically, a first touch recognition block TU11 is determined by the first touch sensing electrodes Rx11, Rx21, Rx31 and Rx41 connected to each other by the resistance reducing wires RxW1 to RxW3, and the first to fourth touch driving electrodes Tx1 to Tx4 connected to each other by the resistance reducing wires TxW1 to TxW4. A second touch recognition block TU12 is determined by the second touch sensing electrodes Rx12, Rx22, Rx32 and Rx42 connected to each other by the resistance reducing wires RxW4 to RxW6, and the first to fourth touch driving electrodes Tx1 to Tx4 connected to each other by the resistance reducing wires TxW1 to TxW4. A third touch recognition block TU21 is determined by the first touch sensing electrodes Rx51, Rx61, Rx71 and Rx81 connected to each other by the resistance reducing wires RxW1 to RxW3, and the fifth to eighth touch sensing electrodes Tx5 to Tx8 connected to each other by the resistance reducing wires TxW5 to TxW8. A fourth touch recognition block TU22 is determined by the second touch sensing electrodes Rx52, Rx62, Rx72 and Rx82 connected to each other by the resistance reducing wires RxW4 to RxW6, and the fifth to eighth touch driving electrodes Tx5 to Tx8 connected to each other by the resistance reducing wires TxW5 to TxW8.

[0110] The mentioned above touch sensing electrodes Rx11, Rx21, ...Rx81; and Rx12, Rx22, ... Rx82 serve as common electrodes COM, and formed on the first substrate SUB 1 along with the pixel electrodes Px in a horizontal electrical field driving type display device. And the pixel electrodes Px are formed in areas defined by the crossing of the gate lines G1 to Gm and the data lines D1 to Dn as shown in FIG. 2.

[0111] Each of the touch sensing Rx11, Rx21, ...Rx81; and Rx12, Rx22, ... Rx82 are formed be in opposite to several to several tens of the pixel electrodes Px, but may be formed be in opposite to one pixel electrode Px.

[0112] In the mentioned above touch sensor integrated type display device according to another embodiment of this disclosure, a touch driving voltage Vtsp is supplied to the first to eighth touch driving electrodes TX1 to TX8 via the power supply unit 15 during a touch operation. On the other hand, a common voltage Vcom is supplied to the first and second touch sensing electrodes Rx11, Rx21, ... Rx81; and Rx12, Rx22, ... Rx82 via the power supply unit 15 during a display operation, and touch sensing voltages received from the touch sensing electrodes Rx11, Rx21, ... Rx81; and Rx12, Rx22, ... Rx82 supply to the touch recognition processor 17 during the touch operation. Accordingly, the first and second touch sensing electrodes Rx11, Rx21, ... Rx81; and Rx12, Rx22, ... Rx82 serve as the common electrode of the display device during the display operation, and serve as the touch sensing electrodes of the touch sensor during the touch operation.

[0113] In the mentioned above touch sensor integrated type display device, one touch sensing electrode and one pixel electrode may be formed in one to one, otherwise one to n (wherein, n is two or more natural number). Also, each of the first and second resistance reducing wires RxW1 to RxW3 and RxW4 to RxW6 may be formed to be corresponding to one data line, otherwise several to several tens of the data line. Also, each of the touch driving electrodes Tx1 to Tx8 may be formed to be corresponding to one gate line, otherwise several to several tens of the gate lines. According to the construction, it is possible to improve touch sensitivity by increasing mutual capacitance between the touch driving electrodes and touch sensing electrodes because number of the touch driving electrodes and touch sensing electrodes are increased. Furthermore, it is possible to easily adjust number of the touch driving electrodes and touch sensing electrodes according to need because the touch driving electrodes and the touch sensing electrodes may be formed to be corresponding to the gate lines and data lines.

[0114] The touch sensor integrated type display device according to another embodiment of this disclosure will be described in detail with reference to FIGs. 16A and 16B.

[0115] Referring to FIGs. 16A and 16B, the touch sensor integrated type display device according to another embodiment of this disclosure includes gate lines GL and data lines DL formed on substrate SUB1 of a thin film transistor array TFTA to cross over to each other, thin film transistors TFTs respectively formed at crossings of the gate lines GL and the data lines DL, pixel electrodes Px formed in areas which are defined by crossings of the gate lines GL and the data lines DL, and common electrodes COM positioned to be opposite to the pixel electrodes Px. The common electrode COM serves as a touch driving electrode Tx. Accordingly, it is referred to as a common electrode COM, a touch driving electrode Tx, or a a common electrode COM which serves as a touch driving electrode Tx according to need.

[0116] In the construction, the thin film transistors TFTs may include a gate electrode G extended from the gate line GL, an active layer A formed on a gate insulation layer GI covering the gate line GL and the gate electrode G so as to overlap with the gate electrode G, a source electrode S extended from the data line D1 which is formed on a first passivation layer PAS1 covering the active layer A, and a drain electrode opposite to the source electrode S.

[0117] Pixel electrodes Px are formed on a first passivation layer PAS1 in pixel areas defined by crossings of the gate lines GL and the data lines DL. Also, a touch driving electrode Tx is formed between the pixel electrodes which are neighboring to each other with the gate line GL therebetween, and formed in parallel with the gate line GL. The touch driving electrode Tx may be formed to be overlapped with the gate line GL. Each of the pixel electrode Px is connected to the drain electrode D exposed via the contact hole CH of the first passivation layer PAS 1.

[0118] First and second resistance reducing wires (hereinafter referred to as "driving electrode resistance reducing wire") TxW (TxW1 to TxW4 and TxW5 to TxW8 of FIG. 15) are formed on the touch driving electrodes Tx (Tx1 to Tx8 of FIG. 15), respectively, and arranged in parallel with the gate line GL to reduce the resistance of the touch driving electrodes Tx (Tx1 to Tx8 of FIG. 15).

[0119] A second passivation layer PAS2 is formed on the first passivation layer PAS 1 on which the driving electrode resistance reducing wires TxW and the touch driving electrodes Tx are formed. Third and fourth resistance reducing wires (hereinafter referred to as "sensing electrode resistance reducing wire") RxW (RxW1 to RxW3 and RxW4 to RxW6 of FIG. 15) are formed in parallel with the data line GL (that is, in x axis direction) on the second passivation PAS2. The sensing electrode resistance reducing wires RxW and the data lines DL may be formed in one to one, otherwise one to several or one to several tens.

[0120] Touch sensing electrodes Rx (Rx11, Rx21, Rx31, ... Rx81; and Rx12, Rx 22, Rx32, ... Rx82 of FIG. 15) which serve as the common electrodes COM are formed on the second passivation layer PAS2 on which the sensing electrode resistance wires RxW are formed. The touch sensing electrodes Rx are arranged in parallel with the gate line GL to be overlapped with the pixel electrodes Px and connected to the sensing electrode resistance reducing wires RxW. Each of the touch sensing electrodes Rx and the pixel electrodes Px may be formed in one to one, otherwise one to several or one to several tens. Each of the touch sensing electrodes Rx may have a plurality of slits or openings SL.

[0121] In the touch sensor integrated type display device according to another embodiment of this disclosure, the pixels electrodes Px formed on the first passivation layer PAS 1 has no slit or openings, and the touch sensing electrode Rx has slits or openings SL as shown in FIGs. 16A and 16B. However this disclosure is no limited there-

to. For example, if the one of the touch sensing electrode Rx and the pixel electrode Px has slits or openings, the other of them has no slits or openings.

[0122] In the touch sensor integrated type display device according to another embodiment of this disclosure, there is described that the common electrode COM serves as the touch sensing electrode Rx. However the common electrode COM may serve as the touch driving electrode Tx if the common voltage Vcom is supplied to the touch common electrode Tx from the power supply unit 15 in a display driving operation, a touch driving voltage Vtsp is supply to the common electrode COM from the power supply unit 15 in a touch driving operation.

[0123] Again, referring to FIGs. 14 and 15, the gate driver 13 sequentially outputs a gate pulse (or a scan pulse) under the control of the timing controller 11 during a display driving operation. The gate driver 13 shifts a swing voltage of the gate pulse to a gate high voltage VGH and a gate low voltage VGL. The gate pulse output from the gate driver 13 is synchronized with the data voltage output from the data driver 12 and is sequentially supplied to the gate lines G1 to Gm. The gate high voltage VGH is equal to or greater than a threshold voltage of the thin film transistor TFT, and the gate low voltage VGL is less than the threshold voltage of the thin film transistor TFT. A plurality of gate driving integrated circuits (ICs) of the gate driver 13 may be connected to the gate lines G1 to Gm formed on the first substrate SUBS1 of the TFT array TFTA through a tape automated bonding (TAB) process. Alternatively, the gate driving ICs of the gate driver 13 may be directly formed on the first substrate SUBS1 of the TFT array TFTA along with pixels through a gate-in-panel (GIP) process.

[0124] The data driver 12 samples and latches digital video data RGB under the control of the timing controller 11. The data driver 12 converts the digital video data RGB into positive and negative gamma compensation voltages GMA1 to GMA_n and inverts a polarity of the data voltage. The positive and negative data voltages output from the data driver 12 are synchronized with the gate pulses output from the gate driver 13. A plurality of source driving ICs of the data driver 12 may be connected to the data lines D1 to D_n formed on the first substrate SUBS1 of the TFT array TFTA through a chip-on glass (COG) process or the TAB process. The source driving ICs may be integrated inside the timing controller 11 and thus may be implemented as a single chip IC along with the timing controller 11.

[0125] The timing controller 11 generates timing control signals for controlling operation timings of the gate driver 13 and the data driver 12 using timing signals Vsync, Hsync, DE, and MCLK, which are received from the external host controller 10 and are used to drive the touch sensor integrated type liquid crystal display. The timing control signals include a gate timing control signal for controlling the operation timing of the gate driver 13 and a data timing control signal for controlling the operation timing of the data driver 12 and the polarity of the

data voltage.

[0126] The gate timing control signal includes a gate start pulse GSP, a gate shift clock GSC, a gate output enable GOE, and the like. The gate start pulse GSP is applied to a first gate driving IC of the gate driver 13 to output a first gate pulse in each frame period and controls a shift start timing of the first gate driving IC. The gate shift clock GSC is commonly input to the gate driving ICs of the gate driver 13 and also shifts the gate start pulse GSP. The gate output enable GOE controls output timings of the gate driving ICs of the gate driver 13.

[0127] The data timing control signal includes a source start pulse SSP, a source sampling clock SSC, a polarity control signal POL, a source output enable SOE, and the like. The source start pulse SSP is applied to a first source driving IC of the data driver 12 to firstly sample the data and controls a data sampling start timing. The source sampling clock SSC controls a sampling timing of data inside the source driving ICs based on a rising or falling edge thereof. The polarity control signal POL controls the polarity of the data voltage output from the source driving ICs. The source output enable SOE controls output timings of the source driving ICs. If the digital video data RGB is input to the data driver 102 through a mini low voltage differential signaling (LVDS) interface, the source start pulse SSP and the source sampling clock SSC may be omitted.

[0128] The power supply unit 15 is implemented as a DC-DC converter including a pulse width modulation (PWM) circuit, a boost converter, a regulator, a charge pump, a voltage divider, an operational amplifier, etc. The power supply unit 15 regulates a voltage input from the host controller 10 and generates voltages required to drive the liquid crystal display panel LCP, the data driver 12, the gate driver 13, the timing controller 11, and the backlight unit (not shown).

[0129] The voltages generated by the power supply unit 15 include a high potential power voltage VDD, the gate high voltage VGH, the gate low voltage VGL, a common voltage Vcom, positive and negative gamma reference voltages GMA1 to GMA_n, a touch driving voltage Vtsp, and the like. The common voltage Vcom is supplied to the common electrodes COM under the control of the host controller 10 during a display driving operation. Alternatively, the common voltage Vcom may be supplied to the common electrode COM under the control of the timing controller 11 during a display driving operation. The touch driving voltage Vtsp is supplied to the touch driving electrodes Tx1 to Tx8 under the control of the host controller 10 during a touch driving operation. Alternatively, the touch driving voltage Vtsp may be supplied to the touch driving electrodes Tx1 to Tx8 under the control of the timing controller 11 during a touch driving operation.

[0130] In the embodiment shown in FIG. 14, the touch driving voltage Vtsp is supplied to the touch driving electrodes Tx1 to Tx8 through the power supply unit 15, but this disclosure is not limited thereto. For example, the

touch driving voltage Vtsp is supply to the touch driving electrodes Tx1 to Tx8 through the touch recognition processor 17 under the control of the host controller 10 or the timing controller 11.

[0131] The host controller 10 transfers the digital video data RGB of an input image and the timing signals Vsync, Hsync, DE, and MCLK driving the touch sensor integrated type liquid crystal display to the timing controller 11 through an interface, such as the LVDS interface and a transition minimized differential signaling (TMDS) interface. When the touch sensor integrated type liquid crystal display is driven so as to display the image on its screen, the host controller 10 supplies control signal Vin for controlling the power supply unit 15, so that the common voltage Vcom can be supplied to the common electrode COM. When the touch sensor integrated type liquid crystal display is driven for the touch recognition, the host controller 10 supplies a control signal Vin for controlling the power supply unit 15, so that the touch driving voltage Vtsp can be supplied to the touch driving electrodes Tx1 to Tx8.

[0132] The touch recognition processor 17 differentially amplifies a difference voltage between a voltage of an initial capacitance of each the touch sensing electrodes Rx11, Rx21, ...Rx81; and Rx12, Rx22, ...Rx82 measured through the second routing wires RL1 and RL2 connected thereto before a touch operation and a voltage of a touch capacitance of each the touch sensing electrodes Rx11, Rx21, ...Rx81; and Rx12, Rx22, ...Rx82 measured through the second routing wires RL1 and RL2 after the touch operation. The touch recognition processor 17 then converts the result of a differential amplification into digital data. The touch recognition processor 17 decides a touch position based on a difference between the initial capacitance and the touch capacitance using a touch recognition algorithm and outputs touch coordinate data indicating the touch position to the host controller 10.

[0133] As mentioned above, the first and second touch driving electrodes Rx11, Rx21, ...Rx81; and Rx12, Rx22, ...Rx82 according to another embodiment of this disclosure constitute touch sensing in y axis direction, and the touch driving electrodes Tx1 to Tx8 constitute touch driving lines in x axis direction so that they cross over each other. Accordingly, if a touch is performed on a particular position of the display device, there is a variation of mutual capacitance between the touch driving lines and the touch sensing lines. It is possible to detect the touch position by measuring the variation of mutual capacitance is generated.

[0134] In particular, it is possible to improve touch sensitivity by increasing mutual capacitance between the touch driving electrodes and touch sensing electrodes because number of the touch driving electrodes and touch sensing electrodes are increased by forming the touch driving electrode to be corresponding to the pixel electrode and forming the touch sensing electrode to be corresponding to the gate line. Furthermore, it is advantageous in that it is possible to easily manufacture a touch

sensor integrated type display device having touch recognition blocks because a size of the touch recognition block is easily adjustable by using the touch driving electrode resistance reducing wires and the touch sensing electrode resistance reducing wires.

[0135] Hereinafter, a method of manufacturing the touch sensor integrated type display device according to another embodiment of this disclosure will be described with reference to FIGs. 17A to 24B.

[0136] FIG. 17A is a top planar view illustrating a first mask process for manufacturing the touch sensor integrated type display device according to another embodiment of this disclosure, and FIG. 17B is a cross-sectional view taken along lines I-I' and II-II' shown in FIG. 17A.

[0137] Referring to FIGs. 17A and 17B, a first metal layer (gate metal layer) is entirely deposited on a first substrate SUB through a deposition process as a first conductive layer. A gate line GL and a gate electrode G extended from the gate line GL are formed on the substrate SUB1 using the first mask process.

[0138] More specifically, a gate metal layer is formed on the entire surface of the substrate SUB 1 as a first conductive layer by a deposition process such as a sputtering process. After a photo resist is entirely applied to the substrate SUB 1 on which the first conductive layer is deposited, a first photo resist pattern (not shown) exposing a portion of the gate metal layer is formed through a photolithography process using a first mask. The first gate metal layer exposed via the first photo resist pattern is removed by a wet etching. The first photo resist pattern is then removed by an ashing process, thereby forming the gate line GL and the gate electrode G on the substrate SUB 1. The gate metal layer may be selected from a metal material such as Al, AlNd, Cu, Cr, Mo, or MoTi.

[0139] FIG. 18A is a top planar view illustrating a second mask process for manufacturing the touch sensor integrated type display device according to another embodiment of this disclosure, and FIG. 18B is a cross-sectional view taken along lines I-I' and II-II' shown in FIG. 18A.

[0140] Referring to FIGs. 18A and 18B, a gate insulation layer GI is formed on an entire surface of the substrate SUB1 on which the gate line GL and the gate electrode G are formed. A semiconductor layer is then entirely formed on the gate insulation layer GI. A photo resist layer is entirely formed on the semiconductor layer, and a second photo resist pattern (not shown) is formed to expose regions of the semiconductor layer excluding a channel region through a photolithography process using a second mask. The semiconductor layer exposed via the second photo resist pattern is removed by an etching process. The second photo resist pattern is then removed by an ashing process, thereby forming the semiconductor pattern A.

[0141] FIG. 19A is a top planar view illustrating a third mask process for manufacturing the touch sensor integrated type display device according to another embodiment of this disclosure, and FIG. 19B is a cross-sectional

view taken along lines I-I' and II-II' shown in FIG. 19A.

[0142] Referring to FIGs. 19A and 19B, a second metal layer (data metal layer) is formed as a second conductive layer on the gate insulation layer GI on which the semiconductor pattern A is formed. And then a first conductive pattern group including a data line DL, a source electrode S extended from the data line DL, and a drain electrode D opposite to the source electrode S are formed by patterning the data metal layer through a photolithography process.

[0143] More specifically, a data metal layer is formed as a second conductive layer on the gate insulation layer GI on which the semiconductor pattern A is formed. A photo resist is entirely deposited on the data metal layer, and a third photo resist pattern (not shown) is formed through a photolithography process using a third mask. The third photo resist pattern exposes regions of the data metal layer excluding regions on which a data line, a source electrode and a drain electrode are to be formed. The data line DL and a thin film transistor TFT including the source electrode S extended from the data line DL and a drain electrode D are formed by etching the data metal layer exposed via the third photo resist pattern and removing the third photo resist pattern remained on the data metal layer. The data line DL crosses over the gate line GL with the gate insulation layer GI therebetween. The source electrode S is extended from the data line DL and the drain electrode D is opposite to the source electrode S.

[0144] FIG. 20A is a top planar view illustrating a fourth mask process for manufacturing the touch sensor integrated type display device according to another embodiment of this disclosure, and FIG. 20B is a cross-sectional view taken along lines I-I' and II-II' shown in FIG. 20A.

[0145] Referring to FIGs. 20A and 20B, a first passivation layer PAS1 is entirely formed on the gate insulation layer GI on which the first conductive pattern group is formed. And then a contact hole CH is formed to expose a portion of the drain electrode D by etching the first passivation layer PAS1 using a fourth mask process.

[0146] More specifically, a first passivation layer PAS1 is entirely formed on the gate insulation layer GI on which the data line DL and the thin film transistor TFT are formed. A photo resist layer is entirely formed on the first passivation layer PAS1, and a fourth photo resist pattern (not shown) is formed to expose a portion of the drain electrode D through a photolithography process using a fourth mask. A contact hole CH exposing the portion of the drain electrode D is then formed in the first passivation layer PAS 1 by etching the first passivation layer PAS1 exposed via the fourth photo resist pattern and removing the fourth photo resist pattern. The first passivation layer PAS 1 may be made of a low dielectric organic material such as polyanionic cellulose (PAC).

[0147] FIG. 21A is a top planar view illustrating a fifth mask process for manufacturing the touch sensor integrated type display device according to one embodiment of this disclosure, and FIG. 21B is a cross-sectional view

taken along lines I-I' and II-II' shown in FIG. 21A.

[0148] Referring to FIGs. 21A and 22B, a first transparent conductive layer is entirely formed as a third conductive layer on the first passivation layer PAS1 in which the contact hole CH is formed. And then pixel electrodes Px and touch driving electrodes Tx are formed by patterning the first transparent conductive layer using a fifth mask process.

[0149] More specifically, a first transparent conductive layer is entirely formed as a third conductive layer on the first passivation layer PAS 1 in which the contact hole CH is formed through a deposition process such as a plasma-enhanced chemical vapor deposition (PECVD). A photo resist layer is entirely formed on the first transparent conductive layer, and a fifth photo resist pattern (not shown) is formed through a photolithography process using a fifth mask. The fifth photo resist pattern exposes regions of the first transparent conductive layer excluding regions on which pixel electrodes and touch driving electrodes are to be formed. The pixel electrodes Px and touch driving electrodes Tx are formed by etching the first transparent conductive layer exposed via the fifth photo resist pattern and removing the fifth photo resist pattern remaining on the first transparent conductive layer. The pixel electrodes Px are formed in pixel areas defined by crossings of the gate lines GL and the data lines DL, respectively. Each of the touch driving electrodes Tx is formed in parallel with the gate line GL between the pixel electrodes PX which are neighbored to each other up and down in the drawings. And the touch driving electrodes Tx and the gate lines GL are formed in one to one, otherwise one to several or one to several tens as described in relation to FIGs 14 and 15. The first conductive layer may be made of a transparent conductive material such as indium tin oxide (ITO), indium zinc oxide (IZO), or gallium-doped zinc oxide (GZO).

[0150] FIG. 22A is a top planar view illustrating a sixth mask process for manufacturing the touch sensor integrated type display device according to another embodiment of this disclosure, and FIG. 22B is a cross-sectional view taken along lines I-I' and II-II' shown in FIG. 22A.

[0151] Referring to FIGs. 22A and 22B, a third metal layer is entirely formed as fourth conductive layer on the first passivation layer PAS 1 on which the touch driving electrodes Tx and the pixel electrodes Px are formed through a deposition process such as a sputtering. And then touch driving electrode resistance reducing wires TxW are formed on the touch driving electrodes Tx in parallel with the data line DL using a sixth mask process.

[0152] More specifically, through a deposition process such as a sputtering, a third metal layer is entirely formed as fourth conductive layer on the first passivation layer PAS1 on which the touch driving electrodes Tx and the pixel electrodes Px are formed. A photo resist is entirely deposited on the fourth conductive layer, and then a sixth photo resist pattern (not shown) is formed to expose portions excluding areas on which the touch driving electrodes Tx are formed through a photolithograph process

using a sixth mask. Thereafter, the touch driving electrode resistance reducing wires TxW by etching the fourth conductive layer exposed via the sixth photo resist pattern and removing the sixth photo resist pattern remained on the fourth conductive layer. The touch driving electrode resistance reducing wires TxW are in parallel with the gate line GL and contacted with the touch driving electrodes Tx. The fourth conductive layer may be selected from a metal material such as Al, AlNd, Cu, Cr, Mo, or MoTi.

[0153] In the above description, the touch driving electrode Tx, the pixel electrodes Px and the touch driving electrode resistance reducing wires TxW are respectively formed by two mask processes. However they may be formed through a photolithography process using a halftone mask. That is, provided that the process using the halftone mask is used, the touch driving electrodes Tx, the pixel electrodes Px and the touch driving electrode resistance reducing wires TxW may be formed with one mask process. The description about the process using the halftone mask is omitted because it is known as the related art.

[0154] FIG. 23A is a top planar view illustrating a seventh mask process for manufacturing the touch sensor integrated type display device according to another embodiment of this disclosure, and FIG. 23B is a cross-sectional view taken along lines I-I' and 11-11' shown in FIG. 23A.

[0155] Referring to FIGs. 23A and 23B, a second passivation layer PAS2 and a fourth metal layer are sequentially are formed on the first passivation layer PAS 1 on which the touch driving electrodes Tx, the pixel electrodes Px and the touch driving electrode resistance reducing wires TxW are formed. And then touch sensing electrode resistance reducing wires RxW are formed on the second passivation layer to be in parallel with the data line DL by patterning the fifth conductive layer using a seventh mask process.

[0156] More specifically, a second passivation layer PAS2 is entirely formed on the first passivation layer PAS1 on which the touch driving electrodes Tx, the pixel electrodes Px and the touch driving electrode resistance reducing wires TxW are formed are formed, and then a fourth metal layer is deposited on the second passivation layer PAS2 as a fifth conductive layer through a deposition process such as a plasma-enhanced chemical vapor deposition (PECVD). A photo resist is entirely formed on the fifth conductive layer PAS2, and then a seventh photo resist pattern (not shown) is formed to expose area excluding areas where sensing electrode resistance reducing wires are to be formed. The sensing electrode resistance reducing wires RxW are formed by etching the fifth conductive layer exposed via the seventh photo resist pattern and removing the photo resist pattern remained on the fifth conductive layer. The second passivation layer PAS2 may be made of a low dielectric organic material such as polyanionic cellulose (PAC), and the fifth conductive layer may be selected from a metal material such

as Al, AlNd, Cu, Cr, Mo or MoTi.

[0157] FIG. 24A is a top planar view illustrating a eighth mask process for manufacturing the touch sensor integrated type display device according to another embodiment of this disclosure, and FIG. 24B is a cross-sectional view taken along lines I-I' and II-II' shown in FIG. 24A.

[0158] Referring to FIGs. 24A and 24B, a second transparent conductive layer as sixth conductive layer is deposited on the second passivation layer PAS2 on which the sensing electrode resistance reducing wires RxW are formed. And then touch sensing electrodes Rx which serve as common electrodes COM are formed by etching the sixth conductive layer through an eighth mask process.

[0159] More specifically, second transparent conductive layer as sixth conductive layer is deposited on the second passivation layer PAS2 on which the sensing electrode resistance reducing wires RxW are formed. A photo resist is entirely formed on the sixth conductive layer, and an eighth photo resist pattern (not shown) is formed to expose portions excluding areas where sensing electrode resistance reducing wire RxW are to be formed through a photolithography process using an eighth mask. The sixth conductive layer exposed via the eighth photo resist pattern is etched, and then sensing electrode resistance reducing wires RxW are formed by removing the eighth photo resist pattern. The sixth conductive layer may be selected from a transparent conductive material such as ITO, IZO, or GZO.

[0160] In the description for the seventh and eighth mask processes, the sensing electrode resistance reducing wire RxW and the touch sensing electrodes Rx are formed by respective mask process. However the sensing electrode resistance reducing wire RxW and the touch sensing electrodes Rx may be formed through a photolithography process using a halftone mask. Provided that the process using the halftone mask is used, the sensing electrode resistance reducing wire RxW, the sensing electrode resistance reducing wire RxW and the touch sensing electrodes Rx may be formed with one mask process. The description about the process using the halftone mask is omitted because it is known as the related art.

[0161] According to the above-mentioned touch sensor integrated type display devices and methods of manufacturing the same, it may be unnecessary to independently form the touch sensing electrodes (or touch driving electrodes) for touch driving operation because the common electrode for driving the display device can serve as touch sensing electrodes (or touch driving electrodes). Accordingly, it is possible to remove the process for forming the independent touch sensing electrodes (or touch driving electrodes), thereby lessening a thickness of the display device by as much as the thickness of the touch sensing electrode.

[0162] Furthermore, one touch sensing electrode (or one touch driving electrode) and one pixel electrode may be formed in one to one, otherwise one to n (wherein, n

is two or more natural number). Also, the touch sensing and driving electrodes may be easily grouped using the sensing and driving electrode resistance reducing wires. Accordingly, it is possible to easily adjust a size of touch recognition block according to need, and improve touch sensitivity by increasing mutual capacitance between the touch driving electrodes and touch sensing electrodes because number of the touch driving electrodes and touch sensing electrodes are increased.

[0163] While this disclosure has been described with respect to a limited number of embodiments, those skilled in the art, having benefit of the above description, will appreciate that other embodiments can be devised which do not depart from the scope of this disclosure as disclosed herein. For example, in embodiments according to this disclosure, it is described that the touch driving electrode includes a driving electrode resistance reducing wire and the touch sensing electrode includes a sensing electrode resistance reducing wire. However, the touch driving and sensing electrodes need the resistance reducing wires in case that they are made of transparent conductive material such as ITO, IZO or GZO. On the other hand the touch driving and sensing electrodes do not need the resistance reducing wires in this case the touch driving and sensing electrodes are connected to the routing wires. Accordingly, the scope of this disclosure should be limited only by the attached claims.

Claims

1. A touch sensor integrated type display device comprising:

- a plurality of gate lines (GL);
- a plurality of data lines (DL) crossing over the plurality of the gate lines (GL);
- a plurality of pixel electrodes (Px) formed in areas defined by crossing of the gate lines (GL) and the data lines (DL);
- a plurality of first electrodes (Rx1~Rx8; Tx1~Tx8) formed between pixel electrodes (Px) which are neighbored to each other with a gate line (GL) therebetween, the plurality of first electrodes (Rx1~Rx8; Tx1~Tx8) serving as one of touch driving electrodes and touch sensing electrodes;
- a plurality of second electrodes (Tx11, Tx21, Tx31, Tx41, ...Tx81; Rx11, Rx21, Rx31, Rx41, ...Rx81) being formed to overlap with at least one portion of the pixel electrode (Px) and to extend continuously in the direction of the gate lines (GL) across adjacent pixel electrodes of the pixel electrodes (Px) arranged in the direction of the gate lines (GL) and arranged adjacent to one another in the direction of the data lines (DL), wherein each two adjacent second electrodes of the plurality of second electrodes

- (Tx11, Tx21, Tx31, Tx41, ...Tx81; Rx11, Rx21, Rx31, Rx41, ...Rx81) are connected to each other in the direction of the data lines (DL) by at least one connection portion formed in the same layer as the second electrodes and extending continuously from the adjacent second electrodes such that the plurality of second electrodes (Tx11, Tx21, Tx31, Tx41, ...Tx81; Rx11, Rx21, Rx31, Rx41, ...Rx81) together with the connection portions form groups of second electrodes the plurality of second electrodes (Tx11, Tx21, Tx31, Tx41, ..., Tx81; Rx11, Rx21, Rx31, Rx41, ...Rx81) serving as touch sensing electrodes (COM) if the plurality of first electrodes (Rx1~Rx8; Tx1~Tx8) serve as the touch driving electrodes, and serving as touch driving electrodes if the plurality of first electrodes (Rx1~Rx8; Tx1~Tx8) serve as the touch sensing electrodes, wherein groups of second electrodes (Tx11, Tx21, Tx31, Tx41, ...Tx81; Rx11, Rx21, Rx31, Rx41, ...Rx81) serve as a common electrode (COM) for driving the display device, wherein the plurality of first electrodes (Rx1~Rx8; Tx1~Tx8) and the connection portions, are arranged to cross each other, and wherein the touch sensor integrated type display device is configured to detect a touch position by measuring a variation of mutual capacitance between the touch driving electrodes (Tx) and the touch sensing electrodes (Rx).
2. The touch sensor integrated type display device of claim 1, wherein the plurality of first electrodes (Rx1~Rx8) are touch sensing electrodes (Rx), and the plurality of second electrodes (Tx11, Tx21, Tx31, Tx41, ...Tx81) are touch driving electrodes (Tx).
 3. The touch sensor integrated type display device of claim 1, wherein the plurality of first electrodes (Tx1~Tx8) are touch driving electrodes (Tx), and the plurality of second electrodes (Rx11, Rx21, Rx31, Rx41, ...Rx81) are touch sensing electrodes (Rx).
 4. The touch sensor integrated type display device of claim 1, further comprising at least one first electrode resistance reducing wire formed on the each of the first electrodes, thereby reducing resistance of the first electrodes.
 5. The touch sensor integrated type display device of claim 1, further comprising:
 - a gate insulation layer (GI) between the gate lines (GL) and the data lines (DL) to cover the gate lines (GL);
 - a plurality of thin film transistors (TFT) formed in pixel areas defined by crossings of the gate
- lines (GL) and the data lines (DL);
 a first passivation layer (PAS1) covering the gate insulation layer (GI) on which the thin film transistors (TFT) are formed; and
 a second passivation layer (PAS2) covering the second electrodes which are formed on the first passivation layer (PAS1) to be in parallel with the gate lines (GL) and formed in at least two pixel area neighbored to each other with a gate line (GL) therebetween,
 the plurality of pixel electrodes (Px) are formed on the second passivation layer (PAS2) in the pixel areas, respectively, each of the pixel electrodes (Px) being overlapped with the at least one portion of the second electrode, wherein the first electrodes (Rx1~Rx8) are formed on the second passivation layer (PAS2) between the pixel electrodes (Px) which are neighbored to each other with the gate line (GL) therebetween, and formed in parallel with the gate line (GL).
6. The touch sensor integrated type display device of claim 5, wherein the plurality of first electrodes (Rx1~Rx8) are touch sensing electrodes (Rx), and the plurality of second electrodes (Tx11, Tx21, Tx31, Tx41, ...Tx81) are touch driving electrodes (Tx).
 7. The touch sensor integrated type display device of claim 5, further comprising at least one second electrode resistance reducing wire formed on the each of the second electrodes, thereby reducing resistance of the second electrodes.
 8. The touch sensor integrated type display device of claim 1, further comprising:
 - a gate insulation layer (GI) between the gate lines (GL) and the data lines (DL) to cover the gate lines (GL);
 - a plurality of thin film transistors (TFT) formed in pixel areas defined by crossings of the gate lines (GL) and the data lines (DL), respectively; and
 - a first passivation layer (PAS1) covering the gate insulation layer (GI) on which the thin film transistors (TFT) are formed; and
 - a second passivation layer (PAS2) covering the plurality of first electrodes which are formed on the first passivation layer (PAS1) to be in parallel with the gate lines (GL) between the pixel electrodes (Px) neighbored to each other with a gate line (GL) therebetween,
 - wherein the plurality of pixel electrodes (Px) are formed on the first passivation layer (PAS1) in the pixel areas, respectively, and
 - wherein the plurality of second electrodes are formed on the second passivation layer (PAS2)

in at least two pixel areas with a gate line (GL) therebetween, a portion of each second electrode being overlapped with the pixel electrode (Px) to be in parallel with the data line (DL).

9. The touch sensor integrated type display device of claim 8, wherein the plurality of first electrodes (Tx1~Tx8) are touch driving electrodes (Tx), and the plurality of second electrodes (Rx11, Rx21, Rx31, Rx41, ...Rx81) are touch sensing electrodes (Rx). 5
10. The touch sensor integrated type display device of claim 8, further comprising at least one first electrode resistance reducing wire formed on the each of the first electrodes, thereby reducing resistance of the first electrodes. 10
11. A method of manufacturing a touch sensor integrated type display device comprising: 15
 - depositing a first conductive layer on a substrate (SUB1), and then forming a plurality of gate lines (GL) and gate electrodes (G) using a first mask process; 20
 - sequentially forming a gate insulating layer (GI) and a semiconductor layer on the substrate on which the gate lines (GL) and gate electrodes (G) are formed, and then forming semiconductor patterns (A) opposite to the gate electrodes (G) by patterning the semiconductor layer using a second mask process; 25
 - depositing a second conductive layer on the gate insulation layer (GI) on which the semiconductor patterns (A) are formed, and then forming a first conductive pattern group including a plurality of data lines (DL) in parallel with each other, source electrodes (S) extended from the data lines (DL), and drain electrodes (D) opposite to the source electrodes (S) by patterning the second conductive layer using a third mask process; 30
 - sequentially forming a first passivation layer (PAS1) and a third conductive layer on the gate insulation layer (GI) on which the first conductive pattern group are formed, and then forming a plurality of second electrodes (Rx1~Rx8; Tx1~Tx8) and connection portions by patterning the third conductive layer using a fourth mask process; 35
 - depositing a fourth conductive layer on the first passivation layer (PAS1) on which the second electrodes and the connection portions are formed, and then forming at least one second electrode resistance reducing wire connected to each of the second electrodes by patterning the fourth conductive layer using a fifth mask process; 40
 - forming a second passivation layer (PAS2) on the first passivation layer (PAS1) on which the 45

second electrodes and the second electrode resistance reducing wires are formed, and then forming a contact hole (CH) exposing a portion of each the drain electrodes (D) by patterning the first and second passivation layers (PAS1, PAS2) using a sixth mask process; depositing a fifth conductive layer on the second passivation layer (PAS2) with the contact hole (CH), and then forming first electrode resistance reducing wires in parallel with the gate line (GL) by patterning the fifth conductive layer using a seventh mask process; and depositing a sixth conductive layer on the second passivation layer (PAS2) on which the first electrode resistance reducing wires are formed, and then forming a plurality of pixel electrodes (Px) and a plurality of first electrodes (Tx11, Tx21, Tx31, Tx41, ...Tx81; Rx11, Rx21, Rx31, Rx41, ...Rx81) by patterning the sixth conductive layer using the eighth mask process, wherein the plurality of first electrodes (Rx1~Rx8; Tx1~Tx8) serving as one of touch driving electrodes and touch sensing electrodes, wherein the plurality of second electrodes (Tx11, Tx21, Tx31, Tx41, ...Tx81; Rx11, Rx21, Rx31, Rx41, ...Rx81) are formed to overlap with at least a portion of the pixel electrodes (Px) and to extend continuously in the direction of the gate lines (GL) across adjacent pixel electrodes of the pixel electrodes (Px) arranged in the direction of the gate lines (GL) and are arranged adjacent to one another in the direction of the data lines (DL), wherein each two adjacent second electrodes of the plurality of second electrodes (Tx11, Tx21, Tx31, Tx41, ...Tx81; Rx11, Rx21, Rx31, Rx41, ...Rx81) are connected to each other in the direction of the data lines (DL) by at least one connection portion extending continuously from the adjacent second electrodes such that the plurality of second electrodes (Tx11, Tx21, Tx31, Tx41, ...Tx81; Rx11, Rx21, Rx31, Rx41, ...Rx81) together with the connection portions form groups of second electrodes the plurality of second electrodes (Tx11, Tx21, Tx31, Tx41, ...Tx81; Rx11, Rx21, Rx31, Rx41, ...Rx81) serve as touch sensing electrodes (COM) if the plurality of first electrodes (Rx1~Rx8; Tx1~Tx8) serve as the touch driving electrodes, and serve as touch driving electrodes if the plurality of first electrodes (Rx1~Rx8; Tx1~Tx8) serve as the touch sensing electrodes, and wherein groups of second electrodes (Tx11, Tx21, Tx31, Tx41, ...Tx81; Rx11, Rx21, Rx31, Rx41, ...Rx81) serve as a common electrode (COM) for driving the display device, and wherein the plurality of first electrodes 50

(Rx1~Rx8; Tx1~Tx8) and the connection portions, are arranged to cross each other.

12. The method of claim 11, wherein the second electrodes (Rx1~Rx8; Tx1~Tx8) are formed in parallel with the data lines (DL), and formed in at least two pixel areas of pixel areas with the gate line (GL) therebetween, and defined by crossings of the gate lines (GL) and the data lines (DL) and have the gate line (GL) therebetween, the plurality of second electrode resistance reducing wires are overlapped with the plurality of second electrodes, respectively, thereby reducing resistance of the second electrodes, the plurality of pixel electrodes (Px) are formed in the pixel areas; the plurality of first electrodes are formed in parallel with each other on the second passivation layer (PAS2) between the pixel electrodes (Px) which are neighbored to each other with the gate line (GL) therebetween, and the at least one first electrode resistance reducing wire is formed on each of the plurality of first electrodes, thereby reducing resistance of the first electrodes.

Patentansprüche

1. Eine Touch-Sensor-Anzeigevorrichtung des integrierten Typs, aufweisend:
- eine Mehrzahl von Gate-Leitungen (GL);
 - eine Mehrzahl von Datenleitungen (DL), die die Mehrzahl von Gate-Leitungen (GL) überkreuzen;
 - eine Mehrzahl von Pixelelektroden (Px), die in Bereichen, die mittels Überkreuzens der Gate-Leitungen (GL) und der Datenleitungen (DL) definiert sind, gebildet sind;
 - eine Mehrzahl von ersten Elektroden (Rx1~Rx8; Tx1~Tx8), die zwischen Pixelelektroden (Px), die einander benachbart sind mit einer Gate-Leitung (GL) dazwischen, gebildet sind, wobei die Mehrzahl von ersten Elektroden (Rx1~Rx8; Tx1~Tx8) als eines von Touch-Ansteuerungselektroden und Touch-Sensorelektroden dienen;
 - eine Mehrzahl von zweiten Elektroden (Tx11, Tx21, Tx31, Tx41,... Tx81; Rx11, Rx21, Rx31, Rx41,... Rx81), die derart gebildet sind, dass sie mit mindestens einem Bereich der Pixelelektrode (Px) überlappen und sich kontinuierlich in der Richtung der Gate-Leitungen (GL) über zueinander benachbarte Pixelelektroden der Pixelelektroden (Px), die in der Richtung der Gate-Leitungen (GL) angeordnet sind, hinweg erstrecken, und die zueinander benachbart in der Richtung der Datenleitungen (DL) angeordnet

sind, wobei jeweils zwei zueinander benachbarte zweite Elektroden der Mehrzahl von zweiten Elektroden (Tx11, Tx21, Tx31, Tx41,... Tx81; Rx11, Rx21, Rx31, Rx41,... Rx81) in der Richtung der Datenleitungen (DL) mittels mindestens eines Verbindungsbereichs, der in derselben Schicht gebildet ist wie die zweiten Elektroden, miteinander verbunden sind, und der sich kontinuierlich von den zueinander benachbarten zweiten Elektroden derart erstreckt, dass die Mehrzahl von zweiten Elektroden (Tx11, Tx21, Tx31, Tx41,... Tx81; Rx11, Rx21, Rx31, Rx41,... Rx81) zusammen mit den Verbindungsbereichen Gruppen von zweiten Elektroden bildet, wobei die Mehrzahl von zweiten Elektroden (Tx11, Tx21, Tx31, Tx41,... Tx81; Rx11, Rx21, Rx31, Rx41,... Rx81) als Touch-Sensorelektroden (COM) dienen, wenn die Mehrzahl von ersten Elektroden (Rx1~Rx8; Tx1~Tx8) als die Touch-Ansteuerungselektroden dienen, und als Touch-Ansteuerungselektroden dienen, wenn die Mehrzahl von ersten Elektroden (Rx1~Rx8; Tx1~Tx8) als die Touch-Sensorelektroden dienen,

wobei Gruppen von zweiten Elektroden (Tx11, Tx21, Tx31, Tx41,... Tx81; Rx11, Rx21, Rx31, Rx41,... Rx81) als eine gemeinsame Elektrode (COM) zum Ansteuern der Anzeigevorrichtung dienen,

wobei die Mehrzahl von ersten Elektroden (Rx1~Rx8; Tx1~Tx8) und die Verbindungsbereiche derart angeordnet sind, dass sie einander überkreuzen, und

wobei die Touch-Sensor-Anzeigevorrichtung des integrierten Typs derart eingerichtet ist, dass sie eine Berührungs-Position mittels Messens einer Änderung einer gegenseitigen Kapazität zwischen den Touch-Ansteuerungselektroden (Tx) und den Touch-Sensorelektroden (Rx) ermittelt.

2. Die Touch-Sensor-Anzeigevorrichtung des integrierten Typs gemäß Anspruch 1, wobei die Mehrzahl von ersten Elektroden (Rx1~Rx8) Touch-Sensorelektroden (Rx) sind, und die Mehrzahl von zweiten Elektroden (Tx11, Tx21, Tx31, Tx41,... Tx81) Touch-Ansteuerungselektroden (Tx) sind.
3. Die Touch-Sensor-Anzeigevorrichtung des integrierten Typs gemäß Anspruch 1, wobei die Mehrzahl von ersten Elektroden (Tx1~Tx8) Touch-Ansteuerungselektroden (Tx) sind, und die Mehrzahl von zweiten Elektroden (Rx11, Rx21, Rx31, Rx41,... Rx81) Touch-Sensorelektroden (Rx) sind.
4. Die Touch-Sensor-Anzeigevorrichtung des integrierten Typs gemäß Anspruch 1, ferner aufweisend mindestens eine Erste-Elektrode-Widerstand-redu-

zierende Leitung, die auf jeder der ersten Elektroden gebildet ist, wodurch ein Widerstand der ersten Elektroden reduziert ist.

5. Die Touch-Sensor-Anzeigevorrichtung des integrierten Typs gemäß Anspruch 1, ferner aufweisend:
 - eine Gate-isolierende Schicht (GI) zwischen den Gate-Leitungen (GL) und den Datenleitungen (DL) zum Überdecken der Gate-Leitungen (GL);
 - eine Mehrzahl von Dünnschichttransistoren (TFT), die in den Pixelbereichen, die mittels Überkreuzungen der Gate-Leitungen (GL) und der Datenleitungen (DL) definiert sind, gebildet sind;
 - eine erste Passivierungs-Schicht (PAS1), die die Gate-isolierende Schicht (GI), auf der die Dünnschichttransistoren (TFT) gebildet sind, überdeckt; und
 - eine zweite Passivierungs-Schicht (PAS2), die die zweiten Elektroden, die auf der ersten Passivierungs-Schicht (PAS1) derart gebildet sind, dass sie parallel zu den Gate-Leitungen (GL) sind, und die in mindestens zwei einander benachbarten Pixelbereichen mit einer Gate-Leitung (GL) dazwischen gebildet sind, überdeckt, wobei die Mehrzahl von Pixelelektroden (Px) auf der zweiten Passivierungs-Schicht (PAS2) in den jeweiligen Pixelbereichen gebildet sind, wobei jede der Pixelelektroden (Px) mit mindestens einem Bereich der zweiten Elektrode überlappt, wobei die ersten Elektroden auf der zweiten Passivierungs-Schicht (PAS2) zwischen den Pixelelektroden (Px), die einander benachbart sind mit der Gate-Leitung (GL) dazwischen, gebildet sind und parallel zu der Gate-Leitung (GL) gebildet sind.
6. Die Touch-Sensor-Anzeigevorrichtung des integrierten Typs gemäß Anspruch 5, wobei die Mehrzahl von ersten Elektroden (Rx1~Rx8) Touch-Sensorelektroden (Rx) sind, und die Mehrzahl von zweiten Elektroden (Tx11, Tx21, Tx31, Tx41,... Tx81) Touch-Ansteuerungselektroden (Tx) sind.
7. Die Touch-Sensor-Anzeigevorrichtung des integrierten Typs gemäß Anspruch 5, ferner aufweisend mindestens eine Zweite-Elektrode-Widerstand-reduzierende Leitung, die auf jeder der zweiten Elektroden gebildet ist, wodurch ein Widerstand der zweiten Elektroden reduziert ist.
8. Die Touch-Sensor-Anzeigevorrichtung des integrierten Typs gemäß Anspruch 1, ferner aufweisend:
 - eine Gate-isolierende Schicht (GI) zwischen den Gate-Leitungen (GL) und den Datenleitun-

gen (DL) zum Überdecken der Gate-Leitungen (GL);

eine Mehrzahl von Dünnschichttransistoren (TFT), die in den Pixelbereichen, die jeweils durch Überkreuzungen der Gate-Leitungen (GL) und der Datenleitungen (DL) definiert sind, gebildet sind;

eine erste Passivierungs-Schicht (PAS1), die die Gate-isolierende Schicht (GI), auf der die Dünnschichttransistoren (TFT) gebildet sind, überdeckt; und

eine zweite Passivierungs-Schicht (PAS2), die die Mehrzahl von ersten Elektroden, die auf der ersten Passivierungs-Schicht (PAS1) derart gebildet sind, dass sie parallel zu den Gate-Leitungen (GL) zwischen den zueinander benachbarten Pixelelektroden (Px) sind mit einer Gate-Leitung (GL) dazwischen,

wobei die Mehrzahl von Pixelelektroden (Px) auf der ersten Passivierungs-Schicht (PAS1) in den jeweiligen Pixelbereichen gebildet sind, und

wobei die Mehrzahl von zweiten Elektroden auf der zweiten Passivierungs-Schicht (PAS2) in mindestens zwei Pixelbereichen mit einer Gate-Leitung (GL) dazwischen gebildet sind, wobei ein Bereich von jeder zweiten Elektrode derart mit der Pixelelektrode (Px) überlappt, dass er parallel zu der Datenleitung (DL) ist.

9. Die Touch-Sensor-Anzeigevorrichtung des integrierten Typs gemäß Anspruch 8, wobei die Mehrzahl von ersten Elektroden (Tx1~Tx8) Touch-Ansteuerungselektroden (Tx) sind, und die Mehrzahl von zweiten Elektroden (Rx11, Rx21, Rx31, Rx41,... Rx81) Touch-Sensorelektroden (Rx) sind.
10. Die Touch-Sensor-Anzeigevorrichtung des integrierten Typs gemäß Anspruch 8, ferner aufweisend mindestens eine Erste-Elektrode-Widerstand-reduzierende Leitung, die auf jeder der ersten Elektroden gebildet ist, wodurch ein Widerstand der ersten Elektroden reduziert ist.
11. Ein Verfahren zum Herstellen einer Touch-Sensor-Anzeigevorrichtung des integrierten Typs, aufweisend:

Abscheiden einer ersten leitfähigen Schicht auf einem Substrat (SUB1), und dann Bilden einer Mehrzahl von Gate-Leitungen (GL) und von Gate-Elektroden (G) unter Verwendung eines ersten Maskenprozesses;

nacheinander Bilden einer Gate-isolierenden Schicht (GI) und einer Halbleiterschicht auf dem Substrat, auf dem die Gate-Leitungen (GL) und Gate-Elektroden (G) gebildet sind, und dann Bilden von Halbleiter-Strukturen (A) gegenüber den Gate-Elektroden (G) mittels Strukturierens

der Halbleiterschicht unter Verwendung eines zweiten Maskenprozesses;
 Abscheiden einer zweiten leitfähigen Schicht auf der Gate-isolierenden Schicht (GI), auf der die Halbleiter-Strukturen (A) gebildet sind, und dann Bilden einer ersten leitfähigen-Struktur-Gruppe, die eine Mehrzahl von parallel zueinander verlaufenden Datenleitungen (DL), sich von den Datenleitungen (DL) erstreckende Source-Elektroden (S) und Drain-Elektroden (D) gegenüber den Source-Elektroden (S) aufweist, mittels Strukturierens der zweiten leitfähigen Schicht unter Verwendung eines dritten Maskenprozesses;
 nacheinander Bilden einer ersten Passivierungsschicht (PAS1) und einer dritten leitfähigen Schicht auf der Gate-isolierenden Schicht (GI), auf der die erste leitfähige-Struktur-Gruppe gebildet sind, und dann Bilden einer Mehrzahl von zweiten Elektroden (Rx1~Rx8; Tx1~Tx8) und von Verbindungsbereichen mittels Strukturierens der dritten leitfähigen Schicht unter Verwendung eines vierten Maskenprozesses;
 Abscheiden einer vierten leitfähigen Schicht auf der ersten Passivierungsschicht (PAS1), auf der die zweiten Elektroden und die Verbindungsbereiche gebildet sind, und dann Bilden von mindestens einer Zweite-Elektrode-Widerstand-reduzierenden Leitung, die mit jeder der zweiten Elektroden verbunden ist, mittels Strukturierens der vierten leitfähigen Schicht unter Verwendung eines fünften Maskenprozesses;
 Bilden einer zweiten Passivierungsschicht (PAS2) auf der ersten Passivierungsschicht (PAS1), auf der die zweiten Elektroden und die Zweite-Elektrode-Widerstand-reduzierenden Leitungen gebildet sind, und dann Bilden eines Kontaktloches (CH), das einen Bereich von jeder der Drain-Elektroden (D) freilegt, mittels Strukturierens der ersten und zweiten Passivierungsschichten (PAS1, PAS2) unter Verwendung eines sechsten Maskenprozesses;
 Abscheiden einer fünften leitfähigen Schicht auf der zweiten Passivierungsschicht (PAS2) mit dem Kontaktloch (CH), und dann Bilden von Erste-Elektrode-Widerstand-reduzierenden Leitungen parallel zu den Gate-Leitungen (GL) mittels Strukturierens der fünften leitfähigen Schicht unter Verwendung eines siebten Maskenprozesses; und
 Abscheiden einer sechsten leitfähigen Schicht auf der zweiten Passivierungsschicht (PAS2), auf der die Erste-Elektrode-Widerstand-reduzierenden Leitungen gebildet sind, und dann Bilden einer Mehrzahl von Pixelelektroden (Px) und einer Mehrzahl von ersten Elektroden (Tx11, Tx21, Tx31, Tx41,... Tx81; Rx11, Rx21,

Rx31, Rx41,... Rx81) mittels Strukturierens der sechsten leitfähigen Schicht unter Verwendung des achten Maskenprozesses, wobei die Mehrzahl von ersten Elektroden (Rx1~Rx8; Tx1~Tx8) als eines von Touch-Ansteuerungselektroden und Touch-Sensorelektroden dienen, wobei die Mehrzahl von zweiten Elektroden (Tx11, Tx21, Tx31, Tx41,... Tx81; Rx11, Rx21, Rx31, Rx41,... Rx81) derart gebildet sind, dass sie mit mindestens einem Bereich der Pixelelektroden (Px) überlappen und sich kontinuierlich in der Richtung der Gate-Leitungen (GL) über zueinander benachbarte Pixelelektroden der Pixelelektroden (Px), die in der Richtung der Gate-Leitungen (GL) angeordnet sind, hinweg erstrecken, und derart angeordnet sind, dass sie in der Richtung der Datenleitungen (DL) zueinander benachbart angeordnet sind, wobei jeweils zwei zueinander benachbarte zweite Elektroden der Mehrzahl von zweiten Elektroden (Tx11, Tx21, Tx31, Tx41,... Tx81; Rx11, Rx21, Rx31, Rx41,... Rx81) in der Richtung der Datenleitungen (DL) mittels mindestens eines Verbindungsbereichs miteinander verbunden sind, der sich kontinuierlich von den zueinander benachbarten zweiten Elektroden derart erstreckt, dass die Mehrzahl von zweiten Elektroden (Tx11, Tx21, Tx31, Tx41,... Tx81; Rx11, Rx21, Rx31, Rx41,... Rx81) zusammen mit den Verbindungsbereichen Gruppen von zweiten Elektroden bildet, wobei die Mehrzahl von zweiten Elektroden (Tx11, Tx21, Tx31, Tx41,... Tx81; Rx11, Rx21, Rx31, Rx41,... Rx81) als Touch-Sensorelektroden (COM) dienen, wenn die Mehrzahl von ersten Elektroden (Rx1~Rx8; Tx1~Tx8) als die Touch-Ansteuerungselektroden dienen, und als Touch-Ansteuerungselektroden dienen, wenn die Mehrzahl von ersten Elektroden (Rx1~Rx8; Tx1~Tx8) als die Touch-Sensorelektroden dienen, und wobei Gruppen von zweiten Elektroden (Tx11, Tx21, Tx31, Tx41,... Tx81; Rx11, Rx21, Rx31, Rx41,... Rx81) als eine gemeinsame Elektrode (COM) zum Ansteuern der Anzeigevorrichtung dienen, und wobei die Mehrzahl von ersten Elektroden (Rx1~Rx8; Tx1~Tx8) und die Verbindungsbereiche derart angeordnet sind, dass sie einander überkreuzen.

12. Das Verfahren gemäß Anspruch 11, wobei die zweiten Elektroden (Rx1~Rx8; Tx1~Tx8) parallel zu den Datenleitungen (DL) gebildet sind und in mindestens zwei Pixelbereichen von Pixelbereichen mit der Gate-Leitung (GL) dazwischen, und definiert durch Überkreuzungen der Gate-Leitungen (GL) und der Datenleitungen (DL), gebildet sind und die Gate-Lei-

tung (GL) dazwischen aufweisen,
 wobei die Mehrzahl von Zweite-Elektrode-Wider-
 stand-reduzierenden Leitungen jeweils mit der
 Mehrzahl von zweiten Elektroden überlappt, wo-
 durch ein Widerstand der zweiten Elektroden redu-
 ziert ist, 5
 wobei die Mehrzahl von Pixelelektroden (Px) in den
 Pixelbereichen gebildet sind;
 wobei die Mehrzahl von ersten Elektroden parallel
 zueinander auf der zweiten Passivierungs-Schicht
 (PAS2) zwischen den Pixelelektroden (Px), die zu-
 einander benachbart sind mit der Gate-Leitung (GL)
 dazwischen, gebildet ist, und 10
 die mindestens eine Erste-Elektrode-Widerstand-
 reduzierende Leitung auf jeder der Mehrzahl von
 ersten Elektroden gebildet ist, wodurch ein Wider-
 stand der ersten Elektroden reduziert ist. 15

Revendications

1. Dispositif d'affichage de type à capteur tactile intégré comprenant :

une pluralité de lignes de grille (GL) ; 25
 une pluralité de lignes de données (DL) croisant
 la pluralité des lignes de grille (GL) ;
 une pluralité d'électrodes de pixel (Px) formées
 dans des zones définies par le croisement des
 lignes de grille (GL) et des lignes de données 30
 (DL) ;
 une pluralité de premières électrodes (Rx1 à
 Rx8 ; Tx1 à Tx8) formées entre les électrodes
 de pixel (Px) qui sont voisines les unes des
 autres avec une ligne de grille (GL) entre elles, 35
 la pluralité de premières électrodes (Rx1 à Rx8 ;
 Tx1 à Tx8) servant soit en tant qu'électrodes de
 commande tactile, soit en tant qu'électrodes de
 détection de contact ;
 une pluralité de deuxièmes électrodes (Tx11, 40
 Tx21, Tx31, Tx41, ... Tx81 ; Rx11, Rx21, Rx31,
 Rx41, ... Rx81) étant formées de manière à re-
 couvrir au moins une partie de l'électrode de
 pixel (Px) et à s'étendre continûment dans la 45
 direction des lignes de grille (GL) à travers des
 électrodes de pixel adjacentes parmi les élec-
 trodes de pixel (Px) agencées dans la direction
 des lignes de grille (GL) et agencées adjacentes
 les unes aux autres dans la direction des lignes
 de données (DL), dans lequel toutes les deux 50
 deuxièmes électrodes adjacentes de la pluralité
 de deuxièmes électrodes (Tx11, Tx21, Tx31,
 Tx41, ... Tx81 ; Rx11, Rx21, Rx31, Rx41, ...
 Rx81) sont connectées l'une à l'autre dans la
 direction des lignes de données (DL) par au 55
 moins une partie de connexion formée dans la
 même couche que les deuxièmes électrodes et
 s'étendant continûment à partir des deuxièmes

électrodes adjacentes de sorte que la pluralité
 de deuxièmes électrodes (Tx11, Tx21, Tx31,
 Tx41, ... Tx81 ; Rx11, Rx21, Rx31, Rx41, ...
 Rx81) avec les parties de connexion forment
 des groupes de deuxièmes électrodes, la plura-
 lité de deuxièmes électrodes (Tx11, Tx21, Tx31,
 Tx41, ... Tx81 ; Rx11, Rx21, Rx31, Rx41, ...
 Rx81) servant en tant qu'électrodes de détec-
 tion de contact (COM) si la pluralité de premières
 électrodes (Rx1 à Rx8 ; Tx1 à Tx8) servent en
 tant qu'électrodes de commande tactile, et ser-
 vant en tant qu'électrodes de commande tactile
 si la pluralité de premières électrodes (Rx1 à
 Rx8 ; Tx1 à Tx8) servent en tant qu'électrodes
 de détection de contact,
 dans lequel les groupes de deuxièmes électro-
 des (Tx11, Tx21, Tx31, Tx41, ... Tx81 ; Rx11,
 Rx21, Rx31, Rx41, ... Rx81) servent en tant
 qu'électrode commune (COM) pour comman-
 der le dispositif d'affichage,
 dans lequel la pluralité de premières électrodes
 (Rx1 à Rx8 ; Tx1 à Tx8) et les parties de con-
 exion sont agencées de manière à se croiser,
 et
 dans lequel le dispositif d'affichage de type à
 capteur tactile intégré est configuré pour détec-
 ter une position de contact en mesurant une va-
 riation de capacitance mutuelle entre les élec-
 trodes de commande tactile (Tx) et les électro-
 des de détection de contact (Rx).

2. Dispositif d'affichage de type à capteur tactile intégré
 selon la revendication 1, dans lequel la pluralité de
 premières électrodes (Rx1 à Rx8) sont des électro-
 des de détection de contact (Rx), et la pluralité de
 deuxièmes électrodes (Tx11, Tx21, Tx31, Tx41, ...
 Tx81) sont des électrodes de commande tactile (Tx).

3. Dispositif d'affichage de type à capteur tactile intégré
 selon la revendication 1, dans lequel la pluralité de
 premières électrodes (Tx1 à Tx8) sont des électro-
 des de commande tactile (Tx), et la pluralité de
 deuxièmes électrodes (Rx11, Rx21, Rx31, Rx41, ...
 Rx81) sont des électrodes de détection de contact
 (Rx).

4. Dispositif d'affichage de type à capteur tactile intégré
 selon la revendication 1, comprenant en outre au
 moins un premier fil de réduction de résistance
 d'électrode formé sur chacune desdites premières
 électrodes, réduisant de ce fait la résistance des pre-
 mières électrodes.

5. Dispositif d'affichage de type à capteur tactile intégré
 selon la revendication 1, comprenant en outre :
 une couche d'isolement de grille (GI) entre les
 lignes de grille (GL) et les lignes de données

- (DL) pour recouvrir les lignes de grille (GL) ;
une pluralité de transistors à couches minces (TFT) formés dans des zones de pixel définies par le croisement des lignes de grille (GL) et des lignes de données (DL) ;
une première couche de passivation (PAS1) recouvrant la couche d'isolement de grille (GI) sur laquelle les transistors à couches minces (TFT) sont formés ; et
une deuxième couche de passivation (PAS2) recouvrant les deuxième électrodes qui sont formées sur la première couche de passivation (PAS1) pour qu'elle soit parallèle aux lignes de grille (GL) et formée dans au moins deux zones de pixel voisines l'une de l'autre avec une ligne de grille (GL) entre elles,
la pluralité d'électrodes de pixel (Px) sont formées sur la deuxième couche de passivation (PAS2) dans les zones de pixel, respectivement, chacune des électrodes de pixel (Px) étant recouverte par ladite au moins une partie de la deuxième électrode,
dans lequel les premières électrodes (Rx1 à Rx8) sont formées sur la deuxième couche de passivation (PAS2) entre les électrodes de pixel (Px) qui sont voisines les unes des autres avec la ligne de grille (GL) entre elles, et formées parallèlement à la ligne de grille (GL).
6. Dispositif d'affichage de type à capteur tactile intégré selon la revendication 5, dans lequel la pluralité de premières électrodes (Rx1 à Rx8) sont des électrodes de détection de contact (Rx), et la pluralité de deuxième électrodes (Tx11, Tx21, Tx31, Tx41, ... Tx81) sont des électrodes de commande tactile (Tx).
7. Dispositif d'affichage de type à capteur tactile intégré selon la revendication 5, comprenant en outre au moins un deuxième fil de réduction de résistance d'électrode formé sur chacune desdites deuxième électrodes, réduisant de ce fait la résistance des deuxième électrodes.
8. Dispositif d'affichage de type à capteur tactile intégré selon la revendication 1, comprenant en outre :
- une couche d'isolement de grille (GI) entre les lignes de grille (GL) et les lignes de données (DL) pour recouvrir les lignes de grille (GL) ;
une pluralité de transistors à couches minces (TFT) formés dans des zones de pixel définies par les croisements des lignes de grille (GL) et des lignes de données (DL), respectivement ; et
une première couche de passivation (PAS1) recouvrant la couche d'isolement de grille (GI) sur laquelle les transistors à couches minces (TFT) sont formés ; et
une deuxième couche de passivation (PAS2) recouvrant la pluralité de premières électrodes qui sont formées sur la première couche de passivation (PAS1) pour qu'elle soit parallèle aux lignes de grille (GL) entre les électrodes de pixel (Px) voisines les unes des autres avec une ligne de grille (GL) entre elles,
dans lequel la pluralité d'électrodes de pixel (Px) sont formées sur la première couche de passivation (PAS1) dans les zones de pixel, respectivement, et
dans lequel la pluralité de deuxième électrodes sont formées sur la deuxième couche de passivation (PAS2) dans au moins deux zones de pixel avec une ligne de grille (GL) entre elles, une partie de chaque deuxième électrode étant recouverte par l'électrode de pixel (Px) pour qu'elle soit parallèle à la ligne de données (DL).
9. Dispositif d'affichage de type à capteur tactile intégré selon la revendication 8, dans lequel la pluralité de premières électrodes (Tx1 à Tx8) sont des électrodes de commande tactile (Tx), et la pluralité de deuxième électrodes (Rx11, Rx21, Rx31, Rx41, ... Rx81) sont des électrodes de détection de contact (Rx).
10. Dispositif d'affichage de type à capteur tactile intégré selon la revendication 8, comprenant en outre au moins un premier fil de réduction de résistance d'électrode formé sur chacune desdites premières électrodes, réduisant de ce fait la résistance des premières électrodes.
11. Procédé de fabrication d'un dispositif d'affichage de type à capteur tactile intégré comprenant :
- le dépôt d'une première couche conductrice sur un substrat (SUB1), et ensuite la formation d'une pluralité de lignes de grille (GL) et d'électrodes de grille (G) en utilisant un premier processus de masquage ;
la formation séquentiellement d'une couche d'isolement de grille (GI) et d'une couche semi-conductrice sur le substrat sur lequel les lignes de grille (GL) et les électrodes de grille (G) sont formées, et ensuite la formation de motifs semi-conducteurs (A) face aux électrodes de grille (G) en structurant la couche semi-conductrice en utilisant un deuxième processus de masquage ;
le dépôt d'une deuxième couche conductrice sur la couche d'isolement de grille (GI) sur laquelle les motifs semi-conducteurs (A) sont formés, et ensuite la formation d'un premier groupe de motifs conducteurs comprenant une pluralité de lignes de données (DL) parallèles les unes aux autres, des électrodes de source (S) s'étendant des lignes de données (DL), et des électrodes de drain (D) opposées aux électrodes de source

(S) en structurant la deuxième couche conductrice en utilisant un troisième processus de masquage ;

la formation séquentiellement d'une première couche de passivation (PAS1) et d'une troisième couche conductrice sur la couche d'isolement de grille (GI) sur laquelle le premier groupe de motifs conducteurs est formé, et ensuite la formation d'une pluralité de deuxième électrodes (Rx1 à Rx8 ; Tx1 à Tx8) et de parties de connexion en structurant la troisième couche conductrice en utilisant un quatrième processus de masquage ;

le dépôt d'une quatrième couche conductrice sur la première couche de passivation (PAS1) sur laquelle les deuxième électrodes et les parties de connexion sont formées, et ensuite la formation d'au moins un deuxième fil de réduction de résistance d'électrode connecté à chacune des deuxième électrodes en structurant la quatrième couche conductrice en utilisant un cinquième processus de masquage ;

la formation d'une deuxième couche de passivation (PAS2) sur la première couche de passivation (PAS1) sur laquelle les deuxième électrodes et les deuxième fils de réduction de résistance d'électrode sont formés, et ensuite la formation d'un trou de contact (CH) exposant une partie de chacune des électrodes de drain (D) en structurant les première et deuxième couches de passivation (PAS1, PAS2) en utilisant un sixième processus de masquage ;

le dépôt d'une cinquième couche conductrice sur la deuxième couche de passivation (PAS2) avec le trou de contact (CH), et ensuite la formation de premiers fils de réduction de résistance d'électrode parallèlement à la ligne de grille (GL) en structurant la cinquième couche conductrice en utilisant un septième processus de masquage ; et

le dépôt d'une sixième couche conductrice sur la deuxième couche de passivation (PAS2) sur laquelle les premiers fils de réduction de résistance d'électrode sont formés, et ensuite la formation d'une pluralité d'électrodes de pixel (Px) et d'une pluralité de première électrodes (Tx11, Tx21, Tx31, Tx41, ... Tx81 ; Rx11, Rx21, Rx31, Rx41, ... Rx81) en structurant la sixième couche conductrice en utilisant le huitième processus de masquage,

dans lequel la pluralité de première électrodes (Rx1 à Rx8 ; Tx1 à Tx8) servent soit en tant qu'électrodes de commande tactile, soit en tant qu'électrodes de détection de contact,

dans lequel la pluralité de deuxième électrodes (Tx11, Tx21, Tx31, Tx41, ... Tx81 ; Rx11, Rx21, Rx31, Rx41, ... Rx81) sont formées de manière à recouvrir au moins une partie des électrodes

de pixel (Px) et à s'étendre continûment dans la direction des lignes de grille (GL) à travers les électrodes de pixel adjacentes parmi les électrodes de pixel (Px) agencées dans la direction des lignes de grille (GL) et sont agencées adjacentes les unes aux autres dans la direction des lignes de données (DL), dans lequel toutes les deux deuxième électrodes adjacentes de la pluralité de deuxième électrodes (Tx11, Tx21, Tx31, Tx41, ... Tx81 ; Rx11, Rx21, Rx31, Rx41, ... Rx81) sont connectées les unes aux autres dans la direction des lignes de données (DL) par au moins une partie de connexion s'étendant continûment à partir des deuxième électrodes adjacentes de sorte que la pluralité de deuxième électrodes (Tx11, Tx21, Tx31, Tx41, ... Tx81 ; Rx11, Rx21, Rx31, Rx41, ... Rx81) avec les parties de connexion forment des groupes de deuxième électrodes, la pluralité de deuxième électrodes (Tx11, Tx21, Tx31, Tx41, ... Tx81 ; Rx11, Rx21, Rx31, Rx41, ... Rx81) servent en tant qu'électrodes de détection de contact (COM) si la pluralité de première électrodes (Rx1 à Rx8 ; Tx1 à Tx8) servent en tant qu'électrodes de commande tactile, et servent en tant qu'électrodes de commande tactile si la pluralité de première électrodes (Rx1 à Rx8 ; Tx1 à Tx8) servent en tant qu'électrodes de détection de contact, et

dans lequel les groupes de deuxième électrodes (Tx11, Tx21, Tx31, Tx41, ... Tx81 ; Rx11, Rx21, Rx31, Rx41, ... Rx81) servent en tant qu'électrode commune (COM) pour commander le dispositif d'affichage, et

dans lequel la pluralité de première électrodes (Rx1 à Rx8 ; Tx1 à Tx8) et les parties de connexion sont agencées de manière à se croiser.

12. Procédé selon la revendication 11, dans lequel les deuxième électrodes (Rx1 à Rx8 ; Tx1 à Tx8) sont formées parallèlement aux lignes de données (DL), et formées dans au moins deux zones de pixel parmi les zones de pixel avec la ligne de grille (GL) entre elles, et définies par les croisements des lignes de grille (GL) et des lignes de données (DL) et ont la ligne de grille (GL) entre elles, la pluralité de deuxième fils de réduction de résistance d'électrode sont recouverts par la pluralité de deuxième électrodes, respectivement, réduisant de ce fait la résistance des deuxième électrodes, la pluralité d'électrodes de pixel (Px) sont formées dans les zones de pixel ; la pluralité de première électrodes sont formées parallèlement les unes aux autres sur la deuxième couche de passivation (PAS2) entre les électrodes de pixel (Px) qui sont voisines les unes des autres avec la ligne de grille (GL) entre elles, et ledit au moins un premier fil de réduction de résis-

tance d'électrode est formé sur chacune de la pluralité de premières électrodes, réduisant de ce fait la résistance des premières électrodes.

5

10

15

20

25

30

35

40

45

50

55

FIG. 1

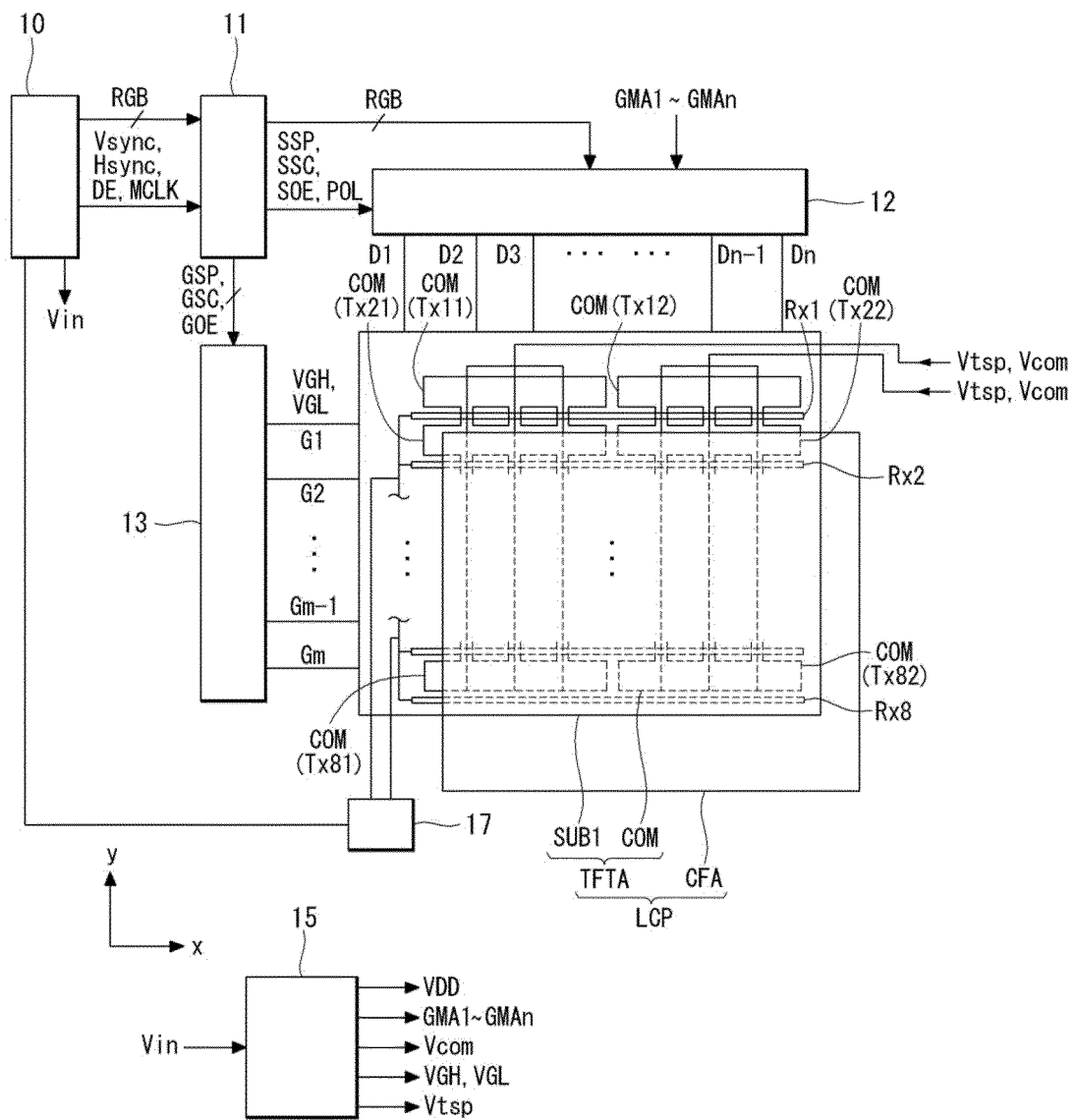


FIG. 2

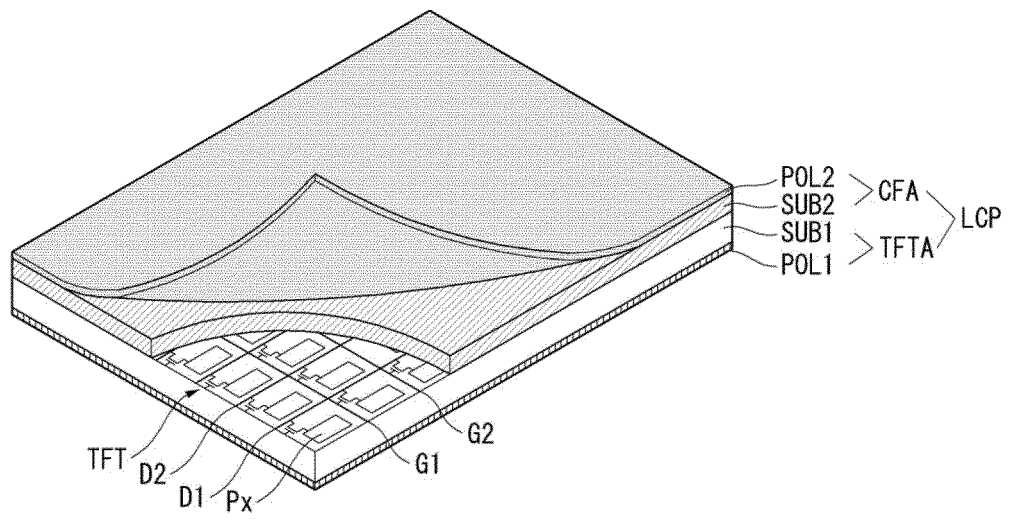


FIG. 3

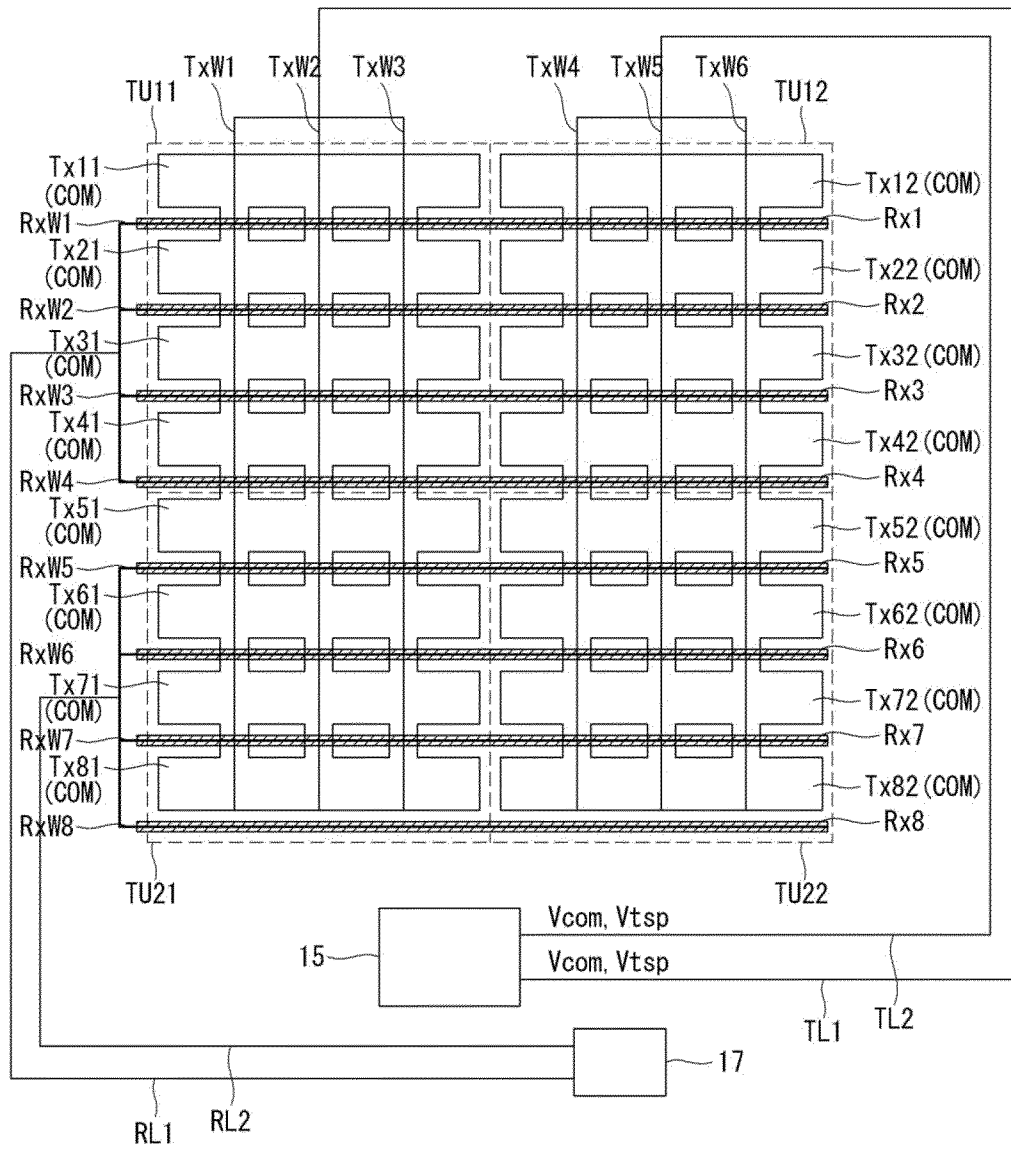


FIG. 4A

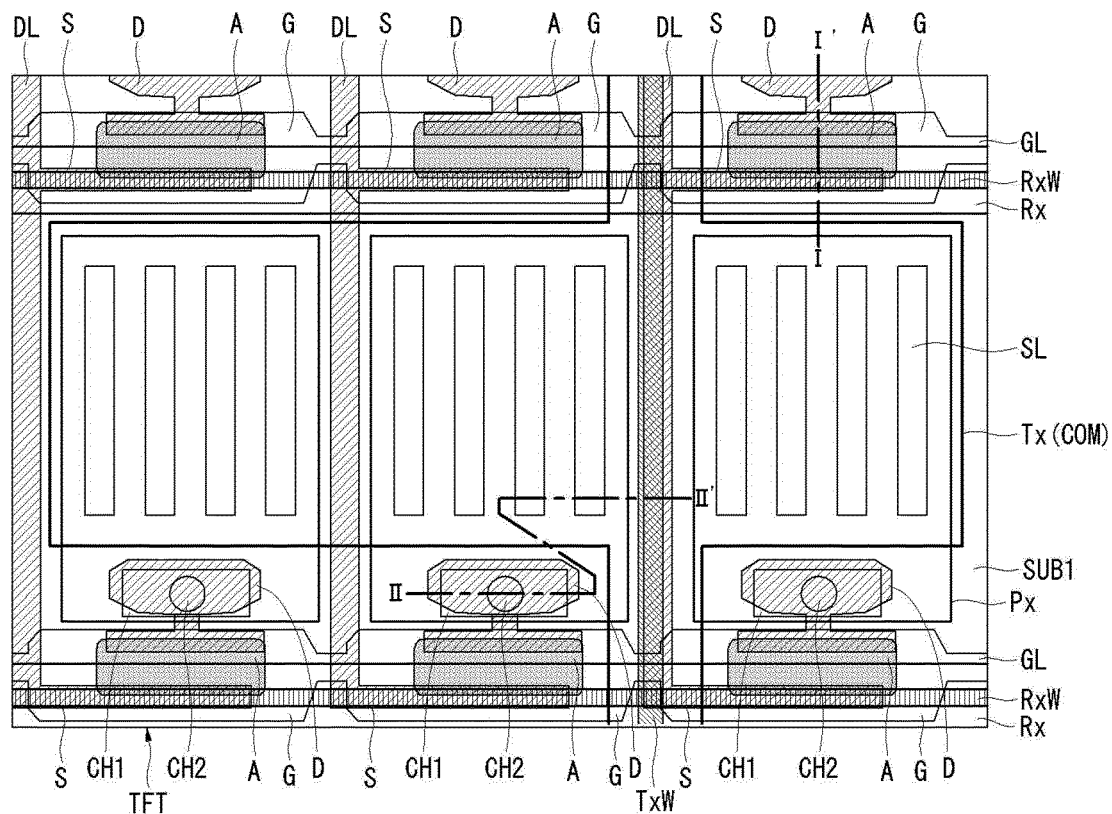


FIG. 4B

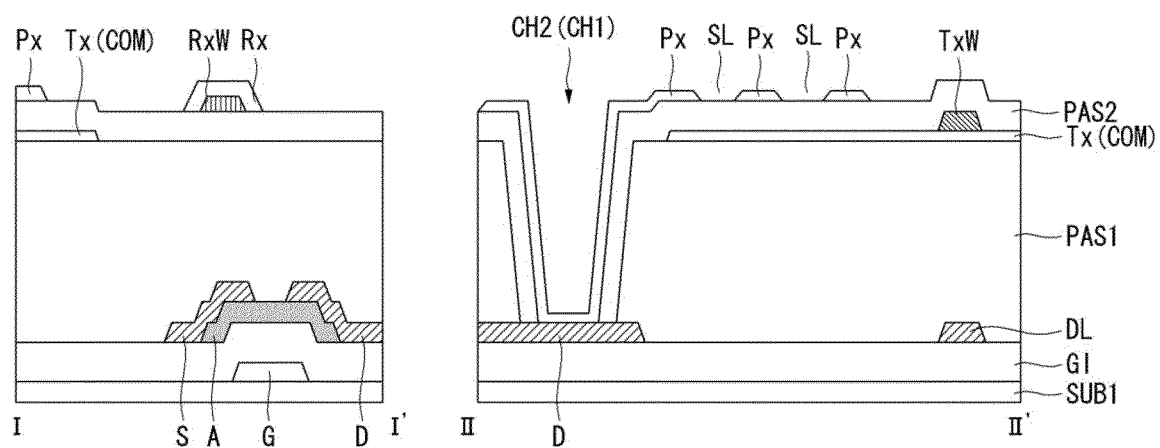


FIG. 5A

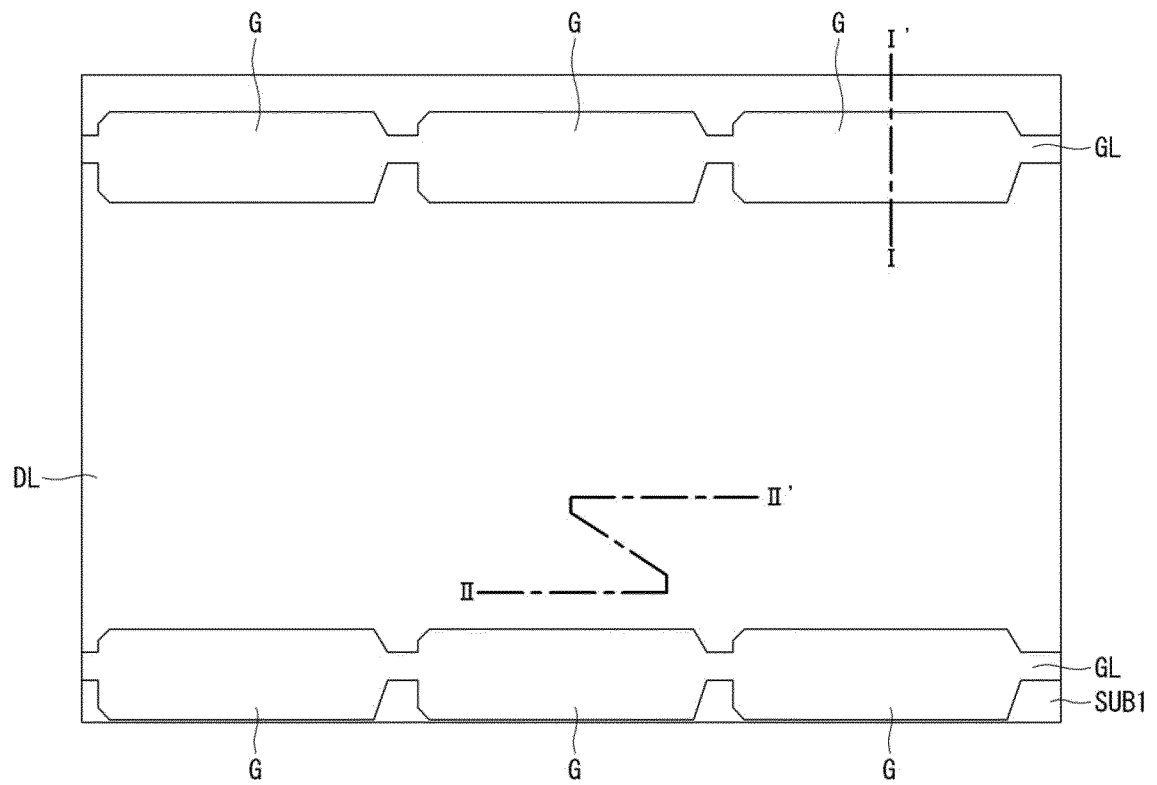


FIG. 5B



FIG. 6A

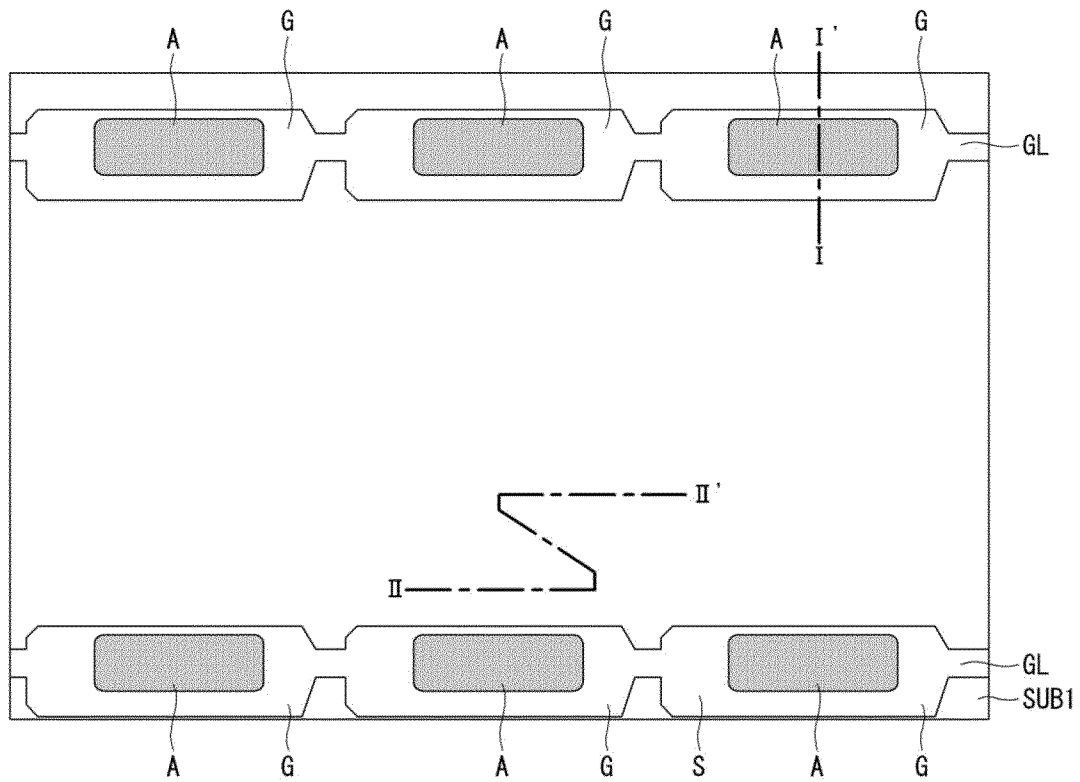


FIG. 6B

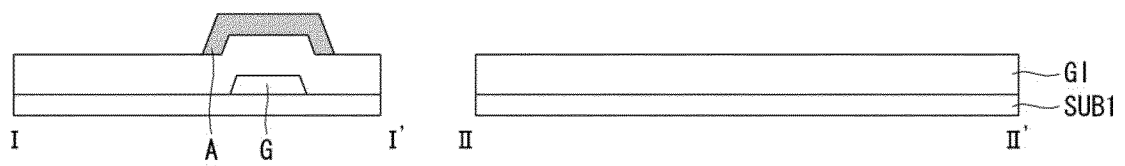


FIG. 7A

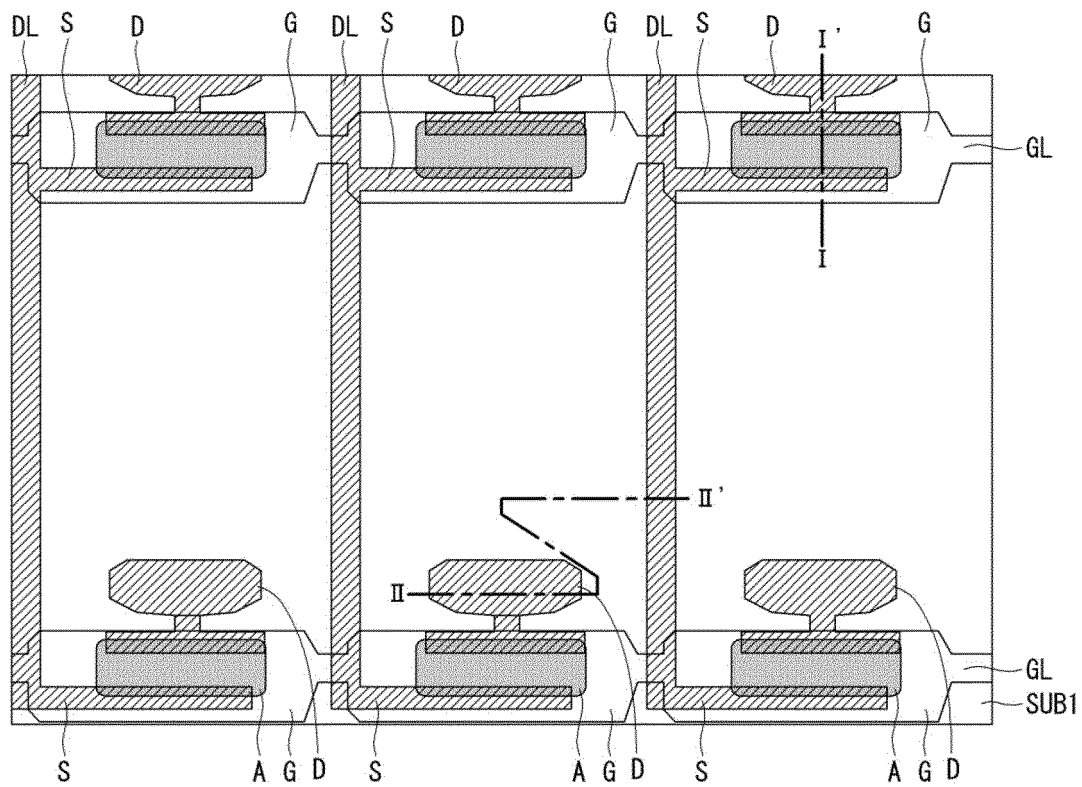


FIG. 7B

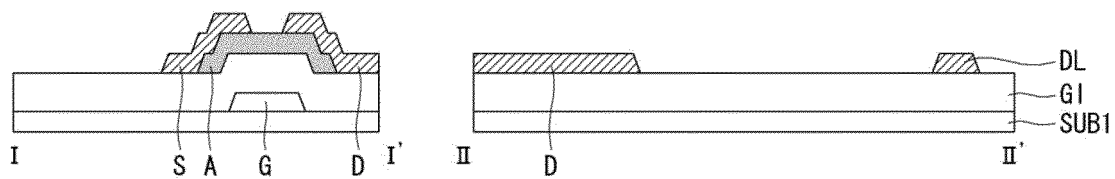


FIG. 8A

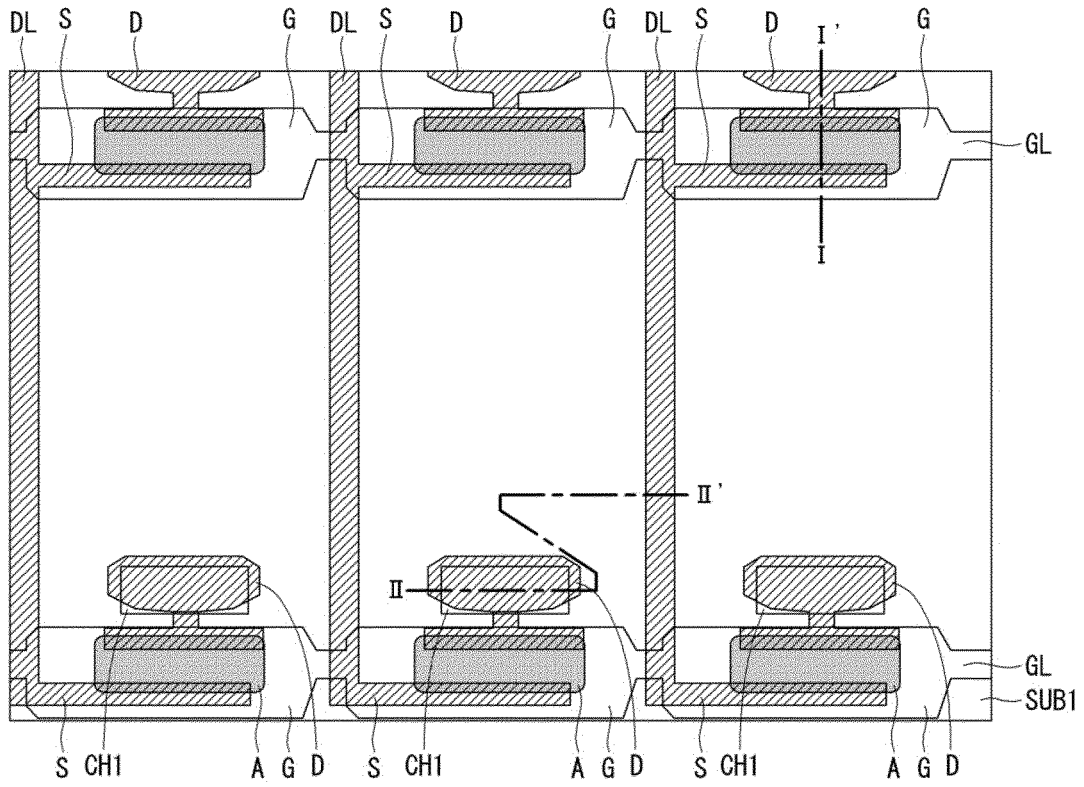


FIG. 8B

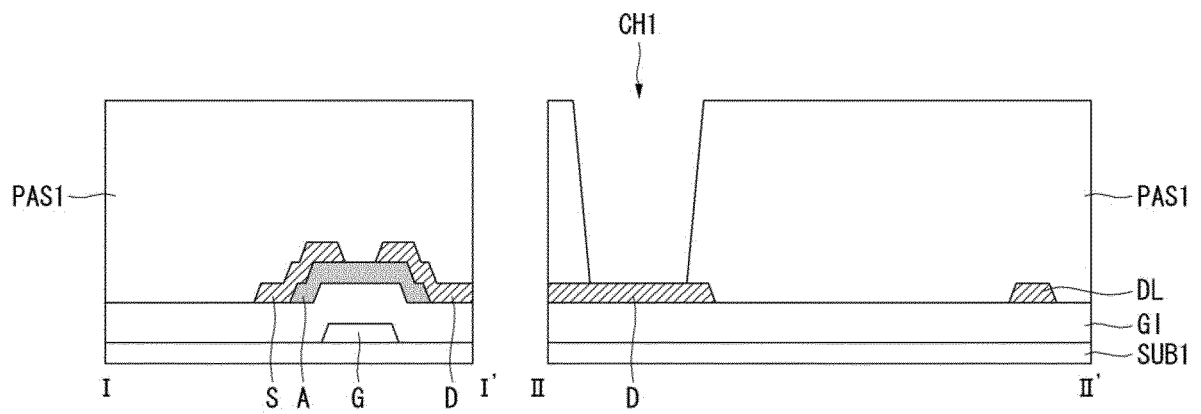


FIG. 9A

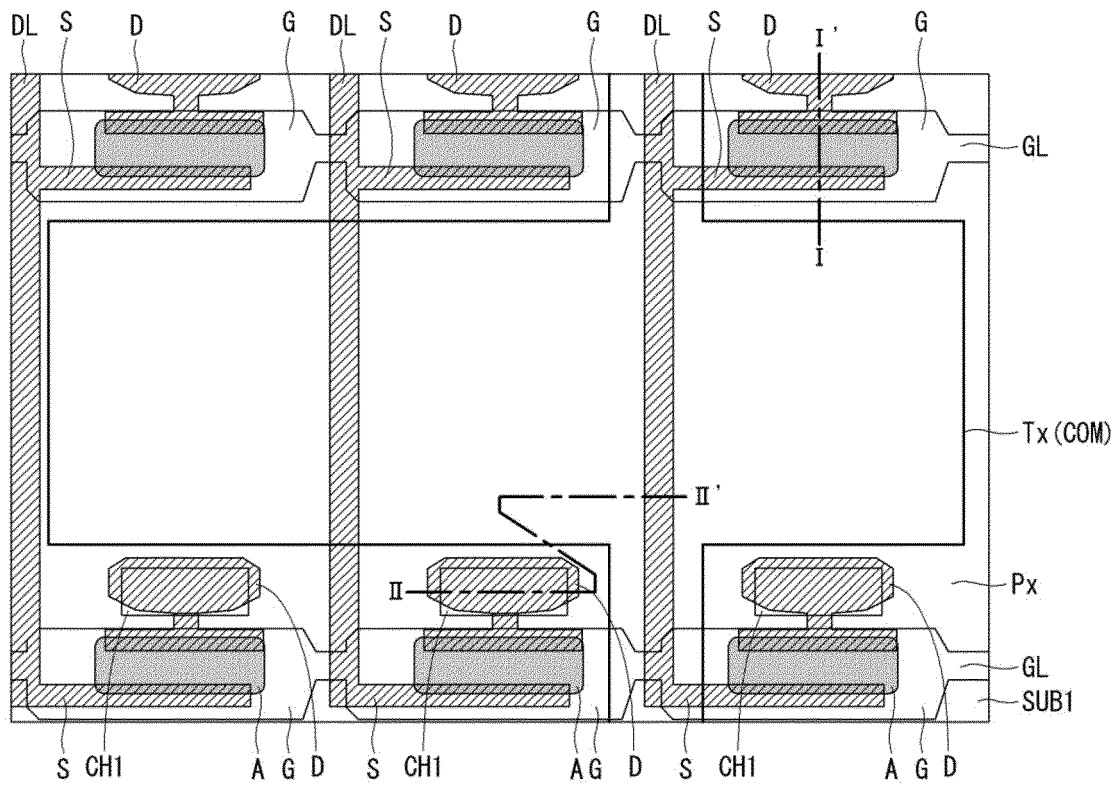


FIG. 9B

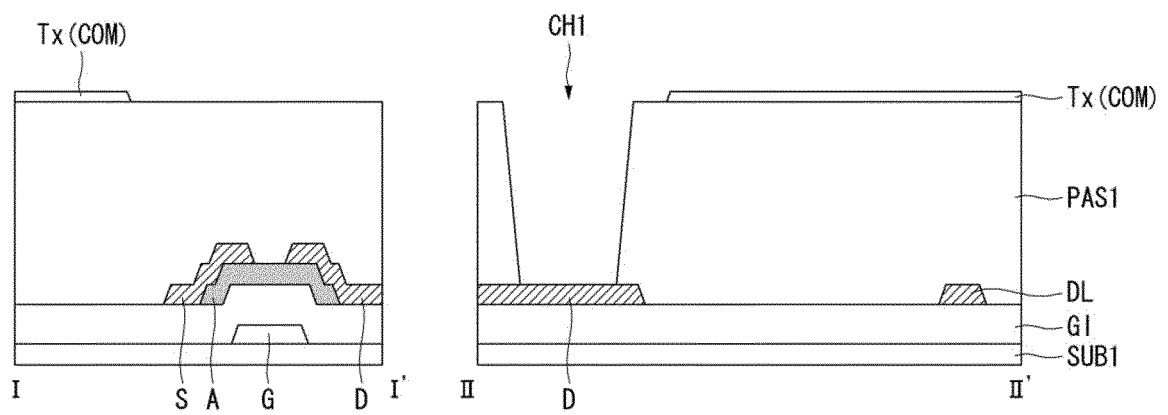


FIG. 10A

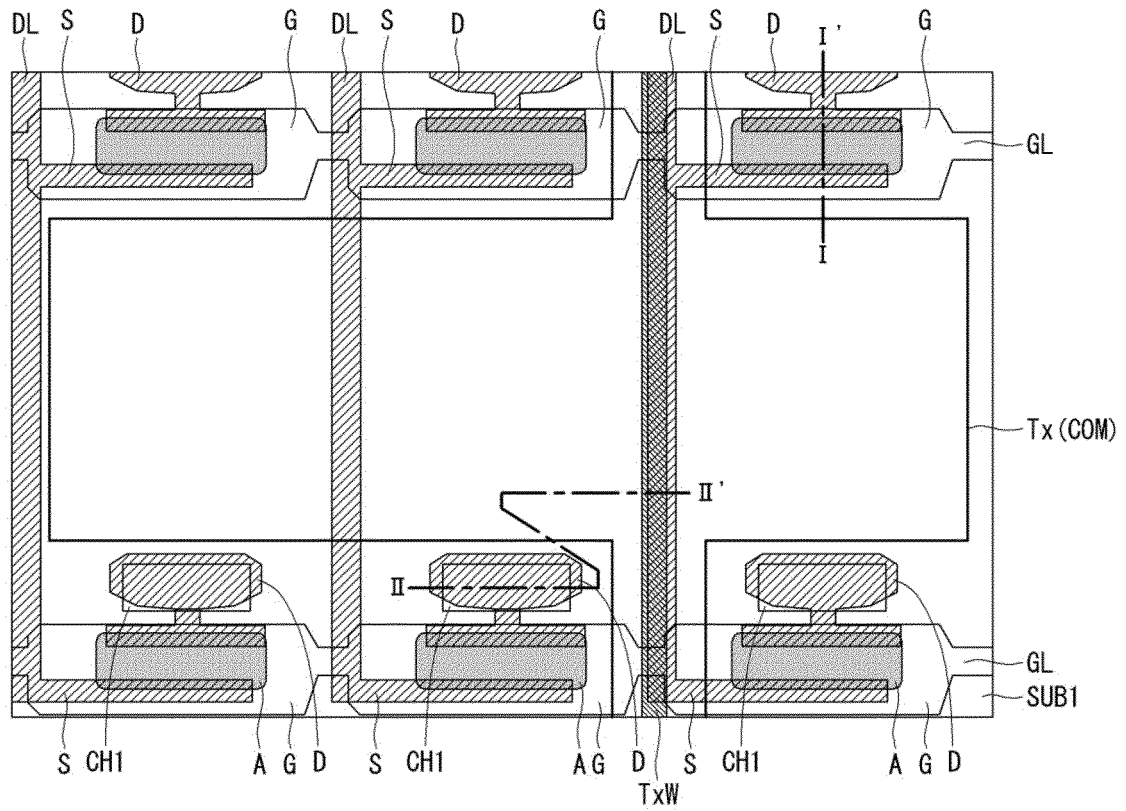


FIG. 10B

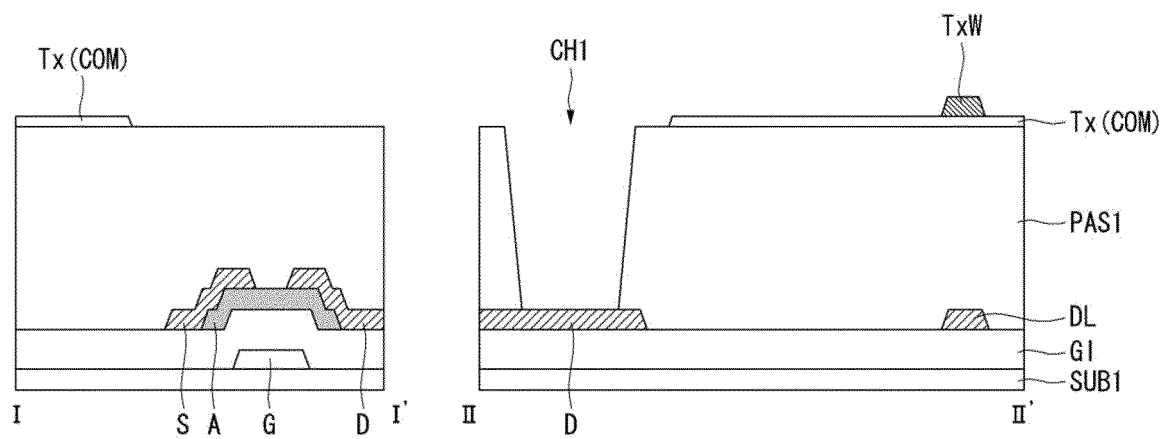


FIG. 11A

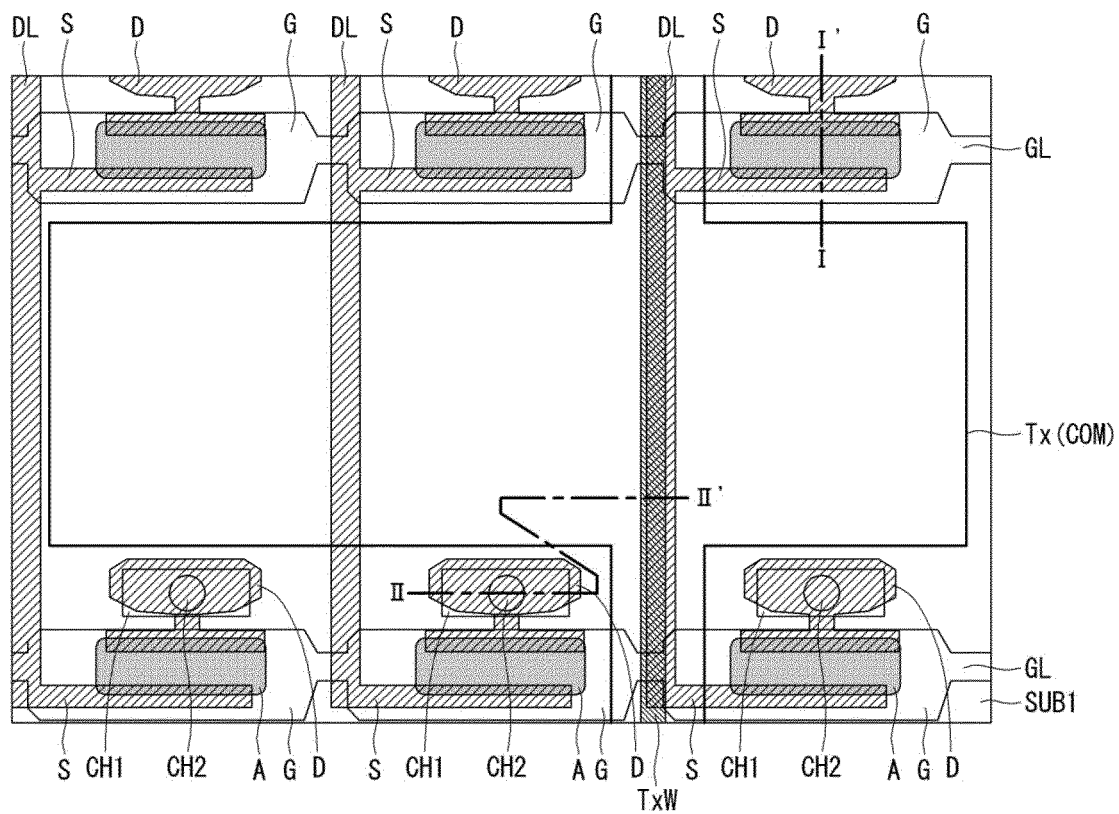


FIG. 11B

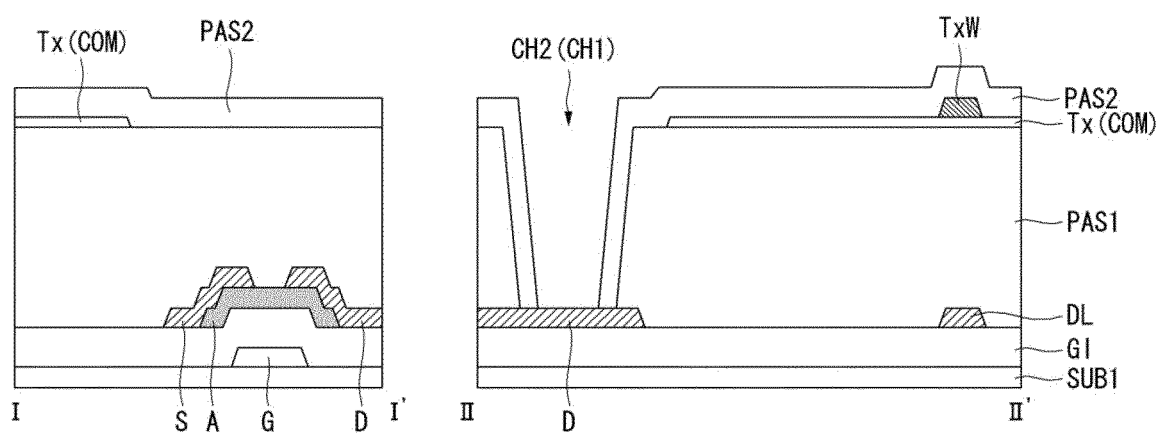


FIG. 12A

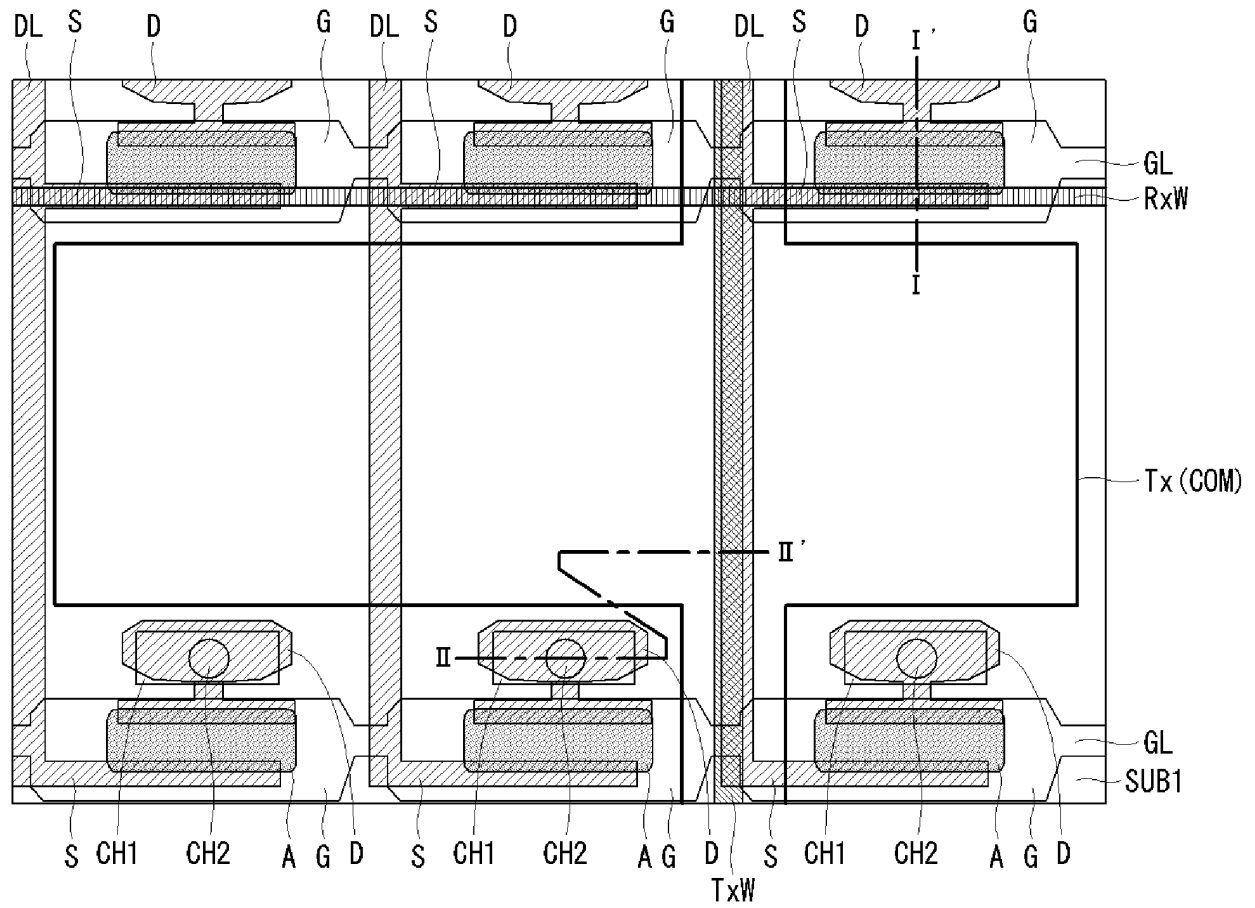


FIG. 12B

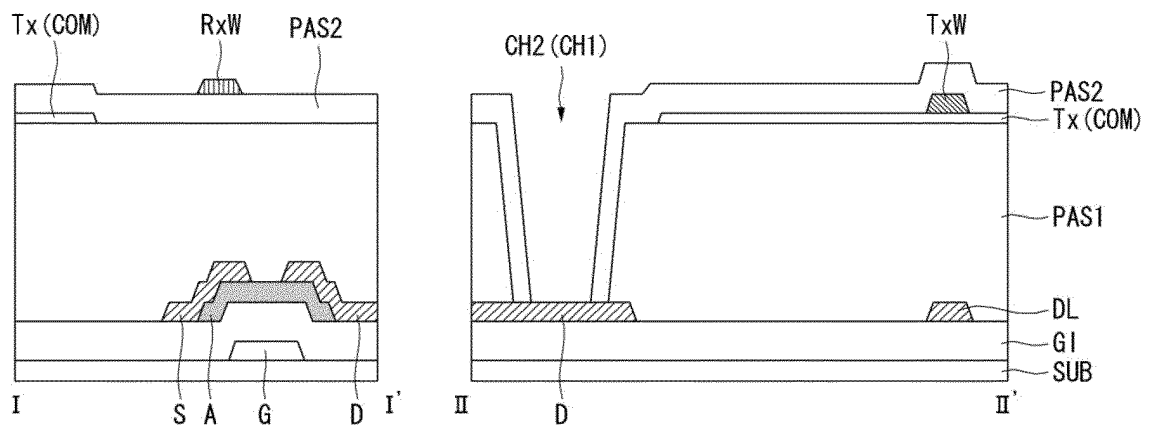


FIG. 13A

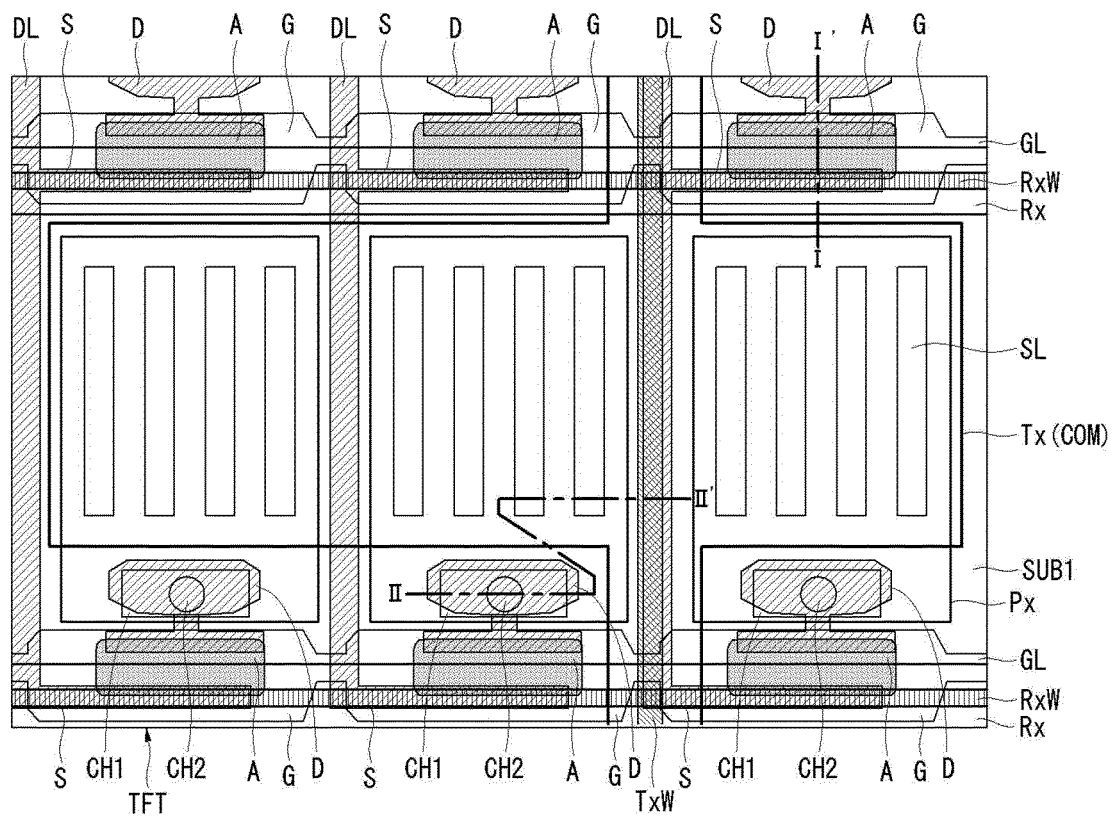


FIG. 13B

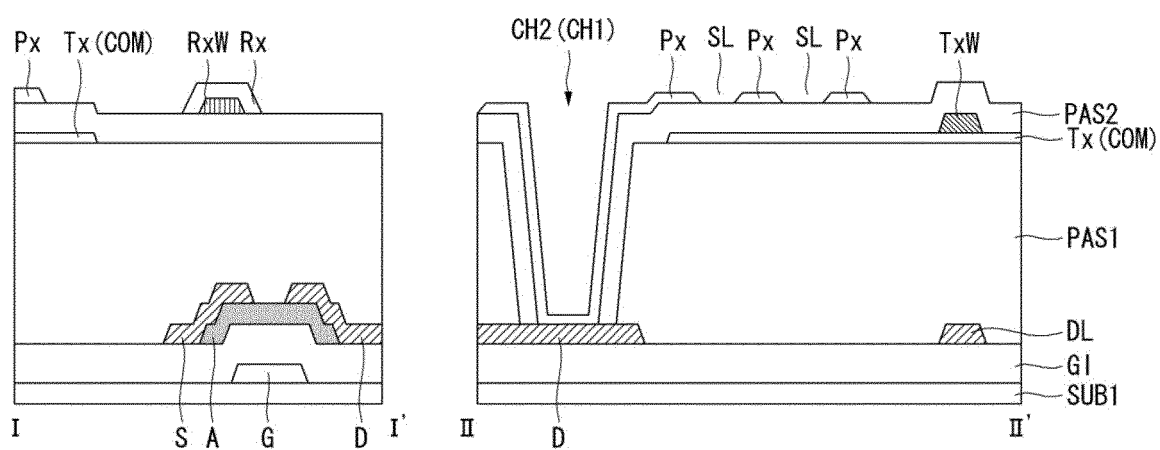


FIG. 14

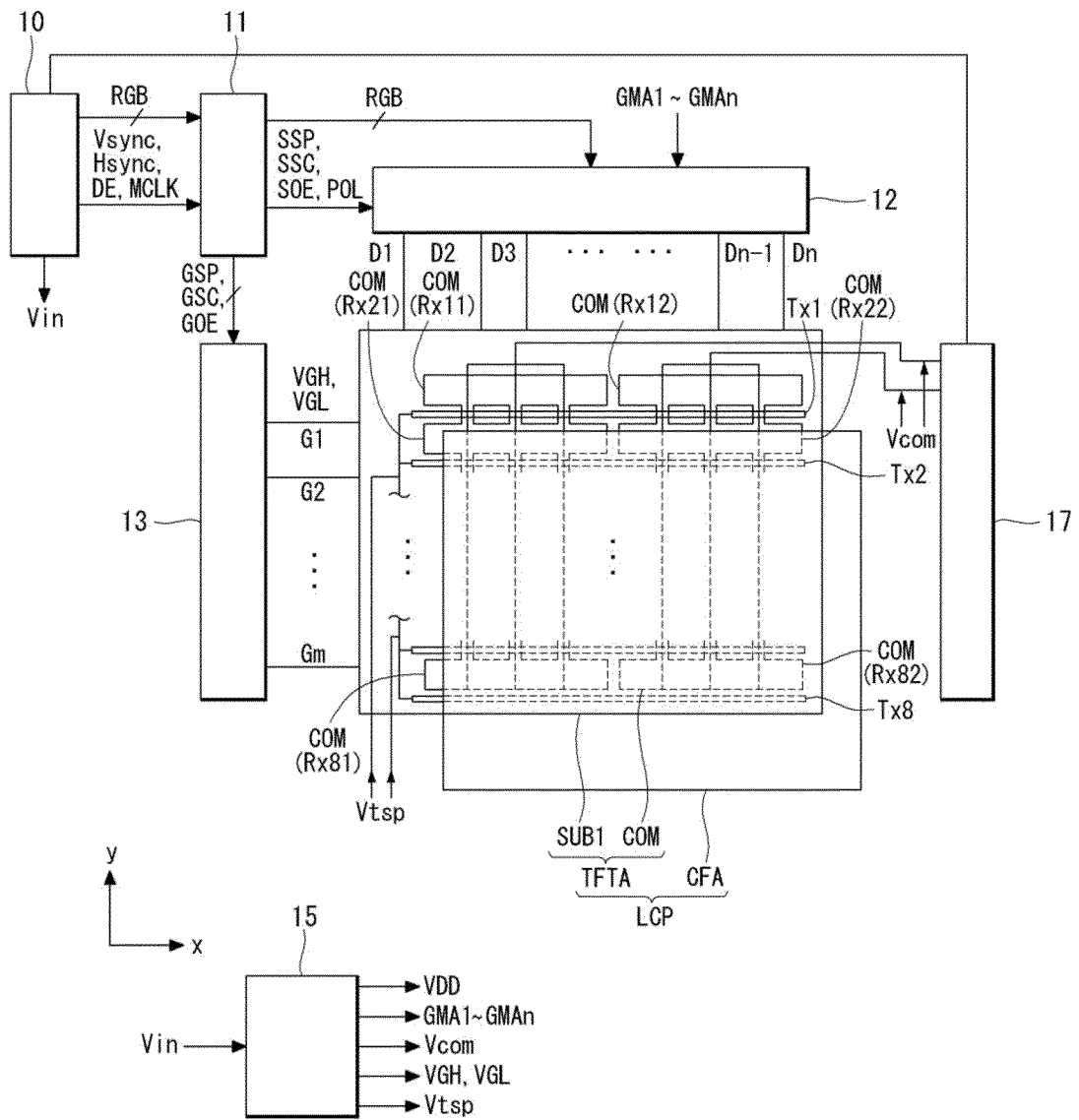


FIG. 15

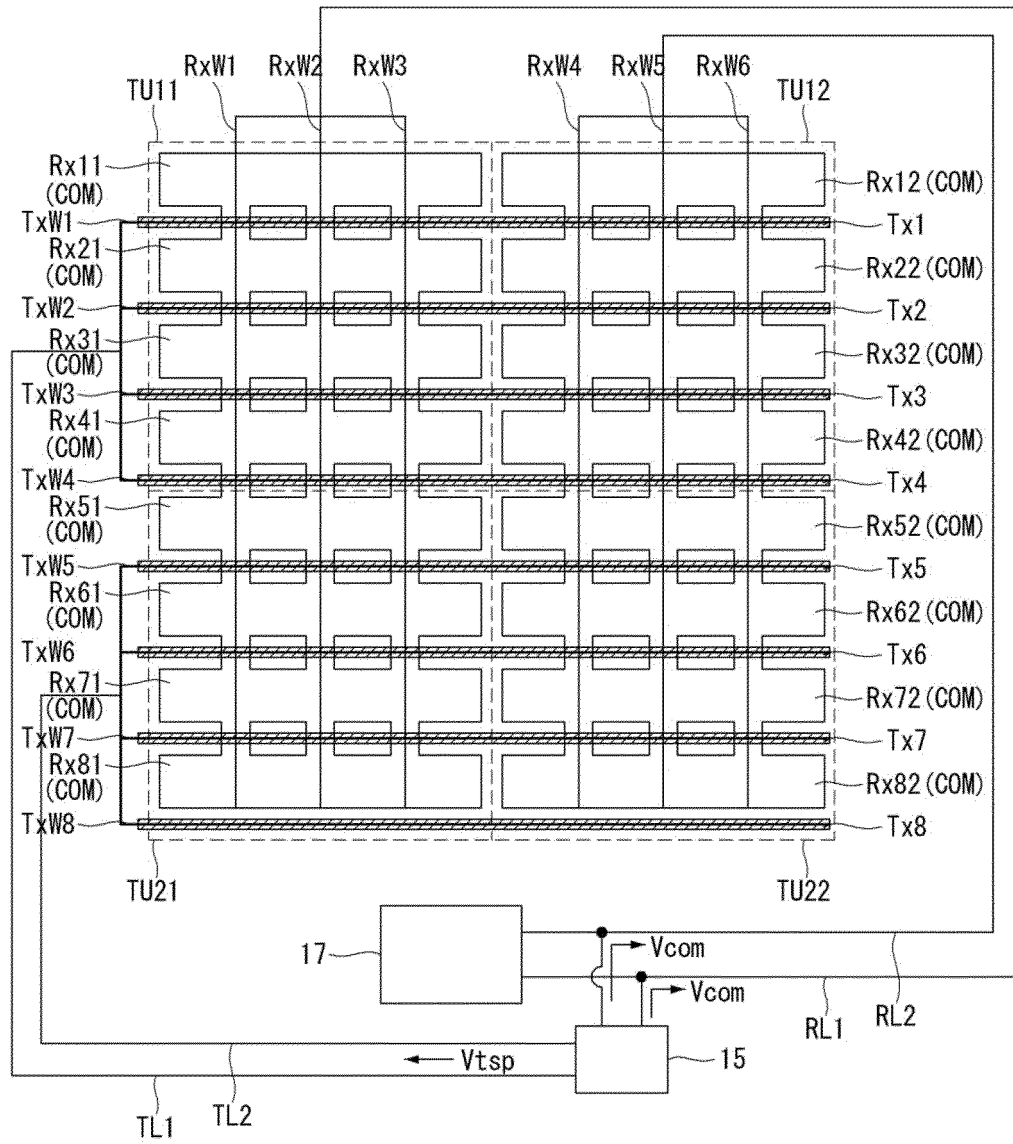


FIG. 16A

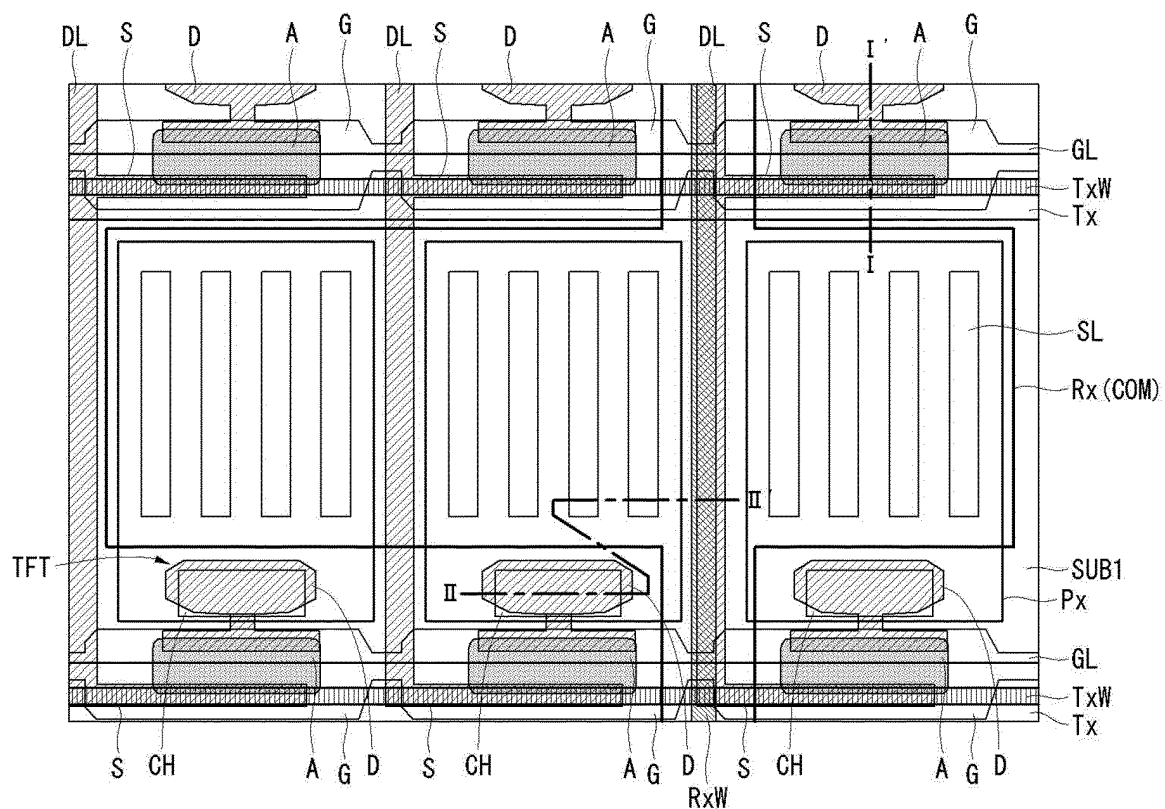


FIG. 16B

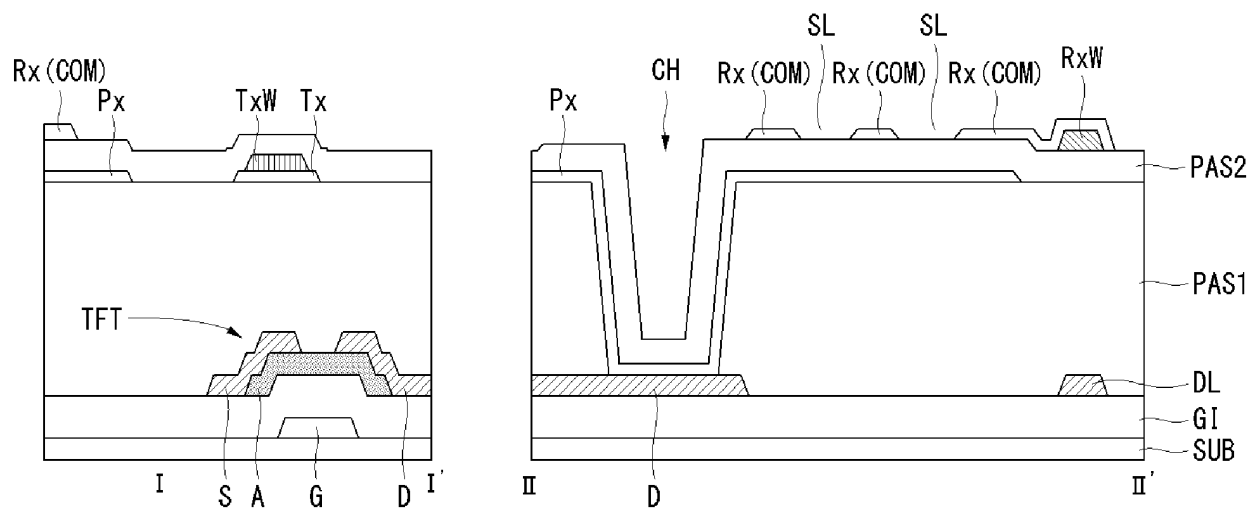


FIG. 17A

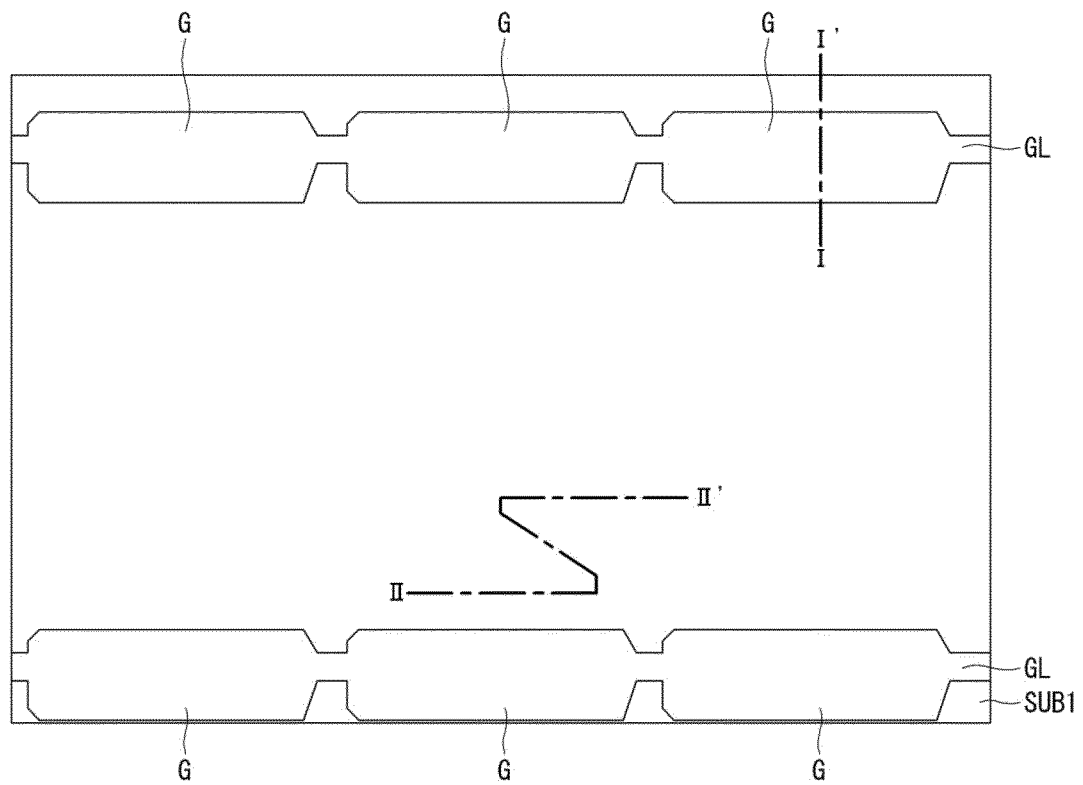


FIG. 17B



FIG. 18A

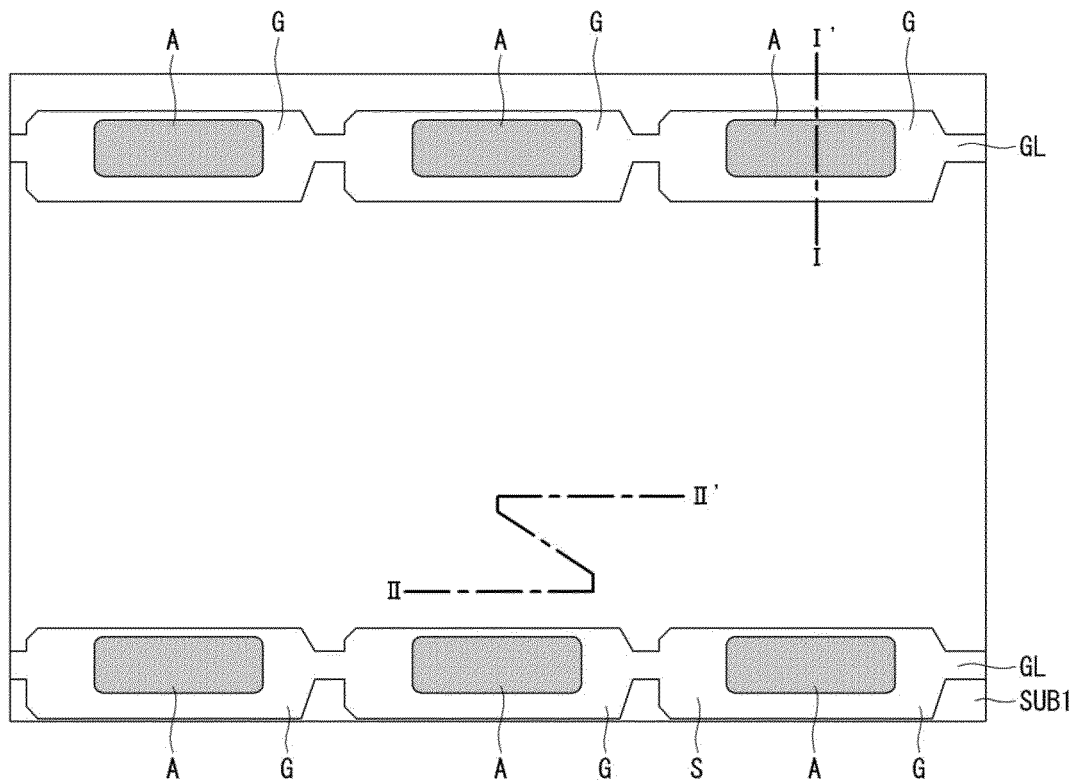


FIG. 18B

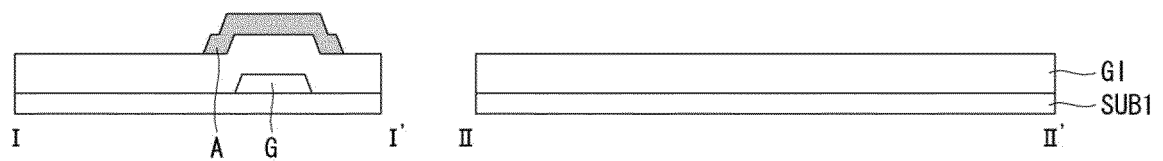


FIG. 19A

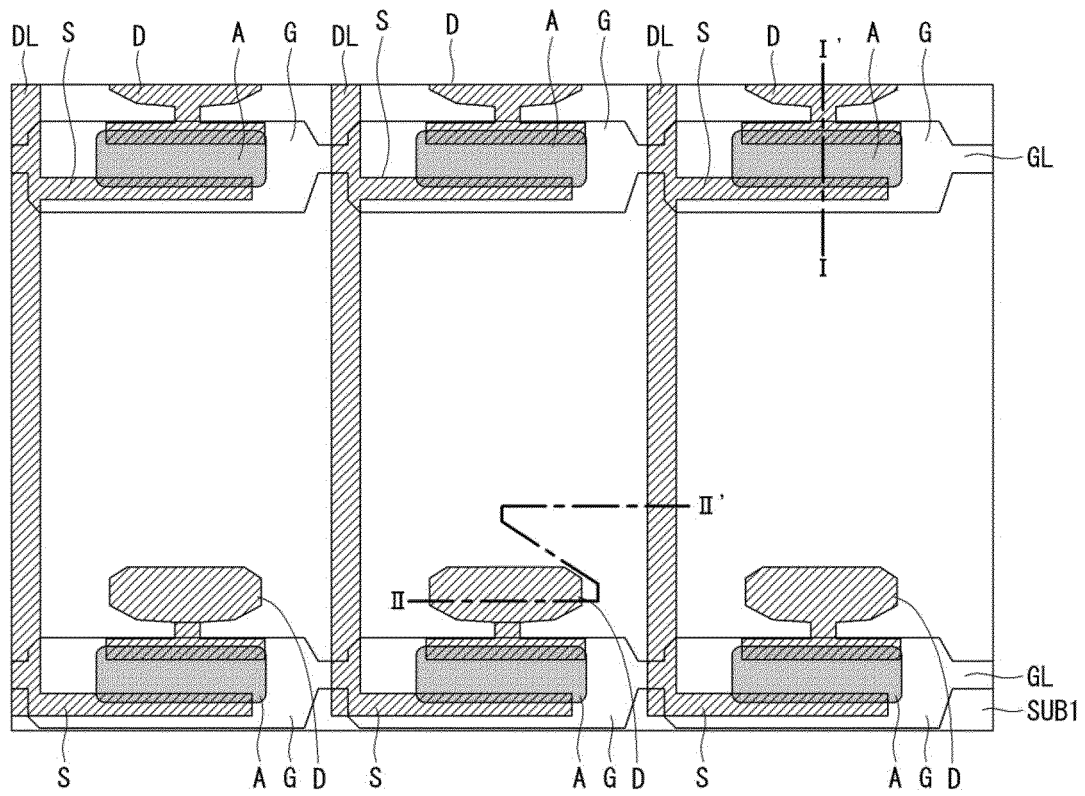


FIG. 19B

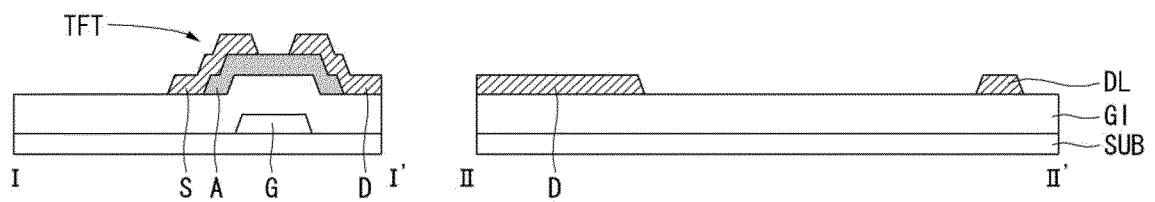


FIG. 20A

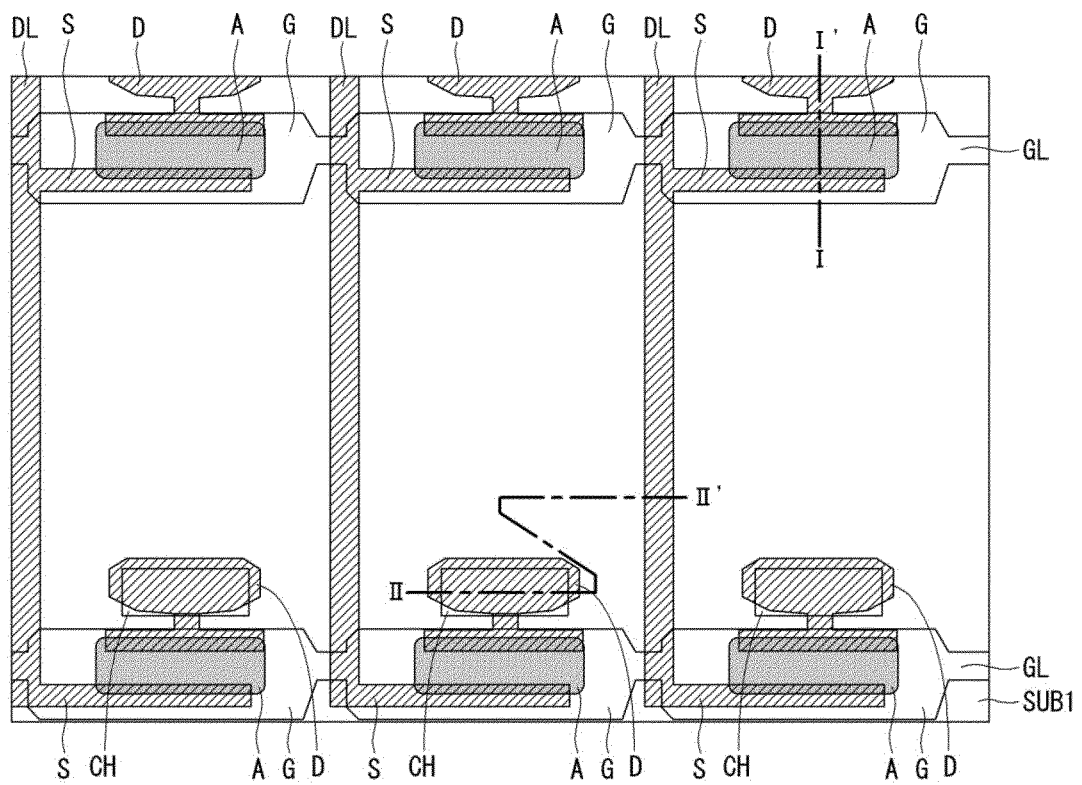


FIG. 20B

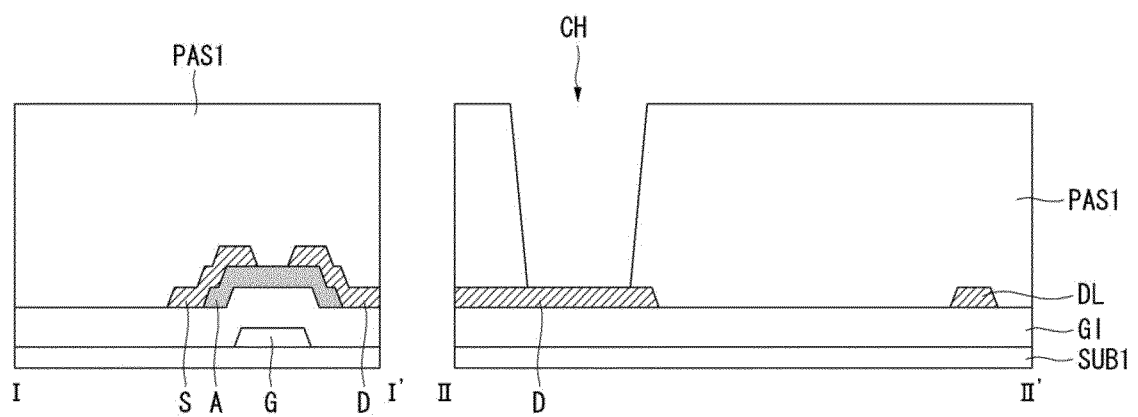


FIG. 21A

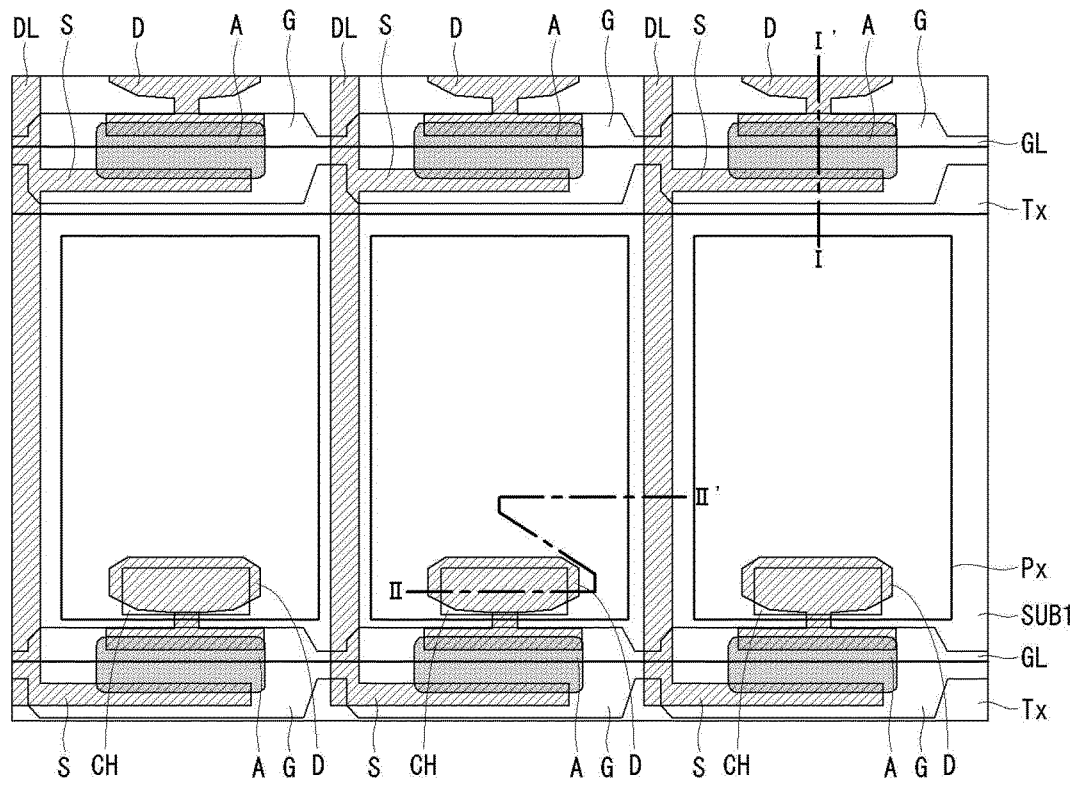


FIG. 21B

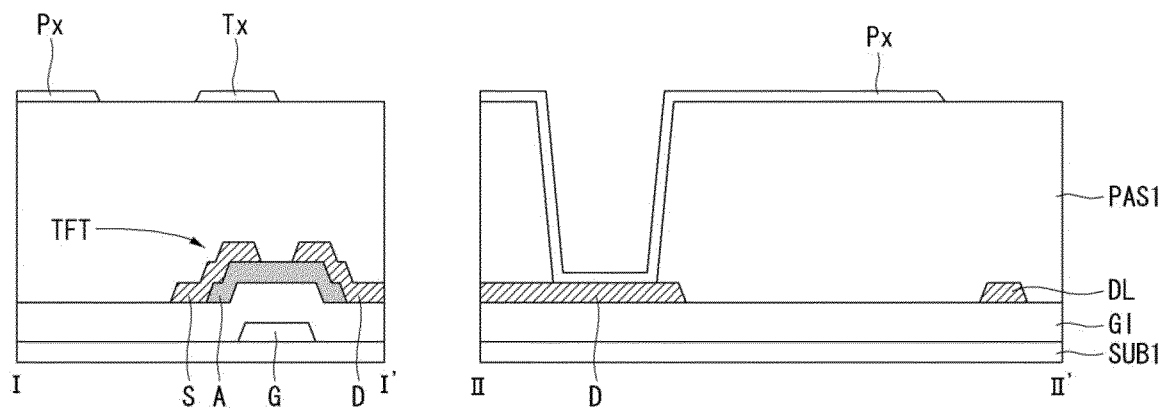


FIG. 22A

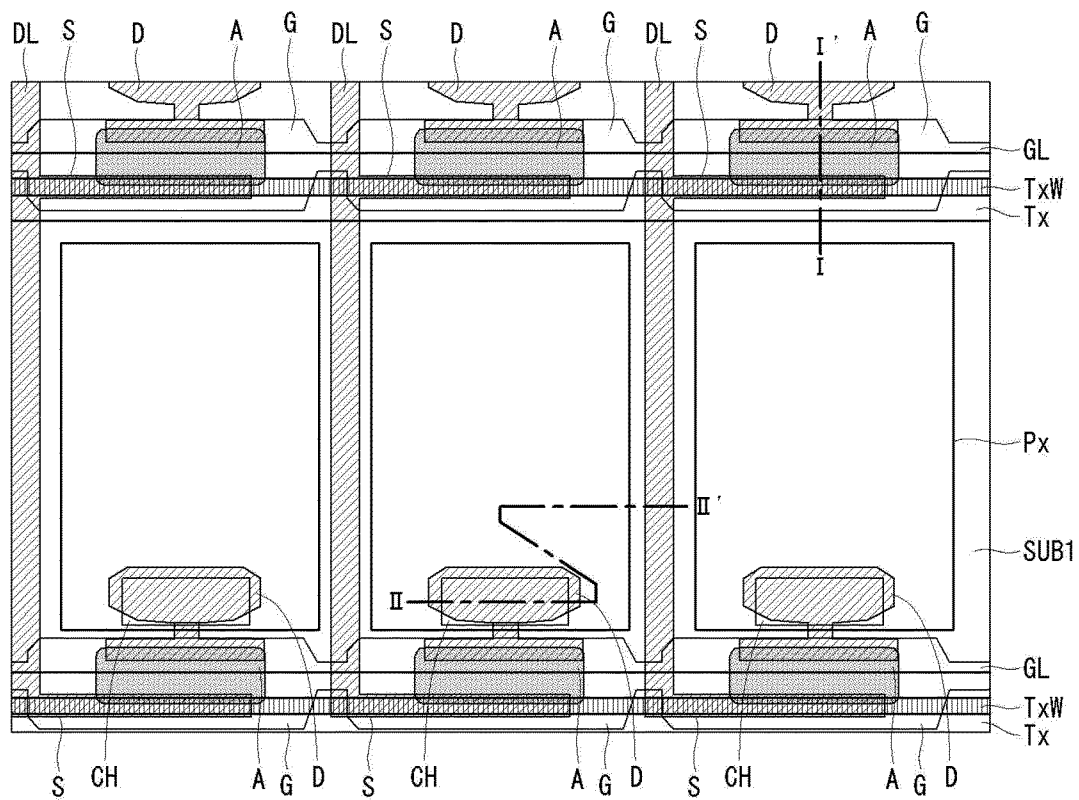


FIG. 22B

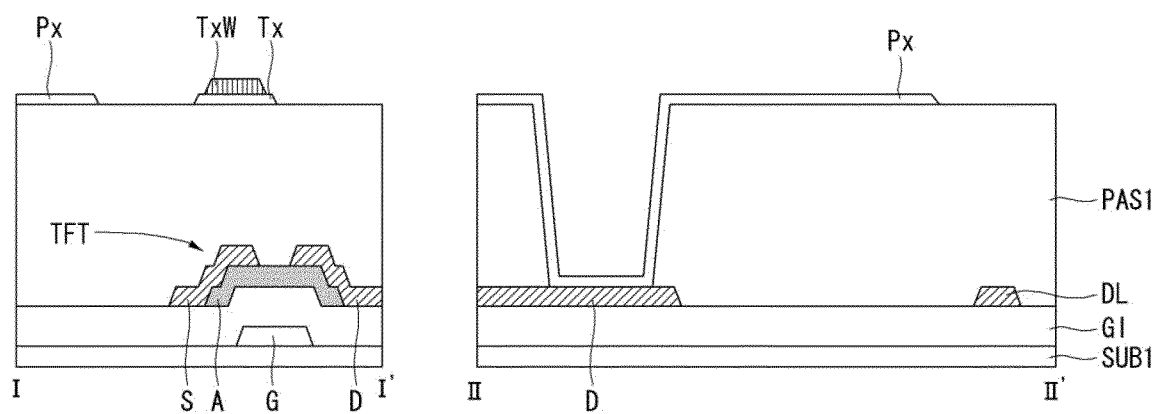


FIG. 23A

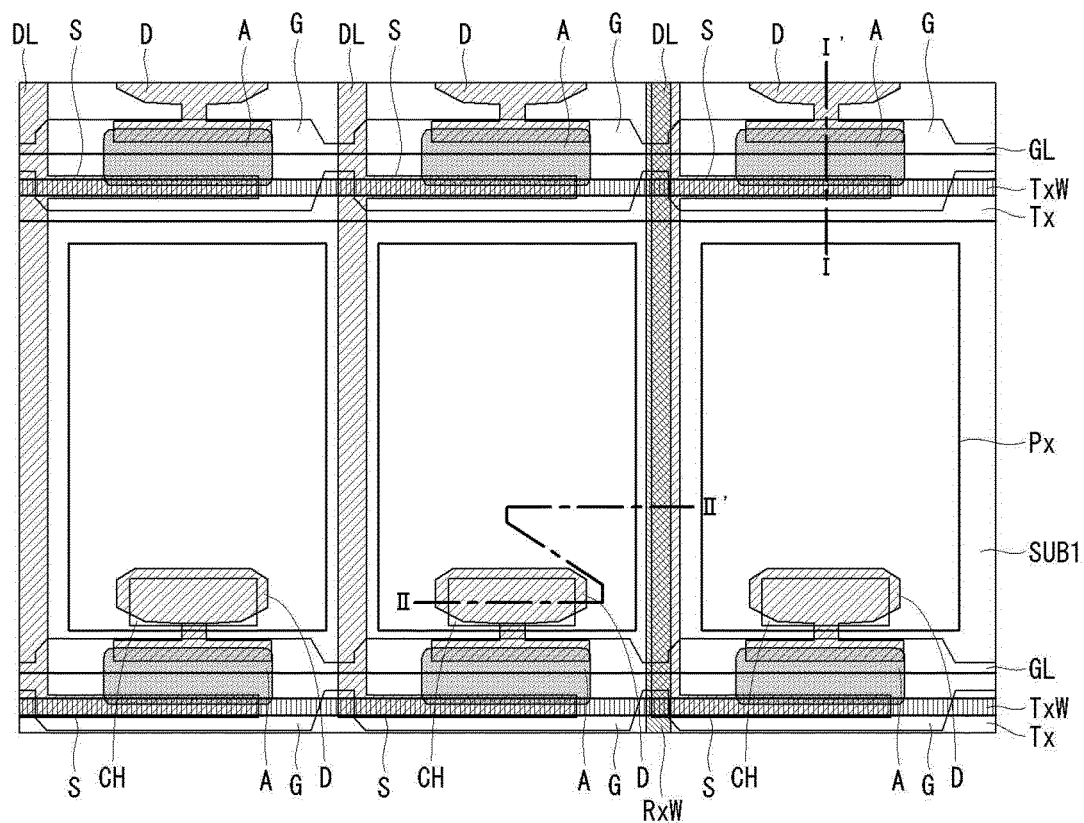


FIG. 23B

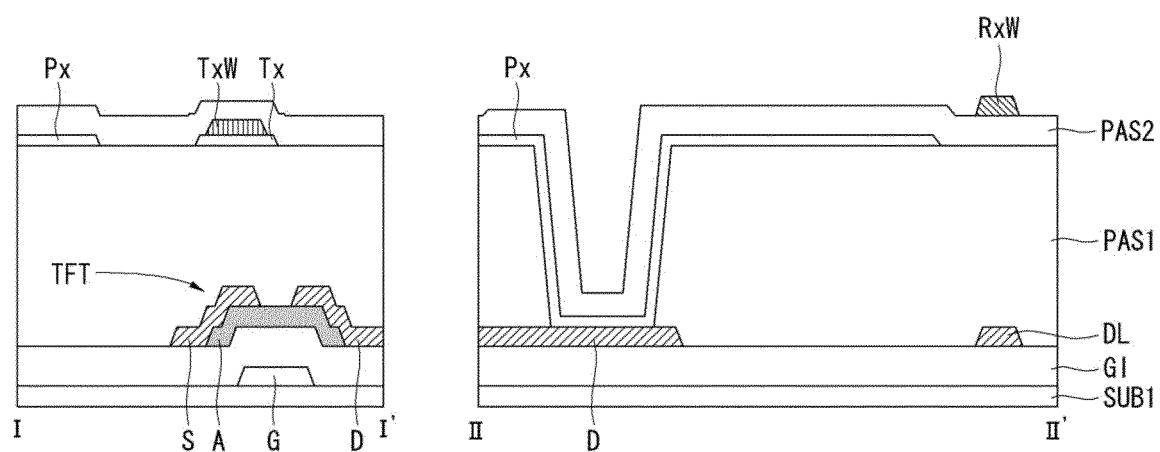


FIG. 24A

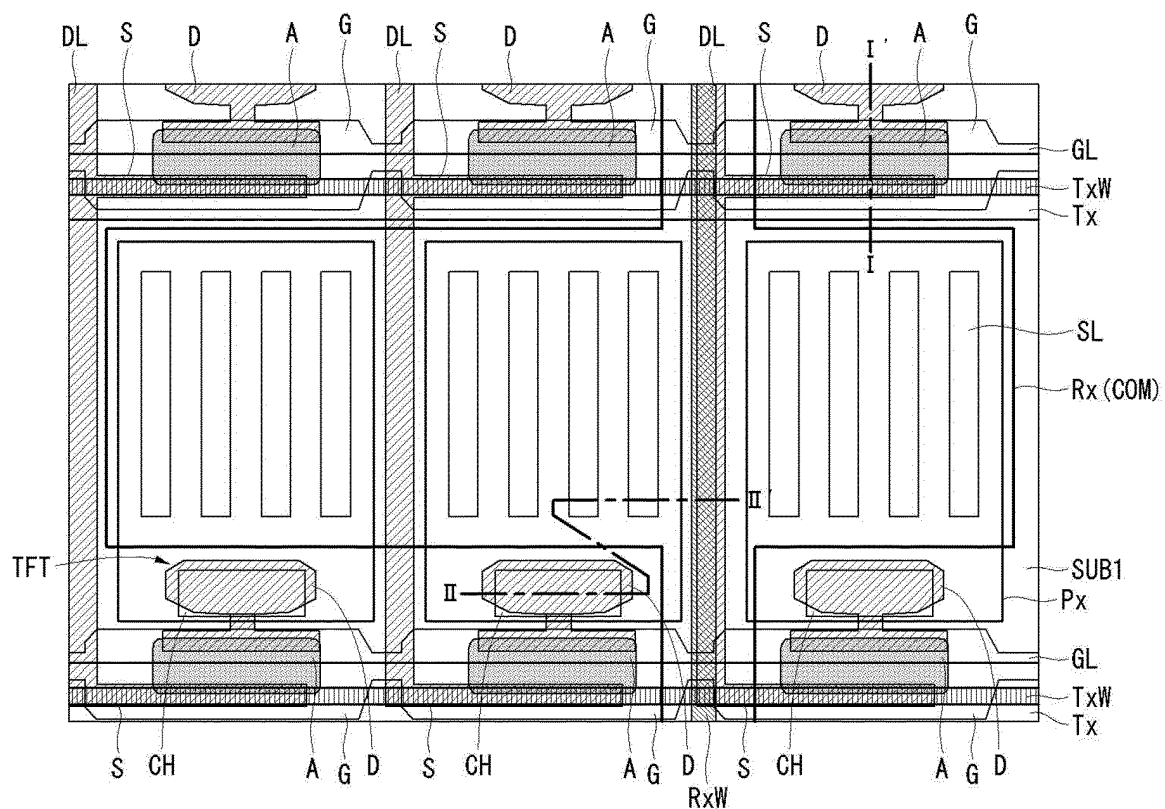
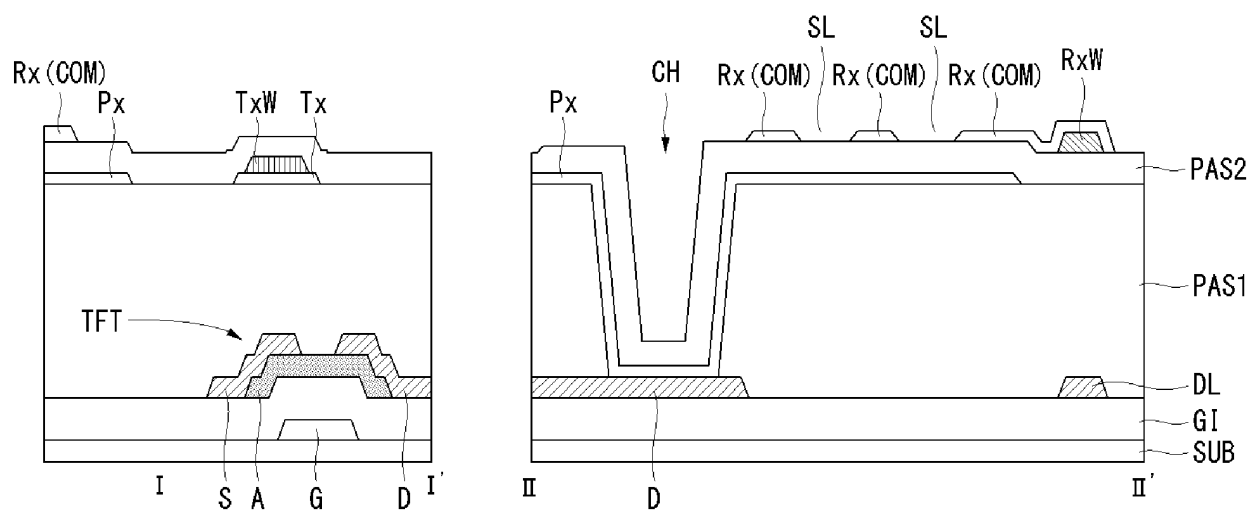


FIG. 24B



REFERENCES CITED IN THE DESCRIPTION

This list of references cited by the applicant is for the reader's convenience only. It does not form part of the European patent document. Even though great care has been taken in compiling the references, errors or omissions cannot be excluded and the EPO disclaims all liability in this regard.

Patent documents cited in the description

- WO 2012118038 A1 [0008]
- US 2013342801 A1 [0008]
- US 2011157039 A1 [0009]
- EP 2431846 A1 [0010]

专利名称(译)	触摸传感器集成型显示装置及其制造方法		
公开(公告)号	EP2743752B1	公开(公告)日	2017-05-17
申请号	EP2013182182	申请日	2013-08-29
[标]申请(专利权)人(译)	乐金显示有限公司		
申请(专利权)人(译)	LG DISPLAY CO. , LTD.		
当前申请(专利权)人(译)	LG DISPLAY CO. , LTD.		
[标]发明人	KIM CHEOLSE KIM JUHAN KIM HOONBAE HAN SUNGSU KIM JINSEONG HAN MANHYEOP		
发明人	KIM, CHEOLSE KIM, JUHAN KIM, HOONBAE HAN, SUNGSU KIM, JINSEONG HAN, MANHYEOP		
IPC分类号	G02F1/1333 G06F3/044 G02F1/1343 G02F1/1362		
CPC分类号	G02F1/13338 G02F2001/134372 G02F2001/13629 G06F3/0412 G06F3/0445 G06F3/0446 G06F2203/04103 G06F3/044 H01B5/14 H01B13/00		
优先权	1020120143228 2012-12-11 KR		
其他公开文献	EP2743752A1		
外部链接	Espacenet		

摘要(译)

本发明涉及一种触摸传感器集成型显示装置。显示装置是边缘场切换(FFS)液晶显示器,并且包括多条栅极线,跨越多条栅极线的多条数据线,形成在通过栅极交叉限定的区域中的多个像素电极线和数据线,形成在彼此相邻的像素电极之间的多个第一电极,其间具有栅极线,多个第二电极,每个第二电极形成为与像素电极的至少一部分重叠并且与栅极线平行布置,其中第一和第二电极中的一个用作用于驱动显示装置的公共电极。

FIG. 1

