



(12) **EUROPEAN PATENT APPLICATION**

(43) Date of publication:
25.06.2014 Bulletin 2014/26

(51) Int Cl.:
G02F 1/1333 ^(2006.01) **G02F 1/1343** ^(2006.01)
G06F 3/041 ^(2006.01) **G06F 3/044** ^(2006.01)
G02F 1/139 ^(2006.01)

(21) Application number: **13193968.8**

(22) Date of filing: **22.11.2013**

(84) Designated Contracting States:
AL AT BE BG CH CY CZ DE DK EE ES FI FR GB GR HR HU IE IS IT LI LT LU LV MC MK MT NL NO PL PT RO RS SE SI SK SM TR
Designated Extension States:
BA ME

(72) Inventors:
• **Ma, Jun**
201201 Shanghai (CN)
• **Zhao, Lijun**
201201 Shanghai (CN)

(30) Priority: **24.12.2012 CN 201210567635**

(74) Representative: **Maiwald Patentanwalts GmbH**
Elisenhof
Elisenstrasse 3
80335 München (DE)

(71) Applicant: **Shanghai Tianma Micro-electronics Co., Ltd.**
Pudong New District
Shanghai 201201 (CN)

(54) **TN liquid crystal display device and touch control method thereof**

(57) A twisted nematic liquid crystal display device integrated with a touch control function is disclosed. The device includes an array substrate (109), a color film substrate (101) disposed opposite the array substrate, and a liquid crystal layer (103) disposed between the array substrate and the color film substrate. The device also includes a common electrode layer (102) disposed on a surface of the color film substrate facing the liquid crystal

layer. The common electrode layer includes a plurality of sensing electrodes (1022), a plurality of driving electrodes (1021), and a plurality of dummy electrodes (1023) located between the sensing electrodes and the driving electrodes. In addition, the sensing electrodes, the driving electrodes, and the dummy electrodes are insulated from one another.

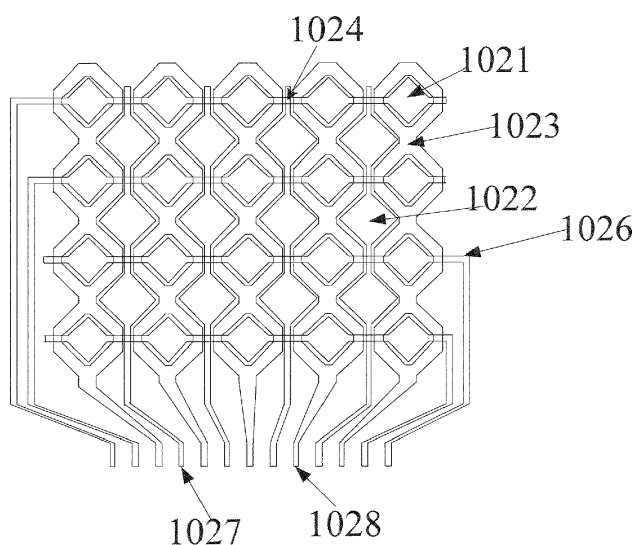


Figure 2

Description

CROSS REFERENCE TO RELATED APPLICATION

FIELD OF THE INVENTION

[0001] The invention relates to liquid crystal display (LCD) technology, and in particular to a TN (twisted nematic) LCD device and a touch control method thereof.

BACKGROUND OF THE INVENTION

[0002] With the development of the liquid crystal display (LCD) technology, touch panels, as the most simple, convenient and natural way of human-machine interaction, are increasingly applied to the field of LCD.

[0003] Depending on differences of the operational principle and media for transmitting information, the touch panels may be classified into four types: resistive touch panels, capacitive touch panels, infrared touch panels and surface acoustic wave touch panels. The capacitive touch panel technology is popular due to the simple process, long service life and high transmittance.

[0004] In the existing TN (twisted nematic) LCD device integrated with the touch control function, a touch panel is directly disposed on a TN LCD panel. Each of the LCD panel and the touch panel includes two substrates which are generally glass substrates. That is, the existing TN LCD device with the touch control function requires at least four glass substrates to be jointed together. In view of the requirements for thinner, more convenient display device at the right now and in the future, the TN LCD device with the touch control function mentioned above is inadequate considering its complex structure, great thickness, complex manufacturing process and high manufacturing costs, therefore, it may be needful to reduce the manufacturing costs, simplify the manufacturing process and provide a lighter, thinner, more convenient display device with simple structure.

SUMMARY OF THE INVENTION

[0005] In view of the mentioned above, the present invention provides a TN LCD device integrated with a touch control function and a touch control method thereof.

[0006] In order to achieve the object mentioned above, the following technical solutions are provided according to embodiments of the present invention.

[0007] One inventive aspect is a twisted nematic liquid crystal display device integrated with a touch control function. The device includes an array substrate, a color film substrate disposed opposite the array substrate, and a liquid crystal layer disposed between the array substrate and the color film substrate. The device also includes a common electrode layer disposed on a surface of the color film substrate facing the liquid crystal layer. The common electrode layer includes a plurality of sensing electrodes, a plurality of driving electrodes, and a

plurality of dummy electrodes located between the sensing electrodes and the driving electrodes. In addition, the sensing electrodes, the driving electrodes, and the dummy electrodes are insulated from one another..

[0008] Preferably, the TN LCD device may further include a black matrix layer located between the color film substrate and the common electrode layer, wherein the sensing electrodes, the driving electrodes and the dummy electrodes are isolated and insulated from each other by gaps in the common electrode layer, and the gaps are covered by the black matrix layer.

[0009] Preferably, the driving electrodes located in a same row are connected to one another through a first wiring to form a driving line, and the sensing electrodes in a particular column are connected to one another through a second wiring to form a sensing line; or the driving electrodes in a particular column are connected to one another through a first wiring to form a driving line, and the sensing electrodes in a particular row are connected to one another through a second wiring to form a sensing line.

[0010] Preferably, the common electrode layer and the first wiring for electrically connecting the driving electrodes to one another are on a particular conductive layer, and the second line for electrically connecting the sensing electrodes is a conductive bridging which is on a different conductive layer from the common electrode layer; or the common electrode layer and the second wiring for electrically connecting the sensing electrodes to one another are on a particular conductive layer, and the first wiring for electrically connecting the driving electrodes to one another is a conductive bridging which is on a different conductive layer from the common electrode layer.

[0011] Preferably, all the dummy electrodes are electrically connected to one another.

[0012] Preferably, the plurality of driving electrodes are square electrodes arranged in an array, strip-shaped sensing electrodes are disposed between every two adjacent columns of driving electrodes, and the dummy electrodes are disposed between the driving electrode and sensing electrode adjacent to the driving electrode, each of the dummy electrodes is in an H shape and the H-shaped dummy electrodes in each row being connected to one another; or the plurality of sensing electrodes are square electrodes arranged in an array, strip-shaped driving electrodes are disposed between every two adjacent columns of sensing electrodes, and the dummy electrodes are disposed between the sensing electrode and the driving electrode adjacent to the driving electrode, each of the dummy electrodes is in an H shape and the H-shaped dummy electrodes in each row being connected to one another.

[0013] Preferably, the dummy electrodes in a particular row are electrically connected to one another through a third wiring, and the common electrode layer and the third wiring are on a same conductive layer.

[0014] Preferably, the driving electrodes and the sens-

ing electrodes are rhombic and are arranged in an array, the dummy electrode are disposed between the sensing electrode and the driving electrode adjacent to each other, and the dummy electrode is a hollowed-out rhombic electrode having a hollowed-out part in which driving electrode or the sensing electrode is disposed.

[0015] Preferably, the sensing electrodes in a particular column are connected to one another to form a sensing line, and the driving electrodes in a particular row are connected to one another to form a driving line.

[0016] Preferably, the dummy electrodes in a particular row or in a particular column are electrically connected to one another through a conductive bridging which is on a different conductive layer from the common electrode layer.

[0017] Preferably, the TN LCD device may further comprises: a gate electrode layer disposed on a surface of the array substrate facing the liquid crystal layer, wherein the gate electrode layer comprises gate electrodes and scanning lines; a first insulating layer disposed on the gate electrode layer; a silicon island disposed on the first insulating layer; a source/drain electrode layer disposed on the silicon island, wherein the source/drain electrode layer comprises source electrodes, drain electrodes and data lines, and the gate electrode within the gate electrode layer, the first insulating layer, the silicon island, the source electrode and the drain electrode collectively form a thin film transistor structure; a second insulating layer disposed on the source/drain electrode layer; a pixel electrode layer disposed on the second insulating layer; and a third insulating layer disposed between the second insulating layer and the pixel electrode layer.

[0018] Preferably, the third insulating layer is an organic film layer.

[0019] Preferably, the thickness of the third insulating layer ranges from $1\mu\text{m}$ to $10\mu\text{m}$.

[0020] Preferably, the TN LCD device may further include a first transparent electrode layer disposed between the first insulating layer and the gate electrode layer, wherein the first transparent electrode layer covers the scanning lines of the gate electrode layer and does not cover an area of the gate electrodes at the gate electrode layer; and a fourth insulating layer disposed between the first transparent electrode layer and the gate electrode layer.

[0021] Preferably, the TN LCD device may further include a first transparent electrode layer disposed between the second insulating layer and the third insulating layer, wherein the first transparent electrode layer covers the data lines and the scanning lines, but does not cover an area of the thin film transistors.

[0022] Preferably, the first transparent electrode layer is disposed opposite to the common electrode layer, and plan views of the areas of the first transparent electrode layer and the common electrode layer which are opposite to each other are the same except for the area of the thin film transistors.

[0023] Preferably, the dummy electrode block of the

first transparent electrode layer is connected to the sensing electrode block located in the hollowed-out part of the dummy electrode block.

[0024] Another inventive aspect is a method of controlling a twisted nematic liquid crystal display device, for performing detection of touch signal. The method includes dividing a time-sharing period during display into a first duration and a second duration, where during the time-sharing period, the common electrode layer is configured to detect a touch signal and to provide a common electrode signal. The second duration is shorter than a retention time of liquid crystal molecules and is longer than or equal to a scanning time for one detection of the touch signal by the common electrode layer. In addition, the retention time of liquid crystal molecules is a time period during which the liquid crystal molecules maintain a previous state when a driving voltage of the common electrode layer changes. The method also includes, during the first duration, applying a same common potential to a plurality of sensing electrodes, to a plurality of driving electrodes, and to a plurality of dummy electrodes of the common electrode layer to achieve normal display. The method also includes, during the second duration, grounding the dummy electrodes and applying a driving voltage for touch detection to the sensing electrodes and to the driving electrodes of the common electrode layer..

[0025] Preferably, during the first duration of the time-sharing period, the first transparent electrode layer is grounded, wherein during the second duration, the parts of the first transparent electrode layer opposite to the driving electrodes and the corresponding driving electrodes are applied a same signal, and the parts of the first transparent electrode layer opposite to the sensing electrodes and the dummy electrodes are grounded.

[0026] Preferably, the duration of the time-sharing period is equal to the duration of a scanning period of the LCD device.

[0027] Preferably, the duration of the first duration is greater than half of the duration of the time-sharing period and the second duration is less than half of the duration of the time-sharing period.

[0028] Preferably, the duration of the second duration is less than 8ms.

[0029] Preferably, the duration of the second duration is equal to 3ms.

[0030] Compared to the prior art, the solutions according to the embodiment of the present invention may have at least one of the following advantages.

[0031] The TN LCD device of the present invention comprises the common electrode layer on a surface of the color film substrate facing the liquid crystal layer, and the common electrode layer comprises a plurality of sensing electrodes, driving electrodes and dummy electrodes for performing functions of touch control. As compared to the existing TN LCD device integrated with the touch control function, two glass substrates in the touch panel of the existing TN LCD device may be saved. That is, the TN LCD device of the present invention is lighter

and thinner, the thickness and manufacturing costs of the whole device are reduced, and the manufacturing process is simplified.

[0032] The control method of a TN LCD device according to the present invention is performed by the TN LCD device. During the display, a common voltage and a driving voltage of touch detecting are sequentially applied to corresponding electrodes in the common electrode layer in one time-sharing period, to achieve normal display and touch detection. Furthermore, it is guaranteed that the duration for the touch driving process is shorter than the retention time of liquid crystal molecules and longer than or equal to the scanning time for one detection of touch signal performed by the common electrode layer, so as to maintain normal display during the touch detection, namely, the touch detection is achieved during normal display.

BRIEF DESCRIPTION OF THE DRAWINGS

[0033] Figure 1 is a schematic sectional diagram of a TN LCD device according to a first embodiment of the present invention;

[0034] Figure 2 is a plan view of a common electrode layer according to the first embodiment of the present invention;

[0035] Figure 3 is a plan view of a common electrode layer according to a second embodiment of the present invention;

[0036] Figure 4 is a schematic diagram showing a certain principle of touch detection in a capacitive touch panel;

[0037] Figure 5 is a schematic diagram showing another principle of touch detection in a capacitive touch panel;

[0038] Figure 6 is a schematic sectional diagram of a TN LCD device according to a third embodiment of the present invention;

[0039] Figure 7 is a schematic sectional diagram of a TN LCD device according to a fourth embodiment of the present invention;

[0040] Figure 8 is a schematic plan view of a first transparent electrode layer according to the fourth embodiment of the present invention;

[0041] Figure 9 is a schematic diagram showing the control means for electrodes of a TN LCD device according to a fifth embodiment of the present invention; and

[0042] Figure 10 is a schematic diagram showing the control means for driving electrodes and sensing electrodes on a common electrode layer of a TN LCD device according to the fifth embodiment of the present invention.

DETAILED DESCRIPTION OF THE INVENTION

[0043] In order to make objects, technical solutions and advantages of embodiments of the present invention to be clearer, in the following the technical solutions accord-

ing to the embodiments of the present invention will be clearly and fully described in conjunction with the drawings. Apparently, the embodiments to be described are only some of the embodiments of the present invention but not all the embodiments of the present invention. Any other embodiments obtained by the skilled in the art based on the embodiments of the present invention without inventive works fall within the protective scope of the present invention.

[0044] As described in the background of the present invention, the existing TN LCD device integrated with a touch control function requires at least four glass substrates, causing a greater thickness and a higher manufacturing cost of the TN LCD device.

[0045] In view of this, a TN LCD device is provided according to an embodiment of the present invention. The TN LCD device includes: an array substrate, a color film substrate disposed opposite to the array substrate, and a liquid crystal layer disposed between the array substrate and the color film substrate; a common electrode layer disposed on a surface of the color film substrate facing the liquid crystal layer, wherein the common electrode layer includes a plurality of sensing electrodes, a plurality of driving electrodes and a plurality of dummy electrodes located between the sensing electrodes and the driving electrodes, and the sensing electrodes, the driving electrodes and the dummy electrodes are insulated from each other.

[0046] In this embodiment, since the common electrode layer comprises a plurality of sensing electrodes, a plurality of driving electrodes and a plurality of dummy electrodes, the common electrode layer can perform functions of touch control. Therefore, a touch panel is saved, which allows the TN LCD device integrated with the touch control function to be lighter and thinner.

[0047] A control method of the TN LCD device for performing detection of touch signal during normal display, includes: dividing a time-sharing period during normal display into a first duration and a second duration. The time-sharing period refers to a period in which the common electrode layer performs detection of touch signal and provides common electrode signal. The second duration is shorter than the retention time of liquid crystal molecules and longer than or equal to the scanning time for one detection of touch signal performed by the common electrode layer. The retention time of liquid crystal molecules refers to the time duration in which the liquid crystal molecules maintain the previous state when a driving voltage applied to the common electrode layer changes. During the first duration, the sensing electrodes, driving electrodes and dummy electrodes of the common electrode layer are applied a same common potential to achieve normal display. During the second duration, a driving voltage of touch detecting is applied to the sensing electrodes and the driving electrodes of the common electrode layer and the dummy electrodes are grounded for the detection of touch signal.

[0048] According to the method, a common voltage

and a driving voltage of touch detecting are sequentially applied to corresponding electrodes in the common electrode layer to achieve normal display and touch detection. Furthermore, it is guaranteed that the duration for the touch driving process is shorter than the retention time of liquid crystal molecules and longer than or equal to the scanning time for one detection of touch signal performed by the common electrode layer, so the normal display is maintained during the touch detection, namely, the touch detection is achieved during normal display.

[0049] The core ideas of the present invention are described above. In the following, the technical solutions according to embodiments of the present invention will be clearly, fully described in conjunction with the drawings. Apparently, the described embodiments are only some of but not all the embodiments of the present invention. Any other embodiments obtained by the skilled in the art based on the embodiments of the present invention without an inventive work may fall within the protective scope of the present invention.

[0050] First embodiment

[0051] A TN (twisted nematic) LCD device is disclosed according to the first embodiment of the present invention. As shown in the sectional view in Figure 1, the LCD device includes:

[0052] an array substrate 109, a color film substrate 101 disposed opposite to the array substrate 109, and a liquid crystal layer 103 disposed between the array substrate 109 and the color film substrate 101; wherein the array substrate and the color film substrate are generally glass substrates;

[0053] a gate electrode layer disposed on a surface of the array substrate 109 facing the liquid crystal layer 103, where the gate electrode layer includes gate electrodes 111 and scanning lines (not shown), the scanning lines and the gate electrodes 111 are formed on a same conductive layer and electrically connected to each other, the scanning line is used to switch on/off of a thin film transistor (TFT), and the gate electrode layer may be made of a metal or a transparent conductive material such as indium tin oxide;

[0054] a first insulating layer 107 disposed on the gate electrode layer, wherein the first insulating layer 107 is made of at least one of silicon nitride, silicon oxide and silicon oxynitride, and preferably is made of silicon nitride in this embodiment;

[0055] a silicon island disposed on the first insulating layer 107, wherein the silicon island includes a amorphous silicon layer 112 and a heavily doped amorphous silicon layer 113 both are located above the first insulating layer 107, and preferably the heavily doped amorphous silicon layer 113 is a N-type heavily doped amorphous silicon layer;

[0056] a source/drain electrode layer 114 disposed on the silicon island, wherein the source/drain electrode layer 114 includes source electrodes, drain electrodes and data lines, and the gate electrode within the gate electrode layer, the first insulating layer, the silicon island,

the source electrode and the drain electrode form a TFT structure collectively;

[0057] a second insulating layer 106 disposed on the source/drain electrode layer 114 for isolating the source/drain electrode layer 114 from a pixel electrode layer;

[0058] the pixel electrode layer 104 disposed on the second insulating layer 106, wherein the pixel electrode layer 104 is a transparent conductive layer, which is made of indium tin oxide (ITO), indium zinc oxide (IZO) or the combination of ITO and IZO; the source electrode of the TFT is connected to the data line and the drain electrode of the TFT is connected to the pixel electrode to control the display of the pixel electrode; and

[0059] a common electrode layer 102 disposed on a surface of the color film substrate 101 facing the liquid crystal layer, wherein the common electrode layer 102 includes a plurality of sensing electrodes, a plurality of driving electrodes and a plurality of dummy electrodes located between the sensing electrodes and the driving electrodes, the sensing electrodes, the driving electrodes and the dummy electrodes are insulated from each other.

[0060] According to this embodiment, the common electrode layer 102 may be preferably a transparent conductive layer, and be made of ITO, IZO or the combination of ITO and IZO.

[0061] The plan view of the common electrode layer 102 according to this embodiment is shown in Figure 2. The driving electrodes 1021 and the sensing electrodes 1022 are rhombic electrodes arranged in an array. A dummy electrode 1023 is disposed between a driving electrode 1021 and a sensing electrode 1022 which are adjacent to each other. The dummy electrode 1023 is a hollowed-out rhombic electrode having a hollowed-out part in which a driving electrode 1021 or a sensing electrode 1022 is disposed. Specifically, taking the first right column in Figure 2 as an example, driving electrodes 1021 are disposed in the hollowed-out parts of the dummy electrodes 1023; and taking the second right column in Figure 2 as an example, sensing electrode 1022 are disposed in the hollowed-out parts of the dummy electrodes 1023.

[0062] The driving electrode 1021, the sensing electrode 1022 and the dummy electrode 1023 are isolated and insulated from each other by gaps between any two of them. In this embodiment, the gaps are preferably overlapped with a black matrix layer on the color film substrate in order to further improve the aperture ratio of the LCD device. That is, the black matrix layer, located between the color film substrate and the common electrode layer, may cover the gaps.

[0063] According to the embodiment, a plurality of driving electrodes 1021 in a same row are connected to one another through a first wiring to form a driving line 1026, and a plurality of sensing electrodes 1022 in a same column are connected to one another through a second wiring to form a sensing line 1027. Since the first wiring is inevitably intersected with the second wiring, one of the

first wiring and the second wiring must connect to the corresponding electrodes in a form of a conductive bridging in order to guarantee that the first wiring and the second wiring are insulated from each other.

[0064] Specifically, the plurality of driving electrodes 1021 are connected in such a way that the common electrode layer 102 and the first wirings for electrically connecting the driving electrodes to one another are on a same conductive layer, and meanwhile the plurality of sensing electrodes 1022 are connected in such a way that the second wirings for electrically connecting the sensing electrodes 1022 are conductive bridgings 1024 which are on a different conductive layer from the common electrode layer 102. Alternatively, the plurality of sensing electrodes 1022 are connected in such a way that the common electrode layer 102 and the second wirings for electrically connecting the sensing electrodes 1022 to one another are on a same conductive layer, and meanwhile the plurality of driving electrodes 1021 are connected in such a way that the first wirings for electrically connecting the driving electrodes 1021 are conductive bridgings 1024 which are on a different conductive layer from the common electrode layer.

[0065] To facilitate the applying of a same potential to all the electrodes of the common electrode layer simultaneously for implementing normal display, in the embodiment, all the dummy electrodes 1023 are electrically connected to one another. For the connection of a column of dummy electrodes perpendicular to the driving line 1026, the dummy electrodes at the intersection with the driving line 1026 need to be electrically connected to the conductive bridging which is on a different conductive layer from the common electrode layer 102. For the connection of a row of dummy electrodes perpendicular to the sensing line 1027, the dummy electrodes at the intersection with the sensing line 1027 need to be electrically connected to the conductive bridging which is on a different conductive layer from the common electrode layer 102.

[0066] In other words, the dummy electrodes in a same row or a same column are electrically connected to one another via a third wiring to form a dummy electrode line 1028, and the third wiring is a conductive bridging on a different conductive layer from the common electrode layer 102. Thereafter, all the dummy electrode lines 1028 are applied a same potential or all the dummy electrode lines 1028 are extended through a same electrode lead, so that all the dummy electrodes 1023 are electrically connected together.

[0067] It is to be understood by those skilled in the art that the arrangement of the driving electrodes and the sensing electrodes may be interchangeable. In the embodiment, explanation is made by taking the case that the driving lines are arranged in the horizontal direction and the sensing lines are arranged in the vertical direction as an example. In other embodiments, the driving lines may be arranged in the vertical direction and the sensing lines may be arranged in the horizontal direction. That

is, driving electrodes 1021 in a same column are connected to one another through the first wiring to form a driving line and sensing electrodes 1022 in a same row are connected to one another through the second wiring to form a sensing line.

[0068] Second embodiment

[0069] Different from the structure of the common electrode layer of the TN LCD device disclosed in the above embodiment, the plan view of the common electrode layer 102 of the TN LCD device according to the second embodiment of the present invention is shown in Figure 3. A plurality of driving electrodes 21 are square electrodes arranged in an array, and strip-shaped sensing electrodes 22 are disposed between every two adjacent columns of driving electrodes. A dummy electrode 23 is disposed between a driving electrode 21 and a sensing electrode 22 adjacent to each other. Each of the dummy electrodes 23 is in a H shape and the H-shaped dummy electrodes in each row are connected to one another.

[0070] Similar to the first embodiment, driving electrodes 21 in a same row are connected to one another through a first wiring to form a driving line 26, strip-shaped sensing electrodes 22 in a same column are connected to one another through a second wiring to form a sensing line 27 and dummy electrodes 23 in a same row are connected to one another through a third wiring to form a dummy electrode line 28. Furthermore, in this embodiment, all the dummy electrodes 23 are electrically connected to one another. As shown in Figure 3, dummy electrode lines 28 in different rows are extended through a same electrode lead in order to apply a same voltage to all the dummy electrodes simultaneously.

[0071] Since the first wiring is intersected with the second wiring, one of them is located on a same conductive layer as the common electrode layer 102 and the other is inevitably a conductive bridging which is on a different conductive layer from the common electrode layer 102. That is, the intersection 24 of the first wiring with the second wiring is inevitably configured in a conductive bridging structure. Similarly, since the second wiring is intersected with the third wiring, one of them is on a same conductive layer as the common electrode layer 102 and the other is inevitably a conductive bridging on a different conductive layer from the common electrode layer 102.

[0072] Due to a smaller width of the intersection 25 of the H-shaped dummy electrode 23 and the strip-shaped sensing electrode 22, the third wiring is preferably on a same conductive layer as the common electrode layer 102, that is, the strip-shaped sensing electrodes 22 are electrically connected to one another through conductive bridgings, to reduce the complexity of forming through-holes for bridgings.

[0073] Of course, the shape of the driving electrode may be exchanged with the shape of the sensing electrode. In other words, the plurality of driving electrodes are square electrodes arranged in an array, strip-shaped sensing electrodes are disposed between every two adjacent columns of driving electrodes, and the dummy

electrode is disposed between the driving electrode and the sensing electrode adjacent to each other. Each of the dummy electrodes is in a H shape and the H-shaped dummy electrodes in each row are connected to one another. Furthermore, the arrangement of the driving electrodes may be exchanged with the arrangement of the sensing electrodes, that is, driving electrodes in a same column are connected to one another through the first wiring to form a driving line and sensing electrodes in a same row are connected to one another through the second wiring to form a sensing line.

[0074] In the above embodiment, the common electrode layer 102 on the color film substrate includes a plurality of sensing electrodes, a plurality of driving electrodes and a plurality of dummy electrodes, wherein the common electrode layer 102 can perform functions of touch panel. Therefore, the touch panel is saved and the LCD is lighter and thinner as compared to the prior technology.

[0075] It is to be noted that the common electrode layer 102 in this embodiment is further adapted to perform detection of touch signal in addition to normal display. Except for the shapes and structures according to the first embodiment and the second embodiment, other structures may be adopted for the common electrode layer 102, such as the conventional rhombic electrode structure in which no dummy electrode is provided, as long as the most areas of the common electrode layer 102 are conductive while achieving the function of touch detection.

[0076] Third embodiment

[0077] Based on the TN LCD device disclosed in each of the above two embodiments, the TN LCD device integrated with the touch control function disclosed in this embodiment performs detection of touch signal by the principle of touch detection preferably in a capacitive touch panel. The capacitive touch panel may determine whether a touch occurs and detect the position of the occurring touch through detecting changes in the mutual capacitance between the sensing electrodes and the driving electrodes.

[0078] The principle of touch detection in the capacitive touch panel is shown in Figure 4. A driving signal is applied to the driving electrode by the signal source 41, and a detecting circuit 42 is used for signal detection. When a pointing object (generally a finger) touch the surface of the touch panel, there exists a current flowing into the finger, and ideally only the capacitance value of the mutual capacitor C1 between the sensing electrode and driving electrode is changed, and then the minor change of the current caused by the change of the mutual capacitor C1 is detected by the detecting circuit 42, thus the position where the touch occurs is determined.

[0079] In this embodiment, most areas of the common electrode layer 102 are disposed with conducting electrodes, and when the conducting electrodes are used for touch detection, parasitic capacitors inevitably exist between the common electrode layer 102 with any one of

the pixel electrodes, the data lines, the scanning lines and the lower COM (located on a surface of the array substrate facing the liquid crystal layer, and used to form storage capacitors with the pixel electrodes). The parasitic capacitors formed between the driving electrodes of the common electrode layer 102 and any of the structures listed above are driving parasitic capacitors C2, and the parasitic capacitors formed between the sensing electrodes and any of the structures listed above are sensing parasitic capacitors C3.

[0080] Accordingly, in practical operation, when the signal source 41 sends an AC signal, the AC signal is sent into the detecting circuit 42 through a driving electrode resistor R1, the mutual capacitor C1 and an sensing electrode resistor R2; while the greater driving parasitic capacitor C2 and sensing parasitic capacitor C3 have smaller capacitive reactance with respect to the AC signal sent from the signal source 41, and respective equivalent resistor R3 and inductor of the data line and the scanning line may prevent the AC signal from flowing into the ground; thus the AC signal is allowed to sequentially pass through the driving parasitic capacitor C2 and the sensing parasitic capacitor C3, which form a current channel 43. After the AC signal passes through the current channel 43, a great basal signal (noise signal) is formed at the detecting circuit 42. Furthermore, since the signal corresponding to the change in the capacitance of mutual capacitor C1 is generally minor and tends to be submerged in the greater basal signal, it is difficult to detect the signal corresponding to the change in the capacitance of mutual capacitor C1 by the detecting circuit 42, causing failure in detection and decrease in the sensitivity of the touch control sensitivity of the LCD device.

[0081] In order to improve the sensitivity in touch control of the LCD device, as shown in Figure 6, the LCD device may further include a third insulating layer 105 disposed between the second insulating layer 106 and the pixel electrode layer 104. The third insulating layer 105 may be an organic film, and the thickness J of the organic film may be limited as following: $1\mu\text{m} \leq J \leq 10\mu\text{m}$.

[0082] The presence of the third insulating layer 105 functions to increase the distance between the two plates of the parasitic capacitor, thus the capacitances of the driving parasitic capacitor C2 and the sensing parasitic capacitor C3 are reduced, the capacitance change caused from the presence of the parasitic capacitor when the touch occurs is reduced in turn, and the noise is reduced, resulting in the improvement of sensitivity in touch control of the LCD device.

[0083] Fourth embodiment

[0084] In order to further reduce the effect of the parasitic capacitor on touch detection, as shown in Figure 7, different from the above embodiments, the TN LCD device according to the fourth embodiment further includes: a first transparent electrode layer 108 disposed between the first insulating layer 107 and the gate electrode layer, where the first transparent electrode layer

108 covers the scanning lines of the gate electrode layer but does not cover an area of the gate electrodes at the gate electrode layer, and does not affect the normal operation of the TFTs; a fourth insulating layer 110 disposed between the first transparent electrode layer 108 and the gate electrode layer is used for isolating the gate electrode layer from the first transparent electrode layer 108.

[0085] Preferably, the first transparent electrode layer 108 is partially overlapped with the pixel electrodes to form storage capacitors with the pixel electrodes. That is, the first transparent electrode layer 108 serves as the lower COM of the LCD device and there is no need to additionally form the lower COM.

[0086] It is to be noted that the first transparent electrode layer 108 in this embodiment is arranged opposite to the common electrode layer 102, and plan views of the areas of the first transparent electrode layer 108 and the common electrode layer 102 which are opposite to each other are the same (namely in the area where the first transparent electrode layer 108 does not cover the TFTs), except for the area of the TFTs.

[0087] Taking the common electrode layer 102 disclosed in the first embodiment as an example, the plan view of the first transparent electrode layer 108 according to the fourth embodiment is shown in Figure 8. Each of the dummy electrode blocks 33 in a same row on the first transparent electrode layer 108 is electrically connected to a sensing electrode block 32 in the hollowed-out part of the dummy electrode block 33 through a fourth wiring which is on a same conductive layer as the first transparent electrode layer 108. The dummy electrode blocks 33 and sensing electrode blocks 32 are leaded to a non-display area of the LCD device through second electrode leads 35.

[0088] The driving electrode blocks 31 in a same row on the first transparent electrode layer 108 are electrically connected to one another through a fifth wiring which is on a same conductive layer as the first transparent electrode layer 108, and the driving electrode blocks in respective rows are leaded to the non-display area of the LCD device through first electrode leads 34. That is, it is not necessary to use conductive bridgings for the connecting the electrode blocks to each other on the first transparent layer 108.

[0089] Fifth embodiment

[0090] Taking the TN LCD device disclosed in the fourth embodiment as an example, the control method of the TN-type LCD device is disclosed according to the fifth embodiment. The control method is used to implement touch detection during normal display. The schematic diagram showing the means for performing control of the pixel electrodes, the scanning lines, the data lines, and individual electrodes on the first transparent conductive layer 108 is shown in Figure 9, and the schematic diagram showing the control of the driving electrodes and sensing electrodes of the common electrode layer is shown in Figure 10. In combination of the structure of the mentioned above TN-type LCD device, the method in-

cludes:

[0091] dividing a time-sharing period T during normal display into a first duration t1 and a second duration t2, where the time-sharing period is a period during which the common electrode layer 102 performs detection of touch signal and provides common electrode signal; the first duration t1 is the time duration for normal display and the second duration t2 is the time duration for touch driving.

[0092] It is to be noted that the length of the time-sharing period is not limited, as long as one complete touch detection can be accomplished in one time-sharing period. Generally, the time-sharing period has an equal length as the scanning period of the LCD device, namely the length of the time-sharing period generally equals to the reciprocal of the driving frequency of the LCD device.

[0093] Specifically, the second duration is shorter than the retention time of liquid crystal molecules and longer than or equal to the scanning time for one detection of touch signal performed by the common electrode layer (hereinafter referred to as touch scanning time, namely, the second duration t2), in order to guarantee that at least one touch scan can be performed during the second duration. Therefore, touch detection may be achieved when normal display is maintained.

[0094] It is to be noted that liquid crystal molecules have the characteristics of retention, that is, the inter-electrode capacitor may not disappear at once after the voltage applied to the liquid crystal molecules disappears, and the steering angle of the liquid crystal molecules may not be recovered to the original state and may be maintained until a voltage is applied again to the liquid crystal molecules. The retention time of liquid crystal molecules described in this embodiment is the time period in which the liquid crystal molecules maintain the previous state when the driving voltage applied to the common electrode layer 102 changes. In this embodiment, the first duration t1 is preferably greater than half of the duration of the time-sharing period and the second duration t2 is less than half of the duration of the time-sharing period.

[0095] Moreover, since the retention time t3 of liquid crystal molecules is often constant, generally about 8ms, and the time for one touch scanning of the common electrode layer is about 3ms, accordingly in this embodiment the second duration is preferably less than 8ms and more preferably is 3ms.

[0096] In the first duration, the driving electrodes 1021, sensing electrodes 1022 and dummy electrodes 1023 are applied a same common potential to achieve normal display. At this time, the pixel electrodes, scanning lines and data lines on the array substrate are driven in the normal display mode, and storage capacitors are formed between the first transparent electrode layer 108 and the pixel electrodes. Since the potential of the pixel electrodes during the normal display process is not zero, preferably respective electrodes on the first transparent electrode layer 108 are always grounded;

[0097] It is to be noted, during the first duration t1, in order to prevent the ageing of the liquid crystal operating under the driving voltage in a same direction for a long time, the driving voltage applied to the pixel electrodes needs to change over time and the duration of the same voltage level should be less than the ageing time of the liquid crystal. Preferably, in this embodiment the driving voltage applied to the pixel electrodes is in the form of square wave, and the polarity of the square wave is changed in an alternating way with respect to the grounding state (zero potential in this embodiment). The manner for applying voltage to the scanning lines and the data lines is the same as that for the conventional display drive in the prior art, and will not be described here. Figure 9 is only used to show that the potentials of the scanning lines and the data lines are not zero during normal display.

[0098] During the second duration t2, a driving voltage of touch detecting is applied to the sensing electrodes 1022 and driving electrodes 1021 of the common electrode layer 102 and the dummy electrodes 1023 are grounded for detection of touch signal.

[0099] It is to be noted that during the second duration t2, the potential of the pixel electrodes is floating (may not be zero) and the power supply to the scanning lines and data lines is stopped; the parts in which the first transparent electrode layer 108 opposite to the driving electrodes 1021 (i.e., the areas of the driving electrode blocks 31 on the first transparent electrode layer 108) are connected to a same signal as the corresponding driving electrodes 1021, and the parts on the first transparent electrode layer 108 corresponding to the sensing electrodes 1022 and dummy electrodes 1023 (i.e., the areas of the sensing electrode blocks 32 and the dummy electrode blocks 33 on the first transparent electrode layer 108) are grounded.

[0100] Specifically, the control for the driving electrodes and sensing electrodes of the common electrode layer will be explained in conjunction with Figure 10. Tx indicates the driving line formed by electrically connecting the driving electrodes in a same row of the common electrode layer, Rx indicates the sensing line formed by electrically connecting the sensing electrodes in a same column of the common electrode layer. The horizontal coordinate indicates time and the vertical coordinate indicates voltage.

[0101] During the second duration t2, driving voltages (i.e., the Tx signals shown in Figure 10) are sequentially applied to individual driving lines (i.e., from driving line Tx2 to driving line Txn), and sensing signals are obtained by corresponding sensing lines Rx. Thereafter, the sensing signals are detected by the detecting circuit to determine the position where the touch occurs. Taking the driving line Tx1 as an example, a driving voltage is applied to the driving line Tx1 during time duration t21, and then a common voltage (i.e., COM voltage) is applied to the driving line Tx1 during time duration t22. Similarly, the driving voltages and the common voltage are sequen-

tially applied to the driving lines (from driving line Tx2 to driving line Txn), to achieve the touch detection. During the first duration t1, the common voltage is simultaneously applied to all the driving lines, sensing lines and dummy electrode lines of the common electrode layer to achieve normal display.

[0102] In conjunction with Figure 4, Figure 5 and Figure 7, the parasitic capacitor between the common electrode layer 102 and the pixel electrode layer 104 will be analyzed. The mechanism of the parasitic capacitor affecting the detection process of the detection circuit 42 is that the charge-discharge process of the parasitic capacitor affects the charge-discharge of the mutual capacitor by the signal voltage which is provided by the signal source 41. Since the quantity of electricity of the pixel electrode is constant when the pixel electrode is floating, the floating pixel electrode can not be charged-discharged in the touch detection process. The floating pixel electrode will not be taken into account when the driving parasitic capacitance and sensing parasitic capacitance are calculated, because the floating electrode only affects the quantity of electricity and voltage of parasitic capacitor and does not affect the capacitance variation of parasitic capacitor, thus reducing the intensity of noise at the detecting circuit 42.

[0103] Next, the parasitic capacitor between the common electrode layer 102 and the first transparent electrode layer 108 will be analyzed. In the touch detection process, the potential applied to the driving electrode block 31 of the first transparent electrode layer 108 is the same as that applied to a driving electrode 1021 of the corresponding the common electrode layer 102, which is equivalent to apply a same potential to the two plates of the driving parasitic capacitor. Therefore, there is no current flowing through the driving parasitic capacitor, thus the effect of driving parasitic capacitor on the current variation measured by the detecting circuit is further eliminated.

[0104] Furthermore, since driving electrode block 31, the sensing electrode block 32 and the dummy electrode block 33 of the first transparent electrode layer 108 are isolated and separated from each other, and also the driving electrode 1021, the sensing electrode 1022 and the dummy electrode 1023 of the common electrode layer 102 are isolated and separated from each other, the channel of the driving parasitic capacitor formed between driving electrode 1021 and the driving electrode block 31 and the channel of the sensing parasitic capacitor formed between the sensing electrode 1022 and the sensing electrode block 32 are opened, as shown in Figure 5, the current path 43 in the Figure 4 is grounded, thus significantly reducing the AC signal sent by the signal source 41 which reaches the detecting circuit 42 through the driving parasitic capacitor C2 and the sensing parasitic capacitor C3, significantly reducing the intensity of basal signal formed at the detecting circuit 42 and improving the accuracy of the touch detection.

[0105] Next, the parasitic capacitor between the com-

mon electrode layer 102 and the scanning lines, and the parasitic capacitor between the common electrode layer 102 and data lines will be analyzed. Since the first transparent electrode layer 108 covers the scanning lines completely, the effect of signal variations in the scanning lines and data lines on the common electrode layer 102 are shielded, and thus the intensity of basal signal formed at the detecting circuit 42 is further reduced and the accuracy of the touch detection is improved.

[0106] Sixth embodiment

[0107] Different from the above embodiments, the first transparent electrode layer of the TN LCD device disclosed in this embodiment is disposed between the second insulating layer 106 and the third insulating layer 105, and the first transparent electrode layer covers the data lines and the scanning lines but does not cover the area of the TFTs.

[0108] The control method of the TN-type LCD device is the same as that disclosed in above embodiments, and difference between this embodiment and the above embodiments lies in that, since the first transparent electrode layer covers the data lines and the scanning lines, with regard to the parasitic capacitor between the common electrode layer 102 and the data lines and the parasitic capacitor between the common electrode layer 102 and the scanning lines, the first transparent electrode layer may shield effects of the data lines and scanning lines on the common electrode layer 102 due to the fact that the potential applied to the driving electrode block 31 of the first transparent electrode layer is same as that applied to the driving electrode 1021, therefore, the intensity of the basal signal formed at the detecting circuit 42 is further reduced to improve the accuracy of the touch detection.

[0109] The description of respective parts in the specification is made in a progressive way, each part focuses on a difference from the other parts, and the sameness between one part and other parts may be referred to by each other.

[0110] With the above descriptions of the disclosed embodiments, the skilled in the art may practice or use the present invention. Various modifications to the embodiments are apparent for the skilled in the art. The general principle suggested herein can be implemented in other embodiments without departing from the scope of the present invention. Therefore, the present invention should not be limited to the embodiments disclosed herein, but has the widest scope that is conformity with the principle and the novel features disclosed herein.

Claims

1. A twisted nematic liquid crystal display device integrated with a touch control function comprising:

an array substrate (109), a color film substrate (101) disposed opposite to the array substrate

(109), and a liquid crystal layer (103) disposed between the array substrate (109) and the color film substrate (101); and

a common electrode layer (102) disposed on a surface of the color film substrate (101) facing the liquid crystal layer (103), wherein the common electrode layer (102) comprises a plurality of sensing electrodes (1022), a plurality of driving electrodes (1021) and a plurality of dummy electrodes (1023) located between the sensing electrodes (1022) and the driving electrodes (1021), and the sensing electrodes (1022), the driving electrodes (1021) and the dummy electrodes (1023) are insulated from one another.

2. The twisted nematic liquid crystal display device according to claim 1, further comprising a black matrix layer located between the color film substrate (101) and the common electrode layer (102), wherein the sensing electrodes (1022), the driving electrodes (1021) and the dummy electrodes (1023) are isolated and insulated from each other by gaps in the common electrode layer (102), and the gaps are covered by the black matrix layer.
3. The twisted nematic liquid crystal display device according to claim 1, wherein the driving electrodes (1021) in a particular row are connected to one another through a first wiring to form a driving line (1026), and the sensing electrodes (1022) in a particular column are connected to one another through a second wiring to form a sensing line (1027); or the driving electrodes (1021) in a particular column are connected to one another through a first wiring to form a driving line (1026), and the sensing electrodes (1022) in a particular row are connected to one another through a second wiring to form a sensing line (1027).
4. The twisted nematic liquid crystal display device according to claim 3, wherein the common electrode layer (102) and the first wiring for electrically connecting the driving electrodes (1021) to one another are on a same conductive layer, and the second wiring for electrically connecting the sensing electrodes (1022) to one another is a conductive bridging (1024) which is on a different conductive layer from the common electrode layer (102); or the common electrode layer (102) and the second wiring for electrically connecting the sensing electrodes (1022) to one another are on a same conductive layer, and the first wiring for electrically connecting the driving electrodes (1021) to one another is a conductive bridging (1024) which is on a different conductive layer from the common electrode layer (102).
5. The twisted nematic liquid crystal display device according to claim 1, wherein all the dummy electrodes

(1023) are electrically connected to one another.

6. The twisted nematic liquid crystal display device according to claim 1, wherein the plurality of driving electrodes (1021) are square and are arranged in a array, strip-shaped sensing electrodes (1022) are disposed between every two adjacent columns of driving electrodes (1021), the dummy electrodes (1023) are disposed between the driving electrode (1021) and the sensing electrode (1022) adjacent to the driving electrode (1021), each of the dummy electrodes (1023) is in an H shape and the H-shaped dummy electrodes (1023) in each row are connected to one another; or the plurality of sensing electrodes (1022) are square electrodes arranged in an array, strip-shaped driving electrodes (1021) are disposed between every two adjacent columns of sensing electrodes (1022), the dummy electrodes (1023) are disposed between the sensing electrode (1022) and the driving electrode (1021) adjacent to the driving electrode (1022), each of the dummy electrodes (1023) is in an H-shape and the H-shaped dummy electrodes (1023) in each row are connected to one another, and the dummy electrodes (1023) in a particular row are electrically connected to one another through a third wiring, and the common electrode layer (102) and the third wiring are on a same conductive layer.
7. The twisted nematic liquid crystal display device according to claim 3, wherein the driving electrodes (1021) and sensing electrodes (1022) are rhombic and are arranged in an array, the dummy electrode (1023) are disposed between the driving electrode (1021) and the sensing electrode (1022) adjacent to each other, the dummy electrode (1023) is a hollowed-out rhombic electrode having a hollowed-out part in which driving electrode (1021) or sensing electrode (1022) is disposed, and the dummy electrodes (1023) in a particular row or in a particular column are electrically connected to one another through a conductive bridging (1024) which is on a different conductive layer from the common electrode layer (102).
8. The twisted nematic liquid crystal display device according to claim 2, further comprising:

a gate electrode layer disposed on a surface of the array substrate (109) facing the liquid crystal layer (103), wherein the gate electrode layer comprises gate electrodes (111) and scanning lines;
 a first insulating layer (107) disposed on the gate electrode layer;
 a silicon island disposed on the first insulating layer (107);
 a source/drain electrode layer (114) disposed

on the silicon island, wherein the source/drain electrode layer (114) comprises source electrodes, drain electrodes and data lines; and the gate electrode (111) within the gate electrode layer, the first insulating layer (107), the silicon island, the source electrode and the drain electrode collectively form a thin film transistor structure;

a second insulating layer (106) disposed on the source/drain electrode layer (114);
 a pixel electrode layer (104) disposed on the second insulating layer (106); and
 a third insulating layer (105) disposed between the second insulating layer (106) and the pixel electrode layer (104).

9. The twisted nematic liquid crystal display device according to claim 8, further comprising:

a first transparent electrode layer (108) disposed between the first insulating layer (107) and the gate electrode layer, wherein the first transparent electrode layer (108) covers the scanning lines of the gate electrode layer and does not cover an area of the gate electrodes (111) at the gate electrode layer; and
 a fourth insulating layer (110) disposed between the first transparent electrode layer (108) and the gate electrode layer.

10. The twisted nematic liquid crystal display device according to claim 8, further comprising a first transparent electrode layer (108) disposed between the second insulating layer (106) and the third insulating layer (105), wherein the first transparent electrode layer (108) covers the data lines and the scanning lines and does not cover an area of the thin film transistors.
11. The twisted nematic liquid crystal display device according to claim 9 or 10, wherein the first transparent electrode layer (108) is disposed opposite to the common electrode layer (102), and plan views of the areas of the first transparent electrode layer (108) and the common electrode layer (102) which are opposite to each other are the same except for an area of the thin film transistors.

12. The twisted nematic liquid crystal display device according to claim 11, wherein the dummy electrode block (33) of the first transparent electrode layer (108) is connected to the sensing electrode block (32) which is located in the hollowed-out part of the dummy electrode block (33).

13. A method of controlling a twisted nematic liquid crystal display device, the control method applicable to the twisted nematic liquid crystal display device ac-

cording to any one of claims 1 to 12 for performing detection of touch signal, the method comprising:

dividing a time-sharing period during display into
a first duration and a second duration, wherein 5
during the time-sharing period, the common
electrode layer is configured to detect a touch
signal and to provide a common electrode sig-
nal, wherein the second duration is shorter than 10
a retention time of liquid crystal molecules and
is longer than or equal to a scanning time for
one detection of the touch signal by the common
electrode layer, and wherein the retention time
of liquid crystal molecules is a time period during 15
which the liquid crystal molecules maintain a
previous state when a driving voltage of the com-
mon electrode layer changes;
during the first duration, applying a same com-
mon potential to a plurality of sensing elec-
trodes, to a plurality of driving electrodes, and 20
to a plurality of dummy electrodes of the com-
mon electrode layer to achieve normal display;
and
during the second duration, grounding the dum-
my electrodes and applying a driving voltage for 25
touch detection to the sensing electrodes and
to the driving electrodes of the common elec-
trode layer.

14. The control method of claim 13, wherein during the 30
first duration of the time-sharing period, the first
transparent electrode layer (108) is grounded,
wherein during the second duration, parts of the first
transparent electrode layer (108) opposite to the 35
driving electrodes (1021) and the corresponding
driving electrodes (1021) are applied a same signal,
and parts of the first transparent electrode layer (108)
opposite to the sensing electrodes (1022) and the
dummy electrodes (1023) are grounded.

15. The control method of claim 13, wherein the duration 40
of the time-sharing period is equal to the duration of
a scanning period of the liquid crystal display device,
the duration of the first duration is greater than half
of the duration of the time-sharing period, and the 45
duration of the second duration is less than half of
the duration of the time-sharing period.

50

55

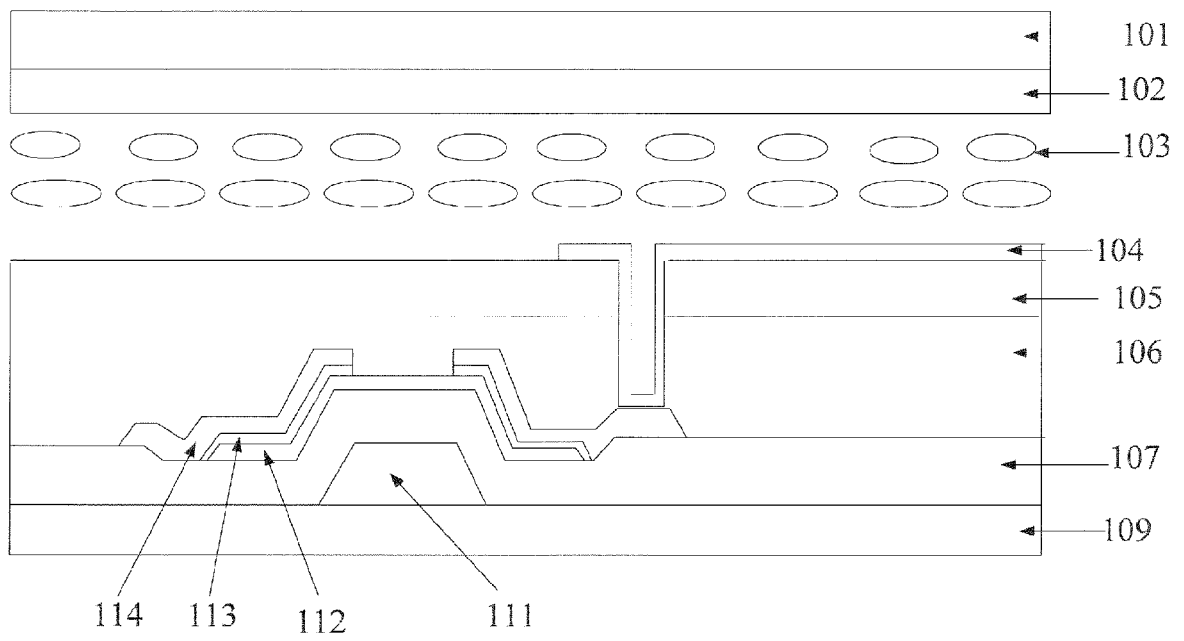


Figure 1

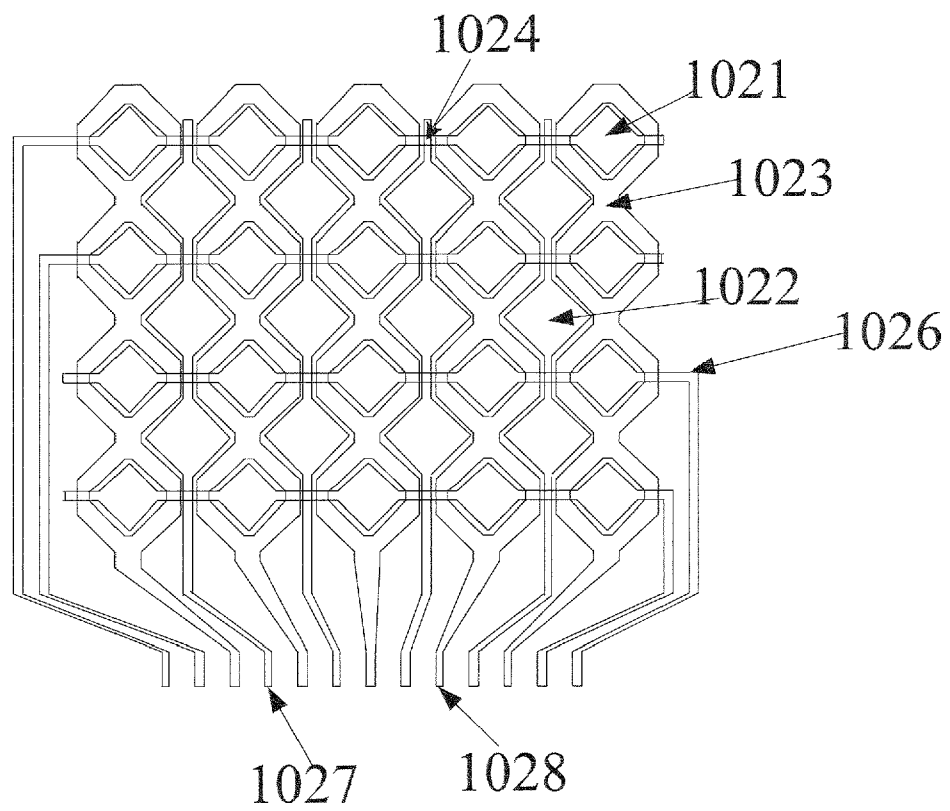


Figure 2

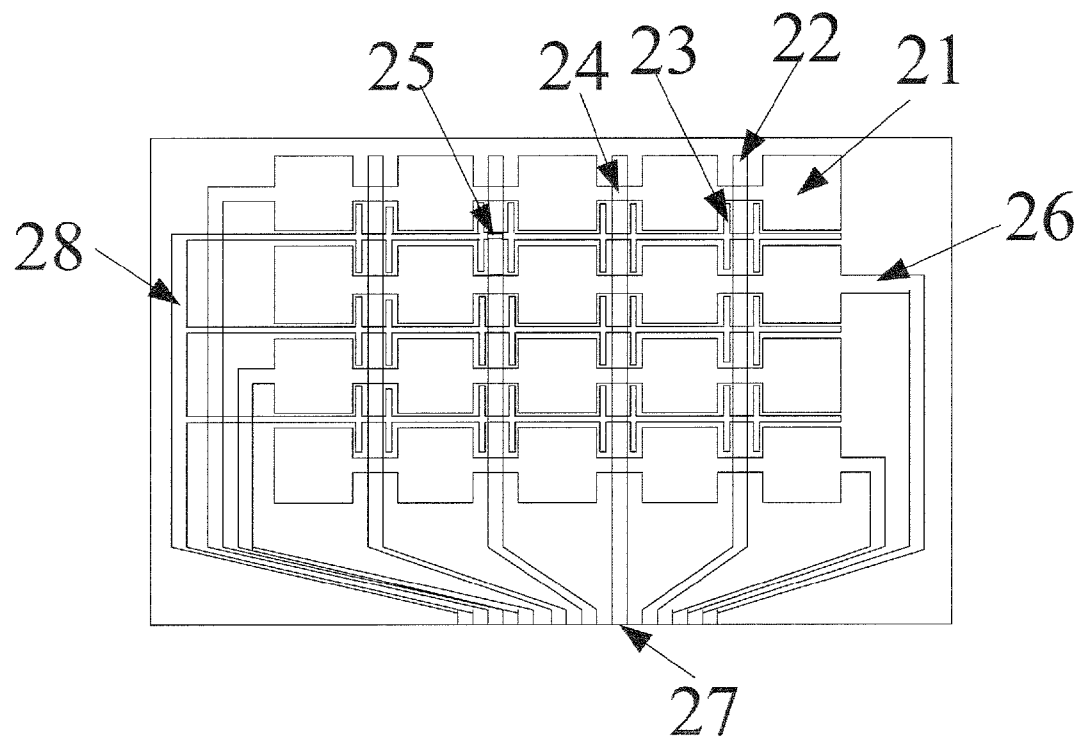


Figure 3

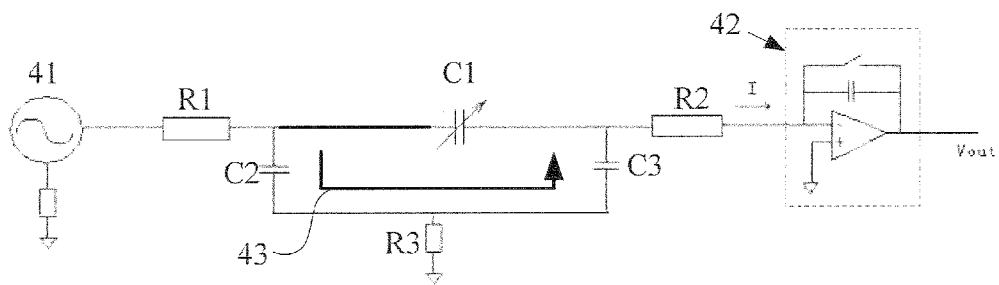


Figure 4

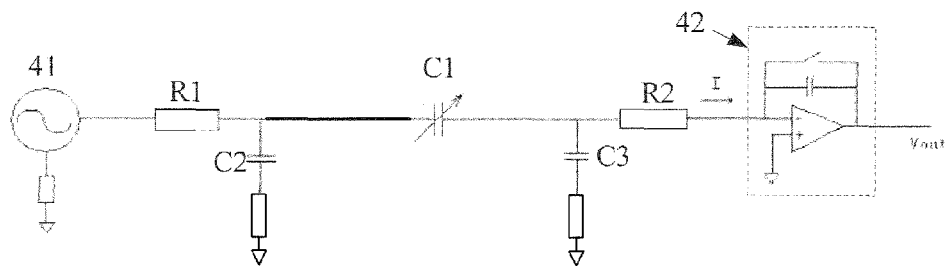


Figure 5

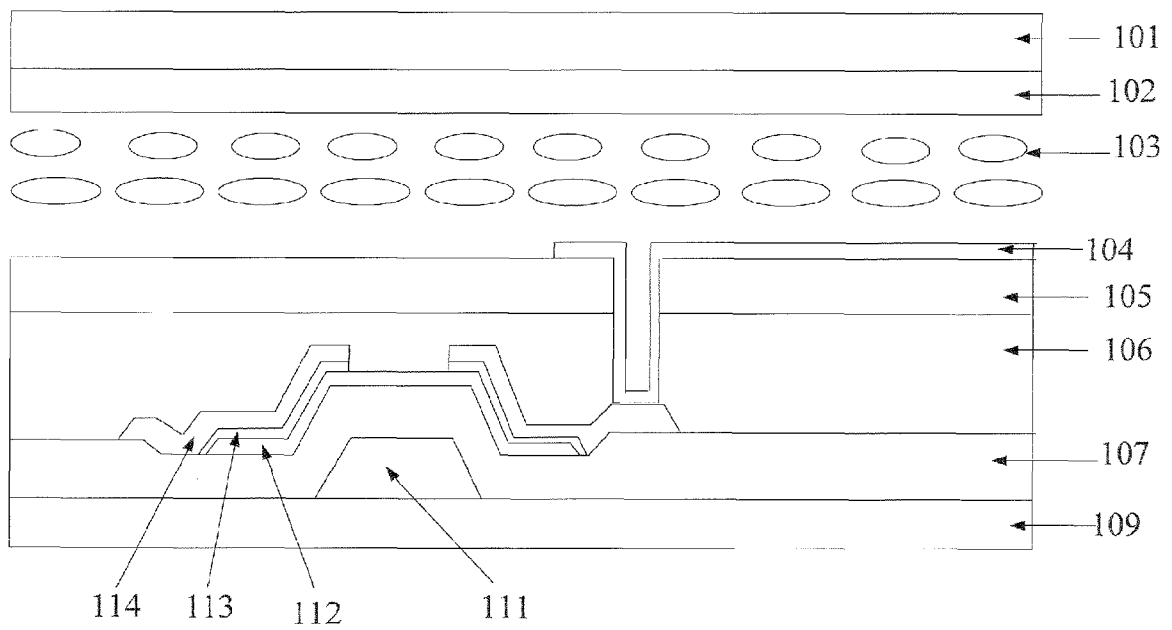


Figure 6

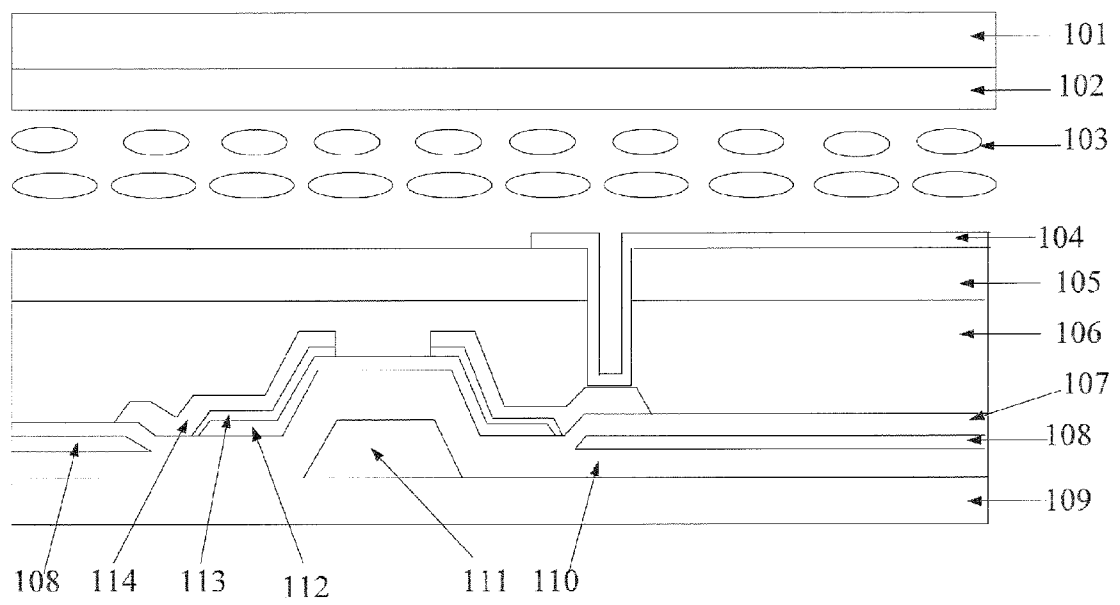


Figure 7

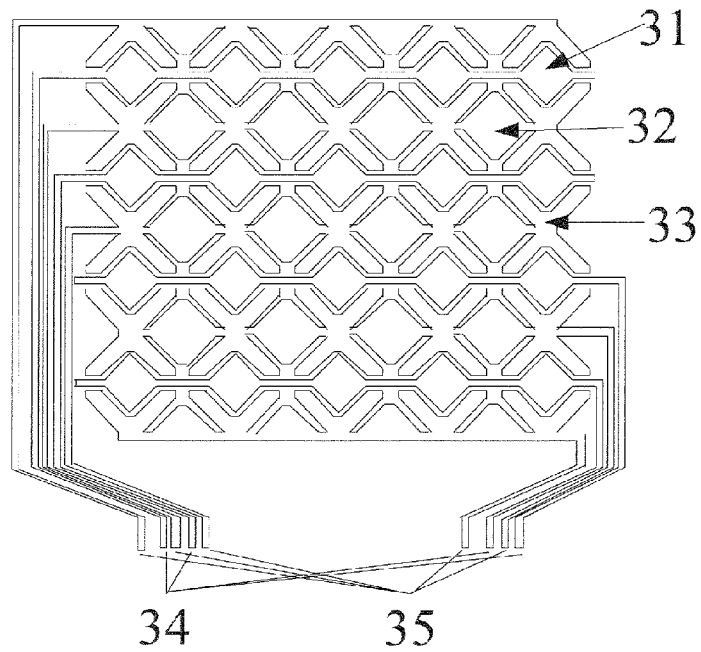


Figure 8

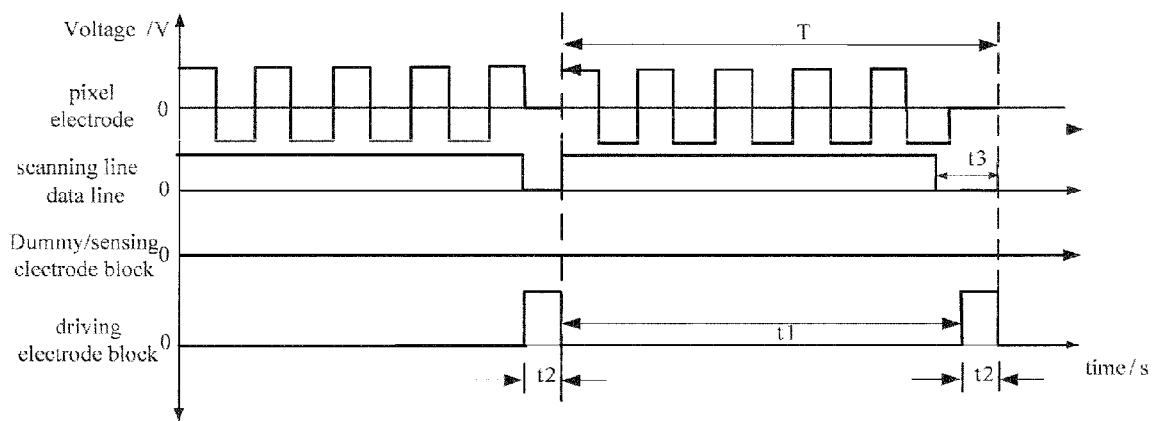


Figure 9

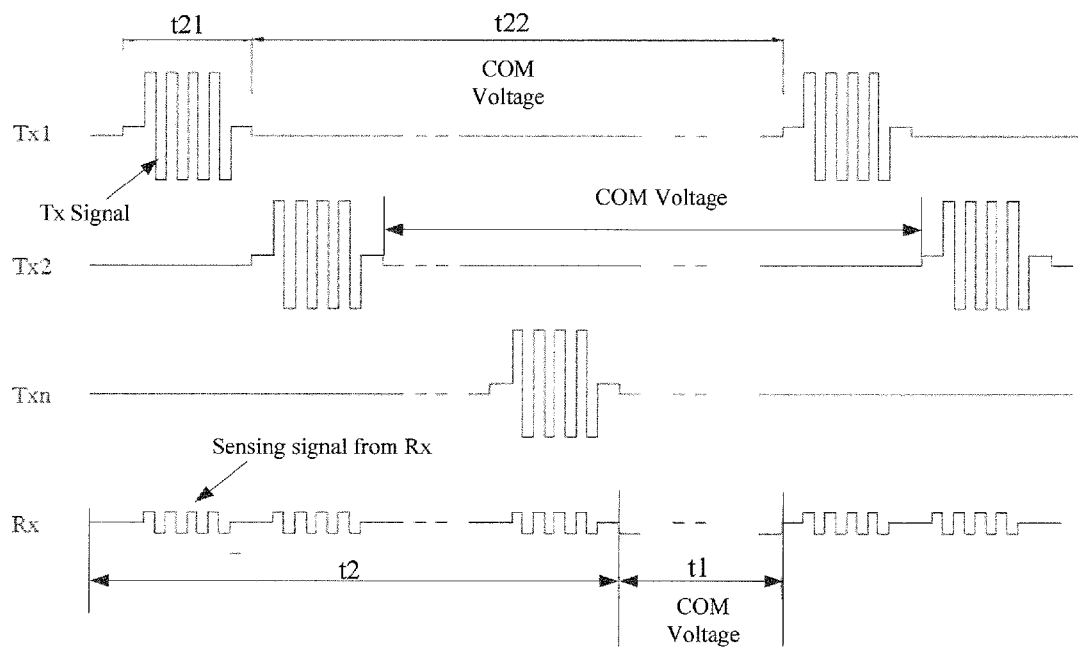


Figure 10



EUROPEAN SEARCH REPORT

 Application Number
 EP 13 19 3968

DOCUMENTS CONSIDERED TO BE RELEVANT			
Category	Citation of document with indication, where appropriate, of relevant passages	Relevant to claim	CLASSIFICATION OF THE APPLICATION (IPC)
Y	EP 2 506 128 A2 (LG DISPLAY CO LTD [KR]) 3 October 2012 (2012-10-03) * paragraph [0035] - paragraph [0055]; figures 1-3 *	1-10,13, 15	INV. G02F1/1333 G02F1/1343 G06F3/041 G06F3/044
Y	WO 2012/118513 A1 (APPLE INC [US]; GE ZHIBING [US]; YU CHENG HO [US]; PARK YOUNG-BAE [US]) 7 September 2012 (2012-09-07) * paragraph [0052] - paragraph [0058]; figures 5,9,10 *	1-10,13, 15	ADD. G02F1/139
Y	EP 2 075 677 A2 (SAMSUNG ELECTRONICS CO LTD [KR]) 1 July 2009 (2009-07-01) * paragraph [0039] - paragraph [0048]; figure 5 *	7	
			TECHNICAL FIELDS SEARCHED (IPC)
			G02F G06F
The present search report has been drawn up for all claims			
Place of search Munich		Date of completion of the search 12 March 2014	Examiner Ammerlahn, Dirk
CATEGORY OF CITED DOCUMENTS		T : theory or principle underlying the invention E : earlier patent document, but published on, or after the filing date D : document cited in the application L : document cited for other reasons & : member of the same patent family, corresponding document	
X : particularly relevant if taken alone Y : particularly relevant if combined with another document of the same category A : technological background O : non-written disclosure P : intermediate document			

EPO FORM 1503 03.82 (P04C01)

**ANNEX TO THE EUROPEAN SEARCH REPORT
ON EUROPEAN PATENT APPLICATION NO.**

EP 13 19 3968

This annex lists the patent family members relating to the patent documents cited in the above-mentioned European search report.
The members are as contained in the European Patent Office EDP file on
The European Patent Office is in no way liable for these particulars which are merely given for the purpose of information.

12-03-2014

Patent document cited in search report	Publication date	Patent family member(s)	Publication date
EP 2506128 A2	03-10-2012	CN 102736291 A	17-10-2012
		EP 2506128 A2	03-10-2012
		KR 20120111678 A	10-10-2012
		TW 201241532 A	16-10-2012
		US 2012249444 A1	04-10-2012

WO 2012118513 A1	07-09-2012	US 2012313881 A1	13-12-2012
		WO 2012118513 A1	07-09-2012

EP 2075677 A2	01-07-2009	CN 101470556 A	01-07-2009
		EP 2075677 A2	01-07-2009
		JP 2009157916 A	16-07-2009
		KR 20090069940 A	01-07-2009
		US 2009167718 A1	02-07-2009
		US 2013278559 A1	24-10-2013

EPO FORM P0459

For more details about this annex : see Official Journal of the European Patent Office, No. 12/82

专利名称(译)	TN液晶显示装置及其触控方法		
公开(公告)号	EP2746840A1	公开(公告)日	2014-06-25
申请号	EP2013193968	申请日	2013-11-22
[标]申请(专利权)人(译)	上海天马微电子有限公司		
申请(专利权)人(译)	上海天马微电子有限公司.		
当前申请(专利权)人(译)	上海天马微电子有限公司.		
[标]发明人	MA JUN ZHAO LIJUN		
发明人	MA, JUN ZHAO, LIJUN		
IPC分类号	G02F1/1333 G02F1/1343 G06F3/041 G06F3/044 G02F1/139		
CPC分类号	G02F1/13338 G02F1/134309 G02F1/1396 G02F2001/134318 G06F3/0412 G06F3/044 G06F3/041		
代理机构(译)	MAIWALD专利ADVOCATE GMBH		
优先权	201210567635.0 2012-12-24 CN		
其他公开文献	EP2746840B1		
外部链接	Espacenet		

摘要(译)

公开了一种集成有触摸控制功能的扭曲向列液晶显示装置。该装置包括阵列基板（109），与阵列基板相对设置的彩色薄膜基板（101），以及设置在阵列基板和彩膜基板之间的液晶层（103）。该器件还包括设置在彩色薄膜基板的面向液晶层的表面上的公共电极层（102）。公共电极层包括多个感测电极（1022），多个驱动电极（1021），以及位于感测电极和驱动电极之间的多个虚设电极（1023）。另外，感测电极，驱动电极和虚设电极彼此绝缘。

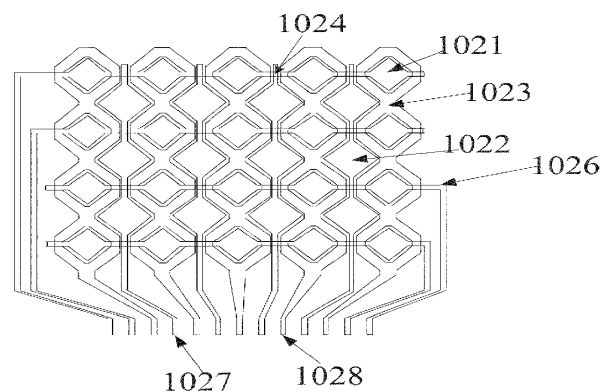


Figure 2