



(11) **EP 1 863 010 A1**

(12) **EUROPEAN PATENT APPLICATION**

(43) Date of publication:  
**05.12.2007 Bulletin 2007/49**

(51) Int Cl.:  
**G09G 3/36<sup>(2006.01)</sup>**

(21) Application number: **06023844.1**

(22) Date of filing: **16.11.2006**

(84) Designated Contracting States:  
**AT BE BG CH CY CZ DE DK EE ES FI FR GB GR HU IE IS IT LI LT LU LV MC NL PL PT RO SE SI SK TR**  
Designated Extension States:  
**AL BA HR MK YU**

(72) Inventors:  
• **Park, Jong Jin**  
**Gyeonggi-do (KR)**  
• **Lee, Sang Yeup**  
**Geoneggi-do (KR)**  
• **Jeong, Seong Hun**  
**Seoul (KR)**

(30) Priority: **02.06.2006 KR 20060049819**

(74) Representative: **TER MEER - STEINMEISTER & PARTNER GbR**  
**Patentanwälte**  
**Mauerkircherstrasse 45**  
**81679 München (DE)**

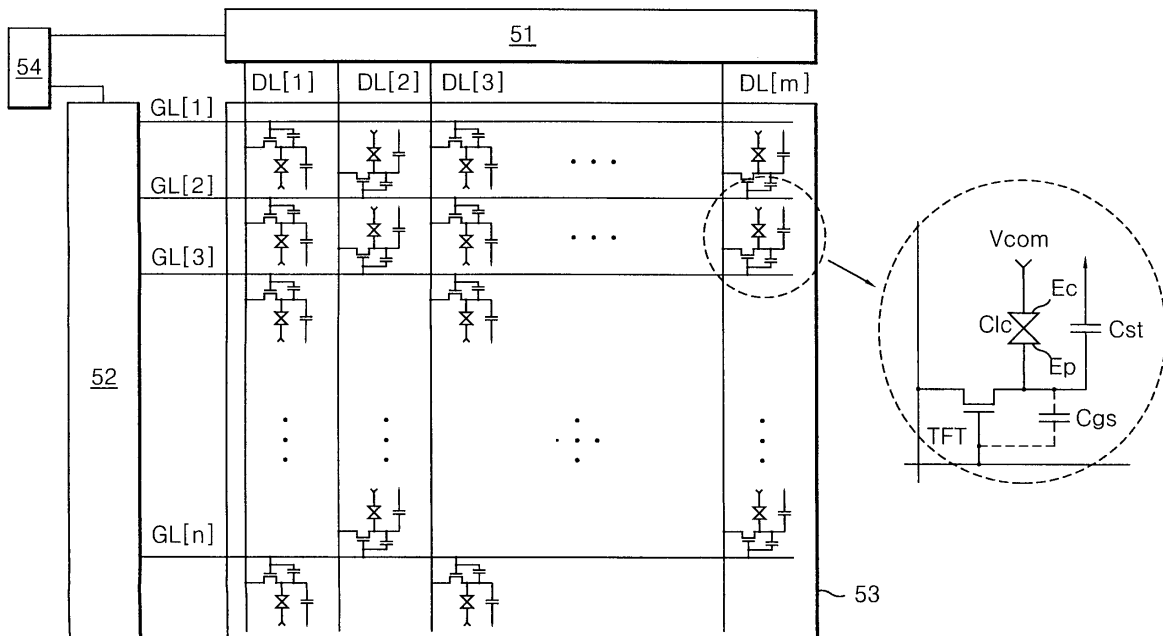
(71) Applicant: **LG. Philips LCD Co. Ltd.**  
**Youngdungpo-Ku**  
**Seoul (KR)**

(54) **Liquid crystal display and driving method thereof**

(57) A liquid crystal display device and a driving method thereof are provided. The liquid crystal display includes a data driver that is operative to supply data to the data lines. A gate driver is operative to supply scan signals to the gate lines. The scan signals have different swing widths from each other in accordance with a po-

larity of the data. The switch devices include a plurality of first switch devices and a plurality of second switch devices. The first switch devices are connected to the (n-1)<sup>th</sup> (where n is a positive integer of not less than 2) gate line and the second switch devices are connected to the n<sup>th</sup> gate line.

**FIG. 3**



**EP 1 863 010 A1**

**Description**

**[0001]** This application claims the benefit of the Korean Patent Application No. P10-2006-0049819 filed on June 02, 2006, which is hereby incorporated by reference.

**BACKGROUND**Field

**[0002]** The present embodiments relate to a liquid crystal display device and a driving method thereof.

Related Art

**[0003]** Generally, a liquid crystal display device controls the light transmittance of liquid crystal by use of electric field, thereby displaying a picture. The liquid crystal display device includes a liquid crystal display panel where liquid crystal cells are arranged in a matrix shape and a drive circuit for driving the liquid crystal display panel.

**[0004]** In the liquid crystal display panel, as shown in FIG. 1, gate lines GL cross data lines DL, and a thin film transistor TFT for driving a liquid crystal cell is formed at each of the crossing parts of the gate lines GL and the data lines DL. The thin film transistor TFT supplies a data voltage  $V_d$  from the data line to a pixel electrode  $E_p$  of the liquid crystal cell Clc in response to a scan signal supplied through the gate line GL.

**[0005]** A gate electrode of the thin film transistor TFT is connected to the gate line GL. A source electrode of the thin film transistor TFT is connected to the data line DL. A drain electrode of the thin film transistor TFT is connected to the pixel electrode of the liquid crystal cell Clc. The liquid crystal cell Clc is charged with a potential difference between the data voltage  $V_d$  supplied to the pixel electrode  $E_p$  and the common voltage  $V_{com}$  supplied to the common electrode  $E_c$ . The arrangement of liquid crystal molecules is changed by the electric field formed by the potential difference to control the amount of the transmitted light or to block the light .

**[0006]** The common electrode  $E_c$  is formed in the upper substrate and the lower substrate of the liquid crystal display panel in accordance with a method of applying the electric field to the liquid crystal cell Clc. A storage capacitor Cst for keeping a charge voltage of the liquid crystal cell Clc is formed between the common electrode  $E_c$  and the pixel electrode  $E_p$ .

**[0007]** The liquid crystal display panel is driven by an inversion method where the polarity of the data voltage  $V_d$  is inverted for each fixed period in order to prevent the deterioration of the liquid crystal cell Clc. The inversion method includes a dot inversion method, a line inversion method, a column inversion method, and a frame inversion method.

**[0008]** FIG. 2 represents drive voltages supplied to the liquid crystal display panel which is driven by a line inversion method. In FIG. 2, ' $V_g$ ' is a scan signal supplied to the gate line GL, ' $V_d$ ' is a data voltage supplied to the data line DL, ' $V_{com}$ ' is a common voltage supplied to the common electrode  $E_c$  of the liquid crystal cells Clc, and ' $V_{lc}$ ' is a data voltage with which the liquid crystal cell Clc is charged or discharged.

**[0009]** Referring to FIG. 2, in the driving of the line inversion method, the common voltage  $V_{com}$  is supplied as a fixed DC voltage. The data voltage  $V_d$  has its polarity inverted on the basis of the common voltage  $V_{com}$  for each horizontal period 1H. If a normal black mode is assumed, the transmittance of the light transmitted through the liquid crystal layer is increased as the potential difference between the data voltage  $V_d$  and the common voltage  $V_{com}$  is increased. The transmittance of the light transmitted through the liquid crystal layer is decreased as the potential difference of the data voltage  $V_d$  and the common voltage  $V_{com}$  is reduced.

**[0010]** The scan signal  $V_g$  swings between a gate high voltage  $V_{gh}$  which is set as a voltage for turning on the thin film transistor TFT and a gate low voltage  $V_{gl}$  which is set as a voltage for turning off the thin film transistor TFT. The liquid crystal cell Clc is charged with the data voltage  $V_d$  supplied as a gamma voltage and maintains the charged voltage for a fixed time for a scan period while the scan signal  $V_g$  maintains the gate high voltage  $V_{gh}$ .

**[0011]** Alternatively, the voltage charged in the liquid crystal cell Clc and the storage capacitor Cst for the scan period, when the thin film transistor TFT maintains a turn-on state, should last after the thin film transistor TFT is changed to a turn-off state, but a charge voltage of the liquid crystal cell Clc is shifted by  $\Delta V_p$  because of a parasitic capacitor  $C_{gd}$  between the gate electrode and the drain electrode of the thin film transistor TFT. The  $\Delta V_p$  is a kickback voltage or feed-through voltage. The feed-through voltage  $\Delta V_p$  is generally calculated by a formula shown in Mathematical Formula 1 below.

[Mathematical Formula 1]

$$\Delta V_p = (C_{gd} \times \Delta V_g) / (C_{gd} + C_{lc} + C_{st})$$

5

**[0012]** Herein, ' $\Delta V_p$ ' is a feed-through voltage. ' $C_{gd}$ ' is a parasitic capacitance between the gate electrode and the drain electrode of the thin film transistor TFT. ' $C_{lc}$ ' is a capacitance which is equivalently formed in the liquid crystal cell Clc. ' $C_{st}$ ' is a capacitance of a storage capacitor Cst. ' $\Delta V_g$ ' is a difference voltage between the gate high voltage  $V_{gh}$  and the gate low voltage  $V_{gl}$ .

10

**[0013]** The liquid crystal cell Clc is charged with a voltage which is lower by  $\Delta V_p$  than the data voltage  $V_d$  corresponding to the video data due to the feed-through voltage  $\Delta V_p$ , i.e., the liquid crystal cell Clc is charged with a voltage having a potential difference lower by  $\Delta V_p$  than the data voltage  $V_d$  in relation to the common voltage  $V_{com}$  when driven in a positive (+) polarity. The liquid crystal cell Clc is charged with a voltage having a potential difference higher by  $\Delta V_p$  than the data voltage  $V_d$  in relation to the common voltage  $V_{com}$  when driven in a negative (-) polarity. Accordingly, a flicker or residual image appears in a screen of the liquid crystal display panel due to a voltage offset in relation to the common voltage. The common voltage  $V_{com}$  is adjusted by the voltage offset caused by the feed-through voltage  $\Delta V_p$  in the related art.

15

**[0014]** In relation to the positive (+) and negative (-) data voltages  $V_d$  which express the same gray level, a difference  $V_{gd}$  between the data voltage  $V_d$  and the gate high voltage  $V_{gh}$  when driven in the positive (+) polarity is different from a difference  $V_{gd}$  between the data voltage  $V_d$  and the gate high voltage  $V_{gh}$  when driven in the negative (-) polarity. The charge amount charged in the parasitic capacitor  $C_{gd}$  between the gate electrode and the drain electrode of the thin film transistor TFT is different when driven in the positive (+) polarity and when driven in the negative (-) polarity. The feed-through voltage  $\Delta V_p$  when driven in the positive (+) polarity becomes different from the feed-through voltage  $\Delta V_p$  when driven in the negative (-) polarity.

20

25

**[0015]** For example, the liquid crystal display panel is driven with a scan signal which swings between the gate low voltage  $V_{gl}$  of -5V and the gate high voltage  $V_{gh}$  of 25V, a common voltage of 7V, and a data voltage  $V_d$  of 14V which swings between 0V and 14V. In this example, the difference  $V_{gd}$  of the gate high voltage  $V_{gh}$  and the data voltage  $V_d$  is 11V when driven in the positive (+) polarity, but the difference  $V_{gd}$  of the gate high voltage  $V_{gh}$  and the data voltage  $V_d$  is 25V when driven in the negative (-) polarity. In this example, 14V and 0V represents the white gray level in the positive (+) driving and in the negative (-) driving, respectively. Accordingly, a simulation of the feed-through voltage  $\Delta V_p$ , the feed-through voltage  $\Delta V_p$  in the positive (+) driving is 1.121V, but the feed-through voltage  $\Delta V_p$  in the negative (-) driving is 1.531V.

30

**[0016]** For example, there is a difference of about 400mV between the feed-through voltage  $\Delta V_p$  in the positive (+) driving and the feed-through voltage  $\Delta V_p$  in the negative (-) driving. In case the feed-through voltage  $\Delta V_p$  in the positive (+) driving is different from the feed-through voltage  $\Delta V_p$  in the negative (-) driving, the flickers and residual images become worse as the difference is increased. This problem is even further increased when being driven by a line inversion method rather than by a dot inversion method, among the inversion methods which designates a positive and negative inversion cycle.

35

40

## SUMMARY

**[0017]** The present embodiments may obviate one or more of the limitations of the related art. For example, in one embodiment a liquid crystal display device is adaptive for improving display quality by reducing the difference between a feed-through voltage when driven in a positive polarity and a feed-through voltage when driven in a negative polarity.

45

**[0018]** In another exemplary embodiment, a liquid crystal display device is adaptive for improving display quality by changing an arrangement structure of a pixel to supply data, of which the polarities are different from each other, to liquid crystal cells which are adjacent horizontally and vertically.

**[0019]** In one embodiment, a liquid crystal display device includes a plurality of data lines and a plurality of gate lines which cross the data lines. A plurality of liquid crystal cells are formed in pixel areas which are defined by the crossing of the data lines and the gate lines. A plurality of switch devices are disposed between the data lines and the gate lines. A data driver supplies data to the data lines. The data have the same polarity for the liquid crystal cells that are adjacent horizontally and opposite polarities for the liquid crystal cells that are adjacent vertically. A gate driver supplies scan signals to the gate lines. The scan signals have different swing widths from each other in accordance with a polarity of the data. The switch devices includes a plurality of first switch devices for driving a first liquid crystal cell and a plurality of second switch devices for driving a second liquid crystal cell. The first switch device is connected to the (n-1)<sup>th</sup> (where, n is a positive integer of not less than 2) gate line and the second switch device is connected to the n<sup>th</sup> gate line.

50

55

**[0020]** In one embodiment, the scan signal includes a first scan signal of a first swing width corresponding to the

positive data. A second scan signal of a second swing width corresponds to the negative data, and the second swing width is narrower than the first swing width.

[0021] In one embodiment, the first scan signal has a first swing width between a first gate high voltage of not less than a threshold voltage of the switch device and a gate low voltage of less than the threshold voltage of the switch device. The second scan signal has a second swing width between the gate low voltage and a second gate high voltage. The second gate high voltage is a voltage between a threshold voltage of the switch device and the first gate high voltage.

[0022] In one embodiment, the gate drive circuit includes a shift register which generates a shift pulse and sequentially shifts the shift pulse by the unit of the gate line; and a level shifter which adjusts a swing width of the shift pulse to any one of the first swing width and the second swing width in accordance with the polarity of the data signal, and supplies to the gate lines.

[0023] In another embodiment, a driving method includes generating data, which have the same polarity for the liquid crystal cells that are adjacent horizontally and opposite polarities for the liquid crystal cells that are adjacent vertically, to supply to the data lines; and supplying scan signals, which have different swing widths from each other in accordance with a polarity of the data, to the gate lines.

[0024] In another embodiment of the driving method, the liquid crystal display device has a plurality of data lines, a plurality of gate lines which cross the data lines, a plurality of liquid crystal cells formed in pixel areas which are defined by the crossing of the data lines and the gate lines, a plurality of first switch devices disposed between the data lines and the gate lines for driving a first liquid crystal cell, and a plurality of second switch devices for driving a second liquid crystal cell which is horizontally adjacent to the first liquid crystal cell, and where the first switch device is connected to the  $(n-1)^{\text{th}}$  ( $n$  is a positive integer of not less than 2) gate line and the second switch device is connected to the  $n^{\text{th}}$  gate line according to another aspect of the present invention

[0025] In the driving method, the scan signal includes a first scan signal of a first swing width corresponding to the positive data and a second scan signal of a second swing width corresponding to the negative data, and the second swing width is narrower than the first swing width.

## BRIEF DESCRIPTION OF THE DRAWINGS

[0026] FIG. 1 is a diagram representing a pixel cell included in a liquid crystal display panel of the related art;

[0027] FIG. 2 is a diagram representing drive voltages for the pixel cell of FIG. 1;

[0028] FIG. 3 is a diagram representing a liquid crystal display device according to one embodiment;

[0029] FIG. 4A is a diagram representing a polarity of data supplied to a liquid crystal display panel according to a line inversion method;

[0030] FIG. 4B is a diagram for explaining that the polarity of the data revealed in a liquid crystal display panel is substantially a dot inversion type;

[0031] FIG. 5 is a diagram representing a detail configuration of a gate driver shown in FIG. 3;

[0032] FIG. 6 is a diagram representing a circuit configuration of first and second level shifters and first and second stages of a shift register in a gate drive circuit shown in FIG. 5;

[0033] FIG. 7 is a diagram representing a drive signal waveform of a circuit shown in FIG. 6; and

[0034] FIGs. 8A and 8B are diagrams representing a drive signal waveform upon the line inversion.

## DETAILED DESCRIPTION

[0035] Exemplary embodiments will be illustrated with reference to FIGs. 3 to 8B. FIG. 3 is a diagram representing a liquid crystal display device. FIG. 4A is a diagram representing a polarity of data supplied to a liquid crystal display panel by a line inversion method. FIG. 4B is a diagram for explaining that the polarity of the data realized in a liquid crystal display panel is substantially a dot inversion type. FIG. 5 is a diagram representing a detail configuration of a gate drive circuit shown in FIG. 3.

[0036] In one embodiment, as shown in FIG. 3, a liquid crystal display device includes a liquid crystal display panel where a plurality of gate lines GL1 to GLn ( $n$  is a positive integer) cross a plurality of data lines DL1 to DLm ( $m$  is a positive integer) and which have liquid crystal cells Clc that are formed in pixel areas defined by the crossing thereof. A thin film transistor TFT is formed at each crossing part of the gate line GL1 to GLn and the data line DL1 to DLm for driving a liquid crystal cell Clc. A data drive circuit 51 for supplying a video signal to the data lines DL1 to DLm. A gate drive circuit 52 for supplying a scan signal to the gate lines GL1 to GLn. A timing controller 54 controls the data drive circuit 51 and the gate drive circuit 52.

[0037] In one embodiment, the liquid crystal display panel 53 has a structure where the upper substrate is bonded with the lower substrate. The gate lines GL1 to GLn and the data lines DL1 to DLm are formed to cross each other in the lower substrate of the liquid crystal display panel 53. The thin film transistor TFT formed at each of the crossing parts of the gate lines GL1 to GLn and the data lines DL1 to DLm supplies a data voltage  $V_d$  from the  $j^{\text{th}}$  data line DL[j] (but,

$1 \leq j \leq m$ ) to the pixel electrode  $E_o$  of the liquid crystal cell  $Cl_c$  in response to the scan signal  $Vg[k]$  from the  $k^{\text{th}}$  gate line  $GL[k]$  (but,  $1 \leq k \leq n$ ).

**[0038]** In one embodiment, the thin film transistors TFT include a plurality of first thin film transistors which drive first liquid crystal cells and a plurality of second thin film transistors which drive second liquid crystal cells that are horizontally adjacent to the first liquid crystal cells and which are disposed to alternate the first thin film transistors.

**[0039]** Herein, the first thin film transistor is connected to the  $(n-1)^{\text{th}}$  ( $n$  is a positive integer of not less than 2) gate line and the second thin film transistor is connected to the  $n^{\text{th}}$  gate line, thus a pixel arrangement thereof is made in a zigzag shape. The polarity of the data revealed in the liquid crystal display panel 53 is substantially a dot inversion type, as shown in FIG. 4B. The data are supplied to the liquid crystal display panel 53 according to the line inversion method, as shown in FIG. 4A.

**[0040]** In one exemplary embodiment, cross-talk and a residual image are eliminated and device reliability is secured, for example, by using the dot inversion driving and controlling the level of the gate high voltage  $V_{gh}$  to be different in accordance with the polarity of the data which are to be explained below.

**[0041]** In one embodiment, the gate electrodes of the thin film transistors TFT are connected to the gate lines  $GL1$  to  $GLn$ , drain electrodes are connected to the data lines  $DL1$  to  $DLn$ , and source electrodes are connected to the pixel electrodes  $E_p$  of the liquid crystal cells  $Cl_c$ . The liquid crystal cell  $Cl_c$  is charged with a potential difference between the data voltage  $V_d$  supplied to the pixel electrode  $E_p$  and the common voltage  $V_{com}$  supplied to the common electrode  $E_c$ . The arrangement of the liquid crystal molecules is changed by the electric field formed by the potential difference to control the amount of the transmitted light.

**[0042]** The common electrode  $E_c$  is formed in the upper substrate or the lower substrate in accordance with a method of applying the electric field to the liquid crystal cell  $Cl_c$ . A storage capacitor  $C_{st}$  that maintains a charge voltage of the liquid crystal cell  $Cl_c$  is formed between the pixel electrode  $E_p$  and the common electrode  $E_c$  of the liquid crystal cell  $Cl_c$ . The storage capacitor  $C_{st}$  is formed between the pre-stage gate line  $GL(k-1)$  and the pixel electrode  $E_p$  of the liquid crystal cell  $Cl_c$ . For example, a color filter for realizing color and a black matrix for reducing light interference between adjacent pixels are formed in the upper substrate of the liquid crystal display panel 53. In one embodiment, additional suitable elements may be formed in the upper substrate of the liquid crystal display panel. Further, polarizers of which the light axes are at right angles to each other are adhered to the upper substrate and the lower substrate respectively, and an alignment film for setting a pre-tilt angle of the liquid crystal is formed in the inner surface of the substrates.

**[0043]** The timing controller 54 receives, for example, a digital video data RGB, and/or vertical/horizontal synchronization signals, and generates a gate control signal GDC that controls the gate drive circuit 52 and a data control signal DDC that controls the data drive circuit 51. The timing controller 54 re-aligns the digital video data in accordance with the clock signal to supply to the data drive circuit 51. The gate control signal GDC includes, for example, a gate start pulse GSP, a gate shift clock GSC, a gate output signal GOE. The data control signal DDC includes, for example, a source start pulse SSP, a source shift clock SSC, a source output signal SOE, a polarity control signal POL.

**[0044]** In one embodiment, the data drive circuit 51 converts the digital video data from the timing controller 54 into an analog gamma compensation voltage, i.e., a data voltage  $V_d$ , to supply to the data lines  $DL1$  to  $DLm$ . The data drive circuit 51 includes a shift register for sampling the clock signal; a register for temporally storing the digital video data; a latch for storing the data for each line in response to the clock signal from the shift register and for outputting the stored data of the one line portion at the same time; a digital/analog converter for selecting a positive/negative gamma voltage in correspondence to the digital data value from the latch; a multiplexer for selecting the data line  $DL[j]$  to which the analog data converted by the positive/negative gamma voltage are supplied; and an output buffer connected between the multiplexer and the data line  $DL[j]$ .

**[0045]** In one embodiment, the gate drive circuit 52 sequentially supplies the scan signal  $Vg1$  to  $Vgn$ , which selects the horizontal line of the liquid crystal display panel to which the data voltage is supplied, to the gate lines  $GL1$  to  $GLn$ . The gate drive circuit 52, as shown in FIG. 5, includes a shift register 61 for sequentially shifting the gate start pulse GSP to generate the shift output signal  $Vs1$  to  $Vsn$ ; level shifters  $LS1$  to  $LSn$  which convert the shift output signal  $Vs1$  to  $Vsn$  from the shift register 61 into the scan signal  $Vg1$  to  $Vgn$  of which the voltage level is suitable for driving the thin film transistor and which supplies to the gate lines  $GL1$  to  $GLn$ ; and a voltage selector 62 for supplying a reference voltage required for converting the voltage level of the level shifter  $LS1$  to  $LSn$ .

**[0046]** In one embodiment, the shift register 61 includes a plurality of stages which are connected in cascade. Each of the stages  $S1$  to  $Sn$  receives the gate start pulse GSP or the shift output signal  $Vs1$  to  $Vsn$  of the pre-stage  $S1$  to  $Sn-1$  as an input signal which is to be shifted, and outputs the shift output signal  $Vs1$  to  $Vsn$  which is shifted by one clock, i.e., one horizontal period. For example, the gate start pulse GSP is supplied to the first stage  $S1$  as the input signal which is to be shifted, and the shift output signal  $Vs1$  to  $Vs[n-1]$  of the pre-stage  $S1$  to  $S[n-1]$  is supplied to the second to  $n^{\text{th}}$  stage  $S2$  to  $Sn$  as the input signal which is to be shifted. The input terminal of the input signal, which is to be shifted, of the  $k^{\text{th}}$  stage  $S_k$  except the first stage  $S1$  is connected to the output terminal of the shift output signal  $Vs[k-1]$  of the  $(k-1)^{\text{th}}$  stage  $S[k-1]$ .

**[0047]** In another embodiment, each of the level shifters  $LS1$  to  $LSn$  converts the shift output signal  $Vs1$  to  $Vsn$  which

is outputted from the stage S1 to Sn of the shift register 61 into the scan signal Vg1 to Vgn which swings between the gate low voltage Vgl and any one of the first and second gate high voltages Vgh1, Vgh2 that are selected by a voltage selector 62, and supplies to the gate lines GL1 to GLn. The first and second gate high voltages Vgh1, Vgh2 are a voltage of not less than a threshold voltage of the thin film transistors TFT, i.e., a gate-on voltage, and the gate low voltage Vgl is a voltage of less than a threshold voltage of the TFT's, i.e., a gate-off voltage. For example, the gate low voltage Vgl is supplied from an external voltage source.

**[0048]** In one embodiment, the voltage selector 62 receives the first and second gate high voltages Vgh1, Vgh2 from an external voltage source and selects any one of the first gate high voltage Vgh1 or the second gate high voltage Vgh2 in accordance with the polarity signal POL from the timing controller 51 to supply to the level shifter LS1 to LSn. The first gate high voltage Vgh1 and the second gate high voltage Vgh2 have different voltage levels from each other. Assuming that the first gate high voltage Vgh1 has a higher voltage level than the second gate high voltage Vgh2, the voltage selector 62 selects the first gate high voltage Vgh1 in response to the positive polarity signal POL and the second gate high voltage Vgh2 in response to the negative polarity signal POL.

**[0049]** TABLE 1 below is an exemplary simulation result of the feed-through voltage  $\Delta Vp$  by fixing the voltage level of the first gate high voltage Vgh1 and changing the voltage level of the second gate high voltage Vgh2. Referring to TABLE 1, the difference of the feed-through voltage  $\Delta Vp$  between upon the positive (+) driving and upon the negative (-) driving is 410mV in a case where the first and second gate high voltages Vgh1, Vgh2 are identically set to be 25V. The difference of the feed-through voltage  $\Delta Vp$  between upon the positive (+) driving and upon the negative (-) driving is 6mV in a case where the first gate high voltage Vgh1 is set to be 25V and the second gate high voltage Vgh2 is set to be 17.7V. Accordingly, the difference of the feed-through voltage  $\Delta Vp$  is reduced.

**[0050]** In one embodiment, the gate-on voltage upon the positive (+) driving is different from the gate-on voltage upon the negative (-) driving, i.e., the gate-on voltage upon the negative (-) driving is set to be lower than the gate-on voltage upon the positive (+) driving. Accordingly, the feed-through voltage  $\Delta Vp$  difference between upon the positive (+) driving and upon the negative (-) driving is reduced. Alternatively, the liquid crystal display device has a voltage level which is required for driving and which is different by kinds and by sizes, accordingly the second gate high voltage Vgh2 is set to be a value which is optimized experimentally to be suitable for the subject.

[TABLE 1]

Polarity signal (POL)	Vg[k]		Vd	Vgd (Vgh - vd)	$\Delta vp$	Difference between $\Delta Vp$ upon positive (+) driving and $\Delta Vp$ upon negative (-) driving
	Vgl	Vgh				
Positive (+)	-5V	25V	14V	11V	1.121V	-
Negative (-)	-5V	25V	0V	25V	1.531V	410mV
	-5V	22V	0V	22V	1.3697V	248mV
	-5V	20V	0V	20V	1.2525V	131mV
	-5V	18V	0V	18V	1.1443V	23mV
	-5V	17.7V	0V	17.7V	1.1275V	6mV

**[0051]** FIG. 6 illustrates a circuit configuration of the first and second level shifters LS1, LS2 and the first and second stages S1, S2 of the shift register 61 in the gate drive circuit 52 shown in FIG. 5. FIG. 7 illustrates waveforms of the drive signals. FIGs 8A and 8B are diagrams that illustrate a drive signal waveform upon the line inversion.

**[0052]** The operation of the gate drive circuit 52 will be explained with reference to FIGs. 6 and 8B. In one embodiment, the second to n<sup>th</sup> stages S2 to Sn of the shift register 61 has the same circuit configuration as the first stage S1 except that the shift output signal Vs1 to Vs[n-1] of the pre-stage S1 to S[n-1] instead of the gate start pulse is supplied as the shift input signal, and the second to n<sup>th</sup> level shifter LS2 to LSn also have the same circuit configuration as the first level shifter LS1. Accordingly, the operation description will be made on the basis of the first level shifter LS1 and the first stage S1 of the shift register 61 and the description for the configuration below will be omitted.

**[0053]** In one embodiment, as shown in FIGs. 6 and 7, the gate start pulse GSP is supplied to the gate electrode of the first and fourth transistors T1, T4 as a high logic voltage for a t1 period which the first and second clock signals C1, C2 maintains a low logic voltage, which turns on the first and fourth transistors T1, T4. In one embodiment, for example, at this moment, a voltage  $V_{N1}$  on the first node N1 is increased to an intermediate voltage  $V_m$  to turn on a fifth transistor T5, but the first clock signal C1 is kept as the low logic voltage, thus the voltage on the third node N3, i.e., the first shift output voltage Vs1 maintains the low logic voltage. The voltage  $V_{N2}$  on the second node N2 is decreased by the turn-on of the fourth transistor T4 to turn off a second transistor T2 and a sixth transistor T6, which blocks a discharge path

of the first and third node N1, N3.

**[0054]** In one embodiment, during a t2 period, the gate start pulse GSP is inverted to the low logic voltage, but the first clock signal C1 is inverted to the high logic voltage. In one embodiment, for example, at this moment, the first transistor T1 and the fourth transistor T4 are turned off and the voltage  $V_{N1}$  on the first node N1 is increased to a voltage of not less than the threshold voltage of the fifth transistor T5 as the voltage charged in the parasitic capacitance between the drain electrode and the gate electrode of the fifth transistor T5 to which the high logic voltage of the first clock signal C1 is supplied is added thereto. For example, the voltage  $V_{N1}$  on the first node N1 is increased to a voltage which is higher than that of the t1 period by bootstrapping. Accordingly, during a t2 period, the fifth transistor T5 is turned on and the first shift output signal Vs1 is increased by the voltage of the first clock signal C1, which is supplied by the conduction of the fifth transistor T5, to be inverted to the high logic voltage.

**[0055]** In one embodiment, if the shift output signal Vs1 of the first stage S1 is inverted to the high logic voltage, a seventh transistor T7 of the first level shifter LS1 is turned on and the first gate high voltage Vgh1 or the second gate high voltage Vgh2 are supplied to the first gate line GL1. The first gate high voltage Vgh1 or the second gate high voltage Vgh2 supplied to the first gate line GL1 turns on the thin film transistors TFT of which the gate electrode is connected to the first gate line GL1, thereby supplying the data voltage Vd to the liquid crystal cell Clc. The gate-on voltage supplied to the gate line GL1 is selected by the voltage selector 62 in accordance with the polarity signal POL as described above. The polarity signal POL has a different inversion cycle in accordance with the inversion method.

**[0056]** In the line inversion method, as shown in FIG. 4A, the polarity of the polarity signal POL is inverted for each horizontal period, and also inverted for each frame period. In one embodiment, where the connection of the thin film transistor and the gate line is made in a zigzag shape, the polarity of the data supplied to the liquid crystal cells which are adjacent vertically and horizontally is substantially inverted for each dot, as shown in FIG. 4B. For example, the voltage selector 62 selects the first gate high voltage Vgh1 or the second gate high voltage Vgh2 in accordance with the polarity signal POL of which the polarity is inverted, and the scan signals Vg1 to Vgn are sequentially supplied to the gate lines GL1 to GLn, as shown in FIGs 8A and 8B. Alternatively, the frame period is also called as a field period, and is a display period of one screen when data are applied to all the pixels of one screen. The frame period is standardized to be 1/60 seconds in case of an NTSC system and to be 1/50 seconds in case of a PAL system.

**[0057]** In one embodiment, during a t3 period, the first clock signal C1 is inverted to the low logic voltage and the second clock signal C2 is inverted to the high logic voltage. In one embodiment, for example, at this moment, the high potential power voltage Vdd is supplied to the second node N2 through the third transistor T3, which is turned on in response to the second clock signal C2, to increase the voltage  $V_{N2}$  on the second node N2. The voltage  $V_{N2}$  on the second node N2 turns on the second transistor T2 to discharge the voltage  $V_{N1}$  on the first node N1 to a ground voltage Vss, and at the same time, turns on the sixth transistor T6 to discharge the voltage on the third node N3 to the ground voltage Vss.

**[0058]** In one embodiment, if the voltage on the third node N3 is discharged to the ground voltage Vss, i.e., the shift output signal Vs1 of the first stage S1 is inverted to the low logic voltage, then the seventh transistor T7 of the first level shifter LS1 is turned off. In one embodiment, for example, at this moment, the eighth transistor T8 of the first level shifter LS1 is turned on by the second clock signal C2 to supply the gate low voltage Vgl to the first gate line GL. The gate low voltage Vgl supplied to the first gate line GL1 turns off the thin film transistors TFT of which the gate electrode is connected to the first gate line GL1.

**[0059]** In one embodiment, during a t4 period, if the second clock signal C2 is inverted to the low logic voltage, the third transistor T3 is turned off. In one embodiment, for example, at this moment, the high logic voltage is floated on the second node N2. The high logic voltage floated on the second node N2 is maintained until the fourth transistor T4 is turned on by the gate start pulse GSP in the next frame period to discharge the voltage of the second node N2.

**[0060]** In an alternate embodiment, the shift register 61 and the level shifters LS1 to LSn in the gate drive circuit 52 shown in FIG. 5 are replaced with another shift register and level shifters, which are widely known, other than the circuit shown in FIG. 6.

**[0061]** In one exemplary embodiment, the liquid crystal display device sets the gate-on voltage upon the negative (-) driving lower than the gate-on voltage upon the positive (+) driving to reduce the feed-through voltage  $\Delta Vp$  difference between upon the positive (+) driving and upon the negative (-) driving, thereby preventing the flickers and the residual images to improve the display quality.

**[0062]** In another exemplary embodiment, the arrangement structure of the pixels is changed for the data to be supplied to the liquid crystal display panel according to the line inversion method. The liquid crystal display device and makes the polarity of the data which are revealed in the liquid crystal display panel substantially different for the liquid crystal cells which are adjacent horizontally and vertically. Accordingly, it is possible to improve the display quality by preventing the vertical cross talk and the residual image.

**[0063]** Although the present invention has been explained by the embodiments shown in the drawings described above, it should be understood to the ordinary skilled person in the art that the invention is not limited to the embodiments, but rather that various changes or modifications thereof are possible without departing from the spirit of the invention.

This includes the combination of various embodiments. Accordingly, the scope of the invention shall be determined only by the appended claims and their equivalents.

5 **Claims**

1. A liquid crystal display device, comprising:

10 a plurality of data lines;  
 a plurality of gate lines which cross the data lines;  
 a plurality of liquid crystal cells formed in pixel areas, which are defined by the crossing of the data lines and the gate lines;  
 a plurality of switch devices disposed between the data lines and the gate lines that drive the liquid crystal cells;  
 15 a data driver that is operative to supply data to the data lines, the data have the same polarity for the liquid crystal cells that are adjacent horizontally and opposite polarities for the liquid crystal cells that are adjacent vertically; and  
 a gate driver that is operative to supply scan signals to the gate lines, the scan signals have different swing widths from each other in accordance with a polarity of the data, and

20 wherein the plurality of switch devices include a plurality of first switch devices that drive a first liquid crystal cell and a plurality of second switch devices that drive a second liquid crystal cell, and the plurality of first switch devices are connected to the  $(n-1)^{\text{th}}$  (where  $n$  is a positive integer of not less than 2) gate line and the plurality of second switch devices are connected to the  $n^{\text{th}}$  gate line.

25 2. The liquid crystal display device according to claim 1, wherein the scan signal includes:

a first scan signal of a first swing width corresponding to the positive data; and  
 a second scan signal of a second swing width corresponding to the negative data,

30 wherein the second swing width is narrower than the first swing width.

3. The liquid crystal display device according to claim 2, wherein the first scan signal has a first swing width between a first gate high voltage of not less than a threshold voltage of the switch device and a gate low voltage of less than the threshold voltage of the switch device; the second scan signal has a second swing width between the gate low voltage and a second gate high voltage; and the second gate high voltage is between a threshold voltage of the switch device and the first gate high voltage.

4. The liquid crystal display device according to claim 3, wherein the gate drive circuit includes:

40 a shift register that is operative to generate a shift pulse and shift the shift pulse by a unit of the gate line; and  
 a level shifter that is operative to adjust a swing width of the shift pulse to the first swing width or the second swing width in accordance with the polarity of the data signal, and supplies to the gate lines.

5. A driving method of a liquid crystal display device, which has a plurality of data lines, a plurality of gate lines which cross the data lines, a plurality of liquid crystal cells formed in pixel areas which are defined by the crossing of the data lines and the gate lines, a plurality of first switch devices disposed between the data lines and the gate lines for driving a first liquid crystal cell, and a plurality of second switch devices for driving a second liquid crystal cell which is horizontally adjacent to the first liquid crystal cell, and where the plurality of first switch devices are connected to the  $(n-1)^{\text{th}}$  ( $n$  is a positive integer of not less than 2) gate line and the plurality of second switch devices are connected to the  $n^{\text{th}}$  gate line, the driving method comprising:

45 generating data that have the same polarity for the liquid crystal cells that are adjacent horizontally and opposite polarities for the liquid crystal cells that are adjacent vertically,  
 supplying the data to the data lines;  
 55 generating a scan signal that has different swing widths from each other in accordance with the polarity of the data; and  
 supplying the scan signals to the gate lines.

**EP 1 863 010 A1**

6. The driving method according to claim 5, wherein generating the scan signal comprises: generating a first scan signal of a first swing width corresponding to the positive data and a second scan signal of a second swing width corresponding to the negative data, wherein the second swing width is narrower than the first swing width.

5 7. The liquid crystal display device according to claim 4, wherein the shift register sequentially shifts the shift pulse by a unit of the gate line.

10

15

20

25

30

35

40

45

50

55

FIG. 1  
RELATED ART

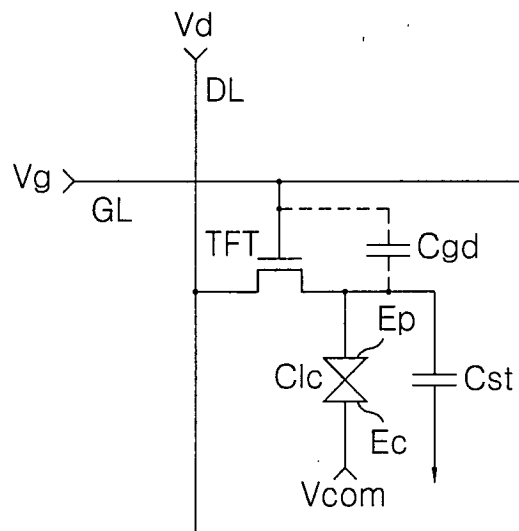
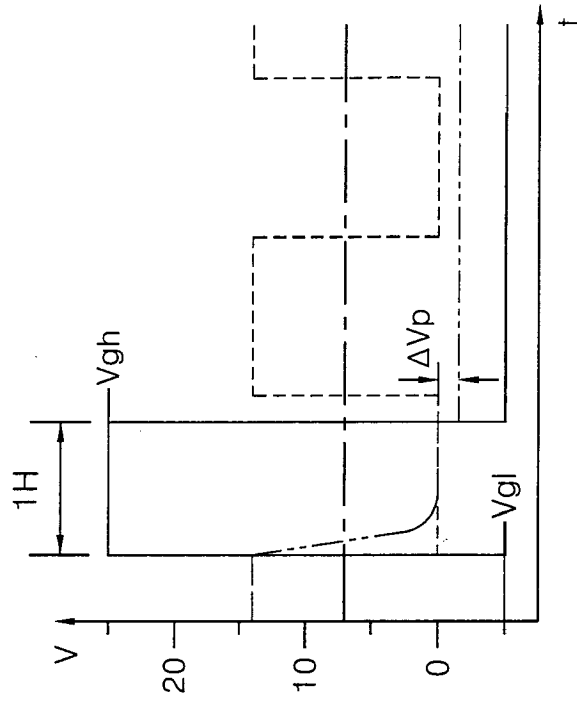
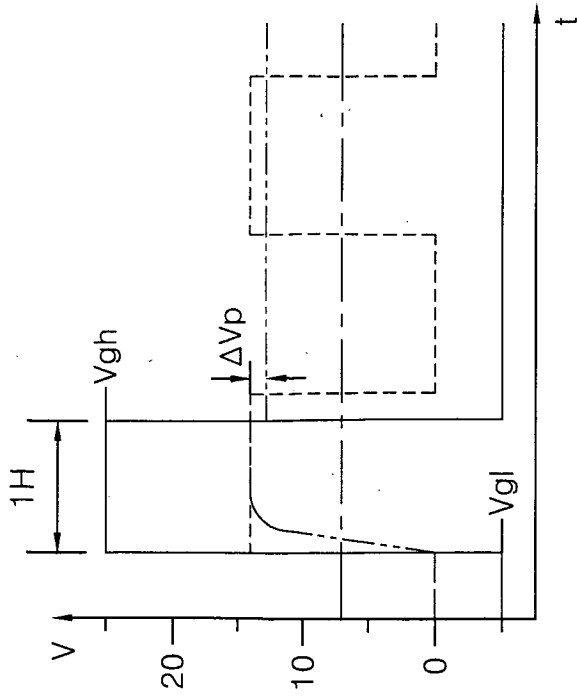


FIG. 2  
RELATED ART



(a) POSITIVE DRIVING(+)

— Vg      - - - - - Vd  
 - - - - - Vcom      - - - - - Vlc



(b) NEGATIVE DRIVING(-)

— Vg      - - - - - Vd  
 - - - - - Vcom      - - - - - Vlc

FIG. 3

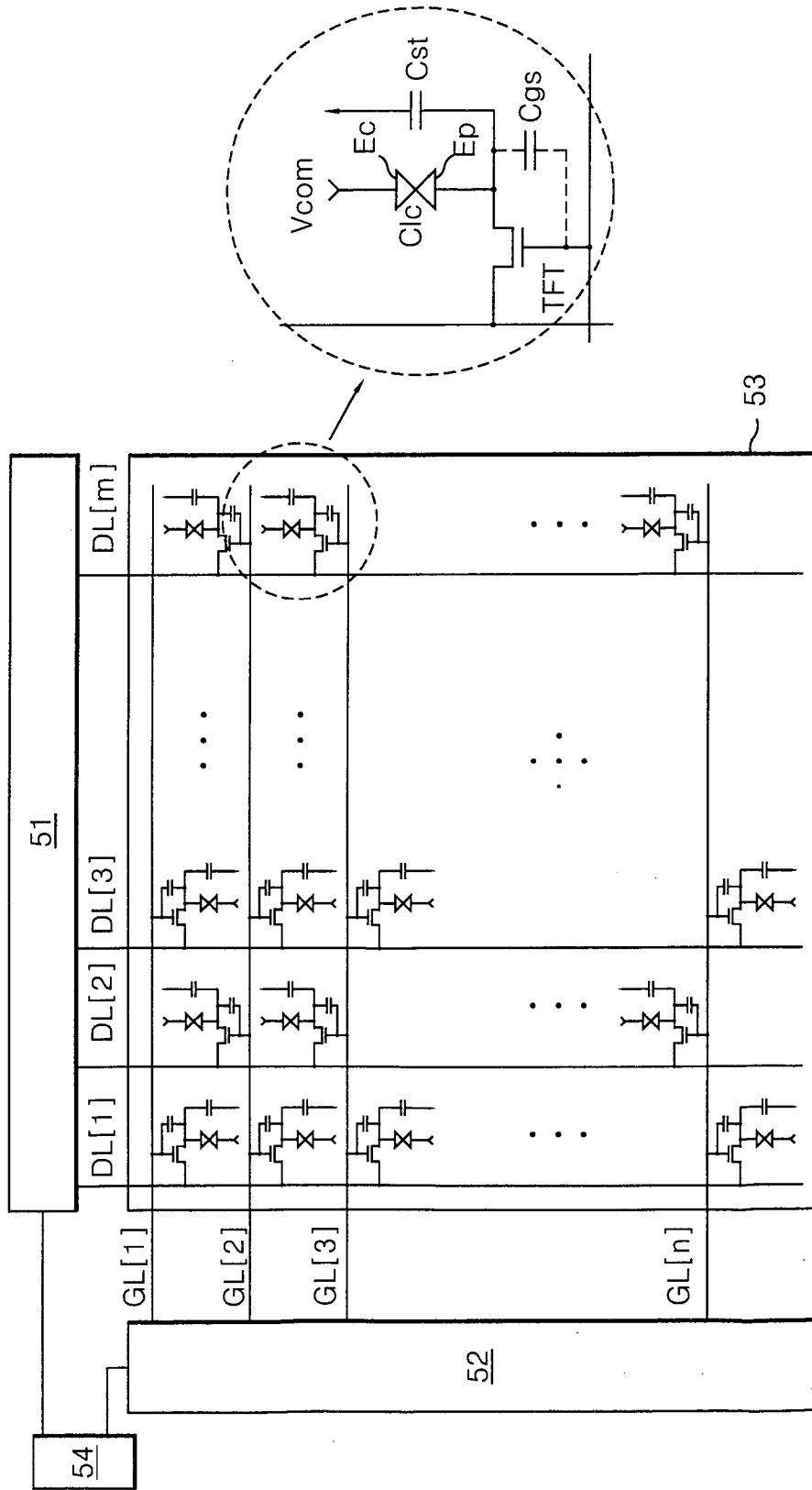


FIG. 4A

+	+	+	+	+	+	+	+	+	+	+	+
-	-	-	-	-	-	-	-	-	-	-	-
+	+	+	+	+	+	+	+	+	+	+	+
-	-	-	-	-	-	-	-	-	-	-	-
+	+	+	+	+	+	+	+	+	+	+	+
-	-	-	-	-	-	-	-	-	-	-	-
+	+	+	+	+	+	+	+	+	+	+	+
-	-	-	-	-	-	-	-	-	-	-	-
+	+	+	+	+	+	+	+	+	+	+	+
-	-	-	-	-	-	-	-	-	-	-	-
+	+	+	+	+	+	+	+	+	+	+	+
-	-	-	-	-	-	-	-	-	-	-	-

FIG. 4B

+	-	+	-	+	-	+	-	+	-	+	-
-	+	-	+	-	+	-	+	-	+	-	+
+	-	+	-	+	-	+	-	+	-	+	-
-	+	-	+	-	+	-	+	-	+	-	+
+	-	+	-	+	-	+	-	+	-	+	-
-	+	-	+	-	+	-	+	-	+	-	+
+	-	+	-	+	-	+	-	+	-	+	-
-	+	-	+	-	+	-	+	-	+	-	+
+	-	+	-	+	-	+	-	+	-	+	-
-	+	-	+	-	+	-	+	-	+	-	+
+	-	+	-	+	-	+	-	+	-	+	-
-	+	-	+	-	+	-	+	-	+	-	+

FIG.5

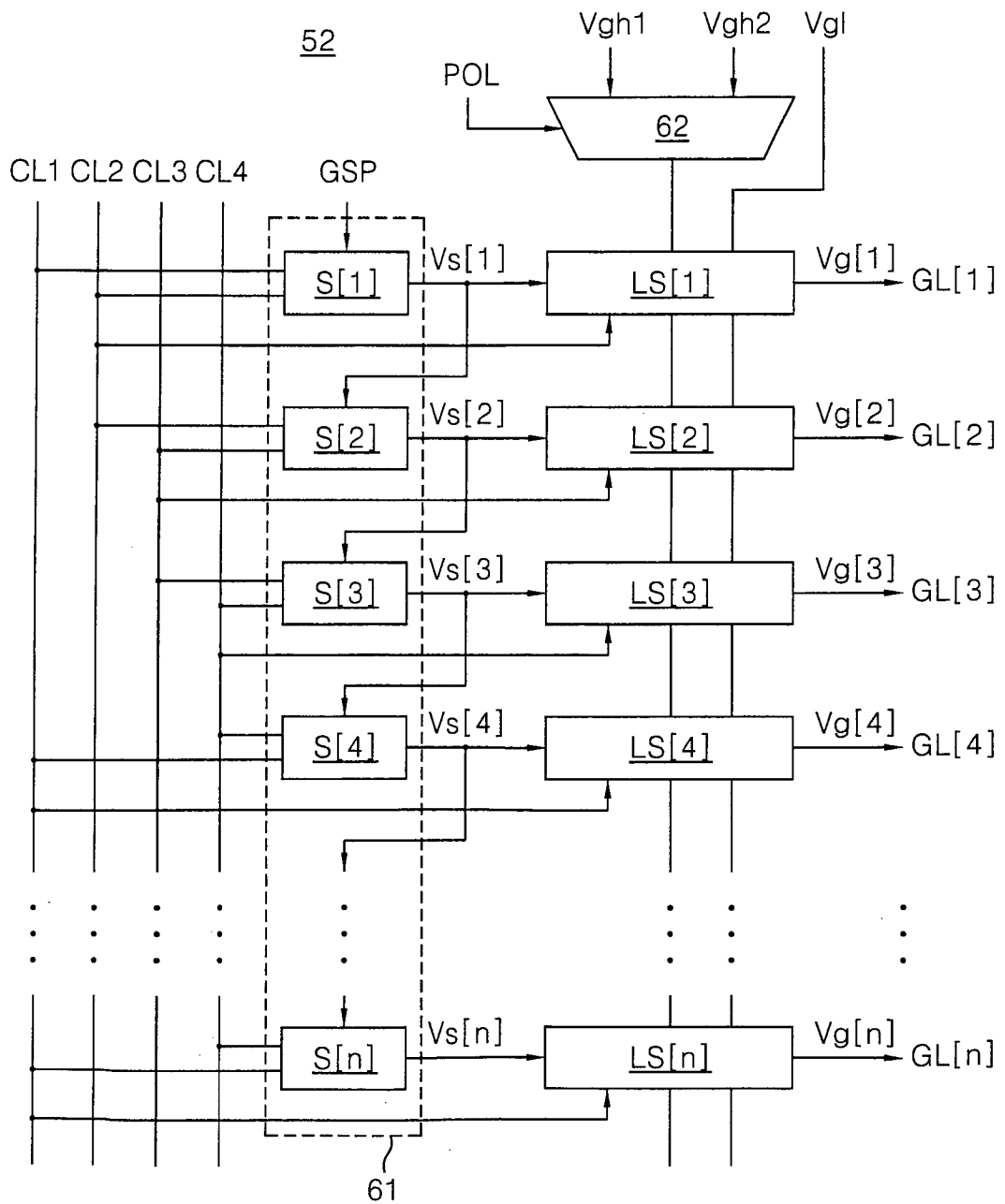


FIG. 6

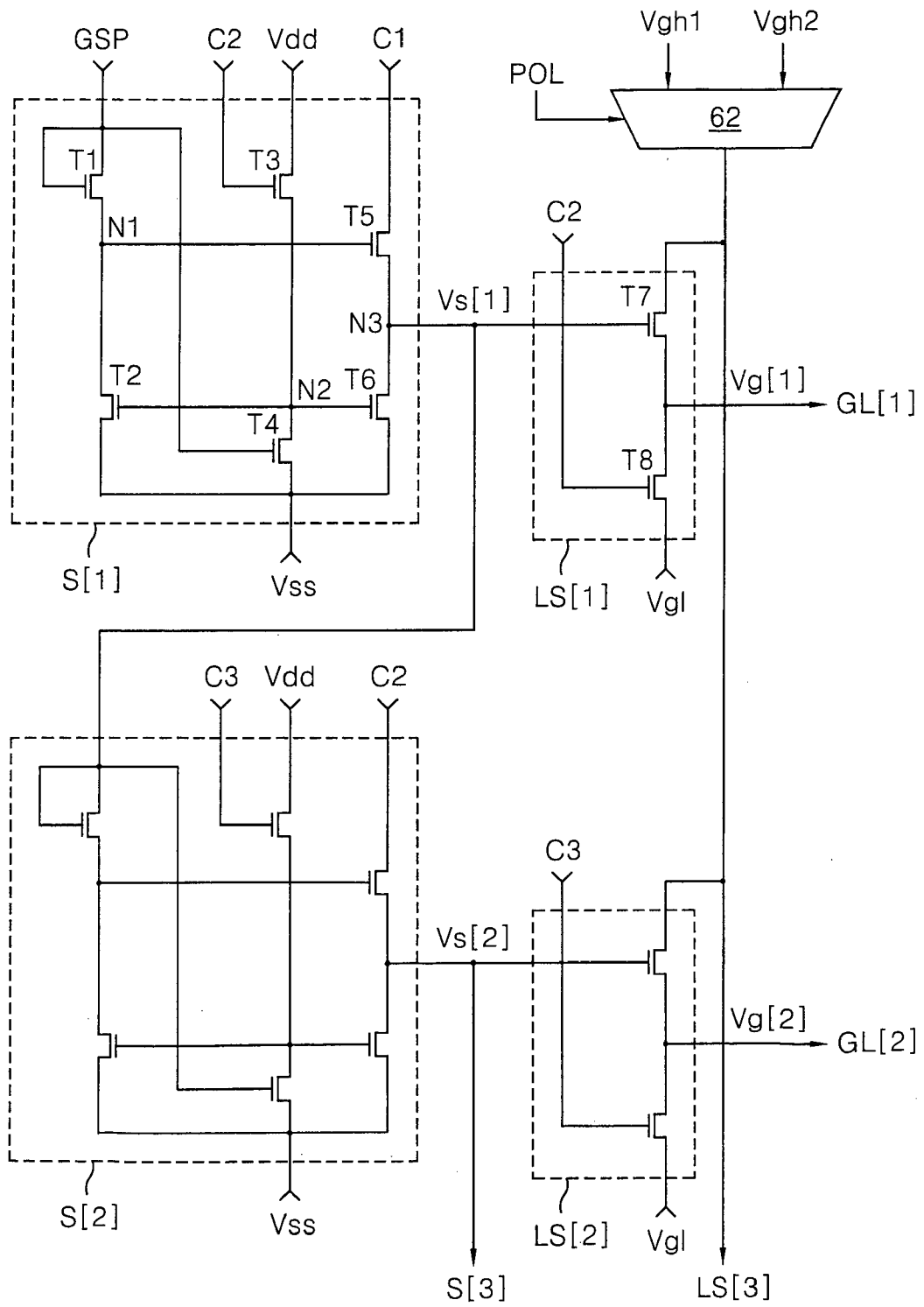


FIG. 7

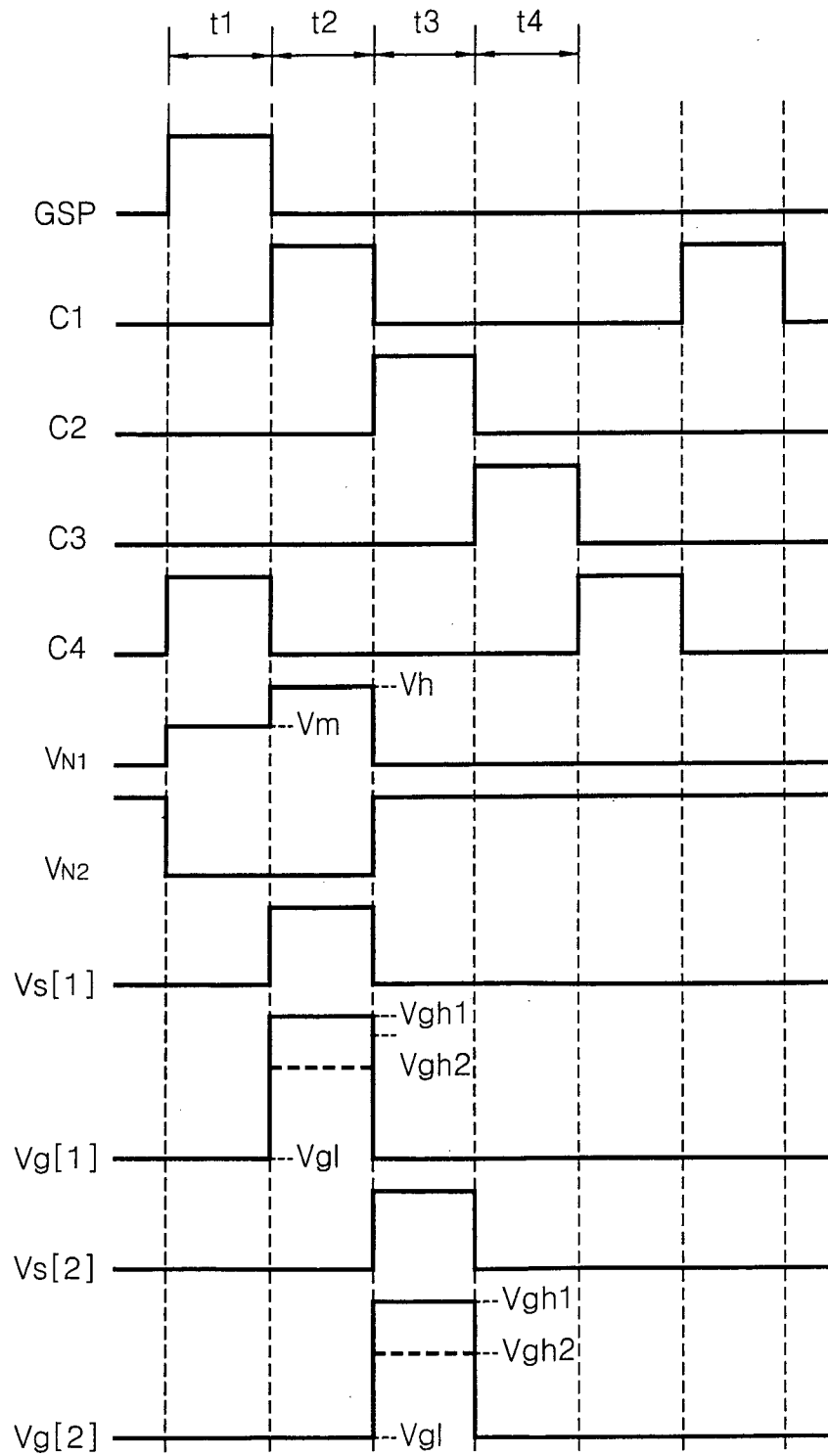


FIG. 8A

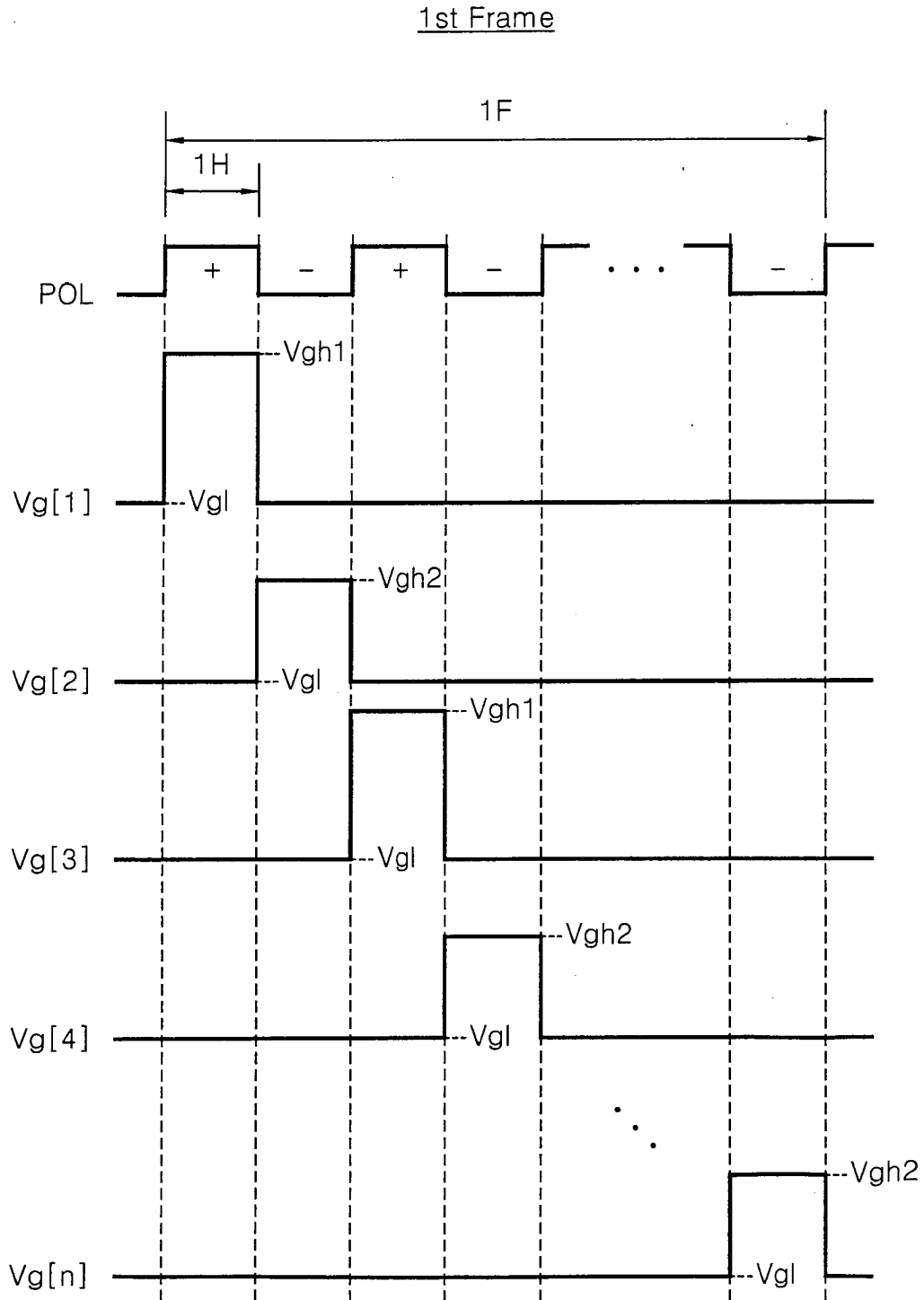
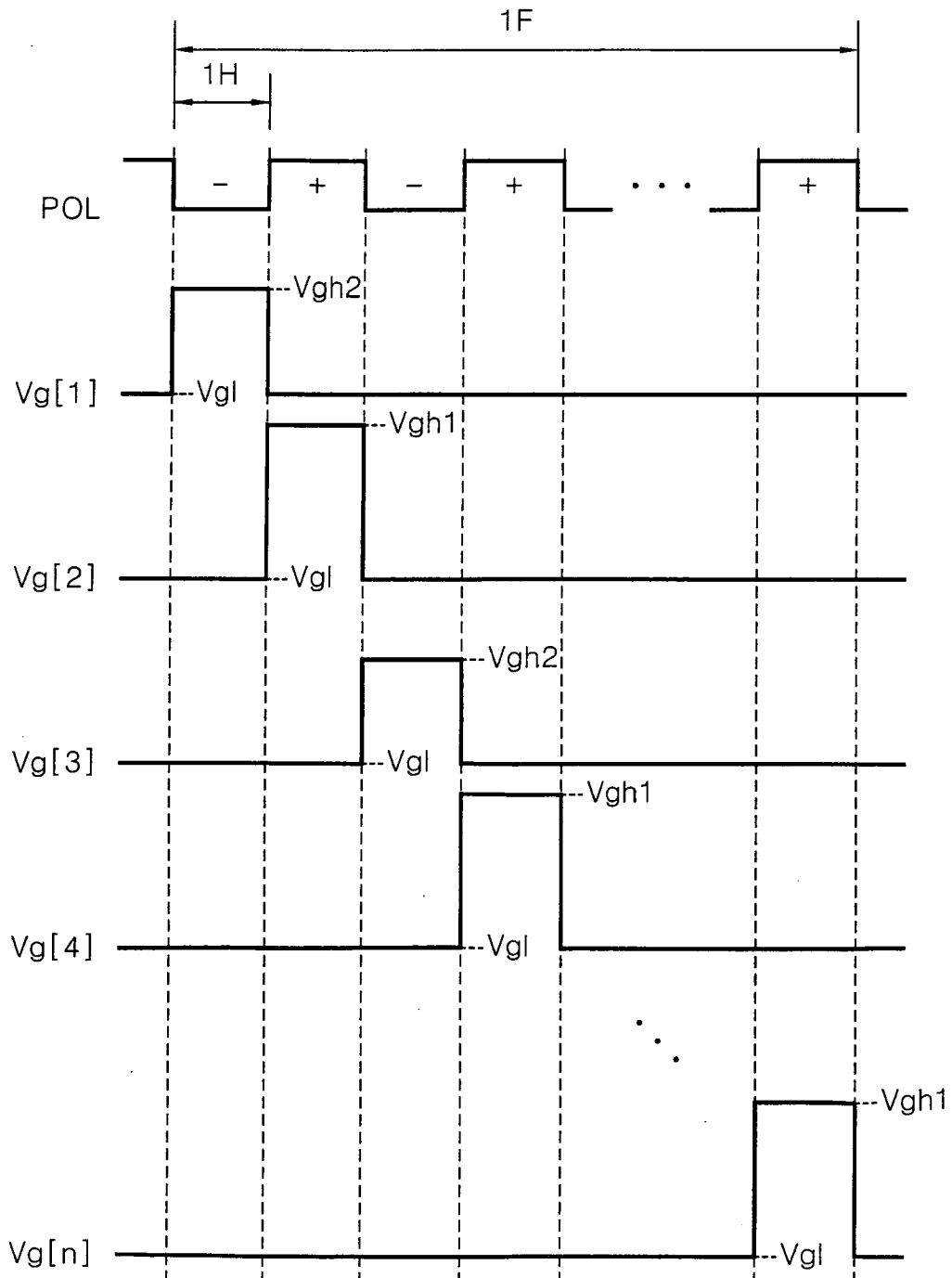


FIG. 8B

2nd Frame





DOCUMENTS CONSIDERED TO BE RELEVANT			
Category	Citation of document with indication, where appropriate, of relevant passages	Relevant to claim	CLASSIFICATION OF THE APPLICATION (IPC)
Y	US 2005/046620 A1 (LEE YONG-HO [TW] ET AL) 3 March 2005 (2005-03-03) * paragraphs [0010], [0011] * * paragraphs [0023], [0027], [0028], [0040] * * figures 5,11 * -----	1-7	INV. G09G3/36
Y	US 2002/008688 A1 (YAMAMOTO TOMOHIKO [JP] ET AL) 24 January 2002 (2002-01-24) * paragraphs [0195] - [0203] * * figures 36-41 * -----	1-7	
			TECHNICAL FIELDS SEARCHED (IPC)
			G09G
The present search report has been drawn up for all claims			
Place of search Munich		Date of completion of the search 4 September 2007	Examiner Adarska, Veneta
<p>CATEGORY OF CITED DOCUMENTS</p> <p>X : particularly relevant if taken alone                      Y : particularly relevant if combined with another document of the same category                      A : technological background                      O : non-written disclosure                      P : intermediate document</p> <p>T : theory or principle underlying the invention                      E : earlier patent document, but published on, or after the filing date                      D : document cited in the application                      L : document cited for other reasons                      .....                      &amp; : member of the same patent family, corresponding document</p>			

1  
EPC FORM 1503 03.02 (P04/C01)

**ANNEX TO THE EUROPEAN SEARCH REPORT  
ON EUROPEAN PATENT APPLICATION NO.**

EP 06 02 3844

This annex lists the patent family members relating to the patent documents cited in the above-mentioned European search report. The members are as contained in the European Patent Office EDP file on The European Patent Office is in no way liable for these particulars which are merely given for the purpose of information.

04-09-2007

Patent document cited in search report	Publication date	Patent family member(s)	Publication date
US 2005046620 A1	03-03-2005	TW 269257 B	21-12-2006
US 2002008688 A1	24-01-2002	KR 20020004809 A	16-01-2002
		KR 20040030753 A	09-04-2004
		TW 573290 B	21-01-2004

EPO FORM P0459

For more details about this annex : see Official Journal of the European Patent Office, No. 12/82

**REFERENCES CITED IN THE DESCRIPTION**

*This list of references cited by the applicant is for the reader's convenience only. It does not form part of the European patent document. Even though great care has been taken in compiling the references, errors or omissions cannot be excluded and the EPO disclaims all liability in this regard.*

**Patent documents cited in the description**

- KR P1020060049819 [0001]

专利名称(译)	液晶显示器及其驱动方法		
公开(公告)号	<a href="#">EP1863010A1</a>	公开(公告)日	2007-12-05
申请号	EP2006023844	申请日	2006-11-16
[标]申请(专利权)人(译)	乐金显示有限公司		
申请(专利权)人(译)	LG.飞利浦液晶CO.LTD.		
当前申请(专利权)人(译)	LG DISPLAY CO. , LTD.		
[标]发明人	PARK JONG JIN LEE SANG YEUP JEONG SEONG HUN		
发明人	PARK, JONG JIN LEE, SANG YEUP JEONG, SEONG HUN		
IPC分类号	G09G3/36		
CPC分类号	G09G3/3614 G09G3/3648 G09G3/3677 G09G3/3688 G09G3/3696 G09G2300/0439 G09G2320/0209 G09G2320/0219 G09G2320/0247		
优先权	1020060049819 2006-06-02 KR		
外部链接	<a href="#">Espacenet</a>		

摘要(译)

提供一种液晶显示装置及其驱动方法。液晶显示器包括数据驱动器，其用于向数据线提供数据。栅极驱动器用于向栅极线提供扫描信号。扫描信号根据数据的极性具有彼此不同的摆动宽度。开关装置包括多个第一开关装置和多个第二开关装置。第一开关器件连接到第 (n-1) (其中n是不小于2的正整数) 栅极线，第二开关器件连接到第n栅极线。

FIG.3

