



(12) **EUROPEAN PATENT APPLICATION**

(88) Date of publication A3:
17.05.2006 Bulletin 2006/20

(51) Int Cl.:
G02F 1/1362^(2006.01) G02F 1/1343^(2006.01)
G02F 1/139^(2006.01)

(43) Date of publication A2:
01.02.2006 Bulletin 2006/05

(21) Application number: **05254679.3**

(22) Date of filing: **27.07.2005**

(84) Designated Contracting States:
**AT BE BG CH CY CZ DE DK EE ES FI FR GB GR
HU IE IS IT LI LT LU LV MC NL PL PT RO SE SI
SK TR**
Designated Extension States:
AL BA HR MK YU

- **Lee, Chang-Hun**
Giheung-eup
Yongin-si
Gyeonggi-do (KR)
- **Park, Cheol-Woo**
Yeongtong-gu
Suwon-si
Gyeonggi-do (KR)
- **Chai, Chong-Chul**
Mapo-gu
Seoul (KR)

(30) Priority: **27.07.2004 KR 2004058709**

(71) Applicant: **SAMSUNG ELECTRONICS CO., LTD.**
Suwon-si,
Gyeonggi-do (KR)

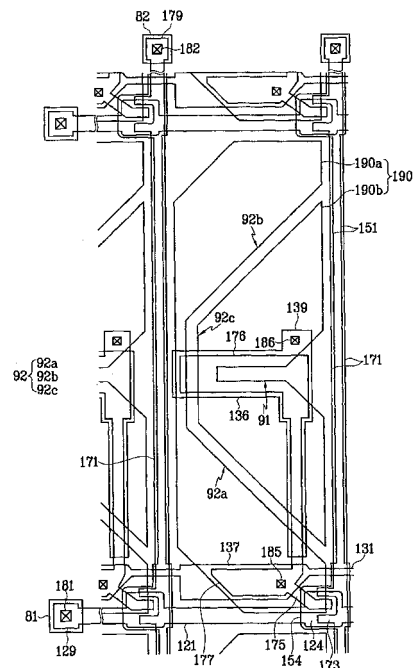
(74) Representative: **Greene, Simon Kenneth**
Elkington and Fife LLP,
Prospect House,
8 Pembroke Road
Sevenoaks,
Kent TN13 1XR (GB)

(72) Inventors:
• **Shin, Kyoung-Ju**
Giheung-eup
Yongin-si
Gyeonggi-do (KR)

(54) **Liquid crystal display and panel therefor**

(57) The invention provides a liquid crystal display including a thin film transistor array panel according to an embodiment of the present invention includes: a substrate; a gate line formed on the substrate; a data line crossing the gate line; a thin film transistor connected to the gate and data lines; and a pixel electrode including first and second subpixel portions electrically connected to the thin film transistor, and a third subpixel portion capacitively coupled to at least one of the first and the second subpixel portions. Such an arrangement of a TFT permits a distribution of the tilt directions of liquid crystal molecules in the same pixel to improve lateral viewing of the liquid crystal display.

FIG.1





DOCUMENTS CONSIDERED TO BE RELEVANT			
Category	Citation of document with indication, where appropriate, of relevant passages	Relevant to claim	CLASSIFICATION OF THE APPLICATION (IPC)
X	US 5 321 535 A (UKAI ET AL) 14 June 1994 (1994-06-14)	1,19-22	G02F1/1362 G02F1/1343
Y	* column 8, line 30 - column 10, line 31 *	2-7,13, 15,17, 18,23	G02F1/139
A	* column 12, line 3 - line 11; figures 10-12,14A *	3-5,10, 13,24,25	

X	EP 0 685 757 A (MATSUSHITA ELECTRIC INDUSTRIAL CO., LTD) 6 December 1995 (1995-12-06) * column 1 * * column 10, line 45 - line 54; figure 5 *	1,15,19	

Y	US 2004/135147 A1 (KIM HEE-SEOB ET AL) 15 July 2004 (2004-07-15) * paragraph [0044] - paragraph [0092]; figures 1-4 *	2-5,13, 15-18,23	

Y	US 2004/125248 A1 (SONG IN DUK) 1 July 2004 (2004-07-01)	6,7,16	TECHNICAL FIELDS SEARCHED (IPC)
A	* the whole document *	4,11,15	

Y	US 2003/206262 A1 (KIM KYEONG-HYEON ET AL) 6 November 2003 (2003-11-06) * paragraph [0002] * * paragraph [0048] - paragraph [0053]; claim 1; figure 9 *	2,17,18	G02F

The present search report has been drawn up for all claims			
Place of search		Date of completion of the search	Examiner
The Hague		21 March 2006	Stang, I
CATEGORY OF CITED DOCUMENTS		T : theory or principle underlying the invention E : earlier patent document, but published on, or after the filing date D : document cited in the application L : document cited for other reasons & : member of the same patent family, corresponding document	
X : particularly relevant if taken alone Y : particularly relevant if combined with another document of the same category A : technological background O : non-written disclosure P : intermediate document			

4
EPO FORM 1503 03.02 (P04C01)

ANNEX TO THE EUROPEAN SEARCH REPORT
ON EUROPEAN PATENT APPLICATION NO.

EP 05 25 4679

This annex lists the patent family members relating to the patent documents cited in the above-mentioned European search report. The members are as contained in the European Patent Office EDP file on
The European Patent Office is in no way liable for these particulars which are merely given for the purpose of information.

21-03-2006

Patent document cited in search report		Publication date	Patent family member(s)	Publication date
US 5321535	A	14-06-1994	NONE	

EP 0685757	A	06-12-1995	JP 7325323 A	12-12-1995
			TW 401525 B	11-08-2000
			US 5680190 A	21-10-1997

US 2004135147	A1	15-07-2004	JP 2004213011 A	29-07-2004
			US 2006001604 A1	05-01-2006

US 2004125248	A1	01-07-2004	US 2006050190 A1	09-03-2006

US 2003206262	A1	06-11-2003	NONE	

专利名称(译)	液晶显示器及其面板		
公开(公告)号	EP1621924A3	公开(公告)日	2006-05-17
申请号	EP2005254679	申请日	2005-07-27
[标]申请(专利权)人(译)	三星电子株式会社		
申请(专利权)人(译)	SAMSUNG ELECTRONICS CO. , LTD.		
当前申请(专利权)人(译)	三星DISPLAY CO. , LTD.		
[标]发明人	SHIN KYOUNG JU LEE CHANG HUN PARK CHEOL WOO CHAI CHONG CHUL		
发明人	SHIN, KYOUNG-JU LEE, CHANG-HUN PARK, CHEOL-WOO CHAI, CHONG-CHUL		
IPC分类号	G02F1/1362 G02F1/1343 G02F1/139		
CPC分类号	G02F1/136213 G02F1/133707 G02F1/134336 G02F1/1393 G02F2001/134345		
优先权	1020040058709 2004-07-27 KR		
其他公开文献	EP1621924B1 EP1621924A2		
外部链接	Espacenet		

摘要(译)

本发明提供一种包括根据本发明实施例的薄膜晶体管阵列面板的液晶显示器，包括：基板；形成在所述基板上的栅极线；与所述栅极线交叉的数据线；连接到所述栅极线和数据线的薄膜晶体管；以及像素电极，包括电连接到所述薄膜晶体管的第一子像素部分和第二子像素部分，以及电容耦合到所述第一子像素部分和所述第二子像素部分中的至少一个的第三子像素部分。 TFT的这种布置允许在同一像素中液晶分子的倾斜方向的分布，以改善液晶显示器的侧面观察。

FIG. 1

