



(12) **EUROPEAN PATENT APPLICATION**

(88) Date of publication A3:  
**07.11.2007 Bulletin 2007/45**

(51) Int Cl.:  
**G09G 3/34<sup>(2006.01)</sup>**

(43) Date of publication A2:  
**17.07.2002 Bulletin 2002/29**

(21) Application number: **01309446.1**

(22) Date of filing: **07.11.2001**

(84) Designated Contracting States:  
**AT BE CH CY DE DK ES FI FR GB GR IE IT LI LU MC NL PT SE TR**  
Designated Extension States:  
**AL LT LV MK RO SI**

(30) Priority: **29.12.2000 KR 2000085540**  
**14.05.2001 KR 2001026136**

(71) Applicant: **SAMSUNG ELECTRONICS CO. LTD.**  
**Suwon-city,**  
**Kyungki-do (KR)**

(72) Inventors:  
• **Moon, Seung-Hwan**  
**Seocho-ku,**  
**Seoul (KR)**

- **Kim, Sang-Soo**  
**Songpa-ku,**  
**Seoul (KR)**
- **Park, Dong-Won**  
**Seodaemun-ku,**  
**Seoul (KR)**
- **Choi, Hyeong-Bae**  
**Kwanak-ku,**  
**Seoul (KR)**

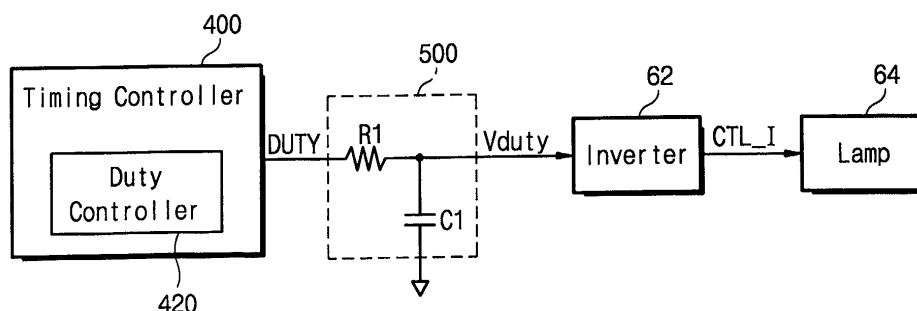
(74) Representative: **Mouteney, Simon James**  
**Marks & Clerk**  
**90 Long Acre**  
**London WC2E 9RA (GB)**

(54) **Apparatus and method for automatic brightness control of the backlight for use in a liquid crystal display device**

(57) An LCD device having a backlight generates a backlight brightness control signal in response to a duty rate signal corresponding to an average gray level or/and a color state of image data to be displayed on the LCD

device and a brightness control voltage generated from the main body of the computer by user, and controls a brightness of the backlight automatically according to the backlight brightness control signal.

**Fig. 3**





European Patent  
Office

# EUROPEAN SEARCH REPORT

Application Number  
EP 01 30 9446

DOCUMENTS CONSIDERED TO BE RELEVANT			
Category	Citation of document with indication, where appropriate, of relevant passages	Relevant to claim	CLASSIFICATION OF THE APPLICATION (IPC)
X	US 5 717 422 A (FERGASON JAMES L) 10 February 1998 (1998-02-10)	1,2	INV. G09G3/34
Y	* abstract * * column 1, line 31 - line 38 * * column 1, line 65 - line 67 * * column 2, line 18 - line 28 * * column 3, line 1 - column 5, line 19; figures 1-3 * * column 12, line 24 - line 65; figures 6-11 *	3,4,18	
X	----- EP 0 730 371 A (SONY CORP) 4 September 1996 (1996-09-04) * abstract * * column 1, line 1 - line 21; figure 1 * * column 1, line 54 - column 2, line 18 * * column 3, line 51 - column 4, line 48; figure 2 * * column 5, line 11 - line 41; figure 3 * * column 6, line 22 - line 33 * * column 7, line 29 - line 38 *	1,2	TECHNICAL FIELDS SEARCHED (IPC)
A	----- WO 99/63515 A (SILICON GRAPHICS INC) 9 December 1999 (1999-12-09) * abstract * * page 1, line 7 - line 23 * * page 2, line 10 - line 21 * * page 3, line 10 - line 18 * * page 6, line 1 - page 7, line 2 * * page 15, line 14 - page 17, line 2; figures 1A,1B * * page 20, line 4 - page 21, line 9; figure 2A * * page 22, line 7 - line 10 * * page 26, line 2 - line 14; figure 4 * ----- -/--	1,13	G09G
The present search report has been drawn up for all claims			
Place of search <b>Munich</b>		Date of completion of the search <b>1 October 2007</b>	Examiner <b>Corsi, Fabio</b>
CATEGORY OF CITED DOCUMENTS X : particularly relevant if taken alone Y : particularly relevant if combined with another document of the same category A : technological background O : non-written disclosure P : intermediate document		T : theory or principle underlying the invention E : earlier patent document, but published on, or after the filing date D : document cited in the application L : document cited for other reasons ----- & : member of the same patent family, corresponding document	

7

EPO FORM 1503 03.82 (P04C01)



European Patent  
Office

# EUROPEAN SEARCH REPORT

Application Number  
EP 01 30 9446

DOCUMENTS CONSIDERED TO BE RELEVANT				
Category	Citation of document with indication, where appropriate, of relevant passages	Relevant to claim	CLASSIFICATION OF THE APPLICATION (IPC)	
Y	EP 0 883 103 A (THOMSON MULTIMEDIA SA) 9 December 1998 (1998-12-09) * abstract * * column 1, line 10 - line 42 * * column 2, line 37 - line 43; figure 2 * * column 3, line 1 - line 5; figure 3 *	3,4,18		
A	US 5 057 744 A (BARBIER BRUNO ET AL) 15 October 1991 (1991-10-15) * abstract * * column 1, line 19 - line 34 * * column 1, line 67 - column 2, line 18 * * column 2, line 37 - column 3, line 15; figure 1 * * column 3, line 61 - column 4, line 35; figure 3 * * column 5, line 22 - line 31; figure 6 * * column 6, line 6 - line 16 *	5		
A	PATENT ABSTRACTS OF JAPAN vol. 004, no. 131 (P-027), 13 September 1980 (1980-09-13) & JP 55 082375 A (SONY TEKTRONIX CORP), 21 June 1980 (1980-06-21) * abstract *	5-7		TECHNICAL FIELDS SEARCHED (IPC)
A	SCHMIDT T: "GENERATE AN ANALOG SIGNAL WITH A MUC" EDN ELECTRICAL DESIGN NEWS, CAHNERS PUBLISHING CO. NEWTON, MASSACHUSETTS, US, vol. 43, no. 22, 22 October 1998 (1998-10-22), page 108, XP000869005 ISSN: 0012-7515 * the whole document *	5,6		
The present search report has been drawn up for all claims				
Place of search Munich		Date of completion of the search 1 October 2007	Examiner Corsi, Fabio	
<p>CATEGORY OF CITED DOCUMENTS</p> <p>X : particularly relevant if taken alone Y : particularly relevant if combined with another document of the same category A : technological background O : non-written disclosure P : intermediate document</p> <p>T : theory or principle underlying the invention E : earlier patent document, but published on, or after the filing date D : document cited in the application L : document cited for other reasons &amp; : member of the same patent family, corresponding document</p>				

7

EPO FORM 1503 03.92 (P04C01)



DOCUMENTS CONSIDERED TO BE RELEVANT			
Category	Citation of document with indication, where appropriate, of relevant passages	Relevant to claim	CLASSIFICATION OF THE APPLICATION (IPC)
A	PATENT ABSTRACTS OF JAPAN vol. 1995, no. 05, 30 June 1995 (1995-06-30) & JP 07 038909 A (MATSUSHITA ELECTRIC IND CO LTD), 7 February 1995 (1995-02-07) * abstract *	13	TECHNICAL FIELDS SEARCHED (IPC)
P,X	US 2001/033260 A1 (NISHITANI SHIGEYUKI [JP] ET AL) 25 October 2001 (2001-10-25) * abstract * * paragraphs [0063] - [0069]; figures 2,3 * * paragraphs [0100] - [0112]; figures 15-20,24 *	1,2,20	
X	WO 00/68926 A (MATSUSHITA ELECTRIC IND CO LTD [JP]; FUNAMOTO TARO [JP]; MACHIDORI WAT) 16 November 2000 (2000-11-16) * abstract *	1-4,13,19,24	
Y		14,16,17,23	
P,X	& EP 1 111 578 A (MATSUSHITA ELECTRIC IND CO LTD [JP]) 27 June 2001 (2001-06-27) * abstract *	1-4,13,19,24	
P,Y		14,16,17,23	
	* paragraphs [0001] - [0010] * * paragraph [0017] * * paragraphs [0060] - [0082]; figures 1-4 * * paragraphs [0106] - [0114]; figure 10 *		
X	US 4 752 771 A (KATO GI KOUZOU [JP] ET AL) 21 June 1988 (1988-06-21) * abstract *	19,22	
Y		16,20	
Y	* column 1, line 5 - column 2, line 26 * * column 3, line 10 - column 4, line 36; figures 1-6 *	16,20	
----- -/--			
The present search report has been drawn up for all claims			
Place of search Munich		Date of completion of the search 1 October 2007	Examiner Corsi, Fabio
CATEGORY OF CITED DOCUMENTS X : particularly relevant if taken alone Y : particularly relevant if combined with another document of the same category A : technological background O : non-written disclosure P : intermediate document T : theory or principle underlying the invention E : earlier patent document, but published on, or after the filing date D : document cited in the application L : document cited for other reasons & : member of the same patent family, corresponding document			

7

EPO FORM 1503 03.82 (P04C01)



European Patent  
Office

# EUROPEAN SEARCH REPORT

Application Number  
EP 01 30 9446

DOCUMENTS CONSIDERED TO BE RELEVANT			
Category	Citation of document with indication, where appropriate, of relevant passages	Relevant to claim	CLASSIFICATION OF THE APPLICATION (IPC)
Y	JP 11 296127 A (HITACHI LTD) 29 October 1999 (1999-10-29) * abstract *	14,17, 20,23	
P,Y	& US 6 300 931 B1 (SOMEYA RYUUICHI [JP] ET AL) 9 October 2001 (2001-10-09) * abstract * * sentence 17 - sentence 27; figure 2 * -----	14,17, 20,23	
			TECHNICAL FIELDS SEARCHED (IPC)
The present search report has been drawn up for all claims			
Place of search <b>Munich</b>		Date of completion of the search <b>1 October 2007</b>	Examiner <b>Corsi, Fabio</b>
<p>CATEGORY OF CITED DOCUMENTS</p> <p>X : particularly relevant if taken alone Y : particularly relevant if combined with another document of the same category A : technological background O : non-written disclosure P : intermediate document</p> <p>T : theory or principle underlying the invention E : earlier patent document, but published on, or after the filing date D : document cited in the application L : document cited for other reasons ..... &amp; : member of the same patent family, corresponding document</p>			

7

EPO FORM 1503 03.92 (P04C01)

**CLAIMS INCURRING FEES**

The present European patent application comprised at the time of filing more than ten claims.

- ☐ Only part of the claims have been paid within the prescribed time limit. The present European search report has been drawn up for the first ten claims and for those claims for which claims fees have been paid, namely claim(s):
- ☐ No claims fees have been paid within the prescribed time limit. The present European search report has been drawn up for the first ten claims.

**LACK OF UNITY OF INVENTION**

The Search Division considers that the present European patent application does not comply with the requirements of unity of invention and relates to several inventions or groups of inventions, namely:

see sheet B

- ☒ All further search fees have been paid within the fixed time limit. The present European search report has been drawn up for all claims.
- ☐ As all searchable claims could be searched without effort justifying an additional fee, the Search Division did not invite payment of any additional fee.
- ☐ Only part of the further search fees have been paid within the fixed time limit. The present European search report has been drawn up for those parts of the European patent application which relate to the inventions in respect of which search fees have been paid, namely claims:
- ☐ None of the further search fees have been paid within the fixed time limit. The present European search report has been drawn up for those parts of the European patent application which relate to the invention first mentioned in the claims, namely claims:



European Patent  
Office

**LACK OF UNITY OF INVENTION  
SHEET B**

Application Number  
EP 01 30 9446

The Search Division considers that the present European patent application does not comply with the requirements of unity of invention and relates to several inventions or groups of inventions, namely:

1. claims: 1-18

LCD device with automatic control of backlight brightness  
based on average image grey level and on user operation  
---

2. claims: 19-26

LCD device with automatic control of backlight brightness  
based on image pixel colour  
---

**ANNEX TO THE EUROPEAN SEARCH REPORT  
ON EUROPEAN PATENT APPLICATION NO.**

EP 01 30 9446

This annex lists the patent family members relating to the patent documents cited in the above-mentioned European search report.  
The members are as contained in the European Patent Office EDP file on  
The European Patent Office is in no way liable for these particulars which are merely given for the purpose of information.

01-10-2007

Patent document cited in search report		Publication date	Patent family member(s)	Publication date
US 5717422	A	10-02-1998	NONE	
EP 0730371	A	04-09-1996	IN 192868 A1	22-05-2004
			JP 3764504 B2	12-04-2006
			JP 8237579 A	13-09-1996
			US 6111559 A	29-08-2000
WO 9963515	A	09-12-1999	US 2002163529 A1	07-11-2002
			US 6366270 B1	02-04-2002
EP 0883103	A	09-12-1998	JP 11065537 A	09-03-1999
US 5057744	A	15-10-1991	DE 3869449 D1	30-04-1992
			EP 0285521 A1	05-10-1988
			FR 2613572 A1	07-10-1988
JP 55082375	A	21-06-1980	JP 1242437 C	26-11-1984
			JP 59020151 B	11-05-1984
JP 07038909	A	07-02-1995	NONE	
US 2001033260	A1	25-10-2001	TW 518882 B	21-01-2003
WO 0068926	A	16-11-2000	CA 2336803 A1	16-11-2000
			CN 1304522 A	18-07-2001
			CN 1560829 A	05-01-2005
			CN 1591547 A	09-03-2005
			EP 1111578 A1	27-06-2001
			TW 249630 B	21-02-2006
			US 6795053 B1	21-09-2004
EP 1111578	A	27-06-2001	CA 2336803 A1	16-11-2000
			CN 1304522 A	18-07-2001
			CN 1560829 A	05-01-2005
			CN 1591547 A	09-03-2005
			WO 0068926 A1	16-11-2000
			TW 249630 B	21-02-2006
			US 6795053 B1	21-09-2004
US 4752771	A	21-06-1988	DE 3583195 D1	18-07-1991
			EP 0174497 A2	19-03-1986
			JP 1756232 C	23-04-1993
			JP 4041762 B	09-07-1992
			JP 61057814 A	24-03-1986
JP 11296127	A	29-10-1999	TW 451177 B	21-08-2001

EPO FORM P0459

For more details about this annex : see Official Journal of the European Patent Office, No. 12/82



**ANNEX TO THE EUROPEAN SEARCH REPORT  
ON EUROPEAN PATENT APPLICATION NO.**

EP 01 30 9446

This annex lists the patent family members relating to the patent documents cited in the above-mentioned European search report.  
The members are as contained in the European Patent Office EDP file on  
The European Patent Office is in no way liable for these particulars which are merely given for the purpose of information.

01-10-2007

Patent document cited in search report	Publication date	Patent family member(s)	Publication date
JP 11296127 A		US 6300931 B1	09-10-2001
-----			
US 6300931 B1	09-10-2001	JP 11296127 A	29-10-1999
		TW 451177 B	21-08-2001
-----			

专利名称(译)	用于液晶显示装置的背光的自动亮度控制的装置和方法		
公开(公告)号	<a href="#">EP1223570A3</a>	公开(公告)日	2007-11-07
申请号	EP2001309446	申请日	2001-11-07
[标]申请(专利权)人(译)	三星电子株式会社		
申请(专利权)人(译)	SAMSUNG ELECTRONICS CO. LTD.		
当前申请(专利权)人(译)	三星DISPLAY CO. , LTD.		
[标]发明人	MOON SEUNG HWAN KIM SANG SOO PARK DONG WON CHOI HYEONG BAE		
发明人	MOON, SEUNG-HWAN KIM, SANG-SOO PARK, DONG-WON CHOI, HYEONG-BAE		
IPC分类号	G09G3/34 G02F1/133 G09G3/20 G09G3/36 H04N5/66 H05B41/40 H05B41/42		
CPC分类号	G09G3/3406 G09G3/2011 G09G3/3413 G09G2320/0238 G09G2320/0276 G09G2320/0606 G09G2320/0613 G09G2320/064 G09G2320/0653 G09G2330/021 G09G2360/16		
优先权	1020000085540 2000-12-29 KR 1020010026136 2001-05-14 KR		
其他公开文献	EP1223570A2 EP1223570B1		
外部链接	<a href="#">Espacenet</a>		

#### 摘要(译)

具有背光的LCD装置响应于与要在LCD装置上显示的图像数据的平均灰度级和/或颜色状态相对应的占空比信号以及从主装置产生的亮度控制电压而产生背光亮度控制信号。用户的身体，根据背光亮度控制信号自动控制背光的亮度。

Fig. 3

